

Statistical aspects of the energy economy in 2008

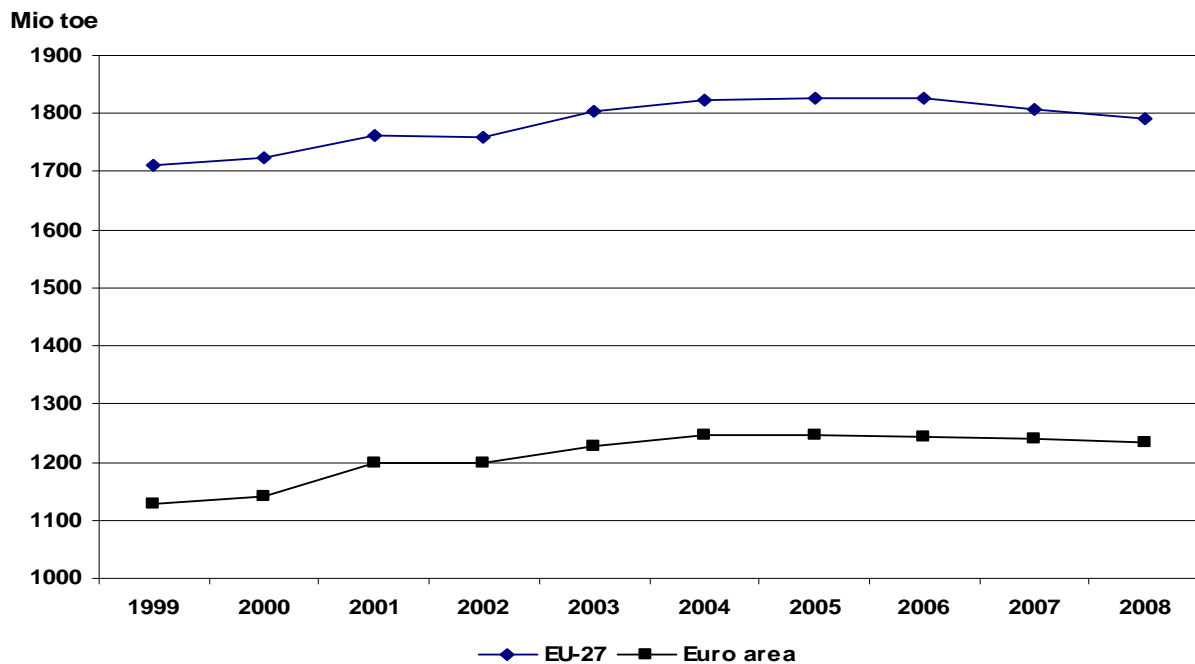
This publication provides a first overview of the energy economy in 2008 based on monthly cumulated data for each EU Member State. Production and consumption trends are outlined for the principal energy commodities – oil, natural gas, solid fuels, nuclear and primary

electrical energy. Main indicators such as energy dependence rate and energy intensity are presented. In addition, heating degree days calculated on the basis of a common Eurostat methodology are also included.

Main findings

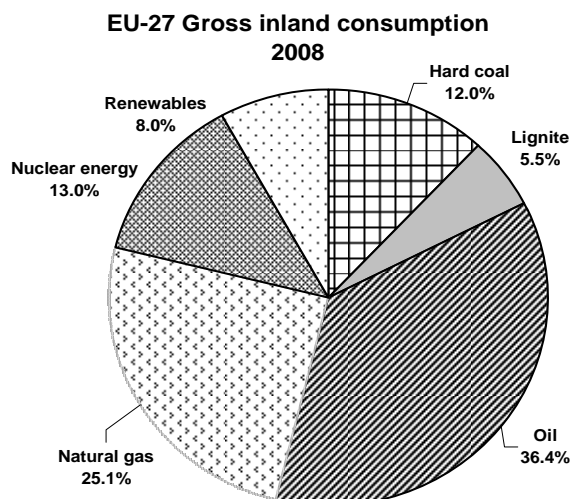
- EU-27 gross inland consumption dropped in 2008 to a level below that of 2003
- EU-27 production of primary energy declined for the second consecutive year
- Energy intensity continued to drop in 2008, confirming the trend of recent years
- Energy dependency rose in 2008; Denmark was the only net energy exporting country
- Russia continued to be the main energy supplier of oil, natural gas and coal
- Hydro and wind energy production increased significantly by 9%
- Poland became a net importer of coal in 2008

Gross inland consumption



Source: Eurostat ([nrg_100a](#))

Energy consumption trends



Source: Eurostat ([nrg_100a](#))

When compared to 2007, EU-27 gross inland consumption dropped in 2008.

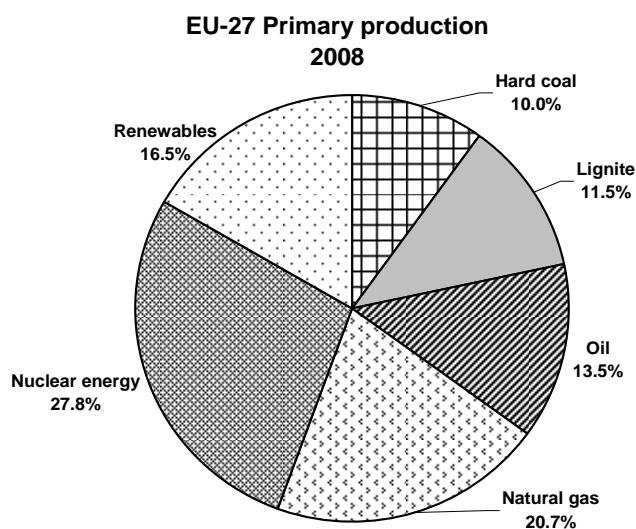
While gross inland consumption (GIC) remained practically stable in Ireland, eight Member States increased GIC with values ranging from 0.4% in France to 7.5% in Slovenia.

All other Member States reduced GIC with values ranging from -6.0% in Denmark to -1.0% in Sweden.

Production trends

EU-27 energy production observed a general downward trend over the past decade. In 2008 nuclear energy continued to hold the largest share

of total primary energy production and together with natural gas accounted for nearly half of EU total energy production.



Source: Eurostat ([nrg_100a](#))

Summary energy balance
January - December

Million tonnes of oil equivalent

		Primary Production ⁽¹⁾	Total Imports ⁽²⁾	Total Exports ⁽²⁾	Change in Stocks ⁽³⁾	Gross Consumption	Bunkers	Gross Inland Consumption
EU-27	2007	834.2	1431.7	457.9	12.1	1822.2	53.9	1768.3
	2008	823.4	1452.0	463.0	-8.6	1806.0	53.0	1753.0
Euro area	2007	441.5	1122.3	296.9	9.9	1279.2	48.2	1231.1
	2008	441.5	1127.5	300.6	-4.5	1266.3	46.9	1219.4
BE	2007	13.1	73.3	26.3	0.1	60.8	9.6	51.1
	2008	12.5	73.4	25.0	0.1	61.5	8.5	53.0
BG	2007	9.9	15.0	3.6	-0.2	21.0	0.0	21.0
	2008	10.1	15.0	4.2	-0.5	20.4	0.0	20.4
CZ	2007	33.6	20.3	8.6	0.3	45.3	0.0	45.3
	2008	33.0	21.0	8.8	-0.4	44.5	0.0	44.5
DK	2007	26.5	13.5	19.3	0.1	21.2	1.1	20.1
	2008	26.0	14.4	19.7	-1.2	19.9	1.0	18.9
DE	2007	131.1	240.3	44.4	3.4	330.3	3.1	327.2
	2008	127.2	248.0	41.7	0.7	334.3	3.1	331.2
EE	2007	4.3	2.2	0.3	-0.1	5.9	0.0	5.9
	2008	4.2	1.9	0.2	0.1	5.8	0.0	5.8
IE	2007	1.4	14.8	1.3	0.3	15.3	0.1	15.2
	2008	1.5	15.1	1.3	-0.1	15.3	0.1	15.2
EL	2007	11.5	31.6	7.4	-0.3	35.5	3.3	32.3
	2008	11.3	32.7	7.3	-0.3	36.4	3.2	33.2
ES	2007	28.2	136.6	13.0	1.4	153.1	8.7	144.4
	2008	28.1	135.6	13.3	-2.8	147.6	9.0	138.5
FR	2007	129.3	167.2	34.3	2.4	265.0	3.0	262.0
	2008	128.0	173.1	34.7	-0.7	266.0	2.6	263.4
IT	2007	26.5	189.4	26.5	1.3	191.4	3.0	188.5
	2008	26.5	184.2	29.3	0.4	182.6	3.8	178.8
CY	2007	0.1	2.9	0.0	0.1	3.0	0.3	2.7
	2008	0.1	3.0	0.0	0.0	3.1	0.3	2.8
LV	2007	1.8	3.7	0.3	0.1	4.9	0.2	4.7
	2008	1.8	3.5	0.3	0.2	4.8	0.2	4.6
LT	2007	3.6	10.2	4.5	-0.1	9.3	0.1	9.2
	2008	3.6	13.2	7.7	0.1	9.2	0.1	9.1
LU	2007	82	4.7	0.3	0.0	4.6	0.0	4,575
	2008	83	4.5	0.2	0.0	4.4	0.0	4,443
HU	2007	10.2	20.8	4.6	0.5	26.9	0.0	26.9
	2008	10.2	21.9	4.9	-0.6	26.6	0.0	26.6
MT	2007	-	1.0	-	-	1.0	0.0	1.0
	2008	-	-	-	-	-	-	-
NL	2007	61.5	159.9	122.7	-0.3	98.9	16.5	82.3
	2008	67.5	157.7	126.4	-1.3	98.1	15.9	82.1
AT	2007	9.9	28.5	5.8	-0.3	32.6	0.0	32.6
	2008	9.8	28.4	6.1	-0.3	31.9	0.0	31.9
PL	2007	71.0	41.1	15.9	-1.4	94.7	0.3	94.4
	2008	69.2	43.9	12.4	-0.6	100.0	0.3	99.8
PT	2007	4.2	24.5	2.7	0.2	26.3	0.5	25.7
	2008	3.9	23.9	2.6	0.0	25.2	0.6	24.6
RO	2007	27.9	17.5	4.8	-0.4	40.3	0.0	40.3
	2008	28.7	16.5	5.4	-0.9	38.8	0.0	38.8
SI	2007	3.2	4.4	0.9	0.0	6.6	0.0	6.6
	2008	3.4	5.0	1.2	0.0	7.1	0.0	7.1
SK	2007	6.0	17.0	5.0	-0.1	17.9	0.0	17.9
	2008	6.4	16.3	4.6	0.0	18.0	0.0	18.0
FI	2007	15.3	26.3	6.4	1.7	36.8	0.0	36.8
	2008	15.4	26.5	6.8	-0.1	34.9	0.0	34.9
SE	2007	32.6	30.4	11.9	0.1	51.2	2.2	49.0
	2008	32.2	33.0	13.7	-0.9	50.7	2.1	48.6
UK	2007	171.2	134.7	87.3	3.4	222.3	1.9	220.4
	2008	162.9	140.4	85.0	0.6	219.1	2.4	216.7

(1) Including hard coal recovered

(2) Including Intra-EU trade

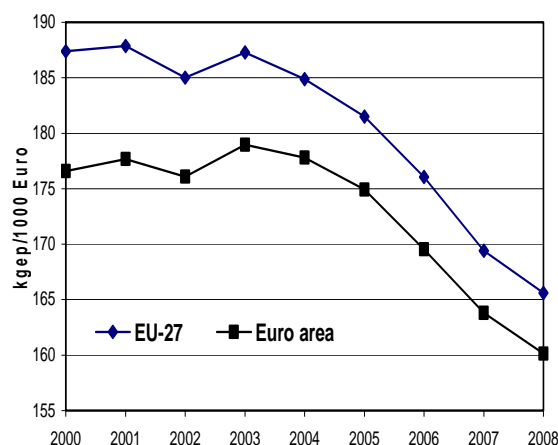
(3) + Decrease in stocks, - Increase in stocks

Source: Eurostat ([nrg_100a](#))

Energy intensity

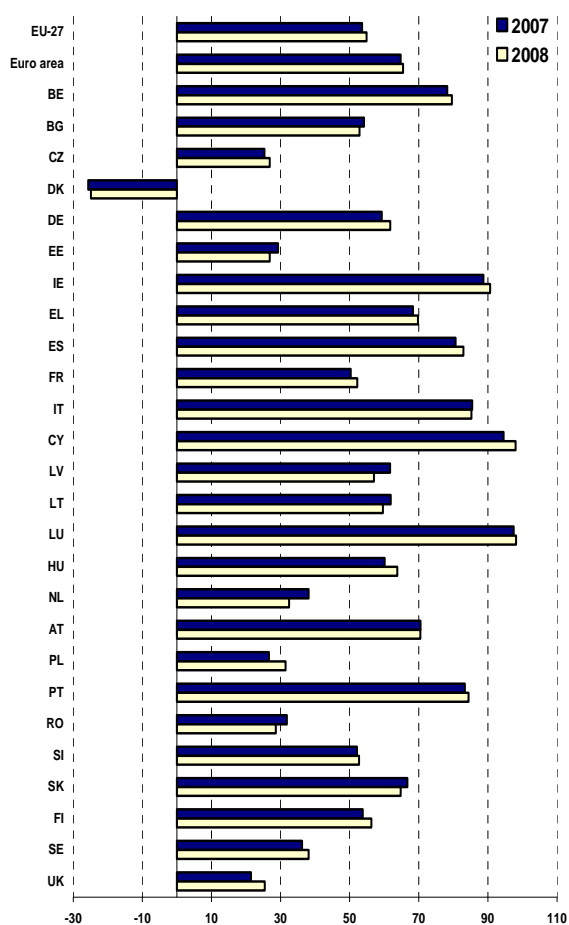
Over the past decade energy intensity (gross inland consumption divided by gross domestic product) continued to drop while GDP continued a general upward trend over the same period. Exceptionally cold weather conditions may account for years registering high energy consumption (see also graph "Annual relative degree-days 1980-2008" on page 5).

Energy intensity is a measure of how much energy is used to produce a unit of economic output. The decoupling of increasing economic activity from increasing energy consumption is a goal for sustainable development.



Source: Eurostat ([nrg_ind_332a](#))

Energy dependence



Energy dependence rate
Source: Eurostat ([nrg_100a](#))

When compared to 2007 EU-27 net imports (imports minus exports) increased by 1.6% in 2008. Net imports of energy as a percentage of gross consumption (i.e. gross inland consumption plus bunkers) show national energy dependence. The EU-27 energy dependence rate (EDR) showed an increase, going from 53.6% in 2007 to 54.9% in 2008.

The United Kingdom, who, for the first time in over a decade became a net importer in 2004, continued the trend in 2008 with an EDR of 25.4%.

On the other hand, with an EDR of -24.9% in 2008, compared with -25.7% in 2007, Denmark confirmed the trend set in 1999 as a net energy exporter. All the other Member States were overall net importers of energy.

In 2008, all Member States except Bulgaria, Estonia, Latvia, Lithuania, the Netherlands, Romania and Slovakia increased their EDR. Italy and Austria remained almost stable.

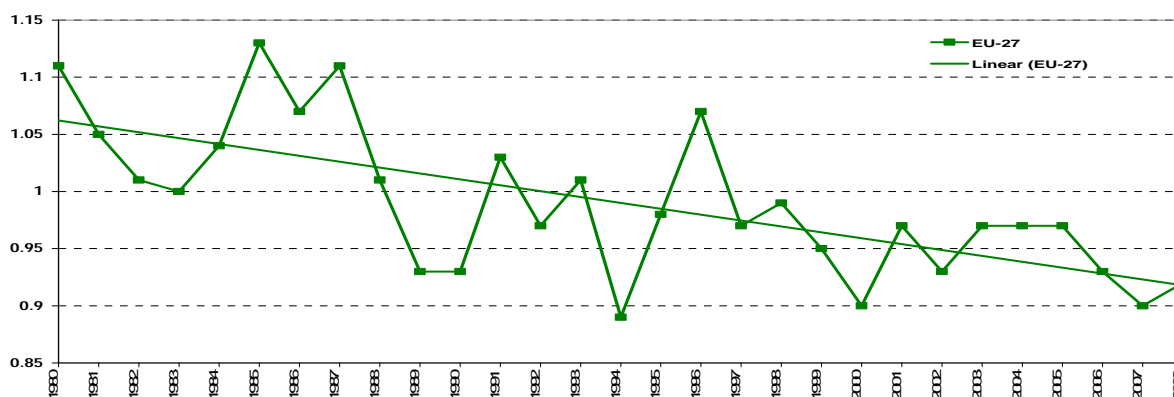
The European Union's main extra-EU energy suppliers differ according to the type of energy being imported. In 2008, EU-27 imported Natural Gas from Russia (36.8%), Norway (26.1%) and Algeria (15.4%). Crude Oil and Feedstocks came from Russia (32.2%), Norway (14.1%), Libya (10.2%) and Saudi Arabia (6.6%). Coal was imported mainly from Russia (25.9%), South Africa (17.5%), USA (13.7%) and Colombia (12.7%).

Climate profile - heating degree days

Actual heating degree days
January - December

		Jan	Feb	Mar	Apr	May	Jun	Jul	Aug	Sep	Oct	Nov	Dec	Total
EU-27	2007	453	439	354	224	131	42	25	33	119	234	405	484	2943
	2008	466	404	402	270	134	57	23	38	136	222	372	484	3008
BE	2007	352	323	319	141	96	17	26	28	100	236	352	447	2437
	2008	378	359	373	273	59	53	18	7	126	234	343	485	2707
BG	2007	362	364	312	187	24	1	0	1	40	151	381	534	2357
	2008	587	413	274	153	67	0	1	0	78	123	298	436	2430
CZ	2007	455	411	382	225	120	15	21	21	163	308	484	574	3175
	2008	504	436	438	290	132	29	14	15	161	273	388	523	3204
DK	2007	404	441	355	250	195	48	34	30	128	280	386	437	2988
	2008	431	384	441	312	163	69	15	6	119	248	359	470	3017
DE	2007	404	380	346	177	109	19	23	22	123	276	420	500	2798
	2008	437	397	405	293	100	35	12	9	142	251	375	516	2971
EE	2007	595	767	439	380	210	48	8	35	186	335	524	514	4041
	2008	581	494	539	338	246	99	13	42	221	282	454	563	3873
IE	2007	341	325	337	214	202	97	81	72	108	180	260	335	2552
	2008	345	332	354	295	144	135	61	50	155	257	306	392	2827
EL	2007	284	272	221	113	4	0	0	0	3	51	196	347	1489
	2008	357	307	180	97	20	0	0	0	16	28	144	284	1434
ES	2007	344	239	258	150	68	11	1	2	14	91	261	350	1789
	2008	306	248	241	146	82	19	2	0	21	102	296	366	1829
FR	2007	351	288	315	107	83	17	9	12	72	187	345	425	2212
	2008	362	322	333	243	50	35	4	4	96	184	315	449	2397
IT	2007	313	268	245	79	21	4	2	3	23	108	264	385	1715
	2008	346	320	264	159	20	5	1	1	39	49	214	358	1776
CY	2007	208	160	122	34	0	0	0	0	0	0	29	141	694
	2008	244	199	54	11	0	0	0	0	0	0	7	126	640
LV	2007	559	746	411	376	181	31	8	31	171	331	514	530	3889
	2008	586	481	512	315	224	76	0	23	200	286	458	564	3725
LT	2007	532	700	391	350	164	21	15	33	147	320	513	538	3724
	2008	581	469	483	291	199	42	0	17	185	278	447	553	3543
LU	2007	408	355	351	125	108	26	41	40	130	253	409	493	2738
	2008	436	384	412	302	63	41	23	8	151	262	383	530	2993
HU	2007	406	362	292	156	39	0	0	0	88	222	415	572	2552
	2008	515	400	341	181	48	0	1	0	112	154	326	462	2541
MT	2007	64	88	78	14	0	0	0	0	0	3	11	73	332
	2008	56	114	47	11	0	0	0	0	0	0	0	80	307
NL	2007	345	338	311	161	109	13	19	19	92	244	334	438	2424
	2008	367	370	373	274	82	46	11	11	113	233	333	482	2694
AT	2007	473	401	385	189	111	15	29	23	165	301	479	601	3171
	2008	519	441	431	294	123	34	24	15	163	255	403	551	3252
PL	2007	453	506	359	268	119	13	15	23	132	302	481	551	3222
	2008	515	430	435	281	145	26	4	13	156	251	387	522	3164
PT	2007	274	187	186	108	41	3	0	0	2	26	159	272	1258
	2008	224	167	183	101	62	2	1	0	1	53	227	279	1299
RO	2007	430	413	322	210	38	0	1	1	74	215	445	600	2750
	2008	611	445	332	187	69	1	0	2	110	166	362	492	2776
SI	2007	433	358	327	159	66	3	7	0	109	251	401	563	2678
	2008	480	411	383	240	77	13	3	0	127	188	355	504	2782
SK	2007	472	420	347	228	83	4	5	4	145	284	469	615	3076
	2008	537	457	417	247	105	8	7	4	145	225	368	504	3023
FI	2007	817	928	558	477	318	150	46	87	296	402	632	600	5312
	2008	714	662	717	489	350	173	84	170	323	421	595	636	5336
SE	2007	754	748	538	429	316	138	88	115	291	411	608	632	5068
	2008	648	587	664	462	320	160	79	162	287	423	596	688	5076
UK	2007	357	344	348	221	216	100	81	83	130	220	316	403	2818
	2008	377	363	384	318	159	132	62	52	147	269	336	443	3043

Annual Relative Degree-Days 1980 - 2008



Source: Eurostat ([nrg_esdgr_a](#)) and JRC IPSC/Agrifish Unit/MARS-STAT Action

**Subdivision of principal aggregates
of the energy balance sheet**

Million tonnes of oil equivalent

	EU-27			Euro area			BE			BG			CZ		
	2007	2008	2008/2007	2007	2008	2008/2007	2007	2008	2008/2007	2007	2008	2008/2007	2007	2008	2008/2007
1. Gross Inland Consumption ⁽¹⁾	1768.3	1753.0	-0.9%	1231.1	1219.4	-0.9%	51.1	53.0	3.6%	21.0	20.4	-2.9%	45.3	44.5	-1.9%
of which:															
Hard coal	225.8	211.0	-6.6%	123.8	111.6	-9.9%	3.7	4.1	12.1%	3.3	3.0	-8.8%	6.2	5.4	-13.5%
Lignite	99.0	95.6	-3.4%	54.3	51.4	-5.2%	0.0	0.0		4.8	4.9	1.4%	14.8	14.2	-4.2%
Crude oil & petroleum products	647.2	637.5	-1.5%	485.0	478.9	-1.3%	20.7	22.1	7.0%	5.6	5.1	-8.7%	9.7	9.8	0.9%
Natural gas	429.3	440.8	2.7%	291.1	299.6	2.9%	12.6	12.9	2.2%	2.9	2.8	-2.7%	7.0	7.0	-0.1%
Nuclear energy	230.8	228.6	-0.9%	180.0	179.6	-0.2%	11.8	11.2	-5.5%	3.7	4.0	8.6%	6.8	6.9	1.4%
Hydro & wind plus electricity trade balance	30.9	34.1	10.4%	22.6	24.1	6.5%	0.7	1.0	48.6%	-0.1	-0.2	-119.4%	-1.2	-0.8	34.2%
Biomass & waste, solar & geothermal heat	105.4	105.4e		74.1	74.1e		1.7	1.7e		0.7	0.7e		2.0	2.0e	
2. Net Imports ⁽²⁾	976.1	991.3	1.6%	827.8	829.3	0.2%	47.5	48.9	2.8%	11.4	10.8	-5.2%	11.5	11.9	4.0%
of which:															
Hard coal	132.5	132.6	0.1%	98.1	93.9	-4.2%	4.2	4.0	-3.6%	3.2	3.2	1.2%	-2.6	-2.7	-4.4%
Crude oil	551.4	558.8	1.3%	481.9	476.7	-1.1%	33.0	33.8	2.6%	7.1	7.2	1.5%	7.2	8.1	12.8%
Natural gas	257.5	270.3	5.0%	208.8	216.2	3.6%	12.6	11.8	-6.3%	2.7	2.8	2.1%	6.7	6.9	3.8%
Petroleum products	11.0	8.8	-19.5%	17.7	23.4	32.4%	-3.5	-1.4	60.6%	-1.4	-2.0	-45.7%	2.2	1.4	-36.4%
Electricity	0.6	1.1	84.2%	2.3	1.7	-25.7%	0.6	0.9	52.0%	-0.4	-0.5	-19.4%	-1.4	-1.0	29.0%
Biomass & waste	2.3	2.3e		2.4	2.4e		0.5	0.5e		0.0	0.0e		-0.2	-0.2e	
3. Production of Primary Energy	834.2	823.4	-1.3%	441.5	441.5	0.0%	13.1	12.5	-4.9%	9.9	10.1	2.9%	33.6	33.0	-1.9%
of which:															
Hard coal ⁽³⁾	88.2	82.5	-6.4%	20.4	16.6	-18.5%	-	0.0	-	0.0	0.0	73.7%	8.7	8.5	-2.8%
Lignite	97.6	95.0	-2.7%	53.0	50.7	-4.3%	-	-	-	4.8	4.9	1.5%	15.2	14.6	-3.5%
Crude oil and condensates	116.8	111.0	-5.0%	17.2	17.2	-0.3%	-	-	-	0.0	0.0	0.0%	0.4	0.4	8.4%
Natural gas	167.3	170.1	1.6%	78.7	83.2	5.6%	-	-	-	0.2	0.2	-26.4%	0.2	0.2	-0.8%
Nuclear energy	230.8	228.6	-0.9%	180.0	179.6	-0.2%	11.8	11.2	-5.5%	3.7	4.0	8.6%	6.8	6.9	1.4%
Hydro & wind	30.3	33.0	9.0%	20.4	22.4	10.1%	0.1	0.1	21.6%	0.3	0.2	-20.5%	0.2	0.2	4.1%
Biomass & waste, solar & geothermal heat	103.2	103.2e		71.8	71.8e		1.2	1.2e		0.7	0.7e		2.2	2.2e	
4. Energy Dependence Rate (EDR) ⁽⁴⁾															
Total	53.6%	54.9%		64.7%	65.5%		78.2%	79.5%		54.2%	52.8%		25.3%	26.9%	
of which:															
Crude oil & petroleum products	83.0%	84.5%		96.1%	97.2%		97.7%	101.8%		101.5%	100.5%		97.0%	97.2%	
5. Gross Inland Consumption Per Capita in kgoe	3571.7	3524.0		3788.1	3729.9		4832.4	4968.5		2729.8	2665.0		4408.1	4284.1	

(1) GIC = primary production + recovered products + imports + stock changes - bunkers

(2) Net Imports = Imports minus exports

(3) Including recovered products

(4) EDR = Net imports/[GIC+bunkers]; Negative dependency rate indicates a net exporter. Positive values greater than 100% indicate a stocks build-up during the reference year

e: Estimate

**Subdivision of principal aggregates
of the energy balance sheet**

Million tonnes of oil equivalent

	DK			DE			EE			IE			EL		
	2007	2008	2008/2007	2007	2008	2008/2007	2007	2008	2008/2007	2007	2008	2008/2007	2007	2008	2008/2007
1. Gross Inland Consumption ⁽¹⁾	20.1	18.9	-6.0%	327.2	331.2	1.2%	5.9	5.8	-1.8%	15.2	15.2	0.1%	32.3	33.2	3.0%
of which:															
Hard coal	4.5	4.0	-11.0%	45.2	42.5	-6.0%	0.1	0.0	-57.1%	1.6	1.6	0.0%	0.4	0.4	0.0%
Lignite	-	-	-	38.6	37.3	-3.3%	3.6	3.4	-3.7%	0.6	0.6	0.0%	9.9	9.8	-1.6%
Crude oil & petroleum products	8.1	7.2	-11.2%	109.8	115.9	5.6%	1.1	1.1	-1.9%	8.1	7.9	-2.6%	16.9	17.8	5.5%
Natural gas	4.0	4.0	0.3%	76.6	77.0	0.4%	0.8	0.7	-6.2%	4.3	4.5	5.7%	3.3	3.5	4.6%
Nuclear energy	-	-	-	33.8	35.8	5.7%	-	-	-	-	-	-	-	-	-
Hydro & wind plus electricity trade balance	0.5	0.7	34.6%	0.3	0.0	-118.8%	-0.2	-0.1	71.0%	0.3	0.3	-5.5%	0.4	0.5	8.6%
Biomass & waste, solar & geothermal heat	2.9	2.9e		22.9	22.9e		0.6	0.6e		0.2	0.2e		1.3	1.3e	
2. Net Imports ⁽²⁾	-5.4	-5.0	9.1%	195.9	206.4	5.4%	1.7	1.6	-9.9%	13.6	13.8	2.1%	24.3	25.4	4.8%
of which:															
Hard coal	4.6	4.4	-5.1%	26.9	27.3	1.5%	0.1	0.0	-57.1%	1.5	1.5	0.0%	0.4	0.4	0.0%
Crude oil	-7.4	-6.3	14.7%	106.1	105.3	-0.8%	-	-	-	2.9	3.2	11.3%	19.3	18.2	-5.5%
Natural gas	-4.0	-4.8	-18.3%	61.8	64.7	4.7%	0.8	0.7	-6.2%	3.9	4.1	6.0%	3.4	3.5	2.9%
Petroleum products	1.1	1.6	39.5%	0.5	9.2		1.3	1.0	-17.6%	5.1	4.9	-3.9%	-1.5	0.7	149.1%
Electricity	-0.1	0.1	253.4%	-1.5	-1.7	-17.2%	-0.2	-0.1	66.6%	0.1	0.0	-66.1%	0.2	0.3	24.7%
Biomass & waste	0.4	0.4e		0.0	0.0e		-0.1	-0.1e		0.0	0.0e		0.0	0.0e	
3. Production of Primary Energy	26.5	26.0	-1.9%	131.1	127.2	-3.0%	4.3	4.2	-3.3%	1.4	1.5	4.0%	11.5	11.3	-1.7%
of which:															
Hard coal ⁽³⁾	-	-	-	15.7	12.4	-20.8%	-	-	-	-	0.0	-	-	-	-
Lignite	-	-	-	38.9	37.8	-2.8%	3.6	3.4	-4.1%	0.6	0.6	0.0%	9.9	9.8	-1.6%
Crude oil and condensates	15.2	14.0	-7.5%	5.2	4.9	-4.6%	-	-	-	-	-	-	0.1	0.1	-23.5%
Natural gas	8.2	8.8	8.0%	12.9	11.7	-8.9%	-	-	-	0.4	0.4	-0.2%	0.0	0.0	-27.3%
Nuclear energy	-	-	-	33.8	35.8	5.7%	-	-	-	-	-	-	-	-	-
Hydro & wind	0.6	0.6	-3.4%	1.7	1.7	-2.8%	0.0	0.0	32.8%	0.2	0.3	26.3%	0.2	0.2	-9.6%
Biomass & waste, solar & geothermal heat	2.6	2.6e		22.9	22.9e		0.7	0.7e		0.2	0.2e		1.3	1.3e	
4. Energy Dependence Rate (EDR) ⁽⁴⁾															
Total	-25.7%	-24.9%		59.3%	61.7%		29.3%	26.9%		88.7%	90.7%		68.3%	69.8%	
of which:															
Crude oil & petroleum products	-68.6%	-62.0%		94.4%	96.2%		110.9%	93.2%		96.8%	101.2%		100.6%	101.3%	
5. Gross Inland Consumption Per Capita in kgoe	3691.6	3452.5		3974.8	4028.7		4421.8	4348.6		3517.9	3450.7		2889.1	2964.2	

(1) GIC = primary production + recovered products + imports + stock changes - bunkers

(2) Net Imports = Imports minus exports

(3) Including recovered products

(4) EDR = Net imports/[GIC+bunkers]; Negative dependency rate indicates a net exporter. Positive values greater than 100% indicate a stocks build-up during the reference year

e: Estimate

**Subdivision of principal aggregates
of the energy balance sheet**

Million tonnes of oil equivalent

	ES			FR			IT			CY			LV		
	2007	2008	2008/2007	2007	2008	2008/2007	2007	2008	2008/2007	2007	2008	2008/2007	2007	2008	2008/2007
1. Gross Inland Consumption ⁽¹⁾	144.4	138.5	-4.1%	262.0	263.4	0.5%	188.5	178.8	-5.1%	2.7	2.8	2.7%	4.7	4.6	-2.8%
of which:															
Hard coal	19.1	13.1	-31.4%	13.5	12.8	-5.3%	16.8	16.9	0.5%	0.0	0.0	-20.0%	0.1	0.1	-4.1%
Lignite	1.0	-		-	-		-	-		-	-		0.0	0.0	-21.4%
Crude oil & petroleum products	70.5	67.7	-4.0%	87.5	89.7	2.6%	85.4	75.6	-11.5%	2.6	2.7	3.1%	1.6	1.5	-5.7%
Natural gas	31.7	34.8	9.8%	38.3	39.6	3.4%	69.5	69.4	-0.2%	-	-		1.4	1.3	-2.0%
Nuclear energy	13.4	14.2	6.5%	108.5	105.7	-2.6%	-	-		-	-		-	-	
Hydro & wind plus electricity trade balance	3.2	3.1	-2.6%	0.5	1.9	274.5%	7.1	7.4	3.7%	-	-		0.5	0.5	-1.5%
Biomass & waste, solar & geothermal heat	5.5	5.5e		13.6	13.6e		9.5	9.5e		0.1	0.1e		1.2	1.2e	
2. Net Imports ⁽²⁾	123.5	122.3	-1.0%	133.3	138.8	4.1%	163.6	155.7	-4.8%	2.9	3.0	5.6%	3.0	2.7	-9.2%
of which:															
Hard coal	14.4	11.4	-20.4%	12.1	13.8	14.2%	16.5	16.6	0.6%	0.0	0.0	20.6%	0.1	0.1	10.7%
Crude oil	57.5	58.5	1.7%	80.4	82.6	2.7%	86.7	81.1	-6.5%	-	-		-	-	
Natural gas	31.3	35.1	12.1%	37.0	38.8	4.9%	60.5	62.8	3.8%	-	-		1.3	1.1	-16.7%
Petroleum products	19.9	16.5	-17.4%	7.8	6.3	-19.9%	-12.2	-14.9	-22.7%	2.8	3.0	5.5%	1.7	1.7	-1.2%
Electricity	-0.5	-1.0	-91.5%	-4.9	-4.2	15.1%	3.9	3.4	-13.8%	-	-		0.3	0.2	-15.8%
Biomass & waste	0.0	0.0e		0.3	0.3e	0.0%	0.8	0.8e		0.0	0.0e		-0.4	-0.4e	
3. Production of Primary Energy	28.2	28.1	-0.5%	129.3	128.0	-1.0%	26.5	26.5	0.0%	0.1	0.1	0.0%	1.8	1.8	1.9%
of which:															
Hard coal ⁽³⁾	4.5	4.1	-8.7%	0.2	0.1	-50.5%	-	-		-	-		-	-	
Lignite	1.0	-		-	-		-	-		-	-		0.0	0.0	
Crude oil and condensates	0.2	0.1	-9.7%	1.0	2.1	105.2%	6.6	6.3	-4.5%	-	-		-	-	
Natural gas	0.0	0.0	-10.4%	0.9	0.8	-11.2%	8.0	7.5	-6.3%	-	-		-	-	
Nuclear energy	13.4	14.2	6.5%	108.5	105.7	-2.6%	-	-		-	-		-	-	
Hydro & wind	3.7	4.1	9.9%	5.4	6.0	11.9%	3.2	4.0	25.2%	-	-		0.2	0.3	13.9%
Biomass & waste, solar & geothermal heat	5.5	5.5e		13.2	13.2e		8.7	8.7e		0.1	0.1e		1.6	1.6e	
4. Energy Dependence Rate (EDR) ⁽⁴⁾															
Total	80.7%	82.9%		50.3%	52.2%		85.5%	85.3%		94.5%	98.0%		61.7%	57.0%	
of which:															
Crude oil & petroleum products	99.7%	100.3%		97.7%	97.0%		92.5%	91.0%		97.0%	100.2%		99.8%	101.0%	
5. Gross Inland Consumption Per Capita in kgoe	3247.5	3059.6		4132.5	4131.4		3187.0	2999.5		3529.0	3577.1		2063.6	2016.0	

(1) GIC = primary production + recovered products + imports + stock changes - bunkers

(2) Net Imports = Imports minus exports

(3) Including recovered products

(4) EDR = Net imports/[GIC+bunkers]; Negative dependency rate indicates a net exporter. Positive values greater than 100% indicate a stocks build-up during the reference year

e: Estimate

**Subdivision of principal aggregates
of the energy balance sheet**

Million tonnes of oil equivalent

	LT			LU			HU			MT			NL		
	2007	2008	2008/2007	2007	2008	2008/2007	2007	2008	2008/2007	2007	2008	2008/2007	2007	2008	2008/2007
1. Gross Inland Consumption ⁽¹⁾	9.2	9.1	-0.6%	4.6	4.4	-2.9%	26.9	26.6	-1.3%	1.0	-	-	82.3	82.1	-0.2%
of which:															
Hard coal	0.2	0.2	-15.2%	0.1	0.1	-0.9%	1.0	1.0	-2.8%	-	-	-	8.3	7.7	-6.5%
Lignite	0.0	0.0	28.6%	-	-	-	2.0	2.0	1.3%	-	-	-	-	-	-
Crude oil & petroleum products	2.8	3.0	7.7%	2.9	2.8	-2.0%	7.5	7.3	-3.3%	1.0	-	-	35.1	32.9	-6.3%
Natural gas	2.9	2.6	-10.3%	1.2	1.1	-9.2%	10.8	10.8	-0.3%	-	-	-	33.4	36.0	7.9%
Nuclear energy	2.5	2.6	0.6%	-	-	-	3.8	3.7	-1.9%	-	-	-	1.0	1.0	-0.8%
Hydro & wind plus electricity trade balance	-0.1	0.0	49.4%	0.4	0.4	9.7%	0.4	0.4	4.6%	-	-	-	1.8	1.7	-5.1%
Biomass & waste, solar & geothermal heat	0.8	0.8e	-	0.1	0.1e	-	1.4	1.4e	-	-	-	-	2.7	2.7e	-
2. Net Imports ⁽²⁾	5.7	5.5	-4.6%	4.5	4.4	-2.2%	16.2	16.9	4.7%	1.0	-	-	37.7	31.9	-15.5%
of which:															
Hard coal	0.2	0.2	6.1%	0.1	0.1	-0.9%	1.2	1.2	-1.0%	-	-	-	8.8	7.7	-12.2%
Crude oil	4.6	9.0	95.1%	-	-	-	6.4	6.3	-1.6%	-	-	-	57.7	56.5	-2.2%
Natural gas	3.0	2.5	-16.0%	1.2	1.1	-9.2%	8.4	9.4	10.9%	-	-	-	-21.5	-25.4	-17.8%
Petroleum products	-3.0	-6.5	-115.0%	2.8	2.8	-0.8%	-0.4	-0.6	-34.6%	1.0	-	-	-9.3	-8.8	5.8%
Electricity	-0.1	-0.1	30.1%	0.3	0.4	9.7%	0.3	0.3	0.7%	-	-	-	1.5	1.4	-10.7%
Biomass & waste	0.0	0.0e	-	0.0	0.0e	-	0.0	0.0e	-	-	-	-	0.5	0.5e	-
3. Production of Primary Energy	3.6	3.6	-0.8%	0.1	0.1	1.6%	10.2	10.2	0.2%	-	-	-	61.5	67.5	9.7%
of which:															
Hard coal ⁽³⁾	-	-	-	-	-	-	-	-	-	-	-	-	-	-	-
Lignite	0.0	0.0	-	-	-	-	1.8	1.7	-4.2%	-	-	-	-	-	-
Crude oil and condensates	0.3	0.2	-23.8%	-	-	-	1.2	1.4	8.5%	-	-	-	3.1	2.5	-17.9%
Natural gas	-	-	-	-	-	-	2.0	2.0	2.3%	-	-	-	54.9	61.4	11.8%
Nuclear energy	2.5	2.6	0.6%	-	-	-	3.8	3.7	-1.9%	-	-	-	1.0	1.0	-0.8%
Hydro & wind	0.0	0.0	20.6%	0.0	0.0	8.9%	0.0	0.0	65.2%	-	-	-	0.3	0.4	22.6%
Biomass & waste, solar & geothermal heat	0.8	0.8e	-	0.1	0.1e	-	1.4	1.4e	-	-	-	-	2.2	2.2e	-
4. Energy Dependence Rate (EDR) ⁽⁴⁾															
Total	61.9%	59.6%		97.4%	98.2%		60.2%	63.8%		100.0%			38.1%	32.5%	
of which:															
Crude oil & petroleum products	90.9%	91.2%		98.8%	100.1%		81.5%	80.5%		100.0%			93.7%	97.6%	
5. Gross Inland Consumption Per Capita in kgoe	2704.8	2702.3		9607.8	9184.3		2671.5	2643.1		2555.2			5033.4	5007.4	

(1) GIC = primary production + recovered products + imports + stock changes - bunkers

(2) Net Imports = Imports minus exports

(3) Including recovered products

(4) EDR = Net imports/[GIC+bunkers]; Negative dependency rate indicates a net exporter. Positive values greater than 100% indicate a stocks build-up during the reference year

e: Estimate

**Subdivision of principal aggregates
of the energy balance sheet**

Million tonnes of oil equivalent

	AT			PL			PT			RO			SI		
	2007	2008	2008/2007	2007	2008	2008/2007	2007	2008	2008/2007	2007	2008	2008/2007	2007	2008	2008/2007
1. Gross Inland Consumption ⁽¹⁾	32.6	31.9	-2.2%	94.4	99.8	5.6%	25.7	24.6	-4.4%	40.3	38.8	-3.8%	6.6	7.1	7.5%
of which:															
Hard coal	3.7	3.2	-14.3%	41.9	44.9	7.2%	2.9	2.6	-12.0%	3.4	2.5	-26.4%	-	-	-
Lignite	0.0	0.0	14.6%	12.2	12.5	2.2%	-	-	-	7.0	6.8	-2.5%	1.1	1.2	7.4%
Crude oil & petroleum products	13.6	13.3	-1.8%	23.3	24.6	6.0%	14.2	13.2	-7.0%	10.2	10.1	-1.2%	2.5	2.9	17.5%
Natural gas	7.2	7.2	0.8%	12.3	12.5	1.5%	3.8	4.1	8.6%	13.4	12.0	-10.5%	0.9	0.8	-6.8%
Nuclear energy	-	-	-	-	-	-	-	-	-	1.7	2.9	68.4%	1.3	1.5	10.1%
Hydro & wind plus electricity trade balance	3.4	3.4	-0.3%	0.0	0.5		1.4	1.3	-7.6%	1.2	1.1	-7.0%	0.3	0.2	-32.1%
Biomass & waste, solar & geothermal heat	4.8	4.8e		4.7	4.7e		3.4	3.4e		3.4	3.4e		0.5	0.5e	
2. Net Imports ⁽²⁾	23.0	22.5	-2.4%	25.2	31.5	25.0%	21.9	21.2	-2.9%	12.8	11.1	-13.6%	3.5	3.8	8.7%
of which:															
Hard coal	2.8	2.1	-25.3%	-3.8	1.7	145.8%	2.9	2.3	-19.8%	2.9	2.0	-31.2%	-	-	-
Crude oil	7.6	7.9	2.9%	20.6	20.5	-0.4%	12.4	12.0	-3.6%	8.5	8.4	-1.3%	-	-	-
Natural gas	5.8	6.3	7.1%	8.2	9.1	10.6%	3.8	4.1	10.2%	4.0	3.7	-8.5%	0.9	0.8	-6.8%
Petroleum products	4.7	4.2	-11.4%	3.4	2.7	-21.8%	1.0	1.3	21.3%	-3.1	-3.3	-6.3%	2.5	3.0	17.1%
Electricity	0.6	0.4	-26.5%	-0.5	-0.1	76.8%	0.6	0.8	26.0%	-0.2	-0.4	-103.7%	0.0	-0.1	-757.7%
Biomass & waste	0.2	0.2e		0.0	0.0e					0.1	0.1e		0.0	0.0e	
3. Production of Primary Energy	9.9	9.8	-1.3%	71.0	69.2	-2.5%	4.2	3.9	-6.6%	27.9	28.7	2.6%	3.2	3.4	5.8%
of which:															
Hard coal ⁽³⁾	-	-	-	49.1	46.9	-4.4%	-	-	-	-	-	-	-	-	-
Lignite	-	-	-	12.2	12.6	3.5%	-	-	-	6.9	6.8	-2.2%	1.1	1.1	-1.0%
Crude oil and condensates	0.9	0.9	0.0%	0.7	0.7	4.9%	-	-	-	5.1	4.8	-5.6%	-	-	-
Natural gas	1.6	1.3	-17.1%	3.8	3.7	-5.2%	-	-	-	9.5	9.4	-1.2%	-	-	-
Nuclear energy	-	-	-	-	-	-	-	-	-	1.7	2.9	68.4%	1.3	1.5	10.1%
Hydro & wind	2.8	3.0	5.0%	0.5	0.6	22.7%	0.8	0.5	-34.6%	1.4	1.5	7.5%	0.3	0.3	22.4%
Biomass & waste, solar & geothermal heat	4.6	4.6e		4.8	4.8e		3.4	3.4e		3.3	3.3e		0.4	0.4e	
4. Energy Dependence Rate (EDR) ⁽⁴⁾															
Total	70.5%	70.4%		26.6%	31.5%		83.3%	84.4%		31.8%	28.6%		52.1%	52.7%	
of which:															
Crude oil & petroleum products	93.2%	94.0%		106.6%	97.0%		98.9%	101.2%		53.1%	50.7%		101.1%	100.8%	
5. Gross Inland Consumption Per Capita in kgoe	3930.3	3828.3		2477.2	2617.8		2426.2	2316.4		1869.1	1801.7		3301.8	3522.7	

(1) GIC = primary production + recovered products + imports + stock changes - bunkers

(2) Net Imports = Imports minus exports

(3) Including recovered products

(4) EDR = Net imports/[GIC+bunkers]; Negative dependency rate indicates a net exporter. Positive values greater than 100% indicate a stocks build-up during the reference year

e: Estimate

Subdivision of principal aggregates
of the energy balance sheet

Million tonnes of oil equivalent												
	SK			FI			SE			UK		
	2007	2008	2008/2007	2007	2008	2008/2007	2007	2008	2008/2007	2007	2008	2008/2007
1. Gross Inland Consumption ⁽¹⁾	17.9	18.0	0.4%	36.8	34.9	-5.2%	49.0	48.6	-1.0%	220.4	216.7	-1.7%
of which:												
Hard coal	3.6	3.2	-10.5%	4.9	3.4	-31.3%	2.4	2.1	-12.1%	38.7	36.1	-6.9%
Lignite	0.8	1.0	19.4%	2.3	1.6	-29.8%	0.3	0.3	7.1%	-	-	-
Crude oil & petroleum products	3.6	3.6	1.4%	10.5	10.4	-0.9%	12.9	13.4	4.4%	79.4	75.5	-5.0%
Natural gas	4.6	4.7	1.4%	3.7	4.0	6.6%	0.9	0.8	-9.8%	81.8	86.6	6.0%
Nuclear energy	4.3	4.6	6.9%	5.8	5.7	-2.3%	16.7	16.0	-4.2%	15.4	12.8	-16.7%
Hydro & wind plus electricity trade balance	0.5	0.3	-27.7%	2.3	2.6	12.0%	5.9	5.9	0.2%	1.3	2.0	50.1%
Biomass & waste, solar & geothermal heat	0.6	0.6e		7.3	7.3e		9.8	9.8e		3.8	3.8e	
2. Net Imports ⁽²⁾	12.0	11.7	-2.5%	19.8	19.6	-0.8%	18.6	19.3	3.9%	47.6	55.6	16.8%
of which:												
Hard coal	3.4	3.1	-8.2%	4.1	3.4	-16.3%	2.2	2.0	-10.1%	26.4	26.5	0.7%
Crude oil	6.1	5.9	-3.8%	12.1	11.8	-2.4%	18.0	21.0	16.9%	4.5	7.8	74.0%
Natural gas	4.5	4.5	-0.3%	3.7	4.0	6.6%	0.9	0.8	-9.8%	16.6	21.9	31.7%
Petroleum products	-2.6	-2.3	13.3%	-1.5	-0.9	38.0%	-2.8	-4.8	-73.0%	-5.7	-5.8	-1.5%
Electricity	0.1	0.0	-140.8%	1.1	1.1	1.6%	0.1	-0.2	-249.2%	0.4	0.9	111.4%
Biomass & waste	0.0	0.0e		-0.1	-0.1e		-	-	-	0.3	0.3e	
3. Production of Primary Energy	6.0	6.4	5.7%	15.3	15.4	0.1%	32.6	32.2	-1.2%	171.2	162.9	-4.9%
of which:												
Hard coal ⁽³⁾	-	-	-	-	-	-	-	-	-	10.0	10.6	5.3%
Lignite	0.6	0.6	14.7%	0.9	0.8	-11.2%	0.2	0.2	7.1%	-	-	-
Crude oil and condensates	0.1	0.1	4.4%	-	-	-	-	-	-	76.7	72.3	-5.8%
Natural gas	0.1	0.1	-19.1%	-	-	-	-	-	-	64.7	62.7	-3.1%
Nuclear energy	4.3	4.6	6.9%	5.8	5.7	-2.3%	16.7	16.0	-4.2%	15.4	12.8	-16.7%
Hydro & wind	0.4	0.4	-5.3%	1.2	1.5	21.0%	5.8	6.1	5.1%	0.9	1.0	18.8%
Biomass & waste, solar & geothermal heat	0.6	0.6e		7.4	7.4e		9.8	9.8e		3.5	3.5e	
4. Energy Dependence Rate (EDR) ⁽⁴⁾												
Total	66.7%	64.8%		53.8%	56.3%		36.2%	38.1%		21.4%	25.4%	
of which:												
Crude oil & petroleum products	97.5%	99.2%		100.8%	104.4%		99.8%	105.2%		4.2%	7.3%	
5. Gross Inland Consumption Per Capita in kgoe	3323.2	3332.9		6979.3	6584.7		5381.1	5287.9		3623.7	3542.2	

(1) GIC = primary production + recovered products + imports + stock changes - bunkers

(2) Net Imports = Imports minus exports

(3) Including recovered products

(4) EDR = Net imports/[GIC+bunkers]; Negative dependency rate indicates a net exporter. Positive values greater than 100% indicate a stocks build-up during the reference year

e: Estimate

ESSENTIAL INFORMATION – METHODOLOGICAL NOTES

N.B.1: The tonne of oil equivalent is a standardised conventional unit defined on the basis of one tonne of oil having a net calorific value of 41 868 kilojoules per kilogramme.

N.B.2: With the exception of the Actual Heating Degree Days on page 4 the EU aggregate does not include Malta for which data are not available.

N.B.3: Euro area is EA16 (BE, DE, IE, EL, ES, FR, IT, CY, LU, MY, NL, AT, PT, SI, SK, FI).

N.B.4: With the exception of the data for biomass & waste, solar and geothermal heat (renewables annual data collection), all data for 2007 and 2008 in this report represent the cumulative monthly figures, and may differ from annual data.

N.B.5: Heating degree days express the severity of the cold in a specific time period taking into consideration outdoor temperature and room temperature. Actual heating degree

days based on the Eurostat methodology are calculated by the Joint Research Centre at regional (NUTS 2), national and European level.

To establish a common and comparable basis, Eurostat uses the following method for the calculation of heating degree days

(18 °C - T_m) x d if T_m is lower than or equal to 15 °C
(heating threshold)

and are nil if T_m is greater than 15 °C

where T_m is the mean ((T_{min} + T_{max})/ 2) outdoor temperature over a period of d days.

Relative heating degree days are defined as the ratio of actual degree days to long-term average degree days (base period for the calculation of the long-term average is 1980-2004). This ratio indicates whether a given year was colder or warmer compared to the average

Further information

Data: [Eurostat Website: http://ec.europa.eu/eurostat](http://ec.europa.eu/eurostat)

Data on "Energy and Environment":

<http://epp.eurostat.ec.europa.eu/portal/page/portal/energy/data/database>

Select "Energy", "Energy statistics – quantities", "Energy statistics- supply, transformation, consumption"

Select "Energy", "Energy statistics – heating degree-days"

More information about "Energy and Environment":

<http://epp.eurostat.ec.europa.eu/portal/page/portal/energy/introduction>

Journalists can contact the media support service:

Bech Building Office A4/125 L - 2920 Luxembourg

Tel. (352) 4301 33408 Fax (352) 4301 35349

E-mail: eurostat-mediasupport@ec.europa.eu

European Statistical Data Support:

Eurostat set up with the members of the 'European statistical system' a network of support centres, which will exist in nearly all Member States as well as in some EFTA countries.

Their mission is to provide help and guidance to Internet users of European statistical data.

Contact details for this support network can be found on our Internet site:

<http://ec.europa.eu/eurostat/>

A list of worldwide sales outlets is available at the:

Office for Official Publications of the European Communities.

2, rue Mercier

L - 2985 Luxembourg

URL: <http://publications.europa.eu>

E-mail: info@publications.europa.eu

Manuscript completed on: 27.07.2009

Data extracted on: 15.06.2009

ISSN 1977-0316

Catalogue number:KS-SF-09-055-EN-N

© European Communities, 2009