

Winter season tourism trends 2005-2006

Statistics in focus

INDUSTRY, TRADE AND SERVICES

POPULATION AND SOCIAL CONDITIONS

30/2006

Author

**Chryssanthi
DIMITRAKOPOULOU**

Contents

Key facts 1

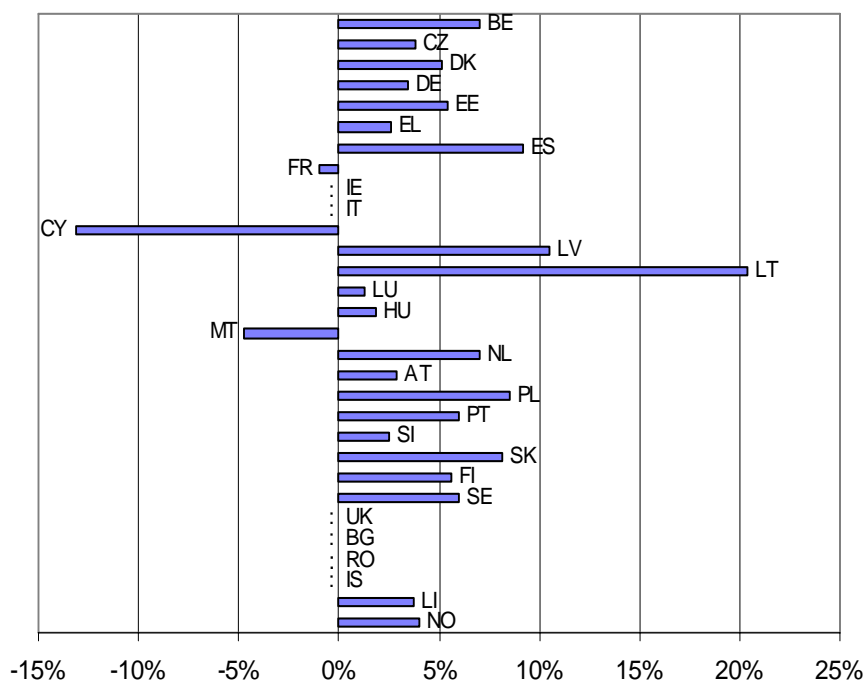
Nights spent by residents and non-residents on the increase. 2

Net occupancy rates highest in Austria..... 2

Key facts

- In terms of nights spent in Hotels and similar establishments, tourism in most European Union and EFTA countries increased during the 2005-2006¹ winter season compared to the same period in 2004-2005.
- In five Member States (Austria, Spain, Malta, Luxembourg and the Netherlands) the net occupancy rate of bed places in the peak month was more than 50%.

Figure 1: Percentage change in number of nights spent in hotels and similar establishments, November 2005 - April 2006 compared with the same period in 2004-2005



Data not available for IE, IT, BG, RO and IS

UK: The methodology changed in April 2005 and it is therefore not possible to make meaningful comparisons with previous years



¹ The winter season runs from November to April of the following year. For example, the 2005-2006 winter season ran from November 2005 to April 2006.

Nights spent by residents and non-residents on the increase

Comparing the monthly figures for the 2005-2006 winter season with the previous year, the number of nights spent by residents and non-residents in hotels and similar establishments increased in most EU and EFTA countries.

In Liechtenstein, Malta, Luxembourg and Cyprus the share of non-residents was more than 90%, while it was particularly low – around 20% - in both Sweden and Germany.

Table 1: Nights spent in hotels and similar establishments - non-residents and residents, November 2005 - April 2006 compared with November 2004 - April 2005

('000)	November 2004 - April 2005				November 2005 - April 2006				2005-6 / 2004-5 change (in%)		
	Total NR*+R*	NR*	R*	NR* % of Total	Total NR*+R*	NR*	R*	NR* % of Total	Total	NR*	R*
BE	6 056	4 388	1 668	72.5%	6 483	4 631	1 852	71.4%	7.1%	5.5%	11.0%
CZ	10 499	6 767	3 732	64.5%	10 902	7 151	3 751	65.6%	3.8%	5.7%	0.5%
DK	3 700	1 548	2 151	41.9%	3 888	1 581	2 308	40.7%	5.1%	2.1%	7.3%
DE	78 858	15 583	63 276	19.8%	81 568	16 478	65 090	20.2%	3.4%	5.7%	2.9%
EE	1 332	1 000	332	75.1%	1 404	980	424	69.8%	5.4%	-2.0%	27.8%
EL	7 366	2 863	4 503	38.9%	7 555	2 769	4 785	36.7%	2.6%	-3.3%	6.3%
ES	79 750	40 882	38 868	51.3%	87 049	44 783	42 266	51.4%	9.2%	9.5%	8.7%
FR	78 200	26 089	52 111	33.4%	77 456	25 369	52 087	32.8%	-1.0%	-2.8%	0.0%
IE	7 677	4 454	3 223	58.0%	:	:	:	:	:	:	:
IT	74 484	32 001	42 483	43.0%	:	:	:	:	:	:	:
CY	3 740	3 457	284	92.4%	3 250	2 985	265	91.8%	-13.1%	-13.6%	-6.5%
LV	816	463	353	56.7%	901	558	343	61.9%	10.5%	20.6%	-2.8%
LT	680	389	292	57.1%	819	423	396	51.7%	20.4%	8.9%	35.6%
LU	560	522	38	93.2%	568	530	37	93.4%	1.3%	1.6%	-1.8%
HU	5 542	3 155	2 387	56.9%	5 646	2 995	2 651	53.0%	1.9%	-5.1%	11.1%
MT	2 663	2 538	126	95.3%	2 537	2 394	142	94.4%	-4.8%	-5.7%	13.4%
NL	12 158	6 368	5 790	52.4%	13 013	6 745	6 268	51.8%	7.0%	5.9%	8.2%
AT	37 649	29 184	8 465	77.5%	38 730	29 812	8 919	77.0%	2.9%	2.2%	5.4%
PL	7 756	2 473	5 284	31.9%	8 420	2 608	5 812	31.0%	8.6%	5.5%	10.0%
PT	12 484	8 341	4 143	66.8%	13 227	8 750	4 477	66.2%	6.0%	4.9%	8.1%
SI	1 934	1 157	777	59.8%	1 982	1 213	769	61.2%	2.5%	4.9%	-1.0%
SK	2 839	1 453	1 386	51.2%	3 071	1 693	1 378	55.1%	8.2%	16.6%	-0.6%
FI	6 201	1 649	4 552	26.6%	6 547	1 832	4 715	28.0%	5.6%	11.1%	3.6%
SE	9 333	1 785	7 549	19.1%	9 888	1 901	7 987	19.2%	5.9%	6.5%	5.8%
UK**	73 678	23 048	50 630	31.3%	67 887	24 767	43 120	36.5%	:	:	:
BG	:	:	:	:	2 586	1 072	1 514	41.4%	:	:	:
RO	:	:	:	:	:	:	:	:	:	:	:
IS	366	241	125	65.8%	:	:	:	:	:	:	:
LI	54	52	1	97.3%	56	55	1	98.3%	3.7%	4.7%	-33.8%
NO	6 826	1 510	5 316	22.1%	7 102	1 528	5 574	21.5%	4.0%	1.2%	4.9%

(*) NR= non-residents / R=residents

(**) UK: The methodology changed in April 2005 and it is therefore not possible to make meaningful comparisons with previous years.

Net occupancy rates highest in Austria

During the 2005-2006 winter season, net occupancy rates of bed places in the Member States ranged from 19.6% in Lithuania (January) to 65.9% in Austria (February).

The highest occupancy rates during the peak month were 65.9% in Austria (February) and 56.2% in Spain (April), while the lowest was 30.3% in Lithuania (April).

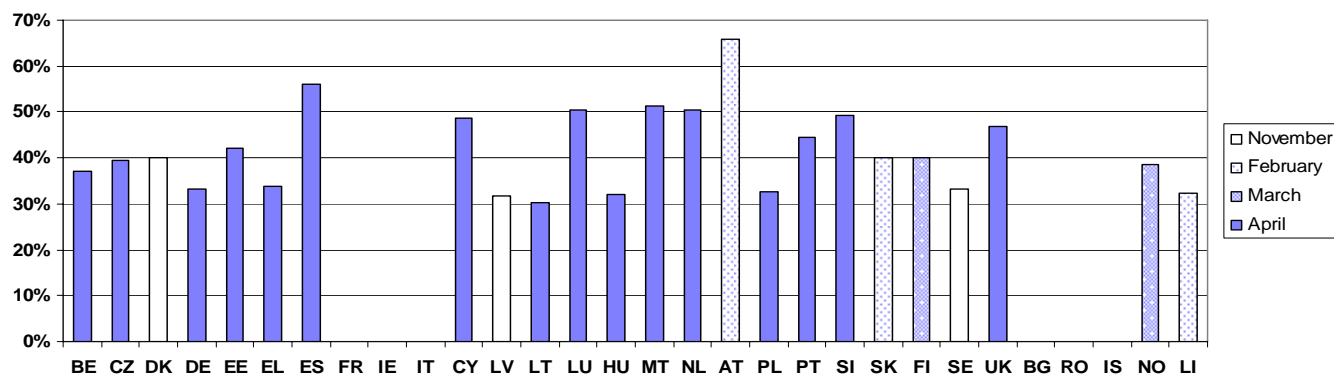
Occupancy rates for the whole 2005-2006 winter season were generally higher than last year in all Member States, with the exception of Malta, Luxembourg and Cyprus.

Table 2: Net occupancy rates of bed places in hotels and similar establishments

%	Winter season 2004-2005						Winter season 2005-2006						Change (in %)					
	2004		2005				2005		2006				2005/2004		2006/2005			
	Nov	Dec	Jan	Feb	Mar	Apr	Nov	Dec	Jan	Feb	Mar	Apr	Nov	Dec	Jan	Feb	Mar	Apr
BE	30.4	29.0	21.5	28.0	29.3	34.3	32.7	30.7	22.8	29.0	29.2	37.0	2.3	1.7	1.3	1.0	-0.1	2.7
CZ	30.7	28.6	27.7	33.1	33.1	33.2	29.6	28.0	28.2	33.1	31.9	39.5	-1.1	-0.6	0.5	0.0	-1.2	6.3
DK	38.1	25.8	24.0	29.0	31.0	38.0	40.0	29.0	27.0	30.0	34.0	37.0	1.9	3.2	3.0	1.0	3.0	-1.0
DE	28.7	27.0	25.2	28.6	29.1	31.5	29.7	28.2	25.4	29.0	29.5	33.1	1.0	1.2	0.2	0.4	0.4	1.6
EE	36.0	35.0	27.0	30.0	38.0	43.0	38.0	36.0	28.0	32.0	38.0	42.0	2.0	1.0	1.0	2.0	0.0	-1.0
EL	27.7	28.4	25.2	27.9	32.7	29.1	28.3	26.9	25.3	28.7	32.5	33.8	0.6	-1.5	0.1	0.8	-0.2	4.7
ES	43.5	40.1	39.5	45.8	49.4	47.0	45.3	39.4	40.3	46.3	49.0	56.2	1.8	-0.7	0.8	0.5	-0.4	9.2
FR	:	:	:	:	:	:	:	:	:	:	:	:	:	:	:	:	:	:
IE	36.0	31.0	27.0	36.0	42.0	45.0	40.0	35.0	:	:	:	:	4.0	4.0	:	:	:	:
IT	23.3	22.8	28.6	30.5	36.1	32.3	24.5	25.8	:	:	:	:	1.2	3.0	:	:	:	:
CY	42.5	26.5	29.0	34.9	45.5	46.7	44.9	27.7	29.1	32.2	41.5	48.5	2.4	1.2	0.1	-2.7	-4.0	1.8
LV	0.0	0.0	20.6	26.3	30.0	35.0	31.6	29.3	23.5	24.0	25.2	30.6	31.6	29.3	2.9	-2.3	-4.8	-4.4
LT	19.9	18.4	16.5	18.8	20.3	25.6	23.2	21.4	19.6	22.1	25.3	30.3	3.3	3.0	3.1	3.3	5.0	4.7
LU	27.7	23.5	24.8	25.9	27.4	28.2	26.2	22.5	22.5	24.8	26.1	28.1	-1.5	-1.0	-2.3	-1.1	-1.3	-0.1
HU	27.7	22.8	19.5	22.1	28.6	29.8	28.2	23.0	20.7	22.2	26.5	32.1	0.5	0.2	1.2	0.1	-2.1	2.3
MT	45.1	34.6	34.5	41.6	46.5	51.7	40.0	30.5	30.8	37.3	40.3	51.2	-5.1	-4.1	-3.7	-4.3	-6.2	-0.5
NL	38.9	32.3	30.9	34.3	36.9	44.2	40.4	35.3	31.4	35.7	38.3	50.5	1.5	3.0	0.5	1.4	1.4	6.3
AT	23.3	33.3	54.7	64.6	58.1	24.8	24.1	35.7	54.4	65.9	51.7	35.5	0.8	2.4	-0.3	1.3	-6.4	10.7
PL	26.9	23.9	24.8	27.0	27.8	31.2	30.5	25.6	26.1	28.6	30.7	32.5	3.6	1.7	1.3	1.6	2.9	1.3
PT	27.1	23.1	23.3	28.7	38.3	37.3	28.3	24.4	22.8	29.3	33.8	44.4	1.2	1.3	-0.5	0.6	-4.5	7.1
SI	35.8	31.3	42.3	44.6	42.8	41.3	37.9	37.1	39.0	42.2	42.2	49.2	2.1	5.8	-3.3	-2.4	-0.6	7.9
SK	29.0	25.3	30.0	37.0	31.8	27.4	28.3	27.3	34.5	40.0	33.7	29.4	-0.7	2.0	4.5	3.0	1.9	2.0
FI	31.9	29.6	30.4	36.8	39.1	34.5	32.8	31.3	32.1	38.0	40.0	34.8	0.9	1.7	1.7	1.2	0.9	0.3
SE	32.0	26.3	25.9	30.5	30.5	32.9	33.1	27.8	26.4	30.7	33.0	32.1	1.1	1.5	0.5	0.2	2.5	-0.8
UK	39.0	36.0	29.0	36.0	40.0	42.0	40.0	36.0	30.0	36.0	37.0	47.0	1.0	0.0	1.0	0.0	-3.0	5.0
BG*	:	:	20.1	20.1	20.1	32.8	19.1	19.1	21.0	21.0	21.0	30.6	:	:	0.9	0.9	0.9	-2.2
RO	:	:	:	:	:	:	:	:	21.2	28.4	29.1	26.5	:	:	:	:	:	:
IS	21.0	14.4	15.4	25.2	26.1	30.6	22.4	16.2	:	:	:	:	1.4	1.8	:	:	:	:
LI	19.2	22.0	33.8	37.3	34.3	20.2	19.8	18.7	29.2	32.4	29.5	20.5	0.6	-3.3	-4.6	-4.9	-4.8	0.3
NO	32.0	26.5	29.3	38.7	36.8	33.2	32.8	27.1	30.4	37.5	38.5	33.0	0.8	0.6	1.1	-1.2	1.7	-0.2

* BG: Data based on quarterly figures

Figure 2: Level of net occupancy rates in hotels and similar establishments in the peak month



Data not available for FR, IE, IT, BG, RO and IS

➤ ESSENTIAL INFORMATION – METHODOLOGICAL NOTES

Data source: Eurostat, Tourism Statistics

CONCEPTS AND DEFINITIONS

Net occupancy rate

The net occupancy rate of bed places in one month is obtained by dividing total overnight stays by the product of the bed places on offer and the number of days when the bed places are actually available for use, multiplying the quotient by 100 to express the result as a percentage.

Hotels and similar establishments

Hotels, apartment hotels, motels, roadside inns, beach hotels and other similar establishments which provide hotel services including more than bed-making and cleaning of the room and sanitary facilities. Similar establishments are other similar types of accommodation which is let per room and has a limited number of hotel-type services, including bed-making and cleaning of rooms and sanitary facilities, on a daily basis.

Further information:



Recent releases on Tourism

Title	Panorama on Tourism (with CD-Rom) – 2006 edition (16 October 2006)
Catalogue No	KS-74-06-912-EN-C
Title	Statistics in Focus 20/2006 - Tourism and the Internet in the European Union
Catalogue No	KS-NP-06-020
Title	Statistics in Focus 19/2006 - Summer tourism trends in 2005
Catalogue No	KS-NP-06-019
Title	Statistics in Focus 18/2006 - How Europeans go on holiday
Catalogue No	KS-NP-06-018
Title	Tourism - Statistical pocketbook - Data 2001-2004
Catalogue No	KS-DS-05-001-EN-C

Upcoming releases :

Title	Statistics in Focus XX/2006 – Regional Tourism in the European Union
Title	Tourism – Statistical pocketbook - 2006 edition
Title	Panorama on Tourism – 2007 edition

Data: [EUROSTAT Website/Home page/Industry, trade and services/Data](#)

- [-]  **Industry, trade and services** (New codes (xls))
 - [+]  Industry, trade and services - horizontal view
 - [+]  Information society statistics
 - [+]  Industry and construction
 - [+]  Distributive trade
 - [+]  Services
 - [-]  **Tourism** 
 - [+]  Capacity of collective tourist accommodation : establishments, bedrooms and bedplaces 
 - [-]  Occupancy in collective accommodation establishments : domestic and inbound tourism 
 - [+]  Arrivals of residents and non-residents
 - [+]  Nights spent by residents and non-residents
 - [+]  Monthly use of bedplaces
 - [+]  Tourism demand : domestic and outbound tourism (excluding day-trips) 

Journalists can contact the media support service:

Bech Building Office A4/125
L - 2920 Luxembourg

Tel. (352) 4301 33408
Fax (352) 4301 35349

E-mail: eurostat-mediasupport@ec.europa.eu

European Statistical Data Support:

Eurostat set up with the members of the 'European statistical system' a network of support centres, which will exist in nearly all Member States as well as in some EFTA countries.

Their mission is to provide help and guidance to Internet users of European statistical data.

Contact details for this support network can be found on our Internet site: <http://ec.europa.eu/eurostat/>

A list of worldwide sales outlets is available at the:

Office for Official Publications of the European Communities.

2, rue Mercier

L - 2985 Luxembourg

URL: <http://publications.europa.eu>

E-mail: info-info-opoce@ec.europa.eu