

Harmonized Indices of Consumer Prices

November 2006

Euro area¹ annual inflation, as measured by the Monetary Union Index of Consumer Prices (MUICP), was 1.9% in November 2006², up from 1.6% in October. A year earlier the rate was 2.3%.

EU annual inflation, as measured by the European Index of Consumer Prices (EICP)³, rose from 1.8% in October to 2.1% in November 2006. A year earlier the rate was 2.3%.

EEA annual inflation, as measured by the European Economic Area Index of Consumer Prices (EEAICP), was 2.1% in November 2006.

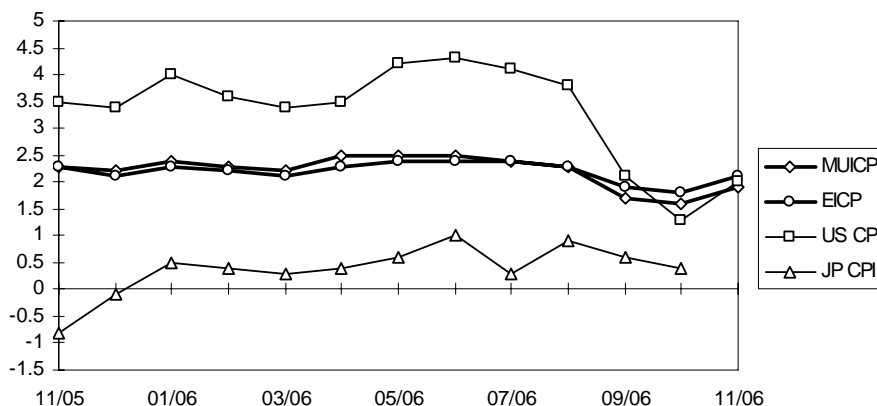
In November 2006, the highest annual inflation rates in EU Member States were recorded in **Hungary** (6.4%), **Latvia** (6.3%) and **Estonia** (4.7%), and the lowest rates were observed in **Malta** (0.9%), **Czech Republic** (1.0%) and **Cyprus, Poland and Finland** (1.3% each).

For the **USA**⁴ the annual inflation rate was 2.0% in November 2006, up from 1.3% in October. For **Japan**⁴ no November data was available in time for publication.

The annual inflation rates for the **euro area**, the **EU** and the latest available rates for the **USA** and **Japan** are shown in the graph below.

Methodological notes can be accessed via the Eurostat internet site under Special topics/HICP/Methodology – [Short guide for users](#) (issue date: 17/05/2004).

Annual Rate of Change (%)



1 The euro area comprises: Belgium, Germany, Greece, Spain, France, Ireland, Italy, Luxembourg, the Netherlands, Austria, Portugal and Finland.

2 November 2006 data for Portugal were under embargo at the time of publication. However, Portuguese data were used to compute euro area, EU and EEA totals.

In October 2006, Italy changed its price collection period. Collection is now taking place between the 1st and the 21st of the reference month. Until September 2006 the collection period was between the 16th of the previous month and the 15th of the reference month. Figures from October 2006 onwards may be subject to revision.

3 The EICP (EICP='European Index of Consumer Prices' as defined in Council Regulation (EC) No 2494/95 of 23 October 1995) is the official EU aggregate. It covers 15 Member States until April 2004 and 25 Member States starting from May 2004. The ten new Member States are integrated into the EICP starting from May 2004 using a chain index formula.

4 For the USA and Japan the national CPIs are given, which are not strictly comparable with the HICPs.

Statistics in focus

ECONOMY AND FINANCE

27/2006

Prices

Author

Christine WIRTZ

Contents

Price Indices.....	2
Rates of Change.....	4
EEA Index Numbers and Rates of Change.....	6
COICOP/HICP Main categories.....	7



TABLE I
HARMONIZED INDICES OF CONSUMER PRICES
INDEX NUMBERS 2005 = 100

	Euro area	EICP	BE	CZ	DK	DE	EE	EL	ES	FR	IE	IT	CY	LV
Annual Average Index														
2003	95.81	95.95	95.75	96.0	97.5	96.4	93.22	93.79	93.86	95.89	95.7	95.7	96.18	88.10
2004	97.86	97.88	97.53	98.4	98.3	98.1	96.05	96.63	96.73	98.14	97.9	97.8	98.00	93.55
2005	100.00	100.00	100.00	100.0	100.0	100.0	100.00	100.00	100.00	100.00	100.0	100.0	100.00	100.00
Monthly Index - 2004														
Jan	96.45	96.51	95.05	97.7	97.4	97.0	93.65	94.71	94.44	96.79	95.9	96.2	95.55	90.36
Feb	96.62	96.69	96.84	97.8	97.8	97.2	93.85	94.05	94.52	97.22	96.8	96.1	95.55	90.92
Mar	97.29	97.28	96.92	98.0	98.3	97.7	94.18	96.74	95.22	97.65	97.2	97.1	96.42	91.82
Apr	97.72	97.69	97.44	98.0	98.4	97.9	94.77	97.10	96.55	97.91	97.5	97.9	97.13	92.37
May	98.05	98.08	97.78	98.6	98.8	98.1	96.62	97.54	97.09	98.26	97.7	98.0	97.99	93.55
Jun	98.05	98.09	97.69	98.8	98.5	98.1	96.95	97.32	97.25	98.35	98.2	98.2	98.62	94.10
Jul	97.88	97.92	96.67	99.0	98.2	98.5	96.69	95.43	96.55	98.17	97.8	98.0	97.36	94.31
Aug	98.05	98.06	98.29	99.0	97.8	98.6	96.62	95.14	97.01	98.35	98.4	97.8	97.84	94.24
Sep	98.22	98.23	98.20	98.3	98.6	98.3	96.82	97.18	97.17	98.43	98.5	98.3	98.86	94.66
Oct	98.56	98.57	98.71	98.8	99.0	98.5	97.15	97.90	98.18	98.78	98.6	98.6	99.88	95.00
Nov	98.48	98.53	98.54	98.6	98.7	98.1	97.54	97.98	98.42	98.78	98.8	98.8	100.28	95.49
Dec	98.90	98.92	98.20	98.6	98.4	99.2	97.74	98.49	98.34	98.95	98.9	99.1	100.51	95.77
Monthly Index - 2005														
Jan	98.31	98.42	96.92	99.2	98.2	98.6	97.54	98.70	97.40	98.35	97.9	98.1	98.23	96.39
Feb	98.65	98.73	99.06	99.2	98.8	99.0	98.14	97.03	97.64	99.04	98.8	98.0	97.84	97.29
Mar	99.32	99.32	99.65	99.1	99.6	99.3	98.73	99.50	98.49	99.73	99.0	99.2	98.70	97.85
Apr	99.75	99.73	99.82	99.4	100.1	99.3	99.19	100.30	99.90	99.91	99.6	100.0	99.80	98.89
May	100.00	100.00	99.99	99.5	100.0	99.7	99.39	100.67	100.05	99.91	99.8	100.3	100.04	99.65
Jun	100.08	100.08	100.33	100.1	100.2	99.9	100.05	100.45	100.36	100.08	100.1	100.3	100.12	100.27
Jul	100.00	100.02	99.31	100.4	100.0	100.3	100.45	99.14	99.74	99.91	100.0	100.1	98.62	100.27
Aug	100.25	100.26	101.10	100.4	100.1	100.5	100.71	98.56	100.21	100.34	100.5	99.9	99.33	100.13
Sep	100.76	100.71	101.10	100.3	100.9	100.8	101.57	100.88	100.83	100.77	101.2	100.5	100.98	101.66
Oct	101.02	100.95	100.93	101.2	100.9	100.8	101.50	101.54	101.61	100.77	101.2	101.2	102.09	102.35
Nov	100.76	100.75	100.85	100.8	100.5	100.3	101.43	101.32	101.77	100.51	101.0	101.2	102.32	102.70
Dec	101.10	101.03	100.93	100.5	100.6	101.3	101.30	101.90	102.00	100.69	100.8	101.2	101.93	102.56
Monthly Index - 2006														
Jan	100.66	100.64	99.60	101.6	100.2	100.7	102.08	101.67	101.53	100.60	100.3	100.3	100.22	103.67
Feb	100.95	100.93	101.88	101.6	100.9	101.1	102.60	100.07	101.60	100.99	101.5	100.2	100.13	104.09
Mar	101.53	101.41	101.81	101.5	101.4	101.2	102.71	102.82	102.32	101.44	101.8	101.4	101.31	104.29
Apr	102.20	102.07	102.38	101.7	101.9	101.6	103.44	103.84	103.80	101.89	102.3	102.3	102.34	104.96
May	102.48	102.42	102.74	102.3	102.1	101.8	104.00	103.96	104.17	102.32	102.8	102.6	102.54	106.69
Jun	102.56	102.53	102.82	102.4	102.3	101.9	104.48	103.90	104.33	102.32	103.0	102.7	102.75	106.58
Jul	102.43	102.43	101.72	102.8	102.0	102.4	104.94	103.02	103.76	102.13	102.9	102.4	101.42	107.22
Aug	102.52	102.60	103.47	103.0	102.0	102.3	105.70	101.96	103.99	102.46	103.7	102.2	102.04	106.96
Sep	102.52	102.65	102.98	102.5	102.4	101.8	105.45	104.05	103.79	102.26	103.4	102.9	103.25	107.67
Oct	102.60	102.74	102.68	102.0	102.3	101.9	105.34	104.73	104.22	102.02	103.4	103.1	103.81	108.09
Nov	102.64p	102.82p	102.90	101.8	102.3	101.8	106.15	104.57	104.47	102.14	103.4	103.2	103.70	109.15
Dec														

p provisional

TABLE I
HARMONIZED INDICES OF CONSUMER PRICES
2005 = 100 INDEX NUMBERS

LT	LU	HU	MT	NL	AT	PL	PT	SI	SK	FI	SE	UK	BG	RO	
Annual Average Index															
96.29	93.36	90.50	94.95	97.18	96.06	94.5	95.52	94.16	90.52	99.10	98.18	96.7	89.69	81.94	2003
97.41	96.37	96.63	97.53	98.52	97.94	97.9	97.92	97.60	97.28	99.24	99.18	98.0	95.20	91.68	2004
100.00	100.00	100.00	100.00	100.00	100.00	100.0	100.00	100.00	100.00	100.00	100.00	100.0	100.00	100.00	2005
Monthly Index - 2004															
95.77	94.02	94.41	94.26	97.33	96.80	95.8	96.40	95.58	96.09	99.01	98.36	97.0	94.79	88.42	Jan
95.61	95.24	95.47	94.33	97.89	97.23	95.9	96.24	95.75	96.73	99.45	98.18	97.2	95.12	88.98	Feb
96.09	95.32	95.97	94.72	98.69	97.58	96.2	96.48	96.32	96.95	99.01	99.06	97.4	95.05	89.42	Mar
96.41	95.81	96.25	98.70	99.01	97.49	96.9	97.42	96.94	96.95	99.01	99.32	97.8	95.32	89.94	Apr
97.93	96.29	97.12	98.86	99.18	97.84	98.0	98.20	97.79	97.27	99.19	99.67	98.1	95.35	90.20	May
98.01	96.70	97.17	99.17	98.45	98.02	98.6	99.37	98.24	97.48	99.10	99.15	98.1	93.66	90.73	Jun
97.93	95.89	97.17	99.64	98.13	97.75	98.5	98.51	98.75	97.65	98.84	98.97	97.8	94.80	91.89	Jul
97.61	96.94	96.85	99.17	98.29	98.10	98.2	98.12	98.47	97.54	99.10	98.88	98.1	94.38	92.39	Aug
98.17	97.10	96.94	99.64	99.10	98.02	98.5	98.04	98.07	97.65	99.53	99.67	98.2	95.27	93.26	Sep
98.33	97.59	97.40	99.64	99.26	98.54	99.1	98.51	98.18	97.81	99.88	100.11	98.4	95.43	94.40	Oct
98.57	97.92	97.45	95.66	98.85	98.71	99.4	98.82	98.75	97.70	99.36	99.41	98.6	96.02	95.02	Nov
98.49	97.67	97.40	96.60	98.05	99.15	99.4	98.90	98.30	97.54	99.36	99.41	99.1	97.23	95.56	Dec
Monthly Index - 2005															
98.49	96.70	98.14	96.05	98.53	99.15	99.4	98.35	97.79	99.20	98.84	98.88	98.6	97.95	96.33	Jan
98.65	98.32	98.69	96.67	99.34	99.50	99.4	98.27	98.47	99.31	99.45	99.32	98.8	98.80	96.92	Feb
99.21	98.65	99.15	97.14	100.14	99.93	99.5	98.67	99.48	99.31	99.88	99.58	99.3	99.12	97.21	Mar
99.53	99.38	99.88	100.65	100.30	99.76	99.9	99.37	99.54	99.53	100.15	99.76	99.7	100.18	98.97	Apr
99.77	99.86	100.48	101.27	100.22	99.76	100.1	99.92	99.88	99.63	99.80	99.85	100.0	99.70	99.26	May
99.93	99.78	100.76	101.27	99.90	100.02	100.0	99.99	99.93	100.01	100.06	99.93	100.0	98.41	99.56	Jun
99.77	99.70	100.67	101.35	99.58	99.76	100.0	100.38	100.72	99.69	99.71	99.67	100.1	98.50	100.53	Jul
99.85	101.08	100.21	101.66	99.90	99.93	100.0	100.54	100.22	99.63	100.06	99.93	100.4	99.07	100.64	Aug
100.65	101.65	100.39	101.66	100.78	100.55	100.4	100.70	101.18	99.90	100.67	100.72	100.6	100.46	101.23	Sep
101.30	102.46	100.44	102.60	100.78	100.55	100.7	101.09	101.35	101.24	100.67	100.98	100.7	101.65	102.10	Oct
101.38	101.41	100.62	99.79	100.46	100.37	100.5	101.32	100.78	101.24	100.32	100.63	100.7	102.65	103.33	Nov
101.46	101.00	100.58	99.87	100.06	100.72	100.2	101.40	100.67	101.30	100.41	100.72	101.0	103.50	103.90	Dec
Monthly Index - 2006															
101.98	100.63	100.55	98.31	100.28	100.66	100.3	101.01	100.32	103.23	100.00	100.01	100.5	104.33	104.96	Jan
102.03	102.13	100.92	98.93	100.78	100.99	100.3	101.21	100.70	103.56	100.77	100.37	100.9	107.48	105.21	Feb
102.24	102.31	101.51	100.00	101.58	101.26	100.4	102.42	101.43	103.57	101.08r	101.03	101.1	107.78	105.43	Mar
102.94	102.81	102.27	104.16	102.06	101.84	101.1	103.01	102.34	103.90	101.61	101.58	101.7	108.26	105.88	Apr
103.39	103.43	103.37	104.83	102.02	101.86	101.6	103.57	103.27	104.41	101.52	101.78	102.2	108.22	106.52	May
103.66	103.70	103.66	104.57	101.68	101.88	101.5	103.52	102.96	104.55	101.54	101.78	102.5	106.52	106.69	Jun
104.18	103.08	103.85	104.96	101.32	101.72	101.4	103.38	102.66	104.68	101.07	101.44	102.5	106.03	106.81	Jul
104.12	104.23	104.91	104.66	101.81	102.03	101.7	103.29	103.35	104.57	101.37	101.48	102.9	105.79	106.74	Aug
103.98	103.65	106.33	104.86	102.30	101.89	101.8	103.71	103.68	104.36	101.47	101.97	103.0	106.11	106.80	Sep
105.02	103.08	106.81	104.30	102.12	101.82r	101.8	103.73	102.91	104.38	101.62	102.17	103.2	107.44	107.02	Oct
105.84	103.19	107.04	100.71	102.10p	101.94p	101.8	:	103.23	104.94	101.62	102.18	103.4	108.96	108.19	Nov
															Dec

p provisional r revised : not available

TABLE II
HARMONIZED INDICES OF CONSUMER PRICES
 RATES OF CHANGE (%)

	Euro area	EICP	BE	CZ	DK	DE	EE	EL	ES	FR	IE	IT	CY	LV
Annual Average Rate of Change														
2003/12	2.1	2.0	1.5	-0.1	2.0	1.0	1.4	3.4	3.1	2.2	4.0	2.8	4.0	2.9
2004/12	2.1	2.0	1.9	2.6	0.9	1.8	3.0	3.0	3.1	2.3	2.3	2.3	1.9	6.2
2005/12	2.2	2.2	2.5	1.6	1.7	1.9	4.1	3.5	3.4	1.9	2.2	2.2	2.0	6.9
2006/11	2.2p	2.2p	2.4	2.1	1.9	1.8	4.3	3.3	3.6	1.9	2.6	2.2	2.2	6.6
Annual Rate of Change - 2004														
Jan	1.9	1.8	1.4	2.0	0.9	1.1	0.6	3.1	2.3	2.2	2.2	2.1	1.6	4.0
Feb	1.6	1.5	1.2	2.0	0.6	0.8	0.6	2.6	2.2	1.9	2.2	2.5	1.4	4.3
Mar	1.7	1.5	1.0	2.2	0.4	1.1	0.7	2.9	2.2	1.9	1.9	2.3	0.1	4.7
Apr	2.0	1.8	1.7	2.0	0.5	1.7	1.5	3.1	2.7	2.4	1.7	2.3	0.1	5.0
May	2.5	2.3	2.4	2.6	1.1	2.1	3.7	3.1	3.4	2.8	2.1	2.3	1.2	6.1
Jun	2.4	2.3	2.0	2.7	0.8	2.0	4.4	3.0	3.5	2.7	2.5	2.4	2.4	6.1
Jul	2.3	2.2	2.1	3.0	1.1	2.1	4.0	3.1	3.3	2.6	2.5	2.3	2.9	6.7
Aug	2.3	2.1	2.0	3.1	0.8	2.1	3.9	2.8	3.3	2.5	2.5	2.4	2.8	7.8
Sep	2.1	2.0	1.8	2.8	0.9	2.0	3.8	2.9	3.2	2.2	2.4	2.2	1.8	7.7
Oct	2.4	2.2	2.7	3.1	1.5	2.3	4.0	3.3	3.6	2.3	2.5	2.1	2.0	7.2
Nov	2.2	2.1	2.3	2.6	1.0	2.0	4.4	3.2	3.5	2.2	2.7	2.1	2.6	7.2
Dec	2.4	2.2	1.9	2.5	0.9	2.3	4.8	3.1	3.3	2.3	2.4	2.4	3.9	7.4
Annual Rate of Change - 2005														
Jan	1.9	2.0	2.0	1.5	0.8	1.6	4.2	4.2	3.1	1.6	2.1	2.0	2.8	6.7
Feb	2.1	2.1	2.3	1.4	1.0	1.9	4.6	3.2	3.3	1.9	2.1	2.0	2.4	7.0
Mar	2.1	2.1	2.8	1.1	1.3	1.6	4.8	2.9	3.4	2.1	1.9	2.2	2.4	6.6
Apr	2.1	2.1	2.4	1.4	1.7	1.4	4.7	3.3	3.5	2.0	2.2	2.1	2.7	7.1
May	2.0	2.0	2.3	0.9	1.2	1.6	2.9	3.2	3.0	1.7	2.1	2.3	2.1	6.5
Jun	2.1	2.0	2.7	1.3	1.7	1.8	3.2	3.2	3.2	1.8	1.9	2.1	1.5	6.6
Jul	2.2	2.1	2.7	1.4	1.8	1.8	3.9	3.9	3.3	1.8	2.2	2.1	1.3	6.3
Aug	2.2	2.2	2.9	1.4	2.4	1.9	4.2	3.6	3.3	2.0	2.1	2.1	1.5	6.3
Sep	2.6	2.5	3.0	2.0	2.3	2.5	4.9	3.8	3.8	2.4	2.7	2.2	2.1	7.4
Oct	2.5	2.4	2.2	2.4	1.9	2.3	4.5	3.7	3.5	2.0	2.6	2.6	2.2	7.7
Nov	2.3	2.3	2.3	2.2	1.8	2.2	4.0	3.4	3.4	1.8	2.2	2.4	2.0	7.6
Dec	2.2	2.1	2.8	1.9	2.2	2.1	3.6	3.5	3.7	1.8	1.9	2.1	1.4	7.1
Annual Rate of Change - 2006														
Jan	2.4	2.3	2.8	2.4	2.0	2.1	4.7	3.0	4.2	2.3	2.5	2.2	2.0	7.6
Feb	2.3	2.2	2.8	2.4	2.1	2.1	4.5	3.1	4.1	2.0	2.7	2.2	2.3	7.0
Mar	2.2	2.1	2.2	2.4	1.8	1.9	4.0	3.3	3.9	1.7	2.8	2.2	2.6	6.6
Apr	2.5	2.3	2.6	2.3	1.8	2.3	4.3	3.5	3.9	2.0	2.7	2.3	2.5	6.1
May	2.5	2.4	2.8	2.8	2.1	2.1	4.6	3.3	4.1	2.4	3.0	2.3	2.5	7.1
Jun	2.5	2.4	2.5	2.3	2.1	2.0	4.4	3.4	4.0	2.2	2.9	2.4	2.6	6.3
Jul	2.4	2.4	2.4	2.4	2.0	2.1	4.5	3.9	4.0	2.2	2.9	2.3	2.8	6.9
Aug	2.3	2.3	2.3	2.6	1.9	1.8	5.0	3.4	3.8	2.1	3.2	2.3	2.7	6.8
Sep	1.7	1.9	1.9	2.2	1.5	1.0	3.8	3.1	2.9	1.5	2.2	2.4	2.2	5.9
Oct	1.6	1.8	1.7	0.8	1.4	1.1	3.8	3.1	2.6	1.2	2.2	1.9	1.7	5.6
Nov	1.9p	2.1p	2.0	1.0	1.8	1.5	4.7	3.2	2.7	1.6	2.4	2.0	1.3	6.3
Dec														

p provisional

TABLE II
HARMONIZED INDICES OF CONSUMER PRICES
RATES OF CHANGE (%)

LT	LU	HU	MT	NL	AT	PL	PT	SI	SK	FI	SE	UK	BG	RO	
Annual Average Rate of Change															
-1.1	2.5	4.7	1.9	2.2	1.3	0.7	3.3	5.7	8.4	1.3	2.3	1.4	2.3	15.3	2003/12
1.2	3.2	6.8	2.7	1.4	2.0	3.6	2.5	3.7	7.5	0.1	1.0	1.3	6.1	11.9	2004/12
2.7	3.8	3.5	2.5	1.5	2.1	2.2	2.1	2.5	2.8	0.8	0.8	2.1	5.0	9.1	2005/12
3.7	3.1	3.8	2.8	1.7p	1.7p	1.2	:	2.5	4.3	1.3	1.5	2.2	7.3	6.9	2006/11
Annual Rate of Change - 2004															
-1.2	2.3	6.7	2.8	1.5	1.2	1.8	2.2	4.0	8.3	0.8	1.3	1.4	6.4	13.9	Jan
-1.2	2.5	7.0	2.5	1.3	1.5	1.8	2.1	3.6	8.4	0.4	0.1	1.3	6.6	13.7	Feb
-0.9	2.0	6.6	2.1	1.2	1.5	1.8	2.2	3.5	8.0	-0.4	0.4	1.1	6.1	13.1	Mar
-0.7	2.7	7.0	3.6	1.5	1.5	2.3	2.4	3.6	7.9	-0.4	1.0	1.1	6.1	12.5	Apr
1.1	3.4	7.8	3.1	1.7	2.1	3.5	2.5	3.9	8.2	-0.1	1.5	1.5	6.8	12.3	May
1.1	3.8	7.5	3.2	1.5	2.3	4.2	3.7	3.9	8.2	-0.1	1.2	1.6	7.3	12.0	Jun
1.7	3.8	7.2	3.1	1.2	2.1	4.7	2.9	3.7	8.4	0.2	1.2	1.4	7.6	12.1	Jul
2.2	3.6	7.2	2.5	1.2	2.2	4.8	2.4	3.7	7.1	0.3	1.1	1.3	6.3	12.4	Aug
3.1	3.1	6.7	3.2	1.2	1.8	4.6	2.1	3.4	6.6	0.2	1.1	1.1	6.3	11.1	Sep
3.1	4.1	6.4	2.7	1.5	2.4	4.6	2.4	3.4	6.6	0.6	1.5	1.2	5.8	10.8	Oct
2.9	4.0	5.8	1.9	1.5	2.3	4.5	2.6	3.8	6.3	0.2	1.1	1.5	4.5	9.9	Nov
2.8	3.5	5.5	1.9	1.2	2.5	4.4	2.6	3.3	5.8	0.1	0.9	1.7	4.0	9.3	Dec
Annual Rate of Change - 2005															
2.8	2.9	4.0	1.9	1.2	2.4	3.8	2.0	2.3	3.2	-0.2	0.5	1.6	3.3	8.9	Jan
3.2	3.2	3.4	2.5	1.5	2.3	3.6	2.1	2.8	2.7	0.0	1.2	1.7	3.9	8.9	Feb
3.2	3.5	3.3	2.6	1.5	2.4	3.4	2.3	3.3	2.4	0.9	0.5	1.9	4.3	8.7	Mar
3.2	3.7	3.8	2.0	1.3	2.3	3.1	2.0	2.7	2.7	1.2	0.4	1.9	5.1	10.0	Apr
1.9	3.7	3.5	2.4	1.0	2.0	2.1	1.8	2.1	2.4	0.6	0.2	1.9	4.6	10.0	May
2.0	3.2	3.7	2.1	1.5	2.0	1.4	0.6	1.7	2.6	1.0	0.8	2.0	5.1	9.7	Jun
1.9	4.0	3.6	1.7	1.5	2.1	1.5	1.9	2.0	2.1	0.9	0.7	2.3	3.9	9.4	Jul
2.3	4.3	3.5	2.5	1.6	1.9	1.8	2.5	1.8	2.1	1.0	1.1	2.4	5.0	8.9	Aug
2.5	4.7	3.6	2.0	1.7	2.6	1.9	2.7	3.2	2.3	1.1	1.1	2.5	5.4	8.5	Sep
3.0	5.0	3.1	3.0	1.5	2.0	1.6	2.6	3.2	3.5	0.8	0.9	2.3	6.5	8.2	Oct
2.9	3.6	3.3	4.3	1.6	1.7	1.1	2.5	2.1	3.6	1.0	1.2	2.1	6.9	8.7	Nov
3.0	3.4	3.3	3.4	2.0	1.6	0.8	2.5	2.4	3.9	1.1	1.3	1.9	6.4	8.7	Dec
Annual Rate of Change - 2006															
3.5	4.1	2.5	2.4	1.8	1.5	0.9	2.7	2.6	4.1	1.2	1.1	1.9	6.5	9.0	Jan
3.4	3.9	2.3	2.3	1.4	1.5	0.9	3.0	2.3	4.3	1.3	1.1	2.0	8.8	8.6	Feb
3.1	3.7	2.4	2.9	1.4	1.3	0.9	3.8	2.0	4.3	1.2	1.5	1.8	8.7	8.5	Mar
3.4	3.5	2.4	3.5	1.8	2.1	1.2	3.7	2.8	4.4	1.5	1.8	2.0	8.1	7.0	Apr
3.6	3.6	2.9	3.5	1.8	2.1	1.5	3.7	3.4	4.8	1.7	1.9	2.2	8.5	7.3	May
3.7	3.9	2.9	3.3	1.8	1.9	1.5	3.5	3.0	4.5	1.5	1.9	2.5	8.2	7.2	Jun
4.4	3.4	3.2	3.6	1.7	2.0	1.4	3.0	1.9	5.0	1.4	1.8	2.4	7.6	6.2	Jul
4.3	3.1	4.7	3.0	1.9	2.1	1.7	2.7	3.1	5.0	1.3	1.6	2.5	6.8	6.1	Aug
3.3	2.0	5.9	3.1	1.5	1.3	1.4	3.0	2.5	4.5	0.8	1.2	2.4	5.6	5.5	Sep
3.7	0.6	6.3	1.7	1.3	1.3r	1.1	2.6	1.5	3.1	0.9	1.2	2.4	5.7	4.8	Oct
4.4	1.8	6.4	0.9	1.6p	1.6p	1.3	:	2.4	3.7	1.3	1.5	2.7	6.1	4.7	Nov
															Dec

p provisional r revised : not available

TABLE III
HARMONIZED INDICES OF CONSUMER
PRICES
INDEX NUMBERS 2005 = 100

	EEA	IS	NO	CH**
Annual Average Index				
2003	95.97	96.41	97.9	98.0
2004	97.89	98.64	98.5	98.8
2005	100.00	100.00	100.0	100.0
Monthly Index - 2004				
Jan	96.52	97.17	97.7	97.9
Feb	96.71	96.79	97.9	97.9
Mar	97.29	97.56	98.4	98.1
Apr	97.69	97.94	98.6	99.0
May	98.08	98.63	98.7	99.2
Jun	98.10	99.17	98.7	99.4
Jul	97.92	98.86	98.6	98.3
Aug	98.06	98.79	98.3	98.7
Sep	98.23	99.17	98.7	98.7
Oct	98.57	99.71	99.0	99.6
Nov	98.54	99.79	99.0	99.7
Dec	98.92	100.10	98.8	99.6
Monthly Index - 2005				
Jan	98.42	99.71	98.7	99.1
Feb	98.73	99.56	98.7	99.3
Mar	99.32	99.94	99.2	99.6
Apr	99.73	99.48	99.7	100.4
May	100.00	99.17	100.1	100.3
Jun	100.08	99.56	100.3	100.0
Jul	100.02	99.40	99.9	99.5
Aug	100.26	99.17	100.1	99.6
Sep	100.71	100.79	100.8	100.1
Oct	100.95	101.25	100.8	100.9
Nov	100.75	100.87	100.8	100.7
Dec	101.03	101.10	100.8	100.6
Monthly Index - 2006				
Jan	100.64	101.01	100.5	100.4
Feb	100.93	100.78	101.4	100.7
Mar	101.42	101.93	101.6	100.6
Apr	102.08	102.72	102.5	101.4
May	102.43	103.92	102.6	101.6
Jun	102.53	105.27	102.4	101.6
Jul	102.43	105.71	102.2	100.9
Aug	102.60	106.17	102.2	101.1
Sep	102.66	106.95	103.8	100.9
Oct	102.75	107.14	103.8	101.2
Nov	102.83p	107.06	103.6	101.2
Dec				

TABLE IV
HARMONIZED INDICES OF CONSUMER
PRICES
RATES OF CHANGE (%)

	EEA	IS	NO	CH**	
Annual Average Rate of Change					
2.0	1.4	2.0	0.6	2003/12	
2.0	2.3	0.6	0.8	2004/12	
2.2	1.4	1.5	1.2	2005/12	
2.2p	4.2	2.5	1.1	2006/11	
Annual Rate of Change - 2004					
1.7	1.5	-1.5	0.2	Jan	
1.5	1.4	-1.5	0.1	Feb	
1.5	1.0	-0.4	-0.1	Mar	
1.8	1.5	0.5	0.6	Apr	
2.3	2.3	1.1	0.9	May	
2.3	2.8	1.3	1.1	Jun	
2.2	2.7	1.6	0.8	Jul	
2.1	3.1	1.1	1.0	Aug	
2.0	2.7	1.1	0.8	Sep	
2.2	2.9	1.4	1.3	Oct	
2.1	2.9	1.4	1.5	Nov	
2.2	2.9	1.2	1.4	Dec	
Annual Rate of Change - 2005					
2.0	2.6	1.0	1.2	Jan	
2.1	2.9	0.8	1.4	Feb	
2.1	2.4	0.8	1.5	Mar	
2.1	1.6	1.1	1.4	Apr	
2.0	0.5	1.4	1.1	May	
2.0	0.4	1.6	0.6	Jun	
2.1	0.5	1.3	1.2	Jul	
2.2	0.4	1.8	0.9	Aug	
2.5	1.6	2.1	1.4	Sep	
2.4	1.5	1.8	1.3	Oct	
2.2	1.1	1.8	1.0	Nov	
2.1	1.0	2.0	1.0	Dec	
Annual Rate of Change - 2006					
2.3	1.3	1.8	1.3	Jan	
2.2	1.2	2.7	1.4	Feb	
2.1	2.0	2.4	1.0	Mar	
2.4	3.3	2.8	1.1	Apr	
2.4	4.8	2.5	1.4	May	
2.4	5.7	2.1	1.6	Jun	
2.4	6.3	2.3	1.4	Jul	
2.3	7.1	2.1	1.5	Aug	
1.9	6.1	3.0	0.8	Sep	
1.8	5.8	3.0	0.3	Oct	
2.1p	6.1	2.8	0.5	Nov	
				Dec	

p provisional ** national CPI

TABLE V

MAIN CATEGORIES OF HARMONIZED INDICES OF CONSUMER PRICES

November 2006 / November 2005

ANNUAL RATES OF CHANGE (%)

	00.	01.	02.	03.	04.	05.	06.	07.	08.	09.	10.	11.	12.
Euro area	1.9p	3.1p	3.0p	0.9p	3.6p	1.1p	1.7p	0.8p	-2.7p	-0.1p	3.5p	2.8p	2.3p
EICP	2.1p	3.4p	2.9p	-0.1p	4.8p	0.7p	1.9p	0.6p	-2.0p	-0.3p	6.0p	3.0p	2.6p
BE	2.0	4.9	1.1	0.5	4.1	1.3	1.5	-0.1	-2.1	-0.3	2.4	2.3	2.7
CZ	1.0	0.3	1.7	-5.6	4.5	-1.1	5.7	-2.8	2.0	-0.7	2.2	5.3	2.2
DK	1.8	4.7	1.3	-1.8	2.6	0.7	1.3	1.1	-0.5	0.6	5.0	2.8	1.2
DE	1.5	2.9	3.9	0.1	2.8	0.3	0.9	0.8	-2.2	0.1	3.4	1.9	1.0
EE	4.7	6.1	4.1	3.2	14.9	2.8	3.8	-0.4	-5.5	3.7	5.7	4.6	4.0
EL	3.2	3.6	10.7	3.2	2.4	2.2	2.6	2.1	0.4	3.5	3.8	2.7	3.3
ES	2.7	4.0	1.0	1.3	4.8	2.7	1.5	0.5	-1.5	-0.6	4.4	4.4	4.1
FR	1.6	2.4	0.6	0.7	3.6	0.7	4.2	0.8	-2.8	-1.7	3.6	2.5	2.9
IE	2.4	1.7	0.8	-2.0	6.5	-1.6	4.4	0.1	-0.3	2.4	4.9	4.1	3.0
IT	2.0	2.9	5.0	1.4	4.6	1.6	-0.7	1.3	-4.1	1.3	2.5	2.5	2.8
CY	1.3	5.3	1.0	-2.0	1.6	0.2	3.7	-2.3	-2.3	1.4	5.7	0.6	3.2
LV	6.3	9.2	7.9	0.2	13.8	3.3	6.2	0.3	-4.6	2.1	11.2	9.5	7.3
LT	4.4	7.9	1.1	-3.4	10.7	1.1	6.3	2.1	0.1	0.6	0.2	4.2	5.3
LU	1.8	2.8	3.3	0.5	3.2	1.9	3.0	-0.1	-2.2	1.3	2.4	2.7	2.6
HU	6.4	13.5	7.6	1.0	13.2	-0.1	3.8	1.7	-4.7	2.2	8.3	7.8	3.3
MT	0.9	3.9	0.4	-6.2	4.1	1.3	3.2	-2.8	0.4	0.2	2.7	1.6	2.5
NL	1.6p	2.1p	1.4p	1.2p	4.9p	0.4p	3.9p	0.3p	-5.3p	0.6p	1.2p	2.5p	0.5p
AT	1.6p	2.5p	1.0p	-0.2p	5.0p	0.7p	0.4p	0.5p	-1.4p	-0.7p	7.9p	1.5p	2.5p
PL	1.3	2.1	1.5	-7.2	4.5	0.2	0.9	-2.6	0.5	-2.2	1.0	2.4	4.5
PT	:	:	:	:	:	:	:	:	:	:	:	:	:
SI	2.4	3.8	4.7	0.9	1.8	3.8	-0.5	0.7	0.6	1.4	1.1	3.9	4.9
SK	3.7	3.3	5.9	-0.2	9.2	0.3	10.6	-2.9	-4.7	2.0	3.6	2.7	3.9
FI	1.3	3.0	1.0	-1.1	2.5	0.5	0.1	0.0	1.2	0.2	1.6	2.2	2.9
SE	1.5	2.1	1.3	0.7	5.8	-1.9	1.0	-0.7	-5.5	0.1	3.6	2.6	2.5
UK	2.7	5.0	2.7	-3.2	11.1	-0.5	3.1	0.8	0.7	-0.7	14.0	3.2	3.5
EEA	2.1p	3.4p	2.9p	-0.2p	4.9p	0.7p	1.9p	0.6p	-2.0p	-0.2p	6.0p	3.0p	2.6p
IS	6.1	9.7	4.1	3.2	6.7	6.3	3.3	6.4	3.4	4.9	6.5	8.9	3.6
NO	2.8	2.2	2.4	-4.1	10.6	-1.3	3.4	2.3	2.1	0.9	2.4	3.9	-0.8
BG	6.1	4.3	58.0	4.6	2.9	3.0	1.9	2.0	-0.5	1.5	6.2	6.8	6.2
RO	4.7	0.9	22.8	3.6	12.2	2.0	0.6	1.2	-1.7	3.3	6.8	5.7	3.8

p provisional : not available

COICOP/HICP Code

- | | | | |
|------------|---|------------|----------------------------------|
| 00. | HICP (all-items index) | 06. | Health |
| 01. | Food and non-alcoholic beverages | 07. | Transports |
| 02. | Alcoholic beverages and tobacco | 08. | Communications |
| 03. | Clothing and footwear | 09. | Recreation and culture |
| 04. | Housing, water, electricity, gas and other fuels | 10. | Education |
| 05. | Furnishings, household equipment and routine maintenance of the house | 11. | Restaurants and hotels |
| | | 12. | Miscellaneous goods and services |

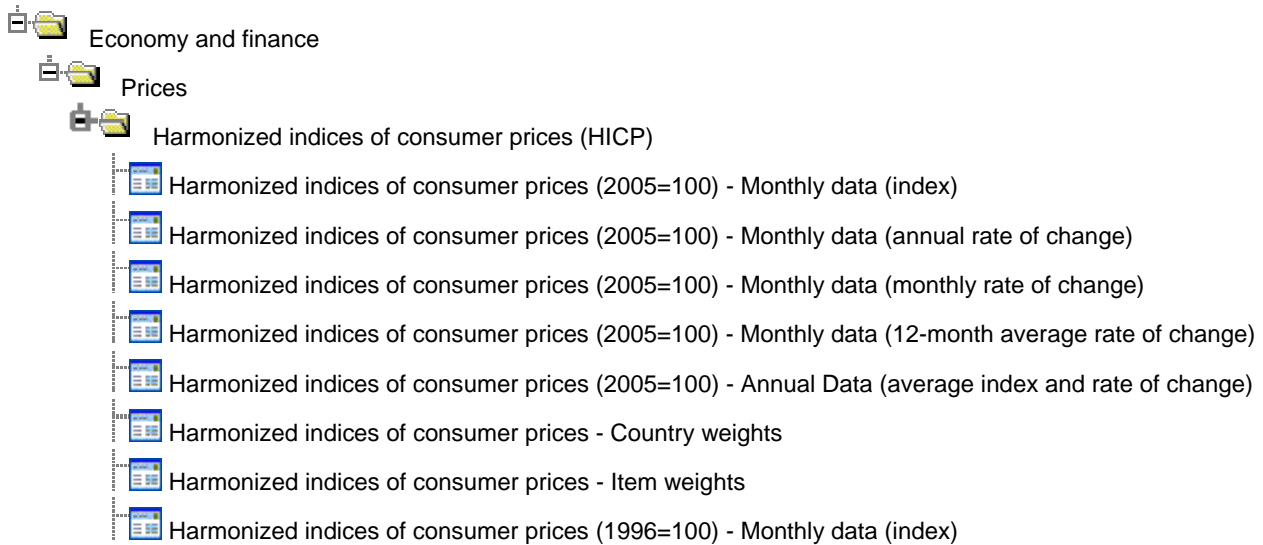
Further information:

Dedicated HICP section on the Eurostat website:

http://epp.eurostat.ec.europa.eu/pls/portal/url/page/PGP_DS_HICP

Data:

Eurostat website / Economy and finance / Data



Journalists can contact the media support service:

Bech Building Office A4/125
L - 2920 Luxembourg

Tel. (352) 4301 33408
Fax (352) 4301 35349

E-mail: eurostat-mediasupport@ec.europa.eu

European Statistical Data Support:

Eurostat set up with the members of the 'European statistical system' a network of support centres, which will exist in nearly all Member States as well as in some EFTA countries.

Their mission is to provide help and guidance to Internet users of European statistical data.

Contact details for this support network can be found on our Internet site: <http://ec.europa.eu/eurostat/>

A list of worldwide sales outlets is available at the:

Office for Official Publications of the European Communities.

2, rue Mercier
L - 2985 Luxembourg

URL: <http://publications.europa.eu>
E-mail: info-info-opoce@ec.europa.eu
