

Harmonisierte Verbraucherpreisindizes

November 2006

Statistik

kurz gefasst

WIRTSCHAFT UND
FINANZEN

27/2006

Preise

Autor

Christine WIRTZ

Inhalt

Indexpzahlen.....2

Veränderungsraten.....4

EWR Indexpzahlen und
Veränderungsraten.....6

COICOP/HVPI Hauptgruppen...7

Die jährliche Inflationsrate der **Eurozone**¹, gemessen anhand des Verbraucherpreisindex der Europäischen Währungsunion (VPI-EWU), lag im November 2006² bei 1,9%, gegenüber 1,6% im Oktober 2006. Ein Jahr zuvor hatte sie 2,3% betragen.

Die jährliche Inflationsrate der **EU**, gemessen anhand des Europäischen Verbraucherpreisindex (EVPI)³ lag im November 2006 bei 2,1%, gegenüber 1,8% im Oktober. Ein Jahr zuvor hatte sie bei 2,3% gelegen.

Die jährliche Inflationsrate des **EWR**, gemessen anhand des Verbraucherpreisindex des Europäischen Wirtschaftsraums (EWRVPI), lag im November 2006 bei 2,1%.

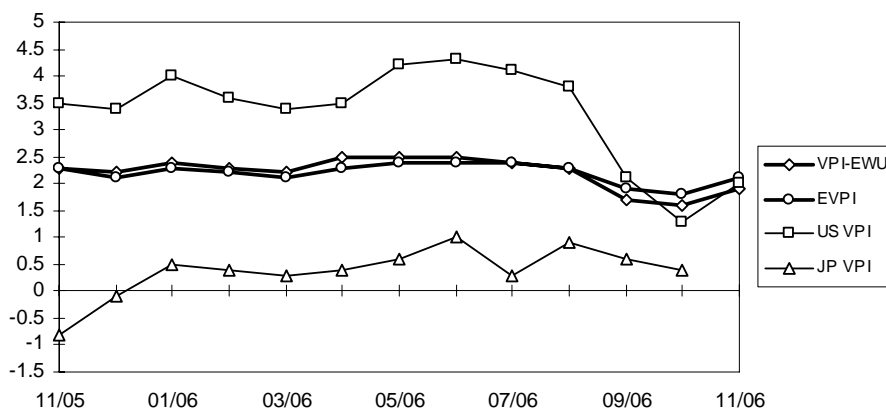
Die EU-Mitgliedstaaten mit den höchsten Inflationsraten im November 2006 waren **Ungarn** (6,4%), **Lettland** (6,3%) sowie **Estland** (4,7%), und die mit den niedrigsten Raten waren **Malta** (0,9%), die **Tschechische Republik** (1,0%) sowie **Zypern, Polen** und **Finnland** (je 1,3%).

Die jährliche Inflationsrate in den **USA**⁴ ist von 1,3% im Oktober 2006 auf 2,0% im November gestiegen. Für **Japan**⁴ lagen zum Zeitpunkt der Veröffentlichung keine Daten für November vor.

Die folgende Graphik zeigt die jährlichen Inflationsraten für die **Eurozone**, die **EU** sowie die letzten verfügbaren Raten für die **USA** und für **Japan**.

Methodologische Anmerkungen sind über die Eurostat-Internetadresse unter Spezielle Bereiche/HVPI/Methodologie – [Ein kurzer Leitfaden für Datennutzer](#) (Veröffentlichungsdatum: 17/05/2004) verfügbar.

Jährliche Veränderungsrate (%)



1 Die Eurozone besteht aus: Belgien, Deutschland, Griechenland, Spanien, Frankreich, Irland, Italien, Luxemburg, den Niederlanden, Österreich, Portugal und Finnland.

2 Für Portugal standen die Daten für November 2006 zum Zeitpunkt der Veröffentlichung unter Embargo. Zur Berechnung der Gesamtwerte für die Eurozone, die EU und den EWR wurden die portugiesischen Daten jedoch herangezogen.

Im Oktober 2006 änderte Italien seinen Preiserfassungszeitraum. Die Erfassung erfolgt nun zwischen dem 1. und dem 21. des Bezugsmonats. Bis September 2006 lag der Erfassungszeitraum zwischen dem 16. des Vormonats und dem 15. des Bezugsmonats. Die Zahlen ab Oktober 2006 könnten eventuell revidiert werden.

3 Der EVPI (EVPI = „Europäischer Verbraucherpreisindex“ nach der Verordnung des Rates (EG) Nr. 2494/95 vom 23. Oktober 1995) ist das offizielle Aggregat der EU. Er erfasst 15 Mitgliedstaaten bis April 2004 und 25 Mitgliedstaaten ab Mai 2004. Die zehn neuen Mitgliedstaaten sind ab Mai 2004 anhand einer Kettenindexformel in den EVPI integriert.

4 Für die USA und Japan werden die nationalen VPis ausgewiesen, die nicht direkt mit den HVPIs vergleichbar sind.



Manuskript abgeschlossen: 21.12.2006

Datenextraktion am: 15.12.2006

ISSN 1024-431X

Katalognummer: KS-NJ-06-027-DE-N

© Europäische Gemeinschaften, 2006

TABELLE I
HARMONISierter VERBRAUCHERPREISINDEX
INDEXZAHLEN 2005 = 100

| | Eurozone | EVPI | BE | CZ | DK | DE | EE | EL | ES | FR | IE | IT | CY | LV |
|---------------------------------|----------|---------|--------|-------|-------|-------|--------|--------|--------|--------|-------|-------|--------|--------|
| Jahresdurchschnittsindex | | | | | | | | | | | | | | |
| 2003 | 95.81 | 95.95 | 95.75 | 96.0 | 97.5 | 96.4 | 93.22 | 93.79 | 93.86 | 95.89 | 95.7 | 95.7 | 96.18 | 88.10 |
| 2004 | 97.86 | 97.88 | 97.53 | 98.4 | 98.3 | 98.1 | 96.05 | 96.63 | 96.73 | 98.14 | 97.9 | 97.8 | 98.00 | 93.55 |
| 2005 | 100.00 | 100.00 | 100.00 | 100.0 | 100.0 | 100.0 | 100.00 | 100.00 | 100.00 | 100.00 | 100.0 | 100.0 | 100.00 | 100.00 |
| Monatlicher Index - 2004 | | | | | | | | | | | | | | |
| Jan | 96.45 | 96.51 | 95.05 | 97.7 | 97.4 | 97.0 | 93.65 | 94.71 | 94.44 | 96.79 | 95.9 | 96.2 | 95.55 | 90.36 |
| Feb | 96.62 | 96.69 | 96.84 | 97.8 | 97.8 | 97.2 | 93.85 | 94.05 | 94.52 | 97.22 | 96.8 | 96.1 | 95.55 | 90.92 |
| Mär | 97.29 | 97.28 | 96.92 | 98.0 | 98.3 | 97.7 | 94.18 | 96.74 | 95.22 | 97.65 | 97.2 | 97.1 | 96.42 | 91.82 |
| Apr | 97.72 | 97.69 | 97.44 | 98.0 | 98.4 | 97.9 | 94.77 | 97.10 | 96.55 | 97.91 | 97.5 | 97.9 | 97.13 | 92.37 |
| Mai | 98.05 | 98.08 | 97.78 | 98.6 | 98.8 | 98.1 | 96.62 | 97.54 | 97.09 | 98.26 | 97.7 | 98.0 | 97.99 | 93.55 |
| Jun | 98.05 | 98.09 | 97.69 | 98.8 | 98.5 | 98.1 | 96.95 | 97.32 | 97.25 | 98.35 | 98.2 | 98.2 | 98.62 | 94.10 |
| Jul | 97.88 | 97.92 | 96.67 | 99.0 | 98.2 | 98.5 | 96.69 | 95.43 | 96.55 | 98.17 | 97.8 | 98.0 | 97.36 | 94.31 |
| Aug | 98.05 | 98.06 | 98.29 | 99.0 | 97.8 | 98.6 | 96.62 | 95.14 | 97.01 | 98.35 | 98.4 | 97.8 | 97.84 | 94.24 |
| Sep | 98.22 | 98.23 | 98.20 | 98.3 | 98.6 | 98.3 | 96.82 | 97.18 | 97.17 | 98.43 | 98.5 | 98.3 | 98.86 | 94.66 |
| Okt | 98.56 | 98.57 | 98.71 | 98.8 | 99.0 | 98.5 | 97.15 | 97.90 | 98.18 | 98.78 | 98.6 | 98.6 | 99.88 | 95.00 |
| Nov | 98.48 | 98.53 | 98.54 | 98.6 | 98.7 | 98.1 | 97.54 | 97.98 | 98.42 | 98.78 | 98.8 | 98.8 | 100.28 | 95.49 |
| Dez | 98.90 | 98.92 | 98.20 | 98.6 | 98.4 | 99.2 | 97.74 | 98.49 | 98.34 | 98.95 | 98.9 | 99.1 | 100.51 | 95.77 |
| Monatlicher Index - 2005 | | | | | | | | | | | | | | |
| Jan | 98.31 | 98.42 | 96.92 | 99.2 | 98.2 | 98.6 | 97.54 | 98.70 | 97.40 | 98.35 | 97.9 | 98.1 | 98.23 | 96.39 |
| Feb | 98.65 | 98.73 | 99.06 | 99.2 | 98.8 | 99.0 | 98.14 | 97.03 | 97.64 | 99.04 | 98.8 | 98.0 | 97.84 | 97.29 |
| Mär | 99.32 | 99.32 | 99.65 | 99.1 | 99.6 | 99.3 | 98.73 | 99.50 | 98.49 | 99.73 | 99.0 | 99.2 | 98.70 | 97.85 |
| Apr | 99.75 | 99.73 | 99.82 | 99.4 | 100.1 | 99.3 | 99.19 | 100.30 | 99.90 | 99.91 | 99.6 | 100.0 | 99.80 | 98.89 |
| Mai | 100.00 | 100.00 | 99.99 | 99.5 | 100.0 | 99.7 | 99.39 | 100.67 | 100.05 | 99.91 | 99.8 | 100.3 | 100.04 | 99.65 |
| Jun | 100.08 | 100.08 | 100.33 | 100.1 | 100.2 | 99.9 | 100.05 | 100.45 | 100.36 | 100.08 | 100.1 | 100.3 | 100.12 | 100.27 |
| Jul | 100.00 | 100.02 | 99.31 | 100.4 | 100.0 | 100.3 | 100.45 | 99.14 | 99.74 | 99.91 | 100.0 | 100.1 | 98.62 | 100.27 |
| Aug | 100.25 | 100.26 | 101.10 | 100.4 | 100.1 | 100.5 | 100.71 | 98.56 | 100.21 | 100.34 | 100.5 | 99.9 | 99.33 | 100.13 |
| Sep | 100.76 | 100.71 | 101.10 | 100.3 | 100.9 | 100.8 | 101.57 | 100.88 | 100.83 | 100.77 | 101.2 | 100.5 | 100.98 | 101.66 |
| Okt | 101.02 | 100.95 | 100.93 | 101.2 | 100.9 | 100.8 | 101.50 | 101.54 | 101.61 | 100.77 | 101.2 | 101.2 | 102.09 | 102.35 |
| Nov | 100.76 | 100.75 | 100.85 | 100.8 | 100.5 | 100.3 | 101.43 | 101.32 | 101.77 | 100.51 | 101.0 | 101.2 | 102.32 | 102.70 |
| Dez | 101.10 | 101.03 | 100.93 | 100.5 | 100.6 | 101.3 | 101.30 | 101.90 | 102.00 | 100.69 | 100.8 | 101.2 | 101.93 | 102.56 |
| Monatlicher Index - 2006 | | | | | | | | | | | | | | |
| Jan | 100.66 | 100.64 | 99.60 | 101.6 | 100.2 | 100.7 | 102.08 | 101.67 | 101.53 | 100.60 | 100.3 | 100.3 | 100.22 | 103.67 |
| Feb | 100.95 | 100.93 | 101.88 | 101.6 | 100.9 | 101.1 | 102.60 | 100.07 | 101.60 | 100.99 | 101.5 | 100.2 | 100.13 | 104.09 |
| Mär | 101.53 | 101.41 | 101.81 | 101.5 | 101.4 | 101.2 | 102.71 | 102.82 | 102.32 | 101.44 | 101.8 | 101.4 | 101.31 | 104.29 |
| Apr | 102.20 | 102.07 | 102.38 | 101.7 | 101.9 | 101.6 | 103.44 | 103.84 | 103.80 | 101.89 | 102.3 | 102.3 | 102.34 | 104.96 |
| Mai | 102.48 | 102.42 | 102.74 | 102.3 | 102.1 | 101.8 | 104.00 | 103.96 | 104.17 | 102.32 | 102.8 | 102.6 | 102.54 | 106.69 |
| Jun | 102.56 | 102.53 | 102.82 | 102.4 | 102.3 | 101.9 | 104.48 | 103.90 | 104.33 | 102.32 | 103.0 | 102.7 | 102.75 | 106.58 |
| Jul | 102.43 | 102.43 | 101.72 | 102.8 | 102.0 | 102.4 | 104.94 | 103.02 | 103.76 | 102.13 | 102.9 | 102.4 | 101.42 | 107.22 |
| Aug | 102.52 | 102.60 | 103.47 | 103.0 | 102.0 | 102.3 | 105.70 | 101.96 | 103.99 | 102.46 | 103.7 | 102.2 | 102.04 | 106.96 |
| Sep | 102.52 | 102.65 | 102.98 | 102.5 | 102.4 | 101.8 | 105.45 | 104.05 | 103.79 | 102.26 | 103.4 | 102.9 | 103.25 | 107.67 |
| Okt | 102.60 | 102.74 | 102.68 | 102.0 | 102.3 | 101.9 | 105.34 | 104.73 | 104.22 | 102.02 | 103.4 | 103.1 | 103.81 | 108.09 |
| Nov | 102.64p | 102.82p | 102.90 | 101.8 | 102.3 | 101.8 | 106.15 | 104.57 | 104.47 | 102.14 | 103.4 | 103.2 | 103.70 | 109.15 |
| Dez | | | | | | | | | | | | | | |

p vorläufig

TABELLE I
HARMONISIERTER VERBRAUCHERPREISINDEX
2005 = 100
INDEXZAHLEN

| LT | LU | HU | MT | NL | AT | PL | PT | SI | SK | FI | SE | UK | BG | RO | |
|---------------------------------|--------|--------|--------|---------|---------|-------|--------|--------|--------|---------|--------|-------|--------|--------|-------------|
| Jahresdurchschnittsindex | | | | | | | | | | | | | | | |
| 96.29 | 93.36 | 90.50 | 94.95 | 97.18 | 96.06 | 94.5 | 95.52 | 94.16 | 90.52 | 99.10 | 98.18 | 96.7 | 89.69 | 81.94 | 2003 |
| 97.41 | 96.37 | 96.63 | 97.53 | 98.52 | 97.94 | 97.9 | 97.92 | 97.60 | 97.28 | 99.24 | 99.18 | 98.0 | 95.20 | 91.68 | 2004 |
| 100.00 | 100.00 | 100.00 | 100.00 | 100.00 | 100.00 | 100.0 | 100.00 | 100.00 | 100.00 | 100.00 | 100.00 | 100.0 | 100.00 | 100.00 | 2005 |
| Monatlicher Index - 2004 | | | | | | | | | | | | | | | |
| 95.77 | 94.02 | 94.41 | 94.26 | 97.33 | 96.80 | 95.8 | 96.40 | 95.58 | 96.09 | 99.01 | 98.36 | 97.0 | 94.79 | 88.42 | Jan |
| 95.61 | 95.24 | 95.47 | 94.33 | 97.89 | 97.23 | 95.9 | 96.24 | 95.75 | 96.73 | 99.45 | 98.18 | 97.2 | 95.12 | 88.98 | Feb |
| 96.09 | 95.32 | 95.97 | 94.72 | 98.69 | 97.58 | 96.2 | 96.48 | 96.32 | 96.95 | 99.01 | 99.06 | 97.4 | 95.05 | 89.42 | Mär |
| 96.41 | 95.81 | 96.25 | 98.70 | 99.01 | 97.49 | 96.9 | 97.42 | 96.94 | 96.95 | 99.01 | 99.32 | 97.8 | 95.32 | 89.94 | Apr |
| 97.93 | 96.29 | 97.12 | 98.86 | 99.18 | 97.84 | 98.0 | 98.20 | 97.79 | 97.27 | 99.19 | 99.67 | 98.1 | 95.35 | 90.20 | Mai |
| 98.01 | 96.70 | 97.17 | 99.17 | 98.45 | 98.02 | 98.6 | 99.37 | 98.24 | 97.48 | 99.10 | 99.15 | 98.1 | 93.66 | 90.73 | Jun |
| 97.93 | 95.89 | 97.17 | 99.64 | 98.13 | 97.75 | 98.5 | 98.51 | 98.75 | 97.65 | 98.84 | 98.97 | 97.8 | 94.80 | 91.89 | Jul |
| 97.61 | 96.94 | 96.85 | 99.17 | 98.29 | 98.10 | 98.2 | 98.12 | 98.47 | 97.54 | 99.10 | 98.88 | 98.1 | 94.38 | 92.39 | Aug |
| 98.17 | 97.10 | 96.94 | 99.64 | 99.10 | 98.02 | 98.5 | 98.04 | 98.07 | 97.65 | 99.53 | 99.67 | 98.2 | 95.27 | 93.26 | Sep |
| 98.33 | 97.59 | 97.40 | 99.64 | 99.26 | 98.54 | 99.1 | 98.51 | 98.18 | 97.81 | 99.88 | 100.11 | 98.4 | 95.43 | 94.40 | Okt |
| 98.57 | 97.92 | 97.45 | 95.66 | 98.85 | 98.71 | 99.4 | 98.82 | 98.75 | 97.70 | 99.36 | 99.41 | 98.6 | 96.02 | 95.02 | Nov |
| 98.49 | 97.67 | 97.40 | 96.60 | 98.05 | 99.15 | 99.4 | 98.90 | 98.30 | 97.54 | 99.36 | 99.41 | 99.1 | 97.23 | 95.56 | Dez |
| Monatlicher Index - 2005 | | | | | | | | | | | | | | | |
| 98.49 | 96.70 | 98.14 | 96.05 | 98.53 | 99.15 | 99.4 | 98.35 | 97.79 | 99.20 | 98.84 | 98.88 | 98.6 | 97.95 | 96.33 | Jan |
| 98.65 | 98.32 | 98.69 | 96.67 | 99.34 | 99.50 | 99.4 | 98.27 | 98.47 | 99.31 | 99.45 | 99.32 | 98.8 | 98.80 | 96.92 | Feb |
| 99.21 | 98.65 | 99.15 | 97.14 | 100.14 | 99.93 | 99.5 | 98.67 | 99.48 | 99.31 | 99.88 | 99.58 | 99.3 | 99.12 | 97.21 | Mär |
| 99.53 | 99.38 | 99.88 | 100.65 | 100.30 | 99.76 | 99.9 | 99.37 | 99.54 | 99.53 | 100.15 | 99.76 | 99.7 | 100.18 | 98.97 | Apr |
| 99.77 | 99.86 | 100.48 | 101.27 | 100.22 | 99.76 | 100.1 | 99.92 | 99.88 | 99.63 | 99.80 | 99.85 | 100.0 | 99.70 | 99.26 | Mai |
| 99.93 | 99.78 | 100.76 | 101.27 | 99.90 | 100.02 | 100.0 | 99.99 | 99.93 | 100.01 | 100.06 | 99.93 | 100.0 | 98.41 | 99.56 | Jun |
| 99.77 | 99.70 | 100.67 | 101.35 | 99.58 | 99.76 | 100.0 | 100.38 | 100.72 | 99.69 | 99.71 | 99.67 | 100.1 | 98.50 | 100.53 | Jul |
| 99.85 | 101.08 | 100.21 | 101.66 | 99.90 | 99.93 | 100.0 | 100.54 | 100.22 | 99.63 | 100.06 | 99.93 | 100.4 | 99.07 | 100.64 | Aug |
| 100.65 | 101.65 | 100.39 | 101.66 | 100.78 | 100.55 | 100.4 | 100.70 | 101.18 | 99.90 | 100.67 | 100.72 | 100.6 | 100.46 | 101.23 | Sep |
| 101.30 | 102.46 | 100.44 | 102.60 | 100.78 | 100.55 | 100.7 | 101.09 | 101.35 | 101.24 | 100.67 | 100.98 | 100.7 | 101.65 | 102.10 | Okt |
| 101.38 | 101.41 | 100.62 | 99.79 | 100.46 | 100.37 | 100.5 | 101.32 | 100.78 | 101.24 | 100.32 | 100.63 | 100.7 | 102.65 | 103.33 | Nov |
| 101.46 | 101.00 | 100.58 | 99.87 | 100.06 | 100.72 | 100.2 | 101.40 | 100.67 | 101.30 | 100.41 | 100.72 | 101.0 | 103.50 | 103.90 | Dez |
| Monatlicher Index - 2006 | | | | | | | | | | | | | | | |
| 101.98 | 100.63 | 100.55 | 98.31 | 100.28 | 100.66 | 100.3 | 101.01 | 100.32 | 103.23 | 100.00 | 100.01 | 100.5 | 104.33 | 104.96 | Jan |
| 102.03 | 102.13 | 100.92 | 98.93 | 100.78 | 100.99 | 100.3 | 101.21 | 100.70 | 103.56 | 100.77 | 100.37 | 100.9 | 107.48 | 105.21 | Feb |
| 102.24 | 102.31 | 101.51 | 100.00 | 101.58 | 101.26 | 100.4 | 102.42 | 101.43 | 103.57 | 101.08r | 101.03 | 101.1 | 107.78 | 105.43 | Mär |
| 102.94 | 102.81 | 102.27 | 104.16 | 102.06 | 101.84 | 101.1 | 103.01 | 102.34 | 103.90 | 101.61 | 101.58 | 101.7 | 108.26 | 105.88 | Apr |
| 103.39 | 103.43 | 103.37 | 104.83 | 102.02 | 101.86 | 101.6 | 103.57 | 103.27 | 104.41 | 101.52 | 101.78 | 102.2 | 108.22 | 106.52 | Mai |
| 103.66 | 103.70 | 103.66 | 104.57 | 101.68 | 101.88 | 101.5 | 103.52 | 102.96 | 104.55 | 101.54 | 101.78 | 102.5 | 106.52 | 106.69 | Jun |
| 104.18 | 103.08 | 103.85 | 104.96 | 101.32 | 101.72 | 101.4 | 103.38 | 102.66 | 104.68 | 101.07 | 101.44 | 102.5 | 106.03 | 106.81 | Jul |
| 104.12 | 104.23 | 104.91 | 104.66 | 101.81 | 102.03 | 101.7 | 103.29 | 103.35 | 104.57 | 101.37 | 101.48 | 102.9 | 105.79 | 106.74 | Aug |
| 103.98 | 103.65 | 106.33 | 104.86 | 102.30 | 101.89 | 101.8 | 103.71 | 103.68 | 104.36 | 101.47 | 101.97 | 103.0 | 106.11 | 106.80 | Sep |
| 105.02 | 103.08 | 106.81 | 104.30 | 102.12 | 101.82r | 101.8 | 103.73 | 102.91 | 104.38 | 101.62 | 102.17 | 103.2 | 107.44 | 107.02 | Okt |
| 105.84 | 103.19 | 107.04 | 100.71 | 102.10p | 101.94p | 101.8 | : | 103.23 | 104.94 | 101.62 | 102.18 | 103.4 | 108.96 | 108.19 | Nov |
| | | | | | | | | | | | | | | | Dez |

p vorläufig r revidiert : nicht verfügbar

TABELLE II
HARMONISIERTER VERBRAUCHERPREISINDEX
 VERÄNDERUNGSRATEN (%)

| | Eurozone | EVPI | BE | CZ | DK | DE | EE | EL | ES | FR | IE | IT | CY | LV |
|---|----------|------|-----|------|-----|-----|-----|-----|-----|-----|-----|-----|-----|-----|
| Jährliche Veränderungsrate des Jahresdurchschnitts | | | | | | | | | | | | | | |
| 2003/12 | 2.1 | 2.0 | 1.5 | -0.1 | 2.0 | 1.0 | 1.4 | 3.4 | 3.1 | 2.2 | 4.0 | 2.8 | 4.0 | 2.9 |
| 2004/12 | 2.1 | 2.0 | 1.9 | 2.6 | 0.9 | 1.8 | 3.0 | 3.0 | 3.1 | 2.3 | 2.3 | 2.3 | 1.9 | 6.2 |
| 2005/12 | 2.2 | 2.2 | 2.5 | 1.6 | 1.7 | 1.9 | 4.1 | 3.5 | 3.4 | 1.9 | 2.2 | 2.2 | 2.0 | 6.9 |
| 2006/11 | 2.2p | 2.2p | 2.4 | 2.1 | 1.9 | 1.8 | 4.3 | 3.3 | 3.6 | 1.9 | 2.6 | 2.2 | 2.2 | 6.6 |
| Jährliche Veränderungsrate - 2004 | | | | | | | | | | | | | | |
| Jan | 1.9 | 1.8 | 1.4 | 2.0 | 0.9 | 1.1 | 0.6 | 3.1 | 2.3 | 2.2 | 2.2 | 2.1 | 1.6 | 4.0 |
| Feb | 1.6 | 1.5 | 1.2 | 2.0 | 0.6 | 0.8 | 0.6 | 2.6 | 2.2 | 1.9 | 2.2 | 2.5 | 1.4 | 4.3 |
| Mär | 1.7 | 1.5 | 1.0 | 2.2 | 0.4 | 1.1 | 0.7 | 2.9 | 2.2 | 1.9 | 1.9 | 2.3 | 0.1 | 4.7 |
| Apr | 2.0 | 1.8 | 1.7 | 2.0 | 0.5 | 1.7 | 1.5 | 3.1 | 2.7 | 2.4 | 1.7 | 2.3 | 0.1 | 5.0 |
| Mai | 2.5 | 2.3 | 2.4 | 2.6 | 1.1 | 2.1 | 3.7 | 3.1 | 3.4 | 2.8 | 2.1 | 2.3 | 1.2 | 6.1 |
| Jun | 2.4 | 2.3 | 2.0 | 2.7 | 0.8 | 2.0 | 4.4 | 3.0 | 3.5 | 2.7 | 2.5 | 2.4 | 2.4 | 6.1 |
| Jul | 2.3 | 2.2 | 2.1 | 3.0 | 1.1 | 2.1 | 4.0 | 3.1 | 3.3 | 2.6 | 2.5 | 2.3 | 2.9 | 6.7 |
| Aug | 2.3 | 2.1 | 2.0 | 3.1 | 0.8 | 2.1 | 3.9 | 2.8 | 3.3 | 2.5 | 2.5 | 2.4 | 2.8 | 7.8 |
| Sep | 2.1 | 2.0 | 1.8 | 2.8 | 0.9 | 2.0 | 3.8 | 2.9 | 3.2 | 2.2 | 2.4 | 2.2 | 1.8 | 7.7 |
| Okt | 2.4 | 2.2 | 2.7 | 3.1 | 1.5 | 2.3 | 4.0 | 3.3 | 3.6 | 2.3 | 2.5 | 2.1 | 2.0 | 7.2 |
| Nov | 2.2 | 2.1 | 2.3 | 2.6 | 1.0 | 2.0 | 4.4 | 3.2 | 3.5 | 2.2 | 2.7 | 2.1 | 2.6 | 7.2 |
| Dez | 2.4 | 2.2 | 1.9 | 2.5 | 0.9 | 2.3 | 4.8 | 3.1 | 3.3 | 2.3 | 2.4 | 2.4 | 3.9 | 7.4 |
| Jährliche Veränderungsrate - 2005 | | | | | | | | | | | | | | |
| Jan | 1.9 | 2.0 | 2.0 | 1.5 | 0.8 | 1.6 | 4.2 | 4.2 | 3.1 | 1.6 | 2.1 | 2.0 | 2.8 | 6.7 |
| Feb | 2.1 | 2.1 | 2.3 | 1.4 | 1.0 | 1.9 | 4.6 | 3.2 | 3.3 | 1.9 | 2.1 | 2.0 | 2.4 | 7.0 |
| Mär | 2.1 | 2.1 | 2.8 | 1.1 | 1.3 | 1.6 | 4.8 | 2.9 | 3.4 | 2.1 | 1.9 | 2.2 | 2.4 | 6.6 |
| Apr | 2.1 | 2.1 | 2.4 | 1.4 | 1.7 | 1.4 | 4.7 | 3.3 | 3.5 | 2.0 | 2.2 | 2.1 | 2.7 | 7.1 |
| Mai | 2.0 | 2.0 | 2.3 | 0.9 | 1.2 | 1.6 | 2.9 | 3.2 | 3.0 | 1.7 | 2.1 | 2.3 | 2.1 | 6.5 |
| Jun | 2.1 | 2.0 | 2.7 | 1.3 | 1.7 | 1.8 | 3.2 | 3.2 | 3.2 | 1.8 | 1.9 | 2.1 | 1.5 | 6.6 |
| Jul | 2.2 | 2.1 | 2.7 | 1.4 | 1.8 | 1.8 | 3.9 | 3.9 | 3.3 | 1.8 | 2.2 | 2.1 | 1.3 | 6.3 |
| Aug | 2.2 | 2.2 | 2.9 | 1.4 | 2.4 | 1.9 | 4.2 | 3.6 | 3.3 | 2.0 | 2.1 | 2.1 | 1.5 | 6.3 |
| Sep | 2.6 | 2.5 | 3.0 | 2.0 | 2.3 | 2.5 | 4.9 | 3.8 | 3.8 | 2.4 | 2.7 | 2.2 | 2.1 | 7.4 |
| Okt | 2.5 | 2.4 | 2.2 | 2.4 | 1.9 | 2.3 | 4.5 | 3.7 | 3.5 | 2.0 | 2.6 | 2.6 | 2.2 | 7.7 |
| Nov | 2.3 | 2.3 | 2.3 | 2.2 | 1.8 | 2.2 | 4.0 | 3.4 | 3.4 | 1.8 | 2.2 | 2.4 | 2.0 | 7.6 |
| Dez | 2.2 | 2.1 | 2.8 | 1.9 | 2.2 | 2.1 | 3.6 | 3.5 | 3.7 | 1.8 | 1.9 | 2.1 | 1.4 | 7.1 |
| Jährliche Veränderungsrate - 2006 | | | | | | | | | | | | | | |
| Jan | 2.4 | 2.3 | 2.8 | 2.4 | 2.0 | 2.1 | 4.7 | 3.0 | 4.2 | 2.3 | 2.5 | 2.2 | 2.0 | 7.6 |
| Feb | 2.3 | 2.2 | 2.8 | 2.4 | 2.1 | 2.1 | 4.5 | 3.1 | 4.1 | 2.0 | 2.7 | 2.2 | 2.3 | 7.0 |
| Mär | 2.2 | 2.1 | 2.2 | 2.4 | 1.8 | 1.9 | 4.0 | 3.3 | 3.9 | 1.7 | 2.8 | 2.2 | 2.6 | 6.6 |
| Apr | 2.5 | 2.3 | 2.6 | 2.3 | 1.8 | 2.3 | 4.3 | 3.5 | 3.9 | 2.0 | 2.7 | 2.3 | 2.5 | 6.1 |
| Mai | 2.5 | 2.4 | 2.8 | 2.8 | 2.1 | 2.1 | 4.6 | 3.3 | 4.1 | 2.4 | 3.0 | 2.3 | 2.5 | 7.1 |
| Jun | 2.5 | 2.4 | 2.5 | 2.3 | 2.1 | 2.0 | 4.4 | 3.4 | 4.0 | 2.2 | 2.9 | 2.4 | 2.6 | 6.3 |
| Jul | 2.4 | 2.4 | 2.4 | 2.4 | 2.0 | 2.1 | 4.5 | 3.9 | 4.0 | 2.2 | 2.9 | 2.3 | 2.8 | 6.9 |
| Aug | 2.3 | 2.3 | 2.3 | 2.6 | 1.9 | 1.8 | 5.0 | 3.4 | 3.8 | 2.1 | 3.2 | 2.3 | 2.7 | 6.8 |
| Sep | 1.7 | 1.9 | 1.9 | 2.2 | 1.5 | 1.0 | 3.8 | 3.1 | 2.9 | 1.5 | 2.2 | 2.4 | 2.2 | 5.9 |
| Okt | 1.6 | 1.8 | 1.7 | 0.8 | 1.4 | 1.1 | 3.8 | 3.1 | 2.6 | 1.2 | 2.2 | 1.9 | 1.7 | 5.6 |
| Nov | 1.9p | 2.1p | 2.0 | 1.0 | 1.8 | 1.5 | 4.7 | 3.2 | 2.7 | 1.6 | 2.4 | 2.0 | 1.3 | 6.3 |
| Dez | | | | | | | | | | | | | | |

p vorläufig

TABELLE II
HARMONISIERTER VERBRAUCHERPREISINDEX
VERÄNDERUNGSRATEN (%)

| LT | LU | HU | MT | NL | AT | PL | PT | SI | SK | FI | SE | UK | BG | RO | |
|---|-----|-----|-----|------|------|-----|-----|-----|-----|------|-----|-----|-----|------|---------|
| Jährliche Veränderungsrate des Jahresdurchschnitts | | | | | | | | | | | | | | | |
| -1.1 | 2.5 | 4.7 | 1.9 | 2.2 | 1.3 | 0.7 | 3.3 | 5.7 | 8.4 | 1.3 | 2.3 | 1.4 | 2.3 | 15.3 | 2003/12 |
| 1.2 | 3.2 | 6.8 | 2.7 | 1.4 | 2.0 | 3.6 | 2.5 | 3.7 | 7.5 | 0.1 | 1.0 | 1.3 | 6.1 | 11.9 | 2004/12 |
| 2.7 | 3.8 | 3.5 | 2.5 | 1.5 | 2.1 | 2.2 | 2.1 | 2.5 | 2.8 | 0.8 | 0.8 | 2.1 | 5.0 | 9.1 | 2005/12 |
| 3.7 | 3.1 | 3.8 | 2.8 | 1.7p | 1.7p | 1.2 | : | 2.5 | 4.3 | 1.3 | 1.5 | 2.2 | 7.3 | 6.9 | 2006/11 |
| Jährliche Veränderungsrate - 2004 | | | | | | | | | | | | | | | |
| -1.2 | 2.3 | 6.7 | 2.8 | 1.5 | 1.2 | 1.8 | 2.2 | 4.0 | 8.3 | 0.8 | 1.3 | 1.4 | 6.4 | 13.9 | Jan |
| -1.2 | 2.5 | 7.0 | 2.5 | 1.3 | 1.5 | 1.8 | 2.1 | 3.6 | 8.4 | 0.4 | 0.1 | 1.3 | 6.6 | 13.7 | Feb |
| -0.9 | 2.0 | 6.6 | 2.1 | 1.2 | 1.5 | 1.8 | 2.2 | 3.5 | 8.0 | -0.4 | 0.4 | 1.1 | 6.1 | 13.1 | Mär |
| -0.7 | 2.7 | 7.0 | 3.6 | 1.5 | 1.5 | 2.3 | 2.4 | 3.6 | 7.9 | -0.4 | 1.0 | 1.1 | 6.1 | 12.5 | Apr |
| 1.1 | 3.4 | 7.8 | 3.1 | 1.7 | 2.1 | 3.5 | 2.5 | 3.9 | 8.2 | -0.1 | 1.5 | 1.5 | 6.8 | 12.3 | Mai |
| 1.1 | 3.8 | 7.5 | 3.2 | 1.5 | 2.3 | 4.2 | 3.7 | 3.9 | 8.2 | -0.1 | 1.2 | 1.6 | 7.3 | 12.0 | Jun |
| 1.7 | 3.8 | 7.2 | 3.1 | 1.2 | 2.1 | 4.7 | 2.9 | 3.7 | 8.4 | 0.2 | 1.2 | 1.4 | 7.6 | 12.1 | Jul |
| 2.2 | 3.6 | 7.2 | 2.5 | 1.2 | 2.2 | 4.8 | 2.4 | 3.7 | 7.1 | 0.3 | 1.1 | 1.3 | 6.3 | 12.4 | Aug |
| 3.1 | 3.1 | 6.7 | 3.2 | 1.2 | 1.8 | 4.6 | 2.1 | 3.4 | 6.6 | 0.2 | 1.1 | 1.1 | 6.3 | 11.1 | Sep |
| 3.1 | 4.1 | 6.4 | 2.7 | 1.5 | 2.4 | 4.6 | 2.4 | 3.4 | 6.6 | 0.6 | 1.5 | 1.2 | 5.8 | 10.8 | Okt |
| 2.9 | 4.0 | 5.8 | 1.9 | 1.5 | 2.3 | 4.5 | 2.6 | 3.8 | 6.3 | 0.2 | 1.1 | 1.5 | 4.5 | 9.9 | Nov |
| 2.8 | 3.5 | 5.5 | 1.9 | 1.2 | 2.5 | 4.4 | 2.6 | 3.3 | 5.8 | 0.1 | 0.9 | 1.7 | 4.0 | 9.3 | Dez |
| Jährliche Veränderungsrate - 2005 | | | | | | | | | | | | | | | |
| 2.8 | 2.9 | 4.0 | 1.9 | 1.2 | 2.4 | 3.8 | 2.0 | 2.3 | 3.2 | -0.2 | 0.5 | 1.6 | 3.3 | 8.9 | Jan |
| 3.2 | 3.2 | 3.4 | 2.5 | 1.5 | 2.3 | 3.6 | 2.1 | 2.8 | 2.7 | 0.0 | 1.2 | 1.7 | 3.9 | 8.9 | Feb |
| 3.2 | 3.5 | 3.3 | 2.6 | 1.5 | 2.4 | 3.4 | 2.3 | 3.3 | 2.4 | 0.9 | 0.5 | 1.9 | 4.3 | 8.7 | Mär |
| 3.2 | 3.7 | 3.8 | 2.0 | 1.3 | 2.3 | 3.1 | 2.0 | 2.7 | 2.7 | 1.2 | 0.4 | 1.9 | 5.1 | 10.0 | Apr |
| 1.9 | 3.7 | 3.5 | 2.4 | 1.0 | 2.0 | 2.1 | 1.8 | 2.1 | 2.4 | 0.6 | 0.2 | 1.9 | 4.6 | 10.0 | Mai |
| 2.0 | 3.2 | 3.7 | 2.1 | 1.5 | 2.0 | 1.4 | 0.6 | 1.7 | 2.6 | 1.0 | 0.8 | 2.0 | 5.1 | 9.7 | Jun |
| 1.9 | 4.0 | 3.6 | 1.7 | 1.5 | 2.1 | 1.5 | 1.9 | 2.0 | 2.1 | 0.9 | 0.7 | 2.3 | 3.9 | 9.4 | Jul |
| 2.3 | 4.3 | 3.5 | 2.5 | 1.6 | 1.9 | 1.8 | 2.5 | 1.8 | 2.1 | 1.0 | 1.1 | 2.4 | 5.0 | 8.9 | Aug |
| 2.5 | 4.7 | 3.6 | 2.0 | 1.7 | 2.6 | 1.9 | 2.7 | 3.2 | 2.3 | 1.1 | 1.1 | 2.5 | 5.4 | 8.5 | Sep |
| 3.0 | 5.0 | 3.1 | 3.0 | 1.5 | 2.0 | 1.6 | 2.6 | 3.2 | 3.5 | 0.8 | 0.9 | 2.3 | 6.5 | 8.2 | Okt |
| 2.9 | 3.6 | 3.3 | 4.3 | 1.6 | 1.7 | 1.1 | 2.5 | 2.1 | 3.6 | 1.0 | 1.2 | 2.1 | 6.9 | 8.7 | Nov |
| 3.0 | 3.4 | 3.3 | 3.4 | 2.0 | 1.6 | 0.8 | 2.5 | 2.4 | 3.9 | 1.1 | 1.3 | 1.9 | 6.4 | 8.7 | Dez |
| Jährliche Veränderungsrate - 2006 | | | | | | | | | | | | | | | |
| 3.5 | 4.1 | 2.5 | 2.4 | 1.8 | 1.5 | 0.9 | 2.7 | 2.6 | 4.1 | 1.2 | 1.1 | 1.9 | 6.5 | 9.0 | Jan |
| 3.4 | 3.9 | 2.3 | 2.3 | 1.4 | 1.5 | 0.9 | 3.0 | 2.3 | 4.3 | 1.3 | 1.1 | 2.0 | 8.8 | 8.6 | Feb |
| 3.1 | 3.7 | 2.4 | 2.9 | 1.4 | 1.3 | 0.9 | 3.8 | 2.0 | 4.3 | 1.2 | 1.5 | 1.8 | 8.7 | 8.5 | Mär |
| 3.4 | 3.5 | 2.4 | 3.5 | 1.8 | 2.1 | 1.2 | 3.7 | 2.8 | 4.4 | 1.5 | 1.8 | 2.0 | 8.1 | 7.0 | Apr |
| 3.6 | 3.6 | 2.9 | 3.5 | 1.8 | 2.1 | 1.5 | 3.7 | 3.4 | 4.8 | 1.7 | 1.9 | 2.2 | 8.5 | 7.3 | Mai |
| 3.7 | 3.9 | 2.9 | 3.3 | 1.8 | 1.9 | 1.5 | 3.5 | 3.0 | 4.5 | 1.5 | 1.9 | 2.5 | 8.2 | 7.2 | Jun |
| 4.4 | 3.4 | 3.2 | 3.6 | 1.7 | 2.0 | 1.4 | 3.0 | 1.9 | 5.0 | 1.4 | 1.8 | 2.4 | 7.6 | 6.2 | Jul |
| 4.3 | 3.1 | 4.7 | 3.0 | 1.9 | 2.1 | 1.7 | 2.7 | 3.1 | 5.0 | 1.3 | 1.6 | 2.5 | 6.8 | 6.1 | Aug |
| 3.3 | 2.0 | 5.9 | 3.1 | 1.5 | 1.3 | 1.4 | 3.0 | 2.5 | 4.5 | 0.8 | 1.2 | 2.4 | 5.6 | 5.5 | Sep |
| 3.7 | 0.6 | 6.3 | 1.7 | 1.3 | 1.3r | 1.1 | 2.6 | 1.5 | 3.1 | 0.9 | 1.2 | 2.4 | 5.7 | 4.8 | Okt |
| 4.4 | 1.8 | 6.4 | 0.9 | 1.6p | 1.6p | 1.3 | : | 2.4 | 3.7 | 1.3 | 1.5 | 2.7 | 6.1 | 4.7 | Nov |
| | | | | | | | | | | | | | | | Dez |

p vorläufig r revidiert : nicht verfügbar

TABELLE III
HARMONISIERTER
VERBRAUCHERPREISINDEX
INDEXZAHLEN 2005 = 100

| | EWR | IS | NO | CH** |
|---------------------------------|---------|--------|-------|-------|
| Jahresdurchschnittsindex | | | | |
| 2003 | 95.97 | 96.41 | 97.9 | 98.0 |
| 2004 | 97.89 | 98.64 | 98.5 | 98.8 |
| 2005 | 100.00 | 100.00 | 100.0 | 100.0 |
| Monatlicher Index - 2004 | | | | |
| Jan | 96.52 | 97.17 | 97.7 | 97.9 |
| Feb | 96.71 | 96.79 | 97.9 | 97.9 |
| Mär | 97.29 | 97.56 | 98.4 | 98.1 |
| Apr | 97.69 | 97.94 | 98.6 | 99.0 |
| Mai | 98.08 | 98.63 | 98.7 | 99.2 |
| Jun | 98.10 | 99.17 | 98.7 | 99.4 |
| Jul | 97.92 | 98.86 | 98.6 | 98.3 |
| Aug | 98.06 | 98.79 | 98.3 | 98.7 |
| Sep | 98.23 | 99.17 | 98.7 | 98.7 |
| Okt | 98.57 | 99.71 | 99.0 | 99.6 |
| Nov | 98.54 | 99.79 | 99.0 | 99.7 |
| Dez | 98.92 | 100.10 | 98.8 | 99.6 |
| Monatlicher Index - 2005 | | | | |
| Jan | 98.42 | 99.71 | 98.7 | 99.1 |
| Feb | 98.73 | 99.56 | 98.7 | 99.3 |
| Mär | 99.32 | 99.94 | 99.2 | 99.6 |
| Apr | 99.73 | 99.48 | 99.7 | 100.4 |
| Mai | 100.00 | 99.17 | 100.1 | 100.3 |
| Jun | 100.08 | 99.56 | 100.3 | 100.0 |
| Jul | 100.02 | 99.40 | 99.9 | 99.5 |
| Aug | 100.26 | 99.17 | 100.1 | 99.6 |
| Sep | 100.71 | 100.79 | 100.8 | 100.1 |
| Okt | 100.95 | 101.25 | 100.8 | 100.9 |
| Nov | 100.75 | 100.87 | 100.8 | 100.7 |
| Dez | 101.03 | 101.10 | 100.8 | 100.6 |
| Monatlicher Index - 2006 | | | | |
| Jan | 100.64 | 101.01 | 100.5 | 100.4 |
| Feb | 100.93 | 100.78 | 101.4 | 100.7 |
| Mär | 101.42 | 101.93 | 101.6 | 100.6 |
| Apr | 102.08 | 102.72 | 102.5 | 101.4 |
| Mai | 102.43 | 103.92 | 102.6 | 101.6 |
| Jun | 102.53 | 105.27 | 102.4 | 101.6 |
| Jul | 102.43 | 105.71 | 102.2 | 100.9 |
| Aug | 102.60 | 106.17 | 102.2 | 101.1 |
| Sep | 102.66 | 106.95 | 103.8 | 100.9 |
| Okt | 102.75 | 107.14 | 103.8 | 101.2 |
| Nov | 102.83p | 107.06 | 103.6 | 101.2 |
| Dez | | | | |

TABELLE IV
HARMONISIERTER
VERBRAUCHERPREISINDEX
VERÄNDERUNGSRATEN (%)

| EWR | IS | NO | CH** | |
|---|-----|------|------|---------|
| Jährliche Veränderungsrate des Jahresdurchschnitts | | | | |
| 2.0 | 1.4 | 2.0 | 0.6 | 2003/12 |
| 2.0 | 2.3 | 0.6 | 0.8 | 2004/12 |
| 2.2 | 1.4 | 1.5 | 1.2 | 2005/12 |
| 2.2p | 4.2 | 2.5 | 1.1 | 2006/11 |
| Jährliche Veränderungsrate - 2004 | | | | |
| 1.7 | 1.5 | -1.5 | 0.2 | Jan |
| 1.5 | 1.4 | -1.5 | 0.1 | Feb |
| 1.5 | 1.0 | -0.4 | -0.1 | Mär |
| 1.8 | 1.5 | 0.5 | 0.6 | Apr |
| 2.3 | 2.3 | 1.1 | 0.9 | Mai |
| 2.3 | 2.8 | 1.3 | 1.1 | Jun |
| 2.2 | 2.7 | 1.6 | 0.8 | Jul |
| 2.1 | 3.1 | 1.1 | 1.0 | Aug |
| 2.0 | 2.7 | 1.1 | 0.8 | Sep |
| 2.2 | 2.9 | 1.4 | 1.3 | Okt |
| 2.1 | 2.9 | 1.4 | 1.5 | Nov |
| 2.2 | 2.9 | 1.2 | 1.4 | Dez |
| Jährliche Veränderungsrate - 2005 | | | | |
| 2.0 | 2.6 | 1.0 | 1.2 | Jan |
| 2.1 | 2.9 | 0.8 | 1.4 | Feb |
| 2.1 | 2.4 | 0.8 | 1.5 | Mär |
| 2.1 | 1.6 | 1.1 | 1.4 | Apr |
| 2.0 | 0.5 | 1.4 | 1.1 | Mai |
| 2.0 | 0.4 | 1.6 | 0.6 | Jun |
| 2.1 | 0.5 | 1.3 | 1.2 | Jul |
| 2.2 | 0.4 | 1.8 | 0.9 | Aug |
| 2.5 | 1.6 | 2.1 | 1.4 | Sep |
| 2.4 | 1.5 | 1.8 | 1.3 | Okt |
| 2.2 | 1.1 | 1.8 | 1.0 | Nov |
| 2.1 | 1.0 | 2.0 | 1.0 | Dez |
| Jährliche Veränderungsrate - 2006 | | | | |
| 2.3 | 1.3 | 1.8 | 1.3 | Jan |
| 2.2 | 1.2 | 2.7 | 1.4 | Feb |
| 2.1 | 2.0 | 2.4 | 1.0 | Mär |
| 2.4 | 3.3 | 2.8 | 1.1 | Apr |
| 2.4 | 4.8 | 2.5 | 1.4 | Mai |
| 2.4 | 5.7 | 2.1 | 1.6 | Jun |
| 2.4 | 6.3 | 2.3 | 1.4 | Jul |
| 2.3 | 7.1 | 2.1 | 1.5 | Aug |
| 1.9 | 6.1 | 3.0 | 0.8 | Sep |
| 1.8 | 5.8 | 3.0 | 0.3 | Okt |
| 2.1p | 6.1 | 2.8 | 0.5 | Nov |
| | | | | Dez |

p vorläufig ** nationale VPI

HAUPTGRUPPEN DER HARMONISIERTEN VERBRAUCHERPREISINDIZES

November 2006 / November 2005

JÄHRLICHE VERÄNDERUNGSRATEN (%)

| | 00. | 01. | 02. | 03. | 04. | 05. | 06. | 07. | 08. | 09. | 10. | 11. | 12. |
|-----------------|------|------|------|-------|------|------|------|------|-------|-------|------|------|------|
| Eurozone | 1.9p | 3.1p | 3.0p | 0.9p | 3.6p | 1.1p | 1.7p | 0.8p | -2.7p | -0.1p | 3.5p | 2.8p | 2.3p |
| EVPI | 2.1p | 3.4p | 2.9p | -0.1p | 4.8p | 0.7p | 1.9p | 0.6p | -2.0p | -0.3p | 6.0p | 3.0p | 2.6p |
| BE | 2.0 | 4.9 | 1.1 | 0.5 | 4.1 | 1.3 | 1.5 | -0.1 | -2.1 | -0.3 | 2.4 | 2.3 | 2.7 |
| CZ | 1.0 | 0.3 | 1.7 | -5.6 | 4.5 | -1.1 | 5.7 | -2.8 | 2.0 | -0.7 | 2.2 | 5.3 | 2.2 |
| DK | 1.8 | 4.7 | 1.3 | -1.8 | 2.6 | 0.7 | 1.3 | 1.1 | -0.5 | 0.6 | 5.0 | 2.8 | 1.2 |
| DE | 1.5 | 2.9 | 3.9 | 0.1 | 2.8 | 0.3 | 0.9 | 0.8 | -2.2 | 0.1 | 3.4 | 1.9 | 1.0 |
| EE | 4.7 | 6.1 | 4.1 | 3.2 | 14.9 | 2.8 | 3.8 | -0.4 | -5.5 | 3.7 | 5.7 | 4.6 | 4.0 |
| EL | 3.2 | 3.6 | 10.7 | 3.2 | 2.4 | 2.2 | 2.6 | 2.1 | 0.4 | 3.5 | 3.8 | 2.7 | 3.3 |
| ES | 2.7 | 4.0 | 1.0 | 1.3 | 4.8 | 2.7 | 1.5 | 0.5 | -1.5 | -0.6 | 4.4 | 4.4 | 4.1 |
| FR | 1.6 | 2.4 | 0.6 | 0.7 | 3.6 | 0.7 | 4.2 | 0.8 | -2.8 | -1.7 | 3.6 | 2.5 | 2.9 |
| IE | 2.4 | 1.7 | 0.8 | -2.0 | 6.5 | -1.6 | 4.4 | 0.1 | -0.3 | 2.4 | 4.9 | 4.1 | 3.0 |
| IT | 2.0 | 2.9 | 5.0 | 1.4 | 4.6 | 1.6 | -0.7 | 1.3 | -4.1 | 1.3 | 2.5 | 2.5 | 2.8 |
| CY | 1.3 | 5.3 | 1.0 | -2.0 | 1.6 | 0.2 | 3.7 | -2.3 | -2.3 | 1.4 | 5.7 | 0.6 | 3.2 |
| LV | 6.3 | 9.2 | 7.9 | 0.2 | 13.8 | 3.3 | 6.2 | 0.3 | -4.6 | 2.1 | 11.2 | 9.5 | 7.3 |
| LT | 4.4 | 7.9 | 1.1 | -3.4 | 10.7 | 1.1 | 6.3 | 2.1 | 0.1 | 0.6 | 0.2 | 4.2 | 5.3 |
| LU | 1.8 | 2.8 | 3.3 | 0.5 | 3.2 | 1.9 | 3.0 | -0.1 | -2.2 | 1.3 | 2.4 | 2.7 | 2.6 |
| HU | 6.4 | 13.5 | 7.6 | 1.0 | 13.2 | -0.1 | 3.8 | 1.7 | -4.7 | 2.2 | 8.3 | 7.8 | 3.3 |
| MT | 0.9 | 3.9 | 0.4 | -6.2 | 4.1 | 1.3 | 3.2 | -2.8 | 0.4 | 0.2 | 2.7 | 1.6 | 2.5 |
| NL | 1.6p | 2.1p | 1.4p | 1.2p | 4.9p | 0.4p | 3.9p | 0.3p | -5.3p | 0.6p | 1.2p | 2.5p | 0.5p |
| AT | 1.6p | 2.5p | 1.0p | -0.2p | 5.0p | 0.7p | 0.4p | 0.5p | -1.4p | -0.7p | 7.9p | 1.5p | 2.5p |
| PL | 1.3 | 2.1 | 1.5 | -7.2 | 4.5 | 0.2 | 0.9 | -2.6 | 0.5 | -2.2 | 1.0 | 2.4 | 4.5 |
| PT | : | : | : | : | : | : | : | : | : | : | : | : | : |
| SI | 2.4 | 3.8 | 4.7 | 0.9 | 1.8 | 3.8 | -0.5 | 0.7 | 0.6 | 1.4 | 1.1 | 3.9 | 4.9 |
| SK | 3.7 | 3.3 | 5.9 | -0.2 | 9.2 | 0.3 | 10.6 | -2.9 | -4.7 | 2.0 | 3.6 | 2.7 | 3.9 |
| FI | 1.3 | 3.0 | 1.0 | -1.1 | 2.5 | 0.5 | 0.1 | 0.0 | 1.2 | 0.2 | 1.6 | 2.2 | 2.9 |
| SE | 1.5 | 2.1 | 1.3 | 0.7 | 5.8 | -1.9 | 1.0 | -0.7 | -5.5 | 0.1 | 3.6 | 2.6 | 2.5 |
| UK | 2.7 | 5.0 | 2.7 | -3.2 | 11.1 | -0.5 | 3.1 | 0.8 | 0.7 | -0.7 | 14.0 | 3.2 | 3.5 |
| EEA | 2.1p | 3.4p | 2.9p | -0.2p | 4.9p | 0.7p | 1.9p | 0.6p | -2.0p | -0.2p | 6.0p | 3.0p | 2.6p |
| IS | 6.1 | 9.7 | 4.1 | 3.2 | 6.7 | 6.3 | 3.3 | 6.4 | 3.4 | 4.9 | 6.5 | 8.9 | 3.6 |
| NO | 2.8 | 2.2 | 2.4 | -4.1 | 10.6 | -1.3 | 3.4 | 2.3 | 2.1 | 0.9 | 2.4 | 3.9 | -0.8 |
| BG | 6.1 | 4.3 | 58.0 | 4.6 | 2.9 | 3.0 | 1.9 | 2.0 | -0.5 | 1.5 | 6.2 | 6.8 | 6.2 |
| RO | 4.7 | 0.9 | 22.8 | 3.6 | 12.2 | 2.0 | 0.6 | 1.2 | -1.7 | 3.3 | 6.8 | 5.7 | 3.8 |

p vorläufig : nicht verfügbar

COICOP/HVPI Abteilungen

- | | |
|--|--|
| 00. HVPI (Gesamtindex) | 06. Gesundheitspflege |
| 01. Nahrungsmittel und alkoholfreie Getränke | 07. Verkehr |
| 02. Alkoholische Getränke und Tabak | 08. Nachrichtenübermittlung |
| 03. Bekleidung und Schuhe | 09. Freizeit und Kultur |
| 04. Wohnung, Wasser, Elektrizität, Gas und andere Brennstoffe | 10. Erziehung und Unterricht |
| 05. Hausrat und laufende Instandhaltung des Hauses | 11. Restaurants und Hotels |
| | 12. Verschiedene Waren und Dienstleistungen |

Weitere Informationsquellen:

HICP Sektion auf der Eurostat-Webseite:

http://epp.eurostat.ec.europa.eu/pls/portal/url/page/PGP_DS_HICP

Daten:

Eurostat-Webseite / Wirtschaft und Finanzen / Daten



Journalisten können den Media Support Service kontaktieren:

BECH Gebäude Büro A4/125
L - 2920 Luxembourg

Tel. (352) 4301 33408
Fax (352) 4301 35349

E-mail: eurostat-mediasupport@ec.europa.eu

European Statistical Data Support:

Eurostat hat zusammen mit den anderen Mitgliedern des „Europäischen Statistischen Systems“ ein Netz von Unterstützungszentren eingerichtet; diese Unterstützungszentren gibt es in fast allen Mitgliedstaaten der EU und in einigen EFTA-Ländern.

Sie sollen die Internetnutzer europäischer statistischer Daten beraten und unterstützen.

Kontakt Informationen für dieses Unterstützungsnetz finden Sie auf unserer Webseite:

<http://ec.europa.eu/eurostat/>

Ein Verzeichnis unserer Verkaufsstellen in der ganzen Welt erhalten Sie beim:

Amt für amtliche Veröffentlichungen der Europäischen Gemeinschaften

2, rue Mercier
L - 2985 Luxembourg

URL: <http://publications.europa.eu>

E-mail: info-info-opoce@ec.europa.eu
