

# Harmonized Indices of Consumer Prices

## August 2006

# Statistics in focus

## ECONOMY AND FINANCE

20/2006

### Prices

Author

Christine WIRTZ

## Contents

Price Indices.....	2
Rates of Change.....	4
EEA Index Numbers and Rates of Change.....	6
COICOP/HICP Main categories.....	7

**Euro area**<sup>1</sup> annual inflation, as measured by the Monetary Union Index of Consumer Prices (MUICP), was 2.3% in August 2006, down from 2.4% in July 2006. A year earlier the rate was 2.2%.

**EU** annual inflation, as measured by the European Index of Consumer Prices (EICP)<sup>2</sup>, fell from 2.4% in July to 2.3% in August 2006. A year earlier the rate was 2.2%.

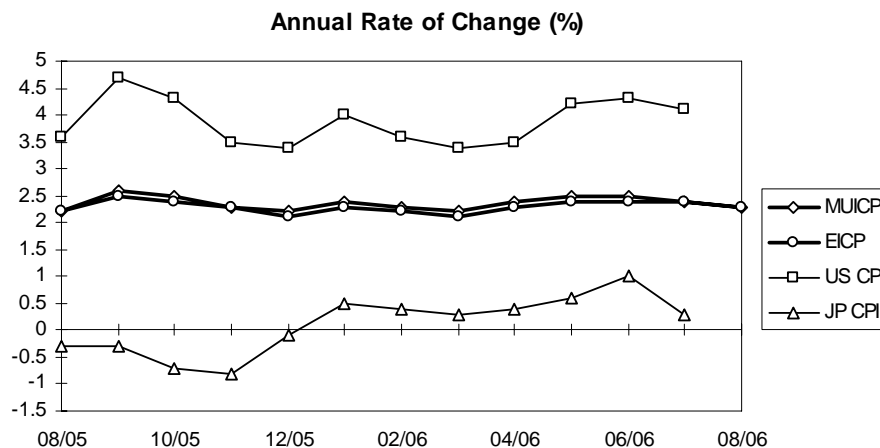
**EEA** annual inflation, as measured by the European Economic Area Index of Consumer Prices (EEAICP), was 2.3% in August 2006.

In August 2006, the highest annual inflation rates in EU Member States were recorded in **Latvia** (6.8%), **Estonia** and **Slovakia** (both 5.0%), and the lowest rates were observed in and **Finland** (1.3%), **Sweden** (1.6%) and **Poland** (1.7%).

For the **USA**<sup>3</sup> and **Japan**<sup>3</sup> no August data was available in time for publication.

The annual inflation rates for the **euro area**, the **EU** and the latest available rates for the **USA** and **Japan** are shown in the graph below.

Methodological notes can be accessed via the Eurostat internet site under Publications/Methods and nomenclatures/Harmonized Indices of Consumer Prices – [Short guide for users](#) (issue date: 17/05/2004).



- The euro area comprises: Belgium, Germany, Greece, Spain, France, Ireland, Italy, Luxembourg, the Netherlands, Austria, Portugal and Finland.*
- The EICP (EICP='European Index of Consumer Prices' as defined in Council Regulation (EC) No 2494/95 of 23 October 1995) is the official EU aggregate. It covers 15 Member States until April 2004 and 25 Member States starting from May 2004. The ten new Member States are integrated into the EICP starting from May 2004 using a chain index formula.*
- For the USA and Japan the national CPIs are given, which are not strictly comparable with the HICPs.*



TABLE I  
HARMONIZED INDICES OF CONSUMER PRICES  
INDEX NUMBERS 2005 = 100

	Euro area	EICP	BE	CZ	DK	DE	EE	EL	ES	FR	IE	IT	CY
<b>Annual Average Index</b>													
<b>2003</b>	95.81	95.95	95.75	96.0	97.5	96.4	93.22	93.79	93.86	95.89	95.7	95.7	96.18
<b>2004</b>	97.86	97.88	97.53	98.4	98.3	98.1	96.05	96.63	96.73	98.14	97.9	97.8	98.00
<b>2005</b>	100.00	100.00	100.00	100.0	100.0	100.0	100.00	100.00	100.00	100.00	100.0	100.0	100.00
<b>Monthly Index - 2004</b>													
<b>Jan</b>	96.45	96.51	95.05	97.7	97.4	97.0	93.65	94.71	94.44	96.79	95.9	96.2	95.55
<b>Feb</b>	96.62	96.69	96.84	97.8	97.8	97.2	93.85	94.05	94.52	97.22	96.8	96.1	95.55
<b>Mar</b>	97.29	97.28	96.92	98.0	98.3	97.7	94.18	96.74	95.22	97.65	97.2	97.1	96.42
<b>Apr</b>	97.72	97.69	97.44	98.0	98.4	97.9	94.77	97.10	96.55	97.91	97.5	97.9	97.13
<b>May</b>	98.05	98.08	97.78	98.6	98.8	98.1	96.62	97.54	97.09	98.26	97.7	98.0	97.99
<b>Jun</b>	98.05	98.09	97.69	98.8	98.5	98.1	96.95	97.32	97.25	98.35	98.2	98.2	98.62
<b>Jul</b>	97.88	97.92	96.67	99.0	98.2	98.5	96.69	95.43	96.55	98.17	97.8	98.0	97.36
<b>Aug</b>	98.05	98.06	98.29	99.0	97.8	98.6	96.62	95.14	97.01	98.35	98.4	97.8	97.84
<b>Sep</b>	98.22	98.23	98.20	98.3	98.6	98.3	96.82	97.18	97.17	98.43	98.5	98.3	98.86
<b>Oct</b>	98.56	98.57	98.71	98.8	99.0	98.5	97.15	97.90	98.18	98.78	98.6	98.6	99.88
<b>Nov</b>	98.48	98.53	98.54	98.6	98.7	98.1	97.54	97.98	98.42	98.78	98.8	98.8	100.28
<b>Dec</b>	98.90	98.92	98.20	98.6	98.4	99.2	97.74	98.49	98.34	98.95	98.9	99.1	100.51
<b>Monthly Index - 2005</b>													
<b>Jan</b>	98.31	98.42	96.92	99.2	98.2	98.6	97.54	98.70	97.40	98.35	97.9	98.1	98.23
<b>Feb</b>	98.65	98.73	99.06	99.2	98.8	99.0	98.14	97.03	97.64	99.04	98.8	98.0	97.84
<b>Mar</b>	99.32	99.32	99.65	99.1	99.6	99.3	98.73	99.50	98.49	99.73	99.0	99.2	98.70
<b>Apr</b>	99.75	99.73	99.82	99.4	100.1	99.3	99.19	100.30	99.90	99.91	99.6	100.0	99.80
<b>May</b>	100.00	100.00	99.99	99.5	100.0	99.7	99.39	100.67	100.05	99.91	99.8	100.3	100.04
<b>Jun</b>	100.08	100.08	100.33	100.1	100.2	99.9	100.05	100.45	100.36	100.08	100.1	100.3	100.12
<b>Jul</b>	100.00	100.02	99.31	100.4	100.0	100.3	100.45	99.14	99.74	99.91	100.0	100.1	98.62
<b>Aug</b>	100.25	100.26	101.10	100.4	100.1	100.5	100.71	98.56	100.21	100.34	100.5	99.9	99.33
<b>Sep</b>	100.76	100.71	101.10	100.3	100.9	100.8	101.57	100.88	100.83	100.77	101.2	100.5	100.98
<b>Oct</b>	101.02	100.95	100.93	101.2	100.9	100.8	101.50	101.54	101.61	100.77	101.2	101.2	102.09
<b>Nov</b>	100.76	100.75	100.85	100.8	100.5	100.3	101.43	101.32	101.77	100.51	101.0	101.2	102.32
<b>Dec</b>	101.10	101.03	100.93	100.5	100.6	101.3	101.30	101.90	102.00	100.69	100.8	101.2	101.93
<b>Monthly Index - 2006</b>													
<b>Jan</b>	100.66	100.64	99.60	101.6	100.2	100.7	102.08	101.67	101.53	100.60	100.3	100.3	100.22
<b>Feb</b>	100.94	100.93	101.88	101.6	100.9	101.1	102.60	100.07	101.60	100.99	101.5	100.2	100.13
<b>Mar</b>	101.51	101.40	101.81	101.5	101.4	101.2	102.71	102.82	102.32	101.44	101.8	101.4	101.31
<b>Apr</b>	102.19	102.06	102.38	101.7	101.9	101.6	103.44	103.84	103.80	101.89	102.3	102.3	102.34
<b>May</b>	102.46	102.41	102.74	102.3	102.1	101.8	104.00	103.96	104.17	102.32	102.8	102.6	102.54
<b>Jun</b>	102.54	102.52	102.82	102.4	102.3	101.9	104.48	103.90	104.33	102.32	103.0	102.7	102.75
<b>Jul</b>	102.41	102.42	101.72	102.8	102.0	102.4	104.94	103.02	103.76	102.13	102.9	102.4	101.42
<b>Aug</b>	102.51p	102.59p	103.49	103.0	102.0	102.3	105.70	101.96	103.99	102.46	103.7	102.2	102.04
<b>Sep</b>													
<b>Oct</b>													
<b>Nov</b>													
<b>Dec</b>													

p provisional

TABLE I  
**HARMONIZED INDICES OF CONSUMER PRICES**  
**2005 = 100**  
INDEX NUMBERS

LV	LT	LU	HU	MT	NL	AT	PL	PT	SI	SK	FI	SE	UK	
<b>Annual Average Index</b>														
88.10	96.29	93.36	90.50	94.95	97.18	96.06	94.5	95.52	94.16	90.52	99.10	98.18	96.7	<b>2003</b>
93.55	97.41	96.37	96.63	97.53	98.52	97.94	97.9	97.92	97.60	97.28	99.24	99.18	98.0	<b>2004</b>
100.00	100.00	100.00	100.00	100.00	100.00	100.00	100.0	100.00	100.00	100.00	100.00	100.00	100.0	<b>2005</b>
<b>Monthly Index - 2004</b>														
90.36	95.77	94.02	94.41	94.26	97.33	96.80	95.8	96.40	95.58	96.09	99.01	98.36	97.0	<b>Jan</b>
90.92	95.61	95.24	95.47	94.33	97.89	97.23	95.9	96.24	95.75	96.73	99.45	98.18	97.2	<b>Feb</b>
91.82	96.09	95.32	95.97	94.72	98.69	97.58	96.2	96.48	96.32	96.95	99.01	99.06	97.4	<b>Mar</b>
92.37	96.41	95.81	96.25	98.70	99.01	97.49	96.9	97.42	96.94	96.95	99.01	99.32	97.8	<b>Apr</b>
93.55	97.93	96.29	97.12	98.86	99.18	97.84	98.0	98.20	97.79	97.27	99.19	99.67	98.1	<b>May</b>
94.10	98.01	96.70	97.17	99.17	98.45	98.02	98.6	99.37	98.24	97.48	99.10	99.15	98.1	<b>Jun</b>
94.31	97.93	95.89	97.17	99.64	98.13	97.75	98.5	98.51	98.75	97.65	98.84	98.97	97.8	<b>Jul</b>
94.24	97.61	96.94	96.85	99.17	98.29	98.10	98.2	98.12	98.47	97.54	99.10	98.88	98.1	<b>Aug</b>
94.66	98.17	97.10	96.94	99.64	99.10	98.02	98.5	98.04	98.07	97.65	99.53	99.67	98.2	<b>Sep</b>
95.00	98.33	97.59	97.40	99.64	99.26	98.54	99.1	98.51	98.18	97.81	99.88	100.11	98.4	<b>Oct</b>
95.49	98.57	97.92	97.45	95.66	98.85	98.71	99.4	98.82	98.75	97.70	99.36	99.41	98.6	<b>Nov</b>
95.77	98.49	97.67	97.40	96.60	98.05	99.15	99.4	98.90	98.30	97.54	99.36	99.41	99.1	<b>Dec</b>
<b>Monthly Index - 2005</b>														
96.39	98.49	96.70	98.14	96.05	98.53	99.15	99.4	98.35	97.79	99.20	98.84	98.88	98.6	<b>Jan</b>
97.29	98.65	98.32	98.69	96.67	99.34	99.50	99.4	98.27	98.47	99.31	99.45	99.32	98.8	<b>Feb</b>
97.85	99.21	98.65	99.15	97.14	100.14	99.93	99.5	98.67	99.48	99.31	99.88	99.58	99.3	<b>Mar</b>
98.89	99.53	99.38	99.88	100.65	100.30	99.76	99.9	99.37	99.54	99.53	100.15	99.76	99.7	<b>Apr</b>
99.65	99.77	99.86	100.48	101.27	100.22	99.76	100.1	99.92	99.88	99.63	99.80	99.85	100.0	<b>May</b>
100.27	99.93	99.78	100.76	101.27	99.90	100.02	100.0	99.99	99.93	100.01	100.06	99.93	100.0	<b>Jun</b>
100.27	99.77	99.70	100.67	101.35	99.58	99.76	100.0	100.38	100.72	99.69	99.71	99.67	100.1	<b>Jul</b>
100.13	99.85	101.08	100.21	101.66	99.90	99.93	100.0	100.54	100.22	99.63	100.06	99.93	100.4	<b>Aug</b>
101.66	100.65	101.65	100.39	101.66	100.78	100.55	100.4	100.70	101.18	99.90	100.67	100.72	100.6	<b>Sep</b>
102.35	101.30	102.46	100.44	102.60	100.78	100.55	100.7	101.09	101.35	101.24	100.67	100.98	100.7	<b>Oct</b>
102.70	101.38	101.41	100.62	99.79	100.46	100.37	100.5	101.32	100.78	101.24	100.32	100.63	100.7	<b>Nov</b>
102.56	101.46	101.00	100.58	99.87	100.06	100.72	100.2	101.40	100.67	101.30	100.41	100.72	101.0	<b>Dec</b>
<b>Monthly Index - 2006</b>														
103.67	101.98	100.63	100.55	98.31	100.28	100.66	100.3	100.95	100.32	103.23	100.00	100.01	100.5	<b>Jan</b>
104.09	102.03	102.13	100.92	98.93	100.78	100.99	100.3	101.15	100.70	103.56	100.77	100.37	100.9	<b>Feb</b>
104.29	102.24	102.31	101.51	100.00	101.58	101.26	100.4	101.65	101.43	103.57	101.04	101.03	101.1	<b>Mar</b>
104.96	102.94	102.81	102.27	104.16	102.06	101.84	101.1	102.23	102.34	103.90	101.61	101.58	101.7	<b>Apr</b>
106.69	103.39	103.43	103.37	104.83	102.02	101.86	101.6	102.79	103.27	104.41	101.52	101.78	102.2	<b>May</b>
106.58	103.66	103.70	103.66	104.57	101.68	101.88	101.5	102.74	102.96	104.55	101.54	101.78	102.5	<b>Jun</b>
107.22	104.18	103.08	103.85	104.96	101.32r	101.72	101.4	102.61	102.66	104.68	101.07	101.44	102.5	<b>Jul</b>
106.96	104.12	104.23	104.91	104.66	101.81p	102.03p	101.7	102.53	103.35	104.57	101.37	101.48	102.9	<b>Aug</b>
														<b>Sep</b>
														<b>Oct</b>
														<b>Nov</b>
														<b>Dec</b>

p provisional    r revised

TABLE II  
**HARMONIZED INDICES OF CONSUMER PRICES**  
**RATES OF CHANGE (%)**

	Euro area	EICP	BE	CZ	DK	DE	EE	EL	ES	FR	IE	IT	CY
<b>Annual Average Rate of Change</b>													
<b>2003/12</b>	2.1	2.0	1.5	-0.1	2.0	1.0	1.4	3.4	3.1	2.2	4.0	2.8	4.0
<b>2004/12</b>	2.1	2.0	1.9	2.6	0.9	1.8	3.0	3.0	3.1	2.3	2.3	2.3	1.9
<b>2005/12</b>	2.2	2.2	2.5	1.6	1.7	1.9	4.1	3.5	3.4	1.9	2.2	2.2	2.0
<b>2006/8</b>	2.4p	2.3p	2.6	2.4	2.0	2.1	4.4	3.5	3.9	2.1	2.7	2.3	2.3
<b>Annual Rate of Change - 2004</b>													
<b>Jan</b>	1.9	1.8	1.4	2.0	0.9	1.1	0.6	3.1	2.3	2.2	2.2	2.1	1.6
<b>Feb</b>	1.6	1.5	1.2	2.0	0.6	0.8	0.6	2.6	2.2	1.9	2.2	2.5	1.4
<b>Mar</b>	1.7	1.5	1.0	2.2	0.4	1.1	0.7	2.9	2.2	1.9	1.9	2.3	0.1
<b>Apr</b>	2.0	1.8	1.7	2.0	0.5	1.7	1.5	3.1	2.7	2.4	1.7	2.3	0.1
<b>May</b>	2.5	2.3	2.4	2.6	1.1	2.1	3.7	3.1	3.4	2.8	2.1	2.3	1.2
<b>Jun</b>	2.4	2.3	2.0	2.7	0.8	2.0	4.4	3.0	3.5	2.7	2.5	2.4	2.4
<b>Jul</b>	2.3	2.2	2.1	3.0	1.1	2.1	4.0	3.1	3.3	2.6	2.5	2.3	2.9
<b>Aug</b>	2.3	2.1	2.0	3.1	0.8	2.1	3.9	2.8	3.3	2.5	2.5	2.4	2.8
<b>Sep</b>	2.1	2.0	1.8	2.8	0.9	2.0	3.8	2.9	3.2	2.2	2.4	2.2	1.8
<b>Oct</b>	2.4	2.2	2.7	3.1	1.5	2.3	4.0	3.3	3.6	2.3	2.5	2.1	2.0
<b>Nov</b>	2.2	2.1	2.3	2.6	1.0	2.0	4.4	3.2	3.5	2.2	2.7	2.1	2.6
<b>Dec</b>	2.4	2.2	1.9	2.5	0.9	2.3	4.8	3.1	3.3	2.3	2.4	2.4	3.9
<b>Annual Rate of Change - 2005</b>													
<b>Jan</b>	1.9	2.0	2.0	1.5	0.8	1.6	4.2	4.2	3.1	1.6	2.1	2.0	2.8
<b>Feb</b>	2.1	2.1	2.3	1.4	1.0	1.9	4.6	3.2	3.3	1.9	2.1	2.0	2.4
<b>Mar</b>	2.1	2.1	2.8	1.1	1.3	1.6	4.8	2.9	3.4	2.1	1.9	2.2	2.4
<b>Apr</b>	2.1	2.1	2.4	1.4	1.7	1.4	4.7	3.3	3.5	2.0	2.2	2.1	2.7
<b>May</b>	2.0	2.0	2.3	0.9	1.2	1.6	2.9	3.2	3.0	1.7	2.1	2.3	2.1
<b>Jun</b>	2.1	2.0	2.7	1.3	1.7	1.8	3.2	3.2	3.2	1.8	1.9	2.1	1.5
<b>Jul</b>	2.2	2.1	2.7	1.4	1.8	1.8	3.9	3.9	3.3	1.8	2.2	2.1	1.3
<b>Aug</b>	2.2	2.2	2.9	1.4	2.4	1.9	4.2	3.6	3.3	2.0	2.1	2.1	1.5
<b>Sep</b>	2.6	2.5	3.0	2.0	2.3	2.5	4.9	3.8	3.8	2.4	2.7	2.2	2.1
<b>Oct</b>	2.5	2.4	2.2	2.4	1.9	2.3	4.5	3.7	3.5	2.0	2.6	2.6	2.2
<b>Nov</b>	2.3	2.3	2.3	2.2	1.8	2.2	4.0	3.4	3.4	1.8	2.2	2.4	2.0
<b>Dec</b>	2.2	2.1	2.8	1.9	2.2	2.1	3.6	3.5	3.7	1.8	1.9	2.1	1.4
<b>Annual Rate of Change - 2006</b>													
<b>Jan</b>	2.4	2.3	2.8	2.4	2.0	2.1	4.7	3.0	4.2	2.3	2.5	2.2	2.0
<b>Feb</b>	2.3	2.2	2.8	2.4	2.1	2.1	4.5	3.1	4.1	2.0	2.7	2.2	2.3
<b>Mar</b>	2.2	2.1	2.2	2.4	1.8	1.9	4.0	3.3	3.9	1.7	2.8	2.2	2.6
<b>Apr</b>	2.4	2.3	2.6	2.3	1.8	2.3	4.3	3.5	3.9	2.0	2.7	2.3	2.5
<b>May</b>	2.5	2.4	2.8	2.8	2.1	2.1	4.6	3.3	4.1	2.4	3.0	2.3	2.5
<b>Jun</b>	2.5	2.4	2.5	2.3	2.1	2.0	4.4	3.4	4.0	2.2	2.9	2.4	2.6
<b>Jul</b>	2.4	2.4	2.4	2.4	2.0	2.1	4.5	3.9	4.0	2.2	2.9	2.3	2.8
<b>Aug</b>	2.3p	2.3p	2.4	2.6	1.9	1.8	5.0	3.4	3.8	2.1	3.2	2.3	2.7
<b>Sep</b>													
<b>Oct</b>													
<b>Nov</b>													
<b>Dec</b>													

p provisional

TABLE II  
HARMONIZED INDICES OF CONSUMER PRICES  
RATES OF CHANGE (%)

LV	LT	LU	HU	MT	NL	AT	PL	PT	SI	SK	FI	SE	UK	
<b>Annual Average Rate of Change</b>														
2.9	-1.1	2.5	4.7	1.9	2.2	1.3	0.7	3.3	5.7	8.4	1.3	2.3	1.4	2003/12
6.2	1.2	3.2	6.8	2.7	1.4	2.0	3.6	2.5	3.7	7.5	0.1	1.0	1.3	2004/12
6.9	2.7	3.8	3.5	2.5	1.5	2.1	2.2	2.1	2.5	2.8	0.8	0.8	2.1	2005/12
7.0	3.4	3.8	3.0	3.1	1.7p	1.9p	1.3	2.6	2.7	4.1	1.2	1.4	2.2	2006/8
<b>Annual Rate of Change - 2004</b>														
4.0	-1.2	2.3	6.7	2.8	1.5	1.2	1.8	2.2	4.0	8.3	0.8	1.3	1.4	Jan
4.3	-1.2	2.5	7.0	2.5	1.3	1.5	1.8	2.1	3.6	8.4	0.4	0.1	1.3	Feb
4.7	-0.9	2.0	6.6	2.1	1.2	1.5	1.8	2.2	3.5	8.0	-0.4	0.4	1.1	Mar
5.0	-0.7	2.7	7.0	3.6	1.5	1.5	2.3	2.4	3.6	7.9	-0.4	1.0	1.1	Apr
6.1	1.1	3.4	7.8	3.1	1.7	2.1	3.5	2.5	3.9	8.2	-0.1	1.5	1.5	May
6.1	1.1	3.8	7.5	3.2	1.5	2.3	4.2	3.7	3.9	8.2	-0.1	1.2	1.6	Jun
6.7	1.7	3.8	7.2	3.1	1.2	2.1	4.7	2.9	3.7	8.4	0.2	1.2	1.4	Jul
7.8	2.2	3.6	7.2	2.5	1.2	2.2	4.8	2.4	3.7	7.1	0.3	1.1	1.3	Aug
7.7	3.1	3.1	6.7	3.2	1.2	1.8	4.6	2.1	3.4	6.6	0.2	1.1	1.1	Sep
7.2	3.1	4.1	6.4	2.7	1.5	2.4	4.6	2.4	3.4	6.6	0.6	1.5	1.2	Oct
7.2	2.9	4.0	5.8	1.9	1.5	2.3	4.5	2.6	3.8	6.3	0.2	1.1	1.5	Nov
7.4	2.8	3.5	5.5	1.9	1.2	2.5	4.4	2.6	3.3	5.8	0.1	0.9	1.7	Dec
<b>Annual Rate of Change - 2005</b>														
6.7	2.8	2.9	4.0	1.9	1.2	2.4	3.8	2.0	2.3	3.2	-0.2	0.5	1.6	Jan
7.0	3.2	3.2	3.4	2.5	1.5	2.3	3.6	2.1	2.8	2.7	0.0	1.2	1.7	Feb
6.6	3.2	3.5	3.3	2.6	1.5	2.4	3.4	2.3	3.3	2.4	0.9	0.5	1.9	Mar
7.1	3.2	3.7	3.8	2.0	1.3	2.3	3.1	2.0	2.7	2.7	1.2	0.4	1.9	Apr
6.5	1.9	3.7	3.5	2.4	1.0	2.0	2.1	1.8	2.1	2.4	0.6	0.2	1.9	May
6.6	2.0	3.2	3.7	2.1	1.5	2.0	1.4	0.6	1.7	2.6	1.0	0.8	2.0	Jun
6.3	1.9	4.0	3.6	1.7	1.5	2.1	1.5	1.9	2.0	2.1	0.9	0.7	2.3	Jul
6.3	2.3	4.3	3.5	2.5	1.6	1.9	1.8	2.5	1.8	2.1	1.0	1.1	2.4	Aug
7.4	2.5	4.7	3.6	2.0	1.7	2.6	1.9	2.7	3.2	2.3	1.1	1.1	2.5	Sep
7.7	3.0	5.0	3.1	3.0	1.5	2.0	1.6	2.6	3.2	3.5	0.8	0.9	2.3	Oct
7.6	2.9	3.6	3.3	4.3	1.6	1.7	1.1	2.5	2.1	3.6	1.0	1.2	2.1	Nov
7.1	3.0	3.4	3.3	3.4	2.0	1.6	0.8	2.5	2.4	3.9	1.1	1.3	1.9	Dec
<b>Annual Rate of Change - 2006</b>														
7.6	3.5	4.1	2.5	2.4	1.8	1.5	0.9	2.6	2.6	4.1	1.2	1.1	1.9	Jan
7.0	3.4	3.9	2.3	2.3	1.4	1.5	0.9	2.9	2.3	4.3	1.3	1.1	2.0	Feb
6.6	3.1	3.7	2.4	2.9	1.4	1.3	0.9	3.0	2.0	4.3	1.2	1.5	1.8	Mar
6.1	3.4	3.5	2.4	3.5	1.8	2.1	1.2	2.9	2.8	4.4	1.5	1.8	2.0	Apr
7.1	3.6	3.6	2.9	3.5	1.8	2.1	1.5	2.9	3.4	4.8	1.7	1.9	2.2	May
6.3	3.7	3.9	2.9	3.3	1.8	1.9	1.5	2.8	3.0	4.5	1.5	1.9	2.5	Jun
6.9	4.4	3.4	3.2	3.6	1.7r	2.0	1.4	2.2	1.9	5.0	1.4	1.8	2.4	Jul
6.8	4.3	3.1	4.7	3.0	1.9p	2.1p	1.7	2.0	3.1	5.0	1.3	1.6	2.5	Aug
														Sep
														Oct
														Nov
														Dec

p provisional r revised

TABLE III  
HARMONIZED INDICES OF CONSUMER  
PRICES  
INDEX NUMBERS 2005 = 100

	EEA	IS	NO	CH**
<b>Annual Average Index</b>				
2003	95.97	96.41	97.9	98.0
2004	97.89	98.64	98.5	98.8
2005	100.00	100.00	100.0	100.0
<b>Monthly Index - 2004</b>				
Jan	96.52	97.17	97.7	97.9
Feb	96.71	96.79	97.9	97.9
Mar	97.29	97.56	98.4	98.1
Apr	97.69	97.94	98.6	99.0
May	98.08	98.63	98.7	99.2
Jun	98.10	99.17	98.7	99.4
Jul	97.92	98.86	98.6	98.3
Aug	98.06	98.79	98.3	98.7
Sep	98.23	99.17	98.7	98.7
Oct	98.57	99.71	99.0	99.6
Nov	98.54	99.79	99.0	99.7
Dec	98.92	100.10	98.8	99.6
<b>Monthly Index - 2005</b>				
Jan	98.42	99.71	98.7	99.1
Feb	98.73	99.56	98.7	99.3
Mar	99.32	99.94	99.2	99.6
Apr	99.73	99.48	99.7	100.4
May	100.00	99.17	100.1	100.3
Jun	100.08	99.56	100.3	100.0
Jul	100.02	99.40	99.9	99.5
Aug	100.26	99.17	100.1	99.6
Sep	100.71	100.79	100.8	100.1
Oct	100.95	101.25	100.8	100.9
Nov	100.75	100.87	100.8	100.7
Dec	101.03	101.10	100.8	100.6
<b>Monthly Index - 2006</b>				
Jan	100.63	101.01	100.5	100.4
Feb	100.93	100.78	101.4	100.7
Mar	101.40	101.93	101.6	100.6
Apr	102.06	102.72	102.5	101.4
May	102.42	103.92	102.6	101.6
Jun	102.52	105.27	102.4	101.6
Jul	102.42	105.71	102.2	100.9
Aug	102.59p	106.17	102.2	101.1
Sep				
Oct				
Nov				
Dec				

TABLE IV  
HARMONIZED INDICES OF CONSUMER  
PRICES  
RATES OF CHANGE (%)

	EEA	IS	NO	CH**	
<b>Annual Average Rate of Change</b>					
2.0	1.4	2.0	0.6		2003/12
2.0	2.3	0.6	0.8		2004/12
2.2	1.4	1.5	1.2		2005/12
2.3p	3.1	2.2	1.3		2006/8
<b>Annual Rate of Change - 2004</b>					
1.7	1.5	-1.5	0.2		Jan
1.5	1.4	-1.5	0.1		Feb
1.5	1.0	-0.4	-0.1		Mar
1.8	1.5	0.5	0.6		Apr
2.3	2.3	1.1	0.9		May
2.3	2.8	1.3	1.1		Jun
2.2	2.7	1.6	0.8		Jul
2.1	3.1	1.1	1.0		Aug
2.0	2.7	1.1	0.8		Sep
2.2	2.9	1.4	1.3		Oct
2.1	2.9	1.4	1.5		Nov
2.2	2.9	1.2	1.4		Dec
<b>Annual Rate of Change - 2005</b>					
2.0	2.6	1.0	1.2		Jan
2.1	2.9	0.8	1.4		Feb
2.1	2.4	0.8	1.5		Mar
2.1	1.6	1.1	1.4		Apr
2.0	0.5	1.4	1.1		May
2.0	0.4	1.6	0.6		Jun
2.1	0.5	1.3	1.2		Jul
2.2	0.4	1.8	0.9		Aug
2.5	1.6	2.1	1.4		Sep
2.4	1.5	1.8	1.3		Oct
2.2	1.1	1.8	1.0		Nov
2.1	1.0	2.0	1.0		Dec
<b>Annual Rate of Change - 2006</b>					
2.2	1.3	1.8	1.3		Jan
2.2	1.2	2.7	1.4		Feb
2.1	2.0	2.4	1.0		Mar
2.3	3.3	2.8	1.1		Apr
2.4	4.8	2.5	1.4		May
2.4	5.7	2.1	1.6		Jun
2.4	6.3	2.3	1.4		Jul
2.3p	7.1	2.1	1.5		Aug
					Sep
					Oct
					Nov
					Dec

p provisional \*\* national CPI

TABLE V

## MAIN CATEGORIES OF HARMONIZED INDICES OF CONSUMER PRICES

August 2006 / August 2005

ANNUAL RATES OF CHANGE (%)

	00.	01.	02.	03.	04.	05.	06.	07.	08.	09.	10.	11.	12.
<b>Euro area</b>	2.3p	2.9p	2.8p	-0.1p	4.8p	0.9p	1.5p	3.5p	-3.9p	0.0p	2.7p	2.5p	2.2p
<b>EICP</b>	2.3p	3.0p	2.7p	-0.9p	5.7p	0.5p	1.7p	3.3p	-3.1p	-0.2p	3.3p	2.6p	2.7p
<b>BE</b>	2.4	2.9	1.6	0.1	4.1	1.1	2.4	2.0	-1.8	1.2	1.6	4.1	2.7
<b>CZ</b>	2.6	1.7	1.4	-6.6	9.4	-1.5	5.6	2.8	0.7	0.9	4.0	3.6	2.4
<b>DK</b>	1.9	3.2	0.5	-2.2	3.9	1.0	-1.2	3.4	-1.8	1.5	3.1	2.8	1.2
<b>DE</b>	1.8	2.6	4.0	-0.7	3.8	-0.2	1.0	3.1	-3.6	-0.4	2.5	1.1	0.9
<b>EE</b>	5.0	6.1	3.7	2.5	10.3	2.1	3.4	6.2	-5.3	6.2	3.5	3.6	4.3
<b>EL</b>	3.4	4.3	4.2	0.8	8.4	2.5	2.4	4.1	0.2	1.1	3.8	2.5	3.2
<b>ES</b>	3.8	4.6	1.7	1.0	6.4	2.7	1.4	4.9	-1.2	0.5	4.0	4.4	4.2
<b>FR</b>	2.1	2.4	0.3	-0.1	4.7	0.6	3.6	3.5	-7.0	-0.6	3.2	2.4	2.9
<b>IE</b>	3.2	1.5	0.3	-3.6	7.6	-1.2	4.2	5.5	-0.2	2.5	4.7	4.3	2.9
<b>IT</b>	2.3	2.2	4.8	0.4	6.2	1.8	-0.7	3.3	-3.8	0.9	3.0	2.0	2.9
<b>CY</b>	2.7	4.9	3.7	-3.3	6.5	0.0	3.2	6.7	-0.6	0.3	5.3	0.3	3.4
<b>LV</b>	6.8	8.7	8.9	-1.4	14.6	2.5	5.6	6.4	-7.9	2.5	8.6	11.4	6.5
<b>LT</b>	4.3	7.3	0.2	-2.9	7.3	0.8	7.8	5.9	-0.2	1.1	-1.0	3.6	5.5
<b>LU</b>	3.1	2.5	3.5	0.2	6.3	1.6	3.1	4.9	-2.8	1.2	5.0	2.5	3.2
<b>HU</b>	4.7	8.8	4.1	-0.8	10.2	-1.5	3.2	4.4	-4.4	2.5	7.4	4.3	2.5
<b>MT</b>	3.0	2.2	0.6	5.0	12.3	1.6	4.2	5.9	0.1	-1.5	2.7	1.2	2.9
<b>NL</b>	1.9p	2.1p	1.2p	3.9p	4.9p	0.1p	3.5p	2.0p	-3.0p	1.0p	-16.0p	2.2p	0.0p
<b>AT</b>	2.1p	2.7p	0.4p	-2.1p	6.3p	0.2p	1.2p	3.6p	-3.6p	-1.7p	7.1p	1.9p	2.4p
<b>PL</b>	1.7	1.6	1.4	-7.2	4.6	0.1	0.9	2.8	0.4	-1.8	1.6	1.6	4.0
<b>PT</b>	2.0	3.1	9.1	-16.1	3.8	1.0	1.2	5.4	-0.9	0.5	5.6	1.0	3.4
<b>SI</b>	3.1	4.0	3.3	-0.2	5.7	4.1	-0.7	3.1	-0.6	0.9	2.8	4.4	4.2
<b>SK</b>	5.0	2.3	3.0	-0.2	13.6	0.0	11.0	1.6	2.0	1.9	5.9	2.8	4.0
<b>FI</b>	1.3	2.0	1.2	-1.1	3.2	-0.4	-0.3	2.6	-4.6	-0.2	2.5	1.8	2.4
<b>SE</b>	1.6	1.6	0.6	2.3	4.9	-2.9	1.0	0.6	-6.3	0.1	3.2	2.6	4.0
<b>UK</b>	2.5	3.4	3.3	-3.9	10.5	-0.5	2.6	2.4	-0.7	-0.9	4.7	3.0	3.9
<b>EEA</b>	2.3p	3.0p	2.7p	-1.0p	5.7p	0.5p	1.7p	3.3p	-3.0p	-0.2p	3.3p	2.6p	2.7p
<b>IS</b>	7.1	12.8	3.5	4.2	6.5	3.6	4.6	11.0	3.8	3.1	4.3	8.2	4.9
<b>NO</b>	2.1	1.2	2.3	-6.7	8.5	-1.9	2.6	4.0	0.8	0.7	2.2	3.3	-1.2

p provisional

**COICOP/HICP Code**

- |            |   |            |                                  |
|------------|---|------------|----------------------------------|
| <b>00.</b> | HICP (all-items index)  | <b>06.</b> | Health                           |
| <b>01.</b> | Food and non-alcoholic beverages                                      | <b>07.</b> | Transports                       |
| <b>02.</b> | Alcoholic beverages and tobacco                                       | <b>08.</b> | Communications                   |
| <b>03.</b> | Clothing and footwear   | <b>09.</b> | Recreation and culture           |
| <b>04.</b> | Housing, water, electricity, gas and other fuels                      | <b>10.</b> | Education                        |
| <b>05.</b> | Furnishings, household equipment and routine maintenance of the house | <b>11.</b> | Restaurants and hotels           |
|            |   | <b>12.</b> | Miscellaneous goods and services |

## ***Further information:***

### **Data:**

[EUROSTAT Website/Economy and finance/Prices/Harmonized indices of consumer prices/Harmonized indices of consumer prices - Monthly data \(index\)](#)

---

### **Journalists can contact the media support service:**

Bech Building Office A4/125  
L - 2920 Luxembourg

Tel. (352) 4301 33408

Fax (352) 4301 35349

E-mail: [eurostat-mediasupport@ec.europa.eu](mailto:eurostat-mediasupport@ec.europa.eu)

### **European Statistical Data Support:**

Eurostat set up with the members of the 'European statistical system' a network of support centres, which will exist in nearly all Member States as well as in some EFTA countries.

Their mission is to provide help and guidance to Internet users of European statistical data.

Contact details for this support network can be found on our Internet site: <http://ec.europa.eu.int/eurostat/>

---

A list of worldwide sales outlets is available at the:

### **Office for Official Publications of the European Communities.**

2, rue Mercier  
L - 2985 Luxembourg

URL: <http://publications.europa.eu>

E-mail: [info-info-opoce@ec.europa.eu](mailto:info-info-opoce@ec.europa.eu)

---