

Statistik

kurz gefasst

WIRTSCHAFT UND FINANZEN

7/2006

Preise

Autor

João LIBÓRIO

Contents

| | |
|--------------------------------------------|---|
| Price Indices..... | 2 |
| Rates of Change..... | 4 |
| EEA Index Numbers and Rates of Change..... | 6 |
| COICOP/HICP Main categories..... | 7 |

Harmonisierte Verbraucherpreisindizes April 2006

Die jährliche Inflationsrate der **Eurozone**¹, gemessen anhand des Verbraucherpreisindex der Europäischen Währungsunion (VPI-EWU), lag im April 2006 bei 2,4%, gegenüber 2,2% im März 2006. Ein Jahr zuvor hatte sie 2,1% betragen.

Die jährliche Inflationsrate der **EU**, gemessen anhand des Europäischen Verbraucherpreisindex (EVPI)² lag im April 2006 bei 2,3% gegenüber 2,1% im März 2006. Ein Jahr zuvor hatte sie bei 2,1% gelegen.

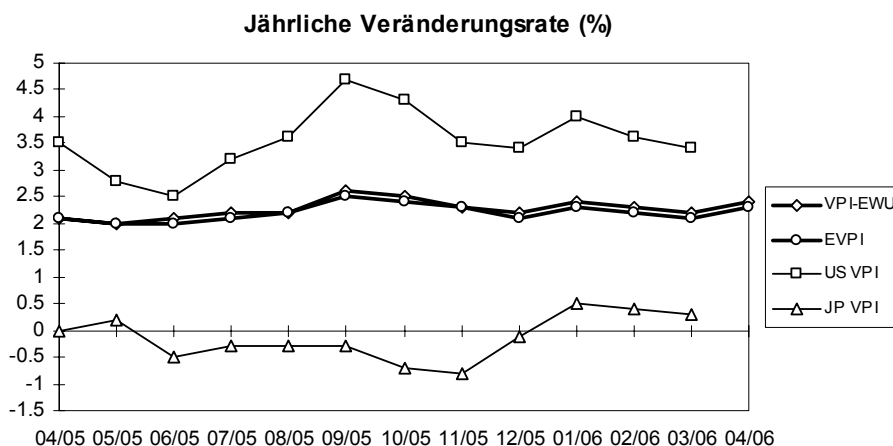
Die jährliche Inflationsrate des **EWR**, gemessen anhand des Verbraucherpreisindex des Europäischen Wirtschaftsraums (EWRVPI), lag im April 2006 bei 2,3%.

Die EU-Mitgliedstaaten mit den höchsten Inflationsraten waren im April 2006 **Lettland** (6,1%), die **Slowakei** (4,4%), **Estland** (4,3%) und **Spanien** (3,9%), und die mit den niedrigsten Raten waren **Polen** (1,2%), **Finnland** (1,5%), **Dänemark**, die **Niederlande** und **Schweden** (jeweils 1,8%).

Für die **USA**³ und **Japan**³ lagen zum Zeitpunkt der Veröffentlichung keine Daten für April vor.

Die folgende Graphik zeigt die jährlichen Inflationsraten für die **Eurozone**¹, die **EU** sowie die letzten verfügbaren Raten für die **USA**³ und für **Japan**³.

Methodologische Anmerkungen sind über die Eurostat-Internetadresse unter Publikationen/Methoden und Nomenklaturen/Harmonisierte Verbraucherpreisindizes – [Ein kurzer Leitfaden für Datennutzer](#) (Veröffentlichungsdatum: 17/05/2004) verfügbar.



1 Die Eurozone besteht aus: Belgien, Deutschland, Griechenland, Spanien, Frankreich, Irland, Italien, Luxemburg, den Niederlanden, Österreich, Portugal und Finnland.

2 Der EVPI (EVPI = „Europäischer Verbraucherpreisindex“ nach der Verordnung des Rates (EG) Nr. 2494/95 vom 23. Oktober 1995) ist das offizielle Aggregat der EU. Er erfasst 15 Mitgliedstaaten bis April 2004 und 25 Mitgliedstaaten ab Mai 2004. Die zehn neuen Mitgliedstaaten sind ab Mai 2004 anhand einer Kettenindexformel in den EVPI integriert.

3 Für die USA und Japan werden die nationalen VPIs ausgewiesen, die nicht direkt mit den HVPIs vergleichbar sind.



TABELLE I
HARMONISierter VERBRAUCHERPREISINDEX
INDEXZAHLEN 2005 = 100

| | Euro- zone | EVPI | BE | CZ | DK | DE | EE | EL | ES | FR | IE | IT | CY |
|---------------------------------|---------------|---------|--------|-------|-------|-------|--------|--------|--------|--------|-------|-------|--------|
| Jahresdurchschnittsindex | | | | | | | | | | | | | |
| 2003 | 95.81 | 95.95 | 95.75 | 96.0 | 97.5 | 96.4 | 93.22 | 93.79 | 93.86 | 95.89 | 95.7 | 95.7 | 96.18 |
| 2004 | 97.86 | 97.88 | 97.53 | 98.4 | 98.3 | 98.1 | 96.05 | 96.63 | 96.73 | 98.14 | 97.9 | 97.8 | 98.00 |
| 2005 | 100.00 | 100.00 | 100.00 | 100.0 | 100.0 | 100.0 | 100.00 | 100.00 | 100.00 | 100.00 | 100.0 | 100.0 | 100.00 |
| Monatlicher Index - 2004 | | | | | | | | | | | | | |
| Jan | 96.45 | 96.51 | 95.05 | 97.7 | 97.4 | 97.0 | 93.65 | 94.71 | 94.44 | 96.79 | 95.9 | 96.2 | 95.55 |
| Feb | 96.62 | 96.69 | 96.84 | 97.8 | 97.8 | 97.2 | 93.85 | 94.05 | 94.52 | 97.22 | 96.8 | 96.1 | 95.55 |
| Mär | 97.29 | 97.28 | 96.92 | 98.0 | 98.3 | 97.7 | 94.18 | 96.74 | 95.22 | 97.65 | 97.2 | 97.1 | 96.42 |
| Apr | 97.72 | 97.69 | 97.44 | 98.0 | 98.4 | 97.9 | 94.77 | 97.10 | 96.55 | 97.91 | 97.5 | 97.9 | 97.13 |
| Mai | 98.05 | 98.08 | 97.78 | 98.6 | 98.8 | 98.1 | 96.62 | 97.54 | 97.09 | 98.26 | 97.7 | 98.0 | 97.99 |
| Jun | 98.05 | 98.09 | 97.69 | 98.8 | 98.5 | 98.1 | 96.95 | 97.32 | 97.25 | 98.35 | 98.2 | 98.2 | 98.62 |
| Jul | 97.88 | 97.92 | 96.67 | 99.0 | 98.2 | 98.5 | 96.69 | 95.43 | 96.55 | 98.17 | 97.8 | 98.0 | 97.36 |
| Aug | 98.05 | 98.06 | 98.29 | 99.0 | 97.8 | 98.6 | 96.62 | 95.14 | 97.01 | 98.35 | 98.4 | 97.8 | 97.84 |
| Sep | 98.22 | 98.23 | 98.20 | 98.3 | 98.6 | 98.3 | 96.82 | 97.18 | 97.17 | 98.43 | 98.5 | 98.3 | 98.86 |
| Okt | 98.56 | 98.57 | 98.71 | 98.8 | 99.0 | 98.5 | 97.15 | 97.90 | 98.18 | 98.78 | 98.6 | 98.6 | 99.88 |
| Nov | 98.48 | 98.53 | 98.54 | 98.6 | 98.7 | 98.1 | 97.54 | 97.98 | 98.42 | 98.78 | 98.8 | 98.8 | 100.28 |
| Dez | 98.90 | 98.92 | 98.20 | 98.6 | 98.4 | 99.2 | 97.74 | 98.49 | 98.34 | 98.95 | 98.9 | 99.1 | 100.51 |
| Monatlicher Index - 2005 | | | | | | | | | | | | | |
| Jan | 98.31 | 98.42 | 96.92 | 99.2 | 98.2 | 98.6 | 97.54 | 98.70 | 97.40 | 98.35 | 97.9 | 98.1 | 98.23 |
| Feb | 98.65 | 98.73 | 99.06 | 99.2 | 98.8 | 99.0 | 98.14 | 97.03 | 97.64 | 99.04 | 98.8 | 98.0 | 97.84 |
| Mär | 99.32 | 99.32 | 99.65 | 99.1 | 99.6 | 99.3 | 98.73 | 99.50 | 98.49 | 99.73 | 99.0 | 99.2 | 98.70 |
| Apr | 99.75 | 99.73 | 99.82 | 99.4 | 100.1 | 99.3 | 99.19 | 100.30 | 99.90 | 99.91 | 99.6 | 100.0 | 99.80 |
| Mai | 100.00 | 100.00 | 99.99 | 99.5 | 100.0 | 99.7 | 99.39 | 100.67 | 100.05 | 99.91 | 99.8 | 100.3 | 100.04 |
| Jun | 100.08 | 100.08 | 100.33 | 100.1 | 100.2 | 99.9 | 100.05 | 100.45 | 100.36 | 100.08 | 100.1 | 100.3 | 100.12 |
| Jul | 100.00 | 100.02 | 99.31 | 100.4 | 100.0 | 100.3 | 100.45 | 99.14 | 99.74 | 99.91 | 100.0 | 100.1 | 98.62 |
| Aug | 100.25 | 100.26 | 101.10 | 100.4 | 100.1 | 100.5 | 100.71 | 98.56 | 100.21 | 100.34 | 100.5 | 99.9 | 99.33 |
| Sep | 100.76 | 100.71 | 101.10 | 100.3 | 100.9 | 100.8 | 101.57 | 100.88 | 100.83 | 100.77 | 101.2 | 100.5 | 100.98 |
| Okt | 101.02 | 100.95 | 100.93 | 101.2 | 100.9 | 100.8 | 101.50 | 101.54 | 101.61 | 100.77 | 101.2 | 101.2 | 102.09 |
| Nov | 100.76 | 100.75 | 100.85 | 100.8 | 100.5 | 100.3 | 101.43 | 101.32 | 101.77 | 100.51 | 101.0 | 101.2 | 102.32 |
| Dez | 101.10 | 101.03 | 100.93 | 100.5 | 100.6 | 101.3 | 101.30 | 101.90 | 102.00 | 100.69 | 100.8 | 101.2 | 101.93 |
| Monatlicher Index - 2006 | | | | | | | | | | | | | |
| Jan | 100.66 | 100.64 | 99.60 | 101.6 | 100.2 | 100.7 | 102.08 | 101.67 | 101.53 | 100.60 | 100.3 | 100.3 | 100.22 |
| Feb | 100.94 | 100.93 | 101.88 | 101.6 | 100.9 | 101.1 | 102.60 | 100.07 | 101.60 | 100.99 | 101.5 | 100.2 | 100.13 |
| Mär | 101.51 | 101.40 | 101.81 | 101.5 | 101.4 | 101.2 | 102.71 | 102.82 | 102.32 | 101.44 | 101.8 | 101.4 | 101.31 |
| Apr | 102.18p | 102.06p | 102.38 | 101.7 | 101.9 | 101.6 | 103.44 | 103.84 | 103.80 | 101.89 | 102.3 | 102.3 | 102.34 |
| Mai | | | | | | | | | | | | | |
| Jun | | | | | | | | | | | | | |
| Jul | | | | | | | | | | | | | |
| Aug | | | | | | | | | | | | | |
| Sep | | | | | | | | | | | | | |
| Okt | | | | | | | | | | | | | |
| Nov | | | | | | | | | | | | | |
| Dez | | | | | | | | | | | | | |

p vorläufig r revidiert : nicht verfügbar

TABELLE I
HARMONISIERTER VERBRAUCHERPREISINDEX
2005 = 100
INDEXZAHLEN

| LV | LT | LU | HU | MT | NL | AT | PL | PT | SI | SK | FI | SE | UK | |
|---------------------------------|--------|--------|--------|--------|---------|---------|-------|--------|--------|--------|--------|--------|-------|-------------|
| Jahresdurchschnittsindex | | | | | | | | | | | | | | |
| 88.10 | 96.29 | 93.36 | 90.50 | 94.95 | 97.18 | 96.06 | 94.5 | 95.52 | 94.16 | 90.52 | 99.10 | 98.18 | 96.7 | 2003 |
| 93.55 | 97.41 | 96.37 | 96.63 | 97.53 | 98.52 | 97.94 | 97.9 | 97.92 | 97.60 | 97.28 | 99.24 | 99.18 | 98.0 | 2004 |
| 100.00 | 100.00 | 100.00 | 100.00 | 100.00 | 100.00 | 100.00 | 100.0 | 100.00 | 100.00 | 100.00 | 100.00 | 100.00 | 100.0 | 2005 |
| Monatlicher Index - 2004 | | | | | | | | | | | | | | |
| 90.36 | 95.77 | 94.02 | 94.41 | 94.26 | 97.33 | 96.80 | 95.8 | 96.40 | 95.58 | 96.09 | 99.01 | 98.36 | 97.0 | Jan |
| 90.92 | 95.61 | 95.24 | 95.47 | 94.33 | 97.89 | 97.23 | 95.9 | 96.24 | 95.75 | 96.73 | 99.45 | 98.18 | 97.2 | Feb |
| 91.82 | 96.09 | 95.32 | 95.97 | 94.72 | 98.69 | 97.58 | 96.2 | 96.48 | 96.32 | 96.95 | 99.01 | 99.06 | 97.4 | Mär |
| 92.37 | 96.41 | 95.81 | 96.25 | 98.70 | 99.01 | 97.49 | 96.9 | 97.42 | 96.94 | 96.95 | 99.01 | 99.32 | 97.8 | Apr |
| 93.55 | 97.93 | 96.29 | 97.12 | 98.86 | 99.18 | 97.84 | 98.0 | 98.20 | 97.79 | 97.27 | 99.19 | 99.67 | 98.1 | Mai |
| 94.10 | 98.01 | 96.70 | 97.17 | 99.17 | 98.45 | 98.02 | 98.6 | 99.37 | 98.24 | 97.48 | 99.10 | 99.15 | 98.1 | Jun |
| 94.31 | 97.93 | 95.89 | 97.17 | 99.64 | 98.13 | 97.75 | 98.5 | 98.51 | 98.75 | 97.65 | 98.84 | 98.97 | 97.8 | Jul |
| 94.24 | 97.61 | 96.94 | 96.85 | 99.17 | 98.29 | 98.10 | 98.2 | 98.12 | 98.47 | 97.54 | 99.10 | 98.88 | 98.1 | Aug |
| 94.66 | 98.17 | 97.10 | 96.94 | 99.64 | 99.10 | 98.02 | 98.5 | 98.04 | 98.07 | 97.65 | 99.53 | 99.67 | 98.2 | Sep |
| 95.00 | 98.33 | 97.59 | 97.40 | 99.64 | 99.26 | 98.54 | 99.1 | 98.51 | 98.18 | 97.81 | 99.88 | 100.11 | 98.4 | Okt |
| 95.49 | 98.57 | 97.92 | 97.45 | 95.66 | 98.85 | 98.71 | 99.4 | 98.82 | 98.75 | 97.70 | 99.36 | 99.41 | 98.6 | Nov |
| 95.77 | 98.49 | 97.67 | 97.40 | 96.60 | 98.05 | 99.15 | 99.4 | 98.90 | 98.30 | 97.54 | 99.36 | 99.41 | 99.1 | Dez |
| Monatlicher Index - 2005 | | | | | | | | | | | | | | |
| 96.39 | 98.49 | 96.70 | 98.14 | 96.05 | 98.53 | 99.15 | 99.4 | 98.35 | 97.79 | 99.20 | 98.84 | 98.88 | 98.6 | Jan |
| 97.29 | 98.65 | 98.32 | 98.69 | 96.67 | 99.34 | 99.50 | 99.4 | 98.27 | 98.47 | 99.31 | 99.45 | 99.32 | 98.8 | Feb |
| 97.85 | 99.21 | 98.65 | 99.15 | 97.14 | 100.14 | 99.93 | 99.5 | 98.67 | 99.48 | 99.31 | 99.88 | 99.58 | 99.3 | Mär |
| 98.89 | 99.53 | 99.38 | 99.88 | 100.65 | 100.30 | 99.76 | 99.9 | 99.37 | 99.54 | 99.53 | 100.15 | 99.76 | 99.7 | Apr |
| 99.65 | 99.77 | 99.86 | 100.48 | 101.27 | 100.22 | 99.76 | 100.1 | 99.92 | 99.88 | 99.63 | 99.80 | 99.85 | 100.0 | Mai |
| 100.27 | 99.93 | 99.78 | 100.76 | 101.27 | 99.90 | 100.02 | 100.0 | 99.99 | 99.93 | 100.01 | 100.06 | 99.93 | 100.0 | Jun |
| 100.27 | 99.77 | 99.70 | 100.67 | 101.35 | 99.58 | 99.76 | 100.0 | 100.38 | 100.72 | 99.69 | 99.71 | 99.67 | 100.1 | Jul |
| 100.13 | 99.85 | 101.08 | 100.21 | 101.66 | 99.90 | 99.93 | 100.0 | 100.54 | 100.22 | 99.63 | 100.06 | 99.93 | 100.4 | Aug |
| 101.66 | 100.65 | 101.65 | 100.39 | 101.66 | 100.78 | 100.55 | 100.4 | 100.70 | 101.18 | 99.90 | 100.67 | 100.72 | 100.6 | Sep |
| 102.35 | 101.30 | 102.46 | 100.44 | 102.60 | 100.78 | 100.55 | 100.7 | 101.09 | 101.35 | 101.24 | 100.67 | 100.98 | 100.7 | Okt |
| 102.70 | 101.38 | 101.41 | 100.62 | 99.79 | 100.46 | 100.37 | 100.5 | 101.32 | 100.78 | 101.24 | 100.32 | 100.63 | 100.7 | Nov |
| 102.56 | 101.46 | 101.00 | 100.58 | 99.87 | 100.06 | 100.72 | 100.2 | 101.40 | 100.67 | 101.30 | 100.41 | 100.72 | 101.0 | Dez |
| Monatlicher Index - 2006 | | | | | | | | | | | | | | |
| 103.67 | 101.98 | 100.63 | 100.55 | 98.31 | 100.28 | 100.66 | 100.3 | 100.95 | 100.32 | 103.23 | 100.00 | 100.01 | 100.5 | Jan |
| 104.09 | 102.03 | 102.13 | 100.92 | 98.93 | 100.78 | 100.99 | 100.3 | 101.15 | 100.70 | 103.56 | 100.77 | 100.37 | 100.9 | Feb |
| 104.29 | 102.24 | 102.31 | 101.51 | 100.00 | 101.58 | 101.26 | 100.4 | 101.65 | 101.43 | 103.57 | 101.04 | 101.03 | 101.1 | Mär |
| 104.96 | 102.94 | 102.81 | 102.27 | 104.16 | 102.06p | 101.79p | 101.1 | 102.23 | 102.34 | 103.90 | 101.61 | 101.58 | 101.7 | Apr |
| | | | | | | | | | | | | | | Mai |
| | | | | | | | | | | | | | | Jun |
| | | | | | | | | | | | | | | Jul |
| | | | | | | | | | | | | | | Aug |
| | | | | | | | | | | | | | | Sep |
| | | | | | | | | | | | | | | Okt |
| | | | | | | | | | | | | | | Nov |
| | | | | | | | | | | | | | | Dez |

p vorläufig r revidiert : nicht verfügbar

TABELLE II
HARMONISIERTER VERBRAUCHERPREISINDEX
 VERÄNDERUNGSRATEN (%)

| | Euro- zone | EVPI | BE | CZ | DK | DE | EE | EL | ES | FR | IE | IT | CY |
|-----------------------------------------------------------|---------------|------|-----|------|-----|-----|-----|-----|-----|-----|-----|-----|-----|
| Jährliche Veränderungsrate des Jahresdurchschnitts | | | | | | | | | | | | | |
| 2003/12 | 2.1 | 2.0 | 1.5 | -0.1 | 2.0 | 1.0 | 1.4 | 3.4 | 3.1 | 2.2 | 4.0 | 2.8 | 4.0 |
| 2004/12 | 2.1 | 2.0 | 1.9 | 2.6 | 0.9 | 1.8 | 3.0 | 3.0 | 3.1 | 2.3 | 2.3 | 2.3 | 1.9 |
| 2005/12 | 2.2 | 2.2 | 2.5 | 1.6 | 1.7 | 1.9 | 4.1 | 3.5 | 3.4 | 1.9 | 2.2 | 2.2 | 2.0 |
| 2006/4 | 2.3p | 2.2p | 2.6 | 1.9 | 1.9 | 2.1 | 4.1 | 3.4 | 3.6 | 1.9 | 2.4 | 2.3 | 2.0 |
| Jährliche Veränderungsrate - 2004 | | | | | | | | | | | | | |
| Jan | 1.9 | 1.8 | 1.4 | 2.0 | 0.9 | 1.1 | 0.6 | 3.1 | 2.3 | 2.2 | 2.2 | 2.1 | 1.6 |
| Feb | 1.6 | 1.5 | 1.2 | 2.0 | 0.6 | 0.8 | 0.6 | 2.6 | 2.2 | 1.9 | 2.2 | 2.5 | 1.4 |
| Mär | 1.7 | 1.5 | 1.0 | 2.2 | 0.4 | 1.1 | 0.7 | 2.9 | 2.2 | 1.9 | 1.9 | 2.3 | 0.1 |
| Apr | 2.0 | 1.8 | 1.7 | 2.0 | 0.5 | 1.7 | 1.5 | 3.1 | 2.7 | 2.4 | 1.7 | 2.3 | 0.1 |
| Mai | 2.5 | 2.3 | 2.4 | 2.6 | 1.1 | 2.1 | 3.7 | 3.1 | 3.4 | 2.8 | 2.1 | 2.3 | 1.2 |
| Jun | 2.4 | 2.3 | 2.0 | 2.7 | 0.8 | 2.0 | 4.4 | 3.0 | 3.5 | 2.7 | 2.5 | 2.4 | 2.4 |
| Jul | 2.3 | 2.2 | 2.1 | 3.0 | 1.1 | 2.1 | 4.0 | 3.1 | 3.3 | 2.6 | 2.5 | 2.3 | 2.9 |
| Aug | 2.3 | 2.1 | 2.0 | 3.1 | 0.8 | 2.1 | 3.9 | 2.8 | 3.3 | 2.5 | 2.5 | 2.4 | 2.8 |
| Sep | 2.1 | 2.0 | 1.8 | 2.8 | 0.9 | 2.0 | 3.8 | 2.9 | 3.2 | 2.2 | 2.4 | 2.2 | 1.8 |
| Okt | 2.4 | 2.2 | 2.7 | 3.1 | 1.5 | 2.3 | 4.0 | 3.3 | 3.6 | 2.3 | 2.5 | 2.1 | 2.0 |
| Nov | 2.2 | 2.1 | 2.3 | 2.6 | 1.0 | 2.0 | 4.4 | 3.2 | 3.5 | 2.2 | 2.7 | 2.1 | 2.6 |
| Dez | 2.4 | 2.2 | 1.9 | 2.5 | 0.9 | 2.3 | 4.8 | 3.1 | 3.3 | 2.3 | 2.4 | 2.4 | 3.9 |
| Jährliche Veränderungsrate - 2005 | | | | | | | | | | | | | |
| Jan | 1.9 | 2.0 | 2.0 | 1.5 | 0.8 | 1.6 | 4.2 | 4.2 | 3.1 | 1.6 | 2.1 | 2.0 | 2.8 |
| Feb | 2.1 | 2.1 | 2.3 | 1.4 | 1.0 | 1.9 | 4.6 | 3.2 | 3.3 | 1.9 | 2.1 | 2.0 | 2.4 |
| Mär | 2.1 | 2.1 | 2.8 | 1.1 | 1.3 | 1.6 | 4.8 | 2.9 | 3.4 | 2.1 | 1.9 | 2.2 | 2.4 |
| Apr | 2.1 | 2.1 | 2.4 | 1.4 | 1.7 | 1.4 | 4.7 | 3.3 | 3.5 | 2.0 | 2.2 | 2.1 | 2.7 |
| Mai | 2.0 | 2.0 | 2.3 | 0.9 | 1.2 | 1.6 | 2.9 | 3.2 | 3.0 | 1.7 | 2.1 | 2.3 | 2.1 |
| Jun | 2.1 | 2.0 | 2.7 | 1.3 | 1.7 | 1.8 | 3.2 | 3.2 | 3.2 | 1.8 | 1.9 | 2.1 | 1.5 |
| Jul | 2.2 | 2.1 | 2.7 | 1.4 | 1.8 | 1.8 | 3.9 | 3.9 | 3.3 | 1.8 | 2.2 | 2.1 | 1.3 |
| Aug | 2.2 | 2.2 | 2.9 | 1.4 | 2.4 | 1.9 | 4.2 | 3.6 | 3.3 | 2.0 | 2.1 | 2.1 | 1.5 |
| Sep | 2.6 | 2.5 | 3.0 | 2.0 | 2.3 | 2.5 | 4.9 | 3.8 | 3.8 | 2.4 | 2.7 | 2.2 | 2.1 |
| Okt | 2.5 | 2.4 | 2.2 | 2.4 | 1.9 | 2.3 | 4.5 | 3.7 | 3.5 | 2.0 | 2.6 | 2.6 | 2.2 |
| Nov | 2.3 | 2.3 | 2.3 | 2.2 | 1.8 | 2.2 | 4.0 | 3.4 | 3.4 | 1.8 | 2.2 | 2.4 | 2.0 |
| Dez | 2.2 | 2.1 | 2.8 | 1.9 | 2.2 | 2.1 | 3.6 | 3.5 | 3.7 | 1.8 | 1.9 | 2.1 | 1.4 |
| Jährliche Veränderungsrate - 2006 | | | | | | | | | | | | | |
| Jan | 2.4 | 2.3 | 2.8 | 2.4 | 2.0 | 2.1 | 4.7 | 3.0 | 4.2 | 2.3 | 2.5 | 2.2 | 2.0 |
| Feb | 2.3 | 2.2 | 2.8 | 2.4 | 2.1 | 2.1 | 4.5 | 3.1 | 4.1 | 2.0 | 2.7 | 2.2 | 2.3 |
| Mär | 2.2 | 2.1 | 2.2 | 2.4 | 1.8 | 1.9 | 4.0 | 3.3 | 3.9 | 1.7 | 2.8 | 2.2 | 2.6 |
| Apr | 2.4p | 2.3p | 2.6 | 2.3 | 1.8 | 2.3 | 4.3 | 3.5 | 3.9 | 2.0 | 2.7 | 2.3 | 2.5 |
| Mai | | | | | | | | | | | | | |
| Jun | | | | | | | | | | | | | |
| Jul | | | | | | | | | | | | | |
| Aug | | | | | | | | | | | | | |
| Sep | | | | | | | | | | | | | |
| Okt | | | | | | | | | | | | | |
| Nov | | | | | | | | | | | | | |
| Dez | | | | | | | | | | | | | |

p vorläufig r revidiert : nicht verfügbar

TABELLE II
HARMONISIERTER VERBRAUCHERPREISINDEX
 VERÄNDERUNGSRATEN (%)

| LV | LT | LU | HU | MT | NL | AT | PL | PT | SI | SK | FI | SE | UK | |
|-----------------------------------------------------------|------|-----|-----|-----|------|------|-----|-----|-----|-----|------|-----|-----|---------|
| Jährliche Veränderungsrate des Jahresdurchschnitts | | | | | | | | | | | | | | |
| 2.9 | -1.1 | 2.5 | 4.7 | 1.9 | 2.2 | 1.3 | 0.7 | 3.3 | 5.7 | 8.4 | 1.3 | 2.3 | 1.4 | 2003/12 |
| 6.2 | 1.2 | 3.2 | 6.8 | 2.7 | 1.4 | 2.0 | 3.6 | 2.5 | 3.7 | 7.5 | 0.1 | 1.0 | 1.3 | 2004/12 |
| 6.9 | 2.7 | 3.8 | 3.5 | 2.5 | 1.5 | 2.1 | 2.2 | 2.1 | 2.5 | 2.8 | 0.8 | 0.8 | 2.1 | 2005/12 |
| 6.9 | 2.7 | 3.9 | 3.1 | 2.7 | 1.6 | 1.8p | 1.4 | 2.4 | 2.3 | 3.3 | 1.0 | 1.1 | 2.1 | 2006/4 |
| Jährliche Veränderungsrate - 2004 | | | | | | | | | | | | | | |
| 4.0 | -1.2 | 2.3 | 6.7 | 2.8 | 1.5 | 1.2 | 1.8 | 2.2 | 4.0 | 8.3 | 0.8 | 1.3 | 1.4 | Jan |
| 4.3 | -1.2 | 2.5 | 7.0 | 2.5 | 1.3 | 1.5 | 1.8 | 2.1 | 3.6 | 8.4 | 0.4 | 0.1 | 1.3 | Feb |
| 4.7 | -0.9 | 2.0 | 6.6 | 2.1 | 1.2 | 1.5 | 1.8 | 2.2 | 3.5 | 8.0 | -0.4 | 0.4 | 1.1 | Mär |
| 5.0 | -0.7 | 2.7 | 7.0 | 3.6 | 1.5 | 1.5 | 2.3 | 2.4 | 3.6 | 7.9 | -0.4 | 1.0 | 1.1 | Apr |
| 6.1 | 1.1 | 3.4 | 7.8 | 3.1 | 1.7 | 2.1 | 3.5 | 2.5 | 3.9 | 8.2 | -0.1 | 1.5 | 1.5 | Mai |
| 6.1 | 1.1 | 3.8 | 7.5 | 3.2 | 1.5 | 2.3 | 4.2 | 3.7 | 3.9 | 8.2 | -0.1 | 1.2 | 1.6 | Jun |
| 6.7 | 1.7 | 3.8 | 7.2 | 3.1 | 1.2 | 2.1 | 4.7 | 2.9 | 3.7 | 8.4 | 0.2 | 1.2 | 1.4 | Jul |
| 7.8 | 2.2 | 3.6 | 7.2 | 2.5 | 1.2 | 2.2 | 4.8 | 2.4 | 3.7 | 7.1 | 0.3 | 1.1 | 1.3 | Aug |
| 7.7 | 3.1 | 3.1 | 6.7 | 3.2 | 1.2 | 1.8 | 4.6 | 2.1 | 3.4 | 6.6 | 0.2 | 1.1 | 1.1 | Sep |
| 7.2 | 3.1 | 4.1 | 6.4 | 2.7 | 1.5 | 2.4 | 4.6 | 2.4 | 3.4 | 6.6 | 0.6 | 1.5 | 1.2 | Okt |
| 7.2 | 2.9 | 4.0 | 5.8 | 1.9 | 1.5 | 2.3 | 4.5 | 2.6 | 3.8 | 6.3 | 0.2 | 1.1 | 1.5 | Nov |
| 7.4 | 2.8 | 3.5 | 5.5 | 1.9 | 1.2 | 2.5 | 4.4 | 2.6 | 3.3 | 5.8 | 0.1 | 0.9 | 1.7 | Dez |
| Jährliche Veränderungsrate - 2005 | | | | | | | | | | | | | | |
| 6.7 | 2.8 | 2.9 | 4.0 | 1.9 | 1.2 | 2.4 | 3.8 | 2.0 | 2.3 | 3.2 | -0.2 | 0.5 | 1.6 | Jan |
| 7.0 | 3.2 | 3.2 | 3.4 | 2.5 | 1.5 | 2.3 | 3.6 | 2.1 | 2.8 | 2.7 | 0.0 | 1.2 | 1.7 | Feb |
| 6.6 | 3.2 | 3.5 | 3.3 | 2.6 | 1.5 | 2.4 | 3.4 | 2.3 | 3.3 | 2.4 | 0.9 | 0.5 | 1.9 | Mär |
| 7.1 | 3.2 | 3.7 | 3.8 | 2.0 | 1.3 | 2.3 | 3.1 | 2.0 | 2.7 | 2.7 | 1.2 | 0.4 | 1.9 | Apr |
| 6.5 | 1.9 | 3.7 | 3.5 | 2.4 | 1.0 | 2.0 | 2.1 | 1.8 | 2.1 | 2.4 | 0.6 | 0.2 | 1.9 | Mai |
| 6.6 | 2.0 | 3.2 | 3.7 | 2.1 | 1.5 | 2.0 | 1.4 | 0.6 | 1.7 | 2.6 | 1.0 | 0.8 | 2.0 | Jun |
| 6.3 | 1.9 | 4.0 | 3.6 | 1.7 | 1.5 | 2.1 | 1.5 | 1.9 | 2.0 | 2.1 | 0.9 | 0.7 | 2.3 | Jul |
| 6.3 | 2.3 | 4.3 | 3.5 | 2.5 | 1.6 | 1.9 | 1.8 | 2.5 | 1.8 | 2.1 | 1.0 | 1.1 | 2.4 | Aug |
| 7.4 | 2.5 | 4.7 | 3.6 | 2.0 | 1.7 | 2.6 | 1.9 | 2.7 | 3.2 | 2.3 | 1.1 | 1.1 | 2.5 | Sep |
| 7.7 | 3.0 | 5.0 | 3.1 | 3.0 | 1.5 | 2.0 | 1.6 | 2.6 | 3.2 | 3.5 | 0.8 | 0.9 | 2.3 | Okt |
| 7.6 | 2.9 | 3.6 | 3.3 | 4.3 | 1.6 | 1.7 | 1.1 | 2.5 | 2.1 | 3.6 | 1.0 | 1.2 | 2.1 | Nov |
| 7.1 | 3.0 | 3.4 | 3.3 | 3.4 | 2.0 | 1.6 | 0.8 | 2.5 | 2.4 | 3.9 | 1.1 | 1.3 | 1.9 | Dez |
| Jährliche Veränderungsrate - 2006 | | | | | | | | | | | | | | |
| 7.6 | 3.5 | 4.1 | 2.5 | 2.4 | 1.8 | 1.5 | 0.9 | 2.6 | 2.6 | 4.1 | 1.2 | 1.1 | 1.9 | Jan |
| 7.0 | 3.4 | 3.9 | 2.3 | 2.3 | 1.4 | 1.5 | 0.9 | 2.9 | 2.3 | 4.3 | 1.3 | 1.1 | 2.0 | Feb |
| 6.6 | 3.1 | 3.7 | 2.4 | 2.9 | 1.4 | 1.3 | 0.9 | 3.0 | 2.0 | 4.3 | 1.2 | 1.5 | 1.8 | Mär |
| 6.1 | 3.4 | 3.5 | 2.4 | 3.5 | 1.8p | 2.0p | 1.2 | 2.9 | 2.8 | 4.4 | 1.5 | 1.8 | 2.0 | Apr |
| | | | | | | | | | | | | | | Mai |
| | | | | | | | | | | | | | | Jun |
| | | | | | | | | | | | | | | Jul |
| | | | | | | | | | | | | | | Aug |
| | | | | | | | | | | | | | | Sep |
| | | | | | | | | | | | | | | Okt |
| | | | | | | | | | | | | | | Nov |
| | | | | | | | | | | | | | | Dez |

p vorläufig r revidiert : nicht verfügbar

TABELLE III
HARMONISIERTER
VERBRAUCHERPREISINDEX
INDEXZAHLEN

| | EWR | IS | NO | CH** |
|---------------------------------|---------|--------|-------|-------|
| Jahresdurchschnittsindex | | | | |
| 2003 | 95.97 | 96.41 | 97.9 | 98.0 |
| 2004 | 97.89 | 98.64 | 98.5 | 98.8 |
| 2005 | 100.00 | 100.00 | 100.0 | 100.0 |
| Monatlicher Index - 2004 | | | | |
| Jan | 96.52 | 97.17 | 97.7 | 97.9 |
| Feb | 96.71 | 96.79 | 97.9 | 97.9 |
| Mär | 97.29 | 97.56 | 98.4 | 98.1 |
| Apr | 97.69 | 97.94 | 98.6 | 99.0 |
| Mai | 98.08 | 98.63 | 98.7 | 99.2 |
| Jun | 98.10 | 99.17 | 98.7 | 99.4 |
| Jul | 97.92 | 98.86 | 98.6 | 98.3 |
| Aug | 98.06 | 98.79 | 98.3 | 98.7 |
| Sep | 98.23 | 99.17 | 98.7 | 98.7 |
| Okt | 98.57 | 99.71 | 99.0 | 99.6 |
| Nov | 98.54 | 99.79 | 99.0 | 99.7 |
| Dez | 98.92 | 100.10 | 98.8 | 99.6 |
| Monatlicher Index - 2005 | | | | |
| Jan | 98.42 | 99.71 | 98.7 | 99.1 |
| Feb | 98.73 | 99.56 | 98.7 | 99.3 |
| Mär | 99.32 | 99.94 | 99.2 | 99.6 |
| Apr | 99.73 | 99.48 | 99.7 | 100.4 |
| Mai | 100.00 | 99.17 | 100.1 | 100.3 |
| Jun | 100.08 | 99.56 | 100.3 | 100.0 |
| Jul | 100.02 | 99.40 | 99.9 | 99.5 |
| Aug | 100.26 | 99.17 | 100.1 | 99.6 |
| Sep | 100.71 | 100.79 | 100.8 | 100.1 |
| Okt | 100.95 | 101.25 | 100.8 | 100.9 |
| Nov | 100.75 | 100.87 | 100.8 | 100.7 |
| Dez | 101.03 | 101.10 | 100.8 | 100.6 |
| Monatlicher Index - 2006 | | | | |
| Jan | 100.63 | 101.01 | 100.5 | 100.4 |
| Feb | 100.93 | 100.78 | 101.4 | 100.7 |
| Mär | 101.40 | 101.93 | 101.6 | 100.6 |
| Apr | 102.06p | 102.72 | 102.5 | 101.4 |
| Mai | | | | |
| Jun | | | | |
| Jul | | | | |
| Aug | | | | |
| Sep | | | | |
| Okt | | | | |
| Nov | | | | |
| Dez | | | | |

TABELLE IV
HARMONISIERTER
VERBRAUCHERPREISINDEX
VERÄNDERUNGSRATEN (%)

| | EWR | IS | NO | CH** | |
|-----------------------------------------------------------|------|-----|------|------|---------|
| Jährliche Veränderungsrate des Jahresdurchschnitts | | | | | |
| | 2.0 | 1.4 | 2.0 | 0.6 | 2003/12 |
| | 2.0 | 2.3 | 0.6 | 0.8 | 2004/12 |
| | 2.2 | 1.4 | 1.5 | 1.2 | 2005/12 |
| | 2.2p | 1.2 | 2.0 | 1.1 | 2006/4 |
| Jährliche Veränderungsrate - 2004 | | | | | |
| | 1.7 | 1.5 | -1.5 | 0.2 | Jan |
| | 1.5 | 1.4 | -1.5 | 0.1 | Feb |
| | 1.5 | 1.0 | -0.4 | -0.1 | Mär |
| | 1.8 | 1.5 | 0.5 | 0.6 | Apr |
| | 2.3 | 2.3 | 1.1 | 0.9 | Mai |
| | 2.3 | 2.8 | 1.3 | 1.1 | Jun |
| | 2.2 | 2.7 | 1.6 | 0.8 | Jul |
| | 2.1 | 3.1 | 1.1 | 1.0 | Aug |
| | 2.0 | 2.7 | 1.1 | 0.8 | Sep |
| | 2.2 | 2.9 | 1.4 | 1.3 | Okt |
| | 2.1 | 2.9 | 1.4 | 1.5 | Nov |
| | 2.2 | 2.9 | 1.2 | 1.4 | Dez |
| Jährliche Veränderungsrate - 2005 | | | | | |
| | 2.0 | 2.6 | 1.0 | 1.2 | Jan |
| | 2.1 | 2.9 | 0.8 | 1.4 | Feb |
| | 2.1 | 2.4 | 0.8 | 1.5 | Mär |
| | 2.1 | 1.6 | 1.1 | 1.4 | Apr |
| | 2.0 | 0.5 | 1.4 | 1.1 | Mai |
| | 2.0 | 0.4 | 1.6 | 0.6 | Jun |
| | 2.1 | 0.5 | 1.3 | 1.2 | Jul |
| | 2.2 | 0.4 | 1.8 | 0.9 | Aug |
| | 2.5 | 1.6 | 2.1 | 1.4 | Sep |
| | 2.4 | 1.5 | 1.8 | 1.3 | Okt |
| | 2.2 | 1.1 | 1.8 | 1.0 | Nov |
| | 2.1 | 1.0 | 2.0 | 1.0 | Dez |
| Jährliche Veränderungsrate - 2006 | | | | | |
| | 2.2 | 1.3 | 1.8 | 1.3 | Jan |
| | 2.2 | 1.2 | 2.7 | 1.4 | Feb |
| | 2.1 | 2.0 | 2.4 | 1.0 | Mär |
| | 2.3p | 3.3 | 2.8 | 1.1 | Apr |
| | | | | | Mai |
| | | | | | Jun |
| | | | | | Jul |
| | | | | | Aug |
| | | | | | Sep |
| | | | | | Okt |
| | | | | | Nov |
| | | | | | Dez |

p vorläufig r revidiert : nicht verfügbar ** nationale VPI

HAUPTGRUPPEN DER HARMONISIERTEN VERBRAUCHERPREISINDIZES

April 2006 / April 2005

JÄHRLICHE VERÄNDERUNGSRATEN (%)

| | 00. | 01. | 02. | 03. | 04. | 05. | 06. | 07. | 08. | 09. | 10. | 11. | 12. |
|-----------------|------|------|-------|-------|------|------|------|------|-------|-------|--------|------|------|
| Eurozone | 2.4p | 1.5p | 2.7p | 0.4p | 5.3p | 1.0p | 1.1p | 4.6p | -3.7p | 0.5p | 2.6p | 2.7p | 2.1p |
| EU-15 | 2.3p | 1.3p | 2.5p | -0.7p | 5.7p | 0.5p | 1.4p | 4.4p | -2.8p | -0.1p | 3.2p | 2.8p | 2.6p |
| BE | 2.6 | 1.0 | 1.3 | 0.1 | 5.6 | 1.1 | 3.3 | 4.1 | -1.9 | 1.7 | 1.6 | 3.1 | 2.2 |
| CZ | 2.3 | -0.5 | 1.2 | -6.6 | 10.1 | -1.6 | 4.4 | 3.2 | 3.7 | 2.2 | 3.9 | 2.8 | 1.9 |
| DK | 1.8 | 1.7 | 0.3 | -2.7 | 3.9 | 0.6 | 1.5 | 3.1 | -2.0 | 1.4 | 1.5 | 2.4 | 1.6 |
| DE | 2.3 | 1.2 | 3.7 | -0.8 | 4.7 | -0.2 | 0.7 | 4.7 | -3.2 | 0.8 | 2.0 | 1.5 | 0.7 |
| EE | 4.3 | 4.0 | 3.2 | 3.9 | 8.0 | 1.9 | 1.7 | 8.3 | -6.1 | 4.5 | 3.6 | 2.0 | 4.6 |
| EL | 3.5 | 3.5 | 2.9 | 3.3 | 8.1 | 1.9 | 2.6 | 4.2 | 0.4 | 1.5 | 3.8 | 2.9 | 2.7 |
| ES | 3.9 | 3.5 | 2.2 | 1.3 | 7.2 | 2.7 | 1.3 | 6.9 | -1.2 | 1.2 | 3.9 | 4.7 | 3.6 |
| FR | 2.0 | 1.0 | 0.2 | 0.2 | 5.4 | 1.3 | 1.7 | 3.8 | -7.0 | -0.6 | 3.2 | 2.4 | 2.8 |
| IE | 2.7 | 1.7 | 1.1 | -1.7 | 6.6 | -1.3 | 4.5 | 5.9 | -0.6 | 0.4 | 4.7 | 3.4 | 2.5 |
| IT | 2.3 | 0.9 | 5.1 | 1.1 | 6.3 | 1.5 | -0.7 | 4.0 | -2.6 | 0.9 | 3.1 | 2.2 | 2.6 |
| CY | 2.5 | 6.4 | -1.3 | -8.7 | 12.4 | 0.1 | 2.0 | 5.4 | -0.1 | -0.6 | 5.3 | 0.3 | 2.6 |
| LV | 6.1 | 7.2 | 8.2 | 0.4 | 12.8 | 3.2 | 4.6 | 6.4 | -8.9 | 2.9 | 9.1 | 10.9 | 6.1 |
| LT | 3.4 | 4.6 | -1.8 | -2.1 | 5.2 | -0.2 | 6.6 | 11.3 | -2.6 | 2.2 | -1.1 | 2.7 | 4.3 |
| LU | 3.5 | 1.9 | 2.2 | 0.5 | 6.5 | 1.8 | 5.3 | 6.3 | -2.6 | 1.8 | 5.0 | 3.5 | 3.0 |
| HU | 2.4 | 5.6 | 3.1 | -1.6 | 2.3 | -2.5 | 4.5 | 3.0 | -2.8 | 0.6 | 7.4 | 3.9 | 1.7 |
| MT | 3.5 | 3.4 | 0.7 | -1.1 | 13.2 | 2.4 | 4.6 | 5.7 | 0.1 | 1.1 | 2.7 | 2.6 | 3.1 |
| NL | 1.8p | 1.7p | 0.4p | -0.4p | 4.6p | 0.0p | 3.3p | 4.1p | -2.1p | -0.3p | -15.8p | 2.4p | 0.7p |
| AT | 2.0p | 0.4p | -0.2p | 3.1p | 5.5p | 1.2p | 1.6p | 4.5p | -7.0p | -1.9p | 7.2p | 2.2p | 2.5p |
| PL | 1.2 | -0.5 | 1.6 | -6.8 | 4.7 | 0.0 | 1.5 | 2.0 | -0.4 | -2.0 | 1.6 | 1.7 | 3.7 |
| PT | 2.9 | 1.8 | 9.0 | -7.1 | 4.2 | 0.9 | 0.5 | 7.9 | -0.7 | 1.2 | 5.7 | 2.3 | 3.0 |
| SI | 2.8 | 0.8 | 3.9 | 2.3 | 7.2 | 3.1 | -2.5 | 2.4 | 0.0 | 2.5 | 2.8 | 4.3 | 4.1 |
| SK | 4.4 | 1.6 | 2.1 | -0.1 | 13.4 | -1.0 | 8.6 | 1.2 | 0.1 | 1.5 | 7.3 | 2.3 | 3.6 |
| FI | 1.5 | 1.1 | 2.4 | -2.1 | 3.4 | 0.9 | 0.9 | 3.4 | -8.1 | 0.5 | 2.5 | 2.2 | 1.8 |
| SE | 1.8 | -0.2 | 1.5 | 4.2 | 4.2 | -2.4 | 0.9 | 4.2 | -4.9 | -1.0 | 3.1 | 2.6 | 3.6 |
| UK | 2.0 | 0.3 | 2.5 | -4.4 | 7.7 | -0.8 | 2.7 | 4.4 | 0.3 | -1.6 | 4.7 | 3.0 | 4.0 |
| EEA | 2.3p | 1.3p | 2.4p | -0.7p | 5.7p | 0.5p | 1.4p | 4.4p | -2.7p | -0.1p | 3.2p | 2.8p | 2.6p |
| IS | 3.3 | 6.2 | 1.8 | -1.3 | 3.3 | 0.3 | 2.6 | 7.3 | 4.1 | 0.2 | 11.6 | 2.7 | 2.0 |
| NO | 2.8 | 0.9 | 1.6 | -1.9 | 10.7 | -1.5 | 3.8 | 3.6 | 5.2 | 0.8 | 2.2 | 2.2 | -1.8 |

p vorläufig r revidiert : nicht verfügbar

COICOP/HVPI Abteilungen

- | | |
|----------------------------------------------------------------------|----------------------------------------------------|
| 00. HVPI (Gesamtindex) | 06. Gesundheitspflege |
| 01. Nahrungsmittel und alkoholfreie Getränke | 07. Verkehr |
| 02. Alkoholische Getränke und Tabak | 08. Nachrichtenübermittlung |
| 03. Bekleidung und Schuhe | 09. Freizeit und Kultur |
| 04. Wohnung, Wasser, Elektrizität, Gas und andere Brennstoffe | 10. Erziehung und Unterricht |
| 05. Hausrat und laufende Instandhaltung des Hauses | 11. Restaurants und Hotels |
| | 12. Verschiedene Waren und Dienstleistungen |

Weitere Informationsquellen:

Daten:

[EUROSTAT Webseite/Wirtschaft und Finanzen/Preise/Harmonisierte Verbraucherpreisindizes, 1996=100/Harmonisierte Verbraucherpreisindizes - Monatliche Daten \(Index\)](#)

Journalisten können den Media Support Service kontaktieren:

BECH Gebäude Büro A4/017
L - 2920 Luxembourg
Tel. (352) 4301 33408
Fax (352) 4301 35349
E-mail: eurostat-mediasupport@cec.eu.int

European Statistical Data Support:

Eurostat hat zusammen mit den anderen Mitgliedern des „Europäischen Statistischen Systems“ ein Netz von Unterstützungszentren eingerichtet; diese Unterstützungszentren gibt es in fast allen Mitgliedstaaten der EU und in einigen EFTA-Ländern.

Sie sollen die Internetnutzer europäischer statistischer Daten beraten und unterstützen.

Kontakt Informationen für dieses Unterstützungsnetz finden Sie auf unserer Webseite:
www.europa.eu.int/comm/eurostat/

Ein Verzeichnis unserer Verkaufsstellen in der ganzen Welt erhalten Sie beim:

Amt für amtliche Veröffentlichungen der Europäischen Gemeinschaften

2, rue Mercier
L - 2985 Luxembourg
URL: <http://publications.eu.int>
E-mail: info-info-opoce@cec.eu.int