

MILK COLLECTION IN EU-15 INCREASED BY 0.4% IN THE 2003- 2004 MILK SEASON COMPARED TO 2002-2003

Agostino Angelini, Alain Bisval

Warning: These figures concern the collection of cows' milk by dairies from farms and not the production of cows' milk on farms.

Situation at the end of the milk season

Traditionally in the last month of the milk year significant modifications of the collection are observed. This is due to the attempts made in order to comply with the reference quantities, allotted in each member State within the framework of the quota policy. By analyzing data on collection, it appears that certain member States of the Union, which seemed likely to overshoot, curbed their deliveries at a time of the year when the growth of the grass should enhance milk production.

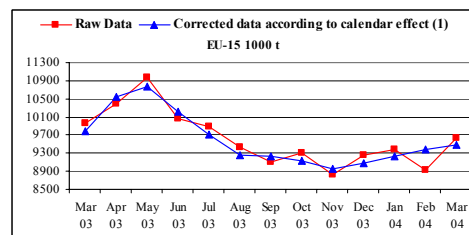
The trend in cows' milk collection by dairies

	Cows' milk collection by dairies 1000 t												Rate of change (%)			
	Milk season 2002/2003 (12 months)	Apr 2003	May 2003	Jun 2003	Jul 2003	Aug 2003	Sep 2003	Oct 2003	Nov 2003	Dec 2003	Jan 2004	Feb 2004	Mar 2004	Milk season 2003/2004 (12 months)	Corrected data ⁽¹⁾ Mar.04/Feb.04	Milk season Apr.02-Mar.03
BE	2894.5	258.9	271.2	246.4	237.1	218.2	219.4	224.2	211.0	236.2	238.4	225.9	240.9	2827.8	-0.2	-2.3
DK	4479.6	386.2	406.9	387.6	387.5	384.4	367.9	369.6	355.1	373.4	374.0	349.3	365.5	4507.4	-2.1	0.6
DE	26789.1	2333.7	2478.9	2327.8	2354.0	2270.1	2187.9	2219.0	2120.6	2252.7	2291.8	2176.7	2270.6	27283.7	-2.4	1.8
EL	561.5	52.5	53.1	50.5	51.2	51.0	50.4	50.0	44.4	46.5	42.0	47.2	51.1	589.9	1.4	5.1
ES	5902.3	506.0	525.4	501.0	501.0	487.1	468.5	471.0	454.9	478.0	481.7	460.9	504.9	5840.6	2.5	-1.0
FR	23395.2	2210.5	2274.0	1947.6	1784.9	1657.4	1680.4	1862.9	1852.7	2001.7	2036.9	1908.0	1950.9	23168.0	-4.3	-1.0
IE	5293.9	613.0	728.0	675.8	653.3	589.6	498.4	427.3	268.1	157.5	132.5	205.0	414.7	5363.2	89.2	1.3
IT	10088.6	916.7	915.4	852.3	862.9	818.7	808.3	815.2	801.5	815.6	851.4	824.0	909.3	10191.2	3.2	1.2
LU	260.0	22.7	24.3	22.6	22.0	20.3	19.8	20.0	19.5	21.4	22.2	20.9	22.1	257.9	-0.7	-0.8
NL	10612.8	902.2	957.8	886.8	908.9	882.4	877.7	891.6	834.0	883.6	885.4	808.0	838.5	10557.9	-2.8	-0.5
AT	2653.0	232.0	251.0	228.0	231.0	220.0	209.0	212.0	199.0	214.0	222.0	212.0	228.0	2658.0	0.6	0.2
PT	1910.7	165.9	177.0	166.7	162.4	146.7	139.0	138.6	133.8	143.9	149.2	145.1	165.3	1833.6	6.6	-4.0
FI	2431.3	205.3	214.0	203.6	203.7	196.6	188.3	190.1	189.0	202.1	208.5	198.1	211.7	2411.0	0.0	-0.8
SE	3201.4	279.9	287.5	270.2	266.1	265.9	254.7	256.5	251.5	267.9	276.0	263.4	285.9	3225.5	1.5	0.8
UK	14273.2	1308.5	1407.1	1303.8	1268.5	1215.9	1133.8	1148.9	1102.8	1160.3	1160.6	1084.8	1181.4	14476.4	1.9	1.4
EU-15	114727.0	10394.0	10971.8	10070.7	9894.6	9424.3	9103.6	9296.9	8837.8	9254.9	9372.5	8929.1	9641.9	115192.0	1.0	0.4

Data for Belgium are estimated from January 2004 to March 2004.

Annual analysis

At the end of the 2003-2004 milk season, the EU 15 collection exceeded by 465 000 tons the previous season (+ 0.4%). This situation does not take into account the correction for fat content which could be made to existing statistical data.



	Cows' milk collection by dairies 1000 t				
	Milk season 1999 / 2000 (12 months)	Milk season 2000 / 2001 (12 months)	Milk season 2001 / 2002 (12 months)	Milk season 2002 / 2003 (12 months)	Milk season 2003 / 2004 (12 months)
BE	3258.8	3124.3	3003.6	2894.5	2827.8
DK	4481.4	4472.6	4456.0	4479.6	4507.4
DE	26960.8	26949.0	26855.4	26789.1	27283.7
EL	533.3	569.9	603.7	561.5	589.9
ES	5629.8	5500.3	5861.9	5902.3	5840.6
FR	23288.6	23142.1	23214.4	23395.2	23168.0
IE	5080.6	5182.0	5269.6	5293.9	5363.2
IT	10292.8	10098.2	9953.3	10088.6	10191.2
LU	258.6	256.9	260.4	260.0	257.9
NL	10665.1	10534.1	10610.2	10612.8	10557.9
AT	2572.0	2659.0	2651.0	2653.0	2658.0
PT	1826.2	1834.6	1846.3	1910.7	1833.6
FI	2418.1	2422.5	2476.1	2431.3	2411.0
SE	3307.0	3291.2	3292.9	3201.4	3225.5
UK	14345.0	13954.9	14249.7	14273.2	14476.4
EU-15	114918.1	113991.6	114604.6	114727.0	115192.0

⁽¹⁾ Corrected data = monthly production / number of days of the month x (366/12)

Source: Eurostat New Cronos 25/05/2004.

Statistics
in focus

AGRICULTURE AND
FISHERIES

THEME 5 – 18/2004

Contents

Cows' milk collection
by dairies in EU 15

March 2004



EU
eurostat



Manuscript completed on: 26.05.2004
ISSN 1562-1340
Catalogue number: KS-NN-04-018-EN-N
© European Communities, 2004

Further information:

➤ Databases

NewCronos, Theme 5, Domain: zpa1

To obtain information or to order publications, databases and special sets of data, please contact the **Data Shop** network:

DANMARK	DEUTSCHLAND	ESPAÑA	FRANCE	ITALIA – Roma
DANMARKS STATISTIK Bibliotek og Information Eurostat Data Shop Sejrogade 11 DK-2100 KØBENHAVN Ø Tlf. (45) 39 17 30 30 Fax (45) 39 17 30 03 E-mail: bib@dst.dk URL: http://www.dst.dk/bibliotek	Statistisches Bundesamt Eurostat Data Shop Berlin Otto-Braun-Straße 70-72 (Eingang: Karl-Marx-Allee) D-10178 Berlin Tel. (49) 1888-644 94 27/28 (49) 611 75 94 27 Fax (49) 1888-644 94 30 E-Mail: datashop@destatis.de URL: http://www.eu-datashop.de/	INE Eurostat Data Shop Paseo de la Castellana, 183 Despacho 011B Entrada por Estébanez Caldeón E-28046 MADRID Tel. (34) 915 839 167/ 915 839 500 Fax (34) 915 830 357 E-mail: datashop@ine.es URL: http://www.ine.es/produser/datashop/index.html Member of the MIDAS Net	INSEE Info Service Eurostat Data Shop 195, rue de Bercy Tour Gamma A F-75582 PARIS CEDEX 12 Tél. (33) 1 53 17 88 44 Fax (33) 1 53 17 88 22 E-mail: datashop@insee.fr Member of the MIDAS Net	ISTAT Centro di informazione statistica Sede di Roma Eurostat Data Shop Via Cesare Balbo, 11a I-00184 Roma Tel. (39) 06 46 73 32 28 Fax (39) 06 46 73 31 01/ 07 E-mail: datashop@istat.it URL: http://www.istat.it/Prodotti-e/Allegati/Eurostatdatashop.html Member of the MIDAS Net
ITALIA – Milano	NEDERLAND	PORTUGAL	SUOMI/FINLAND	SVERIGE
ISTAT Ufficio Regionale per la Lombardia Eurostat Data Shop Via Fieno 3 I-20123 MILANO Tel. (39) 02 80 61 32 460 Fax (39) 02 80 61 32 304 E-mail: mileuro@tin.it URL: http://www.istat.it/Prodotti-e/Allegati/Eurostatdatashop.html Member of the MIDAS Net	Centraal Bureau voor de Statistiek Eurostat Data Shop - Voorburg Postbus 4000 NL-2270 JM VOORBURG Nederland Tel. (31) 70 337 49 00 Fax (31) 70 337 59 84 E-mail: datashop@cbs.nl URL: www.cbs.nl/eurodatashop	Eurostat Data Shop Lisboa INE/Serviço de Difusão Av. António José de Almeida, 2 P-1000-043 LISBOA Tel. (351) 21 842 61 00 Fax (351) 21 842 63 64 E-mail: data.shop@ine.pt	Statistics Finland Eurostat Data Shop Helsinki Tilastokirjasto PL-2B FIN-00022 Tilastokeskus Työpajakatu 13 B, 2 Kerros, Helsinki P. (358) 9 17 34 22 21 F. (358) 9 17 34 22 79 Sähköposti: datashop@stat.fi URL: http://www.tilastokeskus.fi/tk/kk/datashop/	Statistics Sweden Information service Eurostat Data Shop Karlavägen 100 - Box 24 300 S-104 51 STOCKHOLM Tfn (46) 8 50 69 48 01 Fax (46) 8 50 69 48 99 E-post: infoservice@scb.se URL: http://www.scb.se/templates/Standard_22884.asp
UNITED KINGDOM	NORGE	SCHWEIZ/SUISSE/SVIZZERA	UNITED STATES OF AMERICA	
Eurostat Data Shop Office for National Statistics Room 1.015 Cardiff Road Newport South Wales NP10 8XG United Kingdom Tel. (44) 1633 81 33 69 Fax (44) 1633 81 33 33 E-mail: eurostat.datashop@ons.gov.uk	Statistics Norway Library and Information Centre Eurostat Data Shop Kongens gate 6 Boks 8131 Dep. N-0033 OSLO Tel. (47) 21 09 46 42 / 43 Fax (47) 21 09 45 04 E-mail: Datashop@ssb.no URL: http://www.ssb.no/biblioteket/datashop/	Statistisches Amt des Kantons Zürich Eurostat Data Shop Bleichenweg 5 CH-8090 Zürich Tel. (41) 1 225 12 12 Fax (41) 1 225 12 99 E-mail: datashop@statistik.zh.ch URL: http://www.statistik.zh.ch	Harver Analytics Eurostat Data Shop 60 East 42nd Street Suite 3310 NEW YORK, NY 10165 USA Tel. (1) 212 986 93 00 Fax (1) 212 986 69 81 E-mail: eurodata@haver.com URL: http://www.haver.com/	

Media Support Eurostat (for professional journalists only):
 Bech Building Office A4/017 • L-2920 Luxembourg • Tel. (352) 4301 33408 • Fax (352) 4301 35349 • e-mail: eurostat-mediasupport@cec.eu.int

For information on methodology:

Agostino Angelini, Alain Bisval, Eurostat / E2, L-2920 Luxembourg, Tel. (352) 4301 37207, 37023, Fax (352) 4301 37318, E-mail: Agostino.Angelini@cec.eu.int, Alain.Bisval@cec.eu.int

ORIGINAL: French

Please visit our web site at www.europa.eu.int/comm/eurostat/ for further information!

A list of worldwide sales outlets is available at the **Office for Official Publications of the European Communities**.

2 rue Mercier – L-2985 Luxembourg
 Tel. (352) 2929 42118 Fax (352) 2929 42709
 URL: <http://publications.eu.int>
 E-mail: info-info-opoce@cec.eu.int

BELGIQUE/BELGIË – DANMARK – DEUTSCHLAND – GREECE/ELLADA – ESPAÑA – FRANCE – IRELAND – ITALIA – LUXEMBOURG – NEDERLAND – ÖSTERREICH
 PORTUGAL – SUOMI/FINLAND – SVERIGE – UNITED KINGDOM – ISLAND – NORGE – SCHWEIZ/SUISSE/SVIZZERA – BALGARUA – CESHÁ REPUBLIKA – CYPRUS
 EESTI – HRVATSKA – MAGYARORSZÁG – MALTA – POLSKA – ROMÂNIA – RUSSIA – SLOVAKIA – SLOVENIA – TÜRKIYE – AUSTRALIA – CANADA – EGYPT – INDIA
 ISRAËL – JAPAN – MALAYSIA – PHILIPPINES – SOUTH KOREA – THAILAND – UNITED STATES OF AMERICA

Order form

I would like to subscribe to Statistics in focus (from 1.1.2004 to 31.12.2004):

(for the Data Shop and sales office addresses see above)

All 9 themes (approximately 200 issues)

Paper: EUR 240

Language required: DE EN FR

Statistics in focus can be downloaded (pdf file) free of charge from the Eurostat web site. You only need to register. For other solutions, contact your Data Shop.

Please send me a free copy of 'Eurostat mini-guide' (catalogue containing a selection of Eurostat products and services)

Language required: DE EN FR

I would like a free subscription to 'Statistical References', the information letter on Eurostat products and services

Language required: DE EN FR

Mr Mrs Ms

(Please use block capitals)

Surname: _____ Forename: _____

Company: _____ Department: _____

Function: _____

Address: _____

Post code: _____ Town: _____

Country: _____

Tel.: _____ Fax: _____

E-mail: _____

Payment on receipt of invoice, preferably by:

Bank transfer

Visa Eurocard

Card No: _____ Expires on: ____/____/____

Please confirm your intra-Community VAT number:

If no number is entered, VAT will be automatically applied. Subsequent reimbursement will not be possible.