

## Harmonized Indices of Consumer Prices December 2003

# Statistics in focus

### ECONOMY AND FINANCE

THEME 2 – 5/2004

### PRICES AND PURCHASING POWER PARITIES

## Contents

Price Indices	2
Rates of Change	4
COICOP/HICP Main categories	6
Methodological Notes	7

The rate of inflation for the euro-zone\*, as measured by the Monetary Union Index of Consumer Prices (MUICP), was 2.0% comparing December 2003 with December 2002. The MUICP is the average of the HICPs for the euro-zone Member States. The euro-zone is treated as an entity regardless of its composition.

The annual rate of change for the euro-zone fell from 2.2% in November to 2.0% in December 2003\*\*. A year ago, in December 2002, the corresponding rate was 2.3%.

The rate of inflation in the EU, as measured by the European Index of Consumer Prices (EICP=EU-15), fell from 2.0% in November to 1.8% in December 2003\*\*. A year ago, in December 2002, the corresponding rate was 2.2%.

EU Member States with the lowest inflation rates in December 2003 were Germany (1.1%), Denmark and Finland (both 1.2%). The highest inflation rates were reported for Greece (3.1%), Ireland (2.9%) and Spain (2.7%).

The annual rate of inflation for the European Economic Area (EEA) fell from 2.0% to 1.8% between November and December 2003\*\*. A year ago, in December 2002, the corresponding rate was 2.2%. In Switzerland\*\*\* the annual rate of change rose from 0.5% in November to 0.6% in December 2003 and in the USA\*\*\* from 1.8% to 1.9%. (No December data available for Japan\*\*\* in time for publication).

The inflation rates for the euro-zone, the EU and the USA\*\*\* from December 2002 to December 2003 and for Japan\*\*\* from December 2002 to November 2003 are shown in the graph below:

\* The euro-zone comprises: Belgium, Germany, Greece (from January 2001), Spain, France, Ireland, Italy, Luxembourg, the Netherlands, Austria, Portugal and Finland.

\*\* Data for Greece for October and November 2003 were not available in time for publication. Due to this fact, Euro-zone (MUICP), EU15 (EICP) and EEA (EEAICP) were calculated using Eurostat estimates.

\*\*\* For the USA, Japan and Switzerland the national CPIs are given, which are not strictly comparable with the HICPs.

Annual Rate of Change (%)

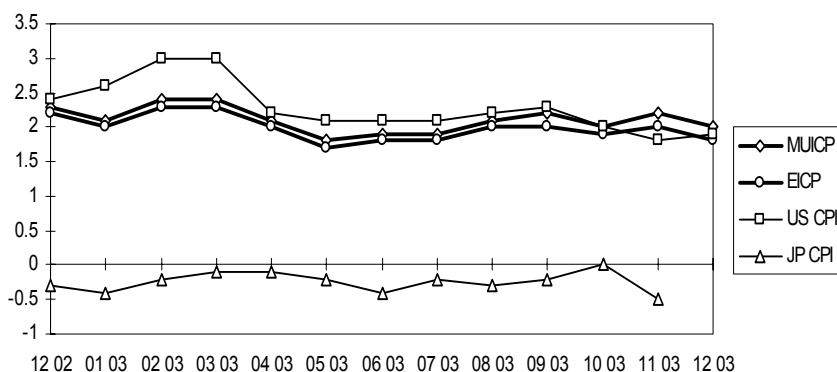


TABLE I HARMONIZED INDICES OF CONSUMER PRICES INDEX NUMBERS												
	Euro-zone (MUICP)	EU-15 (EICP)	B	DK	D	EL	E	F	IRL	I	L	NL
	<b>Annual Average Index</b>											
	1996 = 100											
<b>2000</b>	106.0	106.2	106.4	108.3	104.2	115.8	109.7	104.4	111.5	108.4	107.3	108.2
<b>2001</b>	108.5	108.6	109.0	110.7	106.2	120.1	112.8	106.3	116.0	110.9	109.9	113.8
<b>2002</b>	110.9	110.8	110.7	113.4	107.6	124.8	116.8	108.3	121.5	113.8	112.1	118.2
<b>2003</b>	113.2\$	113.0\$	112.3	115.6	108.8	:	120.5	110.7\$	126.3	117.0\$	115.0	120.8\$
	<b>Monthly Index</b>											
<b>2001</b>												
January	106.8	106.9	105.9	108.9	104.9	116.8	110.8	104.7	112.4	109.5	107.3	110.7
February	107.1	107.2	107.8	109.5	105.6	116.6	110.8	105.0	113.4	108.9	108.5	111.7
March	107.7	107.8	108.0	110.2	105.6	119.3	111.7	105.5	114.3	110.0	109.1	113.0
April	108.4	108.5	109.0	110.8	106.0	120.6	112.7	106.1	115.2	110.8	109.5	113.9
May	108.9	109.0	109.5	111.4	106.5	121.2	113.1	106.8	115.9	111.2	110.7	114.2
June	109.0	109.1	109.8	111.2	106.7	121.1	113.4	106.8	116.7	111.5	111.0	113.8
July	108.8	108.8	108.4	110.8	106.9	118.7	112.6	106.6	116.4	111.2	109.6	113.7
August	108.7	108.8	109.8	110.7	106.6	118.7	112.7	106.6	116.7	110.8	110.4	114.0
September	109.0	109.1	110.0	111.3	106.5	121.2	113.3	106.8	117.1	111.2	110.6	115.2
October	109.1	109.2	109.8	111.4	106.1	121.6	113.8	106.9	117.7	111.8	110.7	115.3
November	109.0	109.0	109.8	111.2	105.9	121.7	114.1	106.6	117.5	112.0	110.7	115.0
December	109.5	109.5	109.7	111.4	107.1	123.1	114.4	106.7	118.5	112.1	110.4	114.8
<b>2002</b>												
January	109.6	109.5	108.7	111.6	107.2	122.4	114.2	107.3	118.3	112.0	109.6	116.1
February	109.8	109.7	110.5	112.1	107.5	121.0	114.3	107.4	119.0	111.8	110.9	116.7
March	110.4	110.3	110.7	113.0	107.7	124.5	115.3	107.8	120.1	112.8	111.0	117.9
April	110.9	110.8	110.8	113.4	107.6	125.5	116.9	108.3	121.0	113.6	111.6	118.7
May	111.1	111.0	111.0	113.5	107.7	125.8	117.3	108.4	121.7	113.9	112.1	118.5
June	111.1	111.0	110.7	113.6	107.6	125.5	117.3	108.4	121.9	114.0	112.4	118.1
July	111.0	110.8	109.6	113.2	108.0	123.0	116.5	108.3	121.3	113.9	111.7	118.0
August	111.0	110.9	111.2	113.4	107.8	123.2	116.9	108.5	122.0	113.7	112.6	118.2
September	111.3	111.2	111.3	114.1	107.6	125.8	117.3	108.7	122.4	114.3	113.0	119.4
October	111.6	111.5	111.2	114.4	107.5	126.4	118.4	108.9	122.9	114.9	113.5	119.3
November	111.5	111.4	111.0	114.3	107.1	126.5	118.6	108.8	123.0	115.2	113.7	118.7
December	112.0	111.9	111.1	114.3	108.3	127.4	119.0	109.0	123.9	115.5	113.5	118.5
<b>2003</b>												
January	111.9	111.7	110.0	114.5	108.2	126.4	118.5	109.3	123.9	115.2	113.2	119.2
February	112.4	112.2	112.3	115.3	108.8	126.1	118.7	110.1	125.1	114.7	114.5	120.1
March	113.1	112.8	112.6	116.2	109.0	129.3	119.6	110.6	126.0	116.1	115.1	121.2
April	113.2	113.0	112.4	116.2	108.7	129.6	120.6	110.4	126.6	117.0	114.9	121.3
May	113.1	112.9	112.0	115.9	108.4	130.2	120.5	110.3	126.4	117.2	114.7	121.2
June	113.2	112.9	112.4	115.9	108.6	130.0	120.6	110.5	126.5	117.3	114.7	120.6
July	113.1	112.8	111.1	115.2	108.9	127.3	119.9	110.4	126.0	117.2	113.8	120.5
August	113.3	113.1	113.0	115.1	109.0	127.3	120.5	110.7	126.8	116.8	115.2	120.8
September	113.7	113.5	113.2	116.0	108.8	129.9	120.8	111.2	127.0	117.7	116.0	121.8
October	113.8\$	113.6\$	112.8	115.7	108.7	:	121.6	111.4	127.0	118.1	115.5	121.6
November	113.9\$	113.6\$	113.0	115.9	108.5	:	122.0	111.5	127.0	118.4	116.0	121.1
December	114.2\$	113.9\$	113.0	115.7	109.5	131.4	122.2	111.6\$	127.5	118.4\$	116.2	120.4\$
	* estimated	\$ provisional	# revised	! definition differs	:	Not available						

**TABLE II**  
**NATIONAL CPIs**  
INDEX NUMBERS

A	P	FIN	S	UK	EEA (EEAICP)	IS	N	CH	US	JP	
								1996 = 100			
104.5	109.4	107.0	104.8	105.6	106.3	110.0	110.0	102.9	109.8	101.4	<b>2000</b>
106.9	114.2	109.8	107.6	106.9	108.6	117.3	113.0	103.8	112.9	100.6	<b>2001</b>
108.8	118.4	112.0	109.7	108.3	110.9	123.5	113.9	104.5	114.7	99.9	<b>2002</b>
110.2	122.3	113.5	112.3	109.8	113.0\$	125.2	116.2	105.2	117.3	:	<b>2003</b>
											<b>2001</b>
105.8	112.0	107.8	105.2	105.4	106.9	111.9	111.9	103.5	111.6	101.2	January
106.2	112.2	108.5	105.6	105.7	107.3	112.0	112.8	103.4	112.1	100.9	February
106.4	112.7	109.0	106.4	106.1	107.8	112.8	113.1	103.6	112.3	100.7	March
106.9	113.4	109.5	107.5	106.7	108.5	114.2	113.7	103.8	112.8	100.9	April
107.1	114.4	110.5	108.3	107.5	109.1	116.0	114.2	104.4	113.2	101.0	May
107.2	114.7	110.6	108.1	107.7	109.2	118.1	114.2	104.6	113.4	100.7	June
107.1	114.9	109.7	107.4	106.9	108.8	119.1	112.4	104.4	113.2	100.4	July
106.8	114.7	109.9	107.6	107.3	108.8	119.1	112.1	103.9	113.2	100.8	August
107.2	114.7	110.9	108.9	107.6	109.2	120.1	112.8	104.0	113.6	100.6	September
107.4	115.1	110.8	108.7	107.4	109.2	120.8	112.8	103.8	113.2	100.6	October
107.4	115.8	110.4	108.8	107.2	109.1	121.3	112.7	104.0	113.1	100.1	November
107.7	116.0	110.4	108.9	107.5	109.5	121.8	112.8	103.9	112.7	100.0	December
											<b>2002</b>
107.9	116.1	110.9	108.2	107.1	109.5	122.9	112.9	104.1	112.8	99.8	January
108.0	115.9	111.2	108.5	107.3	109.8	122.6	113.3	104.1	113.3	99.2	February
108.2	116.4	111.8	109.6	107.7	110.3	123.1	113.6	104.1	113.9	99.5	March
108.7	117.4	112.3	109.9	108.1	110.8	123.0	113.6	105.0	114.6	99.8	April
108.9	118.3	112.5	110.1	108.4	111.0	123.0	113.8	105.1	114.6	100.1	May
108.8	118.7	112.3	109.9	108.4	111.0	123.7	113.8	104.9	114.7	100.0	June
108.7	119.0	111.9	109.3	108.1	110.9	123.9	113.7	104.2	114.9	99.6	July
109.0	119.2	111.9	109.4	108.4	110.9	123.3	113.3	104.4	115.2	99.9	August
108.9	119.1	112.4	110.2	108.7	111.2	123.9	114.1	104.5	115.3	99.9	September
109.2	119.8	112.7	110.6	108.9	111.5	124.4	114.3	105.1	115.5	99.7	October
109.2	120.5	112.3	110.3	108.9	111.4	124.1	114.7	104.9	115.6	99.7	November
109.5	120.6	112.3	110.7	109.3	111.9	124.1	115.7	104.9	115.4	99.7	December
											<b>2003</b>
109.7	120.7	112.5	111.0	108.6	111.8	124.3	117.6	104.9	115.8	99.3	January
109.9	120.7	113.5	112.1	109.0	112.3	124.0	117.9	105.1	116.7	99.0	February
110.2	120.8	113.9	112.8	109.4	112.9	125.4	117.2	105.5	117.4	99.3	March
110.1	121.8	113.8	112.4	109.7	113.0	125.3	116.4	105.7	117.1	99.7	April
109.9	122.7	113.7	112.3	109.7	112.9	125.2	115.8	105.5	117.0	99.9	May
109.9	122.7	113.6	112.1	109.6	113.0	125.3	115.5	105.5	117.1	98.2	June
109.8	122.5	113.0	111.9	109.5	112.9	125.0	115.1	104.7	117.1	99.3	July
110.1	122.6	113.2	111.8	109.9	113.1	124.5	115.3#	104.9	117.7	99.6	August
110.4	122.9	113.8	112.7	110.2	113.5	125.4	115.8#	105.1	117.9	99.7	September
110.4	123.2	113.7	112.8	110.4	113.6\$	125.8	115.8#	105.6	117.8	99.7	October
110.6	123.3	113.6	112.5	110.3	113.7\$	126.0	115.8#	105.5	117.7	98.6	November
110.9	123.4	113.7	112.7	110.7	114.0\$	126.3	115.8	105.5	117.6	:	December
* estimated    \$ provisional    # revised    ! definition differs    : Not available											

**TABLE III**  
**HARMONIZED INDICES OF CONSUMER PRICES**  
RATES OF CHANGE (%)

	Euro-zone (MUICP)	EU-15 (EICP)	B	DK	D	EL	E	F	IRL	I	L	NL
<b>Annual Average Rate of Change</b>												
<b>2000</b>	2.1	1.9	2.7	2.7	1.4	2.9	3.5	1.8	5.3	2.6	3.8	2.3
<b>2001</b>	2.3	2.2	2.4	2.3	1.9	3.7	2.8	1.8	4.0	2.3	2.4	5.1
<b>2002</b>	2.3	2.1	1.6	2.4	1.3	3.9	3.6	1.9	4.7	2.6	2.1	3.9
<b>2003 (Dec)</b>	2.1\$	2.0\$	1.5	2.0	1.0	:	3.1	2.2\$	4.0	2.8\$	2.5	2.2\$
<b>Annual Rate of Change (t/t-12)</b>												
<b>2001</b>												
January	2.0	1.9	2.7	2.3	1.3	3.2	2.9	1.4	3.9	2.4	2.9	4.6
February	1.9	1.8	2.5	2.3	1.7	3.5	2.7	1.4	3.9	1.5	2.9	5.0
March	2.2	2.0	2.2	2.2	1.7	3.2	3.0	1.4	4.1	2.1	3.0	5.0
April	2.7	2.5	2.9	2.6	2.2	3.7	3.6	2.0	4.3	2.9	2.7	5.5
May	3.1	2.9	3.1	2.8	2.8	3.9	3.8	2.5	4.1	2.9	3.8	5.4
June	2.8	2.7	3.0	2.2	2.5	4.5	3.8	2.2	4.3	2.9	2.7	5.1
July	2.5	2.4	2.7	2.3	2.2	4.2	2.4	2.2	4.0	2.4	2.4	5.3
August	2.4	2.3	2.5	2.5	2.2	4.0	2.1	2.0	3.7	2.0	2.5	5.2
September	2.2	2.1	1.9	2.1	1.8	4.0	2.3	1.6	3.8	2.1	1.9	5.3
October	2.2	2.1	1.9	2.0	1.6	3.2	2.5	1.8	3.8	2.4	1.7	5.0
November	2.0	1.8	1.8	1.7	1.3	2.9	2.5	1.3	3.4	2.2	1.4	4.8
December	2.1	1.9	2.0	2.1	1.4	3.5	2.5	1.4	4.4	2.2	0.9	5.1
<b>2002</b>												
January	2.6	2.5	2.6	2.5	2.2	4.8	3.1	2.5	5.2	2.3	2.1	4.9
February	2.5	2.4	2.5	2.4	1.8	3.8	3.2	2.3	4.9	2.7	2.2	4.5
March	2.5	2.3	2.5	2.5	2.0	4.4	3.2	2.2	5.1	2.5	1.7	4.3
April	2.3	2.1	1.7	2.3	1.5	4.1	3.7	2.1	5.0	2.5	1.9	4.2
May	2.0	1.8	1.4	1.9	1.1	3.8	3.7	1.5	5.0	2.4	1.3	3.8
June	1.9	1.7	0.8	2.2	0.8	3.6	3.4	1.5	4.5	2.2	1.3	3.8
July	2.0	1.9	1.1	2.2	1.0	3.6	3.5	1.6	4.2	2.4	1.9	3.8
August	2.1	1.9	1.3	2.4	1.1	3.8	3.7	1.8	4.5	2.6	2.0	3.7
September	2.1	1.9	1.2	2.5	1.0	3.8	3.5	1.8	4.5	2.8	2.2	3.6
October	2.3	2.1	1.3	2.7	1.3	3.9	4.0	1.9	4.4	2.8	2.5	3.5
November	2.3	2.2	1.1	2.8	1.1	3.9	3.9	2.1	4.7	2.9	2.7	3.2
December	2.3	2.2	1.3	2.6	1.1	3.5	4.0	2.2	4.6	3.0	2.8	3.2
<b>2003</b>												
January	2.1	2.0	1.2	2.6	0.9	3.3	3.8	1.9	4.7	2.9	3.3	2.7
February	2.4	2.3	1.6	2.9	1.2	4.2	3.8	2.5	5.1	2.6	3.2	2.9
March	2.4	2.3	1.7	2.8	1.2	3.9	3.7	2.6	4.9	2.9	3.7	2.8
April	2.1	2.0	1.4	2.5	1.0	3.3	3.2	1.9	4.6	3.0	3.0	2.2
May	1.8	1.7	0.9	2.1	0.6	3.5	2.7	1.8	3.9	2.9	2.3	2.3
June	1.9	1.8	1.5	2.0	0.9	3.6	2.8	1.9	3.8	2.9	2.0	2.1
July	1.9	1.8	1.4	1.8	0.8	3.5	2.9	1.9	3.9	2.9	1.9	2.1
August	2.1	2.0	1.6	1.5	1.1	3.3	3.1	2.0	3.9	2.7	2.3	2.2
September	2.2	2.0	1.7	1.7	1.1	3.3	3.0	2.3	3.8	3.0	2.7	2.0
October	2.0\$	1.9\$	1.4	1.1	1.1	:	2.7	2.3	3.3	2.8	1.8	1.9
November	2.2\$	2.0\$	1.8	1.4	1.3	:	2.9	2.5	3.3	2.8	2.0	2.0
December	2.0\$	1.8\$	1.7	1.2	1.1	3.1	2.7	2.4\$	2.9	2.5\$	2.4	1.6\$
* estimated    \$ provisional    # revised    ! definition differs    : Not available												

**TABLE IV**  
**NATIONAL CPIs**  
RATES OF CHANGE (%)

A	P	FIN	S	UK	EEA (EEAICP)	IS	N	CH	US	JP	
2.0	2.8	3.0	1.3	0.8	1.9	4.4	3.0	1.6	3.4	-0.7	<b>2000</b>
2.3	4.4	2.7	2.7	1.2	2.2	6.6	2.7	0.9	2.8	-0.7	<b>2001</b>
1.7	3.7	2.0	2.0	1.3	2.1	5.3	0.8	0.6	1.6	-0.9	<b>2002</b>
1.3	3.3	1.3	2.3	1.4	2.0\$	1.4	2.0	0.6	2.3	:	<b>2003 (Dec)</b>
											<b>2001</b>
2.2	4.4	2.9	1.6	0.9	1.9	3.4	3.1	1.3	3.7	-0.3	January
1.8	4.9	2.7	1.5	0.8	1.8	3.9	3.5	0.8	3.5	-0.3	February
1.9	5.1	2.5	1.7	1.0	2.0	4.1	3.5	1.0	2.9	-0.7	March
2.6	4.6	2.8	3.0	1.1	2.5	4.4	3.7	1.2	3.3	-0.7	April
2.9	4.9	3.3	3.1	1.7	2.9	5.6	4.0	1.8	3.6	-0.7	May
2.6	4.6	3.0	3.0	1.7	2.7	7.2	3.3	1.6	3.2	-0.8	June
2.8	4.3	2.6	2.9	1.4	2.4	7.4	2.2	1.4	2.7	-0.8	July
2.4	4.0	2.7	3.0	1.8	2.3	8.1	2.2	1.1	2.7	-0.7	August
2.4	4.1	2.6	3.3	1.3	2.1	8.8	1.9	0.7	2.6	-0.8	September
2.3	4.2	2.4	2.9	1.2	2.1	8.3	1.8	0.6	2.1	-0.8	October
1.9	4.1	2.1	2.9	0.8	1.8	8.6	1.3	0.3	1.9	-1.0	November
1.8	3.9	2.3	3.2	1.0	1.9	9.1	1.6	0.3	1.6	-1.2	December
											<b>2002</b>
2.0	3.7	2.9	2.9	1.6	2.4	9.8	0.9	0.5	1.1	-1.4	January
1.7	3.3	2.5	2.7	1.5	2.3	9.5	0.4	0.7	1.1	-1.6	February
1.7	3.3	2.6	3.0	1.5	2.3	9.1	0.4	0.5	1.5	-1.2	March
1.7	3.5	2.6	2.2	1.3	2.1	7.7	-0.1	1.1	1.6	-1.1	April
1.7	3.4	1.8	1.7	0.8	1.8	6.0	-0.4	0.6	1.2	-0.9	May
1.5	3.5	1.5	1.7	0.6	1.7	4.7	-0.4	0.3	1.1	-0.7	June
1.5	3.6	2.0	1.8	1.1	1.9	4.0	1.2	-0.1	1.5	-0.8	July
2.1	3.9	1.8	1.7	1.0	1.9	3.5	1.1	0.5	1.8	-0.9	August
1.6	3.8	1.4	1.2	1.0	1.9	3.2	1.2	0.5	1.5	-0.7	September
1.7	4.1	1.7	1.7	1.4	2.1	3.0	1.3	1.2	2.0	-0.9	October
1.7	4.1	1.7	1.4	1.6	2.2	2.3	1.8	0.9	2.2	-0.4	November
1.7	4.0	1.7	1.7	1.7	2.2	1.9	2.6	0.9	2.4	-0.3	December
											<b>2003</b>
1.7	4.0	1.4	2.6	1.4	2.0	1.1	4.2	0.8	2.6	-0.4	January
1.8	4.1	2.1	3.3	1.6	2.3	1.1	4.1	0.9	3.0	-0.2	February
1.8	3.8	1.9	2.9	1.6	2.3	1.9	3.2	1.3	3.0	-0.1	March
1.3	3.7	1.3	2.3	1.5	2.0	1.9	2.5	0.7	2.2	-0.1	April
0.9	3.7	1.1	2.0	1.2	1.7	1.8	1.8	0.4	2.1	-0.2	May
1.0	3.4	1.2	2.0	1.1	1.8	1.3	1.5	0.5	2.1	-0.4	June
1.0	2.9	1.0	2.4	1.3	1.8	0.9	1.2	0.3	2.1	-0.2	July
1.0	2.9	1.2	2.2	1.4	1.9#	1.0	1.8#	0.5	2.2	-0.3	August
1.4	3.2	1.2	2.3	1.4	2.0	1.2	1.5#	0.5	2.3	-0.2	September
1.1	2.8	0.9	2.0	1.4	1.9\$	1.1	1.3#	0.5	2.0	0.0	October
1.3	2.3	1.2	2.0	1.3	2.0\$	1.5	1.0#	0.5	1.8	-0.5	November
1.3	2.3	1.2	1.8	1.3	1.8\$	1.8	0.1	0.6	1.9	:	December
* estimated    \$ provisional    # revised    ! definition differs    : Not available											

**TABLE V**  
**MAIN CATEGORIES OF HARMONIZED INDICES OF CONSUMER PRICES**

ANNUAL RATES OF CHANGE (%)

COICOP /HICP Code	COICOP/HICP Divisions	Euro-zone (MUICP)	EU-15 (EICP)	B	DK	D	EL	E	F	IRL	I	L	NL	A	P	FIN	S	UK	EEA (EEAICP)	IS	N
		<b>Annual Rate of Change</b>																			
		December 2003 / December 2002																			
00.	HICP (all-items index)	2.0\$	1.8\$	1.7	1.2	1.1	3.1	2.7	2.4\$	2.9	2.5\$	2.4	1.6\$	1.3	2.3	1.2	1.8	1.3	1.8\$	1.8	0.1
01.	FOOD AND NON-ALCOHOLIC BEVERAGES	2.6\$	2.6\$	2.1	1.2	1.4	3.0	4.1	2.4\$	0.1	3.9\$	2.1	-0.2\$	2.7	2.5	2.2	1.5	3.0	2.6\$	0.4	3.4
02.	ALCOHOLIC BEVERAGES AND TOBACCO	7.7\$	6.1\$	4.6	-6.2	5.1	7.0	2.8	17.3\$	6.4	7.9\$	5.2	2.1\$	2.2	3.1	1.1	1.3	1.8	6.0\$	1.5	-1.0
03.	CLOTHING AND FOOTWEAR	1.0\$	0.3\$	1.0	1.8	-0.5	2.9	2.4	0.0\$	-2.7	2.5\$	1.2	-1.7\$	0.7	1.3	-0.8	-2.7	-3.6	0.2\$	2.1	-11.5
04.	HOUSING, WATER, ELECTRICITY, GAS AND OTHER FUELS	2.3\$	2.4\$	1.1	1.4	1.9	2.8	2.8	1.9\$	4.2	2.8\$	2.4	4.3\$	0.9	3.3	3.6	7.2	2.2	2.4\$	4.5	3.8
05.	FURNISHINGS, HOUSEHOLD EQUIPMENT AND ROUTINE MAINTENANCE OF THE HOUSE	1.1\$	0.8\$	1.0	0.5	0.1	1.8	1.7	1.4\$	-1.4	2.0\$	1.7	0.6\$	1.1	1.9	0.1	0.6	-0.6	0.8\$	-0.1	-1.1
06.	HEALTH	1.8\$	1.9\$	2.3	3.2	0.7	4.1	2.0	2.9\$	7.0	1.9\$	-1.6	1.1\$	0.8	1.5	3.8	2.9	3.0	2.0\$	3.1	4.9
07.	TRANSPORT	1.9\$	2.0\$	1.4	2.2	1.9	1.8	1.0	1.9\$	2.6	2.3\$	1.8	2.1\$	0.9	1.5	-2.0	1.6	3.0	2.0\$	2.4	-0.4
08.	COMMUNICATIONS	-0.7\$	-0.7\$	1.3	-3.5	0.8	-2.3	-0.2	0.5\$	2.3	-4.7\$	-1.5	1.9\$	-0.7	-2.1	-3.0	-2.2	-0.2	-0.8\$	0.6	-5.5
09.	RECREATION AND CULTURE	-0.2\$	-0.7\$	0.8	1.3	-1.3	2.3	0.1	-0.6\$	3.4	1.6\$	2.4	-0.1\$	0.1	0.9	1.4	-1.5	-2.2	-0.7\$	0.8	-1.0
10.	EDUCATION	3.1\$	3.7\$	0.5	15.8	2.2	4.4	4.4	2.7\$	6.4	1.8\$	1.2	3.2\$	1.9	11.3	5.6	-3.3	4.7	3.7\$	5.8	7.3
11.	RESTAURANTS AND HOTELS	2.8\$	2.8\$	2.7	2.4	0.3	5.0	4.0	2.7\$	4.8	3.5\$	2.6	2.1\$	2.5	3.4	2.5	2.9	3.0	2.8\$	1.0	2.7
12.	MISCELLANEOUS GOODS AND SERVICES	2.4\$	2.4\$	2.6	2.6	1.9	2.2	2.9	2.3\$	2.5	2.9\$	2.6	3.1\$	1.7	3.0	2.3	2.1	2.6	2.4\$	3.7	0.9

\* estimated    \$ provisional    # revised    ! definition differs    : Not available

## ➤ METHODOLOGICAL NOTES

*Harmonized Indices of Consumer Prices* (HICPs) are produced and published monthly. They are central indicators for ESCBs/ECBs single monetary policy for the euro-zone as they form the basis of the Monetary Union Index of Consumer Prices (MUICP). HICPs provide the best statistical basis for international comparisons of consumer price inflation in the European perspective. HICPs cover virtually all areas of household final monetary consumption expenditure (HFMCE).

The relative distribution of consumers' expenditure on individual products varies from country to country. Hence, there is no *uniform basket* applying to all Member States. Owner occupiers' shelter costs, where expressed as imputed rents or mortgage interest payments, are not regarded as part of the inflationary process and hence excluded.

The weights used in the compilation of HICPs may relate to a reference period up to seven years prior to the current year. However, adjustments must be made each year for especially large changes in the expenditure pattern. This minimises disparities arising from different up-date frequencies.

In order to keep HICPs broadly in step with each other and up-to-date in terms of market developments, new products must be included when they achieve a significant relative importance. HICPs must be shown to be based on appropriate sampling procedures, taking into account the national diversity of products and prices. The samples must be kept well up-to-date, in particular by banning the practice whereby *missing* prices are simply assumed to be equal to the last observed prices. In order to measure *pure* price changes, the prices included in HICPs need to be adjusted for changes in the quality of products. Certain inappropriate practices, such as *automatic linking*, have been ruled out in this context. Furthermore, HICPs have to be compiled using specified formulae.

The analysis of sources of inflationary pressure requires a sub-division of HICPs into component parts relating to different product groups. About 100 sub-indices and weights published by Eurostat are based on COICOP/HICP, a version of the international *Classification Of Individual CO*nsumption *by Purpose* adapted for HICPs.

The MUICP is calculated as a weighted average of the euro-zone regardless of its composition. The index is computed as an annual chain index allowing for country weights to change each year as well as allowing for inclusion of additional countries into the euro-zone. The country weight of a Member State is its share of HFMCE in the euro-zone total. Expenditure expressed in the former national currencies is converted into euro using the irrevocably locked conversion rates. The country weights used are based on national accounts data referring to the year ending two calendar years prior to the current year. They are updated to December prices of the latest calendar year prior to the current one.

The European Index of Consumer Prices (EICP) is calculated as an annual chain index for the 15 EU Member States up to 1998. Starting in 1999, the MUICP is treated as a single entity within the EICP. The European Economic Area Index of Consumer Prices (EEAICP) further includes Iceland and Norway. Country weights for the EICP and EEAICP are derived from the value of HFMCE in national currencies (including the euro for the euro-zone) converted into purchasing power standards (PPS). The euro-zone "country weight" reflects its share in the EU and EEA totals.

Greece is included in the MUICP starting with the January 2001 index. The annual rate of change for the MUICP of each current month in 2001 is the change from the corresponding month in 2000 to December 2000 for the eleven euro-zone countries combined with the change from December 2000 to the current month of 2001 for the twelve euro-zone countries. In other words, the euro-zone is treated as an entity regardless of its composition. For analytical purposes Eurostat has made available in NewCronos historic series covering the current twelve Member States of the euro-zone.

Although MUICP weights are updated every year, the inflation rate can be decomposed in an additive way into the sum of the effects of the expenditure groups covered by the index. Hence, it is possible to say how much the various item-groups contribute to the total inflation rate. Eurostat has made these time series available in the NewCronos database.

Technical notes on the HICP and MUICP were given in Eurostat News Release 21/97 of 5.3.1997, Memo 8/98 of 4.5.1998, and Memo 2/00 of 18.2.2000. Further details can be obtained from the 'Compendium of HICP reference documents', Catalogue number 2/2001/B/5.

# Further information:

## ➤ Databases

NewCronos, Theme 2, Domain: price

To obtain information or to order publications, databases and special sets of data, please contact the **Data Shop** network:

DANMARK	DEUTSCHLAND	ESPAÑA	FRANCE	ITALIA – Roma
<b>DANMARKS STATISTIK</b> <b>Bibliotek og Information</b> <b>Eurostat Data Shop</b> Sejrogade 11 DK-2100 KØBENHAVN Ø Tlf. (45) 39 17 30 30 Fax (45) 39 17 30 03 E-mail: bib@dst.dk URL: <a href="http://www.dst.dk/bibliotek">http://www.dst.dk/bibliotek</a>	<b>Statistisches Bundesamt</b> <b>Eurostat Data Shop Berlin</b> Otto-Braun-Straße 70-72 (Eingang: Karl-Marx-Allee) D-10178 Berlin Tel. (49) 1888-644 94 27/28 (49) 611 75 94 27 Fax (49) 1888-644 94 30 E-Mail: <a href="mailto:datashop@destatis.de">datashop@destatis.de</a> URL: <a href="http://www.eu-datashop.de/">http://www.eu-datashop.de/</a>	<b>INE</b> <b>Eurostat Data Shop</b> Paseo de la Castellana, 183 Despacho 011B Entrada por Estébanez Caldeón E-28046 MADRID Tel. (34) 915 839 167/ 915 839 500 Fax (34) 915 830 357 E-mail: <a href="mailto:datashop@ine.es">datashop@ine.es</a> URL: <a href="http://www.ine.es/produser/datashop/index.html">http://www.ine.es/produser/datashop/index.html</a> Member of the MIDAS Net	<b>INSEE Info Service</b> <b>Eurostat Data Shop</b> 195, rue de Bercy Tour Gamma A F-75582 PARIS CEDEX 12 Tél. (33) 1 53 17 88 44 Fax (33) 1 53 17 88 22 E-mail: <a href="mailto:datashop@insee.fr">datashop@insee.fr</a> Member of the MIDAS Net	<b>ISTAT</b> <b>Centro di informazione statistica</b> <b>Sede di Roma</b> <b>Eurostat Data Shop</b> Via Cesare Balbo, 11a I-00184 Roma Tel. (39) 06 46 73 32 28 Fax (39) 06 46 73 31 01/ 07 E-mail: <a href="mailto:datashop@istat.it">datashop@istat.it</a> URL: <a href="http://www.istat.it/Prodotti-e/Allegati/Eurostatdatashop.html">http://www.istat.it/Prodotti-e/Allegati/Eurostatdatashop.html</a> Member of the MIDAS Net
ITALIA – Milano	NEDERLAND	PORTUGAL	SUOMI/FINLAND	SVERIGE
<b>ISTAT</b> <b>Ufficio Regionale per la Lombardia</b> <b>Eurostat Data Shop</b> Via Fieno 3 I-20123 MILANO Tel. (39) 02 80 61 32 460 Fax (39) 02 80 61 32 304 E-mail: <a href="mailto:mileuro@tin.it">mileuro@tin.it</a> URL: <a href="http://www.istat.it/Prodotti-e/Allegati/Eurostatdatashop.html">http://www.istat.it/Prodotti-e/Allegati/Eurostatdatashop.html</a> Member of the MIDAS Net	<b>Centraal Bureau voor de Statistiek</b> <b>Eurostat Data Shop - Voorburg</b> Postbus 4000 NL-2270 JM VOORBURG Nederland Tel. (31) 70 337 49 00 Fax (31) 70 337 59 84 E-mail: <a href="mailto:datashop@cbs.nl">datashop@cbs.nl</a> URL: <a href="http://www.cbs.nl/eurodatashop">www.cbs.nl/eurodatashop</a>	<b>Eurostat Data Shop Lisboa</b> <b>INE/Serviço de Difusão</b> Av. António José de Almeida, 2 P-1000-043 LISBOA Tel. (351) 21 842 61 00 Fax (351) 21 842 63 64 E-mail: <a href="mailto:data.shop@ine.pt">data.shop@ine.pt</a>	<b>Statistics Finland</b> <b>Eurostat Data Shop Helsinki</b> <b>Tilastokirjasto</b> PL 2B FIN-00022 Tilastokeskus Työpajakatu 13 B, 2.Kerros, Helsinki P. (358) 9 17 34 22 21 F. (358) 9 17 34 22 79 Sähköposti: <a href="mailto:datashop@stat.fi">datashop@stat.fi</a> URL: <a href="http://www.tilastokeskus.fi/tk/kk/datashop/">http://www.tilastokeskus.fi/tk/kk/datashop/</a>	<b>Statistics Sweden</b> <b>Information service</b> <b>Eurostat Data Shop</b> Karlavägen 100 - Box 24 300 S-104 51 STOCKHOLM Tfn (46) 8 50 69 48 01 Fax (46) 8 50 69 48 99 E-post: <a href="mailto:infoservice@scb.se">infoservice@scb.se</a> URL: <a href="http://www.scb.se/templates/Standard___22884.asp">http://www.scb.se/templates/Standard___22884.asp</a>
UNITED KINGDOM	NORGE	SCHWEIZ/SUISSE/SVIZZERA	UNITED STATES OF AMERICA	
<b>Eurostat Data Shop</b> <b>Office for National Statistics</b> Room 1.015 Cardiff Road Newport South Wales NP10 8XG United Kingdom Tel. (44) 1633 81 33 69 Fax (44) 1633 81 33 33 E-mail: <a href="mailto:eurostat.datashop@ons.gov.uk">eurostat.datashop@ons.gov.uk</a>	<b>Statistics Norway</b> <b>Library and Information Centre</b> <b>Eurostat Data Shop</b> Kongens gate 6 Boks 8131 Dep. N-0033 OSLO Tel. (47) 21 09 46 42 / 43 Fax (47) 21 09 45 04 E-mail: <a href="mailto:Datashop@ssb.no">Datashop@ssb.no</a> URL: <a href="http://www.ssb.no/biblioteket/datashop/">http://www.ssb.no/biblioteket/datashop/</a>	<b>Statistisches Amt des Kantons Zürich</b> <b>Eurostat Data Shop</b> Bleichenweg 5 CH-8090 Zürich Tel. (41) 1 225 12 12 Fax (41) 1 225 12 99 E-mail: <a href="mailto:datashop@statistik.zh.ch">datashop@statistik.zh.ch</a> URL: <a href="http://www.statistik.zh.ch">http://www.statistik.zh.ch</a>	<b>Harver Analytics</b> <b>Eurostat Data Shop</b> 60 East 42nd Street Suite 3310 NEW YORK, NY 10165 USA Tel. (1) 212 986 93 00 Fax (1) 212 986 69 81 E-mail: <a href="mailto:eurodata@haver.com">eurodata@haver.com</a> URL: <a href="http://www.haver.com/">http://www.haver.com/</a>	

Media Support Eurostat (for professional journalists only):  
 Bech Building Office A4/017 • L-2920 Luxembourg • Tel. (352) 4301 33408 • Fax (352) 4301 35349 • e-mail: [eurostat-mediasupport@cec.eu.int](mailto:eurostat-mediasupport@cec.eu.int)

## For information on methodology:

Carsten OLSSON, Eurostat / C5, L-2920 Luxembourg, Tel. (352) 4301 33375, Fax (352) 4301 33989,  
 E-mail: [estat-hicp-methods@cec.eu.int](mailto:estat-hicp-methods@cec.eu.int)

ORIGINAL: English

Please visit our web site at [www.europa.eu.int/comm/eurostat/](http://www.europa.eu.int/comm/eurostat/) for further information!

A list of worldwide sales outlets is available at the **Office for Official Publications of the European Communities**.

2 rue Mercier – L-2985 Luxembourg  
 Tel. (352) 2929 42118 Fax (352) 2929 42709  
 URL: <http://publications.eu.int>  
 E-mail: [info-info-opoce@cec.eu.int](mailto:info-info-opoce@cec.eu.int)

BELGIQUE/BELGIË – DANMARK – DEUTSCHLAND – GREECE/ELLADA – ESPAÑA – FRANCE – IRELAND – ITALIA – LUXEMBOURG – NEDERLAND – ÖSTERREICH  
 PORTUGAL – SUOMI/FINLAND – SVERIGE – UNITED KINGDOM – ISLAND – NORGE – SCHWEIZ/SUISSE/SVIZZERA – BALGARUA – CESKÁ REPUBLIKA – CYPRUS  
 EESTI – HRVATSKA – MAGYARORSZÁG – MALTA – POLSKA – ROMÂNIA – RUSSIA – SLOVAKIA – SLOVENIA – TÜRKIYE – AUSTRALIA – CANADA – EGYPT – INDIA  
 ISRAËL – JAPAN – MALAYSIA – PHILIPPINES – SOUTH KOREA – THAILAND – UNITED STATES OF AMERICA

## Order form

I would like to subscribe to *Statistics in focus* (from 1.1.2004 to 31.12.2004):

(for the Data Shop and sales office addresses see above)

All 9 themes (approximately 200 issues)

Paper: EUR 240

Language required:  DE  EN  FR

*Statistics in focus* can be downloaded (pdf file) free of charge from the Eurostat web site. You only need to register. For other solutions, contact your Data Shop.

Please send me a free copy of 'Eurostat mini-guide' (catalogue containing a selection of Eurostat products and services)

Language required:  DE  EN  FR

I would like a free subscription to 'Statistical References', the information letter on Eurostat products and services

Language required:  DE  EN  FR

Mr  Mrs  Ms

(Please use block capitals)

Surname: \_\_\_\_\_ Forename: \_\_\_\_\_

Company: \_\_\_\_\_ Department: \_\_\_\_\_

Function: \_\_\_\_\_

Address: \_\_\_\_\_

Post code: \_\_\_\_\_ Town: \_\_\_\_\_

Country: \_\_\_\_\_

Tel.: \_\_\_\_\_ Fax: \_\_\_\_\_

E-mail: \_\_\_\_\_

**Payment on receipt of invoice, preferably by:**

Bank transfer

Visa  Eurocard

Card No: \_\_\_\_\_ Expires on: \_\_\_\_/\_\_\_\_/\_\_\_\_

**Please confirm your intra-Community VAT number:**

If no number is entered, VAT will be automatically applied. Subsequent reimbursement will not be possible.