

# Intra-EU deliveries of petroleum products in 2001

*Emile SIEBENALLER*

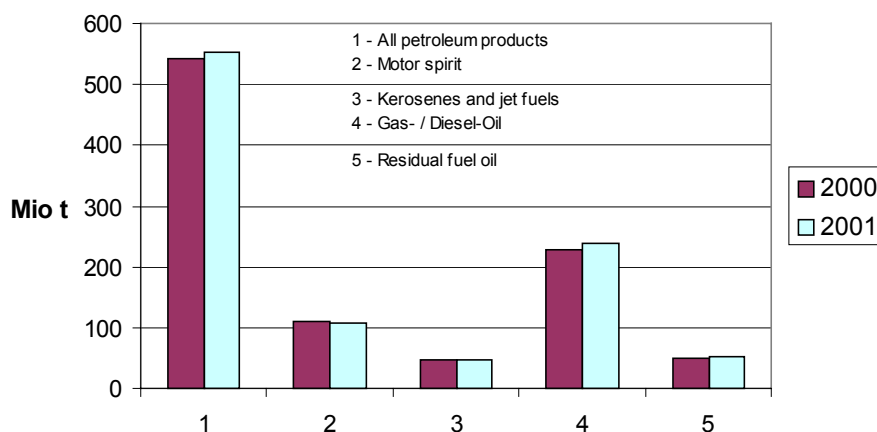


Figure 1: Intra-EU deliveries, EU-15

Deliveries of petroleum products within the EU rose in 2001 by 1.6% to a total of 552.3 million tonnes, compared with 543.4 million tonnes in 2000.

The breakdown by main product is as follows:

- Deliveries of motor spirit fell once again, this time by 1.4% to 108.3 million tonnes.
- Intra-EU deliveries of kerosene and jet fuels fell by 1.9% from 47.1 million tonnes in 2000 to 46.2 million tonnes for the 2001 reference year.
- Quantities of gas oil and domestic fuel oil were up by 4.8% from 227.7 million tonnes in 2000 to 238.6 million tonnes in 2001.
- Residual fuel oil deliveries rose by 0.2% from 51.1 million tonnes in 2000 to 51.2 million tonnes in 2001.

Statistics  
in focus

ENVIRONMENT AND  
ENERGY

THEME 8 – 9/2002

ENERGY

Contents

Provisional data for 2001



Manuscript completed on: 26.07.2002  
ISSN 1562-3106  
Catalogue number: KS-NQ-02-009-EN-N  
© European Communities, 2002

## Trends in deliveries by Member State

The main trends by product in 2001 were as follows:

- Deliveries of motor spirit increased in Greece (+ 3.7%), Ireland (+ 2.3%), the Netherlands (+ 1.9%), Finland (+ 1.4%) and Sweden (+ 0.7%) and fell in Germany (-3.3%), Portugal (-2.8%), Belgium (-2.8%), Denmark (-2.3%), France (-2.1%), the United Kingdom (-1.7%), Luxembourg (-1.4%), Spain (-0.5%), Austria (-0.2%) and Italy (-0.2%).
  
- Kerosene and jet fuel deliveries were up in Ireland (+ 18.8%), Luxembourg (+ 8.0%), Denmark (+ 3.8%), Sweden (+ 3.5%), the United Kingdom (+ 2.4%), Spain (+ 1.1%) and Finland (+ 0.4%) but down in Belgium (-21.2%), Greece (-9.7%), France (-7.5%), Portugal (-5.7%), Germany (-5.5%), the Netherlands (-3.2%), Austria (-2.6%) and Italy (-1.5%).

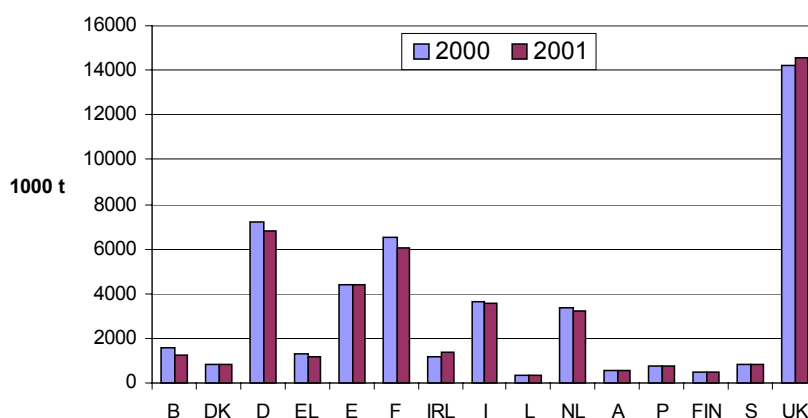


Figure 2: Deliveries of kerosene and jet fuels

- Total deliveries of gas oil/diesel oil and domestic fuel oil fell in Sweden (-16.7%) and slightly in the Netherlands (-0.1%), but rose by 10.3% in Portugal, 8.6% in Luxembourg, 7.9% in Austria, 7.7% in Spain, 6.6% in Germany, 6.4% in Finland, 5.4% in France, 5.2% in Greece, 5.2% in Belgium, 4.3% in Italy, 3.2% in Ireland, 1.8% in Denmark and 1.4% in the United Kingdom.

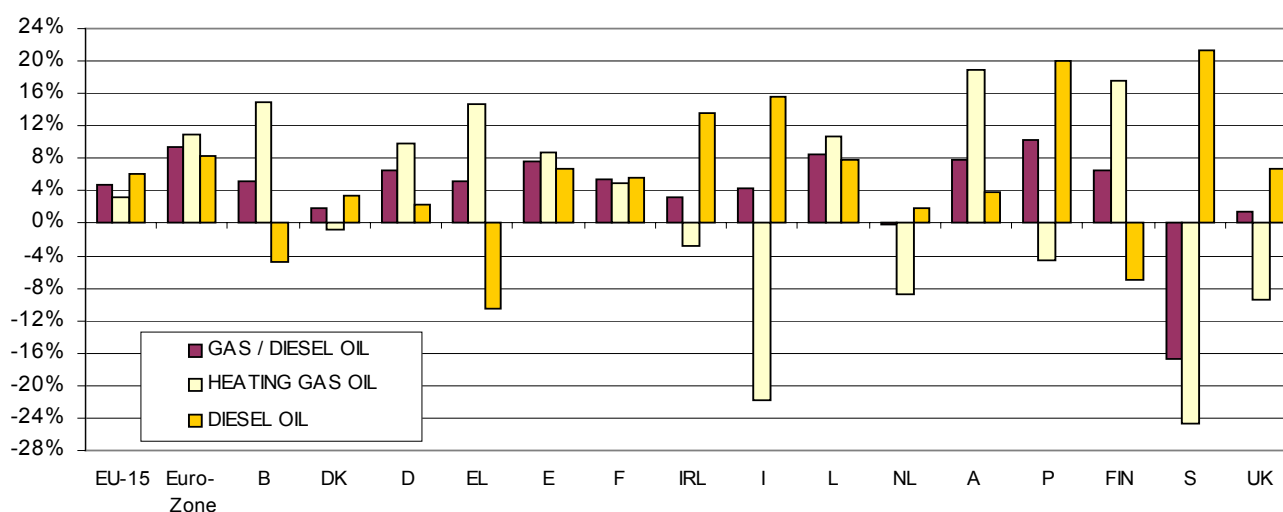



Figure 3: Change from 2000 to 2001 in deliveries of gas oil/diesel oil and domestic fuel oil

- Quantities of residual fuel oil delivered were up in the Netherlands (+ 93.9%), Luxembourg (+ 40.0%), the United Kingdom (+ 17.8%), Denmark (+ 17.2%), Belgium (+ 10.6%), Germany (+ 8.8%), Finland (+ 6.7%), Austria (+ 4.9%), Portugal (+ 1.1%) and Spain (+ 0.4%), but down in Sweden (-11.0%), Greece (-8.1%), Ireland (-7.6%), France (-5.5%) and Italy (-3.3%).

| MINERALÖLERZEUGNISSE<br>Inlandslieferungen<br>JAN-DEZ 2001 - Erste Ergebnisse<br>1 000 t |         |           |        | PETROLEUM PRODUCTS<br>Inland Deliveries<br>JAN-DEC 2001 - First Results<br>1 000 t |         |        |        |        |       |        |       |        |        | PRODUITS PETROLIERS<br>Livraisons Intérieures<br>JAN-DEC 2001 - Premiers Résultats<br>1 000 t |       |        |        |  |
|--|---------|-----------|--------|--|---------|--------|--------|--------|-------|--------|-------|--------|--------|---|-------|--------|--------|--|
|         | EU-15   | Euro-Zone | B      | DK   | D       | EL     | E      | F      | IRL   | I      | L     | NL     | A      | P   | FIN   | S      | UK     |  |
| <b>ALLE MINERALÖLERZEUGNISSE</b>   |         |           |        | <b>ALL PETROLEUM PRODUCTS</b>  |         |        |        |        |       |        |       |        |        | <b>TOUS PRODUITS PETROLIERS</b>   |       |        |        |  |
| 2000   | 543 352 | 433 904   | 22 008 | 8 902  | 120 385 | 15 392 | 59 546 | 85 356 | 7 622 | 78 801 | 2 239 | 23 806 | 11 204 | 14 318  | 8 619 | 14 243 | 70 912 |  |
| 2001   | 552 254 | 459 255   | 22 180 | 9 117  | 122 518 | 15 564 | 61 845 | 87 136 | 7 830 | 79 938 | 2 371 | 24 324 | 11 811 | 14 856  | 8 882 | 12 967 | 70 915 |  |
| 2001/2000 %  | 1.6     | 5.8       | 0.8    | 2.4  | 1.8     | 1.1    | 3.9    | 2.1    | 2.7   | 1.4    | 5.9   | 2.2    | 5.4    | 3.8   | 3.1   | -9.0   | 0.0    |  |
| darunter:<br><b>MOTORENBENZIN</b>  |         |           |        | among which:<br><b>MOTOR SPIRIT</b>  |         |        |        |        |       |        |       |        |        | dont :<br><b>ESSENCES MOTEUR</b>  |       |        |        |  |
| 2000   | 109 835 | 79 290    | 2 247  | 1 984  | 28 900  | 3 263  | 8 534  | 12 333 | 1 505 | 15 298 | 580   | 4 038  | 1 979  | 2 090   | 1 786 | 3 946  | 21 352 |  |
| 2001   | 108 289 | 81 385    | 2 185  | 1 938  | 27 935  | 3 385  | 8 492  | 12 072 | 1 540 | 15 270 | 572   | 4 116  | 1 975  | 2 032   | 1 811 | 3 974  | 20 992 |  |
| 2001/2000 %  | -1.4    | 2.6       | -2.8   | -2.3   | -3.3    | 3.7    | -0.5   | -2.1   | 2.3   | -0.2   | -1.4  | 1.9    | -0.2   | -2.8  | 1.4   | 0.7    | -1.7   |  |
| <b>PETROLEUM/ FLUGTURBINENKRAFTSTOFFE</b>  |         |           |        | <b>KEROSENES AND JET FUELS</b>   |         |        |        |        |       |        |       |        |        | <b>PETROLE LAMPANT ET CARBUREACTEURS</b>  |       |        |        |  |
| 2000   | 47 096  | 29 948    | 1 601  | 814  | 7 199   | 1 302  | 4 371  | 6 500  | 1 152 | 3 628  | 312   | 3 334  | 574    | 785   | 492   | 827    | 14 206 |  |
| 2001   | 46 210  | 29 968    | 1 261  | 845  | 6 806   | 1 176  | 4 417  | 6 010  | 1 368 | 3 572  | 337   | 3 228  | 559    | 740   | 494   | 856    | 14 541 |  |
| 2001/2000 %  | -1.9    | 0.1       | -21.2  | 3.8  | -5.5    | -9.7   | 1.1    | -7.5   | 18.8  | -1.5   | 8.0   | -3.2   | -2.6   | -5.7  | 0.4   | 3.5    | 2.4    |  |
| <b>DIESELKRAFTST. U. DESTILLATHEIZÖLE</b>  |         |           |        | <b>GAS / DIESEL OIL</b>  |         |        |        |        |       |        |       |        |        | <b>GASOIL ET FUEL-OIL FLUIDE</b>  |       |        |        |  |
| 2000   | 227 721 | 188 619   | 10 609 | 3 759  | 56 828  | 6 336  | 24 994 | 44 881 | 3 086 | 25 666 | 1 303 | 6 662  | 5 864  | 4 790   | 3 936 | 5 902  | 23 105 |  |
| 2001   | 238 619 | 206 446   | 11 161 | 3 828  | 60 577  | 6 666  | 26 915 | 47 299 | 3 184 | 26 770 | 1 415 | 6 657  | 6 328  | 5 285   | 4 189 | 4 919  | 23 426 |  |
| 2001/2000 %  | 4.8     | 9.5       | 5.2    | 1.8  | 6.6     | 5.2    | 7.7    | 5.4    | 3.2   | 4.3    | 8.6   | -0.1   | 7.9    | 10.3  | 6.4   | -16.7  | 1.4    |  |
| darunter:<br><b>DIESELKRAFTSTOFFE</b>  |         |           |        | among which:<br><b>AUTOMOTIVE DIESEL OIL</b>                                       |         |        |        |        |       |        |       |        |        | dont :<br><b>GASOIL ROUTIER</b>   |       |        |        |  |
| 2000   | 126 856 | 105 787   | 5 192  | 2 293  | 24 907  | 2 375  | 14 119 | 27 134 | 1 121 | 17 955 | 995   | 5 416  | 4 261  | 2 900   | 1 787 | 1 025  | 15 376 |  |
| 2001   | 134 518 | 114 485   | 4 939  | 2 372  | 25 497  | 2 124  | 15 084 | 28 667 | 1 273 | 20 744 | 1 074 | 5 521  | 4 421  | 3 480   | 1 661 | 1 243  | 16 418 |  |
| 2001/2000 %  | 6.0     | 8.2       | -4.9   | 3.4  | 2.4     | -10.6  | 6.8    | 5.6    | 13.6  | 15.5   | 7.9   | 1.9    | 3.8    | 20.0  | -7.1  | 21.3   | 6.8    |  |
| <b>RÜCKSTANDSHEIZÖLE</b>   |         |           |        | <b>RESIDUAL FUEL OIL</b>   |         |        |        |        |       |        |       |        |        | <b>FUEL-OIL RESIDUEL</b>  |       |        |        |  |
| 2000   | 51 075  | 44 596    | 1 577  | 435  | 6 360   | 3 001  | 6 735  | 3 677  | 1 736 | 18 420 | 5     | 49     | 1 298  | 3 260   | 1 479 | 1 173  | 1 870  |  |
| 2001   | 51 172  | 47 416    | 1 744  | 510  | 6 921   | 2 757  | 6 765  | 3 473  | 1 604 | 17 814 | 7     | 95     | 1 361  | 3 297   | 1 578 | 1 044  | 2 202  |  |
| 2001/2000 %  | 0.2     | 6.3       | 10.6   | 17.2   | 8.8     | -8.1   | 0.4    | -5.5   | -7.6  | -3.3   | 40.0  | 93.9   | 4.9    | 1.1   | 6.7   | -11.0  | 17.8   |  |

N. B. Euro-zone : EU-11 up to 31.12.2000 - EU-12 (EU-11 + Greece) from 1.1.2001

# Further information:

## ➤ Databases

New Cronos : Theme 8, Domain: SIRENE

To obtain information or to order publications, databases and special sets of data, please contact the **Data Shop** network:

| BELGIQUE/BELGIË  | DANMARK   | DEUTSCHLAND   | ESPAÑA  | FRANCE  | ITALIA – Roma  |
|--|---|---|---|---|--|
| <b>Eurostat Data Shop</b><br><b>Bruxelles/Brussel</b><br><b>Planistat Belgique</b><br>Rue du Commerce 124<br>Handelsstraat 124<br>B-1000 BRUXELLES / BRUSSEL<br>Tel. (32-2) 234 67 50<br>Fax (32-2) 234 67 51<br>E-mail: <a href="mailto:datashop@planistat.be">datashop@planistat.be</a><br>URL: <a href="http://www.datashop.org/">http://www.datashop.org/</a>  | <b>DANMARKS STATISTIK</b><br><b>Bibliotek og Information</b><br><b>Eurostat Data Shop</b><br>Sejrøgade 11<br>DK-2100 KØBENHAVN Ø<br>Tlf. (45) 39 17 30 30<br>Fax (45) 39 17 30 03<br>E-mail: <a href="mailto:bjb@dst.dk">bjb@dst.dk</a><br>Internet: <a href="http://www.dst.dk/bibliotek">http://www.dst.dk/bibliotek</a>  | <b>STATISTISCHES BUNDESAMT</b><br><b>Eurostat Data Shop Berlin</b><br>Otto-Braun-Straße 70-72<br>(Eingang: Karl-Marx-Allee)<br>D-10178 BERLIN<br>Tel. (49) 1888 644 94 27/28<br>Fax (49) 1888-644 94 30<br>E-Mail: <a href="mailto:datashop@destatis.de">datashop@destatis.de</a><br>URL: <a href="http://www.eu-datashop.de/">http://www.eu-datashop.de/</a> | <b>INE Eurostat Data Shop</b><br>Paseo de la Castellana, 183<br>Despacho 011B<br>Entrada por Estébanez Calderón<br>E-28046 MADRID<br>Tel. (34) 91 583 91 67/91 583 95 00<br>Fax (34) 91 583 03 57<br>E-mail: <a href="mailto:datashop.eurostat@ine.es">datashop.eurostat@ine.es</a><br>URL: <a href="http://www.datashop.org/">http://www.datashop.org/</a> | <b>INSEE Info Service</b><br><b>Eurostat Data Shop</b><br>195, rue de Bercy<br>Tour Gamma A<br>F-75582 PARIS CEDEX 12<br>Tél. (33) 1 53 17 88 44<br>Fax (33) 1 53 17 88 22<br>E-mail: <a href="mailto:datashop@insee.fr">datashop@insee.fr</a>  | <b>ISTAT</b><br><b>Centro di Informazione Statistica</b><br><b>Sede di Roma, Eurostat Data Shop</b><br>Via Cesare Balbo, 11a<br>I-00184 ROMA<br>Tel. (39) 06 46 73 31 02/06<br>Fax (39) 06 46 73 31 01/07<br>E-mail: <a href="mailto:dipdiff@istat.it">dipdiff@istat.it</a>  |
| ITALIA – Milano  | LUXEMBOURG  | NEDERLAND   | NORGE   | PORTUGAL  | SCHWEIZ/SUISSE/SVIZZERA  |
| <b>ISTAT</b><br><b>Ufficio Regionale per la Lombardia</b><br><b>Eurostat Data Shop</b><br>Via Fieno 3<br>I-20123 MILANO<br>Tel. (39) 02 80 61 32 460<br>Fax (39) 02 80 61 32 304<br>E-mail: <a href="mailto:mileuro@tin.it">mileuro@tin.it</a>   | <b>Eurostat Data Shop Luxembourg</b><br>46A, avenue J.F. Kennedy<br>BP 1452<br>L-1014 LUXEMBOURG<br>Tel. (352) 43 35-2251<br>Fax (352) 43 35-22221<br>E-mail: <a href="mailto:dslux@eurostat.datashop.lu">dslux@eurostat.datashop.lu</a><br>URL: <a href="http://www.datashop.org/">http://www.datashop.org/</a>  | <b>STATISTICS NETHERLANDS</b><br><b>Eurostat Data Shop-Voorburg</b><br>Postbus 4000<br>2270 JM VOORBURG<br>Nederland<br>Tel. (31-70) 337 49 00<br>Fax (31-70) 337 59 84<br>E-mail: <a href="mailto:datashop@cbs.nl">datashop@cbs.nl</a>   | <b>Statistics Norway</b><br><b>Library and Information Centre</b><br><b>Eurostat Data Shop</b><br>Kongens gate 6<br>Boks 8131 Dep.<br>N-0033 OSLO<br>Tel. (47) 21 09 46 42/43<br>Fax (47) 21 09 45 04<br>E-mail: <a href="mailto:Datashop@ssb.no">Datashop@ssb.no</a>   | <b>Eurostat Data Shop Lisboa</b><br><b>INE/Serviço de Difusão</b><br>Av. António José de Almeida, 2<br>P-1000-043 LISBOA<br>Tel. (351) 21 842 61 00<br>Fax (351) 21 842 63 64<br>E-mail: <a href="mailto:data.shop@ine.pt">data.shop@ine.pt</a> | <b>Statistisches Amt des Kantons</b><br><b>Zürich, Eurostat Data Shop</b><br>Bleicherweg 5<br>CH-8090 Zürich<br>Tel. (41) 1 225 12 12<br>Fax (41) 1 225 12 99<br>E-mail: <a href="mailto:datashop@statistik.zh.ch">datashop@statistik.zh.ch</a><br>Internet: <a href="http://www.statistik.zh.ch">http://www.statistik.zh.ch</a> |
| SUOMI/FINLAND  | SVERIGE   | UNITED KINGDOM  | UNITED STATES OF AMERICA  |   |  |
| <b>STATISTICS FINLAND</b><br><b>Eurostat Data Shop Helsinki</b><br><b>Tilastokirjasto</b><br>PL 2B<br>FIN-00022 Tilastokeskus<br>Työajakatu 13 B, 2.Kerros, Helsinki<br>P. (358-9) 17 34 22 21<br>F. (358-9) 17 34 22 79<br>Sähköposti: <a href="mailto:datashop@stat.fi">datashop@stat.fi</a><br>URL: <a href="http://www.tilastokeskus.fi/ttk/kk/datashop/">http://www.tilastokeskus.fi/ttk/kk/datashop/</a> | <b>STATISTICS SWEDEN</b><br><b>Information service</b><br><b>Eurostat Data Shop</b><br>Karlavägen 100 - Box 24 300<br>S-104 51 STOCKHOLM<br>Tfn (46-8) 50 69 48 01<br>Fax (46-8) 50 69 48 99<br>E-post: <a href="mailto:infoservice@scb.se">infoservice@scb.se</a><br>Internet: <a href="http://www.scb.se/info/datashop/eudatashop.asp">http://www.scb.se/info/datashop/eudatashop.asp</a> | <b>Eurostat Data Shop</b><br><b>Office for National Statistics</b><br>Room 1.015<br>Cardiff Road<br>Newport South Wales NP10 8XG<br>United Kingdom<br>Tel. (44-1633) 81 33 69<br>Fax (44-1633) 81 33 33<br>E-mail: <a href="mailto:eurostat.datashop@ons.gov.uk">eurostat.datashop@ons.gov.uk</a>   | <b>HAVER ANALYTICS</b><br><b>Eurostat Data Shop</b><br>60 East 42nd Street<br>Suite 3310<br>NEW YORK, NY 10165<br>USA<br>Tel. (1-212) 986 93 00<br>Fax (1-212) 986 69 81<br>E-mail: <a href="mailto:eurodata@haver.com">eurodata@haver.com</a>  |   |  |

Media Support Eurostat (for professional journalists only):  
 Bech Building Office A4/017 • L-2920 Luxembourg • Tel. (352) 4301 33408 • Fax (352) 4301 35349 • e-mail: [eurostat-mediasupport@cec.eu.int](mailto:eurostat-mediasupport@cec.eu.int)

## For information on methodology

Emile SIEBENALLER, Eurostat/D4, L-2920 Luxembourg, Tel. (352) 4301 32040, Fax (352) 4301 32839,

E-mail: [emile.siebenaller@cec.eu.int](mailto:emile.siebenaller@cec.eu.int)

ORIGINAL: French

Please visit our web site at [www.europa.eu.int/comm/eurostat/](http://www.europa.eu.int/comm/eurostat/) for further information!

A list of worldwide sales outlets is available at the **Office for Official Publications of the European Communities**.

2 rue Mercier – L-2985 Luxembourg  
 Tel. (352) 2929 42455 Fax (352) 2929 42758  
 URL: <http://publications.eu.int>  
 e-mail: [info-info-opoce@cec.eu.int](mailto:info-info-opoce@cec.eu.int)

BELGIQUE/BELGIË – DANMARK – DEUTSCHLAND – GREECE/ELLADA – ESPAÑA – FRANCE – IRELAND – ITALIA – LUXEMBOURG – NEDERLAND – ÖSTERREICH  
 PORTUGAL – SUOMI/FINLAND – SVERIGE – UNITED KINGDOM – ÍSLAND – NORGE – SCHWEIZ/SUISSE/SVIZZERA – BALGARIJA – ČESKÁ REPUBLIKA – CYPRUS  
 EESTI – HRVATSKA – MAGYARORSZÁG – MALTA – POLSKA – ROMÂNIA – RUSSIA – SLOVAKIA – SLOVENIA – TÜRKIYE – AUSTRALIA – CANADA – EGYPT – INDIA  
 ISRAËL – JAPAN – MALAYSIA – PHILIPPINES – SOUTH KOREA – THAILAND – UNITED STATES OF AMERICA

## Order form

I would like to subscribe to Statistics in focus (from 1.1.2002 to 31.12.2002):

(for the Data Shop and sales office addresses see above)

**Formula 1:** All 9 themes (approximately 180 issues)

Paper: EUR 360

Language required:  DE  EN  FR

**Formula 2:** One or more of the following nine themes:

Theme 1 'General statistics'

Theme 6 'External trade'

Theme 7 'Transport'

Theme 9 'Science and technology'

Paper: EUR 42

Theme 2 'Economy and finance'

Theme 3 'Population and social conditions'

Theme 4 'Industry, trade and services'

Theme 5 'Agriculture and fisheries'

Theme 8 'Environment and energy'

Paper: EUR 84

Language required:  DE  EN  FR

Statistics in focus can be downloaded (pdf file) free of charge from the Eurostat web site. You only need to register. For other solutions, contact your Data Shop.

Please send me a free copy of 'Eurostat mini-guide' (catalogue containing a selection of Eurostat products and services)

Language required:  DE  EN  FR

I would like a free subscription to 'Statistical References', the information letter on Eurostat products and services

Language required:  DE  EN  FR

Mr  Mrs  Ms

(Please use block capitals)

Surname: \_\_\_\_\_ Forename: \_\_\_\_\_

Company: \_\_\_\_\_ Department: \_\_\_\_\_

Function: \_\_\_\_\_

Address: \_\_\_\_\_

Post code: \_\_\_\_\_ Town: \_\_\_\_\_

Country: \_\_\_\_\_

Tel.: \_\_\_\_\_ Fax: \_\_\_\_\_

E-mail: \_\_\_\_\_

**Payment on receipt of invoice, preferably by:**

Bank transfer

Visa  Eurocard

Card No: \_\_\_\_\_ Expires on: \_\_\_\_/\_\_\_\_/\_\_\_\_

**Please confirm your intra-Community VAT number:**

If no number is entered, VAT will be automatically applied. Subsequent reimbursement will not be possible.