

Statistical aspects of the energy economy in 2009

This publication provides a first overview of the energy economy in 2009 based on monthly cumulated data for each EU Member State. Production and consumption trends are outlined for the principal energy commodities – oil, natural gas, solid fuels, nuclear and primary

electrical energy. Main indicators such as energy dependence rate and energy intensity are presented. In addition, heating degree days calculated on the basis of a common Eurostat methodology are also included.

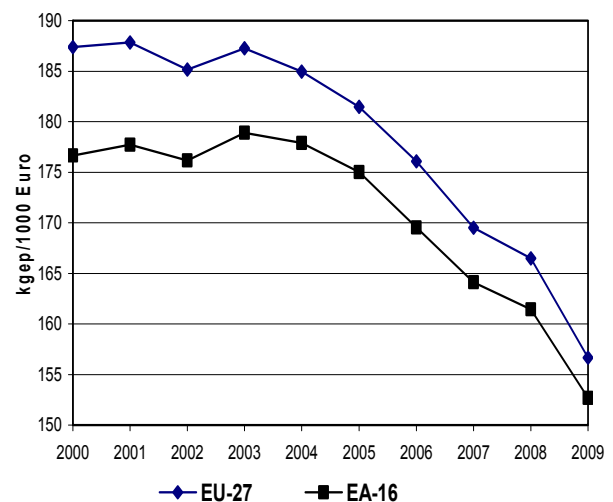
- Energy dependency fell by 5.7%
- Gross inland consumption fell by 5.5% in 2009
- Production of primary energy sources dropped for the third consecutive year
- Energy intensity dropped for the sixth consecutive year
- Russia was once again the main supplier of oil, natural gas and coal

Energy intensity

For the sixth consecutive year EU-27 energy intensity (gross inland consumption divided by gross domestic product) dropped while GDP continued a general upward trend over the same period. Exceptionally cold weather conditions may account for years registering high energy consumption.

Energy intensity is a measure of how much energy is used to produce a unit of economic output. The decoupling of increasing economic activity from increasing energy consumption is a goal for sustainable development.

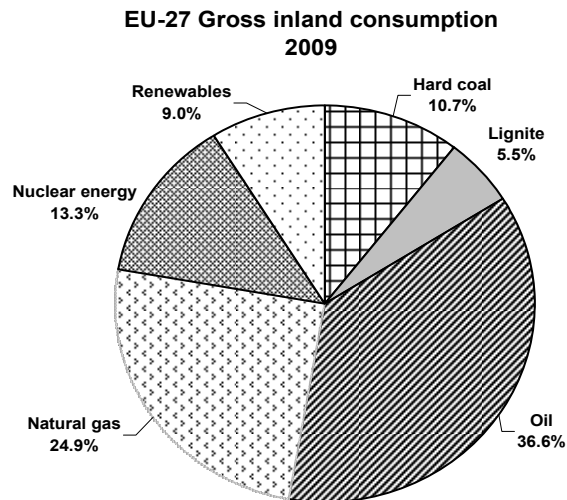
Figure 1: Energy intensity



Source: Eurostat ([tsien020](#))

Energy consumption trends

Figure 2



Source: Eurostat ([nrg_102m](#))

When compared to 2008, EU-27 gross inland consumption (GIC) dropped in 2009 to levels last seen in the mid 90's.

Belgium alone recorded an increase in GIC (+3.1%) while Cyprus remained stable. All other Member States showed a decrease with values ranging from -14.2% in Romania to -1.8% in Portugal.

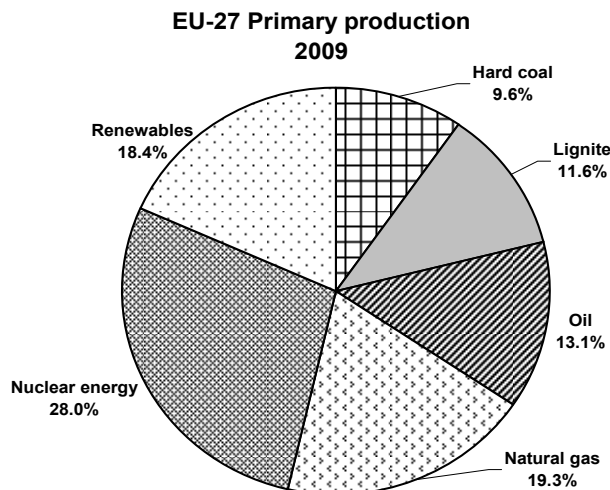
With a share of 36.6% EU-27 oil remained the fuel with the highest contribution to total gross inland consumption in 2009. The share of all other fuels remained more or less stable except for coal, the share of which dropped from 12.0% in 2008 to 10.7% in 2009. The consumption of coal dropped by 16.3% in 2009.

Production trends

Primary energy production dropped by 4.7% between 2008 and 2009, continuing the downward trend observed over the previous decade. Both natural gas (-10.1%) and hard coal (-9.2%) showed an important decrease. Renewable energy alone

recorded a considerable increase (+8.3%) and accounted for 18.4% of total EU-27 primary production, just behind natural gas with 19.3%. With 28% of total EU-27 primary production, nuclear energy continues to hold the largest share.

Figure 3



Source: Eurostat ([nrg_102m](#))

Summary energy balance
January - December

Million tonnes of oil equivalent

| | | Primary Production ⁽¹⁾ | Total Imports ⁽²⁾ | Total Exports ⁽²⁾ | Change in Stocks ⁽³⁾ | Gross Consumption | Bunkers | Gross Inland Consumption |
|------------------|-------------|--------------------------------------|---------------------------------|---------------------------------|------------------------------------|----------------------|---------|-----------------------------|
| EU-27 | 2008 | 831.3 | 1456.2 | 464.4 | -10.8 | 1815.2 | 54.0 | 1761.2 |
| | 2009 | 792.6 | 1378.8 | 444.2 | -16.4 | 1713.7 | 49.1 | 1664.6 |
| Euro area | 2008 | 446.6 | 1131.7 | 302.1 | -6.2 | 1272.2 | 48.0 | 1224.2 |
| | 2009 | 429.9 | 1077.4 | 294.7 | -8.4 | 1206.4 | 43.1 | 1163.3 |
| BE | 2008 | 13.0 | 77.6 | 26.5 | -1.6 | 62.8 | 9.5 | 53.3 |
| | 2009 | 14.1 | 70.0 | 22.9 | 0.6 | 62.2 | 7.2 | 55.0 |
| BG | 2008 | 10.1 | 15.0 | 4.2 | -0.5 | 20.4 | 0.0 | 20.4 |
| | 2009 | 9.7 | 11.6 | 3.5 | 0.1 | 17.9 | 0.1 | 17.7 |
| CZ | 2008 | 33.0 | 21.1 | 8.8 | -0.4 | 44.6 | 0.0 | 44.6 |
| | 2009 | 31.5 | 20.3 | 8.7 | -0.4 | 42.5 | 0.0 | 42.5 |
| DK | 2008 | 26.0 | 14.4 | 19.7 | -1.1 | 20.0 | 1.0 | 19.1 |
| | 2009 | 23.5 | 13.5 | 18.7 | -0.8 | 18.6 | 0.5 | 18.1 |
| DE | 2008 | 128.8 | 248.0 | 41.7 | 0.7 | 335.7 | 3.1 | 332.7 |
| | 2009 | 120.3 | 235.4 | 36.9 | -2.4 | 316.3 | 2.8 | 313.5 |
| EE | 2008 | 4.2 | 1.9 | 0.2 | 0.1 | 5.9 | 0.0 | 5.9 |
| | 2009 | 4.1 | 1.7 | 0.3 | -0.1 | 5.3 | 0.0 | 5.3 |
| IE | 2008 | 1.5 | 15.1 | 1.3 | -0.1 | 15.3 | 0.1 | 15.2 |
| | 2009 | 0.9 | 14.2 | 1.0 | -0.2 | 14.0 | 0.1 | 13.9 |
| EL | 2008 | 11.2 | 32.7 | 7.3 | -0.3 | 36.3 | 3.2 | 33.1 |
| | 2009 | 11.5 | 31.2 | 9.0 | 0.6 | 34.3 | 2.2 | 32.1 |
| ES | 2008 | 28.5 | 135.6 | 13.3 | -2.8 | 148.2 | 9.0 | 139.2 |
| | 2009 | 28.9 | 124.8 | 14.2 | -0.9 | 138.8 | 9.0 | 129.9 |
| FR | 2008 | 128.6 | 173.1 | 34.7 | -0.7 | 266.6 | 2.6 | 264.0 |
| | 2009 | 124.1 | 162.9 | 28.7 | -0.4 | 258.2 | 2.6 | 255.6 |
| IT | 2008 | 27.3 | 184.2 | 29.3 | -0.7 | 183.3 | 3.8 | 179.5 |
| | 2009 | 26.2 | 167.8 | 28.7 | 0.9 | 168.4 | 3.3 | 165.1 |
| CY | 2008 | 0.1 | 3.0 | 0.0 | 0.0 | 3.1 | 0.3 | 2.8 |
| | 2009 | 0.1 | 2.9 | 0.0 | 0.0 | 3.1 | 0.2 | 2.8 |
| LV | 2008 | 1.8 | 3.5 | 0.3 | 0.2 | 4.7 | 0.2 | 4.5 |
| | 2009 | 1.8 | 3.6 | 0.5 | -0.2 | 4.4 | 0.3 | 4.1 |
| LT | 2008 | 3.6 | 13.2 | 7.7 | 0.1 | 9.2 | 0.1 | 9.1 |
| | 2009 | 3.9 | 11.9 | 7.4 | 0.1 | 8.4 | 0.1 | 8.3 |
| LU | 2008 | 84 | 4.5 | 0.2 | 0.0 | 4.4 | 0.0 | 4.4 |
| | 2009 | 84 | 4.2 | 0.3 | 0.0 | 4.0 | 0.0 | 4.0 |
| HU | 2008 | 10.5 | 21.9 | 4.9 | -0.6 | 26.8 | 0.0 | 26.8 |
| | 2009 | 10.5 | 18.7 | 4.0 | -0.7 | 24.6 | 0.0 | 24.6 |
| MT | 2008 | 0.0 | 0.0 | 0.0 | 0.0 | 0.0 | 0.0 | 0.0 |
| | 2009 | 0.0 | 1.9 | 0.0 | -0.1 | 1.7 | 1.1 | 0.7 |
| NL | 2008 | 68.1 | 157.7 | 126.4 | -1.3 | 98.4 | 15.9 | 82.5 |
| | 2009 | 62.8 | 164.9 | 132.0 | -4.3 | 91.2 | 14.1 | 77.0 |
| AT | 2008 | 10.1 | 28.3 | 6.1 | -0.3 | 32.2 | 0.0 | 32.2 |
| | 2009 | 10.4 | 28.0 | 7.2 | -0.1 | 31.4 | 0.0 | 31.4 |
| PL | 2008 | 70.8 | 43.8 | 12.6 | -0.6 | 101.6 | 0.3 | 101.3 |
| | 2009 | 66.7 | 41.8 | 11.7 | -1.6 | 95.4 | 0.2 | 95.2 |
| PT | 2008 | 3.9 | 23.9 | 2.6 | 0.0 | 25.1 | 0.6 | 24.6 |
| | 2009 | 4.5 | 23.2 | 2.5 | -0.5 | 24.6 | 0.5 | 24.1 |
| RO | 2008 | 29.1 | 16.5 | 5.4 | -0.9 | 39.3 | 0.0 | 39.3 |
| | 2009 | 28.0 | 11.2 | 4.7 | -0.7 | 33.8 | 0.0 | 33.8 |
| SI | 2008 | 3.6 | 5.0 | 1.2 | 0.0 | 7.3 | 0.0 | 7.3 |
| | 2009 | 3.4 | 4.5 | 1.3 | 0.0 | 6.6 | 0.0 | 6.6 |
| SK | 2008 | 6.5 | 16.3 | 4.6 | 0.0 | 18.1 | 0.0 | 18.1 |
| | 2009 | 5.8 | 16.6 | 4.6 | -0.4 | 17.4 | 0.0 | 17.4 |
| FI | 2008 | 15.7 | 26.5 | 6.8 | -0.1 | 35.3 | 0.0 | 35.3 |
| | 2009 | 16.8 | 25.0 | 6.6 | -1.1 | 34.1 | 0.0 | 34.1 |
| SE | 2008 | 32.3 | 33.0 | 13.6 | -0.9 | 50.9 | 2.1 | 48.8 |
| | 2009 | 29.5 | 30.4 | 12.9 | -0.2 | 46.8 | 2.2 | 44.6 |
| UK | 2008 | 163.2 | 140.4 | 84.9 | 0.0 | 219.5 | 2.4 | 217.2 |
| | 2009 | 153.4 | 136.8 | 77.9 | -3.7 | 209.5 | 2.5 | 207.1 |

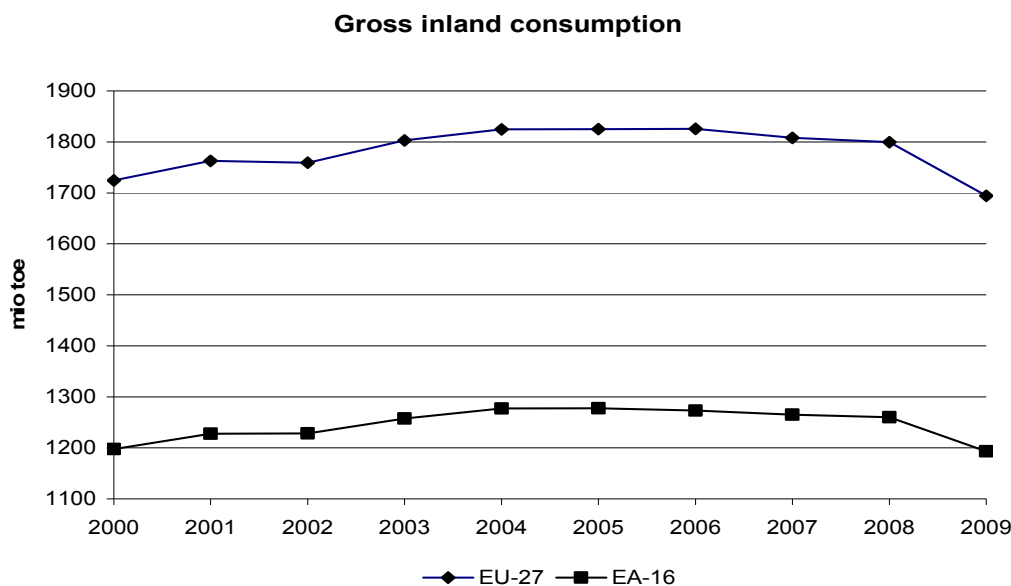
(1) Including hard coal recovered

(2) Including Intra-EU trade

(3) Opening stock minus closing stock. Negative values represent a stocks build-up during the reference year

Source: Eurostat ([nrg_102m](#))

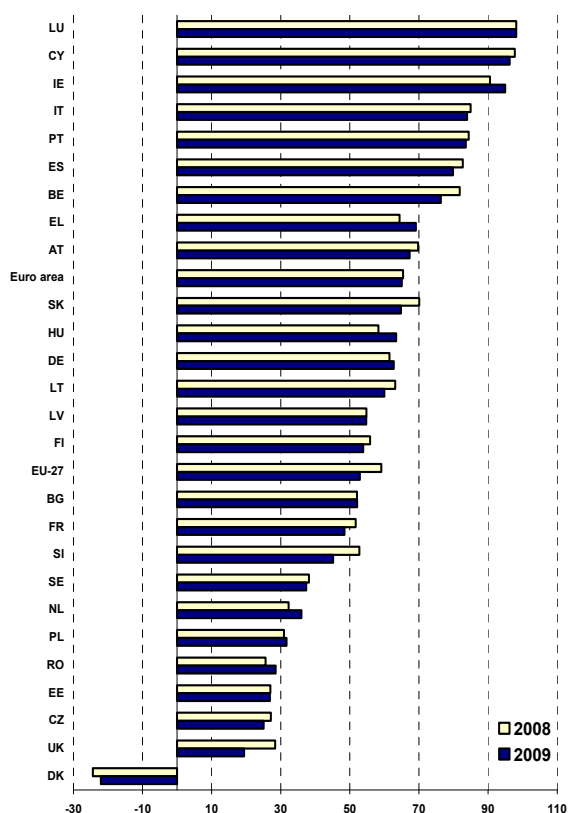
Figure 4



Source: Eurostat ([nrq_102m](#))

Energy dependency

Figure 5



Source: Eurostat ([tsdcc310](#))

When compared to 2008 EU-27 net imports (imports minus exports) fell (-5.7%) in 2009. The EU-27 total energy dependence rate (EDR) showed a slight drop, going from 54.8% in 2008 to 54.7% in 2009. However, these figures should be examined in the light of the prevailing economic

climate e.g. drop in demand or interruption of gas supply.

Denmark, continuing the trend set in 1999 as a net energy exporter, was the only Member State with a negative dependency in 2009. The United Kingdom who became a net importer in 2004, continued the trend in 2009 with an EDR of 28.5% rising from 25.7% in 2008.

When compared to 2008, Germany, Ireland, Latvia, Netherlands, Poland, Slovakia and the United Kingdom all show an increase in their EDR. Latvia showed the biggest increase rising from 58.2% in 2008 to 63.4% in 2009. France remained stable and all other countries experienced a drop. Romania experienced the highest overall decrease in EDR dropping from 28.4% in 2008 to 19.4% in 2009.

The EU-27 EDR of gas increased from 61.5% in 2008 to 64.3% in 2009. Denmark and the Netherlands both have a negative dependency. Of the six biggest gas consumers, EDR fell in Spain and Italy in 2009 but grew in the United Kingdom, Germany, France and Netherlands.

The European Union's main energy suppliers differ according to the type of energy being imported. In 2009 EU-27 imported natural gas from Russia (33.2%), Norway (28.8%) and Algeria (14.7%).

Crude oil and feedstocks came from Russia (30.8%), Norway (13.5%), Libya (8.5%), Saudi Arabia (5.1%), Kazakhstan (4.7%) and Iran (4.5%).

The main suppliers of coal remained Russia (30%), Columbia (17.8%), South Africa (15.9%) and USA (12.8%).

Climate profile - heating degree days

Actual heating degree days January - December

| | | Jan | Feb | Mar | Apr | May | Jun | Jul | Aug | Sep | Oct | Nov | Dec | Total |
|-------|------|-----|-----|-----|-----|-----|-----|-----|-----|-----|-----|-----|-----|-------|
| EU-27 | 2007 | 453 | 439 | 354 | 224 | 131 | 42 | 25 | 33 | 119 | 234 | 405 | 484 | 2943 |
| | 2008 | 466 | 404 | 402 | 270 | 134 | 57 | 23 | 38 | 136 | 222 | 372 | 484 | 3008 |
| BE | 2007 | 352 | 323 | 319 | 141 | 96 | 17 | 26 | 28 | 100 | 236 | 352 | 447 | 2437 |
| | 2008 | 378 | 359 | 373 | 273 | 59 | 53 | 18 | 7 | 126 | 234 | 343 | 485 | 2707 |
| BG | 2007 | 362 | 364 | 312 | 187 | 24 | 1 | 0 | 1 | 40 | 151 | 381 | 534 | 2357 |
| | 2008 | 587 | 413 | 274 | 153 | 67 | 0 | 1 | 0 | 78 | 123 | 298 | 436 | 2430 |
| CZ | 2007 | 455 | 411 | 382 | 222 | 120 | 15 | 21 | 21 | 163 | 308 | 484 | 574 | 3175 |
| | 2008 | 504 | 436 | 438 | 290 | 132 | 29 | 14 | 15 | 161 | 273 | 388 | 523 | 3204 |
| DK | 2007 | 404 | 441 | 355 | 250 | 195 | 48 | 34 | 30 | 128 | 280 | 386 | 437 | 2988 |
| | 2008 | 431 | 384 | 441 | 312 | 163 | 69 | 15 | 6 | 119 | 248 | 359 | 470 | 3017 |
| DE | 2007 | 404 | 380 | 346 | 177 | 109 | 19 | 23 | 22 | 123 | 276 | 420 | 500 | 2798 |
| | 2008 | 437 | 397 | 405 | 293 | 100 | 35 | 12 | 9 | 142 | 251 | 375 | 516 | 2971 |
| EE | 2007 | 595 | 767 | 439 | 380 | 210 | 48 | 8 | 35 | 186 | 335 | 524 | 514 | 4041 |
| | 2008 | 581 | 494 | 539 | 338 | 246 | 99 | 13 | 42 | 221 | 282 | 454 | 563 | 3873 |
| IE | 2007 | 341 | 325 | 337 | 214 | 202 | 97 | 81 | 72 | 108 | 180 | 260 | 335 | 2552 |
| | 2008 | 345 | 332 | 354 | 295 | 144 | 135 | 61 | 50 | 155 | 257 | 306 | 392 | 2827 |
| EL | 2007 | 284 | 272 | 221 | 113 | 4 | 0 | 0 | 0 | 3 | 51 | 196 | 347 | 1489 |
| | 2008 | 357 | 307 | 180 | 97 | 20 | 0 | 0 | 0 | 16 | 28 | 144 | 284 | 1434 |
| ES | 2007 | 344 | 239 | 258 | 150 | 68 | 11 | 1 | 2 | 14 | 91 | 261 | 350 | 1789 |
| | 2008 | 306 | 248 | 241 | 146 | 82 | 19 | 2 | 0 | 21 | 102 | 296 | 366 | 1829 |
| FR | 2007 | 351 | 288 | 315 | 107 | 83 | 17 | 9 | 12 | 72 | 187 | 345 | 425 | 2212 |
| | 2008 | 362 | 322 | 333 | 243 | 50 | 35 | 4 | 4 | 96 | 184 | 315 | 449 | 2397 |
| IT | 2007 | 313 | 268 | 245 | 79 | 21 | 4 | 2 | 3 | 23 | 108 | 264 | 385 | 1715 |
| | 2008 | 346 | 320 | 264 | 159 | 20 | 5 | 1 | 1 | 39 | 49 | 214 | 358 | 1776 |
| CY | 2007 | 208 | 160 | 122 | 34 | 0 | 0 | 0 | 0 | 0 | 0 | 29 | 141 | 694 |
| | 2008 | 244 | 199 | 54 | 11 | 0 | 0 | 0 | 0 | 0 | 0 | 7 | 126 | 640 |
| LV | 2007 | 559 | 746 | 411 | 376 | 181 | 31 | 8 | 31 | 171 | 331 | 514 | 530 | 3889 |
| | 2008 | 586 | 481 | 512 | 315 | 224 | 76 | 0 | 23 | 200 | 286 | 458 | 564 | 3725 |
| LT | 2007 | 532 | 700 | 391 | 350 | 164 | 21 | 15 | 33 | 147 | 320 | 513 | 538 | 3724 |
| | 2008 | 581 | 469 | 483 | 291 | 199 | 42 | 0 | 17 | 185 | 278 | 447 | 553 | 3543 |
| LU | 2007 | 408 | 355 | 351 | 125 | 108 | 26 | 41 | 40 | 130 | 253 | 409 | 493 | 2738 |
| | 2008 | 436 | 384 | 412 | 302 | 63 | 41 | 23 | 8 | 151 | 262 | 383 | 530 | 2993 |
| HU | 2007 | 406 | 362 | 292 | 156 | 39 | 0 | 0 | 0 | 88 | 222 | 415 | 572 | 2552 |
| | 2008 | 515 | 400 | 341 | 181 | 48 | 0 | 1 | 0 | 112 | 154 | 326 | 462 | 2541 |
| MT | 2007 | 64 | 88 | 78 | 14 | 0 | 0 | 0 | 0 | 0 | 3 | 11 | 73 | 332 |
| | 2008 | 56 | 114 | 47 | 11 | 0 | 0 | 0 | 0 | 0 | 0 | 0 | 80 | 307 |
| NL | 2007 | 345 | 338 | 311 | 161 | 109 | 13 | 19 | 19 | 92 | 244 | 334 | 438 | 2424 |
| | 2008 | 367 | 370 | 373 | 274 | 82 | 46 | 11 | 11 | 113 | 233 | 333 | 482 | 2694 |
| AT | 2007 | 473 | 401 | 385 | 189 | 111 | 15 | 29 | 23 | 165 | 301 | 479 | 601 | 3171 |
| | 2008 | 519 | 441 | 431 | 294 | 123 | 34 | 24 | 15 | 163 | 255 | 403 | 551 | 3252 |
| PL | 2007 | 453 | 506 | 359 | 268 | 119 | 13 | 15 | 23 | 132 | 302 | 481 | 551 | 3222 |
| | 2008 | 515 | 430 | 435 | 281 | 145 | 26 | 4 | 13 | 156 | 251 | 387 | 522 | 3164 |
| PT | 2007 | 274 | 187 | 186 | 108 | 41 | 3 | 0 | 0 | 2 | 26 | 159 | 272 | 1258 |
| | 2008 | 224 | 167 | 183 | 101 | 62 | 2 | 1 | 0 | 1 | 53 | 227 | 279 | 1299 |
| RO | 2007 | 430 | 413 | 322 | 210 | 38 | 0 | 1 | 1 | 74 | 215 | 445 | 600 | 2750 |
| | 2008 | 611 | 445 | 332 | 187 | 69 | 1 | 0 | 2 | 110 | 166 | 362 | 492 | 2776 |
| SI | 2007 | 433 | 358 | 327 | 159 | 66 | 3 | 7 | 0 | 109 | 251 | 401 | 563 | 2678 |
| | 2008 | 480 | 411 | 383 | 240 | 77 | 13 | 3 | 0 | 127 | 188 | 355 | 504 | 2782 |
| SK | 2007 | 472 | 420 | 347 | 228 | 83 | 4 | 5 | 4 | 145 | 284 | 469 | 615 | 3076 |
| | 2008 | 537 | 457 | 417 | 247 | 105 | 8 | 7 | 4 | 145 | 225 | 368 | 504 | 3023 |
| FI | 2007 | 817 | 928 | 558 | 477 | 318 | 150 | 46 | 87 | 296 | 402 | 632 | 600 | 5312 |
| | 2008 | 714 | 662 | 717 | 489 | 350 | 173 | 84 | 170 | 323 | 421 | 595 | 636 | 5336 |
| SE | 2007 | 754 | 748 | 538 | 429 | 316 | 138 | 88 | 115 | 291 | 411 | 608 | 632 | 5068 |
| | 2008 | 648 | 587 | 664 | 462 | 320 | 160 | 79 | 162 | 287 | 423 | 596 | 688 | 5076 |
| UK | 2007 | 357 | 344 | 348 | 221 | 216 | 100 | 81 | 83 | 130 | 220 | 316 | 403 | 2818 |
| | 2008 | 377 | 363 | 384 | 318 | 159 | 132 | 62 | 52 | 147 | 269 | 336 | 443 | 3043 |

Source: Eurostat ([nrq esdgr a](#)) and IPSC/Agrifish Unit/MARS-STAT Action

**Subdivision of principal aggregates
of the energy balance sheet**

Million tonnes of oil equivalent

| | EU-27 | | | EA-16 | | | BE | | | BG | | | CZ | | |
|---|--------|--------|-----------|--------|--------|-----------|--------|--------|-----------|--------|--------|-----------|--------|--------|-----------|
| | 2008 | 2009 | 2009/2008 | 2008 | 2009 | 2009/2008 | 2008 | 2009 | 2009/2008 | 2008 | 2009 | 2009/2008 | 2008 | 2009 | 2009/2008 |
| 1. Gross Inland Consumption ⁽¹⁾ | 1761.2 | 1664.6 | -5.5% | 1224.2 | 1163.3 | -5.0% | 53.3 | 55.0 | 3.1% | 20.4 | 17.7 | -13.0% | 44.6 | 42.5 | -4.7% |
| of which: | | | | | | | | | | | | | | | |
| Hard coal | 212.1 | 177.5 | -16.3% | 111.9 | 92.7 | -17.1% | 4.5 | 3.0 | -31.7% | 3.0 | 1.9 | -38.8% | 5.4 | 4.5 | -16.4% |
| Lignite | 95.4 | 91.0 | -4.6% | 51.6 | 49.6 | -3.8% | 0.0 | 0.0 | -71.4% | 4.9 | 4.7 | -5.1% | 14.2 | 13.7 | -3.7% |
| Crude oil & petroleum products | 638.3 | 609.9 | -4.5% | 479.4 | 455.8 | -4.9% | 22.7 | 23.4 | 3.3% | 5.1 | 4.6 | -10.1% | 9.8 | 9.5 | -2.7% |
| Natural gas | 440.0 | 414.3 | -5.8% | 298.6 | 288.1 | -3.5% | 11.9 | 14.2 | 19.2% | 2.8 | 2.1 | -25.3% | 7.1 | 6.7 | -6.3% |
| Nuclear energy | 228.6 | 222.2 | -2.8% | 179.6 | 170.9 | -4.8% | 11.2 | 12.3 | 9.7% | 4.0 | 3.9 | -3.0% | 6.9 | 7.1 | 2.5% |
| Hydro & wind plus electricity trade balance | 34.1 | 37.0 | 8.5% | 24.1 | 27.2 | 12.8% | 1.0 | 0.0 | -102.9% | -0.2 | -0.1 | 49.4% | -0.8 | -0.9 | -19.1% |
| Biomass & waste, solar & geothermal heat | 112.7 | 112.7e | | 79.0 | 79.0e | | 2.1 | 2.1e | | 0.7 | 0.7e | | 2.1 | 2.1e | |
| 2. Net Imports ⁽²⁾ | 995.0 | 937.8 | -5.7% | 832.0 | 785.0 | -5.6% | 51.4 | 47.5 | -7.6% | 10.8 | 8.1 | -25.1% | 12.1 | 11.4 | -5.3% |
| of which: | | | | | | | | | | | | | | | |
| Hard coal | 132.9 | 110.8 | -16.6% | 94.2 | 80.8 | -14.3% | 4.4 | 2.5 | -43.1% | 3.2 | 1.7 | -46.6% | -2.7 | -3.0 | -11.1% |
| Crude oil | 558.8 | 518.3 | -7.2% | 476.7 | 440.4 | -7.6% | 33.8 | 31.8 | -6.0% | 7.2 | 6.2 | -14.6% | 8.1 | 7.2 | -11.4% |
| Natural gas | 270.6 | 266.4 | -1.5% | 216.4 | 214.0 | -1.1% | 11.9 | 14.0 | 17.8% | 2.8 | 2.1 | -26.0% | 7.0 | 7.0 | -0.1% |
| Petroleum products | 11.2 | 23.5 | 109.6% | 25.7 | 32.5 | 26.6% | 0.9 | 0.9 | -0.7% | -2.0 | -1.5 | 27.7% | 1.4 | 1.9 | 39.2% |
| Electricity | 1.1 | 1.2 | 14.1% | 1.7 | 2.2 | 28.4% | 0.9 | -0.2 | -117.2% | -0.5 | -0.4 | 5.2% | -1.0 | -1.2 | -19.0% |
| Biomass & waste | 3.2 | 3.2e | | 2.4 | 2.4e | | 0.4 | 0.4e | | 0.0 | 0.0e | | -0.2 | -0.2e | |
| 3. Production of Primary Energy | 831.3 | 792.6 | -4.7% | 446.6 | 429.9 | -3.7% | 13.0 | 14.1 | 8.6% | 10.1 | 9.7 | -4.5% | 33.0 | 31.5 | -4.6% |
| of which: | | | | | | | | | | | | | | | |
| Hard coal ⁽³⁾ | 84.0 | 76.3 | -9.2% | 16.6 | 13.7 | -17.7% | - | - | - | 0.0 | 0.0 | 17.6% | 8.5 | 7.3 | -13.1% |
| Lignite | 94.8 | 91.8 | -3.1% | 50.8 | 50.2 | -1.1% | - | - | - | 4.9 | 4.6 | -5.5% | 14.6 | 14.0 | -4.1% |
| Crude oil and condensates | 111.0 | 104.0 | -6.3% | 17.2 | 16.0 | -6.5% | - | - | - | 0.0 | 0.0 | 0.0% | 0.4 | 0.4 | 2.0% |
| Natural gas | 170.1 | 152.9 | -10.1% | 83.2 | 77.2 | -7.2% | - | - | - | 0.2 | 0.0 | -93.7% | 0.2 | 0.1 | -8.3% |
| Nuclear energy | 228.6 | 222.2 | -2.8% | 179.6 | 170.9 | -4.8% | 11.2 | 12.3 | 9.7% | 4.0 | 3.9 | -3.0% | 6.9 | 7.1 | 2.5% |
| Hydro & wind | 33.0 | 35.7 | 8.3% | 22.4 | 25.1 | 11.6% | 0.1 | 0.1 | 37.6% | 0.2 | 0.3 | 43.4% | 0.2 | 0.2 | 18.3% |
| Biomass & waste, solar & geothermal heat | 109.8 | 109.8e | | 76.8 | 76.8e | | 1.7 | 1.7e | | 0.7 | 0.7e | | 2.3 | 2.3e | |
| 4. Energy Dependence Rate (EDR) | | | | | | | | | | | | | | | |
| Total | 54.8% | 54.7% | | 65.4% | 65.1% | | 81.8% | 76.4% | | 52.8% | 45.2% | | 27.0% | 26.8% | |
| of which: | | | | | | | | | | | | | | | |
| Crude oil & petroleum products | 84.6% | 84.6% | | 97.4% | 97.0% | | 103.6% | 99.6% | | 100.5% | 99.3% | | 97.2% | 95.8% | |
| Natural gas | 61.5% | 64.3% | | 72.5% | 74.3% | | 99.8% | 98.7% | | 99.8% | 98.8% | | 98.7% | 105.3% | |
| 5. Gross Inland Consumption Per Capita in kgoe | 3539.1 | 3331.1 | | 3742.4 | 3539.8 | | 4999.3 | 5115.0 | | 2667.3 | 2329.6 | | 4300.7 | 4064.3 | |

(1) GIC = primary production + recovered products + net imports + stock changes - bunkers

(2) Net Imports = Imports minus exports

(3) Including recovered products

e: Estimate

Source: Eurostat ([nqr 102m](#))

Subdivision of principal aggregates
of the energy balance sheet

| Million tonnes of oil equivalent | | | | | | | | | | | | | | | |
|---|---------|--------|-----------|--------|--------|-----------|--------|--------|-----------|--------|--------|-----------|--------|--------|-----------|
| | DK | | | DE | | | EE | | | IE | | | EL | | |
| | 2008 | 2009 | 2009/2008 | 2008 | 2009 | 2009/2008 | 2008 | 2009 | 2009/2008 | 2008 | 2009 | 2009/2008 | 2008 | 2009 | 2009/2008 |
| 1. Gross Inland Consumption ⁽¹⁾ | 19.1 | 18.1 | -5.1% | 332.7 | 313.5 | -5.8% | 5.9 | 5.3 | -9.9% | 15.2 | 13.9 | -8.7% | 33.1 | 32.1 | -2.9% |
| of which: | | | | | | | | | | | | | | | |
| Hard coal | 4.0 | 4.0 | 0.1% | 42.5 | 34.5 | -18.8% | 0.0 | 0.0 | -61.2% | 1.6 | 1.5 | -7.3% | 0.4 | 0.1 | -70.9% |
| Lignite | | | - | 37.3 | 36.1 | -3.1% | 3.5 | 3.3 | -4.9% | 0.6 | 0.0 | -100.0% | 9.8 | 9.7 | -1.0% |
| Crude oil & petroleum products | 7.3 | 6.6 | -10.0% | 115.9 | 109.2 | -5.8% | 1.1 | 0.9 | -22.9% | 7.9 | 7.4 | -6.6% | 17.8 | 17.3 | -3.1% |
| Natural gas | 4.0 | 3.9 | -3.1% | 77.0 | 76.4 | -0.7% | 0.7 | 0.5 | -31.3% | 4.5 | 4.4 | -4.3% | 3.5 | 3.0 | -14.0% |
| Nuclear energy | - | - | - | 35.8 | 32.5 | -9.1% | - | - | - | - | - | - | - | - | - |
| Hydro & wind plus electricity trade balance | 0.7 | 0.6 | -15.9% | 0.0 | 0.5 | 1162.5% | -0.1 | 0.0 | 139.4% | 0.3 | 0.4 | 24.4% | 0.5 | 1.0 | 105.2% |
| Biomass & waste, solar & geothermal heat | 3.0 | 3.0e | | 24.3 | 24.3e | | 0.6 | 0.6e | | 0.3 | 0.3e | | 1.2 | 1.2e | |
| 2. Net Imports ⁽²⁾ | -4.9 | -4.1 | 15.8% | 206.3 | 198.4 | -3.8% | 1.6 | 1.3 | -16.9% | 13.9 | 13.3 | -4.1% | 25.4 | 22.3 | -12.5% |
| of which: | | | | | | | | | | | | | | | |
| Hard coal | 4.4 | 3.9 | -10.8% | 27.3 | 23.3 | -14.5% | 0.0 | 0.0 | -61.2% | 1.5 | 1.7 | 7.1% | 0.4 | 0.1 | -86.2% |
| Crude oil | -6.3 | -5.0 | 19.7% | 105.3 | 97.9 | -7.0% | - | - | - | 3.2 | 2.7 | -16.2% | 18.2 | 16.7 | -8.5% |
| Natural gas | -4.8 | -3.6 | 25.4% | 64.7 | 67.3 | 4.0% | 0.7 | 0.5 | -31.3% | 4.1 | 4.0 | -2.5% | 3.5 | 3.0 | -15.5% |
| Petroleum products | 1.6 | 0.4 | -72.9% | 9.2 | 10.4 | 12.8% | 1.0 | 0.9 | -10.9% | 4.9 | 4.8 | -1.6% | 0.7 | -0.6 | -183.0% |
| Electricity | 0.1 | 0.0 | -76.8% | -1.7 | -1.1 | 38.9% | -0.1 | 0.0 | 110.0% | 0.0 | 0.1 | 69.2% | 0.3 | 0.4 | 32.0% |
| Biomass & waste | 0.4 | 0.4e | | -0.1 | -0.1e | | -0.1 | -0.1e | | 0.0 | 0.0e | | 0.0 | 0.0e | |
| 3. Production of Primary Energy | 26.0 | 23.5 | -9.5% | 128.8 | 120.3 | -6.6% | 4.2 | 4.1 | -3.7% | 1.5 | 0.9 | -40.3% | 11.2 | 11.5 | 2.5% |
| of which: | | | | | | | | | | | | | | | |
| Hard coal ⁽³⁾ | - | - | - | 12.4 | 9.7 | -21.8% | - | - | - | - | 0.0 | - | - | - | - |
| Lignite | - | - | - | 37.8 | 36.6 | -3.1% | 3.5 | 3.3 | -4.7% | 0.6 | 0.0 | -100.0% | 9.8 | 9.7 | -1.0% |
| Crude oil and condensates | 14.0 | 12.9 | -8.2% | 4.9 | 4.5 | -8.7% | - | - | - | - | - | - | 0.1 | 0.1 | -11.3% |
| Natural gas | 8.8 | 7.5 | -14.8% | 11.7 | 11.0 | -6.5% | - | - | - | 0.4 | 0.3 | -21.4% | 0.0 | 0.0 | -37.5% |
| Nuclear energy | - | - | - | 35.8 | 32.5 | -9.1% | - | - | - | - | - | - | - | - | - |
| Hydro & wind | 0.6 | 0.6 | -3.0% | 1.7 | 1.6 | -6.8% | 0.0 | 0.0 | 38.5% | 0.3 | 0.3 | 18.5% | 0.2 | 0.6 | 218.1% |
| Biomass & waste, solar & geothermal heat | 2.6 | 2.6e | | 24.5 | 24.5e | | 0.7 | 0.7e | | 0.2 | 0.2e | | 1.2 | 1.2e | |
| 4. Energy Dependence Rate (EDR) | | | | | | | | | | | | | | | |
| Total | -24.4% | -22.1% | | 61.4% | 62.7% | | 27.2% | 25.1% | | 90.6% | 94.9% | | 70.1% | 64.8% | |
| of which: | | | | | | | | | | | | | | | |
| Crude oil & petroleum products | -61.3% | -69.4% | | 96.2% | 96.7% | | 93.2% | 107.9% | | 101.2% | 100.1% | | 101.3% | 96.9% | |
| Natural gas | -118.3% | -91.1% | | 84.0% | 88.0% | | 100.0% | 100.0% | | 90.7% | 92.4% | | 101.5% | 99.8% | |
| 5. Gross Inland Consumption Per Capita in kgoe | 3480.3 | 3281.7 | | 4046.2 | 3823.4 | | 4403.4 | 3971.6 | | 3459.2 | 3124.5 | | 2952.3 | 3124.5 | |

(1) GIC = primary production + recovered products + net imports + stock changes - bunkers

(2) Net Imports = Imports minus exports

(3) Including recovered products

e: Estimate

 Source: Eurostat ([ngr 102m](#))

**Subdivision of principal aggregates
of the energy balance sheet**

Million tonnes of oil equivalent

| | ES | | | FR | | | IT | | | CY | | | LV | | |
|---|--------|--------|-----------|--------|--------|-----------|--------|--------|-----------|--------|--------|-----------|--------|--------|-----------|
| | 2008 | 2009 | 2009/2008 | 2008 | 2009 | 2009/2008 | 2008 | 2009 | 2009/2008 | 2008 | 2009 | 2009/2008 | 2008 | 2009 | 2009/2008 |
| 1. Gross Inland Consumption ⁽¹⁾ | 139.2 | 129.9 | -6.7% | 264.0 | 255.6 | -3.2% | 179.5 | 165.1 | -8.0% | 2.8 | 2.8 | 0.0% | 4.5 | 4.1 | -8.7% |
| of which: | | | | | | | | | | | | | | | |
| Hard coal | 13.1 | 11.0 | -16.1% | 12.8 | 11.2 | -13.0% | 16.9 | 12.4 | -26.8% | 0.0 | 0.0 | -50.0% | 0.1 | 0.1 | -14.7% |
| Lignite | 0.0 | - | - | - | - | - | - | - | - | - | - | - | 0.0 | 0.0 | -33.3% |
| Crude oil & petroleum products | 67.7 | 63.7 | -6.0% | 89.7 | 87.6 | -2.4% | 75.6 | 70.0 | -7.3% | 2.7 | 2.7 | 0.4% | 1.5 | 1.3 | -15.4% |
| Natural gas | 34.8 | 31.2 | -10.2% | 39.6 | 38.2 | -3.8% | 69.4 | 64.0 | -7.8% | - | - | - | 1.3 | 1.2 | -8.0% |
| Nuclear energy | 14.2 | 12.9 | -9.3% | 105.7 | 101.2 | -4.3% | - | - | - | - | - | - | - | - | - |
| Hydro & wind plus electricity trade balance | 3.1 | 4.9 | 55.9% | 1.9 | 3.4 | 79.3% | 7.4 | 8.5 | 14.9% | - | - | - | 0.5 | 0.4 | -9.0% |
| Biomass & waste, solar & geothermal heat | 6.2 | 6.2e | | 14.2 | 14.2e | | 10.2 | 10.2e | | 0.1 | 0.1e | | 1.1 | 1.1e | |
| 2. Net Imports ⁽²⁾ | 122.6 | 110.8 | -9.6% | 138.8 | 134.6 | -3.1% | 155.7 | 141.3 | -9.2% | 3.0 | 3.0 | -2.6% | 2.8 | 2.8 | 1.0% |
| of which: | | | | | | | | | | | | | | | |
| Hard coal | 11.4 | 9.2 | -19.7% | 13.8 | 10.3 | -25.4% | 16.6 | 12.8 | -23.1% | 0.0 | 0.0 | -38.5% | 0.1 | 0.1 | -23.1% |
| Crude oil | 58.5 | 52.3 | -10.6% | 82.6 | 71.3 | -13.6% | 81.1 | 75.6 | -6.8% | - | - | - | - | - | - |
| Natural gas | 35.1 | 30.9 | -12.1% | 38.8 | 39.0 | 0.6% | 62.8 | 56.6 | -9.9% | - | - | - | 1.1 | 1.4 | 27.9% |
| Petroleum products | 16.5 | 15.3 | -7.1% | 6.3 | 15.0 | 139.6% | -14.9 | -12.5 | 16.4% | 3.0 | 2.9 | -2.3% | 1.7 | 1.5 | -9.9% |
| Electricity | -1.0 | -0.7 | 26.6% | -4.2 | -2.2 | 46.4% | 3.4 | 3.8 | 12.2% | - | - | - | 0.2 | 0.1 | -31.8% |
| Biomass & waste | 0.2 | 0.2e | | 0.3 | 0.3e | | 0.7 | 0.7e | | 0.0 | 0.0e | | -0.4 | -0.4e | |
| 3. Production of Primary Energy | 28.5 | 28.9 | 1.6% | 128.6 | 124.1 | -3.5% | 27.3 | 26.2 | -3.8% | 0.1 | 0.1 | 0.0% | 1.8 | 1.8 | 1.6% |
| of which: | | | | | | | | | | | | | | | |
| Hard coal ⁽³⁾ | 4.1 | 3.9 | -5.1% | 0.1 | 0.1 | -22.2% | - | - | - | - | - | - | - | - | - |
| Lignite | 0.0 | - | - | - | - | - | - | - | - | - | - | - | 0.0 | 0.0 | - |
| Crude oil and condensates | 0.1 | 0.6 | 356.1% | 2.1 | 2.6 | 25.9% | 6.3 | 5.4 | -14.4% | - | - | - | - | - | - |
| Natural gas | 0.0 | 0.0 | -14.3% | 0.8 | 0.7 | -4.3% | 7.5 | 6.6 | -10.8% | - | - | - | - | - | - |
| Nuclear energy | 14.2 | 12.9 | -9.3% | 105.7 | 101.2 | -4.3% | - | - | - | - | - | - | - | - | - |
| Hydro & wind | 4.1 | 5.6 | 36.7% | 6.0 | 5.6 | -7.1% | 4.0 | 4.7 | 17.0% | - | - | - | 0.3 | 0.3 | 9.6% |
| Biomass & waste, solar & geothermal heat | 5.9 | 5.9e | | 13.8 | 13.8e | | 9.5 | 9.5e | | 0.1 | 0.1e | | 1.5 | 1.5e | |
| 4. Energy Dependence Rate (EDR) | | | | | | | | | | | | | | | |
| Total | 82.7% | 79.8% | | 52.1% | 52.1% | | 84.9% | 83.9% | | 97.7% | 96.3% | | 58.2% | 63.4% | |
| of which: | | | | | | | | | | | | | | | |
| Crude oil & petroleum products | 100.3% | 98.2% | | 97.0% | 96.4% | | 91.0% | 92.1% | | 100.2% | 98.6% | | 101.0% | 100.4% | |
| Natural gas | 101.0% | 98.9% | | 97.9% | 102.3% | | 90.5% | 88.5% | | - | - | | 82.1% | 114.3% | |
| 5. Gross Inland Consumption Per Capita in kgoe | 3073.3 | 2833.8 | | 4125.8 | 3972.1 | | 3010.9 | 2749.5 | | 3607.1 | 3569.6 | | 1988.6 | 1822.6 | |

(1) GIC = primary production + recovered products + net imports + stock changes - bunkers

(2) Net Imports = Imports minus exports

(3) Including recovered products

e: Estimate

Source: Eurostat ([nrq_102m](#))

Subdivision of principal aggregates of the energy balance sheet

| Million tonnes of oil equivalent | | | | | | | | | | | | | | | |
|---|--------|--------|-----------|--------|--------|-----------|--------|--------|-----------|------|--------|-----------|--------|--------|-----------|
| | LT | | | LU | | | HU | | | MT | | | NL | | |
| | 2008 | 2009 | 2009/2008 | 2008 | 2009 | 2009/2008 | 2008 | 2009 | 2009/2008 | 2008 | 2009 | 2009/2008 | 2008 | 2009 | 2009/2008 |
| 1. Gross Inland Consumption ⁽¹⁾ | 9.1 | 8.3 | -9.5% | 4.4 | 4.0 | -9.3% | 26.8 | 24.6 | -8.0% | - | 0.7 | - | 82.5 | 77.0 | -6.7% |
| of which: | | | | | | | | | | | | | | | |
| Hard coal | 0.2 | 0.2 | -27.6% | 0.1 | 0.1 | -9.2% | 1.0 | 0.7 | -28.2% | - | - | - | 7.7 | 7.1 | -8.2% |
| Lignite | 0.0 | 0.0 | -20.0% | - | - | - | 2.0 | 1.8 | -11.0% | - | - | - | - | - | - |
| Crude oil & petroleum products | 3.0 | 2.5 | -15.7% | 2.8 | 2.4 | -13.6% | 7.3 | 6.9 | -4.8% | - | 0.7 | - | 32.9 | 30.3 | -8.2% |
| Natural gas | 2.6 | 2.2 | -15.9% | 1.1 | 1.1 | 5.3% | 10.8 | 9.1 | -15.8% | - | - | - | 36.0 | 34.7 | -3.6% |
| Nuclear energy | 2.6 | 2.8 | 9.4% | - | - | - | 3.7 | 4.0 | 7.1% | - | - | - | 1.0 | 1.0 | 1.5% |
| Hydro & wind plus electricity trade balance | 0.0 | -0.2 | -386.0% | 0.4 | 0.3 | -20.5% | 0.4 | 0.5 | 36.6% | - | - | - | 1.7 | 0.8 | -52.3% |
| Biomass & waste, solar & geothermal heat | 0.8 | 0.8e | - | 0.1 | 0.1e | - | 1.6 | 1.6e | - | - | - | - | 3.1 | 3.1e | - |
| 2. Net Imports ⁽²⁾ | 5.5 | 4.4 | -18.5% | 4.4 | 4.0 | -9.3% | 16.9 | 14.8 | -12.7% | - | 1.9 | - | 31.8 | 32.8 | 3.2% |
| of which: | | | | | | | | | | | | | | | |
| Hard coal | 0.2 | 0.1 | -43.5% | 0.1 | 0.1 | -9.2% | 1.2 | 0.8 | -33.0% | - | - | - | 7.7 | 9.3 | 19.9% |
| Crude oil | 9.0 | 8.3 | -7.8% | - | - | - | 6.3 | 5.5 | -12.5% | - | - | - | 56.5 | 57.2 | 1.2% |
| Natural gas | 2.5 | 2.2 | -12.4% | 1.1 | 1.1 | 5.3% | 9.4 | 7.9 | -15.9% | - | - | - | -25.4 | -22.2 | 12.3% |
| Petroleum products | -6.5 | -6.2 | 4.6% | 2.8 | 2.4 | -13.4% | -0.6 | -0.1 | 81.5% | - | 1.9 | - | -8.8 | -12.3 | -39.5% |
| Electricity | -0.1 | -0.3 | -207.3% | 0.4 | 0.3 | -21.2% | 0.3 | 0.5 | 38.2% | - | - | - | 1.4 | 0.4 | -68.9% |
| Biomass & waste | 0.0 | 0.0e | - | 0.0 | 0.0e | - | 0.0 | 0.0e | - | - | - | - | 0.5 | 0.5e | - |
| 3. Production of Primary Energy | 3.6 | 3.9 | 6.1% | 0.1 | 0.1 | 0.0% | 10.5 | 10.5 | 0.7% | - | - | - | 68.1 | 62.8 | -7.7% |
| of which: | | | | | | | | | | | | | | | |
| Hard coal ⁽³⁾ | - | - | - | - | - | - | - | - | - | - | - | - | - | - | - |
| Lignite | 0.0 | 0.0 | -18.8% | - | - | - | 1.7 | 1.6 | -4.4% | - | - | - | - | - | - |
| Crude oil and condensates | 0.2 | 0.2 | -9.1% | - | - | - | 1.4 | 1.3 | -5.6% | - | - | - | 2.5 | 1.7 | -34.8% |
| Natural gas | - | - | - | - | - | - | 2.0 | 2.0 | -2.4% | - | - | - | 61.4 | 57.0 | -7.2% |
| Nuclear energy | 2.6 | 2.8 | 9.4% | - | - | - | 3.7 | 4.0 | 7.1% | - | - | - | 1.0 | 1.0 | 1.5% |
| Hydro & wind | 0.0 | 0.0 | 12.8% | 0.0 | 0.0 | 0.0% | 0.0 | 0.0 | 22.2% | - | - | - | 0.4 | 0.4 | 8.0% |
| Biomass & waste, solar & geothermal heat | 0.8 | 0.8e | - | 0.1 | 0.1e | - | 1.6 | 1.6e | - | - | - | - | 2.8 | 2.8e | - |
| 4. Energy Dependence Rate (EDR) | | | | | | | | | | | | | | | |
| Total | 59.1% | 52.9% | | 98.2% | 98.1% | | 63.2% | 60.0% | | - | 106.1% | | 32.3% | 36.0% | |
| of which: | | | | | | | | | | | | | | | |
| Crude oil & petroleum products | 91.2% | 90.0% | | 100.1% | 100.3% | | 80.5% | 80.3% | | - | 106.4% | | 97.6% | 101.1% | |
| Natural gas | 96.3% | 100.3% | | 100.0% | 100.0% | | 86.6% | 86.6% | | - | - | | -70.4% | -64.1% | |
| 5. Gross Inland Consumption Per Capita in kgoe | 2713.6 | 2466.9 | | 9186.0 | 8159.9 | | 2663.9 | 2453.0 | | - | 1630.4 | | 5031.5 | 4673.2 | |

(1) GIC = primary production + recovered products + net imports + stock changes - bunkers

(2) Net Imports = Imports minus exports

(3) Including recovered products

e: Estimate

Source: Eurostat ([nrq_102m](#))

Subdivision of principal aggregates of the energy balance sheet

Million tonnes of oil equivalent

| | AT | | | PL | | | PT | | | RO | | | SI | | |
|---|--------|--------|-----------|--------|--------|-----------|--------|--------|-----------|--------|--------|-----------|--------|--------|-----------|
| | 2008 | 2009 | 2009/2008 | 2008 | 2009 | 2009/2008 | 2008 | 2009 | 2009/2008 | 2008 | 2009 | 2009/2008 | 2008 | 2009 | 2009/2008 |
| 1. Gross Inland Consumption ⁽¹⁾ | 32.2 | 31.4 | -2.4% | 101.3 | 95.2 | -6.1% | 24.6 | 24.1 | -1.8% | 39.3 | 33.8 | -14.2% | 7.3 | 6.6 | -9.6% |
| of which: | | | | | | | | | | | | | | | |
| Hard coal | 3.1 | 2.6 | -16.9% | 46.1 | 41.4 | -10.2% | 2.6 | 2.9 | 13.4% | 2.5 | 1.0 | -61.2% | - | - | - |
| Lignite | 0.0 | 0.0 | -31.0% | 12.3 | 11.8 | -3.5% | - | - | - | 6.7 | 5.9 | -12.2% | 1.3 | 1.3 | -2.8% |
| Crude oil & petroleum products | 13.3 | 13.5 | 0.9% | 24.6 | 23.8 | -3.4% | 13.2 | 12.1 | -8.1% | 10.1 | 8.3 | -17.6% | 2.9 | 2.5 | -14.0% |
| Natural gas | 7.2 | 7.1 | -1.9% | 12.5 | 12.3 | -2.0% | 4.1 | 4.2 | 1.9% | 12.0 | 10.4 | -13.4% | 0.8 | 0.8 | -3.7% |
| Nuclear energy | - | - | - | - | - | - | - | - | - | 2.9 | 3.0 | 4.7% | 1.5 | 1.3 | -10.1% |
| Hydro & wind plus electricity trade balance | 3.4 | 3.2 | -6.7% | 0.5 | 0.6 | 20.0% | 1.3 | 1.5 | 15.9% | 1.1 | 1.2 | 4.4% | 0.2 | 0.1 | -33.5% |
| Biomass & waste, solar & geothermal heat | 5.1 | 5.1e | | 5.4 | 5.4e | | 3.3 | 3.3e | | 4.0 | 4.0e | | 0.5 | 0.5e | |
| 2. Net Imports ⁽²⁾ | 22.5 | 21.1 | -5.9% | 31.4 | 30.3 | -3.7% | 21.2 | 20.6 | -2.9% | 11.2 | 6.6 | -41.3% | 3.8 | 3.2 | -15.1% |
| of which: | | | | | | | | | | | | | | | |
| Hard coal | 2.1 | 2.1 | -2.4% | 1.6 | 1.2 | -24.5% | 2.3 | 3.1 | 32.0% | 2.0 | 0.6 | -67.4% | - | - | - |
| Crude oil | 7.9 | 7.4 | -5.6% | 20.5 | 19.9 | -3.2% | 12.0 | 10.4 | -12.8% | 8.4 | 6.9 | -18.1% | - | - | - |
| Natural gas | 6.3 | 6.0 | -3.6% | 9.1 | 8.1 | -11.0% | 4.1 | 4.3 | 3.0% | 3.7 | 1.7 | -54.7% | 0.8 | 0.8 | -3.7% |
| Petroleum products | 4.2 | 4.1 | -1.2% | 2.7 | 3.0 | 10.7% | 1.3 | 1.6 | 31.3% | -3.3 | -2.9 | 11.9% | 3.0 | 2.5 | -14.4% |
| Electricity | 0.4 | 0.1 | -84.0% | -0.1 | -0.2 | -79.0% | 0.8 | 0.4 | -49.4% | -0.4 | -0.2 | 45.8% | -0.1 | -0.3 | -88.5% |
| Biomass & waste | 0.3 | 0.3e | | 0.2 | 0.2e | | -- | -- | | 0.1 | 0.1e | 0.0% | 0.0 | 0.0e | |
| 3. Production of Primary Energy | 10.1 | 10.4 | 3.0% | 70.8 | 66.7 | -5.7% | 3.9 | 4.5 | 15.8% | 29.1 | 28.0 | -4.0% | 3.6 | 3.4 | -3.4% |
| of which: | | | | | | | | | | | | | | | |
| Hard coal ⁽³⁾ | - | - | - | 48.3 | 44.7 | -7.4% | - | - | - | - | - | - | - | - | - |
| Lignite | - | - | - | 12.4 | 11.8 | -4.1% | - | - | - | 6.7 | 5.9 | -11.9% | 1.2 | 1.2 | -2.0% |
| Crude oil and condensates | 0.9 | 1.0 | 6.1% | 0.7 | 0.6 | -13.9% | - | - | - | 4.8 | 4.5 | -6.1% | - | - | - |
| Natural gas | 1.3 | 1.4 | 8.9% | 3.7 | 3.7 | 0.1% | - | - | - | 9.4 | 9.3 | -1.1% | - | - | - |
| Nuclear energy | - | - | - | - | - | - | - | - | - | 2.9 | 3.0 | 4.7% | 1.5 | 1.3 | -10.1% |
| Hydro & wind | 3.0 | 3.1 | 4.3% | 0.6 | 0.7 | 30.9% | 0.5 | 1.1 | 117.2% | 1.5 | 1.4 | -8.1% | 0.3 | 0.4 | 15.7% |
| Biomass & waste, solar & geothermal heat | 4.9 | 4.9e | | 5.2 | 5.2e | | 3.4 | 3.4e | | 3.9 | 3.9e | 0.0% | 0.5 | 0.5e | |
| 4. Energy Dependence Rate (EDR) | | | | | | | | | | | | | | | |
| Total | 69.8% | 67.3% | | 30.9% | 31.7% | | 84.4% | 83.6% | | 28.4% | 19.4% | | 51.6% | 48.5% | |
| of which: | | | | | | | | | | | | | | | |
| Crude oil & petroleum products | 94.0% | 90.5% | | 97.0% | 100.5% | | 101.2% | 101.8% | | 50.7% | 48.0% | | 100.8% | 100.3% | |
| Natural gas | 86.6% | 85.1% | | 73.0% | 66.3% | | 100.3% | 101.3% | | 30.6% | 16.0% | | 100.0% | 100.0% | |
| 5. Gross Inland Consumption Per Capita in kgoe | 3871.5 | 3761.5 | | 2658.2 | 2496.1 | | 2314.3 | 2270.9 | | 1827.3 | 1570.4 | | 3631.8 | 3248.5 | |

(1) GIC = primary production + recovered products + net imports + stock changes - bunkers

(2) Net Imports = Imports minus exports

(3) Including recovered products

e: Estimate

Source: Eurostat ([nrq 102m](#))

| Subdivision of principal aggregates of the energy balance sheet | | | | | | | | | | | | |
|--|--------|--------|-----------|--------|--------|-----------|--------|--------|-----------|--------|--------|-----------|
| Million tonnes of oil equivalent | | | | | | | | | | | | |
| | SK | | | FI | | | SE | | | UK | | |
| | 2008 | 2009 | 2009/2008 | 2008 | 2009 | 2009/2008 | 2008 | 2009 | 2009/2008 | 2008 | 2009 | 2009/2008 |
| 1. Gross Inland Consumption ⁽¹⁾ | 18.1 | 17.4 | -3.9% | 35.3 | 34.1 | -3.4% | 48.8 | 44.6 | -8.5% | 217.2 | 207.1 | -4.6% |
| of which: | | | | | | | | | | | | |
| Hard coal | 3.2 | 2.8 | -11.3% | 3.4 | 3.6 | 5.0% | 2.1 | 1.2 | -43.4% | 35.7 | 29.9 | -16.2% |
| Lignite | 1.0 | 0.9 | -8.3% | 1.6 | 1.6 | 0.1% | 0.3 | 0.3 | 1.2% | - | - | - |
| Crude oil & petroleum products | 3.7 | 3.4 | -7.6% | 10.4 | 9.7 | -7.0% | 13.6 | 12.3 | -9.6% | 75.5 | 77.5 | 2.7% |
| Natural gas | 4.7 | 5.3 | 14.4% | 4.0 | 3.5 | -12.3% | 0.8 | 1.1 | 34.5% | 86.6 | 76.8 | -11.3% |
| Nuclear energy | 4.6 | 3.8 | -16.9% | 5.7 | 5.9 | 4.1% | 16.0 | 13.5 | -15.9% | 12.8 | 16.9 | 31.8% |
| Hydro & wind plus electricity trade balance | 0.3 | 0.4 | 35.6% | 2.6 | 2.2 | -15.7% | 5.9 | 6.3 | 5.7% | 2.0 | 1.4 | -28.2% |
| Biomass & waste, solar & geothermal heat | 0.7 | 0.7e | | 7.7 | 7.7e | | 9.9 | 9.9e | | 4.5 | 4.5e | |
| 2. Net Imports ⁽²⁾ | 11.6 | 12.0 | 3.3% | 19.7 | 18.4 | -6.8% | 19.4 | 17.5 | -10.0% | 56.3 | 59.7 | 6.1% |
| of which: | | | | | | | | | | | | |
| Hard coal | 3.1 | 2.8 | -10.2% | 3.4 | 3.7 | 8.4% | 2.0 | 1.3 | -35.2% | 26.6 | 23.2 | -12.8% |
| Crude oil | 5.9 | 5.7 | -2.8% | 11.8 | 11.3 | -3.6% | 21.0 | 19.0 | -9.8% | 7.8 | 10.1 | 30.4% |
| Natural gas | 4.5 | 5.7 | 27.8% | 4.0 | 3.5 | -12.3% | 0.8 | 1.1 | 34.5% | 21.9 | 24.0 | 9.8% |
| Petroleum products | -2.3 | -2.6 | -13.2% | -0.9 | -1.4 | -50.5% | -4.6 | -4.4 | 5.2% | -5.8 | -1.7 | 71.3% |
| Electricity | 0.0 | 0.1 | 290.0% | 1.1 | 1.1 | -4.1% | -0.2 | 0.4 | 338.5% | 0.9 | 0.2 | -74.1% |
| Biomass & waste | 0.0 | 0.0e | | 0.0 | 0.0e | | - | - | | 0.9 | 0.9e | |
| 3. Production of Primary Energy | 6.5 | 5.8 | -10.6% | 15.7 | 16.8 | 7.1% | 32.3 | 29.5 | -8.6% | 163.2 | 153.4 | -6.0% |
| of which: | | | | | | | | | | | | |
| Hard coal ⁽³⁾ | - | - | - | - | - | - | - | - | - | 10.6 | 10.5 | -1.0% |
| Lignite | 0.6 | 0.7 | 6.2% | 0.8 | 2.1 | 150.6% | 0.2 | 0.2 | 0.9% | - | - | - |
| Crude oil and condensates | 0.1 | 0.2 | 11.3% | - | - | - | - | - | - | 72.3 | 68.0 | -5.9% |
| Natural gas | 0.1 | 0.1 | 1.1% | - | - | - | - | - | - | 62.7 | 53.1 | -15.3% |
| Nuclear energy | 4.6 | 3.8 | -16.9% | 5.7 | 5.9 | 4.1% | 16.0 | 13.5 | -15.9% | 12.8 | 16.9 | 31.8% |
| Hydro & wind | 0.4 | 0.4 | 8.1% | 1.5 | 1.1 | -24.4% | 6.1 | 5.9 | -3.8% | 1.0 | 1.2 | 13.4% |
| Biomass & waste, solar & geothermal heat | 0.7 | 0.7e | | 7.7 | 7.7e | | 9.9 | 9.9e | | 3.7 | 3.7e | |
| 4. Energy Dependence Rate (EDR) | | | | | | | | | | | | |
| Total | 64.3% | 69.1% | | 55.8% | 53.9% | | 38.2% | 37.3% | | 25.7% | 28.5% | |
| of which: | | | | | | | | | | | | |
| Crude oil & petroleum products | 99.2% | 93.8% | | 104.4% | 102.9% | | 105.1% | 101.2% | | 7.3% | 14.3% | |
| Natural gas | 95.9% | 107.2% | | 100.0% | 100.0% | | 100.0% | 100.0% | | 25.3% | 31.3% | |
| 5. Gross Inland Consumption Per Capita in kgoe | 3343.6 | 3206.8 | | 6655.0 | 6395.2 | | 5313.0 | 4822.2 | | 3549.5 | 3359.8 | |

(1) GIC = primary production + recovered products + net imports + stock changes - bunkers

(2) Net Imports = Imports minus exports

(3) Including recovered products

e: Estimate

Source: Eurostat ([nrg_102m](#))

ESSENTIAL INFORMATION – METHODOLOGICAL NOTES

Note 1: The tonne of oil equivalent is a standardised conventional unit defined on the basis of one tonne of oil having a net calorific value of 41 868 kilojoules per kilogramme.

Note 2: With the exception of the data for biomass & waste, solar and geothermal heat (renewables annual data collection), all data for 2008 and 2009 in this report represent the cumulative monthly figures, and may differ from annual data.

Note 3: The energy dependence rate (EDR) is net imports of energy as a percentage of gross consumption (i.e. gross inland consumption plus bunkers). EDR

shows national energy dependence. Negative dependency rate indicates a net exporter. Positive values greater than 100% indicate a stocks build-up during the reference year.

Note 4: Euro area is EA16 (BE, DE, IE, EL, ES, FR, IT, CY, LU, MT, NL, AT, PT, SI, SK, FI).

Note 5: Heating degree days express the severity of the cold in a specific time period. Actual heating degree days based on the Eurostat methodology are calculated by the Joint Research Centre at regional (NUTS 2), national and European level.

Further information

Eurostat Website: <http://ec.europa.eu/eurostat>

Data on "Energy and Environment"

<http://epp.eurostat.ec.europa.eu/portal/page/portal/energy/data/database>

Select "Energy", "Energy statistics – quantities", "Energy statistics- supply, transformation, consumption"

Select "Energy", "Energy statistics – heating degree-days"

More information about "Energy and Environment":

<http://epp.eurostat.ec.europa.eu/portal/page/portal/energy/introduction>

Journalists can contact the media support service:

Bech Building Office A4/125 L - 2920 Luxembourg

Tel. (352) 4301 33408 Fax (352) 4301 35349

E-mail: eurostat-mediasupport@ec.europa.eu

European Statistical Data Support:

With the members of the 'European statistical system', Eurostat has set up a network of support centres in nearly all Member States and in some EFTA countries.

Their mission is to provide help and guidance to Internet users of European statistical data.

Contact details for this support network can be found on our Internet site:

<http://ec.europa.eu/eurostat/>

All Eurostat publications can be ordered via EU-Bookshop:

<http://bookshop.europa.eu/>
