

Contents

Production index for the main industrial groupings (MIGs) and total industry (excluding construction) 2

Production index for the main industrial groupings (MIGs) 3

Production index for industrial NACE Divisions in the EU 6

Production index for three largest NACE Divisions within total industry (excluding construction) 7

Manufacturing industries working on orders 9



Latest developments for the production and new orders indices for total industry (excluding construction)

during the third quarter of 2004

During the third quarter of 2004, the seasonally adjusted industrial production index for total industry (excluding construction) in the EU-25 remained almost unchanged (see Figure 1) when compared with the previous quarter. There were modest quarter on quarter increases recorded in the EU-15 and the euro-zone, at 0.1 % and 0.2 % respectively. The latest data showed a marked slowdown in the rate of growth of industrial output for all three European aggregates when compared with the data for the second quarter of 2004. Indeed, the latest rate of change for the EU-25 was the first decline in output registered for industrial output since the second quarter of 2003.

On an annual basis, industrial output increased by 2.3 % in the EU-25 in the third quarter of 2004, in comparison with the same quarter of the year before. The corresponding growth rates for the EU-15 and the euro-zone were 1.9 % and 2.4 % respectively.

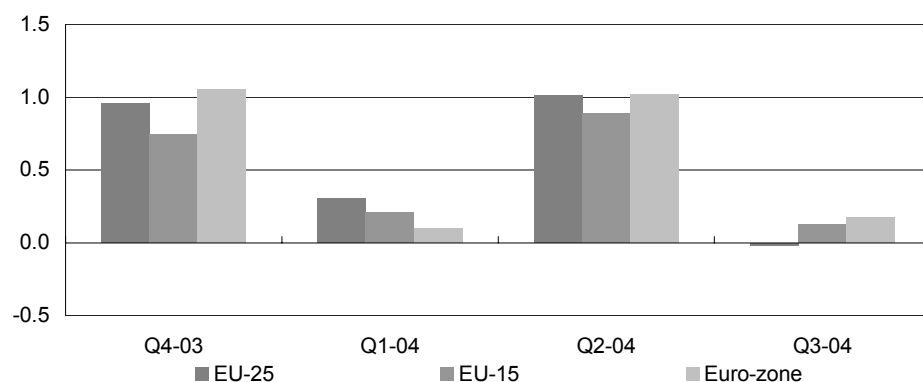


Figure 1: Production index for total industry (excluding construction), seasonally adjusted data, growth rates, compared to the previous quarter (%); source: Eurostat STS

	Quarter on quarter growth rates, seasonally adjusted data			Year on year growth rates, working day adjusted data		
	EU-25	EU-15	Euro-zone	EU-25	EU-15	Euro-zone
Q4-03	1.0	0.7	1.0	1.6	1.2	1.4
Q1-04	0.3	0.2	0.1	1.6	0.9	1.0
Q2-04	1.0	0.9	1.0	3.3	2.8	3.0
Q3-04	0.0	0.1	0.2	2.3	1.9	2.4

Table 1: Production index for total industry (excluding construction), growth rates (%); source: Eurostat STS

Production index for the main industrial groupings (MIGs) and total industry (excluding construction)

Among the Main Industrial Groupings (MIGs) within the EU-25, capital (0.5 %) and intermediate (0.4 %) goods were the only sectors to register an increase in output between the second and third quarters of 2004. The same was true for the EU-15, while for the euro-zone there was also modest growth of 0.2 % for energy and no change in the level of output of consumer non-durables. At the other end of the range, the output of consumer durables in the EU-25 fell by 1.0 % (and as much as 2.1 % in the euro-zone), while that of energy and consumer non-durables was lower by 0.4 %.

		Quarter on quarter growth rates, seasonally adjusted data						Year on year growth rates, working day adjusted data					
		Q2-03	Q3-03	Q4-03	Q1-04	Q2-04	Q3-04	Q2-03	Q3-03	Q4-03	Q1-04	Q2-04	Q3-04
Total industry (excluding construction)	EU-25	-0.5	0.8	1.0	0.3	1.0	0.0	-0.3	0.3	1.6	1.6	3.3	2.3
	EU-15	-0.6	0.6	0.7	0.2	0.9	0.1	-0.7	-0.1	1.2	0.9	2.8	1.9
	Euro-zone	-0.8	0.7	1.0	0.1	1.0	0.2	-0.9	-0.3	1.4	1.0	3.0	2.4
Total industry without energy (excluding construction)	EU-25	-0.4	0.9	1.2	0.2	1.0	0.0	-0.5	0.2	1.9	1.9	3.5	2.4
	EU-15	-0.6	0.7	1.1	0.1	0.9	0.0	-0.9	-0.3	1.4	1.3	2.9	2.1
	Euro-zone	-0.9	0.7	1.3	-0.1	1.1	0.2	-1.3	-0.6	1.4	1.0	3.1	2.5
Energy	EU-25	-0.8	0.7	-0.8	1.3	0.6	-0.4	-0.2	1.2	0.7	0.4	1.8	0.7
	EU-15	-0.7	0.5	-0.8	1.4	0.7	-0.7	-0.3	1.2	0.7	0.3	1.7	0.4
	Euro-zone	-1.1	1.0	-0.1	2.3	-0.5	0.2	1.9	2.1	2.8	2.1	2.7	1.9
Intermediate goods	EU-25	-0.5	0.6	1.3	0.3	1.0	0.4	-0.3	-0.4	1.6	1.7	3.3	3.1
	EU-15	-0.8	0.5	1.1	0.1	0.9	0.5	-0.7	-0.8	1.2	0.9	2.7	2.7
	Euro-zone	-0.8	0.4	1.4	-0.1	0.9	0.7	-0.9	-0.8	1.4	0.8	2.7	3.0
Capital goods	EU-25	-0.5	0.9	1.9	0.0	2.4	0.5	-0.3	0.3	2.8	2.1	5.5	4.9
	EU-15	-0.7	0.7	1.8	-0.3	2.3	0.5	-0.7	-0.2	2.2	1.3	4.7	4.4
	Euro-zone	-1.4	0.7	2.0	-0.5	2.3	0.6	-1.8	-1.1	1.9	0.7	4.8	4.5
Consumer durables	EU-25	-1.0	2.3	0.8	0.4	0.6	-1.0	-4.3	-1.1	0.6	2.6	4.4	0.8
	EU-15	-1.4	1.9	0.3	0.1	0.6	-1.4	-5.5	-2.7	-1.3	1.0	3.3	-0.3
	Euro-zone	-1.9	2.1	0.6	0.1	0.1	-2.1	-6.5	-3.4	-1.4	1.0	3.1	-1.4
Consumer non-durables	EU-25	0.0	0.8	0.0	0.0	0.2	-0.4	0.0	1.0	0.8	0.9	1.1	-0.2
	EU-15	-0.2	0.8	0.0	0.0	0.2	-0.4	-0.4	0.7	0.5	0.5	1.0	-0.4
	Euro-zone	-0.4	0.7	0.0	0.1	0.4	0.0	-0.4	0.8	0.2	0.4	1.2	0.5

Table 2: Production index for the MIGs, growth rates (%); source: Eurostat STS

	Quarter on quarter growth rates, seasonally adjusted data						Year on year growth rates, working day adjusted data					
	Q2-03	Q3-03	Q4-03	Q1-04	Q2-04	Q3-04	Q2-03	Q3-03	Q4-03	Q1-04	Q2-04	Q3-04
EU-25	-0.5	0.8	1.0	0.3	1.0	0.0	-0.3	0.3	1.6	1.6	3.3	2.3
EU-15	-0.6	0.6	0.7	0.2	0.9	0.1	-0.7	-0.1	1.2	0.9	2.8	1.9
Euro-zone	-0.8	0.7	1.0	0.1	1.0	0.2	-0.9	-0.3	1.4	1.0	3.0	2.4
BE	-0.1	0.8	0.6	0.5	0.3	0.5	-0.4	0.5	1.5	1.8	2.0	2.1
CZ	0.0	2.0	2.8	2.5	3.0	1.3	4.9	5.3	6.6	7.8	11.3	10.0
DK	-0.5	0.7	-1.6	1.0	1.1	-1.3	-1.3	1.0	-0.3	-0.5	1.2	-0.9
DE	-0.9	-0.2	2.1	0.4	1.6	-0.4	-0.2	-1.1	1.5	1.5	4.0	3.6
EE	3.5	3.8	0.6	-1.0	2.8	4.5	9.2	10.0	9.5	6.8	6.3	7.0
EL	2.5	-0.3	0.1	0.3	0.6	-0.2	2.1	2.2	0.8	2.6	0.9	0.9
ES	0.0	0.4	0.5	0.4	1.0	0.3	1.7	1.0	1.1	1.3	2.5	2.3
FR	-1.3	0.7	0.9	0.4	0.8	-0.1	-1.8	-0.3	1.5	0.5	3.0	2.0
IE	1.1	3.0	7.2	-6.8	0.1	1.8	0.9	4.3	14.7	4.1	3.1	1.6
IT	-1.1	1.5	-0.2	-0.3	0.3	-0.4	-1.8	-0.4	0.0	-0.2	1.4	-0.7
CY	-1.1	1.4	0.7	0.2	-2.0	:	-0.6	2.1	2.0	1.3	0.0	:
LV	3.4	3.6	0.4	3.0	0.5	0.4	6.4	8.2	6.0	10.9	7.6	4.1
LT	1.2	5.6	4.5	0.7	1.7	0.9	4.3	20.0	19.2	9.9	17.3	7.5
LU	-1.4	3.0	1.0	4.3	1.2	:	3.0	7.7	3.4	6.9	9.8	:
HU	2.0	3.3	4.2	1.3	0.5	0.1	4.4	6.8	9.5	11.1	9.6	6.2
MT	:	:	:	:	:	:	:	:	:	:	:	:
NL	-3.5	0.8	1.5	2.3	-1.7	0.4	-5.1	-4.0	-1.2	1.2	3.0	2.6
AT	-1.3	0.9	0.5	2.2	2.5	:	-0.3	2.2	1.9	2.3	6.1	:
PL	3.8	3.6	2.9	6.4	2.2	-2.2	8.5	9.0	10.9	17.9	16.5	8.8
PT	0.1	1.0	0.3	-4.0	0.8	-1.2	-2.8	1.1	1.0	-2.9	-1.8	-4.1
SI	-0.7	1.4	2.1	-1.5	1.8	-0.2	-3.0	-2.6	1.1	1.4	3.9	2.4
SK	0.3	1.3	2.0	2.1	-0.3	0.3	5.0	2.5	4.2	6.3	5.1	3.8
FI	-0.5	1.2	0.3	-1.0	4.0	2.7	-1.4	1.6	0.8	-0.6	4.6	6.4
SE	1.8	0.3	1.0	1.7	2.0	-0.4	2.4	3.5	2.9	4.8	5.3	4.5
UK	-0.1	0.3	0.2	-0.4	1.2	-1.4	-0.2	0.1	0.2	0.3	1.2	-0.4
BG	3.2	3.7	4.1	5.3	4.3	3.2	11.9	12.8	17.2	17.4	19.0	17.7
RO	3.2	0.2	0.0	2.0	0.7	1.8	5.6	2.6	0.9	5.5	3.1	4.6
TR	:	:	:	:	:	:	:	:	:	:	:	:

Table 3: Production index for total industry (excluding construction), growth rates (%); source: Eurostat STS

Production index for the main industrial groupings (MIGs)

	Quarter on quarter growth rates, seasonally adjusted data						Year on year growth rates, working day adjusted data					
	Q2-03	Q3-03	Q4-03	Q1-04	Q2-04	Q3-04	Q2-03	Q3-03	Q4-03	Q1-04	Q2-04	Q3-04
EU-25	-0.4	0.9	1.2	0.2	1.0	0.0	-0.5	0.2	1.9	1.9	3.5	2.4
EU-15	-0.6	0.7	1.1	0.1	0.9	0.0	-0.9	-0.3	1.4	1.3	2.9	2.1
Euro-zone	-0.9	0.7	1.3	-0.1	1.1	0.2	-1.3	-0.6	1.4	1.0	3.1	2.5
BE	-0.8	2.0	0.9	0.2	0.7	-0.7	-1.4	0.8	2.1	2.8	3.9	0.7
CZ	0.8	2.3	2.4	2.2	2.8	1.5	4.8	6.2	6.2	7.7	13.2	8.6
DK	-0.8	1.2	-1.3	1.4	0.0	-0.8	-2.3	-0.3	-1.1	0.4	1.2	-0.8
DE	-1.3	0.3	2.0	0.3	1.5	0.2	-0.7	-1.2	1.6	1.3	4.3	4.0
EE	3.0	3.2	3.4	-1.0	1.5	3.3	8.3	9.7	11.9	8.6	7.1	7.2
EL	0.6	-0.6	2.0	-1.6	3.0	-1.9	0.3	-0.9	0.8	0.5	3.2	1.3
ES	-1.1	0.4	1.7	-0.2	0.7	0.9	-0.5	0.0	1.4	0.9	2.6	3.0
FR	-1.1	0.9	0.4	0.2	1.3	0.2	-1.9	-0.5	1.1	0.3	2.9	2.1
IE	3.0	1.4	6.0	-6.2	1.6	0.6	0.6	3.4	15.5	3.7	2.4	1.6
IT	-1.3	1.7	-0.1	-0.7	0.6	-1.3	-2.4	-1.0	-0.8	-0.1	1.6	-1.1
CY	-2.4	2.6	0.7	-0.9	0.0	:	6.3	10.5	7.6	0.2	2.3	:
LV	2.7	2.9	0.7	3.3	-0.3	0.9	7.4	7.6	7.1	10.2	6.6	4.5
LT	-0.1	4.4	3.3	1.9	3.5	-2.2	14.7	16.5	21.0	10.1	13.9	6.3
LU	1.5	2.0	-1.3	4.7	1.5	:	3.8	6.5	2.1	7.1	7.0	:
HU	2.9	3.8	5.8	1.1	-0.6	0.5	5.2	8.1	11.9	14.0	10.3	6.8
MT	:	:	:	:	:	:	:	:	:	:	:	:
NL	-1.7	0.0	0.0	0.4	-0.1	-0.2	-3.8	-3.8	-2.1	-1.1	0.5	0.3
AT	-1.1	1.2	0.8	2.4	2.1	:	-0.7	2.8	3.0	3.4	6.6	:
PL	4.2	4.8	3.3	6.4	1.2	-2.2	9.4	9.5	12.5	20.4	16.8	8.5
PT	0.2	1.6	-0.2	-2.8	-1.1	1.6	-3.6	0.9	-0.1	-1.4	-2.3	-2.6
SI	-1.4	1.8	3.1	-1.7	1.2	0.7	2.7	2.4	7.7	1.8	4.5	3.4
SK	1.3	2.2	4.4	1.1	-2.9	0.5	8.3	5.6	8.7	9.5	4.8	3.1
FI	1.8	0.5	1.4	-0.7	2.2	1.1	0.7	1.3	2.5	2.6	3.3	4.0
SE	1.1	1.7	0.1	1.6	1.2	0.6	3.5	4.2	3.3	4.5	4.9	3.7
UK	0.8	0.8	0.4	0.4	0.3	-0.6	0.5	0.5	1.2	2.2	1.9	0.4
BG	:	:	:	:	:	:	:	:	:	:	:	:
RO	3.1	0.8	0.8	1.8	0.5	2.0	7.6	3.5	1.6	6.7	3.9	5.1
TR	:	:	:	:	:	:	:	:	:	:	:	:

Table 4: Production index for total industry (excluding energy & construction), growth rates (%); source: Eurostat STS

	Quarter on quarter growth rates, seasonally adjusted data						Year on year growth rates, working day adjusted data					
	Q2-03	Q3-03	Q4-03	Q1-04	Q2-04	Q3-04	Q2-03	Q3-03	Q4-03	Q1-04	Q2-04	Q3-04
EU-25	-0.8	0.7	-0.8	1.3	0.6	-0.4	-0.2	1.2	0.7	0.4	1.8	0.7
EU-15	-0.7	0.5	-0.8	1.4	0.7	-0.7	-0.3	1.2	0.7	0.3	1.7	0.4
Euro-zone	-1.1	1.0	-0.1	2.3	-0.5	0.2	1.9	2.1	2.8	2.1	2.7	1.9
BE	6.5	-1.7	-10.6	7.3	7.1	-0.5	9.8	-1.6	-7.0	1.9	2.9	0.3
CZ	0.0	3.1	-0.9	-1.4	2.0	2.1	5.3	5.5	6.1	0.6	2.8	2.0
DK	2.6	1.7	-6.5	-1.7	7.9	-1.0	3.0	8.5	3.1	-4.4	1.1	-0.9
DE	1.2	-2.4	0.2	3.6	-0.4	-2.2	3.6	0.7	0.7	2.4	1.0	1.0
EE	0.5	3.0	-6.9	3.4	1.4	-0.5	10.6	12.0	-3.8	-0.7	0.3	-3.7
EL	8.0	-0.2	-3.8	2.9	-2.2	3.6	5.9	8.7	1.9	6.9	-3.4	0.2
ES	0.0	2.9	-0.7	2.3	1.5	0.4	2.1	6.7	5.4	5.6	6.0	3.4
FR	-3.1	1.8	2.4	1.6	-2.8	-1.0	-0.4	2.2	4.5	2.6	2.7	-0.5
IE	-5.1	11.4	3.8	-1.3	-1.0	-2.6	11.5	15.2	14.7	8.3	13.0	-1.3
IT	0.0	1.4	-0.8	0.0	0.4	2.5	3.3	3.9	5.7	0.8	1.0	2.2
CY	7.8	-1.4	-3.0	4.2	-5.6	:	8.0	7.8	3.5	7.4	-6.2	:
LV	0.2	1.4	0.6	3.9	1.5	1.8	3.6	4.5	-2.9	9.4	6.9	4.7
LT	-37.9	35.8	25.7	6.4	-28.8	16.6	-15.3	32.9	20.2	12.9	29.0	10.9
LU	2.0	0.5	7.8	1.4	5.1	:	10.4	9.4	18.5	11.7	15.7	:
HU	-5.7	0.3	-0.4	4.4	0.4	-1.7	-1.0	-2.5	-3.0	-1.5	4.9	2.6
MT	:	:	:	:	:	:	:	:	:	:	:	:
NL	-8.1	4.3	5.9	3.7	-1.5	3.3	-9.3	-7.6	2.0	5.1	13.1	14.4
AT	-2.0	-2.2	-3.4	4.4	4.4	:	2.4	-1.6	-4.4	-3.5	3.1	:
PL	-1.4	0.6	0.1	1.3	-0.1	2.1	0.2	0.7	0.3	1.0	2.0	3.8
PT	-0.5	-2.4	2.8	-17.0	3.4	0.4	2.1	2.1	7.1	-17.1	-13.6	-11.1
SI	0.6	-1.9	-4.1	3.7	1.4	-3.9	0.3	2.8	-0.9	-1.8	-1.1	-4.4
SK	-6.8	-0.7	0.3	3.6	2.8	-0.8	-7.0	-8.6	-8.9	-3.6	6.7	6.6
FI	-3.5	7.5	-5.4	0.9	0.3	-0.5	7.8	12.7	-1.2	-0.9	2.7	-4.5
SE	0.6	-2.5	3.2	6.4	0.0	3.3	-11.2	-6.5	-1.9	6.2	10.4	15.1
UK	-1.9	-0.7	-1.1	-0.5	0.9	-2.7	-5.1	-1.7	-4.6	-4.4	-1.8	-4.6
BG	-2.6	5.0	-3.9	3.4	4.1	1.4	-0.9	5.8	3.3	1.3	8.8	5.2
RO	3.1	-0.3	-3.2	1.2	1.1	3.2	-3.1	-1.8	-2.0	0.6	-1.3	2.2
TR	:	:	:	:	:	:	:	:	:	:	:	:

Table 5: Production index for energy, growth rates (%); source: Eurostat STS

Production index for the main industrial groupings (MIGs) (continued)

	Quarter on quarter growth rates, seasonally adjusted data						Year on year growth rates, working day adjusted data					
	Q2-03	Q3-03	Q4-03	Q1-04	Q2-04	Q3-04	Q2-03	Q3-03	Q4-03	Q1-04	Q2-04	Q3-04
EU-25	-0.5	0.6	1.3	0.3	1.0	0.4	-0.3	-0.4	1.6	1.7	3.3	3.1
EU-15	-0.8	0.5	1.1	0.1	0.9	0.5	-0.7	-0.8	1.2	0.9	2.7	2.7
Euro-zone	-0.8	0.4	1.4	-0.1	0.9	0.7	-0.9	-0.8	1.4	0.8	2.7	3.0
BE	-2.5	3.8	2.5	-6.1	-3.6	3.8	-4.4	5.8	2.6	-2.5	-6.4	-2.6
CZ	1.5	2.4	4.4	5.3	1.7	1.1	5.5	5.8	6.8	14.8	14.6	13.2
DK	-2.7	-0.3	0.4	2.7	1.7	-0.4	-0.7	2.3	3.3	0.4	4.7	4.3
DE	-0.2	-0.4	2.4	1.0	1.2	0.1	0.4	-1.2	1.9	2.8	4.2	4.7
EE	2.4	4.1	2.5	2.0	1.3	4.1	13.3	13.9	18.4	11.5	10.1	10.0
EL	6.5	-7.2	5.6	15.0	-0.2	2.7	-9.0	-15.8	-10.5	20.0	12.4	23.6
ES	-1.0	-0.2	1.3	0.4	1.3	0.1	2.2	0.8	0.9	0.8	2.9	2.8
FR	-2.1	0.4	1.0	0.2	1.4	0.0	-3.6	-3.1	-0.6	-0.7	2.8	2.6
IE	0.1	3.7	9.2	-12.2	-2.3	6.1	-3.7	0.9	16.7	-0.6	-2.7	-1.8
IT	-2.3	0.9	-0.5	-0.5	1.5	0.0	-1.7	-1.7	-1.3	-2.4	1.3	0.7
CY	-1.7	0.5	1.5	-0.1	1.9	:	1.5	1.7	-2.3	0.3	4.0	:
LV	1.7	3.7	3.6	3.9	-1.4	-2.2	6.0	5.7	8.9	13.5	10.0	3.7
LT	1.6	7.2	2.8	-0.7	7.8	0.8	21.9	24.0	23.7	11.7	17.9	10.6
LU	3.2	0.7	0.2	4.4	1.6	:	6.4	5.7	4.5	8.7	7.2	:
HU	3.9	1.3	2.4	6.2	-1.1	1.8	-3.3	-3.8	-1.9	14.0	8.8	9.2
MT	:	:	:	:	:	:	:	:	:	:	:	:
NL	0.1	-0.2	1.2	0.6	1.7	-1.5	-1.8	-2.0	0.4	1.6	3.5	1.8
AT	-0.6	0.4	1.1	1.4	2.6	:	1.3	2.9	4.1	2.4	5.5	:
PL	6.2	2.6	4.1	8.1	3.2	-5.4	10.2	9.8	13.5	22.7	19.1	9.1
PT	1.4	1.5	0.1	-1.2	0.8	-2.8	-0.9	5.5	5.0	1.9	1.4	-3.4
SI	-0.1	1.2	3.5	-1.0	3.2	-1.2	2.3	-1.6	6.2	3.4	6.7	4.3
SK	0.4	2.6	3.4	1.2	0.8	1.0	4.0	3.7	6.8	7.9	8.0	6.4
FI	1.2	0.5	1.0	-0.1	3.9	1.1	2.4	1.7	2.1	2.2	5.4	6.1
SE	0.0	0.9	-0.7	1.4	1.5	0.5	0.8	0.8	0.6	1.6	3.0	3.1
UK	-0.4	0.0	0.8	0.7	1.1	-1.3	0.5	-1.4	-0.3	1.3	2.4	0.8
BG	2.5	2.4	9.8	12.5	8.1	5.7	19.9	13.5	22.3	29.4	36.9	40.8
RO	4.0	0.6	0.7	7.3	2.8	4.3	5.9	0.8	0.3	13.3	11.9	15.9
TR	:	:	:	:	:	:	:	:	:	:	:	:

Table 6: Production index for intermediate goods, growth rates (%); source: Eurostat STS

	Quarter on quarter growth rates, seasonally adjusted data						Year on year growth rates, working day adjusted data					
	Q2-03	Q3-03	Q4-03	Q1-04	Q2-04	Q3-04	Q2-03	Q3-03	Q4-03	Q1-04	Q2-04	Q3-04
EU-25	-0.5	0.9	1.9	0.0	2.4	0.5	-0.3	0.3	2.8	2.1	5.5	4.9
EU-15	-0.7	0.7	1.8	-0.3	2.3	0.5	-0.7	-0.2	2.2	1.3	4.7	4.4
Euro-zone	-1.4	0.7	2.0	-0.5	2.3	0.6	-1.8	-1.1	1.9	0.7	4.8	4.5
BE	3.1	-8.0	1.9	6.9	0.5	-3.4	-3.9	-10.8	-1.3	3.6	0.8	5.8
CZ	-1.4	3.6	2.8	2.8	5.9	1.1	6.1	7.0	6.5	6.2	19.5	13.7
DK	-0.3	-0.6	-2.2	6.4	-0.9	-3.7	0.1	-2.8	-6.4	2.9	2.1	-1.2
DE	-2.6	0.6	3.4	-1.1	3.3	-0.1	-1.2	-1.1	2.7	0.5	6.3	5.5
EE	8.4	-1.5	14.5	-6.8	0.6	11.7	11.8	8.1	17.7	12.8	5.7	19.8
EL	10.9	0.6	-2.4	-4.1	4.9	-2.8	3.1	2.2	-4.6	2.5	-1.5	-2.8
ES	-0.3	0.2	2.8	-0.9	1.5	0.7	0.4	-2.3	3.2	1.3	3.7	4.3
FR	-0.4	0.4	1.5	-0.7	2.5	-0.2	-1.3	0.9	4.2	0.0	4.1	3.7
IE	6.4	4.0	5.4	-3.0	0.1	1.4	18.9	14.9	19.2	13.2	6.6	3.9
IT	-1.7	2.3	0.3	-1.0	0.7	-1.8	-4.1	-2.7	-1.5	-0.1	2.3	-2.3
CY	-5.8	-1.5	-3.2	6.9	-6.8	:	-17.4	-19.6	-28.8	-3.8	-5.0	:
LV	6.0	3.7	-0.5	-4.6	3.8	2.0	22.2	28.4	16.0	3.7	1.9	0.6
LT	7.4	9.7	5.6	-4.4	11.4	-6.7	17.2	25.2	25.8	22.7	22.8	4.8
LU	0.0	-0.3	2.1	5.7	12.6	:	1.1	4.7	-7.6	7.4	21.4	:
HU	2.5	4.6	5.9	-1.6	5.2	-7.5	7.0	9.8	14.5	11.4	14.3	1.4
MT	:	:	:	:	:	:	:	:	:	:	:	:
NL	-0.6	-2.7	1.4	-0.6	1.2	-0.9	-4.3	-4.9	-4.5	-2.7	-0.7	1.5
AT	-1.9	2.4	2.3	7.0	1.4	:	-3.5	4.5	3.0	10.9	13.6	:
PL	8.8	7.2	9.0	19.3	3.2	-4.6	16.6	21.4	31.2	48.6	45.2	27.3
PT	-2.6	-0.3	0.2	-1.3	-1.3	0.1	-11.3	-7.7	-8.0	-3.7	-2.8	-2.7
SI	-2.1	6.1	-1.3	-1.2	2.1	4.6	8.6	18.4	13.0	1.0	4.9	4.5
SK	7.6	8.3	6.3	-2.6	-0.7	-2.4	15.0	20.2	26.6	21.0	10.9	-0.7
FI	-2.7	-0.8	1.0	-0.5	6.2	6.1	-6.4	-2.9	-3.0	-3.8	5.9	13.6
SE	4.1	0.9	2.6	2.4	2.8	-1.0	3.5	7.5	4.7	10.6	9.1	7.2
UK	1.6	0.8	1.0	-1.7	3.6	0.6	4.6	3.1	4.3	2.0	2.8	3.9
BG	-3.1	-2.5	14.8	6.6	1.0	3.3	10.8	-1.0	23.2	18.0	19.4	26.4
RO	2.5	-1.5	-0.3	3.1	4.0	-0.7	4.4	3.8	1.0	3.9	5.5	6.0
TR	:	:	:	:	:	:	:	:	:	:	:	:

Table 7: Production index for capital goods, growth rates (%); source: Eurostat STS

Production index for the main industrial groupings (MIGs) (continued)

	Quarter on quarter growth rates, seasonally adjusted data						Year on year growth rates, working day adjusted data					
	Q2-03	Q3-03	Q4-03	Q1-04	Q2-04	Q3-04	Q2-03	Q3-03	Q4-03	Q1-04	Q2-04	Q3-04
EU-25	-1.0	2.3	0.8	0.4	0.6	-1.0	-4.3	-1.1	0.6	2.6	4.4	0.8
EU-15	-1.4	1.9	0.3	0.1	0.6	-1.4	-5.5	-2.7	-1.3	1.0	3.3	-0.3
Euro-zone	-1.9	2.1	0.6	0.1	0.1	-2.1	-6.5	-3.4	-1.4	1.0	3.1	-1.4
BE	-4.7	0.5	-1.4	-2.8	0.9	-2.4	-12.6	-9.5	-6.8	-9.3	-2.1	-5.7
CZ	4.6	2.2	1.9	13.5	-7.0	-1.1	-3.4	-0.3	7.5	26.5	9.8	5.8
DK	-1.1	1.0	-1.3	1.9	2.9	-0.6	-6.2	-3.6	-3.1	0.1	4.6	3.4
DE	-2.9	2.0	0.9	-0.1	2.2	-4.1	-7.3	-4.5	-2.3	-0.2	5.0	-1.5
EE	-1.3	-7.7	0.8	6.6	-1.4	8.8	5.3	-7.6	-6.7	-1.9	-2.2	15.8
EL	-7.2	9.2	-2.5	0.5	10.6	-4.1	-5.4	1.9	2.9	1.4	19.1	3.7
ES	0.9	-2.0	-1.6	1.6	2.1	0.6	0.8	-1.7	-2.2	-1.6	0.5	3.4
FR	-0.4	-0.8	-3.3	2.4	0.5	-0.4	-5.4	-5.8	-6.3	-0.3	2.8	1.0
IE	3.1	-4.1	12.0	-16.0	2.1	1.5	7.0	0.7	13.8	-7.6	-8.8	-3.4
IT	-0.8	5.4	0.8	0.5	-1.9	-2.5	-7.7	-1.3	0.5	6.0	4.4	-3.8
CY	-3.9	7.1	-1.7	-1.6	5.5	:	-3.0	10.5	6.8	-0.3	9.4	:
LV	0.7	-4.9	0.2	3.3	7.0	4.8	12.6	0.9	-0.4	-0.9	5.6	16.2
LT	3.0	6.3	4.7	20.2	-3.3	-1.5	19.4	17.9	21.2	38.3	29.4	19.3
LU	c	c	c	c	c	:	c	c	c	c	c	:
HU	9.5	9.7	17.0	-1.7	-0.1	14.9	49.3	58.9	67.6	39.5	26.6	32.4
MT	:	:	:	:	:	:	:	:	:	:	:	:
NL	-3.9	-0.6	-0.6	0.7	-3.8	1.1	-10.3	-11.3	-6.2	-3.9	-4.3	-3.2
AT	-0.9	3.0	0.4	2.2	1.0	:	-9.5	-4.1	0.5	4.3	6.8	:
PL	6.3	11.4	5.0	6.0	5.3	0.3	22.8	31.9	35.4	31.7	30.3	16.3
PT	11.1	2.6	-3.4	-6.7	8.1	0.4	0.4	1.6	-1.2	2.7	0.1	-2.9
SI	-10.0	6.0	0.2	-14.1	0.0	2.4	-1.8	11.9	11.4	-17.3	-8.9	-11.5
SK	-1.6	-4.2	-0.2	19.0	-5.9	6.8	26.9	-10.6	-5.8	15.0	5.0	18.0
FI	12.3	40.1	7.0	-29.3	4.8	20.5	-7.7	50.3	64.4	19.6	11.0	-4.6
SE	0.7	2.0	-3.3	-0.2	0.2	0.8	0.8	4.6	1.7	-0.8	-1.6	-2.2
UK	0.7	1.1	0.1	0.8	2.7	0.8	-1.4	0.0	-1.0	1.2	4.5	4.2
BG	5.5	12.0	10.1	10.4	12.7	-1.3	52.7	48.1	55.2	43.4	54.4	35.0
RO	0.2	1.6	5.5	-4.7	7.7	5.0	9.6	4.7	10.0	2.3	10.1	13.7
TR	:	:	:	:	:	:	:	:	:	:	:	:

Table 8: Production index for consumer durables, growth rates (%); source: Eurostat STS

	Quarter on quarter growth rates, seasonally adjusted data						Year on year growth rates, working day adjusted data					
	Q2-03	Q3-03	Q4-03	Q1-04	Q2-04	Q3-04	Q2-03	Q3-03	Q4-03	Q1-04	Q2-04	Q3-04
EU-25	0.0	0.8	0.0	0.0	0.2	-0.4	0.0	1.0	0.8	0.9	1.1	-0.2
EU-15	-0.2	0.8	0.0	0.0	0.2	-0.4	-0.4	0.7	0.5	0.5	1.0	-0.4
Euro-zone	-0.4	0.7	0.0	0.1	0.4	0.0	-0.4	0.8	0.2	0.4	1.2	0.5
BE	-3.8	2.6	2.1	-0.2	1.1	0.0	6.7	10.6	13.4	0.1	5.6	2.9
CZ	1.1	0.9	0.8	0.2	0.5	0.7	3.0	4.2	5.5	2.2	1.6	1.8
DK	-0.5	2.0	0.3	-3.2	-2.5	-0.7	-4.8	-0.6	0.1	-1.5	-3.5	-6.0
DE	0.3	-0.4	0.4	-0.1	0.2	0.3	-0.4	-0.8	-0.4	0.3	0.1	0.8
EE	1.8	5.0	-0.5	-1.2	2.5	-2.3	3.4	8.8	6.1	4.8	5.7	-1.5
EL	2.1	-3.6	3.4	-0.4	2.3	-0.6	2.4	-2.8	-1.8	1.4	1.8	4.5
ES	0.8	-0.1	-1.3	0.6	-0.1	0.6	1.9	0.6	-1.7	0.2	-0.9	-0.3
FR	-0.2	1.3	-0.7	1.1	-0.1	0.4	0.2	1.7	0.3	1.5	1.9	0.3
IE	-4.4	0.3	1.5	6.2	3.0	-0.4	-6.8	1.2	-1.6	3.6	11.2	10.9
IT	-0.1	1.1	-0.7	0.3	-0.4	-1.1	-0.3	1.6	0.4	0.6	0.5	-1.9
CY	-3.7	4.1	3.0	-3.3	-3.5	:	10.2	20.4	24.7	-0.2	-0.3	:
LV	3.1	1.2	0.7	1.7	1.1	0.6	3.8	3.6	3.4	6.8	4.8	4.0
LT	-4.0	-2.1	1.8	-1.5	2.6	-6.0	6.6	3.8	10.7	-6.2	0.9	-3.2
LU	-0.9	4.3	-3.8	3.4	-4.0	:	-0.5	8.7	1.2	2.7	-0.6	:
HU	0.9	3.9	-2.7	-0.1	-2.2	-0.1	-2.2	3.1	-0.2	2.0	-1.2	-4.9
MT	:	:	:	:	:	:	:	:	:	:	:	:
NL	-2.0	0.3	0.2	-1.3	-0.1	0.3	-4.7	-3.6	-2.1	-2.7	-1.0	-1.0
AT	-1.7	0.9	-0.9	-2.0	1.7	:	1.2	2.0	1.7	-4.3	-0.3	:
PL	1.9	1.8	2.1	3.1	-3.0	1.3	10.9	5.9	6.0	10.4	4.7	3.1
PT	-2.2	2.4	-0.4	-1.6	-0.5	-0.4	-4.4	-1.9	-3.1	-2.0	-0.4	-2.2
SI	1.5	-1.5	5.4	1.2	0.0	-0.5	1.2	-3.3	5.3	7.0	5.4	6.0
SK	3.3	-6.2	-5.6	4.1	-6.3	4.3	4.3	-4.5	-8.2	-4.9	-13.7	-4.0
FI	-0.7	1.4	0.2	-2.4	0.8	-0.9	-3.1	0.2	0.8	-1.6	0.1	-2.3
SE	1.7	-1.3	0.8	-0.5	2.4	-2.5	6.8	3.7	3.7	0.4	2.1	-0.2
UK	0.1	0.9	0.0	-0.5	-0.5	-2.2	-0.7	0.3	1.4	1.2	0.3	-2.9
BG	8.4	5.4	3.5	3.6	-3.3	2.1	17.6	25.4	25.3	23.2	8.4	5.8
RO	5.7	0.0	-2.6	-2.0	-0.9	-0.9	10.5	5.8	1.9	0.7	-5.4	-6.2
TR	:	:	:	:	:	:	:	:	:	:	:	:

Table 9: Production index for consumer non-durables, growth rates (%); source: Eurostat STS

Production index for industrial NACE Divisions in the EU

EU-25 NACE Rev. 1 heading (code)		Weight in total industry (%)	Quarter on quarter growth rates, seasonally adjusted data						Year on year growth rates, working day adjusted data					
			Q2-03	Q3-03	Q4-03	Q1-04	Q2-04	Q3-04	Q2-03	Q3-03	Q4-03	Q1-04	Q2-04	Q3-04
Total industry	C-E	100.0	-0.5	0.8	1.0	0.3	1.0	0.0	-0.3	0.3	1.6	1.6	3.3	2.3
Mining of coal and lignite	10	0.6	-1.3	-0.9	3.6	-2.1	-1.6	-7.4	-4.4	-4.9	1.1	-0.9	-1.1	-7.6
Extr. petroleum / natural gas	11	2.7	-5.2	1.0	-1.1	-1.8	0.9	-2.2	-8.5	-3.2	-6.4	-6.7	-0.9	-3.5
Mining of metal ores	13	0.1	-3.6	3.8	0.8	0.3	2.2	-1.9	4.5	4.5	-4.4	1.9	7.2	0.8
Other non-metallic mining	14	0.7	-0.3	-1.2	0.7	-0.5	-0.1	-2.9	-0.2	-1.6	-0.6	-1.5	-1.1	-2.9
Food and beverages	15	9.5	0.2	0.9	-0.4	1.0	-0.2	-0.3	0.8	1.7	0.2	2.1	1.3	0.0
Tobacco	16	0.6	-1.9	-2.9	-1.0	-0.2	-2.2	-1.6	-6.2	-6.8	-7.2	-5.6	-6.1	-5.0
Textiles	17	2.2	-2.5	-0.3	-0.2	-2.3	0.3	-1.4	-4.7	-4.2	-3.0	-5.3	-2.5	-3.5
Clothing	18	1.5	-1.2	1.3	-2.1	-1.6	0.2	-3.5	-6.2	-2.4	-3.9	-4.3	-1.1	-6.8
Leather products	19	0.7	-4.2	-2.0	-2.0	-3.2	-2.9	-3.5	-9.1	-9.5	-8.1	-10.6	-9.6	-11.2
Wood products	20	1.8	0.4	1.6	0.7	1.8	0.1	-0.2	-0.2	0.6	1.5	4.5	4.2	2.2
Pulp & paper	21	2.7	0.2	0.7	1.4	0.9	1.0	0.3	1.4	1.7	2.8	3.1	4.1	3.6
Publishing & printing	22	5.4	0.1	0.5	0.9	0.8	-0.1	-0.1	-1.2	-1.0	0.2	2.8	2.1	1.5
Refined petroleum prod.	23	1.9	-0.8	2.2	-0.1	2.2	1.6	-1.0	0.3	2.7	3.5	3.3	6.0	2.7
Chemicals	24	9.2	-0.2	0.7	1.9	-1.4	0.7	0.4	0.8	1.1	5.2	1.1	1.8	1.6
Rubber & plastics	25	4.0	-0.1	2.2	1.0	0.3	0.5	-1.2	0.3	2.1	3.6	3.4	4.2	0.5
Non-metallic minerals	26	4.0	0.4	0.9	1.0	0.3	0.8	-0.7	-0.2	0.9	2.3	2.5	3.1	1.3
Basic metals	27	3.5	-1.6	0.5	1.6	1.2	1.1	0.1	-1.1	-1.7	0.3	1.7	4.6	4.2
Metal products	28	7.9	-0.7	1.5	1.1	0.4	1.5	-0.8	-1.0	-0.1	1.5	2.9	4.7	2.2
Machinery	29	9.3	-1.2	1.5	1.0	0.7	1.9	-0.3	-2.6	-0.8	0.0	1.9	5.4	3.4
Office machinery	30	0.9	-0.8	1.2	1.0	-3.3	0.7	-0.4	-1.9	3.1	6.9	-3.8	0.0	-1.0
Electrical machinery	31	4.4	-0.6	0.1	2.0	1.3	1.9	-0.1	-1.3	-3.1	0.2	3.0	5.9	5.1
Radio/TV/communication	32	3.6	-0.8	1.5	3.1	2.0	2.5	5.0	-1.8	1.9	6.7	5.7	8.8	14.1
Medical and optical	33	2.7	-0.7	0.5	1.5	-0.1	1.3	0.7	1.2	1.2	3.3	1.0	3.3	3.5
Motor vehicles	34	6.5	-0.8	0.8	3.0	0.5	3.2	1.1	1.6	0.3	4.3	3.2	8.0	7.7
Other transport	35	2.5	1.0	-0.5	2.9	-2.5	2.1	1.4	2.7	3.9	5.8	0.2	2.0	3.8
Furniture & other manf.	36	2.9	-1.0	1.1	-0.3	0.7	0.6	-1.5	-3.8	-1.0	-0.1	0.5	2.2	-0.6
Elec./gas/hot water	40	7.0	-0.2	1.0	-0.9	1.7	-0.6	1.5	2.5	3.1	2.8	1.8	1.3	1.8
Water	41	0.8	1.2	4.2	1.5	-0.2	-0.2	-3.7	1.2	4.3	1.6	-0.3	-0.2	-3.7

EURO-ZONE		Weight in total industry (%)	Quarter on quarter growth rates, seasonally adjusted data						Year on year growth rates, working day adjusted data					
			Q2-03	Q3-03	Q4-03	Q1-04	Q2-04	Q3-04	Q2-03	Q3-03	Q4-03	Q1-04	Q2-04	Q3-04
Total industry	C-E	100.0	-0.8	0.7	1.0	0.1	1.0	0.2	-0.9	-0.3	1.4	1.0	3.0	2.4
Mining of coal and lignite	10	0.5	3.3	-0.1	2.0	-1.1	-3.7	-10.8	-4.1	-4.9	2.3	4.5	-2.9	-13.6
Extr. petroleum / natural gas	11	0.9	-8.7	5.4	4.4	-0.3	-2.5	6.6	-8.4	-7.2	1.6	0.0	6.5	8.1
Mining of metal ores	13	0.0	-1.2	6.3	1.0	-3.1	8.5	-4.9	2.9	1.0	-1.9	2.5	13.0	1.0
Other non-metallic mining	14	0.6	-0.6	-2.3	2.6	0.4	-2.7	-4.6	0.9	-2.2	2.0	-0.4	-2.0	-4.6
Food and beverages	15	9.1	0.4	0.9	-0.6	1.3	-0.4	-0.3	0.7	1.9	-0.2	2.1	1.2	0.0
Tobacco	16	0.4	-3.6	-5.4	-1.9	-1.3	-4.0	0.2	-5.9	-11.5	-12.0	-11.2	-12.1	-7.3
Textiles	17	2.4	-2.9	-0.5	-0.4	-2.2	0.5	-1.3	-5.6	-5.5	-4.6	-5.9	-2.4	-3.1
Clothing	18	1.5	-1.6	1.1	-1.8	-1.1	1.0	-3.0	-6.3	-3.2	-4.4	-4.1	0.5	-4.4
Leather products	19	0.9	-3.5	-1.5	-2.1	-2.6	-2.9	-3.2	-8.5	-8.1	-7.3	-9.0	-8.7	-10.2
Wood products	20	1.8	-0.1	1.4	0.7	1.6	-0.4	0.2	-1.0	0.6	1.3	3.8	3.3	2.0
Pulp & paper	21	2.6	-0.2	1.1	1.2	0.7	1.5	0.4	0.6	2.5	3.1	2.7	4.6	3.8
Publishing & printing	22	4.9	0.2	0.4	1.1	2.1	0.2	0.9	-1.0	-0.9	0.8	4.1	3.8	4.3
Refined petroleum prod.	23	1.9	0.0	1.8	-0.3	1.9	1.8	-1.8	1.5	4.2	5.5	3.3	5.3	1.6
Chemicals	24	9.8	-0.7	0.5	2.2	-2.3	0.9	0.7	0.2	0.7	5.1	-0.3	1.1	1.5
Rubber & plastics	25	4.1	-0.6	1.9	1.0	0.2	0.9	-0.8	-0.3	1.4	2.6	2.5	4.3	1.3
Non-metallic minerals	26	4.3	-0.3	-0.2	1.1	0.2	0.9	-0.4	-1.4	-0.9	0.4	0.8	2.2	1.8
Basic metals	27	3.7	-1.8	0.2	2.2	0.6	1.0	-0.4	-1.7	-2.5	0.6	1.1	4.1	3.5
Metal products	28	8.4	-1.1	1.8	1.2	0.7	0.6	-0.8	-1.7	-0.5	1.5	2.6	4.4	1.6
Machinery	29	10.0	-2.1	1.2	1.2	0.6	1.8	-0.3	-3.8	-2.2	-1.3	1.0	5.0	3.3
Office machinery	30	0.9	-0.7	1.7	2.8	-1.8	2.0	0.7	-2.6	0.9	8.6	0.5	5.2	4.6
Electrical machinery	31	4.7	-0.6	0.0	1.9	0.6	2.2	0.0	-1.1	-2.9	0.9	1.8	5.1	4.7
Radio/TV/communication	32	3.6	-0.7	1.4	3.0	1.6	2.0	5.5	-1.6	2.9	6.2	4.3	7.4	13.8
Medical and optical	33	2.8	-1.2	0.4	2.0	-0.4	0.5	0.1	-0.1	-0.4	3.7	1.0	2.4	2.1
Motor vehicles	34	7.1	-2.6	0.0	3.5	-0.5	3.9	1.3	-0.8	-2.3	2.7	0.5	7.5	8.3
Other transport	35	2.1	1.8	0.5	0.8	-6.0	2.6	1.4	1.5	4.1	5.4	-3.8	-2.4	-1.5
Furniture & other manf.	36	2.9	-1.8	0.5	0.4	0.4	0.2	-1.9	-6.4	-3.1	-0.9	-0.3	1.7	-0.8
Elec./gas/hot water	40	7.0	-0.4	1.0	-1.3	2.5	-0.8	1.3	2.9	3.3	2.7	1.8	1.3	1.7
Water	41	0.7	:	:	:	:	:	:	:	:	:	:	:	:

Production index for industrial NACE Divisions in the EU (continued)

Table 10 provides a more detailed picture of the evolution of the index of industrial production, with data provided at the NACE Division level (2-digits). The information presented shows that the majority of the industrial activities presented in the table recorded a decrease in output between the second and third quarters of 2004. The largest decreases were registered for the mining of coal and lignite, the manufacture of clothing, the manufacture of leather products and the collection, purification and distribution of water. In each of these sectors output fell by more than 3 %.

On the basis of an annual comparison between the third quarters of 2003 and 2004, the EU-25's production index decreased at its most rapid pace for the manufacture of leather products (-11.2 %); while the manufacture of radio, television and communications equipment reported 14.1 % growth during the same period.

Tables 11 to 13 present the evolution of the index of production among the three largest industrial activities in the EU-25. Chemical products (NACE Division 24) was the only one of the three sectors to record growth in output during the third quarter of 2004, as production rose by 0.7 % compared with the quarter before.

For the third time in the last four quarters, a decline in output was registered for the manufacture of food and beverages in the EU-25, falling 0.3 % between the second and third quarters of 2004.

There was a similar contraction of output (-0.2 %) registered in the third quarter of 2004 for the EU-25's machinery and equipment sector (NACE Division 29), which could be contrasted with rapid growth of 1.9 % the quarter before.

Production index for three largest NACE Divisions within total industry (excluding construction)

	Quarter on quarter growth rates, seasonally adjusted data						Year on year growth rates, working day adjusted data					
	Q2-03	Q3-03	Q4-03	Q1-04	Q2-04	Q3-04	Q2-03	Q3-03	Q4-03	Q1-04	Q2-04	Q3-04
EU-25	0.2	0.9	-0.4	1.0	-0.2	-0.3	0.8	1.7	0.2	2.1	1.3	0.0
EU-15	0.0	0.9	-0.6	0.9	-0.1	-0.2	0.4	1.5	-0.1	1.6	1.2	0.0
Euro-zone	0.4	0.9	-0.6	1.3	-0.4	-0.3	0.7	1.9	-0.2	2.1	1.2	0.0
BE	0.3	2.5	-0.4	1.9	1.4	-0.5	3.1	4.1	2.0	4.6	5.8	2.3
CZ	2.0	0.4	-0.2	0.0	-1.0	0.8	3.7	3.4	2.6	2.0	-1.0	-0.3
DK	-6.7	0.1	3.7	-2.3	-1.3	1.3	0.4	5.6	4.8	-4.7	0.1	1.2
DE	2.1	-0.6	-0.6	4.1	-2.1	0.1	2.4	0.2	0.0	2.5	0.1	0.7
EE	-0.8	6.5	-2.0	1.6	1.1	-1.0	-2.2	3.1	2.3	6.1	8.1	-1.3
EL	1.2	-5.5	5.4	-1.3	2.1	0.4	-0.3	-5.8	-4.3	-0.4	0.2	6.8
ES	2.2	1.6	-0.2	-0.2	1.0	0.5	0.9	3.8	1.4	3.3	2.3	1.0
FR	-0.2	0.9	-1.6	1.5	-0.5	-0.4	-0.5	1.9	-3.2	0.6	0.0	-1.3
IE	2.3	3.8	1.2	7.5	-0.5	-7.2	0.3	10.3	12.0	15.0	12.3	0.8
IT	-0.5	1.4	0.6	-0.2	-1.9	-0.5	1.1	3.2	1.2	1.2	-0.4	-2.2
CY	-1.2	4.6	2.7	-4.2	-0.7	:	-2.8	3.5	12.4	1.5	1.7	:
LV	6.3	1.3	-0.7	4.8	-1.1	0.4	8.1	8.8	3.7	12.2	4.0	3.3
LT	-0.6	-0.2	2.3	-0.5	7.0	-7.1	7.3	10.2	11.4	1.2	8.5	0.9
LU	-3.1	6.0	-8.2	5.2	-5.7	:	-7.5	5.2	-9.0	-0.4	-3.7	:
HU	1.5	0.9	-1.9	2.9	-6.5	0.4	-2.3	2.1	-2.0	3.6	-5.1	-5.7
MT	:	:	:	:	:	:	:	:	:	:	:	:
NL	-1.1	-0.3	0.6	-2.3	0.5	c	-2.9	-3.0	-0.8	-2.4	-1.2	c
AT	0.3	0.8	-2.9	1.5	1.9	:	1.1	1.9	-3.7	-0.2	1.4	:
PL	2.8	1.2	1.5	3.7	-3.2	0.0	8.3	5.2	5.1	10.6	4.4	1.8
PT	-0.9	5.9	-1.7	0.8	1.7	0.1	-4.1	3.1	-1.2	3.6	6.3	1.7
SI	2.5	5.1	-3.8	1.6	:	:	2.2	8.6	3.1	5.2	:	:
SK	1.4	-1.3	-5.5	4.3	-0.3	5.2	3.1	-1.0	-4.6	-1.4	-3.1	3.1
FI	-0.6	1.3	0.8	-1.8	0.8	0.1	-0.6	2.8	2.0	-0.1	1.0	-0.1
SE	1.5	-2.3	1.0	0.2	-0.6	-3.0	-0.8	-5.8	-0.8	0.4	-0.9	-3.1
UK	-0.8	0.8	-0.4	0.1	1.4	-1.0	-0.5	0.2	-0.2	1.0	1.5	0.2
BG	13.9	0.8	6.7	4.9	-1.1	3.4	23.8	21.8	28.2	29.0	11.3	14.3
RO	5.2	1.3	-4.6	-2.5	-1.0	-1.2	11.3	10.7	-0.8	-1.8	-7.0	-9.4
TR	:	:	:	:	:	:	:	:	:	:	:	:

Table 11: Production index for food products and beverages, growth rates (%)

**Production index for the three largest NACE Divisions within total industry
(excluding construction) (continued)**

	Quarter on quarter growth rates, seasonally adjusted data						Year on year growth rates, working day adjusted data					
	Q2-03	Q3-03	Q4-03	Q1-04	Q2-04	Q3-04	Q2-03	Q3-03	Q4-03	Q1-04	Q2-04	Q3-04
EU-25	-1.3	1.5	1.1	0.7	1.9	-0.2	-2.6	-0.8	0.0	1.9	5.4	3.5
EU-15	-1.4	1.3	1.0	0.7	1.9	-0.2	-2.9	-1.3	-0.5	1.5	5.1	3.4
Euro-zone	-2.1	1.2	1.2	0.6	1.8	-0.1	-3.8	-2.2	-1.3	1.0	5.0	3.5
BE	-1.4	4.2	1.0	1.7	1.7	6.2	-5.1	-0.6	2.8	5.8	8.3	11.0
CZ	0.4	1.4	-1.3	-1.1	3.7	3.8	5.6	11.6	3.7	-2.1	2.8	6.1
DK	-0.8	1.9	0.4	7.8	2.0	-5.4	-4.5	-2.0	-2.2	8.4	11.8	4.5
DE	-2.9	1.4	1.4	0.3	2.4	-0.1	-3.7	-1.8	-0.5	0.3	5.4	4.1
EE	12.1	5.6	17.3	-5.9	-5.7	6.7	-8.5	-2.6	27.1	29.5	9.9	10.8
EL	-1.6	-1.3	-8.5	6.2	10.4	-8.0	4.8	-5.0	-17.0	-4.4	7.4	-1.3
ES	0.1	-0.2	4.2	1.3	-1.0	1.6	-2.4	-1.7	1.6	5.6	4.4	6.5
FR	-1.1	-0.1	1.9	1.6	0.1	-0.7	-3.2	-2.1	0.1	1.1	4.9	3.3
IE	1.7	-6.5	1.8	-0.9	-9.2	2.4	7.4	-1.3	-1.5	-5.0	-14.2	-6.8
IT	-2.8	1.5	-0.2	0.7	1.6	-2.1	-4.1	-4.8	-5.3	-0.7	3.9	-0.3
CY	1.5	0.8	12.0	-12.4	5.5	:	-15.2	-12.5	12.3	-0.2	4.4	:
LV	13.9	-2.2	13.0	-15.0	3.9	4.9	22.7	14.9	35.3	6.9	-3.3	5.7
LT	7.4	-1.6	-3.3	14.1	-0.9	-3.5	6.8	0.1	-3.5	19.0	6.4	4.7
LU	4.0	-0.3	-8.4	13.4	-5.8	:	7.9	18.6	-12.7	2.4	-2.5	:
HU	-1.4	6.2	5.3	-0.3	-2.8	-3.2	-1.9	3.9	4.4	10.5	8.4	-1.2
MT	:	:	:	:	:	:	:	:	:	:	:	:
NL	-0.2	-0.6	0.3	1.1	0.5	c	-6.7	-4.9	-5.0	0.5	1.0	c
AT	-0.1	4.0	-1.9	7.9	-0.9	:	-6.3	7.6	2.2	10.1	9.1	:
PL	5.8	10.5	4.8	4.5	3.0	-2.5	8.3	19.5	26.2	27.9	24.7	9.7
PT	-2.7	0.7	-2.3	1.1	-1.4	-0.1	-5.3	-3.9	-7.0	-3.1	-2.0	-3.5
SI	-8.6	4.8	3.4	-6.7	:	:	0.0	8.6	13.3	-7.7	:	:
SK	0.5	3.8	4.7	6.7	4.3	1.9	11.6	10.0	5.3	17.9	22.2	17.4
FI	-1.5	3.4	4.2	-1.7	6.0	-7.5	-4.2	-1.1	5.6	3.8	12.5	0.5
SE	0.1	2.4	-4.1	2.0	0.8	-1.3	8.5	8.6	2.1	0.1	1.1	-1.7
UK	2.8	1.1	1.4	-1.9	6.3	-1.5	0.5	1.7	5.0	4.2	5.8	4.2
BG	-17.3	2.9	5.8	18.2	5.1	2.9	3.2	3.9	9.3	9.8	35.5	34.7
RO	-11.7	3.5	8.4	-4.2	7.1	5.7	-14.7	-5.3	-4.8	-4.7	15.7	17.5
TR	:	:	:	:	:	:	:	:	:	:	:	:

Table 12: Production index for machinery and equipment, growth rates (%); source: Eurostat STS

	Quarter on quarter growth rates, seasonally adjusted data						Year on year growth rates, working day adjusted data					
	Q2-03	Q3-03	Q4-03	Q1-04	Q2-04	Q3-04	Q2-03	Q3-03	Q4-03	Q1-04	Q2-04	Q3-04
EU-25	-0.2	0.6	2.0	-1.4	0.9	0.7	0.8	1.1	5.2	1.1	2.0	2.2
EU-15	-0.3	0.6	2.0	-1.5	0.9	0.8	0.4	0.9	5.0	0.8	1.8	2.1
Euro-zone	-0.6	0.4	1.9	-2.0	1.2	1.2	0.2	0.7	5.1	-0.3	1.4	2.4
BE	-1.5	4.1	3.1	-3.9	2.8	6.6	-0.1	5.2	12.7	1.4	5.5	8.8
CZ	1.4	2.8	0.1	4.1	1.5	-0.6	8.4	5.0	7.1	10.0	9.4	3.7
DK	0.9	4.1	-1.5	-6.1	-10.8	-1.0	-6.7	-1.6	2.1	-3.0	-14.3	-18.3
DE	-0.9	-2.0	1.6	0.3	0.1	2.9	0.9	-2.3	1.3	-1.3	0.0	5.0
EE	13.4	5.4	5.5	2.7	-1.3	7.6	10.8	14.9	34.3	29.8	11.4	15.6
EL	0.1	5.0	0.4	0.4	5.8	-0.7	5.8	10.5	5.5	5.5	12.8	6.1
ES	-1.6	0.8	-2.2	0.2	0.7	3.4	3.7	3.7	-0.5	-3.0	-0.6	2.0
FR	-1.5	1.2	1.4	0.1	1.7	2.0	2.0	2.1	5.8	1.7	5.3	4.7
IE	-2.3	4.3	14.9	-16.7	-2.7	0.3	-4.0	1.9	20.4	-2.2	-2.4	-8.3
IT	0.0	-0.1	-0.7	2.5	-0.3	1.2	-2.5	-2.7	-3.1	1.6	1.1	3.0
CY	2.6	-3.2	3.2	1.8	2.5	:	-2.2	-5.5	-1.1	4.3	3.8	:
LV	-10.4	28.2	-5.7	11.1	5.8	-6.1	-25.4	-9.8	-5.0	20.3	42.4	4.5
LT	-6.6	6.5	-3.5	-10.0	15.0	-9.5	13.2	-5.0	-6.9	-13.6	7.6	-9.2
LU	4.6	-10.3	-3.2	4.2	-3.1	:	8.5	-0.4	-1.9	-5.5	-12.7	:
HU	-0.5	6.3	1.3	2.0	0.3	0.6	2.8	9.8	9.6	8.6	10.0	4.8
MT	:	:	:	:	:	:	:	:	:	:	:	:
NL	0.3	0.0	1.8	-0.2	1.2	-4.1	2.3	4.0	3.4	2.0	3.5	-2.3
AT	-2.4	-2.2	2.3	-4.8	2.7	:	1.6	0.2	8.1	-6.9	-2.1	:
PL	4.1	1.1	2.1	2.7	2.1	-2.0	16.9	9.0	9.9	10.0	8.3	3.7
PT	-1.5	3.0	1.1	-1.3	-3.2	-2.1	2.1	4.5	4.2	1.3	-0.5	-5.7
SI	2.9	-17.6	39.6	-11.5	:	:	28.2	-6.1	40.3	4.9	:	:
SK	-5.9	-3.3	-2.1	0.4	-0.4	5.5	-12.6	-9.0	-10.6	-9.9	-6.5	4.3
FI	-3.5	1.9	-1.1	-1.7	3.0	-1.4	0.3	-0.5	-0.7	-4.5	1.8	-1.1
SE	2.1	2.0	1.7	0.8	2.3	1.1	12.1	11.6	10.5	3.3	8.1	6.9
UK	0.9	1.2	2.2	1.6	-0.1	-1.4	0.0	0.5	4.0	6.8	4.5	2.1
BG	5.0	3.2	-4.1	0.6	12.1	-4.0	11.7	17.0	6.0	4.6	11.4	3.7
RO	5.1	-4.9	8.2	21.9	-4.7	22.4	16.2	-3.8	-1.5	32.1	19.6	52.8
TR	:	:	:	:	:	:	:	:	:	:	:	:

Table 13: Production index for chemicals and chemical products, growth rates (%); source: Eurostat STS

Manufacturing industries working on orders

There was a considerable difference in the rhythm of development observed for the respective indices of new orders and production for EU-25 manufacturing industries working on orders during the first half of 2004. The pace at which new orders grew was often significantly faster than that of production, the first time that such an evolution was witnessed since late 2000 (see Figure 2). Nevertheless, the latest developments for new orders (as reported in Table 14) show that orders fell by 1.5 % in the third quarter of 2004 in the EU-25 and by 1.8 % in the euro-zone in comparison with the second quarter of 2004. This was in stark contrast to growth of 5.0 % or more for both European aggregates in the second quarter of 2004. These figures were particularly influenced by the erratic evolution of orders for other transport equipment (-23.5 % in the third quarter of 2004, after growth of more than 30 % in the second quarter of 2004). The fastest expansion of new orders in the EU-25 in the third quarter of 2004 was recorded for basic metals, chemicals, and office machinery and computers.

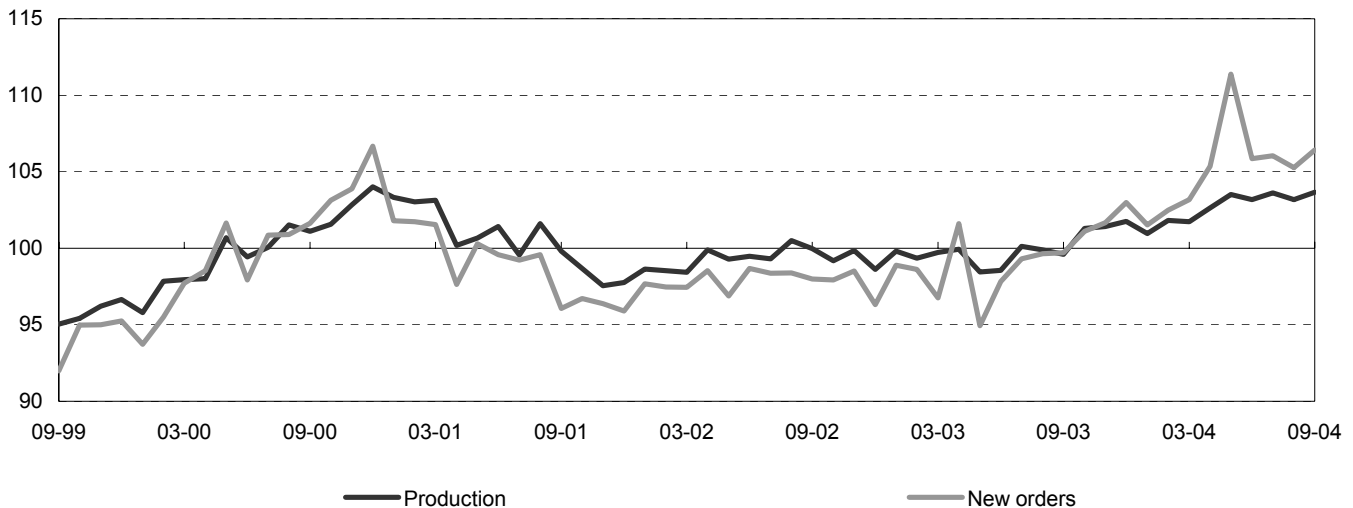


Figure 2: Monthly new orders and production indices for manufacturing industries working on orders, seasonally adjusted, EU-25 (2000=100); source: Eurostat STS

	Quarter on quarter growth rates, seasonally adjusted data						Year on year growth rates, gross data					
	Q2-03	Q3-03	Q4-03	Q1-04	Q2-04	Q3-04	Q2-03	Q3-03	Q4-03	Q1-04	Q2-04	Q3-04
EU-25	0.0	1.5	2.4	0.5	5.0	-1.5	-0.3	1.5	4.5	5.8	9.8	6.2
EU-15	-0.2	1.2	2.3	0.0	5.1	-1.8	-0.8	0.7	3.9	4.6	9.0	5.5
Euro-zone	-1.6	1.5	3.7	0.0	6.1	-1.8	-2.4	-0.5	4.3	4.8	11.8	7.8
BE	-2.5	-1.8	4.1	3.1	6.6	8.2	-4.4	-3.9	-0.1	2.9	12.6	24.2
CZ	2.2	9.7	-2.5	5.9	14.4	-0.5	10.2	12.6	7.6	15.6	29.5	16.5
DK	-0.6	6.9	-3.6	-2.6	1.8	-1.4	-6.8	3.8	-1.5	1.1	2.0	-6.1
DE	-2.2	1.2	3.3	1.0	2.8	0.3	-3.5	-0.1	4.0	5.1	10.1	7.6
EE	:	:	:	:	:	:	:	:	:	:	:	:
EL	:	:	:	:	:	:	:	:	:	:	:	:
ES	c	c	c	c	c	c	c	c	c	c	c	c
FR	-0.8	1.5	2.5	0.6	16.6	-9.6	-0.9	-1.7	6.0	4.3	23.6	8.7
IE	:	:	:	:	:	:	:	:	:	:	:	:
IT	-0.1	0.3	3.7	0.2	0.3	1.3	-4.4	-4.8	0.5	5.2	4.6	4.7
CY	:	:	:	:	:	:	:	:	:	:	:	:
LV	15.9	10.7	-8.0	2.1	-0.1	2.8	22.3	43.9	21.1	20.9	3.5	-3.2
LT	7.9	21.9	15.3	23.5	25.8	13.1	-2.2	9.8	17.4	87.9	121.9	102.5
LU	-6.4	-1.5	6.7	6.1	5.1	:	-3.9	-5.7	1.7	4.2	16.7	:
HU	10.0	5.3	8.9	-4.1	4.8	2.0	9.3	15.4	17.1	23.3	15.0	10.9
MT	1.9	1.0	-2.8	2.9	-1.9	:	3.1	5.0	-18.3	2.8	-0.8	:
NL	c	c	c	c	c	c	c	c	c	c	c	c
AT	-1.6	4.9	2.4	3.2	10.6	:	-4.1	4.1	5.2	10.3	22.9	:
PL	2.8	6.9	10.1	28.6	-10.8	5.3	7.4	25.3	24.9	58.3	34.7	32.6
PT	-6.6	3.4	0.9	-2.6	5.6	-0.2	-2.0	2.3	-1.9	-5.1	7.5	2.7
SI	:	:	:	:	:	:	:	:	:	:	:	:
SK	6.2	8.8	0.9	1.3	6.7	6.7	24.0	32.2	27.1	16.9	18.1	17.1
FI	c	c	c	c	c	c	c	c	c	c	c	c
SE	2.8	0.9	-1.3	7.1	-0.8	1.4	-1.1	7.1	2.9	10.4	6.1	6.2
UK	c	c	c	c	c	c	c	c	c	c	c	c
BG	-4.1	6.6	13.1	1.1	7.3	3.2	3.4	14.1	20.0	16.4	30.8	26.8
RO	4.2	1.3	23.0	-1.5	9.8	:	26.8	12.2	40.0	27.4	36.4	:
TR	:	:	:	:	:	:	:	:	:	:	:	:

Table 14: Total new orders index for manufacturing industries working on orders, growth rates (%); source: Eurostat STS

Manufacturing industries working on orders (continued)

EU-25

	Quarter on quarter growth rates, seasonally adjusted data						Year on year growth rates, gross data					
	Q2-03	Q3-03	Q4-03	Q1-04	Q2-04	Q3-04	Q2-03	Q3-03	Q4-03	Q1-04	Q2-04	Q3-04
Manufacturing industries working on orders	0.0	1.5	2.4	0.5	5.0	-1.5	-0.3	1.5	4.5	5.8	9.8	6.2
Textile and textile products (17)	-1.4	-0.7	-1.7	-0.8	0.5	-1.0	-5.1	-3.2	-5.7	-3.2	-2.5	-2.8
Wearing apparel (18)	-0.9	1.9	-1.1	4.6	-2.9	-1.4	-7.2	-3.7	-3.8	8.0	1.2	-3.0
Pulp, paper and paper products (21)	-1.8	0.2	0.3	0.5	2.2	-1.0	-2.8	-1.7	-1.6	-0.5	3.7	1.5
Chemicals and chemical products (24)	0.0	-0.7	1.9	-0.1	2.6	4.3	1.3	0.9	3.3	1.3	3.6	8.7
Basic metals (27)	-4.1	3.8	5.6	5.9	9.0	7.8	-4.0	0.7	6.4	11.9	26.5	30.9
Fabricated metal products (28)	-1.4	3.0	1.3	5.2	2.2	0.9	-1.6	0.2	0.8	8.8	12.3	9.4
Machinery and equipment (29)	-1.4	3.0	5.3	0.0	2.3	-0.8	-3.8	0.1	5.8	7.5	10.8	6.5
Office machinery and computers (30)	0.5	0.5	3.6	-1.2	1.1	3.1	-7.1	0.7	7.7	1.7	3.3	8.4
Electrical machinery and apparatus (31)	4.0	-1.1	6.0	-1.1	3.5	-1.2	3.9	1.3	6.4	8.0	7.5	6.9
Radio, TV & communication equipment (32)	-1.7	6.2	3.3	-1.5	-2.0	2.2	-1.0	7.9	7.2	6.8	5.7	1.6
Medical, precision, optical inst., watches, clocks (33)	1.0	3.5	2.9	-2.8	2.8	0.2	-2.6	6.2	9.4	5.7	6.3	2.5
Motor vehicles, trailers and semi-trailers (34)	2.1	1.8	2.2	2.5	0.2	-0.5	3.0	2.7	5.7	9.4	7.0	3.8
Other transport equipment (35)	12.7	0.0	-2.3	-1.4	33.2	-23.5	16.4	7.9	11.9	0.7	41.1	-6.5

EU-15

	Quarter on quarter growth rates, seasonally adjusted data						Year on year growth rates, gross data					
	Q2-03	Q3-03	Q4-03	Q1-04	Q2-04	Q3-04	Q2-03	Q3-03	Q4-03	Q1-04	Q2-04	Q3-04
Manufacturing industries working on orders	-0.2	1.2	2.3	0.0	5.1	-1.8	-0.8	0.7	3.9	4.6	9.0	5.5
Textile and textile products (17)	-1.2	-0.8	-2.0	-0.5	-0.5	-1.2	-5.6	-3.4	-6.1	-3.9	-3.7	-4.1
Wearing apparel (18)	-0.8	1.0	-1.5	5.0	-4.1	-0.4	-7.8	-5.0	-4.7	7.1	-2.4	-3.2
Pulp, paper and paper products (21)	-1.9	0.0	0.3	0.3	2.4	-1.1	-3.1	-2.1	-2.0	-0.6	3.3	1.3
Chemicals and chemical products (24)	-0.2	-0.3	1.6	-0.1	2.7	3.7	1.0	0.7	2.8	1.2	3.8	7.9
Basic metals (27)	-4.3	1.9	6.5	6.3	8.4	7.6	-4.7	-1.5	5.4	11.0	25.1	31.5
Fabricated metal products (28)	-1.8	2.3	1.7	4.7	2.2	0.6	-2.0	-0.6	0.6	7.5	11.4	9.0
Machinery and equipment (29)	-1.4	2.6	5.4	-0.4	2.6	-1.2	-4.3	-0.5	5.3	6.8	10.5	6.1
Office machinery and computers (30)	0.6	0.0	1.7	-3.2	-1.9	-0.3	-7.2	-0.7	6.0	-1.5	-3.6	-3.4
Electrical machinery and apparatus (31)	3.5	-2.6	6.0	-3.3	3.2	-0.8	4.7	1.0	7.5	4.0	3.2	4.8
Radio, TV & communication equipment (32)	-1.1	5.8	1.0	-0.9	-1.7	0.1	-4.0	6.0	4.4	5.5	4.1	-1.7
Medical, precision, optical inst., watches, clocks (33)	1.0	3.7	3.0	-3.5	2.5	0.2	-2.8	6.5	9.9	5.1	5.5	1.5
Motor vehicles, trailers and semi-trailers (34)	0.4	1.5	1.8	1.4	0.9	0.0	1.7	1.2	4.5	6.5	6.0	3.6
Other transport equipment (35)	13.0	-0.3	-3.0	-5.3	42.8	-27.6	17.2	7.1	11.7	-2.1	41.3	-8.6

Euro-zone

	Quarter on quarter growth rates, seasonally adjusted data						Year on year growth rates, gross data					
	Q2-03	Q3-03	Q4-03	Q1-04	Q2-04	Q3-04	Q2-03	Q3-03	Q4-03	Q1-04	Q2-04	Q3-04
Manufacturing industries working on orders	-1.6	1.5	3.7	0.0	6.1	-1.8	-2.4	-0.5	4.3	4.8	11.8	7.8
Textile and textile products (17)	-2.8	-0.8	-2.2	-0.4	1.0	-0.8	-6.9	-4.7	-8.3	-4.6	-2.2	-2.4
Wearing apparel (18)	-2.9	2.4	-1.3	6.6	-3.9	-0.3	-9.7	-5.8	-4.2	7.4	2.0	-0.8
Pulp, paper and paper products (21)	-2.9	-0.2	1.1	-0.3	2.4	-1.0	-4.1	-3.5	-2.2	-2.2	3.3	1.8
Chemicals and chemical products (24)	-2.1	0.6	1.9	-0.4	3.3	4.1	-1.6	-0.7	2.0	0.2	5.4	9.0
Basic metals (27)	-3.8	1.4	7.2	5.2	9.8	9.1	-3.3	-0.7	6.3	10.8	25.7	34.1
Fabricated metal products (28)	-1.6	1.8	2.2	3.1	3.6	0.3	-1.6	0.1	1.6	7.4	11.2	8.7
Machinery and equipment (29)	-2.0	2.1	5.6	-1.2	3.1	0.0	-4.5	-0.4	4.6	6.5	9.9	6.9
Office machinery and computers (30)	5.9	1.4	4.2	-5.9	-1.0	2.0	3.5	12.4	24.1	4.6	-1.5	-1.3
Electrical machinery and apparatus (31)	1.6	-0.4	6.1	-3.5	3.6	-1.2	3.7	2.8	9.1	3.7	5.8	4.6
Radio, TV & communication equipment (32)	-4.3	7.9	1.7	-1.7	-0.5	-0.9	-2.0	9.0	8.3	3.5	7.0	-1.8
Medical, precision, optical inst., watches, clocks (33)	1.3	4.1	2.5	-3.1	1.9	1.3	-5.8	6.2	10.3	4.5	4.9	2.3
Motor vehicles, trailers and semi-trailers (34)	-1.8	1.4	3.5	1.3	2.7	-0.6	-0.6	-2.0	4.4	7.0	9.3	6.5
Other transport equipment (35)	-3.9	9.9	8.2	7.0	28.8	-14.4	-3.0	-10.4	12.6	10.8	90.7	18.8

Table 15: Total new orders indices for selected manufacturing industries working on orders, growth rates (%);
source: Eurostat STS

➤ ESSENTIAL INFORMATION – METHODOLOGICAL NOTES

The **legal basis** for the production index is the **Council Regulation No 1165/98** of 19 May 1998 concerning short-term statistics¹ (STS-R).

The **production index** is an important business cycle indicator which shows the monthly activity of the industrial sector, which is the one of the most volatile components of the economy.

The coverage of the production index according to the STS-R includes all activities listed in Sections C to E (mining and quarrying, manufacturing, and electricity, gas and water supply) of the NACE Rev. 1² classification, except Division 41 (collection, purification and distribution of water) and Group 40.3 (steam and hot water supply).

The coverage of the new orders index includes NACE Divisions 17, 18, 21, 24, and Divisions 27 to 35.

Definition

As specified in the STS-R, and in line with traditional practice in business statistics, **the production index should show the evolution of value added at factor cost**, at constant prices. Value added at factor cost can be calculated from turnover (excluding VAT), plus capitalised production, plus other operating income, plus or minus the changes in stocks, minus the purchases of goods and services, minus other taxes on products and taxes linked to production.

This index of production should take account of:

- variations in type and quality of the commodities and of the input materials;
- changes in stocks of finished goods and work in progress;
- changes in technical input-output relations (processing techniques) and;
- services such as the assembling of production units, mounting, installations, repairs, planning, engineering, creation of software.

The observation unit for this index is the kind-of-activity unit, though, for enterprises with few persons employed in secondary activities, the local unit or the enterprise may be used as a proxy.

The new orders index is defined as the value of the contract linking a producer and a third party with respect to future deliveries by the producer of the goods and services. The order is accepted if, in the producer's judgement, there is sufficient evidence for a valid agreement. New orders include all duties and taxes on the goods or services that will be invoiced by the unit with the exception of the VAT and other similar deductible taxes directly linked to turnover. All other charges (transport, packaging, etc.) that are passed on to the customer are also included. Orders that are passed on to sub-contractors are included.

Data transmission and calculation method

Data should be transmitted to Eurostat for the Main Industrial Groupings (MIGs) and at the 2-digit level of NACE Rev. 1 by all Member States. For Section D (manufacturing), data should be transmitted at the 3-digit and 4-digit levels by those Member States whose total value added for this Section represents more than 5% of the European Community total. The data are used to produce aggregated indicators for the Community as a whole, and for the group of Member States participating in the euro-zone.

The **weights** used for the production index are based on information from the Structural Business Statistics database or information coming directly from the Member States. **Eurostat uses gross value added at factor cost to calculate the weights for the production index and turnover to calculate the weights for new orders.** Weights and the base year are revised every five years. **The current base year is 2000.**

For the production index, Member States should transmit a working day adjusted index. They may also transmit seasonally adjusted and trend-cycle indices. If data are not transmitted in these forms, Eurostat produces the adjusted figures. For the index of new orders the Member States should transmit a gross index, Eurostat performs the seasonal adjustment.

For **the calculation of** the euro-zone, EU-15 and EU-25 **seasonally adjusted aggregates**, Eurostat aggregates working day adjusted or gross data from Member States. Seasonally adjusted euro-zone, EU-15 and EU-25 series are **produced using the TRAMO & SEATS method**. For these reasons, the euro-zone, EU-15 and EU-25 seasonally adjusted growth rates might differ from the weighted growth rates of the individual Member States.

Dissemination

Eurostat publishes detailed data and time series in Theme 4/EBT-domain of NewCronos.

Further information

Carmen Lipp-Lingua
Tel: +352-4301-35253,
Fax +352-4301-34359,
carmen.lipp-lingua@cec.eu.int

Abbreviations and symbols

: not available.
c confidential

¹ Official Journal No L 162, of 5 June 1998. Also available via the "Business Methods" Internet site: <http://forum.europa.eu.int/Public/irc/dsis/bmethods/home>.

² NACE Rev. 1 - Statistical classification of economic activities in the European Community, Eurostat, 1996 (ISBN 92-826-8767-8).

Further information:

➤ **Reference publications**

Title Quarterly Panorama of European Business statistics
Subscription number VPA000 Price EUR 100

➤ **Databases**

[EUROSTAT website/Industry, trade and services/Industry, trade and services - horizontal view/Short-term Business Statistics - Monthly and Quarterly \(Industry, Construction, Retail Trade and Other Services\)/Industry \(NACE Rev.1 C-F\)/Production indices \(2000=100\) and New orders indices \(2000=100\)](#)

Journalists can contact the media support service:

Bech Building Office A4/017 • L-2920 Luxembourg • Tel. (352) 4301 33408 • Fax (352) 4301 35349 •

E-mail: eurostat-mediasupport@cec.eu.int

European Statistical Data Support:

Eurostat set up with the members of the 'European statistical system' a network of support centres, which will exist in nearly all Member States as well as in some EFTA countries.

Their mission is to provide help and guidance to Internet users of European statistical data.

The complete details concerning this support network can be found on our Internet site: www.europa.eu.int/comm/eurostat/

A list of worldwide sales outlets is available at the:

Office for Official Publications of the European Communities.

2, rue Mercier – L-2985 Luxembourg

URL: <http://publications.eu.int>

E-mail: info-info-opoce@cec.eu.int

BELGIEN/BELGIQUE/BELGIË - DANMARK - DEUTSCHLAND - EESTI – ELLÁDA - ESPAÑA - FRANCE - IRELAND - ITALIA - KYPROS/KIBRIS – LUXEMBOURG - MAGYARORSZÁG – MALTA - NEDERLAND - ÖSTERREICH - POLSKA - PORTUGAL - SLOVENIJA - SLOVENSKO - SUOMI/FINLAND - SVERIGE - UNITED KINGDOM - BALGARIJA - HRVATSKA - ÍSLAND – NORGE - SCHWEIZ/SUISSE/SVIZZERA - AUSTRALIA - BRASIL - CANADA - EGYPT - MALAYSIA - MÉXICO - SOUTH KOREA - SRI LANKA - T'AI-WAN - UNITED STATES OF AMERICA

ORIGINAL TEXT: English