

QUARTERLY ACCOUNTS

Second quarter 2005

Expenditure side

Statistics
in focus

ECONOMY AND FINANCE

34/2005

National accounts
(incl. GDP)

Author

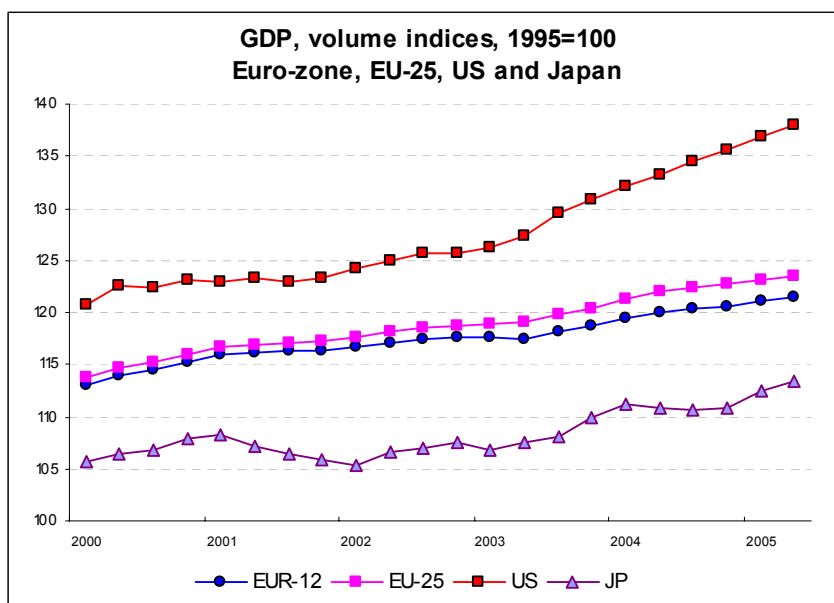
Roberto BARCELLAN

Contents

Percentage change over previous quarter	2
Percentage change over the same quarter of the previous year	3
Contribution of components to variation in GDP	4
Levels, in millions of euro, at current prices	5
GFCF by component: Percentage change over the previous period	6
GFCF by component: Percentage change over the same quarter of previous year	7



Manuscript completed on: 18.10.2005
Data extracted on: 13.10.2005
ISSN 1024-4298
Catalogue number: KS-NJ-05-034-EN-N
© European Communities, 2005



Eurostat estimates¹ concerning the second quarter 2005 indicate that Gross Domestic Product (GDP) increased by +0.3% in the euro-zone² and by +0.4% in the European Union (EU25), after +0.4% the first quarter 2005 in both zones.

During the second quarter of 2005, final consumption expenditure of households and NPISHs (non-profit institutions serving households) grew by +0.1% in the euro-zone and by +0.2% in the EU-25, after +0.1% in both zones in the first quarter 2005. Investments increased by 0.5% in the euro-zone and by 0.6% in the EU25, after decreasing by 0.2% in the euro-zone and remaining stable (0.0%) in the EU-25 the previous quarter. Exports increased in both the euro-zone (+1.9% against -0.5% in the previous quarter) and in the EU25 (+2.2% against -0.4% in the previous quarter). Imports experienced a bigger increase than exports in the euro-zone (+2.3% after -1.4% in the previous quarter) and in the EU25 (+2.2% after -1.3%).

With regard to the main partners of the EU25, GDP in the United States grew by +0.8% in the second quarter of 2005, down from +0.9% in the previous quarter. GDP in Japan increased by +0.8%, down from +1.4% in the first quarter 2005.

In comparison with the same period of the previous year GDP increased by +1.1% in the euro-zone and by +1.3% in the EU25, whereas it grew by +3.6% in the United States and by +2.2% in Japan.

¹ Methodological note: data for the euro-zone, EU25 and EU15 are calculated in a coherent statistical framework, using as indicators the data of all the Member States compiling quarterly accounts. Aggregations for the euro-zone, EU25 and EU15 were carried out using the seasonally adjusted data of the Member States. These data are also corrected for working days for Belgium, Germany, Spain, France, Italy, the Netherlands, Austria, Slovenia, Finland, Sweden and the United Kingdom.

² The euro-zone consists of Belgium, Germany, Greece, Spain, France, Ireland, Italy, Luxembourg, the Netherlands, Austria, Portugal and Finland.

T1 GDP AND EXPENDITURE COMPONENTS

EURO-ZONE, EU-25, EU-15, EU MEMBER STATES AND MAIN PARTNERS

t/t-1 Growth over previous quarter, seasonally adjusted, at constant prices (1995)

	GDP				Household and NPISH final consumption expenditure				Government final consumption expenditure				Gross fixed capital formation				Change in inventories ⁽¹⁾				Domestic demand				Exports				Imports				External balance ⁽¹⁾			
	2004		2005		2004		2005		2004		2005		2004		2005		2004		2005		2004		2005		2004		2005		2004		2005					
	Q3	Q4	Q1	Q2	Q3	Q4	Q1	Q2	Q3	Q4	Q1	Q2	Q3	Q4	Q1	Q2	Q3	Q4	Q1	Q2	Q3	Q4	Q1	Q2	Q3	Q4	Q1	Q2	Q3	Q4	Q1	Q2				
EURO-ZONE	0.3	0.2	0.4	0.3	0.2	0.8	0.1	0.1	0.4	-0.2	0.4	0.4	0.5	0.3	-0.2	0.5	0.1	0.1	0.0	0.2	0.7	0.5	0.0	0.4	1.3	0.5	-0.5	1.9	2.4	1.4	-1.4	2.3	2.5	2.1	2.5	2.4
EU-25	0.3	0.3	0.4	0.4	0.3	0.8	0.1	0.2	0.3	-0.1	0.4	0.4	0.6	0.5	0.0	0.6	0.4	0.4	0.2	0.2	0.7	0.5	0.0	0.4	1.1	0.7	-0.4	2.2	2.1	1.4	-1.3	2.2	1.2	0.9	1.3	1.3
EU-15	0.3	0.2	0.4	0.3	0.3	0.8	0.1	0.2	0.3	-0.1	0.4	0.4	0.5	0.5	-0.2	0.6	0.3	0.3	0.2	0.2	0.7	0.5	0.0	0.3	1.1	0.7	-0.5	2.1	2.2	1.4	-1.4	2.2	1.4	1.1	1.4	1.4
EU MEMBER STATES																																				
BE	0.9	0.3	0.0	0.3	0.4	0.1	0.3	0.4	1.5	1.2	-0.1	0.2	4.2	-2.5	3.3	3.4	0.8	0.5	0.0	0.5	1.9	-0.5	0.3	1.5	2.5	2.8	-2.8	-1.8	3.9	2.0	-2.6	-0.5	5.1	5.8	5.5	4.4
CZ	1.2	1.2	1.3	1.3	0.6	0.4	0.5	0.5	-0.8	-0.5	0.1	0.5	1.3	0.8	-0.1	0.7	1.2	-0.7	-0.7	-0.6	0.2	-0.7	-2.5	1.6	2.2	0.2	2.3	0.8	1.1	-1.6	-1.6	1.2	-12.7	-10.5	-6.4	-6.8
DK	0.1	0.8	0.4	1.6	1.1	1.7	1.0	1.1	-0.2	0.3	0.4	0.9	2.8	1.1	-6.7	7.3	1.2	0.6	0.8	0.4	2.4	0.6	-0.7	1.9	-1.1	0.4	5.3	3.6	3.5	-0.1	3.1	4.4	2.3	2.5	3.6	3.3
DE	-0.1	-0.1	0.8	0.0	0.0	0.8	-0.5	-0.3	0.4	-1.9	0.6	0.6	0.9	-0.4	-1.2	0.2	0.7	0.0	:	:	1.0	-0.1	-0.5	0.3	-0.5	0.5	2.5	1.2	2.4	0.5	-0.6	2.3	5.9	5.9	7.1	6.8
EE	3.4	0.6	2.8	2.8	0.7	2.2	1.1	:	3.1	3.7	-0.1	:	:	:	:	:	:	:	:	:	-2.4	3.3	-1.6	1.1	5.6	-1.5	11.0	2.7	-0.9	1.6	5.0	1.0	-16.4	-19.5	-14.4	-12.4
EL	1.8	-0.1	2.4	-0.3	:	:	:	:	:	:	:	:	:	:	:	:	:	:	:	:	2.3	0.8	1.8	-3.6	6.3	-2.7	-8.1	7.7	6.8	1.0	-6.8	-6.3	-10.1	-11.1	-10.4	-6.9
ES	0.7	0.9	0.9	0.9	1.5	1.6	0.6	1.0	0.9	0.0	2.1	1.5	1.7	3.3	0.9	1.4	1.2	1.1	0.8	1.2	1.4	1.6	0.7	1.5	1.4	-0.7	-1.9	3.2	3.5	1.7	-2.0	4.8	-6.8	-7.6	-7.4	-8.1
FR	0.1	0.7	0.4	0.1	-0.2	1.1	0.7	-0.2	0.2	0.6	0.2	0.3	-0.2	1.2	1.5	-0.2	1.9	1.6	1.5	1.8	0.6	0.7	0.6	0.2	0.2	1.0	-0.3	1.0	2.2	1.2	0.5	1.1	-1.1	-1.2	-1.4	-1.5
IE	-0.4	2.4	0.3	1.6	1.0	0.8	3.3	:	1.0	1.2	1.7	:	:	:	:	:	:	:	:	:	1.6	1.5	:	:	-2.0	2.1	-2.7	:	-0.6	1.2	:	:	19.7	20.4	:	:
IT	0.4	-0.4	-0.5	0.7	0.0	0.5	0.1	0.6	0.2	0.3	0.1	0.4	-1.5	-1.3	-0.8	1.5	-0.1	0.9	0.9	0.6	-0.6	1.0	0.0	0.5	4.5	-4.5	-4.7	5.6	1.2	0.1	-2.9	4.8	1.4	0.0	-0.5	-0.3
CY	0.8	0.7	1.3	0.7	0.8	-0.8	-1.0	2.5	-2.9	0.1	6.0	1.2	-0.4	7.7	-2.8	-1.5	1.3	6.0	1.2	2.4	-1.6	5.6	-4.7	2.7	0.6	-5.5	4.9	3.1	-3.8	4.3	-7.4	7.1	-3.2	-8.2	-1.8	-3.9
LV	2.7	2.0	2.5	3.3	:	:	:	:	:	:	:	:	:	:	:	:	:	:	:	:	1.0	3.0	1.7	:	5.9	2.0	5.9	:	1.9	3.9	3.7	:	-15.8	-17.0	-16.1	:
LT	1.8	1.6	0.2	3.3	1.6	1.8	2.1	2.8	3.8	4.1	-1.9	1.1	5.7	-4.5	3.1	2.3	12.6	13.3	15.1	15.5	1.9	1.1	3.0	2.9	2.8	4.1	2.4	3.0	2.6	2.6	5.3	2.5	-31.7	-31.0	-34.6	-34.0
LU	:	:	:	:	:	:	:	:	:	:	:	:	:	:	:	:	:	:	:	:	:	:	:	:	:	:	:	:	:	:	:	:	:	:	:	:
HU	0.8	1.1	0.9	1.2	0.6	0.5	0.9	0.8	-1.0	-0.1	1.2	1.2	4.4	-4.8	12.7	-1.4	-2.1	-2.5	-6.4	-6.9	-0.8	-1.5	0.2	-0.3	1.1	3.0	1.8	3.9	-0.6	0.3	1.1	2.5	-3.5	-0.9	-0.2	1.2
MT	0.6	0.6	-1.2	2.3	:	:	:	:	:	:	:	:	:	:	:	:	:	:	:	:	1.4	3.6	-3.6	1.2	-1.4	2.7	-8.2	1.3	-0.3	5.6	-9.6	0.2	-14.2	-17.7	-14.8	-13.6
NL	0.6	0.1	-0.8	1.2	0.4	-0.3	-0.5	0.5	-0.4	1.6	-1.8	0.1	0.6	1.5	-1.3	1.8	0.4	0.4	0.3	0.0	0.1	0.5	-1.0	0.3	2.5	3.4	-4.1	3.7	2.0	4.4	-4.7	2.9	7.7	7.3	7.5	8.3
AT	0.9	0.4	0.1	0.4	0.3	0.2	0.2	0.1	0.3	0.3	0.3	0.3	1.1	0.2	-1.2	-0.9	:	:	:	:	0.7	0.4	-0.1	0.0	1.5	0.1	0.2	1.1	1.2	0.1	-0.3	0.3	5.9	5.9	6.1	6.5
PL	0.7	0.8	1.4	-0.2	0.6	0.4	0.8	0.2	0.1	0.2	1.5	0.3	1.9	2.3	-1.6	2.0	0.0	0.0	0.0	:	2.4	0.9	-2.0	3.8	5.1	7.8	-9.8	2.0	10.1	8.1	-18.0	13.6	1.6	1.6	4.8	1.0
PT	-0.7	-0.2	0.3	1.0	0.5	0.8	0.4	1.3	0.6	0.3	0.1	-0.1	-1.0	-1.5	-0.6	0.3	1.3	1.2	1.2	0.6	0.4	0.2	0.1	0.3	-2.2	-0.2	-0.2	2.5	0.6	0.7	-0.5	0.4	-10.6	-10.9	-10.7	-9.9
SI	1.2	-0.4	1.2	2.6	0.9	0.8	0.8	1.4	1.0	0.7	-0.3	1.3	0.8	0.8	0.1	1.5	2.5	1.6	1.4	0.0	0.3	-0.4	-0.1	0.0	2.3	1.0	2.6	4.6	0.9	1.0	0.8	0.9	-3.8	-3.9	-2.6	0.1
SK	1.3	1.4	1.2	1.3	1.6	1.1	1.1	0.7	0.6	-0.7	-0.1	-2.3	2.2	0.6	3.5	2.8	2.7	3.1	2.8	3.5	5.7	-5.4	2.6	4.2	-2.6	8.0	-4.3	4.2	1.7	0.7	-3.2	7.3	-2.6	4.2	2.9	0.2
FI	1.3	0.1	-0.1	-1.6	0.7	0.9	0.9	0.8	0.3	0.3	0.4	0.4	-0.3	0.3	-2.0	-0.8	0.0	-0.8	-1.2	-2.0	-1.0	-0.3	-0.2	-0.5	5.5	2.1	2.3	-2.5	1.2	1.8	2.9	-0.3	13.2	13.6	13.7	12.7
SE	0.7	0.3	0.5	0.6	0.4	0.7	0.2	1.1	-0.3	0.1	0.1	0.2	2.3	2.3	1.7	2.2	-1.0	-1.7	:	:	1.6	0.2	0.0	0.7	-0.2	2.3	-1.4	1.5	1.5	2.7	-3.0	1.9	14.2	14.3	14.7	14.7
UK	0.3	0.5	0.3	0.5	0.4	0.6	0.1	0.4	0.2	0.3	0.5	0.5	0.5	0.8	0.0	1.0	1.7	2.2	2.2	0.1	0.5	0.8	0.2	-0.1	1.0	1.1	-0.7	4.4	1.5	1.8	-0.8	1.9	-8.2	-8.5	-8.4	-7.7
EFTA																																				
NO	-0.8	1.1	0.3	1.3	0.9	1.3	-0.3	2.5	-0.3	0.4	1.1	0.4	5.3	10.5	-9.3	10.9	2.5	2.0	5.8	2.6	0.9	2.8	-0.5	2.4	-0.9	-1.1	-0.9	1.7	3.5	3.0	-3.2	4.7	1.8	0.2	1.1	0.0
CH	0.6	-0.1	0.2	0.3	0.1	0.1	0.8	0.4	-0.7	0.2	0.7	0.6	0.8	-1.1	-0.1	3.7	-1.2	-1.7	-1.5	:	0.9	-0.7	0.8	:	1.0	0.3	-1.0	:	1.7	-1.0	0.0	4.5	7.0	7.5	7.0	:
MAIN PARTNERS																																				
US	1.0	0.8	0.9	0.8	1.1	1.1	0.9	0.8	0.8	0.0	0.7	0.1	1.5	1.7	1.3	2.5	1.4	1.4	1.4	0.8	1.0	1.0	1.0	0.5	1.3	1.7	1.8	2.6	1.1	2.7	1.8	-0.1	-6.7	-7.0	-7.0	-6.6
JP	-0.1	0.1	1.4	0.8	0.0	-0.3	1.2	0.6	0.3	0.6	0.7	0.3	-0.1	0.3	1.6	1.6	0.1	0.2	0.5	0.3	0.0	0.1	1.6	0.6	0.7	1.6	-0.1	2.9	2.3	2.1	0.7	1.5	4.2	4.2	4.0	4.3

(1) Percentage of GDP. Change in inventories includes acquisitions less disposals of valuables.

: Data not available.

T2

GDP AND EXPENDITURE COMPONENTS
EURO-ZONE, EU-25, EU-15, EU MEMBER STATES AND MAIN PARTNERS

t/t-4

Growth over the same quarter of the previous year, seasonally adjusted, at constant prices (1995)

	GDP				Household and NPISH final consumption expenditure				Government final consumption expenditure				Gross fixed capital formation				Domestic demand				Exports				Imports			
	2004		2005		2004		2005		2004		2005		2004		2005		2004		2005		2004		2005		2004		2005	
	Q3	Q4	Q1	Q2	Q3	Q4	Q1	Q2	Q3	Q4	Q1	Q2	Q3	Q4	Q1	Q2	Q3	Q4	Q1	Q2	Q3	Q4	Q1	Q2	Q3	Q4	Q1	Q2
EURO-ZONE	1.9	1.6	1.3	1.1	1.1	1.9	1.3	1.3	1.1	0.6	0.9	1.0	1.5	1.1	0.7	1.1	2.3	1.9	1.6	1.7	6.4	6.1	3.8	3.1	7.9	7.4	4.9	4.6
EU-25	2.2	1.9	1.5	1.3	1.6	2.3	1.6	1.4	1.2	0.6	0.9	1.1	2.7	1.9	1.5	1.7	2.6	2.2	1.8	1.6	6.9	6.6	4.1	3.6	8.3	7.5	5.2	4.5
EU-15	2.1	1.8	1.4	1.2	1.6	2.3	1.6	1.4	1.2	0.6	0.9	1.0	2.5	1.7	1.3	1.5	2.5	2.1	1.8	1.6	6.4	6.2	3.7	3.4	7.9	7.3	5.0	4.5
EU MEMBER STATES																												
BE	3.1	2.6	1.8	1.5	2.1	2.0	1.5	1.2	2.8	3.6	3.0	2.8	4.1	3.1	3.1	8.7	3.5	2.0	1.9	3.2	6.6	8.2	4.7	0.6	7.4	7.8	5.0	2.7
CZ	4.5	4.7	4.9	5.0	1.8	1.5	1.7	2.0	-2.8	-3.4	-2.4	-0.7	7.6	7.0	3.4	2.8	3.2	0.6	-0.6	-1.4	28.1	20.3	18.1	5.6	23.0	13.3	10.5	-0.9
DK	2.0	2.6	2.1	3.0	3.5	4.6	4.7	5.0	1.9	1.3	0.6	1.4	6.4	4.6	1.9	4.1	5.1	4.2	3.1	4.2	3.5	4.0	8.4	8.2	10.3	7.5	11.1	11.3
DE	1.2	0.5	0.8	0.6	-0.1	1.1	0.1	0.0	-1.2	-2.9	-1.4	-0.3	-0.7	-1.7	-1.0	-0.5	1.3	0.1	-0.1	0.7	7.2	6.6	5.8	3.7	8.8	6.6	4.3	4.6
EE	8.1	6.7	7.2	9.9	1.0	3.9	7.9	:	6.3	8.9	4.5	:	:	:	:	:	4.7	9.3	8.0	0.2	18.2	10.5	16.3	18.6	12.5	12.7	16.0	6.6
EL	4.5	4.8	3.5	3.7	:	:	:	:	:	:	:	:	:	:	:	:	4.3	4.2	2.5	1.2	15.8	13.8	6.7	2.4	11.3	8.9	2.3	-5.8
ES	3.1	3.2	3.3	3.4	4.7	4.9	4.8	4.8	6.7	6.4	5.5	4.6	5.2	6.1	7.0	7.5	5.3	5.8	5.6	5.4	3.7	2.3	-1.9	1.9	10.4	10.2	5.6	8.0
FR	1.8	2.1	1.9	1.3	1.6	2.5	2.4	1.5	2.5	2.2	1.7	1.2	1.4	1.6	3.5	2.4	3.4	3.5	3.5	2.2	2.4	2.2	1.8	1.8	8.0	7.2	7.5	5.1
IE	4.7	2.0	2.2	4.0	3.2	2.6	5.5	:	3.5	4.2	4.6	:	:	:	:	:	5.5	2.8	:	:	5.2	2.8	-0.8	:	6.0	3.7	:	:
IT	1.2	0.8	-0.2	0.1	0.2	1.2	0.1	1.2	0.1	0.3	0.8	1.0	2.2	0.9	-3.2	-2.2	0.6	1.1	0.2	0.9	5.4	1.9	-1.3	0.4	3.3	2.9	0.2	3.1
CY	4.2	3.4	3.8	3.5	8.0	7.6	1.8	1.6	-3.9	-9.7	0.9	4.3	5.9	11.4	6.4	2.7	8.3	11.4	4.6	1.7	-3.7	-5.6	-0.7	2.8	3.9	10.0	0.8	-0.4
LV	8.5	8.0	8.7	10.8	:	:	:	:	:	:	:	:	:	:	:	:	10.2	9.4	8.4	:	10.8	12.3	18.6	:	13.5	13.9	15.4	:
LT	6.3	6.5	4.6	7.1	7.9	7.1	7.6	8.6	7.4	8.2	6.3	7.2	15.6	4.3	8.4	6.3	13.8	11.6	8.5	9.1	4.5	6.5	13.2	12.8	15.2	13.3	15.9	13.7
LU	:	:	:	:	:	:	:	:	:	:	:	:	:	:	:	:	:	:	:	:	:	:	:	:	:	:	:	:
HU	4.0	4.1	3.8	4.0	2.6	2.3	2.7	2.8	-1.9	-3.6	1.1	1.3	9.6	-0.5	7.1	10.4	1.1	0.3	0.6	-2.4	12.9	11.2	8.5	10.1	9.0	6.8	5.0	3.3
MT	0.8	-1.7	-1.3	2.3	:	:	:	:	:	:	:	:	:	:	:	:	3.0	11.4	7.3	2.5	-3.2	0.0	-11.8	-5.8	-0.6	13.6	-2.8	-4.7
NL	2.3	1.8	0.1	1.0	0.4	0.1	-1.3	0.1	-0.8	0.1	-0.1	-0.5	1.9	2.7	-1.6	2.6	0.9	0.7	-0.7	-0.1	10.0	12.2	5.7	5.4	8.8	11.8	5.1	4.4
AT	2.9	3.0	2.4	1.9	0.9	0.9	0.9	0.7	1.0	1.0	1.1	1.2	1.5	1.4	0.5	-0.8	1.1	1.5	1.3	1.0	9.6	7.2	4.6	2.9	6.4	4.6	2.6	1.3
PL	4.9	4.3	4.0	2.7	3.2	2.6	2.7	2.0	1.4	1.0	2.4	2.1	5.6	7.8	4.3	4.7	4.7	4.6	1.2	5.1	12.8	17.0	1.3	4.2	12.5	18.4	-6.2	10.8
PT	1.1	0.6	0.1	0.5	2.5	2.7	2.9	3.0	2.7	2.4	1.7	0.9	0.5	0.3	-1.6	-2.8	2.4	2.4	1.8	1.0	3.0	2.0	-0.9	-0.1	5.9	6.3	3.5	1.2
SI	4.4	3.2	2.8	4.7	3.4	3.3	3.0	4.0	2.3	2.3	2.7	2.8	6.0	4.8	2.7	3.3	4.0	2.5	1.5	-0.2	13.3	13.3	10.7	10.9	12.0	11.6	8.3	3.7
SK	5.5	5.6	5.3	5.2	4.4	5.2	4.5	4.5	3.8	-1.8	3.3	-2.4	4.2	3.3	6.8	9.3	9.7	7.8	6.2	6.8	5.2	9.6	7.1	4.8	9.6	12.2	8.1	6.4
FI	3.7	3.6	2.1	-0.3	2.5	2.6	3.0	3.4	1.6	1.4	1.2	1.4	4.1	4.4	-0.7	-2.8	3.6	1.6	2.2	-1.9	6.7	9.7	7.2	7.6	7.6	6.7	9.4	5.8
SE	3.4	2.7	2.2	2.1	1.3	2.0	1.2	2.5	-0.3	-0.2	-0.1	0.1	7.5	9.6	9.2	8.7	2.1	0.6	1.9	2.5	8.8	11.1	4.9	2.2	8.0	9.2	5.3	3.0
UK	3.0	2.5	1.7	1.5	3.6	3.9	2.7	1.6	2.0	0.5	0.9	1.5	7.2	4.1	3.3	2.2	3.8	3.2	2.8	1.3	6.0	5.6	2.6	5.8	7.7	6.8	5.4	4.5
EFTA																												
NO	1.8	2.6	1.7	2.0	3.5	4.4	1.9	4.5	2.3	2.4	2.0	1.6	7.8	26.6	8.0	17.0	5.4	8.9	5.0	5.6	1.8	-3.8	-3.3	-1.3	11.8	12.1	5.0	8.0
CH	2.4	1.5	1.3	1.0	1.2	0.8	1.0	1.4	0.5	0.2	0.3	0.9	4.5	1.1	0.2	3.2	3.1	1.4	2.5	:	6.2	3.9	-0.2	:	8.7	4.0	2.4	5.2
MAIN PARTNERS																												
US	3.8	3.8	3.6	3.6	3.5	3.8	3.5	3.9	2.3	1.9	1.7	1.5	7.8	8.3	8.1	7.2	4.6	4.6	4.3	3.5	9.0	6.1	6.7	7.7	11.8	10.6	9.4	5.7
JP	2.4	0.9	1.0	2.2	1.8	0.3	0.9	1.5	2.5	3.0	2.3	1.9	1.4	-1.5	-0.3	3.5	1.6	0.5	1.0	2.3	14.7	10.8	5.2	5.1	10.0	10.4	7.2	6.7

: Data not available.

T3

CONTRIBUTIONS OF EXPENDITURE COMPONENTS TO VARIATION IN GDP
EURO-ZONE, EU-25, EU-15, EU MEMBER STATES AND MAIN PARTNERS

t/t-1

GDP variation over previous quarter, seasonally adjusted, at constant prices (1995)

	GDP				Household and NPISH final consumption expenditure				Government final consumption expenditure				Gross fixed capital formation				Change in inventories ⁽¹⁾				Domestic demand				Exports				Imports				External balance					
					2004		2005		2004		2005		2004		2005		2004		2005		2004		2005		2004		2005		2004		2005		2004		2005			
	Q3	Q4	Q1	Q2	Q3	Q4	Q1	Q2	Q3	Q4	Q1	Q2	Q3	Q4	Q1	Q2	Q3	Q4	Q1	Q2	Q3	Q4	Q1	Q2	Q3	Q4	Q1	Q2	Q3	Q4	Q1	Q2	Q3	Q4	Q1	Q2		
	Q3	Q4	Q1	Q2	Q3	Q4	Q1	Q2	Q3	Q4	Q1	Q2	Q3	Q4	Q1	Q2	Q3	Q4	Q1	Q2	Q3	Q4	Q1	Q2	Q3	Q4	Q1	Q2	Q3	Q4	Q1	Q2	Q3	Q4	Q1	Q2		
EURO-ZONE	0.3	0.2	0.4	0.3	0.1	0.5	0.1	0.1	0.1	0.0	0.1	0.1	0.1	0.0	0.1	0.4	0.0	-0.1	0.2	0.7	0.5	0.0	0.4	0.5	0.2	-0.2	0.8	-0.9	-0.5	0.6	-0.9	-0.4	-0.3	0.3	-0.1			
EU-25	0.3	0.3	0.4	0.4	0.2	0.5	0.1	0.1	0.1	0.0	0.1	0.1	0.1	0.0	0.1	0.4	0.0	-0.1	0.0	0.7	0.5	0.0	0.4	0.5	0.3	-0.2	0.9	-0.9	-0.6	0.5	-0.9	-0.4	-0.3	0.4	0.0			
EU-15	0.3	0.2	0.4	0.3	0.2	0.5	0.1	0.1	0.1	0.0	0.1	0.1	0.1	0.0	0.1	0.4	0.0	-0.1	0.0	0.7	0.5	0.0	0.3	0.4	0.3	-0.2	0.9	-0.9	-0.6	0.6	-0.9	-0.4	-0.3	0.3	0.0			
EU MEMBER STATES																																						
BE	0.9	0.3	0.0	0.3	0.2	0.0	0.2	0.2	0.3	0.3	0.0	0.0	0.8	-0.5	0.6	0.7	0.4	-0.3	-0.5	0.5	1.7	-0.5	0.3	1.4	2.1	2.3	-2.4	-1.5	-2.9	-1.6	2.1	0.4	-0.9	0.7	-0.3	-1.1		
CZ	1.2	1.2	1.3	1.3	0.3	0.2	0.2	0.3	-0.2	-0.1	0.0	0.1	0.4	0.3	0.0	0.2	-0.4	-1.9	-0.1	0.1	0.3	-0.8	-2.7	1.7	2.2	0.2	2.3	0.8	-1.3	1.8	1.7	-1.3	1.0	2.0	4.0	-0.4		
DK	0.1	0.8	0.4	1.6	0.6	0.8	0.5	0.5	-0.1	0.1	0.1	0.2	0.6	0.3	-1.5	1.5	1.2	-0.6	0.2	-0.4	2.3	0.6	-0.7	1.9	-0.5	0.2	2.6	1.8	-1.6	0.0	-1.5	-2.1	-2.1	0.2	1.1	-0.3		
DE	-0.1	-0.1	0.8	0.0	0.0	0.4	-0.3	-0.2	0.1	-0.4	0.1	0.1	0.2	-0.1	-0.2	0.0	1.3	-0.7	:	:	0.9	-0.1	-0.5	0.3	-0.2	0.2	1.0	0.5	-0.8	-0.2	0.2	-0.8	-1.0	0.0	1.2	-0.3		
EE	3.4	0.6	2.8	2.8	0.4	1.3	0.7	:	0.6	0.7	0.0	:	:	:	:	:	:	:	:	:	-3.0	3.8	-2.0	1.2	5.3	-1.5	10.4	2.7	-1.1	1.8	5.6	1.1	6.4	-3.2	4.8	1.6		
EL	1.8	-0.1	2.4	-0.3	:	:	:	:	:	:	:	:	:	:	:	:	:	:	:	:	2.5	0.9	2.0	-3.9	1.5	-0.6	-1.9	1.6	-2.2	-0.4	2.3	2.0	-0.8	-1.0	0.4	3.6		
ES	0.7	0.9	0.9	0.9	0.9	1.0	0.4	0.6	0.2	0.0	0.4	0.3	0.4	0.9	0.3	0.4	0.0	-0.1	-0.3	0.4	1.5	1.8	0.8	1.6	0.4	-0.2	-0.6	0.9	-1.3	-0.6	0.7	-1.7	-0.8	-0.9	0.2	-0.8		
FR	0.1	0.7	0.4	0.1	-0.1	0.6	0.4	-0.1	0.0	0.1	0.0	0.1	0.0	0.2	0.3	0.0	0.8	-0.3	-0.1	0.3	0.7	0.7	0.6	0.2	0.1	0.3	-0.1	0.3	-0.6	-0.4	-0.2	-0.3	-0.6	-0.1	-0.3	-0.1		
IE	-0.4	2.4	0.3	1.6	0.6	0.5	2.1	:	0.1	0.1	0.2	:	:	:	:	:	:	:	:	:	1.2	1.2	:	:	-2.2	2.3	-2.9	:	0.6	-1.1	:	:	-1.6	1.2	:	:		
IT	0.4	-0.4	-0.5	0.7	0.0	0.3	0.0	0.4	0.0	0.1	0.0	0.1	-0.3	-0.3	-0.2	0.3	-0.3	0.9	0.1	-0.3	-0.6	1.0	0.0	0.5	1.3	-1.3	-1.3	1.5	-0.3	0.0	0.8	-1.3	1.0	-1.4	-0.5	0.2		
CY	0.8	0.7	1.3	0.7	0.6	-0.5	-0.7	1.7	-0.5	0.0	1.0	0.2	-0.1	1.4	-0.6	-0.3	-1.7	4.8	-4.8	1.2	-1.7	5.8	-5.1	2.8	0.3	-2.8	2.3	1.5	2.1	-2.3	4.1	-3.6	2.4	-5.1	6.4	-2.1		
LV	2.7	2.0	2.5	3.3	:	:	:	:	:	:	:	:	:	:	:	:	:	:	:	:	1.2	3.5	2.0	:	2.7	1.0	2.8	:	-1.2	-2.5	-2.4	:	1.5	-1.5	0.4	:		
LT	1.8	1.6	0.2	3.3	1.2	1.3	1.5	2.1	0.6	0.7	-0.3	0.2	1.8	-1.5	0.9	0.7	-1.0	0.9	1.8	0.9	2.5	1.4	3.9	3.9	1.8	2.7	1.6	2.0	-2.6	-2.6	-5.3	-2.6	-0.7	0.2	-3.6	-0.5		
LU	:	:	:	:	:	:	:	:	:	:	:	:	:	:	:	:	:	:	:	:	:	:	:	:	:	:	:	:	:	:	:	:	:	:	:	:	:	:
HU	0.8	1.1	0.9	1.2	0.4	0.3	0.5	0.5	-0.2	0.0	0.3	0.2	1.2	-1.3	3.3	-0.4	-2.2	-0.4	-4.0	-0.5	-0.8	-1.5	0.2	-0.3	1.1	2.9	1.8	3.9	0.6	-0.3	-1.1	-2.5	1.7	2.6	0.7	1.4		
MT	0.6	0.6	-1.2	2.3	:	:	:	:	:	:	:	:	:	:	:	:	:	:	:	:	1.6	4.1	-4.2	1.4	-1.3	2.6	-8.0	1.2	0.4	-6.2	11.0	-0.2	-1.0	-3.6	3.0	1.0		
NL	0.6	0.1	-0.8	1.2	0.2	-0.2	-0.2	0.2	-0.1	0.4	-0.4	0.0	0.1	0.3	-0.3	0.4	-0.1	-0.1	0.0	-0.3	0.1	0.5	-0.9	0.3	1.9	2.6	-3.2	2.8	-1.3	-3.0	3.4	-2.0	0.5	-0.4	0.1	0.9		
AT	0.9	0.4	0.1	0.4	0.1	0.1	0.1	0.1	0.1	0.1	0.1	0.1	0.2	0.1	-0.2	-0.2	:	:	:	:	0.7	0.4	-0.1	0.0	0.8	0.1	0.1	0.6	-0.6	0.0	0.1	-0.1	0.2	0.0	0.3	0.4		
PL	0.7	0.8	1.4	-0.2	0.4	0.3	0.5	0.1	0.0	0.0	0.2	0.1	0.4	0.5	-0.3	0.4	0.0	0.0	0.0	:	2.4	0.8	-1.9	3.6	2.0	3.2	-4.3	0.8	-3.6	-3.2	7.6	-4.7	-1.6	0.0	3.3	-3.9		
PT	-0.7	-0.2	0.3	1.0	0.3	0.6	0.3	0.9	0.1	0.1	0.0	0.0	-0.2	-0.4	-0.2	0.1	0.2	-0.1	0.0	-0.6	0.4	0.2	0.1	0.3	-0.8	-0.1	-0.1	0.9	-0.3	-0.3	0.3	-0.2	-1.1	-0.4	0.2	0.7		
SI	1.2	-0.4	1.2	2.6	0.5	0.5	0.4	0.8	0.2	0.1	-0.1	0.2	0.2	0.3	0.0	0.5	-0.5	-0.9	-0.2	-1.4	0.3	-0.4	-0.1	0.0	1.6	0.7	1.8	3.3	-0.7	-0.8	-0.6	-0.6	0.9	0.0	1.3	2.7		
SK	1.3	1.4	1.2	1.3	0.8	0.5	0.6	0.4	0.1	-0.1	0.0	-0.4	0.5	0.1	0.9	0.7	1.1	0.5	-0.3	0.8	5.6	-5.5	2.5	4.0	-2.6	7.6	-4.4	4.1	-1.7	-0.7	3.1	-6.8	-4.3	6.9	-1.3	-2.8		
FI	1.3	0.1	-0.1	-1.6	0.4	0.5	0.5	0.4	0.1	0.1	0.1	0.1	-0.1	0.1	-0.4	-0.1	-1.3	-0.8	-0.4	-0.7	-0.9	-0.3	-0.2	-0.4	2.6	1.0	1.2	-1.3	-0.4	-0.7	-1.1	0.1	2.2	0.4	0.1	-1.2		
SE	0.7	0.3	0.5	0.6	0.2	0.3	0.1	0.5	-0.1	0.0	0.0	0.0	0.4	0.4	0.3	0.4	0.7	-0.7	:	:	1.4	0.1	0.0	0.6	-0.1	1.3	-0.8	0.9	-0.6	-1.1	1.3	-0.8	-0.7	0.2	0.5	0.1		
UK	0.3	0.5	0.3	0.5	0.3	0.4	0.1	0.3	0.0	0.1	0.1	0.1	0.1	0.1	0.0	0.2	0.2	0.5	0.1	-2.2	0.6	0.9	0.2	-0.2	0.3	0.4	-0.2	1.4	-0.6	-0.7	0.3	-0.8	-0.3	-0.4	0.1	0.6		
EFTA																																						
NO	-0.8	1.1	0.3	1.3	0.5	0.7	-0.2	1.3	-0.1	0.1	0.2	0.1	1.1	2.2	-2.2	2.3	-1.7	-0.4	3.8	-3.3	0.9	2.7	-0.5	2.3	-0.4	-0.5	-0.4	0.7	-1.3	-1.1	1.2	0.7	-1.6	-1.6	0.9	-1.1		
CH	0.6	-0.1	0.2	0.3	0.1	0.1	0.5	0.3	-0.1	0.0	0.1	0.1	0.2	-0.3	0.0	0.8	0.6	-0.4	0.2	:	0.8	-0.6	0.7	:	0.5	0.2	-0.5	:	-0.7	0.4	0.0	:	-0.2	0.6	-0.5	:		
MAIN PARTNERS																																						
US	1.0	0.8	0.9	0.8	0.8	0.8	0.6	0.6	0.1	0.0	0.1	0.0	0.3	0.4	0.3	0.5	-0.2	0.0	0.1	-0.6	1.0	1.1	1.1	0.5	0.2	0.2	0.2	0.3	-0.2	-0.5	-0.3	0.0	-0.1	-0.3	-0.1	0.3		
JP	-0.1	0.1	1.4	0.8	0.0	-0.2	0.7	0.3	0.1	0.1	0.1	0.0	0.0	0.1	0.4	0.4	0.0	0.1	0.3	-0.2	0.0	0.1	1.5	0.6	0.1	0.2	0.0	0.4	-0.2	-0.2	-0.1	-0.1	-0.1	0.0	-0.1	0.3		

: Data not available.

⁽¹⁾ Change in inventories includes acquisitions less disposals of valuables.

T4 GDP AND EXPENDITURE COMPONENTS
EURO-ZONE, EU-25, EU-15, EU MEMBER STATES AND MAIN PARTNERS
levels Second quarter 2005, in millions of euro, seasonally adjusted, at current prices

	GDP	Household and NPISH final consumption expenditure	Government final consumption expenditure	Gross fixed capital formation	Change in inventories ⁽¹⁾	Domestic demand	Exports	Imports	External balance
EURO-ZONE	1 951 936.3	1 118 578.6	397 550.3	396 827.6	12 556.4	1 925 512.9	729 719.1	703 295.7	26 423.4
EU-25	2 652 249.6	1 545 279.9	552 847.7	521 063.8	14 428.8	2 633 620.3	976 362.8	957 733.6	18 629.3
EU-15	2 517 223.7	1 466 757.5	526 170.0	491 360.8	12 905.1	2 497 193.4	902 171.0	882 140.7	20 030.3
EU MEMBER STATES									
BE	72 492.2	39 632.4	16 666.3	14 160.8	963.0	71 422.6	62 233.7	61 164.1	1 069.6
CZ	23 908.3	11 706.3	5 388.1	6 541.9	246.0	23 517.1	17 048.1	16 656.9	391.2
DK	51 334.4	25 163.5	13 545.0	9 955.7	41.6	48 719.6	25 283.8	22 669.1	2 614.7
DE	557 990.0	329 630.0	103 980.0	94 490.0	1 690.0	529 790.0	220 050.0	191 850.0	28 200.0
EE	2 558.7	:	:	:	:	2 662.5	2 098.0	2 201.7	- 103.7
EL	44 163.0	:	:	:	:	46 510.0	9 125.0	11 472.0	- 2 347.0
ES	223 743.0	129 301.0	40 185.0	65 387.0	929.0	235 802.0	56 145.0	68 204.0	- 12 059.0
FR	420 959.2	236 847.9	101 329.6	81 964.9	4 286.8	424 429.2	109 155.5	112 625.5	- 3 470.0
IE	39 311.4	:	7 359.4	:	:	33 852.0	31 206.3	25 747.0	5 459.3
IT	344 851.9	208 624.6	66 141.3	67 281.3	2 531.5	344 578.7	94 397.6	94 124.4	273.2
CY	3 328.0	2 054.0	611.5	598.6	141.0	3 405.0	1 560.8	1 637.8	- 77.0
LV	3 109.7	:	:	:	:	:	:	:	:
LT	5 036.2	3 247.9	843.8	1 096.5	107.4	5 319.2	2 837.7	3 120.7	- 283.0
LU	:	:	:	:	:	:	:	:	:
HU	21 152.9	11 835.2	5 052.2	4 974.5	- 806.4	21 399.3	14 565.4	14 811.7	- 246.3
MT	1 126.4	:	:	:	:	1 196.8	772.9	843.3	- 70.4
NL	124 521.0	60 500.0	29 785.0	24 107.0	113.0	114 505.0	87 005.0	76 989.0	10 016.0
AT	61 341.8	33 875.8	10 872.2	12 455.0	432.9	58 652.0	31 210.8	28 521.1	2 689.8
PL	:	:	:	:	:	:	:	:	:
PT	36 191.5	23 653.3	7 624.2	7 758.3	152.5	39 188.3	10 371.3	13 368.1	- 2 996.8
SI	6 736.1	3 649.5	1 355.7	1 705.0	- 15.9	6 681.2	4 275.2	4 220.3	54.9
SK	9 087.8	5 203.5	1 756.7	2 301.3	248.8	9 784.9	6 836.2	7 533.4	- 697.1
FI	37 964.0	20 152.0	8 769.0	7 057.0	- 284.0	36 704.0	14 497.0	13 237.0	1 260.0
SE	:	:	:	:	:	:	:	:	:
UK	444 081.6	289 598.6	95 325.4	73 297.9	- 112.0	458 491.5	114 720.9	129 130.8	- 14 409.9
EFTA									
NO	57 517.2	24 387.0	12 069.1	10 718.2	1 363.2	48 537.7	25 459.4	16 479.9	8 979.5
CH	73 353.3	44 926.2	8 817.7	15 754.6	- 1 465.3	:	:	30 226.4	:
MAIN PARTNERS									
US	2 457 122.4	1 722 447.2	384 806.3	487 851.4	- 833.7	2 594 290.9	257 483.7	394 652.2	- 137 168.5
JP	942 874.4	532 978.1	166 391.6	227 204.1	4 111.1	930 684.9	127 889.9	115 700.4	12 189.5

: Data not available.

⁽¹⁾ Change in inventories includes acquisitions less disposals of valuables.

T5 GROSS CAPITAL FORMATION BY COMPONENT

EURO-ZONE, EU-25, EU-15, EU MEMBER STATES AND MAIN PARTNERS

t/t-1 Percentage change over previous quarter - seasonally adjusted - at constant prices (1995)

	Total gross capital formation ⁽¹⁾				Agriculture, forestry, fishing				Metal products and machinery				Transportation equipment				Housing				Other construction				Other products				Total gross fixed capital formation				Changes in inventories ⁽²⁾			
	2004		2005		2004		2005		2004		2005		2004		2005		2004		2005		2004		2005		2004		2005		2004		2005					
	Q3	Q4	Q1	Q2	Q3	Q4	Q1	Q2	Q3	Q4	Q1	Q2	Q3	Q4	Q1	Q2	Q3	Q4	Q1	Q2	Q3	Q4	Q1	Q2	Q3	Q4	Q1	Q2	Q3	Q4	Q1	Q2				
EURO-ZONE	2.3	0.4	-0.5	1.3	7.5	2.3	1.0	26.2	2.0	-1.1	1.7	0.8	0.2	2.0	-1.5	-3.4	-0.7	0.4	-1.1	1.3	-0.1	0.4	-0.9	1.1	0.5	2.1	0.0	0.0	0.5	0.3	-0.2	0.5	0.1	0.1	0.0	0.2
EU-25	2.4	0.3	-0.6	0.7	6.8	-7.1	14.4	6.6	1.8	-0.3	1.2	1.0	0.2	0.6	-0.8	-3.7	-0.6	0.5	-0.8	1.4	0.6	0.4	-0.3	1.3	0.2	2.7	-0.7	0.4	0.6	0.5	0.0	0.6	0.4	0.4	0.2	0.2
EU-15	2.4	0.4	-0.5	0.7	6.9	3.7	5.8	17.5	1.8	-0.4	1.2	1.0	0.1	1.0	-1.3	-3.1	-0.4	0.4	-0.9	1.0	0.3	0.2	-0.4	1.2	0.1	3.0	-0.8	0.6	0.5	0.5	-0.2	0.6	0.3	0.3	0.2	0.2
EU MEMBER STATES																																				
BE	6.7	-3.5	0.5	5.9	:	:	:	:	:	:	:	:	:	:	:	:	:	:	:	:	:	:	:	:	:	:	:	:	4.2	-2.5	3.3	3.4	0.8	0.5	0.0	0.5
CZ	0.1	-4.7	-0.3	0.9	:	:	:	:	:	:	:	:	:	:	:	:	:	:	:	:	:	:	:	:	:	:	:	:	1.3	0.8	-0.1	0.7	1.2	-0.7	-0.7	-0.6
DK	7.4	-2.2	-4.6	4.7	:	:	:	-13.8	7.4	13.4	-15.3	12.5	6.6	-13.8	-10.0	17.1	1.2	-1.2	1.4	-0.6	-0.6	-1.0	-1.3	2.0	-0.2	-0.3	-6.8	6.8	2.8	1.1	-6.7	7.3	1.2	0.6	0.8	0.4
DE	4.6	-1.1	-1.2	2.1	:	0.0	:	:	6.4	-4.1	3.5	:	-0.8	5.9	-3.1	:	-2.1	-0.2	-2.6	-0.8	-0.8	0.6	-4.2	0.7	0.8	1.5	-0.5	0.5	0.9	-0.4	-1.2	0.2	0.7	0.0	:	:
EE	-4.0	2.6	0.3	2.5	:	:	:	:	:	:	:	:	:	:	:	:	:	:	:	:	:	:	:	:	:	:	:	:	:	:	:	:	:	:	:	:
EL	2.8	3.4	0.5	-10.7	:	:	:	:	:	:	:	:	:	:	:	:	:	:	:	:	:	:	:	:	:	:	:	:	:	:	:	:	:	:	:	:
ES	1.6	3.3	1.1	1.5	0.0	0.8	-0.7	0.0	7.4	4.5	1.4	-1.9	9.5	0.6	-0.6	-1.4	-1.2	3.2	1.1	2.9	0.2	2.5	2.1	1.6	2.1	5.5	-1.2	2.1	1.7	3.3	0.9	1.4	1.2	1.1	0.8	1.2
FR	3.6	-0.2	0.8	1.2	0.0	0.1	0.2	0.2	-0.7	1.7	3.3	0.0	-0.5	3.2	1.8	-1.2	0.5	0.9	0.9	1.5	-0.4	0.2	1.3	0.1	0.2	1.7	0.3	-1.8	-0.2	1.2	1.5	-0.2	1.9	1.6	1.5	1.8
IE	-1.9	7.7	-3.1	:	:	:	:	:	:	:	:	:	:	:	:	:	:	:	:	:	:	:	:	:	:	:	:	:	:	:	:	:	:	:	:	:
IT	-2.9	3.1	-0.4	0.1	21.3	-2.3	-51.4	-31.3	-3.7	-2.2	-2.3	2.8	-5.3	-2.8	6.4	-6.1	1.0	-1.0	-0.8	2.9	1.1	-0.2	-2.1	3.4	-1.1	0.2	-0.3	-0.8	-1.5	-1.3	-0.8	1.5	-0.1	0.9	0.9	0.6
CY	-8.1	31.5	-20.7	4.6	-4.9	-36.4	-68.8	246.5	-3.7	24.3	-6.8	-6.0	2.4	-4.7	-12.8	-1.4	1.0	2.8	6.1	3.4	0.9	-1.0	-5.6	-2.2	-2.7	-0.6	4.7	-0.3	-0.4	7.7	-2.8	-1.5	1.3	6.0	1.2	2.4
LV	1.9	3.6	2.3	:	:	:	:	:	:	:	:	:	:	:	:	:	:	:	:	:	:	:	:	:	:	:	:	:	:	:	:	:	:	:	:	:
LT	1.1	-2.4	5.8	3.5	0.0	-0.1	0.8	-0.8	1.3	2.1	0.9	0.9	28.4	-32.8	16.5	-3.6	-2.8	3.0	-12.4	-0.5	5.6	-3.1	6.1	5.2	10.5	-4.5	3.1	4.6	5.7	-4.5	3.1	2.3	12.6	13.3	15.1	15.5
LU	:	:	:	:	:	:	:	:	:	:	:	:	:	:	:	:	:	:	:	:	:	:	:	:	:	:	:	:	:	:	:	:	:	:	:	:
HU	-3.6	-7.9	6.7	-10.0	:	:	:	:	:	:	:	:	:	:	:	:	:	:	:	:	:	:	:	:	:	:	:	:	4.4	-4.8	12.7	-1.4	-2.1	-2.5	-6.4	-6.9
MT	3.7	17.6	12.5	-10.2	:	:	:	:	:	:	:	:	:	:	:	:	:	:	:	:	:	:	:	:	:	:	:	:	:	:	:	:	:	:	:	:
NL	1.7	3.6	-3.1	-0.3	:	:	:	:	-1.7	-1.1	-3.5	1.0	3.1	5.8	-5.7	-8.8	0.9	2.0	1.1	5.8	-0.3	0.3	-1.4	2.3	0.2	1.4	3.8	-1.0	0.6	1.5	-1.3	1.8	0.4	0.4	0.3	0.0
AT	1.0	0.4	-0.3	-0.1	-3.8	-5.4	-7.3	-5.0	0.7	0.5	-0.4	0.1	-3.8	-4.0	-4.5	-2.8	-0.6	-1.2	-1.2	0.2	1.9	0.9	-0.3	-0.1	0.9	-1.3	-0.8	1.3	1.1	0.2	-1.2	-0.9	:	:	:	:
PL	3.1	2.6	-2.5	-1.4	:	:	:	:	:	:	:	:	:	:	:	:	:	:	:	:	:	:	:	:	:	:	:	:	1.9	2.3	-1.6	2.0	0.0	0.0	0.0	:
PT	-0.3	-1.8	-0.6	-1.8	0.3	0.5	1.1	0.7	0.5	1.1	-1.0	-0.4	-1.0	4.8	-8.5	2.2	:	:	:	:	:	:	:	:	-0.5	-3.1	0.0	1.9	-1.0	-1.5	-0.6	0.3	1.3	1.2	1.2	0.6
SI	-1.4	-2.0	-2.4	-1.5	:	:	:	:	:	:	:	:	:	:	:	:	:	:	:	:	:	:	:	:	:	:	:	:	0.8	0.8	0.1	1.5	2.5	1.6	1.4	0.0
SK	7.7	-1.5	4.3	5.1	0.4	-1.9	2.3	-4.9	3.4	1.3	2.5	3.0	2.6	1.0	1.6	2.3	-3.0	5.9	0.2	1.7	-1.6	3.0	-1.8	0.5	-1.6	-7.7	7.0	-7.8	2.2	0.6	3.5	2.8	2.7	3.1	2.8	3.5
FI	5.3	-6.0	12.2	-18.2	0.0	0.0	-6.3	6.7	-1.2	-1.3	-6.3	-8.2	-2.6	3.4	-5.6	9.8	-0.1	0.5	-1.2	0.3	0.3	0.8	0.4	0.9	0.3	0.0	0.5	0.3	-0.3	0.3	-2.0	-0.8	0.0	-0.8	-1.2	-2.0
SE	:	:	:	:	2.9	1.5	2.0	6.1	4.2	4.7	3.3	4.7	0.7	-6.9	13.2	-15.4	4.2	3.4	4.1	5.8	-0.7	0.3	-0.8	-1.3	1.9	2.2	-1.6	1.1	2.3	2.3	1.7	2.2	-1.0	-1.7	:	:
UK	0.8	1.5	0.1	-2.4	7.2	-0.6	-8.0	-14.0	0.2	1.7	0.3	1.6	-2.1	-4.6	2.0	-1.1	0.4	0.7	-1.3	-0.2	2.4	-1.0	1.7	1.1	-2.1	7.7	-4.8	3.4	0.5	0.8	0.0	1.0	1.7	2.2	2.2	0.1
EFTA																																				
NO	1.4	9.1	-1.8	3.5	:	:	:	:	5.2	-4.3	0.3	-0.9	58.0	38.3	-13.7	16.9	:	:	:	:	:	:	:	:	-24.7	60.3	42.3	0.0	5.3	10.5	-9.3	10.9	2.5	2.0	5.8	2.6
CH	4.7	:	:	:	:	:	:	:	:	:	:	:	:	:	:	:	:	:	:	:	:	:	:	:	:	:	:	:	0.8	-1.1	-0.1	3.7	-1.2	-1.7	-1.5	:
MAIN PARTNERS																																				
US	:	:	:	:	:	:	:	:	:	:	:	:	:	:	:	:	:	:	:	:	:	:	:	:	:	:	:	:	1.5	1.7	1.3	2.5	1.4	1.4	1.4	0.8
JP	-1.2	:	:	:	:	:	:	:	:	:	:	:	:	:	:	:	:	:	:	:	:	:	:	:	:	:	:	:	-0.1	0.3	1.6	1.6	0.1	0.2	0.5	0.3

⁽¹⁾ Total Gross Capital Formation is equal to Total Gross Fixed Capital Formation plus changes in inventories, plus acquisitions less disposals of valuables.

⁽²⁾ Percentage of GDP. It includes acquisitions less disposals of valuables.

: Data not available or not computable.

T6

GROSS CAPITAL FORMATION BY COMPONENT
EURO-ZONE, EU-25, EU-15, EU MEMBER STATES AND MAIN PARTNERS

t/t-4
Percentage change over the same quarter of the previous year – seasonally adjusted – at constant prices (1995)

	Total gross capital formation ⁽¹⁾				Agriculture, forestry, fishing				Metal products and machinery				Transportation equipment				Housing				Other construction				Other products				Total gross fixed capital formation			
	2004		2005		2004		2005		2004		2005		2004		2005		2004		2005		2004		2005		2004		2005		2004		2005	
	Q3	Q4	Q1	Q2	Q3	Q4	Q1	Q2	Q3	Q4	Q1	Q2	Q3	Q4	Q1	Q2	Q3	Q4	Q1	Q2	Q3	Q4	Q1	Q2	Q3	Q4	Q1	Q2	Q3	Q4	Q1	Q2
EURO-ZONE	6.9	3.3	3.4	3.4	20.8	41.1	13.9	40.3	3.1	0.3	2.7	3.3	5.4	8.7	3.9	-2.7	1.6	0.8	-1.4	-0.1	-2.5	-1.8	-2.0	0.4	2.4	2.7	2.7	2.6	1.5	1.1	0.7	1.1
EU-25	7.0	3.3	3.5	2.7	9.7	19.6	9.4	21.0	4.1	1.7	2.9	3.7	5.0	5.7	3.9	-3.7	2.4	1.7	-0.6	0.5	0.3	-0.3	0.4	2.0	2.8	4.2	2.5	2.5	2.7	1.9	1.5	1.7
EU-15	6.8	3.1	3.6	2.9	18.7	47.2	22.9	37.6	3.8	1.3	2.7	3.5	4.8	6.1	3.7	-3.3	2.4	1.7	-0.6	0.1	-0.4	-0.9	-0.3	1.3	2.9	4.4	2.8	2.9	2.5	1.7	1.3	1.5
EU MEMBER STATES																																
BE	8.5	0.9	2.1	9.5	:	:	:	:	:	:	:	:	:	:	:	:	:	:	:	:	:	:	:	:	:	:	:	:	4.1	3.1	3.1	8.7
CZ	8.1	0.8	-0.1	-4.1	:	:	:	:	:	:	:	:	:	:	:	:	:	:	:	:	:	:	:	:	:	:	:	:	7.6	7.0	3.4	2.8
DK	11.8	6.3	1.2	4.8	:	:	-32.6	:	10.4	26.2	8.0	16.0	11.4	-19.8	-1.5	-3.2	13.8	7.1	6.0	0.8	-4.1	-7.6	-6.1	-0.9	1.9	6.4	-3.4	-0.9	6.4	4.6	1.9	4.1
DE	9.8	0.6	1.2	4.4	0.0	0.0	:	:	6.8	-0.8	4.7	:	0.0	12.7	11.4	:	-4.4	-5.2	-6.2	-5.6	-5.4	-5.1	-6.7	-3.7	1.7	1.5	2.2	2.4	-0.7	-1.7	-1.0	-0.5
EE	7.4	8.5	7.9	1.2	:	:	:	:	:	:	:	:	:	:	:	:	:	:	:	:	:	:	:	:	:	:	:	:	:	:	:	:
EL	3.7	6.7	-1.0	-4.5	:	:	:	:	:	:	:	:	:	:	:	:	:	:	:	:	:	:	:	:	:	:	:	:	:	:	:	:
ES	5.0	5.9	6.9	7.6	0.0	0.0	0.0	0.0	6.1	10.6	11.0	11.7	8.1	5.0	8.2	8.0	6.2	4.6	5.9	6.0	4.4	5.9	6.2	6.6	3.6	6.0	7.3	8.7	5.2	6.1	7.0	7.5
FR	9.5	7.9	8.8	5.6	-0.2	-0.3	0.1	0.4	1.7	1.6	5.4	4.3	-1.0	5.5	6.2	3.3	3.3	3.7	4.3	3.8	-0.5	-0.9	1.1	1.1	2.7	1.4	2.9	0.3	1.4	1.6	3.5	2.4
IE	10.1	-3.4	11.0	:	:	:	:	:	:	:	:	:	:	:	:	:	:	:	:	:	:	:	:	:	:	:	:	:	:	:	:	:
IT	1.9	1.5	0.0	-0.2	:	:	11.4	-60.4	2.5	0.1	-7.5	-5.4	-6.7	-5.9	-1.7	-8.0	4.6	2.9	-0.3	2.1	5.0	3.9	-0.3	2.1	-0.4	0.1	-2.0	-1.9	2.2	0.9	-3.2	-2.2
CY	21.7	45.3	18.5	0.3	39.8	-81.7	-89.2	-34.5	12.2	33.7	16.8	4.9	21.6	10.0	-8.7	-16.0	-2.6	-0.2	9.1	13.9	6.8	5.4	-3.2	-7.7	-16.0	-14.4	-3.5	1.0	5.9	11.4	6.4	2.7
LV	18.4	16.0	12.8	:	:	:	:	:	:	:	:	:	:	:	:	:	:	:	:	:	:	:	:	:	:	:	:	:	:	:	:	:
LT	24.3	19.9	6.7	8.1	-0.8	-0.9	1.7	-0.1	20.6	16.6	11.2	5.3	85.3	21.6	30.2	-3.1	79.9	86.9	51.0	-12.8	-5.4	-15.2	-2.1	14.2	-5.6	-6.5	-8.4	13.8	15.6	4.3	8.4	6.3
LU	:	:	:	:	:	:	:	:	:	:	:	:	:	:	:	:	:	:	:	:	:	:	:	:	:	:	:	:	:	:	:	:
HU	1.7	1.0	-0.1	-14.7	:	:	:	:	:	:	:	:	:	:	:	:	:	:	:	:	:	:	:	:	:	:	:	:	9.6	-0.5	7.1	10.4
MT	13.1	51.8	81.5	23.2	:	:	:	:	:	:	:	:	:	:	:	:	:	:	:	:	:	:	:	:	:	:	:	:	:	:	:	:
NL	3.2	5.5	-2.3	1.9	:	:	:	:	3.8	-6.1	6.1	-5.4	7.7	6.8	-5.5	-6.3	4.0	8.7	-2.3	10.2	-6.5	-2.2	-5.9	0.9	7.7	11.1	3.7	4.4	1.9	2.7	-1.6	2.6
AT	1.9	2.3	1.8	1.1	-6.3	-12.1	-17.7	-19.9	2.9	1.4	0.5	0.9	-10.4	-15.2	-16.0	-14.2	-0.2	-1.9	-3.5	-2.8	2.1	3.5	3.6	2.5	9.4	5.9	1.9	0.1	1.5	1.4	0.5	-0.8
PL	15.0	15.5	4.7	1.8	:	:	:	:	:	:	:	:	:	:	:	:	:	:	:	:	:	:	:	:	:	:	:	:	5.6	7.8	4.3	4.7
PT	1.6	1.4	-1.3	-4.5	-2.6	-0.3	1.5	2.6	2.4	2.2	0.1	0.2	4.3	10.9	1.4	-2.9	:	:	:	:	:	:	:	:	0.2	0.4	-0.3	-1.6	0.5	0.3	-1.6	-2.8
SI	7.7	5.1	-0.9	-7.1	:	:	:	:	:	:	:	:	:	:	:	:	:	:	:	:	:	:	:	:	:	:	:	:	6.0	4.8	2.7	3.3
SK	18.2	20.0	16.2	16.4	-17.3	-17.2	-5.4	-4.2	13.9	12.1	11.1	10.6	8.1	6.0	6.5	7.7	-12.8	-3.7	1.5	4.6	-14.2	-2.6	-2.6	0.0	-6.5	-15.6	-5.1	-10.4	4.2	3.3	6.8	9.3
FI	11.1	9.6	11.7	-9.2	6.7	6.7	0.0	0.0	4.0	6.3	-2.8	-16.1	15.5	14.9	-11.3	4.4	5.7	3.8	0.1	-0.5	2.2	3.1	1.9	2.4	0.1	0.0	0.8	1.0	4.1	4.4	-0.7	-2.8
SE	:	:	:	:	0.0	0.0	3.0	13.0	8.7	14.2	15.7	18.0	20.2	3.2	15.2	-10.2	17.7	17.8	16.5	18.7	-1.5	0.9	-0.4	-2.5	7.6	9.6	4.8	3.6	7.5	9.6	9.2	8.7
UK	4.5	1.9	4.0	-0.1	35.5	30.4	8.7	-15.7	6.3	3.1	1.1	3.8	-0.7	-7.2	0.1	-5.8	6.8	6.8	2.6	-0.3	10.4	3.4	7.7	4.3	7.4	13.7	1.6	3.8	7.2	4.1	3.3	2.2
EFTA																																
NO	12.2	29.9	17.8	12.4	:	:	:	:	16.0	5.9	2.2	0.1	18.4	227.2	34.0	120.6	:	:	:	:	:	:	:	:	-42.5	104.4	86.0	71.6	7.8	26.6	8.0	17.0
CH	6.3	:	:	:	:	:	:	:	:	:	:	:	:	:	:	:	:	:	:	:	:	:	:	:	:	:	:	:	4.5	1.1	0.2	3.2
MAIN PARTNERS																																
US	:	:	:	:	:	:	:	:	:	:	:	:	:	:	:	:	:	:	:	:	:	:	:	:	:	:	:	:	7.8	8.3	8.1	7.2
JP	2.4	:	:	:	:	:	:	:	:	:	:	:	:	:	:	:	:	:	:	:	:	:	:	:	:	:	:	:	1.4	-1.5	-0.3	3.5

(1) Total Gross Capital Formation is equal to Total Gross Fixed Capital Formation plus changes in inventories, plus acquisitions less disposals of valuables.

: Data not available or not computable.

Further information:

Databases

[EUROSTAT Website/Economy and finance/National accounts \(including GDP\)/Quarterly national accounts/GDP and main components/GDP and main components - Current prices](#)

[EUROSTAT Website/Economy and finance/National accounts \(including GDP\)/Quarterly national accounts/GDP and main components/GDP and main components - Constant prices](#)

Journalists can contact the media support service:

Bech Building Office A4/017
L - 2920 Luxembourg

Tel. (352) 4301 33408
Fax (352) 4301 35349

E-mail: eurostat-mediasupport@cec.eu.int

European Statistical Data Support:

Eurostat set up with the members of the 'European statistical system' a network of support centres, which will exist in nearly all Member States as well as in some EFTA countries.

Their mission is to provide help and guidance to Internet users of European statistical data.

The complete details concerning this support network can be found on our Internet site:

www.europa.eu.int/comm/eurostat/

A list of worldwide sales outlets is available at the:
Office for Official Publications of the European Communities.

2, rue Mercier
L - 2985 Luxembourg

URL: <http://publications.eu.int>
E-mail: info-info-opoce@cec.eu.int
