

# Harmonized Indices of Consumer Prices

## August 2005

# Statistics in focus

## ECONOMY AND FINANCE

31/2005

### Prices

Author

Lene MEJER

## Contents

|   |   |
|---|---|
| Price Indices.....                            | 2 |
| Rates of Change.....                          | 4 |
| EEA Index Numbers<br>and Rates of Change..... | 6 |
| COICOP/HICP Main<br>categories.....           | 7 |

**Euro-zone\*** annual inflation, as measured by the Monetary Union Index of Consumer Prices (MUICP), was 2.2% in August 2005, unchanged compared to July 2005. A year earlier the rate was 2.3%.

**EU** annual inflation, as measured by the European Index of Consumer Prices (EICP)\*\*, was 2.2% in August 2005, up from 2.1% in July 2005. A year earlier the rate was 2.1%.

**EEA** annual inflation, as measured by the European Economic Area Index of Consumer Prices (EEAICP), was 2.2% in August 2005.

In August 2005, the highest annual inflation rates in EU Member States were recorded in **Latvia** (6.3%), **Luxembourg** (4.3%), **Estonia** (4.2%) and **Greece** (3.6%); the lowest rates were observed in **Finland** and **Sweden** (1.0% each), the **Czech Republic** (1.4%) and **Cyprus** (1.5%).

For the **USA\*\*\*** the annual inflation rate was 3.6% in August 2005, up from 3.2% in July 2005. For **Japan\*\*\*** no August data was available in time for publication.

The annual inflation rates for the **euro-zone**, the **EU** and the latest available rates for the **USA\*\*\*** and **Japan\*\*\*** are shown in the graph below.

Methodological notes can be accessed via the Eurostat internet site under Publications/Methods and nomenclatures/Harmonized Indices of Consumer Prices – [Short guide for users](#) (issue date: 17/05/2004).

\* The euro-zone comprises: Belgium, Germany, Greece, Spain, France, Ireland, Italy, Luxembourg, the Netherlands, Austria, Portugal and Finland.

\*\* The EICP (EICP='European Index of Consumer Prices' as defined in Council Regulation (EC) No 2494/95 of 23 October 1995) is the official EU aggregate. It covers 15 Member States until April 2004 and 25 Member States starting from May 2004. The ten new Member States are integrated into the EICP starting from May 2004 using a chain index formula.

\*\*\* For the USA and Japan the national CPIs are given, which are not strictly comparable with the HICPs.

Annual Rate of Change (%)

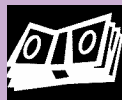
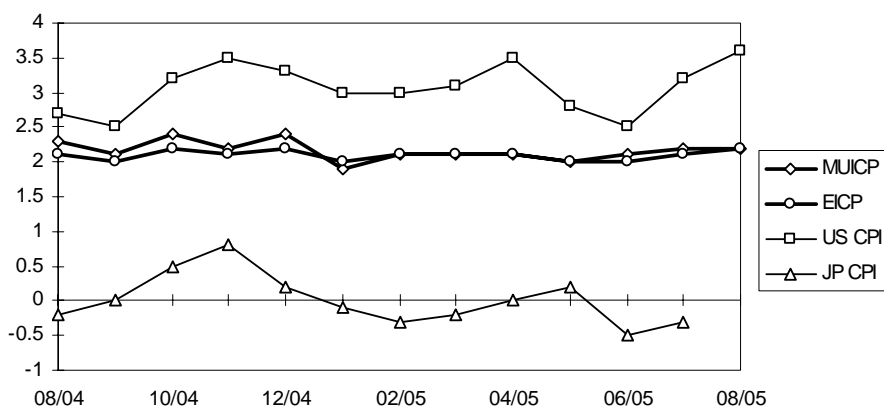


TABLE I  
HARMONIZED INDICES OF CONSUMER PRICES  
INDEX NUMBERS 1996 = 100

|                             | Euro-zone | EICP    | BE    | CZ    | DK    | DE    | EE    | EL    | ES    | FR    | IE    | IT    | CY     |
|-----------------------------|-----------|---------|-------|-------|-------|-------|-------|-------|-------|-------|-------|-------|--------|
| <b>Annual Average Index</b> |           |         |       |       |       |       |       |       |       |       |       |       |        |
| <b>2002</b>                 | 110.9     | 110.8   | 110.7 | 133.0 | 113.4 | 107.6 | 139.4 | 124.8 | 116.8 | 108.3 | 121.5 | 113.8 | 117.5  |
| <b>2003</b>                 | 113.2     | 113.0   | 112.3 | 132.9 | 115.6 | 108.8 | 141.4 | 129.0 | 120.5 | 110.7 | 126.3 | 117.0 | 122.2  |
| <b>2004</b>                 | 115.7     | 115.3   | 114.4 | 136.3 | 116.7 | 110.7 | 145.6 | 133.0 | 124.1 | 113.3 | 129.2 | 119.7 | 124.5  |
| <b>Monthly Index - 2003</b> |           |         |       |       |       |       |       |       |       |       |       |       |        |
| <b>Jan</b>                  | 111.9     | 111.7   | 110.0 | 132.6 | 114.5 | 108.2 | 141.1 | 126.4 | 118.5 | 109.3 | 123.9 | 115.2 | 119.5  |
| <b>Feb</b>                  | 112.4     | 112.2   | 112.3 | 132.8 | 115.3 | 108.8 | 141.5 | 126.1 | 118.7 | 110.1 | 125.1 | 114.7 | 119.7  |
| <b>Mar</b>                  | 113.1     | 112.8   | 112.6 | 132.8 | 116.2 | 109.0 | 141.8 | 129.3 | 119.6 | 110.6 | 126.0 | 116.1 | 122.4  |
| <b>Apr</b>                  | 113.2     | 113.0   | 112.4 | 133.0 | 116.2 | 108.7 | 141.6 | 129.6 | 120.6 | 110.4 | 126.6 | 117.0 | 123.3  |
| <b>May</b>                  | 113.1     | 112.9   | 112.0 | 133.0 | 115.9 | 108.4 | 141.3 | 130.2 | 120.5 | 110.3 | 126.4 | 117.2 | 123.0  |
| <b>Jun</b>                  | 113.2     | 112.9   | 112.4 | 133.1 | 115.9 | 108.6 | 140.8 | 130.0 | 120.6 | 110.5 | 126.5 | 117.3 | 122.4  |
| <b>Jul</b>                  | 113.1     | 112.8   | 111.1 | 133.0 | 115.2 | 108.9 | 141.0 | 127.3 | 119.9 | 110.4 | 126.0 | 117.2 | 120.2  |
| <b>Aug</b>                  | 113.3     | 113.1   | 113.0 | 132.9 | 115.1 | 109.0 | 141.0 | 127.3 | 120.5 | 110.7 | 126.8 | 116.8 | 120.9  |
| <b>Sep</b>                  | 113.7     | 113.5   | 113.2 | 132.4 | 116.0 | 108.8 | 141.4 | 129.9 | 120.8 | 111.2 | 127.0 | 117.7 | 123.4  |
| <b>Oct</b>                  | 113.8     | 113.6   | 112.8 | 132.6 | 115.7 | 108.7 | 141.7 | 130.4 | 121.6 | 111.4 | 127.0 | 118.1 | 124.4  |
| <b>Nov</b>                  | 113.9     | 113.6   | 113.0 | 133.0 | 115.9 | 108.5 | 141.6 | 130.6 | 122.0 | 111.5 | 127.0 | 118.4 | 124.2  |
| <b>Dec</b>                  | 114.2     | 113.9   | 113.0 | 133.2 | 115.7 | 109.5 | 141.4 | 131.4 | 122.2 | 111.6 | 127.5 | 118.4 | 122.9  |
| <b>Monthly Index - 2004</b> |           |         |       |       |       |       |       |       |       |       |       |       |        |
| <b>Jan</b>                  | 114.0     | 113.7   | 111.5 | 135.3 | 115.6 | 109.5 | 142.0 | 130.3 | 121.2 | 111.7 | 126.7 | 117.7 | 121.4  |
| <b>Feb</b>                  | 114.2     | 113.9   | 113.6 | 135.4 | 116.1 | 109.7 | 142.3 | 129.4 | 121.3 | 112.2 | 127.8 | 117.5 | 121.4  |
| <b>Mar</b>                  | 115.0     | 114.6   | 113.7 | 135.6 | 116.7 | 110.2 | 142.8 | 133.1 | 122.2 | 112.7 | 128.3 | 118.8 | 122.5  |
| <b>Apr</b>                  | 115.5     | 115.0   | 114.3 | 135.7 | 116.8 | 110.5 | 143.7 | 133.6 | 123.9 | 113.0 | 128.7 | 119.7 | 123.4  |
| <b>May</b>                  | 115.9     | 115.5   | 114.7 | 136.5 | 117.2 | 110.7 | 146.5 | 134.2 | 124.6 | 113.4 | 129.0 | 119.9 | 124.5  |
| <b>Jun</b>                  | 115.9     | 115.5   | 114.6 | 136.7 | 116.9 | 110.7 | 147.0 | 133.9 | 124.8 | 113.5 | 129.7 | 120.1 | 125.3  |
| <b>Jul</b>                  | 115.7     | 115.3   | 113.4 | 137.1 | 116.5 | 111.1 | 146.6 | 131.3 | 123.9 | 113.3 | 129.2 | 119.8 | 123.7  |
| <b>Aug</b>                  | 115.9     | 115.5   | 115.3 | 137.1 | 116.1 | 111.3 | 146.5 | 130.9 | 124.5 | 113.5 | 130.0 | 119.6 | 124.3  |
| <b>Sep</b>                  | 116.1     | 115.7   | 115.2 | 136.1 | 117.0 | 110.9 | 146.8 | 133.7 | 124.7 | 113.6 | 130.1 | 120.2 | 125.6  |
| <b>Oct</b>                  | 116.5     | 116.1   | 115.8 | 136.7 | 117.5 | 111.1 | 147.3 | 134.7 | 126.0 | 114.0 | 130.2 | 120.6 | 126.9  |
| <b>Nov</b>                  | 116.4     | 116.0   | 115.6 | 136.5 | 117.1 | 110.7 | 147.9 | 134.8 | 126.3 | 114.0 | 130.5 | 120.8 | 127.4  |
| <b>Dec</b>                  | 116.9     | 116.5   | 115.2 | 136.5 | 116.8 | 111.9 | 148.2 | 135.5 | 126.2 | 114.2 | 130.6 | 121.2 | 127.7  |
| <b>Monthly Index - 2005</b> |           |         |       |       |       |       |       |       |       |       |       |       |        |
| <b>Jan</b>                  | 116.2     | 115.9   | 113.7 | 137.3 | 116.5 | 111.3 | 147.9 | 135.8 | 125.0 | 113.5 | 129.3 | 120.0 | 124.8  |
| <b>Feb</b>                  | 116.6     | 116.3   | 116.2 | 137.3 | 117.3 | 111.7 | 148.8 | 133.5 | 125.3 | 114.3 | 130.4 | 119.9 | 124.3  |
| <b>Mar</b>                  | 117.4     | 117.0   | 116.9 | 137.2 | 118.2 | 112.1 | 149.7 | 136.9 | 126.4 | 115.1 | 130.7 | 121.3 | 125.4  |
| <b>Apr</b>                  | 117.9     | 117.5   | 117.1 | 137.6 | 118.8 | 112.1 | 150.4 | 138.0 | 128.2 | 115.3 | 131.5 | 122.3 | 126.8  |
| <b>May</b>                  | 118.2     | 117.8   | 117.3 | 137.7 | 118.7 | 112.5 | 150.7 | 138.5 | 128.4 | 115.3 | 131.8 | 122.7 | 127.1# |
| <b>Jun</b>                  | 118.3     | 117.9   | 117.7 | 138.5 | 118.9 | 112.7 | 151.7 | 138.2 | 128.8 | 115.5 | 132.2 | 122.7 | 127.2  |
| <b>Jul</b>                  | 118.2     | 117.8   | 116.5 | 139.0 | 118.7 | 113.2 | 152.3 | 136.4 | 128.0 | 115.3 | 132.1 | 122.4 | 125.3  |
| <b>Aug</b>                  | 118.5\$   | 118.1\$ | 118.6 | 139.0 | 118.8 | 113.4 | 152.7 | 135.6 | 128.6 | 115.8 | 132.7 | 122.2 | 126.2  |
| <b>Sep</b>                  |           |         |       |       |       |       |       |       |       |       |       |       |        |
| <b>Oct</b>                  |           |         |       |       |       |       |       |       |       |       |       |       |        |
| <b>Nov</b>                  |           |         |       |       |       |       |       |       |       |       |       |       |        |
| <b>Dec</b>                  |           |         |       |       |       |       |       |       |       |       |       |       |        |

\* estimated    \$ provisional    # revised    : not available

TABLE I  
**HARMONIZED INDICES OF CONSUMER PRICES**  
**1996 = 100**  
INDEX NUMBERS

| LV                          | LT    | LU    | HU    | MT    | NL      | AT      | PL    | PT    | SI    | SK    | FI    | SE    | UK    |             |
|-----------------------------|-------|-------|-------|-------|---------|---------|-------|-------|-------|-------|-------|-------|-------|-------------|
| <b>Annual Average Index</b> |       |       |       |       |         |         |       |       |       |       |       |       |       |             |
| 123.5                       | 118.1 | 112.1 | 187.8 | 119.5 | 118.2   | 108.8   | 162.8 | 118.4 | 157.7 | 155.5 | 112.0 | 109.7 | 108.3 | <b>2002</b> |
| 127.1                       | 116.9 | 115.0 | 196.6 | 121.8 | 120.8   | 110.2   | 164.0 | 122.3 | 166.7 | 168.6 | 113.5 | 112.3 | 109.8 | <b>2003</b> |
| 135.0                       | 118.2 | 118.7 | 209.9 | 125.1 | 122.5   | 112.3   | 169.9 | 125.3 | 172.8 | 181.0 | 113.7 | 113.4 | 111.2 | <b>2004</b> |
| <b>Monthly Index - 2003</b> |       |       |       |       |         |         |       |       |       |       |       |       |       |             |
| 125.4                       | 117.6 | 113.2 | 192.3 | 117.6 | 119.2   | 109.7   | 163.3 | 120.7 | 162.7 | 165.3 | 112.5 | 111.0 | 108.6 | <b>Jan</b>  |
| 125.8                       | 117.4 | 114.5 | 193.8 | 118.1 | 120.1   | 109.9   | 163.5 | 120.7 | 163.6 | 166.2 | 113.5 | 112.1 | 109.0 | <b>Feb</b>  |
| 126.5                       | 117.7 | 115.1 | 195.5 | 119.0 | 121.2   | 110.2   | 164.0 | 120.8 | 164.7 | 167.3 | 113.9 | 112.8 | 109.4 | <b>Mar</b>  |
| 126.9                       | 117.8 | 114.9 | 195.5 | 122.2 | 121.3   | 110.1   | 164.3 | 121.8 | 165.7 | 167.4 | 113.8 | 112.4 | 109.7 | <b>Apr</b>  |
| 127.2                       | 117.6 | 114.7 | 195.7 | 123.0 | 121.2   | 109.9   | 164.3 | 122.7 | 166.6 | 167.4 | 113.7 | 112.3 | 109.7 | <b>May</b>  |
| 128.0                       | 117.7 | 114.7 | 196.4 | 123.2 | 120.6   | 109.9   | 164.1 | 122.7 | 167.4 | 167.9 | 113.6 | 112.1 | 109.6 | <b>Jun</b>  |
| 127.6                       | 116.8 | 113.8 | 196.9 | 123.9 | 120.5   | 109.8   | 163.3 | 122.5 | 168.5 | 167.8 | 113.0 | 111.9 | 109.5 | <b>Jul</b>  |
| 126.2                       | 116.0 | 115.2 | 196.3 | 124.1 | 120.8   | 110.1   | 162.6 | 122.6 | 168.1 | 169.6 | 113.2 | 111.8 | 109.9 | <b>Aug</b>  |
| 126.8                       | 115.6 | 116.0 | 197.4 | 123.8 | 121.8   | 110.4   | 163.4 | 122.9 | 167.9 | 170.7 | 113.8 | 112.7 | 110.2 | <b>Sep</b>  |
| 127.9                       | 115.7 | 115.5 | 198.9 | 124.5 | 121.6   | 110.4   | 164.4 | 123.2 | 168.1 | 171.1 | 113.7 | 112.8 | 110.4 | <b>Oct</b>  |
| 128.6                       | 116.2 | 116.0 | 200.2 | 120.4 | 121.1   | 110.6   | 165.0 | 123.3 | 168.4 | 171.3 | 113.6 | 112.5 | 110.3 | <b>Nov</b>  |
| 128.7                       | 116.2 | 116.2 | 200.5 | 121.6 | 120.4   | 110.9   | 165.3 | 123.4 | 168.4 | 171.5 | 113.7 | 112.7 | 110.7 | <b>Dec</b>  |
| <b>Monthly Index - 2004</b> |       |       |       |       |         |         |       |       |       |       |       |       |       |             |
| 130.4                       | 116.2 | 115.8 | 205.1 | 120.9 | 121.0   | 111.0   | 166.2 | 123.4 | 169.2 | 178.9 | 113.4 | 112.4 | 110.1 | <b>Jan</b>  |
| 131.2                       | 116.0 | 117.3 | 207.4 | 121.0 | 121.7   | 111.5   | 166.4 | 123.2 | 169.5 | 180.1 | 113.9 | 112.3 | 110.4 | <b>Feb</b>  |
| 132.5                       | 116.6 | 117.4 | 208.5 | 121.5 | 122.7   | 111.9   | 167.0 | 123.5 | 170.5 | 180.5 | 113.4 | 113.3 | 110.6 | <b>Mar</b>  |
| 133.3                       | 117.0 | 118.0 | 209.1 | 126.6 | 123.1   | 111.8   | 168.1 | 124.7 | 171.6 | 180.5 | 113.4 | 113.6 | 111.0 | <b>Apr</b>  |
| 135.0                       | 118.8 | 118.6 | 211.0 | 126.8 | 123.3   | 112.2   | 170.0 | 125.7 | 173.1 | 181.1 | 113.6 | 114.0 | 111.4 | <b>May</b>  |
| 135.8                       | 118.9 | 119.1 | 211.1 | 127.2 | 122.4   | 112.4   | 171.2 | 127.2 | 173.9 | 181.5 | 113.5 | 113.4 | 111.3 | <b>Jun</b>  |
| 136.1                       | 118.9 | 118.1 | 211.1 | 127.8 | 122.0   | 112.1   | 171.0 | 126.1 | 174.8 | 181.7 | 113.2 | 113.2 | 111.0 | <b>Jul</b>  |
| 136.0                       | 118.5 | 119.4 | 210.4 | 127.2 | 122.2   | 112.5   | 170.5 | 125.6 | 174.3 | 181.4 | 113.5 | 113.1 | 111.3 | <b>Aug</b>  |
| 136.6                       | 119.1 | 119.6 | 210.6 | 127.8 | 123.2   | 112.4   | 171.0 | 125.5 | 173.6 | 181.7 | 114.0 | 114.0 | 111.4 | <b>Sep</b>  |
| 137.1                       | 119.3 | 120.2 | 211.6 | 127.8 | 123.4   | 113.0   | 172.0 | 126.1 | 173.8 | 181.9 | 114.4 | 114.4 | 111.7 | <b>Oct</b>  |
| 137.8                       | 119.6 | 120.6 | 211.7 | 122.7 | 122.9   | 113.2   | 172.5 | 126.5 | 174.8 | 181.6 | 113.8 | 113.7 | 111.9 | <b>Nov</b>  |
| 138.2                       | 119.5 | 120.3 | 211.6 | 123.9 | 121.9   | 113.7   | 172.5 | 126.6 | 174.0 | 181.4 | 113.8 | 113.7 | 112.5 | <b>Dec</b>  |
| <b>Monthly Index - 2005</b> |       |       |       |       |         |         |       |       |       |       |       |       |       |             |
| 139.1                       | 119.5 | 119.1 | 213.2 | 123.2 | 122.5   | 113.7   | 172.5 | 125.9 | 173.1 | 184.4 | 113.2 | 113.0 | 111.9 | <b>Jan</b>  |
| 140.4                       | 119.7 | 121.1 | 214.4 | 124.0 | 123.5   | 114.1   | 172.5 | 125.8 | 174.3 | 184.7 | 113.9 | 113.6 | 112.2 | <b>Feb</b>  |
| 141.2                       | 120.4 | 121.5 | 215.4 | 124.6 | 124.5   | 114.6   | 172.6 | 126.3 | 176.1 | 184.6 | 114.4 | 113.9 | 112.7 | <b>Mar</b>  |
| 142.7                       | 120.8 | 122.4 | 217.0 | 129.1 | 124.7   | 114.4   | 173.3 | 127.2 | 176.2 | 185.0 | 114.7 | 114.1 | 113.1 | <b>Apr</b>  |
| 143.8                       | 121.1 | 123.0 | 218.3 | 129.9 | 124.6   | 114.4   | 173.8 | 127.9 | 176.8 | 185.2 | 114.3 | 114.2 | 113.5 | <b>May</b>  |
| 144.7                       | 121.3 | 122.9 | 218.9 | 129.9 | 124.2   | 114.7   | 173.6 | 128.0 | 176.9 | 186.0 | 114.6 | 114.3 | 113.5 | <b>Jun</b>  |
| 144.7                       | 121.1 | 122.8 | 218.7 | 130.0 | 123.8   | 114.4   | 173.5 | 128.5 | 178.3 | 185.4 | 114.2 | 114.0 | 113.6 | <b>Jul</b>  |
| 144.5                       | 121.2 | 124.5 | 217.7 | 130.4 | 124.2\$ | 114.6\$ | 173.6 | 128.7 | 177.4 | 185.2 | 114.6 | 114.2 | 114.0 | <b>Aug</b>  |
|                             |       |       |       |       |         |         |       |       |       |       |       |       |       | <b>Sep</b>  |
|                             |       |       |       |       |         |         |       |       |       |       |       |       |       | <b>Oct</b>  |
|                             |       |       |       |       |         |         |       |       |       |       |       |       |       | <b>Nov</b>  |
|                             |       |       |       |       |         |         |       |       |       |       |       |       |       | <b>Dec</b>  |

\* estimated    \$ provisional    # revised    : not available

TABLE II  
**HARMONIZED INDICES OF CONSUMER PRICES**  
 RATES OF CHANGE (%)

|                                      | Euro-zone | EICP  | BE  | CZ   | DK  | DE  | EE  | EL  | ES  | FR  | IE  | IT  | CY   |
|--------------------------------------|-----------|-------|-----|------|-----|-----|-----|-----|-----|-----|-----|-----|------|
| <b>Annual Average Rate of Change</b> |           |       |     |      |     |     |     |     |     |     |     |     |      |
| 2002/12                              | 2.3       | 2.1   | 1.6 | 1.4  | 2.4 | 1.3 | 3.6 | 3.9 | 3.6 | 1.9 | 4.7 | 2.6 | 2.8  |
| 2003/12                              | 2.1       | 2.0   | 1.5 | -0.1 | 2.0 | 1.0 | 1.4 | 3.4 | 3.1 | 2.2 | 4.0 | 2.8 | 4.0  |
| 2004/12                              | 2.1       | 2.0   | 1.9 | 2.6  | 0.9 | 1.8 | 3.0 | 3.0 | 3.1 | 2.3 | 2.3 | 2.3 | 1.9  |
| 2005/8                               | 2.1\$     | 2.1\$ | 2.4 | 1.8  | 1.4 | 1.8 | 4.1 | 3.3 | 3.3 | 2.0 | 2.2 | 2.1 | 2.2  |
| <b>Annual Rate of Change - 2003</b>  |           |       |     |      |     |     |     |     |     |     |     |     |      |
| Jan                                  | 2.1       | 2.0   | 1.2 | -0.7 | 2.6 | 0.9 | 2.5 | 3.3 | 3.8 | 1.9 | 4.7 | 2.9 | 4.5  |
| Feb                                  | 2.4       | 2.3   | 1.6 | -0.6 | 2.9 | 1.2 | 2.2 | 4.2 | 3.8 | 2.5 | 5.1 | 2.6 | 4.8  |
| Mar                                  | 2.4       | 2.3   | 1.7 | -0.6 | 2.8 | 1.2 | 2.2 | 3.9 | 3.7 | 2.6 | 4.9 | 2.9 | 6.3  |
| Apr                                  | 2.1       | 2.0   | 1.4 | -0.4 | 2.5 | 1.0 | 1.1 | 3.3 | 3.2 | 1.9 | 4.6 | 3.0 | 5.6  |
| May                                  | 1.8       | 1.7   | 0.9 | -0.3 | 2.1 | 0.6 | 0.7 | 3.5 | 2.7 | 1.8 | 3.9 | 2.9 | 4.9  |
| Jun                                  | 1.9       | 1.8   | 1.5 | 0.0  | 2.0 | 0.9 | 0.4 | 3.6 | 2.8 | 1.9 | 3.8 | 2.9 | 3.7  |
| Jul                                  | 1.9       | 1.8   | 1.4 | -0.3 | 1.8 | 0.8 | 0.9 | 3.5 | 2.9 | 1.9 | 3.9 | 2.9 | 2.6  |
| Aug                                  | 2.1       | 2.0   | 1.6 | -0.2 | 1.5 | 1.1 | 1.4 | 3.3 | 3.1 | 2.0 | 3.9 | 2.7 | 2.4  |
| Sep                                  | 2.2       | 2.0   | 1.7 | 0.0  | 1.7 | 1.1 | 1.5 | 3.3 | 3.0 | 2.3 | 3.8 | 3.0 | 3.3  |
| Oct                                  | 2.0       | 1.9   | 1.4 | 0.5  | 1.1 | 1.1 | 1.2 | 3.2 | 2.7 | 2.3 | 3.3 | 2.8 | 3.7  |
| Nov                                  | 2.2       | 2.0   | 1.8 | 0.9  | 1.4 | 1.3 | 1.2 | 3.2 | 2.9 | 2.5 | 3.3 | 2.8 | 3.8  |
| Dec                                  | 2.0       | 1.8   | 1.7 | 1.0  | 1.2 | 1.1 | 1.2 | 3.1 | 2.7 | 2.4 | 2.9 | 2.5 | 2.2  |
| <b>Annual Rate of Change - 2004</b>  |           |       |     |      |     |     |     |     |     |     |     |     |      |
| Jan                                  | 1.9       | 1.8   | 1.4 | 2.0  | 1.0 | 1.2 | 0.6 | 3.1 | 2.3 | 2.2 | 2.3 | 2.2 | 1.6  |
| Feb                                  | 1.6       | 1.5   | 1.2 | 2.0  | 0.7 | 0.8 | 0.6 | 2.6 | 2.2 | 1.9 | 2.2 | 2.4 | 1.4  |
| Mar                                  | 1.7       | 1.5   | 1.0 | 2.1  | 0.4 | 1.1 | 0.7 | 2.9 | 2.2 | 1.9 | 1.8 | 2.3 | 0.1  |
| Apr                                  | 2.0       | 1.8   | 1.7 | 2.0  | 0.5 | 1.7 | 1.5 | 3.1 | 2.7 | 2.4 | 1.7 | 2.3 | 0.1  |
| May                                  | 2.5       | 2.3   | 2.4 | 2.6  | 1.1 | 2.1 | 3.7 | 3.1 | 3.4 | 2.8 | 2.1 | 2.3 | 1.2  |
| Jun                                  | 2.4       | 2.3   | 2.0 | 2.7  | 0.9 | 1.9 | 4.4 | 3.0 | 3.5 | 2.7 | 2.5 | 2.4 | 2.4  |
| Jul                                  | 2.3       | 2.2   | 2.1 | 3.1  | 1.1 | 2.0 | 4.0 | 3.1 | 3.3 | 2.6 | 2.5 | 2.2 | 2.9  |
| Aug                                  | 2.3       | 2.1   | 2.0 | 3.2  | 0.9 | 2.1 | 3.9 | 2.8 | 3.3 | 2.5 | 2.5 | 2.4 | 2.8  |
| Sep                                  | 2.1       | 2.0   | 1.8 | 2.8  | 0.9 | 1.9 | 3.8 | 2.9 | 3.2 | 2.2 | 2.4 | 2.1 | 1.8  |
| Oct                                  | 2.4       | 2.2   | 2.7 | 3.1  | 1.6 | 2.2 | 4.0 | 3.3 | 3.6 | 2.3 | 2.5 | 2.1 | 2.0  |
| Nov                                  | 2.2       | 2.1   | 2.3 | 2.6  | 1.0 | 2.0 | 4.4 | 3.2 | 3.5 | 2.2 | 2.8 | 2.0 | 2.6  |
| Dec                                  | 2.4       | 2.2   | 1.9 | 2.5  | 1.0 | 2.2 | 4.8 | 3.1 | 3.3 | 2.3 | 2.4 | 2.4 | 3.9  |
| <b>Annual Rate of Change - 2005</b>  |           |       |     |      |     |     |     |     |     |     |     |     |      |
| Jan                                  | 1.9       | 2.0   | 2.0 | 1.5  | 0.8 | 1.6 | 4.2 | 4.2 | 3.1 | 1.6 | 2.1 | 2.0 | 2.8  |
| Feb                                  | 2.1       | 2.1   | 2.3 | 1.4  | 1.0 | 1.8 | 4.6 | 3.2 | 3.3 | 1.9 | 2.0 | 2.0 | 2.4  |
| Mar                                  | 2.1       | 2.1   | 2.8 | 1.2  | 1.3 | 1.7 | 4.8 | 2.9 | 3.4 | 2.1 | 1.9 | 2.1 | 2.4  |
| Apr                                  | 2.1       | 2.1   | 2.4 | 1.4  | 1.7 | 1.4 | 4.7 | 3.3 | 3.5 | 2.0 | 2.2 | 2.2 | 2.8  |
| May                                  | 2.0       | 2.0   | 2.3 | 0.9  | 1.3 | 1.6 | 2.9 | 3.2 | 3.0 | 1.7 | 2.2 | 2.3 | 2.1# |
| Jun                                  | 2.1       | 2.0   | 2.7 | 1.3  | 1.7 | 1.8 | 3.2 | 3.2 | 3.2 | 1.8 | 1.9 | 2.2 | 1.5  |
| Jul                                  | 2.2       | 2.1   | 2.7 | 1.4  | 1.9 | 1.9 | 3.9 | 3.9 | 3.3 | 1.8 | 2.2 | 2.2 | 1.3  |
| Aug                                  | 2.2\$     | 2.2\$ | 2.9 | 1.4  | 2.3 | 1.9 | 4.2 | 3.6 | 3.3 | 2.0 | 2.1 | 2.2 | 1.5  |
| Sep                                  |           |       |     |      |     |     |     |     |     |     |     |     |      |
| Oct                                  |           |       |     |      |     |     |     |     |     |     |     |     |      |
| Nov                                  |           |       |     |      |     |     |     |     |     |     |     |     |      |
| Dec                                  |           |       |     |      |     |     |     |     |     |     |     |     |      |

\* estimated    \$ provisional    # revised    : not available

TABLE II  
HARMONIZED INDICES OF CONSUMER PRICES  
RATES OF CHANGE (%)

| LV                                   | LT   | LU  | HU  | MT  | NL    | AT    | PL  | PT  | SI  | SK  | FI   | SE  | UK  |         |
|--------------------------------------|------|-----|-----|-----|-------|-------|-----|-----|-----|-----|------|-----|-----|---------|
| <b>Annual Average Rate of Change</b> |      |     |     |     |       |       |     |     |     |     |      |     |     |         |
| 2.0                                  | 0.4  | 2.1 | 5.2 | 2.6 | 3.9   | 1.7   | 1.9 | 3.7 | 7.5 | 3.5 | 2.0  | 2.0 | 1.3 | 2002/12 |
| 2.9                                  | -1.1 | 2.5 | 4.7 | 1.9 | 2.2   | 1.3   | 0.7 | 3.3 | 5.7 | 8.5 | 1.3  | 2.3 | 1.4 | 2003/12 |
| 6.2                                  | 1.1  | 3.2 | 6.8 | 2.7 | 1.4   | 2.0   | 3.6 | 2.5 | 3.6 | 7.4 | 0.1  | 1.0 | 1.3 | 2004/12 |
| 6.9                                  | 2.7  | 3.6 | 4.4 | 2.3 | 1.4\$ | 2.2\$ | 3.2 | 2.1 | 2.7 | 3.6 | 0.5  | 0.8 | 1.8 | 2005/8  |
| <b>Annual Rate of Change - 2003</b>  |      |     |     |     |       |       |     |     |     |     |      |     |     |         |
| 1.5                                  | -1.8 | 3.3 | 4.8 | 0.8 | 2.7   | 1.7   | 0.4 | 4.0 | 6.7 | 7.1 | 1.4  | 2.6 | 1.4 | Jan     |
| 2.1                                  | -1.8 | 3.2 | 4.6 | 2.1 | 2.9   | 1.8   | 0.4 | 4.1 | 6.4 | 7.4 | 2.1  | 3.3 | 1.6 | Feb     |
| 2.2                                  | -1.0 | 3.7 | 4.8 | 2.4 | 2.8   | 1.8   | 0.4 | 3.8 | 6.3 | 8.1 | 1.9  | 2.9 | 1.6 | Mar     |
| 2.4                                  | -0.8 | 3.0 | 3.9 | 1.9 | 2.2   | 1.3   | 0.1 | 3.7 | 5.4 | 7.7 | 1.3  | 2.3 | 1.5 | Apr     |
| 2.5                                  | -0.8 | 2.3 | 3.5 | 1.9 | 2.3   | 0.9   | 0.3 | 3.7 | 5.6 | 7.7 | 1.1  | 2.0 | 1.2 | May     |
| 3.7                                  | -0.3 | 2.0 | 4.4 | 2.2 | 2.1   | 1.0   | 0.6 | 3.4 | 6.2 | 8.4 | 1.2  | 2.0 | 1.1 | Jun     |
| 3.7                                  | -0.8 | 1.9 | 4.7 | 1.7 | 2.1   | 1.0   | 0.7 | 2.9 | 6.1 | 8.5 | 1.0  | 2.4 | 1.3 | Jul     |
| 3.4                                  | -0.9 | 2.3 | 4.7 | 1.8 | 2.2   | 1.0   | 0.6 | 2.9 | 5.7 | 9.0 | 1.2  | 2.2 | 1.4 | Aug     |
| 3.2                                  | -0.8 | 2.7 | 4.6 | 1.7 | 2.0   | 1.4   | 0.7 | 3.2 | 5.1 | 9.3 | 1.2  | 2.3 | 1.4 | Sep     |
| 3.3                                  | -1.3 | 1.8 | 4.8 | 2.6 | 1.9   | 1.1   | 1.0 | 2.8 | 4.9 | 9.5 | 0.9  | 2.0 | 1.4 | Oct     |
| 3.7                                  | -0.9 | 2.0 | 5.6 | 1.8 | 2.0   | 1.3   | 1.5 | 2.3 | 5.3 | 9.5 | 1.2  | 2.0 | 1.3 | Nov     |
| 3.5                                  | -1.3 | 2.4 | 5.6 | 2.4 | 1.6   | 1.3   | 1.6 | 2.3 | 4.7 | 9.3 | 1.2  | 1.8 | 1.3 | Dec     |
| <b>Annual Rate of Change - 2004</b>  |      |     |     |     |       |       |     |     |     |     |      |     |     |         |
| 4.0                                  | -1.2 | 2.3 | 6.7 | 2.8 | 1.5   | 1.2   | 1.8 | 2.2 | 4.0 | 8.2 | 0.8  | 1.3 | 1.4 | Jan     |
| 4.3                                  | -1.2 | 2.4 | 7.0 | 2.5 | 1.3   | 1.5   | 1.8 | 2.1 | 3.6 | 8.4 | 0.4  | 0.2 | 1.3 | Feb     |
| 4.7                                  | -0.9 | 2.0 | 6.6 | 2.1 | 1.2   | 1.5   | 1.8 | 2.2 | 3.5 | 7.9 | -0.4 | 0.4 | 1.1 | Mar     |
| 5.0                                  | -0.7 | 2.7 | 7.0 | 3.6 | 1.5   | 1.5   | 2.3 | 2.4 | 3.6 | 7.8 | -0.4 | 1.1 | 1.2 | Apr     |
| 6.1                                  | 1.0  | 3.4 | 7.8 | 3.1 | 1.7   | 2.1   | 3.5 | 2.4 | 3.9 | 8.2 | -0.1 | 1.5 | 1.5 | May     |
| 6.1                                  | 1.0  | 3.8 | 7.5 | 3.2 | 1.5   | 2.3   | 4.3 | 3.7 | 3.9 | 8.1 | -0.1 | 1.2 | 1.6 | Jun     |
| 6.7                                  | 1.8  | 3.8 | 7.2 | 3.1 | 1.2   | 2.1   | 4.7 | 2.9 | 3.7 | 8.3 | 0.2  | 1.2 | 1.4 | Jul     |
| 7.8                                  | 2.2  | 3.6 | 7.2 | 2.5 | 1.2   | 2.2   | 4.9 | 2.4 | 3.7 | 7.0 | 0.3  | 1.2 | 1.3 | Aug     |
| 7.7                                  | 3.0  | 3.1 | 6.7 | 3.2 | 1.1   | 1.8   | 4.7 | 2.1 | 3.4 | 6.4 | 0.2  | 1.2 | 1.1 | Sep     |
| 7.2                                  | 3.1  | 4.1 | 6.4 | 2.7 | 1.5   | 2.4   | 4.6 | 2.4 | 3.4 | 6.3 | 0.6  | 1.4 | 1.2 | Oct     |
| 7.2                                  | 2.9  | 4.0 | 5.7 | 1.9 | 1.5   | 2.4   | 4.5 | 2.6 | 3.8 | 6.0 | 0.2  | 1.1 | 1.5 | Nov     |
| 7.4                                  | 2.8  | 3.5 | 5.5 | 1.9 | 1.2   | 2.5   | 4.4 | 2.6 | 3.3 | 5.8 | 0.1  | 0.9 | 1.6 | Dec     |
| <b>Annual Rate of Change - 2005</b>  |      |     |     |     |       |       |     |     |     |     |      |     |     |         |
| 6.7                                  | 2.8  | 2.8 | 3.9 | 1.9 | 1.2   | 2.4   | 3.8 | 2.0 | 2.3 | 3.1 | -0.2 | 0.5 | 1.6 | Jan     |
| 7.0                                  | 3.2  | 3.2 | 3.4 | 2.5 | 1.5   | 2.3   | 3.7 | 2.1 | 2.8 | 2.6 | 0.0  | 1.2 | 1.6 | Feb     |
| 6.6                                  | 3.3  | 3.5 | 3.3 | 2.6 | 1.5   | 2.4   | 3.4 | 2.3 | 3.3 | 2.3 | 0.9  | 0.5 | 1.9 | Mar     |
| 7.1                                  | 3.2  | 3.7 | 3.8 | 2.0 | 1.3   | 2.3   | 3.1 | 2.0 | 2.7 | 2.5 | 1.1  | 0.4 | 1.9 | Apr     |
| 6.5                                  | 1.9  | 3.7 | 3.5 | 2.4 | 1.1   | 2.0   | 2.2 | 1.8 | 2.1 | 2.3 | 0.6  | 0.2 | 1.9 | May     |
| 6.6                                  | 2.0  | 3.2 | 3.7 | 2.1 | 1.5   | 2.0   | 1.4 | 0.6 | 1.7 | 2.5 | 1.0  | 0.8 | 2.0 | Jun     |
| 6.3                                  | 1.9  | 4.0 | 3.6 | 1.7 | 1.5   | 2.1   | 1.5 | 1.9 | 2.0 | 2.0 | 0.9  | 0.7 | 2.3 | Jul     |
| 6.3                                  | 2.3  | 4.3 | 3.5 | 2.5 | 1.6\$ | 1.9\$ | 1.8 | 2.5 | 1.8 | 2.1 | 1.0  | 1.0 | 2.4 | Aug     |
|                                      |      |     |     |     |       |       |     |     |     |     |      |     |     | Sep     |
|                                      |      |     |     |     |       |       |     |     |     |     |      |     |     | Oct     |
|                                      |      |     |     |     |       |       |     |     |     |     |      |     |     | Nov     |
|                                      |      |     |     |     |       |       |     |     |     |     |      |     |     | Dec     |

\* estimated    \$ provisional    # revised    : not available

TABLE III  
HARMONIZED INDICES OF CONSUMER  
PRICES  
INDEX NUMBERS 1996 = 100

|                             | EEA     | IS    | NO    | CH**  |
|-----------------------------|---------|-------|-------|-------|
| <b>Annual Average Index</b> |         |       |       |       |
| 2002                        | 110.9   | 123.5 | 113.9 | 104.5 |
| 2003                        | 113.0   | 125.2 | 116.2 | 105.2 |
| 2004                        | 115.3   | 128.1 | 116.9 | 106.0 |
| <b>Monthly Index - 2003</b> |         |       |       |       |
| Jan                         | 111.8   | 124.3 | 117.6 | 104.9 |
| Feb                         | 112.3   | 124.0 | 117.9 | 105.1 |
| Mar                         | 112.9   | 125.4 | 117.2 | 105.5 |
| Apr                         | 113.0   | 125.3 | 116.4 | 105.7 |
| May                         | 112.9   | 125.2 | 115.8 | 105.5 |
| Jun                         | 113.0   | 125.3 | 115.5 | 105.5 |
| Jul                         | 112.9   | 125.0 | 115.1 | 104.7 |
| Aug                         | 113.1   | 124.5 | 115.3 | 104.9 |
| Sep                         | 113.5   | 125.4 | 115.8 | 105.1 |
| Oct                         | 113.6   | 125.8 | 115.8 | 105.6 |
| Nov                         | 113.7   | 126.0 | 115.8 | 105.5 |
| Dec                         | 114.0   | 126.3 | 115.8 | 105.5 |
| <b>Monthly Index - 2004</b> |         |       |       |       |
| Jan                         | 113.7   | 126.1 | 115.9 | 105.1 |
| Feb                         | 113.9   | 125.7 | 116.1 | 105.1 |
| Mar                         | 114.6   | 126.6 | 116.7 | 105.4 |
| Apr                         | 115.1   | 127.2 | 116.9 | 106.3 |
| May                         | 115.5   | 128.2 | 117.0 | 106.5 |
| Jun                         | 115.5   | 128.9 | 117.0 | 106.7 |
| Jul                         | 115.3   | 128.5 | 116.9 | 105.6 |
| Aug                         | 115.5   | 128.3 | 116.6 | 106.0 |
| Sep                         | 115.7   | 128.9 | 117.1 | 106.0 |
| Oct                         | 116.1   | 129.5 | 117.4 | 107.0 |
| Nov                         | 116.1   | 129.6 | 117.4 | 107.1 |
| Dec                         | 116.5   | 130.0 | 117.2 | 106.9 |
| <b>Monthly Index - 2005</b> |         |       |       |       |
| Jan                         | 115.9   | 129.5 | 117.0 | 106.4 |
| Feb                         | 116.3   | 129.3 | 117.1 | 106.6 |
| Mar                         | 117.0   | 129.8 | 117.7 | 106.9 |
| Apr                         | 117.5   | 129.2 | 118.3 | 107.8 |
| May                         | 117.8   | 128.8 | 118.7 | 107.7 |
| Jun                         | 117.9   | 129.3 | 118.9 | 107.4 |
| Jul                         | 117.8   | 129.1 | 118.5 | 106.8 |
| Aug                         | 118.1\$ | 128.8 | 118.7 | 107.0 |
| Sep                         |         |       |       |       |
| Oct                         |         |       |       |       |
| Nov                         |         |       |       |       |
| Dec                         |         |       |       |       |

TABLE IV  
HARMONIZED INDICES OF CONSUMER  
PRICES  
RATES OF CHANGE (%)

|                                      | EEA   | IS  | NO   | CH** |         |
|--------------------------------------|-------|-----|------|------|---------|
| <b>Annual Average Rate of Change</b> |       |     |      |      |         |
|                                      | 2.1   | 5.3 | 0.8  | 0.6  | 2002/12 |
|                                      | 2.0   | 1.4 | 2.0  | 0.6  | 2003/12 |
|                                      | 2.0   | 2.3 | 0.6  | 0.8  | 2004/12 |
|                                      | 2.1\$ | 1.9 | 1.3  | 1.2  | 2005/8  |
| <b>Annual Rate of Change - 2003</b>  |       |     |      |      |         |
|                                      | 2.0   | 1.1 | 4.2  | 0.8  | Jan     |
|                                      | 2.3   | 1.1 | 4.1  | 0.9  | Feb     |
|                                      | 2.3   | 1.9 | 3.2  | 1.3  | Mar     |
|                                      | 2.0   | 1.9 | 2.5  | 0.7  | Apr     |
|                                      | 1.7   | 1.8 | 1.8  | 0.4  | May     |
|                                      | 1.8   | 1.3 | 1.5  | 0.5  | Jun     |
|                                      | 1.8   | 0.9 | 1.2  | 0.3  | Jul     |
|                                      | 1.9   | 1.0 | 1.8  | 0.5  | Aug     |
|                                      | 2.0   | 1.2 | 1.5  | 0.5  | Sep     |
|                                      | 1.9   | 1.1 | 1.3  | 0.5  | Oct     |
|                                      | 2.0   | 1.5 | 1.0  | 0.5  | Nov     |
|                                      | 1.8   | 1.8 | 0.1  | 0.6  | Dec     |
| <b>Annual Rate of Change - 2004</b>  |       |     |      |      |         |
|                                      | 1.7   | 1.4 | -1.4 | 0.2  | Jan     |
|                                      | 1.5   | 1.4 | -1.5 | 0.1  | Feb     |
|                                      | 1.5   | 1.0 | -0.4 | -0.1 | Mar     |
|                                      | 1.8   | 1.5 | 0.4  | 0.5  | Apr     |
|                                      | 2.3   | 2.4 | 1.0  | 0.9  | May     |
|                                      | 2.3   | 2.9 | 1.3  | 1.1  | Jun     |
|                                      | 2.2   | 2.8 | 1.6  | 0.9  | Jul     |
|                                      | 2.1   | 3.1 | 1.1  | 1.0  | Aug     |
|                                      | 2.0   | 2.8 | 1.1  | 0.9  | Sep     |
|                                      | 2.2   | 2.9 | 1.4  | 1.3  | Oct     |
|                                      | 2.1   | 2.9 | 1.4  | 1.5  | Nov     |
|                                      | 2.2   | 2.9 | 1.2  | 1.3  | Dec     |
| <b>Annual Rate of Change - 2005</b>  |       |     |      |      |         |
|                                      | 2.0   | 2.7 | 0.9  | 1.2  | Jan     |
|                                      | 2.1   | 2.9 | 0.9  | 1.4  | Feb     |
|                                      | 2.1   | 2.5 | 0.9  | 1.4  | Mar     |
|                                      | 2.1   | 1.6 | 1.2  | 1.4  | Apr     |
|                                      | 2.0   | 0.5 | 1.5  | 1.1  | May     |
|                                      | 2.0   | 0.3 | 1.6  | 0.7  | Jun     |
|                                      | 2.1   | 0.5 | 1.4  | 1.2  | Jul     |
|                                      | 2.2\$ | 0.4 | 1.8  | 1.0  | Aug     |
|                                      |       |     |      |      | Sep     |
|                                      |       |     |      |      | Oct     |
|                                      |       |     |      |      | Nov     |
|                                      |       |     |      |      | Dec     |

\* estimated \$ provisional # revised : not available \*\* national CPI

TABLE V

## MAIN CATEGORIES OF HARMONIZED INDICES OF CONSUMER PRICES

August 2005 / August 2004

ANNUAL RATES OF CHANGE (%)

|                  | 00.   | 01.    | 02.   | 03.    | 04.   | 05.    | 06.   | 07.   | 08.     | 09.    | 10.   | 11.   | 12.   |
|------------------|-------|--------|-------|--------|-------|--------|-------|-------|---------|--------|-------|-------|-------|
| <b>Euro-zone</b> | 2.2\$ | 0.7\$  | 4.3\$ | -0.8\$ | 5.1\$ | 0.5\$  | 1.8\$ | 4.8\$ | -2.1\$  | -0.1\$ | 3.3\$ | 2.5\$ | 1.6\$ |
| <b>EICP</b>      | 2.2\$ | 0.9\$  | 3.4\$ | -1.4\$ | 5.1\$ | 0.5\$  | 2.2\$ | 5.0\$ | -1.9\$  | -0.6\$ | 4.0\$ | 2.8\$ | 2.3\$ |
| <b>BE</b>        | 2.9   | 2.3    | 1.8   | 0.5    | 6.4   | 0.9    | 2.4   | 6.7   | -0.2    | -0.5   | 2.3   | 2.4   | 2.0   |
| <b>CZ</b>        | 1.4   | -0.5   | -0.1  | -5.9   | 4.8   | -2.0   | 6.3   | 2.8   | 7.7     | 0.3    | 3.3   | 2.8   | 0.9   |
| <b>DK</b>        | 2.3   | 1.7    | 1.8   | 2.0    | 4.0   | 0.9    | 4.4   | 4.0   | -1.6    | -0.9   | 2.8   | 2.2   | 2.2   |
| <b>DE</b>        | 1.9   | 0.5    | 6.7   | -3.3   | 4.3   | -0.3   | 0.9   | 3.7   | -0.8    | 0.1    | 2.2   | 1.1   | 0.9   |
| <b>EE</b>        | 4.2   | 2.6    | 4.7   | 2.9    | 8.6   | 0.6    | 2.6   | 10.5  | -4.5    | 1.1    | 4.5   | 2.0   | 2.9   |
| <b>EL</b>        | 3.6   | 1.5    | 3.4   | 3.6    | 9.6   | 1.7    | 4.5   | 5.2   | -0.3    | 1.5    | 4.2   | 2.8   | 3.1   |
| <b>ES</b>        | 3.3   | 2.6    | 4.0   | 0.9    | 5.9   | 2.1    | 0.8   | 7.0   | -1.8    | -0.5   | 4.2   | 4.2   | 2.7   |
| <b>FR</b>        | 2.0   | 0.4    | 0.1   | -0.2   | 5.0   | 0.6    | 2.2   | 4.8   | -0.2    | -1.4   | 2.3   | 2.9   | 1.5   |
| <b>IE</b>        | 2.1   | -0.8   | 0.9   | -2.7   | 9.9   | -1.6   | 6.7   | 3.6   | -0.6    | -0.8   | 6.8   | 3.2   | 1.3   |
| <b>IT</b>        | 2.2   | -0.1   | 7.5   | 0.6    | 5.6   | 1.2    | 1.8   | 4.6   | -3.9    | 1.6    | 3.4   | 2.2   | 2.1   |
| <b>CY</b>        | 1.5   | 2.1    | -1.5  | -4.4   | 9.8   | 1.7    | -1.0  | 2.7   | -9.7    | -1.0   | 5.6   | 2.3   | 2.3   |
| <b>LV</b>        | 6.3   | 7.0    | 5.2   | 0.3    | 5.4   | 3.5    | 10.5  | 14.4  | -3.3    | 1.8    | 9.0   | 10.9  | 5.6   |
| <b>LT</b>        | 2.3   | 1.9    | 0.1   | -1.4   | 5.2   | -1.9   | 8.0   | 9.4   | -1.5    | 0.9    | -0.4  | 2.0   | -1.8  |
| <b>LU</b>        | 4.3   | 2.0    | 6.5   | 0.7    | 6.9   | 1.7    | 1.2   | 8.2   | -5.1    | 1.6    | 0.2   | 3.9   | 1.6   |
| <b>HU</b>        | 3.5   | 1.3    | 1.9   | 0.4    | 6.8   | -0.5   | 12.8  | 6.4   | -0.1    | 1.3    | 8.9   | 5.3   | 2.6   |
| <b>MT</b>        | 2.5   | -0.3   | 1.8   | -1.3   | 7.9   | 3.0    | 4.5   | 2.5   | 3.8     | 2.7    | 2.0   | 2.9   | 3.2   |
| <b>NL</b>        | 1.6\$ | -0.3\$ | 1.4\$ | -5.1\$ | 5.8\$ | -0.3\$ | 1.8\$ | 5.3\$ | -4.7\$  | -0.5\$ | 2.6\$ | 1.7\$ | 2.5\$ |
| <b>AT</b>        | 1.9\$ | 0.4\$  | 6.5\$ | -3.1\$ | 5.3\$ | -0.4\$ | 4.9\$ | 5.0\$ | -10.9\$ | -1.2\$ | 2.5\$ | 2.3\$ | 2.4\$ |
| <b>PL</b>        | 1.8   | 0.5    | 2.7   | -5.6   | 3.1   | 0.6    | 2.6   | 6.5   | 0.0     | -0.8   | 3.5   | 3.2   | 0.8   |
| <b>PT</b>        | 2.5   | -0.7   | 4.6   | -0.5   | 4.6   | 1.0    | 1.0   | 7.0   | -0.6    | 1.3    | 6.8   | 2.2   | 2.0   |
| <b>SI</b>        | 1.8   | -1.5   | 4.9   | -4.0   | 9.9   | 3.3    | -1.8  | 3.0   | -1.1    | -3.4   | 6.6   | 4.3   | 2.1   |
| <b>SK</b>        | 2.1   | -1.6   | -1.2  | -1.2   | 6.2   | -2.9   | 6.3   | 0.8   | -2.6    | 2.6    | 31.9  | 5.4   | 3.2   |
| <b>FI</b>        | 1.0   | -0.2   | 1.0   | -1.2   | 3.0   | 1.1    | 1.8   | 3.3   | -10.8   | -1.4   | 4.5   | 2.5   | 1.3   |
| <b>SE</b>        | 1.0   | -1.3   | 0.8   | 1.4    | 2.4   | -1.2   | 1.4   | 5.9   | -5.4    | -2.2   | 3.1   | 1.7   | 1.5   |
| <b>UK</b>        | 2.4   | 2.3    | 1.8   | -4.4   | 6.3   | 0.1    | 3.7   | 5.4   | -2.0    | -1.9   | 5.0   | 3.6   | 5.1   |
| <b>EEA</b>       | 2.2\$ | 0.9\$  | 3.4\$ | -1.4\$ | 5.1\$ | 0.5\$  | 2.3\$ | 5.0\$ | -1.9\$  | -0.6\$ | 4.0\$ | 2.8\$ | 2.3\$ |
| <b>IS</b>        | 0.4   | -4.7   | 3.3   | -4.3   | 5.0   | -1.6   | 2.8   | 1.2   | 4.9     | 0.5    | 8.7   | 1.0   | 2.4   |
| <b>NO</b>        | 1.8   | 1.6    | 2.4   | -1.6   | 1.7   | 0.0    | 3.2   | 4.6   | 0.3     | 0.8    | 0.8   | 1.3   | 1.9   |

\* estimated    \$ provisional    # revised    : not available

**COICOP/HICP Code**

- |            |   |            |                                  |
|------------|---|------------|----------------------------------|
| <b>00.</b> | HICP (all-items index)  | <b>06.</b> | Health                           |
| <b>01.</b> | Food and non-alcoholic beverages                                      | <b>07.</b> | Transports                       |
| <b>02.</b> | Alcoholic beverages and tobacco                                       | <b>08.</b> | Communications                   |
| <b>03.</b> | Clothing and footwear   | <b>09.</b> | Recreation and culture           |
| <b>04.</b> | Housing, water, electricity, gas and other fuels                      | <b>10.</b> | Education                        |
| <b>05.</b> | Furnishings, household equipment and routine maintenance of the house | <b>11.</b> | Restaurants and hotels           |
|            |   | <b>12.</b> | Miscellaneous goods and services |

# ***Further information:***

## **Databases**

[EUROSTAT Website/Economy and finance/Prices/Harmonized indices of consumer prices/Harmonized indices of consumer prices - Monthly data \(index\)](#)

---

### **Journalists can contact the media support service:**

Bech Building Office A4/017  
L - 2920 Luxembourg

Tel. (352) 4301 33408  
Fax (352) 4301 35349

E-mail: [eurostat-mediasupport@cec.eu.int](mailto:eurostat-mediasupport@cec.eu.int)

### **European Statistical Data Support:**

Eurostat set up with the members of the 'European statistical system' a network of support centres, which will exist in nearly all Member States as well as in some EFTA countries.

Their mission is to provide help and guidance to Internet users of European statistical data.

Contact details for this support network can be found on our Internet site: [www.europa.eu.int/comm/eurostat/](http://www.europa.eu.int/comm/eurostat/)

---

A list of worldwide sales outlets is available at the:

### **Office for Official Publications of the European Communities.**

2, rue Mercier  
L - 2985 Luxembourg

URL: <http://publications.eu.int>  
E-mail: [info-info-opoce@cec.eu.int](mailto:info-info-opoce@cec.eu.int)

---