

2003 cereal harvest: Production down more than 10%

Pierre Bruyas

Exceptional climatic conditions seriously disrupted the 2003 cereal harvest. Spring frosts were followed by high temperatures, which had a negative impact on yields in the South of Europe, leading to the lowest cereal production figures recorded since 1996.

Cereal production: -10,7%

In the 2002-2003 marketing year, cereal production (excluding rice) in the European Union did not exceed 188.8 million tonnes, a decline of 10.7% on the previous year and the lowest level recorded since 1995.

- In France and Portugal the drop exceeded 20%.
- German, Italy, Belgium, United Kingdom and Austria occupied the middle ground, with a drop of 5% to 10%.
- Sweden, Finland, Greece, Spain, and Luxembourg recorded declines of 5% or less, or production remained stable.
- A sharp rise in production was recorded in Denmark, Ireland and the Netherlands (+3.4%, +8.6% and +10.7%).

The decline in production was the result of a reduction in both areas and yields. At 36.3 million hectares, areas under cultivation were also at their lowest level since 1996 (-3.0% compared to 2001-2002).

Cereal production (1000 tonnes excl. rice)								
	1997	1998	1999	2000	2001	2002	2003	Trend 2003-2002
BE	2393.8	2535.9	2406.6	2512.9	2358.5	2639.3	2487.5	-5.8%
DK	9530.0	9355.5	8775.0	9412.7	9423.1	8803.7	9104.0	3.4%
DE	45485.7	44574.9	44452.0	45271.2	49709.3	43391.3	39509.8	-8.9%
EL	4755.0	4419.0	4288.0	4062.0	4091.3	4074.9	4110.0	0.9%
ES	18562.5	21778.5	17321.0	23739.8	17226.1	20831.0	20551.3	-1.3%
FR	62886.9	67807.7	64135.9	65582.5	60143.1	69555.7	54578.0	-21.5%
IE	1943.4	1865.0	2011.3	2173.9	2165.1	1963.6	2133.0	8.6%
IT	18455.1	19305.0	19641.5	19392.5	18660.3	19868.1	18159.1	-8.6%
LU	162.0	167.2	153.8	152.8	144.3	168.8	161.5	-4.3%
NL	1622.7	1569.3	1416.5	1818.8	1735.1	1707.6	1889.7	10.7%
AT	5008.7	4771.6	4806.5	4490.2	4833.8	4757.3	4263.8	-10.4%
PT	1345.5	1236.6	1503.6	1465.5	1151.9	1350.8	1040.0	-23.0%
FI	3798.7	2768.6	2868.4	4089.3	3661.0	3928.7	3783.0	-3.7%
SE	5986.0	5618.4	4931.3	5670.3	5390.7	5461.9	5343.2	-2.2%
UK	23533.0	22616.0	22119.0	23985.0	18959.4	22965.4	21644.8	-5.8%
EU-15	205469.0	210389.1	200830.4	213819.5	199653.0	211468.0	188758.7	-10.7%

Common wheat production : -12,4%

In the 2002-2003 marketing year, common wheat production did not exceed 82.6 million tonnes, a decline of 12.4% on the previous year and the lowest level recorded since 1996.

- Finland, the Netherlands, Denmark and Sweden recorded substantial increases.
- Production in Belgium remained stable.
- There was a particularly sharp decline in Portugal (-51%) ;

Common wheat production (1000 tonnes)								
	1997	1998	1999	2000	2001	2002	2003	Trend 2003-2002
BE	1661.0	1771.8	1528.5	1687.6	1457.4	1675.0	1671.9	-0.2%
DK	4965.0	4928.0	4471.0	4693.4	4663.9	4056.2	4709.3	16.1%
DE	19793.2	20127.5	19550.7	21578.1	22814.0	20792.0	19260.1	-7.4%
EL	620.0	595.0	621.0	408.0	401.2	381.0	322.7	-15.3%
ES	3523.4	4071.5	4555.0	5354.4	3108.2	4709.7	4041.3	-14.2%
FR	32983.0	38245.1	35394.6	35668.4	30188.7	37319.7	29282.0	-21.5%
IE	724.0	673.0	597.4	737.4	769.2	867.2	829.0	-4.4%
IT	3000.9	3447.7	3228.3	3117.3	2789.3	3277.3	2718.4	-17.1%
LU	57.4	60.1	46.4	61.2	54.0	71.7	67.8	-5.4%
NL	1062.6	1072.0	851.4	1142.7	990.7	1056.6	1228.3	16.2%
AT	1301.9	1275.7	1317.8	1269.3	1462.2	1384.8	1127.6	-18.6%
PT	297.0	123.1	237.0	182.2	50.9	85.8	42.1	-51.0%
FI	464.1	396.9	254.1	538.3	488.9	569.0	679.0	19.3%
SE	2056.2	2248.7	1658.9	2399.9	2344.8	2112.6	2285.1	8.2%
UK	15012.0	15417.0	14860.0	16694.0	11574.0	15954.3	14313.0	-10.3%
EU-15	87522	94453	89172	95532	83157	94313	82578	-12.4%

Statistics in focus

AGRICULTURE AND FISHERIES

THEME 5 – 9/2004

Contents

Cereal production:	
-10,7%.....	1
Common wheat production :	
-12,4%.....	1
Barley production:	
-2,7%.....	2
Grain maize production:.....	
-15,7%.....	2
Durum wheat production:	
-4,5%.....	2



- Another group of countries (Spain, France, Italy, Austria, Greece) saw a drop in production ranging from 15% to 20%.

- Lastly, in Germany, Ireland and Luxembourg production fell by 5% and 7% respectively.

The fall in production followed a decline in areas and yields. Areas under common wheat did not exceed 13.4 million hectares, i.e. a drop of 4.8% on 2002.

- Only Denmark, Finland and Sweden showed an increase in areas (of about 10% to 20%).

- Areas were stable or slightly down in Belgium, Germany and the Netherlands.

- In all other countries areas were down, with Portugal recording the greatest reduction, at -29%.

The average yield in the Union was about 61.7q/ha, down 8.1% on the previous year.

Barley production: -2.7%.

In the 2002-2003 marketing year, barley production was 46.7 million tonnes. Despite the fact that the reduction was slight (-2.7%), the figure for this marketing year was the lowest recorded since 1996.

This was due to a drop in yields of about 3%. Areas under barley remained stable at their 2001-2002 levels, breaking with the long-term downward trend.

This stability is due in part to an increase in areas under spring barley following the repeat sowings necessitated by the winter frosts. As a result areas under barley remained stable, whereas they had been moving downward since 1996.

Situations differ substantially in the various Member States:

- Spain, Ireland, Luxembourg, Austria and the United Kingdom recorded sharp rises in production (from 2.4% to 19.1%).

- Belgium and Portugal recorded the sharpest falls in production (-26.9% and -42.5% respectively).

- France and Sweden recorded falls in excess of 10%.

- In all the other states the drop in production was between 2% and 9%.

Grain maize production: -15.7%

Grain maize production did not exceed 34 million tonnes in the 2002-2003 marketing year, the lowest level since 1996. While areas fell only by 1.9%, yields were down 16.4% on the previous year.

- Only Greece showed an increase (10.5%) in production.

- Belgium, Germany, Spain, Italy, the Netherlands, Austria and Portugal recorded production falls of between 3.2% and 13.8%.

- France and Luxembourg recorded falls of 30.4% and 46.8%.

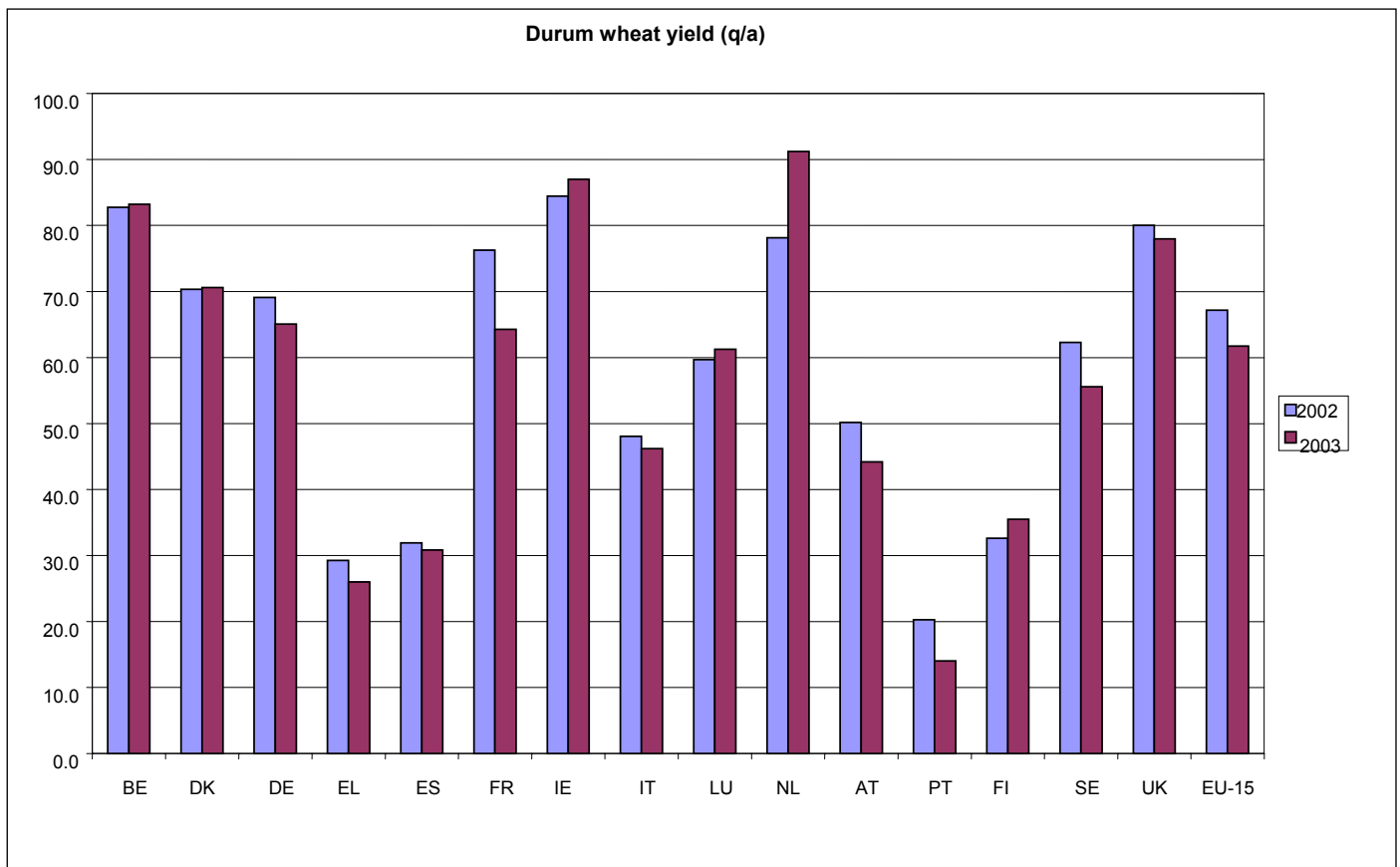
Durum wheat production: -4.5%

Durum wheat appeared less affected than other cereals. In fact production in the 2001-2002 marketing year had been at the highest level recorded since 1996. The fall in production was primarily due to a 3.0% decline in areas. At 24.4 q/ha yields remained close to normal.

Barley production (1000 tonnes)								
	1997	1998	1999	2000	2001	2002	2003	Trend 2003-2002
BE	372.5	374.5	387.6	333.4	368.7	342.7	250.6	-26.9%
DK	3887.0	3565.0	3675.0	3979.8	3966.2	4120.9	3712.8	-9.9%
DE	13398.8	12512.3	13301.0	12105.8	13494.6	10928.0	10665.7	-2.4%
EL	350.0	331.0	320.0	258.0	249.0	201.0	185.5	-7.7%
ES	8549.5	10895.3	7459.0	11063.0	6249.1	8332.9	8698.4	4.4%
FR	10004.0	10431.2	9377.4	9709.3	9799.1	10987.7	9868.0	-10.2%
IE	1087.2	1073.0	1277.5	1309.9	1277.2	962.8	1147.0	19.1%
IT	1179.6	1359.1	1313.3	1261.6	1125.7	1190.3	1093.7	-8.1%
LU	68.6	63.2	67.8	53.5	53.6	51.8	54.4	5.0%
NL	268.3	214.5	364.5	287.8	386.8	315.3	371.7	17.9%
AT	1257.8	1211.6	1152.8	854.7	1012.4	861.4	882.3	2.4%
PT	28.8	26.2	29.0	36.3	12.6	20.0	11.5	-42.5%
FI	2003.4	1316.2	1567.7	1984.8	1786.0	1739.0	1697.0	-2.4%
SE	2086.2	1686.9	1852.5	1634.4	1642.1	1777.9	1542.1	-13.3%
UK	7828.0	6496.0	6578.0	6492.0	6660.0	6128.0	6471.0	5.6%
EU-15	52369.9	51555.8	48723.1	51364.4	48083.0	47959.7	46651.7	-2.7%

Grain maize production (1000 tonnes)								
	1997	1998	1999	2000	2001	2002	2003	Trend 2003-2002
BE	255.6	292.3	405.5	397.4	460.9	530.7	473.4	-10.8%
DK
DE	3188.4	2781.5	3256.9	3324.0	3504.5	3738.4	3414.7	-8.7%
EL	2205.0	1897.0	1800.0	1850.0	1900.0	2002.0	2205.7	10.2%
ES	4451.5	4349.1	3731.0	3991.8	5028.8	4463.4	4321.1	-3.2%
FR	16536.0	14887.9	15356.7	16018.4	16426.5	16439.9	11447.0	-30.4%
IE
IT	10004.7	9054.6	10017.2	10139.6	10553.7	10563.8	9806.4	-7.2%
LU	2.3	4.3	3.1	2.0	4.3	2.3	1.2	-46.8%
NL	158.5	150.7	112.2	223.3	241.8	227.5	196.0	-13.8%
AT	1574.6	1386.0	1464.4	1617.5	1493.0	1666.6	1452.1	-12.9%
PT	863.0	980.9	933.8	875.3	906.6	796.6	757.7	-4.9%
FI
SE
UK
EU-15	39239.6	35784.2	37080.8	38439.3	40520.2	40431.2	34075.3	-15.7%

Durum wheat production (1000 t)								
	1997	1998	1999	2000	2001	2002	2003	Trend 2003-2002
BE	:	:	:	:	:	:	:	.
DK	:	:	:	:	:	:	:	.
DE	33.5	60.0	64.6	43.4	23.8	25.8	36.0	39.8%
EL	1462.0	1468.0	1400.0	1450.0	1429.2	1402.0	1309.0	-6.6%
ES	1152.9	1364.8	726.0	1939.2	1899.5	2073.2	2248.8	8.5%
FR	878.8	1551.9	1558.7	1685.0	1351.6	1613.7	1423.0	-11.8%
IE	:	:	:	:	:	:	:	.
IT	3757.5	4890.6	4514.5	4310.3	3624.0	4182.6	4024.4	-3.8%
LU	:	:	:	:	:	0.0	:	.
NL	:	:	:	:	:	:	:	.
AT	50.4	66.1	98.4	43.7	46.1	49.5	63.8	29.1%
PT	32.0	28.0	115.0	172.5	102.7	327.2	145.0	-55.7%
FI	:	:	:	:	:	:	:	.
SE	:	:	:	:	:	:	:	.
UK	6.0	6.0	6.0	6.0	6.0	18.7	14.0	-25.0%
EU-15	7339.6	9375.4	8418.6	9606.7	8459.2	9666.9	9228.1	-4.5%



➤ ESSENTIAL INFORMATION – METHODOLOGICAL NOTES

Methodology box:

EU statistics on cereals are governed by Council Regulation No 837/90 of 26 March 1990. This stipulates that where production exceeds 50 000 tonnes for any cereal, the Member States shall provide Eurostat with annual data on:

- areas under cultivation,
- average yield and
- production harvested.

The data shall be submitted on the following dates:

Areas	Yield and production
- 1 October of the harvest year: provisional data.	- 15 November of the harvest year: initial estimates.
- 1 April following the harvest year: final figures.	- 1 February following the harvest year: provisional data.
	- 1 October following the harvest year: final figures

The following are included under cereal production:

- Common wheat ;
- Durum wheat ;
- Rye;
- Barley ;
- Oats
- Grain maize
- Cereals not elsewhere specified
- Maslin
- Sorghum
- Triticale
- Buckwheat
- Canary seed
- Mixed grains other than maslin
- Rice

Further information:

➤ Databases

NewCronos, Theme 5

To obtain information or to order publications, databases and special sets of data, please contact the **Data Shop** network:

DANMARK	DEUTSCHLAND	ESPAÑA	FRANCE	ITALIA – Roma
DANMARKS STATISTIK Bibliotek og Information Eurostat Data Shop Sejrogade 11 DK-2100 KØBENHAVN Ø Tlf. (45) 39 17 30 30 Fax (45) 39 17 30 03 E-mail: bib@dst.dk URL: http://www.dst.dk/bibliotek	Statistisches Bundesamt Eurostat Data Shop Berlin Otto-Braun-Straße 70-72 (Eingang: Karl-Marx-Allee) D-10178 Berlin Tel. (49) 1888-644 94 27/28 (49) 611 75 94 27 Fax (49) 1888-644 94 30 E-Mail: datashop@destatis.de URL: http://www.eu-datashop.de/	INE Eurostat Data Shop Paseo de la Castellana, 183 Despacho 011B Entrada por Estébanez Caldeón E-28046 MADRID Tel. (34) 915 839 167/ 915 839 500 Fax (34) 915 830 357 E-mail: datashop@ine.es URL: http://www.ine.es/produser/datashop/index.html Member of the MIDAS Net	INSEE Info Service Eurostat Data Shop 195, rue de Bercy Tour Gamma A F-75582 PARIS CEDEX 12 Tél. (33) 1 53 17 88 44 Fax (33) 1 53 17 88 22 E-mail: datashop@insee.fr Member of the MIDAS Net	ISTAT Centro di informazione statistica Sede di Roma Eurostat Data Shop Via Cesare Balbo, 11a I-00184 Roma Tel. (39) 06 46 73 32 28 Fax (39) 06 46 73 31 01/ 07 E-mail: datashop@istat.it URL: http://www.istat.it/Prodotti-e/Allegati/Eurostatdatashop.html Member of the MIDAS Net
ITALIA – Milano	NEDERLAND	PORTUGAL	SUOMI/FINLAND	SVERIGE
ISTAT Ufficio Regionale per la Lombardia Eurostat Data Shop Via Fieno 3 I-20123 MILANO Tel. (39) 02 80 61 32 460 Fax (39) 02 80 61 32 304 E-mail: mileuro@tin.it URL: http://www.istat.it/Prodotti-e/Allegati/Eurostatdatashop.html Member of the MIDAS Net	Centraal Bureau voor de Statistiek Eurostat Data Shop - Voorburg Postbus 4000 NL-2270 JM VOORBURG Nederland Tel. (31) 70 337 49 00 Fax (31) 70 337 59 84 E-mail: datashop@cbs.nl URL: www.cbs.nl/eurodatashop	Eurostat Data Shop Lisboa INE/Serviço de Difusão Av. António José de Almeida, 2 P-1000-043 LISBOA Tel. (351) 21 842 61 00 Fax (351) 21 842 63 64 E-mail: data.shop@ine.pt	Statistics Finland Eurostat Data Shop Helsinki Tilastokirjasto PL-2B FIN-00022 Tilastokeskus Työpajakatu 13 B, 2 Kerros, Helsinki P. (358) 9 17 34 22 21 F. (358) 9 17 34 22 79 Sähköposti: datashop@stat.fi URL: http://www.tilastokeskus.fi/tk/kk/datashop/	Statistics Sweden Information service Eurostat Data Shop Karlavägen 100 - Box 24 300 S-104 51 STOCKHOLM Tfn (46) 8 50 69 48 01 Fax (46) 8 50 69 48 99 E-post: infoservice@scb.se URL: http://www.scb.se/templates/Standard_22884.asp
UNITED KINGDOM	NORGE	SCHWEIZ/SUISSE/SVIZZERA	UNITED STATES OF AMERICA	
Eurostat Data Shop Office for National Statistics Room 1.015 Cardiff Road Newport South Wales NP10 8XG United Kingdom Tel. (44) 1633 81 33 69 Fax (44) 1633 81 33 33 E-mail: eurostat.datashop@ons.gov.uk	Statistics Norway Library and Information Centre Eurostat Data Shop Kongens gate 6 Boks 8131 Dep. N-0033 OSLO Tel. (47) 21 09 46 42 / 43 Fax (47) 21 09 45 04 E-mail: Datashop@ssb.no URL: http://www.ssb.no/biblioteket/datashop/	Statistisches Amt des Kantons Zürich Eurostat Data Shop Bleichenweg 5 CH-8090 Zürich Tel. (41) 1 225 12 12 Fax (41) 1 225 12 99 E-mail: datashop@statistik.zh.ch URL: http://www.statistik.zh.ch	Harver Analytics Eurostat Data Shop 60 East 42nd Street Suite 3310 NEW YORK, NY 10165 USA Tel. (1) 212 986 93 00 Fax (1) 212 986 69 81 E-mail: eurodata@haver.com URL: http://www.haver.com/	

Media Support Eurostat (for professional journalists only):

Bech Building Office A4/017 • L-2920 Luxembourg • Tel. (352) 4301 33408 • Fax (352) 4301 35349 • e-mail: eurostat-mediasupport@cec.eu.int

For information on methodology:

Pierre Bruyas, Eurostat / E2, L-2920 Luxembourg, Tel. (352) 4301 32477, Fax (352) 4301 37319, E-mail: Pierre.Bruyas@cec.eu.int

ORIGINAL: French

Please visit our web site at www.europa.eu.int/comm/eurostat/ for further information!

A list of worldwide sales outlets is available at the **Office for Official Publications of the European Communities**.

2 rue Mercier – L-2985 Luxembourg
 Tel. (352) 2929 42118 Fax (352) 2929 42709
 URL: <http://publications.eu.int>
 E-mail: info-info-opoce@cec.eu.int

BELGIQUE/BELGIË – DANMARK – DEUTSCHLAND – GREECE/ELLADA – ESPAÑA – FRANCE – IRELAND – ITALIA – LUXEMBOURG – NEDERLAND – ÖSTERREICH
 PORTUGAL – SUOMI/FINLAND – SVERIGE – UNITED KINGDOM – ISLAND – NORGE – SCHWEIZ/SUISSE/SVIZZERA – BALGARIJA – ČESKÁ REPUBLIKA – CYPRUS
 EESTI – HRVATSKA – MAGYARORSZÁG – MALTA – POLSKA – ROMÂNIA – RUSSIA – SLOVAKIA – SLOVENIA – TÜRKIYE – AUSTRALIA – CANADA – EGYPT – INDIA
 ISRAËL – JAPAN – MALAYSIA – PHILIPPINES – SOUTH KOREA – THAILAND – UNITED STATES OF AMERICA

Order form

I would like to subscribe to Statistics in focus (from 1.1.2004 to 31.12.2004):

(for the Data Shop and sales office addresses see above)

All 9 themes (approximately 200 issues)

Paper: EUR 240

Language required: DE EN FR

Statistics in focus can be downloaded (pdf file) free of charge from the Eurostat web site. You only need to register. For other solutions, contact your Data Shop.

Please send me a free copy of 'Eurostat mini-guide' (catalogue containing a selection of Eurostat products and services)

Language required: DE EN FR

I would like a free subscription to 'Statistical References', the information letter on Eurostat products and services

Language required: DE EN FR

Mr Mrs Ms

(Please use block capitals)

Surname: _____ Forename: _____

Company: _____ Department: _____

Function: _____

Address: _____

Post code: _____ Town: _____

Country: _____

Tel.: _____ Fax: _____

E-mail: _____

Payment on receipt of invoice, preferably by:

Bank transfer

Visa Eurocard

Card No: _____ Expires on: ____/____/____

Please confirm your intra-Community VAT number:

If no number is entered, VAT will be automatically applied. Subsequent reimbursement will not be possible.