

Harmonized Indices of Consumer Prices

August 2004

Statistics in focus

ECONOMY AND FINANCE

45/2004

Author
Lene Mejer

Contents

Price Indices.....	2
Rates of Change.....	4
EEA Index Numbers and Rates of Change.....	6
COICOP/HICP Main categories.....	7

Euro-zone* annual inflation, as measured by the Monetary Union Index of Consumer Prices (MUICP), remained stable at 2.3% between July and August 2004. A year earlier the rate was 2.1%.

EU annual inflation, as measured by the European Index of Consumer Prices (EICP)**, fell from 2.2% in July to 2.1% in August 2004. A year earlier the rate was 2.0%.

EEA annual inflation, as measured by the European Economic Area Index of Consumer Prices (EEAICP), was 2.1% in August 2004.

In August 2004, the highest annual rates in EU Member States were recorded in **Latvia** (7.8%), **Hungary** (7.2%), **Slovakia** (7.0%) and **Poland** (4.9%); the lowest rates were observed in **Finland** (0.3%), **Denmark** (0.9%), the **Netherlands** and **Sweden** (both 1.2%).

For the **USA***** and **Japan***** no August data was available in time for publication.

The inflation rates for the **euro-zone**, the **EU** and the latest available rates for the **USA***** and **Japan***** are shown in the graph below.

Methodological notes can be accessed via the Eurostat internet site under Publications/Methods and nomenclatures/Harmonized Indices of Consumer Prices – [Short guide for users](#) (issue date: 17/05/2004).

* The euro-zone comprises: Belgium, Germany, Greece, Spain, France, Ireland, Italy, Luxembourg, the Netherlands, Austria, Portugal and Finland.

** The EICP (EICP='European Index of Consumer Prices' as defined in Council Regulation (EC) No 2494/95 of 23 October 1995) is the official EU aggregate. It covers 15 Member States until April 2004 and 25 Member States starting from May 2004. The new Member States are integrated into the EICP starting from May 2004 using a chain index formula. This means, for example, that the annual rate of change in August 2004 is the change from August 2003 to April 2004 of the 15 old Member States combined with the change from April 2004 to August 2004 of the 25 Member States.

*** For the USA and Japan the national CPIs are given, which are not strictly comparable with the HICPs.

Annual Rate of Change (%)

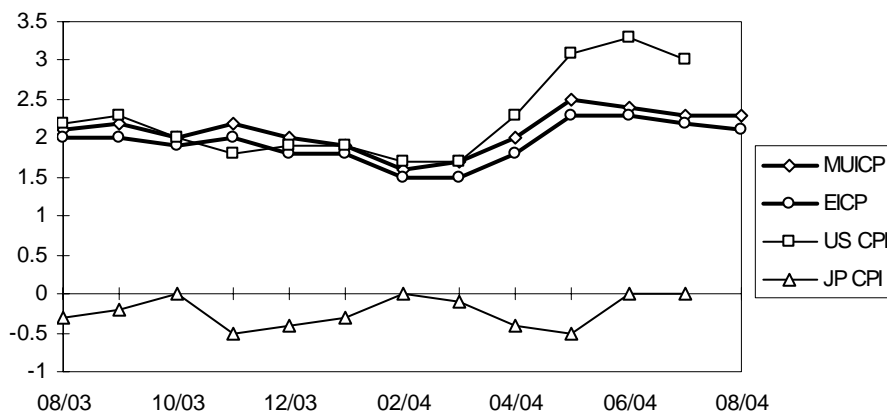


TABLE I
HARMONIZED INDICES OF CONSUMER PRICES
INDEX NUMBERS
1996 = 100

	Euro-zone	EU15/EU25 (EICP)	BE	CZ	DK	DE	EE	EL	ES	FR	IE	IT	CY
Annual Average Index													
2001	108.5	108.6	109.0	131.1	110.7	106.2	134.6	120.1	112.8	106.3	116.0	110.9	114.3
2002	110.9	110.8	110.7	133.0	113.4	107.6	139.4	124.8	116.8	108.3	121.5	113.8	117.5
2003	113.2	113.0	112.3	132.9	115.6	108.8	141.4	129.0	120.5	110.7	126.3	117.0	122.2
Monthly Index - 2002													
Jan	109.6	109.5	108.7	133.5	111.6	107.2	137.6	122.4	114.2	107.3	118.3	112.0	114.4
Feb	109.8	109.7	110.5	133.6	112.1	107.5	138.4	121.0	114.3	107.4	119.0	111.8	114.2
Mar	110.4	110.3	110.7	133.6	113.0	107.7	138.8	124.5	115.3	107.8	120.1	112.8	115.1
Apr	110.9	110.8	110.8	133.6	113.4	107.6	140.0	125.5	116.9	108.3	121.0	113.6	116.8
May	111.1	111.0	111.0	133.4	113.5	107.7	140.3	125.8	117.3	108.4	121.7	113.9	117.2
Jun	111.1	111.0	110.7	133.1	113.6	107.6	140.2	125.5	117.3	108.4	121.9	114.0	118.0
Jul	111.0	110.8	109.6	133.4	113.2	108.0	139.7	123.0	116.5	108.3	121.3	113.9	117.2
Aug	111.0	110.9	111.2	133.1	113.4	107.8	139.1	123.2	116.9	108.5	122.0	113.7	118.1
Sep	111.3	111.2	111.3	132.4	114.1	107.6	139.3	125.8	117.3	108.7	122.4	114.3	119.5
Oct	111.6	111.5	111.2	132.0	114.4	107.5	140.0	126.4	118.4	108.9	122.9	114.9	120.0
Nov	111.5	111.4	111.0	131.8	114.3	107.1	139.9	126.5	118.6	108.8	123.0	115.2	119.7
Dec	112.0	111.9	111.1	131.9	114.3	108.3	139.7	127.4	119.0	109.0	123.9	115.5	120.2
Monthly Index - 2003													
Jan	111.9	111.7	110.0	132.6	114.5	108.2	141.1	126.4	118.5	109.3	123.9	115.2	119.5
Feb	112.4	112.2	112.3	132.8	115.3	108.8	141.5	126.1	118.7	110.1	125.1	114.7	119.7
Mar	113.1	112.8	112.6	132.8	116.2	109.0	141.8	129.3	119.6	110.6	126.0	116.1	122.4
Apr	113.2	113.0	112.4	133.0	116.2	108.7	141.6	129.6	120.6	110.4	126.6	117.0	123.3
May	113.1	112.9	112.0	133.0	115.9	108.4	141.3	130.2	120.5	110.3	126.4	117.2	123.0
Jun	113.2	112.9	112.4	133.1	115.9	108.6	140.8	130.0	120.6	110.5	126.5	117.3	122.4
Jul	113.1	112.8	111.1	133.0	115.2	108.9	141.0	127.3	119.9	110.4	126.0	117.2	120.2
Aug	113.3	113.1	113.0	132.9	115.1	109.0	141.0	127.3	120.5	110.7	126.8	116.8	120.9
Sep	113.7	113.5	113.2	132.4	116.0	108.8	141.4	129.9	120.8	111.2	127.0	117.7	123.4
Oct	113.8	113.6	112.8	132.6	115.7	108.7	141.7	130.4	121.6	111.4	127.0	118.1	124.4
Nov	113.9	113.6	113.0	133.0	115.9	108.5	141.6	130.6	122.0	111.5	127.0	118.4	124.2
Dec	114.2	113.9	113.0	133.2	115.7	109.5	141.4	131.4	122.2	111.6	127.5	118.4	122.9
Monthly Index - 2004													
Jan	114.0	113.7	111.5	135.3	115.6	109.5	142.0	130.3	121.2	111.7	126.7	117.7	121.4
Feb	114.2	113.9	113.6	135.4	116.1	109.7	142.3	129.4	121.3	112.2	127.8	117.5	121.4
Mar	115.0	114.6	113.7	135.6	116.7	110.2	142.8	133.1	122.2	112.7	128.3	118.8	122.5
Apr	115.5	115.0	114.3	135.7	116.8	110.5	143.7	133.6	123.9	113.0	128.7	119.7	123.4
May	115.9	115.5	114.7	136.5	117.2	110.7	146.5	134.2	124.6	113.4	129.0	119.9	124.5
Jun	115.9	115.5	114.6	136.7	116.9	110.7	147.0	133.9	124.8	113.5	129.7	120.1	125.3
Jul	115.7	115.3	113.4	137.1	116.5	111.1	146.6	131.3	123.9	113.3	129.2	119.8	123.7
Aug	115.9\$	115.5\$	115.3	137.1	116.1	111.3	146.5	130.9	124.5	113.5\$	130.0	119.6	124.3
Sep													
Oct													
Nov													
Dec													

* estimated \$ provisional # revised : not available

TABLE I
HARMONIZED INDICES OF CONSUMER PRICES
1996 = 100
INDEX NUMBERS

LV	LT	LU	HU	MT	NL	AT	PL	PT	SI	SK	FI	SE	UK	
Annual Average Index														
121.1	117.6	109.9	178.5	116.4	113.8	106.9	159.7	114.2	146.8	150.2	109.8	107.6	106.9	2001
123.5	118.1	112.1	187.8	119.5	118.2	108.8	162.8	118.4	157.7	155.5	112.0	109.7	108.3	2002
127.1	116.9	115.0	196.6	121.8	120.8	110.2	164.0	122.3	166.7	168.6	113.5	112.3	109.8	2003
Monthly Index - 2002														
123.6	119.8	109.6	183.5	116.7	116.1	107.9	162.7	116.1	152.5	154.3	110.9	108.2	107.1	Jan
123.2	119.6	110.9	185.2	115.7	116.7	108.0	162.9	115.9	153.7	154.8	111.2	108.5	107.3	Feb
123.8	118.9	111.0	186.6	116.2	117.9	108.2	163.3	116.4	154.9	154.8	111.8	109.6	107.7	Mar
123.9	118.8	111.6	188.2	119.9	118.7	108.7	164.2	117.4	157.2	155.4	112.3	109.9	108.1	Apr
124.1	118.5	112.1	189.1	120.7	118.5	108.9	163.8	118.3	157.8	155.5	112.5	110.1	108.4	May
123.4	118.1	112.4	188.2	120.6#	118.1	108.8	163.1	118.7	157.6	154.9	112.3	109.9	108.4	Jun
123.0	117.7	111.7	188.0	121.8#	118.0	108.7	162.2	119.0	158.8	154.6	111.9	109.3	108.1	Jul
122.0	117.1	112.6	187.4	121.9	118.2	109.0	161.6	119.2	159.1	155.6	111.9	109.4	108.4	Aug
122.9	116.5	113.0	188.7	121.7	119.4	108.9	162.2	119.1	159.8	156.2	112.4	110.2	108.7	Sep
123.8	117.2	113.5	189.7	121.4	119.3	109.2	162.7	119.8	160.2	156.3	112.7	110.6	108.9	Oct
124.0	117.3	113.7	189.6	118.3	118.7	109.2	162.5	120.5	160.0	156.4	112.3	110.3	108.9	Nov
124.3	117.7	113.5	189.8	118.7	118.5	109.5	162.7	120.6	160.8	156.9	112.3	110.7	109.3	Dec
Monthly Index - 2003														
125.4	117.6	113.2	192.3	117.6	119.2	109.7	163.3	120.7	162.7	165.3	112.5	111.0	108.6	Jan
125.8	117.4	114.5	193.8	118.1	120.1	109.9	163.5	120.7	163.6	166.2	113.5	112.1	109.0	Feb
126.5	117.7	115.1	195.5	119.0	121.2	110.2	164.0	120.8	164.7	167.3	113.9	112.8	109.4	Mar
126.9	117.8	114.9	195.5	122.2	121.3	110.1	164.3	121.8	165.7	167.4	113.8	112.4	109.7	Apr
127.2	117.6	114.7	195.7	123.0	121.2	109.9	164.3	122.7	166.6	167.4	113.7	112.3	109.7	May
128.0	117.7	114.7	196.4	123.2	120.6	109.9	164.1	122.7	167.4	167.9	113.6	112.1	109.6	Jun
127.6	116.8	113.8	196.9	123.9	120.5	109.8	163.3	122.5	168.5	167.8	113.0	111.9	109.5	Jul
126.2	116.0	115.2	196.3	124.1	120.8	110.1	162.6	122.6	168.1	169.6	113.2	111.8	109.9	Aug
126.8	115.6	116.0	197.4	123.8	121.8	110.4	163.4	122.9	167.9	170.7	113.8	112.7	110.2	Sep
127.9	115.7	115.5	198.9	124.5	121.6	110.4	164.4	123.2	168.1	171.1	113.7	112.8	110.4	Oct
128.6	116.2	116.0	200.2	120.4	121.1	110.6	165.0	123.3	168.4	171.3	113.6	112.5	110.3	Nov
128.7	116.2	116.2	200.5	121.6	120.4	110.9	165.3	123.4	168.4	171.5	113.7	112.7	110.7	Dec
Monthly Index - 2004														
130.4	116.2	115.8	205.1	120.9	121.0	111.0	166.2	123.4	169.2	178.9	113.4	112.4	110.1	Jan
131.2	116.0	117.3	207.4	121.0	121.7	111.5	166.4	123.2	169.5	180.1	113.9	112.3	110.4	Feb
132.5	116.6	117.4	208.5	121.5	122.7	111.9	167.0	123.5	170.5	180.5	113.4	113.3	110.6	Mar
133.3	117.0	118.0	209.1	126.6	123.1	111.8	168.1	124.7	171.6	180.5	113.4	113.6	111.0	Apr
135.0	118.8	118.6	211.0	126.8	123.3	112.2	170.0	125.7	173.1	181.1	113.6	114.0	111.4	May
135.8	118.9	119.1	211.1	127.2#	122.4	112.4	171.2	127.2	173.9	181.5	113.5	113.4	111.3	Jun
136.1	118.9	118.1	211.1	127.8	122.0	112.1	171.0	126.1	174.8	181.7	113.2	113.2	111.0	Jul
136.0	118.5	119.4	210.4	127.2	122.2\$	112.5\$	170.5	125.6	174.3	181.4	113.5	113.1	111.3	Aug
														Sep
														Oct
														Nov
														Dec

* estimated \$ provisional # revised : not available

TABLE II
HARMONIZED INDICES OF CONSUMER PRICES
RATES OF CHANGE (%)

	Euro-zone	EU15/EU25 (EICP)	BE	CZ	DK	DE	EE	EL	ES	FR	IE	IT	CY
Annual Average Rate of Change													
2001/12	2.3	2.2	2.4	4.5	2.3	1.9	5.6	3.7	2.8	1.8	4.0	2.3	2.0
2002/12	2.3	2.1	1.6	1.4	2.4	1.3	3.6	3.9	3.6	1.9	4.7	2.6	2.8
2003/12	2.1	2.0	1.5	-0.1	2.0	1.0	1.4	3.4	3.1	2.2	4.0	2.8	4.0
2004/8	2.1\$	1.9\$	1.7	1.8	1.0	1.5	2.0	3.0	2.8	2.4\$	2.6	2.5	2.1
Annual Rate of Change - 2002													
Jan	2.6	2.5	2.6	3.4	2.5	2.2	4.2	4.8	3.1	2.5	5.2	2.3	2.2
Feb	2.5	2.4	2.5	3.4	2.4	1.8	4.5	3.8	3.2	2.3	4.9	2.7	2.3
Mar	2.5	2.3	2.5	3.3	2.5	2.0	4.4	4.4	3.2	2.2	5.1	2.5	2.0
Apr	2.3	2.1	1.7	2.9	2.3	1.5	4.6	4.1	3.7	2.1	5.0	2.5	2.4
May	2.0	1.8	1.4	2.1	1.9	1.1	4.2	3.8	3.7	1.5	5.0	2.4	2.3
Jun	1.9	1.7	0.8	0.9	2.2	0.8	3.9	3.6	3.4	1.5	4.5	2.2	2.1
Jul	2.0	1.9	1.1	0.2	2.2	1.0	3.3	3.6	3.5	1.6	4.2	2.4	3.8
Aug	2.1	1.9	1.3	0.2	2.4	1.1	2.7	3.8	3.7	1.8	4.5	2.6	4.1
Sep	2.1	1.9	1.2	0.4	2.5	1.0	2.7	3.8	3.5	1.8	4.5	2.8	3.5
Oct	2.3	2.1	1.3	0.2	2.7	1.3	3.1	3.9	4.0	1.9	4.4	2.8	2.7
Nov	2.3	2.2	1.1	0.2	2.8	1.1	3.0	3.9	3.9	2.1	4.7	2.9	3.0
Dec	2.3	2.2	1.3	0.1	2.6	1.1	2.7	3.5	4.0	2.2	4.6	3.0	3.1
Annual Rate of Change - 2003													
Jan	2.1	2.0	1.2	-0.7	2.6	0.9	2.5	3.3	3.8	1.9	4.7	2.9	4.5
Feb	2.4	2.3	1.6	-0.6	2.9	1.2	2.2	4.2	3.8	2.5	5.1	2.6	4.8
Mar	2.4	2.3	1.7	-0.6	2.8	1.2	2.2	3.9	3.7	2.6	4.9	2.9	6.3
Apr	2.1	2.0	1.4	-0.4	2.5	1.0	1.1	3.3	3.2	1.9	4.6	3.0	5.6
May	1.8	1.7	0.9	-0.3	2.1	0.6	0.7	3.5	2.7	1.8	3.9	2.9	4.9
Jun	1.9	1.8	1.5	0.0	2.0	0.9	0.4	3.6	2.8	1.9	3.8	2.9	3.7
Jul	1.9	1.8	1.4	-0.3	1.8	0.8	0.9	3.5	2.9	1.9	3.9	2.9	2.6
Aug	2.1	2.0	1.6	-0.2	1.5	1.1	1.4	3.3	3.1	2.0	3.9	2.7	2.4
Sep	2.2	2.0	1.7	0.0	1.7	1.1	1.5	3.3	3.0	2.3	3.8	3.0	3.3
Oct	2.0	1.9	1.4	0.5	1.1	1.1	1.2	3.2	2.7	2.3	3.3	2.8	3.7
Nov	2.2	2.0	1.8	0.9	1.4	1.3	1.2	3.2	2.9	2.5	3.3	2.8	3.8
Dec	2.0	1.8	1.7	1.0	1.2	1.1	1.2	3.1	2.7	2.4	2.9	2.5	2.2
Annual Rate of Change - 2004													
Jan	1.9	1.8	1.4	2.0	1.0	1.2	0.6	3.1	2.3	2.2	2.3	2.2	1.6
Feb	1.6	1.5	1.2	2.0	0.7	0.8	0.6	2.6	2.2	1.9	2.2	2.4	1.4
Mar	1.7	1.5	1.0	2.1	0.4	1.1	0.7	2.9	2.2	1.9	1.8	2.3	0.1
Apr	2.0	1.8	1.7	2.0	0.5	1.7	1.5	3.1	2.7	2.4	1.7	2.3	0.1
May	2.5	2.3	2.4	2.6	1.1	2.1	3.7	3.1	3.4	2.8	2.1	2.3	1.2
Jun	2.4	2.3	2.0	2.7	0.9	1.9	4.4	3.0	3.5	2.7	2.5	2.4	2.4
Jul	2.3	2.2	2.1	3.1	1.1	2.0	4.0	3.1	3.3	2.6	2.5	2.2	2.9
Aug	2.3\$	2.1\$	2.0	3.2	0.9	2.1	3.9	2.8	3.3	2.5\$	2.5	2.4	2.8
Sep													
Oct													
Nov													
Dec													

* estimated \$ provisional # revised : not available

TABLE II
HARMONIZED INDICES OF CONSUMER PRICES
RATES OF CHANGE (%)

LV	LT	LU	HU	MT	NL	AT	PL	PT	SI	SK	FI	SE	UK	
Annual Average Rate of Change														
2.5	1.3	2.4	9.1	2.5	5.1	2.3	5.3	4.4	8.6	7.2	2.7	2.7	1.2	2001/12
2.0	0.4	2.1	5.2	2.6	3.9	1.7	1.9	3.7	7.5	3.5	2.0	2.0	1.3	2002/12
2.9	-1.1	2.5	4.7	1.9	2.2	1.3	0.7	3.3	5.7	8.5	1.3	2.3	1.4	2003/12
4.9	-0.2	2.7	6.5	2.6	1.6\$	1.6\$	2.5	2.6	4.1	8.4	0.4	1.3	1.3	2004/8
Annual Rate of Change - 2002														
3.4	3.3	2.1	6.6	4.3	4.9	2.0	3.6	3.7	8.4	6.5	2.9	2.9	1.6	Jan
3.3	2.9	2.2	6.1	3.2	4.5	1.7	3.6	3.3	7.9	4.5	2.5	2.7	1.5	Feb
3.3	1.8	1.7	6.0	3.1	4.3	1.7	3.3	3.3	7.5	3.8	2.6	3.0	1.5	Mar
2.9	1.5	1.9	6.0	2.7	4.2	1.7	3.0	3.5	8.4	3.7	2.6	2.2	1.3	Apr
2.1	0.7	1.3	5.5	2.4	3.8	1.7	1.5	3.4	7.6	3.3	1.8	1.7	0.8	May
0.9	-0.3	1.3	4.8	2.1	3.8	1.5	1.2	3.5	6.9	2.8	1.5	1.7	0.6	Jun
1.1	0.3	1.9	4.5	2.2	3.8	1.5	1.3	3.6	7.5	2.2	2.0	1.8	1.1	Jul
0.9	-0.9	2.0	4.4	2.3	3.7	2.1	1.4	3.9	7.6	3.0	1.8	1.7	1.0	Aug
1.0	-1.3	2.2	4.6	2.2	3.6	1.6	1.4	3.8	7.2	3.2	1.4	1.2	1.0	Sep
1.6	-0.9	2.5	4.9	2.6	3.5	1.7	1.2	4.1	7.0	3.2	1.7	1.7	1.4	Oct
1.6	-0.8	2.7	4.8	2.3#	3.2	1.7	1.0	4.1	6.5	3.0	1.7	1.4	1.6	Nov
1.5	-0.9	2.8	4.9	2.1	3.2	1.7	0.8	4.0	7.1	3.2	1.7	1.7	1.7	Dec
Annual Rate of Change - 2003														
1.5	-1.8	3.3	4.8	0.8	2.7	1.7	0.4	4.0	6.7	7.1	1.4	2.6	1.4	Jan
2.1	-1.8	3.2	4.6	2.1	2.9	1.8	0.4	4.1	6.4	7.4	2.1	3.3	1.6	Feb
2.2	-1.0	3.7	4.8	2.4	2.8	1.8	0.4	3.8	6.3	8.1	1.9	2.9	1.6	Mar
2.4	-0.8	3.0	3.9	1.9	2.2	1.3	0.1	3.7	5.4	7.7	1.3	2.3	1.5	Apr
2.5	-0.8	2.3	3.5	1.9	2.3	0.9	0.3	3.7	5.6	7.7	1.1	2.0	1.2	May
3.7	-0.3	2.0	4.4	2.2#	2.1	1.0	0.6	3.4	6.2	8.4	1.2	2.0	1.1	Jun
3.7	-0.8	1.9	4.7	1.7#	2.1	1.0	0.7	2.9	6.1	8.5	1.0	2.4	1.3	Jul
3.4	-0.9	2.3	4.7	1.8	2.2	1.0	0.6	2.9	5.7	9.0	1.2	2.2	1.4	Aug
3.2	-0.8	2.7	4.6	1.7	2.0	1.4	0.7	3.2	5.1	9.3	1.2	2.3	1.4	Sep
3.3	-1.3	1.8	4.8	2.6	1.9	1.1	1.0	2.8	4.9	9.5	0.9	2.0	1.4	Oct
3.7	-0.9	2.0	5.6	1.8	2.0	1.3	1.5	2.3	5.3	9.5	1.2	2.0	1.3	Nov
3.5	-1.3	2.4	5.6	2.4	1.6	1.3	1.6	2.3	4.7	9.3	1.2	1.8	1.3	Dec
Annual Rate of Change - 2004														
4.0	-1.2	2.3	6.7	2.8	1.5	1.2	1.8	2.2	4.0	8.2	0.8	1.3	1.4	Jan
4.3	-1.2	2.4	7.0	2.5	1.3	1.5	1.8	2.1	3.6	8.4	0.4	0.2	1.3	Feb
4.7	-0.9	2.0	6.6	2.1	1.2	1.5	1.8	2.2	3.5	7.9	-0.4	0.4	1.1	Mar
5.0	-0.7	2.7	7.0	3.6	1.5	1.5	2.3	2.4	3.6	7.8	-0.4	1.1	1.2	Apr
6.1	1.0	3.4	7.8	3.1	1.7	2.1	3.5	2.4	3.9	8.2	-0.1	1.5	1.5	May
6.1	1.0	3.8	7.5	3.2#	1.5	2.3	4.3	3.7	3.9	8.1	-0.1	1.2	1.6	Jun
6.7	1.8	3.8	7.2	3.1	1.2	2.1	4.7	2.9	3.7	8.3	0.2	1.2	1.4	Jul
7.8	2.2	3.6	7.2	2.5	1.2\$	2.2\$	4.9	2.4	3.7	7.0	0.3	1.2	1.3	Aug
														Sep
														Oct
														Nov
														Dec

* estimated \$ provisional # revised : not available

TABLE III
HARMONIZED INDICES OF CONSUMER
PRICES
INDEX NUMBERS 1996 = 100

	EEA	IS	NO	CH**
Annual Average Index				
2001	108.6	117.3	113.0	103.8
2002	110.9	123.5	113.9	104.5
2003	113.0	125.2	116.2	105.2
Monthly Index - 2002				
Jan	109.5	122.9	112.9	104.1
Feb	109.8	122.6	113.3	104.1
Mar	110.3	123.1	113.6	104.1
Apr	110.8	123.0	113.6	105.0
May	111.0	123.0	113.8	105.1
Jun	111.0	123.7	113.8	104.9
Jul	110.9	123.9	113.7	104.2
Aug	110.9	123.3	113.3	104.4
Sep	111.2	123.9	114.1	104.5
Oct	111.5	124.4	114.3	105.1
Nov	111.4	124.1	114.7	104.9
Dec	111.9	124.1	115.7	104.9
Monthly Index - 2003				
Jan	111.8	124.3	117.6	104.9
Feb	112.3	124.0	117.9	105.1
Mar	112.9	125.4	117.2	105.5
Apr	113.0	125.3	116.4	105.7
May	112.9	125.2	115.8	105.5
Jun	113.0	125.3	115.5	105.5
Jul	112.9	125.0	115.1	104.7
Aug	113.1	124.5	115.3	104.9
Sep	113.5	125.4	115.8	105.1
Oct	113.6	125.8	115.8	105.6
Nov	113.7	126.0	115.8	105.5
Dec	114.0	126.3	115.8	105.5
Monthly Index - 2004				
Jan	113.7	126.1	115.9	105.1
Feb	113.9	125.7	116.1	105.1
Mar	114.6	126.6	116.7	105.4
Apr	115.1	127.2	116.9	106.3
May	115.5	128.2	117.0	106.5
Jun	115.5	128.9	117.0	106.7
Jul	115.3	128.5	116.9	105.6
Aug	115.5\$	128.3	116.6	106.0
Sep				
Oct				
Nov				
Dec				

TABLE IV
HARMONIZED INDICES OF CONSUMER
PRICES
RATES OF CHANGE (%)

	EEA	IS	NO	CH**	
Annual Average Rate of Change					
	2.2	6.6	2.7	0.9	2001/12
	2.1	5.3	0.8	0.6	2002/12
	2.0	1.4	2.0	0.6	2003/12
	1.9\$	1.8	0.5	0.6	2004/8
Annual Rate of Change - 2002					
	2.4	9.8	0.9	0.5	Jan
	2.3	9.5	0.4	0.7	Feb
	2.3	9.1	0.4	0.5	Mar
	2.1	7.7	-0.1	1.1	Apr
	1.8	6.0	-0.4	0.6	May
	1.7	4.7	-0.4	0.3	Jun
	1.9	4.0	1.2	-0.1	Jul
	1.9	3.5	1.1	0.5	Aug
	1.9	3.2	1.2	0.5	Sep
	2.1	3.0	1.3	1.2	Oct
	2.2	2.3	1.8	0.9	Nov
	2.2	1.9	2.6	0.9	Dec
Annual Rate of Change - 2003					
	2.0	1.1	4.2	0.8	Jan
	2.3	1.1	4.1	0.9	Feb
	2.3	1.9	3.2	1.3	Mar
	2.0	1.9	2.5	0.7	Apr
	1.7	1.8	1.8	0.4	May
	1.8	1.3	1.5	0.5	Jun
	1.8	0.9	1.2	0.3	Jul
	1.9	1.0	1.8	0.5	Aug
	2.0	1.2	1.5	0.5	Sep
	1.9	1.1	1.3	0.5	Oct
	2.0	1.5	1.0	0.5	Nov
	1.8	1.8	0.1	0.6	Dec
Annual Rate of Change - 2004					
	1.7	1.4	-1.4	0.2	Jan
	1.5	1.4	-1.5	0.1	Feb
	1.5	1.0	-0.4	-0.1	Mar
	1.8	1.5	0.4	0.5	Apr
	2.3	2.4	1.0	0.9	May
	2.3	2.9	1.3	1.1	Jun
	2.2	2.8	1.6	0.9	Jul
	2.1\$	3.1	1.1	1.0	Aug
					Sep
					Oct
					Nov
					Dec

* estimated \$ provisional # revised : not available ** national CPI

TABLE V

MAIN CATEGORIES OF HARMONIZED INDICES OF CONSUMER PRICES

August 2003 / August 2004

ANNUAL RATES OF CHANGE (%)

	00.	01.	02.	03.	04.	05.	06.	07.	08.	09.	10.	11.	12.
Euro-zone	2.3\$	0.5\$	8.2\$	1.0\$	2.7\$	1.0\$	8.2\$	3.9\$	-2.5\$	0.2\$	3.2\$	2.9\$	2.2\$
EU15/EU25 (IICP)	2.1\$	0.5\$	6.6\$	0.1\$	2.9\$	0.7\$	7.3\$	3.9\$	-2.3\$	0.0\$	3.7\$	2.9\$	2.5\$
BE	2.0	0.3	4.9	0.8	3.9	0.9	1.3	4.7	1.3	-0.3	0.5	3.0	2.5
CZ	3.2	5.2	4.4	-4.1	1.2	-2.1	2.2	3.9	9.4	1.5	2.4	5.8	5.2
DK	0.9	-1.2	-7.0	1.5	2.9	2.7	3.1	3.6	-3.1	-2.8	2.8	2.5	2.8
DE	2.1	-0.3	7.4	-0.2	2.3	-0.1	20.5	3.1	-0.8	-0.7	3.1	0.6	1.5
EE	3.9	5.7	0.6	-0.7	4.4	-0.5	2.9	11.0	-3.0	0.6	2.3	3.9	4.2
EL	2.8	-0.5	4.6	4.0	5.4	0.0	5.7	4.2	-3.4	2.9	4.4	4.3	2.0
ES	3.3	3.8	5.6	1.9	3.9	1.7	0.2	5.8	-1.0	0.3	3.9	4.0	2.8
FR	2.5\$	-0.9\$	16.6\$	1.6\$	3.2\$	1.5\$	2.6\$	4.2\$	-0.8\$	-0.1\$	3.0\$	3.7\$	2.3\$
IE	2.5	-0.6	3.5	-3.9	3.7	-2.1	5.6	5.7	2.4	0.9	6.1	4.5	2.2
IT	2.4	1.7	6.9	1.6	2.1	2.3	3.7	3.8	-7.7	2.6	1.8	2.8	3.0
CY	2.8	5.0	10.0	-0.2	6.5	-0.6	3.0	-0.4	-11.9	4.1	3.7	4.7	3.0
LV	7.8	11.6	4.8	2.1	8.3	1.8	16.3	8.0	-0.6	4.1	4.2	8.2	10.1
LT	2.2	5.3	2.0	-0.9	0.2	-2.8	9.1	6.8	-13.3	-1.2	1.0	1.8	6.4
LU	3.6	1.8	7.4	0.5	3.9	1.6	2.0	7.5	-3.0	0.1	1.3	3.3	1.7
HU	7.2	8.0	11.2	4.0	12.7	1.2	3.4	6.2	-0.7	4.7	14.0	10.2	5.3
MT	2.5	1.3	14.0	-3.4	0.9	2.7	6.3	4.5	17.4	0.1	3.6	0.2	4.9
NL	1.2\$	-5.2\$	8.5\$	-0.5\$	2.9\$	-1.0\$	8.3\$	3.8\$	-1.7\$	-0.9\$	3.2\$	1.6\$	2.4\$
AT	2.2\$	2.0\$	2.1\$	0.4\$	4.8\$	0.1\$	1.3\$	3.7\$	-0.8\$	0.9\$	1.4\$	2.1\$	2.8\$
PL	4.9	9.3	2.6	-3.5	4.3	2.2	2.2	9.3	-0.1	1.5	2.2	3.1	2.4
PT	2.4	0.9	2.7	-4.0	2.7	1.7	1.8	4.5	-0.8	2.3	10.8	4.6	2.5
SI	3.7	-1.0	4.4	1.9	8.2	2.4	0.4	6.4	1.1	4.3	7.6	5.1	4.7
SK	7.0	6.4	3.9	0.4	15.8	-2.9	8.8	5.8	4.6	3.3	9.4	9.8	3.4
FI	0.3	1.5	-13.1	1.1	2.5	0.3	2.4	1.1	-8.4	1.4	6.2	0.7	2.6
SE	1.2	-0.5	0.4	-4.0	3.3	-1.4	4.4	4.2	-4.2	-0.6	6.2	2.0	2.6
UK	1.3	-0.2	2.0	-5.7	3.8	-0.3	1.1	3.8	-1.2	-1.0	4.7	2.9	3.2
EEA	2.1\$	0.5\$	6.6\$	0.0\$	2.9\$	0.7\$	7.3\$	3.9\$	-2.3\$	0.0\$	3.7\$	2.9\$	2.5\$
IS	3.1	2.4	1.5	-3.0	5.8	0.8	5.7	6.7	0.7	1.4	5.8	3.4	2.6
NO	1.1	1.4	7.2	-7.9	4.8	-2.2	5.3	2.1	-4.8	0.6	6.9	2.0	-0.2

* estimated \$ provisional # revised : not available

COICOP/HICP Code

- | | | | |
|------------|---|------------|----------------------------------|
| 00. | HICP (all-items index) | 06. | Health |
| 01. | Food and non-alcoholic beverages | 07. | Transports |
| 02. | Alcoholic beverages and tobacco | 08. | Communications |
| 03. | Clothing and footwear | 09. | Recreation and culture |
| 04. | Housing, water, electricity, gas and other fuels | 10. | Education |
| 05. | Furnishings, household equipment and routine maintenance of the house | 11. | Restaurants and hotels |
| | | 12. | Miscellaneous goods and services |

Further information:

➤ Databases

NewCronos, Theme 2, Domain: price

To obtain information or to order publications, databases and special sets of data, please contact the **Data Shop** network:

DANMARK	DEUTSCHLAND	ESPAÑA	FRANCE	ITALIA – Roma
DANMARKS STATISTIK Bibliotek og Information Eurostat Data Shop Sejrgade 11 DK-2100 KØBENHAVN Ø Tlf. (45) 39 17 30 30 Fax (45) 39 17 30 03 E-mail: hib@dst.dk URL: http://www.dst.dk/bibliotek	Statistisches Bundesamt Eurostat Data Shop Berlin Otto-Braun-Straße 70-72 (Eingang: Karl-Marx-Allee) D-10178 Berlin Tel. (49) 1888-644 94 27/28 (49) 611 75 94 27 Fax (49) 1888-644 94 30 E-Mail: datashop@destatis.de URL: http://www.eu-datashop.de/	INE Eurostat Data Shop Paseo de la Castellana, 183 Despacho 011B Entrada por Estébanez Calderón E-28046 MADRID Tel. (34) 915 839 167/ 915 839 500 Fax (34) 915 830 357 E-mail: datashop.eurostat@ine.es URL: http://www.ine.es/prodyser/datashop/index.html <i>Member of the MIDAS Net</i>	INSEE Info Service Eurostat Data Shop 195, rue de Bercy Tour Gamma A F-75582 PARIS CEDEX 12 Tél. (33) 1 53 17 88 44 Fax (33) 1 53 17 88 22 E-mail: datashop@insee.fr <i>Member of the MIDAS Net</i>	ISTAT Centro di informazione statistica Sede di Roma Eurostat Data Shop Via Cesare Balbo, 11a I-00184 Roma Tel. (39) 06 46 73 32 28 Fax (39) 06 46 73 31 01/ 07 E-mail: datashop@istat.it URL: http://www.istat.it/Prodotti/Alleghi/Eurostatdatashop.html <i>Member of the MIDAS Net</i>
ITALIA – Milano	NEDERLAND	PORTUGAL	SUOMI/FINLAND	SVERIGE
ISTAT Ufficio Regionale per la Lombardia Eurostat Data Shop Via Fieno 3 I-20123 MILANO Tel. (39) 02 80 61 32 460 Fax (39) 02 80 61 32 304 E-mail: mileuro@tin.it URL: http://www.istat.it/Prodotti/Alleghi/Eurostatdatashop.html <i>Member of the MIDAS Net</i>	Centraal Bureau voor de Statistiek Eurostat Data Shop - Voorburg Postbus 4000 NL-2270 JM VOORBURG Nederland Tel. (31) 70 337 49 00 Fax (31) 70 337 59 84 E-mail: datashop@cbs.nl URL: www.cbs.nl/eurodatashop	Eurostat Data Shop Lisboa INE/Serviço de Difusão Av. António José de Almeida, 2 P-1000-043 LISBOA Tel. (351) 21 842 61 00 Fax (351) 21 842 63 64 E-mail: data.shop@ine.pt	Statistics Finland Eurostat Data Shop Helsinki Tilastokirjasto PL 2B FIN-00022 Tilastokeskus Työpajakatu 13 B, 2. Kerros, Helsinki P. (358) 9 17 34 22 21 F. (358) 9 17 34 22 79 Sähköposti: datashop@stat.fi URL: http://tilastokeskus.fi/tup/datashop/index.html	Statistics Sweden Information service Eurostat Data Shop Karlavägen 100 - Box 24 300 S-104 51 STOCKHOLM Tfn (46) 8 50 69 48 01 Fax (46) 8 50 69 48 99 E-post: infoservice@scb.se URL: http://www.scb.se/templates/Standard_22884.asp
UNITED KINGDOM	NORGE	SCHWEIZ/SUISSE/SVIZZERA	UNITED STATES OF AMERICA	
Eurostat Data Shop Office for National Statistics Room 1.015 Cardiff Road Newport South Wales NP10 8XG United Kingdom Tel. (44) 1633 81 33 69 Fax (44) 1633 81 33 33 E-mail: eurostat.datashop@ons.gov.uk	Statistics Norway Library and Information Centre Eurostat Data Shop Kongens gate 6 Boks 8131 Dep. N-0033 OSLO Tel. (47) 21 09 46 42 / 43 Fax (47) 21 09 45 04 E-mail: Datashop@ssb.no URL: http://www.ssb.no/biblioteket/datashop/	Statistisches Amt des Kantons Zürich Eurostat Data Shop Eurostat Weg 5 Bleichenweg 5 CH-8090 Zürich Tel. (41) 1 225 12 12 Fax (41) 1 225 12 99 E-mail: datashop@statistik.zh.ch URL: http://www.statistik.zh.ch	Harver Analytics Eurostat Data Shop 60 East 42nd Street Suite 3310 NEW YORK, NY 10165 USA Tel. (1) 212 986 93 00 Fax (1) 212 986 69 81 E-mail: eurodata@haver.com URL: http://www.haver.com/	

Media Support Eurostat (for professional journalists only):
Bech Building Office A4/017 • L-2920 Luxembourg • Tel. (352) 4301 33408 • Fax (352) 4301 35349 • e-mail: eurostat-mediasupport@cec.eu.int

For information on methodology:

Lene Mejer, Eurostat / C5, L-2920 Luxembourg, Tel. (352) 4301 33375, Fax (352) 4301 33989,

E-mail: estat-hicp-methods@cec.eu.int

ORIGINAL: English

Please visit our web site at www.europa.eu.int/comm/eurostat/ for further information!

A list of worldwide sales outlets is available at the **Office for Official Publications of the European Communities**.

2 rue Mercier – L-2985 Luxembourg

URL: <http://publications.eu.int>

E-mail: info-info-opoce@cec.eu.int

BELGIQUE/BELGIË – DANMARK – DEUTSCHLAND – GREECE/ELLADA – ESPAÑA – FRANCE – IRELAND – ITALIA – LUXEMBOURG – NEDERLAND – ÖSTERREICH
PORTUGAL – SUOMI/FINLAND – SVERIGE – UNITED KINGDOM – ÍSLAND – NORGE – SCHWEIZ/SUISSE/SVIZZERA – BALGARIJA – ČESKÁ REPUBLIKA – CYPRUS
EESTI – HRVATSKA – MAGYARORSZÁG – MALTA – POLSKA – ROMÂNIA – RUSSIA – SLOVAKIA – SLOVENIA – TÜRKIYE – AUSTRALIA – CANADA – EGYPT – INDIA
ISRAËL – JAPAN – MALAYSIA – PHILIPPINES – SOUTH KOREA – THAILAND – UNITED STATES OF AMERICA