



# Statistics in focus

## AGRICULTURE AND FISHERIES

THEME 5 – 27/2003

### AGRICULTURE

## Contents

### Cows' milk collection by dairies in EU 15 July 2003

# Despite drought, cows' milk collection remained fairly stable in July 2003 compared to July 2002 in EU 15

*Franco Zampogna, Alain Bisval*

*Warning : These figures concern cows' milk "collection" by dairies from farms and not cows' milk "production" from farms.*

### Monthly comparison

Exceptional weather conditions in July in Europe brought important consequences to the cows' milk collection in seven Member States. In France, milk collection decreased again by 8.5 % (11.5 % taking into account the calendar effect) compared to June when it has already decreased. Portugal (-5 %), Belgium (-3.6 %), Ireland (-3.1 %), United Kingdom (-2.7 %), Luxembourg (-6 %), and Sweden (-1.5 %) have also decreased. In the other States, the collection was steady or slightly increased in the Netherlands (+2.6 %) and Germany (+2.1 %).

### The trend in the cows' milk collection by dairies excluding the calendar effect, July 2002 - July 2003

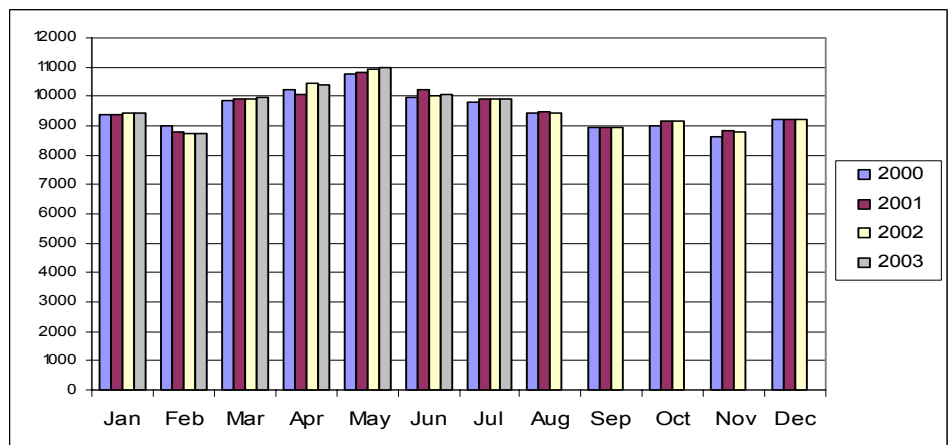
	Collection 1000 t	Comparative importance /EU15	Comparison with the previous month (in %)												Rate of change (%)
			Jul 2002	Aug 2002	Sep 2002	Oct 2002	Nov 2002	Dec 2002	Jan 2003	Feb 2003	Mar 2003	Apr 2003	May 2003	Jun 2003	
BE	260.7	2.6	-8.7	-8.7	2.0	-0.7	5.5	3.6	-7.4	9.4	6.4	7.3	-9.3	-3.6	-6.8
DK	382.3	3.9	-2.0	-4.4	0.4	-2.2	6.6	2.6	-9.4	11.1	-0.3	5.4	-4.7	0.0	1.4
DE	2307.9	23.3	-4.9	-6.4	3.8	-3.0	7.1	3.1	-7.8	13.4	-2.3	6.2	-6.1	2.1	2.9
EL	49.4	0.5	0.1	-8.5	-5.5	-5.8	1.1	9.2	-3.6	17.4	4.3	1.2	-4.9	1.3	3.5
ES	527.7	5.3	-4.3	-6.4	1.4	-4.4	2.9	-1.6	-7.8	13.8	4.0	3.8	-6.0	1.6	-4.9
FR	1838.1	18.5	-6.3	-1.1	9.7	0.6	6.9	1.2	-9.9	9.6	10.1	2.9	-14.3	-8.5	-3.0
IE	649.0	6.5	-9.5	-14.6	-16.6	-44.2	-39.3	-8.5	49.2	116.6	46.0	18.8	-7.2	-3.1	0.9
IT	869.3	8.8	-4.2	-2.4	1.8	0.9	2.8	1.9	-5.8	10.9	0.4	-0.1	-6.9	1.2	-0.7
LU	22.9	0.2	-7.3	-5.1	0.0	-2.4	9.4	3.3	-10.0	9.1	4.3	6.7	-6.7	-2.6	-3.6
NL	893.2	9.0	-1.4	-5.2	4.0	-2.0	6.4	2.4	-9.8	9.4	-1.4	6.2	-7.1	2.6	2.2
AT	234.0	2.4	-5.1	-5.4	1.4	-6.6	7.0	2.8	-7.8	12.9	1.8	8.2	-9.2	1.3	-1.3
PT	176.7	1.8	-7.6	-8.1	-1.2	-5.5	3.3	0.9	-5.3	15.3	4.1	6.7	-5.8	-5.0	-10.3
FI	203.7	2.1	-1.3	-4.6	0.6	-0.8	5.9	2.1	-8.4	10.6	-2.1	4.2	-4.9	0.0	0.0
SE	270.6	2.7	-2.8	-4.6	0.4	-1.9	6.8	2.9	-7.6	13.2	-1.4	2.7	-6.0	-1.5	-1.7
UK	1235.0	12.4	-5.1	-6.0	0.5	-4.8	7.8	3.2	-8.0	15.6	4.7	7.5	-7.3	-2.7	2.8
EU-15	9920.3	100.0	-5.0	-5.3	2.5	-4.0	5.0	2.0	-7.5	14.3	4.3	5.6	-8.2	-1.5	0.0

Data for Belgium are estimated from April 2003 to July 2003.

### Annual Comparison

Cows' milk collection remained fairly stable in July 2003 compared to July 2002 in EU-15. Despite unfavourable weather conditions in July 2003 compared to July 2002, Greece (+3.5 %), Germany (+2.9 %), United Kingdom (+2.8 %) and the Netherlands (+2.2 %) increased their collection by more than 2 % and balanced the total EU-15 cows' milk collection.

### Monthly milk collection EU-15, 1000 t January 2000 – July 2003



Source : Eurostat New Cronos 25/09/2003



# Further information:

## ➤ Databases

NewCronos, Theme 5, Domain: zpa 1

To obtain information or to order publications, databases and special sets of data, please contact the **Data Shop** network:

DANMARK	DEUTSCHLAND	ESPAÑA	FRANCE	ITALIA – Roma
<b>DANMARKS STATISTIK</b> Bibliotek og Information Eurostat Data Shop Sejrogade 11 DK-2100 KØBENHAVN Ø Tlf. (45) 39 17 30 30 Fax (45) 39 17 30 03 E-mail: <a href="mailto:bb@dst.dk">bb@dst.dk</a> URL: <a href="http://www.dst.dk/bibliotek">http://www.dst.dk/bibliotek</a>	<b>STATISTISCHES BUNDESAMT</b> Eurostat Data Shop Berlin Otto-Braun-Straße 70-72 (Eingang: Karl-Marx-Allee) D-10178 BERLIN Tel. (49) 1888-644 94 27/28 (49) 611 75 94 27 Fax (49) 1888-644 94 30 E-Mail: <a href="mailto:datashop@desistat.de">datashop@desistat.de</a> URL: <a href="http://www.eu-datashop.de/">http://www.eu-datashop.de/</a>	<b>INE Eurostat Data Shop</b> Paseo de la Castellana, 183 Despacho 011B Entrada por Estébanez Calderón E-28046 MADRID Tel. (34) 915 839 167/ 915 839 500 Fax (34) 915 830 357 E-mail: <a href="mailto:datashop.eurostat@ine.es">datashop.eurostat@ine.es</a> URL: <a href="http://www.ine.es/prodysier/datashop/index.html">http://www.ine.es/prodysier/datashop/index.html</a>	<b>INSEE Info Service</b> Eurostat Data Shop 195, rue de Bercy Tour Gamma A F-75582 PARIS CEDEX 12 Tél. (33) 1 53 17 88 44 Fax (33) 1 53 17 88 22 E-mail: <a href="mailto:datashop@insee.fr">datashop@insee.fr</a>	<b>ISTAT</b> Centro di Informazione Statistica Sede di Roma, Eurostat Data Shop Via Cesare Balbo, 11a I-00184 ROMA Tel. (39) 06 46 73 32 28 Fax (39) 06 46 73 31 01/07 E-mail: <a href="mailto:datashop@istat.it">datashop@istat.it</a> URL: <a href="http://www.istat.it/Prodotti-e/Allegati/Eurostatdatashop.html">http://www.istat.it/Prodotti-e/Allegati/Eurostatdatashop.html</a>
ITALIA – Milano	NEDERLAND	NORGE	PORTUGAL	SCHWEIZ/SUISSE/SVIZZERA
<b>ISTAT</b> Ufficio Regionale per la Lombardia Eurostat Data Shop Via Fieno 3 I-20123 MILANO Tel. (39) 02 80 61 32 460 Fax (39) 02 80 61 32 304 E-mail: <a href="mailto:mileuro@tin.it">mileuro@tin.it</a> URL: <a href="http://www.istat.it/Prodotti-e/Allegati/Eurostatdatashop.html">http://www.istat.it/Prodotti-e/Allegati/Eurostatdatashop.html</a>	<b>Centraal Bureau voor de Statistiek</b> Eurostat Data Shop-Voorburg Postbus 4000 2270 JM VOORBURG Nederland Tel. (31-70) 337 49 00 Fax (31-70) 337 59 84 E-mail: <a href="mailto:datashop@cbs.nl">datashop@cbs.nl</a> URL: <a href="http://www.cbs.nl/eurodatashop">www.cbs.nl/eurodatashop</a>	<b>Statistics Norway</b> Library and Information Centre Eurostat Data Shop Kongens gate 6 Boks 8131 Dep. N-0033 OSLO Tel. (47) 21 09 46 42/43 Fax (47) 21 09 45 04 E-mail: <a href="mailto:Datashop@ssb.no">Datashop@ssb.no</a> URL: <a href="http://www.ssb.no/biblioteket/datashop/">http://www.ssb.no/biblioteket/datashop/</a>	<b>Eurostat Data Shop Lisboa</b> INE/Serviço de Difusão Av. António José de Almeida, 2 P-1000-043 LISBOA Tel. (351) 21 842 61 00 Fax (351) 21 842 63 64 E-mail: <a href="mailto:datashop@ine.pt">datashop@ine.pt</a>	<b>Statistisches Amt des Kantons</b> Zürich, Eurostat Data Shop Bleichenweg 5 CH-8090 Zürich Tel. (41) 1 225 12 12 Fax (41) 1 225 12 99 E-mail: <a href="mailto:datashop@statistik.zh.ch">datashop@statistik.zh.ch</a> URL: <a href="http://www.statistik.zh.ch">http://www.statistik.zh.ch</a>
SUOMI/FINLAND	SVERIGE	UNITED KINGDOM	UNITED STATES OF AMERICA	
<b>STATISTICS FINLAND</b> Eurostat Data Shop Helsinki Tilastokirjasto PL 2B FIN-00022 Tilastokeskus Työpajakatu 13 B, 2. kerros, Helsinki P. (358-9) 17 34 22 21 F. (358-9) 17 34 22 79 Sähköposti: <a href="mailto:datashop@stat.fi">datashop@stat.fi</a> URL: <a href="http://tilastokeskus.fi/tik/kk/datashop/">http://tilastokeskus.fi/tik/kk/datashop/</a>	<b>STATISTICS SWEDEN</b> Information service Eurostat Data Shop Karlavägen 100 - Box 24 300 S-104 51 STOCKHOLM Tfn (46-8) 50 69 48 01 Fax (46-8) 50 69 48 99 E-post: <a href="mailto:infoservice@scb.se">infoservice@scb.se</a> URL: <a href="http://www.scb.se/tjanster/datashop/datashop.asp">http://www.scb.se/tjanster/datashop/datashop.asp</a>	<b>Eurostat Data Shop</b> Office for National Statistics Room 1.015 Cardiff Road Newport NP10 8XG South Wales United Kingdom Tel. (44-1633) 81 33 69 Fax (44-1633) 81 33 33 E-mail: <a href="mailto:eurostat.datashop@ons.gov.uk">eurostat.datashop@ons.gov.uk</a>	<b>HAVER ANALYTICS</b> Eurostat Data Shop 60 East 42nd Street Suite 3310 NEW YORK, NY 10165 USA Tel. (1-212) 986 93 00 Fax (1-212) 986 69 81 E-mail: <a href="mailto:euromdata@haver.com">euromdata@haver.com</a> URL: <a href="http://www.haver.com/">http://www.haver.com/</a>	

### Media Support Eurostat (for professional journalists only):

Bech Building Office A4/017 • L-2920 Luxembourg • Tel. (352) 4301 33408 • Fax (352) 4301 35349 • e-mail: [eurostat-mediasupport@cec.eu.int](mailto:eurostat-mediasupport@cec.eu.int)

## For information on methodology

Franco Zampogna, Eurostat/F2, L-2920 Luxembourg, Tel. (352) 4301 37268, Fax (352) 4301 37318, E-mail: [franco.zampogna@cec.eu.int](mailto:franco.zampogna@cec.eu.int)

Alain Bisval, Eurostat/F2, L-2920 Luxembourg, Tel. (352) 4301 37023, Fax (352) 4301 37318, E-mail: [alain.bisval@cec.eu.int](mailto:alain.bisval@cec.eu.int)

ORIGINAL: English

Please visit our web site at [www.europa.eu.int/comm/eurostat/](http://www.europa.eu.int/comm/eurostat/) for further information!

A list of worldwide sales outlets is available at the **Office for Official Publications of the European Communities**.

2 rue Mercier - L-2985 Luxembourg  
Tel. (352) 2929 42118 Fax (352) 2929 42709  
URL: <http://publications.eu.int>  
E-mail: [info-info-opoce@cec.eu.int](mailto:info-info-opoce@cec.eu.int)

BELGIQUE/BELGIË - DANMARK - DEUTSCHLAND - GREECE/ELLADA - ESPAÑA - FRANCE - IRELAND - ITALIA - LUXEMBOURG - NEDERLAND - ÖSTERREICH  
PORTUGAL - SUOMI/FINLAND - SVERIGE - UNITED KINGDOM - ISLAND - NORGE - SCHWEIZ/SUISSE/SVIZZERA - BALGARJIA - ČESKÁ REPUBLIKA - CYPRUS  
EESTI - HRVATSKA - MAGYARORSZÁG - MALTA - POLSKA - ROMÂNIA - RUSSIA - SLOVAKIA - SLOVENIA - TÜRKIYE - AUSTRALIA - CANADA - EGYPT - INDIA  
ISRAËL - JAPAN - MALAYSIA - PHILIPPINES - SOUTH KOREA - THAILAND - UNITED STATES OF AMERICA

## Order form

I would like to subscribe to Statistics in focus (from 1.1.2003 to 31.12.2003):

(for the Data Shop and sales office addresses see above)

All 9 themes (approximately 200 issues)

Paper: EUR 240

Language required:  DE  EN  FR

Statistics in focus can be downloaded (pdf file) free of charge from the Eurostat web site. You only need to register. For other solutions, contact your Data Shop.

Please send me a free copy of 'Eurostat mini-guide' (catalogue containing a selection of Eurostat products and services)

Language required:  DE  EN  FR

I would like a free subscription to 'Statistical References', the information letter on Eurostat products and services

Language required:  DE  EN  FR

Mr  Mrs  Ms

(Please use block capitals)

Surname: \_\_\_\_\_ Forename: \_\_\_\_\_

Company: \_\_\_\_\_ Department: \_\_\_\_\_

Function: \_\_\_\_\_

Address: \_\_\_\_\_

Post code: \_\_\_\_\_ Town: \_\_\_\_\_

Country: \_\_\_\_\_

Tel.: \_\_\_\_\_ Fax: \_\_\_\_\_

E-mail: \_\_\_\_\_

Payment on receipt of invoice, preferably by:

Bank transfer

Visa  Eurocard

Card No: \_\_\_\_\_ Expires on: \_\_\_\_/\_\_\_\_/\_\_\_\_

Please confirm your intra-Community VAT number:

If no number is entered, VAT will be automatically applied. Subsequent reimbursement will not be possible.