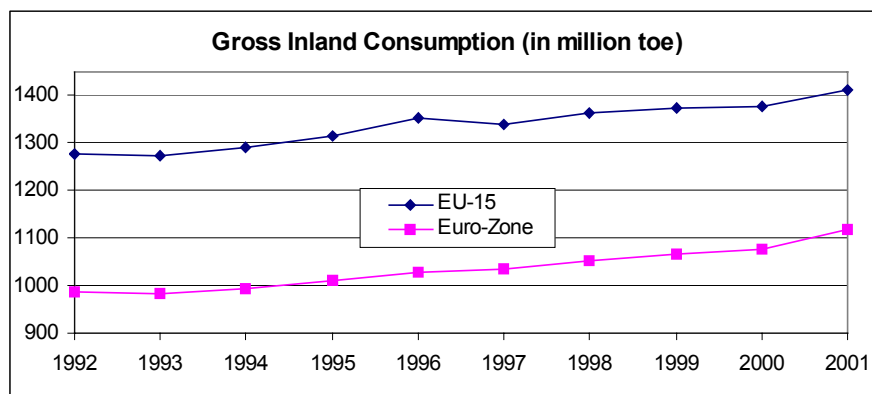


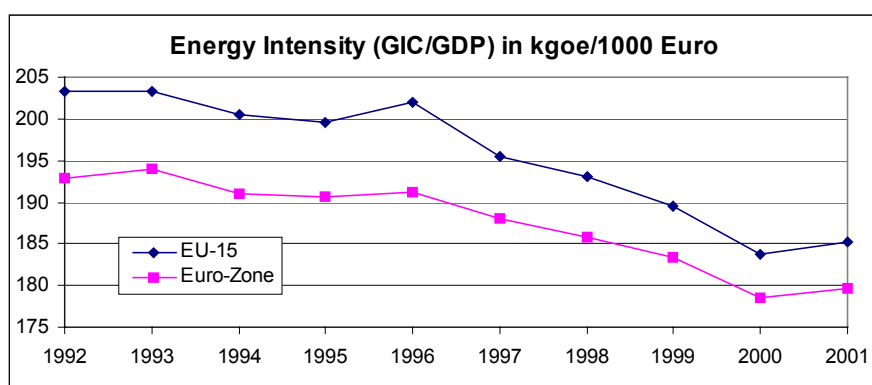
# Statistical aspects of the energy economy in 2001

*Antigone GIKAS*



The total gross inland consumption (GIC) of energy in the European Union in 2001 (not adjusted for climatic variations) was 1410.7 million toe (tonnes of oil equivalent), an increase of 2.3% from 2000. As regards the Euro-Zone, gross inland consumption attained 1117.6 million toe.

Consumption is highly influenced by developments in the main consuming sectors, including power generation. During 1991-1993 most of the Member States of the European Union experienced a recession, although at varied times. General recovery took hold in 1994 and there has been a general upwards trend in gross inland consumption, as well as in the Gross Domestic Product (GDP), from that year up to 2001.



In the same period, energy intensity (GIC divided by GDP) has been steadily decreasing. Energy intensity is a measure of how much energy is used to produce a unit of economic output. The decoupling of increasing economic activity from increasing energy consumption is often quoted as a goal for sustainable development. The exceptions in this downwards trend of energy intensity are the year 1996, where a particularly high energy consumption has been observed due to cold weather conditions, and the year 2001 where the GDP growth rate was inferior to that of GIC.

N.B.1: All data in this report represent the cumulative monthly figures and may differ from annual data. In addition, figures for certain renewable energy sources (solar, biomass except the part used in power stations) are not included. For this reason, the total for the different kinds of energy also differs from the total published in the Energy Balances, which now include all forms of renewable energy.

N.B.2: The tonne of oil equivalent is a standardised conventional unit defined on the basis of one tonne of oil having a net calorific value of 41 868 kilojoules per kilogramme.

N.B.3: Euro-Zone is EU-11 (B, D, E, F, IRL, I, L, NL, A, P, FIN) up to 31.12.2000 and EU-12 (EU-11 plus EL) from 1.1.2001.

## Statistics in focus

### ENVIRONMENT AND ENERGY

THEME 8 – 19/2002

#### ENERGY

## Contents

Gross Inland Consumption

Energy Intensity

Energy Consumption Trends

Energy Production Trends

Summary Energy Balance Sheets

Energy Dependence Rate

Energy Consumption per Capita

Principal Aggregates of Energy Balance Sheets



## Energy consumption trends

Of the five biggest energy-consuming Member States, gross inland consumption in 2001 increased in the United Kingdom (4.8%), in Spain (3.1%), in France (2.6%) and in Germany (1.4%) and decreased in Italy (-0.3%) compared with 2000 consumption. In all remaining Member States of the European Union, gross inland consumption in 2001 increased -percentages varied between +0.5% (Portugal) and +6.7% (Sweden)- with reference to 2000, except Belgium (-1.0%).

The following trends are observed in energy consumption by product between 2001 and 2000 for the European Union:

- a) an increase in hard coal consumption (+1.3%), for a second year in a row, following a steady decrease observed in recent years
- b) an increase in lignite consumption (+5.7%)
- c) an increase in oil consumption (+2.2%) after two successive years of decrease
- d) an increase in natural gas consumption of 1.9%
- e) an increase in nuclear energy of 3.3%

In the Euro-Zone, gross inland consumption in 2001 for all the above mentioned products also showed upwards trends as for the EU total, except for hard coal, where a decrease of 3.2% was observed.

The biggest share by far in total gross inland consumption was that of oil (42.1%), followed by natural gas (24.6%) and nuclear energy (15.5%); in 2000 the shares were 42.1%, 24.7% and 15.3% respectively.


## Energy production trends

Primary production in the European Union, excluding recovered products, was 685.2 million toe in 2001, a decrease of 0.6% compared with 2000. Some of the most important changes observed between the two reference years are:

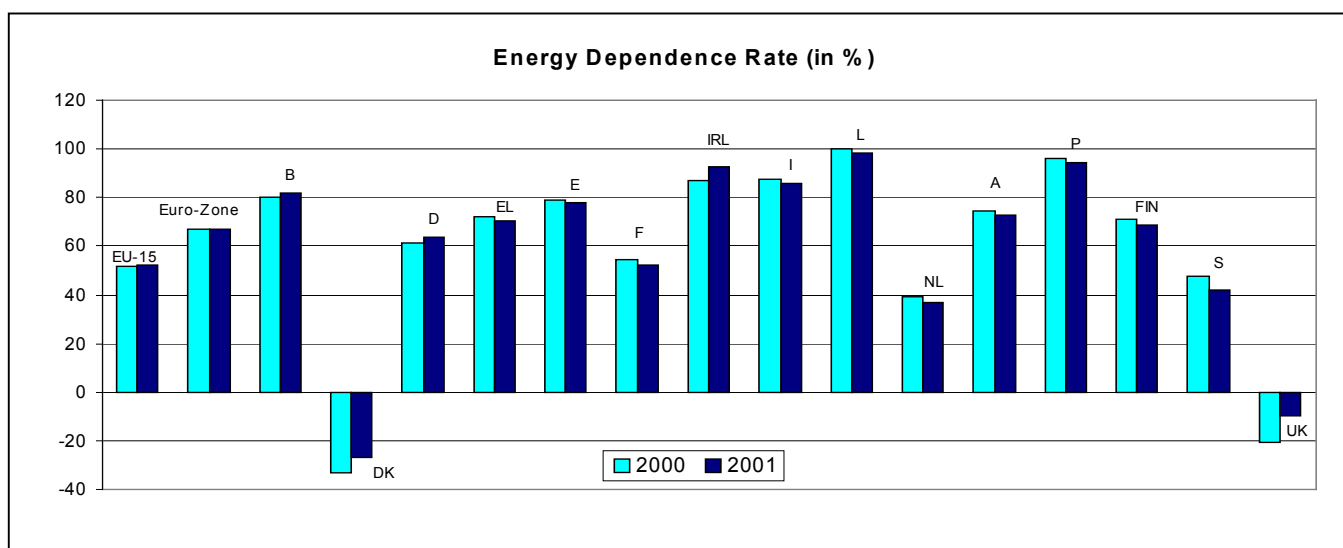
- a) a decrease of 8.7% in total hard coal production; as regards the two biggest producer Member States, production fell by 17.9% in Germany, while it increased by 6.2% in the United Kingdom
- b) an increase in total lignite production of 5.1%; production increased by 3.9% in Germany and by 5.8% in Greece
- c) a decrease in total crude oil production of 6.4%, mainly due to lower output in the United Kingdom (-6.9%)
- d) a decrease in natural gas production of 0.6%; among the two major natural gas producers, production increased in the Netherlands by 3.4% while it fell in the United Kingdom by 2.1%
- e) an increase in nuclear energy production of 3.3%

In the Euro-Zone, primary energy production in 2001 for all the above mentioned products showed similar trends as the EU total, except for natural gas where an increase of 0.9% was observed.

In 2001, as in preceding years, the largest share in total primary energy production was that of nuclear energy (31.9%), followed by natural gas (27.5%) and crude oil (21.5%); in 2000 the shares were 30.7%, 27.5% and 22.9% respectively.

SUMMARY ENERGY BALANCE-SHEET (in mio toe)																	
JANUARY - DECEMBER 2000																	
 eurostat	EU-15	Euro-Zone	B	DK	D	EL	E	F	IRL	I	L	NL	A	P	FIN	S	UK
<b>Primary Production (1)</b>	690.2	371.0	12.3	25.4	121.3	8.9	26.4	114.3	1.5	24.2	0.0	55.8	6.5	1.1	7.6	21.1	263.8
<b>Total Imports (2)</b>	1116.9*	964.0*	75.5	15.4	229.9	25.9	107.4	160.2*	12.8	172.3	3.6	134.8	21.6	24.0	21.9	31.3	80.3
<b>Change in Stocks (3)</b>	-2.3*	-4.1*	0.4	0.5	5.8	-0.4	-0.5	-4.1	0.2*	-2.9	-0.1	-2.2	0.0	-0.2	-0.5	0.2	1.5
<b>Total Exports (2)</b>	384.8*	221.6*	24.9	21.8	30.0	4.1	8.6	26.5*	1.3	21.4	0.1	100.2	2.6	1.7	4.2	11.9	125.4
<b>Gross Consumption</b>	1420.1*	1109.2*	63.3	19.5	326.9	30.3	124.7	243.8*	13.2*	172.1	3.5	88.1	25.5	23.1	24.8	40.7	220.3
<b>Bunkers</b>	41.7	33.5	5.0	1.3	2.2	3.5	6.2	3.0	0.1	2.7	-	13.8	-	0.5	-	1.4	2.1
<b>Gross Inland Consumption</b>	1378.3*	1075.7*	58.3	18.2	324.7	26.9	118.6	240.8*	13.2*	169.4	3.5	74.3	25.5	22.6	24.8	39.3	218.2

(1) Including hard coal recovered (2) Including Intra-EU trade (3) + Decrease in stocks - Increase in stocks / \* provisional data




### Energy dependence rate

**Net total imports** increased by 4.0% attaining a level of 761.6 million toe.

Net imports of energy (imports minus exports) as a percentage of gross consumption show national energy dependence. The **energy dependence rate** of the European Union increased from 51.6% in 2000 to 52.4% in 2001, reaching a peak value for recent years. Denmark, which became a net energy exporter for the first time in 1999, confirmed this trend in 2001 with an energy dependence rate of -26.7%. The United Kingdom remains a net energy exporter with an energy dependence rate of -10.1% in 2001, although there has been a major change compared with -20.5% in 2000. All other Member States are net energy importers, including the largest energy consuming Member States Germany (dependence rate 63.9%), France (52.1%), Italy (85.8%) and Spain (77.6%).

### Energy consumption per capita


**Gross Inland Consumption per capita** in the European Union ranged from 5.6 toe/capita in Belgium to 2.2 toe/capita in Portugal in 2001. To a large extent this indicator reflects the level of living standards, space heating needs (weather conditions and geography) and the structure of the industry/economies of the Member States of the European Union. Luxembourg with 8.4 toe/capita constitutes a special case given the share of industrial sectors as well as that of foreign consumers (transport sector).

SUMMARY ENERGY BALANCE-SHEET (in mio toe)																	
JANUARY - DECEMBER 2001																	
	EU-15	Euro-Zone	B	DK	D	EL	E	F	IRL	I	L	NL	A	P	FIN	S	UK
<b>Primary Production (1)</b>	685.7*	380.4*	11.8	24.9	119.3*	9.1	27.9	115.2	1.2	22.7	0.0	57.4	6.4	1.3	8.1	24.9	255.5
<b>Total Imports (2)</b>	1140.7*	1002.4*	74.7	14.4	238.9*	25.9	107.6	156.0*	14.1	169.6	3.8	143.8	22.3	23.4	22.4	29.9	94.1
<b>Change in Stocks (3)</b>	5.9*	3.7*	-0.3	0.0	0.3*	0.1	1.0	4.3	-0.2*	1.6*	0.0	-0.1	0.9	0.0	-0.1	0.3	-1.9
<b>Total Exports (2)</b>	379.1*	230.5*	23.4	19.7	26.9*	3.9	7.3	25.9*	1.5	22.2	0.1	110.1	2.8	1.6	4.8	11.6	117.3
<b>Gross Consumption</b>	1453.3*	1156.0*	62.7	19.7	331.6*	31.3	129.2	249.6*	13.5*	171.7*	3.7	91.0	26.8	23.0	25.7	43.4	230.4
<b>Bunkers</b>	42.6	38.4	5.1	1.1	2.2	3.6	6.9	2.6	-	2.7	-	14.9	-	0.3	-	1.4	1.7
<b>Gross Inland Consumption</b>	1410.7*	1117.6*	57.7	18.6	329.4*	27.7	122.3	247.0*	13.5*	169.0*	3.7	76.1	26.8	22.7	25.7	42.0	228.7

(1) Including hard coal recovered (2) Including Intra-EU trade (3) + Decrease in stocks - Increase in stocks / \* provisional data

## SUBDIVISION OF PRINCIPAL AGGREGATES OF THE ENERGY BALANCE SHEET


*Million tonnes of oil equivalent*

 eurostat	EU-15			Euro-Zone		
	2000	2001	01/00	2000	2001	01/00
<b>1. Gross Inland Consumption</b>	1378.3	1410.7	2.3%	1075.7	1117.6	3.9%
of which:						
Hard coal (1)	162.4*	164.5*	1.3%	120.6*	116.7*	-3.2%
Lignite (1)	46.9	49.6	5.7%	38.7	49.6	28.2%
Crude oil (1)	580.6	593.2	2.2%	467.3	488.6	4.6%
Natural gas	340.1	346.6	1.9%	246.3	254.6	3.4%
Nuclear energy	211.5	218.5*	3.3%	176.1	178.1*	1.1%
Primary electrical energy and others	36.8*	38.3*	4.0%	26.7*	29.9*	12.0%
<b>2. Net Imports (2)</b>	732.1*	761.6*	4.0%	742.4*	771.9*	4.0%
among which:						
Hard coal	101.8	112.7	10.7%	80.6	83.9	4.1%
Crude oil	439.1	448.9	2.2%	454.4	474.7	4.5%
Natural gas	154.3	153.4	-0.6%	164.1	164.0	-0.1%
Petroleum products	17.0	24.7	45.6%	28.8	29.7	3.0%
<b>3. Production of Primary Energy</b>	689.5	685.2*	-0.6%	370.6	380.2*	2.6%
of which:						
Hard coal (3)	51.6	47.1	-8.7%	33.4	27.8	-16.8%
Lignite	46.8	49.2	5.1%	38.6	49.2	27.6%
Crude oil and condensates	157.6	147.4	-6.4%	12.9	12.5	-3.7%
Natural gas	189.5	188.4	-0.6%	85.1	85.9	0.9%
Nuclear energy	211.5	218.5*	3.3%	176.1	178.1*	1.1%
Primary electrical energy and others	33.2	35.0*	5.7%	24.8	26.9*	8.6%
<b>4. <u>Net Imports (2)</u> Gross Consumption</b>						
Total	51.6%*	52.4%*		66.9%*	66.8%*	
among which:						
Petroleum	32.9%*	33.6%*		44.3%*	44.7%*	
<b>5. Gross Inland Consumption Per Capita (in kgoe/capita)</b>	3653.6*	3724.6*		3674.8*	3670.4*	

(1) Including the balance of foreign trade and stock changes of derived products  
(2) Imports minus exports  
(3) Including recovered products  
\* provisional data

## SUBDIVISION OF PRINCIPAL AGGREGATES OF THE ENERGY BALANCE SHEET

*Million tonnes of oil equivalent*

	Belgique/België			Danmark			Deutschland			Ellada			España		
	2000	2001	01/00	2000	2001	01/00	2000	2001	01/00	2000	2001	01/00	2000	2001	01/00
<b>1. Gross Inland Consumption</b>	58.3	57.7	-1.0%	18.2	18.6	2.1%	324.7	329.4	1.4%	26.9	27.7	3.0%	118.6	122.3	3.1%
of which:															
Hard coal (1)	7.8	8.0	2.9%	4.1	4.3	6.0%	45.2	44.1*	-2.3%	0.4	0.5	8.4%	20.7	18.5	-10.7%
Lignite (1)	0.0	0.0	27.3%	-	-	-	35.4	37.0	4.5%	8.2	8.7	5.8%	1.5	1.6	2.3%
Crude oil (1)	23.6	24.1	1.9%	9.3	9.4	0.5%	127.0	130.2	2.6%	16.2	16.4	1.5%	64.1	66.4	3.6%
Natural gas	14.4	13.1	-8.6%	4.4	4.5	4.2%	73.7	73.2	-0.6%	1.7	1.7	-1.7%	14.1	16.4	16.2%
Nuclear energy	11.8	11.4	-3.8%	-	-	-	40.2	41.1*	2.1%	-	-	-	15.1	15.4	2.0%
Primary electrical energy and others	0.7	1.1	55.8%	0.4	0.3	-22.4%	3.3	3.7*	12.7%	0.3	0.4	21.4%	3.0	4.0	33.9%
<b>2. Net Imports (2)</b>	50.6	51.3	1.4%	-6.4	-5.2	-18.1%	199.8	212.0*	6.1%	21.8	22.0	0.8%	98.8	100.3	1.5%
among which:															
Hard coal	6.7	7.4	10.8%	3.8	4.1	8.3%	16.0	21.0	31.5%	0.4	0.4	-4.4%	13.9	12.3	-11.7%
Crude oil	33.9	31.9	-5.8%	-8.4	-7.8	-7.5%	100.5	104.2	3.7%	19.4	18.9	-2.4%	57.5	56.8	-1.2%
Natural gas	14.3	13.1	-8.3%	-2.8	-3.0	6.4%	56.9	58.3	2.5%	1.7	1.7	-1.6%	13.9	15.2	9.3%
Petroleum products	-5.2	-3.9	-26.3%	0.6	1.2	96.2%	23.2	24.8	6.9%	-0.7	-0.4	-44.6%	12.2	15.0	22.8%
<b>3. Production of Primary Energy</b>	12.2	11.7	-3.6%	25.4	24.9	-2.0%	121.3	119.3*	-1.6%	8.9	9.1	2.7%	26.4	27.9	5.6%
of which:															
Hard coal (3)	0.1	0.1	-41.3%	-	-	-	24.3	19.9	-17.9%	-	-	-	6.8	6.4	-5.2%
Lignite	-	-	-	-	-	-	35.3	36.7	3.9%	8.2	8.7	5.8%	1.5	1.6	2.3%
Crude oil and condensates	-	-	-	17.8	17.1	-4.0%	3.1	3.3	4.3%	0.3	0.2	-31.5%	0.2	0.4	46.4%
Natural gas	-	-	-	7.2	7.4	2.8%	15.3	15.3	0.4%	0.0	0.0	-5.0%	0.2	0.5	
Nuclear energy	11.8	11.4	-3.8%	-	-	-	40.2	41.1*	2.1%	-	-	-	15.1	15.4	2.0%
Primary electrical energy and others	0.4	0.4	0.0%	0.4	0.4	1.2%	3.0	3.0*	-1.5%	0.3	0.2	-47.7%	2.6	3.7	42.0%
<b>4. Net Imports (2)</b>															
<b>Gross Consumption</b>															
Total	80.0%	81.7%		-32.9%	-26.7%		61.1%	63.9%*		72.0%	70.4%		79.2%	77.6%	
among which:															
Petroleum	45.3%	46.8%		-38.4%	-32.3%		37.8%	38.9%*		65.0%	63.0%		56.9%	56.4%	
<b>5. Gross Inland Consumption Per Capita (in kgoe/capita)</b>	5682.8	5606.2		3406.9	3465.3		3950.0	4000.0*		2546.7	2616.7		2969.4	3036.8	

(1) Including the balance of foreign trade and stock changes of derived products


(2) Imports minus exports

(3) Including recovered products

\* provisional data

## SUBDIVISION OF PRINCIPAL AGGREGATES OF THE ENERGY BALANCE SHEET

*Million tonnes of oil equivalent*

 eurostat	France			Ireland			Italia			Luxembourg			Nederland		
	2000	2001	01/00	2000	2001	01/00	2000	2001	01/00	2000	2001	01/00	2000	2001	01/00
<b>1. Gross Inland Consumption</b>	240.8	247.0	2.6%	13.2	13.5	2.8%	169.4	169.0	-0.3%	3.5	3.7	5.1%	74.3	76.1	2.4%
of which:															
Hard coal (1)	12.8	11.4	-10.5%	2.0*	2.5*	23.7%	13.4	13.5*	0.6%	0.1	0.2	25.0%	9.1	9.4	3.3%
Lignite (1)	0.1	0.1	17.6%	0.5	0.4	-12.0%	0.0	-	-	-	-	-	-	-	-
Crude oil (1)	89.4	91.5	2.4%	7.3	6.8	-6.3%	88.0	86.4	-1.8%	2.2	2.4	6.5%	27.9	29.0	3.8%
Natural gas	36.0	39.4	9.4%	3.3	3.7	13.0%	57.8	58.3	0.9%	0.7	0.8	14.5%	34.3	34.9	1.6%
Nuclear energy	102.5	103.7	1.2%	-	-	-	-	-	-	-	-	-	1.0	1.0	1.3%
Primary electrical energy and others	0.0*	0.8*		0.1	0.1	-27.7%	10.2	10.8	5.8%	0.5	0.4	-18.0%	2.0	1.8	-7.2%
<b>2. Net Imports (2)</b>	133.6*	130.2*	-2.6%	11.5	12.5	8.9%	150.9	147.4	-2.3%	3.6	3.7	2.7%	34.6	33.6	-2.7%
among which:															
Hard coal	11.0	9.2	-16.0%	2.0	2.5	23.6%	12.9	13.2	2.7%	0.1	0.2	25.0%	9.1	9.8	7.1%
Crude oil	84.9	84.9	0.0%	3.2	3.3	1.7%	83.7	82.6	-1.2%	-	-	-	60.4	60.5	0.1%
Natural gas	36.1	34.9	-3.4%	2.3	3.1	31.2%	46.8	44.8	-4.3%	0.7	0.8	14.5%	-17.7	-18.9	6.9%
Petroleum products	8.5	7.3	-14.3%	3.9	3.7	-4.3%	-2.9	-5.7	98.3%	2.3	2.3	2.6%	-18.7	-18.8	0.6%
<b>3. Production of Primary Energy</b>	114.1	115.0	0.9%	1.5	1.2	-23.3%	24.2	22.7	-6.0%	0.0	0.0	-10.6%	55.8	57.4	3.0%
of which:															
Hard coal (3)	2.2	1.4	-38.1%	-	-	-	-	-	-	-	-	-	-	-	-
Lignite	0.1	0.1	9.1%	0.5	0.4	-12.0%	0.0	-	-	-	-	-	-	-	-
Crude oil and condensates	2.1	1.9	-7.6%	-	-	-	4.1	3.4	-17.0%	-	-	-	2.4	2.3	-3.7%
Natural gas	1.4	1.4	-3.0%	1.0	0.7	-31.4%	13.7	12.7	-7.2%	-	-	-	52.1	53.8	3.4%
Nuclear energy	102.5	103.7	1.2%	-	-	-	-	-	-	-	-	-	1.0	1.0	1.3%
Primary electrical energy and others	6.0	6.7	11.6%	0.1	0.1	10.5%	6.4	6.6	3.8%	0.0	0.0	-10.6%	0.4	0.4	-1.2%
<b>4. Net Imports (2)</b>															
<b>Gross Consumption</b>															
Total	54.8%*	52.1%*		86.8%*	92.5%*		87.7%	85.8%*		100.0%	98.5%		39.3%	37.0%	
among which:															
Petroleum	37.7%*	36.6%*		53.7%*	51.5%*		50.6%	49.4%*		64.5%	63.0%		47.3%	45.7%	
<b>5. Gross Inland Consumption Per Capita (in kgoe/capita)</b>	4088.9*	4172.9*		3464.4*	3510.6*		2933.4	2917.0*		8059.5	8373.0		4666.4	4741.9	

(1) Including the balance of foreign trade and stock changes of derived products


(2) Imports minus exports

(3) Including recovered products

\* provisional data

## SUBDIVISION OF PRINCIPAL AGGREGATES OF THE ENERGY BALANCE SHEET

*Million tonnes of oil equivalent*

 eurostat	Österreich			Portugal			Suomi/Finland			Sverige			United Kingdom		
	2000	2001	01/00	2000	2001	01/00	2000	2001	01/00	2000	2001	01/00	2000	2001	01/00
<b>1. Gross Inland Consumption</b>	25.5	26.8	4.9%	22.6	22.7	0.5%	24.8	25.7	3.5%	39.3	42.0	6.7%	218.2	228.7	4.8%
of which:															
Hard coal (1)	3.2	2.8	-14.5%	4.0	3.3	-18.7%	2.3	2.7	18.0%	2.2	2.5	9.5%	35.1	41.0	17.1%
Lignite (1)	0.3	0.4	28.6%	-	-	-	0.8	1.3	65.2%	-	-	-	-	-	-
Crude oil (1)	12.0	12.9	7.8%	15.4	15.9	3.5%	10.5	10.4	-1.0%	14.9	14.5	-2.3%	72.9	76.8	5.4%
Natural gas	6.4	7.1	10.8%	2.1	2.3	7.4%	3.4	3.7	7.3%	0.7	0.8	9.7%	87.1	86.7	-0.4%
Nuclear energy	-	-	-	-	-	-	5.6	5.7	1.3%	14.3	18.0	25.8%	21.1	22.3	5.9%
Primary electrical energy and others	3.5	3.5	-0.3%	1.1	1.3	14.9%	2.3	2.0	-11.4%	7.2	6.2	-13.6%	2.1	1.8	-16.0%
<b>2. Net Imports (2)</b>	19.0	19.5	2.5%	22.2	21.7	-2.2%	17.7	17.6	-0.3%	19.4	18.2	-6.1%	-45.1	-23.2	-48.6%
among which:															
Hard coal	2.5	2.2	-13.8%	4.1	3.1	-24.5%	2.2	2.6	16.7%	2.0	1.9	-4.2%	14.9	22.7	52.8%
Crude oil	7.2	7.9	10.9%	11.7	12.3	5.3%	11.6	11.2	-2.8%	20.9	20.0	-4.7%	-47.3	-37.9	-19.7%
Natural gas	5.2	5.1	-0.7%	2.1	2.3	6.9%	3.4	3.7	7.3%	0.7	0.8	9.7%	-9.3	-8.3	-10.4%
Petroleum products	3.0	3.1	4.0%	3.3	3.1	-5.0%	-0.6	-0.8	32.1%	-4.5	-3.5	-21.6%	-7.2	-2.7	-63.4%
<b>3. Production of Primary Energy</b>	6.5	6.4	-2.3%	1.1	1.3	21.6%	7.6	8.1	6.5%	21.1	24.9	17.7%	263.5	255.2	-3.1%
of which:															
Hard coal (3)	-	-	-	-	-	-	-	-	-	-	-	-	18.2	19.3	6.2%
Lignite	0.3	0.4	6.7%	-	-	-	0.8	1.3	65.2%	-	-	-	-	-	-
Crude oil and condensates	1.0	1.1	3.3%	-	-	-	-	-	-	-	-	-	126.6	117.9	-6.9%
Natural gas	1.5	1.5	-4.1%	-	-	-	-	-	-	-	-	-	97.1	95.1	-2.1%
Nuclear energy	-	-	-	-	-	-	5.6	5.7	1.3%	14.3	18.0	25.8%	21.1	22.3	5.9%
Primary electrical energy and others	3.6	3.5	-3.9%	1.1	1.3	21.6%	1.3	1.2	-7.5%	6.8	6.8	0.8%	0.9	0.9	-1.2%
<b>4. Net Imports (2)</b>															
<b>Gross Consumption</b>															
Total	74.6%	73.0%		96.3%	94.4%		71.2%	68.6%		47.7%	42.0%		-20.5%	-10.1%	
among which:															
Petroleum	42.1%	43.2%		69.0%	71.0%		44.1%	40.6%		39.4%	36.9%		-23.5%	-16.6%	
<b>5. Gross Inland Consumption Per Capita (in kgoe/capita)</b>	3145.7	3290.6		2208.5	2219.9*		4790.2	4948.6		4434.0	4719.8		3651.3	3811.1	

(1) Including the balance of foreign trade and stock changes of derived products

(2) Imports minus exports

(3) Including recovered products

\* provisional data

# Further information:

## ➤ Databases

New Cronos, Theme 8: Environment and Energy, Domain Sirene: Energy

To obtain information or to order publications, databases and special sets of data, please contact the **Data Shop** network:

BELGIQUE/BELGIË	DANMARK	DEUTSCHLAND	ESPAÑA	FRANCE	ITALIA – Roma
<b>Eurostat Data Shop</b> Bruxelles/Brussel Planistat Belgique Rue du Commerce 124 Handelsstraat 124 B-1000 BRUXELLES / BRUSSEL Tel. (32-2) 234 67 50 Fax (32-2) 234 67 51 E-mail: datashop@planistat.be URL: http://www.datashop.org/	<b>DANMARKS STATISTIK</b> Bibliotek og Information Eurostat Data Shop Sejrogade 11 DK-2100 KØBENHAVN Ø Tlf. (45) 39 17 30 30 Fax (45) 39 17 30 03 E-mail: <a href="mailto:hb@dst.dk">hb@dst.dk</a> URL: http://www.dst.dk/bibliotek	<b>STATISTISCHES BUNDESAMT</b> Eurostat Data Shop Berlin Otto-Braun-Straße 70-72 (Eingang: Karl-Marx-Allee) D-10178 BERLIN Tel. (49) 1888 644 94 27/28 Fax (49) 1888-644 94 30 E-Mail: datashop@destatis.de URL: http://www.eu-datashop.de/	<b>INE Eurostat Data Shop</b> Paseo de la Castellana, 183 Despacho 011B Entrada por Estébanez Calderón E-28046 MADRID Tel. (34-91) 583 91 67/ 583 95 00 Fax (34-91) 583 03 57 E-mail: datashop.eurostat@ine.es URL: http://www.datashop.org/	<b>INSEE Info Service</b> Eurostat Data Shop 195, rue de Bercy Tour Gamma A F-75582 PARIS CEDEX 12 Tél. (33-1) 53 17 88 44 Fax (33-1) 53 17 88 22 E-mail: datashop@insee.fr	<b>ISTAT</b> Centro di Informazione Statistica Sede di Roma, Eurostat Data Shop Via Cesare Balbo, 11a I-00184 ROMA Tel. (39-06) 46 73 31 02/06 Fax (39-06) 46 73 31 01/07 E-mail: dipdiff@istat.it
ITALIA – Milano	LUXEMBOURG	NEDERLAND	NORGE	PORTUGAL	SCHWEIZ/SUISSE/SVIZZERA
<b>ISTAT</b> Ufficio Regionale per la Lombardia Eurostat Data Shop Via Fieno 3 I-20123 MILANO Tel. (39-02) 80 61 32 460 Fax (39-02) 80 61 32 304 E-mail: mleuro@tin.it	<b>Eurostat Data Shop Luxembourg</b> 46A, avenue J.F. Kennedy BP 1452 L-1014 LUXEMBOURG Tél. (352) 43 35-2251 Fax (352) 43 35-22221 E-mail: dslux@eurostat.datashop.lu URL: http://www.datashop.org/	<b>STATISTICS NETHERLANDS</b> Eurostat Data Shop-Voorburg Postbus 4000 2270 JM VOORBURG Nederland Tel. (31-70) 337 49 00 Fax (31-70) 337 59 84 E-mail: datashop@cbs.nl	<b>Statistics Norway</b> Library and Information Centre Eurostat Data Shop Kongens gate 6 Boks 8131 Dep. N-0033 OSLO Tel. (47) 21 09 46 42/43 Fax (47) 21 09 45 04 E-mail: Datashop@ssb.no	<b>Eurostat Data Shop Lisboa</b> INE/Serviço de Difusão Av. António José de Almeida, 2 P-1000-043 LISBOA Tel. (351-21) 842 61 00 Fax (351-21) 842 63 64 E-mail: data.shop@ine.pt	<b>Statistisches Amt des Kantons</b> Zürich, Eurostat Data Shop Bleicherweg 5 CH-8090 Zürich Tel. (41-1)225 12 12 Fax (41-1)225 12 99 E-mail: datashop@statistik.zh.ch URL: http://www.statistik.zh.ch
SUOMI/FINLAND	SVERIGE	UNITED KINGDOM	UNITED STATES OF AMERICA		
<b>STATISTICS FINLAND</b> Eurostat Data Shop Helsinki Tilastokirjasto PL 2B FIN-00022 Tilastokeskus Työpajakatu 13 B, 2.Kerros, Helsinki P. (358-9) 17 34 22 21 F. (358-9) 17 34 22 79 Sähköposti: datashop@stat.fi URL: http://www.tilastokeskus.fi/ttk/kk/datashop/	<b>STATISTICS SWEDEN</b> Information service Eurostat Data Shop Karlavägen 100 - Box 24 300 S-104 51 STOCKHOLM Tfn (46-8) 50 69 48 01 Fax (46-8) 50 69 48 99 E-post: infoservice@scb.se URL: http://www.scb.se/tjanster/datashop/datashop.asp	<b>Eurostat Data Shop</b> Office for National Statistics Room 1.015 Cardiff Road Newport South Wales NP10 8XG United Kingdom Tel. (44-1633) 81 33 69 Fax (44-1633) 81 33 33 E-mail: eurostat.datashop@ons.gov.uk	<b>HAVER ANALYTICS</b> Eurostat Data Shop 60 East 42nd Street Suite 3310 NEW YORK, NY 10165 USA Tel. (1-212) 986 93 00 Fax (1-212) 986 69 81 E-mail: eurodata@haver.com		

Media Support Eurostat (for professional journalists only):

Bech Building Office A4/017 • L-2920 Luxembourg • Tel. (352) 4301 33408 • Fax (352) 4301 35349 • e-mail: eurostat-mediasupport@cec.eu.int

## For information on methodology

GIKAS Antigone, Eurostat/D4, L-2920 Luxembourg, Tel. (352) 4301 34374, Fax (352) 4301 32839, E-mail: antigone.gikas@cec.eu.int

ORIGINAL: English

Please visit our web site at [www.europa.eu.int/comm/eurostat/](http://www.europa.eu.int/comm/eurostat/) for further information!

A list of worldwide sales outlets is available at the **Office for Official Publications of the European Communities**.

2 rue Mercier – L-2985 Luxembourg  
Tel. (352) 2929 42118 Fax (352) 2929 42709  
URL: <http://publications.eu.int>  
E-mail: info-info-opoce@cec.eu.int

BELGIQUE/BELGIË – DANMARK – DEUTSCHLAND – GREECE/ELLADA – ESPAÑA – FRANCE – IRELAND – ITALIA – LUXEMBOURG – NEDERLAND – ÖSTERREICH  
PORTUGAL – SUOMI/FINLAND – SVERIGE – UNITED KINGDOM – ÍSLAND – NORGE – SCHWEIZ/SUISSE/SVIZZERA – BALGARIJA – ČESKÁ REPUBLIKA – CYPRUS  
EESTI – HRVATSKA – MAGYARORSZÁG – MALTA – POLSKA – ROMÂNIA – RUSSIA – SLOVAKIA – SLOVENIA – TÜRKIYE – AUSTRALIA – CANADA – EGYPT – INDIA  
ISRAËL – JAPAN – MALAYSIA – PHILIPPINES – SOUTH KOREA – THAILAND – UNITED STATES OF AMERICA

## Order form

I would like to subscribe to Statistics in focus (from 1.1.2002 to 31.12.2002):  
(for the Data Shop and sales office addresses see above)

**Formula 1:** All 9 themes (approximately 180 issues)

Paper: EUR 360

Language required:  DE  EN  FR

**Formula 2:** One or more of the following nine themes:

Theme 1 'General statistics'

Theme 6 'External trade'

Theme 7 'Transport'

Theme 9 'Science and technology'

Paper: EUR 42

Theme 2 'Economy and finance'

Theme 3 'Population and social conditions'

Theme 4 'Industry, trade and services'

Theme 5 'Agriculture and fisheries'

Theme 8 'Environment and energy'

Paper: EUR 84

Language required:  DE  EN  FR

Statistics in focus can be downloaded (pdf file) free of charge from the Eurostat web site. You only need to register. For other solutions, contact your Data Shop.

Please send me a free copy of 'Eurostat mini-guide' (catalogue containing a selection of Eurostat products and services)

Language required:  DE  EN  FR

I would like a free subscription to 'Statistical References', the information letter on Eurostat products and services

Language required:  DE  EN  FR

Mr  Mrs  Ms

(Please use block capitals)

Surname: \_\_\_\_\_ Forename: \_\_\_\_\_

Company: \_\_\_\_\_ Department: \_\_\_\_\_

Function: \_\_\_\_\_

Address: \_\_\_\_\_

Post code: \_\_\_\_\_ Town: \_\_\_\_\_

Country: \_\_\_\_\_

Tel.: \_\_\_\_\_ Fax: \_\_\_\_\_

E-mail: \_\_\_\_\_

**Payment on receipt of invoice, preferably by:**

Bank transfer

Visa  Eurocard

Card No: \_\_\_\_\_ Expires on: \_\_\_\_/\_\_\_\_/\_\_\_\_

**Please confirm your intra-Community VAT number:**

If no number is entered, VAT will be automatically applied. Subsequent reimbursement will not be possible.