

Contents

Production index for the main industrial groupings and total industry (excluding construction) 2

Production index for the main industrial groupings (MIGs) 3

Production index for 2-digit NACE activities in the EU 5

Production index for the three largest NACE Divisions within total industry (excluding construction) 6

Latest developments for the production index of total industry (excluding construction)

during the third quarter of 2001

Carmen Lipp-Lingua

EU-15 industrial output (excluding construction) fell by 0.3% in both the EU and the euro-zone in the third quarter of 2001 when compared to the quarter before. This marked the third successive quarter of decline for the EU's production index, following losses of 0.6% (0.4% in the euro-zone) and 1.1% (0.9%) in the first and second quarters.

In terms of a comparison with the same quarter of a year before, EU-15 industrial production fell by 0.9% in the third quarter of 2001, whilst the decline in the euro-zone was less marked, 0.5%.

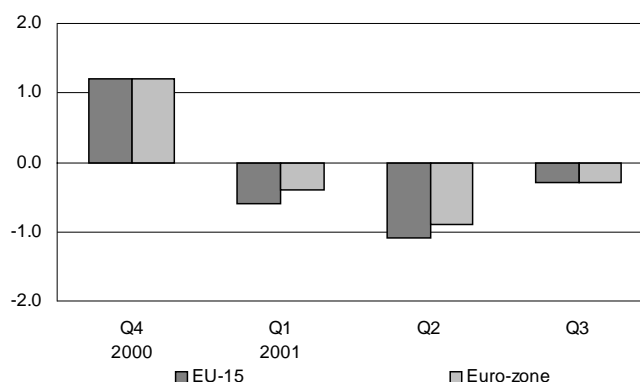


Figure 1: Production index for total industry (excluding construction), seasonally adjusted data, growth rates, compared to the previous quarter (%)

| Quarter on quarter growth rates, seasonally adjusted data | | | | Year on year growth rates, working day adjusted data | | | |
|---|------|-----------|------|--|------|-----------|------|
| EU-15 | | Euro-zone | | EU-15 | | Euro-zone | |
| Q4-00 | 1.2 | Q4-00 | 1.2 | Q4-00 | 4.7 | Q4-00 | 5.2 |
| Q1-01 | -0.6 | Q1-01 | -0.4 | Q1-01 | 3.8 | Q1-01 | 4.2 |
| Q2-01 | -1.1 | Q2-01 | -0.9 | Q2-01 | 0.4 | Q2-01 | 0.9 |
| Q3-01 | -0.3 | Q3-01 | -0.3 | Q3-01 | -0.9 | Q3-01 | -0.5 |

Table 1: Production index for total industry (excluding construction), growth rates (%)



¹ Euro-zone data up to the end of 2000 cover eleven Member States (B, D, E, F, IRL, I, L, NL, A, P and FIN); with Greece's entry into the euro-zone from the beginning of 2001, they cover twelve Member States. The euro-zone is treated as an entity regardless of its composition. For an explanation of how growth rates for the euro-zone have been computed, please refer to page 7, methodological notes.

Production index for the main industrial groupings and total industry (excluding construction)

The data presented in table 2 show that part of the reason for the decline in the EU's industrial production was the performance of the consumer durable industries. Output of consumer durables declined by 1.5% in the EU and by 1.6% in the euro-zone in the third quarter of 2001 (compared to the second quarter). These figures were in keeping with those recorded in the two previous quarters when the production of consumer durables fell by between 1.5% and 1.9%. EU production growth was recorded in the third quarter for energy, capital and consumer non-durable industries (again compared to Q2-2001) - maintaining the positive rates recorded in the second quarter for energy and consumer durables and reversing the large decline previously recorded in the capital goods industries.

| | | Quarter on quarter growth rates, seasonally adjusted data | | | | | | Year on year growth rates, working day adjusted data | | | | | |
|---|-----------|--|-------|-------|-------|-------|-------|---|-------|-------|-------|-------|-------|
| | | Q2-00 | Q3-00 | Q4-00 | Q1-01 | Q2-01 | Q3-01 | Q2-00 | Q3-00 | Q4-00 | Q1-01 | Q2-01 | Q3-01 |
| Total industry (excluding construction) | EU-15 | 2.3 | 1.0 | 1.2 | -0.6 | -1.1 | -0.3 | 5.8 | 5.3 | 4.7 | 3.8 | 0.4 | -0.9 |
| | Euro-zone | 2.3 | 1.1 | 1.2 | -0.4 | -0.9 | -0.3 | 6.2 | 5.9 | 5.2 | 4.2 | 0.9 | -0.5 |
| Total industry (excluding energy & construction) | EU-15 | 2.2 | 1.4 | 0.7 | -0.3 | -1.5 | 0.0 | 6.0 | 5.6 | 5.2 | 4.1 | 0.2 | -1.2 |
| | Euro-zone | 2.3 | 1.5 | 0.6 | -0.2 | -1.3 | 0.1 | 6.3 | 6.2 | 5.5 | 4.4 | 0.5 | -0.8 |
| Energy | EU-15 | -0.9 | 0.3 | -1.6 | 0.3 | 0.9 | 0.4 | 2.1 | 1.4 | -0.7 | -1.7 | -0.1 | 0.0 |
| | Euro-zone | -2.1 | 0.6 | -0.7 | 0.2 | 0.3 | 0.1 | 1.9 | 2.5 | 0.0 | -1.7 | 1.1 | 0.7 |
| Intermediate goods | EU-15 | 1.7 | 1.4 | 0.3 | -1.2 | -1.2 | -0.4 | 6.2 | 5.6 | 5.0 | 2.1 | -0.8 | -2.5 |
| | Euro-zone | 1.5 | 1.7 | 0.8 | -1.2 | -1.4 | 0.0 | 6.3 | 6.0 | 5.2 | 2.8 | -0.2 | -1.9 |
| Capital goods | EU-15 | 2.3 | 2.7 | 1.4 | 1.3 | -4.1 | 1.1 | 7.9 | 8.9 | 8.6 | 8.1 | 1.3 | -0.6 |
| | Euro-zone | 2.2 | 2.9 | 1.0 | 1.6 | -3.8 | 1.3 | 8.5 | 9.7 | 8.9 | 8.1 | 1.8 | 0.0 |
| Consumer durables | EU-15 | 2.8 | -0.2 | 1.5 | -1.7 | -1.5 | -1.5 | 8.2 | 5.1 | 4.2 | 2.5 | -1.8 | -3.5 |
| | Euro-zone | 3.2 | 0.0 | 1.6 | -1.9 | -1.6 | -1.6 | 8.3 | 5.3 | 4.4 | 2.9 | -1.9 | -3.8 |
| Consumer non-durables | EU-15 | 2.4 | 0.3 | 0.8 | -0.7 | 0.5 | 0.5 | 2.9 | 1.5 | 1.4 | 2.9 | 0.8 | 1.0 |
| | Euro-zone | 2.6 | 0.5 | 0.8 | -0.9 | 0.5 | 0.5 | 3.1 | 2.0 | 1.7 | 3.0 | 0.8 | 0.9 |

Table 2: Production index for the MIGs, growth rates (%)

Compared to the same quarter of a year before, industrial output was more than 3% lower in Finland and the United Kingdom in the third quarter of 2001. Negative rates between -1% and -3% were recorded in Belgium, Sweden (2nd quarter), Germany and Italy. However, there was growth of more than 1% in Luxembourg (2nd quarter), Ireland, Portugal and France.

| | Quarter on quarter growth rates, seasonally adjusted data | | | | | | Year on year growth rates, working day adjusted data | | | | | |
|-----------|--|-------|-------|-------|-------|-------|---|-------|-------|-------|-------|-------|
| | Q2-00 | Q3-00 | Q4-00 | Q1-01 | Q2-01 | Q3-01 | Q2-00 | Q3-00 | Q4-00 | Q1-01 | Q2-01 | Q3-01 |
| EU-15 | 2.3 | 1.0 | 1.2 | -0.6 | -1.1 | -0.3 | 5.8 | 5.3 | 4.7 | 3.8 | 0.4 | -0.9 |
| Euro-zone | 2.3 | 1.1 | 1.2 | -0.4 | -0.9 | -0.3 | 6.2 | 5.9 | 5.2 | 4.2 | 0.9 | -0.5 |
| B | 2.2 | -0.2 | 2.4 | 1.0 | -4.0 | -1.4 | 6.3 | 4.5 | 5.6 | 5.3 | -1.1 | -2.4 |
| DK | 3.2 | 1.4 | 0.9 | -0.4 | -1.0 | 1.3 | 7.8 | 8.0 | 6.2 | 5.2 | 0.9 | 0.8 |
| D | 2.6 | 2.3 | -0.3 | 1.1 | -1.7 | -0.5 | 6.8 | 7.2 | 5.9 | 5.5 | 1.4 | -1.6 |
| EL | -0.2 | -2.2 | 2.8 | -0.8 | 0.1 | : | 5.9 | 0.0 | 6.8 | -0.4 | -0.1 | : |
| E | 0.7 | -0.2 | -0.5 | -0.7 | 0.2 | 0.6 | 5.8 | 3.5 | 2.0 | -0.7 | -1.1 | -0.4 |
| F | 0.6 | 1.1 | 0.5 | 0.2 | -0.1 | 0.6 | 3.1 | 3.7 | 2.6 | 2.1 | 1.8 | 1.5 |
| IRL | 16.0 | 0.7 | 9.9 | 2.7 | -1.1 | -8.8 | 20.9 | 14.7 | 20.0 | 31.4 | 12.4 | 1.9 |
| I | 1.8 | 0.1 | 0.9 | -0.3 | -1.5 | -0.2 | 6.5 | 5.2 | 5.0 | 2.8 | -0.8 | -1.2 |
| L | 1.0 | 0.2 | 0.1 | 4.7 | -2.8 | : | 7.2 | 1.4 | 1.6 | 6.4 | 2.1 | : |
| NL | 1.4 | 0.3 | 1.5 | -1.7 | 0.8 | -0.6 | 4.8 | 3.7 | 4.1 | 1.2 | 0.6 | -0.1 |
| A | 3.8 | 0.0 | 1.9 | -0.1 | -2.4 | : | 10.5 | 8.3 | 6.6 | 5.8 | -0.9 | : |
| P | -0.7 | 3.7 | 0.7 | -1.1 | 2.1 | 0.1 | -1.9 | 2.7 | 1.9 | 2.4 | 5.2 | 1.9 |
| FIN | 5.5 | 1.4 | 3.0 | -2.9 | -4.5 | 1.3 | 9.2 | 12.4 | 14.2 | 7.2 | -2.2 | -3.3 |
| S | 3.5 | -0.3 | 3.0 | -1.2 | -3.4 | : | 9.1 | 9.3 | 8.1 | 5.5 | -2.3 | : |
| UK | 1.6 | 0.6 | -0.7 | -0.6 | -1.1 | -0.6 | 2.8 | 1.0 | 1.3 | 1.4 | -1.8 | -3.2 |

Table 3: Production index for total industry (excluding construction), growth rates (%)

Production index for the main industrial groupings (MIGs)

| | Quarter on quarter growth rates, seasonally adjusted data | | | | | | Year on year growth rates, working day adjusted data | | | | | |
|-----------|--|-------|-------|-------|-------|-------|---|-------|-------|-------|-------|-------|
| | Q2-00 | Q3-00 | Q4-00 | Q1-01 | Q2-01 | Q3-01 | Q2-00 | Q3-00 | Q4-00 | Q1-01 | Q2-01 | Q3-01 |
| EU-15 | 2.2 | 1.4 | 0.7 | -0.3 | -1.5 | 0.0 | 6.0 | 5.6 | 5.2 | 4.1 | 0.2 | -1.2 |
| Euro-zone | 2.3 | 1.5 | 0.6 | -0.2 | -1.3 | 0.1 | 6.3 | 6.2 | 5.5 | 4.4 | 0.5 | -0.8 |
| B | 2.6 | 0.8 | 3.6 | 0.3 | -4.8 | -0.3 | 8.0 | 5.7 | 7.5 | 7.4 | -0.3 | -1.5 |
| DK | 3.5 | 0.7 | 1.8 | -0.8 | -0.7 | 0.6 | 7.8 | 7.9 | 6.2 | 5.3 | 1.0 | 0.9 |
| D | 3.0 | 2.0 | 0.3 | 1.0 | -1.7 | -0.8 | 7.6 | 7.6 | 6.6 | 6.7 | 1.5 | -1.5 |
| EL | : | : | : | : | : | : | : | : | : | : | : | : |
| E | 0.9 | -0.5 | 0.3 | -1.5 | 0.0 | 0.0 | 4.8 | 3.5 | 2.2 | -0.7 | -1.5 | -1.3 |
| F | 0.7 | 1.1 | 0.8 | 0.1 | -0.3 | 0.3 | 3.0 | 3.8 | 3.1 | 2.5 | 1.9 | 1.4 |
| IRL | : | : | : | : | : | : | : | : | : | : | : | : |
| I | 3.1 | 0.5 | 1.7 | -1.9 | -1.3 | 0.1 | 6.8 | 5.7 | 5.8 | 3.3 | -0.9 | -1.5 |
| L | 1.7 | -0.5 | 0.0 | 5.6 | -2.5 | -2.3 | 7.3 | 0.7 | 1.7 | 6.9 | 2.5 | 0.6 |
| NL | 2.3 | 0.3 | 1.6 | -2.7 | 0.6 | -1.7 | 5.6 | 4.5 | 5.0 | 1.4 | -0.3 | -2.3 |
| A | 4.2 | -0.6 | 2.9 | -0.3 | -3.7 | : | 12.0 | 9.5 | 7.3 | 6.4 | -1.7 | : |
| P | -0.1 | 1.7 | 0.3 | 0.3 | 1.0 | -0.1 | -0.7 | 3.0 | 1.5 | 1.2 | 4.0 | 1.5 |
| FIN | 4.4 | 3.2 | 2.9 | -3.6 | -4.6 | 1.7 | 8.9 | 12.9 | 15.1 | 7.0 | -2.9 | -4.0 |
| S | 4.9 | 0.0 | 1.1 | -0.6 | -2.8 | : | 10.8 | 9.2 | 8.9 | 5.6 | -2.4 | : |
| UK | 1.0 | 0.7 | 0.7 | -0.8 | -2.1 | -1.2 | 2.5 | 1.2 | 2.2 | 1.6 | -1.7 | -3.6 |

Table 4: Production index for total industry (excluding energy & construction), growth rates (%)

| | Quarter on quarter growth rates, seasonally adjusted data | | | | | | Year on year growth rates, working day adjusted data | | | | | |
|-----------|--|-------|-------|-------|-------|-------|---|-------|-------|-------|-------|-------|
| | Q2-00 | Q3-00 | Q4-00 | Q1-01 | Q2-01 | Q3-01 | Q2-00 | Q3-00 | Q4-00 | Q1-01 | Q2-01 | Q3-01 |
| EU-15 | -0.9 | 0.3 | -1.6 | 0.3 | 0.9 | 0.4 | 2.1 | 1.4 | -0.7 | -1.7 | -0.1 | 0.0 |
| Euro-zone | -2.1 | 0.6 | -0.7 | 0.2 | 0.3 | 0.1 | 1.9 | 2.5 | 0.0 | -1.7 | 1.1 | 0.7 |
| B | -0.6 | -0.5 | -1.1 | -1.0 | -1.2 | -1.3 | -3.4 | 0.1 | -3.3 | -3.7 | -4.0 | -4.2 |
| DK | : | : | : | : | : | : | : | : | : | : | : | : |
| D | -2.5 | 2.8 | -3.3 | -3.4 | 4.1 | -0.3 | -2.1 | 2.1 | -1.5 | -6.6 | 0.1 | -3.0 |
| EL | -3.1 | 4.1 | -1.0 | -4.1 | 2.3 | : | -8.7 | -20.8 | 6.1 | -4.4 | 1.1 | : |
| E | -0.6 | 0.0 | -1.4 | 1.5 | 1.5 | 2.5 | 10.7 | 4.6 | 1.8 | -0.6 | 1.5 | 4.1 |
| F | 0.0 | 0.5 | -0.8 | 0.6 | 0.8 | 2.1 | 4.1 | 3.7 | 0.5 | 0.3 | 1.1 | 3.0 |
| IRL | 1.6 | 5.6 | -2.0 | 0.9 | 6.6 | : | 5.4 | 10.1 | 2.8 | 5.8 | 11.2 | : |
| I | 0.7 | -0.5 | -0.9 | 0.4 | 0.3 | 0.5 | 4.7 | 2.6 | 0.1 | -0.4 | -0.7 | 0.4 |
| L | 0.5 | 2.1 | -1.8 | -0.2 | -4.1 | : | 4.9 | 15.2 | 0.5 | -0.3 | -4.7 | : |
| NL | -1.9 | -0.6 | 0.0 | 3.7 | 0.5 | 2.7 | 0.7 | -0.5 | 0.8 | 1.1 | 4.5 | 9.3 |
| A | -1.0 | -1.8 | 5.0 | 0.0 | 1.8 | : | 0.4 | 0.4 | 2.8 | 2.2 | 5.2 | : |
| P | -0.7 | 4.6 | 2.9 | 1.6 | 2.8 | -4.1 | -8.7 | 0.5 | 4.2 | 8.5 | 12.5 | 3.0 |
| FIN | -0.2 | -1.9 | 3.6 | 5.2 | 0.6 | -3.1 | 0.1 | -5.5 | -0.5 | 7.9 | 6.7 | 5.8 |
| S | -5.9 | 14.1 | -6.4 | 0.2 | -9.2 | : | -2.8 | 10.7 | 0.0 | 0.5 | -2.7 | : |
| UK | 1.8 | -1.7 | -2.6 | 0.8 | -0.1 | -0.1 | 3.6 | -0.7 | -3.1 | -1.8 | -3.4 | -1.9 |

Table 5: Production index for energy, growth rates (%)

| | Quarter on quarter growth rates, seasonally adjusted data | | | | | | Year on year growth rates, working day adjusted data | | | | | |
|-----------|--|-------|-------|-------|-------|-------|---|-------|-------|-------|-------|-------|
| | Q2-00 | Q3-00 | Q4-00 | Q1-01 | Q2-01 | Q3-01 | Q2-00 | Q3-00 | Q4-00 | Q1-01 | Q2-01 | Q3-01 |
| EU-15 | 1.7 | 1.4 | 0.3 | -1.2 | -1.2 | -0.4 | 6.2 | 5.6 | 5.0 | 2.1 | -0.8 | -2.5 |
| Euro-zone | 1.5 | 1.7 | 0.8 | -1.2 | -1.4 | 0.0 | 6.3 | 6.0 | 5.2 | 2.8 | -0.2 | -1.9 |
| B | 2.1 | 1.5 | 3.0 | -1.8 | -4.2 | -0.3 | 9.3 | 8.2 | 7.9 | 4.9 | -1.7 | -3.4 |
| DK | 2.9 | -2.2 | 2.8 | -3.8 | -0.5 | 1.1 | 6.8 | 4.7 | 3.6 | -0.2 | -3.7 | -1.0 |
| D | 1.8 | 1.8 | 0.7 | 0.3 | -2.3 | -1.5 | 6.4 | 5.6 | 5.3 | 4.7 | 0.5 | -2.7 |
| EL | : | : | : | : | : | : | : | : | : | : | : | : |
| E | 1.1 | -1.1 | -0.5 | -0.7 | -0.6 | 0.9 | 5.1 | 3.4 | 1.2 | -1.1 | -2.7 | -1.0 |
| F | 1.1 | 0.8 | 0.8 | -0.7 | -0.6 | 0.0 | 4.5 | 4.9 | 4.0 | 1.6 | 0.9 | -0.2 |
| IRL | : | : | : | : | : | : | : | : | : | : | : | : |
| I | 2.6 | 0.9 | 1.7 | -3.4 | -1.2 | 0.8 | 7.8 | 8.4 | 6.6 | 1.6 | -1.9 | -2.5 |
| L | 0.5 | 0.6 | -3.5 | 7.6 | -3.3 | : | 10.0 | 4.0 | -1.1 | 5.0 | 1.0 | : |
| NL | -1.1 | 1.9 | 1.7 | -2.0 | -1.0 | -0.9 | 4.6 | 4.3 | 5.0 | 0.2 | 0.3 | -2.3 |
| A | 2.9 | 1.0 | 1.5 | 0.7 | -0.5 | : | 7.5 | 6.7 | 8.7 | 7.8 | 1.2 | : |
| P | -0.9 | 3.2 | 0.2 | -1.0 | 4.5 | 2.5 | 3.7 | 7.7 | 2.7 | 1.4 | 6.6 | 6.8 |
| FIN | -0.3 | 5.1 | 0.8 | -4.6 | -1.8 | -5.3 | 7.2 | 10.5 | 8.5 | -0.3 | -2.3 | -10.7 |
| S | 4.4 | -2.7 | 2.6 | -1.4 | -0.4 | : | 11.9 | 7.0 | 6.4 | 2.6 | -1.9 | : |
| UK | 0.4 | 1.2 | -0.6 | -3.2 | -1.9 | -2.2 | 3.3 | 2.7 | 3.0 | -2.2 | -4.5 | -7.9 |

Table 6: Production index for intermediate goods, growth rates (%)

Production index for the main industrial groupings (MIGs)

| | Quarter on quarter growth rates, seasonally adjusted data | | | | | | Year on year growth rates, working day adjusted data | | | | | |
|-----------|--|-------|-------|-------|-------|-------|---|-------|-------|-------|-------|-------|
| | Q2-00 | Q3-00 | Q4-00 | Q1-01 | Q2-01 | Q3-01 | Q2-00 | Q3-00 | Q4-00 | Q1-01 | Q2-01 | Q3-01 |
| EU-15 | 2.3 | 2.7 | 1.4 | 1.3 | -4.1 | 1.1 | 7.9 | 8.9 | 8.6 | 8.1 | 1.3 | -0.6 |
| Euro-zone | 2.2 | 2.9 | 1.0 | 1.6 | -3.8 | 1.3 | 8.5 | 9.7 | 8.9 | 8.1 | 1.8 | 0.0 |
| B | 6.4 | -0.1 | 5.0 | 4.2 | -5.6 | 0.8 | 8.9 | 3.4 | 12.8 | 18.9 | 2.1 | 2.9 |
| DK | 4.8 | 5.2 | 0.7 | 4.2 | 0.7 | 1.6 | 5.3 | 12.3 | 9.9 | 14.2 | 10.7 | 6.4 |
| D | 4.1 | 3.8 | -0.6 | 3.5 | -3.0 | -0.2 | 10.7 | 12.8 | 11.0 | 11.2 | 3.5 | -0.6 |
| EL | : | : | : | : | : | : | : | : | : | : | : | : |
| E | 1.7 | -0.3 | 1.7 | -1.5 | -0.4 | -0.6 | 9.4 | 4.4 | 8.7 | 1.7 | -0.6 | -1.2 |
| F | 0.4 | 1.5 | 1.1 | 0.9 | -0.2 | 0.8 | 2.5 | 4.1 | 3.8 | 3.6 | 3.2 | 3.9 |
| IRL | : | : | : | : | : | : | : | : | : | : | : | : |
| I | 2.8 | 1.1 | 0.2 | 0.3 | -3.0 | -0.8 | 6.3 | 6.5 | 4.5 | 4.3 | -1.4 | -3.9 |
| L | 9.6 | -10.3 | 23.9 | -6.7 | -1.2 | : | -0.2 | -20.7 | 16.3 | 13.8 | 2.4 | : |
| NL | 1.9 | -1.7 | 4.0 | -2.6 | 2.7 | -5.0 | 6.8 | 4.4 | 6.8 | 1.6 | 2.2 | -1.2 |
| A | 3.5 | 1.9 | 1.8 | 2.3 | -11.2 | : | 20.0 | 15.3 | 10.3 | 9.0 | -5.6 | : |
| P | -11.3 | 17.5 | -1.5 | -1.1 | -1.4 | 1.0 | -15.0 | 0.2 | -2.4 | 1.5 | 11.7 | -3.4 |
| FIN | 12.2 | 2.2 | 5.4 | -3.4 | -7.9 | 11.3 | 17.8 | 25.8 | 30.2 | 17.6 | -5.4 | 5.1 |
| S | 6.0 | -1.3 | 4.4 | -0.9 | -6.0 | : | 11.2 | 14.2 | 13.1 | 8.6 | -3.9 | : |
| UK | 1.9 | 1.5 | 3.9 | 0.0 | -6.1 | -1.6 | 3.1 | 2.3 | 5.4 | 7.3 | -1.0 | -4.2 |

Table 7: Production index for capital goods, growth rates (%)

| | Quarter on quarter growth rates, seasonally adjusted data | | | | | | Year on year growth rates, working day adjusted data | | | | | |
|-----------|--|-------|-------|-------|-------|-------|---|-------|-------|-------|-------|-------|
| | Q2-00 | Q3-00 | Q4-00 | Q1-01 | Q2-01 | Q3-01 | Q2-00 | Q3-00 | Q4-00 | Q1-01 | Q2-01 | Q3-01 |
| EU-15 | 2.8 | -0.2 | 1.5 | -1.7 | -1.5 | -1.5 | 8.2 | 5.1 | 4.2 | 2.5 | -1.8 | -3.5 |
| Euro-zone | 3.2 | 0.0 | 1.6 | -1.9 | -1.6 | -1.6 | 8.3 | 5.3 | 4.4 | 2.9 | -1.9 | -3.8 |
| B | 0.3 | 0.4 | 0.5 | -0.8 | 2.1 | -2.7 | 3.4 | 0.8 | -1.8 | 0.3 | 2.1 | -1.2 |
| DK | 2.4 | 1.3 | -1.0 | -4.6 | -2.6 | -0.4 | 13.6 | 15.1 | 7.6 | -2.0 | -6.6 | -9.6 |
| D | 3.6 | 1.1 | -1.0 | 2.1 | 0.2 | 0.1 | 7.1 | 4.8 | 2.6 | 6.0 | 2.5 | 1.1 |
| EL | : | : | : | : | : | : | : | : | : | : | : | : |
| E | -0.7 | -0.9 | -1.5 | -4.2 | -2.8 | 1.9 | 9.9 | 7.0 | 4.4 | -7.2 | -9.9 | -6.5 |
| F | 2.5 | -0.1 | 0.4 | -0.4 | -2.8 | 0.1 | 3.1 | 0.9 | 1.9 | 3.4 | -3.0 | -4.4 |
| IRL | : | : | : | : | : | : | : | : | : | : | : | : |
| I | 3.1 | -0.3 | 1.9 | -3.4 | -1.8 | -2.0 | 12.0 | 7.8 | 8.1 | 1.0 | -3.4 | -6.9 |
| L | : | : | : | : | : | : | : | : | : | : | : | : |
| NL | 13.7 | -7.9 | 7.1 | -6.3 | 2.1 | -15.5 | 17.1 | 12.2 | 10.9 | 5.2 | -5.5 | -13.3 |
| A | 1.8 | -2.7 | 1.7 | 2.3 | -5.8 | : | 2.8 | -1.4 | 1.8 | 3.1 | -4.5 | : |
| P | -0.2 | 1.4 | -3.0 | 1.4 | -3.2 | -0.7 | -2.9 | -0.1 | -4.3 | -0.5 | -3.4 | -6.1 |
| FIN | 9.1 | 9.1 | -4.3 | -3.0 | -2.4 | 0.1 | 5.7 | 18.5 | 14.3 | 10.6 | -1.4 | -10.9 |
| S | 5.8 | -4.6 | 4.8 | -5.6 | -4.5 | : | 19.0 | 13.1 | 11.8 | -0.1 | -9.3 | : |
| UK | -0.4 | -0.2 | 1.0 | 1.2 | 0.2 | -0.8 | 4.2 | 0.5 | 0.2 | 1.7 | 2.4 | 1.5 |

Table 8: Production index for consumer durables, growth rates (%)

| | Quarter on quarter growth rates, seasonally adjusted data | | | | | | Year on year growth rates, working day adjusted data | | | | | |
|-----------|--|-------|-------|-------|-------|-------|---|-------|-------|-------|-------|-------|
| | Q2-00 | Q3-00 | Q4-00 | Q1-01 | Q2-01 | Q3-01 | Q2-00 | Q3-00 | Q4-00 | Q1-01 | Q2-01 | Q3-01 |
| EU-15 | 2.4 | 0.3 | 0.8 | -0.7 | 0.5 | 0.5 | 2.9 | 1.5 | 1.4 | 2.9 | 0.8 | 1.0 |
| Euro-zone | 2.6 | 0.5 | 0.8 | -0.9 | 0.5 | 0.5 | 3.1 | 2.0 | 1.7 | 3.0 | 0.8 | 0.9 |
| B | 2.6 | -0.2 | 2.0 | 0.4 | -2.0 | -0.8 | 5.2 | 2.8 | 4.1 | 4.8 | 0.2 | -0.4 |
| DK | 5.0 | 0.3 | 0.5 | 0.0 | -0.7 | 1.5 | 9.0 | 6.3 | 5.3 | 5.6 | 0.1 | 1.3 |
| D | 3.3 | 0.1 | -0.4 | -0.6 | -0.3 | 0.4 | 3.5 | 2.4 | 1.2 | 2.1 | -1.1 | -1.0 |
| EL | 0.8 | -2.8 | -1.4 | 2.5 | -0.8 | : | 16.9 | 9.0 | 8.2 | -0.6 | -2.4 | : |
| E | 0.7 | 3.1 | -2.5 | -2.1 | 2.6 | 1.1 | -0.1 | 2.4 | -1.8 | -0.8 | 0.9 | -1.0 |
| F | 0.2 | 1.5 | 0.4 | 0.9 | 0.7 | 0.4 | 0.8 | 1.7 | 0.1 | 2.6 | 3.1 | 2.2 |
| IRL | 9.4 | -4.3 | 4.5 | 5.0 | -2.9 | : | 12.7 | -0.3 | 2.4 | 15.7 | 1.5 | : |
| I | 4.0 | 0.1 | 2.9 | -1.1 | 0.2 | 1.0 | 4.2 | 0.9 | 5.3 | 5.8 | 2.0 | 3.2 |
| L | 1.9 | 0.6 | -1.9 | 11.2 | -1.5 | : | 3.2 | 2.2 | 3.6 | 11.9 | 8.1 | : |
| NL | 3.9 | 1.0 | -0.6 | -3.0 | 2.1 | 0.5 | 3.5 | 2.8 | 2.2 | 1.1 | -0.7 | -1.1 |
| A | 3.7 | 1.1 | -1.6 | -1.8 | 1.8 | : | 11.9 | 9.8 | 2.3 | 0.6 | -0.6 | : |
| P | 2.3 | 0.4 | 1.9 | -3.2 | -0.7 | -0.8 | -0.2 | -1.1 | 2.3 | 1.0 | -1.7 | -2.8 |
| FIN | 0.4 | 1.1 | 3.5 | -2.4 | -0.5 | -3.3 | -5.4 | -5.7 | 0.7 | 4.2 | 1.8 | -3.1 |
| S | 7.0 | -0.3 | 1.6 | 1.1 | -0.3 | : | 3.5 | 3.3 | 4.2 | 10.0 | 1.9 | : |
| UK | -0.1 | -0.7 | 0.1 | 1.2 | 0.1 | 0.3 | 0.5 | -1.7 | -1.6 | 0.7 | 0.8 | 1.7 |

Table 9: Production index for consumer non-durables, growth rates (%)

Production index for 2-digit NACE activities in the EU

| NACE Rev. 1 heading (code) | Weight in total industry (%) | Seasonally adjusted index (1995=100) | | | | | | | | Latest growth rates (1) | |
|--|------------------------------|--------------------------------------|-------|-------|-------|-------|-------|-------|-------|-------------------------|----------|
| | | Q4-99 | Q1-00 | Q2-00 | Q3-00 | Q4-00 | Q1-01 | Q2-01 | Q3-01 | Q/Q-1(%) | Q/Q-4(%) |
| Total industry (excluding construction) C-E | 100.0 | 112.7 | 113.1 | 115.8 | 116.9 | 118.2 | 117.5 | 116.2 | 115.9 | -0.3 | -0.9 |
| Total industry (excluding energy & construction) | 86.8 | 112.3 | 113.1 | 115.7 | 117.3 | 118.1 | 117.7 | 115.9 | 116.0 | 0.0 | -1.2 |
| Energy | 13.2 | 106.9 | 108.4 | 107.5 | 107.8 | 106.1 | 106.4 | 107.3 | 107.8 | 0.4 | 0.0 |
| Intermediate goods | 35.2 | 111.5 | 113.1 | 115.0 | 116.5 | 116.9 | 115.5 | 114.1 | 113.7 | -0.4 | -2.5 |
| Capital goods | 24.7 | 120.4 | 122.9 | 125.7 | 129.1 | 130.9 | 132.6 | 127.2 | 128.5 | 1.1 | -0.6 |
| Durable consumer goods | 4.2 | 111.6 | 111.8 | 114.9 | 114.8 | 116.5 | 114.6 | 112.8 | 111.1 | -1.5 | -3.5 |
| Non-durable consumer goods | 22.6 | 106.3 | 104.1 | 106.7 | 107.0 | 107.8 | 107.0 | 107.5 | 108.0 | 0.5 | 1.0 |
| Mining of coal and lignite 10 | 0.7 | 74.5 | 75.4 | 74.4 | 72.7 | 70.4 | 68.5 | 68.5 | 65.2 | -4.8 | -10.3 |
| Extraction of crude petroleum and natural gas 11 | 1.8 | 114.3 | 113.6 | 111.6 | 109.9 | 106.0 | 104.6 | 105.7 | 103.7 | -1.8 | -5.2 |
| Mining of metal ores 13 | 0.1 | 83.7 | 82.1 | 81.5 | 80.2 | 75.2 | 79.8 | 77.1 | : | -3.4 | -5.4 |
| Other non-metallic mining 14 | 0.7 | 108.1 | 111.4 | 111.2 | 109.8 | 111.7 | 109.0 | 110.1 | 110.5 | 0.3 | 0.6 |
| Food and beverages 15 | 9.7 | 108.2 | 105.8 | 108.3 | 108.4 | 108.5 | 107.1 | 108.5 | 109.3 | 0.7 | 0.9 |
| Tobacco 16 | 0.5 | 94.8 | 92.3 | 94.3 | 94.3 | 89.6 | 94.6 | 90.3 | 92.5 | 2.4 | -2.0 |
| Textiles 17 | 2.6 | 93.9 | 93.5 | 95.3 | 96.4 | 95.9 | 93.9 | 92.8 | 92.6 | -0.2 | -3.9 |
| Clothing 18 | 1.8 | 76.4 | 75.5 | 76.5 | 75.7 | 77.1 | 77.6 | 76.1 | 75.9 | -0.3 | 0.1 |
| Leather products 19 | 0.9 | 89.0 | 87.2 | 88.8 | 87.3 | 87.3 | 88.6 | 87.4 | 86.9 | -0.6 | -0.5 |
| Wood products 20 | 1.7 | 110.2 | 110.5 | 113.2 | 111.2 | 110.2 | 108.3 | 106.8 | 105.4 | -1.3 | -5.6 |
| Pulp & paper 21 | 2.9 | 108.7 | 108.3 | 109.9 | 111.9 | 110.7 | 108.7 | 107.5 | 107.6 | 0.1 | -3.9 |
| Publishing & printing 22 | 5.1 | 115.6 | 114.8 | 116.5 | 116.7 | 116.9 | 116.4 | 115.3 | 114.2 | -1.0 | -2.7 |
| Refined petroleum products 23 | 1.2 | 93.5 | 96.9 | 96.4 | 98.2 | 100.8 | 99.7 | 95.9 | 99.2 | 3.5 | 1.1 |
| Chemicals 24 | 9.5 | 122.5 | 120.2 | 124.1 | 125.0 | 128.4 | 126.9 | 127.5 | 126.7 | -0.6 | 1.4 |
| Rubber & plastics 25 | 4.0 | 114.7 | 115.6 | 117.5 | 118.4 | 118.3 | 117.8 | 116.5 | 116.5 | 0.1 | -1.7 |
| Non-metallic minerals 26 | 4.1 | 105.7 | 106.6 | 106.6 | 107.1 | 107.5 | 106.9 | 105.7 | 105.0 | -0.7 | -2.1 |
| Basic metals 27 | 4.0 | 104.3 | 106.2 | 108.0 | 109.4 | 109.5 | 108.4 | 106.6 | 107.6 | 0.9 | -1.7 |
| Metal products 28 | 7.3 | 112.1 | 112.5 | 115.2 | 115.7 | 116.5 | 117.4 | 116.4 | 115.1 | -1.1 | -0.5 |
| Machinery 29 | 9.4 | 104.4 | 106.9 | 110.4 | 112.7 | 114.0 | 114.2 | 112.7 | 112.9 | 0.2 | 0.2 |
| Office machinery 30 | 1.2 | 160.7 | 164.0 | 180.7 | 198.6 | 188.0 | 204.8 | 184.3 | 176.1 | -4.5 | -11.3 |
| Electrical machinery 31 | 4.3 | 118.4 | 118.8 | 122.4 | 125.6 | 129.3 | 129.2 | 125.8 | 125.6 | -0.2 | 0.0 |
| Radio, TV and communications 32 | 2.6 | 149.8 | 159.5 | 171.7 | 181.3 | 186.7 | 180.2 | 165.1 | 161.5 | -2.1 | -11.1 |
| Medical and optical instruments 33 | 2.4 | 115.1 | 118.8 | 123.0 | 126.6 | 128.8 | 130.4 | 130.1 | 131.3 | 0.9 | 3.4 |
| Motor vehicles 34 | 6.8 | 131.3 | 135.8 | 138.3 | 138.8 | 139.7 | 145.3 | 139.6 | 139.9 | 0.2 | 0.8 |
| Other transport equipment 35 | 2.0 | 115.6 | 115.7 | 116.0 | 116.1 | 118.2 | 117.5 | 116.4 | 116.5 | 0.1 | -0.2 |
| Furniture & other manufacturing 36 | 2.9 | 107.1 | 106.6 | 108.5 | 107.7 | 109.3 | 107.5 | 106.4 | 105.7 | -0.6 | -2.1 |
| Electricity, gas and hot water supply 40 | 8.7 | 111.9 | 112.7 | 113.1 | 114.3 | 112.2 | 112.3 | 114.3 | 115.4 | 1.0 | 1.1 |
| Water 41 | 0.9 | 97.9 | 97.5 | 97.9 | 97.7 | 98.0 | 98.8 | 98.8 | : | 0.1 | 0.9 |

Table 10: Production index for 2-digit NACE activities in the EU

¹ Q/Q-1 on the basis of a seasonally adjusted series; Q/Q-4 on the basis of a working day adjusted series.

Production index for the three largest NACE Divisions within total industry (excluding construction)

| | Seasonally adjusted index (1995=100) | | | | | | | | Latest growth rates (1) | |
|-----------|--------------------------------------|-------|-------|-------|-------|-------|-------|-------|-------------------------|----------|
| | Q4-99 | Q1-00 | Q2-00 | Q3-00 | Q4-00 | Q1-01 | Q2-01 | Q3-01 | Q/Q-1(%) | Q/Q-4(%) |
| EU-15 | 108.2 | 105.8 | 108.3 | 108.4 | 108.5 | 107.1 | 108.5 | 109.3 | 0.7 | 0.9 |
| Euro-zone | 109.4 | 107.6 | 110.1 | 110.0 | 109.8 | 108.5 | 110.0 | 111.0 | 0.8 | 0.8 |
| B | 106.2 | 106.3 | 110.1 | 110.5 | 112.3 | 113.3 | 112.8 | 114.1 | 1.2 | 2.9 |
| DK | 105.1 | 102.3 | 105.0 | 107.4 | 107.7 | 105.2 | 101.6 | 103.5 | 1.8 | -3.3 |
| D | 107.0 | 104.6 | 108.2 | 107.2 | 106.7 | 105.5 | 106.6 | 108.2 | 1.5 | 0.3 |
| EL | 106.4 | 118.7 | 118.9 | 105.9 | 113.6 | : | : | : | 7.3 | 7.5 |
| E | 109.6 | 108.3 | 110.9 | 111.0 | 105.0 | 106.7 | 113.8 | 113.3 | -0.4 | 2.1 |
| F | 109.5 | 107.6 | 107.1 | 109.1 | 107.5 | 108.7 | 109.9 | 109.2 | -0.6 | 0.0 |
| IRL | 125.5 | 113.5 | 120.8 | 118.4 | 129.8 | 119.6 | 113.1 | : | -5.5 | -6.5 |
| I | 108.0 | 107.0 | 111.7 | 112.4 | 113.0 | 110.4 | 110.1 | 111.8 | 1.5 | -0.5 |
| L | 97.5 | 92.6 | 92.6 | 92.9 | 94.9 | 98.4 | 96.9 | : | -1.5 | 4.7 |
| NL | 106.2 | 106.0 | 108.7 | 108.4 | 107.7 | 106.9 | 108.1 | : | 1.1 | -0.9 |
| A | 119.0 | 118.1 | 121.6 | 120.7 | 120.1 | 120.0 | 119.8 | : | -0.1 | -1.8 |
| P | 115.9 | 115.0 | 117.7 | 116.1 | 115.9 | 111.9 | 111.0 | 112.1 | 1.0 | -3.1 |
| FIN | 112.6 | 110.5 | 113.6 | 112.5 | 111.9 | 114.6 | 115.1 | 113.0 | -1.8 | 0.3 |
| S | 104.3 | 100.2 | 105.4 | 105.0 | 104.5 | 106.8 | 108.8 | : | 1.9 | 3.5 |
| UK | 102.7 | 101.6 | 101.8 | 102.4 | 102.2 | 102.9 | 103.8 | 104.1 | 0.3 | 1.7 |

Table 11: Production index for food products and beverages (1995=100)

| | Seasonally adjusted index (1995=100) | | | | | | | | Latest growth rates (1) | |
|-----------|--------------------------------------|-------|-------|-------|-------|-------|-------|-------|-------------------------|----------|
| | Q4-99 | Q1-00 | Q2-00 | Q3-00 | Q4-00 | Q1-01 | Q2-01 | Q3-01 | Q/Q-1(%) | Q/Q-4(%) |
| EU-15 | 122.5 | 120.2 | 124.1 | 125.0 | 128.4 | 126.9 | 127.5 | 126.7 | -0.6 | 1.4 |
| Euro-zone | 123.9 | 121.8 | 125.5 | 126.4 | 129.7 | 128.1 | 128.4 | 127.5 | -0.7 | 0.9 |
| B | 132.2 | 137.6 | 141.1 | 136.1 | 138.6 | 137.1 | 136.0 | 134.5 | -1.1 | -1.6 |
| DK | 144.3 | 150.7 | 160.7 | 168.6 | 169.9 | 170.2 | 178.3 | 180.0 | 1.0 | 7.0 |
| D | 117.5 | 117.3 | 120.3 | 120.2 | 120.5 | 118.2 | 118.0 | 117.0 | -0.8 | -2.6 |
| EL | 111.6 | 118.1 | 114.1 | 111.8 | 113.3 | 107.9 | 112.2 | : | 4.0 | -1.4 |
| E | 117.7 | 114.6 | 110.0 | 115.1 | 114.2 | 116.5 | 113.1 | 115.1 | 1.8 | 0.0 |
| F | 118.2 | 117.4 | 119.0 | 120.8 | 122.7 | 121.6 | 122.3 | 125.3 | 2.5 | 3.8 |
| IRL | 326.3 | 253.9 | 327.7 | 322.4 | 420.1 | 385.0 | 406.3 | : | 5.5 | 24.0 |
| I | 106.7 | 106.3 | 108.7 | 106.9 | 108.4 | 104.8 | 107.3 | 105.1 | -2.0 | -1.9 |
| L | 166.3 | 187.0 | 175.5 | 168.7 | 133.5 | 173.1 | 183.1 | : | 5.7 | 4.3 |
| NL | 112.7 | 113.5 | 114.2 | 117.9 | 119.9 | 116.8 | 117.8 | 117.8 | 0.0 | -0.1 |
| A | 135.5 | 130.8 | 132.9 | 130.7 | 133.5 | 135.4 | 137.2 | : | 1.3 | 3.2 |
| P | 114.1 | 110.1 | 111.4 | 110.4 | 113.8 | 107.1 | 107.7 | 113.9 | 5.7 | 3.4 |
| FIN | 119.7 | 124.2 | 123.7 | 124.6 | 126.3 | 125.0 | 123.9 | 120.2 | -3.0 | -3.6 |
| S | 125.6 | 126.1 | 137.8 | 136.8 | 143.9 | 145.4 | 144.9 | : | -0.4 | 4.4 |
| UK | 111.6 | 109.8 | 110.6 | 111.8 | 115.0 | 113.4 | 114.3 | 116.2 | 1.7 | 2.4 |

Table 12: Production index for chemicals and chemical products (1995=100)

| | Seasonally adjusted index (1995=100) | | | | | | | | Latest growth rates (1) | |
|-----------|--------------------------------------|-------|-------|-------|-------|-------|-------|-------|-------------------------|----------|
| | Q4-99 | Q1-00 | Q2-00 | Q3-00 | Q4-00 | Q1-01 | Q2-01 | Q3-01 | Q/Q-1(%) | Q/Q-4(%) |
| EU-15 | 104.4 | 106.9 | 110.4 | 112.7 | 114.0 | 114.2 | 112.7 | 112.9 | 0.2 | 0.2 |
| Euro-zone | 107.4 | 110.5 | 114.1 | 116.8 | 118.5 | 118.2 | 116.8 | 117.1 | 0.3 | 0.3 |
| B | 96.3 | 100.7 | 104.7 | 101.7 | 105.0 | 103.5 | 102.6 | 104.0 | 1.4 | -0.2 |
| DK | 99.1 | 100.5 | 102.7 | 108.2 | 106.9 | 108.2 | 110.3 | 110.5 | 0.2 | 2.1 |
| D | 107.0 | 110.8 | 114.2 | 118.8 | 117.1 | 120.2 | 118.1 | 119.2 | 0.9 | 0.4 |
| EL | 103.3 | 121.3 | 127.6 | 123.0 | 116.7 | 131.1 | 117.8 | : | -10.1 | -7.7 |
| E | 119.2 | 126.2 | 125.1 | 124.5 | 122.2 | 121.7 | 125.0 | 133.1 | 6.5 | 7.3 |
| F | 109.9 | 110.1 | 112.7 | 114.2 | 117.9 | 115.9 | 113.2 | 112.6 | -0.5 | -1.7 |
| IRL | 98.9 | 96.7 | 107.1 | 105.0 | 110.2 | 101.7 | 100.7 | : | -1.0 | -5.9 |
| I | 102.1 | 102.9 | 107.2 | 112.6 | 113.5 | 111.9 | 109.4 | 110.5 | 1.1 | -1.8 |
| L | 127.1 | 115.7 | 120.0 | 103.9 | 136.5 | 122.4 | 124.1 | : | 1.4 | 3.3 |
| NL | 113.4 | 126.5 | 127.4 | 127.6 | 129.7 | 127.7 | 128.6 | : | 0.7 | 0.9 |
| A | 127.9 | 128.1 | 136.5 | 139.1 | 141.0 | 145.8 | 141.9 | : | -2.7 | 3.2 |
| P | 104.8 | 103.2 | 104.2 | 105.1 | 103.7 | 103.4 | 102.1 | 101.9 | -0.2 | -2.9 |
| FIN | 108.2 | 111.1 | 117.1 | 120.0 | 123.5 | 119.5 | 122.2 | 127.1 | 4.0 | 5.9 |
| S | 91.9 | 92.1 | 96.0 | 93.2 | 93.3 | 94.4 | 90.8 | : | -3.9 | -6.0 |
| UK | 90.1 | 87.8 | 89.9 | 90.2 | 91.4 | 92.9 | 91.7 | 89.6 | -2.3 | -1.6 |

Table 13: Production index for machinery and equipment (1995=100)

¹ Q/Q-1 on the basis of a seasonally adjusted series; Q/Q-4 on the basis of a working day adjusted series.

➤ ESSENTIAL INFORMATION – METHODOLOGICAL NOTES

Growth rates for the euro-zone are shown with the euro-zone treated as a single entity. As such, growth rates before the first quarter of 2001 compare on the basis of eleven countries, whilst growth rates from the first quarter of 2001 onwards compare on the basis of twelve countries.

The **legal basis** for the production index is the **Council Regulation No 1165/98** of 19th of May 1998 concerning short-term statistics¹ (STS-R), which is currently in the process of implementation.

The **production index** is an important business cycle indicator which shows the monthly activity of the industrial sector, which is the one of the most volatile components of the economy.

The coverage of the production index according to the STS-R includes all activities listed in Sections C to E (mining and quarrying, manufacturing, and electricity, gas and water supply) of the NACE Rev. 1² classification, except Division 41 (collection, purification and distribution of water) and Group 40.3 (steam and hot water supply).

Definition

As specified in the STS-R, and in line with traditional practice in business statistics, **the production index should show the evolution of value added at factor cost**, at constant prices. Value added at factor cost can be calculated from turnover (excluding VAT), plus capitalised production, plus other

operating income, plus or minus the changes in stocks, minus the purchases of goods and services, minus other taxes on products and taxes linked to production.

This index of production should take account of:

- variations in type and quality of the commodities and of the input materials;
- changes in stocks of finished goods and work in progress;
- changes in technical input-output relations (processing techniques) and;
- services such as the assembling of production units, mounting, installations, repairs, planning, engineering, creation of software.

The observation unit for this index is the kind-of-activity unit, though, for enterprises with few persons employed in secondary activities, the local unit or the enterprise may be used as a proxy.

Data transmission and calculation method

Data should be transmitted to Eurostat for the Main Industrial Groupings (MIGs) and at the 2-digit level of NACE Rev. 1 by all Member States. For Section D (manufacturing), data shall be transmitted at the 3-digit and 4-digit levels by those Member States whose total value added for this Section represents more than 5% of the European Community total. The data are used to produce aggregated indicators for the Community as a whole, and for the group of Member States participating in the euro-zone.

The **reference period** for the production index is a calendar month. **Data should be transmitted to Eurostat no later than 1 month and 15 days** after the end of the reference period. This deadline may, however, be extended by up to 15 calendar days for those Member States whose value added in Sections C, D and E of NACE Rev. 1 in a given base year represents less than 3% of the European Community total.

The **weights** used for the production index are based on information from the Structural Business Statistics database or information coming directly from the Member States. **Eurostat uses gross value added at factor cost to calculate the weights.** Weights and the base year are revised every five years. **The current base year is 1995.**

Member States should transmit a working day adjusted index. They may also transmit seasonally adjusted and trend-cycle indices. If data are not transmitted in these forms, Eurostat produces the adjusted figures.

For **the calculation of** the euro-zone and the EU-15 **seasonally adjusted aggregates**, Eurostat aggregates working day adjusted data from Member States in order to compile a working day adjusted euro-zone and EU-15 series. Seasonally adjusted euro-zone and EU-15 series are then **produced using the TRAMO & SEATS method.** For these reasons, the euro-zone and EU-15 seasonally adjusted growth rates might differ from the weighted growth rates of the individual Member States.

Dissemination

Eurostat publishes detailed data and time series in Theme 4/EBT-domain of NewCronos.

Further information

Carmen Lipp-Lingua
Tel: +352-4301-35253,
Fax +352-4301-34359,
carmen.lipp-lingua@cec.eu.int

¹ Official Journal No L 162, of 5th June 1998. Also available via the "Business Methods" Internet site: <http://forum.europa.eu.int/Public/irc/dsis/bmethods/home>. The deadline for the full implementation of the Regulation regarding the indices is mid-2003.

² NACE Rev. 1 - Statistical classification of economic activities in the European Community, Eurostat, 1996 (ISBN 92-826-8767-8).

Further information:

➤ Reference publications

Title Monthly Panorama of European Business
 Catalogue No KS-AM-02-000-EN-C Price EUR 162

➤ Databases

NewCronos, Theme 4
 Domain EBT (European Business Trends)

To obtain information or to order publications, databases and special sets of data, please contact the **Data Shop** network:

| BELGIQUE/BELGIË | DANMARK | DEUTSCHLAND | ESPAÑA | FRANCE | ITALIA - Roma |
|---|---|--|--|--|---|
| Eurostat Data Shop Bruxelles/Brussel Planiestat Belgique Rue du Commerce 124 Handelsstraat 124 B-1000 BRUXELLES / BRUSSEL Tel. (32-2) 234 67 50 Fax (32-2) 234 67 51 E-mail: datashop@lanikstat.be URL: http://www.datasshop.org/ | DANMARKS STATISTIK Bibliotek og Information Eurostat Data Shop Sejrogade 11 DK-2100 KØBENHAVN Ø Tlf. (45) 39 17 30 30 Fax (45) 39 17 30 03 E-mail: lib@dst.dk Internet: http://www.dst.dk/bibliotek | STATISTISCHES BUNDESAMT Eurostat Data Shop Berlin Otto-Braun-Straße 70-72 (Eingang: Karl-Marx-Allee) D-10178 BERLIN Tel. (49) 1888 644 94 27/28 Fax (49) 1888-644 94 30 E-Mail: datashop@destatis.de URL: http://www.eu-datasshop.de/ | INE Eurostat Data Shop Paseo de la Castellana, 183 Oficina 011 Entrada por Estébanez Calderón E-28046 MADRID Tel. (34) 91 583 91 67 Fax (34) 91 579 71 20 E-mail: datashop.eurostat@ine.es URL: http://www.datasshop.org/ | INSEE Info Service Eurostat Data Shop 195, rue de Bercy Tour Gamma A F-75582 PARIS CEDEX 12 Tél. (33) 1 53 17 88 44 Fax (33) 1 53 17 88 22 E-mail: datashop@insee.fr | ISTAT Centro di Informazione Statistica Sede di Roma, Eurostat Data Shop Via Cesare Balbo, 11a I-00184 ROMA Tel. (39) 06 46 73 31 02/06 Fax (39) 06 46 73 31 01/07 E-mail: dipdiff@istat.it |
| ITALIA - Milano | LUXEMBOURG | NEDERLAND | NORGE | PORTUGAL | SCHWEIZ/SUISSE/SVIZZERA |
| ISTAT Ufficio Regionale per la Lombardia Eurostat Data Shop Via Fieno 3 I-20123 MILANO Tel. (39) 02 80 61 32 460 Fax (39) 02 80 61 32 304 E-mail: mileuro@tin.it | Eurostat Data Shop Luxembourg BP 453 L-2014 LUXEMBOURG 4, rue Alphonse Weicker L-2721 LUXEMBOURG Tél. (352) 43 35-2251 Fax (352) 43 35-22221 E-mail: dslux@eurostat.datasshop.lu URL: http://www.datasshop.org/ | STATISTICS NETHERLANDS Eurostat Data Shop-Voorburg Postbus 4000 2270 JM VOORBURG Nederland Tel. (31-70) 337 49 00 Fax (31-70) 337 59 84 E-mail: datashop@cbs.nl | Statistics Norway Library and Information Centre Eurostat Data Shop Kongens gate 6 Boks 8131 Dep. N-0033 OSLO Tel. (47) 21 09 46 42/43 Fax (47) 21 09 45 04 E-mail: Datashop@ssb.no | Eurostat Data Shop Lisboa INE/Serviço de Difusão Av. António José de Almeida, 2 P-1000-043 LISBOA Tel. (351) 21 842 61 00 Fax (351) 21 842 63 64 E-mail: data.shop@ine.pt | Statistisches Amt des Kantons Zürich, Eurostat Data Shop Bleicherweg 5 CH-8090 Zürich Tel. (41-1) 225 12 12 Fax (41-1) 225 12 99 E-mail: datashop@statistik.zh.ch Internet: http://www.statistik.zh.ch |
| SUOMI/FINLAND | SVERIGE | UNITED KINGDOM | UNITED STATES OF AMERICA | | |
| STATISTICS FINLAND Eurostat Data Shop Helsinki Tilastokijasto PL2B FIN-00022 Tilastokeskus Työpajakat u 13 B, 2, Kerros, Helsinki P. (358-9) 17 34 22 21 F. (358-9) 17 34 22 79 Sähköposti: datashop@stat.fi URL: http://www.tilastokeskus.fi/ttk/ikk/datashop/ | STATISTICS SWEDEN Information service Eurostat Data Shop Karlavägen 100 - Box 24 300 S-104 51 STOCKHOLM Tfn (46-8) 50 69 48 01 Fax (46-8) 50 69 48 99 E-post: infoservice@scb.se Internet: http://www.scb.se/info/datashop/peudatashop.asp | Eurostat Data Shop Office for National Statistics Room 1.01.5 Cardiff Road Newport South Wales NP10 8XG United Kingdom Tel. (44-1633) 81 33 69 Fax (44-1633) 81 33 33 E-mail: eurostat.datasshop@ons.gov.uk | HAVER ANALYTICS Eurostat Data Shop 60 East 42nd Street Suite 3310 NEW YORK, NY 10165 USA Tel. (1-212) 986 93 00 Fax (1-212) 986 69 81 E-mail: euordata@haver.com | | |

Media Support Eurostat (for professional journalists only):
 Bech Building Office A3/48 - L-2920 Luxembourg - Tel. (352) 4301 33408 - Fax (352) 4301 32649 - e-mail: eurostat-mediasupport@cec.eu.int

For information on methodology

Carmen Lipp-Lingua, Eurostat/D3, L-2920 Luxembourg, Tel. (352) 4301 35253, Fax (352) 4301 34359,
 E-mail: carmen.lipp-lingua@cec.eu.int
 ORIGINAL: English

Please visit our web site at www.europa.eu.int/comm/eurostat/ for further information!

A list of worldwide sales outlets is available at the **Office for Official Publications of the European Communities**.

2 rue Mercier - L-2985 Luxembourg
 Tel. (352) 2929 421 18 Fax (352) 2929 427 09
 Internet Address <http://eur-op.eu.int/tf/general/s-ad.htm>
 e-mail: info-info-opoce@cec.eu.int

BELGIQUE/BELGIË - DANMARK - DEUTSCHLAND - GREECE/ELLADA - ESPAÑA - FRANCE - IRELAND - ITALIA - LUXEMBOURG - NEDERLAND - ÖSTERREICH
 PORTUGAL - SUOMI/FINLAND - SVERIGE - UNITED KINGDOM - ISLAND - NORGE - SCHWEIZ/SUISSE/SVIZZERA - BALGARİJA - CESKÁ REPUBLIKA - CYPRUS
 EESTI - HRVATSKA - MAGYARORSZÁG - MALTA - POLSKA - ROMÂNIA - RUSSIA - SLOVAKIA - SLOVENIA - TÜRKİYE - AUSTRALIA - CANADA - EGYPT - INDIA
 ISRAËL - JAPAN - MALAYSIA - PHILIPPINES - SOUTH KOREA - THAILAND - UNITED STATES OF AMERICA

Order form

I would like to subscribe to Statistics in focus (from 1.1.2002 to 31.12.2002):
 (for the Data Shop and sales office addresses see above)

Formula 1: All 9 themes (approximately 140 issues)

Paper: EUR 360
 Language required: DE EN FR

Formula 2: One or more of the following seven themes:

- Theme 1 'General statistics'
 Paper: EUR 42
- Theme 2 'Economy and finance'
- Theme 3 'Population and social conditions'
- Theme 4 'Industry, trade and services'
- Theme 5 'Agriculture and fisheries'
- Theme 6 'External trade'
- Theme 8 'Environment and energy'
 Paper: EUR 84

Language required: DE EN FR

Statistics in focus can be downloaded (pdf file) free of charge from the Eurostat web site. You only need to register. For other solutions, contact your Data Shop.

Please send me a free copy of 'Eurostat mini-guide' (catalogue containing a selection of Eurostat products and services)
 Language required: DE EN FR

I would like a free subscription to 'Statistical References', the information letter on Eurostat products and services
 Language required: DE EN FR

Mr Mrs Ms

(Please use block capitals)

Surname: _____ Forename: _____

Company: _____ Department: _____

Function: _____

Address: _____

Post code: _____ Town: _____

Country: _____

Tel.: _____ Fax: _____

E-mail: _____

Payment on receipt of invoice, preferably by:

- Bank transfer
- Visa Eurocard

Card No: _____ Expires on: ____/____/____

Please confirm your intra-Community VAT number:

If no number is entered, VAT will be automatically applied. Subsequent reimbursement will not be possible.