

Euro-zone construction output rises by 2.2%

in the fourth quarter of 2000 (compared to the same quarter of the previous year)

Gunter Schäfer

Latest construction trends

EU-15 construction output rose by 1.9% in the final quarter of 2000, when compared to the fourth quarter of 1999. Third quarter data has been significantly revised upwards (by 1.6 percentage points for the EU) and as a result also recorded a positive growth rate when compared to the same period of the previous year (0.4%). Civil engineering output (up 1.0% in the fourth quarter of 2000) continued to lag behind the growth rates reported for the building sector (1.5%) in both the EU and the euro-zone.

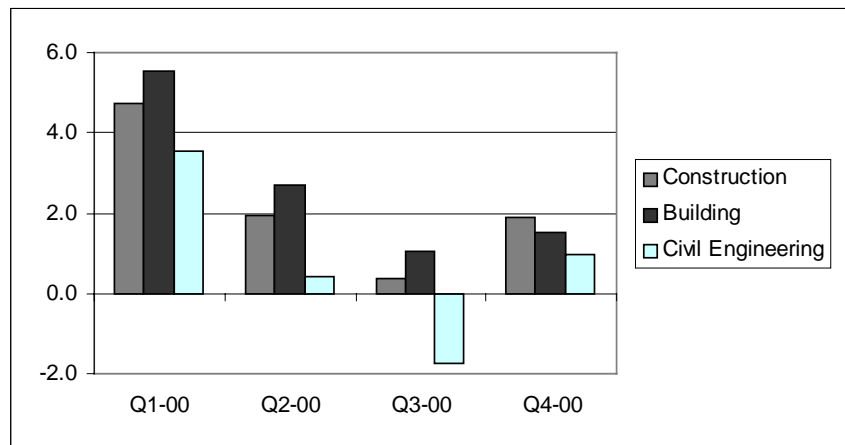


Figure 1: Production volume index for construction, building and civil engineering, growth rates, compared to the same quarter of the previous year (%)

Quarter on quarter growth rates, seasonally adjusted series				Year on year growth rates, working day adjusted series			
EU-15		EUR-11		EU-15		EUR-11	
Q2-00	-0.5	Q2-00	0.3	Q2-00	1.9	Q2-00	1.9
Q3-00	-0.8	Q3-00	0.4	Q3-00	0.4	Q3-00	0.6
Q4-00	2.4	Q4-00	0.7	Q4-00	1.9	Q4-00	2.2

Table 1: Production volume index for construction, growth rates (%)

Statistics in focus

INDUSTRY, TRADE AND SERVICES

THEME 4 – 21/2001

Contents

Latest construction trends	1
Production indices for construction.....	2
Production indices for building and civil engineering	3
New orders and employment	4
Hours worked and wages and salaries.....	5
Construction costs and building permits	6
Indices for building permits in square metres.....	7
Definitions	7



Production indices for construction

Having experienced a fairly rapid slowdown in activity during the middle of 2000, the EU index of production for the construction sector grew at a rapid pace in the final quarter of 2000. Using a growth rate that measures the change in the index between one quarter and the next, construction output fell in both the second and third quarter in the EU (down by 0.5% and 0.8% respectively). However, growth in the fourth quarter of 2000 was equal to 2.4%.

Using the same measure, rapid growth of 2.0% or more was reported in Finland, Belgium, Austria and Spain. In the final quarter of 2000 there was not a single Member State recording a negative change in output within the construction sector.

German construction output rose by 1.7% in the final quarter of 2000 marking an end to four negative figures using a quarter on quarter growth rate. This upswing was in contrast to the data measuring the change between the final quarters of 1999 and 2000, which continued to show German construction activity contracting by 3.3% (the third consecutive negative rate using this measure).

In France, construction output grew by 0.5% between the third and fourth quarters of 2000, and by 1.3% between the final quarters of 1999 and 2000.

In the United Kingdom output in the construction sector rose by 1.0% in the final quarter (compared to the third quarter), whilst it fell by 0.3% when compared to the final quarter of 1999. In the second and third quarters of 2000, construction output in the United Kingdom had

fallen (in comparison to the quarter before) by 0.9% and 1.3%.

In terms of growth between the final quarters of 1999 and 2000, the fastest expansion in construction output was recorded in Spain (7.1%), followed by Finland (5.3%), the Netherlands (4.6%) and Luxembourg (4.1%) - although there was growth of 10.1% in Italy between the third quarters of 1999 and 2000. Spain, Italy and the Netherlands reported rapid growth on the basis of a quarter on quarter growth rate throughout 2000. On the other hand, Finland and Luxembourg recorded high growth rates for the year, despite periods of reduced output (as measured by a quarter on quarter rate of change). This was particularly the case during the third quarter of 2000 in Finland.

	Quarter on quarter growth rates, seasonally adjusted series						Year on year growth rates, working day adjusted series					
	Q3-99	Q4-99	Q1-00	Q2-00	Q3-00	Q4-00	Q3-99	Q4-99	Q1-00	Q2-00	Q3-00	Q4-00
EU-15	0.8	0.9	0.8	-0.5	-0.8	2.4	2.6	4.5	4.7	1.9	0.4	1.9
EUR-11	0.9	0.7	0.5	0.3	0.4	0.7	2.5	4.6	4.6	1.9	0.6	2.2
B	5.1	-0.2	2.1	-2.2	0.6	2.6	3.4	14.5	6.4	4.2	1.2	2.3
DK	:	:	:	:	:	:	:	:	:	:	:	:
D	0.4	-0.2	-0.2	-3.0	-3.4	1.7	0.3	2.5	2.0	-2.7	-5.3	-3.3
EL (1)	:	:	:	:	:	:	:	:	:	:	:	:
E	0.1	2.1	2.3	1.5	1.2	2.0	6.6	5.8	7.2	6.2	7.1	7.1
F	0.9	1.1	-0.5	0.5	0.0	0.5	3.6	5.6	3.3	2.0	0.6	1.3
IRL (1)	:	:	:	:	:	:	:	:	:	:	:	:
I (2)	2.0	3.2	1.7	1.5	3.3	:	2.0	3.5	8.7	8.6	10.0	:
L	0.5	2.2	1.2	-0.4	1.3	1.4	1.5	9.2	7.1	2.2	3.6	4.1
NL	1.3	1.0	0.4	1.1	0.4	1.5	4.3	7.5	3.1	4.5	1.3	4.6
A	0.5	0.3	-1.5	-2.1	1.0	2.1	2.8	3.0	4.1	-3.5	-2.7	0.0
P (1)	:	:	:	:	:	:	:	:	:	:	:	:
FIN	-2.3	2.8	6.9	-0.9	-4.5	4.0	2.0	3.5	12.2	6.7	3.5	5.3
S (1)	:	:	:	:	:	:	:	:	:	:	:	:
UK	1.8	0.2	1.1	-0.9	-1.3	1.0	3.2	3.4	5.4	2.2	-1.1	-0.3

Table 2: Production volume index for construction, growth rates (%)

¹ Derogation not to provide this data until end 2001; ² 4 month delay permitted until end 2001.

Production indices for building

Output within the EU-15 building sector rose by 1.6% in the final quarter of 2000 (compared to the third quarter) and by 1.5% (compared to the final quarter of 1999). The German building sector reported a 4.0% reduction in output between the fourth quarters of 1999 and 2000, whilst production grew by 11.3% in Luxembourg and 8.8% in Belgium. Civil engineering output rose by 1.0% in the EU between the final quarters of 1999 and 2000.

	Quarter on quarter growth rates, seasonally adjusted series						Year on year growth rates, working day adjusted series					
	Q3-99	Q4-99	Q1-00	Q2-00	Q3-00	Q4-00	Q3-99	Q4-99	Q1-00	Q2-00	Q3-00	Q4-00
EU-15	1.0	1.2	1.5	-0.9	-0.4	1.6	3.3	5.1	5.5	2.7	1.1	1.5
EUR-11	1.0	1.2	1.4	-0.9	-0.4	1.6	3.3	5.1	5.5	2.7	1.1	1.5
B	7.0	-1.2	2.2	-1.4	-1.8	9.8	29.6	43.2	13.7	6.3	-3.2	8.8
DK	:	:	:	:	:	:	:	:	:	:	:	:
D	0.1	-0.3	0.2	-2.8	-3.4	0.7	-1.5	0.1	1.2	-2.5	-5.1	-4.0
EL (1)	:	:	:	:	:	:	:	:	:	:	:	:
E	2.1	2.7	2.5	1.9	1.0	0.7	10.2	8.4	10.9	9.7	8.4	6.0
F	-0.1	1.1	0.9	-0.6	-0.9	1.7	4.1	5.7	3.5	1.3	0.5	1.1
IRL (1)	:	:	:	:	:	:	:	:	:	:	:	:
I (2)	0.6	1.6	7.6	1.2	1.5	-4.6	2.5	3.2	11.6	11.3	12.4	5.4
L	-3.4	2.1	8.3	-5.9	4.2	4.7	-9.8	1.2	0.7	0.1	9.4	11.3
NL	0.3	1.3	0.1	1.2	1.0	1.2	1.8	7.3	0.8	2.9	3.4	4.4
A	0.7	-0.2	-0.5	-2.1	0.8	2.4	2.3	1.8	4.3	-3.0	-2.4	1.3
P (3)	:	:	:	:	:	:	:	:	:	:	:	:
FIN	-1.9	3.6	7.9	0.3	-5.4	3.3	1.9	3.8	12.8	10.1	5.8	5.8
S (4)	:	:	:	:	:	:	:	:	:	:	:	:
UK	:	:	:	:	:	:	:	:	:	:	:	:

Table 3: Production volume index for building, growth rates (%)

Production indices for civil engineering

	Quarter on quarter growth rates, seasonally adjusted series						Year on year growth rates, working day adjusted series					
	Q3-99	Q4-99	Q1-00	Q2-00	Q3-00	Q4-00	Q3-99	Q4-99	Q1-00	Q2-00	Q3-00	Q4-00
EU-15	0.9	0.5	-0.1	-0.2	0.0	0.6	3.6	6.2	3.5	0.4	-1.8	1.0
EUR-11	0.9	0.5	-0.1	-0.2	0.0	0.6	3.6	6.2	3.5	0.4	-1.8	1.0
B	9.2	4.9	-2.0	-4.8	-7.4	12.9	22.7	36.9	12.1	6.8	-9.5	-2.5
DK	:	:	:	:	:	:	:	:	:	:	:	:
D	0.8	0.2	-0.9	-3.6	-3.0	3.1	3.5	7.1	3.9	-2.9	-5.6	-2.2
EL (5)	:	:	:	:	:	:	:	:	:	:	:	:
E	-3.0	2.1	-0.5	-0.7	1.1	6.1	-0.2	-0.6	-2.4	-2.1	2.0	6.0
F	1.2	0.9	-0.1	1.1	-0.5	1.3	2.6	5.5	2.8	3.5	0.8	1.9
IRL (1)	:	:	:	:	:	:	:	:	:	:	:	:
I (6)	2.0	7.7	-6.6	0.1	4.1	:	0.5	4.0	1.7	2.5	4.8	:
L	1.0	1.6	9.8	-6.7	-5.2	0.1	13.8	17.9	14.1	4.3	-1.4	-2.7
NL	7.3	-2.2	2.8	0.9	-3.4	5.8	12.0	8.0	15.2	9.9	-4.7	5.1
A	-0.4	0.8	-2.9	-3.1	0.7	0.3	4.0	6.8	2.8	-5.0	-3.3	-3.9
P (3)	:	:	:	:	:	:	:	:	:	:	:	:
FIN	-3.8	-0.4	3.4	-5.8	-0.5	6.7	2.0	1.9	11.9	-6.6	-3.8	3.8
S (4)	:	:	:	:	:	:	:	:	:	:	:	:
UK	:	:	:	:	:	:	:	:	:	:	:	:

Table 4: Production volume index for civil engineering, growth rates (%)

¹ Derogation not to provide this data until June 2003; ² 1 month delay permitted until 2003; ³ Derogation until June 2002; ⁴ Derogation until end 2001; ⁵ Derogation until end 2002; ⁶ 4 month delay permitted until 2003.

New orders

The index of new orders rose in Germany in the final quarter of 2000 (compared to the quarter before) by 2.7%, following a series of five consecutive negative figures. In the United Kingdom demand fell in the third and fourth quarters by 4.2% and 6.5% (compared to the quarter before). After negative rates in the third quarter of 2000 (compared to the quarter before), both Spain (4.5%) and Luxembourg (24.2%) registered rapid growth of new orders (as had been the case in the first two quarters of 2000).

	Quarter on quarter growth rates, seasonally adjusted series						Year on year growth rates, gross series					
	Q3-99	Q4-99	Q1-00	Q2-00	Q3-00	Q4-00	Q3-99	Q4-99	Q1-00	Q2-00	Q3-00	Q4-00
EU-15 (1)	:	:	:	:	:	:	:	:	:	:	:	:
EUR-11 (1)	:	:	:	:	:	:	:	:	:	:	:	:
B	4.0	5.8	0.9	-5.0	11.1	-1.9	15.8	10.9	16.6	5.4	12.6	4.5
DK (2)	:	:	:	:	:	:	:	:	:	:	:	:
D	-2.7	-5.5	-2.6	-4.7	-5.8	2.7	-3.5	-6.2	-10.2	-13.5	-16.4	-10.6
EL (2)	:	:	:	:	:	:	:	:	:	:	:	:
E	-3.0	5.2	6.5	11.3	-9.1	4.5	-12.4	0.2	4.2	23.4	12.2	12.3
F (2)	:	:	:	:	:	:	:	:	:	:	:	:
IRL (3)	:	:	:	:	:	:	:	:	:	:	:	:
I (2)	:	:	:	:	:	:	:	:	:	:	:	:
L	-3.9	-30.0	33.2	11.1	-11.2	24.2	9.7	-42.4	-15.6	2.4	-11.8	73.2
NL (3)	:	:	:	:	:	:	:	:	:	:	:	:
A	4.5	0.0	-1.1	3.6	-1.4	2.8	14.2	14.7	4.7	8.2	0.1	5.3
P (4)	:	:	:	:	:	:	:	:	:	:	:	:
FIN (5)	:	:	:	:	:	:	:	:	:	:	:	:
S (6)	:	:	:	:	:	:	:	:	:	:	:	:
UK	-5.0	2.7	0.1	11.4	-4.2	-6.5	-15.3	-11.2	-1.2	8.7	9.8	-0.2

Table 5: New orders index for construction, growth rates (%)

Employment

	Quarter on quarter growth rates, seasonally adjusted series						Year on year growth rates, gross series					
	Q3-99	Q4-99	Q1-00	Q2-00	Q3-00	Q4-00	Q3-99	Q4-99	Q1-00	Q2-00	Q3-00	Q4-00
EU-15	0.4	0.3	0.7	0.2	-0.7	-0.2	2.8	1.3	1.9	1.6	0.5	0.0
EUR-11	:	:	:	:	:	:	:	:	:	:	:	:
B	2.9	1.8	0.6	1.0	0.9	1.6	8.4	9.6	8.2	6.3	4.1	4.2
DK	1.1	0.2	4.7	-1.9	-2.1	1.1	1.1	0.6	6.0	4.0	0.7	1.6
D	-0.5	-1.8	-0.7	-2.1	-2.1	-2.4	0.5	-3.3	-3.1	-4.9	-6.3	-7.3
EL (7)	:	:	:	:	:	:	:	:	:	:	:	:
E	:	:	:	:	:	:	:	:	:	:	:	:
F	0.5	0.9	0.8	1.2	1.3	1.3	2.5	2.9	1.7	2.9	4.9	5.2
IRL	2.2	0.8	2.1	1.3	1.1	0.7	7.8	5.3	6.8	6.9	5.7	4.9
I	:	:	:	:	:	:	:	:	:	:	:	:
L	0.3	0.5	0.4	0.4	0.3	0.3	1.7	1.5	1.6	1.7	1.6	1.3
NL	0.5	0.4	0.9	0.5	0.4	0.5	2.3	1.7	2.6	2.4	2.2	2.3
A	-1.2	-0.7	-0.1	-0.7	-0.2	0.1	-4.3	-4.8	-1.9	-2.4	-1.9	-1.4
P (4)	:	:	:	:	:	:	:	:	:	:	:	:
FIN	4.1	-0.3	1.2	:	:	:	10.2	5.9	3.9	:	:	:
S (5)	:	:	:	:	:	:	:	:	:	:	:	:
UK	3.4	2.1	1.7	1.7	-1.6	-1.1	2.8	4.4	8.0	9.8	4.0	0.3

Table 6: Employment index for construction, growth rates (%)

¹ Data available present less than 60% of the weight of all Member States, thus European aggregates are not calculated; ² Derogation not to provide this data until end 2002; ³ Derogation until mid-2001; ⁴ Derogation until June 2002; ⁵ Derogation until end 2001; ⁶ Derogation until April 2002; ⁷ Derogation until June 2003.

Hours worked

The index of hours worked generally reflects the level of construction activity, with increases (compared to a year before) recorded in Belgium (6.6%), Luxembourg (3.1%) and the Netherlands (2.6%), whilst there was a reduction in Germany (8.5%) and in Finland (8.3%).

	Quarter on quarter growth rates, seasonally adjusted series						Year on year growth rates, gross series					
	Q3-99	Q4-99	Q1-00	Q2-00	Q3-00	Q4-00	Q3-99	Q4-99	Q1-00	Q2-00	Q3-00	Q4-00
EU-15 (1)	:	:	:	:	:	:	:	:	:	:	:	:
EUR-11 (1)	:	:	:	:	:	:	:	:	:	:	:	:
B	5.8	4.2	-1.4	0.5	1.0	5.3	27.4	39.2	13.7	8.3	2.7	6.6
DK (2)	:	:	:	:	:	:	:	:	:	:	:	:
D	-0.6	-1.9	0.0	-4.5	-3.2	-1.1	2.5	-0.8	-0.3	-6.4	-8.6	-8.5
EL (3)	:	:	:	:	:	:	:	:	:	:	:	:
E	:	:	:	:	:	:	:	:	:	:	:	:
F (4)	:	:	:	:	:	:	:	:	:	:	:	:
IRL	1.9	-0.1	-0.1	-0.1	-0.5	:	1.5	2.0	0.9	1.6	-0.9	:
I (3)	:	:	:	:	:	:	:	:	:	:	:	:
L	1.2	1.7	1.1	-0.5	0.0	1.5	0.5	9.4	8.4	2.5	0.0	3.1
NL	0.7	0.6	0.7	0.7	0.7	0.7	2.7	2.3	3.0	2.6	2.4	2.6
A	-0.7	-1.6	0.3	-1.0	-0.9	0.6	-4.4	-4.5	-0.1	-2.7	-5.2	0.0
P (5)	:	:	:	:	:	:	:	:	:	:	:	:
FIN	3.0	-0.2	0.0	-2.8	-2.7	-2.3	10.7	6.6	5.8	-0.1	-5.9	-8.3
S (2)	:	:	:	:	:	:	:	:	:	:	:	:
UK	0.3	0.9	0.1	2.6	1.4	-1.7	0.7	1.1	1.3	3.9	5.2	2.4

Table 7: Hours worked index for construction, growth rates (%)

Wages and salaries

There was a rapid expansion of wages and salaries in Belgium (11.9%), Denmark (8.8%), Finland (8.5%) in the final quarter of 2000 (compared to the same quarter of a year before), as well as in Ireland (7.6%, third quarter of 2000) and the United Kingdom (19.4%, second quarter of 2000).

	Quarter on quarter growth rates, seasonally adjusted series						Year on year growth rates, gross series					
	Q3-99	Q4-99	Q1-00	Q2-00	Q3-00	Q4-00	Q3-99	Q4-99	Q1-00	Q2-00	Q3-00	Q4-00
EU-15	1.2	0.8	1.1	0.8	:	:	5.0	3.1	5.5	4.0	:	:
EUR-11	0.5	-0.2	0.1	-0.5	-0.1	0.4	2.9	1.0	3.2	0.0	-1.4	-0.9
B	3.5	2.5	2.3	1.1	2.2	5.0	13.0	18.5	15.1	8.8	6.4	11.9
DK	2.8	0.5	3.3	2.6	1.3	3.3	6.5	2.2	10.1	11.9	6.6	8.8
D	-0.7	-2.1	0.7	-2.5	-2.1	-2.0	1.6	-1.7	-0.1	-4.5	-6.0	-6.1
EL (3)	:	:	:	:	:	:	:	:	:	:	:	:
E	:	:	:	:	:	:	:	:	:	:	:	:
F (4)	:	:	:	:	:	:	:	:	:	:	:	:
IRL	7.9	2.8	0.1	2.7	1.8	:	13.5	15.4	15.1	14.0	7.6	:
I	0.0	0.5	:	:	:	:	2.1	1.7	:	:	:	:
L	1.7	3.3	-0.6	0.8	1.5	-0.4	3.4	8.3	3.0	5.0	5.4	1.1
NL	1.9	1.1	3.1	1.3	1.0	2.1	7.2	5.6	11.1	7.3	5.9	7.3
A	-0.6	0.0	0.4	0.1	-0.2	-0.1	-2.3	-2.5	0.0	0.5	0.1	-0.4
P (5)	:	:	:	:	:	:	:	:	:	:	:	:
FIN	5.3	-0.3	5.8	4.3	-1.2	-0.4	9.4	7.9	14.2	17.1	8.1	8.5
S (2)	:	:	:	:	:	:	:	:	:	:	:	:
UK	11.4	2.3	2.9	1.9	:	:	14.0	12.1	12.6	19.4	:	:

Table 8: Wages and salaries index for construction, growth rates (%)

¹ Data available present less than 60% of the weight of all Member States, thus European aggregates are not calculated; ² Derogation not to provide this data until end 2001; ³ Derogation until June 2003; ⁴ Derogation until end 2000; ⁵ Derogation until June 2002.

Construction costs

Construction costs for residential buildings in the EU rose by 1.0% in the final quarter of 2000 (compared to the third quarter), continuing a trend of price increases of between 0.7% and 1.0% in the EU during 2000. Costs for residential buildings in the EU rose by 3.5% between the final quarters of 1999 and 2000.

	Quarter on quarter growth rates, gross series						Year on year growth rates, gross series					
	Q3-99	Q4-99	Q1-00	Q2-00	Q3-00	Q4-00	Q3-99	Q4-99	Q1-00	Q2-00	Q3-00	Q4-00
EU-15	0.8	0.4	1.0	0.7	0.7	1.0	2.6	2.5	3.2	3.0	2.9	3.5
EUR-11	0.5	-0.1	1.1	0.5	0.5	0.9	1.2	0.9	2.0	2.1	2.0	3.0
B (1)	:	:	:	:	:	:	:	:	:	:	:	:
DK	0.0	0.6	-1.1	0.6	2.0	0.9	4.0	3.3	1.4	0.1	2.1	2.4
D (2)	0.1	0.0	0.1	0.2	0.0	0.0	-0.5	-0.2	0.2	0.4	0.3	0.3
EL	0.6	0.5	:	:	:	:	3.5	3.3	:	:	:	:
E (3)	0.9	0.4	2.4	0.7	0.6	0.4	1.9	2.8	4.3	4.5	4.3	4.3
F (2)	0.6	-1.4	1.7	0.6	0.4	3.1	2.2	-0.8	1.1	1.4	1.2	5.8
IRL (1)(4)	1.4	1.9	1.0	0.5	0.5	:	5.2	6.8	7.7	4.8	3.8	:
I	0.4	0.5	1.3	0.5	0.7	0.6	1.6	1.7	3.0	2.7	3.0	3.1
L (2)	1.2	0.0	1.5	0.0	:	:	2.3	2.3	2.7	2.7	:	:
NL	1.1	0.6	1.1	0.5	1.5	:	1.9	2.7	3.4	3.3	3.8	:
A	1.0	0.2	0.2	0.8	0.6	0.5	2.8	3.1	3.1	2.2	1.8	2.1
P (5)	:	:	:	:	:	:	:	:	:	:	:	:
FIN (4)	0.8	0.4	0.7	1.2	0.7	0.6	1.4	1.9	2.5	3.1	3.0	3.3
S	0.4	0.8	1.1	1.6	0.8	0.7	2.2	2.6	3.3	3.9	4.3	4.2
UK (2)	2.5	2.4	0.8	:	:	:	8.8	9.5	8.5	:	:	:

Table 9: Construction costs index for residential buildings, growth rates (%)

Building permits

There was a large reduction in the number of building permits issued in the EU in the final quarter of 2000, down 7.1% in the EU and 6.7% in the euro-zone (compared to the same quarter of 1999), continuing the pattern of reductions that was visible in the previous two quarters.

	Quarter on quarter growth rates, seasonally adjusted series						Year on year growth rates, gross series					
	Q3-99	Q4-99	Q1-00	Q2-00	Q3-00	Q4-00	Q3-99	Q4-99	Q1-00	Q2-00	Q3-00	Q4-00
EU-15	-3.4	2.0	0.3	-3.6	-1.4	-2.5	-2.2	-7.6	0.5	-4.7	-2.8	-7.1
EUR-11	-3.8	2.5	-0.4	-3.5	-1.2	-1.7	-2.0	-9.2	0.1	-5.2	-2.7	-6.7
B	0.5	5.8	0.0	-14.2	0.3	-3.6	10.1	29.1	5.1	-8.7	-8.6	-18.3
DK	9.3	-22.3	6.1	5.6	-15.1	9.4	-1.0	-8.0	-7.1	-4.9	-26.2	4.0
D	-3.8	-4.6	-10.2	-17.8	-4.6	-13.0	-7.0	-10.6	-16.8	-32.9	-32.5	-38.8
EL	:	:	:	:	:	:	:	:	:	:	:	:
E	-18.0	18.7	-0.1	0.8	1.0	:	-0.2	9.5	14.1	-2.0	20.7	:
F	3.8	5.2	4.0	6.6	-0.1	-1.9	-1.1	-29.8	-8.5	21.1	16.5	8.5
IRL	7.0	9.3	-1.2	0.6	:	:	-54.3	-44.1	27.5	16.3	:	:
I (6)	11.1	10.2	:	:	:	:	15.1	17.3	:	:	:	:
L	-2.2	33.8	-28.5	41.3	8.0	:	-2.6	26.8	-40.1	38.2	54.6	:
NL	-0.8	-14.7	17.1	-2.6	:	:	16.0	-17.0	19.6	-3.1	:	:
A (7)	:	:	:	:	:	:	:	:	:	:	:	:
P	1.3	-1.8	2.5	-9.6	-3.3	-1.6	5.6	6.3	6.9	-8.6	-12.6	-12.0
FIN	16.4	-4.5	1.7	-7.1	-14.3	7.3	22.7	19.4	23.8	3.7	-28.1	-16.2
S (8)	:	:	:	:	:	:	26.6	-8.2	46.1	35.2	-14.1	6.8
UK (9)	-1.6	2.7	2.2	-14.1	-1.5	0.0	-1.7	6.1	3.8	-3.4	-2.8	-16.6

Table 10: Number of residential building permits issued, growth rates (%)

¹ Derogation until end 2001; ² Output prices for new residential buildings are used as a proxy for construction costs; ³ Input prices for new residential building construction; ⁴ Input prices for 1-dwelling residential buildings; ⁵ Derogation until June 2002; ⁶ 3 month delay permitted until June 2003; ⁷ Data available from Q1-00 onwards; ⁸ Data available from 1996 onwards as a gross series; ⁹ Building starts for houses.

Indices for building permits in square metres

The reduction in the number of permits issued was also reflected in the area for which permits for residential buildings were granted, with the total area declining in all seven countries that were able to report data for the third or fourth quarters of 2000.

	Q1-98	Q2-98	Q3-98	Q4-98	Q1-99	Q2-99	Q3-99	Q4-99	Q1-00	Q2-00	Q3-00	Q4-00
EU-15	:	:	:	:	:	:	:	:	:	:	:	:
EUR-11	:	:	:	:	:	:	:	:	:	:	:	:
B	74.1	98.3	92.8	79.3	95.8	98.8	96.4	93.5	94.8	90.4	86.1	75.9
DK	185.2	237.0	180.8	154.5	146.7	205.5	169.7	126.7	136.3	186.5	137.5	114.4
D	74.7	100.1	93.1	87.9	74.5	91.8	91.3	83.6	83.9	80.0	77.9	66.5
EL	128.6	209.3	166.9	146.4	120.1	:	:	:	:	:	:	:
E	114.2	130.8	125.7	152.3	127.6	168.6	127.7	167.7	146.5	166.0	149.6	:
F (1)	:	:	:	:	:	:	:	:	:	:	:	:
IRL	160.7	161.3	221.8	164.4	187.2	197.2	209.3	176.0	200.4	:	:	:
I	64.4	69.0	61.9	70.2	64.3	76.7	65.8	83.5	:	:	:	:
L	95.5	122.6	212.9	105.7	93.9	106.9	85.1	210.0	78.1	135.0	97.7	:
NL	95.7	87.6	92.5	127.4	86.8	104.2	108.5	116.9	95.0	98.7	:	:
A (2)	:	:	:	:	:	:	:	:	:	:	:	:
P	126.2	138.6	148.0	148.0	146.2	157.5	157.3	161.3	158.8	148.4	145.1	144.0
FIN	152.2	267.1	174.1	130.6	169.9	301.3	207.3	153.6	215.5	339.9	170.9	136.5
S (3)	:	:	:	:	:	:	:	:	:	:	:	:
UK (2)	:	:	:	:	:	:	:	:	:	:	:	:

Table 11: Total area for which residential building permits were granted (index, 1995=100)

¹ Data available from 1998 onwards – however, due to the lack of a value in the base year it is impossible to compute an index;

² Derogation until June 2003; ³ Data available from 1996 onwards - hence, due to the lack of a value in the base year it is impossible to compute an index.

Definitions

Production: measures output volume through the trend in value added at factor costs.

Building and civil engineering production: the two main Sections in the classification of types of construction (CC).

New orders: an indication of future production. An order is the value of the contract linking a producer and a third party for the provision of goods and services. The order is accepted if there is sufficient evidence for a valid agreement.

Employment: number of persons employed is the total number of persons working within and outside the observation unit (including working proprietors, sales representatives and so on). It also includes persons absent for a short, definite period or persons on strike. Part time, trainee and seasonal workers are also included.

Hours worked: aggregate number of hours worked, excluding hours paid but not actually worked such as for meals, holidays and sick leave.

Wages and salaries: total remuneration, in cash or in kind, payable to all persons counted on the payroll, in return for work done during the reference period. Includes taxes and social contributions paid by the employee.

Construction costs: measure the evolution of the costs of the factors employed in the activity of construction and incurred by the contractor. These factors include, amongst others, materials, wages and salaries, plant and equipment hire; **output prices:** show the evolution of prices paid by the client to the contractor.

Building permits: show the future development of construction activity. A building permit is an authorisation to start work on a building project.

For more information please consult the following web site:

<http://forum.europa.eu.int/irc/dsis/bmethods/info/data/new/embs/sts/part3a.html>

e-mail: digna.amil@cec.eu.int

Further information:

➤ Reference publications

Title Monthly Panorama of European Business – Annual subscription
 Catalogue No KS-AM-01-000-EN-C Price EUR 162

➤ Databases

NewCronos Theme 4
 Domain EBT (European Business Trends)

To obtain information or to order publications, databases and special sets of data, please contact the **Data Shop** network:

BELGIQUE/BELGIË	DANMARK	DEUTSCHLAND	ESPAÑA	FRANCE	ITALIA – Roma
Eurostat Data Shop Bruxelles/Brussel Planistat Belgique Rue du Commerce 124 Handelsstraat 124 B-1000 BRUXELLES / BRUSSEL Tel. (32-2) 234 67 50 Fax (32-2) 234 67 51 E-mail: datashop@planistat.be	DANMARKS STATISTIK Bibliotek og Information Eurostat Data Shop Sejrogade 11 DK-2100 KØBENHAVN Ø Tlf. (45) 39 17 30 30 Fax (45) 39 17 30 03 E-mail: bib@dst.dk	STATISTISCHES BUNDESAMT Eurostat Data Shop Berlin Otto-Braun-Straße 70-72 (Eingang: Karl-Marx-Allee) D-10178 BERLIN Tel. (49) 1888 644 94 27/28 Fax (49) 1888-644 94 30 E-Mail: datashop@statistik-bund.de	INE Eurostat Data Shop Paseo de la Castellana, 183 Oficina 009 Entrada por Estébanez Calderón E-28046 MADRID Tel. (34) 91 583 91 67 Fax (34) 91 579 71 20 E-mail: datashop.eurostat@ine.es	INSEE Info Service Eurostat Data Shop 195, rue de Bercy Tour Gamma A F-75582 PARIS CEDEX 12 Tél. (33) 1 53 17 88 44 Fax (33) 1 53 17 88 22 E-mail: datashop@insee.fr	ISTAT Centro di Informazione Statistica Sede di Roma, Eurostat Data Shop Via Cesare Balbo, 11a I-00184 ROMA Tel. (39) 06 46 73 31 02/06 Fax (39) 06 46 73 31 01/07 E-mail: dipdiff@stat.it
ITALIA – Milano	LUXEMBOURG	NEDERLAND	NORGE	PORTUGAL	SCHWEIZ/SUISSE/SVIZZERA
ISTAT Ufficio Regionale per la Lombardia Eurostat Data Shop Via Fieno 3 I-20123 MILANO Tel. (39) 02 80 61 32 460 Fax (39) 02 80 61 32 304 E-mail: mileuro@tin.it	Eurostat Data Shop Luxembourg BP 453 L-2014 LUXEMBOURG 4, rue Alphonse Weicker L-2721 LUXEMBOURG Tel. (352) 43 35-2251 Fax (352) 43 35-22221 E-mail: dslux@eurostat.datashop.lu	STATISTICS NETHERLANDS Eurostat Data Shop-Voorburg Postbus 4000 2270 JM VOORBURG Nederland Tel. (31-70) 337 49 00 Fax (31-70) 337 59 84 E-mail: datashop@CBS.nl	Statistics Norway Library and Information Centre Eurostat Data Shop Kongens gate 6 Boks 8131 Dep. N-0033 OSLO Tel. (47) 21 09 46 42/43 Fax (47) 21 09 45 04 E-mail: Datashop@ssb.no	Eurostat Data Shop Lisboa INE/Serviço de Difusão Av. António José de Almeida, 2 P-1000-043 LISBOA Tel. (351) 21 842 61 00 Fax (351) 21 842 63 64 E-mail: data.shop@ine.pt	Statistisches Amt des Kantons Zürich, Eurostat Data Shop Bleicherweg 5 CH-8090 Zürich Tel. (41-1) 225 12 12 Fax (41-1) 225 12 99 E-mail: datashop@statistik.zh.ch Internet: http://www.zh.ch/statistik
SUOMI/FINLAND	SVERIGE	UNITED KINGDOM	UNITED KINGDOM	UNITED STATES OF AMERICA	
STATISTICS FINLAND Eurostat Data Shop Helsinki Tilastokijasto PL 2B FIN-00022 Tilastokeskus Työpajakatu 13 B, 2, Kerros, Helsinki P. (358-9) 17 34 22 21 F. (358-9) 17 34 22 79 Sähköposti: datashop.tilastokeskus.fi@tilastokeskus.fi Internet: http://www.tilastokeskus.fi/tk/ik/datasshop.html	STATISTICS SWEDEN Information service Eurostat Data Shop Karlavägen 100 - Box 24 300 S-104 51 STOCKHOLM Tfn (46-8) 50 69 48 01 Fax (46-8) 50 69 48 99 E-post: infoervice@scb.se Internet: http://www.scb.se/info/datasshop/pleudatashop.asp	Eurostat Data Shop Enquiries & advice and publications Office for National Statistics Customers & Electronic Services Unit 1 Drummond Gate - B1/05 LONDON SW1V 2QQ United Kingdom Tel. (44-20) 75 33 56 76 Fax (44-1633) 81 27 62 E-mail: eurostat.datasshop@ons.gov.uk	Eurostat Data Shop Electronic Data Extractions, Enquiries & advice - R.CADE 1L Mounjōy Research Centre University of Durham DURHAM DH1 3SW United Kingdom Tel: (44-191) 374 73 50 Fax: (44-191) 384 49 71 E-mail: r.cade@dur.ac.uk Internet: http://www.icaade.dur.ac.uk	HAVER ANALYTICS Eurostat Data Shop 60 East 42nd Street Suite 3310 NEW YORK, NY 10165 USA Tel. (1-212) 986 93 00 Fax (1-212) 986 69 81 E-mail: eurodata@haver.com	

Media Support Eurostat (for professional journalists only):

Bech Building Office A3/48 - L-2920 Luxembourg - Tel. (352) 4301 33408 - Fax (352) 4301 32649 - e-mail: eurostat-mediasupport@cec.eu.int

For information on methodology

Gunter Schäfer, Eurostat/D3, L-2920 Luxembourg, Tel. (352) 4301 33566, Fax (352) 4301 34359, E-mail: gunter.schaefer@cec.eu.int
 ORIGINAL: English

Please visit our web site at www.europa.eu.int/comm/eurostat/ for further information!

A list of worldwide sales outlets is available at the **Office for Official Publications of the European Communities**.

2 rue Mercier - L-2985 Luxembourg
 Tel. (352) 2929 42118 Fax (352) 2929 42709
 Internet Address <http://eur-op.eu.int/fr/general/s-ad.htm>
 e-mail: info.info@cec.eu.int

BELGIQUE/BELGIË - DANMARK - DEUTSCHLAND - GREECE/ELLADA - ESPAÑA - FRANCE - IRELAND - ITALIA - LUXEMBOURG - NEDERLAND - ÖSTERREICH
 PORTUGAL - SUOMI/FINLAND - SVERIGE - UNITED KINGDOM - ISLAND - NORGE - SCHWEIZ/SUISSE/SVIZZERA - BALGARJA - CESHÁ REPUBLIKA - CYPRUS
 EESTI - HRVATSKA - MAGYARORSZÁG - MALTA - POLSKA - ROMÂNIA - RUSSIA - SLOVAKIA - SLOVENIA - TÜRKIYE - AUSTRALIA - CANADA - EGYPT - INDIA
 ISRAËL - JAPAN - MALAYSIA - PHILIPPINES - SOUTH KOREA - THAILAND - UNITED STATES OF AMERICA

Order form

I would like to subscribe to Statistics in focus (from 1.1.2001 to 31.12.2001):
 (for the Data Shop and sales office addresses see above)

Formula 1: All 9 themes (approximately 140 issues)

Paper: EUR 360
 Language required: DE EN FR

Formula 2: One or more of the following seven themes:

- Theme 1 'General statistics'
 Paper: EUR 42
 - Theme 2 'Economy and finance'
 - Theme 3 'Population and social conditions'
 - Theme 4 'Industry, trade and services'
 - Theme 5 'Agriculture and fisheries'
 - Theme 6 'External trade'
 - Theme 8 'Environment and energy'
 Paper: EUR 84
- Language required: DE EN FR

Please send me a free copy of 'Eurostat mini-guide' (catalogue containing a selection of Eurostat products and services)
 Language required: DE EN FR

I would like a free subscription to 'Statistical References', the information letter on Eurostat products and services
 Language required: DE EN FR

Mr Mrs Ms
 (Please use block capitals)
 Surname: _____ Forename: _____
 Company: _____ Department: _____
 Function: _____
 Address: _____
 Post code: _____ Town: _____
 Country: _____
 Tel.: _____ Fax: _____
 E-mail: _____

Payment on receipt of invoice, preferably by:

- Bank transfer
 Visa Eurocard

Card No: _____ Expires on: ____/____/____

Please confirm your intra-Community VAT number:

If no number is entered, VAT will be automatically applied. Subsequent reimbursement will not be possible.

Statistics in focus can be downloaded (pdf file) free of charge from the Eurostat web site. You only need to register. For other solutions, contact your Data Shop.