

# Business statistics

## Quarterly labour input

*Gunter Schüfer*

For industry (mining and quarrying, manufacturing and electricity, gas and water supply), the index of employment fell in the third quarter of 2000 by 0.3% for the EU-15 and 0.2% for the euro-zone, compared to the previous quarter. For hours worked, a decline of 0.4% for the EU-15 and 0.2% for the Euro-zone was observed. For wages and salaries, the decline was 0.4% (EU-15) and 0.2% (euro-zone). The picture for the annual comparison is mixed with a declining tendency for employment and growth for wages and salaries.

|                  | Growth rate, quarter compared to previous quarter, seasonally adjusted |      |        |      | Growth rate, year on year, gross data |      |        |      |
|------------------|--|------|--------|------|---------------------------------------|------|--------|------|
|                  | EU-15  |      | EUR-11 |      | EU-15                                 |      | EUR-11 |      |
| Employment       | Q3-00  | -0.3 | Q3-00  | -0.2 | Q3-00                                 | -0.5 | Q3-00  | 0.0  |
| Hours worked     | Q3-00  | -0.4 | Q3-00  | -0.2 | Q3-00                                 | -1.2 | Q3-00  | -0.8 |
| Wages & salaries | Q3-00  | -0.4 | Q3-00  | -0.2 | Q3-00                                 | 2.3  | Q3-00  | 2.2  |

Table 1: Recent growth rates for total industry (%)

### Employment in industry

Having increased in the first quarter of 2000 compared to the last quarter of 1999, EU-15 industrial employment in quarters 2 and 3 of 2000 recorded a negative rate of change compared to the previous quarters, a return to the negative rates of change experienced throughout 1999. This fall in the industrial employment index in the EU-15 contrasts with a smaller fall in the euro-zone index (-0.2%) which continues a pattern established in the fourth quarter of 1998 since when this index in the euro-zone has consistently fallen less or grown more than in the EU-15.

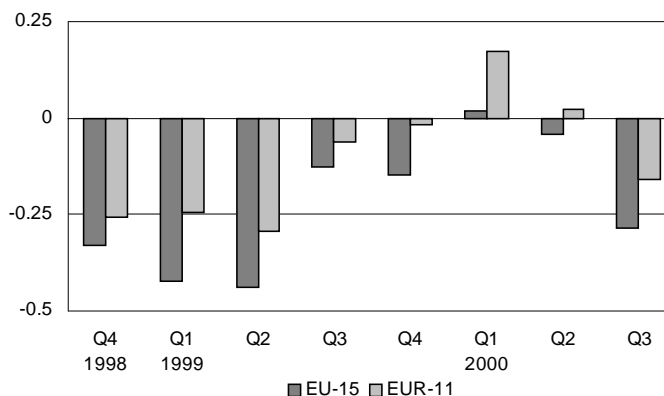


Figure 1: Employment index for total industry, growth rates, quarter compared to previous quarter, seasonally adjusted (%)

Data extracted on: 26.01.2001

## Statistics in focus

### INDUSTRY, TRADE AND SERVICES

THEME 4 – 10/2001

## Contents

|  |   |
|--|---|
| Employment index .....                       | 1 |
| Industrial hours worked.....                 | 4 |
| Industrial wages and salaries ..             | 5 |
| EU-15 indices for industrial Divisions ..... | 6 |



Looking at the main industrial groupings (MIGS) within total industry, the EU-15 consumer non-durable goods industries recorded a fall in the third quarter compared to the second quarter continuing the trend of no growth since the first quarter of 1999. This contributed to a reduction of 2.1% in the third quarter when compared to a year earlier, the largest fall for the MIGS. By contrast the consumer durable goods industries recorded a quarter on quarter fall of 0.2% after four consecutive periods of growth. Due to this earlier growth, employment in these industries increased by 0.2% in the year to the third quarter of 2000. For the euro-zone the employment index in the intermediate goods industries continued to grow in the third quarter compared to the second quarter of 2000 (0.2%) and growth in the year to the third quarter of 2000 was much higher than in the EU-15, reaching 0.4%.

|                              | Growth rate, quarter compared to previous quarter, seasonally adjusted |       |       |       |       |       | Growth rate, year on year, gross data |       |       |       |       |       |
|------------------------------|--|-------|-------|-------|-------|-------|---------------------------------------|-------|-------|-------|-------|-------|
|                              | Q2-99  | Q3-99 | Q4-99 | Q1-00 | Q2-00 | Q3-00 | Q2-99                                 | Q3-99 | Q4-99 | Q1-00 | Q2-00 | Q3-00 |
| EU-15 Total industry         | -0.4   | -0.1  | -0.1  | 0.0   | 0.0   | -0.3  | -1.2                                  | -1.3  | -1.2  | -0.7  | -0.3  | -0.5  |
| Intermediate goods ind.      | -0.5   | -0.4  | -0.2  | 0.0   | 0.1   | 0.1   | -1.0                                  | -1.6  | -1.5  | -1.1  | -0.5  | 0.0   |
| Capital goods ind.           | -0.4   | -0.1  | 0.2   | 0.3   | 0.0   | -0.2  | -1.0                                  | -1.1  | -0.8  | -0.1  | 0.3   | 0.3   |
| Cons. durable goods ind.     | -0.2   | 0.2   | 0.0   | 0.2   | 0.2   | -0.2  | -0.4                                  | -0.3  | -0.1  | 0.3   | 0.8   | 0.2   |
| Cons. non-durable goods ind. | -0.6   | -0.4  | -0.6  | -0.4  | -0.5  | -0.6  | -1.6                                  | -1.7  | -1.9  | -2.0  | -2.0  | -2.1  |
| EUR-11 Total industry        | -0.3   | -0.1  | 0.0   | 0.2   | 0.0   | -0.2  | -0.8                                  | -0.9  | -0.6  | -0.2  | 0.1   | 0.0   |
| Intermediate goods ind.      | -0.3   | -0.3  | -0.2  | 0.1   | 0.2   | 0.2   | -0.7                                  | -1.1  | -1.1  | -0.6  | -0.2  | 0.4   |
| Capital goods ind.           | -0.1   | 0.1   | 0.2   | 0.3   | 0.3   | 0.3   | -0.5                                  | -0.5  | -0.1  | 0.5   | 0.9   | 1.0   |
| Cons. durable goods ind.     | -0.1   | 0.1   | 0.0   | 0.1   | 0.1   | 0.0   | -0.4                                  | -0.2  | -0.1  | 0.2   | 0.4   | 0.1   |
| Cons. non-durable goods ind. | -0.5   | -0.4  | -0.5  | -0.3  | -0.5  | -0.4  | -1.0                                  | -1.2  | -1.4  | -1.6  | -1.7  | -1.8  |

Table 2: Employment index for MIGS, growth rates (%)

In Italy and the United Kingdom the total industry employment index fell as it had done every quarter for more than two years. In the year to the third quarter of 2000 the index had fallen by 2.4% in both of these Member States. Growth in industrial employment was recorded in the third quarter of 2000 in Germany, France and Spain, the third successive quarter of growth in Germany and the fifth in France. Spain witnessed a continued growth in the last 6 quarters.

|       | Growth rate, quarter compared to previous quarter, seasonally adjusted |       |       |       |       |       | Growth rate, year on year, gross data |       |       |       |       |       |
|-------|--|-------|-------|-------|-------|-------|---------------------------------------|-------|-------|-------|-------|-------|
|       | Q2-99  | Q3-99 | Q4-99 | Q1-00 | Q2-00 | Q3-00 | Q2-99                                 | Q3-99 | Q4-99 | Q1-00 | Q2-00 | Q3-00 |
| EU-15 | -0.4   | -0.1  | -0.1  | 0.0   | 0.0   | -0.3  | -1.2                                  | -1.3  | -1.2  | -0.7  | -0.3  | -0.5  |
| B     | 0.1  | 0.7   | 0.1   | 0.2   | 0.3   | :     | -0.2                                  | 1.0   | 0.7   | 1.1   | 1.3   | :     |
| DK    | -2.2   | 1.9   | -2.3  | 0.9   | 0.6   | -1.4  | 1.2                                   | -1.9  | -4.9  | -1.8  | 1.0   | -2.4  |
| D     | -0.6   | -0.2  | -0.1  | 0.0   | 0.2   | 0.1   | -0.8                                  | -1.1  | -1.0  | -0.9  | -0.1  | 0.1   |
| EL    | :  | :     | :     | :     | :     | :     | :                                     | :     | :     | :     | :     | :     |
| E     | 0.2  | 0.3   | 0.7   | 1.5   | 0.8   | 0.6   | 2.6                                   | 1.9   | 2.1   | 2.7   | 3.3   | 3.5   |
| F     | -0.1   | 0.1   | 0.1   | 0.4   | 0.4   | 0.5   | -0.4                                  | -0.2  | 0.1   | 0.6   | 1.0   | 1.4   |
| IRL   | -0.1   | :     | :     | :     | :     | :     | 0.2                                   | :     | :     | :     | :     | :     |
| I     | -0.3   | -0.4  | -0.5  | -0.4  | -0.9  | -0.6  | -3.0                                  | -2.9  | -2.3  | -1.5  | -2.2  | -2.4  |
| L     | 0.3  | 0.4   | -0.2  | 0.6   | 0.5   | 0.4   | 1.6                                   | 1.3   | 1.3   | 1.1   | 1.3   | 1.3   |
| NL    | 0.2  | 0.1   | 0.0   | -0.1  | 0.2   | 0.2   | 0.4                                   | 0.4   | 0.5   | 0.2   | 0.2   | 0.3   |
| A     | -0.5   | -0.4  | 0.0   | 0.1   | 0.5   | 0.2   | -1.6                                  | -1.8  | -1.7  | -0.8  | 0.3   | 0.8   |
| P     | -0.9   | -0.7  | -0.8  | -0.3  | -0.5  | -0.5  | -3.0                                  | -3.2  | -3.6  | -2.6  | -2.2  | -2.1  |
| FIN   | 3.3  | 2.2   | -0.4  | -1.8  | 2.2   | -0.2  | 2.8                                   | 3.2   | 4.4   | 3.2   | 2.2   | -0.2  |
| S     | :  | :     | :     | :     | :     | :     | :                                     | :     | :     | :     | :     | :     |
| UK    | -1.0   | -0.7  | -0.6  | -0.5  | -0.4  | -1.0  | -3.3                                  | -3.6  | -3.2  | -2.7  | -2.2  | -2.4  |

Table 3: Employment index for total industry, growth rates (%)

## Employment in services

Employment in retail trade and repair increased by 0.8% both for the EU-15 and the euro-zone in the 3<sup>rd</sup> quarter of 2000. This amounted to an increase of 5.0% and 5.1% respectively for the year if compared to the 3<sup>rd</sup> quarter 1999. The highest growth rates could be observed in Italy and Spain (8.9% and 10.1%). Finland showed a moderate annual growth of 0.9% while the employment in the retail trade declined by 0.1% over the year in Germany.

An extension in the entire distributive trades sector that includes wholesales and motor trades as well as retail trade shows increased employment in Italy in the third quarter of 2000 (1.7%). Allied to increases of 2.7% and 2.4% in the first two quarters of the year and smaller increases at the end of 1999, the growth in Italian distribution employment in the year to the third quarter of 2000 was 7.7%. In comparison, employment in distribution in France and the Netherlands also grew in the year to the third quarter of 2000, by 3.6% and 3.4% respectively.

The Italian employment index also grew significantly in the hotels and restaurants industry (6.3% for the year). The fastest annual growth in services employment in France and the Netherlands was recorded in business services (7.7% and 5.7% respectively). Across the five broad service headings for available data, the only negative rates of change recorded were in the Italian transport and communications industry, where employment fell by 0.7% in the third quarter of 2000 compared to the previous quarter and by 3.0% in the year to the third quarter of 2000.

|                                       |        | Growth rate, quarter compared to previous quarter, seasonally adjusted |       |       |       |       |       | Growth rate, year on year, gross data |       |       |       |       |       |
|---------------------------------------|--------|--|-------|-------|-------|-------|-------|---------------------------------------|-------|-------|-------|-------|-------|
|                                       |        | Q2-99  | Q3-99 | Q4-99 | Q1-00 | Q2-00 | Q3-00 | Q2-99                                 | Q3-99 | Q4-99 | Q1-00 | Q2-00 | Q3-00 |
| Retail trade                          | EU-15  | 0.3  | -0.3  | 1.1   | 1.8   | 1.3   | 0.8   | 2.2                                   | 1.4   | 1.4   | 3.0   | 4.0   | 5.0   |
| Division 52 (1)(2)                    | EUR-11 | 0.3  | -0.3  | 1.1   | 1.8   | 1.3   | 0.8   | 2.2                                   | 1.4   | 1.4   | 3.1   | 4.1   | 5.1   |
|                                       | DK     | -1.2   | 0.8   | 0.6   | 0.6   | -0.4  | -0.2  | 0.5                                   | 1.4   | 1.0   | 0.9   | 1.7   | 0.7   |
|                                       | D      | -2.5   | -0.2  | -0.4  | 0.4   | 0.1   | -0.2  | -1.5                                  | -2.1  | -2.9  | -2.7  | -0.2  | -0.1  |
|                                       | ES     | 1.3  | -2.9  | 5.7   | 1.5   | 1.3   | 1.6   | 3.4                                   | -0.3  | 2.6   | 6.6   | 5.0   | 10.1  |
|                                       | I      | 1.0  | 0.6   | 1.1   | 3.4   | 2.5   | 1.5   | 6.1                                   | 5.7   | 4.9   | 6.3   | 7.9   | 8.9   |
|                                       | L      | 0.7  | 0.3   | 0.2   | 0.1   | :     | :     | 4.2                                   | 3.2   | 2.1   | 1.1   | :     | :     |
|                                       | FIN    | 2.2  | 0.5   | -1.3  | 0.6   | -0.7  | 1.3   | 6.5                                   | 9.0   | 1.7   | 2.0   | -2.0  | 0.9   |
| Distribution (including retail trade) | F      | 0.6  | 0.7   | 0.8   | 0.9   | 0.9   | 0.9   | 2.3                                   | 2.2   | 2.6   | 3.1   | 3.6   | 3.6   |
|                                       | I      | 1.1  | 0.6   | 0.7   | 2.7   | 2.4   | 1.7   | 5.3                                   | 5.0   | 4.1   | 5.0   | 6.5   | 7.7   |
|                                       | NL     | 1.0  | 1.2   | 1.0   | 0.9   | 0.7   | 0.8   | 3.3                                   | 3.8   | 4.0   | 4.2   | 3.8   | 3.4   |
| Section G (2)                         |        |  |       |       |       |       |       |                                       |       |       |       |       |       |
| Hotels & restaurants                  | F      | 0.7  | 0.6   | 1.1   | 1.2   | 1.4   | 1.5   | 4.0                                   | 3.0   | 3.2   | 3.7   | 4.5   | 5.7   |
|                                       | I      | 0.9  | 3.3   | 2.1   | 2.3   | 1.8   | 0.3   | 2.2                                   | 5.8   | 6.0   | 9.3   | 9.8   | 6.3   |
| Section H                             | NL     | 0.4  | 0.5   | 1.7   | 1.6   | 0.1   | 1.4   | 3.9                                   | 3.4   | 3.7   | 4.5   | 4.0   | 4.9   |
| Transport & communication             | F      | 0.5  | 0.7   | 0.9   | 0.8   | 1.0   | 0.7   | 2.1                                   | 2.4   | 2.7   | 2.9   | 3.5   | 3.4   |
|                                       | I      | -0.9   | -0.7  | -0.8  | -0.5  | -1.0  | -0.7  | -2.1                                  | -2.3  | -2.5  | -2.9  | -3.0  | -3.0  |
| Section I                             | NL     | 0.8  | 0.7   | 0.8   | 0.9   | 0.7   | 0.7   | 2.8                                   | 2.5   | 2.8   | 3.5   | 3.3   | 3.0   |
|                                       | FIN    | -0.4   | -0.5  | -0.9  | -0.7  | 4.7   | 0.9   | 2.0                                   | -2.1  | -2.3  | -2.5  | 2.5   | 4.0   |
| Financial intermediation              | F      | -0.1   | 0.1   | 0.2   | -0.2  | 0.7   | 0.4   | -0.1                                  | 0.5   | 0.3   | -0.1  | 0.7   | 1.0   |
|                                       | I      | 0.0  | -0.1  | 0.0   | 0.2   | 0.4   | 0.4   | -0.6                                  | -0.5  | -0.5  | 0.0   | 0.5   | 1.0   |
| Section J                             | NL     | 2.0  | 1.6   | 1.6   | 1.2   | 1.3   | 1.1   | 7.6                                   | 7.2   | 6.9   | 6.3   | 6.1   | 5.2   |
| Business services                     | F      | 2.0  | 2.2   | 1.6   | 2.3   | 1.9   | 1.8   | 7.4                                   | 7.8   | 8.1   | 8.6   | 8.4   | 7.7   |
|                                       | I      | 0.7  | 0.5   | 1.1   | 0.8   | 0.9   | 0.9   | 3.1                                   | 2.0   | 2.8   | 3.1   | 3.4   | 3.7   |
| Section K                             | NL     | 1.5  | 1.6   | 1.3   | 1.9   | 1.3   | 1.3   | 6.5                                   | 6.3   | 5.7   | 6.6   | 6.2   | 5.7   |

*Table 4: Employment index for services, growth rates (%)*

No data available for Member States not included in the table.

- (1) Data from the Netherlands and France have been used in the calculation but cannot be published due to confidentiality;  
 (2) Austrian gross figures are available, but as data starts in the first quarter of 1999 seasonal adjustment is not possible.

## Industrial hours worked

The index of hours worked represents the volume of labour input rather than the average number of hours worked per person. For total industry, this index had grown consistently in the euro-zone since before 1998 until the first quarter of 2000. The reversal of this trend by a fall of 0.5% in the second quarter of 2000 was followed by a further, smaller fall of 0.2% in the third quarter. The same index for the EU-15 shows a similar trend with slightly greater falls of 0.5% and 0.4% in the second and third quarters respectively.

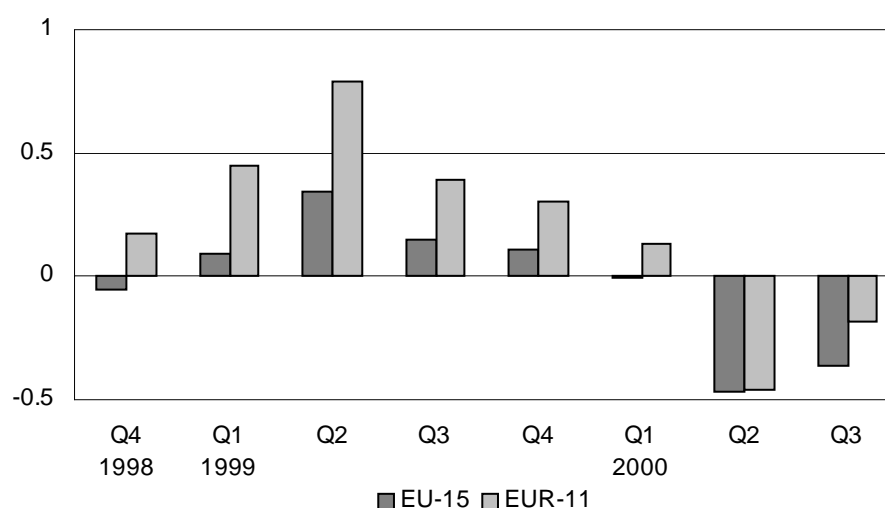


Figure 2: Hours worked index for total industry, growth rates, quarter compared to previous quarter, seasonally adjusted (%)

|                              | Growth rate, quarter compared to previous quarter, seasonally adjusted |       |       |       |       |       | Growth rate, year on year, gross data |       |       |       |       |       |
|------------------------------|--|-------|-------|-------|-------|-------|---------------------------------------|-------|-------|-------|-------|-------|
|                              | Q2-99  | Q3-99 | Q4-99 | Q1-00 | Q2-00 | Q3-00 | Q2-99                                 | Q3-99 | Q4-99 | Q1-00 | Q2-00 | Q3-00 |
| EU-15 Total industry         | 0.3  | 0.2   | 0.1   | 0.0   | -0.5  | -0.4  | 0.4                                   | 0.1   | 0.7   | 1.6   | -0.5  | -1.2  |
| Intermediate goods ind.      | :  | :     | :     | :     | :     | :     | :                                     | :     | :     | :     | :     | :     |
| Capital goods ind.           | :  | :     | :     | :     | :     | :     | :                                     | :     | :     | :     | :     | :     |
| Cons. durable goods ind.     | :  | :     | :     | :     | :     | :     | :                                     | :     | :     | :     | :     | :     |
| Cons. non-durable goods ind. | :  | :     | :     | :     | :     | :     | :                                     | :     | :     | :     | :     | :     |
| EUR-11 Total industry        | 0.8  | 0.4   | 0.3   | 0.1   | -0.5  | -0.2  | 1.6                                   | 1.5   | 2.2   | 2.5   | -0.1  | -0.8  |
| Intermediate goods ind.      | 0.0  | -0.1  | -0.1  | 0.0   | -0.2  | -0.1  | -0.7                                  | -1.4  | -0.7  | 1.6   | -1.6  | -0.9  |
| Capital goods ind.           | 1.2  | 0.2   | 0.4   | 0.8   | -1.0  | -0.1  | -0.9                                  | -0.8  | 0.1   | 3.0   | 0.3   | 0.0   |
| Cons. durable goods ind.     | :  | :     | :     | :     | :     | :     | :                                     | :     | :     | :     | :     | :     |
| Cons. non-durable goods ind. | :  | :     | :     | :     | :     | :     | :                                     | :     | :     | :     | :     | :     |

Table 5: Hours worked index for MIGS, growth rates (%)

|       | Growth rate, quarter compared to previous quarter, seasonally adjusted |       |       |       |       |       | Growth rate, year on year, gross data |       |       |       |       |       |
|-------|--|-------|-------|-------|-------|-------|---------------------------------------|-------|-------|-------|-------|-------|
|       | Q2-99  | Q3-99 | Q4-99 | Q1-00 | Q2-00 | Q3-00 | Q2-99                                 | Q3-99 | Q4-99 | Q1-00 | Q2-00 | Q3-00 |
| EU-15 | 0.3  | 0.2   | 0.1   | 0.0   | -0.5  | -0.4  | 0.4                                   | 0.1   | 0.7   | 1.6   | -0.5  | -1.2  |
| B     | -1.6   | 7.8   | -2.3  | -0.9  | -3.0  | :     | :                                     | :     | :     | :     | :     | :     |
| D     | 0.3  | 0.1   | 0.7   | 0.7   | -1.6  | -0.2  | -1.2                                  | -1.8  | -0.8  | 1.8   | -0.2  | -0.5  |
| I     | 2.3  | 0.6   | 0.0   | 0.9   | -2.8  | 0.2   | -0.8                                  | 0.7   | 0.9   | 4.2   | -1.6  | -1.8  |
| L     | -0.2   | 0.2   | -0.7  | 0.8   | -0.8  | -0.7  | 1.5                                   | 0.8   | 0.3   | 0.1   | -0.5  | -1.4  |
| NL    | 0.1  | 0.1   | 0.1   | 0.0   | 0.1   | 0.1   | 0.4                                   | 0.5   | 0.6   | 0.3   | 0.2   | 0.4   |
| A     | 2.1  | -0.4  | -1.2  | 0.6   | 0.6   | -1.0  | -1.2                                  | -2.2  | -2.3  | 1.0   | -0.5  | -1.1  |
| P     | -0.1   | -1.1  | -1.6  | 1.5   | -2.2  | -1.4  | -2.5                                  | -4.1  | -4.0  | -1.3  | -3.5  | -3.7  |
| FIN   | 5.6  | -0.3  | 0.8   | -2.4  | 0.4   | 1.0   | 6.7                                   | 0.9   | 3.8   | 3.2   | -1.7  | -0.3  |
| UK    | -0.9   | -0.5  | -1.2  | 0.5   | -1.0  | -1.2  | -4.1                                  | -5.4  | -4.9  | -2.1  | -2.2  | -3.0  |

Table 6: Hours worked index for total industry, growth rates (%)

No data available for Member States not included in the table.

For Belgium the calculation basis has been changed, so that growth rates on an annual basis are currently useless.

## Industrial wages and salaries

The rates of change in the industrial wages and salaries index for the EU-15 and the euro-zone have been -0.4% and -0.2% respectively in the third quarter of 2000 compared to the second quarter. These changes represent a reversal of the positive growth rates recorded in both the EU-15 and the euro-zone since the second quarter of 1999.

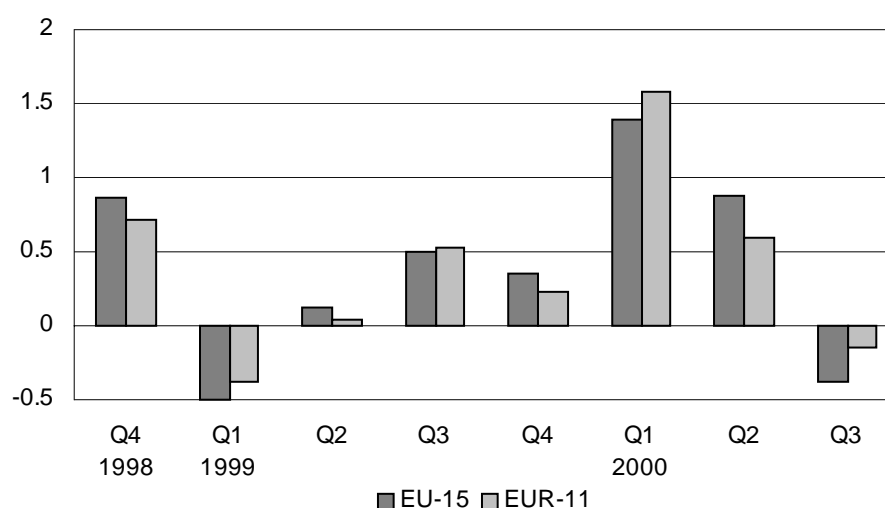


Figure 3: Wages and salaries index for total industry, growth rates quarter compared to previous quarter, seasonally adjusted (%)

|        |                              | Growth rate, quarter compared to previous quarter, seasonally adjusted |                |       |       |       |       | Growth rate, year on year, gross data |       |       |       |       |       |
|--------|------------------------------|--|----------------|-------|-------|-------|-------|---------------------------------------|-------|-------|-------|-------|-------|
|        |                              | Q2-99  | Q3-99          | Q4-99 | Q1-00 | Q2-00 | Q3-00 | Q2-99                                 | Q3-99 | Q4-99 | Q1-00 | Q2-00 | Q3-00 |
|        |                              | EU-15  | Total industry | 0.1   | 0.5   | 0.4   | 1.4   | 0.9                                   | -0.4  | 1.5   | 0.9   | 0.3   | 2.6   |
|        | Intermediate goods ind.      | :  | :              | :     | :     | :     | :     | :                                     | :     | :     | :     | :     | :     |
|        | Capital goods ind.           | 1.2  | -0.1           | 0.6   | 1.0   | 1.6   | -0.2  | 3.0                                   | 2.0   | 1.2   | 2.8   | 3.1   | 3.2   |
|        | Cons. durable goods ind.     | :  | :              | :     | :     | :     | :     | :                                     | :     | :     | :     | :     | :     |
|        | Cons. non-durable goods ind. | :  | :              | :     | :     | :     | :     | :                                     | :     | :     | :     | :     | :     |
| EUR-11 | Total industry               | 0.0  | 0.5            | 0.2   | 1.6   | 0.6   | -0.2  | 1.3                                   | 0.8   | 0.3   | 2.5   | 3.1   | 2.2   |
|        | Intermediate goods ind.      | 0.3  | 0.4            | 0.3   | 1.5   | 0.8   | 0.2   | 1.4                                   | 0.3   | -0.1  | 2.9   | 3.6   | 2.6   |
|        | Capital goods ind.           | 1.1  | 0.0            | 0.4   | 1.4   | 1.2   | 0.0   | 3.0                                   | 2.1   | 1.3   | 2.9   | 3.1   | 3.1   |
|        | Cons. durable goods ind.     | :  | :              | :     | :     | :     | :     | :                                     | :     | :     | :     | :     | :     |
|        | Cons. non-durable goods ind. | :  | :              | :     | :     | :     | :     | :                                     | :     | :     | :     | :     | :     |

Table 7: Wages and salaries index for MIGS, growth rates (%)

|       | Growth rate, quarter compared to previous quarter, seasonally adjusted |       |       |       |       |       | Growth rate, year on year, gross data |       |       |       |       |       |
|-------|--|-------|-------|-------|-------|-------|---------------------------------------|-------|-------|-------|-------|-------|
|       | Q2-99  | Q3-99 | Q4-99 | Q1-00 | Q2-00 | Q3-00 | Q2-99                                 | Q3-99 | Q4-99 | Q1-00 | Q2-00 | Q3-00 |
| EU-15 | 0.1  | 0.5   | 0.4   | 1.4   | 0.9   | -0.4  | 1.5                                   | 0.9   | 0.3   | 2.6   | 3.2   | 2.3   |
| B     | 1.1  | 1.0   | 0.6   | 1.7   | 0.7   | :     | 3.2                                   | 3.5   | 2.5   | 4.8   | 4.2   | :     |
| DK    | -0.3   | 0.7   | -0.3  | 2.1   | 1.3   | 0.0   | 5.4                                   | 1.0   | -0.9  | 2.9   | 5.0   | 2.6   |
| D     | 0.4  | 0.0   | 0.1   | 1.6   | 0.7   | 0.3   | 1.6                                   | 0.7   | -0.2  | 2.2   | 2.6   | 2.7   |
| I     | 2.0  | 0.9   | 0.9   | 1.3   | 0.1   | -2.4  | 1.4                                   | 1.4   | 1.3   | 5.6   | 3.2   | -0.1  |
| L     | 1.9  | 0.1   | 1.2   | 1.4   | 1.5   | 1.9   | 3.5                                   | 2.8   | 2.6   | 4.4   | 4.2   | 6.4   |
| NL    | 0.9  | 0.9   | 0.7   | 0.6   | 0.9   | 1.0   | 2.9                                   | 2.9   | 2.9   | 3.1   | 3.1   | 3.3   |
| A     | 0.2  | -0.2  | 0.5   | 1.0   | 0.4   | 0.9   | 1.6                                   | 1.2   | 0.8   | 1.4   | 1.6   | 2.8   |
| P     | 0.3  | 0.9   | 0.2   | 1.4   | 1.2   | 1.3   | 1.6                                   | 2.0   | 1.5   | 2.7   | 3.7   | 4.3   |
| FIN   | 1.1  | 3.7   | 1.5   | 0.2   | 3.6   | 1.4   | 2.0                                   | 3.4   | 5.1   | 6.7   | 9.8   | 6.5   |

Table 8: Wages and salaries index for total industry, growth rates (%)

No data available for Member States not included in the table.

## EU-15 indices for industrial Divisions

| NACE Rev. 1 heading (code)    | Employment |       |       |       |       |       | Hours worked |       |       |       |       |       | Wages and salaries |       |       |       |       |       |
|-------------------------------|------------|-------|-------|-------|-------|-------|--------------|-------|-------|-------|-------|-------|--------------------|-------|-------|-------|-------|-------|
|                               | Q2-99      | Q3-99 | Q4-99 | Q1-00 | Q2-00 | Q3-00 | Q2-99        | Q3-99 | Q4-99 | Q1-00 | Q2-00 | Q3-00 | Q2-99              | Q3-99 | Q4-99 | Q1-00 | Q2-00 | Q3-00 |
| Mining of coal and lignite 10 | 66.5       | 65.0  | 63.5  | 62.1  | 60.7  | 59.1  | 70.3         | 68.0  | 66.7  | 64.7  | 62.0  | 58.6  | 86.9               | 85.8  | 86.3  | 87.2  | 88.2  | 86.4  |
| Gas and oil extraction 11     | 101.7      | 99.3  | 95.5  | 95.3  | 96.5  | 96.6  | :            | :     | :     | :     | :     | :     | :                  | :     | :     | :     | :     | :     |
| Uranium & thorium mining 12   | 45.7       | 25.2  | :     | :     | :     | :     | :            | :     | :     | :     | :     | :     | :                  | :     | :     | :     | :     | :     |
| Other non-metallic mining 14  | 92.8       | 93.8  | 91.8  | 91.8  | 92.2  | 90.1  | :            | :     | :     | :     | :     | :     | :                  | :     | :     | :     | :     | :     |
| Food and beverages 15         | 99.7       | 100.0 | 99.9  | 100.0 | 100.5 | 101.3 | :            | :     | :     | :     | :     | :     | :                  | :     | :     | :     | :     | :     |
| Tobacco 16                    | 97.2       | 96.5  | 94.9  | 96.9  | 97.2  | 97.3  | :            | :     | :     | :     | :     | :     | :                  | :     | :     | :     | :     | :     |
| Textiles 17                   | 89.9       | 89.5  | 88.6  | 88.3  | 88.0  | 87.1  | :            | :     | :     | :     | :     | :     | 98.5               | 99.1  | 98.4  | 99.4  | 99.3  | 99.5  |
| Clothing 18                   | 82.7       | 81.2  | 79.9  | 78.8  | 77.8  | 76.2  | :            | :     | :     | :     | :     | :     | :                  | :     | :     | :     | :     | :     |
| Leather products 19           | 86.6       | 83.6  | 82.5  | 82.7  | 79.6  | :     | :            | :     | :     | :     | :     | :     | :                  | :     | :     | :     | :     | :     |
| Wood products 20              | 98.8       | 99.8  | 100.1 | 101.3 | 102.5 | 103.1 | :            | :     | :     | :     | :     | :     | :                  | :     | :     | :     | :     | :     |
| Pulp & paper 21               | 96.3       | 95.2  | 94.3  | 94.7  | 94.5  | 94.5  | :            | :     | :     | :     | :     | :     | :                  | :     | :     | :     | :     | :     |
| Publishing & printing 22      | 101.6      | 101.6 | 101.7 | 101.7 | 101.5 | 101.5 | :            | :     | :     | :     | :     | :     | :                  | :     | :     | :     | :     | :     |
| Fuel products 23              | 88.3       | 85.6  | 86.5  | 80.9  | 81.2  | 79.5  | :            | :     | :     | :     | :     | :     | :                  | :     | :     | :     | :     | :     |
| Chemicals 24                  | 97.2       | 97.2  | 97.2  | 96.9  | 96.7  | 97.0  | :            | :     | :     | :     | :     | :     | 105.7              | 106.9 | 106.6 | 109.0 | 109.4 | 109.1 |
| Rubber & plastic 25           | 101.1      | 101.0 | 101.6 | 102.7 | 103.7 | 103.5 | :            | :     | :     | :     | :     | :     | 110.4              | 110.9 | 111.9 | 112.9 | 114.3 | 113.9 |
| Non-metallic minerals 26      | 94.4       | 94.4  | 94.9  | 95.4  | 95.9  | 95.8  | :            | :     | :     | :     | :     | :     | 103.8              | 104.5 | 104.6 | 105.7 | 106.4 | 107.1 |
| Basic metals 27               | 94.6       | 93.7  | 92.8  | 91.7  | 91.4  | 91.2  | :            | :     | :     | :     | :     | :     | 104.8              | 104.5 | 105.4 | 106.2 | 108.2 | 108.8 |
| Metal products 28             | 100.8      | 101.2 | 101.5 | 101.7 | 101.7 | 101.8 | :            | :     | :     | :     | :     | :     | 108.4              | 110.1 | 109.7 | 110.0 | 111.2 | 111.5 |
| Machinery 29                  | 98.0       | 97.9  | 97.8  | 97.9  | 98.0  | 97.8  | 98.2         | 98.5  | 98.8  | 99.2  | 99.0  | 98.8  | 107.6              | 108.1 | 108.0 | 109.0 | 109.8 | 110.3 |
| Office machinery 30           | 99.6       | 98.6  | 98.7  | 97.5  | 96.6  | 97.9  | :            | :     | :     | :     | :     | :     | :                  | :     | :     | :     | :     | :     |
| Electrical machinery 31       | 97.5       | 96.6  | 96.0  | 96.3  | 96.5  | 97.0  | 98.2         | 98.1  | 98.7  | 99.1  | 98.7  | 98.5  | 103.8              | 103.2 | 104.2 | 105.3 | 105.7 | 105.7 |
| Radio/TV/communication 32     | 99.4       | 100.9 | 102.2 | 103.6 | 104.1 | 105.1 | :            | :     | :     | :     | :     | :     | 111.8              | 113.2 | 115.0 | 117.4 | 119.2 | 121.5 |
| Medical and optical 33        | 101.9      | 101.1 | 100.6 | 100.6 | 100.7 | 101.7 | :            | :     | :     | :     | :     | :     | :                  | :     | :     | :     | :     | :     |
| Motor vehicles 34             | 104.8      | 105.2 | 105.7 | 106.4 | 106.5 | 106.9 | :            | :     | :     | :     | :     | :     | 116.9              | 116.5 | 117.5 | 118.7 | 120.4 | 121.1 |
| Other transport 35            | 97.7       | 97.6  | 97.0  | 96.6  | 96.6  | 95.5  | :            | :     | :     | :     | :     | :     | :                  | :     | :     | :     | :     | :     |
| Furniture & other manf. 36    | 97.4       | 97.9  | 98.3  | 98.8  | 98.8  | 98.6  | :            | :     | :     | :     | :     | :     | :                  | :     | :     | :     | :     | :     |
| Recycling 37                  | 111.0      | 112.0 | 113.5 | 116.0 | 118.3 | 119.5 | :            | :     | :     | :     | :     | :     | :                  | :     | :     | :     | :     | :     |
| Energy/hot water supply 40    | 89.7       | 89.2  | 88.4  | 87.5  | 87.1  | 87.1  | :            | :     | :     | :     | :     | :     | :                  | :     | :     | :     | :     | :     |
| Water 41                      | 94.0       | 93.8  | 93.8  | 94.4  | 94.1  | 94.3  | :            | :     | :     | :     | :     | :     | :                  | :     | :     | :     | :     | :     |
| Construction 45               | 101.7      | 102.2 | 102.0 | 103.2 | 103.3 | 102.5 | :            | :     | :     | :     | :     | :     | 99.5               | 100.7 | 101.4 | 102.5 | 103.2 | :     |

Table 9: Indices for the EU, seasonally adjusted, 1995 = 100

## ➤ ESSENTIAL INFORMATION – METHODOLOGICAL NOTES

The Labour Input Indices shown in this publication represent in general the evolution of the labour market in the economy. Business statistics aim at providing information for the analysis of the economic cycle.

The Short Term Business Statistics unit of Eurostat (D3/EBT) handles in particular the following three indicators:

The **number of persons employed index** monitors the development of employment in industry and services in terms of the total numbers. This indicator can be approximated by the number of employees.

The **hours worked index** shows the development in the total volume of work done.

Lastly, it is the objective of the **wages and salaries index** to show the evolution of the total amounts of wages and salaries paid.

The legal basis for the labour indicators is the Council Regulation No 1165/98 of 19th of May 1998 concerning short-term statistics, which is currently in the process of implementation.

### **Employment index:**

The number of persons employed is defined as the total number of persons working in an observation unit (inclusive of working proprietors, partners working regularly in the unit and unpaid family workers), as well as persons who work outside the unit who belong to it and are paid by it (e.g. sales representatives, delivery personnel, repair and maintenance teams). It includes persons absent for a short period (e.g. sick leave, paid leave or special leave), and also those on strike, but not those absent for an indefinite period. It also includes part-time workers who are regarded as such under the laws of the country concerned and who are on the payroll, as well as seasonal workers, apprentices and home workers on the payroll. The number of persons employed excludes

manpower supplied to the unit by other enterprises, persons carrying out repair and maintenance work in the observation unit on behalf of other enterprises, as well as those on compulsory military service.

### **Hours worked index:**

The total number of hours worked by employees represents the aggregate number of hours actually worked producing output of the observation unit during the reference period. This variable excludes hours paid but not actually worked such as for annual leave, holidays and sickness leave. It also excludes meal breaks and commuting between home and work. Included are hours actually worked during normal working hours; hours worked in addition to those; time which is spent at the place of work on tasks such as preparing the site and time corresponding to short periods of rest at the work place. If the exact number of hours actually worked is not known, it may be estimated on the basis of the theoretical number of working hours and the average rate of absences (sickness, maternity, etc.).

### **Wages and salaries index:**

Wages and salaries include all gratuities, bonuses, ex gratia payments, 13th month payments, severance payments, lodging, transport, cost-of-living, and family allowances, tips, commission, attendance fees, etc. received by employees, as well as taxes, social security contributions and other amounts payable by employees and withheld at source by the employer. Payments for agency workers are not included in wages and salaries.

### **Related Indices:**

This publication on labour input variables supplements the Eurostat publications on labour costs. In addition, the national accounts contain information on the labour input variables.

The **labour cost index** aims at providing information on the evolution of labour costs and thus has a different focus compared to the labour input variables of business statistics. For many Member States the actual source for the labour cost index is, at least partly, business statistics. Some Member States base themselves on the data from National Accounts, administrative employer files or separate earnings survey. A mixture of different sources might also be used.

The **national accounts** inform on labour input variables but in physical as well as in value forms. These variables complement other national accounts aggregates and therefore need to be fully consistent with them. Business statistics are used by many Member States for short-term analysis in the context of quarterly national accounts, in addition to information from labour force surveys. When revising these estimates later, more administrative data is taken into account.

Please note that the different sources may show some variations due to different practices of revisions, seasonal adjustment, characteristics of data sources, and aggregation methods.

### **For more information, please contact the Short-term Statistics section, Unit D3, Eurostat:**

Gunter Schäfer (Tel: +352-4301-33566, Fax +352-4301-34359, [gunter.schaefer@cec.eu.int](mailto:gunter.schaefer@cec.eu.int))

Monique Sauber (Tel: +352-4301-33214, Fax +352-4301-34359, [monique.sauber@cec.eu.int](mailto:monique.sauber@cec.eu.int))

# Further information:

## ➤ Reference publications

Title Monthly Panorama of European Business  
Catalogue No KS-AM-01-010-EN-C Price EUR 162

## ➤ Databases

NewCronos, Theme 4  
Domain EBT (European Business Trends)

To obtain information or to order publications, databases and special sets of data, please contact the **Data Shop** network:

| BELGIQUE/BELGIË   | DANMARK  | DEUTSCHLAND   | ESPAÑA   | FRANCE  | ITALIA – Roma   |
|---|--|---|--|---|---|
| <b>Eurostat Data Shop</b><br>Bruxelles/Brussel<br>Rue du Commerce 124<br>Handelsstraat 124<br>B-1049 BRUXELLES / BRUSSEL<br>Tel. (32-2) 299 66 66<br>Fax (32-2) 295 01 25<br>E-mail: datashop.brussels@cec.eu.int   | <b>DANMARKS STATISTIK</b><br>Bibliotek og Information<br><b>Eurostat Data Shop</b><br>Sejrogade 11<br>DK-2100 KØBENHAVN Ø<br>Tlf. (45) 39 17 30 30<br>Fax (45) 39 17 30 03<br>E-mail: bib@dst.dk   | <b>STATISTISCHES BUNDESAMT</b><br><b>Eurostat Data Shop Berlin</b><br>Otto-Braun-Straße 70-72<br>(Eingang: Karl-Marx-Allee)<br>D-10178 BERLIN<br>Tel. (49) 1888-644 94 27/28<br>Fax (49) 1888-644 94 30<br>E-mail: datashop@statistik-bund.de   | <b>INE Eurostat Data Shop</b><br>Paseo de la Castellana, 183<br>Oficina 009<br>Entrada por Esteban ez Calderón<br>E-28046 MADRID<br>Tel. (34-91) 583 91 67<br>Fax (34-91) 579 71 20<br>E-mail: datashop.eurostat@ine.es  | <b>INSEE Info Service</b><br><b>Eurostat Data Shop</b><br>195, rue de Bercy<br>Tour Gamma A<br>F-75582 PARIS CEDEX 12<br>Tel. (33-1) 53 17 88 44<br>Fax (33-1) 53 17 88 22<br>E-mail: datashop@insee.fr   | <b>ISTAT</b><br><b>Centro di Informazione Statistica</b><br><b>Sede di Roma, Eurostat Data Shop</b><br>Via Cesare Balbo, 11a<br>I-00184 ROMA<br>Tel. (39) 06 46 73 31 02/06<br>Fax (39) 06 46 73 31 01/07<br>E-Mail: dipdiff@istat.it |
| ITALIA – Milano   | LUXEMBOURG   | NEDERLAND   | NORGE  | PORTUGAL  | SCHWEIZ/SUISSE/SVIZZERA   |
| <b>ISTAT</b><br><b>Ufficio Regionale per la Lombardia</b><br><b>Eurostat Data Shop</b><br>Via Fieno 3<br>I-20123 MILANO<br>Tel. (39) 02 80 61 32 460<br>Fax (39) 02 80 61 32 304<br>E-mail: mileuro@tin.it  | <b>Eurostat Data Shop Luxembourg</b><br>BP 453<br>L-2014 LUXEMBOURG<br>4, rue A. Weicker<br>L-2721 LUXEMBOURG<br>Tel. (352) 43 35 2251<br>Fax (352) 43 35 2221<br>E-mail: dslux@eurostat.datashop.lu   | <b>STATISTICS NETHERLANDS</b><br><b>Eurostat Data Shop-Voorburg</b><br>Postbus 4000<br>2270 JM VOORBURG<br>Nederland<br>Tel. (31-70) 337 49 00<br>Fax (31-70) 337 59 84<br>E-mail: datashop@csb.nl  | <b>Statistics Norway</b><br><b>Library and Information Centre</b><br><b>Eurostat Data Shop</b><br>Kongst gate 6<br>Boks 8131, Dep.<br>N-0033 OSLO<br>Tel. (47) 22 86 46 43<br>Fax (47) 22 86 45 04<br>E-mail: datashop@ssb.no  | <b>Eurostat Data Shop Lisboa</b><br><b>INE/Serviço de Difusão</b><br>Av. António José de Almeida, 2<br>P-1000-043 LISBOA<br>Tel. (351) 21 842 61 00<br>Fax (351) 21 842 63 64<br>E-mail: data.shop@ine.pt | <b>Statistisches Amt des Kantons</b><br><b>Zürich, Eurostat Data Shop</b><br>Bleicherweg 5<br>CH-8090 Zürich<br>Tel. (41-1) 225 12 12<br>Fax (41-1) 225 12 99<br>E-Mail: datashop@zh.ch<br>Internet: http://www.zh.ch/statistik       |
| SUOMI/FINLAND   | SVERIGE  | UNITED KINGDOM  | UNITED KINGDOM   | UNITED STATES OF AMERICA  |   |
| <b>STATISTICS FINLAND</b><br><b>Eurostat Data Shop Helsinki</b><br><b>Tilastokirjasto</b><br>PL 2B<br>FIN-00022 Tilastokeskus<br>Työpajakatu 13 B, 2 Kerros, Helsinki<br>P. (358-9) 17 34 22 21<br>F. (358-9) 17 34 22 79<br>Sähköposti:<br>datashop.tilastokeskus@tilastokeskus.fi<br>Internet: http://www.tilastokeskus.fi/kk/datashop.html | <b>STATISTICS SWEDEN</b><br><b>Information service</b><br><b>Eurostat Data Shop</b><br>Karlavägen 100 - Box 24 300<br>S-104 51 STOCKHOLM<br>Tfn. (46-8) 50 69 48 01<br>Fax (46-8) 50 69 48 99<br>E-Post: info@scb.se<br>Internet: http://www.scb.se/info/<br>datashop/le/udatashop.asp | <b>Eurostat Data Shop</b><br><b>Enquiries &amp; advice and publications</b><br><b>Office for National Statistics</b><br>Customers & Electronic Services Unit<br>1 Drummond Gate - B1/05<br>LONDON SW1V 2QQ<br>Tel. (44-20) 75 33 56 76<br>Fax (44-1 633) 81 27 62<br>E-mail: eurostat.datashop@ons.gov.uk | <b>Eurostat Data Shop</b><br><b>Electronic Data Extractions,</b><br><b>Enquiries &amp; advice - R.CADE</b><br>Unit 1L Mounjoij Research Centre<br>University of Durham<br>DURHAM DH1 3SW<br>Tel. (44-191) 374 73 50<br>Fax: (44-191) 384 49 71<br>E-mail: r-cade@dur.ac.uk<br>Internet: http://www.rcade.dur.ac.uk | <b>HAVER ANALYTICS</b><br><b>Eurostat Data Shop</b><br>60 East 42nd Street<br>Suite 3310<br>NEW YORK, NY 10165<br>Tel. (1-212) 986 93 00<br>Fax (1-212) 986 69 81<br>E-mail: eurodata@haver.com           |   |

### Media Support Eurostat (for professional journalists only):

Bech Building Office A3/48 - L-2920 Luxembourg - Tel. (352) 4301 33408 - Fax (352) 4301 32649 - e-mail: eurostat-mediasupport@cec.eu.int

## For information on methodology

Gunter Schäfer, Eurostat/D3, L-2920 Luxembourg, Tel. (352) 4301 33566, Fax (352) 4301 34359, E-mail: gunter.schaefer@cec.eu.int

ORIGINAL: English

Please visit our web site at [www.europa.eu.int/comm/eurostat/](http://www.europa.eu.int/comm/eurostat/) for further information!

A list of worldwide sales outlets is available at the **Office for Official Publications of the European Communities**.

2 rue Mercier - L-2985 Luxembourg  
Tel. (352) 2929 42118 Fax (352) 2929 42709  
Internet Address <http://eur-op.eu.int/tf/general/s-ad.htm>  
e-mail: info.info@cec.eu.int

BELGIQUE/BELGIË - DANMARK - DEUTSCHLAND - GREECE/ELLADA - ESPAÑA - FRANCE - IRELAND - ITALIA - LUXEMBOURG - NEDERLAND - ÖSTERREICH  
PORTUGAL - SUOMI/FINLAND - SVERIGE - UNITED KINGDOM - ISLAND - NORGE - SCHWEIZ/SUISSE/SVIZZERA - BALGARIJA - ČESKÁ REPUBLIKA - CYPRUS  
EESTI - HRVATSKA - MAGYARORSZÁG - MALTA - POLSKA - ROMÂNIA - RUSSIA - SLOVAKIA - SLOVENIA - TÜRKIYE - AUSTRALIA - CANADA - EGYPT - INDIA  
ISRAËL - JAPAN - MALAYSIA - PHILIPPINES - SOUTH KOREA - THAILAND - UNITED STATES OF AMERICA

# Order form

I would like to subscribe to Statistics in focus (from 1.1.2001 to 31.12.2001):

(for the Data Shop and sales office addresses see above)

**Formula 1:** All 9 themes (approximately 140 issues)

Paper: EUR 360

Language required:  DE  EN  FR

**Formula 2:** One or more of the following seven themes:

Theme 1 'General statistics'

Paper: EUR 42

Theme 2 'Economy and finance'

Theme 3 'Population and social conditions'

Theme 4 'Industry, trade and services'

Theme 5 'Agriculture and fisheries'

Theme 6 'External trade'

Theme 8 'Environment and energy'

Paper: EUR 84

Language required:  DE  EN  FR

Statistics in focus can be downloaded (pdf file) free of charge from the Eurostat web site. You only need to register. For other solutions, contact your Data Shop.

Please send me a free copy of 'Eurostat mini-guide' (catalogue containing a selection of Eurostat products and services)

Language required:  DE  EN  FR

I would like a free subscription to 'Statistical References', the information letter on Eurostat products and services

Language required:  DE  EN  FR

Mr  Mrs  Ms

(Please use block capitals)

Surname: \_\_\_\_\_ Forename: \_\_\_\_\_

Company: \_\_\_\_\_ Department: \_\_\_\_\_

Function: \_\_\_\_\_

Address: \_\_\_\_\_

Post code: \_\_\_\_\_ Town: \_\_\_\_\_

Country: \_\_\_\_\_

Tel.: \_\_\_\_\_ Fax: \_\_\_\_\_

E-mail: \_\_\_\_\_

### Payment on receipt of invoice, preferably by:

Bank transfer

Visa  Eurocard

Card No: \_\_\_\_\_ Expires on: \_\_\_\_/\_\_\_\_/\_\_\_\_

### Please confirm your intra-Community VAT number:

If no number is entered, VAT will be automatically applied. Subsequent reimbursement will not be possible.