

AGRICULTURAL PRICE TRENDS IN THE EU IN THE FOURTH QUARTER OF 1999

G. Mahon

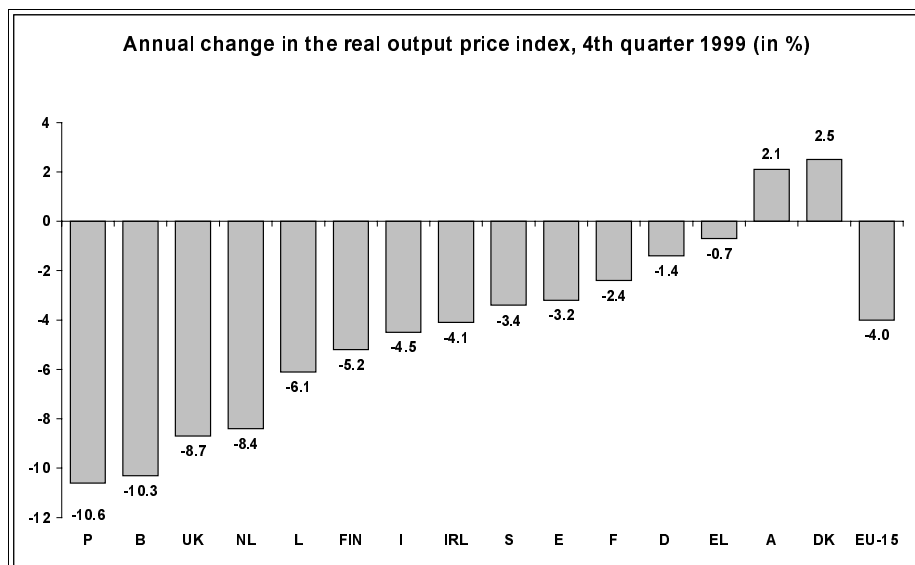
Statistics in focus

AGRICULTURE AND FISHERIES

THEME 5 – 10/2000

Contents

Output prices	2
Input prices	2
Term of trade	3



The index of prices for agricultural products in the European Union (EU-15) fell both in nominal terms (-2.2%) and in real terms (-4%) in the last quarter of 1999 relative to the corresponding quarter of the previous year. A similar decline in the real output price index was seen for EUR11 (-3.8%). This decline continues the trend seen throughout 1998 and 1999. The decrease in the overall price index was due to the fall in crop prices (-7.5%), as prices for animals and animal products remained more or less stable. Root crop prices fell sharply (-23.3%). However, cereal prices were close to the level seen in the fourth quarter of 1998, while prices for olives and olive oil increased significantly (+9.3%). The recovery in pig prices began to speed up, even though the price index remains at a low level. Real prices for milk continued to deteriorate.

All Member States, except Austria and Denmark (see graph) experienced a decline in the real total output price index, with falls ranging from -0.7% in Greece to -10.3% in Belgium and -10.6% in Portugal.

The index of prices of the means of agricultural production, i.e. the input price index, showed little change for EU-15 in real terms (-0.1%). Prices for energy and lubricants increased significantly (+15%) while prices for fertilisers (-6.7%) and animal feedingstuffs (-3.2%) decreased. Changes in the total output price index ranged from +0.6% in Belgium and the Netherlands to -2.2% in Ireland. The agricultural terms of trade (output prices vs. input prices) declined (-3.9%).



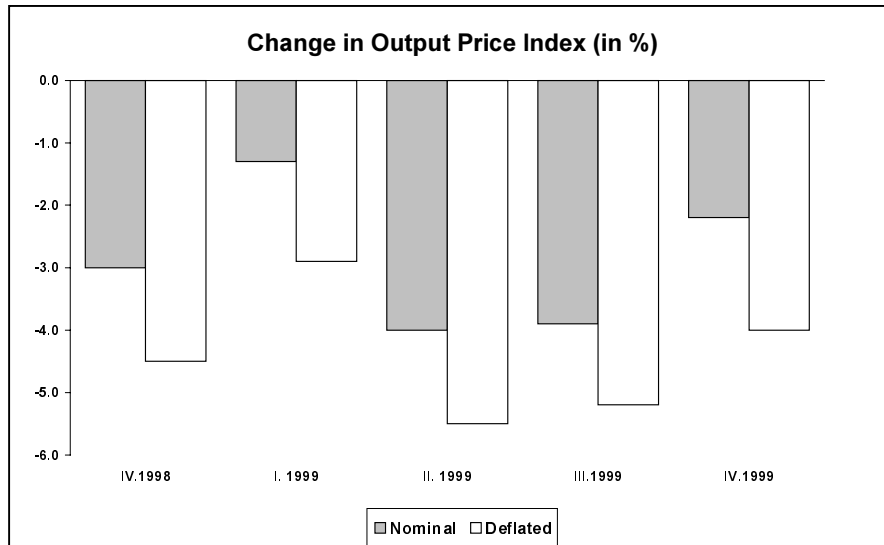
Output prices

With regard to producer prices of agricultural products (see Table 1), the decline in the real total output price index and the fall in crop product prices have already been noted.

Real prices for crop products declined overall (-7.5%), and price decreases were seen for wine must or wine (-5.2%), fruit (-7.1%), fresh vegetables (-8.8%), flowers and ornamental plants (-9.3%), "other crop products", i.e. pulses, oilseeds, etc. (-9.4%), seeds (-14.7%) and especially root crops (-23%). In contrast, there was little change in the price index for cereals and rice (+1.1%), and prices for olives and olive oil rose considerably (+9.3%).

Changes in the price index for crop products across Member States (see Table 2) ranged from -1.7% in Greece to -16.8% in Portugal.

For animals and animal products, the real price index remained stable overall (-0.2%), having improved throughout 1999. Prices fell for calves (-2.6%), "other animals", i.e. horses, rabbits, etc. (-2.7%) and



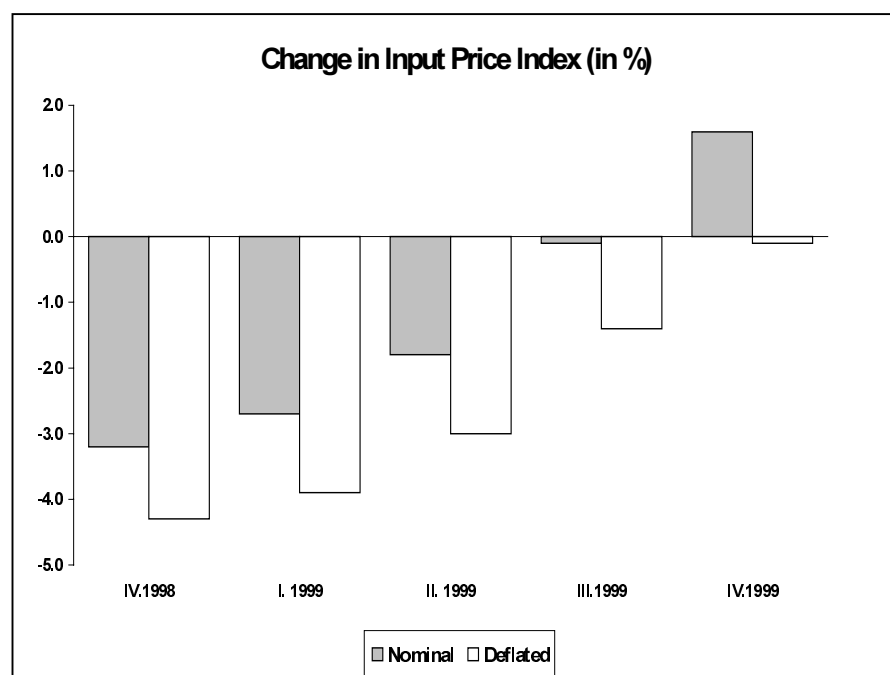
poultry (-6.9%). In contrast, the price index for sheep and lambs improved (+2.9%) and the price index for pigs, which had fallen steeply during 1998 and early 1999, rose considerably in the last quarter of 1999 (+20.8%).

With regard to animal products, there was a marked price decrease for milk (-5.1%), continuing the trend seen in the previous two quarters. The price index for eggs also declined steeply (-4.9%), but prices for "other animal products", i.e.

honey, wool, hides, etc. rose appreciably (+9.8%).

The fall in the real price index for animals and animal products seen in the first three quarters of 1999 did not continue in several Member States (Netherlands, Spain, Germany, Greece, Austria and Denmark). The fall in real prices for animals and animal products eased off in all EU countries except Luxembourg (-6.9%).

Input prices



The trend in the EU-15 index of purchase prices for the means of agricultural production (see Table 3) was reversed in nominal terms (+1.6%). This slight increase contrasts with the fall in agricultural input prices seen in previous quarters.

The real price index of goods and services for current consumption in agriculture remained stable. There were marked increases in energy prices (+15%) and productive livestock prices (+7.4%). In contrast, prices for two of the most important of these current inputs - fertilisers (-6.7%) and animal feedingstuffs (-3.2%) - fell appreciably. The real price index for goods and services contributing to agricultural investment declined slightly (-0.4%)

as a result of lower prices of both machinery (-0.6%) and buildings (-0.1%).

Total input prices increased in nominal terms in all Member States except in Portugal and United

Kingdom (see Table 4). Real input prices remained stable or fell in most Member States.

Term of trade

The agricultural terms of trade, calculated by dividing the real output price index by the real input price index, declined significantly (-3.9%) for EU-15 in the fourth quarter of 1999, by roughly the same percentage as in the previous quarter. A slight fall in input prices was combined with a steeper decline in output prices. The downward trend seen in previous quarters thus continued.

The terms of trade declined in all Member States except Austria (+1.8%) and Denmark (+5%). Decreases ranged from -2.3% in France to -7.2% in the United Kingdom and the Netherlands and -8.8% in Portugal. The trend in the terms of trade essentially reflects the trend in the output price index.

	(%)				
	IV.1998	I. 1999	II. 1999	III.1999	IV. 1999
B	2.6	9.9	-4.0	-9.0	-11.5
DK	-13.8	-9.7	-6.6	-0.8	5.0
D	-3.5	-4.6	-2.9	-1.4	-3.6
EL	5.9	3.1	-0.5	-2.9	-2.7
E	-1.4	5.1	1.6	-3.1	-3.1
F	1.7	1.0	-1.7	-2.9	-2.3
IRL	-3.7	-4.6	-6.6	-6.4	-3.5
I	-1.2	3.0	-5.0	-5.3	-3.2
L	3.0	-3.7	-3.1	-4.4	-5.5
NL	-2.6	-3.5	-7.3	-7.6	-7.2
A	-8.8	-5.6	-2.9	-0.5	1.8
P	8.2	0.3	3.8	-4.6	-8.8
FIN	2.7	3.9	2.9	-3.6	-4.7
S	3.0	4.9	1.8	-1.3	-4.1
UK	5.0	5.0	-2.4	-4.7	-7.2
EU-15	-0.2	1.1	-2.5	-3.9	-3.9

➤ ESSENTIAL INFORMATION – METHODOLOGICAL NOTES

Type of index: The indices, from which the rates of change reported here were calculated, are Laspeyres type indices with base year 1990. That is, for the purposes of aggregation (over products or services within a Member State, and across Member States) the sub-indices were weighted by the values of sales or purchases in 1990. That year is also the reference year, i.e. 1990=100. For most items (exceptions being fruit and vegetables) the same weights are used for each month of the year.

Deflation: The EU agricultural price indices, output and input, are available in Eurostat's New Cronos database (PRAG domain) in both nominal and deflated form. By using the deflated indices it is possible to avoid the distortions in the nominal price indices caused by different inflation rates in the Member States. The nominal agricultural price indices are deflated by means of the consumer price index for each Member State. The terms "deflated" and "real" are used synonymously in this report.

Germany: The output and input price indices for Germany now refer to that country in its boundaries following October 1990. The national authority has calculated indices for Germany in its new frontiers on the basis 1991=100. Eurostat has re-referenced these indices to 1990=100 on the assumption that the change in the agricultural prices from 1990 to 1991 for Germany in its previous frontiers approximates to the change for the whole country.

Table 1

**EU Index of producer prices of agricultural products:
Rates of change of the price indices for EU-15**

						(%)				
						IV.1998	I. 1999	II. 1999	III.1999	IV 1999
NOMINAL INDICES										
0	TOTAL		-3.0	-1.3	-4.0	-3.9	-2.2			
1	CROP PRODUCTS		2.7	6.1	-1.2	-4.9	-5.5			
11	Cereals and rice		-7.1	-6.9	-3.4	1.8	2.4			
12	Root crops		15.2	33.6	11.5	-3.1	-21.7			
13	Fruit		-1.5	7.9	-6.5	-19.3	-4.9			
14	Fresh vegetables		8.1	12.0	-4.9	-5.1	-6.1			
15	Wine must and wine		8.6	9.1	3.6	-1.1	-3.7			
16	Olives and olive oil		-7.7	7.5	12.4	12.4	11.2			
17	Seeds		6.5	7.1	15.5	-5.7	-13.0			
18	Flowers etc.		5.6	-0.8	-5.3	-6.1	-8.2			
19	Other crop products		-3.8	-8.7	-8.1	-7.6	-6.9			
2	ANIMALS AND ANIMAL PRODUCTS		-8.7	-9.0	-7.1	-2.9	1.5			
21	Animals		-14.8	-13.0	-8.8	-1.4	5.6			
21 A	Calves		3.4	0.8	-4.3	0.7	-0.8			
21 B	Cattle excluding calves		-2.4	-4.1	-3.6	-3.7	0.8			
21 C	Pigs		-36.9	-31.6	-16.6	7.8	22.8			
21 D	Sheep and lambs		-9.9	-6.5	-6.9	-9.3	5.1			
21 E	Poultry		-5.1	-3.8	-8.2	-10.2	-5.0			
21 F	Other animals		-3.3	-6.9	-7.5	-2.6	-0.5			
22	Milk		1.2	-1.8	-3.7	-4.5	-3.4			
23	Eggs		-8.2	-9.9	-10.2	-9.6	-3.4			
24	Other animal products		-14.5	-20.6	-10.6	3.3	10.3			
DEFLATED INDICES										
0	TOTAL		-4.5	-2.9	-5.5	-5.2	-4.0			
1	CROP PRODUCTS		1.1	4.6	-2.6	-6.2	-7.5			
11	Cereals and rice		-8.3	-8.2	-4.6	0.6	1.1			
12	Root crops		14.6	33.1	11.6	-3.5	-23.3			
13	Fruit		-4.0	6.0	-8.2	-21.3	-7.1			
14	Fresh vegetables		5.6	10.8	-7.0	-6.5	-8.8			
15	Wine must and wine		7.2	7.5	2.0	-2.6	-5.2			
16	Olives and olive oil		-10.0	5.5	11.1	11.0	9.3			
17	Seeds		5.4	5.7	14.1	-7.5	-14.7			
18	Flowers etc.		3.9	-2.2	-6.7	-7.5	-9.3			
19	Other crop products		-5.9	-11.6	-10.8	-9.8	-9.4			
2	ANIMALS AND ANIMAL PRODUCTS		-9.9	-10.3	-8.4	-4.3	-0.2			
21	Animals		-16.1	-14.3	-10.1	-2.8	3.8			
21 A	Calves		2.2	-0.5	-5.8	-0.6	-2.6			
21 B	Cattle excluding calves		-3.5	-5.1	-4.7	-4.9	-0.8			
21 C	Pigs		-37.9	-32.7	-17.8	6.4	20.8			
21 D	Sheep and lambs		-12.4	-8.9	-9.1	-12.3	2.9			
21 E	Poultry		-6.6	-5.1	-9.6	-11.4	-6.9			
21 F	Other animals		-5.4	-9.3	-9.5	-4.8	-2.7			
22	Milk		0.1	-3.0	-5.0	-5.9	-5.1			
23	Eggs		-10.0	-11.5	-11.6	-10.9	-4.9			
24	Other animal products		-15.8	-21.8	-11.5	3.0	9.8			

Table 2

**Index of producer prices of agricultural products:
Rates of change by Member State**

(%)

	Total				Crop Products				Animals and anim. Products			
	I.1999	II.1999	III.1999	IV. 1999	I.1999	II.1999	III.1999	IV. 1999	I.1999	II.1999	III.1999	IV. 1999
NOMINAL INDICES												
B	5.6	-4.6	-7.5	-8.9	36.2	6.6	-3.5	-19.3	-12.4	-12.5	-10.0	-0.8
DK	-11.8	-7.5	-1.4	5.3	-4.3	-2.1	-4.0	0.1	-15.9	-10.8	0.2	8.5
D	-8.9	-4.8	-0.3	-0.3	-2.2	1.6	3.6	-6.2	-12.3	-8.1	-2.3	2.7
EL	3.8	0.6	-2.6	1.4	4.0	0.1	-4.9	0.5	3.3	1.9	4.0	4.1
E	1.9	-2.0	-3.8	-0.7	10.7	2.3	-3.5	-2.5	-13.7	-9.4	-4.4	3.0
F	-2.3	-3.5	-3.4	-1.4	2.0	-1.7	-4.4	-2.4	-6.7	-5.6	-2.4	-0.2
IRL	-4.9	-6.2	-4.8	-1.0	19.9	0.9	-5.1	-11.8	-8.3	-7.3	-4.8	0.8
I	1.9	-5.7	-5.3	-2.6	5.4	-5.2	-6.4	-5.2	-3.9	-6.7	-3.5	1.6
L	-4.7	-3.1	-3.7	-4.2	-3.2	-3.2	-2.0	-0.1	-5.1	-3.1	-4.1	-5.0
NL	-6.1	-11.0	-8.7	-6.6	5.1	-6.9	-11.2	-13.9	-18.3	-15.3	-6.3	2.1
A	-8.3	-4.5	-1.0	3.2	-0.7	4.4	-5.0	-1.3	-10.6	-7.2	0.3	4.7
P	1.7	4.2	-4.2	-9.0	15.2	12.2	-7.0	-15.3	-14.4	-5.6	-0.6	0.8
FIN	1.7	1.3	-3.8	-3.4	8.5	9.4	-9.7	-11.9	-1.1	-2.0	-1.4	0.1
S	2.5	0.7	-1.0	-2.5	24.2	17.6	9.8	-10.6	-5.3	-5.6	-5.0	0.9
UK	0.5	-4.8	-5.6	-7.6	11.6	-6.7	-10.2	-15.4	-6.1	-3.5	-2.7	-2.0
EU-15	-1.3	-4.0	-3.9	-2.2	6.1	-1.2	-4.9	-5.5	-9.0	-7.1	-2.9	1.5
DEFLATED INDICES												
B	4.4	-5.4	-8.3	-10.3	34.7	5.7	-4.4	-20.6	-13.4	-13.2	-10.9	-2.4
DK	-13.0	-9.1	-3.6	2.5	-5.6	-3.8	-6.1	-2.6	-17.1	-12.4	-2.0	5.5
D	-9.2	-5.3	-1.0	-1.4	-2.4	1.1	2.9	-7.3	-12.5	-8.6	-3.0	1.6
EL	0.4	-1.6	-4.2	-0.7	0.6	-2.0	-6.4	-1.7	-0.1	-0.3	2.3	1.8
E	0.1	-4.1	-6.0	-3.2	8.7	0.1	-5.7	-5.0	-15.3	-11.3	-6.6	0.4
F	-2.6	-3.9	-3.9	-2.4	1.6	-2.1	-4.9	-3.4	-7.0	-5.9	-2.9	-1.3
IRL	-6.9	-8.2	-7.0	-4.1	17.4	-1.2	-7.2	-14.6	-10.2	-9.3	-6.9	-2.4
I	0.5	-7.1	-7.0	-4.5	4.0	-6.5	-8.0	-7.1	-5.2	-8.0	-5.2	-0.4
L	-4.6	-4.3	-4.5	-6.1	-3.1	-4.4	-2.8	-2.0	-5.0	-4.3	-4.9	-6.9
NL	-8.0	-12.8	-10.6	-8.4	3.0	-8.8	-13.1	-15.5	-20.0	-17.0	-8.3	0.2
A	-8.5	-4.7	-1.4	2.1	-0.9	4.1	-5.4	-2.4	-10.8	-7.4	-0.2	3.5
P	-0.9	1.9	-6.0	-10.6	12.1	9.7	-8.7	-16.8	-16.7	-7.7	-1.4	-1.0
FIN	0.9	0.0	-5.0	-5.2	7.7	8.0	-10.8	-13.5	-1.8	-3.3	-2.7	-1.8
S	2.3	0.4	-1.7	-3.4	23.9	17.2	9.0	-11.4	-5.6	-5.9	-5.6	-0.1
UK	-1.0	-6.1	-6.8	-8.7	9.9	-7.9	-11.3	-16.4	-7.5	-4.9	-3.9	-3.1
EU-15	-2.9	-5.5	-5.2	-4.0	4.6	-2.6	-6.2	-7.5	-10.3	-8.4	-4.3	-0.2

Table 3

**EU Index of purchase prices of the means of agricultural production:
Rates of change of the price indices for EU-15**

	<i>(%)</i>				
	IV.1998	I. 1999	II. 1999	III.1999	IV 1999
NOMINAL INDICES					
00 TOTAL	-3.2	-2.7	-1.8	-0.1	1.6
01 GOODS AND SERVICES CURRENTLY CONSUMED IN AGRICULTURE	-4.7	-4.2	-2.8	-0.5	1.7
1 Seeds	1.7	3.6	-0.2	2.2	-0.4
2 Animals for rearing	-20.1	-19.8	-11.3	0.3	8.3
3 Energy	-8.8	-6.1	1.2	7.8	16.6
4 Fertilizers	-2.5	-3.4	-3.9	-4.3	-5.1
5 Plant protection products	-1.0	-0.5	-0.2	0.8	0.9
6 Animal feedingstuffs	-9.3	-8.8	-6.7	-4.6	-1.4
7 Small tools	1.1	0.6	-0.8	-1.4	-0.6
8 Maintenance and repair of plant	1.2	1.7	0.7	2.5	2.8
9 Maintenance and repair of buildings	1.2	0.9	0.4	0.5	0.8
10 Veterinary services	1.7	0.9	0.3	2.6	3.8
11 General expenses	-0.3	-0.4	-0.2	1.0	1.8
02 GOODS AND SERVICES CONTRIBUTING TO AGRICULTURE INVESTMENT	1.0	1.2	0.8	0.8	1.3
12 Machinery	1.5	1.1	0.5	0.6	0.9
13 Buildings	0.3	1.4	1.3	1.2	1.8
DEFLATED INDICES					
00 TOTAL	-4.3	-3.9	-3.0	-1.4	-0.1
01 GOODS AND SERVICES CURRENTLY CONSUMED IN AGRICULTURE	-5.8	-5.4	-4.0	-1.8	0.0
1 Seeds	0.7	2.3	-1.4	1.0	-1.9
2 Animals for rearing	-21.4	-20.9	-12.1	-0.3	7.4
3 Energy	-9.9	-7.3	-0.1	7.0	15.0
4 Fertilizers	-3.4	-4.3	-4.8	-5.5	-6.7
5 Plant protection products	-2.2	-1.7	-1.3	-0.5	-0.6
6 Animal feedingstuffs	-10.7	-10.2	-8.2	-6.1	-3.2
7 Small tools	-0.3	-0.8	-2.1	-2.7	-2.2
8 Maintenance and repair of plant	0.3	0.7	-0.2	1.3	1.2
9 Maintenance and repair of buildings	0.1	-0.2	-0.8	-0.8	-0.7
10 Veterinary services	0.8	0.0	-0.7	1.5	2.4
11 General expenses	-1.1	-1.3	-1.3	-0.2	0.2
02 GOODS AND SERVICES CONTRIBUTING TO AGRICULTURE INVESTMENT	-0.2	0.0	-0.3	-0.5	-0.4
12 Machinery	0.3	0.1	-0.5	-0.6	-0.6
13 Buildings	-1.1	0.0	-0.1	-0.3	-0.1

Table 4

**Index of purchase prices of the means of agricultural production
Rates of change by Member State**

(%)

	Total				Consumption goods				Investment goods			
	I. 1999	II. 1999	III.1999	IV 1999	I. 1999	II. 1999	III.1999	IV 1999	I. 1999	II. 1999	III.1999	IV 1999
NOMINAL INDICES												
B	-3.9	-0.6	1.7	2.9	-4.9	-1.0	1.6	3.1	1.6	1.4	2.2	2.2
DK	-2.3	-1.0	-0.6	0.3	-3.5	-1.9	-1.3	-0.2	2.3	2.3	2.1	1.8
D	-4.5	-2.0	1.1	3.4	-6.3	-3.0	1.2	4.3	0.7	0.8	0.9	0.9
EL	0.7	1.1	0.4	4.2	-0.3	1.1	0.1	5.1	4.1	1.2	1.1	1.2
E	-3.1	-3.5	-0.7	2.5	-3.8	-3.9	-0.2	2.6	0.4	-1.4	-3.1	2.0
F	-3.2	-1.8	-0.6	1.0	-4.2	-2.5	-1.1	0.9	0.9	1.0	1.3	1.3
IRL	-0.3	0.4	1.7	2.6	-1.2	0.1	1.5	3.1	2.4	1.4	2.0	1.0
I	-1.0	-0.8	-0.1	0.6	-3.4	-2.6	-1.0	0.2	1.1	0.8	0.8	0.9
L	-1.0	-0.1	0.8	1.4	-3.2	-1.4	0.0	1.1	1.7	1.6	1.7	1.8
NL	-2.8	-4.0	-1.2	0.6	-4.6	-6.3	-2.6	0.0	2.5	2.5	2.5	2.5
A	-2.8	-1.6	-0.5	1.4	-5.9	-3.7	-1.6	1.8	1.1	0.9	1.0	1.0
P	1.4	0.4	0.5	-0.3	1.7	0.4	-0.2	-0.9	0.7	0.2	2.2	2.1
FIN	-2.1	-1.6	-0.2	1.4	-4.0	-3.3	-1.5	0.8	1.6	1.8	2.2	2.3
S	-2.2	-1.0	0.3	1.6	-3.1	-1.5	0.3	1.8	0.6	0.5	0.5	0.9
UK	-4.3	-2.5	-0.9	-0.4	-5.3	-3.2	-1.3	-0.7	1.4	0.9	1.1	1.0
EU-15	-2.7	-1.8	-0.1	1.6	-4.2	-2.8	-0.5	1.7	1.2	0.8	0.8	1.3
DEFLATED INDICES												
B	-5.0	-1.5	0.8	1.2	-5.9	-1.8	0.7	1.4	0.5	0.6	1.2	0.6
DK	-3.6	-2.7	-2.8	-2.5	-4.8	-3.6	-3.5	-2.9	1.0	0.5	-0.2	-0.9
D	-4.8	-2.5	0.5	2.3	-6.6	-3.5	0.5	3.2	0.4	0.3	0.3	-0.2
EL	-2.6	-1.1	-1.3	2.0	-3.6	-1.1	-1.5	2.9	0.7	-1.0	-0.6	-1.0
E	-4.8	-5.6	-2.9	-0.1	-5.5	-6.0	-2.5	0.0	-1.4	-3.5	-5.3	-0.6
F	-3.5	-2.2	-1.1	0.0	-4.5	-2.9	-1.6	-0.1	0.6	0.6	0.8	0.3
IRL	-2.4	-1.7	-0.6	-0.6	-3.2	-2.0	-0.8	-0.1	0.2	-0.7	-0.3	-2.2
I	-2.4	-2.2	-1.8	-1.4	-4.7	-3.9	-2.7	-1.8	-0.3	-0.6	-1.0	-1.0
L	-0.9	-1.3	-0.1	-0.6	-3.1	-2.6	-0.8	-0.9	1.7	0.4	0.8	-0.2
NL	-4.7	-6.0	-3.3	-1.2	-6.5	-8.2	-4.6	-1.9	0.5	0.4	0.4	0.6
A	-3.1	-1.9	-0.9	0.3	-6.1	-3.9	-2.1	0.6	0.8	0.7	0.5	-0.2
P	-1.2	-1.9	-1.5	-2.0	-1.0	-1.8	-2.0	-2.7	-1.9	-2.1	0.3	0.3
FIN	-2.9	-2.8	-1.5	-0.5	-4.7	-4.5	-2.8	-1.0	0.8	0.5	0.9	0.5
S	-2.4	-1.4	-0.4	0.6	-3.3	-1.9	-0.4	0.9	0.3	0.2	-0.2	0.0
UK	-5.7	-3.9	-2.1	-1.6	-6.8	-4.5	-2.5	-1.9	-0.2	-0.5	-0.1	-0.2
EU-15	-3.9	-3.0	-1.4	-0.1	-5.4	-4.0	-1.8	0.0	0.0	-0.3	-0.5	-0.4

Further information:

➤ Databases

New Cronos
Domain PRAG

To obtain information or to order publications, databases and special sets of data, please contact the **Data Shop** network:

BELGIQUE/BELGIË	DANMARK	DEUTSCHLAND	ESPAÑA	FRANCE	ITALIA – Roma
Eurostat Data Shop Bruxelles/Brussel Planistat Belgique 124 Rue du Commerce Handelsstraat 124 B-1000 BRUXELLES / BRUSSEL Tel. (32-2) 234 67 50 Fax (32-2) 234 67 51 E-Mail: datashop@planistat.be	DANMARKS STATISTIK Bibliotek og Information Eurostat Data Shop Sejrøgade 11 DK-2100 KØBENHAVN Ø Tel. (45-39) 17 30 30 Fax (45-39) 17 30 03 E-Mail: bib@dst.dk	STATISTISCHES BUNDESAMT Eurostat Data Shop Berlin Otto-Braun-Straße 70-72 D-1 0178 BERLIN Tel. (49-30) 23 24 64 27/28 Fax (49-30) 23 24 64 30 E-Mail: datashop@statistik-bund.de	INE Eurostat Data Shop Paseo de la Castellana, 183 Oficina 009 Entrada por Estébanez Calderón E-28046 MADRID Tel. (34-91) 583 91 67 Fax (34-91) 579 71 20 E-Mail: datashop.eurostat@ine.es	INSEE Info Service Eurostat Data Shop 195, rue de Bercy Tour Gamma A F-75582 PARIS CEDEX 12 Tel. (33-1) 53 17 88 44 Fax (33-1) 53 17 88 22 E-Mail: datashop@insee.fr	ISTAT Centro di Informazione Statistica Sede di Roma, Eurostat Data Shop Via Cesare Balbo, 11a I-00184 ROMA Tel. (39-06) 46 73 31 02/06 Fax (39-06) 46 73 31 01/07 E-Mail: dipdiff@istat.it
ITALIA – Milano	LUXEMBOURG	NEDERLAND	NORGE	PORTUGAL	SCHWEIZ/SUISSE/SVIZZERA
ISTAT Ufficio Regionale per la Lombardia Eurostat Data Shop Via Fieno 3 I-20123 MILANO Tel. (39-02) 8061 32460 Fax (39-02) 8061 32304 E-mail: mileuro@tin.it	Eurostat Data Shop Luxembourg BP 453 L-2014 LUXEMBOURG 4, rue A. Weicker L-2721 LUXEMBOURG Tel. (352) 43 35 22 51 Fax (352) 43 35 22 21 E-Mail: dslux@eurostat.datashop.lu	STATISTICS NETHERLANDS Eurostat Data Shop-Voorburg po box 4000 2270 JM VOORBURG Nederland Tel. (31-70) 337 49 00 Fax (31-70) 337 59 84 E-Mail: datashop@cbs.nl	Statistics Norway Library and Information Centre Eurostat Data Shop Kongens gate 6 P. b. 81 31, dep. N-0033 OSLO Tel. (47-22) 86 46 43 Fax (47-22) 86 45 04 E-Mail: datashop@ssb.no	Eurostat Data Shop Lisboa INE/Serviço de Difusão Av. António José de Almeida, 2 P-1000-043 LISBOA Tel. (351-21) 842 61 00 Fax (351-21) 842 63 64 E-Mail: data.shop@ine.pt	Statistisches Amt des Kantons Zürich, Eurostat Data Shop Bleicherweg 5 CH-8090 Zürich Tel. (41-1) 225 12 12 Fax (41-1) 225 12 99 E-Mail: datashop@zh.ch Internetadresse: http://www.zh.ch/statistik
SUOMI/FINLAND	SVERIGE	UNITED KINGDOM	UNITED KINGDOM	UNITED STATES OF AMERICA	
Eurostat Data Shop Helsinki Tilastokirjasto Postiosoite: PL 2B Käyntiosoite: Työpajakatu 13 B, 2 krs FIN-00022 Tilastokeskus Tel. (358-9) 17 34 22 21 Fax (358-9) 17 34 22 79 S-posti: datashop.tilastokeskus@tilastokeskus.fi Internetadresse: http://www.tilastokeskus.fi/tilastokeskus.html	STATISTICS SWEDEN Information service Eurostat Data Shop Karlavägen 100 - Box 24 300 S-104 51 STOCKHOLM Tel. (46-8) 50 69 48 01 Fax (46-8) 50 69 48 99 E-Mail: info.service@scb.se URL: http://www.scb.se/info/datashop/ eu.datashop.asp	Eurostat Data Shop Enquiries & advice and publications Office for National Statistics Customers & Electronic Services Unit 1 Drummond Gate - B1/05 UK-LONDON SW1V 2QQ Tel. (44-171) 533 56 76 Fax (44-1633) 812 762 E-Mail: eurostat.datashop@ons.gov.uk	Eurostat Data Shop Electronic Data Extractions, Enquiries & advice - R.CADE Unit 1L Mounjony Research Centre University of Durham UK - DURHAM DH1 3SW Tel: (44-191) 374 7350 Fax: (44-191) 384 4971 E-Mail: r.cade@dur.ac.uk URL: http://www.r.cade.dur.ac.uk	HAVER ANALYTICS Eurostat Data Shop 60 East 42nd Street Suite 3310 USA-NEW YORK, NY 10165 Tel. (1-212) 986 93 00 Fax (1-212) 986 58 57 E-Mail: eurodata@haver.com	

Media Support Eurostat (for professional journalists only).
 Bech Building Office A3/48 - L-2920 Luxembourg • Tel. (352) 4301 33408 • Fax (352) 4301 32649 • e-mail: media.support@cec.eu.int

For information on methodology

G. Mahon/J. De Clerck/P. Brunori, Eurostat/ F1, L-2920 Luxembourg, Tel. (352) 4301 37310, Fax (352) 4301-37317, ORIGINAL: English

Please visit our web site at www.europa.eu.int/comm/eurostat/ for further information!

A list of worldwide sales outlets is available at the **Office for Official Publications of the European Communities.**

2 rue Mercier - L-2985 Luxembourg
 Tel. (352) 2929 42118 Fax (352) 2929 42709
 Internet Address <http://eur-op.eu.int/fr/general/s-ad.htm>
 e-mail: info.info@cec.eu.int

BELGIQUE/BELGIË - DANMARK - DEUTSCHLAND - GREECE/ELLADA - ESPAÑA - FRANCE - IRELAND - ITALIA - LUXEMBOURG - NEDERLAND - ÖSTERREICH
 PORTUGAL - SUOMI/FINLAND - SVERIGE - UNITED KINGDOM - ISLAND - NORGE - SCHWEIZ/SUISSE/SVIZZERA - BALGARIJA - CESHÁ REPUBLIKA - CYPRUS
 EESTI - HRVATSKA - MAGYARORSZÁG - MALTA - POLSKA - ROMÂNIA - RUSSIA - SLOVAKIA - SLOVENIA - TÜRKIYE - AUSTRALIA - CANADA - EGYPT - INDIA
 ISRAËL - JAPAN - MALAYSIA - PHILIPPINES - SOUTH KOREA - THAILAND - UNITED STATES OF AMERICA

Order form

I would like to subscribe to Statistics in focus (from 1.1.2000 to 31.12.2000):
 (for the Data Shop and sales office addresses see above)

Formula 1: All 9 themes (approximately 140 issues)

Paper: EUR 360

PDF: EUR 264

Paper + PDF: EUR 432

Language required: DE EN FR

Formula 2: One or more of the following seven themes:

Theme 1 'General statistics'

Paper: EUR 42 PDF: EUR 30 Combined: EUR 54

Theme 2 'Economy and finance'

Theme 3 'Population and social conditions'

Theme 4 'Industry, trade and services'

Theme 5 'Agriculture and fisheries'

Theme 6 'External trade'

Theme 8 'Environment and energy'

Paper: EUR 84 PDF: EUR 60 Combined: EUR 114

Language required: DE EN FR

Please send me a free copy of 'Eurostat Mini-Guide' (catalogue containing a selection of Eurostat products and services)

Language required: DE EN FR

I would like a free subscription to 'Statistical References', the information letter on Eurostat products and services

Language required: DE EN FR

Mr Mrs Ms

(Please use block capitals)

Surname: _____ Forename: _____

Company: _____ Department: _____

Function: _____

Address: _____

Post code: _____ Town: _____

Country: _____

Tel.: _____ Fax: _____

E-mail: _____

Payment on receipt of invoice, preferably by:

Bank transfer

Visa Eurocard

Card No: _____ Expires on: ____/____/____

Please confirm your intra-Community VAT number:

If no number is entered, VAT will be automatically applied. Subsequent reimbursement will not be possible.