



EUROPEAN COMMISSION

Brussels, 30.5.2011
SEC(2011) 596 final

COMMISSION STAFF WORKING PAPER

Technical annexes

Accompanying the document

**Annual Report on the implementation of Council Regulation (EC) 866/2004 of 29 April
2004 and the situation resulting from its application**

{COM(2011) 284 final}

**Overview table summarising the monthly reports of the Turkish Cypriot
Chamber of Commerce according to Article 8 of Commission Regulation
EUR**

Traded Products	May 10	June 10	July 10	August 10	September 10	October 10	November 10	December 10	Total	%
Building/ Articles of Stone	63.599	44.738	107.783	63.737	163.662	81.470	131.907	71.275	728.170	16,2%
Fish	98.215	110.659	87.624	75.952	62.838	70.859	94.170	85.685	686.002	15,2%
Plastic Products	81.755	90.942	91.062	64.198	65.327	77.248	107.383	72.650	650.565	14,4%
Ceramic products/refractory goods	74.023	79.059	58.384	41.135	218.026	36.426	9.422	7.356	523.830	11,6%
Raw metal	50.671	35.556	22.178	58.661	40.504	43.349	115.995	46.842	413.755	9,2%
Vegetables	30.650	5.010	61.933	26.150	7.400	44.899	170.685	1.739	348.466	7,7%
Aluminium/ PVC Products	10.016	5.734	99.305	102.801	11.305	39.648	5.254	4.910	278.973	6,2%
Chemical Products	33.903	35.491	30.600	18.495	29.175	21.076	17.071	19.094	204.906	4,5%
Wooden products/ furniture	14.757	24.030	28.706	25.214	27.327	27.050	12.522	39.781	199.387	4,4%
Earth and stone	4.907	6.499	43.732	0	0	135.781	3.000	0	193.920	4,3%
Miscellaneous/Manufactured articles	11.790	10.012	17.317	2.412	18.420	14.547	11.821	14.234	100.552	2,2%
Textile articles	0	15.255	0	15.950	0	13.950	0	7.500	52.655	1,2%
Vegetable residues and by-products	0	2.433	0	2.186	0	1.993	0	33.360	39.973	0,9%
Paper Products	8.318	2.756	4.779	2.400	1.200	2.850	2.400	3.600	28.303	0,6%
Glass and glassware	5.510	2.940	2.975	300	2.810	3.680	2.420	0	20.635	0,5%
Handicraft products	1.549	1.512	1.755	0	2.228	383	4.370	900	12.696	0,3%
Iron/Steel	2.672	2.062	191	359	1.667	5.670	70	0	12.691	0,3%
Prepared Foodstuffs	1.513	2.200	2.200	1.100	0	0	0	0	7.013	0,2%
Paintings	0	900	0	0	0	0	0	0	900	0,0%
Pastrycooks' products	400	0	0	0	0	0	0	0	400	0,0%
Wood	0	0	0	0	0	0	0	0	0	0,0%
Water Storage/heating	0	0	0	0	0	0	0	0	0	0,0%
Saddlery and Harness	0	0	0	0	0	0	0	0	0	0,0%
Printed Books, newspapers etc.	0	0	0	0	0	0	0	0	0	0,0%
Pre-fabricated buildings	0	0	0	0	0	0	0	0	0	0,0%
Electronic Equipment	0	0	0	0	0	0	0	0	0	0,0%
Total	494.248	477.789	660.523	501.049	651.889	620.878	688.491	408.924	4.503.793	100,0%

**Annex II: Value of goods crossing the Green Line reported by the
authorities of the**

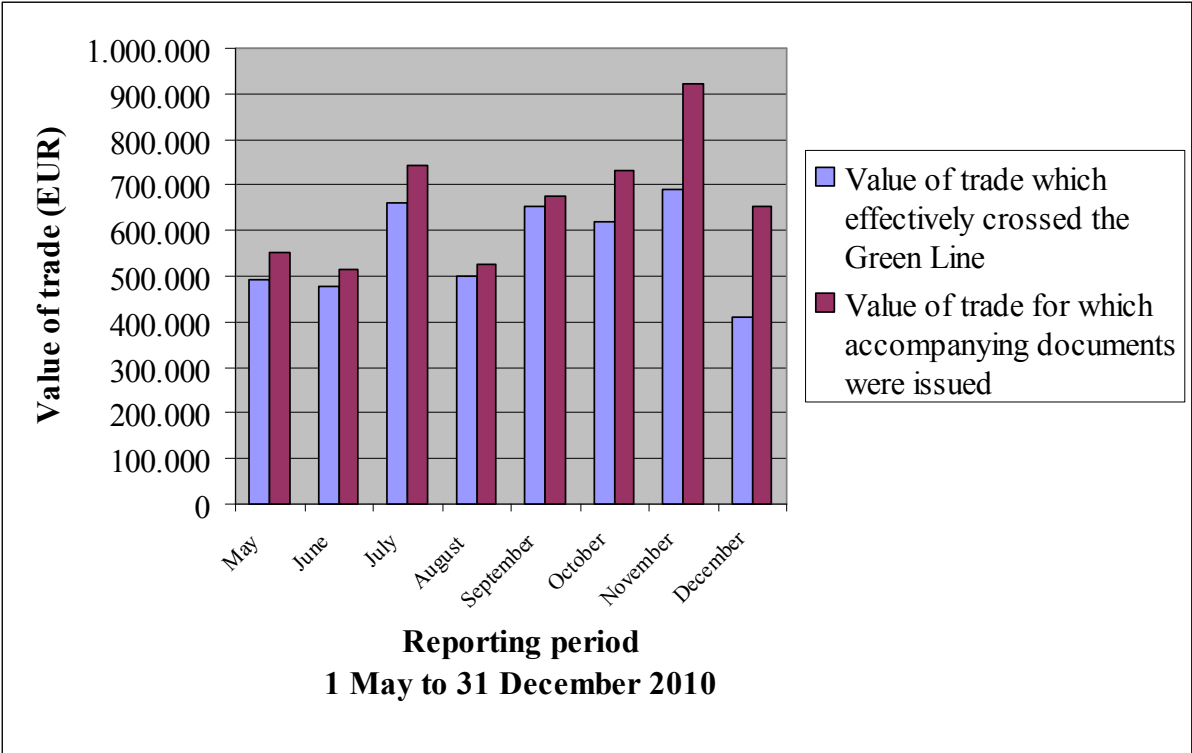
Republic of Cyprus (May 2010-December 2010)

May	459.039
June	438.389
July	571.619
August	440.262
September	383.417
October	496.558
November	608.156
December	464.394
TOTAL	3.861.834

Source: table based on data received from the Cyprus Chamber of Commerce and Industry

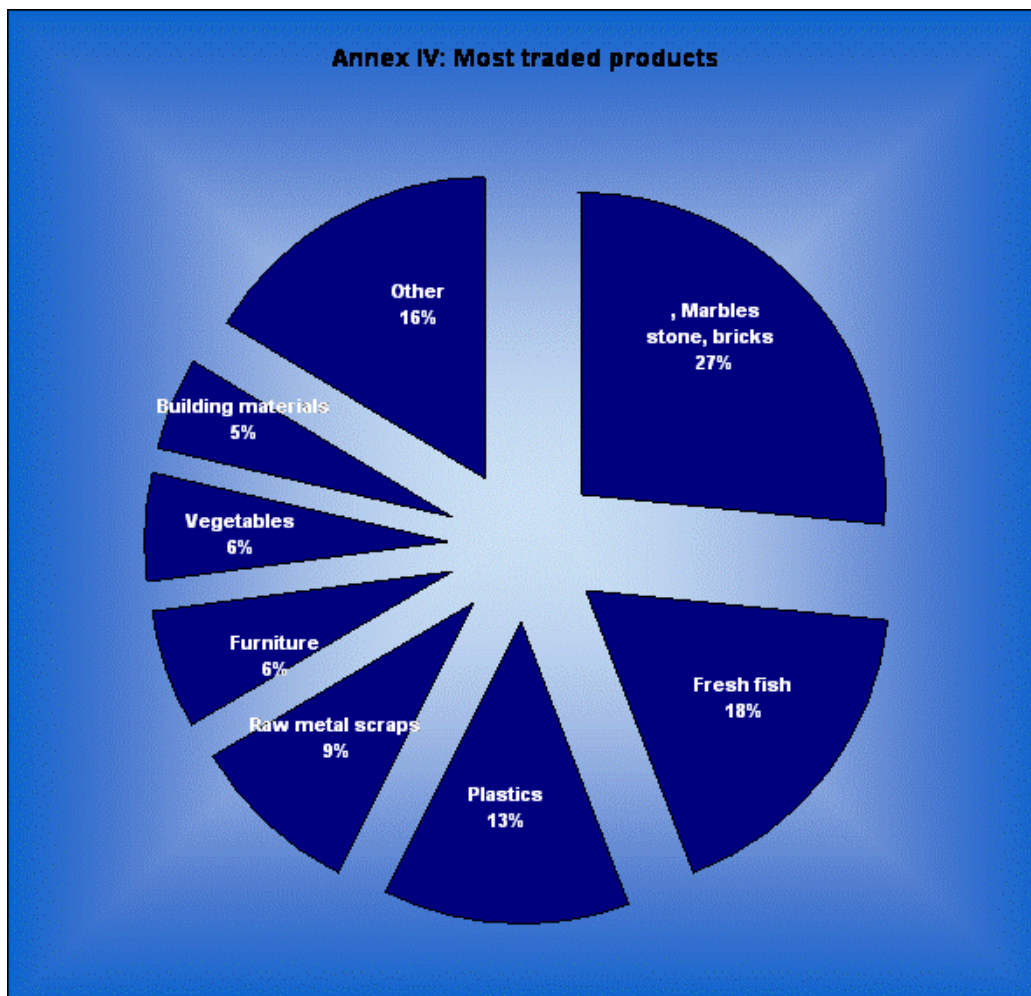
Annex III:

Values of goods which crossed the Green Line and value of goods for which accompanying documents were issued by the Turkish Cypriot Chamber of Commerce



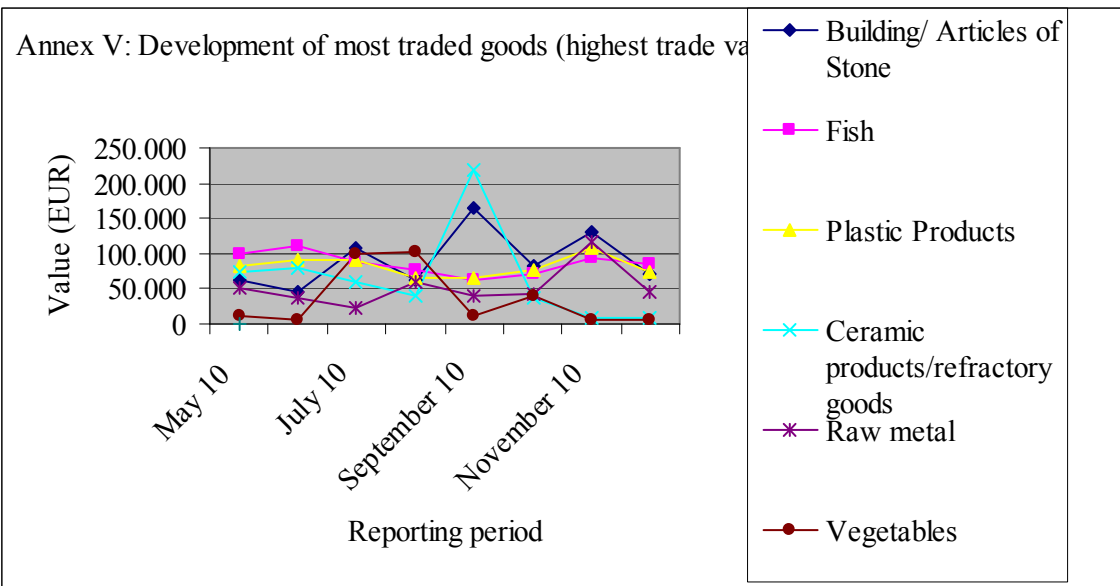
Source: goods effectively crossed - table based on data received from the Cyprus Chamber of Commerce and Industry

Annex IV



	EUR	
Marbles, stone, bricks	1.026.223	27%
Fresh fish	681.610	18%
Plastics	498.036	13%
Raw metal scraps	353.813	9%
Furniture	247.980	6%
Vegetables	230.568	6%
Building material	194.187	5%
Other	629.416	16%
	3.861.834	

Source: table based on data received from the Cyprus Permanent Representation to the EU



Source: graph based on data received from the Turkish Cypriot Chamber of Commerce

Annex VI

REPUBLIC OF CYPRUS
ILLEGAL IMMIGRATION STATISTICAL DATA
FOR THE PERIOD 01/05/2010-31/12/2010

MONTH /YEAR	ILLEGAL IMMIGRANTS from the areas in which the Republic of Cyprus DOES NOT exercise effective control			ILLEGAL IMMIGRANTS from the areas in which the Republic of Cyprus exercises effective control			ILLEGAL IMMIGRANTS from the British Sovereign Base Areas (7)
	NOT APPLIED FOR ASYLUM (1)	APPLIED FOR ASYLUM (2)	VOLUNTARY DEPARTURE (3)	NOT APPLIED FOR ASYLUM (4)	APPLIED FOR ASYLUM (5)	VOLUNTARY DEPARTURE (6)	
May 2010	25	85	58	0	0	0	4
June 2010	15	54	51	0	0	0	0
July 2010	18	66	73	0	0	0	2
August 2010	12	67	80	0	0	0	0
September 2010	17	81	38	0	0	0	3
October 2010	13	105	31	0	0	0	2
November 2010	20	101	40	0	0	0	0
December 2010	35	58	53	0	0	0	2
TOTAL	155	617	424	0	0	0	13

TOTAL	1196 (total number of 1+2+3) (98,92%)	0 (total number of 4+5+6) (%)	13 (total number of 7) (1,08%)
GRAND TOTAL	1209 (total number of 1+2+3+4+5+6+7) (100%)		

Police Headquarters

Movement of G/C and T/C persons and vehicles across the crossing points as per Council Regulation no.866/04 (01/05/2010 - 31/12/2010)

MONTH	MOVEMENTS OF PERSONS			MOVEMENTS OF VEHICLES		
	GREEK-CYPRIOIS	TURKISH - CYPRIOIS	TOTAL	VEHICLES GCs	VEHICLES TCs	TOTAL
05 / 2010	55856	87720	143576	15326	29748	45074
06 / 2010	48181	85606	133787	14023	29217	43240
07 / 2010	52210	92510	144720	15170	32163	47333
08 / 2010	51129	82349	133478	15165	29343	44508
09 / 2010	45397	104832	150229	11659	34200	45859
10 / 2010	55964	96636	152600	16552	33722	50274
11 / 2010	52042	101755	153797	15956	34841	50797
12 / 2010	54376	86929	141305	16822	30836	47658
TOTAL	415155	738337	1153492	120673	254070	374743

Source: Police Headquarters, Operations Branch, 20/1/2011

Annex VIII

COUNTRIES OF ORIGIN OF APPREHENDED ILLEGAL IMMIGRANTS
WITH A VISA OR A STAMP IN THEIR PASSPORT FROM TURKEY OR so-called “TRNC”

May 2010- December 2010

<i>NATIONALITY</i>	<i>TOTAL</i>	ENTRY/EXIT STAMPS FROM TURKEY	“ENTRY/EXIT STAMPS” FROM so-called “TRNC”	VISA ISSUED FROM TURKEY VALID ALSO FOR so-called “TRNC”	“VISA/RESIDENCE PERMIT” ISSUED FROM so-called “TRNC”
<i>SYRIA</i>	387	213	77	169	0
<i>WEST BANK (PALESTINE)</i>	113	13	13	4	0
<i>IRAN</i>	109	61	68	0	0
<i>GEORGIA</i>	87	40	38	3	0
<i>PAKISTAN</i>	85	3	42	1	0
<i>IRAQ</i>	85	10	8	7	0
<i>NIGERIA</i>	81	4	9	1	0
<i>BAGLADESH</i>	79	15	27	12	0

<i>NATIONALITY</i>	<i>TOTAL</i>	ENTRY/EXIT STAMPS FROM TURKEY	“ENTRY/EXIT STAMPS” FROM so-called “TRNC”	VISA ISSUED FROM TURKEY VALID ALSO FOR so-called “TRNC”	“VISA/RESIDENCE PERMIT” ISSUED FROM so-called “TRNC”
<i>MOLDOVIA</i>	73	34	70	19	0
<i>INDIA</i>	39	0	36	1	0
<i>CAMEROON</i>	36	1	16	1	0
<i>SRI LANKA</i>	30	0	24	0	0
<i>CHINA</i>	30	10	21	1	0
<i>TURKEY</i>	27	3	2	0	0
<i>UKRAINE</i>	24	19	13	2	0
<i>JORDAN</i>	20	15	17	1	0
<i>LEBANON</i>	15	5	8	1	0
<i>AFGHANISTAN</i>	13	0	0	0	0
<i>GHANA</i>	11	0	8	0	0
<i>ARMENIA</i>	10	8	6	2	0
<i>GUINEA</i>	9	0	0	0	0

<i>NATIONALITY</i>	<i>TOTAL</i>	ENTRY/EXIT STAMPS FROM TURKEY	“ENTRY/EXIT STAMPS” FROM so-called “TRNC”	VISA ISSUED FROM TURKEY VALID ALSO FOR so-called “TRNC”	“VISA/RESIDENCE PERMIT” ISSUED FROM so-called “TRNC”
<i>UZBEKISTAN</i>	7	6	4	0	0
<i>MOGGOLIA</i>	6	6	6	0	0
<i>EGYPT</i>	6	4	5	1	0
<i>RUSSIA</i>	5	1	2	0	0
<i>MOROCCO</i>	5	4	5	0	0
<i>TOGO</i>	5	0	0	0	0
<i>VIETNAM</i>	3	0	3	0	0
<i>ALGERIA</i>	3	2	3	0	0
<i>CONGO</i>	2	0	0	0	0
<i>KYRGYZSTAN</i>	2	1	2	0	0
<i>KAZAKSTAN</i>	2	1	0	0	0
<i>MALI</i>	2	0	1	0	0

<i>NATIONALITY</i>	<i>TOTAL</i>	ENTRY/EXIT STAMPS FROM TURKEY	“ENTRY/EXIT STAMPS” FROM so-called “TRNC”	VISA ISSUED FROM TURKEY VALID ALSO FOR so-called “TRNC”	“VISA/RESIDENCE PERMIT” ISSUED FROM so-called “TRNC”
<i>ALBANIA</i>	2	0	0	0	0
<i>BOSNIA & HERZEGOVINA</i>	1	1	1	0	0
<i>CENTRAL AFRICA</i>	1	0	0	0	0
<i>CHAD</i>	1	0	0	0	0
<i>GAMBIA</i>	1	0	0	0	0
<i>KENYA</i>	1	1	1	1	0
<i>SOUTH AFRICA</i>	1	1	1	1	0
<i>ZIMBABWE</i>	1	0	0	0	0
<i>TOTAL</i>	1420	482	537	228	0

SOURCE: Police Headquarters, Aliens & Immigration Department, 18/01/2011