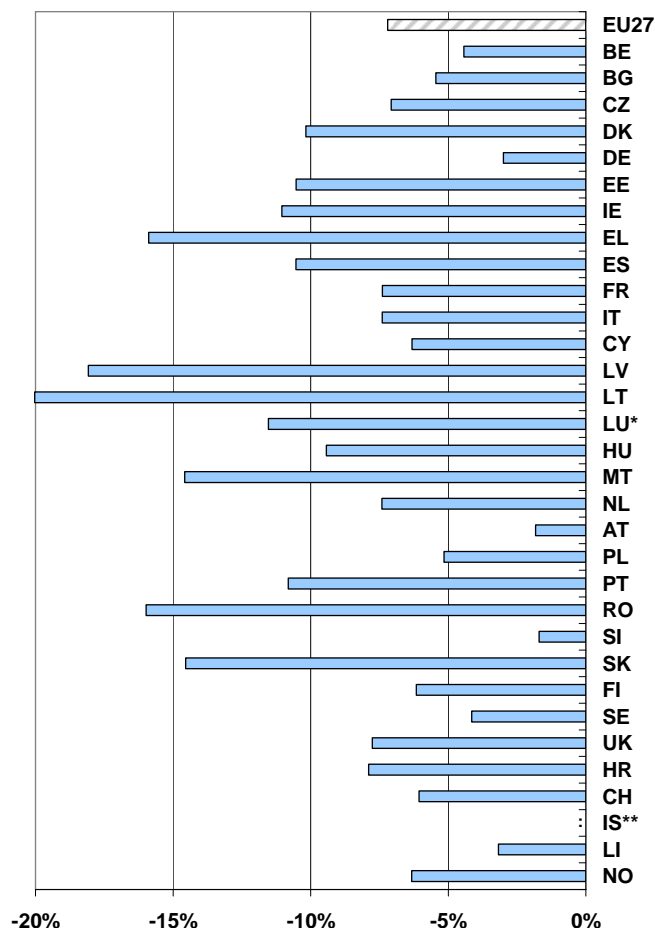


Winter season¹ tourism trends 2008/2009

In the 2008/2009 winter season, the number of nights spent in hotels and similar establishments in the European Union dropped by 7.2% (-42.6 million nights) compared to the same period in 2007/2008. A negative growth was observed in all 27 Member States.

Figure 1: Percentage change in number of nights spent in hotels and similar establishments, non-residents and residents, November 2008 – April 2009 compared with the same period in 2007/2008.



(*) Luxembourg: data not available for March and April 2009. 2008/2009 winter season estimation based on previous year's data.

(**) Iceland: 2009 data not available.

Source: Eurostat (tour_occ_nim)

¹ The winter season runs from November to April of the following year. For example, the 2008/2009 winter season ran from November 2008 to April 2009.

Except for the three Baltic countries (Estonia, Latvia and Lithuania), the decrease was mainly due to non-residents (-25.6 million nights at EU-27 level), although the nights spent by residents also dropped in most of the Member States (-17.0 million at EU-27 level).

Table 1: Nights spent in hotels and similar establishments, non-residents and residents, November 2008 – April 2009 compared with November 2007 – April 2008.

('000)	Winter season 2007-2008				Winter season 2008-2009				2008-9 / 2007-8 change (in %)		
	Total	of which:		Non-residents as % of Total	Total	of which:		Non-residents as % of Total	Total	of which:	
		Non-residents	Residents			Non-residents	Residents			Non-residents	Residents
EU27	591 213	254 529	336 685	43.1%	548 622	228 920	319 702	41.7%	-7.2%	-10.1%	-5.0%
BE	7 224	4 946	2 278	68.5%	6 904	4 630	2 274	67.1%	-4.4%	-6.4%	-0.2%
BG	3 346	1 334	2 012	39.9%	3 163	1 184	1 979	37.4%	-5.4%	-11.2%	-1.6%
CZ	11 718	7 711	4 007	65.8%	10 889	6 834	4 056	62.8%	-7.1%	-11.4%	1.2%
DK	4 221	1 571	2 650	37.2%	3 792	1 386	2 405	36.6%	-10.2%	-11.8%	-9.2%
DE	88 439	18 829	69 611	21.3%	85 790	17 532	68 258	20.4%	-3.0%	-6.9%	-1.9%
EE	1 527	970	557	63.5%	1 367	914	453	66.9%	-10.5%	-5.8%	-18.7%
IE	10 307	6 757	3 550	65.6%	9 168	5 596	3 572	61.0%	-11.0%	-17.2%	0.6%
EL	8 968	3 264	5 704	36.4%	7 543	2 559	4 984	33.9%	-15.9%	-21.6%	-12.6%
ES	94 554	49 862	44 692	52.7%	84 596	44 227	40 369	52.3%	-10.5%	-11.3%	-9.7%
FR	84 218	26 933	57 286	32.0%	77 994	23 551	54 443	30.2%	-7.4%	-12.6%	-5.0%
IT	80 122	35 663	44 459	44.5%	74 197	32 634	41 563	44.0%	-7.4%	-8.5%	-6.5%
CY	3 242	2 911	331	89.8%	3 037	2 721	316	89.6%	-6.3%	-6.5%	-4.6%
LV	1 105	652	452	59.1%	905	603	302	66.7%	-18.1%	-7.6%	-33.3%
LT	1 012	517	495	51.1%	809	444	365	54.9%	-20.0%	-14.1%	-26.2%
LU*	605	569	36	94.0%	535	499	36	93.2%	-11.5%	-12.3%	0.5%
HU	6 120	3 138	2 982	51.3%	5 543	2 785	2 758	50.2%	-9.4%	-11.2%	-7.5%
MT	2 814	2 643	171	93.9%	2 404	2 238	166	93.1%	-14.6%	-15.3%	-3.2%
NL	14 484	6 921	7 563	47.8%	13 411	6 097	7 314	45.5%	-7.4%	-11.9%	-3.3%
AT	41 045	31 398	9 647	76.5%	40 296	30 478	9 818	75.6%	-1.8%	-2.9%	1.8%
PL	10 630	3 113	7 518	29.3%	10 082	2 706	7 376	26.8%	-5.2%	-13.1%	-1.9%
PT	14 493	9 675	4 818	66.8%	12 926	8 251	4 674	63.8%	-10.8%	-14.7%	-3.0%
RO	6 601	1 298	5 303	19.7%	5 546	1 026	4 520	18.5%	-16.0%	-21.0%	-14.8%
SI	2 240	1 361	879	60.8%	2 202	1 240	962	56.3%	-1.7%	-8.9%	9.5%
SK	3 291	1 712	1 579	52.0%	2 812	1 265	1 547	45.0%	-14.5%	-26.1%	-2.0%
FI	7 328	2 302	5 026	31.4%	6 877	2 047	4 830	29.8%	-6.2%	-11.1%	-3.9%
SE	10 841	2 166	8 675	20.0%	10 391	2 031	8 361	19.5%	-4.1%	-6.2%	-3.6%
UK	70 949	26 479	44 470	37.3%	65 444	23 442	42 002	35.8%	-7.8%	-11.5%	-5.6%
HR	2 733	1 730	1 003	63.3%	2 517	1 623	894	64.5%	-7.9%	-6.2%	-10.8%
CH	16 844	9 738	7 106	57.8%	15 823	8 994	6 829	56.8%	-6.1%	-7.6%	-3.9%
IS**	508	336	172	66.1%	:	:	:	:	:	:	:
LI	63	62	1	98.4%	61	59	2	97.3%	-3.2%	-4.2%	59.3%
NO	7 617	1 607	6 010	21.1%	7 134	1 455	5 679	20.4%	-6.3%	-9.5%	-5.5%

(*) Luxembourg: Data not available for March and April 2009. 2008-2009 winter season estimation was based on previous year's data.

(**) Iceland: 2009 data not available.

Source: Eurostat (tour_occ_nim)

During the 2008/2009 winter season, net occupancy rates of bed places in the EU countries ranged from 17.0 in Bulgaria to 65.2 in Austria. In all Member States, except for Hungary and Austria, the net occupancy rate dropped in nearly all months, compared to the same month of the previous winter season².

Table 2: Net occupancy rates of bed places in hotels and similar establishments.

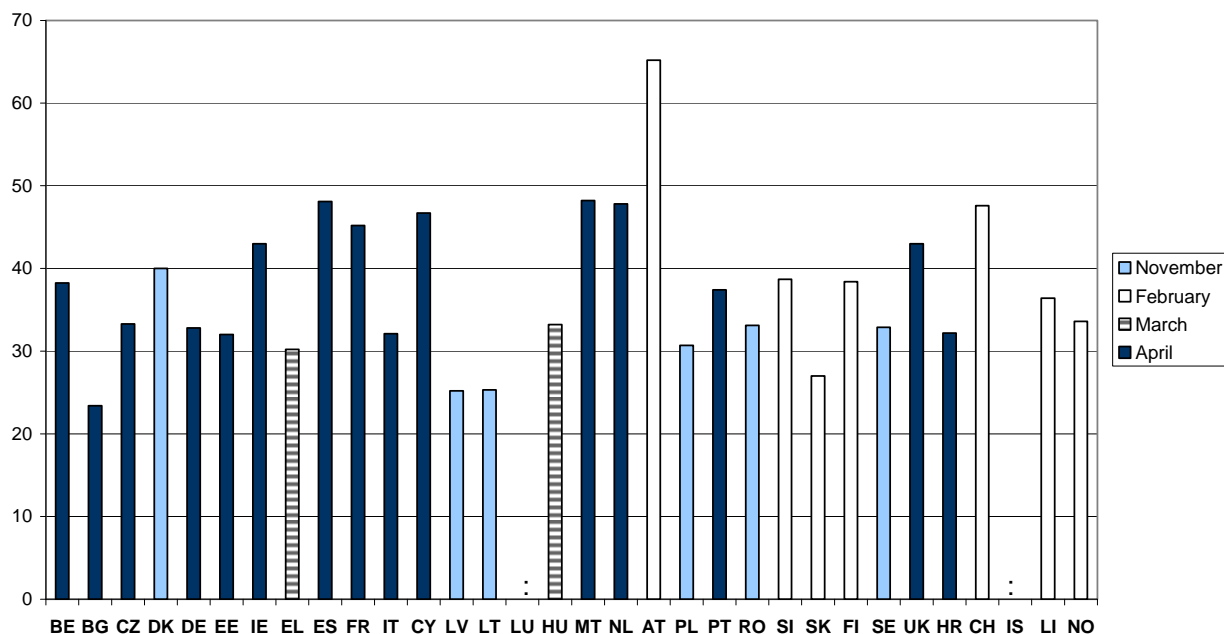
%	Winter season 2007-2008						Winter season 2008-2009						Change in percentage points					
	NOV	DEC	JAN	FEB	MAR	APR	NOV	DEC	JAN	FEB	MAR	APR	NOV	DEC	JAN	FEB	MAR	APR
BE	35.9	33.4	25.9	32.0	33.7	37.9	34.3	33.9	25.2	31.3	30.9	38.2	-1.6	0.5	-0.8	-0.6	-2.9	0.3
BG*	18.3	18.3	20.0	20.0	20.0	29.3	17.6	17.6	17.0	17.0	17.0	23.4	-0.7	-0.7	-3.0	-3.0	-3.0	-5.9
CZ	31.0	29.4	28.2	33.3	34.1	34.3	29.2	27.8	25.7	29.1	28.5	33.3	-1.8	-1.6	-2.5	-4.2	-5.6	-1.0
DK	40.0	29.0	28.0	32.0	34.0	39.0	40.0	27.0	25.0	28.0	30.0	32.0	0.0	-2.0	-3.0	-4.0	-4.0	-7.0
DE	31.6	29.7	26.0	30.5	30.9	34.0	30.7	29.1	24.8	29.4	29.7	32.8	-0.9	-0.6	-1.2	-1.1	-1.2	-1.2
EE	35.0	34.0	26.0	31.0	33.0	36.0	32.0	30.0	25.0	27.0	26.0	32.0	-3.0	-4.0	-1.0	-4.0	-7.0	-4.0
IE	41.0	34.0	29.0	34.0	39.0	40.0	34.0	36.0	28.0	33.0	34.0	43.0	-7.0	2.0	-1.0	-1.0	-5.0	3.0
EL	31.5	31.7	25.4	28.0	34.3	29.0	29.5	28.4	24.3	27.7	30.2	29.8	-2.0	-3.3	-1.1	-0.3	-4.1	0.8
ES	48.3	41.6	40.3	46.9	50.8	49.2	41.6	36.4	34.8	40.3	42.2	48.1	-6.7	-5.2	-5.5	-6.6	-8.6	-1.1
FR	41.9	41.6	36.7	42.5	44.8	45.4	38.5	40.1	35.7	39.6	39.2	45.2	-3.4	-1.5	-1.0	-2.9	-5.6	-0.2
IT	27.4	27.2	27.7	34.1	35.3	31.6	24.3	26.7	27.1	31.5	29.2	32.1	-3.1	-0.5	-0.6	-2.6	-6.1	0.5
CY	42.9	32.0	28.9	36.0	46.1	44.5	42.8	30.1	26.2	33.5	43.4	46.7	-0.1	-1.9	-2.7	-2.5	-2.7	2.2
LV	29.2	27.3	26.3	27.6	24.0	30.6	25.2	22.3	17.8	18.0	17.3	21.2	-4.0	-5.0	-8.5	-9.6	-6.7	-9.4
LT	30.7	28.9	25.6	27.6	27.2	30.3	25.3	22.7	18.9	18.4	18.5	22.3	-5.4	-6.2	-6.7	-9.2	-8.7	-8.0
LU	29.8	25.9	24.2	25.7	25.6	29.6	25.2	22.7	20.1	22.3	:	:	-4.6	-3.2	-4.1	-3.4	:	:
HU	30.2	25.8	19.3	23.0	25.9	24.2	23.7	20.6	20.4	30.8	33.2	28.5	-6.5	-5.2	1.1	7.8	7.3	4.3
MT	46.3	35.0	34.8	42.5	49.5	54.6	39.6	30.2	31.9	39.3	38.7	48.2	-6.7	-4.8	-2.9	-3.2	-10.8	-6.4
NL	44.9	38.1	34.7	40.8	42.3	49.5	41.2	35.4	31.5	35.6	36.5	47.8	-3.7	-2.7	-3.2	-5.2	-5.8	-1.7
AT	25.6	22.4	54.2	67.5	57.5	25.2	24.9	41.8	55.0	65.2	41.2	29.9	-0.7	19.4	0.8	-2.3	-16.3	4.7
PL	33.0	27.9	28.1	32.1	30.6	35.2	30.7	26.1	25.1	28.8	28.4	29.3	-2.3	-1.8	-3.0	-3.3	-2.2	-5.9
PT	31.4	26.4	24.4	31.6	38.5	37.4	28.1	22.8	21.8	26.6	29.6	37.4	-3.3	-3.6	-2.6	-5.0	-8.9	0.0
RO	35.2	26.9	22.0	28.5	25.7	31.0	33.1	23.3	17.9	21.0	20.3	21.3	-2.1	-3.6	-4.1	-7.5	-5.4	-9.7
SI	41.3	36.1	38.8	42.3	40.1	41.1	36.9	33.4	35.4	38.7	34.1	38.3	-4.4	-2.7	-3.4	-3.6	-6.0	-2.8
SK	26.8	23.8	28.6	36.3	28.4	27.3	25.2	21.2	23.3	27.0	21.8	22.3	-1.6	-2.6	-5.3	-9.3	-6.6	-5.0
FI	35.3	35.3	36.3	42.9	41.4	37.1	34.6	33.6	35.0	38.4	37.5	34.0	-0.7	-1.7	-1.3	-4.5	-3.9	-3.1
SE	35.6	29.6	28.2	32.1	31.5	33.1	32.9	27.2	25.3	29.9	30.9	29.6	-2.7	-2.4	-2.9	-2.2	-0.6	-3.5
UK	43.0	38.0	29.0	36.0	39.0	41.0	38.0	33.0	27.0	35.0	36.0	43.0	-5.0	-5.0	-2.0	-1.0	-3.0	2.0
HR	18.4	15.4	13.5	20.3	23.5	28.6	19.8	15.3	17.8	21.4	26.1	32.2	1.4	-0.1	4.3	1.1	2.6	3.6
CH	34.2	37.8	42.1	51.4	47.2	36.7	31.9	37.6	40.1	47.6	41.0	36.1	-2.3	-0.2	-2.0	-3.8	-6.2	-0.6
IS	23.7	17.6	18.1	25.3	24.8	27.6	25.4	19.9	:	:	:	:	1.7	2.3	:	:	:	:
LI	22.8	23.8	29.1	34.8	34.4	24.4	26.4	28.0	31.4	36.4	30.1	26.5	3.6	4.2	2.3	1.6	-4.3	2.1
NO	35.4	27.9	31.5	38.1	34.7	34.0	33.3	25.7	28.4	33.6	33.6	28.5	-2.1	-2.2	-3.1	-4.5	-1.1	-5.5

(*) BG: The figures are based on quarterly data.

Source: Eurostat ([tour_occ_ubnet](#))

² Please note that the month-to-month comparability for March and April might be affected by the fact that for most countries Easter fell in March in the year 2008 and in April in 2009.

Figure 2: Net occupancy rates of bed places in hotels and similar establishments in the peak month, winter season 2008/2009.



Source: Eurostat (tour_occ_ubnet)

Methodology

CONCEPTS AND DEFINITIONS

Net occupancy rate

The net occupancy rate of bed places in one month is obtained by dividing total overnight stays by the product of the bed places on offer and the number of days when the bed places are actually available for use (net of seasonal closures and other temporary closures for decoration, by police order, etc.) for the same group of establishments, multiplying the quotient by 100 to express the result as a percentage.

Hotels and similar establishments

Hotels, apartment hotels, motels, roadside inns, beach hotels and other similar establishments which provide hotel services including more than bed-making and cleaning of the room and sanitary facilities. Similar establishments are other similar types of accommodation which is let per room and has a limited number of hotel-type services, including bed-making and cleaning of rooms and sanitary facilities, on a daily basis.

COUNTRY CODES

EU-27: European Union	IE: Ireland	LT: Lithuania	PT: Portugal	HR: Croatia
BG: Bulgaria	EL: Greece	LU: Luxembourg	RO: Romania	CH: Switzerland
BE: Belgium	ES: Spain	HU: Hungary	SI: Slovenia	IS: Iceland
CZ: Czech Republic	FR: France	MT: Malta	SK: Slovakia	LI: Liechtenstein
DK: Denmark	IT: Italy	NL: Netherlands	FI: Finland	NO: Norway
DE: Germany	CY: Cyprus	AT: Austria	SE: Sweden	
EE: Estonia	LV: Latvia	PL: Poland	UK: United Kingdom	

SYMBOLS

": data unavailable or unreliable

Further information

Data on "Tourism statistics":

<http://epp.eurostat.ec.europa.eu/portal/page/portal/tourism/data/database>

European Statistical Data Support:

Contact details for this support network can be found on our Internet site:

<http://ec.europa.eu/eurostat/>

Manuscript completed on: 30.09.2009

Data extracted on: 23.09.2009

ISSN 1977-0340

Catalogue number: KS-QA-09-040-EN-N

© European Communities, 2009