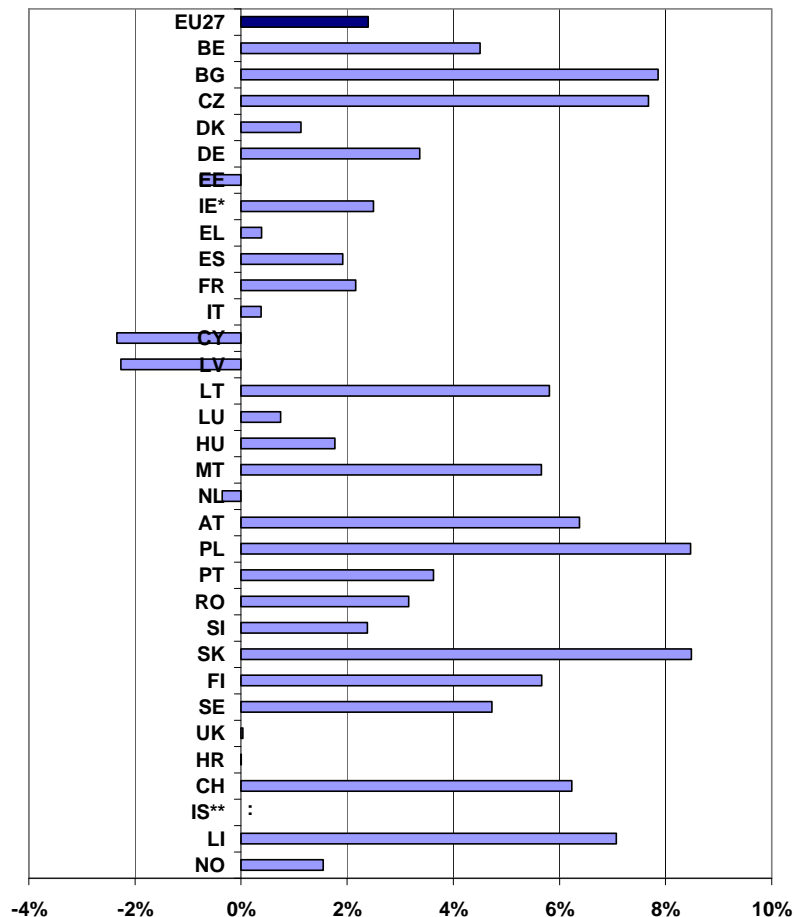


Winter season tourism trends 2007-2008

In terms of nights spent in hotels and similar establishments, tourism in the European Union increased by 13.8 million or 2.4% during the 2007-2008 winter season¹ compared to the same period in 2006-2007.

Figure 1: Percentage change in number of nights spent in hotels and similar establishments, non-residents and residents, November 2007 – April 2008 compared with the same period in 2006-2007.



Source: Eurostat, Tourism Statistics.

(*) Ireland: April 2008 data not available. April 2007 data was used for 2007-2008 winter season estimation.

(**) Iceland: 2008 data not available.

1) The winter season runs from November to April of the following year. For example, the 2007-2008 winter season ran from November 2007 to April 2008

The increase of the number of nights spent in hotels and similar establishments in the EU was equally due to non-residents (+7 million) and residents (+6.9 million).

Table 1: Nights spent in hotels and similar establishments, non-residents and residents, November 2007 – April 2008 compared with November 2006 – April 2007

('000)	Winter season 2006-2007				Winter season 2007-2008				2007-8 / 2006-7 change (in %)		
	Total	of which:		Non-residents as % of Total	Total	of which:		Non-residents as % of Total	Total	of which:	
		Non-residents	Residents			Non-residents	Residents			Non-residents	Residents
EU27	577 438	247 561	329 876	42.9%	591 287	254 525	336 762	43.0%	2.4%	2.8%	2.1%
BE	6 886	4 782	2 104	69.4%	7 196	4 925	2 271	68.4%	4.5%	3.0%	7.9%
BG	3 102	1 349	1 752	43.5%	3 346	1 334	2 012	39.9%	7.9%	-1.2%	14.8%
CZ	11 044	7 341	3 702	66.5%	11 892	7 800	4 092	65.6%	7.7%	6.2%	10.5%
DK	4 204	1 601	2 603	38.1%	4 252	1 588	2 664	37.4%	1.1%	-0.8%	2.3%
DE	85 557	17 948	67 609	21.0%	88 439	18 829	69 611	21.3%	3.4%	4.9%	3.0%
EE	1 534	1 002	533	65.3%	1 523	966	557	63.4%	-0.8%	-3.6%	4.6%
IE*	10 357	6 761	3 596	65.3%	10 615	6 855	3 760	64.6%	2.5%	1.4%	4.6%
EL	8 588	3 209	5 379	37.4%	8 622	3 131	5 491	36.3%	0.4%	-2.5%	2.1%
ES	92 777	48 074	44 703	51.8%	94 554	49 862	44 692	52.7%	1.9%	3.7%	0.0%
FR	82 437	26 299	56 138	31.9%	84 218	26 933	57 286	32.0%	2.2%	2.4%	2.0%
IT	79 781	35 481	44 300	44.5%	80 083	35 650	44 433	44.5%	0.4%	0.5%	0.3%
CY	3 195	2 894	302	90.6%	3 121	2 798	322	89.7%	-2.3%	-3.3%	6.9%
LV	1 130	665	465	58.8%	1 105	652	452	59.1%	-2.3%	-1.9%	-2.8%
LT	955	479	475	50.2%	1 010	517	493	51.2%	5.8%	7.8%	3.8%
LU	587	551	35	94.0%	591	557	35	94.1%	0.7%	0.9%	-2.0%
HU	5 988	3 003	2 985	50.2%	6 094	3 125	2 969	51.3%	1.8%	4.0%	-0.5%
MT	2 663	2 495	168	93.7%	2 814	2 643	171	93.9%	5.7%	5.9%	1.6%
NL	14 536	7 180	7 356	49.4%	14 484	6 921	7 563	47.8%	-0.4%	-3.6%	2.8%
AT	38 584	29 412	9 172	76.2%	41 044	31 397	9 647	76.5%	6.4%	6.7%	5.2%
PL	9 771	3 055	6 716	31.3%	10 599	3 105	7 494	29.3%	8.5%	1.6%	11.6%
PT	13 985	9 196	4 789	65.8%	14 493	9 675	4 818	66.8%	3.6%	5.2%	0.6%
RO	6 398	1 202	5 197	18.8%	6 601	1 298	5 303	19.7%	3.2%	8.0%	2.0%
SI	2 188	1 363	825	62.3%	2 240	1 361	879	60.8%	2.4%	-0.1%	6.6%
SK	3 033	1 652	1 381	54.5%	3 291	1 712	1 579	52.0%	8.5%	3.6%	14.3%
FI	6 939	2 110	4 829	30.4%	7 332	2 302	5 030	31.4%	5.7%	9.1%	4.2%
SE	10 341	1 999	8 342	19.3%	10 830	2 161	8 669	20.0%	4.7%	8.1%	3.9%
UK	70 876	26 456	44 420	37.3%	70 900	26 430	44 470	37.3%	0.0%	-0.1%	0.1%
HR	2 733	1 752	980	64.1%	2 733	1 730	1 003	63.3%	0.0%	-1.3%	2.3%
CH	15 819	9 044	6 775	57.2%	16 805	9 720	7 085	57.8%	6.2%	7.5%	4.6%
IS**	483	332	151	68.7%	:	:	:	:	:	:	:
LI	59	58	1	98.5%	63	62	1	98.4%	7.1%	7.0%	12.8%
NO	7 500	1 614	5 886	21.5%	7 617	1 607	6 010	21.1%	1.6%	-0.4%	2.1%

Source: Eurostat, Tourism statistics

(*) Ireland: April 2008 data not available. April 2007 data was used for 2007-2008 winter season estimation.

(**) Iceland: 2008 data not available.

During the 2007-2008 winter season, net occupancy rates of bed places in European countries ranged from 18.3 in Bulgaria to 70.3 in Austria. Only in three Member States (Austria, Malta and Spain) was the net occupancy rate of bed places in the peak month more than 50%.

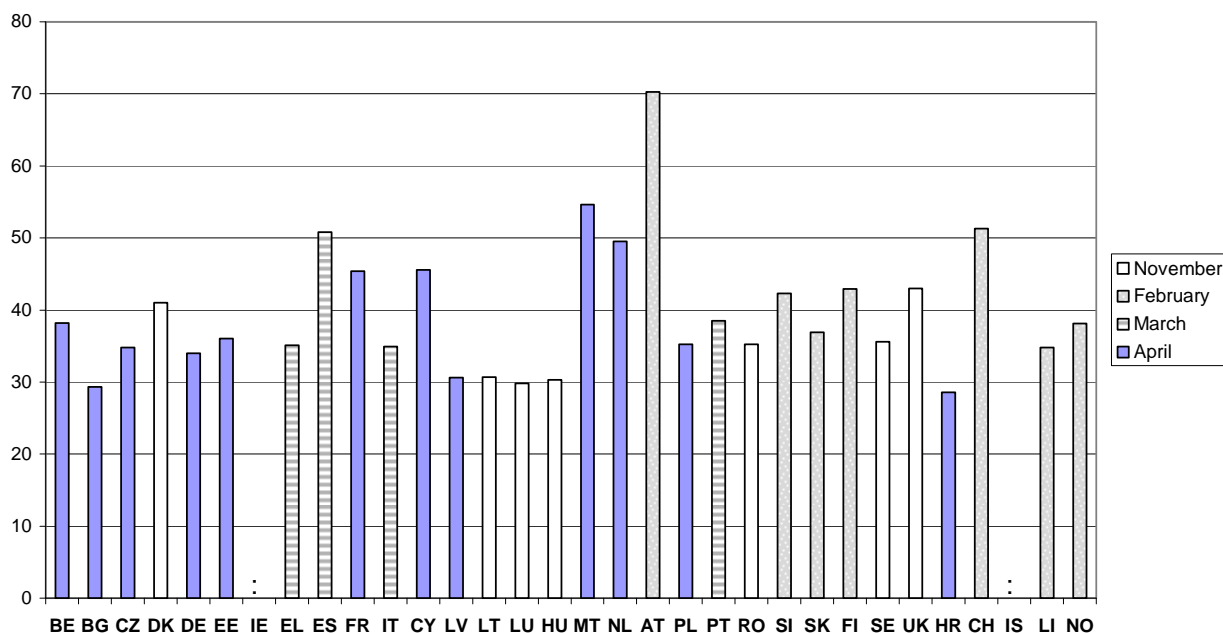
Table 2: Net occupancy rates of bed places in hotels and similar establishments

%	Winter season 2006-2007						Winter season 2007-2008						Change in percentage points					
	NOV	DEC	JAN	FEB	MAR	APR	NOV	DEC	JAN	FEB	MAR	APR	NOV	DEC	JAN	FEB	MAR	APR
BE	32.8	31.6	24.1	30.3	31.8	38.7	35.9	33.4	25.6	31.5	33.4	38.2	3.1	1.8	1.5	1.2	1.6	-0.5
BG*	18.0	18.0	20.8	20.8	20.8	29.0	18.3	18.3	20.0	20.0	20.0	29.3	0.3	0.3	-0.8	-0.8	-0.8	0.3
CZ	29.5	28.1	25.5	32.4	32.6	35.6	31.0	29.4	28.1	33.5	33.7	34.8	1.5	1.3	2.6	1.1	1.1	-0.8
DK	42.0	30.0	28.0	32.0	33.0	38.0	41.0	29.0	27.0	32.0	33.0	38.0	-1.0	-1.0	-1.0	0.0	0.0	0.0
DE	30.4	29.5	25.6	29.9	31.3	34.7	31.6	29.7	26.0	30.5	30.9	34.0	1.2	0.2	0.4	0.6	-0.4	-0.7
EE	39.0	36.0	30.0	34.0	35.0	43.0	35.0	34.0	26.0	31.0	33.0	36.0	-4.0	-2.0	-4.0	-3.0	-2.0	-7.0
IE	39.0	38.0	30.0	38.0	40.0	46.0	41.0	34.0	30.0	36.0	44.0	:	2.0	-4.0	0.0	-2.0	4.0	:
EL	30.8	31.1	25.3	29.5	32.4	31.6	31.5	31.7	25.9	28.7	35.1	29.9	0.7	0.6	0.6	-0.8	2.7	-1.7
ES	46.5	42.2	40.6	46.1	50.4	55.8	48.3	41.6	40.3	46.9	50.8	49.2	1.8	-0.6	-0.3	0.8	0.4	-6.6
FR	39.8	39.9	36.1	40.6	43.4	49.2	41.9	41.6	36.7	42.5	44.8	45.4	2.1	1.7	0.6	1.9	1.4	-3.8
IT	26.2	27.1	27.4	31.6	32.6	36.0	27.4	27.2	28.4	34.1	34.9	30.9	1.2	0.1	1.0	2.5	2.3	-5.1
CY	41.0	29.9	27.6	34.5	38.1	45.2	42.9	32.0	29.2	37.1	44.2	45.6	1.9	2.1	1.6	2.6	6.1	0.4
LV	33.3	31.5	27.4	30.2	30.7	30.2	29.2	27.3	26.3	27.6	24.0	30.6	-4.1	-4.2	-1.1	-2.6	-6.7	0.4
LT	25.9	26.1	24.4	24.9	27.1	32.9	30.7	28.9	25.6	27.6	27.2	30.3	4.8	2.8	1.2	2.7	0.1	-2.6
LU	30.5	24.3	24.7	26.8	30.1	30.9	29.8	25.9	23.8	25.4	25.1	27.9	-0.7	1.6	-0.9	-1.4	-5.0	-3.0
HU	27.1	24.4	21.7	25.1	30.0	34.3	30.2	25.8	21.9	26.3	29.9	30.3	3.1	1.4	0.2	1.2	-0.1	-4.0
MT	41.3	33.5	33.1	42.7	49.8	56.8	46.3	35.0	34.8	42.5	49.5	54.6	5.0	1.5	1.7	-0.2	-0.3	-2.2
NL	43.9	38.4	34.9	40.6	42.7	52.8	44.9	38.1	34.7	40.8	42.3	49.5	1.0	-0.3	-0.2	0.2	-0.4	-3.3
AT	23.1	36.2	51.8	64.7	48.1	33.6	25.6	22.4	54.5	70.3	58.4	25.2	2.5	-13.8	2.7	5.6	10.3	-8.4
PL	31.7	27.3	28.3	31.3	33.1	34.4	33.0	27.9	28.1	32.1	30.6	35.2	1.3	0.6	-0.2	0.8	-2.5	0.8
PT	30.4	27.1	23.6	30.5	41.4	42.5	31.4	26.4	24.4	31.6	38.5	37.4	1.0	-0.7	0.8	1.1	-2.9	-5.1
RO	34.6	24.4	22.6	27.7	30.6	32.0	35.2	26.9	22.0	28.5	25.7	31.0	0.6	2.5	-0.6	0.8	-4.9	-1.0
SI	39.2	36.3	39.4	44.1	42.2	47.2	41.3	36.1	38.8	42.3	40.1	41.1	2.1	-0.2	-0.6	-1.8	-2.1	-6.1
SK	28.4	24.9	29.9	39.4	33.3	29.5	26.8	23.8	28.6	36.3	28.4	27.3	-1.6	-1.1	-1.3	-3.1	-4.9	-2.2
FI	35.2	33.9	34.5	39.8	42.5	35.0	35.3	35.3	36.2	42.9	41.3	37.0	0.1	1.4	1.7	3.1	-1.2	2.0
SE	34.7	28.8	27.1	31.9	34.4	31.0	35.6	29.6	28.2	31.8	31.4	33.0	0.9	0.8	1.1	-0.1	-3.0	2.0
UK	41.0	41.0	33.0	39.0	41.0	47.0	43.0	38.0	29.0	36.0	39.0	41.0	2.0	-3.0	-4.0	-3.0	-2.0	-6.0
HR	18.7	16.3	14.8	19.4	19.0	33.9	18.4	15.4	13.5	20.3	23.5	28.6	-0.3	-0.9	-1.3	0.9	4.5	-5.3
CH	31.4	34.9	39.1	48.6	43.6	38.0	34.2	37.8	41.9	51.3	47.2	36.3	2.8	2.9	2.8	2.7	3.6	-1.7
IS	25.5	18.3	18.0	24.7	29.1	29.7	23.7	17.6	:	:	:	:	-1.8	-0.7	:	:	:	:
LI	20.4	18.7	27.1	33.3	32.3	22.2	22.8	23.8	29.1	34.8	34.4	24.4	2.4	5.1	2.0	1.5	2.1	2.2
NO	35.1	28.5	31.6	38.6	40.0	32.7	35.4	27.9	31.5	38.1	34.7	34.0	0.3	-0.6	-0.1	-0.5	-5.3	1.3

(*) BG: The figures are based on quarterly data.

Source: Eurostat, Tourism statistics

Figure 2: Net occupancy rates of bed places in hotels and similar establishments in the peak month, winter season 2007-2008.



Source: Eurostat, Tourism statistics

Methodology

CONCEPTS AND DEFINITIONS

Net occupancy rate

The net occupancy rate of bed places in one month is obtained by dividing total overnight stays by the product of the bed places on offer and the number of days when the bed places are actually available for use (net of seasonal closures and other temporary closures for decoration, by police order, etc.) for the same group of establishments, multiplying the quotient by 100 to express the result as a percentage.

Hotels and similar establishments

Hotels, apartment hotels, motels, roadside inns, beach hotels and other similar establishments which provide hotel services including more than bed-making and cleaning of the room and sanitary facilities. Similar establishments are other similar types of accommodation which is let per room and has a limited number of hotel-type services, including bed-making and cleaning of rooms and sanitary facilities, on a daily basis.

Country codes

EU-27: European Union	IE: Ireland	LT: Lithuania	PT: Portugal	HR: Croatia
BG: Bulgaria	EL: Greece	LU: Luxembourg	RO: Romania	
BE: Belgium	ES: Spain	HU: Hungary	SI: Slovenia	CH: Switzerland
CZ: Czech Republic	FR: France	MT: Malta	SK: Slovakia	IS: Iceland
DK: Denmark	IT: Italy	NL: Netherlands	FI: Finland	LI: Liechtenstein
DE: Germany	CY: Cyprus	AT: Austria	SE: Sweden	NO: Norway
EE: Estonia	LV: Latvia	PL: Poland	UK: United Kingdom	

Symbols

": " data unavailable or unreliable

Further information

Tourism statistics:

[EUROSTAT Website/Home page/Industry, trade and services/Population and social conditions/Data](http://ec.europa.eu/eurostat/)

European Statistical Data Support:

Contact details for this support network can be found on our Internet site:

<http://ec.europa.eu/eurostat/>

Manuscript completed on: 09.10.2008

Data extracted on: 03.10.2008

ISSN 1977-0340

Catalogue number: KS-QA-08-038-EN-N

© European Communities, 2008