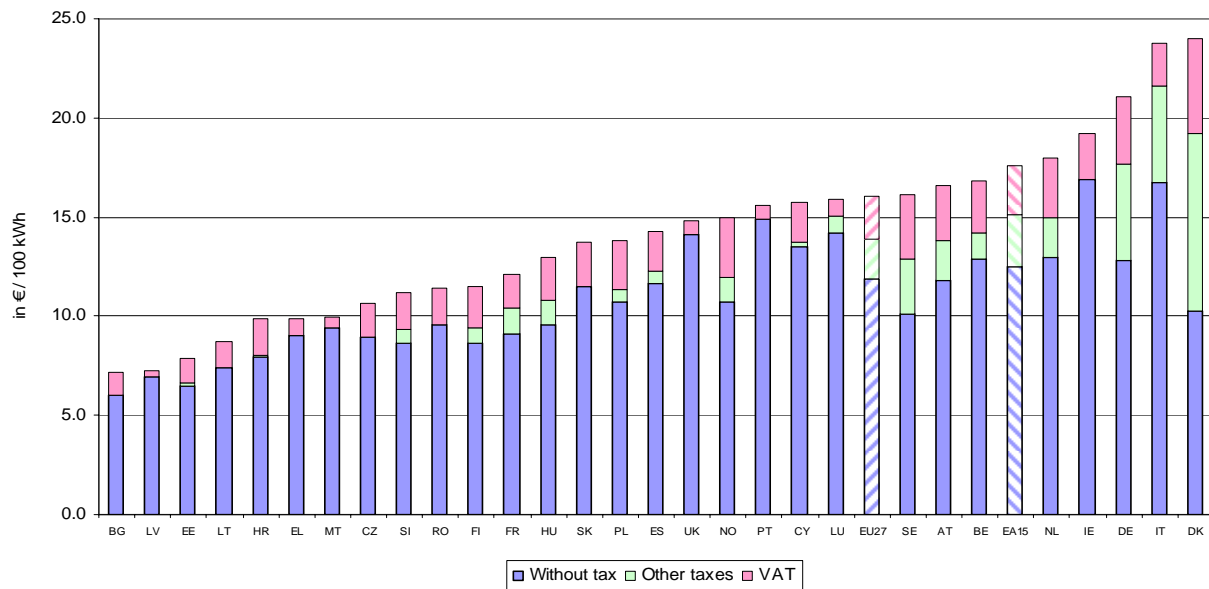


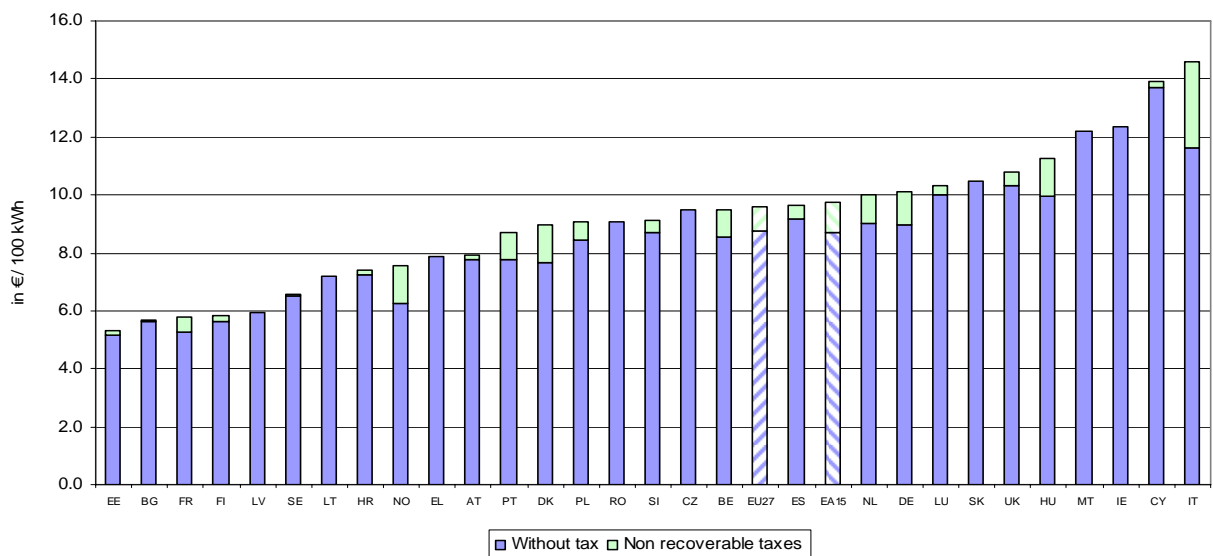
## Electricity prices for second semester 2007

**Graph 1 : Electricity prices for household consumers \***



\* 'Household consumers' refer to consumer band Dc (annual consumption between 2500 and 5000 kWh)

**Graph 2 : Electricity prices for industrial consumers \*\***



\*\* 'Industrial consumers' refer to consumer band Ic (annual consumption between 500 and 2000 MWh)

**Table 1 : Electricity prices for household\* and industrial\*\* consumers (in € per 100 kWh)**

	EU27	EA15	BE	BG	CZ	DK	DE	EE	IE	EL	ES	FR	IT	CY	LV	LT
Households	16.03	17.57	16.83	7.21	10.63	24.01	21.05	7.86	19.18	9.84	14.26	12.13	23.77	15.72	7.29	8.70
Industry	9.59	9.74	9.49	5.68	9.46	8.95	10.13	5.30	12.35	7.89	9.62	5.80	14.58	13.91	5.94	7.20

	LU	HU	MT	NL	AT	PL	PT	RO	SI	SK	FI	SE	UK	HR	NO
Households	15.91	12.96	9.93	18.00	16.62	13.80	15.59	11.41	11.16	13.70	11.49	16.13	14.81	9.84	14.98
Industry	10.31	11.28	12.21	10.00	7.90	9.05	8.68	9.08	9.10	10.48	5.86	6.56	10.78	7.38	7.56

**Table 2 : Electricity prices for household\* and industrial\*\* consumers (in national currency per 100 kWh for non-euroarea countries)**

	BG	CZ	DK	EE	LV	LT	HU	PL	RO	SK	SE	UK	HR	NO
Households	14.10	291	179	123	5.10	30.03	3271	51.39	38.12	459	150	10.28	72.00	118
Industry	11.10	259	66.70	83.00	4.16	24.87	2847	33.70	30.34	351	60.90	7.48	54.00	59.70

**Table 3 : Share of taxes in the prices paid by end-users****Share of taxes for household\* consumers :**

	Basic price	Other taxes (excl. V.A.T)	V.A.T	All Taxes
	in € per 100 kWh			in %
PT	14.86	0.00	0.73	4.7
UK	14.11	0.00	0.70	4.7
LV	6.94	0.00	0.35	4.8
MT	9.45	0.00	0.48	4.8
EL	9.00	0.00	0.84	8.5
LU	14.21	0.80	0.90	10.7
IE	16.90	0.00	2.28	11.9
CY	13.48	0.22	2.02	14.2
LT	7.37	0.00	1.33	15.3
CZ	8.95	0.00	1.68	15.8
SK	11.52	0.00	2.18	15.9
BG	6.03	0.00	1.18	16.4
RO	9.54	0.00	1.87	16.4
EE	6.52	0.13	1.21	17.0
ES	11.64	0.59	2.03	18.4
HR	7.93	0.13	1.78	19.4
PL	10.69	0.62	2.49	22.5
SI	8.61	0.69	1.86	22.8
BE	12.86	1.37	2.60	23.6
FI	8.68	0.74	2.07	24.5
FR	9.14	1.25	1.74	24.6
HU	9.57	1.23	2.16	26.2
NL	13.00	2.00	3.00	27.8
NO	10.69	1.30	2.99	28.6
AT	11.78	2.07	2.77	29.1
IT	16.74	4.87	2.16	29.6
SE	10.13	2.77	3.23	37.2
DE	12.79	4.85	3.41	39.2
DK	10.27	8.94	4.80	57.2

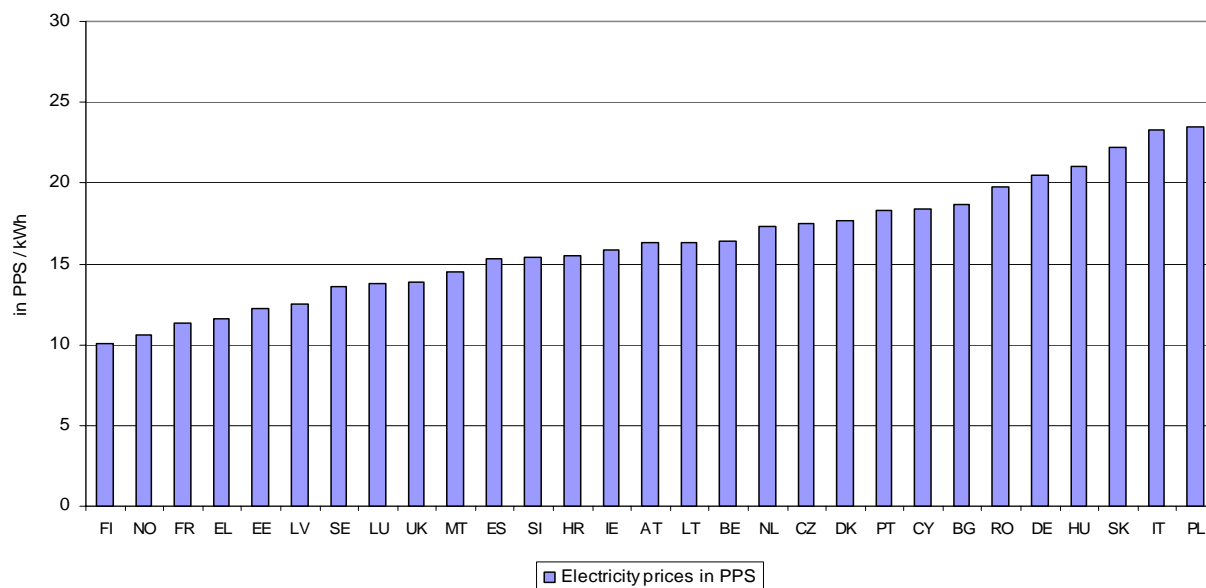
**Share of taxes for industrial\*\* consumers :**

	Basic price	Non recoverable taxes	Non recoverable taxes
	in € per 100 kWh		in %
LV	5.94	0.00	0.0
LT	7.20	0.00	0.0
EL	7.89	0.00	0.0
RO	9.08	0.00	0.0
CZ	9.46	0.00	0.0
SK	10.48	0.00	0.0
MT	12.21	0.00	0.0
IE	12.35	0.00	0.0
SE	6.51	0.05	0.8
BG	5.62	0.06	1.1
CY	13.69	0.22	1.6
HR	7.24	0.14	1.9
AT	7.74	0.16	2.0
EE	5.18	0.12	2.3
LU	9.99	0.32	3.1
FI	5.63	0.23	3.9
UK	10.33	0.45	4.2
SI	8.72	0.38	4.2
ES	9.17	0.45	4.7
PL	8.43	0.62	6.9
FR	5.24	0.56	9.7
NL	9.00	1.00	10.0
PT	7.79	0.89	10.3
BE	8.53	0.96	11.3
HU	9.97	1.31	11.6
DE	8.94	1.19	11.7
DK	7.65	1.30	14.5
NO	6.28	1.28	16.9
IT	11.60	2.98	20.4

\* 'Household consumers' refer to consumer band Dc (annual consumption between 2500 and 5000 kWh) and the prices include all taxes.

\*\* 'Industrial consumers' refer to consumer band Ic (annual consumption between 500 and 2000 MWh) and the prices exclude recoverable taxes and V.A.T

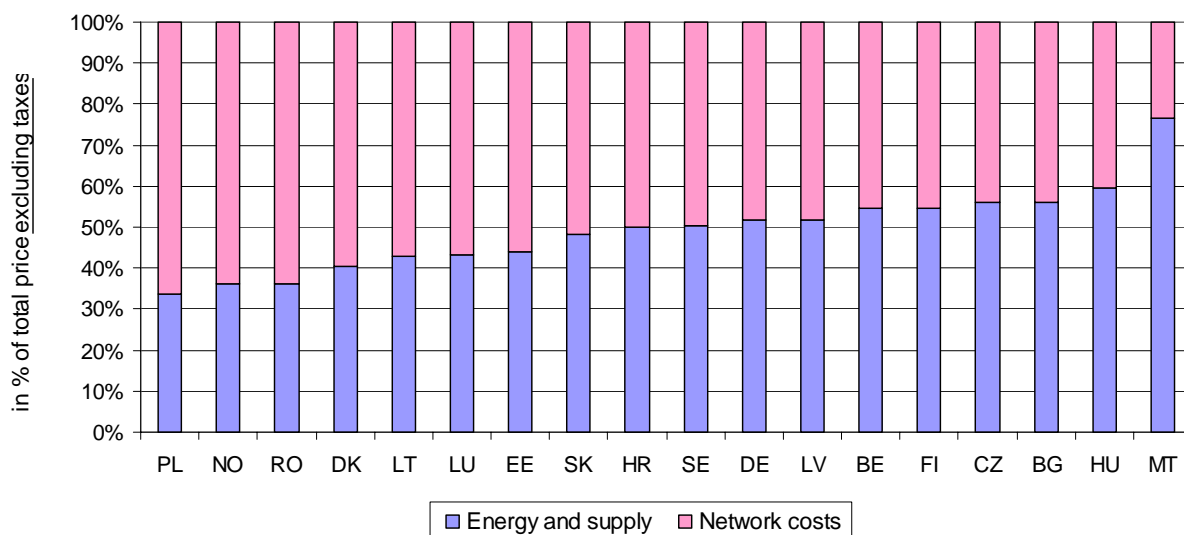
**Graph 3 : Electricity prices in purchasing power standards (PPS) for household\* consumers (all taxes included)**



**Table 4 : Electricity prices in purchasing power standards (PPS) for household\* consumers (all taxes included)**

	BE	BG	CZ	DK	DE	EE	IE	EL	ES	FR	IT	CY	LV	LT	LU
Households	16.39	18.67	17.47	17.71	20.45	12.22	15.84	11.62	15.33	11.31	23.25	18.40	12.49	16.32	13.75
	HU	MT	NL	AT	PL	PT	RO	SI	SK	FI	SE	UK	HR	NO	
Households	21.03	14.46	17.30	16.27	23.50	18.34	19.78	15.42	22.17	10.07	13.64	13.85	15.50	10.58	

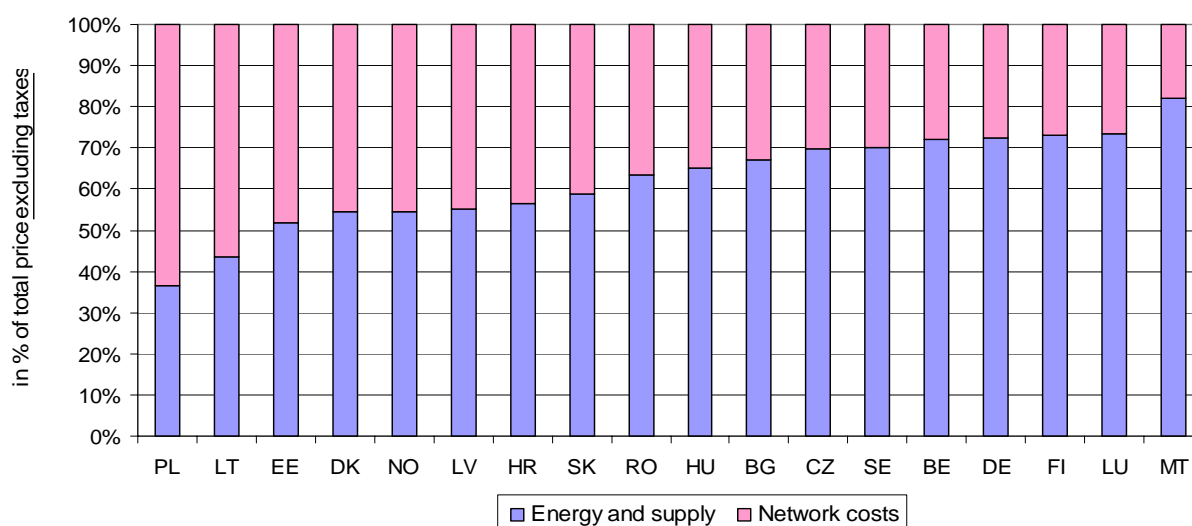
**Graph 4 : Share of energy and supply and network costs in household\* prices excluding taxes**



\* 'Household consumers' refer to consumer band Dc (annual consumption between 2500 and 5000 kWh)

**Table 5 : Disaggregated prices for household\* consumers**

	Composition of the household prices in € per 100 kWh				Share in price without tax (%)	
	TOTAL PRICE	Energy and supply	Network costs	Taxes and levies	Energy and supply	Network costs
PL	13.80	3.59	7.10	3.10	33.6	66.4
NO	14.98	3.86	6.82	4.29	36.1	63.9
RO	11.41	3.46	6.08	1.87	36.3	63.7
DK	24.01	4.16	6.16	13.69	40.3	59.7
LT	8.70	3.13	4.16	1.41	43.0	57.0
LU	15.91	6.15	8.06	1.70	43.3	56.7
EE	7.86	2.88	3.64	1.34	44.1	55.9
SK	13.70	5.55	5.97	2.18	48.2	51.8
HR	9.84	3.96	3.96	1.91	50.0	50.0
SE	16.13	5.11	5.03	5.99	50.4	49.6
DE	21.05	6.61	6.18	8.26	51.7	48.3
LV	7.29	3.59	3.34	0.35	51.8	48.2
BE	16.83	7.01	5.85	3.97	54.5	45.5
FI	11.49	4.75	3.92	2.82	54.8	45.2
CZ	10.63	5.00	3.95	1.68	55.9	44.1
BG	7.21	3.37	2.66	1.18	55.9	44.1
HU	12.96	5.69	3.87	3.40	59.5	40.5
MT	9.93	7.23	2.20	0.50	76.7	23.3

**Graph 5 : Share of energy and supply and network costs in industrial\*\* prices excluding taxes****Table 6 : Disaggregated prices for industrial\*\* consumers**

	Composition of the industrial prices in € per 100 kWh				Share in price without tax (%)	
	TOTAL PRICE	Energy and supply	Network costs	Taxes and levies	Energy and supply	Network costs
PL	9.05	3.08	5.35	0.62	36.6	63.4
LT	7.20	3.13	4.07	0.00	43.4	56.6
EE	5.30	2.68	2.49	0.13	51.9	48.1
DK	8.95	4.15	3.48	1.33	54.4	45.6
NO	7.56	3.43	2.85	1.28	54.6	45.4
LV	5.94	3.28	2.66	0.00	55.2	44.8
HR	7.38	4.10	3.14	0.14	56.6	43.4
SK	10.48	6.15	4.33	0.00	58.7	41.3
RO	9.08	5.75	3.33	0.00	63.3	36.7
HU	11.28	6.49	3.48	1.31	65.1	34.9
BG	5.68	3.78	1.84	0.05	67.3	32.7
CZ	9.46	6.61	2.85	0.00	69.9	30.1
SE	6.56	4.56	1.95	0.05	70.0	30.0
BE	9.49	6.13	2.39	0.97	71.9	28.1
DE	10.13	6.48	2.46	1.19	72.5	27.5
FI	5.86	4.12	1.51	0.23	73.2	26.8
LU	10.31	7.33	2.66	0.32	73.4	26.6
MT	12.21	10.01	2.20	0.00	82.0	18.0

\* 'Household consumers' refer to consumer band Dc (annual consumption between 2500 and 5000 kWh)

\*\* 'Industrial consumers' refer to consumer band Ic (annual consumption between 500 and 2000 MWh)

## Comments

---

Price data for the Netherlands, Greece, Spain (households) and Austria (households) are provisional. Disaggregated prices for energy and supply costs and for network costs for the Czech Republic and for Malta are provisional.

---

## Methodology

---

### ***A new methodology for the collection of electricity prices***

*The legal basis for the collection of industrial gas and electricity prices is defined by Council Directive 90/377/EEC. The collection of prices for household consumers is done on a voluntary agreement with the Member States.*

*Due to the liberalisation of the electricity market, the methodology that defines the collection of the electricity prices became outdated.*

*In June 2007, the Commission adopted a proposal from Directorate-General Transport and Energy and Eurostat to change the methodology for these price collections.*

*The main changes that were introduced for the collection of price information for the second semester of 2007 include:*

- *Prices are to be reported as national figures.*
- *Prices are to be reported as an average of the last 6 months.*
- *Typical standard consumers are replaced by consumption bands.*
- *Disaggregated data on energy and supply costs and on network costs will be reported for electricity prices.*

## Further information

---

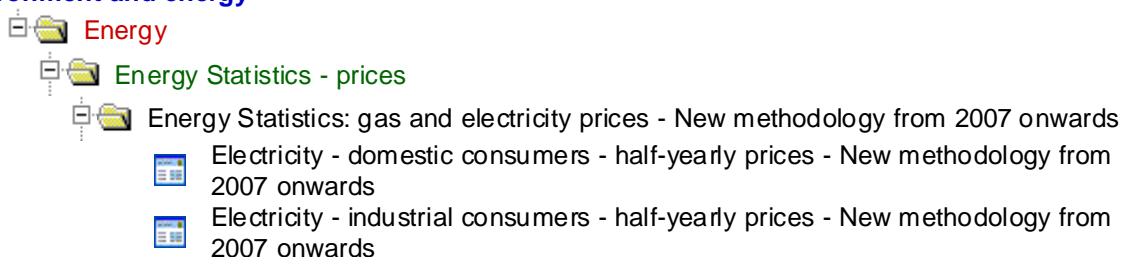
### **European Statistical Data Support:**

Contact details for this support network can be found on our Internet site:

<http://ec.europa.eu/eurostat/>

**Data:** [EUROSTAT Website/Home page/Environment and energy/Data](#)

### **Environment and energy**



---

Manuscript completed on: 16.06.2008

Data extracted on: 25.04.2008

ISSN 1977-0340

Catalogue number: KS-QA-08-023-EN-N

© European Communities, 2008