

Winter season tourism trends 2006-2007

Author: Chryssanthi DIMITRAKOPOULOU

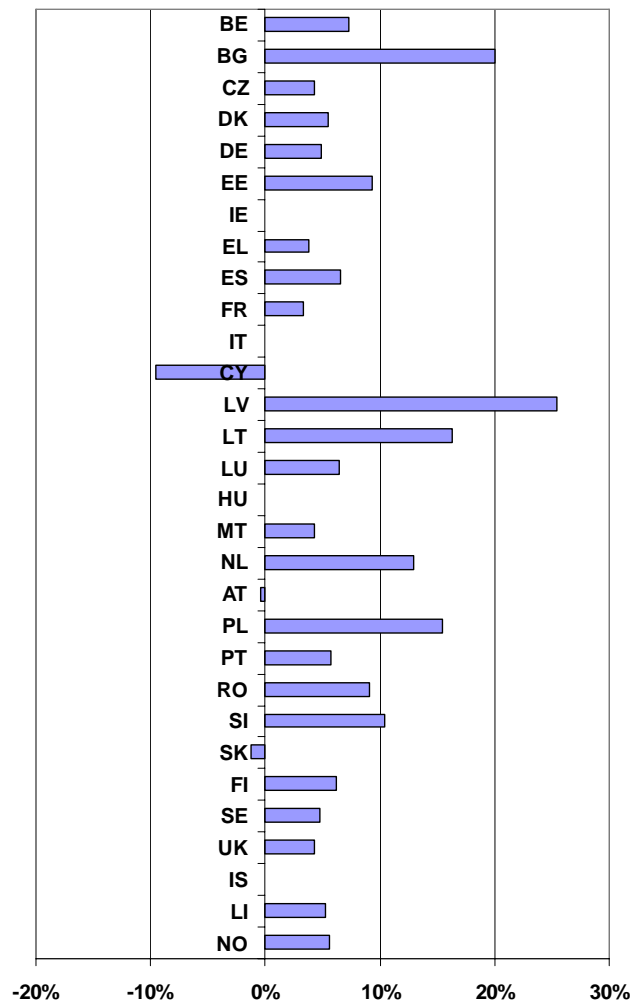
INDUSTRY, TRADE AND SERVICES

20/2007

POPULATION AND SOCIAL CONDITIONS

In terms of nights spent in hotels and similar establishments, tourism in most European Union and EFTA countries increased during the 2006-2007 winter season¹ compared to the same period in 2005-2006.

Figure 1: Percentage change in number of nights spent in hotels and similar establishments, non-residents and residents, November 2006 – April 2007 compared with the same period in 2005-2006.



Data not available for IE, IT, HU and IS

Source: Eurostat, Tourism Statistics.

¹ The winter season runs from November to April of the following year. For example, the 2006-2007 winter season ran from November 2006 to April 2007.

Residents and non-residents contributed equally to the increase of nights spent in hotels and similar establishments in the European Union.

Table 1: Nights spent in hotels and similar establishments - non-residents and residents, November 2006 – April 2007 compared with November 2005 – April 2006

('000)	November 2005 - April 2006				November 2006 - April 2007				2006-7 / 2005-6 change (in %)		
	Total	of which:		Non-residents as % of Total	Total	of which:		Non-residents as % of Total	Total	of which:	
		Non-residents	Residents			Non-residents	Residents			Non-residents	Residents
BE	6 496	4 642	1 854	71.5%	6 969	4 833	2 135	69.4%	7.3%	4.1%	15.2%
BG	2 586	1 072	1 514	41.4%	3 104	1 351	1 752	43.5%	20.0%	26.0%	15.7%
CZ	10 613	6 944	3 669	65.4%	11 061	7 320	3 741	66.2%	4.2%	5.4%	1.9%
DK	3 887	1 579	2 308	40.6%	4 100	1 577	2 522	38.5%	5.5%	-0.1%	9.3%
DE	81 568	16 478	65 090	20.2%	85 557	17 948	67 609	21.0%	4.9%	8.9%	3.9%
EE	1 404	980	424	69.8%	1 534	1 002	533	65.3%	9.3%	2.3%	25.5%
IE	9 287	6 171	3 116	66.4%	:	:	:	:	:	:	:
EL	7 822	2 848	4 974	36.4%	8 118	3 015	5 104	37.1%	3.8%	5.8%	2.6%
ES	87 049	44 783	42 266	51.4%	92 777	48 074	44 703	51.8%	6.6%	7.3%	5.8%
FR	79 774	25 654	54 120	32.2%	82 412	26 272	56 140	31.9%	3.3%	2.4%	3.7%
IT	80 075	35 334	44 741	44.1%	:	:	:	:	:	:	:
CY	3 455	3 170	285	91.8%	3 126	2 833	293	90.6%	-9.5%	-10.6%	3.0%
LV	901	558	343	61.9%	1 130	665	465	58.8%	25.4%	19.1%	35.6%
LT	819	423	396	51.7%	952	477	475	50.1%	16.3%	12.8%	20.0%
LU	548	510	38	93.1%	583	548	35	94.0%	6.4%	7.4%	-6.9%
HU	5 671	3 007	2 664	53.0%	:	:	:	:	:	:	:
MT	2 537	2 394	142	94.4%	2 646	2 478	168	93.6%	4.3%	3.5%	18.1%
NL	12 868	6 664	6 205	51.8%	14 536	7 180	7 356	49.4%	13.0%	7.8%	18.5%
AT	38 735	29 812	8 923	77.0%	38 584	29 412	9 172	76.2%	-0.4%	-1.3%	2.8%
PL	8 436	2 612	5 824	31.0%	9 744	3 041	6 703	31.2%	15.5%	16.4%	15.1%
PT	13 227	8 750	4 477	66.2%	13 985	9 196	4 789	65.8%	5.7%	5.1%	7.0%
RO	5 863	1 077	4 786	18.4%	6 398	1 202	5 197	18.8%	9.1%	11.5%	8.6%
SI	1 982	1 213	769	61.2%	2 188	1 363	825	62.3%	10.4%	12.4%	7.2%
SK	3 071	1 693	1 378	55.1%	3 033	1 652	1 381	54.5%	-1.2%	-2.4%	0.2%
FI	6 539	1 833	4 707	28.0%	6 943	2 110	4 833	30.4%	6.2%	15.1%	2.7%
SE	9 881	1 921	7 960	19.4%	10 347	1 988	8 359	19.2%	4.7%	3.4%	5.0%
UK	67 842	24 722	43 120	36.4%	70 712	26 292	44 420	37.2%	4.2%	6.4%	3.0%
IS	403	264	139	65.6%	:	:	:	:	:	:	:
LI	56	55	1	98.3%	59	58	1	98.5%	5.2%	5.4%	-5.2%
NO	7 102	1 528	5 574	21.5%	7 500	1 614	5 886	21.5%	5.6%	5.6%	5.6%

Data not available for IE, IT, HU and IS

Source: Eurostat, Tourism Statistics

During the 2006-2007 winter season, end-of-year holidays did not influence the occupancy rates in hotels and similar establishments in the EU.

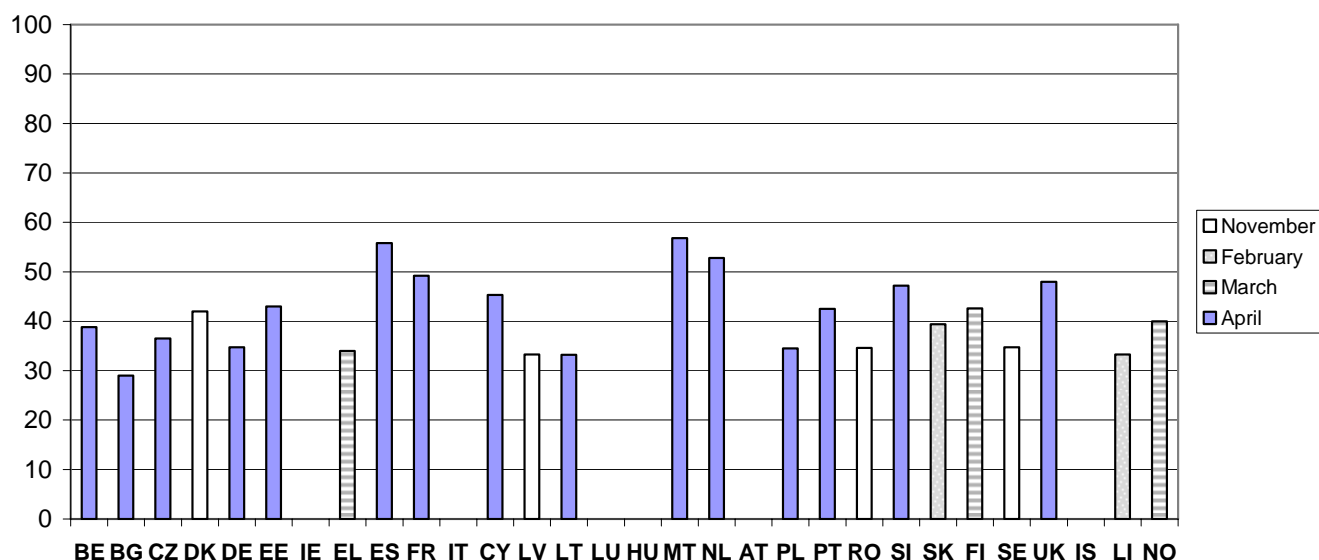
Table 2: Net occupancy rates of bed-places in hotels and similar establishments

%	Winter season 2005-2006						Winter season 2006-2007						Change in percentage points					
	NOV	DEC	JAN	FEB	MAR	APR	NOV	DEC	JAN	FEB	MAR	APR	NOV	DEC	JAN	FEB	MAR	APR
BE	32.7	30.7	22.9	29.1	29.5	37.1	32.8	31.6	24.6	30.0	32.5	38.8	0.1	0.9	1.7	0.9	3.0	1.7
BG*	19.1	19.1	21.0	21.0	21.0	30.6	18.0	18.0	20.8	20.8	20.8	29.0	-1.1	-1.1	-0.2	-0.2	-0.2	-1.6
CZ	29.6	28.0	28.0	32.8	32.0	36.3	29.5	28.1	25.6	32.8	32.9	36.5	-0.1	0.1	-2.4	0.0	0.9	0.2
DK	40.0	29.0	27.0	30.0	34.0	37.0	42.0	30.0	28.0	31.0	36.0	38.0	2.0	1.0	1.0	1.0	2.0	1.0
DE	29.7	28.2	25.4	29.0	29.5	33.1	30.4	29.5	25.6	29.9	31.3	34.7	0.7	1.3	0.2	0.9	1.8	1.6
EE	38.0	36.0	28.0	32.0	38.0	42.0	39.0	36.0	30.0	34.0	35.0	43.0	1.0	0.0	2.0	2.0	-3.0	1.0
IE	40.0	35.0	31.0	39.0	40.0	49.0	39.0	38.0	:	:	:	:	-1.0	3.0	:	:	:	:
EL	28.3	26.9	25.2	28.9	32.5	32.6	30.8	31.1	25.9	30.0	34.0	30.1	2.5	4.2	0.7	1.1	1.5	-2.5
ES	45.3	39.4	40.3	46.3	49.0	56.2	46.5	42.2	40.6	46.1	50.4	55.8	1.2	2.8	0.3	-0.2	1.4	-0.4
FR	38.5	38.7	35.4	40.4	40.8	48.0	39.8	39.9	36.1	40.6	43.4	49.2	1.3	1.2	0.7	0.2	2.6	1.2
IT	24.4	25.7	:	:	:	:	:	:	:	:	:	:	:	:	:	:	:	:
CY	44.9	27.7	29.4	32.9	41.7	47.4	41.0	29.9	27.6	34.5	38.1	45.3	-3.9	2.2	-1.8	1.6	-3.6	-2.1
LV	31.6	29.3	23.5	24.0	25.2	30.6	33.3	31.5	27.4	30.2	30.7	30.2	1.7	2.2	3.9	6.2	5.5	-0.4
LT	23.2	21.4	19.6	22.1	25.3	30.3	25.9	26.1	24.4	24.9	27.1	33.2	2.7	4.7	4.8	2.8	1.8	2.9
LU	26.2	22.5	23.1	25.5	26.7	28.8	30.5	24.3	:	:	:	:	4.3	1.8	:	:	:	:
HU	28.1	23.1	20.7	22.2	26.5	32.1	26.3	22.2	18.8	23.1	29.6	:	-1.8	-0.9	-1.9	0.9	3.1	:
MT	40.0	30.5	30.8	37.3	40.3	51.2	41.3	33.5	33.1	42.7	49.8	56.8	1.3	3.0	2.3	5.4	9.5	5.6
NL	40.4	35.3	31.0	35.3	38.2	50.8	43.9	38.4	34.9	40.6	42.7	52.8	3.5	3.1	3.9	5.3	4.5	2.0
AT	24.1	35.7	53.2	64.2	50.6	33.7	23.1	36.2	:	:	:	:	-1.0	0.5	:	:	:	:
PL	30.5	25.6	26.1	28.6	30.7	32.4	31.7	27.3	28.3	31.3	33.1	34.5	1.2	1.7	2.2	2.7	2.4	2.1
PT	28.3	24.4	22.8	29.3	33.8	44.4	30.4	27.1	23.6	30.5	41.4	42.5	2.1	2.7	0.8	1.2	7.6	-1.9
RO	33.2	25.0	21.2	28.4	29.1	26.5	34.6	24.4	22.6	27.7	30.6	32.0	1.4	-0.6	1.4	-0.7	1.5	5.5
SI	37.9	37.1	39.0	42.2	42.2	49.2	39.2	36.3	39.4	44.1	42.2	47.2	1.3	-0.8	0.4	1.9	0.0	-2.0
SK	28.3	27.3	34.5	40.0	33.7	29.4	28.4	24.9	29.9	39.4	33.3	29.5	0.1	-2.4	-4.6	-0.6	-0.4	0.1
FI	32.8	31.3	32.1	38.1	40.0	35.2	35.2	33.9	34.5	39.9	42.6	34.9	2.4	2.6	2.4	1.8	2.6	-0.3
SE	33.1	27.8	26.4	30.7	32.9	32.0	34.7	28.8	26.8	31.8	34.4	30.9	1.6	1.0	0.4	1.1	1.5	-1.1
UK	40.0	36.0	30.0	36.0	37.0	47.0	41.0	41.0	33.0	39.0	41.0	48.0	1.0	5.0	3.0	3.0	4.0	1.0
IS	22.4	16.2	15.6	22.8	25.8	28.3	25.5	18.3	:	:	:	:	3.1	2.1	:	:	:	:
LI	19.8	18.7	29.2	32.4	29.5	20.5	20.4	18.7	27.1	33.3	32.3	22.2	0.6	0.0	-2.1	0.9	2.8	1.7
NO	32.8	27.1	30.4	37.5	38.5	33.0	35.1	28.5	31.6	38.6	40.0	32.7	2.3	1.4	1.2	1.1	1.5	-0.3

(*) BG: The figures are based on quarterly data.

Source: Eurostat, Tourism Statistics

Figure 2: Net occupancy rates of bed places in hotels and similar establishments in the peak month, winter season 2006-2007.



Data not available for IE, IT, LU, HU, AT and IS

Source: Eurostat, Tourism Statistics

METHODOLOGICAL NOTES

CONCEPTS AND DEFINITIONS

Net occupancy rate

The net occupancy rate of bed-places in one month is obtained by dividing total overnight stays by the product of the bed-places on offer and the number of days when the bed-places are actually available for use (net of seasonal closures and other temporary closures for decoration, by police order, etc.) for the same group of establishments, multiplying the quotient by 100 to express the result as a percentage.

Hotels and similar establishments

Hotels, apartment hotels, motels, roadside inns, beach hotels and other similar establishments which provide hotel services including more than bed-making and cleaning of the room and sanitary facilities. Similar establishments are other similar types of accommodation which is let per room and has a limited number of hotel-type services, including bed-making and cleaning of rooms and sanitary facilities, on a daily basis.

Country codes

EU-27: European Union
 BG: Bulgaria
 BE: Belgium
 CZ: Czech Republic
 DK: Denmark
 DE: Germany
 EE: Estonia

IE: Ireland
 EL: Greece
 ES: Spain
 FR: France
 IT: Italy
 CY: Cyprus
 LV: Latvia

LT: Lithuania
 LU: Luxembourg
 HU: Hungary
 MT: Malta
 NL: Netherlands
 AT: Austria
 PL: Poland

PT: Portugal
 RO: Romania
 SI: Slovenia
 SK: Slovakia
 FI: Finland
 SE: Sweden
 UK: United Kingdom

IS: Iceland
 LI: Liechtenstein
 NO: Norway

Symbols

": " data unavailable or unreliable

FURTHER INFORMATION

European Statistical Data Support

Contact details for this support network can be found on the Eurostat Internet site:
<http://ec.europa.eu/eurostat> → Services: Help/Data support

Tourism statistics:

[EUROSTAT Website/Home page/Industry, trade and services/Population and social conditions/Data](http://eurostat.ec.europa.eu/industry-trade-services/population-social-conditions/data)