

EU-27 consumption of natural gas fell by 1.9% and production by 5.4% in 2006

Figure 1: Gross inland consumption in EU-27 in million toe (gross calorific value)

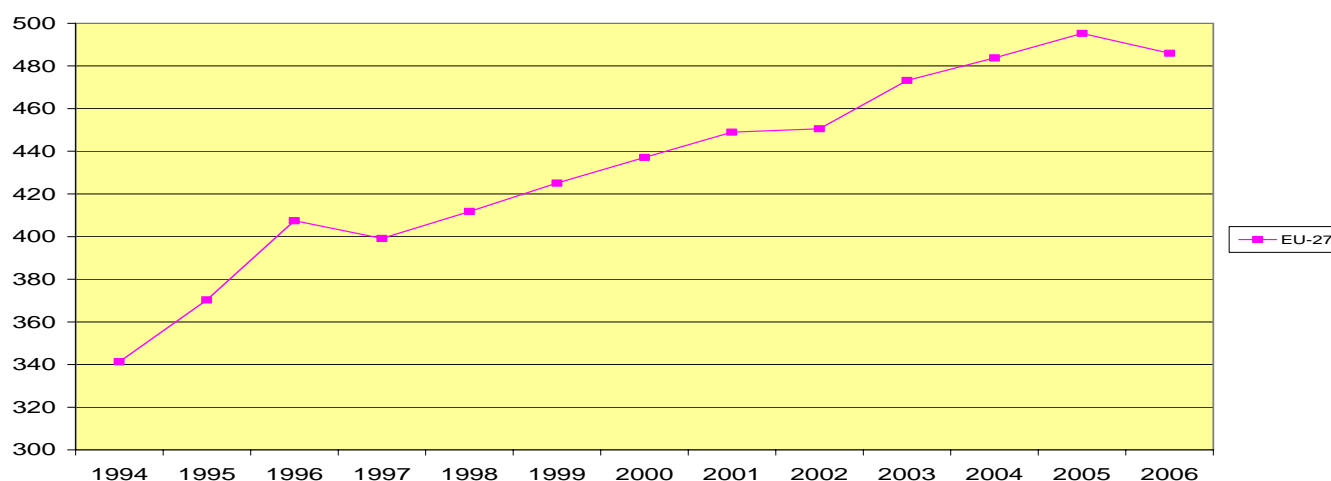
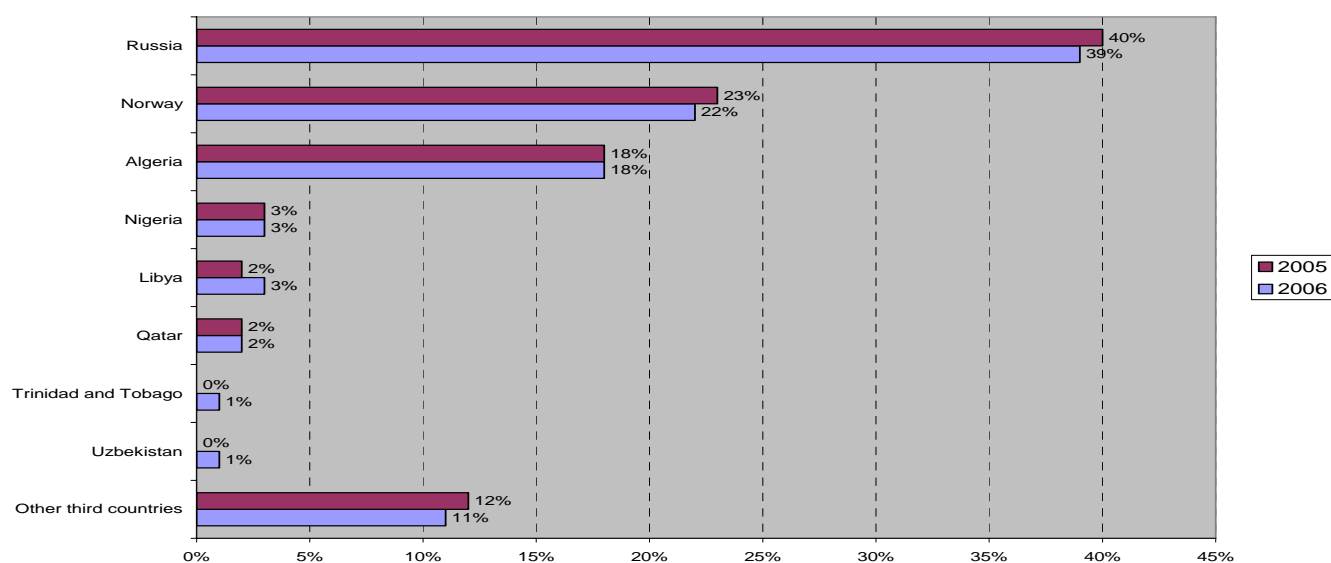


Figure 2: EU-27 imports of natural gas: % of extra-EU imports by country of origin



	EU-27	EA-13	BE	BG	CZ	DK	DE	EE	IE	EL	ES	FR	IT	CY	LV	LT	LU	HU	MT	NL	AT	PL	PT	RO	SI	SK	FI	SE	UK	
1. Primary production	2005	211.1	92.9	0.0	0.5	0.2	15.8	0.0	0.5	0.0	0.2	1.2	10.9	0.0	0.0	0.0	0.0	2.5	0.0	62.7	1.5	4.3	0.0	12.0	0.0	0.1	0.0	0.0	88.2	
	2006	199.7	90.8	0.0	0.5	0.2	15.6	0.0	0.5	0.0	0.1	1.1	9.9	0.0	0.0	0.0	0.0	2.7	0.0	61.8	1.7	4.3	0.0	11.5	0.0	0.1	0.0	0.0	79.3	
	2006/2005%	-5.4	-2.2	0.0	-3.4	3.5	-1.2	-1.2	0.0	-1.1	37.0	-8.7	-9.1	0.0	0.0	0.0	0.0	8.0	0.0	-1.4	11.1	-0.7	0.0	-4.2	0.0	-17.0	0.0	0.0	-10.1	
2. Total imports	2005	348.7	285.8	14.4	2.7	8.5	0.0	81.7	0.8	3.3	2.6	33.9	66.7	0.0	1.6	2.8	1.3	10.9	0.0	18.3	9.0	9.5	4.3	4.8	1.0	6.1	4.0	0.8	14.4	
	2006	386.9	296.6	14.9	2.8	8.8	0.0	84.1	1.0	3.9	3.0	34.8	70.4	0.0	1.7	2.8	1.4	10.6	0.0	20.1	9.7	9.9	4.1	5.1	1.0	5.9	4.3	0.9	20.8	
	2006/2005%	5.2	3.8	3.3	5.5	4.2	0.0	2.9	30.2	19.1	16.7	2.7	-0.8	0.0	6.6	-1.6	8.1	-3.1	0.0	9.7	7.6	4.8	-5.9	7.8	-2.8	-3.4	7.7	4.6	44.1	
3. Resources ⁽¹⁾	2005	559.8	378.7	14.4	3.2	8.6	10.5	97.5	0.8	3.8	2.6	46.5	77.7	0.0	1.6	2.8	1.3	13.4	0.0	81.0	10.5	13.8	4.3	16.8	1.0	6.2	4.0	0.8	102.7	
	2006	566.6	387.4	14.9	3.3	9.0	10.4	99.7	1.0	4.4	3.1	46.1	80.4	0.0	1.7	2.8	1.4	13.3	0.0	81.9	11.4	14.2	4.1	16.7	1.0	6.0	4.3	0.9	100.1	
	2006/2005%	1.2	2.3	3.3	4.2	4.2	-0.6	2.2	30.2	16.4	16.8	2.4	-1.0	3.5	6.6	-1.6	8.1	-1.0	0.0	1.1	8.1	3.1	-5.9	-0.8	-2.8	-3.7	7.7	4.6	-2.5	
4. Stock change ⁽²⁾	2005	1.0	0.8	-0.1	0.0	0.0	1.0	0.0	0.0	0.0	-0.3	-0.3	1.0	0.0	-0.1	0.0	0.0	-0.1	0.0	0.0	-0.5	-0.2	0.2	0.2	0.0	0.1	0.0	0.0	0.2	
	2006	-8.5	-6.4	0.0	-0.1	-0.5	-1.1	0.0	0.0	0.0	-0.2	-1.1	-3.2	0.0	-0.1	0.0	0.0	-0.4	0.0	0.0	-0.7	-0.5	0.0	0.2	0.0	0.0	0.0	0.0	0.0	-0.6
	2006/2005%	-65.5	-51.7	0.0	0.0	0.1	5.6	8.7	0.0	0.0	0.0	0.0	0.3	0.0	0.0	0.0	0.0	0.0	0.0	41.7	1.0	0.0	0.0	0.0	0.0	0.3	0.0	0.0	0.0	7.9
5. Total exports	2005	72.2	56.5	0.0	0.0	0.1	5.2	10.2	0.0	0.0	0.0	0.0	0.3	0.0	0.0	0.0	0.0	0.0	0.0	43.7	2.2	0.0	0.0	0.0	0.0	0.5	0.0	0.0	9.9	
	2006	10.1	9.3	0.0	0.0	43.5	-6.4	18.2	0.0	0.0	0.0	0.0	7.3	0.0	0.0	0.0	0.0	0.0	0.0	4.8	119.2	0.2	0.0	0.0	0.0	53.9	0.0	0.0	25.2	
	2006/2005%	-495.3	327.8	14.3	3.1	8.6	4.9	89.8	0.8	3.8	2.6	46.3	78.4	0.0	1.5	2.8	1.3	13.4	0.0	39.3	9.0	13.5	4.2	17.0	1.0	6.0	4.0	0.8	95.0	
6. Gross inland consumption ⁽³⁾	2005	486.0	324.5	14.9	3.2	8.4	5.0	88.3	1.0	4.4	3.1	34.6	45.0	0.0	1.6	2.8	1.4	12.9	0.0	38.3	8.4	13.7	4.0	16.9	1.0	5.5	4.3	0.9	89.7	
	2006	-1.9	-1.0	4.2	3.0	-2.5	2.7	-1.7	30.2	15.3	16.8	2.5	-2.8	0.0	3.6	-1.6	8.1	-3.5	0.0	-2.8	-6.7	1.1	-3.1	-0.8	-2.8	-7.8	7.7	4.6	-5.6	
	2006/2005%	-0.4	-0.3	28.1	9.4	-30.0	5.4	-1.9	30.2	37.5	54.0	7.2	-6.4	0.0	22.5	-57.1	28.6	-27.1	27.1	-7.3	-8.1	13.0	-7.5	-4.7	-15.4	-14.1	18.3	5.1	-6.2	
7. Energy Dependency ⁽⁴⁾	2005	57.2	71.4	100.7	86.3	96.0	-113.5	81.3	100.0	86.6	99.2	98.0	84.7	0.0	105.6	100.0	100.0	81.8	0.0	-59.3	88.0	69.7	103.7	28.0	100.0	96.5	100.0	100.0	6.9	
	2006	60.6	74.0	99.8	88.3	104.4	-103.5	83.6	100.0	89.6	99.1	100.5	91.2	0.0	108.7	100.0	100.0	82.2	0.0	-61.5	88.0	72.2	100.6	30.4	100.0	98.1	100.0	100.0	12.2	

(1) 1+2

(2) + Decrease in stocks

- Increase in stocks

(3) 1 + 2 + 4 - 5

(4) (2 - 5) / 6

Table 1: Provisional natural gas balance sheet (January-December 2006) in million tonnes of oil equivalent (GCV)

Figure 3: Gross inland consumption in million toe (GCV)

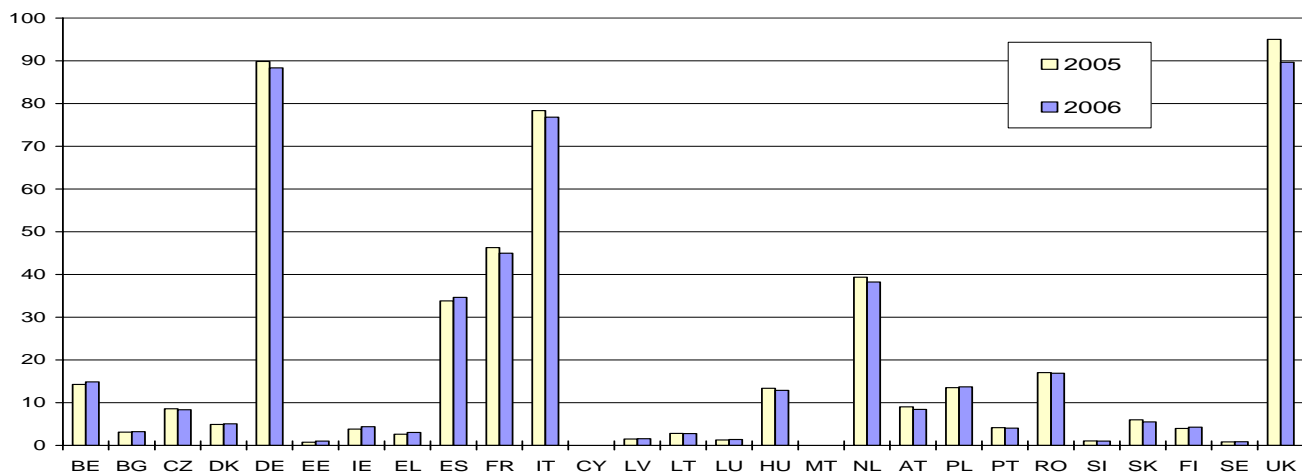


Figure 4: Primary production in million toe (GCV)

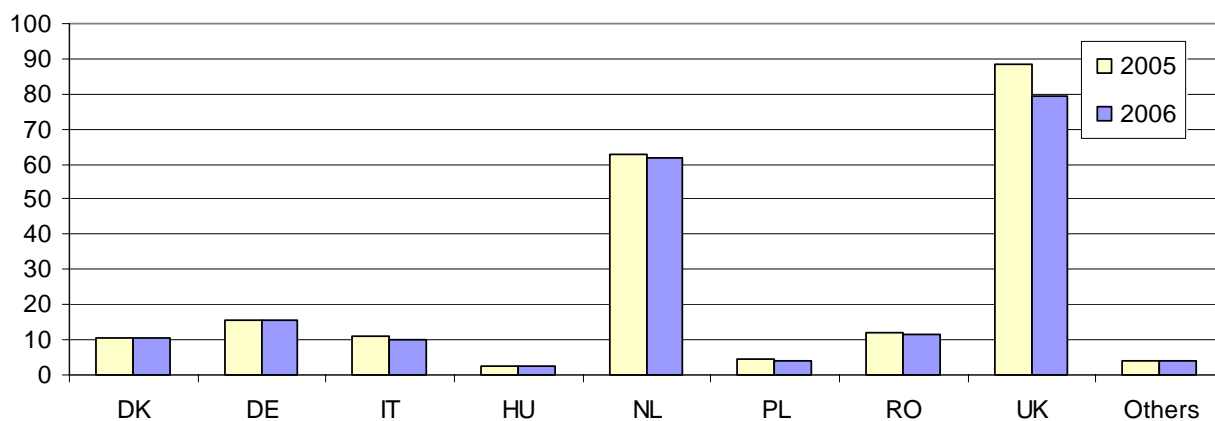
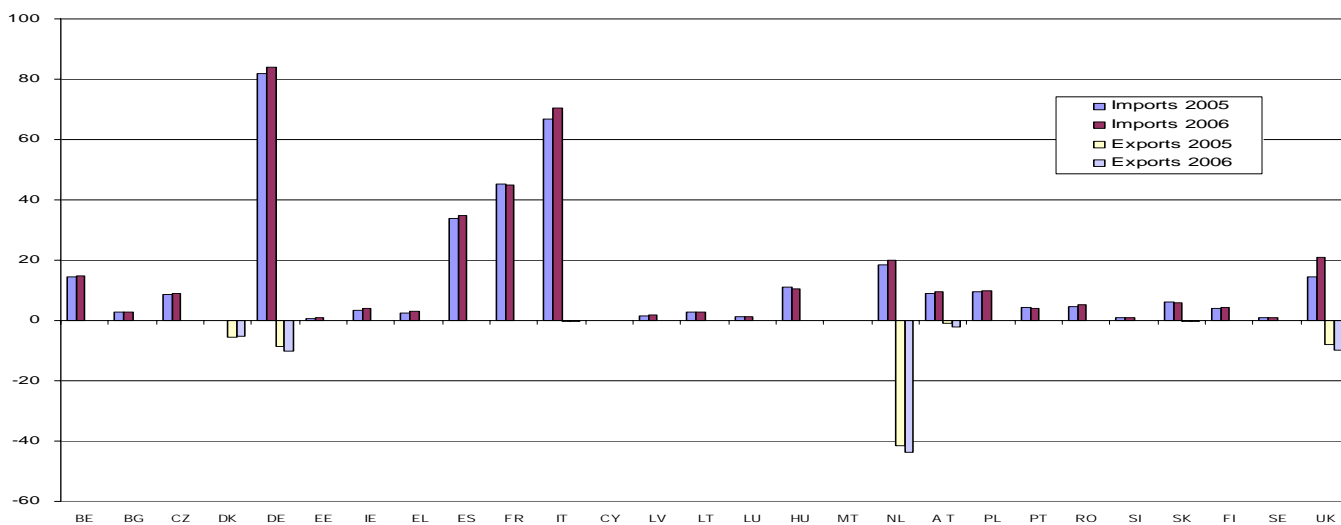


Figure 5: Total imports and exports in million toe (GCV) (+ : imports ; - : exports)



METHODOLOGICAL NOTES

All data used in this publication correspond to cumulative monthly figures and may differ from the annual data. Exceptionally, annual values for EU-27 for the period 1994-2004 have been used in Figure 1.

Negative dependency rate indicates a net exporter country. Positive values over 100% indicate stocks build-up during the reference period.

FURTHER INFORMATION

Data source: [EUROSTAT Website/Homepage/Environment and energy/Data](#)

European Statistical Data Support

Contact details for this support network can be found on the Eurostat Internet site:
<http://ec.europa.eu/eurostat> → Services: Help/Data support