

# Summer tourism trends in 2006

Author: Chryssanthi DIMITRAKOPOULOU

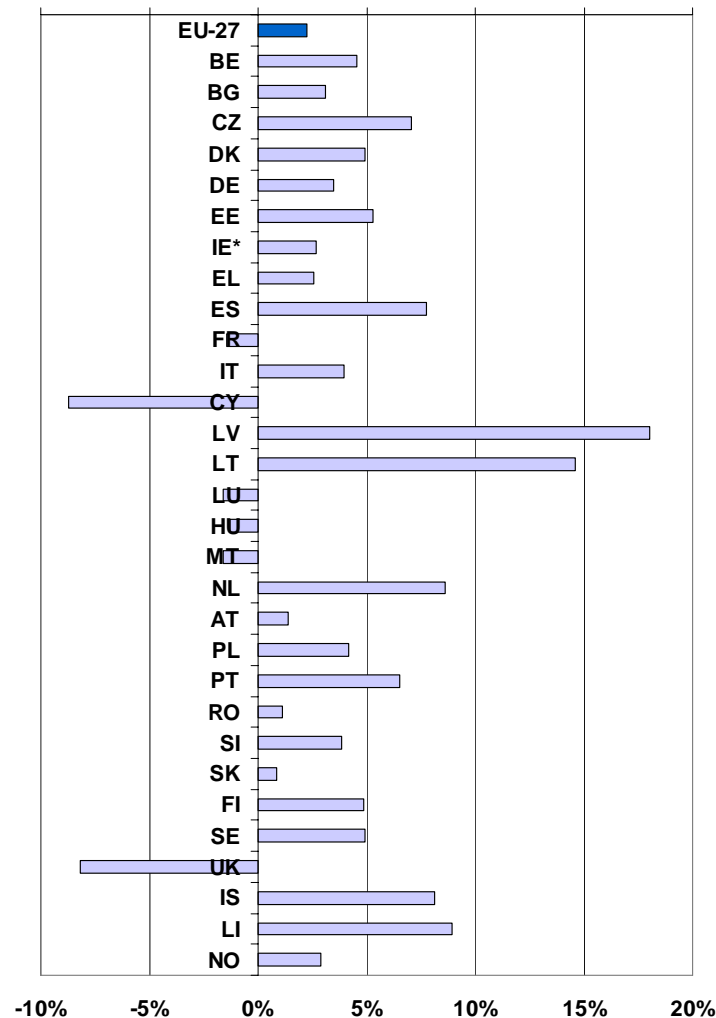
INDUSTRY, TRADE AND SERVICES

8/2007

POPULATION AND SOCIAL CONDITIONS

The number of nights spent in hotels and similar establishments in EU-27 increased by 15.7 million or 2.3% during the summer season<sup>1</sup> of 2006 compared with the same period in 2005.

Figure 1: Percentage change in number of nights spent in hotels and similar establishments, non-residents and residents, June-September 2006 compared with the same period in 2005



(\*) IE : Data comes from the demand side survey and might for this reason be not comparable.

Source: Eurostat, Tourism Statistics.

<sup>1</sup> Summer season comprises June to September of the same year.

## The increase of nights spent in hotels and similar establishments in the EU was almost exclusively due to non-residents (+15.4 million).

**Table 1: Nights spent in hotels and similar establishments - non-residents and residents, June-September 2006 compared with the same period in 2005**

('000)	June - September 2005				June - September 2006				2006/2005 change (in %)		
	Total	of which:		Non-residents as % of Total	Total	of which:		Non-residents as % of Total	Total	of which:	
		Non-residents	Residents			Non-residents	Residents			Non-residents	Residents
<b>EU-27</b>	692 563	324 333	368 230	46.8%	708 258	339 731	368 527	48.0%	2.3%	4.7%	0.1%
<b>BE</b>	5 664	3 852	1 812	68.0%	5 923	3 924	1 999	66.2%	4.6%	1.9%	10.3%
<b>BG</b>	11 236	9 360	1 876	83.3%	11 587	9 536	2 050	82.3%	3.1%	1.9%	9.3%
<b>CZ</b>	10 080	6 604	3 476	65.5%	10 794	6 982	3 811	64.7%	7.1%	5.7%	9.6%
<b>DK</b>	4 590	2 437	2 154	53.1%	4 816	2 439	2 377	50.6%	4.9%	0.1%	10.4%
<b>DE</b>	82 774	16 009	66 765	19.3%	85 666	18 135	67 532	21.2%	3.5%	13.3%	1.1%
<b>EE</b>	1 575	1 297	278	82.4%	1 658	1 284	375	77.4%	5.3%	-1.0%	34.8%
<b>IE*</b>	12 372	8 510	3 862	68.8%	12 701	9 122	3 579	71.8%	2.7%	7.2%	-7.3%
<b>EL</b>	37 021	29 603	7 418	80.0%	37 971	30 830	7 141	81.2%	2.6%	4.1%	-3.7%
<b>ES</b>	120 263	70 479	49 784	58.6%	129 611	76 657	52 954	59.1%	7.8%	8.8%	6.4%
<b>FR</b>	84 127	33 745	50 382	40.1%	82 893	32 129	50 764	38.8%	-1.5%	-4.8%	0.8%
<b>IT</b>	126 341	48 155	78 186	38.1%	131 364	52 095	79 269	39.7%	4.0%	8.2%	1.4%
<b>CY</b>	8 074	7 421	653	91.9%	7 371	6 715	656	91.1%	-8.7%	-9.5%	0.4%
<b>LV</b>	1 019	726	293	71.2%	1 203	850	353	70.7%	18.0%	17.1%	20.3%
<b>LT</b>	969	696	273	71.8%	1 111	749	362	67.4%	14.6%	7.6%	32.5%
<b>LU</b>	545	511	34	93.8%	536	508	28	94.8%	-1.6%	-0.5%	-17.7%
<b>HU</b>	7 213	4 184	3 029	58.0%	7 120	3 856	3 263	54.2%	-1.3%	-7.8%	7.7%
<b>MT</b>	3 478	3 393	85	97.5%	3 422	3 305	117	96.6%	-1.6%	-2.6%	36.6%
<b>NL</b>	11 733	5 981	5 752	51.0%	12 741	6 460	6 281	50.7%	8.6%	8.0%	9.2%
<b>AT</b>	29 120	21 296	7 824	73.1%	29 531	21 405	8 126	72.5%	1.4%	0.5%	3.9%
<b>PL</b>	8 582	3 746	4 835	43.7%	8 940	3 566	5 374	39.9%	4.2%	-4.8%	11.1%
<b>PT</b>	16 385	10 927	5 458	66.7%	17 451	11 874	5 578	68.0%	6.5%	8.7%	2.2%
<b>RO</b>	9 108	1 781	7 326	19.6%	9 211	1 525	7 687	16.6%	1.1%	-14.4%	4.9%
<b>SI</b>	2 171	1 545	626	71.2%	2 254	1 575	679	69.9%	3.8%	2.0%	8.4%
<b>SK</b>	2 811	1 566	1 245	55.7%	2 834	1 638	1 196	57.8%	0.8%	4.6%	-3.9%
<b>FI</b>	5 868	1 675	4 193	28.5%	6 154	1 833	4 321	29.8%	4.9%	9.5%	3.1%
<b>SE</b>	9 564	2 735	6 829	28.6%	10 035	2 799	7 236	27.9%	4.9%	2.3%	6.0%
<b>UK</b>	79 880	26 100	53 780	32.7%	73 360	27 940	45 420	38.1%	-8.2%	7.0%	-15.5%
<b>IS</b>	978	801	176	82.0%	1 057	873	184	82.6%	8.1%	8.9%	4.4%
<b>LI</b>	41	41	1	98.3%	45	43	1	96.8%	8.9%	7.2%	104.7%
<b>NO</b>	7 782	2 746	5 036	35.3%	8 008	2 823	5 185	35.2%	2.9%	2.8%	3.0%

(\*IE : Data comes from the demand side survey and might for this reason be not comparable.

Source: Eurostat, Tourism Statistics

**In three Member States, namely Cyprus, Greece and Malta, the net occupancy rate of bed-places in hotels and similar establishments in the peak month was more than 80%, while in ten other Member States it was less than 50%**

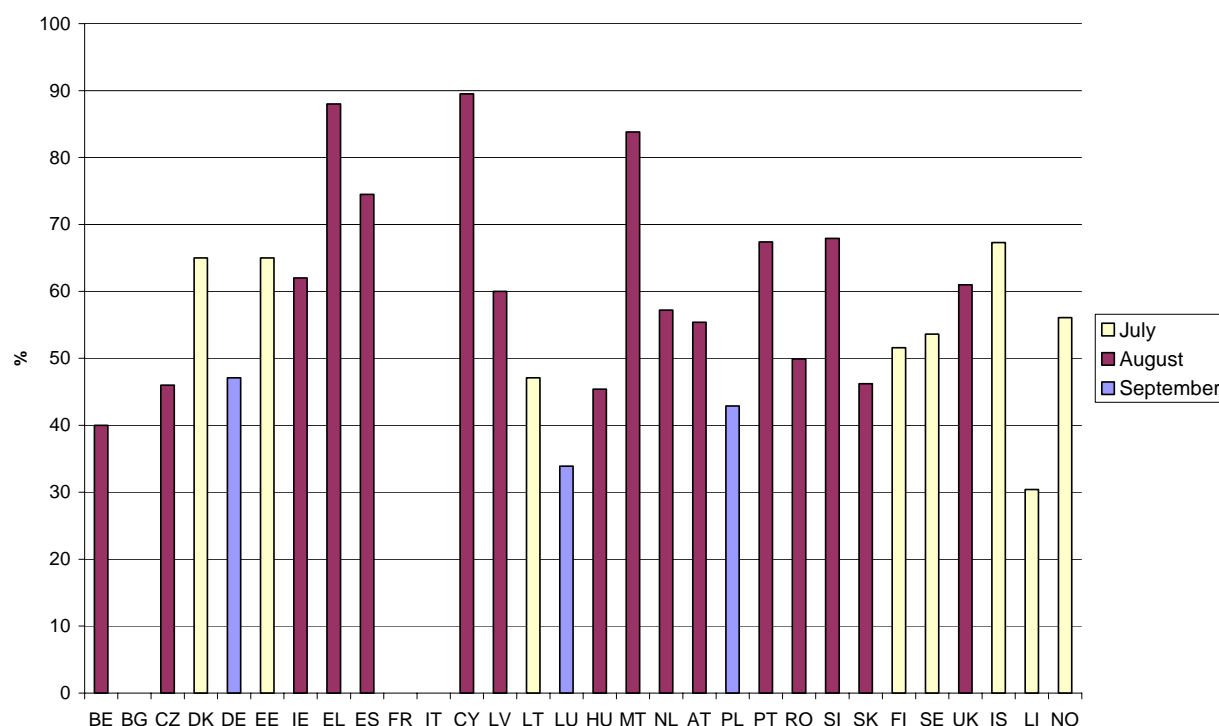
**Table 2: Net occupancy rates in hotels and similar establishments**

%	Summer season 2005				Summer season 2006				Change in percentage points			
	JUN	JUL	AUG	SEP	JUN	JUL	AUG	SEP	JUN	JUL	AUG	SEP
BE	36.2	37.5	41.6	39.4	38.3	38.9	40.0	39.4	2.1	1.4	-1.6	0.0
BG*	32.8	54.4	54.4	54.4	30.6	47.4	47.4	47.4	-2.2	-7.0	-7.0	-7.0
CZ	37.6	41.9	45.8	39.7	38.3	41.7	46.0	41.0	0.7	-0.2	0.2	1.3
DK	49.0	63.0	58.0	48.0	51.0	65.0	60.0	50.0	2.0	2.0	2.0	2.0
DE	38.9	40.2	44.3	44.6	40.8	41.1	43.5	47.1	1.9	0.9	-0.8	2.5
EE	53.0	70.0	61.0	48.0	54.0	65.0	59.0	47.0	1.0	-5.0	-2.0	-1.0
IE	55.0	57.0	60.0	51.0	52.0	57.0	62.0	53.0	-3.0	0.0	2.0	2.0
EL	63.9	80.3	91.4	72.6	67.9	82.7	88.0	73.2	4.0	2.4	-3.4	0.6
ES	57.0	65.1	73.9	63.4	61.0	67.9	74.5	64.7	4.0	2.8	0.6	1.3
FR	:	:	:	:	:	:	:	:	:	:	:	:
IT	47.3	56.8	64.3	45.2	:	:	:	:	:	:	:	:
CY	69.7	79.1	93.2	76.5	71.8	78.4	89.5	73.9	2.1	-0.7	-3.7	-2.6
LV	45.7	54.8	53.3	39.4	41.2	51.5	60.0	36.6	-4.5	-3.3	6.7	-2.8
LT	39.8	46.8	45.2	34.5	43.7	47.1	47.0	38.6	3.9	0.3	1.8	4.1
LU	31.3	33.7	35.3	32.9	32.7	32.7	33.8	33.9	1.4	-1.0	-1.5	1.0
HU	33.1	39.5	43.5	35.9	34.5	41.8	45.4	37.1	1.4	2.3	1.9	1.2
MT	66.5	81.1	87.0	70.4	61.2	77.8	83.8	63.9	-5.3	-3.3	-3.2	-6.5
NL	47.8	49.7	56.2	48.6	52.6	53.1	57.2	54.3	4.8	3.4	1.0	5.7
AT	35.9	47.5	58.1	40.2	38.2	48.1	55.4	42.4	2.3	0.6	-2.7	2.2
PL	41.5	41.8	44.3	42.3	41.1	41.3	42.8	42.9	-0.4	-0.5	-1.5	0.6
PT	45.4	50.9	63.2	50.0	47.3	54.5	67.4	53.2	1.9	3.6	4.2	3.2
RO	37.8	45.5	51.1	37.2	32.7	44.6	49.9	35.8	-5.1	-0.9	-1.2	-1.4
SI	52.7	59.3	70.0	57.8	55.9	59.2	67.9	57.1	3.2	-0.1	-2.1	-0.7
SK	38.9	41.6	47.1	39.6	38.9	42.7	46.2	39.9	0.0	1.1	-0.9	0.3
FI	37.8	49.2	41.0	36.1	40.4	51.6	43.2	39.7	2.6	2.4	2.2	3.6
SE	36.6	51.6	44.4	37.7	36.9	53.6	45.5	38.6	0.3	2.0	1.1	0.9
UK	51.0	55.0	56.0	52.0	53.0	58.0	61.0	57.0	2.0	3.0	5.0	5.0
IS	46.4	64.0	59.4	35.4	47.1	67.3	60.1	39.7	0.7	3.3	0.7	4.3
LI	23.6	27.8	30.7	22.9	25.3	30.4	28.0	26.4	1.7	2.6	-2.7	3.5
NO	45.8	54.9	49.7	37.7	45.3	56.1	50.1	38.9	-0.5	1.2	0.4	1.2

(\*) BG: The figures of July, August and September are identical because they are based on quarterly data.

Source: Eurostat, Tourism Statistics

**Figure 2: Net occupancy rates of bed places in hotels and similar establishments in the peak month, summer season 2006**



Data not available for BG, FR and IT

Source: Eurostat, Tourism Statistics

## METHODOLOGICAL NOTES

### CONCEPTS AND DEFINITIONS

#### Net occupancy rate

The net occupancy rate of bedplaces in one month is obtained by dividing total overnight stays by the product of the bedplaces on offer and the number of days when the bed-places are actually available for use (net of seasonal closures and other temporary closures for decoration, by police order, etc.) for the same group of establishments, multiplying the quotient by 100 to express the result as a percentage.

#### Hotels and similar establishments

Hotels, apartment hotels, motels, roadside inns, beach hotels and other similar establishments which provide hotel services including more than bed-making and cleaning of the room and sanitary facilities. Similar establishments are other similar types of accommodation which is let per room and has a limited number of hotel-type services, including bed-making and cleaning of rooms and sanitary facilities, on a daily basis.

#### Country codes

EU-27: European Union	IE: Ireland	LT: Lithuania	PT: Portugal	IS: Iceland
BG: Bulgaria	EL: Greece	LU: Luxembourg	RO: Romania	LI: Liechtenstein
BE: Belgium	ES: Spain	HU: Hungary	SI: Slovenia	NO: Norway
CZ: Czech Republic	FR: France	MT: Malta	SK: Slovakia	
DK: Denmark	IT: Italy	NL: Netherlands	FI: Finland	
DE: Germany	CY: Cyprus	AT: Austria	SE: Sweden	
EE: Estonia	LV: Latvia	PL: Poland	UK: United Kingdom	

#### Symbols

":." data unavailable or unreliable

## FURTHER INFORMATION

### European Statistical Data Support

Contact details for this support network can be found on the Eurostat Internet site:

<http://ec.europa.eu/eurostat> → Services: Help/Data support