

Breakdown by herd size of EU animal surveys in 1997

Albert Jerabek

Ongoing trend towards bigger holdings, but strong diversity of the structure by Member State, sector and herd size class

According to Council Directives 93/23/EEC, 93/24/EEC and 93/25/EEC, Member States shall compile a breakdown by herd size of the results of the November/December livestock surveys in odd-numbered years (with exemptions possible). This issue of "Statistics in focus" comments on data from the 1997 surveys of pig, cattle, sheep and goats compared to the data from 1995 and for pigs and cattle also from 1987¹. The ongoing development towards bigger holdings can be seen between 1995 and 1997 at EU-15 level in all sectors. The period from 1987 to 1997 shows a strong concentration process in the sectors of pig and cattle rearing. However significant differences can be observed between individual Member States, in the different sectors of animal rearing and size classes. This confirms the diversity of European agriculture.

The 1997 structure of pig rearing in EU-15 is characterised by a wide range of diversity (the average herd size is from 18 to 818 head; E², I and D represent 64% of pig holders; D, E, F and NL keep 61% of pigs) and dynamic development since 1987 (the EU-12 average herd size grew from 56 to 110 head; the number of holders fell from 1,87 million to 1,04 million or a reduction of 44,6%). In 1997 36% of EU pigs were kept in holdings of 200 to 999 head and 51,8% in units of 1000 head and more, with IRL, I and UK showing the highest concentration in head while NL, B and DK show the highest percentage of large holders.

The 1997 structure of cattle rearing also shows a dynamic concentration process since 1987; however, comparing 1997 to 1995, the speed of this process is slower than in the pig sector. In EU-12 the number of holders decreased from 2,53 million to 1,58 million (= -37,4%) within the last 10 years, whilst the number of cattle went down only from 79,8 million head to 78,9 million. In 1997 P and EL show a specific structure in the smallest category of 1 to 9 animals, where 82,5% and 69,4% respectively of holders keep 30,2% and 18,3% of cattle. The largest units of 500 animals and more are more pronounced in I (15,6% of all I cattle), D (13,4%) and NL (10,1%). In EU-15 70% of all cattle are raised in holdings of 1 to 49 animals and only 13,3% in the category of 100 animals and more. The average herd size ranges from 9 head in P to 108 head in L.

Sheep rearing in 1997 ranges from an average 11 head per herd in L to 323 in the UK. I (128 600 = 128,6K holders), EL (124,6K) and F (100,1K) lead in the number of holders. UK: 29,5 million, E: 24,8 million, I: 10,9 million and F: 9,8 million have the largest number of sheep. I (49,6K holders), D (42K) and P (40,8K) have a large number of holders in the smallest size group of 1 to 9 head, whilst UK (56,6K holders) and F (45,9K) show a strong representation in the herd size of 100 head and more.

¹ All 1987 data: Germany and EU-12 without the new German Federal States

² Abbreviations of the Member States: B = Belgium, DK = Denmark, D = Germany, EL = Greece, E = Spain, F = France, IRL = Ireland, I = Italy, L = Luxembourg, NL = Netherlands, A = Austria, P = Portugal, FIN = Finland, S = Sweden, UK = United Kingdom of Great Britain and Northern Ireland

Statistics in focus

AGRICULTURE AND FISHERIES

THEME 5 – 13/1999

AGRICULTURE

Contents

Ongoing trend towards bigger holdings, but strong diversity of the structure by Member State, sector and herd size class 1

The structure of pig rearing 1997 – 1995 – 1987 2

The structure of cattle rearing 1997 – 1995 – 1987 2

The structure of sheep rearing 1997 – 1995 3

The structure of goat rearing 1997 – 1995 4



Goat rearing in 1997 ranges from an average of 3 head per herd in IRL to 68 head in E. EL (160K), I (63K) and P (58,8K) have the largest number of holders; by number of goats, EL leads (5,9 million head) before E (3 million). EL (105,5K), P (48,9) and I (40,8K) show the largest number of holders in size class of 1 to 9 animals, while EL is the outstanding leader in size classes of 100 head and more (35% of all EU goats).

The structure of pig rearing 1997 – 1995 – 1987

Between 1995 and 1997, the number of pigs in EU-15 increased by +3,5%, whilst the number of holders decreased by -9,7%. This decline could be seen in all EU countries except for the UK, where the number of holders was 5,9% higher in 1997 than in 1995 and the number of animals increased during the same period by 8.2%. Between 1987 and 1997 the EU-12 number of pigs increased by 9%, however the number of holders decreased by almost half (-44,6%). The highest decline in the number of holders from 1987 to 1997 was in L and EL (-63,3% and -61,2% respectively), the lowest was in E and UK (-21,3% and -31,1% respectively). In 1997 the most important countries in the sector of pig production are D (20% of total EU-15), E (16%), F (13%) and NL (12%).

Looking at the EU-15 1997/1995 (1987 for EU-12) pig surveys in total, we observe that in size class 1 to 9 animals 71,0%/72,3% (70,3%) of holders kept only 1,5%/1,8% (3,1%) of all pigs; in size class 10 to 49 animals 10,4%/10,5% (15,3%) of holders kept 2,4%/2,7% (5,9%) of all pigs; in size class 50 to 199 animals 8,0%/7,5% (7,8%) of holders kept 8,4%/8,7% (14,3%) of all pigs; in size class 200 to 999 animals 8,1%/7,6% (5,7%) of holders kept 36,0%/38,4% (44,8%) of all pigs and in size class 1000 and more animals only 2,6%/2,1% (0,9%) of holders kept 51,8%/48,6% (31,9%) of all pigs,

The highest concentration in pig rearing 1997 can be observed in IRL (average size of herd 818 head), NL (723), B (629), DK (605) and UK (557). The highest share of large holders (more than 1000 head) can be found in NL: 23,9% of total number of holders in 1997, compared to only 10,1% in 1987. The largest herds are reported from IRL and UK. In IRL 91,2% of all pigs are reared in a herd of 1000 head and more. For the number of holders, the share of this size of rearing increased in IRL from 4,3% in 1987 to 14,3% in 1997. In 1997 77,7% of all pigs in the UK were kept in a herd of 1000 head and more (=16% of all holders, where 8,5% kept 1000 to 1999 head, 6% kept 2000 to 4999 head and 1,5% kept more than 5000 head and held 24% of all UK pigs).

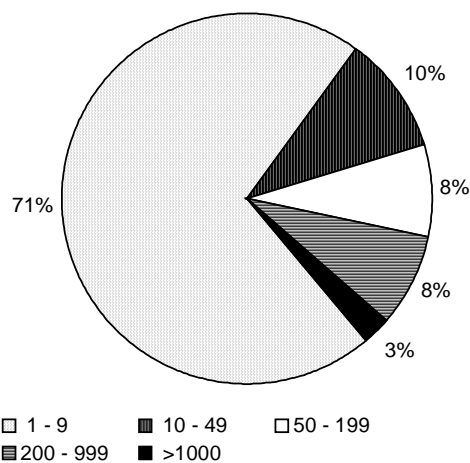
In I in 1997 we observe a very specific situation: Less than 1% of holders (group of 1000 head and more) kept 71,3% of all pigs and 30,3% of pigs were in herds of 5000 animals and more. At the same time 90,8% of

holders in Italy kept only 1 to 9 pigs.

NL shows the strongest progress of concentration during the last 10 years. In 1997, 45,1% of holders kept 200 to 999 pigs and 23,9% kept more than 1000 pigs (the share of this group has increased twofold since 1987). Only 2,5% of holders in the NL kept 1 to 9 animals (against 5,3% in 1987) and only 4,5% kept 10 to 49 head (10,9% in 1987)

In B in 1997, 42,7% of holders kept 200 to 999 heads, about 2/3 of them are of the size 400 to 999 head. 21,4% of holders kept 1000 head and more. During the last 10 years, in B the holders' share in the category 1 to 9 head decreased from 22,4% in 1987 to 7,8% in 1997, in the category 10 to 49 head it dropped from 20,8% to 9,4%.

Structure of pig holders (EU-15) 1997
(number of animals per holder)



In DK 34,6% holders kept 200 to 999 head in 1997, and, as in B, about 2/3 of them were in the category of 400 to 999 head. 20% of holders kept 1000 head and more.

In 1997 FIN presents another specific situation: The largest group of holders is medium size: 56% were in the category of 100 to 399 head. Small and very large holders are relatively rare in FIN.

Countries with the smallest concentration in pig rearing in 1997 were P (average size of herd 18 head), I (33), A (37) and EL (43).

I, P and EL were the countries with the biggest share of small holders. In EL, the share of holders in the size 1 to 9 head even increased in 1995/1997 (from 83,5% to 85,2%) and also in I (from 90,4% to 90,8%). In P 10,6% of pigs were in herds of 1 to 9 head (against 20,8% in 1987) and 12,3% of pigs were in herds of 10 to 49 head. In these countries the share of holders in size class 1000 and more was less than 1%.

The structure of cattle rearing 1997 – 1995 – 1987

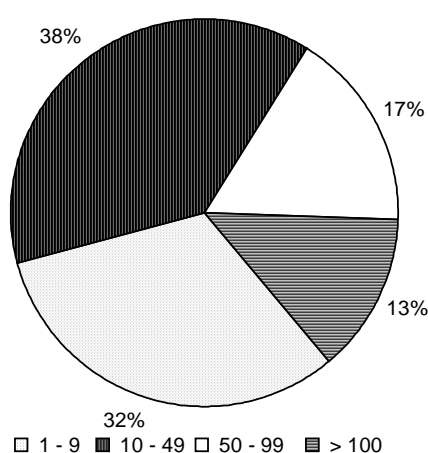
In 1997 in the bovine animal sector also the concentration of rearing has increased since 1995 in all

EU countries, except for the UK. The structure of holders is more balanced than in the other sectors.

The 1997/1995 surveys for EU-15 and the 1987 survey for EU-12 show, that 1997/1995 31,9%/34,1% of holders belonged to the category of 1 to 9 animals, keeping 2,8%/3,3% of all cattle in EU-15, against EU-12 in 1987 with 41,4% of holders and 5,6% of head. 1997/1995 38,1%/38,5% of holders belonged to the category of 10 to 49 head, keeping 20,1%/21,6% of all cattle in EU-15, against EU-12 in 1987 with 38,8% of holders and 29,6% of head. 1997/1995 16,7%/15,6% of holders belonged to the category of 50 to 99 animals, keeping 24,9%/25,3% of all cattle in EU-15, against EU-12 in 1987 with 13,3% of holders and 29,4% of head. In 1997/95 the category of 100 animals and more accounted for 13,3%/11,8% of holders (being the smallest group) but for 52,2%/49,8% of all cattle in EU-15, against EU-12 in 1987 with 6,4% of holders and 35,5% of head.

The number of holders decreased in EU-15 from 1,93 million in 1995 to 1,77 million in 1997 (-8,5%), in EU-12 the decrease was -37,4% during the last 10 years. From 1995 to 1997, the biggest changes in the number of holders can be observed in P (85,5% of the year 1995), FIN (87,9%) and E (89,3%). In comparison with the number of holders in 1987, there were now only 42,3% holders in EL, 51% in I and 53,4% in E. During the same period the number of cattle also decreased in EL (to 80,4% of 1987), in I (81,5%) and in DK (88%). In 1997 more than half of all EU-15 cattle were held in three countries: 24% in F, 19% in D and 13% in UK.

Structure of cattle holders (EU-15) 1997
(number of animals per holder)



Countries with the biggest concentration in cattle rearing in 1997 were L (average size of herd 108 head), UK (78), NL (85), B and DK (73). In L 45,3% of holders kept 100 animals and more against 27,5% in 1987.

In 1997 in the UK 31,4% of holders kept 100 animals and more (25,8% in 1987). In the category 100 to 199 animals 20,2 % of holders were located, in the category 200 to 299 animals 7,1 % holders. 70,6 % of all UK

cattle were in herds of 100 head and more (31,8% with 100 to 199 head and 19,1% with 200 to 299 head).

In 1997 in B 25,4% and in F 22,5% of holders kept more than 100 head. NL and DK show 30,2% and 29,5% in this category. In NL 10,1% of total cattle was in herds of 500 animals and more, with 1,1% of NL holders in this category we observe the highest concentration in EU-15.

Countries with the lowest concentration of cattle rearing in 1997 are P (average size of herd 9 head) and EL (17), A (20), E and FIN (30 head).

A special structure of cattle rearing in small to medium-sized holdings can be seen in FIN and A. In 1997, 75,9% of holders in FIN kept 10 to 49 head (=66,5% of total cattle). In A 58,5% of holders kept 68,5% of total cattle in the same category.

The structure of sheep rearing 1997 – 1995

Rearing of sheep in EU-15 is characterised by a gradual specialisation amongst the EU countries. The number of holders decreased in EU-15 from 863,1K in 1995 to 773,6K in 1997 (a reduction of -10,5%). The number of sheep increased in EU-15 from 93,8 million head in 1995 to 98,2 million in 1997 (+ 4,7%). This increase was due to the evolution in sheep rearing in the two most important countries of this sector: in UK with 31% of total EU sheep and E with 26%. The next group of countries has almost an equal share with about 10%: EL, F and I. These 5 countries keep 88% of all sheep in EU-15.

The number of holders dropped in all EU countries. In the UK it dropped by -7,1% against 1995, in E by -7,7%, in I by -19,7%, in F and EL about by -5%. The number of head dropped in most countries, except for those with the biggest share in total EU rearing. In E it increased by +16,7% against 1995, in UK by +3,9%, in Italy by +1,9%, in F and EL it decreased slightly.

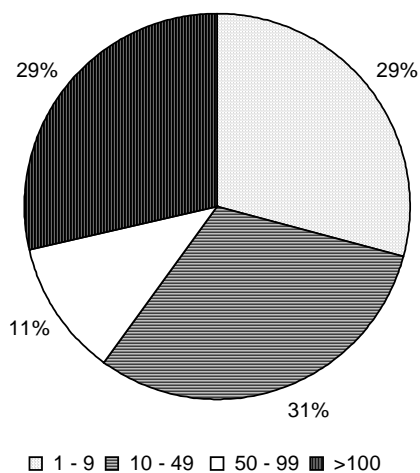
In 1997/1995 29,3%/31,7% of holders belonged to the category of 1 to 9 animals and they kept only 1,1%/1,3% of all EU sheep. 30,8%/31,2% of holders belonged to the category of 10 to 49 animals and they kept 5,7%/6,5% of all EU sheep. 11,4%/11,5% of holders belonged to the category 50 to 99 animals and they kept 6,4%/7,4% of all EU sheep. 28,5%/25,6% of the holders belonged to category of 100 head and more and they kept 86,8%/84,7% of all EU sheep.

In 1997, the two leading countries also showed the most intensive concentration in sheep rearing. In the UK the average herd size was 323 head (+11,9% against 1995) and in E 311 head (+26,5%). Far behind these countries were IRL with an average herd size of 117 head (+ 6,8%), F with 98 (+ 10,6%) and I with 85 (+ 26,8%).

In 1997 in the UK 61,9 % holders kept more than 100 head (this group kept 95,1% of all sheep in UK). Since 1995 the share of holders in the category 1000 head

and more has increased and in 1997 accounted for 7,3% of all UK holders, who kept 37,2% of all UK sheep. 26,4% of all UK sheep were kept by 12,2% of holders in the category of 500 to 999 head.

Structure of sheep holders (EU-15) 1997
(number of animals per holder)



A very similar situation can be seen in 1997 in E. 57,4% of holders kept more than 100 head and 94,9% of all E sheep. In E the share of holders with 1000 head and more has increased from 3,5% in 1995 to 5% in 1997, where they kept 27,9% of all E sheep. 31,9% of all E sheep were kept by 13,7% of holders in herds of 500 to 999 head.

In 1997 in IRL 37,7% of holders were in the category of 100 head and more (mainly in the group of 100 to 499 head) and kept 75,9% of all IRL sheep. The smallest category of 1 to 9 head was very insignificant. In F and I the group of holders with 100 head and more takes a large share in sheep rearing: 1997, in F 23,6% of holders kept 84,4% of all sheep; in I 22,8% of holders kept 84,7% of all sheep.

The structure of goat rearing 1997 – 1995

Almost a half of all goats in EU-15 were reared in 1997 in EL and a further quarter in E. The next group of countries with considerable importance in goat rearing is represented by I (11% of all EU goats), F (9%) and P (6%). Goat production in the remaining EU countries is negligible. The 1997 survey also showed a further trend to gradual specialisation within the EU.

The number of holders decreased in EU-15 from 407,1K in 1995 to 377K in 1997 (-7.4%); the number of head increased in EU-15 from 11,8 million in 1995 to 12,4 million in 1997 (+ 5.1%).

The number of holders dropped slightly in EL (-3,5% against 1995) while over the same period the number of animals increased slightly. In 1997 in E the number of holders was almost the same as in 1995 (-0,5%), but the number of animals increased significantly from 2,5 million to 3 million head (+22%). In I and P we observe a slight decrease in the number of head, but during this

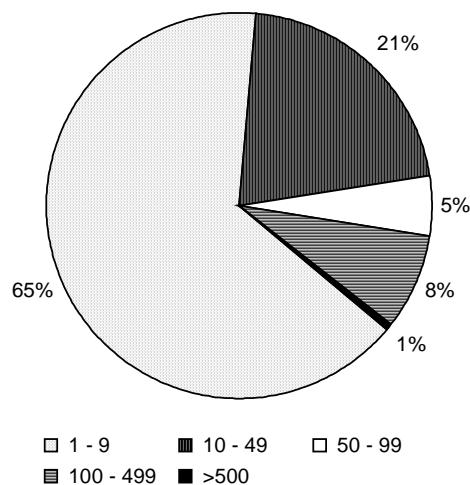
period the number of holders dropped substantially (-16,3% in I, -12,6% in P).

The 1997/1995 surveys show that in EU-15 65,4%/66,3% of holders belonged to the smallest category with 1 to 9 animals, but they kept only 7,2%/8,1% of all EU goats. 20,9%/20,9% of holders belonged to the group with 10 to 49 animals and kept 14,0%/15,4% of all EU goats. 4,9%/5,1% of holders kept 50 to 99 animals and 10,8%/12,5% of all goats. 8,1%/7,1% of holders belonged to the category of 100 to 499 animals and they kept 54,0%/50,8% of all goats in the EU. 0,7%/0,6% of the holders belonged to the group with 500 and more animals and they kept 13,9%/13,2% of all goats.

In 1997 the country with the biggest concentration in goat rearing was E with an average herd size of 68 head (+22.6% against 1995). Far behind were F with an average herd size of 38 head (+15%) and EL with 37 head (+4.1%). Herd size has also increased in I (+17.2%) and P (+12.4%).

In 1997 E has the biggest share of large holders. 19,4% of holders kept more than 100 head with 73,5% of all goats. In E, 1,7% holders kept 16,6% of all goats in herds of more than 500 head.

Structure of goat holders (EU-15) 1997
(number of animals per holder)



In 1997 in EL 10,2% of holders kept 74,1% of all goats in herds of more than 100 head and 0,9% of holders kept 16,7% of all goats in herds of more than 500 head. In F the group of holders with 100 head and more is of significant importance for goat rearing: 12% of holders kept 68,4% of all F goats in 1997.

Though NL keeps only 0,96% of all EU-goats, an interesting development can be observed between 1995 and 1997: The number of holders increased by 48,5% from 2700 to 4000, the number of goats by 55,9% from 76,1 K to 118,5K. 1997/1995 35%/25% of all NL goats were kept in herds of 500 head and more, whilst the share in the number of holders remained at by 1,5%/1,1%.

Structure of pig holders

	Total			Number of animals per holder														
				1 - 9			10 - 49			50 - 199			200 - 999			> 1000		
	1997	1995	1987	1997	1995	1987	1997	1995	1987	1997	1995	1987	1997	1995	1987	1997	1995	1987
Number of holders (1000)																		
EU-15	1153,1	1276,9	:	818,9	922,8	:	119,5	134,0	:	92,2	96,3	:	92,8	96,8	:	29,7	26,9	0,0
EU-12	1038,1	1146,7	1872,6	743,4	838,1	1317,1	105,3	116,5	286,5	78,5	80,4	145,9	81,8	85,2	106,0	29,1	26,4	17,1
B	11,6	13,0	26,5	0,9	1,2	5,9	1,1	1,3	5,5	2,2	2,7	7,2	5,0	5,5	6,8	2,5	2,3	1,0
DK	18,8	21,4	37,7	1,3	1,5	3,4	3,1	4,0	9,7	4,1	5,1	11,9	6,5	7,3	10,9	3,8	3,4	1,7
D	205,3	239,3	392,4	100,0	119,9	187,1	41,4	49,4	105,4	32,0	37,0	66,2	28,7	30,2	32,8	3,3	2,8	0,9
EL	21,6	24,2	55,7	18,4	20,2	48,5	1,8	2,5	4,3	0,8	0,8	2,0	0,4	0,5	0,7	0,2	0,2	0,2
E	284,5	301,0	361,7	224,9	250,0	234,8	18,8	19,0	85,4	21,9	15,0	23,0	14,3	13,0	15,6	4,6	4,0	2,9
F	77,9	90,0	186,5	53,5	64,4	144,5	4,7	5,4	15,1	4,7	5,2	10,9	10,2	10,7	13,8	4,8	4,3	2,2
IRL	2,1	2,5	4,7	0,8	1,1	2,7	0,5	0,6	1,2	0,2	0,2	0,3	0,3	0,3	0,3	0,3	0,3	0,2
I	250,1	279,6	487,1	227,0	252,7	444,0	15,8	17,6	31,2	2,6	4,0	5,3	2,8	3,5	4,8	1,9	1,7	1,8
L	0,5	0,5	1,4	0,2	0,2	0,8	0,1	0,1	0,3	0,1	0,1	0,2	0,1	0,1	0,1	0,0	0,0	0,0
NL	21,0	22,4	35,4	0,5	0,7	1,9	0,9	1,3	3,9	5,1	5,7	11,3	9,5	10,0	14,7	5,0	4,7	3,6
A	100,5	112,1	0,0	73,3	82,0	:	11,7	13,9	:	9,3	10,1	:	6,1	6,1	:	0,0	0,0	:
P	130,3	139,3	262,8	111,9	121,6	238,2	14,1	13,1	19,2	2,7	3,0	3,9	1,1	1,1	1,2	0,5	0,5	0,3
FIN	6,0	7,4	0,0	0,4	0,5	:	0,6	1,0	:	2,4	3,0	:	2,5	2,8	:	0,1	0,0	:
S	8,5	10,7	0,0	1,7	2,2	:	1,8	2,8	:	2,0	2,7	:	2,4	2,7	:	0,5	0,4	:
UK	14,2	13,5	20,7	4,0	4,5	5,2	2,9	2,1	5,3	2,1	1,6	3,7	2,9	3,0	4,4	2,3	2,2	2,2
Number of animals (1000)																		
EU-15	121951,1	117807,5	:	1847,1	2086,9	:	2884,5	3202,2	:	10183,0	10228,1	:	43865,3	45184,4	:	63171,2	57106,0	:
EU-12	114476,3	110402,3	105016,9	1640,2	1857,4	3250,8	2553,0	2789,5	6237,2	8643,0	8477,2	15026,4	39637,9	41062,5	47012,6	62002,2	56215,8	33489,9
B	7313,2	7268,5	5861,5	3,3	4,2	20,2	28,4	35,7	145,0	261,3	326,3	784,8	2633,5	2855,7	3006,5	4386,8	4046,6	1905,0
DK	11383,2	11083,9	9266,4	5,8	6,8	16,3	81,7	105,8	260,4	456,5	564,9	1268,7	3333,6	3694,0	4950,0	7505,6	6712,4	2771,1
D	24250,0	24674,0	24469,7	335,0	397,0	669,7	980,0	1174,0	2515,9	3360,0	3860,0	6646,5	13189,0	13525,0	13264,3	6386,0	5718,0	1373,3
EL	936,0	912,0	1138,0	34,0	39,0	85,3	37,0	42,0	102,3	70,0	65,0	170,2	198,0	203,0	311,0	597,0	563,0	469,1
E	19556,3	18125,9	17227,8	397,8	451,0	618,2	606,5	563,0	1678,3	2510,2	1420,0	2325,5	6979,9	6500,0	6995,2	9061,9	9191,9	5610,7
F	15472,6	14530,5	11914,2	112,5	137,8	318,9	108,1	134,5	355,4	563,6	604,9	1207,0	5297,0	5642,8	6409,7	9391,4	8010,5	3623,2
IRL	1716,9	1542,4	960,2	2,0	2,6	7,1	9,9	11,9	27,4	14,7	15,6	32,7	124,7	152,5	145,3	1565,6	1359,8	747,7
I	8281,1	8063,1	9383,0	482,2	523,8	975,4	311,3	346,6	558,6	240,7	390,3	484,7	1345,2	1560,2	2314,5	5901,7	5242,2	5049,8
L	73,7	68,2	76,8	0,8	0,9	2,7	3,0	3,7	8,4	11,1	11,8	21,8	38,6	40,4	34,4	20,3	11,4	9,5
NL	15189,1	14397,5	14348,7	1,8	2,6	7,4	28,2	38,1	108,9	613,1	684,1	1305,3	4581,6	4944,9	6977,2	9964,4	8727,8	5949,9
A	3679,9	3706,2	:	200,2	227,6	:	264,8	316,0	:	1004,0	1089,1	:	2131,1	2016,6	:	79,8	56,9	:
P	2365,0	2401,8	2456,0	251,7	277,5	511,2	291,6	286,2	349,3	324,5	361,2	391,6	447,0	446,8	489,2	1050,2	1030,1	714,6
FIN	1443,9	1394,0	:	1,7	1,9	:	19,7	26,7	:	314,0	369,8	:	986,3	936,3	:	122,2	59,3	:
S	2351,0	2305,0	:	5,0	0,0	:	47,0	70,0	:	222,0	292,0	:	1110,0	1169,0	:	967,0	774,0	:
UK	7939,3	7334,5	7914,5	13,4	14,3	18,6	67,4	48,0	127,2	217,4	173,0	387,5	1469,9	1497,2	2115,3	6171,3	5602,1	5266,0

Structure of cattle holders

	Total			Number of animals per holder														
				1 - 9			10 - 49			50 - 99			100 - 199			> 200		
	1997	1995	1987	1997	1995	1987	1997	1995	1987	1997	1995	1987	1997	1995	1987	1997	1995	1987
Number of holders (1000)																		
EU-15	1767,7	1932,6	:	563,1	659,3	:	673,6	743,3	:	295,2	302,0	:	177,4	174,4	:	58,5	53,6	:
EU-12	1583,8	1731,2	2530,0	515,4	603,5	1048,5	563,4	621,5	982,1	274,4	282,9	336,4	172,7	170,1	139,9	57,9	53,2	23,0
B	43,5	47,6	63,8	6,6	7,2	13,2	14,5	16,8	26,9	11,3	12,5	16,4	8,6	8,9	6,6	2,4	2,3	0,7
DK	27,6	30,3	40,7	5,2	5,5	7,7	9,2	10,1	15,0	5,0	6,4	10,1	6,4	6,7	6,9	1,7	1,5	1,0
D	286,8	314,3	430,5	69,3	80,6	107,7	116,4	131,0	216,1	62,4	67,0	81,8	30,1	28,3	23,0	8,7	7,5	1,9
EL	36,0	38,0	85,2	25,0	27,0	68,0	10,0	10,0	14,8	1,0	1,0	1,7	0,0	0,0	0,6	0,0	0,0	0,0
E	197,6	221,3	370,4	92,8	111,0	246,1	78,3	87,0	111,7	14,1	14,0	7,3	7,8	6,0	4,1	4,7	3,3	1,3
F	300,3	331,9	498,2	45,4	53,7	96,0	101,3	119,4	242,5	86,1	91,2	117,6	54,6	55,9	38,6	12,9	11,6	3,5
IRL	132,7	135,8	169,4	18,8	22,7	39,5	66,4	69,7	96,9	28,4	26,9	23,7	15,4	13,3	8,2	3,7	3,2	1,1
I	227,2	250,3	445,7	109,8	125,6	254,7	84,3	91,6	158,7	18,5	17,8	19,8	8,8	10,0	9,6	5,8	5,4	2,9
L	1,9	2,1	2,9	0,1	0,2	0,4	0,4	0,4	0,8	0,5	0,6	0,9	0,7	0,7	0,7	0,2	0,1	0,1
NL	52,1	56,2	70,3	6,0	6,5	9,0	15,0	16,7	24,1	15,4	16,4	22,7	12,6	13,4	12,9	3,1	3,3	1,6
A	107,8	116,6	:	37,2	41,2	:	63,1	67,5	:	7,1	7,3	:	0,5	0,5	:	0,0	0,0	:
P	148,6	173,7	211,0	122,6	145,7	186,0	21,8	24,2	22,0	2,4	2,1	1,9	1,6	1,5	0,9	0,2	0,2	0,2
FIN	37,6	42,8	:	3,4	5,7	:	28,5	33,7	:	5,0	3,1	:	0,6	0,3	:	0,1	0,0	:
S	38,5	42,0	:	7,1	8,9	:	18,5	20,6	:	8,7	8,7	:	3,7	3,5	:	0,5	0,4	:
UK	129,5	129,7	141,8	13,8	17,9	20,2	45,9	44,6	52,7	29,2	27,0	32,4	26,1	25,5	27,8	14,5	14,8	8,8
Number of animals (1000)																		
EU-15	83969,9	84872,0	:	2364,1	2765,2	:	16902,3	18379,7	:	20885,2	21484,8	:	24118,8	23691,0	:	19699,5	18551,3	:
EU-12	78866,0	79589,9	79837,7	2127,3	2482,1	4461,2	14171,5	15379,9	23602,2	19554,6	20194,0	23445,9	23415,2	23051,4	17943,3	19597,5	18482,5	10385,1
B	3157,1	3286,1	3079,1	31,0	34,7	60,3	390,2	450,1	729,0	826,7	910,9	1155,9	1169,5	1200,3	835,0	739,8	690,1	299,0
DK	2004,2	2090,4	2276,3	25,3	26,5	35,7	234,1	253,7	398,8	371,4	473,1	728,2	891,6	918,2	910,4	481,8	419,0	203,1
D	15740,0	15953,0	15291,2	311,0	359,0	544,2	3058,0	3436,0	5497,7	4390,0	4685,0	5607,6	4028,0	3757,0	2970,0	3953,0	3716,0	671,7
EL	596,0	575,0	741,1	109,0	111,0	246,0	234,0	233,9	284,8	136,0	117,0	118,2	89,0	86,7	82,1	28,0	26,4	10,0
E	5883,7	5494,0	5076,2	382,7	474,0	1141,7	1832,0	1951,0	2182,5	1002,6	1043,0	509,0	1069,4	925,0	539,4	1597,0	1101,0	703,7
F	20153,6	20646,8	20716,4	216,8	255,4	476,4	2789,8	3231,3	6359,4	6186,3	6519,1	8201,3	7426,2	7470,3	4910,9	3534,4	3170,7	768,4
IRL	6991,8	6531,6	5579,8	107,8	127,5	222,5	1718,4	1778,2	2290,0	1993,9	1881,8	1621,9	2045,3	1766,8	1035,1	1126,4	977,3	410,3
I	7166,4	7270,3	8793,5	455,4	514,5	1017,5	1909,9	2006,8	3370,5	1261,9	1209,1	1350,4	1178,8	1323,3	1045,3	2360,3	2216,6	2009,8
L	205,2	203,8	208,4	0,7	0,7	1,6	10,8	11,8	23,9	39,4	42,4	70,0	97,8	101,7	97,1	56,5	47,3	15,7
NL	4410,6	4654,2	4894,8	30,0	33,4	44,5	405,0	449,4	672,5	1141,5	1214,9	1646,3	1674,8	1790,3	1552,3	1159,4	1166,3	979,1
A	2197,9	2325,8	:	181,2	201,6	:	1505,4	1601,9	:	443,4	459,7	:	61,7	56,5	:	6,1	6,0	:
P	1285,0	1324,0	1332,3	387,6	454,7	568,8	389,8	405,9	413,9	158,9	144,2	128,9	157,8	137,3	108,4	190,9	181,9	112,3
FIN	1125,0	1179,3	:	17,6	34,5	:	748,4	872,9	:	280,2	229,1	:	64,9	36,1	:	13,9	6,7	:
S	1781,0	1777,0	:	38,0	47,0	:	477,0	525,0	:	607,0	602,0	:	577,0	547,0	:	82,0	56,0	:
UK	11272,5	11560,7	11848,5	70,1	90,8	101,9	1199,4	1171,8	1379,2	2046,0	1953,5	2308,1	3586,9	3574,5	3857,3	4370,0	4770,1	4202,1

Structure of sheep holders
Structure of goat holders

	Total		Number of animals per holder						Total		Number of animals per holder					
	1997	1995	1- 9		10 -99		> 100		1997	1995	1- 9		10 - 99		> 100	
			1997	1995	1997	1995	1997	1995			1997	1995	1997	1995	1997	1995
	Number of holders (1000)								Number of holders (1000)							
EU-15	773,6	863,1	226,3	273,5	326,6	368,4	220,6	221,2	377,0	407,1	246,5	270,0	97,6	105,8	33,0	31,4
B	5,0	5,5	2,2	2,3	2,5	2,8	0,3	0,3	1,0	0,8	0,8	0,6	0,2	0,1	0,0	0,0
DK	3,9	4,4	1,5	1,8	2,1	2,4	0,2	0,2	0,0	0,0	0,0	0,0	0,0	0,0	0,0	0,0
D	68,8	77,1	42,0	48,4	23,1	24,9	3,7	3,7	0,0	0,0	0,0	0,0	0,0	0,0	0,0	0,0
EL	124,6	130,4	25,5	27,6	68,6	72,4	30,5	30,3	160,0	165,8	105,5	110,8	38,2	39,3	16,3	15,7
E	79,9	86,6	5,9	10,9	28,2	31,1	45,9	44,6	44,4	44,6	14,4	12,7	21,4	24,3	8,6	7,6
F	100,1	113,3	34,3	39,5	42,2	48,7	23,6	25,1	29,6	33,2	18,1	20,8	8,0	8,9	3,6	3,5
IRL	48,0	50,8	1,5	1,7	28,4	31,2	18,1	17,9	4,3	4,5	4,1	4,3	0,2	0,2	0,0	0,0
I	128,6	160,1	49,6	70,0	49,7	61,8	29,3	28,3	63,0	75,2	40,8	50,3	19,1	21,7	3,1	3,2
L	0,4	0,5	0,3	0,3	0,2	0,2	0,0	0,0	0,2	0,2	0,2	0,1	0,0	0,0	0,0	0,0
NL	19,7	21,5	3,4	3,1	12,1	13,6	4,2	4,9	4,0	2,7	3,3	2,2	0,4	0,3	0,3	0,2
A	20,8	22,3	10,3	11,9	10,1	10,1	0,4	0,3	0,0	0,0	0,0	0,0	0,0	0,0	0,0	0,0
P	69,8	77,5	40,8	46,9	22,4	24,0	6,6	6,6	58,8	67,3	48,9	56,8	8,9	9,5	1,0	1,0
FIN	3,5	4,7	1,8	1,7	1,5	2,9	0,3	0,2	0,8	0,9	0,7	0,8	0,1	0,1	0,0	0,0
S	9,1	10,0	1,9	2,0	6,3	7,0	0,9	1,0	0,0	0,0	0,0	0,0	0,0	0,0	0,0	0,0
UK	91,4	98,4	5,5	5,4	29,4	35,3	56,6	57,7	11,0	12,0	9,7	10,6	1,2	1,3	0,1	0,1
	Number of animals (1000)								Number of animals (1000)							
EU-15	98195,3	93823,2	1073,3	1255,4	11878,2	13062,9	85243,8	79504,9	12353,7	11756,2	893,9	951,8	3071,4	3276,5	8388,4	7528,0
B	154,7	157,7	9,8	10,7	73,9	79,7	71,0	67,3	12,3	9,1	2,6	1,8	3,4	2,9	6,3	4,3
DK	142,4	145,2	7,0	8,0	66,7	76,5	68,7	60,7	0,0	0,0	0,0	0,0	0,0	0,0	0,0	0,0
D	2315,0	2335,0	176,0	200,0	584,0	619,0	1555,0	1516,0	0,0	0,0	0,0	0,0	0,0	0,0	0,0	0,0
EL	9515,7	9597,9	119,4	121,7	2684,7	2876,2	6711,6	6600,0	5878,0	5846,7	359,7	388,1	1160,6	1202,2	4357,7	4256,4
E	24857,1	21301,6	32,8	53,9	1240,9	1256,9	23583,4	19990,8	3006,7	2465,5	75,6	53,3	720,3	758,1	2210,9	1654,1
F	9824,2	10056,0	169,7	194,3	1362,1	1565,8	8292,4	8295,9	1111,0	1083,9	56,0	63,8	295,0	324,9	760,0	695,2
IRL	5634,1	5583,1	8,0	9,0	1349,8	1422,3	4276,3	4151,8	11,7	12,7	7,6	8,3	4,1	4,4	0,0	0,0
I	10889,6	10689,7	205,6	278,1	1458,8	1872,6	9225,2	8539,0	1346,7	1372,8	143,1	168,5	523,5	605,6	680,0	598,7
L	5,0	5,1	1,2	1,3	3,8	3,7	0,0	0,0	0,8	0,6	0,5	0,3	0,3	0,2	0,0	0,0
NL	1465,4	1670,9	16,0	15,6	524,1	604,4	925,3	1050,9	118,5	76,1	9,9	6,6	9,2	7,1	99,4	62,4
A	383,7	365,3	46,0	52,0	264,6	250,8	73,1	62,5	0,0	0,0	0,0	0,0	0,0	0,0	0,0	0,0
P	3414,0	3427,8	248,7	274,8	802,0	836,2	2363,3	2316,8	785,0	799,1	209,3	229,2	325,0	338,0	250,7	231,9
FIN	102,9	114,5	7,6	9,0	52,0	76,1	43,3	29,4	6,5	5,5	2,5	2,0	3,8	2,9	0,2	0,6
S	0,4	0,5	0,0	0,0	0,2	0,2	0,2	0,2	0,0	0,0	0,0	0,0	0,0	0,0	0,0	0,0
UK	29491,0	28373,0	25,5	26,9	1410,6	1522,5	28054,9	26823,7	76,5	84,4	27,1	29,8	26,2	30,2	23,2	24,4

Further information:

➤ Databases

New Cronos ZPA 1
Domain struct

To obtain information or to order publications, data bases and special sets of data, please contact the **Data Shop** network:

BELGIQUE/BELGIË	DANMARK	DEUTSCHLAND	ESPAÑA	FRANCE	ITALIA – Roma
Eurostat Data Shop Bruxelles/Brussel Chaussée d'Etterbeek 13 Etterbeeksesteenweg 13 B-1049 BRUXELLES / BRUSSEL Tel. (32-2) 299 66 66 Fax (32-2) 295 01 25 E-Mail: datashop.brussels@eurostat.cec.be	DANMARKS STATISTIK Bibliotek og Information Eurostat Data Shop Sejrøgade 11 DK-2100 KØBENHAVN Ø Tel. (45-39) 17 30 30 Fax (45-39) 17 30 03 E-Mail: bib@dst.dk	STATISTISCHES BUNDESAMT Eurostat Data Shop Berlin Otto-Braun-Straße 70-72 D-10178 BERLIN Tel. (49-30) 23 24 64 27/28 Fax (49-30) 23 24 64 30 E-Mail: siba-berlin.datashop@t-online.de	INE Eurostat Data Shop Paseo de la Castellana, 183 Oficina 009 Entrada por Estébanez Calderón E-28046 MADRID Tel. (34-91) 583 91 67 Fax (34-91) 579 71 20 E-Mail: datashop.eurostat@ine.es	INSEE Info Service Eurostat Data Shop 195, rue de Bercy Tour Gamma A F-75582 PARIS CEDEX 12 Tel. (33-1) 53 17 88 44 Fax (33-1) 53 17 88 22 E-Mail: datashop@insee.fr	ISTAT Centro di Informazione Statistica Sede di Roma, Eurostat Data Shop Via Cesare Balbo, 11a I-00184 ROMA Tel. (39-06) 46 73 31 05/02 Fax (39-06) 46 73 31 07/01 E-Mail: dipdiff@istat.it
ITALIA – Milano	LUXEMBOURG	NEDERLAND	NORGE	PORTUGAL	SCHWEIZ/SUISSE/SVIZZERA
ISTAT Centro di Informazione Statistica – Sede di Milano, Eurostat Data Shop Piazza della Repubblica, 22 I-20124 MILANO Tel. (39-02) 65 95 133/134 Fax (39-02) 65 30 75 E-mail: mileuro@tin.it	Eurostat Data Shop Luxembourg BP 453 L-2014 LUXEMBOURG 4, rue A. Weicker L-2721 LUXEMBOURG Tel. (352) 43 35 22 51 Fax (352) 43 35 22 221 E-Mail: dslux@eurostat.datashop.lu	STATISTICS NETHERLANDS Eurostat Data Shop-Voorburg po box 4000 2270 JM VOORBURG Nederland Tel. (31-70) 337 49 00 Fax (31-70) 337 59 84 E-Mail: datashop@cbs.nl	Statistics Norway Library and Information Centre Eurostat Data Shop Kongens gate 6 P. b. 8131, dep. N-0033 OSLO Tel. (47-22) 86 46 43 Fax (47-22) 86 45 04 E-Mail: biblioteket@ssb.no	Eurostat Data Shop Lisboa INE/Serviço de Difusão Av. António José de Almeida, 2 P-1000-043 LISBOA Tel. (351-1) 842 61 00 Fax (351-1) 842 63 64 E-Mail: data.shop@ine.pt	Statistisches Amt des Kantons Zürich, Eurostat Data Shop Bleicherweg 5 CH-8090 Zürich Tel. (41-1) 225 12 12 Fax (41-1) 225 12 99 E-Mail: datashop@zh.ch Internetadresse: http://www.zh.ch/statistik
SUOMI/FINLAND	SVERIGE	UNITED KINGDOM	UNITED KINGDOM	UNITED STATES OF AMERICA	
Eurostat Data Shop, Tilastokirjasto Postiosoite: PL 2B FIN-00022 Tilastokeskus Kayntiosoite: Työpajakatu 13 B, 2 krs Helsinki Tel. (358-9) 17 34 22 21 Fax (358-9) 17 34 22 79 S-posti datashop.tilastokeskus@tilastokeskus.fi Internetadresse: http://www.tilastokeskus.fi/ttk/datashop.html	STATISTICS SWEDEN Information service Eurostat Data Shop Karlavägen 100 Box 24 300 S-104 51 STOCKHOLM Tel. (46-8) 783 48 01 Fax (46-8) 783 48 99 E-Mail: infoservice@scb.se	Eurostat Data Shop Enquiries & advice and publications Office for National Statistics Customers & Electronic Services Unit 1 Drummond Gate - B1/05 UK-LONDON SW1V 2QQ Tel. (44-171) 533 56 76 Fax (44-171) 533 56 88 E-Mail: gloria.ryan@ons.gov.uk	Eurostat Data Shop Electronic Data Extractions, Enquiries & advice - R.CADE Unit 1L Mountjoy Research Centre University of Durham UK - DURHAM DH1 3SW Tel. (44-191) 374 7350 Fax: (44-191) 384 4971 E-Mail: r.cade@dur.ac.uk URL: http://www.rcade.dur.ac.uk	HAVER ANALYTICS Eurostat Data Shop 60 East 42nd Street Suite 3310 USA-NEW YORK, NY 10165 Tel. (1-212) 986 93 00 Fax (1-212) 986 58 57 E-Mail: eurodata@haver.com	

Media Support Eurostat (for professional journalists only).

Bech Building Office A3/48 • L-2920 Luxembourg • Tel. (352) 4301 33408 • Fax (352) 4301 32649 • e-mail: media.support@eurostat.cec.be

For information on methodology Albert JERABEK, Eurostat/F2, L-2920 Luxembourg, Tel (352) 4301 37250, Fax (352) 4301 37318, e-mail: albert.jerabek@eurostat.cec.be
Analysis by Marie STOLBOVA
ORIGINAL: English

Please visit our web site at <http://europa.eu.int/eurostat.html> for further information!

A list of worldwide sales outlets is available at the **Office for Official Publications of the European Communities**.

2 rue Mercier - L-2985 Luxembourg
Tel. (352) 2929 42118 Fax (352) 2929 42709
Internet Address <http://eur-op.eu.int/fr/general/s-ad.htm>
e-mail: info.info@opoce.cec.be

BELGIQUE/BELGIË - DANMARK - DEUTSCHLAND - GREECE/ELLADA - ESPAÑA - FRANCE - IRELAND - ITALIA - LUXEMBOURG - NEDERLAND - ÖSTERREICH
PORTUGAL - SUOMI/FINLAND - SVERIGE - UNITED KINGDOM - ISLAND - NORGE - SCHWEIZ/SUISSE/SVIZZERA - BALGARIA - ČESKÁ REPUBLIKA - CYPRUS
EESTI - HRVATSKA - MAGYARORSZÁG - MALTA - POLSKA - ROMÂNIA - RUSSIA - SLOVAKIA - SLOVENIA - TÜRKIYE - AUSTRALIA - CANADA - EGYPT - INDIA
ISRAEL - JAPAN - MALAYSIA - PHILIPPINES - SOUTH KOREA - THAILAND - UNITED STATES OF AMERICA

Order form

I would like to subscribe to Statistics in focus (from 1.1.1999 to 31.12.1999):
(for the Data Shop and sales office addresses see above)

Formula 1: All 9 themes (approximately 90 issues)

Paper: 360 EUR

PDF: 264 EUR

Paper + PDF: 432 EUR

Language required: DE EN FR

Formula 2: One or more of the following seven themes:

Theme 1 'General statistics'

Paper: 42 EUR PDF: 30 EUR Combined: 54 EUR

Theme 2 'Economy and finance'

Theme 3 'Population and social conditions'

Theme 4 'Industry, trade and services'

Theme 5 'Agriculture and fisheries'

Theme 6 'External trade'

Theme 8 'Environment and energy'

Paper: 84 EUR PDF: 60 EUR Combined: 114 EUR

Language required: DE EN FR

Please send me a free copy of 'Eurostat Mini-Guide' (catalogue containing a selection of Eurostat products and services)

Language required: DE EN FR

I would like a free subscription to 'Statistical References', the information letter on Eurostat products and services

Language required: DE EN FR

Mr Mrs Ms

(Please use block capitals)

Name: _____ First name: _____

Company: _____ Department: _____

Function: _____

Address: _____

Post code: _____ Town: _____

Country: _____

Tel.: _____ Fax: _____

E-mail: _____

Payment on receipt of invoice, preferably by:

Bank transfer

Visa Eurocard

Card No: _____ Expires on: ____/____/____

Please confirm your intra-Community VAT number:

If no number is entered, VAT will be automatically applied. Subsequent reimbursement will not be possible.