

Harmonized Indices of Consumer Prices

December 2006

Statistics in focus

ECONOMY AND FINANCE

17/2007

Prices

Author

Christine WIRTZ

Contents

Price Indices.....	2
Rates of Change.....	4
EEA Index Numbers and Rates of Change.....	6
COICOP/HICP Main categories.....	7

Euro area¹ annual inflation, as measured by the Monetary Union Index of Consumer Prices (MUICP), was 1.9% in December 2006², unchanged compared to November. A year earlier the rate was 2.2%.

EU annual inflation, as measured by the European Index of Consumer Prices (EICP)³, was 2.1% in December 2006, unchanged compared to November 2006. A year earlier the rate was 2.1%.

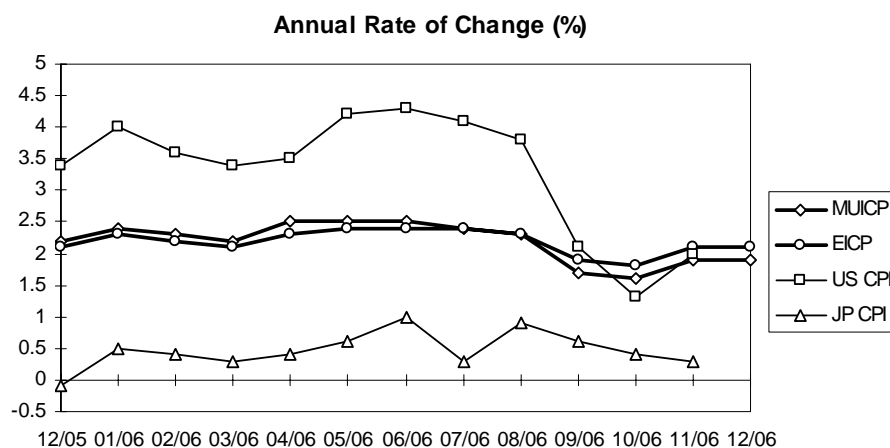
EEA annual inflation, as measured by the European Economic Area Index of Consumer Prices (EEAICP), was 2.1% in December 2006.

In December 2006, the highest annual inflation rates in the then 25 EU Member States were recorded in **Latvia** (6.8%), **Hungary** (6.6%) and **Estonia** (5.1%), and the lowest rates were observed in **Malta** (0.8%), **Finland** (1.2%), **Germany**, **Poland** and **Sweden** (1.4% each).

For the **USA**⁴ and **Japan**⁴ no December data was available in time for publication.

The annual inflation rates for the **euro area**, the **EU** and the latest available rates for the **USA** and **Japan** are shown in the graph below.

Methodological notes can be accessed via the Eurostat internet site under Special topics/HICP/Methodology – [Short guide for users](#) (issue date: 17/05/2004).



1 The euro area includes: Belgium, Germany, Ireland, Greece, Spain, France, Italy, Luxembourg, the Netherlands, Austria, Portugal, Finland until December 2006. Slovenia will be included in the calculation of euro area inflation for January 2007.

2 December 2006 data for Ireland were not available in time for publication. Eurostat estimates have been used to compute euro area, EU and EEA totals.

In October 2006, Italy changed its price collection period. Figures from October 2006 onwards may be subject to revision.

3 The EICP (EICP='European Index of Consumer Prices' as defined in Council Regulation (EC) No 2494/95 of 23 October 1995) is the official EU aggregate. It covers 15 Member States until April 2004, 25 Member States starting from May 2004 and 27 Member States from January 2007. New Member States are integrated into the EICP using a chain index formula. Bulgaria and Romania have been Member States of the EU since 1 January 2007 and will be included in the calculation of the EU inflation for January 2007.

4 For the USA and Japan the national CPIs are given, which are not strictly comparable with the HICPs.

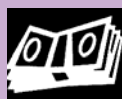


TABLE I
HARMONIZED INDICES OF CONSUMER PRICES
INDEX NUMBERS 2005 = 100

	Euro area	EICP	BE	BG	CZ	DK	DE	EE	IE	EL	ES	FR	IT	CY
Annual Average Index														
2004	97.86	97.88	97.53	95.20	98.4	98.3	98.1	96.05	97.9	96.63	96.73	98.14	97.8	98.00
2005	100.00	100.00	100.00	100.00	100.0	100.0	100.0	100.00	100.0	100.00	100.00	100.00	100.0	100.00
2006	102.18p	102.20p	102.33	107.26	102.1	101.8	101.8	104.45	:	103.31	103.56	101.91	102.2	102.25
Monthly Index - 2004														
Jan	96.45	96.51	95.05	94.79	97.7	97.4	97.0	93.65	95.9	94.71	94.44	96.79	96.2	95.55
Feb	96.62	96.69	96.84	95.12	97.8	97.8	97.2	93.85	96.8	94.05	94.52	97.22	96.1	95.55
Mar	97.29	97.28	96.92	95.05	98.0	98.3	97.7	94.18	97.2	96.74	95.22	97.65	97.1	96.42
Apr	97.72	97.69	97.44	95.32	98.0	98.4	97.9	94.77	97.5	97.10	96.55	97.91	97.9	97.13
May	98.05	98.08	97.78	95.35	98.6	98.8	98.1	96.62	97.7	97.54	97.09	98.26	98.0	97.99
Jun	98.05	98.09	97.69	93.66	98.8	98.5	98.1	96.95	98.2	97.32	97.25	98.35	98.2	98.62
Jul	97.88	97.92	96.67	94.80	99.0	98.2	98.5	96.69	97.8	95.43	96.55	98.17	98.0	97.36
Aug	98.05	98.06	98.29	94.38	99.0	97.8	98.6	96.62	98.4	95.14	97.01	98.35	97.8	97.84
Sep	98.22	98.23	98.20	95.27	98.3	98.6	98.3	96.82	98.5	97.18	97.17	98.43	98.3	98.86
Oct	98.56	98.57	98.71	95.43	98.8	99.0	98.5	97.15	98.6	97.90	98.18	98.78	98.6	99.88
Nov	98.48	98.53	98.54	96.02	98.6	98.7	98.1	97.54	98.8	97.98	98.42	98.78	98.8	100.28
Dec	98.90	98.92	98.20	97.23	98.6	98.4	99.2	97.74	98.9	98.49	98.34	98.95	99.1	100.51
Monthly Index - 2005														
Jan	98.31	98.42	96.92	97.95	99.2	98.2	98.6	97.54	97.9	98.70	97.40	98.35	98.1	98.23
Feb	98.65	98.73	99.06	98.80	99.2	98.8	99.0	98.14	98.8	97.03	97.64	99.04	98.0	97.84
Mar	99.32	99.32	99.65	99.12	99.1	99.6	99.3	98.73	99.0	99.50	98.49	99.73	99.2	98.70
Apr	99.75	99.73	99.82	100.18	99.4	100.1	99.3	99.19	99.6	100.30	99.90	99.91	100.0	99.80
May	100.00	100.00	99.99	99.70	99.5	100.0	99.7	99.39	99.8	100.67	100.05	99.91	100.3	100.04
Jun	100.08	100.08	100.33	98.41	100.1	100.2	99.9	100.05	100.1	100.45	100.36	100.08	100.3	100.12
Jul	100.00	100.02	99.31	98.50	100.4	100.0	100.3	100.45	100.0	99.14	99.74	99.91	100.1	98.62
Aug	100.25	100.26	101.10	99.07	100.4	100.1	100.5	100.71	100.5	98.56	100.21	100.34	99.9	99.33
Sep	100.76	100.71	101.10	100.46	100.3	100.9	100.8	101.57	101.2	100.88	100.83	100.77	100.5	100.98
Oct	101.02	100.95	100.93	101.65	101.2	100.9	100.8	101.50	101.2	101.54	101.61	100.77	101.2	102.09
Nov	100.76	100.75	100.85	102.65	100.8	100.5	100.3	101.43	101.0	101.32	101.77	100.51	101.2	102.32
Dec	101.10	101.03	100.93	103.50	100.5	100.6	101.3	101.30	100.8	101.90	102.00	100.69	101.2	101.93
Monthly Index - 2006														
Jan	100.66	100.64	99.60	104.33	101.6	100.2	100.7	102.08	100.3	101.67	101.53	100.60	100.3	100.22
Feb	100.95	100.93	101.88	107.48	101.6	100.9	101.1	102.60	101.5	100.07	101.60	100.99	100.2	100.13
Mar	101.53	101.41	101.81	107.78	101.5	101.4	101.2	102.71	101.8	102.82	102.32	101.44	101.4	101.31
Apr	102.20	102.07	102.38	108.26	101.7	101.9	101.6	103.44	102.3	103.84	103.80	101.89	102.3	102.34
May	102.48	102.42	102.74	108.22	102.3	102.1	101.8	104.00	102.8	103.96	104.17	102.32	102.6	102.54
Jun	102.56	102.53	102.82	106.52	102.4	102.3	101.9	104.48	103.0	103.90	104.33	102.32	102.7	102.75
Jul	102.43	102.43	101.72	106.03	102.8	102.0	102.4	104.94	102.9	103.02	103.76	102.13	102.4	101.42
Aug	102.52	102.60	103.47	105.79	103.0	102.0	102.3	105.70	103.7	101.96	103.99	102.46	102.2	102.04
Sep	102.52	102.65	102.98	106.11	102.5	102.4	101.8	105.45	103.4	104.05	103.79	102.26	102.9	103.25
Oct	102.60	102.74	102.68	107.44	102.0	102.3	101.9	105.34	103.4	104.73	104.22	102.02	103.1	103.81
Nov	102.64	102.82	102.90	108.96	101.8	102.3	101.8	106.15	103.4	104.57	104.47	102.14	103.2	103.70
Dec	103.04p	103.20p	103.03	110.22	102.0	102.3	102.7	106.45	:	105.16	104.77	102.39	103.3	103.43

p provisional : not available

TABLE I
HARMONIZED INDICES OF CONSUMER PRICES
2005 = 100 INDEX NUMBERS

LV	LT	LU	HU	MT	NL	AT	PL	PT	RO	SI	SK	FI	SE	UK	
Annual Average Index															
93.55	97.41	96.37	96.63	97.53	98.52	97.94	97.9	97.92	91.68	97.60	97.28	99.24	99.18	98.0	2004
100.00	100.00	100.00	100.00	100.00	100.00	100.00	100.0	100.00	100.00	100.00	100.00	100.00	100.00	100.0	2005
106.57	103.79	102.96	104.03	102.58	101.65p	101.69	101.3	103.04	106.60	102.54	104.26	101.28	101.50	102.3	2006
Monthly Index - 2004															
90.36	95.77	94.02	94.41	94.26	97.33	96.80	95.8	96.40	88.42	95.58	96.09	99.01	98.36	97.0	Jan
90.92	95.61	95.24	95.47	94.33	97.89	97.23	95.9	96.24	88.98	95.75	96.73	99.45	98.18	97.2	Feb
91.82	96.09	95.32	95.97	94.72	98.69	97.58	96.2	96.48	89.42	96.32	96.95	99.01	99.06	97.4	Mar
92.37	96.41	95.81	96.25	98.70	99.01	97.49	96.9	97.42	89.94	96.94	96.95	99.01	99.32	97.8	Apr
93.55	97.93	96.29	97.12	98.86	99.18	97.84	98.0	98.20	90.20	97.79	97.27	99.19	99.67	98.1	May
94.10	98.01	96.70	97.17	99.17	98.45	98.02	98.6	99.37	90.73	98.24	97.48	99.10	99.15	98.1	Jun
94.31	97.93	95.89	97.17	99.64	98.13	97.75	98.5	98.51	91.89	98.75	97.65	98.84	98.97	97.8	Jul
94.24	97.61	96.94	96.85	99.17	98.29	98.10	98.2	98.12	92.39	98.47	97.54	99.10	98.88	98.1	Aug
94.66	98.17	97.10	96.94	99.64	99.10	98.02	98.5	98.04	93.26	98.07	97.65	99.53	99.67	98.2	Sep
95.00	98.33	97.59	97.40	99.64	99.26	98.54	99.1	98.51	94.40	98.18	97.81	99.88	100.11	98.4	Oct
95.49	98.57	97.92	97.45	95.66	98.85	98.71	99.4	98.82	95.02	98.75	97.70	99.36	99.41	98.6	Nov
95.77	98.49	97.67	97.40	96.60	98.05	99.15	99.4	98.90	95.56	98.30	97.54	99.36	99.41	99.1	Dec
Monthly Index - 2005															
96.39	98.49	96.70	98.14	96.05	98.53	99.15	99.4	98.35	96.33	97.79	99.20	98.84	98.88	98.6	Jan
97.29	98.65	98.32	98.69	96.67	99.34	99.50	99.4	98.27	96.92	98.47	99.31	99.45	99.32	98.8	Feb
97.85	99.21	98.65	99.15	97.14	100.14	99.93	99.5	98.67	97.21	99.48	99.31	99.88	99.58	99.3	Mar
98.89	99.53	99.38	99.88	100.65	100.30	99.76	99.9	99.37	98.97	99.54	99.53	100.15	99.76	99.7	Apr
99.65	99.77	99.86	100.48	101.27	100.22	99.76	100.1	99.92	99.26	99.88	99.63	99.80	99.85	100.0	May
100.27	99.93	99.78	100.76	101.27	99.90	100.02	100.0	99.99	99.56	99.93	100.01	100.06	99.93	100.0	Jun
100.27	99.77	99.70	100.67	101.35	99.58	99.76	100.0	100.38	100.53	100.72	99.69	99.71	99.67	100.1	Jul
100.13	99.85	101.08	100.21	101.66	99.90	99.93	100.0	100.54	100.64	100.22	99.63	100.06	99.93	100.4	Aug
101.66	100.65	101.65	100.39	101.66	100.78	100.55	100.4	100.70	101.23	101.18	99.90	100.67	100.72	100.6	Sep
102.35	101.30	102.46	100.44	102.60	100.78	100.55	100.7	101.09	102.10	101.35	101.24	100.67	100.98	100.7	Oct
102.70	101.38	101.41	100.62	99.79	100.46	100.37	100.5	101.32	103.33	100.78	101.24	100.32	100.63	100.7	Nov
102.56	101.46	101.00	100.58	99.87	100.06	100.72	100.2	101.40	103.90	100.67	101.30	100.41	100.72	101.0	Dec
Monthly Index - 2006															
103.67	101.98	100.63	100.55	98.31	100.28	100.66	100.3	101.01	104.96	100.32	103.23	100.00	100.01	100.5	Jan
104.09	102.03	102.13	100.92	98.93	100.78	100.99	100.3	101.21	105.21	100.70	103.56	100.77	100.37	100.9	Feb
104.29	102.24	102.31	101.51	100.00	101.58	101.26	100.4	102.42	105.43	101.43	103.57	101.08	101.03	101.1	Mar
104.96	102.94	102.81	102.27	104.16	102.06	101.84	101.1	103.01	105.88	102.34	103.90	101.61	101.58	101.7	Apr
106.69	103.39	103.43	103.37	104.83	102.02	101.86	101.6	103.57	106.52	103.27	104.41	101.52	101.78	102.2	May
106.58	103.66	103.70	103.66	104.57	101.68	101.88	101.5	103.52	106.69	102.96	104.55	101.54	101.78	102.5	Jun
107.22	104.18	103.08	103.85	104.96	101.32	101.72	101.4	103.38	106.81	102.66	104.68	101.07	101.44	102.5	Jul
106.96	104.12	104.23	104.91	104.66	101.81	102.03	101.7	103.29	106.74	103.35	104.57	101.37	101.48	102.9	Aug
107.67	103.98	103.65	106.33	104.86	102.30	101.89	101.8	103.71	106.80	103.68	104.36	101.47	101.97	103.0	Sep
108.09	105.02	103.08	106.81	104.30	102.12	101.82	101.8	103.73	107.02	102.91	104.38	101.62	102.17	103.2	Oct
109.15	105.84	103.19	107.04	100.71	102.10	101.95r	101.8	103.74	108.19	103.23	104.94	101.62	102.18	103.4	Nov
109.49	106.07	103.28	107.17	100.62	101.75p	102.33	101.6	103.93	108.99	103.67	105.01	101.65	102.16	104.0	Dec

p provisional r revised

TABLE II
HARMONIZED INDICES OF CONSUMER PRICES
 RATES OF CHANGE (%)

	Euro area	EICP	BE	BG	CZ	DK	DE	EE	IE	EL	ES	FR	IT	CY
Annual Average Rate of Change														
2003/12	2.1	2.0	1.5	2.3	-0.1	2.0	1.0	1.4	4.0	3.4	3.1	2.2	2.8	4.0
2004/12	2.1	2.0	1.9	6.1	2.6	0.9	1.8	3.0	2.3	3.0	3.1	2.3	2.3	1.9
2005/12	2.2	2.2	2.5	5.0	1.6	1.7	1.9	4.1	2.2	3.5	3.4	1.9	2.2	2.0
2006/12	2.2p	2.2p	2.3	7.3	2.1	1.9	1.8	4.4	:	3.3	3.6	1.9	2.2	2.2
Annual Rate of Change - 2004														
Jan	1.9	1.8	1.4	6.4	2.0	0.9	1.1	0.6	2.2	3.1	2.3	2.2	2.1	1.6
Feb	1.6	1.5	1.2	6.6	2.0	0.6	0.8	0.6	2.2	2.6	2.2	1.9	2.5	1.4
Mar	1.7	1.5	1.0	6.1	2.2	0.4	1.1	0.7	1.9	2.9	2.2	1.9	2.3	0.1
Apr	2.0	1.8	1.7	6.1	2.0	0.5	1.7	1.5	1.7	3.1	2.7	2.4	2.3	0.1
May	2.5	2.3	2.4	6.8	2.6	1.1	2.1	3.7	2.1	3.1	3.4	2.8	2.3	1.2
Jun	2.4	2.3	2.0	7.3	2.7	0.8	2.0	4.4	2.5	3.0	3.5	2.7	2.4	2.4
Jul	2.3	2.2	2.1	7.6	3.0	1.1	2.1	4.0	2.5	3.1	3.3	2.6	2.3	2.9
Aug	2.3	2.1	2.0	6.3	3.1	0.8	2.1	3.9	2.5	2.8	3.3	2.5	2.4	2.8
Sep	2.1	2.0	1.8	6.3	2.8	0.9	2.0	3.8	2.4	2.9	3.2	2.2	2.2	1.8
Oct	2.4	2.2	2.7	5.8	3.1	1.5	2.3	4.0	2.5	3.3	3.6	2.3	2.1	2.0
Nov	2.2	2.1	2.3	4.5	2.6	1.0	2.0	4.4	2.7	3.2	3.5	2.2	2.1	2.6
Dec	2.4	2.2	1.9	4.0	2.5	0.9	2.3	4.8	2.4	3.1	3.3	2.3	2.4	3.9
Annual Rate of Change - 2005														
Jan	1.9	2.0	2.0	3.3	1.5	0.8	1.6	4.2	2.1	4.2	3.1	1.6	2.0	2.8
Feb	2.1	2.1	2.3	3.9	1.4	1.0	1.9	4.6	2.1	3.2	3.3	1.9	2.0	2.4
Mar	2.1	2.1	2.8	4.3	1.1	1.3	1.6	4.8	1.9	2.9	3.4	2.1	2.2	2.4
Apr	2.1	2.1	2.4	5.1	1.4	1.7	1.4	4.7	2.2	3.3	3.5	2.0	2.1	2.7
May	2.0	2.0	2.3	4.6	0.9	1.2	1.6	2.9	2.1	3.2	3.0	1.7	2.3	2.1
Jun	2.1	2.0	2.7	5.1	1.3	1.7	1.8	3.2	1.9	3.2	3.2	1.8	2.1	1.5
Jul	2.2	2.1	2.7	3.9	1.4	1.8	1.8	3.9	2.2	3.9	3.3	1.8	2.1	1.3
Aug	2.2	2.2	2.9	5.0	1.4	2.4	1.9	4.2	2.1	3.6	3.3	2.0	2.1	1.5
Sep	2.6	2.5	3.0	5.4	2.0	2.3	2.5	4.9	2.7	3.8	3.8	2.4	2.2	2.1
Oct	2.5	2.4	2.2	6.5	2.4	1.9	2.3	4.5	2.6	3.7	3.5	2.0	2.6	2.2
Nov	2.3	2.3	2.3	6.9	2.2	1.8	2.2	4.0	2.2	3.4	3.4	1.8	2.4	2.0
Dec	2.2	2.1	2.8	6.4	1.9	2.2	2.1	3.6	1.9	3.5	3.7	1.8	2.1	1.4
Annual Rate of Change - 2006														
Jan	2.4	2.3	2.8	6.5	2.4	2.0	2.1	4.7	2.5	3.0	4.2	2.3	2.2	2.0
Feb	2.3	2.2	2.8	8.8	2.4	2.1	2.1	4.5	2.7	3.1	4.1	2.0	2.2	2.3
Mar	2.2	2.1	2.2	8.7	2.4	1.8	1.9	4.0	2.8	3.3	3.9	1.7	2.2	2.6
Apr	2.5	2.3	2.6	8.1	2.3	1.8	2.3	4.3	2.7	3.5	3.9	2.0	2.3	2.5
May	2.5	2.4	2.8	8.5	2.8	2.1	2.1	4.6	3.0	3.3	4.1	2.4	2.3	2.5
Jun	2.5	2.4	2.5	8.2	2.3	2.1	2.0	4.4	2.9	3.4	4.0	2.2	2.4	2.6
Jul	2.4	2.4	2.4	7.6	2.4	2.0	2.1	4.5	2.9	3.9	4.0	2.2	2.3	2.8
Aug	2.3	2.3	2.3	6.8	2.6	1.9	1.8	5.0	3.2	3.4	3.8	2.1	2.3	2.7
Sep	1.7	1.9	1.9	5.6	2.2	1.5	1.0	3.8	2.2	3.1	2.9	1.5	2.4	2.2
Oct	1.6	1.8	1.7	5.7	0.8	1.4	1.1	3.8	2.2	3.1	2.6	1.2	1.9	1.7
Nov	1.9	2.1	2.0	6.1	1.0	1.8	1.5	4.7	2.4	3.2	2.7	1.6	2.0	1.3
Dec	1.9p	2.1p	2.1	6.5	1.5	1.7	1.4	5.1	:	3.2	2.7	1.7	2.1	1.5

p provisional : not available

TABLE II
HARMONIZED INDICES OF CONSUMER PRICES
RATES OF CHANGE (%)

LV	LT	LU	HU	MT	NL	AT	PL	PT	RO	SI	SK	FI	SE	UK	
Annual Average Rate of Change															
2.9	-1.1	2.5	4.7	1.9	2.2	1.3	0.7	3.3	15.3	5.7	8.4	1.3	2.3	1.4	2003/12
6.2	1.2	3.2	6.8	2.7	1.4	2.0	3.6	2.5	11.9	3.7	7.5	0.1	1.0	1.3	2004/12
6.9	2.7	3.8	3.5	2.5	1.5	2.1	2.2	2.1	9.1	2.5	2.8	0.8	0.8	2.1	2005/12
6.6	3.8	3.0	4.0	2.6	1.7p	1.7	1.3	3.0	6.6	2.5	4.3	1.3	1.5	2.3	2006/12
Annual Rate of Change - 2004															
4.0	-1.2	2.3	6.7	2.8	1.5	1.2	1.8	2.2	13.9	4.0	8.3	0.8	1.3	1.4	Jan
4.3	-1.2	2.5	7.0	2.5	1.3	1.5	1.8	2.1	13.7	3.6	8.4	0.4	0.1	1.3	Feb
4.7	-0.9	2.0	6.6	2.1	1.2	1.5	1.8	2.2	13.1	3.5	8.0	-0.4	0.4	1.1	Mar
5.0	-0.7	2.7	7.0	3.6	1.5	1.5	2.3	2.4	12.5	3.6	7.9	-0.4	1.0	1.1	Apr
6.1	1.1	3.4	7.8	3.1	1.7	2.1	3.5	2.5	12.3	3.9	8.2	-0.1	1.5	1.5	May
6.1	1.1	3.8	7.5	3.2	1.5	2.3	4.2	3.7	12.0	3.9	8.2	-0.1	1.2	1.6	Jun
6.7	1.7	3.8	7.2	3.1	1.2	2.1	4.7	2.9	12.1	3.7	8.4	0.2	1.2	1.4	Jul
7.8	2.2	3.6	7.2	2.5	1.2	2.2	4.8	2.4	12.4	3.7	7.1	0.3	1.1	1.3	Aug
7.7	3.1	3.1	6.7	3.2	1.2	1.8	4.6	2.1	11.1	3.4	6.6	0.2	1.1	1.1	Sep
7.2	3.1	4.1	6.4	2.7	1.5	2.4	4.6	2.4	10.8	3.4	6.6	0.6	1.5	1.2	Oct
7.2	2.9	4.0	5.8	1.9	1.5	2.3	4.5	2.6	9.9	3.8	6.3	0.2	1.1	1.5	Nov
7.4	2.8	3.5	5.5	1.9	1.2	2.5	4.4	2.6	9.3	3.3	5.8	0.1	0.9	1.7	Dec
Annual Rate of Change - 2005															
6.7	2.8	2.9	4.0	1.9	1.2	2.4	3.8	2.0	8.9	2.3	3.2	-0.2	0.5	1.6	Jan
7.0	3.2	3.2	3.4	2.5	1.5	2.3	3.6	2.1	8.9	2.8	2.7	0.0	1.2	1.7	Feb
6.6	3.2	3.5	3.3	2.6	1.5	2.4	3.4	2.3	8.7	3.3	2.4	0.9	0.5	1.9	Mar
7.1	3.2	3.7	3.8	2.0	1.3	2.3	3.1	2.0	10.0	2.7	2.7	1.2	0.4	1.9	Apr
6.5	1.9	3.7	3.5	2.4	1.0	2.0	2.1	1.8	10.0	2.1	2.4	0.6	0.2	1.9	May
6.6	2.0	3.2	3.7	2.1	1.5	2.0	1.4	0.6	9.7	1.7	2.6	1.0	0.8	2.0	Jun
6.3	1.9	4.0	3.6	1.7	1.5	2.1	1.5	1.9	9.4	2.0	2.1	0.9	0.7	2.3	Jul
6.3	2.3	4.3	3.5	2.5	1.6	1.9	1.8	2.5	8.9	1.8	2.1	1.0	1.1	2.4	Aug
7.4	2.5	4.7	3.6	2.0	1.7	2.6	1.9	2.7	8.5	3.2	2.3	1.1	1.1	2.5	Sep
7.7	3.0	5.0	3.1	3.0	1.5	2.0	1.6	2.6	8.2	3.2	3.5	0.8	0.9	2.3	Oct
7.6	2.9	3.6	3.3	4.3	1.6	1.7	1.1	2.5	8.7	2.1	3.6	1.0	1.2	2.1	Nov
7.1	3.0	3.4	3.3	3.4	2.0	1.6	0.8	2.5	8.7	2.4	3.9	1.1	1.3	1.9	Dec
Annual Rate of Change - 2006															
7.6	3.5	4.1	2.5	2.4	1.8	1.5	0.9	2.7	9.0	2.6	4.1	1.2	1.1	1.9	Jan
7.0	3.4	3.9	2.3	2.3	1.4	1.5	0.9	3.0	8.6	2.3	4.3	1.3	1.1	2.0	Feb
6.6	3.1	3.7	2.4	2.9	1.4	1.3	0.9	3.8	8.5	2.0	4.3	1.2	1.5	1.8	Mar
6.1	3.4	3.5	2.4	3.5	1.8	2.1	1.2	3.7	7.0	2.8	4.4	1.5	1.8	2.0	Apr
7.1	3.6	3.6	2.9	3.5	1.8	2.1	1.5	3.7	7.3	3.4	4.8	1.7	1.9	2.2	May
6.3	3.7	3.9	2.9	3.3	1.8	1.9	1.5	3.5	7.2	3.0	4.5	1.5	1.9	2.5	Jun
6.9	4.4	3.4	3.2	3.6	1.7	2.0	1.4	3.0	6.2	1.9	5.0	1.4	1.8	2.4	Jul
6.8	4.3	3.1	4.7	3.0	1.9	2.1	1.7	2.7	6.1	3.1	5.0	1.3	1.6	2.5	Aug
5.9	3.3	2.0	5.9	3.1	1.5	1.3	1.4	3.0	5.5	2.5	4.5	0.8	1.2	2.4	Sep
5.6	3.7	0.6	6.3	1.7	1.3	1.3	1.1	2.6	4.8	1.5	3.1	0.9	1.2	2.4	Oct
6.3	4.4	1.8	6.4	0.9	1.6	1.6	1.3	2.4	4.7	2.4	3.7	1.3	1.5	2.7	Nov
6.8	4.5	2.3	6.6	0.8	1.7p	1.6	1.4	2.5	4.9	3.0	3.7	1.2	1.4	3.0	Dec

p provisional

TABLE III
HARMONIZED INDICES OF CONSUMER
PRICES
INDEX NUMBERS 2005 = 100

	EEA	IS	NO	CH**
Annual Average Index				
2004	97.89	98.64	98.5	98.8
2005	100.00	100.00	100.0	100.0
2006	102.21p	104.65	102.5	101.0
Monthly Index - 2004				
Jan	96.52	97.17	97.7	97.9
Feb	96.71	96.79	97.9	97.9
Mar	97.29	97.56	98.4	98.1
Apr	97.69	97.94	98.6	99.0
May	98.08	98.63	98.7	99.2
Jun	98.10	99.17	98.7	99.4
Jul	97.92	98.86	98.6	98.3
Aug	98.06	98.79	98.3	98.7
Sep	98.23	99.17	98.7	98.7
Oct	98.57	99.71	99.0	99.6
Nov	98.54	99.79	99.0	99.7
Dec	98.92	100.10	98.8	99.6
Monthly Index - 2005				
Jan	98.42	99.71	98.7	99.1
Feb	98.73	99.56	98.7	99.3
Mar	99.32	99.94	99.2	99.6
Apr	99.73	99.48	99.7	100.4
May	100.00	99.17	100.1	100.3
Jun	100.08	99.56	100.3	100.0
Jul	100.02	99.40	99.9	99.5
Aug	100.26	99.17	100.1	99.6
Sep	100.71	100.79	100.8	100.1
Oct	100.95	101.25	100.8	100.9
Nov	100.75	100.87	100.8	100.7
Dec	101.03	101.10	100.8	100.6
Monthly Index - 2006				
Jan	100.64	101.01	100.5	100.4
Feb	100.93	100.78	101.4	100.7
Mar	101.42	101.93	101.6	100.6
Apr	102.08	102.72	102.5	101.4
May	102.43	103.92	102.6	101.6
Jun	102.53	105.27	102.4	101.6
Jul	102.43	105.71	102.2	100.9
Aug	102.60	106.17	102.2	101.1
Sep	102.66	106.95	103.8	100.9
Oct	102.75	107.14	103.8	101.2
Nov	102.83	107.06	103.6	101.2
Dec	103.20p	107.08	103.0	101.2

TABLE IV
HARMONIZED INDICES OF CONSUMER
PRICES
RATES OF CHANGE (%)

EEA	IS	NO	CH**	
Annual Average Rate of Change				
2.0	1.4	2.0	0.6	2003/12
2.0	2.3	0.6	0.8	2004/12
2.2	1.4	1.5	1.2	2005/12
2.2p	4.6	2.5	1.1	2006/12
Annual Rate of Change - 2004				
1.7	1.5	-1.5	0.2	Jan
1.5	1.4	-1.5	0.1	Feb
1.5	1.0	-0.4	-0.1	Mar
1.8	1.5	0.5	0.6	Apr
2.3	2.3	1.1	0.9	May
2.3	2.8	1.3	1.1	Jun
2.2	2.7	1.6	0.8	Jul
2.1	3.1	1.1	1.0	Aug
2.0	2.7	1.1	0.8	Sep
2.2	2.9	1.4	1.3	Oct
2.1	2.9	1.4	1.5	Nov
2.2	2.9	1.2	1.4	Dec
Annual Rate of Change - 2005				
2.0	2.6	1.0	1.2	Jan
2.1	2.9	0.8	1.4	Feb
2.1	2.4	0.8	1.5	Mar
2.1	1.6	1.1	1.4	Apr
2.0	0.5	1.4	1.1	May
2.0	0.4	1.6	0.6	Jun
2.1	0.5	1.3	1.2	Jul
2.2	0.4	1.8	0.9	Aug
2.5	1.6	2.1	1.4	Sep
2.4	1.5	1.8	1.3	Oct
2.2	1.1	1.8	1.0	Nov
2.1	1.0	2.0	1.0	Dec
Annual Rate of Change - 2006				
2.3	1.3	1.8	1.3	Jan
2.2	1.2	2.7	1.4	Feb
2.1	2.0	2.4	1.0	Mar
2.4	3.3	2.8	1.1	Apr
2.4	4.8	2.5	1.4	May
2.4	5.7	2.1	1.6	Jun
2.4	6.3	2.3	1.4	Jul
2.3	7.1	2.1	1.5	Aug
1.9	6.1	3.0	0.8	Sep
1.8	5.8	3.0	0.3	Oct
2.1	6.1	2.8	0.5	Nov
2.1p	5.9	2.2	0.6	Dec

p provisional ** national CPI

TABLE V

MAIN CATEGORIES OF HARMONIZED INDICES OF CONSUMER PRICES

December 2006 / December 2005

ANNUAL RATES OF CHANGE (%)

	00.	01.	02.	03.	04.	05.	06.	07.	08.	09.	10.	11.	12.
Euro area	1.9p	2.6p	3.1p	0.9p	3.6p	1.2p	1.7p	1.3p	-2.3p	0.0p	3.5p	2.7p	2.3p
EICP	2.1p	3.0p	3.0p	-0.2p	4.9p	1.0p	2.0p	1.3p	-1.8p	-0.1p	6.0p	2.9p	2.6p
BE	2.1	4.3	1.2	0.6	4.0	1.3	1.1	0.7	-1.8	0.7	2.4	1.9	2.8
BG	6.5	5.2	57.3	4.9	3.0	3.4	1.8	1.4	-0.2	2.9	6.4	6.9	6.1
CZ	1.5	1.3	1.1	-4.8	4.5	-1.0	5.6	-0.8	2.1	-0.3	2.2	5.8	2.2
DK	1.7	4.7	0.7	-1.6	2.8	1.0	1.1	1.4	-1.6	-0.3	5.0	2.8	1.2
DE	1.4	2.5	3.9	0.3	2.5	0.4	1.0	0.7	-1.8	0.1	3.3	1.3	1.0
EE	5.1	6.4	4.1	3.0	15.0	3.1	3.8	2.0	-4.6	3.1	5.7	4.8	4.2
IE	:	:	:	:	:	:	:	:	:	:	:	:	:
EL	3.2	3.3	10.7	3.2	2.5	2.3	3.0	1.9	1.0	3.5	3.8	2.8	3.1
ES	2.7	3.2	1.4	1.3	4.9	2.6	1.7	1.8	-1.5	-0.6	4.4	4.4	4.1
FR	1.7	1.8	0.6	0.7	3.9	1.2	3.8	1.6	-1.2	-2.0	3.6	2.5	2.9
IT	2.1	2.7	5.0	1.5	4.9	1.6	-0.7	1.7	-4.8	1.9	2.4	2.6	2.6
CY	1.5	7.0	0.2	-2.3	1.1	-0.1	3.4	-1.4	-2.3	0.5	5.7	0.0	2.4
LV	6.8	9.6	7.9	1.7	14.0	3.6	6.0	2.0	-4.9	1.9	10.9	9.7	7.2
LT	4.5	8.1	1.5	-3.1	10.3	1.4	5.9	2.1	0.9	0.8	0.2	5.1	5.2
LU	2.3	3.3	3.3	0.4	4.3	1.9	3.3	0.9	-2.0	1.6	2.4	2.5	3.0
HU	6.6	13.0	8.4	1.1	13.3	0.0	4.1	2.5	-4.9	2.3	7.8	8.1	3.6
MT	0.8	3.3	0.5	-5.9	4.1	1.6	3.1	-2.5	0.4	0.6	2.7	1.0	2.1
NL	1.7p	2.1p	1.6p	1.5p	5.0p	0.5p	4.0p	0.6p	-5.1p	0.9p	1.1p	2.7p	0.5p
AT	1.6	2.6	1.2	-0.3	5.1	0.7	0.3	1.2	-1.2	-1.1	6.2	1.7	2.5
PL	1.4	1.9	1.6	-7.3	4.6	0.2	0.8	-1.4	0.5	-2.2	1.0	2.4	4.5
PT	2.5	3.0	9.1	-1.0	3.2	0.8	5.5	2.3	-1.3	0.1	4.0	2.4	3.8
RO	4.9	0.9	22.5	3.4	14.2	1.9	0.3	1.4	-5.0	3.0	6.6	5.7	3.9
SI	3.0	3.8	4.9	3.4	2.0	4.5	0.1	1.2	0.7	1.0	0.8	6.2	4.8
SK	3.7	3.4	6.2	0.1	8.9	0.2	10.6	-2.5	-4.6	2.0	3.6	2.7	3.9
FI	1.2	2.4	1.0	-2.3	2.9	0.6	0.1	-0.1	3.9	-0.3	1.6	2.4	2.8
SE	1.4	1.7	1.5	1.4	5.0	-1.6	1.0	-0.5	-6.5	0.6	3.6	2.7	2.5
UK	3.0	4.6	2.7	-4.1	11.4	0.6	3.9	2.1	0.5	-0.3	14.0	3.2	3.3
EEA	2.1p	3.0p	3.0p	-0.2p	4.9p	1.0p	2.0p	1.3p	-1.7p	-0.1p	6.0p	2.9p	2.6p
IS	5.9	8.7	4.4	0.2	6.9	7.0	4.1	6.9	-0.6	5.6	6.5	8.2	3.5
NO	2.2	1.7	2.3	-4.1	7.5	-0.5	3.3	2.2	4.4	0.9	2.4	3.8	-0.8

p provisional : not available

COICOP/HICP Code

- | | | | |
|------------|---|------------|----------------------------------|
| 00. | HICP (all-items index) | 06. | Health |
| 01. | Food and non-alcoholic beverages | 07. | Transports |
| 02. | Alcoholic beverages and tobacco | 08. | Communications |
| 03. | Clothing and footwear | 09. | Recreation and culture |
| 04. | Housing, water, electricity, gas and other fuels | 10. | Education |
| 05. | Furnishings, household equipment and routine maintenance of the house | 11. | Restaurants and hotels |
| | | 12. | Miscellaneous goods and services |

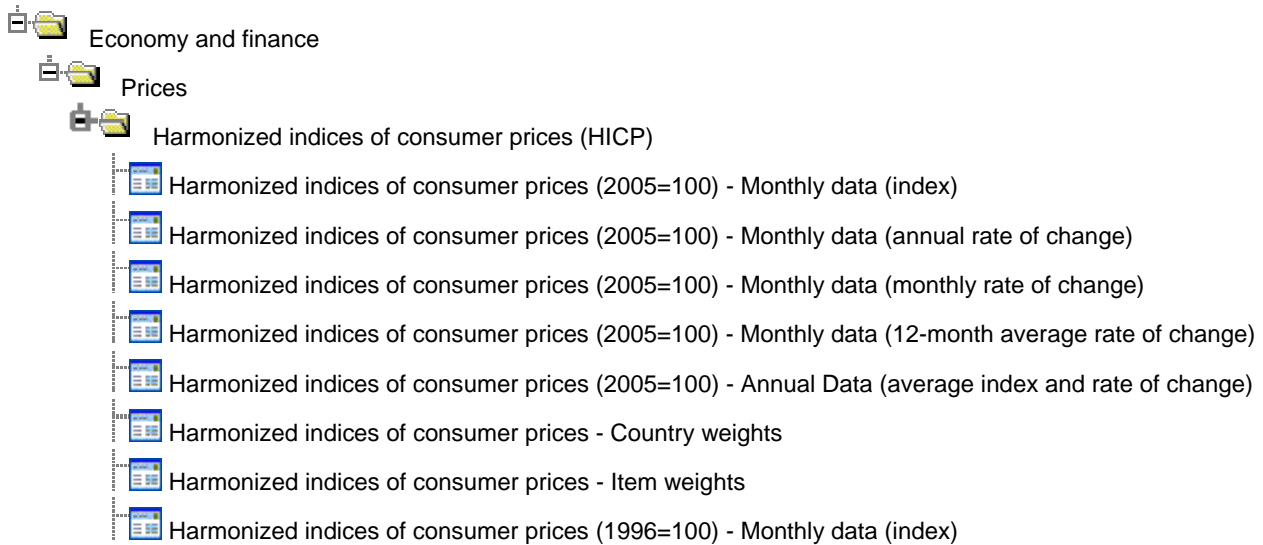
Further information:

Dedicated HICP section on the Eurostat website:

http://epp.eurostat.ec.europa.eu/pls/portal/url/page/PGP_DS_HICP

Data:

Eurostat website / Economy and finance / Data



Journalists can contact the media support service:

Bech Building Office A4/125
L - 2920 Luxembourg

Tel. (352) 4301 33408
Fax (352) 4301 35349

E-mail: eurostat-mediasupport@ec.europa.eu

European Statistical Data Support:

Eurostat set up with the members of the 'European statistical system' a network of support centres, which will exist in nearly all Member States as well as in some EFTA countries.

Their mission is to provide help and guidance to Internet users of European statistical data.

Contact details for this support network can be found on our Internet site: <http://ec.europa.eu/eurostat/>

A list of worldwide sales outlets is available at the:

Office for Official Publications of the European Communities.

2, rue Mercier
L - 2985 Luxembourg

URL: <http://publications.europa.eu>
E-mail: info-info-opoce@ec.europa.eu
