

Farm structure in Slovakia – 2005

94 % of the utilised agricultural area is in farms of 100 ha or more

This Statistics in Focus is part of a series of country-specific publications on the results of the Farm Structure Survey (FSS) 2005. It provides a brief but nevertheless comprehensive insight into the farm structure in Slovakia. A similar publication was issued in March 2005 presenting the results of the FSS 2003 in Slovakia.

In December 2005 in Slovakia, about **12.9 thousand*** agricultural holdings had an economic size of at least 1 European Size Unit (ESU).

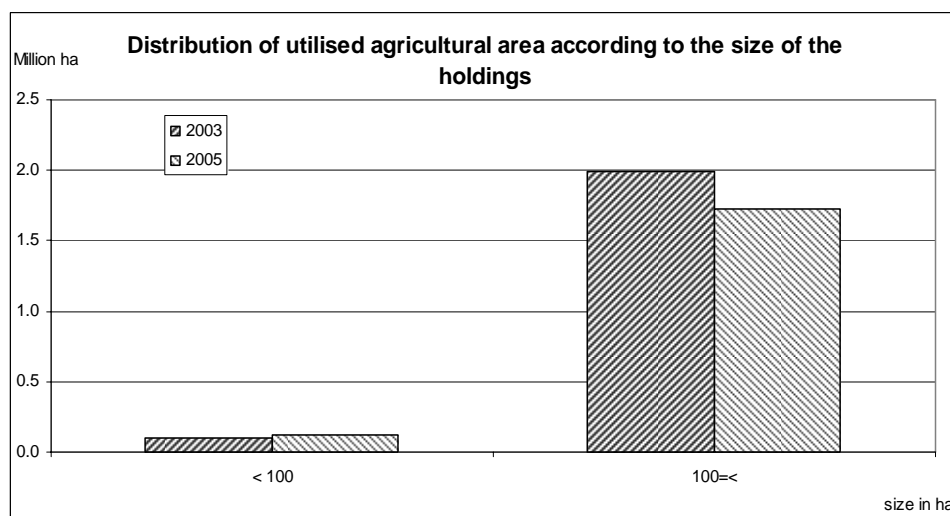
- These holdings employed 66.7 thousand AWUs (annual work units), the equivalent of 66.7 thousand persons working full time;
- they made use of about 1.8 million ha of agricultural area, which is on average **143 ha per holding** (compared to 172.1 ha in 2003).

Among these 12.9 thousand agricultural holdings

- 50% made use of less than one AWU, while 20% made use of 2 or more AWUs;
- 50% used less than 5 ha agricultural area, while 16% used 100 ha or more;
- 24% were holdings of the type specialist cereals, oil seed and protein crops, 20% were engaged in combined field cropping and grazing livestock, 14% were specialist general field cropping, 11% were specialist dairy farming and 7% were mixed cropping;
- 67% of their agricultural area was situated in less favoured or mountain areas;
- 1% were organic farms;
- 65% were producing mainly for their own consumption;
- 4% benefited from direct investment aid.

Among the 11.2 thousand sole holders

- 15% were women;
- 46% were aged 55 or more, and 9% were younger than 35 years;
- 37% had another gainful activity as their major occupation.



Due to differences in the threshold across Member States, the total number of farms is not comparable between countries. This is why the present analysis, including Tables 1-4 and the graphs focus on holdings of at least one ESU. See methodological notes for more information on the concept of the ESU.

Statistics in focus

AGRICULTURE AND FISHERIES

7/2007

Agriculture

Authors

György BENOIST

PoI MARQUER

Contents

Table 1 – Labour force by size of the farms.....3

Table 2 – Agricultural holdings by size.....4

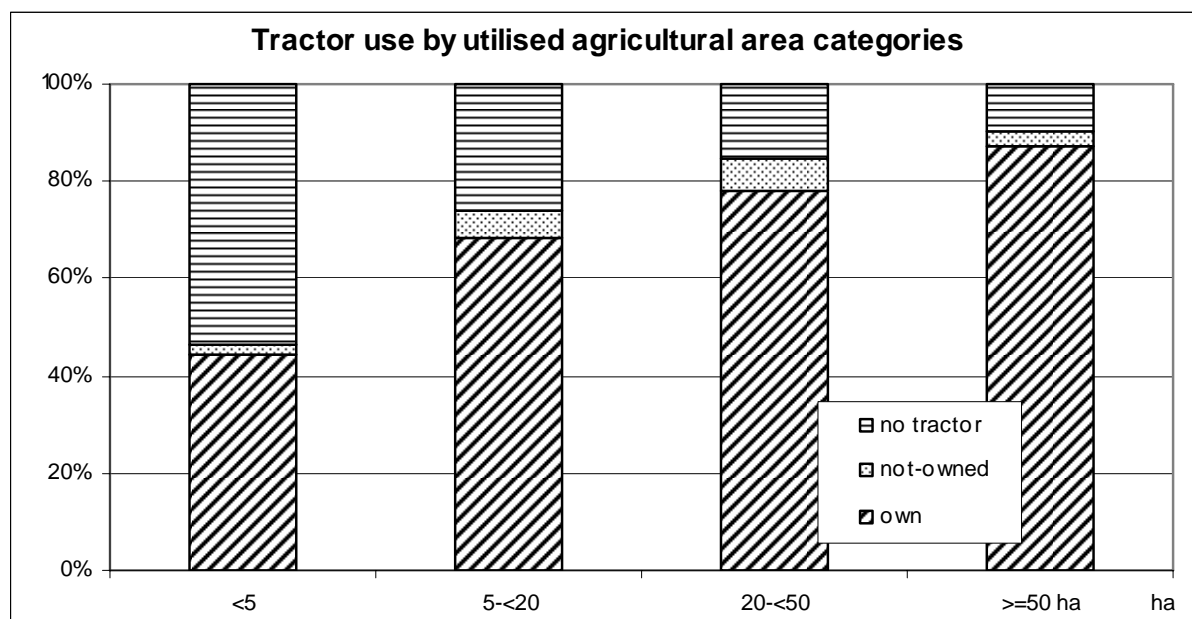
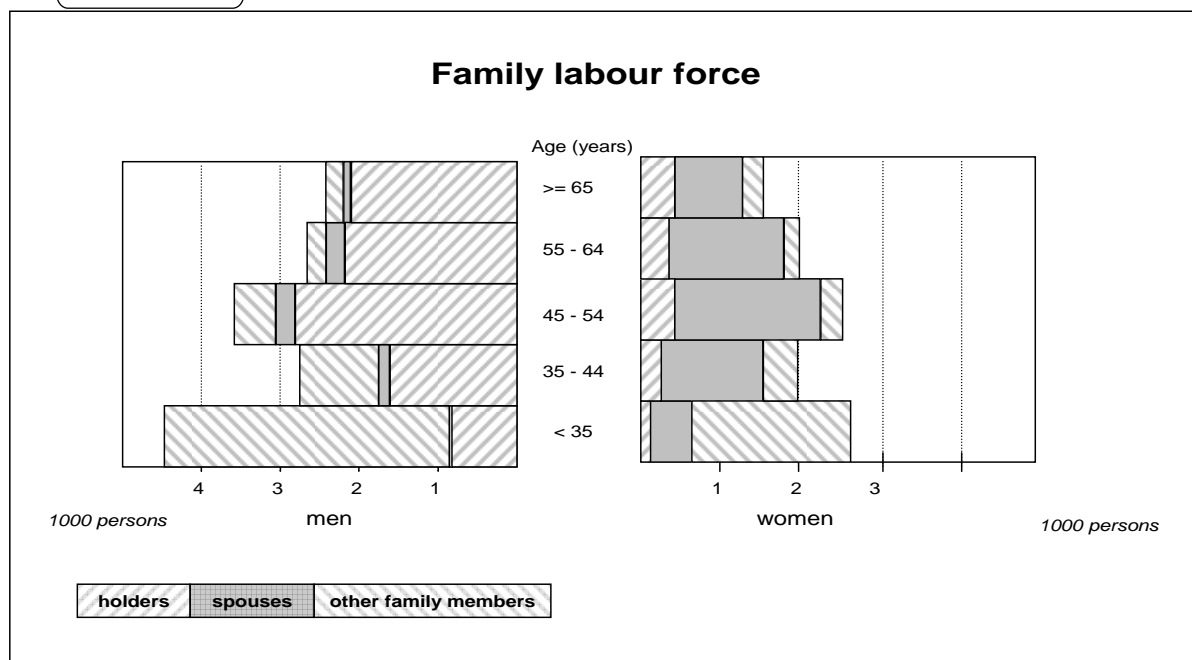
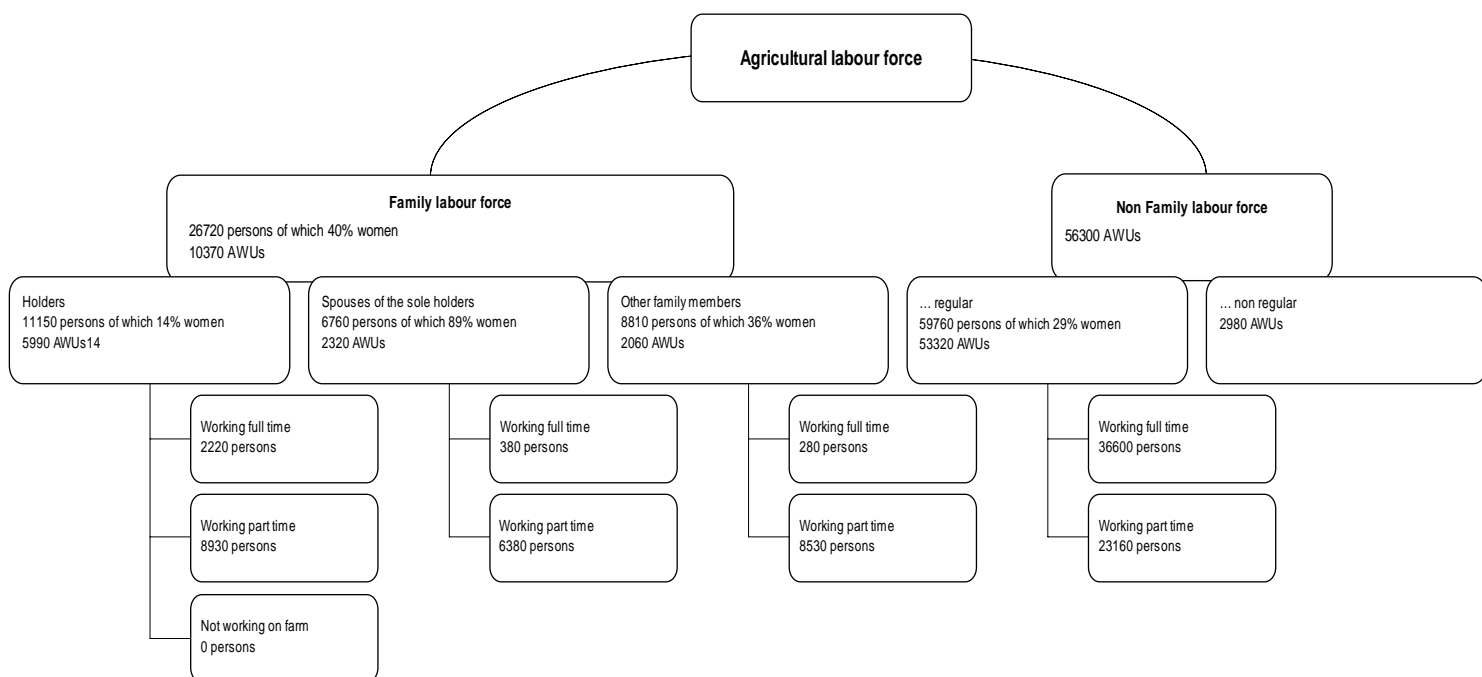
Table 3 – Land use by size of the farms.....5

Table 4 – Livestock by size of the farms.....6

Table 5 – Subsistence farming.7



Slovakia 2005 – Holdings of at least 1 ESU



Size of the farms	Agricultural area (ha)				All farms	Livestock (LU*)			
	< 5	5 - < 20	20 - < 50	50 = <		0	0 < - < 5	5 - < 50	50 = <
Total labour force									
1000 annual work units	7.7	3.3	1.8	53.8	66.7	9.2	6.4	3.5	47.6
Family labour force									
1000 persons	16.3	6.0	1.9	2.5	26.7	4.6	18.1	3.6	0.5
1000 annual work units	5.4	2.5	1.0	1.5	10.4	2.0	6.1	1.9	0.3
Non-family labour regularly employed									
1000 persons	2.6	1.0	1.0	55.2	59.8	7.6	0.4	1.7	50.1
1000 annual work units	2.2	0.8	0.7	49.7	53.3	6.4	0.2	1.4	45.4
Non regular non family labour force									
1000 annual work units	0.1	0.1	0.1	2.6	3.0	0.9	0.0	0.2	1.9
Holding managers (1000)	6.4	2.8	1.1	2.6	12.9	2.9	7.0	1.7	1.2
- women (%)	16.1	14.3	14.1	11.0	14.5	15.0	15.6	13.0	9.1
- part-time - under 50 % (%)	54.9	43.2	28.8	11.7	41.5	40.7	53.4	20.3	5.6
- 50 % and over(%)	33.5	34.7	32.0	25.1	31.9	28.7	34.8	34.8	18.9
- with a basic agricult. training only (%)	12.7	21.9	29.4	27.4	19.0	25.4	13.5	25.2	26.8
- with a full agricultural training (%)	3.3	6.0	9.5	43.6	12.5	20.7	1.9	9.5	58.0
Sole/main holders (1000)	6.3	2.7	1.0	1.2	11.2	2.4	6.9	1.6	0.2
- women (%)	14.8	14.0	14.6	13.7	14.5	15.8	14.2	13.2	16.4
- distribution by age (%)									
- under 35 years	5.4	10.0	17.5	14.4	8.5	14.4	4.9	14.4	16.4
- from 35 to 44 years	13.8	18.1	23.6	24.1	16.8	24.1	12.6	23.0	25.3
- from 45 to 54 years	26.5	31.6	31.1	35.6	29.1	33.4	26.6	32.9	34.2
- from 55 to 64 years	24.4	21.8	19.0	20.4	22.9	18.3	25.2	19.8	20.4
- 65 years and over	29.9	18.5	8.8	5.5	22.7	9.8	30.7	10.0	3.6
- part-time - under 50 % (%)	56.1	44.5	31.6	25.5	47.9	49.8	53.6	22.3	30.2
- 50 % and over(%)	34.2	35.7	35.0	54.7	36.8	35.1	35.0	38.4	102.2
- with another gainful activity ¹ (%)	40.4	43.5	33.8	27.8	39.2	43.1	39.8	33.3	19.7
- as main occupation	38.9	39.6	29.4	22.0	36.5	39.1	38.3	27.3	16.3
- as a subsidiary occupation	1.4	3.8	4.4	5.8	2.7	4.0	1.5	6.0	3.4
Spouse of sole holder working on the holding (1000)	4.2	1.5	0.5	0.5	6.8	1.1	4.7	0.9	0.1
- women (%)	91.5	86.4	81.0	82.3	88.9	81.2	91.9	83.1	81.1
- distribution by age (%)									
- under 35 years	7.2	8.4	16.1	12.5	8.5	13.9	6.1	13.6	15.6
- from 35 to 54 years	48.5	55.3	60.7	67.3	52.3	64.1	48.0	59.2	68.9
- 55 years and over	44.3	36.4	23.2	20.1	39.2	22.1	45.9	27.2	15.6
- part-time - under 50 % (%)	77.0	73.5	69.1	53.1	73.8	76.8	75.9	61.8	42.2
- 50 % and over(%)	19.2	21.0	20.8	30.6	20.6	17.4	19.9	27.6	30.0
- with another gainful activity (%)	38.9	43.2	45.5	40.6	40.5	55.1	37.3	39.7	33.3
Other members of the holder's family working on the holding (1000)	5.8	1.8	0.5	0.7	8.8	1.1	6.5	1.1	0.1
- women (%)	38.7	34.2	29.6	27.2	36.3	30.8	38.0	33.2	28.1
- part-time - under 50 % (%)	91.7	84.1	73.3	55.1	86.1	78.8	91.2	69.8	35.6
- 50 % and over(%)	7.2	13.7	18.6	26.4	10.8	15.1	7.8	20.9	34.2
- with another gainful activity (%)	57.8	52.1	42.2	31.7	53.6	44.1	57.5	43.7	27.4

Symbols : not available 0 less than half of the unit or nil

* LU = Livestock Unit

¹ Refers only to holders who are also farm managers.

Size of the farms	Agricultural area (ha)				All farms	Livestock (LU)			
	< 5	5 - < 20	20 - < 50	50 = <		0	0 < - < 5	5 - < 50	50 = <
Holdings									
- total number (1000)	6.4	2.8	1.1	2.6	12.9	2.9	7.0	1.7	1.2
- by legal personality of the holder (%)									
- sole holder	97.9	97.1	91.3	45.8	86.7	81.7	99.6	90.7	18.5
- legal person	2.1	2.9	8.7	54.2	13.3	18.3	0.4	9.3	81.5
- group holders	0.0	0.0	0.0	0.0	0.0	0.0	0.0	0.0	0.0
- by employed labour force (%)									
- under 1 AWU	63.1	55.2	40.4	14.0	49.6	50.8	62.2	29.6	3.5
- from 1 to less than 2 AWU	29.7	35.7	42.0	19.4	30.0	26.1	31.9	46.2	5.3
- from 2 to less than 3 AWU	5.1	6.6	10.8	9.3	6.7	7.2	5.4	13.0	4.3
- 3 AWU and over	2.1	2.5	6.7	57.2	13.7	15.9	0.6	11.2	86.9
- by economic size (%)									
- from 1 to less than 8 ESU	97.8	93.0	56.0	7.0	75.0	56.3	97.2	68.6	2.2
- from 8 to less than 16 ESU	0.7	5.8	31.0	10.9	6.3	13.0	1.4	16.4	4.3
- from 16 to less than 40 ESU	0.5	1.0	11.3	24.1	6.2	13.4	1.0	10.3	13.2
- from 40 to less than 100 ESU	0.4	0.1	1.2	21.2	4.6	10.1	0.3	3.0	18.6
- 100 ESU and over	0.6	0.1	0.5	36.7	7.8	7.3	0.1	1.7	61.7
- by farm type (%)									
- specialist cereals, oil seed and protein crops	5.2	42.1	53.5	39.9	24.1	47.1	16.4	23.0	14.3
- field crops – grazing livestock combined	24.3	14.3	7.3	18.0	19.5	0.9	26.2	15.9	31.0
- general field cropping	12.9	17.7	16.9	10.7	13.8	21.8	13.7	7.3	4.5
- specialist dairy farming	16.8	3.7	2.6	5.7	10.6	0.0	15.3	8.6	11.8
- mixed cropping	7.8	8.2	3.6	4.8	6.9	4.1	8.4	6.0	6.5
- other types of farming	33.1	14.0	16.1	21.1	25.1	26.1	20.0	39.1	31.9
- by farming methods (%)									
- organic farming	0.0	0.1	0.4	2.2	0.5	0.7	0.0	0.4	3.1
- irrigating	7.3	9.6	8.2	11.5	8.7	17.9	5.9	4.3	9.2
- with fixed irrigation equipment	1.5	2.7	1.9	5.9	2.7	5.1	1.2	0.7	8.0
- with crops under glass	4.2	2.4	1.2	1.1	2.9	6.3	2.4	1.1	0.5
- benefiting of direct investment aids	0.1	0.3	1.7	16.9	3.7	2.3	0.1	4.8	25.9
- using a tractor (%)	46.2	73.8	84.5	90.5	64.3	64.3	56.4	77.8	90.0
- with their own tractor	44.3	68.6	78.2	87.1	61.0	59.0	54.0	73.6	87.6
- using a combine harvester (%)	3.9	17.0	32.6	55.0	19.4	22.7	8.6	26.3	63.5
- with another gainful activity than agricultural production (%)	2.7	10.1	16.7	27.1	10.4	15.9	3.0	15.4	32.2
- tourism	0.2	0.6	1.5	2.5	0.8	0.7	0.2	2.2	3.0
- handicraft	0.1	0.9	0.8	1.2	0.6	0.6	0.2	0.9	1.7
- processing of farm products	0.6	1.2	2.4	6.6	2.1	2.9	0.3	2.1	10.0
- wood processing	0.2	0.7	1.0	1.2	0.6	0.6	0.2	1.4	0.9
- aquaculture	0.0	0.1	0.1	0.2	0.1	0.1	0.0	0.1	0.3
- renewable energy production	0.0	0.1	0.1	0.2	0.1	0.1	0.0	0.1	0.2
- contractual work	0.4	2.6	5.4	12.7	3.8	5.1	0.8	4.8	16.1
- other gainful activities n.a.e.	1.8	5.7	8.3	13.9	5.6	8.6	1.7	7.4	18.1

Symbols : not available 0 less than half of the unit or nil

Size of the farm (1000 ha)	Agricultural area (ha)				All farms	Livestock (LU)			
	< 5	5 - < 20	20 -< 50	50 =<		0	0 <- < 5	5 -< 50	50 =<
Area									
Total area of agricultural holdings	13.9	28.0	36.0	2937.1	3015.0	353.1	48.4	115.7	2497.8
Other area	2.1	1.3	2.3	1169.0	1174.6	28.3	1.9	4.1	1140.4
Wooded area	0.7	0.6	1.5	1103.3	1106.1	21.1	0.8	1.0	1083.1
Agricultural area	11.8	26.7	33.7	1768.2	1840.4	324.8	46.5	111.6	1357.4
Arable land	7.9	21.2	25.7	1245.2	1300.0	282.4	38.0	65.7	913.9
Cereals	5.5	16.9	18.7	728.5	769.7	189.1	28.0	43.5	509.1
<i>Common wheat and spelt</i>	2.3	6.9	7.1	336.7	353.0	85.0	12.7	18.1	237.3
<i>Durum wheat</i>	0.0	0.0	0.0	5.1	5.1	1.1	0.0	0.0	4.0
<i>Rye</i>	0.1	0.3	0.4	22.3	23.1	3.0	0.5	1.8	17.7
<i>Barley</i>	1.8	5.3	5.5	184.6	197.2	50.1	8.2	12.0	126.9
<i>Oats</i>	0.3	0.7	0.7	19.6	21.3	2.8	0.9	2.5	15.1
<i>Grain maize</i>	0.7	2.9	4.4	140.1	148.1	44.3	4.7	7.5	91.5
Dried pulses	0.0	0.1	0.2	16.2	16.6	4.8	0.3	0.5	11.0
Root crops	1.4	0.8	0.8	39.0	41.9	10.9	2.3	1.0	27.9
<i>Potatoes</i>	1.3	0.7	0.5	6.5	9.0	3.3	1.9	0.5	3.2
<i>Sugar beet</i>	0.0	0.1	0.2	32.4	32.6	7.4	0.3	0.5	24.5
<i>Fodder root</i>	0.1	0.0	0.1	0.2	0.3	0.1	0.1	0.0	0.1
Industrial crops	0.1	1.3	3.4	215.0	219.8	56.8	5.3	11.9	145.9
<i>Tobacco</i>	0.0	0.1	0.1	0.8	1.0	0.4	0.0	0.1	0.5
<i>Hops</i>	0.0	0.0	0.0	0.3	0.3	0.0	0.0	0.0	0.3
<i>Cotton</i>	0.0	0.0	0.0	0.0	0.0	0.0	0.0	0.0	0.0
<i>Rape and turnip</i>	0.0	0.5	1.3	106.0	107.9	24.1	2.5	5.9	75.5
<i>Sunflower</i>	0.0	0.5	1.6	89.9	92.1	27.8	2.2	4.7	57.3
<i>Soya</i>	0.0	0.0	0.2	10.7	10.9	2.2	0.1	0.8	7.7
Fresh vegetables, melons, strawberry	0.4	0.8	0.7	6.2	8.1	5.5	0.5	0.2	2.0
<i>outside</i>	0.4	0.8	0.7	6.1	7.9	5.4	0.4	0.2	1.9
<i>under glass</i>	0.0	0.0	0.0	0.1	0.2	0.1	0.0	0.0	0.0
Flower and ornamental plants	0.1	0.0	0.0	0.2	0.3	0.2	0.0	0.0	0.0
<i>outside</i>	0.0	0.0	0.0	0.2	0.2	0.2	0.0	0.0	0.0
<i>under glass</i>	0.0	0.0	0.0	0.0	0.1	0.0	0.0	0.0	0.0
Forage plants	0.4	1.1	1.6	229.9	233.0	10.5	1.4	7.7	213.3
Fallow land	0.1	0.1	0.2	9.1	9.4	3.7	0.3	0.8	4.6
Kitchen garden	0.5	0.1	0.1	0.5	1.2	0.1	0.5	0.2	0.4
Permanent pasture and meadows	2.8	4.4	6.5	501.6	515.4	28.7	7.3	45.0	434.4
Permanent crops	0.6	0.9	1.4	20.8	23.8	13.6	0.7	0.8	8.6
Fruit and berry plantation	0.2	0.4	0.6	8.2	9.4	5.7	0.2	0.5	2.9
Citrus plantation	0.0	0.0	0.0	0.0	0.0	0.0	0.0	0.0	0.0
Olive trees	0.0	0.0	0.0	0.0	0.0	0.0	0.0	0.0	0.0
Vineyard	0.4	0.5	0.8	12.4	14.0	7.6	0.5	0.3	5.7
Ratios									
Agricultural area per holding (ha)	1.8	9.6	32.0	680.6	143.0	110.4	6.7	64.3	1114.4
Agricultural area... (%)									
... own farmed	89.8	71.0	46.6	5.3	7.6	17.2	55.0	26.0	2.1
... in less favoured or mountain area	74.7	59.4	59.3	66.7	66.5	45.9	65.1	77.7	70.6
... organic farmed	0.1	0.1	0.3	1.8	1.7	1.1	0.0	1.5	1.9
... irrigated	2.7	3.4	3.8	2.4	2.4	4.8	1.6	0.7	2.0

Symbols : not available 0 less than half of the unit or nil

Size of the farm	Agricultural area (ha)				All farms	Livestock (LU)		
	< 5	5 - < 20	20 - < 50	50 = <		0 < - < 5	5 - < 50	50 = <
Total livestock (1000 LU)	122.2	16.4	21.9	578.4	739.0	14.1	26.7	698.2
of which grazing (%)	9.7	31.5	18.4	66.4	54.8	57.7	65.3	54.3
Grazing livestock (1000 heads)								
Equidae	0.7	0.6	0.5	2.7	4.5	0.7	1.6	2.1
Bovine animals	13.8	5.0	3.7	478.2	500.6	8.1	13.4	479.2
Under 1 year	4.7	1.5	1.3	137.0	144.4	1.7	4.2	138.5
From 1 to less than 2 years	2.2	0.9	0.8	97.6	101.4	0.6	3.0	97.8
Dairy cows	5.8	1.8	0.8	176.6	185.0	5.4	2.8	176.8
Other cows	0.5	0.5	0.6	28.9	30.5	0.2	2.4	28.0
Other bovine animals 2 years and older	0.6	0.3	0.3	38.2	39.3	0.2	1.0	38.1
Sheep	9.7	9.7	10.6	270.4	300.4	6.1	65.9	228.3
Goats	1.5	0.8	0.2	3.5	6.0	1.7	2.0	2.2
Granivores								
Pigs (1000 heads)	153.3	24.4	38.6	710.7	927.0	17.0	31.3	878.8
Piglets < 20 kg	38.3	9.0	11.2	222.3	280.8	2.5	6.7	271.6
Breeding sows	15.2	4.8	4.4	81.8	106.1	1.4	3.7	101.0
Other pigs	99.8	10.7	23.1	406.6	540.1	13.1	20.9	506.2
Poultry (million heads)	7.4	0.4	0.9	2.8	11.4	0.1	0.1	11.2
Broilers	4.9	0.1	0.5	1.9	7.4	0.0	0.0	7.3
Laying hens	2.4	0.2	0.3	0.9	3.8	0.1	0.0	3.7
Other poultry	0.1	0.1	0.0	0.0	0.2	0.0	0.0	0.2
Rabbits, breeding females (1000 heads)	17.1	0.8	0.6	3.6	22.2	3.6	5.5	13.1
Beehives* (1000)	32.2	1.8	0.5	0.6	35.1	17.6	1.0	0.2
Average size of herds**								
Equidae (head/holding)	1.8	2.6	5.6	10.1	4.6	1.4	5.2	12.4
Cattle (head/holding)	3.8	4.9	10.8	394.9	80.5	1.9	12.9	500.2
Dairy cows (head/holding)	1.7	2.2	4.1	217.7	34.9	1.4	4.3	252.3
Other cows (head/holding)	7.6	3.9	5.5	58.3	38.6	1.6	7.7	74.0
Sheep (head/holding)	20.5	40.4	107.1	453.6	213.2	11.6	132.8	596.2
Goats (head/holding)	3.7	5.7	8.2	35.7	8.9	3.5	14.0	49.6
Pigs (head/holding)	35.1	15.1	100.9	941.3	130.2	3.1	29.3	1512.5
Breeding sows (head/holding)	22.5	7.9	19.8	142.1	51.2	1.6	5.4	210.1
Other pigs > 20 kg (head/holding)	23.3	7.0	63.7	550.9	78.3	2.5	20.4	877.2
Rabbits, breeding females (head/holding)	37.3	7.9	38.1	328.7	37.7	6.8	100.7	1451.3
Laying hens (1000/holding)	0.6	0.2	2.1	9.2	0.7	0.0	0.1	60.2
Broilers (1000/holding)	24.2	1.0	48.6	55.2	23.4	0.0	0.6	103.4
Beehives (hive/holding)	45.7	25.5	35.0	43.9	43.7	30.8	27.2	39.0

Symbols : not available 0 less than half of the unit or nil

* Bees are not taken into account when calculating Livestock Unit, there are 16.3 thousand hives on holdings with 0 LU.

** Number of animals of a given livestock category per holding with this kind of animal.

		Absolute figures			% of total	
		Total	< 1 ESU	>= 1 ESU	< 1 ESU	>= 1 ESU
Regular labour force	(1000 persons)	219.8	133.4	86.5	60.7	39.3
Regular labour force	(1000 AWU)	95.8	32.1	63.7	33.5	66.5
Holders	(1000 persons)	66.7	55.5	11.2	83.3	16.7
... at least 65 years old		20.0	17.5	2.5	87.4	12.6
... having another gainful activity		28.1	23.9	4.2	85.0	15.0
Number of holdings	(1000)	68.5	55.6	12.9	81.2	18.8
... producing mainly for own consumption		63.6	55.1	8.4	86.7	13.3
... producing mainly for direct sales		12.2	8.0	4.1	66.2	33.8
... using a tractor		20.5	12.2	8.3	59.6	40.4
Standard Gross Margin (SGM)	(1000 ESU)	519.2	21.2	498.0	4.1	95.9
Agricultural area	(1000 ha)	1879.5	39.1	1840.4	2.1	97.9
... owned farmed		173.3	33.7	139.6	19.4	80.6
Livestock	(1000 LU)	782.7	43.7	739.0	5.6	94.4

Symbols : not available 0 less than half of the unit or nil

► METHODOLOGICAL NOTES

The survey on the structure of agricultural holdings in Slovakia was carried out in December 2005 using a combined method (exhaustive and sample). The previous full-scale agricultural census was conducted in 2001. The reference period of the FSS 2005 was the calendar year 2005; however in case of livestock and land area the reference time was 31 December 2005.

A holding is defined as a technically and economically independent unit under independent management, which produces agricultural products. However it can provide services or can produce other non-agricultural products as well. The target population was all registered and non-registered units reaching certain thresholds (e.g. 0.5 ha UAA, 0.15 ha intensive crops, 1 cattle, 2 pigs, etc). All registered units (about 18 600) and non-registered units over 1 ha utilised agricultural area (about 14 500) were observed. From the remaining, non-registered units, a random sample, stratified by regions was drawn (about 9300 units). The sampling fraction was about 19%.

For each activity ('enterprise') on a farm (for instance wheat, dairy cow or vineyard), a **standard gross margin (SGM)** is estimated, based on the area (or the number of heads) and a regional coefficient. The sum of such margins in a farm is its **economic size**, expressed in **European Size Units (ESU)**. 1 ESU is equal to 1200 euros.

Each farm is classified in the community typology by its economic size and its **type of farming**, depending on the share of each enterprise in its economic size. For instance, a farm where breeding sows account for more than 2/3 of the economic size, is classified as

specialist pig rearing (type 5011). Depending on the level of aggregation, farms are grouped into 8 to 70 types.

Annual work unit (AWU) is equivalent to a worker employed on a full time basis for one year. In Slovakia it is 1800 hours (225 working days of 8 working hours per day).

Livestock Unit (LU) is equivalent to a dairy cow. The number of animals (number of heads) is converted into LU using a set of coefficients reflecting the feed requirements of the different animal categories.

Subsistence farming refers here to all farms below 1 ESU economic size. Note that the number of farms cannot be compared between countries due to the differences in coverage of FSS.

► REFERENCE PUBLICATIONS

Komplexné výsledky - I. (Complete results - I.), Statistical Office of the Slovak Republic, Bratislava, November 2006.

Komplexné výsledky - II. (Complete results - II.), Statistical Office of the Slovak Republic, Bratislava, November 2006

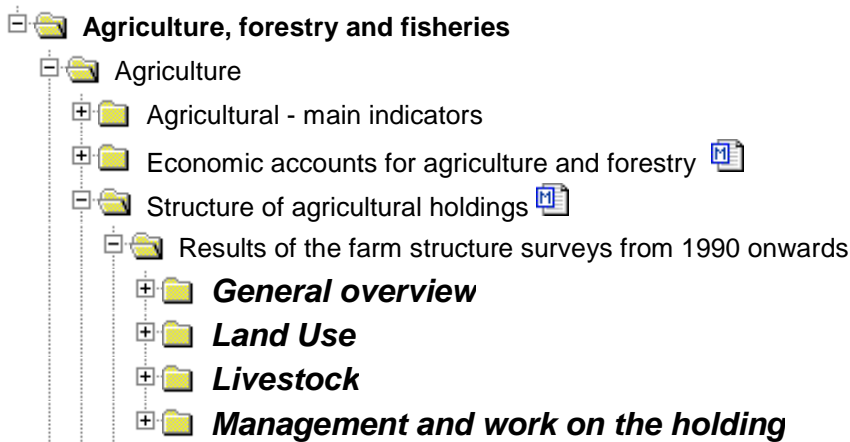
Typológia fariem (Typology of farms), Statistical Office of the Slovak Republic, Bratislava, November 2006

Website of the Statistical Office of the Slovak Republic (Štatistický úrad Slovenskej Republiky) www.statistics.sk

National Methodological Report – FSS 2005 (available on request)

Further information:

Data: [EUROSTAT Website/Theme: Agriculture and Fisheries/Data](#)



Journalists can contact the media support service:

Bech Building Office A4/125
L - 2920 Luxembourg

Tel. (352) 4301 33408
Fax (352) 4301 35349

E-mail: eurostat-mediasupport@ec.europa.eu

European Statistical Data Support:

Eurostat set up with the members of the 'European statistical system' a network of support centres, which will exist in nearly all Member States as well as in some EFTA countries.

Their mission is to provide help and guidance to Internet users of European statistical data.

Contact details for this support network can be found on our Internet site: <http://ec.europa.eu/eurostat/>

A list of worldwide sales outlets is available at the:
Office for Official Publications of the European Communities.

2, rue Mercier
L - 2985 Luxembourg

URL: <http://publications.europa.eu>

E-mail: info-info-opoce@ec.europa.eu
