

Developments for labour input indicators

during the first quarter of 2005

Statistics in focus

INDUSTRY, TRADE AND SERVICES

28/2005

Author

Axel BEHRENS

Contents

Employment index for industry (excluding construction) 2

Employment index for services 3

Hours worked index for total industry (excluding construction).. 6

Wages and salaries index for total industry (excluding construction)..... 8

Labour input indices for industrial Divisions of NACE ... 10

Latest developments for the employment index for the EU-25's industrial economy (excluding construction) showed a 0.2 % decrease between the last quarter of 2004 and the first quarter of 2005. This negative rate was slightly higher than during the previous quarter, when employment fell by 0.1 %. Nonetheless it remained less marked than during the second and third quarters of 2004. Concerning the euro-zone, the number of persons employed in the industrial economy contracted by 0.4 % between the last quarter of 2004 and the first quarter of 2005, following on from no change in the fourth quarter of 2004.

The volume of hours worked in the EU-25's industrial economy went down by 0.3 % in the first quarter of 2005 compared to the previous quarter. Note that this decrease was slightly faster than the decrease for the number of persons employed. In the euro-zone the volume of hours worked decreased by 0.6 % which was the highest decrease since the second quarter of 2003. The index of wages and salaries for industry grew by 0.3 % in the EU-25 and by 0.2 % in the euro-zone between the last quarter of 2004 and the first quarter of 2005.

	Quarter on quarter growth rates, seasonally adjusted data		Year on year growth rates, gross data	
	EU-25	Euro-zone	EU-25	Euro-zone
Employment	-0.2	-0.4	-0.9	-1.3
Hours worked	-0.3	-0.6	-2.3	-2.7
Wages & salaries	0.3	0.2	1.2	0.9

Table 1: RECENT GROWTH RATES FOR TOTAL INDUSTRY (EXCLUDING CONSTRUCTION), Q1/2005 (%); SOURCE: EUROSTAT STS

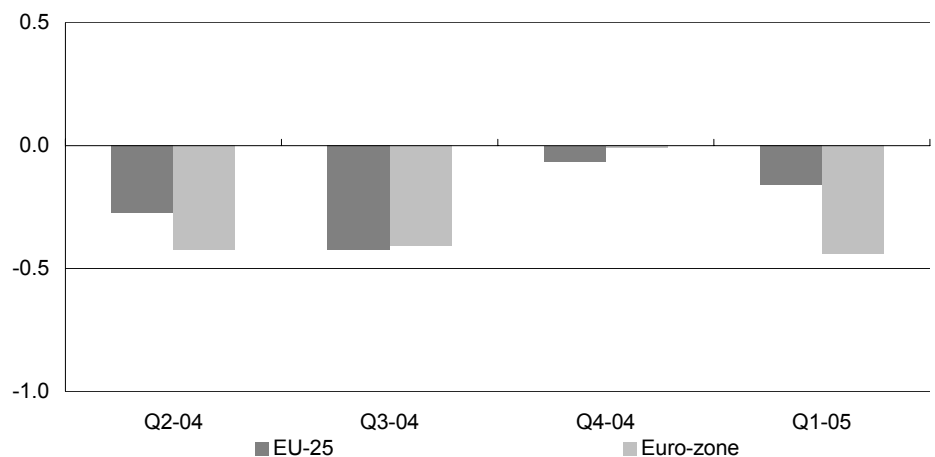


Figure 1: EMPLOYMENT INDEX FOR TOTAL INDUSTRY (EXCLUDING CONSTRUCTION), GROWTH RATES, QUARTER COMPARED TO PREVIOUS QUARTER, SEASONALLY ADJUSTED (%); SOURCE: EUROSTAT STS



Employment index for industry (excluding construction)

Industrial employment in the EU-25 declined in all of the five Main Industrial Groupings (MIGs) between the last quarter of 2004 and the first quarter of 2005 – see Table 2. This latest development contrasted with net increases recorded for intermediate goods (0.2 %) and capital goods (0.1 %) during the last quarter of 2004. Moreover decreases in the three remaining MIGs were faster during the first quarter of 2005 than during the previous quarter. The decrease in the index of

employment ranged from -0.6 % for energy and both consumer durables and consumer non-durables to -0.1 % for intermediate goods.

Compared with the same quarter of a year before, the employment index in the EU-25 was lower for each of the MIGs in the first quarter of 2005. With the exception of consumer durables, this lower level of the index was less marked than in the previous quarter.

		Quarter on quarter growth rates, seasonally adjusted data						Year on year growth rates, gross data					
		Q4-03	Q1-04	Q2-04	Q3-04	Q4-04	Q1-05	Q4-03	Q1-04	Q2-04	Q3-04	Q4-04	Q1-05
Total industry (excluding construction)	EU-25	-0.6	-0.3	-0.3	-0.4	-0.1	-0.2	-1.9	-2.1	-1.9	-1.7	-1.1	-0.9
	Euro-zone	-0.7	-0.3	-0.4	-0.4	0.0	-0.4	-1.7	-2.1	-2.1	-1.9	-1.2	-1.3
Energy	EU-25	-0.9	-0.8	-0.8	-0.9	-0.5	-0.6	-2.7	-2.7	-2.9	-3.4	-3.0	-2.8
	Euro-zone	-0.6	-0.6	-0.9	-1.0	-0.3	-0.1	-0.7	-1.4	-1.8	-3.0	-2.7	-2.3
Intermediate goods	EU-25	-0.5	-0.2	-0.1	-0.3	0.2	-0.1	-2.1	-2.0	-1.6	-1.1	-0.4	-0.2
	Euro-zone	-0.7	-0.2	-0.4	-0.4	0.3	-0.3	-2.1	-2.2	-2.1	-1.7	-0.7	-0.8
Capital goods	EU-25	-0.3	-0.5	0.0	-0.2	0.1	-0.2	-1.3	-1.7	-1.5	-1.0	-0.5	-0.3
	Euro-zone	-0.5	-0.3	-0.2	-0.3	-0.1	-0.4	-1.3	-1.7	-1.6	-1.3	-0.9	-1.0
Consumer durables	EU-25	0.1	-0.2	-0.7	-0.5	-0.2	-0.6	-1.0	-2.0	-1.8	-1.3	-1.5	-1.7
	Euro-zone	-0.6	-1.1	-1.0	-0.3	-0.5	-0.5	-2.2	-3.6	-4.0	-3.0	-2.9	-2.3
Consumer non-durables	EU-25	-0.9	-0.7	-0.6	-0.7	-0.4	-0.6	-2.4	-2.8	-2.7	-3.0	-2.1	-2.1
	Euro-zone	-1.1	-0.3	-0.6	-0.7	-0.3	-0.8	-2.5	-2.6	-2.5	-2.8	-1.5	-2.1

Table 2: EMPLOYMENT INDEX FOR THE MIGS, GROWTH RATES (%); SOURCE: EUROSTAT STS

	Quarter on quarter growth rates, seasonally adj. data						Year on year growth rates, gross data					
	Q4-03	Q1-04	Q2-04	Q3-04	Q4-04	Q1-05	Q4-03	Q1-04	Q2-04	Q3-04	Q4-04	Q1-05
EU-25	-0.6	-0.3	-0.3	-0.4	-0.1	-0.2	-1.9	-2.1	-1.9	-1.7	-1.1	-0.9
Euro-zone	-0.7	-0.3	-0.4	-0.4	0.0	-0.4	-1.7	-2.1	-2.1	-1.9	-1.2	-1.3
BE	-1.1	-1.0	-0.9	-0.7	-0.3	0.2	-4.5	-4.4	-4.2	-3.3	-3.2	-1.7
CZ	0.9	-0.3	0.2	0.3	-0.1	0.3	-0.2	-0.9	0.0	1.1	0.1	0.7
DK	0.0	:	:	:	:	:	4.4	:	:	:	:	:
DE	-0.5	-0.7	-0.4	-0.3	-0.3	-0.6	-1.0	-2.2	-2.0	-1.8	-1.5	-1.6
EE	0.3	2.4	-0.1	-1.0	-1.5	1.9	0.4	1.9	2.9	1.6	-0.3	-0.8
EL	:	:	:	:	:	:	:	:	:	:	:	:
ES	-1.2	0.8	0.3	0.0	1.4	1.0	-1.9	-1.1	-0.1	-0.1	2.6	2.6
FR	-0.8	-0.4	-0.5	-0.5	-0.4	-0.7	-2.6	-2.5	-2.5	-2.3	-2.0	-2.2
IE	-0.6	-1.0	-0.4	-0.8	-0.6	-0.5	-3.3	-3.5	-2.7	-3.1	-2.9	-2.0
IT	c	c	c	c	c	c	c	c	c	c	c	c
CY	0.5	0.4	0.2	0.6	0.7	:	0.3	1.1	0.8	1.4	1.9	:
LV	0.4	1.4	-0.4	-0.2	-0.4	-1.6	3.3	3.7	2.1	1.6	1.3	-3.5
LT	0.6	0.6	0.0	0.3	-0.1	0.0	4.8	2.7	1.9	1.6	0.8	0.1
LU	0.0	-0.1	-0.4	-0.3	0.0	0.2	-0.5	-0.6	-0.4	-0.7	-0.7	-0.5
HU	-0.2	-1.7	-0.1	-0.4	-0.9	-0.5	-1.4	-2.5	-2.4	-2.3	-3.1	-1.9
MT	19.2	-6.1	1.8	-14.5	21.2	45.9	-0.8	-8.3	-7.7	-3.0	-1.3	53.3
NL	-1.0	-0.7	-1.0	-0.7	-0.6	c	-3.1	-3.5	-3.4	-3.3	-3.1	c
AT	-0.1	0.0	0.3	0.0	0.0	-0.5	0.3	-0.8	0.1	0.3	0.4	-0.2
PL	-0.6	0.4	0.0	-0.1	-0.2	1.4	-2.1	-0.8	-0.3	-0.3	0.1	1.1
PT	-0.9	-0.4	-1.0	-1.1	-1.3	-1.3	-4.9	-3.4	-3.2	-3.2	-3.7	-4.6
SI	-0.3	-0.5	-0.2	-0.1	0.0	-0.9	-2.1	-2.0	-1.4	-1.1	-0.8	-1.3
SK	-0.7	-0.8	1.2	0.8	1.1	0.5	-0.4	-1.0	-0.3	0.4	2.4	3.8
FI	-1.5	0.5	-0.3	-2.0	1.0	1.1	-3.5	-3.8	-2.3	-2.8	-0.6	-0.1
SE	-0.7	-0.5	-0.5	-0.1	-0.2	-0.2	-2.3	-2.6	-2.9	-1.6	-0.9	-0.8
UK	-1.2	-0.8	-0.5	-0.7	-0.5	-0.6	-5.3	-4.8	-4.0	-3.3	-2.6	-2.2
BG	2.7	-1.9	-0.2	0.1	-0.2	0.6	2.5	-0.9	0.0	0.6	-2.2	0.3
RO	-0.8	-2.8	-1.5	-0.3	-0.4	0.8	-1.3	-5.6	-6.4	-5.3	-4.9	-1.3

Table 3: EMPLOYMENT INDEX FOR TOTAL INDUSTRY (EXCLUDING CONSTRUCTION), GROWTH RATES (%); SOURCE: EUROSTAT STS

Employment index for services

	Quarter on quarter growth rates, seasonally adj. data						Year on year growth rates, gross data					
	Q4-03	Q1-04	Q2-04	Q3-04	Q4-04	Q1-05	Q4-03	Q1-04	Q2-04	Q3-04	Q4-04	Q1-05
EU-25	0.3	0.4	0.1	0.2	0.6	0.1	0.5	1.4	1.1	1.1	1.4	1.0
Euro-zone	0.3	0.7	0.1	0.2	0.7	-0.1	0.9	1.6	1.3	1.3	1.7	0.8
BE	-0.8	-0.1	:	:	:	:	-5.1	-4.0	:	:	:	:
CZ	c	c	c	c	c	c	c	c	c	c	c	c
DK	-2.3	:	:	:	:	:	-1.5	:	:	:	:	:
DE	0.0	0.3	-0.3	0.2	0.0	-0.2	-1.0	0.4	0.1	0.2	0.2	-0.4
EE	-0.4	-2.9	1.5	2.0	-0.3	4.9	-2.5	-1.2	-1.8	0.2	0.3	8.3
EL	:	:	:	:	:	:	:	:	:	:	:	:
ES	0.6	0.8	0.5	0.6	0.3	0.2	2.7	2.9	2.7	2.6	2.3	1.7
FR	0.2	0.1	0.1	0.1	0.1	0.1	0.6	0.6	0.6	0.5	0.4	0.3
IE	c	c	c	c	c	c	c	c	c	c	c	c
IT	c	c	c	c	c	c	c	c	c	c	c	c
CY	-0.2	0.6	0.2	1.0	1.1	:	-0.5	0.5	-0.5	1.4	3.6	:
LV	2.0	4.6	1.8	0.4	1.0	-0.2	3.7	10.1	10.7	9.0	8.0	3.0
LT	2.4	2.3	2.0	3.4	1.2	-1.3	9.4	9.7	10.6	10.6	9.2	5.3
LU	0.8	0.0	1.5	0.3	0.0	0.3	1.8	1.7	2.9	2.7	1.9	1.6
HU	1.2	2.6	1.5	1.0	0.8	0.3	3.1	7.2	7.0	6.4	6.0	3.6
MT	:	:	:	:	:	:	:	:	:	:	:	:
NL	-0.4	-0.5	-0.9	-0.5	-0.3	c	-1.2	-1.7	-2.1	-2.2	-2.1	c
AT	-0.3	0.1	0.2	0.1	0.5	0.1	-1.0	-0.5	-0.3	0.0	0.8	0.8
PL	0.1	1.3	0.4	-0.5	0.1	0.5	-2.5	1.8	2.0	1.3	1.2	0.4
PT	-0.4	2.8	-0.4	0.2	-0.3	-2.0	-3.5	0.5	0.8	2.2	2.2	-2.6
SI	0.0	-0.1	0.3	0.0	0.1	-0.1	-0.5	-0.7	-0.2	0.2	0.3	0.2
SK	-0.1	0.8	0.7	1.8	1.8	6.4	-13.6	-1.5	1.8	2.5	2.8	12.2
FI	-3.0	1.7	-0.1	2.0	1.6	1.0	0.7	0.9	2.0	0.4	5.2	4.4
SE	0.1	-0.7	2.1	0.0	-0.3	-0.7	2.8	1.7	1.1	1.5	1.1	1.1
UK	0.3	0.1	0.2	0.1	0.3	0.4	0.1	0.7	0.6	0.6	0.7	1.2
BG	3.7	2.0	2.1	-2.7	4.1	6.0	17.4	17.6	20.8	4.3	5.1	10.1
RO	-0.8	2.3	0.4	-1.8	-0.7	13.3	-0.3	0.4	1.3	0.1	0.0	11.1

Table 4: EMPLOYMENT INDEX FOR DISTRIBUTION (NACE SECTION G), GROWTH RATES (%);
SOURCE: EUROSTAT STS

	Quarter on quarter growth rates, seasonally adj. data						Year on year growth rates, gross data					
	Q4-03	Q1-04	Q2-04	Q3-04	Q4-04	Q1-05	Q4-03	Q1-04	Q2-04	Q3-04	Q4-04	Q1-05
EU-25	0.4	0.2	0.4	0.5	0.6	0.1	1.7	1.8	1.5	1.5	1.7	1.6
Euro-zone	0.3	0.8	0.4	0.4	0.5	0.0	2.1	2.3	2.0	1.9	2.1	1.3
BE	0.1	-2.1	:	:	:	:	5.4	-4.5	:	:	:	:
CZ	c	c	c	c	c	c	c	c	c	c	c	c
DK	-2.4	:	:	:	:	:	-1.5	:	:	:	:	:
DE	0.3	0.6	-0.1	0.7	0.1	-0.8	-0.1	1.6	1.2	1.5	1.3	-0.5
EE	-0.7	-4.3	2.9	1.3	0.4	1.2	-8.8	-5.0	-2.1	-0.9	0.2	5.9
EL	0.4	1.6	1.3	0.6	1.4	-0.4	1.6	2.9	4.5	3.9	4.9	2.9
ES	0.5	0.6	0.6	0.6	-0.1	0.8	2.9	3.3	2.8	2.2	2.2	1.5
FR	0.5	0.2	0.3	0.2	0.2	0.3	1.5	1.3	1.3	1.1	0.9	1.1
IE	c	c	c	c	c	c	c	c	c	c	c	c
IT	c	c	c	c	c	c	c	c	c	c	c	c
CY	0.2	1.1	0.8	1.8	1.5	:	-1.0	1.0	1.0	4.2	5.7	:
LV	2.3	1.3	0.6	0.3	-0.4	2.2	3.3	7.3	6.2	4.6	1.8	2.7
LT	2.4	1.4	2.5	3.9	1.1	-4.2	7.6	10.1	11.3	10.5	9.2	3.2
LU	0.6	-0.1	0.2	0.3	0.0	:	1.4	1.1	0.9	0.9	3.2	3.6
HU	1.7	4.0	1.5	1.6	0.8	-1.3	3.9	9.6	8.9	9.0	8.1	2.6
MT	0.0	-0.7	-1.6	2.7	-0.6	:	-7.5	-7.1	-5.4	0.7	0.0	:
NL	-0.5	-0.6	-1.1	-0.4	-0.7	c	-0.7	-1.8	-2.5	-2.7	-2.9	c
AT	0.2	0.3	0.6	0.4	0.5	0.1	1.0	0.2	1.1	1.6	1.9	1.6
PL	0.0	-0.9	0.4	0.8	0.8	0.9	1.1	-0.1	-0.4	0.3	1.1	3.0
PT	-0.1	-0.2	0.1	0.1	0.1	0.1	-0.1	-0.5	-0.1	-0.1	0.0	0.4
SI	0.0	0.4	0.7	-0.1	0.1	0.0	-1.7	-0.3	0.9	1.0	1.2	0.8
SK	-0.6	5.4	-0.1	-1.2	-1.0	9.2	-7.3	-0.6	4.3	3.4	3.0	6.7
FI	-2.5	2.3	-0.2	3.7	1.7	-0.1	-1.4	0.5	-1.0	3.8	8.1	5.3
SE	-1.6	-0.7	3.8	1.5	0.4	-1.2	2.0	2.0	1.1	3.0	5.1	4.5
UK	0.6	0.0	0.2	0.2	0.4	0.3	1.0	1.5	1.2	0.9	0.8	1.2
BG	4.5	5.0	0.3	-6.3	7.2	8.5	22.6	24.3	29.0	3.0	5.7	9.5
RO	-2.1	-0.3	-1.8	-3.3	-2.2	26.9	-5.3	-6.6	-6.3	-7.3	-7.4	17.9

Table 5: EMPLOYMENT INDEX FOR RETAIL TRADE (NACE DIVISION 52), GROWTH RATES (%);
SOURCE: EUROSTAT STS

Employment index for services (continued)

	Quarter on quarter growth rates, seasonally adj. data						Year on year growth rates, gross data					
	Q4-03	Q1-04	Q2-04	Q3-04	Q4-04	Q1-05	Q4-03	Q1-04	Q2-04	Q3-04	Q4-04	Q1-05
EU-25	0.6	0.5	0.3	0.4	0.3	0.2	1.8	1.9	1.6	1.7	1.5	1.1
Euro-zone	0.6	0.6	0.4	0.5	0.5	0.3	1.8	1.8	1.7	2.2	2.1	1.3
BE	:	:	:	:	:	:	:	:	:	:	:	:
CZ	c	c	c	c	c	c	c	c	c	c	c	c
DK	-1.6	:	:	:	:	:	-1.5	:	:	:	:	:
DE	1.8	-0.2	0.0	-0.1	-0.2	0.5	0.3	0.1	1.8	1.4	-0.5	0.5
EE	0.2	4.7	0.8	1.1	2.6	1.1	3.6	10.7	10.4	6.8	9.4	5.6
EL	:	:	:	:	:	:	:	:	:	:	:	:
ES	0.7	-0.8	0.2	-0.3	0.7	-0.2	2.6	0.5	0.0	-0.3	-0.2	0.4
FR	0.7	0.7	0.6	0.8	0.4	0.6	1.0	1.9	2.1	3.1	2.6	2.5
IE	c	c	c	c	c	c	c	c	c	c	c	c
IT	c	c	c	c	c	c	c	c	c	c	c	c
CY	-0.7	1.9	-1.1	1.3	0.2	:	0.0	1.5	1.5	1.4	2.2	:
LV	4.6	8.4	3.9	3.4	-0.5	-5.6	18.9	13.5	19.5	23.2	16.8	-0.6
LT	1.6	-1.8	3.0	6.6	2.8	3.3	16.0	9.7	11.4	9.6	10.9	16.6
LU	1.7	1.4	1.2	0.3	-1.4	0.3	3.4	4.7	5.6	5.7	0.9	-0.7
HU	0.9	1.5	0.0	0.7	0.9	0.8	4.4	5.4	4.0	3.1	3.1	2.3
MT	-1.6	0.9	-6.1	1.8	-12.0	:	2.5	7.5	-9.2	-4.9	-15.3	:
NL	-0.7	-0.5	-0.4	-0.5	-0.5	c	-3.3	-2.5	-1.7	-2.0	-2.2	c
AT	9.1	0.6	-0.6	4.0	-1.7	0.1	0.3	0.0	0.2	13.5	2.2	3.6
PL	-0.5	-1.3	0.5	0.8	1.1	1.9	-0.7	-3.4	-2.2	-0.9	0.6	5.8
PT	-0.7	5.4	-3.4	0.1	1.2	-6.3	-2.6	3.5	0.7	1.2	3.2	-8.3
SI	0.0	-0.9	0.8	0.4	0.8	0.8	0.4	-0.3	0.1	0.3	1.1	2.8
SK	-1.4	-4.1	-0.1	0.2	-1.5	5.0	-10.4	-10.1	-7.1	-5.2	-7.0	4.5
FI	-3.1	2.0	-2.0	4.2	5.4	-5.1	-6.8	-9.3	-6.6	1.0	9.8	2.6
SE	2.5	-0.2	2.8	0.0	0.7	-2.9	-3.7	-3.8	2.9	5.1	3.6	0.2
UK	0.7	0.6	-0.3	-0.2	0.1	0.0	2.5	2.9	1.6	0.7	0.2	-0.3
BG	7.0	-6.0	-1.1	-1.2	4.5	15.2	23.4	7.7	-1.7	-1.8	-4.1	17.6
RO	5.4	6.2	4.9	11.6	0.6	-0.5	11.4	5.6	13.4	31.0	25.1	17.2

Table 6: EMPLOYMENT INDEX FOR HOTELS AND RESTAURANTS (NACE SECTION H), GROWTH RATES (%);
SOURCE: EUROSTAT STS

	Quarter on quarter growth rates, seasonally adj. data						Year on year growth rates, gross data					
	Q4-03	Q1-04	Q2-04	Q3-04	Q4-04	Q1-05	Q4-03	Q1-04	Q2-04	Q3-04	Q4-04	Q1-05
EU-25	-0.3	0.1	-0.2	-0.1	0.0	-0.2	-0.3	0.0	-0.5	-0.6	-0.2	-0.4
Euro-zone	-0.2	0.1	-0.2	0.0	0.3	-0.2	0.3	0.1	-0.2	-0.3	0.2	-0.2
BE	0.0	-0.4	:	:	:	:	1.1	-1.1	:	:	:	:
CZ	c	c	c	c	c	c	c	c	c	c	c	c
DK	-3.7	:	:	:	:	:	-2.5	:	:	:	:	:
DE	:	:	:	:	:	:	:	:	:	:	:	:
EE	0.8	-2.8	1.1	0.6	0.4	-2.0	2.7	-1.3	-1.2	-0.4	-0.8	-0.1
EL	:	:	:	:	:	:	:	:	:	:	:	:
ES	-0.2	0.2	0.2	0.5	0.5	0.3	1.5	1.1	0.6	0.7	1.4	1.5
FR	0.1	-0.2	0.1	0.0	-0.1	-0.1	-0.8	-0.7	-0.3	-0.2	-0.1	-0.2
IE	c	c	c	c	c	c	c	c	c	c	c	c
IT	c	c	c	c	c	c	c	c	c	c	c	c
CY	0.5	0.5	0.6	-0.1	-0.5	:	-0.9	1.0	3.2	2.2	-0.5	:
LV	1.3	0.8	1.4	-0.2	0.4	0.2	5.2	1.8	4.0	3.3	2.5	1.8
LT	-0.9	3.3	0.2	1.8	-0.7	1.0	2.0	3.6	3.8	4.4	4.6	2.3
LU	:	:	:	:	:	:	:	:	:	:	:	:
HU	-0.3	-0.7	0.7	-0.5	-0.3	0.7	-1.6	-0.6	-0.2	-0.8	-0.8	0.6
MT	:	:	:	:	:	:	:	:	:	:	:	:
NL	-0.5	-0.5	-0.6	-0.5	-0.4	c	-1.9	-2.0	-2.0	-2.0	-2.0	c
AT	0.6	-0.3	0.2	0.4	-0.7	-0.4	0.3	-0.7	-0.4	0.8	-0.5	-0.6
PL	0.1	0.7	-0.5	-1.1	-0.2	-0.3	-2.9	0.5	-0.1	-0.8	-1.1	-2.1
PT	-0.3	-2.4	-0.7	-0.6	-1.3	-1.0	-2.4	-5.3	-4.9	-3.9	-4.9	-3.5
SI	0.8	-1.0	-0.1	0.2	0.1	1.0	1.1	-0.1	-0.5	0.0	-0.7	1.4
SK	-1.6	0.4	-0.5	-2.0	-1.4	-0.4	-8.1	-4.2	-2.7	-3.8	-3.7	-4.3
FI	-0.2	0.7	-5.3	-0.1	4.1	0.5	5.8	3.4	0.4	-5.2	-1.6	-1.1
SE	0.0	-0.7	-1.6	1.2	-0.5	-1.0	-1.4	-1.6	-2.7	-1.0	-1.6	-1.9
UK	-0.5	-0.2	-0.7	0.0	0.2	0.6	-0.5	-0.6	-1.6	-1.4	-0.8	0.2
BG	1.0	-2.2	0.4	-1.3	-3.0	1.1	0.9	-1.7	0.3	-2.1	-6.1	-2.9
RO	-3.6	0.0	-2.8	-2.3	-0.4	1.6	-5.7	-5.3	-7.4	-8.4	-5.4	-3.9

Table 7: EMPLOYMENT INDEX FOR TRANSPORT AND COMMUNICATION (NACE SECTION I), GROWTH RATES (%);
SOURCE: EUROSTAT STS

Employment index for services (continued)

Contrasting with industrial employment, the employment index in the EU-25's service activities by and large increased during the first quarter of 2005 (compared to the previous quarter). Indeed, for the services activities shown in the Tables 4 to 8, only the transport and communication sector posted a contraction. Nonetheless, during the last quarter of 2004, all the service activities covered experienced growth, ranging from 0.3 % to 0.9 %, except transport and communication that remained unchanged; for each of the activities this represented a faster rise than during the first quarter of 2005. The pattern was somewhat different in the euro-zone as the index of employment generally fell or remained unchanged during the first quarter of 2005 (compared to the previous quarter), except for hotels and restaurants and business services. For all the activities growths have been lower during the first quarter of 2005 than for the previous quarter.

The EU-25's distribution sector, shown in Table 4, registered a 0.1 % increase in the employment index during the first quarter of 2005, following a more sustained development recorded during the last quarter of 2004 (0.6 %). This quarterly growth was the eighth consecutive positive rate of change registered in this

sector. Employment in the distribution sector grew at the fastest pace for Slovakia (6.4 %), Estonia (4.9 %) and Finland (1.0 %).

The hotel and restaurants sector in the EU-25 registered a 0.2 % rise in employment during the first quarter of 2005 (compared with the previous quarter), the lowest increase registered for some years. Nine of the Member States for which data are available had a higher growth in employment than the EU-25 average, up to 5.0 % in Slovakia (see Table 6).

The transport and communications sector reported employment falling by 0.2 % in the EU-25 between the last quarter of 2004 and the first quarter of 2005 (see Table 7). For several quarters, employment in this sector has been alternating between stability and moderate increases and decreases (by no more than 0.3 %).

The EU-25's business services sector was the most dynamic of the services activities in terms of employment, with a 0.5 % growth between the last quarter of 2004 and the first quarter of 2005 (see Table 8), the lowest increase in this sector nonetheless since the third quarter of 2003.

	Quarter on quarter growth rates, seasonally adj. data						Year on year growth rates, gross data					
	Q4-03	Q1-04	Q2-04	Q3-04	Q4-04	Q1-05	Q4-03	Q1-04	Q2-04	Q3-04	Q4-04	Q1-05
EU-25	0.6	0.7	1.0	0.8	0.9	0.5	1.5	2.0	2.9	3.2	3.6	3.3
Euro-zone	0.4	1.2	0.7	0.9	1.0	0.7	1.0	2.4	2.7	3.1	3.9	3.0
BE	-1.9	4.6	:	:	:	:	-10.7	2.6	:	:	:	:
CZ	c	c	c	c	c	c	c	c	c	c	c	c
DK	-0.4	:	:	:	:	:	-1.9	:	:	:	:	:
DE	:	:	:	:	:	:	:	:	:	:	:	:
EE	4.4	-1.2	2.4	5.2	3.3	-6.7	0.0	11.3	10.0	11.2	10.1	3.9
EL	:	:	:	:	:	:	:	:	:	:	:	:
ES	1.0	0.1	0.5	0.7	0.7	0.8	3.3	2.3	2.1	2.3	2.1	2.8
FR	0.9	0.1	0.7	0.6	0.7	0.3	0.0	0.6	1.7	2.3	2.2	2.4
IE	c	c	c	c	c	c	c	c	c	c	c	c
IT	c	c	c	c	c	c	c	c	c	c	c	c
CY	0.2	0.7	0.6	0.6	0.4	:	4.6	4.7	3.8	2.2	2.2	:
LV	4.5	8.4	3.1	2.8	1.6	-2.6	18.8	22.6	21.6	21.6	18.9	2.9
LT	5.0	-5.3	9.2	2.2	3.8	22.6	18.4	7.9	12.3	11.0	9.7	42.0
LU	:	:	:	:	:	:	:	:	:	:	:	:
HU	4.2	2.6	4.8	3.6	3.5	0.2	10.4	7.8	15.8	16.2	15.5	12.6
MT	:	:	:	:	:	:	:	:	:	:	:	:
NL	-1.0	-0.6	0.0	0.4	0.6	c	-3.1	-3.4	-2.8	-1.3	0.7	c
AT	1.8	1.4	2.4	1.6	0.2	0.5	3.6	3.8	5.7	7.5	5.7	4.8
PL	0.7	-1.6	1.4	0.4	0.8	0.2	2.0	0.9	1.3	0.8	1.0	2.7
PT	0.4	9.2	0.8	-1.5	2.3	-6.3	0.8	12.0	12.4	8.7	11.1	-4.9
SI	1.8	0.1	1.5	2.0	1.6	2.9	4.3	3.5	4.1	5.6	5.3	8.3
SK	1.1	2.4	1.8	2.6	2.2	2.1	-1.9	2.2	4.4	8.1	9.4	9.1
FI	0.3	-0.5	-0.3	1.8	-2.2	2.2	-1.0	-2.7	-1.8	1.5	-1.5	1.3
SE	-0.6	0.1	3.3	-1.2	2.3	0.1	-6.3	-5.0	0.3	1.6	4.6	4.6
UK	0.5	0.3	0.6	0.4	-0.2	0.9	2.7	1.9	1.7	1.9	1.2	1.8
BG	:	:	:	:	:	:	:	:	:	:	:	:
RO	:	:	:	:	:	:	:	:	:	:	:	:

Table 8: EMPLOYMENT INDEX FOR BUSINESS SERVICES (NACE DIVISIONS 72 AND 74),
GROWTH RATES (%); SOURCE: EUROSTAT STS

Hours worked index for total industry (excluding construction)

Figure 2 showed that the general downward trend in the evolution of the number of hours worked in the EU-25's industrial economy continued into the first quarter of 2005. The long term development in the euro-zone was very similar to that in the EU-25. The latest development showed nevertheless that the reduction of hours worked in the euro-zone was faster than for the EU-25 during the last three quarters up to the first quarter of 2005. As such between the last quarter of 2004 and the first quarter of 2005, the volume of hours worked went down by 0.3 % in the EU-25 while the equivalent decline was by 0.6 % in the euro-zone (see Figure 3).

The contraction in hours worked recorded in the EU-25's industrial economy was reflected among all of the MIGs between the final quarter of 2004 and the first quarter of 2005. As such the reduction of the volume of hours worked ranged from -0.1 % for consumer durables to -1.9 % for energy.

Across the Member States, all the countries for which data are available except Finland and the United Kingdom registered reductions in the number of hours worked in their industrial economies during the first quarter of 2005 (see Table 10). This contrasted with the previous quarter, when the volume of hours worked grew or remained stable for nine of the countries with available data.

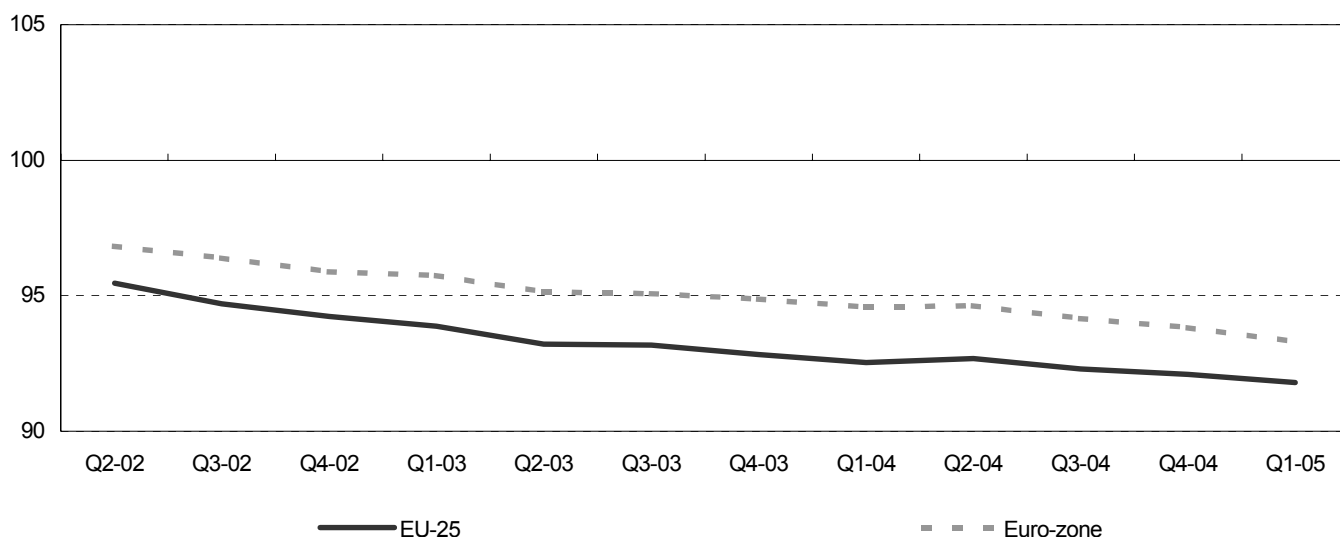


Figure 2: INDEX OF HOURS WORKED FOR TOTAL INDUSTRY (EXCLUDING CONSTRUCTION), EVOLUTION OVER TIME, SEASONALLY ADJUSTED DATA (2000=100); SOURCE: EUROSTAT STS

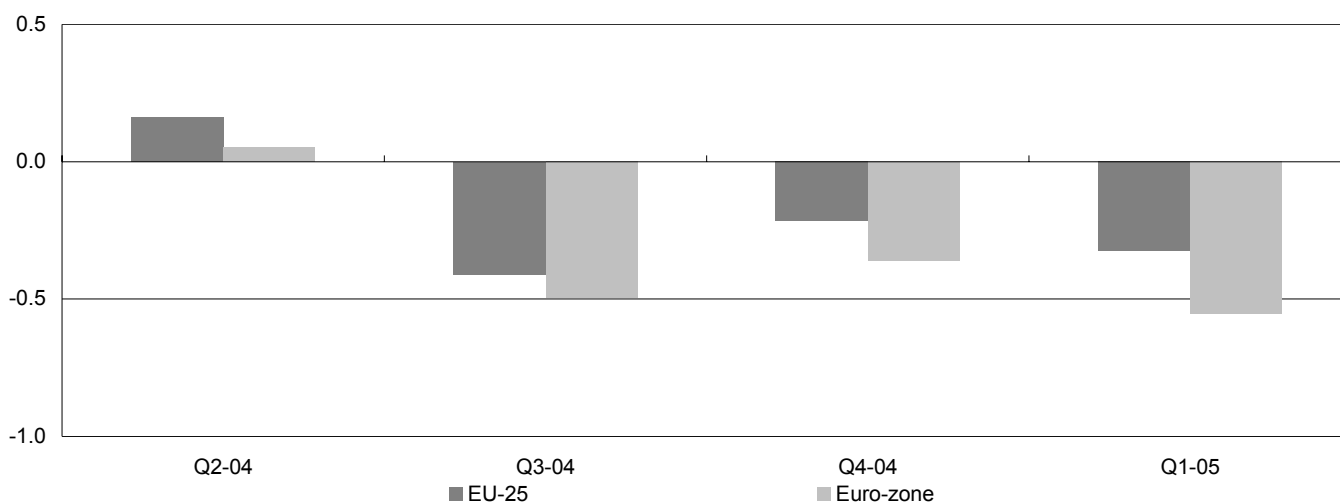


Figure 3: HOURS WORKED INDEX FOR TOTAL INDUSTRY (EXCLUDING CONSTRUCTION), GROWTH RATES, QUARTER COMPARED TO PREVIOUS QUARTER, SEASONALLY ADJUSTED (%); SOURCE: EUROSTAT STS

		Quarter on quarter growth rates, seasonally adjusted data						Year on year growth rates, gross data					
		Q4-03	Q1-04	Q2-04	Q3-04	Q4-04	Q1-05	Q4-03	Q1-04	Q2-04	Q3-04	Q4-04	Q1-05
Total industry (excluding construction)	EU-25	-0.4	-0.3	0.2	-0.4	-0.2	-0.3	-1.5	-1.0	-0.4	-0.8	-0.8	-2.3
	Euro-zone	-0.2	-0.3	0.1	-0.5	-0.4	-0.6	-1.0	-1.3	-0.3	-0.9	-1.0	-2.7
Energy	EU-25	-1.3	0.7	0.5	-1.3	0.9	-1.9	-2.1	0.5	0.6	-1.5	0.8	-3.4
	Euro-zone	-0.3	2.1	0.9	-1.1	0.7	-1.5	0.8	2.6	3.3	1.4	2.7	-2.3
Intermediate goods	EU-25	0.0	0.1	0.2	-0.2	-0.2	-0.4	-1.2	0.0	0.4	0.3	0.0	-1.6
	Euro-zone	0.1	0.2	0.1	-0.3	-0.3	-0.5	-0.8	0.0	0.7	0.2	-0.2	-2.4
Capital goods	EU-25	-0.1	0.1	0.4	-0.3	0.3	-0.4	-0.1	1.0	1.0	0.0	0.6	-1.6
	Euro-zone	0.3	0.0	0.3	-0.2	0.0	-0.2	0.8	0.9	1.0	0.3	0.1	-2.0
Consumer durables	EU-25	0.0	0.2	0.4	0.2	-0.2	-0.1	-2.0	-0.1	1.0	1.6	0.4	-2.2
	Euro-zone	-0.4	-0.2	0.0	-0.2	-0.1	-0.6	-1.9	-2.1	-1.1	-0.7	-0.1	-2.5
Consumer non-durables	EU-25	-0.7	-0.3	-0.2	-0.6	-0.6	-0.7	-2.0	-2.0	-0.9	-1.6	-1.6	-2.4
	Euro-zone	-0.4	-0.3	0.1	-0.6	-0.4	-0.5	-1.6	-1.6	-0.2	-1.0	-1.0	-2.2

Table 9: HOURS WORKED INDEX FOR THE MIGS, GROWTH RATES (%); SOURCE: EUROSTAT STS

Hours worked index for total industry (excluding construction) (continued)

	Quarter on quarter growth rates, seasonally adj. data						Year on year growth rates, gross data					
	Q4-03	Q1-04	Q2-04	Q3-04	Q4-04	Q1-05	Q4-03	Q1-04	Q2-04	Q3-04	Q4-04	Q1-05
EU-25	-0.4	-0.3	0.2	-0.4	-0.2	-0.3	-1.5	-1.0	-0.4	-0.8	-0.8	-2.3
Euro-zone	-0.2	-0.3	0.1	-0.5	-0.4	-0.6	-1.0	-1.3	-0.3	-0.9	-1.0	-2.7
BE	-1.2	0.7	-1.7	0.3	-1.9	-1.3	-4.0	0.3	-0.2	-1.9	-2.2	-5.0
CZ	-0.3	1.9	0.2	-1.0	0.4	-1.1	0.0	3.9	4.3	-0.3	1.6	-1.9
DK	4.7	:	:	:	:	:	3.9	:	:	:	:	:
DE	-1.2	0.4	0.9	-0.3	0.8	-1.7	-0.7	-0.3	0.4	-0.2	1.3	-3.1
EE	-0.8	3.2	0.0	1.1	0.5	-1.2	1.8	4.2	4.1	3.5	4.9	0.3
EL	:	:	:	:	:	:	:	:	:	:	:	:
ES	0.8	-1.7	0.5	0.5	-3.0	-1.6	-0.3	-2.0	0.8	0.3	-3.7	-3.7
FR	-0.6	-0.6	-0.5	-0.5	-0.5	-0.6	-2.3	-2.3	-2.3	-2.3	-2.1	-2.1
IE	-0.6	-0.8	-0.9	-1.9	-1.1	-2.7	-1.8	-3.6	-3.1	-4.6	-4.1	-6.9
IT	0.2	-0.4	-0.1	-0.2	0.0	-0.8	3.7	6.2	4.4	2.2	2.3	-0.5
CY	0.2	2.2	-1.7	0.1	1.5	:	0.3	1.5	0.1	0.7	2.0	:
LV	-1.1	4.7	-3.5	0.7	1.2	-5.3	2.8	5.6	1.4	0.6	3.0	-6.9
LT	0.1	0.3	-0.6	0.5	0.2	-2.1	7.3	2.9	1.4	0.3	0.4	-2.1
LU	-0.4	0.8	-1.0	1.3	-1.7	-3.7	0.5	1.4	0.5	0.3	-1.0	-5.1
HU	0.0	0.5	-0.8	-0.7	-0.3	-1.8	-0.1	-0.2	0.0	-1.3	-1.1	-4.7
MT	-1.7	-1.9	-1.1	-0.7	5.6	-9.0	1.4	-8.9	-9.2	-5.3	1.8	-5.7
NL	-0.9	-1.0	-0.9	-0.7	-0.6	c	-3.3	-3.7	-3.7	-3.6	-3.3	c
AT	0.3	-0.6	1.5	0.9	-1.4	-1.8	1.2	0.4	1.9	1.8	-0.6	-1.8
PL	-0.9	2.3	-0.4	0.0	-1.0	-0.2	-4.2	1.7	0.9	1.3	0.4	-1.7
PT	-0.8	-0.7	0.6	-1.7	-2.7	-1.1	-5.1	-2.9	0.0	-3.1	-4.6	-5.5
SI	0.1	0.2	0.0	-0.4	-1.0	-1.6	0.4	1.3	-0.4	-0.2	-0.6	-2.1
SK	-0.1	0.9	1.6	0.5	1.1	-1.2	1.6	3.6	4.5	2.9	4.1	1.9
FI	1.0	-1.5	2.4	-1.6	-0.9	3.0	-3.2	-3.4	1.3	2.2	-0.1	-1.1
SE	c	c	c	c	c	c	c	c	c	c	c	c
UK	-1.4	-1.0	-0.8	-1.3	-0.7	0.1	-5.4	-5.0	-4.3	-3.3	-2.1	-0.6
BG	0.8	-0.1	-0.6	0.0	0.3	0.0	2.8	1.5	-0.7	-0.6	0.2	-0.4
RO	c	c	c	c	c	c	c	c	c	c	c	c

Table 10: HOURS WORKED INDEX FOR TOTAL INDUSTRY (EXCLUDING CONSTRUCTION), GROWTH RATES (%); SOURCE: EUROSTAT STS

Wages and salaries index for total industry (excluding construction)

While both the employment and the volume of hours worked showed long term downward trends, the development of the wages and salaries index in the EU-25's industrial economy continued to post an upward trend. Wages and salaries in the euro-zone developed in a very similar manner compared to the EU-25's trend (see Figure 4). Nonetheless, the increase was slightly faster for the EU-25 compared to the euro-zone (see Figure 5).

Wages and salaries grew between the last quarter of 2004 and the first quarter of 2005 by 0.4 % in the EU-25 for three of the five MIGs, namely intermediate goods, capital goods and consumer durables (see Table 11).

Wages and salaries rose in consumer non-durables by 0.3 % over the same time period, while energy was the only MIG to report losses (-0.1 %).

The evolution of wages and salaries for the industrial economy at a national level between the final quarter of 2004 and the first quarter of 2005 showed that all of the Member States with available data registered increases (see Table 12). Increases were recorded at the fastest pace in Slovakia (5.4 %) and for a group of countries the rise was 2.0 % or more, namely in France, Malta, Poland and Finland (from the highest to the lowest).

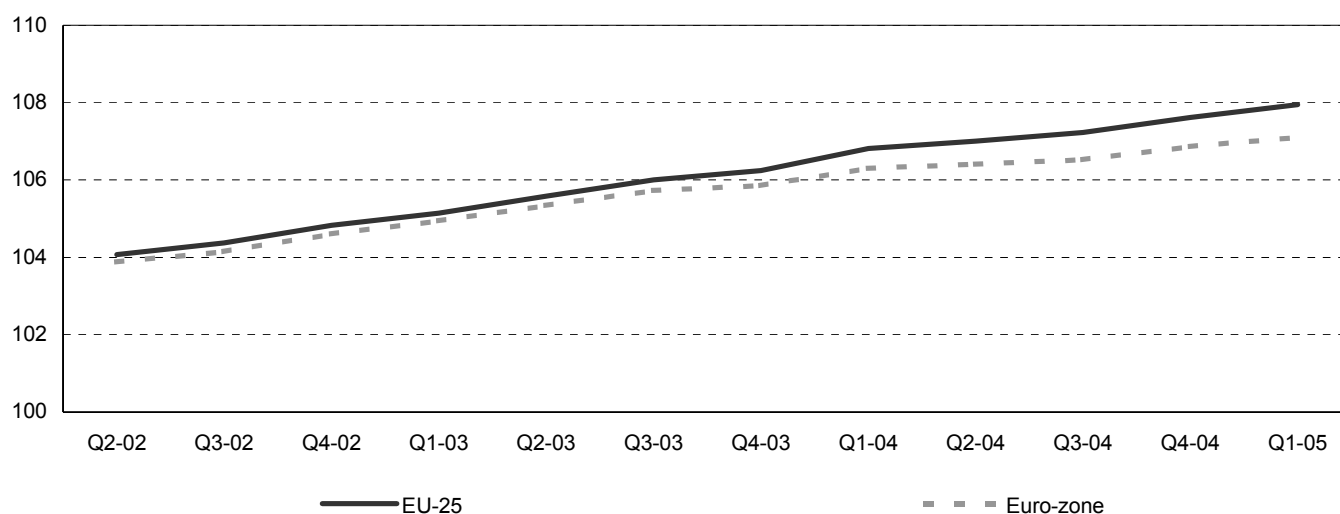


Figure 4: WAGES AND SALARIES INDEX FOR TOTAL INDUSTRY (EXCLUDING CONSTRUCTION), EVOLUTION OVER TIME, SEASONALLY ADJUSTED DATA (2000=100); SOURCE: EUROSTAT STS

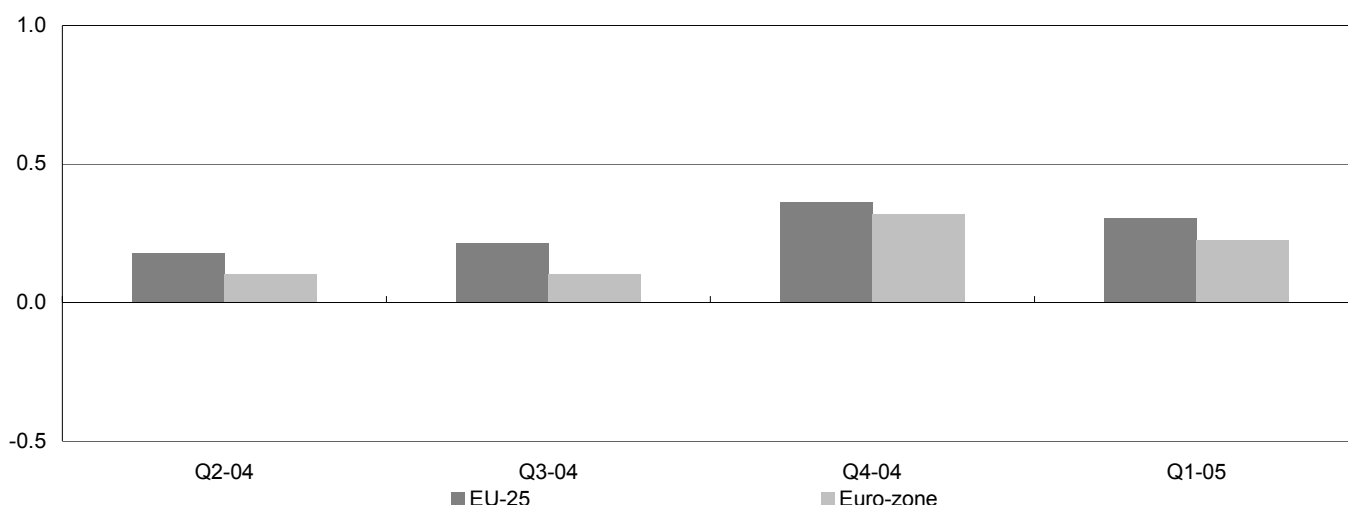


Figure 5: WAGES AND SALARIES INDEX FOR TOTAL INDUSTRY (EXCLUDING CONSTRUCTION), GROWTH RATES, QUARTER COMPARED TO PREVIOUS QUARTER, SEASONALLY ADJUSTED (%); SOURCE: EUROSTAT STS

Wages and salaries index for total industry (excluding construction) (continued)

		Quarter on quarter growth rates, seasonally adjusted data						Year on year growth rates, gross data					
		Q4-03	Q1-04	Q2-04	Q3-04	Q4-04	Q1-05	Q4-03	Q1-04	Q2-04	Q3-04	Q4-04	Q1-05
Total industry (excluding construction)	EU-25	0.2	0.5	0.2	0.2	0.4	0.3	1.1	1.9	1.4	1.0	1.3	1.2
	Euro-zone	0.1	0.4	0.1	0.1	0.3	0.2	1.0	1.6	1.0	0.5	0.9	0.9
Energy	EU-25	0.5	0.2	-0.2	-0.1	-0.1	-0.1	1.8	2.9	0.8	-0.2	-0.5	-0.5
	Euro-zone	0.4	0.1	-0.3	-0.3	-0.3	-0.2	1.7	2.3	0.8	-0.8	-1.2	-1.5
Intermediate goods	EU-25	0.2	0.6	0.3	0.3	0.3	0.4	1.2	1.8	1.6	1.4	1.4	1.3
	Euro-zone	0.1	0.5	0.2	0.2	0.3	0.3	0.9	1.5	1.3	1.0	1.2	1.1
Capital goods	EU-25	0.1	1.1	-0.1	0.2	0.8	0.4	1.7	2.6	1.4	1.1	2.1	1.5
	Euro-zone	0.0	0.9	-0.2	0.1	0.7	0.4	1.7	2.2	0.9	0.7	1.6	1.2
Consumer durables	EU-25	-0.1	0.2	0.2	0.1	0.1	0.4	-0.9	0.1	0.7	0.6	0.4	0.9
	Euro-zone	-0.3	0.0	0.1	0.1	0.1	0.4	-1.6	-0.7	-0.1	-0.1	0.0	0.7
Consumer non-durables	EU-25	0.0	0.4	0.1	0.1	0.2	0.3	0.7	1.6	1.1	0.6	0.7	0.8
	Euro-zone	-0.2	0.4	0.0	0.0	0.2	0.3	0.6	1.5	0.8	0.1	0.5	0.6

Table 11: WAGES AND SALARIES INDEX FOR THE MIGS, GROWTH RATES (%); SOURCE: EUROSTAT STS

	Quarter on quarter growth rates, seasonally adj. data						Year on year growth rates, gross data					
	Q4-03	Q1-04	Q2-04	Q3-04	Q4-04	Q1-05	Q4-03	Q1-04	Q2-04	Q3-04	Q4-04	Q1-05
EU-25	0.2	0.5	0.2	0.2	0.4	0.3	1.1	1.9	1.4	1.0	1.3	1.2
Euro-zone	0.1	0.4	0.1	0.1	0.3	0.2	1.0	1.6	1.0	0.5	0.9	0.9
BE	-1.3	0.0	-0.2	-1.4	0.6	0.1	-2.3	-1.6	3.2	-3.4	-1.2	0.6
CZ	2.6	3.4	-0.6	2.8	0.3	1.9	6.3	7.7	6.2	8.3	6.0	4.5
DK	0.1	:	:	:	:	:	-0.3	:	:	:	:	:
DE	-0.3	0.5	-0.5	-0.3	0.3	0.0	0.5	0.8	0.0	-0.8	0.0	-0.4
EE	0.8	2.8	0.4	2.9	3.6	1.7	8.5	10.3	9.3	7.1	10.0	8.9
EL	:	:	:	:	:	:	:	:	:	:	:	:
ES	0.6	0.8	0.5	1.1	0.4	0.7	2.8	3.1	2.3	2.9	2.7	2.6
FR	0.4	0.9	0.1	-0.7	0.8	2.5	0.5	1.5	1.2	0.6	0.8	2.8
IE	1.5	0.1	0.8	-0.4	1.1	1.7	1.0	1.1	2.3	2.1	1.6	3.2
IT	1.0	0.9	0.9	0.6	0.7	0.8	3.3	4.4	4.2	3.8	3.1	1.9
CY	1.0	-4.1	-0.4	:	:	:	6.1	-0.6	-3.1	:	:	:
LV	3.2	7.0	-0.1	2.0	5.9	0.3	11.3	16.0	10.5	12.5	15.4	8.1
LT	1.7	2.2	1.8	1.9	2.4	0.4	6.9	7.3	7.2	7.7	8.7	6.5
LU	1.4	0.3	0.6	-0.8	0.4	0.6	2.1	2.8	3.3	1.5	0.6	0.9
HU	2.1	3.3	1.4	1.2	1.2	0.1	8.1	10.5	9.0	8.3	7.5	3.8
MT	1.5	-3.8	-4.4	5.0	2.4	2.3	4.8	-6.1	-10.5	-2.0	-1.2	5.1
NL	-1.7	0.4	-0.4	-0.8	0.0	c	-1.4	-0.9	-1.7	-2.4	-1.6	c
AT	0.8	0.0	1.0	0.3	0.5	0.5	2.6	1.2	2.3	2.0	1.9	1.5
PL	1.5	1.6	-0.3	1.2	-0.2	2.2	2.3	5.8	4.4	4.1	2.3	3.1
PT	0.2	1.1	-0.7	-1.2	-0.5	0.2	-3.1	0.4	-0.2	-0.8	-1.3	-2.4
SI	2.1	1.4	1.6	1.9	1.7	1.6	7.0	7.9	6.5	7.2	6.8	7.1
SK	2.9	1.4	3.8	4.5	1.8	5.4	8.2	9.9	8.1	13.1	12.0	16.3
FI	0.4	1.3	0.0	1.6	1.1	2.0	2.1	4.1	1.9	4.2	4.5	4.7
SE	c	c	c	c	c	c	c	c	c	c	c	c
UK	:	:	:	:	:	:	:	:	:	:	:	:
BG	4.2	0.3	1.4	1.3	1.6	3.3	6.9	5.8	6.8	7.2	4.7	8.0
RO	3.6	5.4	2.4	4.1	3.3	3.2	18.3	17.0	15.4	16.4	16.1	13.8

Table 12: WAGES AND SALARIES INDEX FOR TOTAL INDUSTRY (EXCLUDING CONSTRUCTION), GROWTH RATES (%); SOURCE: EUROSTAT STS

Labour input indices for industrial Divisions of NACE

EU-25

NACE Rev. 1 heading (code)	Employment					Hours worked					Wages and salaries					
	Q1-04	Q2-04	Q3-04	Q4-04	Q1-05	Q1-04	Q2-04	Q3-04	Q4-04	Q1-05	Q1-04	Q2-04	Q3-04	Q4-04	Q1-05	
Mining of coal and lignite	10	79.4	78.3	76.9	75.7	74.4	80.8	80.1	76.3	78.7	75.9	84.9	84.2	82.0	81.2	81.5
Gas and oil extraction	11	86.0	85.6	87.4	87.5	88.7	90.9	90.4	88.3	91.3	:	:	:	:	:	:
Uranium & thorium mining	12	87.3	88.8	89.3	89.1	86.0	92.9	92.7	91.4	91.2	88.0	:	:	:	:	:
Mining of metal ores	13	:	:	:	:	:	88.1	86.1	87.8	88.3	84.2	:	:	:	:	:
Other non-metallic mining	14	89.5	89.4	89.9	90.6	90.5	84.9	84.2	84.5	84.2	83.1	105.1	105.4	105.1	105.3	105.7
Food and beverages	15	97.5	97.3	96.9	97.2	97.3	95.0	95.0	94.8	94.7	94.6	109.6	109.3	109.7	110.5	111.0
Tobacco	16	86.8	87.4	86.9	84.4	83.2	85.3	85.1	85.5	84.9	82.5	105.9	108.3	109.9	112.8	113.7
Textiles	17	82.0	80.9	80.0	79.8	79.3	87.2	87.8	85.4	84.2	83.1	97.4	97.4	96.8	96.1	95.3
Clothing	18	79.2	78.1	76.3	75.2	72.4	80.2	79.9	78.2	76.9	75.7	95.0	94.8	94.7	94.4	94.1
Leather products	19	85.8	83.6	81.0	79.9	78.5	80.0	78.9	76.5	75.0	72.4	102.9	103.2	103.3	103.4	103.1
Wood products	20	95.2	95.5	95.2	94.7	94.3	92.9	92.8	92.2	92.2	90.8	100.8	101.2	101.8	102.1	102.7
Pulp & paper	21	95.3	94.8	94.5	94.3	93.9	96.0	96.0	95.5	95.2	94.8	107.9	108.3	108.1	107.9	107.5
Publishing & printing	22	95.0	95.2	94.8	94.7	94.2	94.7	94.3	94.3	94.0	93.6	101.2	100.8	100.9	100.6	100.6
Fuel products	23	89.1	89.0	88.9	88.5	87.4	91.7	91.7	91.2	90.9	90.7	106.1	106.9	106.2	107.3	109.9
Chemicals	24	96.4	95.8	95.3	94.8	94.7	97.2	97.1	96.6	96.3	95.8	109.8	110.0	110.2	110.6	111.1
Rubber & plastic	25	100.7	100.0	99.6	99.5	99.3	99.1	100.1	99.1	97.8	97.9	109.0	109.9	110.2	110.6	111.0
Non-metallic minerals	26	92.6	91.9	91.4	91.7	91.2	93.0	92.6	92.0	91.3	90.7	101.5	101.6	101.6	101.5	102.0
Basic metals	27	90.0	89.6	89.6	90.0	89.4	89.3	89.7	89.9	90.1	89.5	104.1	104.1	104.3	105.1	106.9
Metal products	28	98.2	99.2	99.5	99.7	99.9	98.0	98.5	98.7	98.8	98.3	109.0	109.4	109.8	110.3	110.5
Machinery	29	94.6	93.9	93.4	93.5	93.9	95.7	96.0	95.5	95.7	94.8	107.5	107.8	108.0	109.0	109.2
Office machinery	30	77.8	76.6	76.9	76.7	76.7	82.1	81.5	78.6	77.1	75.0	86.3	85.5	86.1	85.5	87.1
Electrical machinery	31	94.4	94.6	95.1	95.2	94.6	96.9	97.2	96.5	96.0	95.4	108.2	107.8	107.7	108.6	109.8
Radio/TV/communication	32	84.5	84.1	83.3	83.1	82.6	85.1	86.0	85.3	84.8	82.9	100.9	101.0	101.3	101.1	102.2
Medical and optical	33	101.7	102.2	102.6	103.0	102.5	102.6	101.2	101.4	102.5	100.7	114.4	114.3	114.8	115.8	117.2
Motor vehicles	34	101.4	101.7	101.6	101.9	101.3	102.1	101.6	101.8	102.9	101.7	114.7	114.1	114.6	115.4	116.0
Other transport	35	94.4	93.9	93.6	93.4	92.4	93.1	93.9	93.1	93.9	93.0	109.6	110.4	110.2	111.3	112.3
Furniture & other manf.	36	96.1	95.4	95.2	94.7	94.9	94.2	93.7	94.4	93.6	92.5	100.4	100.2	100.6	100.5	100.8
Recycling	37	116.3	115.9	115.6	116.7	117.6	107.7	107.6	108.1	108.6	108.9	126.1	125.5	126.6	128.1	130.7
Energy/hot water supply	40	89.8	89.6	88.9	88.6	88.1	117.7	118.4	125.7	136.6	145.9	110.0	109.4	108.2	108.4	:
Water	41	100.8	99.7	99.2	99.5	98.4	111.5	112.5	116.7	122.5	127.3	115.5	115.8	117.0	117.7	:
Construction	45	102.6	101.6	101.7	102.5	101.9	96.7	96.5	96.6	96.5	96.1	105.9	106.2	106.6	106.8	107.0

EURO-ZONE

NACE Rev. 1 heading (code)	Employment					Hours worked					Wages and salaries					
	Q1-04	Q2-04	Q3-04	Q4-04	Q1-05	Q1-04	Q2-04	Q3-04	Q4-04	Q1-05	Q1-04	Q2-04	Q3-04	Q4-04	Q1-05	
Mining of coal and lignite	10	72.6	71.9	70.6	68.7	68.3	75.2	73.7	71.7	71.7	69.5	75.5	76.2	72.1	70.2	71.9
Gas and oil extraction	11	89.9	89.0	87.6	89.7	91.6	95.6	95.2	94.1	93.8	94.2	109.5	108.7	108.2	107.4	107.5
Uranium & thorium mining	12	:	:	:	:	:	:	:	:	:	:	:	:	:	:	:
Mining of metal ores	13	78.1	77.5	76.3	78.6	78.0	77.0	76.2	75.3	74.8	73.3	110.4	106.6	108.0	106.9	101.7
Other non-metallic mining	14	97.0	96.5	97.1	98.6	99.3	94.0	93.0	93.1	92.4	91.6	106.6	107.0	106.5	106.6	106.4
Food and beverages	15	100.5	100.5	100.4	101.0	100.7	97.7	97.8	97.7	97.7	97.7	109.4	109.4	109.6	109.9	110.4
Tobacco	16	90.3	91.3	91.8	89.2	87.8	87.3	86.6	86.5	85.8	84.6	104.2	106.1	107.3	110.4	111.4
Textiles	17	83.6	82.1	81.3	81.4	81.3	90.8	91.0	89.2	88.3	87.3	96.8	97.0	96.2	95.5	94.6
Clothing	18	84.1	83.1	80.9	79.5	77.4	85.9	86.9	84.7	83.6	82.8	95.0	94.8	94.7	94.6	94.4
Leather products	19	90.3	87.9	85.1	84.2	82.4	:	:	:	:	:	103.1	103.5	103.7	103.8	103.5
Wood products	20	93.8	93.8	93.7	93.3	92.8	89.7	89.4	88.6	87.5	86.5	99.2	99.3	99.6	100.0	100.3
Pulp & paper	21	96.7	96.1	95.6	95.6	95.7	97.5	97.5	96.7	96.2	96.0	107.8	108.0	107.7	107.8	107.4
Publishing & printing	22	95.8	96.1	95.6	95.6	95.1	95.7	95.5	95.1	94.7	94.3	101.5	101.1	100.9	100.7	100.6
Fuel products	23	95.6	96.1	96.4	95.8	95.4	99.0	98.8	98.4	97.4	97.6	106.2	107.0	106.0	106.8	108.7
Chemicals	24	98.3	97.7	97.3	96.9	96.7	99.5	99.5	98.8	98.7	98.6	108.9	109.1	109.2	109.6	110.1
Rubber & plastic	25	100.7	99.7	98.9	99.0	98.7	99.2	99.5	99.6	99.1	98.7	108.3	109.2	109.2	109.6	109.8
Non-metallic minerals	26	95.8	94.9	94.4	94.9	94.1	94.5	94.4	94.2	94.1	93.8	101.1	101.2	101.1	101.1	101.6
Basic metals	27	96.2	95.6	95.4	95.9	95.4	94.9	94.7	94.2	94.7	94.2	104.0	104.0	104.1	104.8	106.6
Metal products	28	99.4	100.2	100.5	100.5	100.1	99.1	99.6	99.5	99.6	99.2	108.5	108.7	108.9	109.4	109.5
Machinery	29	97.8	97.2	96.9	96.7	96.8	99.8	100.0	99.8	99.9	99.4	107.6	107.7	107.2	108.3	108.9
Office machinery	30	76.4	75.3	73.9	74.8	75.3	77.3	77.1	76.8	75.6	74.1	85.6	84.6	85.0	84.2	85.8
Electrical machinery	31	93.0	92.5	92.2	92.7	92.1	95.8	96.5	96.1	96.6	96.0	104.6	104.5	104.4	105.4	106.7
Radio/TV/communication	32	88.2	87.6	86.2	85.9	85.4	90.0	89.9	89.6	88.6	87.3	102.0	101.9	102.4	101.7	103.1
Medical and optical	33	104.8	105.1	105.9	106.4	105.2	104.6	104.0	105.3	106.1	105.5	114.6	114.5	114.7	115.6	117.2
Motor vehicles	34	101.5	101.6	101.5	101.4	100.3	102.4	102.4	102.2	102.4	101.3	114.0	113.6	114.0	114.7	115.0
Other transport	35	99.6	99.2	99.2	99.1	97.9	97.9	98.2	98.1	98.2	97.5	110.1	110.9	110.7	111.8	112.5
Furniture & other manf.	36	94.2	93.1	92.7	92.3	92.3	92.8	92.5	92.5	92.8	91.7	99.1	98.8	99.2	99.0	99.4
Recycling	37	117.3	116.7	116.3	117.3	117.2	109.0	108.5	108.4	109.4	108.4	124.2	123.9	125.0	126.3	128.9
Energy/hot water supply	40	91.0	90.9	90.3	90.5	90.4	141.9	139.1	140.7	158.0	193.8	109.7	108.9	107.0	107.2	107.9
Water	41	108.3	107.5	106.3	107.5	105.0	129.6	130.6	132.5	143.3	163.9	114.1	113.8	114.3	114.7	114.0
Construction	45	104.3	104.1	104.0	104.9	104.1	98.2	97.9	97.8	97.7	96.8	102.8	102.8	102.8	102.8	102.7

Table 13: INDICES IN THE EU, SEASONALLY ADJUSTED (2000=100); SOURCE: EUROSTAT STS

➤ ESSENTIAL INFORMATION – METHODOLOGICAL NOTES

Labour input indices shown in this publication represent in general the evolution of the labour market in the economy. Business statistics aim at providing information for the analysis of the economic cycle.

The **legal basis** for these labour input indicators is the Council Regulation No 1165/98 of 19th of May 1998 concerning short-term statistics.

The Short Term Business Statistics section of Eurostat (D3/EBT) compiles in particular the following three labour input indicators:

The index of the **number of persons employed** monitors the development of employment in industry and services in terms of total numbers. This indicator may be approximated by the number of employees.

The index of **hours worked** shows the development in the total volume of work done.

Lastly, it is the objective of the index of **wages and salaries** to show the evolution of the total amount of wages and salaries paid.

Employment index

The number of persons employed is defined as the total number of persons working in an observation unit (inclusive of working proprietors, partners working regularly in the unit and unpaid family workers), as well as persons who work outside the unit who belong to it and are paid by it (e.g. sales representatives, delivery personnel, repair and maintenance teams). It includes persons absent for a short period (e.g. sick leave, paid leave or special leave), and also those on strike, but not those absent for an indefinite period. It also includes part-time workers who are regarded as such under the laws of the country concerned and who are on the payroll, as well as seasonal workers, apprentices and home workers on the payroll. The number of persons employed excludes manpower supplied to the unit by other enterprises, persons carrying out repair and maintenance work in the observation unit on behalf of other enterprises, as well as those on compulsory military service.

Hours worked index

The total number of hours worked by employees represents the aggregate number of hours actually worked for the observation unit during the reference period. This variable excludes hours paid but not actually worked such as for annual leave, holidays and sickness leave. It also excludes meal breaks and commuting between home and work. Included are hours actually worked during normal working hours; hours worked in addition to those; time which is spent at the place of work on tasks such as preparing the site and time corresponding to short periods of rest at the work place. If the exact number of hours actually worked is not known, it may be estimated on the basis of the theoretical number of working hours and the average rate of absences (sickness, maternity, etc.).

Wages and salaries index

Wages and salaries include all gratuities, bonuses, ex gratia payments, 13th month payments, severance payments, lodging, transport, cost-of-living, and family allowances, tips, commission,

attendance fees, etc. received by employees, as well as taxes, social security contributions and other amounts payable by employees and withheld at source by the employer. Payments for agency workers are not included in wages and salaries.

The seasonally adjusted euro-zone and EU-25 series are calculated by aggregating the gross series supplied by each Member States and then performing an adjustment for seasonal effects on the resulting series. Therefore, the seasonally adjusted figures for total industry (excluding construction) are based directly on the gross series for European aggregates and not on an aggregation of the seasonally adjusted indices for individual Member States. Figures may therefore differ from those for the aggregation of the MIGs mainly for the following reasons:

a) the minimum threshold required for euro-zone and EU-25 totals to be calculated is 60%. Hence, depending on the countries that provide data, there may be different countries used from one aggregate to another and one series to another;

b) there may be a lack of coherence in Member States data between the MIGs and total industry that affects the overall coherence of the euro-zone and EU-25 data;

c) the euro-zone and EU-25 indices correspond exactly to the aggregation of the countries' respective indices; however, the data published are growth rates of these indices and as such this may create small discrepancies;

d) discrepancies may also be introduced by conversions done to create monthly and quarterly data in all presentations.

The **weights** for the index come from the Structural Business Statistics database or directly from Member States. Weights and base year are revised every five years. **The current base year is 2000.**

Member States shall transmit a gross index, although they may also transmit seasonally adjusted and trend-cycle indices. Eurostat publishes nationally adjusted data if available, otherwise, it performs the adjustment itself.

Gross data from Member States are aggregated in order to compile euro-zone and EU-25 series. Seasonally adjusted euro-zone and EU-25 series are then produced using the TRAMO & SEATS method. Missing components for euro-zone and EU-25 aggregates are estimated using an ARIMA method. When calculating the data for European aggregates (euro-zone and EU-25) Eurostat makes use of confidential data.

Abbreviations and symbols

: not available
c confidential

For more information please contact the short-term statistics section of unit D3, Eurostat:

Axel Behrens (Head of section)

Tel.: (352) 4301 35142

Fax: (352) 4301 34359

axel.behrens@cec.eu.int

Further information:

Reference publications

Title	Quarterly panorama of European business statistics
Subscription code	VPA000
Price	EUR 100

Databases

[EUROSTAT Website/Industry, trade and services/Industry, trade and services - horizontal view/Short-term Business Statistics - Monthly and Quarterly \(Industry, Construction, Retail Trade and Other Services\)/Industry/Labour input indices/Quarterly labour input indices](#)

Journalists can contact the media support service:

Bech Building Office A4/017
L - 2920 Luxembourg

Tel. (352) 4301 33408
Fax (352) 4301 35349

E-mail: eurostat-mediasupport@cec.eu.int

European Statistical Data Support:

Eurostat set up with the members of the 'European statistical system' a network of support centres, which will exist in nearly all Member States as well as in some EFTA countries.

Their mission is to provide help and guidance to Internet users of European statistical data.

Contact details for this support network can be found on our Internet site: www.europa.eu.int/comm/eurostat/

A list of worldwide sales outlets is available at the:
Office for Official Publications of the European Communities.

2, rue Mercier
L - 2985 Luxembourg

URL: <http://publications.eu.int>
E-mail: info-info-opoce@cec.eu.int
