

Contents

Table 1 - Labour force.....	3
Table 2 - Agricultural holdings...4	
Table 3 - Land use.....	5
Table 4 - Livestock.....	6
Table 5 - Non agricultural activity.....	7

Structure of agricultural holdings

Spain 2003

A farm structure survey was carried out in all EU Member States in 2003 (2002 in Poland). The detailed results are now available for Belgium, Denmark, Estonia, Spain, France, Ireland, Italy, Latvia, Lithuania, Luxembourg, Hungary, Malta, the Netherlands, Slovenia, Slovakia, Finland, Sweden and the United Kingdom. Results for the other Member States will become available in the course of the next months. This Statistics in Focus is part of a series of country-specific publications, all following the same structure.

* * *

In Spain, in October-December 2003 about 978 500 agricultural holdings had an economic size of at least 1 ESU (European Size Unit)*, which means a 10% decline compared to 2000.

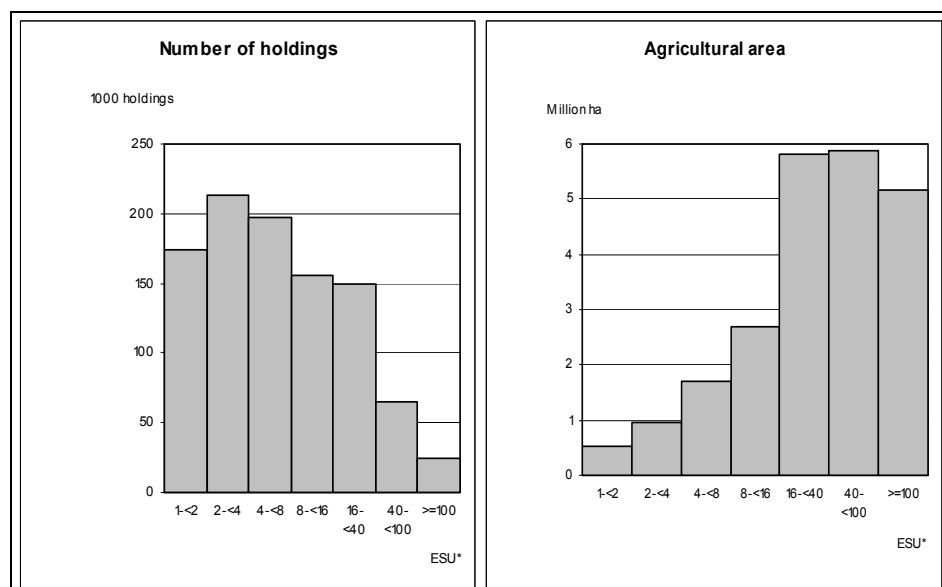
- These holdings employed 946 100 AWUs (annual work units), the equivalent of 946 100 persons working full time;
- they made use of 22.7 million ha of agricultural area, which is on average 23.2 hectare per holding.

Amongst these 978 500 agricultural holdings,

- 65% made use of less than one AWU, while 11% made use of 2 or more AWUs;
- 49% used less than 5 ha, while 5% used 100 ha or more;
- 13% were mixed holdings, while 87% were specialised: olives 19%, fruits and citrus fruits 17%, cereals, oil seed and protein crops 13%, vineyards 8%, various cattle farming 8%, various permanent crops combined 6%, horticulture 5% (of which 47% under glass), sheep, goats and other grazing livestock 5%, field cropping 4% and pigs and poultry 2%;
- about 1% practised organic farming.

Amongst the 933 100 sole holders

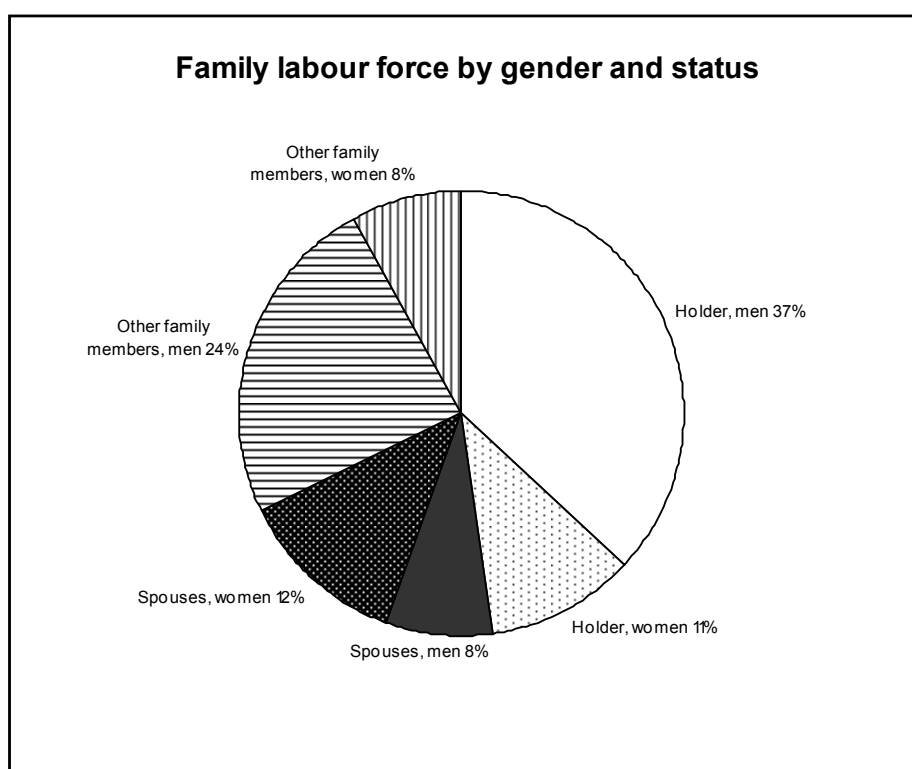
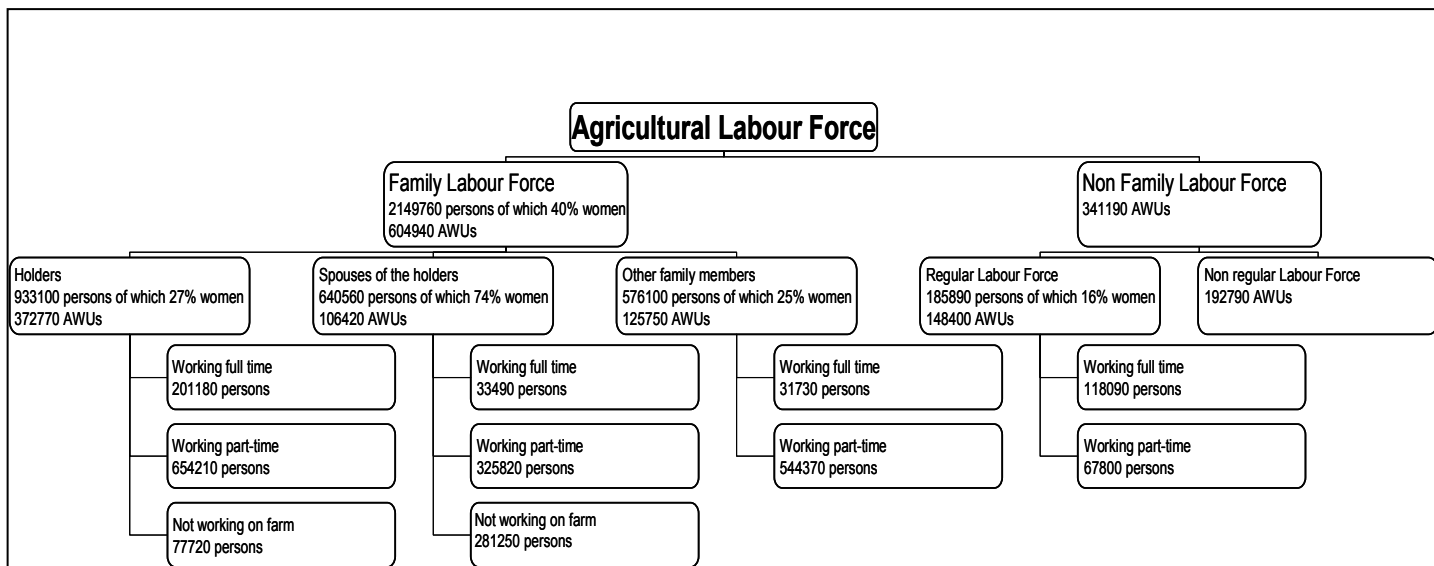
- 27% were women;
- 56% were aged 55 or more, and only 7% younger than 35 years;
- 28% had another gainful activity as major occupation.



* ESU measures the economic size of the holdings (see methodological notes).



Spain, 2003 – Holdings of at least 1 ESU



Symbols : not available 0 less than half of the unit or nil

Economic size (ESU)	<1	>=1	1-<2	2-<4	4-<8	8-<16	16-<40	40-<100	>=100
Total labour force									
1000 annual work units	51.6	946.1	72.2	98.4	124.7	139.7	207.0	144.6	159.6
Family labour force									
1000 persons	310.1	2149.8	374.8	483.7	459.3	361.5	322.6	120.4	27.5
1000 annual work units	47.5	604.9	68.1	89.9	108.6	117.0	145.8	61.1	14.4
Non-family labour regularly employed									
1000 persons	8.7	185.9	3.5	4.2	8.6	12.2	33.7	49.7	74.0
1000 annual work units	2.2	148.4	1.2	1.6	4.0	7.5	24.9	41.8	67.3
Non regular non family labour force									
1000 annual work units	2.0	192.8	2.9	6.9	12.1	15.2	36.2	41.6	77.8
Holding managers (1000)	162.3	978.5	174.5	212.8	196.8	155.8	149.0	65.1	24.5
- women (%)	27.8	17.6	23.7	21.7	17.8	15.8	11.5	8.5	8.9
- part-time - under 50 % (%)	89.2	63.5	83.5	83.2	72.9	55.6	32.7	22.5	20.8
- 50 % and over (%)	7.8	12.6	9.3	9.6	12.9	15.2	16.1	15.0	14.0
Sole/main holders (1000)	156.5	933.1	173.2	210.8	193.9	152.4	139.6	51.4	11.9
- women (%)	34.8	26.8	33.2	31.7	27.6	24.7	17.6	15.4	19.2
- distribution by age (%)									
- under 35 years	3.1	6.7	4.3	4.9	6.2	8.4	9.7	11.4	7.0
- from 35 to 44 years	8.1	16.0	12.2	12.8	15.9	16.2	22.4	23.2	21.8
- from 45 to 54 years	14.7	21.2	18.7	18.9	21.6	22.8	23.5	25.0	26.0
- from 55 to 64 years	22.8	25.4	22.9	25.6	23.7	27.4	28.3	25.6	26.6
- 65 years and over	51.3	30.7	41.9	37.8	32.6	25.3	16.0	14.9	18.6
- part-time - under 50 % (%)	82.7	58.6	75.6	74.3	65.6	50.6	29.7	20.1	23.8
- 50 % and over (%)	7.4	11.5	8.1	8.8	12.1	14.2	15.5	13.5	12.4
- with another gainful activity ¹ (%)	29.4	32.0	39.0	37.9	39.0	30.2	16.5	12.7	14.3
- as main occupation	28.3	27.6	36.8	35.3	34.3	23.6	11.2	6.9	7.8
- as a subsidiary occupation	1.1	4.3	2.3	2.6	4.8	6.6	5.4	5.8	6.5
Spouse of sole holder (1000)	100.0	640.6	112.9	144.2	138.4	103.1	97.0	36.4	8.4
- women (%)	67.9	73.9	68.8	68.8	72.4	75.7	82.4	86.2	82.9
- distribution by age (%)									
- under 35 years	2.4	5.6	2.5	3.4	5.7	7.1	9.7	7.9	8.4
- from 35 to 54 years	29.2	42.9	35.4	39.4	41.0	45.4	50.7	57.2	54.0
- 55 years and over	68.4	51.5	62.1	57.2	53.3	47.5	39.6	34.9	37.6
- part-time - under 50 % (%)	44.6	44.5	47.1	48.9	48.8	42.8	36.8	32.4	28.1
- 50 % and over (%)	4.3	6.3	5.8	4.5	5.3	7.2	9.1	9.0	9.4
- with another gainful activity (%)	22.6	26.5	26.6	27.9	28.3	26.9	23.8	19.9	23.0
- as main occupation	21.6	24.3	24.2	27.1	25.8	23.8	21.7	17.6	21.4
- as a subsidiary occupation	1.1	2.1	2.4	0.8	2.6	3.1	2.1	2.2	1.7
Other members of the holder's family working on the holding (1000)	53.6	576.1	88.7	128.7	126.9	106.0	86.0	32.6	7.2
- women (%)	28.5	25.4	28.5	26.8	22.9	26.3	25.7	19.5	19.2
- part-time - under 50 % (%)	93.5	88.6	93.9	94.8	92.4	90.4	77.8	64.6	53.1
- 50 % and over (%)	5.3	5.9	4.2	3.6	4.8	5.4	10.1	13.1	14.4
- with another gainful activity (%)	59.6	58.4	64.7	66.6	62.7	55.7	47.4	36.3	32.1

¹ Only holders being also farm managers.

Symbols : not available 0 less than half of the unit or nil

Economic size (ESU)	<1	>=1	1-<2	2-<4	4-<8	8-<16	16-<40	40-<100	>=100
Holdings									
- total number (1000)	162.3	978.5	174.5	212.8	196.8	155.8	149.0	65.1	24.5
- by legal personality of the holder (%)									
- sole holder	96.4	95.4	99.2	99.1	98.5	97.8	93.7	78.9	48.6
- legal person	3.6	4.6	0.8	0.9	1.5	2.2	6.3	21.1	51.4
- group holders	0	0	0	0	0	0	0	0	0
- by employed labour force (%)									
- under 1 AWU	91.9	64.5	87.3	86.2	76.8	58.3	30.0	12.1	4.5
- from 1 to less than 2 AWU	7.3	24.4	10.5	11.5	18.9	33.3	49.4	43.2	21.2
- from 2 to less than 3 AWU	0.7	7.2	2.0	2.1	3.8	7.1	15.1	25.9	19.3
- 3 AWU and over	0.1	3.9	0.2	0.2	0.6	1.3	5.6	18.8	55.0
- by agricultural area (%)									
- under 5 ha	88.5	49.4	88.2	74.8	49.3	25.6	15.0	10.9	16.1
- from 5 to less than 20 ha	7.7	29.4	11.2	23.4	40.8	48.1	33.8	16.0	10.7
- from 20 to less than 50 ha	1.3	11.4	0.4	1.5	9.1	19.8	26.5	24.6	13.8
- from 50 to less than 100 ha	0.6	5.0	0.1	0.2	0.7	5.4	15.2	18.4	13.8
- 100 ha and over	1.9	4.8	0.1	0.1	0.2	1.1	9.5	30.1	45.5
- by livestock size (%)									
- without livestock	70.2	71.2	72.6	77.0	76.8	72.5	64.0	54.2	45.5
- under 10 LSU ⁺	29.7	13.7	26.9	19.0	11.7	7.1	5.8	5.1	2.3
- from 10 to less than 20 LSU	0.1	3.9	0.5	3.7	6.8	7.6	2.0	1.8	0.5
- from 20 to less than 50 LSU	0	5.6	0.1	0.3	4.6	10.5	16.6	5.2	1.6
- from 50 to less than 100 LSU	0	2.8	0	0	0.1	2.2	9.4	14.2	2.8
- 100 LSU and over	0	2.8	0	0	0	0.1	2.2	19.4	47.3
- by farm type (%)									
... specialist cereals, oil seed and protein crops	8.3	12.5	9.1	8.8	12.2	16.3	16.5	17.7	9.5
... general field cropping	2.5	3.6	2.6	2.7	2.6	3.6	5.7	6.8	7.1
... specialist horticulture	1.6	5.1	1.7	3.1	5.4	7.0	8.2	7.9	8.5
... specialist vineyard	2.6	8.2	6.8	7.5	10.2	9.8	8.3	5.8	3.7
... specialist fruit and citrus fruit	17.0	17.3	21.7	23.0	20.0	14.9	9.5	6.4	6.3
... specialist olives	15.6	18.8	23.8	24.8	20.4	16.5	10.5	9.5	9.4
... various permanent crops combined	5.1	6.3	7.8	8.9	6.4	5.6	4.0	2.5	2.0
... specialist dairy farming	0.5	3.6	0.9	1.2	2.1	5.5	8.7	6.8	3.4
... specialist cattle – rearing and fattening	4.0	4.2	4.6	4.6	5.6	4.4	2.8	1.8	0.7
... cattle – dairy farming, rearing and fattening combined	0	0.4	0.4	0.5	0.6	0.4	0.2	0.1	0.1
... sheep, goats and other grazing livestock	12.7	4.9	3.5	3.2	3.3	6.0	8.6	8.1	3.4
... specialist granivores	1.3	2.3	0.6	0.4	0.5	0.8	2.7	10.6	30.1
... mixed cropping	4.8	6.7	6.8	6.0	7.2	5.7	7.8	7.1	7.1
... mixed livestock, mainly grazing livestock	2.8	1.7	3.5	2.2	1.3	0.7	0.8	1.1	1.0
... mixed livestock, mainly granivores	3.7	0.8	1.8	0.4	0.2	0.5	0.8	2.0	2.4
... field crops – grazing livestock combined	1.5	1.7	1.5	1.0	0.9	1.3	2.8	4.0	3.4
... various crops and livestock combined	3.8	1.8	2.8	1.8	1.3	1.0	2.1	1.8	2.0
- by farming methods (%)									
- organic farming	0.3	1.0	0.2	0.7	0.5	1.1	1.9	2.8	2.5
- irrigating	28.0	48.1	43.0	46.9	48.1	50.9	49.1	54.0	57.1
- with crops under glass	0.2	3.4	0.3	0.7	3.5	5.8	6.8	6.1	4.8
- % in less favoured or mountain area	67.7	64.8	63.7	64.4	67.3	64.5	66.4	63.3	54.1

+ LSU : Livestock Unit

Symbols : not available 0 less than half of the unit or nil

Economic size (ESU)	<1	>=1	1-<2	2-<4	4-<8	8-<16	16-<40	40-<100	>=100
Area	(1000 ha)								
• Total area of agricultural holdings	4921.4	28392.8	892.5	1344.1	2294.6	3397.8	6849.5	7161.4	6453.0
• H. Other area	2474.8	5664.1	381.5	393.1	589.9	700.4	1042.9	1270.4	1285.8
Wooded area	1491.7	3082.8	213.2	172.0	363.8	375.5	591.3	675.8	691.2
• Agricultural area	2446.6	22728.7	510.9	950.9	1704.7	2697.4	5806.5	5891.0	5167.3
- D. Arable land	83.7	12214.6	126.5	289.8	695.2	1330.1	3338.7	3612.5	2821.7
Cereals	21.9	7088.8	73.4	166.4	415.9	805.3	1988.6	2124.9	1514.3
Common wheat and spelt	4.6	1320.2	15.3	27.4	91.8	159.0	373.8	401.9	250.9
Durum wheat	1.2	981.4	2.9	17.2	35.6	99.5	230.9	265.2	330.2
Rye	0.2	126.2	2.1	3.0	8.1	20.3	37.4	36.4	18.9
Barley	11.2	3331.5	37.4	84.7	223.1	394.3	1002.3	1043.8	546.0
Oats	3.1	640.1	6.6	16.4	23.6	59.2	179.7	189.5	165.0
Grain maize	1.6	505.4	7.1	13.0	26.7	53.3	125.3	137.7	142.4
Dried pulses	0.4	491.3	4.2	11.3	24.6	37.9	119.6	166.3	127.4
Root crops	1.9	172.2	3.5	5.8	7.8	12.2	43.1	44.0	55.9
Potatoes	1.8	59.5	3.2	4.8	5.9	6.8	15.3	11.7	11.7
Sugar beet	0	109.2	0	0.3	1.1	5.1	27.2	32.1	43.4
Fodder root	0.1	3.5	0.3	0.7	0.8	0.3	0.5	0.1	0.8
Industrial crops	3.5	887.0	6.3	11.5	40.5	92.4	210.5	260.9	265.0
Tobacco	0	10.6	0	0	0.2	1.1	1.6	4.0	3.7
Hops	0	0.4	0	0.1	0.1	0.2	0	0	0
Cotton	0	85.6	0.1	0.5	1.2	3.7	18.2	16.4	45.5
Rape and turnip	0	5.8	0	0	0	1.2	0.5	1.9	2.2
Sunflower	2.7	741.5	5.7	9.6	37.7	84.7	170.2	233.6	200.0
Soya	0	0.4	0	0	0	0	0	0	0.3
Fresh vegetables, melons, strawberry	1.1	285.3	2.9	7.2	13.9	22.0	53.2	58.2	127.9
outside	1.1	240.5	2.9	7.0	11.8	15.6	39.5	48.1	115.6
under glass	0	44.8	0	0.2	2.1	6.3	13.7	10.2	12.3
Flower and ornamental plants	0	6.1	0	0	0.3	0.5	1.2	1.3	2.7
outside	0	3.7	0	0	0	0.2	0.6	0.8	2.0
under glass	0	2.5	0	0	0.3	0.2	0.6	0.6	0.7
Fodder plants	8.5	716.6	13.2	28.7	58.1	89.5	192.7	194.2	140.1
Fallow land	46.3	2565.9	22.9	58.9	134.0	270.3	729.6	762.0	588.2
- E. Kitchen garden	1.1	3.3	0.9	0.8	0.6	0.5	0.4	0.2	0
- F. Permanent pasture and meadows	2300.2	6226.0	224.9	302.4	467.7	679.6	1483.1	1529.0	1539.3
- G. Permanent crops	61.6	4284.7	158.7	357.9	541.2	687.2	984.2	749.2	806.2
Fruit and berry plantation	21.3	800.9	41.3	87.1	124.3	138.1	194.7	107.8	107.6
Citrus plantation	2.3	271.2	9.4	23.5	38.0	43.7	49.7	35.9	70.9
Olive trees	33.1	2171.3	83.1	191.8	258.8	326.1	433.7	400.9	476.8
Vineyard	4.6	1027.3	23.9	55.0	119.3	177.9	303.9	201.7	145.5
Ratios									
Agricultural area per holding (ha)	15.1	23.2	2.9	4.5	8.7	17.3	39.0	90.5	211.1
Agricultural area... (%)									
... own farmed	94.8	66.6	93.0	86.3	80.2	73.3	58.3	56.8	72.9
... in less favoured or mountain area	91.2	76.5	78.3	77.1	79.4	78.1	79.7	78.4	68.5
... organic farmed	0.1	1.3	0.2	0.6	0.2	1.3	1.5	1.6	1.3
... irrigated	1.1	15.0	13.9	14.8	14.4	14.5	12.8	13.2	20.1
... under cover crop protecting soil	0	0	0	0	0	0	0	0	0

Symbols : not available 0 less than half of the unit or nil

Economic size (ESU)		<1	>=1	1-<2	2-<4	4-<8	8-<16	16-<40	40-<100	>=100
Total livestock	(1000 LSU)	67.4	14107.2	139.4	274.7	538.0	936.3	2336.9	3287.6	6594.3
of which grazing	(%)	78.7	46.7	82.9	88.1	90.3	90.1	82.4	53.6	18.5
Grazing livestock	(1000 heads)									
Equidae		24.6	215.5	26.6	38.9	32.6	40.3	36.2	22.2	18.7
Bovine animals										
Under 1 year		12.1	1821.1	32.8	77.2	182.5	263.6	524.9	437.3	302.8
From 1 to less than 2 years		2.9	704.3	6.4	15.2	47.5	99.1	183.3	196.4	156.4
Dairy cows		0.9	1095.5	4.8	12.5	34.9	121.8	391.4	326.9	203.2
Other cows		18.7	1720.7	58.7	120.8	240.4	286.2	428.1	321.7	264.8
Other bovine animals 2 years and older		3.1	593.8	9.7	23.8	58.7	79.6	136.5	152.0	133.4
Sheep		69.0	19901.4	137.1	331.0	621.2	1712.4	6184.7	6695.0	4220.1
Goats		11.3	2381.3	31.3	74.3	151.2	489.9	916.6	522.7	195.3
Granivores										
Pigs	(1000 heads)									
Piglets < 20 kg		2.3	5636.9	7.0	13.2	44.7	109.4	420.0	1433.3	3609.3
Breeding sows		2.3	3230.6	8.9	14.8	34.5	65.0	260.1	695.0	2152.4
Other pigs		26.0	12312.5	38.6	44.9	64.0	109.4	588.9	3039.1	8427.6
Poultry	(million heads)	0.4	179.2	0.5	0.7	0.7	1.0	5.0	18.9	152.4
Broilers		0.1	104.4	0.1	0.1	0.1	0.1	2.1	12.9	88.9
Laying hens		0.3	59.2	0.4	0.4	0.4	0.3	0.8	3.4	53.5
Other poultry		0	15.6	0	0.1	0.3	0.6	2.0	2.6	10.0
Rabbits, breeding females	(1000 heads)	12.1	1244.2	26.8	41.7	29.8	65.1	326.3	541.5	213.0
Beehives	(1000)	3.2	799.6	12.0	11.9	32.7	50.6	432.2	160.5	99.7
Total livestock per holding with...	(LSU/holding)									
Livestock		1.4	50.0	2.9	5.6	11.8	21.8	43.5	110.3	493.8
Grazing livestock		1.8	37.4	3.6	6.7	14.0	24.5	45.5	101.0	332.5
Bovine animals (cattle)		2.2	42.5	4.2	8.3	17.3	29.6	53.6	125.3	416.0
Cattle, other than cows		2.4	46.3	4.7	9.0	18.5	30.4	54.4	127.3	428.0
Granivores		1.2	54.5	2.6	5.1	10.4	18.8	40.9	121.7	590.3
Pigs		1.4	67.4	2.7	5.3	11.9	19.9	43.7	143.6	637.9
Average size of herds*	(head/holding)									
Equidae		1.8	3.5	2.2	2.9	3.0	4.1	3.9	4.5	9.6
Dairy cows		1.0	21.8	1.1	2.2	4.6	11.8	25.9	55.8	141.6
Other cows		1.7	20.7	3.2	6.5	13.6	22.7	41.9	76.2	152.2
Sheep		7.2	241.8	13.0	25.9	53.5	136.6	310.2	595.7	1159.7
Goats		4.0	63.0	6.4	12.8	24.8	79.4	93.0	133.2	175.9
Breeding sows		1.4	74.8	2.3	2.9	4.7	10.4	27.3	98.9	531.9
Other pigs > 20 kg		1.8	127.0	2.1	2.7	4.2	8.5	34.4	284.5	1418.1
Rabbits, breeding females		2.3	32.1	2.9	4.5	4.5	13.8	54.3	216.3	481.9
Laying hens	(1000/holding)	0	0.4	0	0	0	0	0	0.4	21.8
Broilers	(1000/holding)	0	1.7	0	0	0	0	0.2	3.4	29.5
Beehives	(hive/holding)	2.6	60.1	6.3	5.4	11.9	24.0	128.3	205.5	488.7

* number of animals of a given livestock category per holding with this kind of animals

Symbols : not available 0 less than half of the unit or nil

Economic size (ESU)	<1	>=1	1-<4	2-<4	4-<8	8-<16	16-<40	40-<100	>=100
Holdings with another gainful activity than agricultural production:									
(% all holdings)	1.2	2.4	1.4	1.6	2.6	3.1	3.0	3.5	5.3
Tourism	0.2	1.0	0.6	0.6	1.4	1.7	1.1	0.7	1.4
Handicraft	0	0.1	0	0	0.2	0	0.1	0	0
Processing of farm products	0.7	1.0	0.6	0.9	1.0	1.1	1.2	1.5	2.1
Wood processing	0.1	0	0	0	0	0	0.1	0	0.1
Aquaculture	0	0	0	0	0	0	0	0	0
Renewable energy production	0	0	0	0	0	0	0	0	0.1
Contractual work	0	0.2	0.1	0	0.1	0.2	0.3	1.0	1.4
Other gainful activities n.a.e	0.1	0.2	0.1	0.1	0.2	0.1	0.3	0.5	0.6

➤ METHODOLOGICAL NOTES

The survey on the structure of agricultural holdings in Spain was carried out between 1 October and 31 December 2003 on a sample base. Prior to this survey full-scale agricultural census had been conducted last time in 1999. The reference period of the farm structure survey 2003 was the production year 2003 which ended on 30 September 2003. However, for livestock the reference date was the day of the interview.

The target population was all holdings of the last agricultural census, which have exceeded one of the following thresholds: at least 1 ha UAA or at least 0.2 ha UAA under vegetables, flowers and ornamental plants, production under protection or irrigated fruit trees or nurseries or at least 1 LSU and 0.75 ESU. A stratified simple random sample was drawn. The stratification was made separately for each autonomous community (NUTS 2) based on type of farming and size of the holding (5 size-classes determined by using economic size, LSU, UAA, AWU, total area). In the strata, optimum allocation was applied. 5°481 holdings were included in an exhaustive stratum created with use of sigma-gap rule to each key variable. The total number of the sample is 53 859, but the 'daughter'-holdings of the sampled units were observed, as well.

The data are multi-level checked. Final non-response was about 1%; these questionnaires were imputed from last census data until the theoretical sample size was reached. Partly completed forms have been corrected with automatic imputation program using deducted information from the questionnaire itself or by hot deck matrices.

For each activity ('enterprise') on a farm (for instance wheat, dairy cow or vineyard), a **standard gross margin (SGM)** is estimated, based on the area (or the number of heads) and a regional coefficient. The sum of such margins in a farm is its **economic size**, expressed in **European Size Units (ESU)**. 1 ESU is equal to 1200 euros.

Due to differences in the coverage of units of less than 1 ESU across Member States, these data are not comparable between countries. That is why the present analysis and graphs focus on the holdings of at least one ESU.

Each farm is classified in the community typology by its economic size and its **type of farming**, depending on the share of each enterprise in its economic size. For instance, a farm where breeding sows account for more than 2/3 of the economic size is classified as *specialist pig rearing* (type 5011). Depending on the level of aggregation, farms are grouped into 8 to 70 types.

Annual working unit (AWU) means the labour force working yearly like a worker employed on full time basis, it is 1824 hours (228 working days of 8 working hours per day).

The date of extraction of the data used for this Statistics in Focus corresponds to the date of completion of the manuscript.

➤ REFERENCE PUBLICATIONS

[Metodología](#). Año 2003, Instituto Nacional de Estadística, Madrid, 2003

Encuesta sobre la estructura de las explotaciones agrícolas 2003, Notas de prensa, Instituto Nacional de Estadística, Madrid, February 2005

Results: [INEBASE/agricultura/encuesta sobre la estructura de las explotaciones agrícolas](#)

Website of the Instituto Nacional de Estadística: www.ine.es

Further information:

➤ **Databases**

[EUROSTAT website/Agriculture, forestry and fisheries/Agriculture/Structure of agricultural holdings](http://europa.eu.int/comm/eurostat/Agri/Structure_of_agricultural_holdings)

Journalists can contact the media support service:

Bech Building Office A4/017 • L-2920 Luxembourg • Tel. (352) 4301 33408 • Fax (352) 4301 35349 •

E-mail: eurostat-mediasupport@cec.eu.int

European Statistical Data Support:

Eurostat set up with the members of the 'European statistical system' a network of support centres, which will exist in nearly all Member States as well as in some EFTA countries.

Their mission is to provide help and guidance to Internet users of European statistical data.

The complete details concerning this support network can be found on our Internet site: www.europa.eu.int/comm/eurostat/

A list of worldwide sales outlets is available at the:

Office for Official Publications of the European Communities.

2, rue Mercier – L-2985 Luxembourg

URL: <http://publications.eu.int>

E-mail: info-info-opoce@cec.eu.int

BELGIEN/BELGIQUE/BELGIË - DANMARK - DEUTSCHLAND - EESTI – ELLÁDA - ESPAÑA - FRANCE - IRELAND - ITALIA - KYPROS/KIBRIS – LUXEMBOURG - MAGYARORSZÁG – MALTA - NEDERLAND - ÖSTERREICH - POLSKA - PORTUGAL - SLOVENIJA - SLOVENSKO - SUOMI/FINLAND - SVERIGE - UNITED KINGDOM - BALGARIJA - HRVATSKA - ÍSLAND – NORGE - SCHWEIZ/SUISSE/SVIZZERA - AUSTRALIA - BRASIL - CANADA - EGYPT - MALAYSIA - MÉXICO - SOUTH KOREA - SRI LANKA - T'AI-WAN - UNITED STATES OF AMERICA

This Statistics in Focus was compiled by György Benoist, Ulrich Eidmann and Pol Marquer (ESTAT E1).

ORIGINAL TEXT: English