

## Contents

Price Indices.....	2
Rates of Change.....	4
EEA Index Numbers and Rates of Change.....	6
COICOP/HICP Main categories.....	7

## Harmonized Indices of Consumer Prices November 2005

**Euro-zone\*** annual inflation, as measured by the Monetary Union Index of Consumer Prices (MUICP), was 2.3% in November 2005\*\*, down from 2.5% in October 2005. A year earlier the rate was 2.2%.

**EU** annual inflation, as measured by the European Index of Consumer Prices (EICP)\*\*\*, was 2.2% in November 2005, down from 2.4% in October 2005. A year earlier the rate was 2.1%.

**EEA** annual inflation, as measured by the European Economic Area Index of Consumer Prices (EEAICP), was 2.2% in November 2005.

In November 2005, the highest annual inflation rates in EU Member States were recorded in **Latvia** (7.5%), **Malta** (4.3%), **Estonia** (4.0%) **Luxembourg** and **Slovakia** (3.6% each); the lowest rates were observed in **Finland** (1.0%), **Poland** (1.1%), **Sweden** (1.2%), **Austria** and the **Netherlands** (1.6% each).

For the **USA\*\*\*\*** the annual inflation rate was 3.5% in November 2005, down from 4.3% in October 2005. For **Japan\*\*\*\*** no November data was available in time for publication.

The annual inflation rates for the **euro-zone\*\***, the **EU** and the latest available rates for the **USA\*\*\*\*** and **Japan\*\*\*\*** are shown in the graph below.

Methodological notes can be accessed via the Eurostat internet site under Publications/Methods and nomenclatures/Harmonized Indices of Consumer Prices – [Short guide for users](#) (issue date: 17/05/2004).

\* The euro-zone comprises: Belgium, Germany, Greece, Spain, France, Ireland, Italy, Luxembourg, the Netherlands, Austria, Portugal and Finland.

\*\* In the process of revision of the HICP before the implementation of the new reference period 2005=100, Spanish HICP 2005 weights and some Spanish HICP indices for the period January to October have been revised. The Spanish revisions have an impact on the Euro-zone, EU and EEA weights, and, in some cases, an impact on the index levels and rates of change for 2005.

\*\*\* The EICP (EICP='European Index of Consumer Prices' as defined in Council Regulation (EC) No 2494/95 of 23 October 1995) is the official EU aggregate. It covers 15 Member States until April 2004 and 25 Member States starting from May 2004. The ten new Member States are integrated into the EICP starting from May 2004 using a chain index formula.

\*\*\*\* For the USA and Japan the national CPIs are given, which are not strictly comparable with the HICPs.

Annual Rate of Change (%)

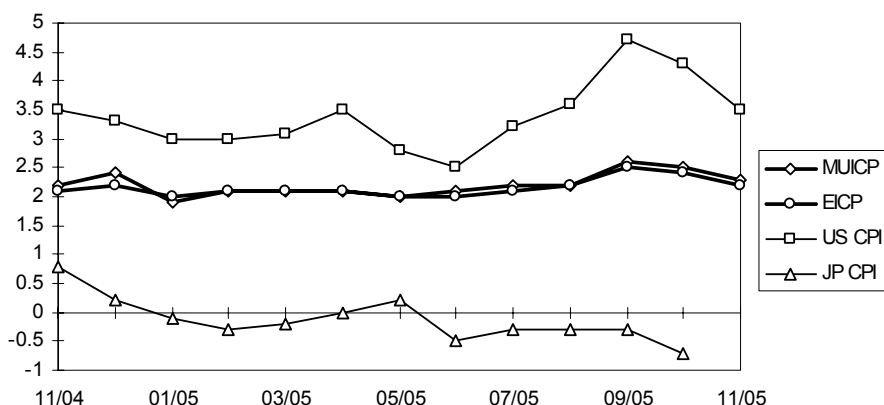


TABLE I  
HARMONIZED INDICES OF CONSUMER PRICES  
INDEX NUMBERS  
1996 = 100

	Euro-zone	EICP	BE	CZ	DK	DE	EE	EL	ES	FR	IE	IT	CY
<b>Annual Average Index</b>													
<b>2002</b>	110.9	110.8	110.7	133.0	113.4	107.6	139.4	124.8	116.8	108.3	121.5	113.8	117.5
<b>2003</b>	113.2	113.0	112.3	132.9	115.6	108.8	141.4	129.0	120.5	110.7	126.3	117.0	122.2
<b>2004</b>	115.7	115.3	114.4	136.3	116.7	110.7	145.6	133.0	124.1	113.3	129.2	119.7	124.5
<b>Monthly Index - 2003</b>													
<b>Jan</b>	111.9	111.7	110.0	132.6	114.5	108.2	141.1	126.4	118.5	109.3	123.9	115.2	119.5
<b>Feb</b>	112.4	112.2	112.3	132.8	115.3	108.8	141.5	126.1	118.7	110.1	125.1	114.7	119.7
<b>Mar</b>	113.1	112.8	112.6	132.8	116.2	109.0	141.8	129.3	119.6	110.6	126.0	116.1	122.4
<b>Apr</b>	113.2	113.0	112.4	133.0	116.2	108.7	141.6	129.6	120.6	110.4	126.6	117.0	123.3
<b>May</b>	113.1	112.9	112.0	133.0	115.9	108.4	141.3	130.2	120.5	110.3	126.4	117.2	123.0
<b>Jun</b>	113.2	112.9	112.4	133.1	115.9	108.6	140.8	130.0	120.6	110.5	126.5	117.3	122.4
<b>Jul</b>	113.1	112.8	111.1	133.0	115.2	108.9	141.0	127.3	119.9	110.4	126.0	117.2	120.2
<b>Aug</b>	113.3	113.1	113.0	132.9	115.1	109.0	141.0	127.3	120.5	110.7	126.8	116.8	120.9
<b>Sep</b>	113.7	113.5	113.2	132.4	116.0	108.8	141.4	129.9	120.8	111.2	127.0	117.7	123.4
<b>Oct</b>	113.8	113.6	112.8	132.6	115.7	108.7	141.7	130.4	121.6	111.4	127.0	118.1	124.4
<b>Nov</b>	113.9	113.6	113.0	133.0	115.9	108.5	141.6	130.6	122.0	111.5	127.0	118.4	124.2
<b>Dec</b>	114.2	113.9	113.0	133.2	115.7	109.5	141.4	131.4	122.2	111.6	127.5	118.4	122.9
<b>Monthly Index - 2004</b>													
<b>Jan</b>	114.0	113.7	111.5	135.3	115.6	109.5	142.0	130.3	121.2	111.7	126.7	117.7	121.4
<b>Feb</b>	114.2	113.9	113.6	135.4	116.1	109.7	142.3	129.4	121.3	112.2	127.8	117.5	121.4
<b>Mar</b>	115.0	114.6	113.7	135.6	116.7	110.2	142.8	133.1	122.2	112.7	128.3	118.8	122.5
<b>Apr</b>	115.5	115.0	114.3	135.7	116.8	110.5	143.7	133.6	123.9	113.0	128.7	119.7	123.4
<b>May</b>	115.9	115.5	114.7	136.5	117.2	110.7	146.5	134.2	124.6	113.4	129.0	119.9	124.5
<b>Jun</b>	115.9	115.5	114.6	136.7	116.9	110.7	147.0	133.9	124.8	113.5	129.7	120.1	125.3
<b>Jul</b>	115.7	115.3	113.4	137.1	116.5	111.1	146.6	131.3	123.9	113.3	129.2	119.8	123.7
<b>Aug</b>	115.9	115.5	115.3	137.1	116.1	111.3	146.5	130.9	124.5	113.5	130.0	119.6	124.3
<b>Sep</b>	116.1	115.7	115.2	136.1	117.0	110.9	146.8	133.7	124.7	113.6	130.1	120.2	125.6
<b>Oct</b>	116.5	116.1	115.8	136.7	117.5	111.1	147.3	134.7	126.0	114.0	130.2	120.6	126.9
<b>Nov</b>	116.4	116.0	115.6	136.5	117.1	110.7	147.9	134.8	126.3	114.0	130.5	120.8	127.4
<b>Dec</b>	116.9	116.5	115.2	136.5	116.8	111.9	148.2	135.5	126.2	114.2	130.6	121.2	127.7
<b>Monthly Index - 2005</b>													
<b>Jan</b>	116.2	115.9	113.7	137.3	116.5	111.3	147.9	135.8	125.0	113.5	129.3	120.0	124.8
<b>Feb</b>	116.6	116.3	116.2	137.3	117.3	111.7	148.8	133.5	125.3	114.3	130.4	119.9	124.3
<b>Mar</b>	117.4	117.0	116.9	137.2	118.2	112.1	149.7	136.9	126.4	115.1	130.7	121.3	125.4
<b>Apr</b>	117.9	117.5	117.1	137.6	118.8	112.1	150.4	138.0	128.2	115.3	131.5	122.3	126.8
<b>May</b>	118.2	117.8	117.3	137.7	118.7	112.5	150.7	138.5	128.4	115.3	131.8	122.7	127.1
<b>Jun</b>	118.3	117.9	117.7	138.5	118.9	112.7	151.7	138.2	128.8	115.5	132.2	122.7	127.2
<b>Jul</b>	118.2	117.8	116.5	139.0	118.7	113.2	152.3	136.4	128.0	115.3	132.1	122.4	125.3
<b>Aug</b>	118.5	118.1	118.6	139.0	118.8	113.4	152.7	135.6	128.6	115.8	132.7	122.2	126.2
<b>Sep</b>	119.1	118.6	118.6	138.8	119.8	113.8	154.0	138.8	129.4	116.3	133.7	122.9	128.3
<b>Oct</b>	119.4	118.9	118.4	140.1	119.7	113.8	153.9	139.7	130.4	116.3	133.7	123.7	129.7
<b>Nov</b>	119.1\$	118.7\$	118.4	139.5	119.3	113.2	153.8	139.4	130.6	116.0	133.4	123.7	130.0
<b>Dec</b>													

\* estimated    \$ provisional    # revised    : not available

TABLE I  
**HARMONIZED INDICES OF CONSUMER PRICES**  
**1996 = 100**  
INDEX NUMBERS

LV	LT	LU	HU	MT	NL	AT	PL	PT	SI	SK	FI	SE	UK	
<b>Annual Average Index</b>														
123.5	118.1	112.1	187.8	119.5	118.2	108.8	162.8	118.4	157.7	155.4	112.0	109.7	108.3	<b>2002</b>
127.1	116.9	115.0	196.6	121.8	120.8	110.2	164.0	122.3	166.7	168.5	113.5	112.3	109.8	<b>2003</b>
135.0	118.2	118.7	209.9	125.1	122.5	112.3	169.9	125.3	172.8	181.1	113.7	113.4	111.2	<b>2004</b>
<b>Monthly Index - 2003</b>														
125.4	117.6	113.2	192.3	117.6	119.2	109.7	163.3	120.7	162.7	165.2	112.5	111.0	108.6	<b>Jan</b>
125.8	117.4	114.5	193.8	118.1	120.1	109.9	163.5	120.7	163.6	166.1	113.5	112.1	109.0	<b>Feb</b>
126.5	117.7	115.1	195.5	119.0	121.2	110.2	164.0	120.8	164.7	167.2	113.9	112.8	109.4	<b>Mar</b>
126.9	117.8	114.9	195.5	122.2	121.3	110.1	164.3	121.8	165.7	167.3	113.8	112.4	109.7	<b>Apr</b>
127.2	117.6	114.7	195.7	123.0	121.2	109.9	164.3	122.7	166.6	167.3	113.7	112.3	109.7	<b>May</b>
128.0	117.7	114.7	196.4	123.2	120.6	109.9	164.1	122.7	167.4	167.8	113.6	112.1	109.6	<b>Jun</b>
127.6	116.8	113.8	196.9	123.9	120.5	109.8	163.3	122.5	168.5	167.7	113.0	111.9	109.5	<b>Jul</b>
126.2	116.0	115.2	196.3	124.1	120.8	110.1	162.6	122.6	168.1	169.5	113.2	111.8	109.9	<b>Aug</b>
126.8	115.6	116.0	197.4	123.8	121.8	110.4	163.4	122.9	167.9	170.6	113.8	112.7	110.2	<b>Sep</b>
127.9	115.7	115.5	198.9	124.5	121.6	110.4	164.4	123.2	168.1	170.9	113.7	112.8	110.4	<b>Oct</b>
128.6	116.2	116.0	200.2	120.4	121.1	110.6	165.0	123.3	168.4	171.2	113.6	112.5	110.3	<b>Nov</b>
128.7	116.2	116.2	200.5	121.6	120.4	110.9	165.3	123.4	168.4	171.6	113.7	112.7	110.7	<b>Dec</b>
<b>Monthly Index - 2004</b>														
130.4	116.2	115.8	205.1	120.9	121.0	111.0	166.2	123.4	169.2	178.9	113.4	112.4	110.1	<b>Jan</b>
131.2	116.0	117.3	207.4	121.0	121.7	111.5	166.4	123.2	169.5	180.1	113.9	112.3	110.4	<b>Feb</b>
132.5	116.6	117.4	208.5	121.5	122.7	111.9	167.0	123.5	170.5	180.5	113.4	113.3	110.6	<b>Mar</b>
133.3	117.0	118.0	209.1	126.6	123.1	111.8	168.1	124.7	171.6	180.5	113.4	113.6	111.0	<b>Apr</b>
135.0	118.8	118.6	211.0	126.8	123.3	112.2	170.0	125.7	173.1	181.1	113.6	114.0	111.4	<b>May</b>
135.8	118.9	119.1	211.1	127.2	122.4	112.4	171.2	127.2	173.9	181.5	113.5	113.4	111.3	<b>Jun</b>
136.1	118.9	118.1	211.1	127.8	122.0	112.1	171.0	126.1	174.8	181.8	113.2	113.2	111.0	<b>Jul</b>
136.0	118.5	119.4	210.4	127.2	122.2	112.5	170.5	125.6	174.3	181.6	113.5	113.1	111.3	<b>Aug</b>
136.6	119.1	119.6	210.6	127.8	123.2	112.4	171.0	125.5	173.6	181.8	114.0	114.0	111.4	<b>Sep</b>
137.1	119.3	120.2	211.6	127.8	123.4	113.0	172.0	126.1	173.8	182.1	114.4	114.4	111.7	<b>Oct</b>
137.8	119.6	120.6	211.7	122.7	122.9	113.2	172.5	126.5	174.8	181.9	113.8	113.7	111.9	<b>Nov</b>
138.2	119.5	120.3	211.6	123.9	121.9	113.7	172.5	126.6	174.0	181.6	113.8	113.7	112.5	<b>Dec</b>
<b>Monthly Index - 2005</b>														
139.1	119.5	119.1	213.2	123.2	122.5	113.7	172.5	125.9	173.1	184.7	113.2	113.0	111.9	<b>Jan</b>
140.4	119.7	121.1	214.4	124.0	123.5	114.1	172.5	125.8	174.3	184.9	113.9	113.6	112.2	<b>Feb</b>
141.2	120.4	121.5	215.4	124.6	124.5	114.6	172.6	126.3	176.1	184.9	114.4	113.9	112.7	<b>Mar</b>
142.7	120.8	122.4	217.0	129.1	124.7	114.4	173.3	127.2	176.2	185.3	114.7	114.1	113.1	<b>Apr</b>
143.8	121.1	123.0	218.3	129.9	124.6	114.4	173.8	127.9	176.8	185.5	114.3	114.2	113.5	<b>May</b>
144.7	121.3	122.9	218.9	129.9	124.2	114.7	173.6	128.0	176.9	186.2	114.6	114.3	113.5	<b>Jun</b>
144.7	121.1	122.8	218.7	130.0	123.8	114.4	173.5	128.5	178.3	185.6	114.2	114.0	113.6	<b>Jul</b>
144.5	121.2	124.5	217.7	130.4	124.2	114.6	173.6	128.7	177.4	185.5	114.6	114.2	114.0	<b>Aug</b>
146.7	122.2	125.2	218.1	130.4	125.3	115.3	174.2	128.9	179.1	186.0	115.3	115.2	114.2	<b>Sep</b>
147.7	122.9	126.2	218.2	131.6	125.3	115.3	174.7	129.4	179.4	188.5	115.3	115.4	114.3	<b>Oct</b>
148.2	123.0	124.9	218.6	128.0	124.9\$	115.0\$	174.4	129.7	178.4	188.5	114.9	115.1	114.3	<b>Nov</b>
														<b>Dec</b>

\* estimated    \$ provisional    # revised    : not available

TABLE II  
**HARMONIZED INDICES OF CONSUMER PRICES**  
**RATES OF CHANGE (%)**

	Euro-zone	EICP	BE	CZ	DK	DE	EE	EL	ES	FR	IE	IT	CY
<b>Annual Average Rate of Change</b>													
2002/12	2.3	2.1	1.6	1.4	2.4	1.3	3.6	3.9	3.6	1.9	4.7	2.6	2.8
2003/12	2.1	2.0	1.5	-0.1	2.0	1.0	1.4	3.4	3.1	2.2	4.0	2.8	4.0
2004/12	2.1	2.0	1.9	2.6	0.9	1.8	3.0	3.0	3.1	2.3	2.3	2.3	1.9
2005/11	2.2\$	2.2\$	2.5	1.6	1.6	1.9	4.2	3.5	3.3	1.9	2.2	2.2	2.2
<b>Annual Rate of Change - 2003</b>													
Jan	2.1	2.0	1.2	-0.7	2.6	0.9	2.5	3.3	3.8	1.9	4.7	2.9	4.5
Feb	2.4	2.3	1.6	-0.6	2.9	1.2	2.2	4.2	3.8	2.5	5.1	2.6	4.8
Mar	2.4	2.3	1.7	-0.6	2.8	1.2	2.2	3.9	3.7	2.6	4.9	2.9	6.3
Apr	2.1	2.0	1.4	-0.4	2.5	1.0	1.1	3.3	3.2	1.9	4.6	3.0	5.6
May	1.8	1.7	0.9	-0.3	2.1	0.6	0.7	3.5	2.7	1.8	3.9	2.9	4.9
Jun	1.9	1.8	1.5	0.0	2.0	0.9	0.4	3.6	2.8	1.9	3.8	2.9	3.7
Jul	1.9	1.8	1.4	-0.3	1.8	0.8	0.9	3.5	2.9	1.9	3.9	2.9	2.6
Aug	2.1	2.0	1.6	-0.2	1.5	1.1	1.4	3.3	3.1	2.0	3.9	2.7	2.4
Sep	2.2	2.0	1.7	0.0	1.7	1.1	1.5	3.3	3.0	2.3	3.8	3.0	3.3
Oct	2.0	1.9	1.4	0.5	1.1	1.1	1.2	3.2	2.7	2.3	3.3	2.8	3.7
Nov	2.2	2.0	1.8	0.9	1.4	1.3	1.2	3.2	2.9	2.5	3.3	2.8	3.8
Dec	2.0	1.8	1.7	1.0	1.2	1.1	1.2	3.1	2.7	2.4	2.9	2.5	2.2
<b>Annual Rate of Change - 2004</b>													
Jan	1.9	1.8	1.4	2.0	1.0	1.2	0.6	3.1	2.3	2.2	2.3	2.2	1.6
Feb	1.6	1.5	1.2	2.0	0.7	0.8	0.6	2.6	2.2	1.9	2.2	2.4	1.4
Mar	1.7	1.5	1.0	2.1	0.4	1.1	0.7	2.9	2.2	1.9	1.8	2.3	0.1
Apr	2.0	1.8	1.7	2.0	0.5	1.7	1.5	3.1	2.7	2.4	1.7	2.3	0.1
May	2.5	2.3	2.4	2.6	1.1	2.1	3.7	3.1	3.4	2.8	2.1	2.3	1.2
Jun	2.4	2.3	2.0	2.7	0.9	1.9	4.4	3.0	3.5	2.7	2.5	2.4	2.4
Jul	2.3	2.2	2.1	3.1	1.1	2.0	4.0	3.1	3.3	2.6	2.5	2.2	2.9
Aug	2.3	2.1	2.0	3.2	0.9	2.1	3.9	2.8	3.3	2.5	2.5	2.4	2.8
Sep	2.1	2.0	1.8	2.8	0.9	1.9	3.8	2.9	3.2	2.2	2.4	2.1	1.8
Oct	2.4	2.2	2.7	3.1	1.6	2.2	4.0	3.3	3.6	2.3	2.5	2.1	2.0
Nov	2.2	2.1	2.3	2.6	1.0	2.0	4.4	3.2	3.5	2.2	2.8	2.0	2.6
Dec	2.4	2.2	1.9	2.5	1.0	2.2	4.8	3.1	3.3	2.3	2.4	2.4	3.9
<b>Annual Rate of Change - 2005</b>													
Jan	1.9	2.0	2.0	1.5	0.8	1.6	4.2	4.2	3.1	1.6	2.1	2.0	2.8
Feb	2.1	2.1	2.3	1.4	1.0	1.8	4.6	3.2	3.3	1.9	2.0	2.0	2.4
Mar	2.1	2.1	2.8	1.2	1.3	1.7	4.8	2.9	3.4	2.1	1.9	2.1	2.4
Apr	2.1	2.1	2.4	1.4	1.7	1.4	4.7	3.3	3.5	2.0	2.2	2.2	2.8
May	2.0	2.0	2.3	0.9	1.3	1.6	2.9	3.2	3.0	1.7	2.2	2.3	2.1
Jun	2.1	2.0	2.7	1.3	1.7	1.8	3.2	3.2	3.2	1.8	1.9	2.2	1.5
Jul	2.2	2.1	2.7	1.4	1.9	1.9	3.9	3.9	3.3	1.8	2.2	2.2	1.3
Aug	2.2	2.2	2.9	1.4	2.3	1.9	4.2	3.6	3.3	2.0	2.1	2.2	1.5
Sep	2.6	2.5	3.0	2.0	2.4	2.6	4.9	3.8	3.8	2.4	2.8	2.2	2.1
Oct	2.5	2.4	2.2	2.5	1.9	2.4	4.5	3.7	3.5	2.0	2.7	2.6	2.2
Nov	2.3\$	2.2\$	2.4	2.2	1.9	2.3	4.0	3.4	3.4	1.8	2.2	2.4	2.0
Dec													

\* estimated    \$ provisional    # revised    : not available

TABLE II  
HARMONIZED INDICES OF CONSUMER PRICES  
RATES OF CHANGE (%)

LV	LT	LU	HU	MT	NL	AT	PL	PT	SI	SK	FI	SE	UK	
<b>Annual Average Rate of Change</b>														
2.0	0.4	2.1	5.2	2.6	3.9	1.7	1.9	3.7	7.5	3.5	2.0	2.0	1.3	2002/12
2.9	-1.1	2.5	4.7	1.9	2.2	1.3	0.7	3.3	5.7	8.4	1.3	2.3	1.4	2003/12
6.2	1.1	3.2	6.8	2.7	1.4	2.0	3.6	2.5	3.6	7.5	0.1	1.0	1.3	2004/12
6.9	2.7	3.8	3.7	2.4	1.4\$	2.2\$	2.5	2.1	2.5	2.9	0.7	0.8	2.0	2005/11
<b>Annual Rate of Change - 2003</b>														
1.5	-1.8	3.3	4.8	0.8	2.7	1.7	0.4	4.0	6.7	7.1	1.4	2.6	1.4	Jan
2.1	-1.8	3.2	4.6	2.1	2.9	1.8	0.4	4.1	6.4	7.4	2.1	3.3	1.6	Feb
2.2	-1.0	3.7	4.8	2.4	2.8	1.8	0.4	3.8	6.3	8.1	1.9	2.9	1.6	Mar
2.4	-0.8	3.0	3.9	1.9	2.2	1.3	0.1	3.7	5.4	7.7	1.3	2.3	1.5	Apr
2.5	-0.8	2.3	3.5	1.9	2.3	0.9	0.3	3.7	5.6	7.6	1.1	2.0	1.2	May
3.7	-0.3	2.0	4.4	2.2	2.1	1.0	0.6	3.4	6.2	8.3	1.2	2.0	1.1	Jun
3.7	-0.8	1.9	4.7	1.7	2.1	1.0	0.7	2.9	6.1	8.5	1.0	2.4	1.3	Jul
3.4	-0.9	2.3	4.7	1.8	2.2	1.0	0.6	2.9	5.7	9.0	1.2	2.2	1.4	Aug
3.2	-0.8	2.7	4.6	1.7	2.0	1.4	0.7	3.2	5.1	9.2	1.2	2.3	1.4	Sep
3.3	-1.3	1.8	4.8	2.6	1.9	1.1	1.0	2.8	4.9	9.3	0.9	2.0	1.4	Oct
3.7	-0.9	2.0	5.6	1.8	2.0	1.3	1.5	2.3	5.3	9.5	1.2	2.0	1.3	Nov
3.5	-1.3	2.4	5.6	2.4	1.6	1.3	1.6	2.3	4.7	9.4	1.2	1.8	1.3	Dec
<b>Annual Rate of Change - 2004</b>														
4.0	-1.2	2.3	6.7	2.8	1.5	1.2	1.8	2.2	4.0	8.3	0.8	1.3	1.4	Jan
4.3	-1.2	2.4	7.0	2.5	1.3	1.5	1.8	2.1	3.6	8.4	0.4	0.2	1.3	Feb
4.7	-0.9	2.0	6.6	2.1	1.2	1.5	1.8	2.2	3.5	8.0	-0.4	0.4	1.1	Mar
5.0	-0.7	2.7	7.0	3.6	1.5	1.5	2.3	2.4	3.6	7.9	-0.4	1.1	1.2	Apr
6.1	1.0	3.4	7.8	3.1	1.7	2.1	3.5	2.4	3.9	8.2	-0.1	1.5	1.5	May
6.1	1.0	3.8	7.5	3.2	1.5	2.3	4.3	3.7	3.9	8.2	-0.1	1.2	1.6	Jun
6.7	1.8	3.8	7.2	3.1	1.2	2.1	4.7	2.9	3.7	8.4	0.2	1.2	1.4	Jul
7.8	2.2	3.6	7.2	2.5	1.2	2.2	4.9	2.4	3.7	7.1	0.3	1.2	1.3	Aug
7.7	3.0	3.1	6.7	3.2	1.1	1.8	4.7	2.1	3.4	6.6	0.2	1.2	1.1	Sep
7.2	3.1	4.1	6.4	2.7	1.5	2.4	4.6	2.4	3.4	6.6	0.6	1.4	1.2	Oct
7.2	2.9	4.0	5.7	1.9	1.5	2.4	4.5	2.6	3.8	6.3	0.2	1.1	1.5	Nov
7.4	2.8	3.5	5.5	1.9	1.2	2.5	4.4	2.6	3.3	5.8	0.1	0.9	1.6	Dec
<b>Annual Rate of Change - 2005</b>														
6.7	2.8	2.8	3.9	1.9	1.2	2.4	3.8	2.0	2.3	3.2	-0.2	0.5	1.6	Jan
7.0	3.2	3.2	3.4	2.5	1.5	2.3	3.7	2.1	2.8	2.7	0.0	1.2	1.6	Feb
6.6	3.3	3.5	3.3	2.6	1.5	2.4	3.4	2.3	3.3	2.4	0.9	0.5	1.9	Mar
7.1	3.2	3.7	3.8	2.0	1.3	2.3	3.1	2.0	2.7	2.7	1.1	0.4	1.9	Apr
6.5	1.9	3.7	3.5	2.4	1.1	2.0	2.2	1.8	2.1	2.4	0.6	0.2	1.9	May
6.6	2.0	3.2	3.7	2.1	1.5	2.0	1.4	0.6	1.7	2.6	1.0	0.8	2.0	Jun
6.3	1.9	4.0	3.6	1.7	1.5	2.1	1.5	1.9	2.0	2.1	0.9	0.7	2.3	Jul
6.3	2.3	4.3	3.5	2.5	1.6	1.9	1.8	2.5	1.8	2.1	1.0	1.0	2.4	Aug
7.4	2.6	4.7	3.6	2.0	1.7	2.6	1.9	2.7	3.2	2.3	1.1	1.1	2.5	Sep
7.7	3.0	5.0	3.1	3.0	1.5	2.0	1.6	2.6	3.2	3.5	0.8	0.9	2.3	Oct
7.5	2.8	3.6	3.3	4.3	1.6\$	1.6\$	1.1	2.5	2.1	3.6	1.0	1.2	2.1	Nov
														Dec

\* estimated    \$ provisional    # revised    : not available

TABLE III  
HARMONIZED INDICES OF CONSUMER  
PRICES  
INDEX NUMBERS 1996 = 100

	EEA	IS	NO	CH**
<b>Annual Average Index</b>				
2002	110.9	123.5	113.9	104.5
2003	113.0	125.2	116.2	105.2
2004	115.3	128.1	116.9	106.0
<b>Monthly Index - 2003</b>				
Jan	111.8	124.3	117.6	104.9
Feb	112.3	124.0	117.9	105.1
Mar	112.9	125.4	117.2	105.5
Apr	113.0	125.3	116.4	105.7
May	112.9	125.2	115.8	105.5
Jun	113.0	125.3	115.5	105.5
Jul	112.9	125.0	115.1	104.7
Aug	113.1	124.5	115.3	104.9
Sep	113.5	125.4	115.8	105.1
Oct	113.6	125.8	115.8	105.6
Nov	113.7	126.0	115.8	105.5
Dec	114.0	126.3	115.8	105.5
<b>Monthly Index - 2004</b>				
Jan	113.7	126.2#	115.9	105.1
Feb	113.9	125.7	116.1	105.1
Mar	114.6	126.7#	116.7	105.4
Apr	115.1	127.2	116.9	106.3
May	115.5	128.1#	117.0	106.5
Jun	115.5	128.8#	117.0	106.7
Jul	115.3	128.4#	116.9	105.6
Aug	115.5	128.3	116.6	106.0
Sep	115.7	128.8#	117.1	106.0
Oct	116.1	129.5	117.4	107.0
Nov	116.1	129.6	117.4	107.1
Dec	116.5	130.0	117.2	106.9
<b>Monthly Index - 2005</b>				
Jan	115.9	129.5	117.0	106.4
Feb	116.3	129.3	117.1	106.6
Mar	117.0	129.8	117.7	106.9
Apr	117.5	129.2	118.3	107.8
May	117.8	128.8	118.7	107.7
Jun	117.9	129.3	118.9	107.4
Jul	117.8	129.1	118.5	106.8
Aug	118.1	128.8	118.7	107.0
Sep	118.6	130.9	119.6	107.5
Oct	118.9	131.5	119.6	108.4
Nov	118.7\$	131.0	119.6	108.1
Dec				

TABLE IV  
HARMONIZED INDICES OF CONSUMER  
PRICES  
RATES OF CHANGE (%)

	EEA	IS	NO	CH**	
<b>Annual Average Rate of Change</b>					
	2.1	5.3	0.8	0.6	2002/12
	2.0	1.4	2.0	0.6	2003/12
	2.0	2.3	0.6	0.8	2004/12
	2.2\$	1.5	1.4	1.2	2005/11
<b>Annual Rate of Change - 2003</b>					
	2.0	1.1	4.2	0.8	Jan
	2.3	1.1	4.1	0.9	Feb
	2.3	1.9	3.2	1.3	Mar
	2.0	1.9	2.5	0.7	Apr
	1.7	1.8	1.8	0.4	May
	1.8	1.3	1.5	0.5	Jun
	1.8	0.9	1.2	0.3	Jul
	1.9	1.0	1.8	0.5	Aug
	2.0	1.2	1.5	0.5	Sep
	1.9	1.1	1.3	0.5	Oct
	2.0	1.5	1.0	0.5	Nov
	1.8	1.8	0.1	0.6	Dec
<b>Annual Rate of Change - 2004</b>					
	1.7	1.5#	-1.4	0.2	Jan
	1.5	1.4	-1.5	0.1	Feb
	1.5	1.0	-0.4	-0.1	Mar
	1.8	1.5	0.4	0.5	Apr
	2.3	2.3#	1.0	0.9	May
	2.3	2.8#	1.3	1.1	Jun
	2.2	2.7#	1.6	0.9	Jul
	2.1	3.1	1.1	1.0	Aug
	2.0	2.7#	1.1	0.9	Sep
	2.2	2.9	1.4	1.3	Oct
	2.1	2.9	1.4	1.5	Nov
	2.2	2.9	1.2	1.3	Dec
<b>Annual Rate of Change - 2005</b>					
	2.0	2.6#	0.9	1.2	Jan
	2.1	2.9	0.9	1.4	Feb
	2.1	2.4#	0.9	1.4	Mar
	2.1	1.6	1.2	1.4	Apr
	2.0	0.5	1.5	1.1	May
	2.0	0.4#	1.6	0.7	Jun
	2.1	0.5	1.4	1.2	Jul
	2.2	0.4	1.8	1.0	Aug
	2.5	1.6	2.1	1.4	Sep
	2.4	1.5	1.9	1.3	Oct
	2.2\$	1.1	1.9	1.0	Nov
					Dec

\* estimated \$ provisional # revised : not available \*\* national CPI

TABLE V

## MAIN CATEGORIES OF HARMONIZED INDICES OF CONSUMER PRICES

November 2005 / November 2004

ANNUAL RATES OF CHANGE (%)

	00.	01.	02.	03.	04.	05.	06.	07.	08.	09.	10.	11.	12.
<b>Euro-zone</b>	2.3\$	1.1\$	5.7\$	0.3\$	5.0\$	0.8\$	1.5\$	4.2\$	-2.8\$	0.1\$	2.3\$	2.3\$	1.9\$
<b>EICP</b>	2.2\$	1.1\$	4.4\$	-0.8\$	5.2\$	0.6\$	2.0\$	4.2\$	-2.3\$	-0.3\$	3.1\$	2.6\$	2.4\$
<b>BE</b>	2.4	1.4	3.0	0.0	4.3	0.9	2.9	5.5	-1.1	0.3	1.6	3.0	2.3
<b>CZ</b>	2.2	0.3	0.2	-6.7	6.9	-1.9	7.3	4.7	6.1	2.7	2.6	1.7	1.1
<b>DK</b>	1.9	1.2	2.4	-0.9	3.8	1.1	2.0	3.4	-1.2	-0.6	1.1	2.1	2.2
<b>DE</b>	2.3	1.1	10.5	-1.5	4.6	0.0	1.0	3.5	-2.3	0.6	1.6	0.8	1.2
<b>EE</b>	4.0	3.4	3.8	3.9	7.6	1.3	2.4	7.9	-3.9	2.1	2.2	2.7	3.0
<b>EL</b>	3.4	2.9	3.3	3.5	8.1	1.6	4.0	3.0	2.4	1.5	3.7	3.1	3.1
<b>ES</b>	3.4	3.1	5.0	1.6	6.0	2.2	0.8	5.9	-1.5	0.1	4.2	4.3	3.0
<b>FR</b>	1.8	0.6	0.1	0.0	4.6	0.9	1.8	3.8	-2.4	-1.2	3.2	2.2	1.8
<b>IE</b>	2.2	-0.8	0.6	-1.6	10.6	-1.0	6.2	3.7	-0.5	-0.4	4.9	3.2	2.3
<b>IT</b>	2.4	0.4	7.3	1.5	5.8	1.5	1.4	4.3	-3.7	1.2	2.9	2.0	2.5
<b>CY</b>	2.0	4.6	-0.5	-1.7	10.8	-0.2	-2.3	3.4	-9.1	-1.4	4.5	1.5	2.6
<b>LV</b>	7.5	10.1	7.0	-1.2	10.4	4.0	9.8	12.4	-7.0	2.5	8.6	11.9	6.4
<b>LT</b>	2.8	3.8	-0.7	-1.5	6.9	-1.1	5.6	6.8	-3.8	1.7	-1.4	3.2	1.3
<b>LU</b>	3.6	2.4	5.3	0.5	6.1	1.4	1.1	6.0	-5.5	1.5	5.1	3.4	1.8
<b>HU</b>	3.3	2.2	0.0	0.2	6.7	-0.6	12.8	4.5	-0.4	1.7	7.0	5.1	3.5
<b>MT</b>	4.3	2.0	1.9	1.3	14.3	2.4	5.8	6.1	3.8	1.8	2.0	5.5	2.7
<b>NL</b>	1.6\$	0.7\$	1.3\$	-2.6\$	5.7\$	-0.3\$	0.9\$	4.2\$	-2.2\$	-0.7\$	-15.6\$	1.8\$	2.5\$
<b>AT</b>	1.6\$	1.3\$	6.3\$	0.0\$	4.2\$	0.6\$	5.1\$	3.8\$	-12.5\$	-2.2\$	0.7\$	1.9\$	2.1\$
<b>PL</b>	1.1	-0.7	2.7	-6.0	3.3	0.3	3.0	3.8	-0.3	-0.8	1.7	1.8	0.6
<b>PT</b>	2.5	0.8	5.1	-0.6	4.1	1.5	0.1	6.3	-1.1	1.2	6.9	1.7	2.0
<b>SI</b>	2.1	0.7	4.5	0.2	6.0	4.3	-1.4	-0.1	-0.8	2.6	5.7	4.1	2.6
<b>SK</b>	3.6	-0.9	0.7	-0.3	12.7	-2.1	5.2	1.7	-0.6	0.9	30.4	3.0	3.4
<b>FI</b>	1.0	0.4	1.5	-0.7	3.0	0.8	1.0	2.0	-11.5	-0.4	2.8	2.5	1.2
<b>SE</b>	1.2	-0.3	1.0	1.0	3.0	-1.6	1.5	4.5	-6.6	-1.6	2.9	2.6	2.9
<b>UK</b>	2.1	1.8	2.5	-5.1	6.5	0.0	2.9	4.1	-1.2	-1.6	4.7	3.5	4.4
<b>EEA</b>	2.2\$	1.1\$	4.4\$	-0.8\$	5.2\$	0.6\$	2.0\$	4.1\$	-2.3\$	-0.3\$	3.1\$	2.6\$	2.4\$
<b>IS</b>	1.1	-2.0	3.3	-1.6	4.4	-2.6	3.7	0.4	4.8	0.7	12.8	2.4	3.7
<b>NO</b>	1.9	1.6	2.0	-3.5	3.9	0.1	3.0	4.0	-0.2	1.0	2.2	1.6	2.0

\* estimated    \$ provisional    : not available

**COICOP/HICP Code**

- |            |   |            |                                  |
|------------|---|------------|----------------------------------|
| <b>00.</b> | HICP (all-items index)  | <b>06.</b> | Health                           |
| <b>01.</b> | Food and non-alcoholic beverages                                      | <b>07.</b> | Transports                       |
| <b>02.</b> | Alcoholic beverages and tobacco                                       | <b>08.</b> | Communications                   |
| <b>03.</b> | Clothing and footwear   | <b>09.</b> | Recreation and culture           |
| <b>04.</b> | Housing, water, electricity, gas and other fuels                      | <b>10.</b> | Education                        |
| <b>05.</b> | Furnishings, household equipment and routine maintenance of the house | <b>11.</b> | Restaurants and hotels           |
|            |   | <b>12.</b> | Miscellaneous goods and services |

# ***Further information:***

## **Databases**

[EUROSTAT Website/Economy and finance/Prices/Harmonized indices of consumer prices/Harmonized indices of consumer prices - Monthly data \(index\)](#)

---

### **Journalists can contact the media support service:**

Bech Building Office A4/017  
L - 2920 Luxembourg

Tel. (352) 4301 33408  
Fax (352) 4301 35349

E-mail: [eurostat-mediasupport@cec.eu.int](mailto:eurostat-mediasupport@cec.eu.int)

### **European Statistical Data Support:**

Eurostat set up with the members of the 'European statistical system' a network of support centres, which will exist in nearly all Member States as well as in some EFTA countries.

Their mission is to provide help and guidance to Internet users of European statistical data.

Contact details for this support network can be found on our Internet site: [www.europa.eu.int/comm/eurostat/](http://www.europa.eu.int/comm/eurostat/)

---

A list of worldwide sales outlets is available at the:

### **Office for Official Publications of the European Communities.**

2, rue Mercier  
L - 2985 Luxembourg

URL: <http://publications.eu.int>  
E-mail: [info-info-opoce@cec.eu.int](mailto:info-info-opoce@cec.eu.int)

---