

Harmonized Indices of Consumer Prices May 2005

Statistics in focus

ECONOMY AND FINANCE

19/2005

Prices

Author
Lene MEJER

Contents

Price Indices.....	2
Rates of Change.....	4
EEA Index Numbers and Rates of Change.....	6
COICOP/HICP Main categories.....	7

Euro-zone* annual inflation, as measured by the Monetary Union Index of Consumer Prices (MUICP), was 1.9% in May 2005, down from 2.1% in April. A year earlier the rate was 2.5%.

EU annual inflation, as measured by the European Index of Consumer Prices (EICP)**, was 1.9% in May 2005, down from 2.1% in April 2005. A year earlier the rate was 2.3%.

EEA annual inflation, as measured by the European Economic Area Index of Consumer Prices (EEAICP), was 1.9% in May 2005.

In May 2005, the highest annual rates in EU Member States were recorded in **Latvia** (6.5%), **Luxembourg** (3.7%), **Hungary** (3.5%) and **Greece** (3.2%); the lowest rates were observed in **Sweden** (0.2%), **Finland** (0.6%), the **Czech Republic** (0.9%) and the **Netherlands** (1.1%)

For the **USA***** and **Japan***** no May data was available in time for publication.

The inflation rates for the **euro-zone**, the **EU** and the latest available rates for the **USA***** and **Japan***** are shown in the graph below.

Methodological notes can be accessed via the Eurostat internet site under Publications/Methods and nomenclatures/Harmonized Indices of Consumer Prices – [Short guide for users](#) (issue date: 17/05/2004).

* The euro-zone comprises: Belgium, Germany, Greece, Spain, France, Ireland, Italy, Luxembourg, the Netherlands, Austria, Portugal and Finland.

** The EICP (EICP='European Index of Consumer Prices' as defined in Council Regulation (EC) No 2494/95 of 23 October 1995) is the official EU aggregate. It covers 15 Member States until April 2004 and 25 Member States starting from May 2004. The ten new Member States are integrated into the EICP starting from May 2004 using a chain index formula.

*** For the USA and Japan the national CPIs are given, which are not strictly comparable with the HICPs.

Annual Rate of Change (%)

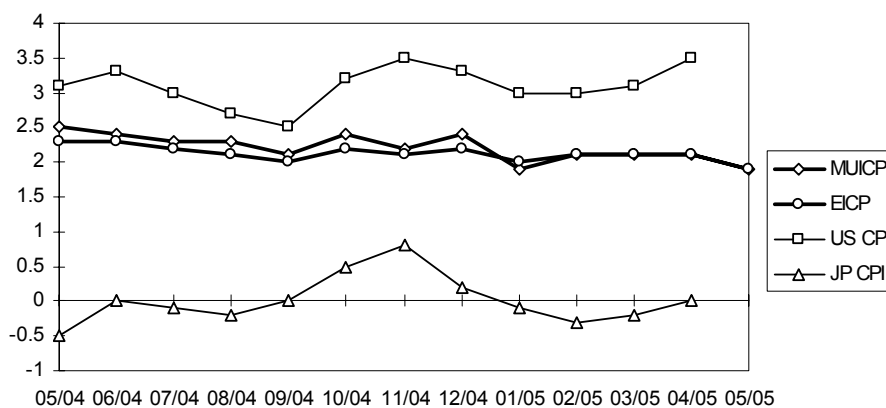


TABLE I
HARMONIZED INDICES OF CONSUMER PRICES
INDEX NUMBERS 1996 = 100

	Euro-zone	EICP	BE	CZ	DK	DE	EE	EL	ES	FR	IE	IT	CY
Annual Average Index													
2002	110.9	110.8	110.7	133.0	113.4	107.6	139.4	124.8	116.8	108.3	121.5	113.8	117.5
2003	113.2	113.0	112.3	132.9	115.6	108.8	141.4	129.0	120.5	110.7	126.3	117.0	122.2
2004	115.7	115.3	114.4	136.3	116.7	110.7	145.6	133.0	124.1	113.3	129.2	119.7	124.5
Monthly Index - 2003													
Jan	111.9	111.7	110.0	132.6	114.5	108.2	141.1	126.4	118.5	109.3	123.9	115.2	119.5
Feb	112.4	112.2	112.3	132.8	115.3	108.8	141.5	126.1	118.7	110.1	125.1	114.7	119.7
Mar	113.1	112.8	112.6	132.8	116.2	109.0	141.8	129.3	119.6	110.6	126.0	116.1	122.4
Apr	113.2	113.0	112.4	133.0	116.2	108.7	141.6	129.6	120.6	110.4	126.6	117.0	123.3
May	113.1	112.9	112.0	133.0	115.9	108.4	141.3	130.2	120.5	110.3	126.4	117.2	123.0
Jun	113.2	112.9	112.4	133.1	115.9	108.6	140.8	130.0	120.6	110.5	126.5	117.3	122.4
Jul	113.1	112.8	111.1	133.0	115.2	108.9	141.0	127.3	119.9	110.4	126.0	117.2	120.2
Aug	113.3	113.1	113.0	132.9	115.1	109.0	141.0	127.3	120.5	110.7	126.8	116.8	120.9
Sep	113.7	113.5	113.2	132.4	116.0	108.8	141.4	129.9	120.8	111.2	127.0	117.7	123.4
Oct	113.8	113.6	112.8	132.6	115.7	108.7	141.7	130.4	121.6	111.4	127.0	118.1	124.4
Nov	113.9	113.6	113.0	133.0	115.9	108.5	141.6	130.6	122.0	111.5	127.0	118.4	124.2
Dec	114.2	113.9	113.0	133.2	115.7	109.5	141.4	131.4	122.2	111.6	127.5	118.4	122.9
Monthly Index - 2004													
Jan	114.0	113.7	111.5	135.3	115.6	109.5	142.0	130.3	121.2	111.7	126.7	117.7	121.4
Feb	114.2	113.9	113.6	135.4	116.1	109.7	142.3	129.4	121.3	112.2	127.8	117.5	121.4
Mar	115.0	114.6	113.7	135.6	116.7	110.2	142.8	133.1	122.2	112.7	128.3	118.8	122.5
Apr	115.5	115.0	114.3	135.7	116.8	110.5	143.7	133.6	123.9	113.0	128.7	119.7	123.4
May	115.9	115.5	114.7	136.5	117.2	110.7	146.5	134.2	124.6	113.4	129.0	119.9	124.5
Jun	115.9	115.5	114.6	136.7	116.9	110.7	147.0	133.9	124.8	113.5	129.7	120.1	125.3
Jul	115.7	115.3	113.4	137.1	116.5	111.1	146.6	131.3	123.9	113.3	129.2	119.8	123.7
Aug	115.9	115.5	115.3	137.1	116.1	111.3	146.5	130.9	124.5	113.5	130.0	119.6	124.3
Sep	116.1	115.7	115.2	136.1	117.0	110.9	146.8	133.7	124.7	113.6	130.1	120.2	125.6
Oct	116.5	116.1	115.8	136.7	117.5	111.1	147.3	134.7	126.0	114.0	130.2	120.6	126.9
Nov	116.4	116.0	115.6	136.5	117.1	110.7	147.9	134.8	126.3	114.0	130.5	120.8	127.4
Dec	116.9	116.5	115.2	136.5	116.8	111.9	148.2	135.5	126.2	114.2	130.6	121.2	127.7
Monthly Index - 2005													
Jan	116.2	115.9	113.7	137.3	116.5	111.3	147.9	135.8	125.0	113.5	129.3	120.0	124.8
Feb	116.6	116.3	116.2	137.3	117.3	111.7	148.8	133.5	125.3	114.3	130.4	119.8	124.3
Mar	117.4	117.0	116.9	137.2	118.2	112.1	149.7	136.9	126.4	115.1	130.7	121.3	125.4
Apr	117.9	117.5	117.1	137.6	118.8	112.1	150.4	138.0	128.2	115.3	131.5	122.3	126.8
May	118.1\$	117.7\$	117.3	137.7	118.7	112.5	150.7	138.5	128.4	115.3	131.8	122.6	127.0
Jun													
Jul													
Aug													
Sep													
Oct													
Nov													
Dec													

* estimated \$ provisional # revised : not available

TABLE I
HARMONIZED INDICES OF CONSUMER PRICES
1996 = 100
INDEX NUMBERS

LV	LT	LU	HU	MT	NL	AT	PL	PT	SI	SK	FI	SE	UK	
Annual Average Index														
123.5	118.1	112.1	187.8	119.5	118.2	108.8	162.8	118.4	157.7	155.5	112.0	109.7	108.3	2002
127.1	116.9	115.0	196.6	121.8	120.8	110.2	164.0	122.3	166.7	168.6	113.5	112.3	109.8	2003
135.0	118.2	118.7	209.9	125.1	122.5	112.3	169.9	125.3	172.8	181.0	113.7	113.4	111.2	2004
Monthly Index - 2003														
125.4	117.6	113.2	192.3	117.6	119.2	109.7	163.3	120.7	162.7	165.3	112.5	111.0	108.6	Jan
125.8	117.4	114.5	193.8	118.1	120.1	109.9	163.5	120.7	163.6	166.2	113.5	112.1	109.0	Feb
126.5	117.7	115.1	195.5	119.0	121.2	110.2	164.0	120.8	164.7	167.3	113.9	112.8	109.4	Mar
126.9	117.8	114.9	195.5	122.2	121.3	110.1	164.3	121.8	165.7	167.4	113.8	112.4	109.7	Apr
127.2	117.6	114.7	195.7	123.0	121.2	109.9	164.3	122.7	166.6	167.4	113.7	112.3	109.7	May
128.0	117.7	114.7	196.4	123.2	120.6	109.9	164.1	122.7	167.4	167.9	113.6	112.1	109.6	Jun
127.6	116.8	113.8	196.9	123.9	120.5	109.8	163.3	122.5	168.5	167.8	113.0	111.9	109.5	Jul
126.2	116.0	115.2	196.3	124.1	120.8	110.1	162.6	122.6	168.1	169.6	113.2	111.8	109.9	Aug
126.8	115.6	116.0	197.4	123.8	121.8	110.4	163.4	122.9	167.9	170.7	113.8	112.7	110.2	Sep
127.9	115.7	115.5	198.9	124.5	121.6	110.4	164.4	123.2	168.1	171.1	113.7	112.8	110.4	Oct
128.6	116.2	116.0	200.2	120.4	121.1	110.6	165.0	123.3	168.4	171.3	113.6	112.5	110.3	Nov
128.7	116.2	116.2	200.5	121.6	120.4	110.9	165.3	123.4	168.4	171.5	113.7	112.7	110.7	Dec
Monthly Index - 2004														
130.4	116.2	115.8	205.1	120.9	121.0	111.0	166.2	123.4	169.2	178.9	113.4	112.4	110.1	Jan
131.2	116.0	117.3	207.4	121.0	121.7	111.5	166.4	123.2	169.5	180.1	113.9	112.3	110.4	Feb
132.5	116.6	117.4	208.5	121.5	122.7	111.9	167.0	123.5	170.5	180.5	113.4	113.3	110.6	Mar
133.3	117.0	118.0	209.1	126.6	123.1	111.8	168.1	124.7	171.6	180.5	113.4	113.6	111.0	Apr
135.0	118.8	118.6	211.0	126.8	123.3	112.2	170.0	125.7	173.1	181.1	113.6	114.0	111.4	May
135.8	118.9	119.1	211.1	127.2	122.4	112.4	171.2	127.2	173.9	181.5	113.5	113.4	111.3	Jun
136.1	118.9	118.1	211.1	127.8	122.0	112.1	171.0	126.1	174.8	181.7	113.2	113.2	111.0	Jul
136.0	118.5	119.4	210.4	127.2	122.2	112.5	170.5	125.6	174.3	181.4	113.5	113.1	111.3	Aug
136.6	119.1	119.6	210.6	127.8	123.2	112.4	171.0	125.5	173.6	181.7	114.0	114.0	111.4	Sep
137.1	119.3	120.2	211.6	127.8	123.4	113.0	172.0	126.1	173.8	181.9	114.4	114.4	111.7	Oct
137.8	119.6	120.6	211.7	122.7	122.9	113.2	172.5	126.5	174.8	181.6	113.8	113.7	111.9	Nov
138.2	119.5	120.3	211.6	123.9	121.9	113.7	172.5	126.6	174.0	181.4	113.8	113.7	112.5	Dec
Monthly Index - 2005														
139.1	119.5	119.1	213.2	123.2	122.5	113.7	172.5	125.9	173.1	184.4	113.2	113.0	111.9	Jan
140.4	119.7	121.1	214.4	124.0	123.5	114.1	172.5	125.8	174.3	184.7	113.9	113.6	112.2	Feb
141.2	120.4	121.5	215.4	124.6	124.5	114.6	172.6	126.3	176.1	184.6	114.4	113.9	112.7	Mar
142.7	120.8	122.4	217.0	129.1	124.7	114.4	173.3	127.2	176.2	185.0	114.7	114.1	113.1	Apr
143.8	121.1	123.0	218.3	129.9	124.6\$	114.4\$	173.8	127.9	176.8	185.2	114.3	114.2	113.5	May
														Jun
														Jul
														Aug
														Sep
														Oct
														Nov
														Dec

* estimated \$ provisional # revised : not available

TABLE II
HARMONIZED INDICES OF CONSUMER PRICES
 RATES OF CHANGE (%)

	Euro-zone	EICP	BE	CZ	DK	DE	EE	EL	ES	FR	IE	IT	CY
Annual Average Rate of Change													
2002/12	2.3	2.1	1.6	1.4	2.4	1.3	3.6	3.9	3.6	1.9	4.7	2.6	2.8
2003/12	2.1	2.0	1.5	-0.1	2.0	1.0	1.4	3.4	3.1	2.2	4.0	2.8	4.0
2004/12	2.1	2.0	1.9	2.6	0.9	1.8	3.0	3.0	3.1	2.3	2.3	2.3	1.9
2005/5	2.2\$	2.1\$	2.2	2.2	1.1	1.9	4.2	3.2	3.3	2.2	2.3	2.2	2.6
Annual Rate of Change - 2003													
Jan	2.1	2.0	1.2	-0.7	2.6	0.9	2.5	3.3	3.8	1.9	4.7	2.9	4.5
Feb	2.4	2.3	1.6	-0.6	2.9	1.2	2.2	4.2	3.8	2.5	5.1	2.6	4.8
Mar	2.4	2.3	1.7	-0.6	2.8	1.2	2.2	3.9	3.7	2.6	4.9	2.9	6.3
Apr	2.1	2.0	1.4	-0.4	2.5	1.0	1.1	3.3	3.2	1.9	4.6	3.0	5.6
May	1.8	1.7	0.9	-0.3	2.1	0.6	0.7	3.5	2.7	1.8	3.9	2.9	4.9
Jun	1.9	1.8	1.5	0.0	2.0	0.9	0.4	3.6	2.8	1.9	3.8	2.9	3.7
Jul	1.9	1.8	1.4	-0.3	1.8	0.8	0.9	3.5	2.9	1.9	3.9	2.9	2.6
Aug	2.1	2.0	1.6	-0.2	1.5	1.1	1.4	3.3	3.1	2.0	3.9	2.7	2.4
Sep	2.2	2.0	1.7	0.0	1.7	1.1	1.5	3.3	3.0	2.3	3.8	3.0	3.3
Oct	2.0	1.9	1.4	0.5	1.1	1.1	1.2	3.2	2.7	2.3	3.3	2.8	3.7
Nov	2.2	2.0	1.8	0.9	1.4	1.3	1.2	3.2	2.9	2.5	3.3	2.8	3.8
Dec	2.0	1.8	1.7	1.0	1.2	1.1	1.2	3.1	2.7	2.4	2.9	2.5	2.2
Annual Rate of Change - 2004													
Jan	1.9	1.8	1.4	2.0	1.0	1.2	0.6	3.1	2.3	2.2	2.3	2.2	1.6
Feb	1.6	1.5	1.2	2.0	0.7	0.8	0.6	2.6	2.2	1.9	2.2	2.4	1.4
Mar	1.7	1.5	1.0	2.1	0.4	1.1	0.7	2.9	2.2	1.9	1.8	2.3	0.1
Apr	2.0	1.8	1.7	2.0	0.5	1.7	1.5	3.1	2.7	2.4	1.7	2.3	0.1
May	2.5	2.3	2.4	2.6	1.1	2.1	3.7	3.1	3.4	2.8	2.1	2.3	1.2
Jun	2.4	2.3	2.0	2.7	0.9	1.9	4.4	3.0	3.5	2.7	2.5	2.4	2.4
Jul	2.3	2.2	2.1	3.1	1.1	2.0	4.0	3.1	3.3	2.6	2.5	2.2	2.9
Aug	2.3	2.1	2.0	3.2	0.9	2.1	3.9	2.8	3.3	2.5	2.5	2.4	2.8
Sep	2.1	2.0	1.8	2.8	0.9	1.9	3.8	2.9	3.2	2.2	2.4	2.1	1.8
Oct	2.4	2.2	2.7	3.1	1.6	2.2	4.0	3.3	3.6	2.3	2.5	2.1	2.0
Nov	2.2	2.1	2.3	2.6	1.0	2.0	4.4	3.2	3.5	2.2	2.8	2.0	2.6
Dec	2.4	2.2	1.9	2.5	1.0	2.2	4.8	3.1	3.3	2.3	2.4	2.4	3.9
Annual Rate of Change - 2005													
Jan	1.9	2.0	2.0	1.5	0.8	1.6	4.2	4.2	3.1	1.6	2.1	2.0	2.8
Feb	2.1	2.1	2.3	1.4	1.0	1.8	4.6	3.2	3.3	1.9	2.0	2.0	2.4
Mar	2.1	2.1	2.8	1.2	1.3	1.7	4.8	2.9	3.4	2.1	1.9	2.1	2.4
Apr	2.1	2.1	2.4	1.4	1.7	1.4	4.7	3.3	3.5	2.0	2.2	2.2	2.8
May	1.9\$	1.9\$	2.3	0.9	1.3	1.6	2.9	3.2	3.0	1.7	2.2	2.3	2.0
Jun													
Jul													
Aug													
Sep													
Oct													
Nov													
Dec													

* estimated \$ provisional # revised : not available

TABLE II
HARMONIZED INDICES OF CONSUMER PRICES
RATES OF CHANGE (%)

LV	LT	LU	HU	MT	NL	AT	PL	PT	SI	SK	FI	SE	UK	
Annual Average Rate of Change														
2.0	0.4	2.1	5.2	2.6	3.9	1.7	1.9	3.7	7.5	3.5	2.0	2.0	1.3	2002/12
2.9	-1.1	2.5	4.7	1.9	2.2	1.3	0.7	3.3	5.7	8.5	1.3	2.3	1.4	2003/12
6.2	1.1	3.2	6.8	2.7	1.4	2.0	3.6	2.5	3.6	7.4	0.1	1.0	1.3	2004/12
7.0	2.6	3.6	5.3	2.5	1.3\$	2.3\$	4.0	2.4	3.2	5.0	0.3	0.9	1.5	2005/5
Annual Rate of Change - 2003														
1.5	-1.8	3.3	4.8	0.8	2.7	1.7	0.4	4.0	6.7	7.1	1.4	2.6	1.4	Jan
2.1	-1.8	3.2	4.6	2.1	2.9	1.8	0.4	4.1	6.4	7.4	2.1	3.3	1.6	Feb
2.2	-1.0	3.7	4.8	2.4	2.8	1.8	0.4	3.8	6.3	8.1	1.9	2.9	1.6	Mar
2.4	-0.8	3.0	3.9	1.9	2.2	1.3	0.1	3.7	5.4	7.7	1.3	2.3	1.5	Apr
2.5	-0.8	2.3	3.5	1.9	2.3	0.9	0.3	3.7	5.6	7.7	1.1	2.0	1.2	May
3.7	-0.3	2.0	4.4	2.2	2.1	1.0	0.6	3.4	6.2	8.4	1.2	2.0	1.1	Jun
3.7	-0.8	1.9	4.7	1.7	2.1	1.0	0.7	2.9	6.1	8.5	1.0	2.4	1.3	Jul
3.4	-0.9	2.3	4.7	1.8	2.2	1.0	0.6	2.9	5.7	9.0	1.2	2.2	1.4	Aug
3.2	-0.8	2.7	4.6	1.7	2.0	1.4	0.7	3.2	5.1	9.3	1.2	2.3	1.4	Sep
3.3	-1.3	1.8	4.8	2.6	1.9	1.1	1.0	2.8	4.9	9.5	0.9	2.0	1.4	Oct
3.7	-0.9	2.0	5.6	1.8	2.0	1.3	1.5	2.3	5.3	9.5	1.2	2.0	1.3	Nov
3.5	-1.3	2.4	5.6	2.4	1.6	1.3	1.6	2.3	4.7	9.3	1.2	1.8	1.3	Dec
Annual Rate of Change - 2004														
4.0	-1.2	2.3	6.7	2.8	1.5	1.2	1.8	2.2	4.0	8.2	0.8	1.3	1.4	Jan
4.3	-1.2	2.4	7.0	2.5	1.3	1.5	1.8	2.1	3.6	8.4	0.4	0.2	1.3	Feb
4.7	-0.9	2.0	6.6	2.1	1.2	1.5	1.8	2.2	3.5	7.9	-0.4	0.4	1.1	Mar
5.0	-0.7	2.7	7.0	3.6	1.5	1.5	2.3	2.4	3.6	7.8	-0.4	1.1	1.2	Apr
6.1	1.0	3.4	7.8	3.1	1.7	2.1	3.5	2.4	3.9	8.2	-0.1	1.5	1.5	May
6.1	1.0	3.8	7.5	3.2	1.5	2.3	4.3	3.7	3.9	8.1	-0.1	1.2	1.6	Jun
6.7	1.8	3.8	7.2	3.1	1.2	2.1	4.7	2.9	3.7	8.3	0.2	1.2	1.4	Jul
7.8	2.2	3.6	7.2	2.5	1.2	2.2	4.9	2.4	3.7	7.0	0.3	1.2	1.3	Aug
7.7	3.0	3.1	6.7	3.2	1.1	1.8	4.7	2.1	3.4	6.4	0.2	1.2	1.1	Sep
7.2	3.1	4.1	6.4	2.7	1.5	2.4	4.6	2.4	3.4	6.3	0.6	1.4	1.2	Oct
7.2	2.9	4.0	5.7	1.9	1.5	2.4	4.5	2.6	3.8	6.0	0.2	1.1	1.5	Nov
7.4	2.8	3.5	5.5	1.9	1.2	2.5	4.4	2.6	3.3	5.8	0.1	0.9	1.6	Dec
Annual Rate of Change - 2005														
6.7	2.8	2.8	3.9	1.9	1.2	2.4	3.8	2.0	2.3	3.1	-0.2	0.5	1.6	Jan
7.0	3.2	3.2	3.4	2.5	1.5	2.3	3.7	2.1	2.8	2.6	0.0	1.2	1.6	Feb
6.6	3.3	3.5	3.3	2.6	1.5	2.4	3.4	2.3	3.3	2.3	0.9	0.5	1.9	Mar
7.1	3.2	3.7	3.8	2.0	1.3	2.3	3.1	2.0	2.7	2.5	1.1	0.4	1.9	Apr
6.5	1.9	3.7	3.5	2.4	1.1\$	2.0\$	2.2	1.8	2.1	2.3	0.6	0.2	1.9	May
														Jun
														Jul
														Aug
														Sep
														Oct
														Nov
														Dec

* estimated \$ provisional # revised : not available

TABLE III
HARMONIZED INDICES OF CONSUMER
PRICES
INDEX NUMBERS 1996 = 100

	EEA	IS	NO	CH**
Annual Average Index				
2002	110.9	123.5	113.9	104.5
2003	113.0	125.2	116.2	105.2
2004	115.3	128.1	116.9	106.0
Monthly Index - 2003				
Jan	111.8	124.3	117.6	104.9
Feb	112.3	124.0	117.9	105.1
Mar	112.9	125.4	117.2	105.5
Apr	113.0	125.3	116.4	105.7
May	112.9	125.2	115.8	105.5
Jun	113.0	125.3	115.5	105.5
Jul	112.9	125.0	115.1	104.7
Aug	113.1	124.5	115.3	104.9
Sep	113.5	125.4	115.8	105.1
Oct	113.6	125.8	115.8	105.6
Nov	113.7	126.0	115.8	105.5
Dec	114.0	126.3	115.8	105.5
Monthly Index - 2004				
Jan	113.7	126.1	115.9	105.1
Feb	113.9	125.7	116.1	105.1
Mar	114.6	126.6	116.7	105.4
Apr	115.1	127.2	116.9	106.3
May	115.5	128.2	117.0	106.5
Jun	115.5	128.9	117.0	106.7
Jul	115.3	128.5	116.9	105.6
Aug	115.5	128.3	116.6	106.0
Sep	115.7	128.9	117.1	106.0
Oct	116.1	129.5	117.4	107.0
Nov	116.1	129.6	117.4	107.1
Dec	116.5	130.0	117.2	106.9
Monthly Index - 2005				
Jan	115.9	129.5	117.0	106.4
Feb	116.3	129.3	117.1	106.6
Mar	117.0	129.8	117.7	106.9
Apr	117.5	129.2	118.3	107.8
May	117.7\$	128.8	118.7	107.7
Jun				
Jul				
Aug				
Sep				
Oct				
Nov				
Dec				

TABLE IV
HARMONIZED INDICES OF CONSUMER
PRICES
RATES OF CHANGE (%)

	EEA	IS	NO	CH**	
Annual Average Rate of Change					
	2.1	5.3	0.8	0.6	2002/12
	2.0	1.4	2.0	0.6	2003/12
	2.0	2.3	0.6	0.8	2004/12
	2.1\$	2.5	1.2	1.2	2005/5
Annual Rate of Change - 2003					
	2.0	1.1	4.2	0.8	Jan
	2.3	1.1	4.1	0.9	Feb
	2.3	1.9	3.2	1.3	Mar
	2.0	1.9	2.5	0.7	Apr
	1.7	1.8	1.8	0.4	May
	1.8	1.3	1.5	0.5	Jun
	1.8	0.9	1.2	0.3	Jul
	1.9	1.0	1.8	0.5	Aug
	2.0	1.2	1.5	0.5	Sep
	1.9	1.1	1.3	0.5	Oct
	2.0	1.5	1.0	0.5	Nov
	1.8	1.8	0.1	0.6	Dec
Annual Rate of Change - 2004					
	1.7	1.4	-1.4	0.2	Jan
	1.5	1.4	-1.5	0.1	Feb
	1.5	1.0	-0.4	-0.1	Mar
	1.8	1.5	0.4	0.5	Apr
	2.3	2.4	1.0	0.9	May
	2.3	2.9	1.3	1.1	Jun
	2.2	2.8	1.6	0.9	Jul
	2.1	3.1	1.1	1.0	Aug
	2.0	2.8	1.1	0.9	Sep
	2.2	2.9	1.4	1.3	Oct
	2.1	2.9	1.4	1.5	Nov
	2.2	2.9	1.2	1.3	Dec
Annual Rate of Change - 2005					
	2.0	2.7	0.9	1.2	Jan
	2.1	2.9	0.9	1.4	Feb
	2.1	2.5	0.9	1.4	Mar
	2.1	1.6	1.2	1.4	Apr
	1.9\$	0.5	1.5	1.1	May
					Jun
					Jul
					Aug
					Sep
					Oct
					Nov
					Dec

* estimated \$ provisional # revised : not available ** national CPI

TABLE V

MAIN CATEGORIES OF HARMONIZED INDICES OF CONSUMER PRICES

May 2005 / May 2004

ANNUAL RATES OF CHANGE (%)

	00.	01.	02.	03.	04.	05.	06.	07.	08.	09.	10.	11.	12.
Euro-zone	1.9\$	0.6\$	3.9\$	0.3\$	4.3\$	0.9\$	2.2\$	3.0\$	-2.2\$	0.5\$	3.4\$	2.6\$	1.8\$
EU-15	1.9\$	0.9\$	3.2\$	-0.8\$	4.5\$	0.6\$	2.4\$	3.0\$	-2.3\$	0.2\$	4.0\$	2.9\$	2.3\$
BE	2.3	2.4	1.9	0.5	4.7	0.8	2.0	4.6	-0.2	-0.8	2.3	2.4	2.1
CZ	0.9	0.3	1.0	-4.9	4.1	-2.2	5.9	-0.6	-2.8	1.2	3.4	3.3	1.7
DK	1.3	-0.2	1.5	-0.5	3.5	0.5	2.9	2.1	-0.6	-2.2	3.4	2.7	2.6
DE	1.6	0.6	6.7	-1.7	3.3	0.1	1.6	1.5	-0.8	1.2	2.8	1.5	0.9
EE	2.9	2.2	3.8	1.3	7.2	0.3	2.9	4.2	-4.4	0.5	4.3	3.2	2.6
EL	3.2	-0.1	1.9	3.6	9.8	1.8	4.9	4.4	-1.5	1.4	4.3	3.6	3.4
ES	3.0	3.1	4.4	1.3	5.1	2.1	1.0	4.7	-2.0	-0.3	4.2	4.2	2.8
FR	1.7	0.0	0.0	0.3	4.2	1.0	2.2	3.1	0.1	-0.3	2.3	2.5	1.3
IE	2.2	-1.0	0.1	-2.6	9.5	-1.7	6.3	3.5	-0.2	1.2	6.6	3.4	1.6
IT	2.3	-0.3	5.3	1.8	4.7	1.7	3.0	4.6	-4.7	1.0	3.3	2.7	3.2
CY	2.0	0.6	0.0	3.4	8.5	0.2	-0.2	3.6	-11.0	1.8	5.6	2.4	2.5
LV	6.5	10.6	2.5	-0.5	4.7	2.5	11.2	10.7	-4.0	2.4	8.2	10.6	5.2
LT	1.9	4.6	-0.4	-2.9	3.9	-2.4	7.2	3.6	-2.6	-1.2	-0.2	2.1	-2.0
LU	3.7	1.6	7.7	0.5	6.8	1.5	-1.4	5.9	-5.1	1.2	0.2	3.1	1.8
HU	3.5	1.8	2.3	-0.1	7.0	0.1	10.4	4.6	0.5	2.2	8.7	5.8	2.4
MT	2.4	3.7	1.8	-0.2	9.3	2.1	6.2	3.0	19.9	1.2	2.0	-1.9	2.8
NL	1.1\$	-1.6\$	1.2\$	-2.2\$	6.1\$	-0.3\$	1.0\$	2.2\$	-6.0\$	-0.6\$	2.4\$	1.3\$	2.1\$
AT	2.0\$	0.4\$	5.8\$	-1.8\$	6.5\$	-0.2\$	4.9\$	2.1\$	-6.7\$	0.1\$	2.4\$	2.6\$	2.7\$
PL	2.2	4.1	2.5	-5.0	3.0	1.3	2.6	3.0	0.1	-0.1	3.5	4.5	1.1
PT	1.8	-1.0	4.6	-2.1	4.2	1.0	1.0	4.2	1.5	1.7	6.8	2.0	1.8
SI	2.1	-1.9	3.8	-0.3	8.8	4.2	1.1	1.5	0.2	1.0	6.6	4.3	2.1
SK	2.3	0.1	-1.7	-0.8	6.3	-3.9	6.8	-0.4	-0.5	1.6	31.7	6.0	2.8
FI	0.6	0.9	-0.3	-0.2	3.2	0.2	2.0	1.0	-10.7	-1.4	4.5	1.8	1.2
SE	0.2	-0.4	0.1	-2.3	1.9	-1.5	1.6	1.7	-3.5	-2.4	3.2	2.9	1.4
UK	1.9	1.4	2.2	-5.5	6.4	-1.0	2.8	3.4	-3.5	-0.6	5.0	3.4	4.4
EEA	1.9\$	0.9\$	3.2\$	-0.9\$	4.4\$	0.5\$	2.4\$	3.0\$	-2.2\$	0.2\$	4.0\$	2.9\$	2.3\$
IS	0.5	-6.9	4.0	-0.3	5.8	-0.1	4.6	1.9	3.2	-0.4	1.6	1.8	1.9
NO	1.5	1.6	2.3	-6.4	2.0	-0.5	2.7	4.5	0.1	0.8	0.8	1.9	2.0

* estimated \$ provisional # revised : not available

COICOP/HICP Code

- | | |
|--|---|
| 00. HICP (all-items index) | 06. Health |
| 01. Food and non-alcoholic beverages | 07. Transports |
| 02. Alcoholic beverages and tobacco | 08. Communications |
| 03. Clothing and footwear | 09. Recreation and culture |
| 04. Housing, water, electricity, gas and other fuels | 10. Education |
| 05. Furnishings, household equipment and routine maintenance of the house | 11. Restaurants and hotels |
| | 12. Miscellaneous goods and services |

Further information:

Databases

[EUROSTAT Website/Economy and finance/Prices/Harmonized indices of consumer prices \(HICP\)](#)

Journalists can contact the media support service:

Bech Building Office A4/017
L - 2920 Luxembourg

Tel. (352) 4301 33408
Fax (352) 4301 35349

E-mail: eurostat-mediasupport@cec.eu.int

European Statistical Data Support:

Eurostat set up with the members of the 'European statistical system' a network of support centres, which will exist in nearly all Member States as well as in some EFTA countries.

Their mission is to provide help and guidance to Internet users of European statistical data.

Contact details for this support network can be found on our Internet site: www.europa.eu.int/comm/eurostat/

A list of worldwide sales outlets is available at the:
Office for Official Publications of the European Communities.

2, rue Mercier
L - 2985 Luxembourg

URL: <http://publications.eu.int>
E-mail: info-info-opoce@cec.eu.int
