

Developments for labour input indicators

during the first quarter of 2004

Statistics in focus

INDUSTRY, TRADE AND SERVICES

33/2004

Author
Romy Becker-Schneider

Contents

Employment index for industry (excluding construction)	2
Employment index for services	3
Hours worked index for total industry (excluding construction)	6
Wages and salaries index for total industry (excluding construction)	8
Labour input indices for industrial Divisions of NACE	10

Data for the first quarter of 2004 shows that the number of persons employed and the number of hours worked in the EU-25's industrial economy contracted compared to the previous quarter. This decrease was also observed for the EU-15 and the euro-zone. These latest figures marked the fourth consecutive quarter on quarter reduction in the number of persons employed in the EU-25, the EU-15 and the euro-zone.

Wages and salaries in the industrial economy grew between the last quarter of 2003 and the first quarter of 2004 by 0.7 % in the EU-25 and by 0.6 % in both the EU-15 and the euro-zone. Those growth rates followed more moderate quarter on quarter growths of 0.2 % to 0.3 % registered during the previous quarter. On the basis of a comparison with a year before, wages and salaries grew by 2.0 % in the EU-25 during the first quarter of 2004, after having registered a 1.1 % increase for the previous quarter.

	Quarter on quarter growth rates, seasonally adjusted data			Year on year growth rates, gross data		
	EU-25	EU-15	Euro-zone	EU-25	EU-15	Euro-zone
Employment	-0.5	-0.5	-0.3	-2.0	-2.2	-2.1
Hours worked	-0.8	-0.7	-0.5	-1.2	-1.3	-1.1
Wages & Salaries	0.7	0.6	0.6	2.0	1.7	1.7

Table 1: Recent growth rates for total industry (excluding construction) (%), Q1/2004

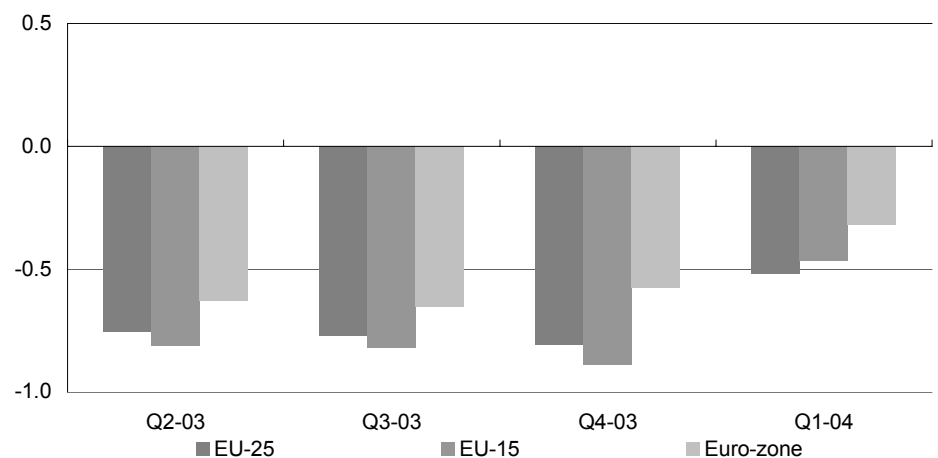


Figure 1: Employment index for total industry (excluding construction), growth rates, quarter compared to previous quarter, seasonally adjusted (%)

Data extracted on: 14.07.2004



Employment index for industry (excluding construction)

In the first quarter of 2004, on the basis of a comparison with the quarter before, industrial employment fell by 0.5 % in both the EU-25 and the EU-15. The corresponding rate of change in the euro-zone was -0.3 %.

		Quarter on quarter growth rates, seasonally adjusted data						Year on year growth rates, gross data					
		Q4-02	Q1-03	Q2-03	Q3-03	Q4-03	Q1-04	Q4-02	Q1-03	Q2-03	Q3-03	Q4-03	Q1-04
Total industry (excluding construction)	EU-25	-0.5	0.0	-0.8	-0.8	-0.8	-0.5	-2.5	-1.7	-1.8	-1.9	-1.8	-2.0
	EU-15	-0.5	0.0	-0.8	-0.8	-0.9	-0.5	-2.5	-1.6	-1.7	-1.9	-1.9	-2.2
	Euro-zone	-0.3	0.0	-0.6	-0.7	-0.6	-0.3	-2.0	-1.0	-1.3	-1.6	-1.9	-2.1
Energy	EU-25	-0.7	-0.3	-0.5	-0.3	-0.5	-0.7	-2.8	-2.1	-2.1	-1.8	-1.6	-2.0
	EU-15	-0.7	-0.1	-0.4	0.0	-0.4	-0.3	-2.3	-1.4	-1.6	-1.2	-0.9	-1.1
	Euro-zone	-0.3	0.1	-0.5	-0.1	-0.2	-0.2	-2.1	-0.9	-1.1	-0.8	-0.6	-0.9
Intermediate goods	EU-25	-0.4	-0.3	-0.7	-0.8	-0.4	-0.2	-2.3	-1.7	-2.0	-2.3	-2.3	-2.1
	EU-15	-0.4	-0.2	-0.8	-0.8	-0.5	-0.5	-2.3	-1.4	-1.8	-2.3	-2.4	-2.5
	Euro-zone	-0.1	-0.2	-0.8	-0.9	-0.5	-0.2	-1.7	-1.0	-1.5	-2.0	-2.4	-2.3
Capital goods	EU-25	-0.4	0.1	-0.1	-0.8	-0.2	-0.4	-2.2	-1.4	-0.9	-1.3	-1.0	-1.5
	EU-15	-0.4	-0.1	-0.3	-0.8	-0.4	-0.5	-2.2	-1.4	-1.0	-1.6	-1.5	-1.9
	Euro-zone	-0.1	0.2	-0.4	-0.9	-0.3	-0.2	-1.6	-0.7	-0.6	-1.2	-1.4	-1.8
Consumer durables	EU-25	-0.8	0.7	-1.1	-0.6	-0.2	-0.2	-4.0	-2.0	-2.2	-1.8	-1.2	-2.1
	EU-15	-1.1	-0.1	-1.3	-0.9	-0.6	-0.9	-4.3	-3.0	-3.3	-3.3	-2.8	-3.5
	Euro-zone	-0.9	0.2	-1.1	-0.9	-0.7	-0.6	-3.9	-2.5	-2.6	-2.6	-2.5	-3.3
Consumer non-durables	EU-25	-0.5	-0.3	-0.6	-0.6	-0.7	-0.8	-2.5	-1.7	-1.9	-2.0	-2.2	-2.6
	EU-15	-0.5	-0.2	-0.6	-0.5	-0.6	-0.7	-2.1	-1.4	-1.7	-1.8	-2.0	-2.5
	Euro-zone	-0.2	-0.3	-0.6	-0.5	-0.7	-0.6	-1.4	-0.8	-1.4	-1.7	-2.3	-2.6

Table 2: Employment index for the MIGs, growth rates (%)

	Quarter on quarter growth rates, seasonally adj. data						Year on year growth rates, gross data					
	Q4-02	Q1-03	Q2-03	Q3-03	Q4-03	Q1-04	Q4-02	Q1-03	Q2-03	Q3-03	Q4-03	Q1-04
EU-25	-0.5	0.0	-0.8	-0.8	-0.8	-0.5	-2.5	-1.7	-1.8	-1.9	-1.8	-2.0
EU-15	-0.5	0.0	-0.8	-0.8	-0.9	-0.5	-2.5	-1.6	-1.7	-1.9	-1.9	-2.2
Euro-zone	-0.3	0.0	-0.6	-0.7	-0.6	-0.3	-2.0	-1.0	-1.3	-1.6	-1.9	-2.1
BE	-0.9	-1.1	-1.1	-1.2	-1.1	-0.9	-3.2	-3.8	-3.7	-4.2	-4.5	-4.4
CZ	-0.7	1.3	-0.6	-0.8	0.0	-0.8	-2.7	-2.3	-2.5	-2.6	-0.2	-0.2
DK	-7.1	1.8	-0.5	0.7	0.0	:	-9.6	-7.6	-3.9	-6.1	4.4	:
DE	-0.5	0.0	-0.3	-0.4	-0.5	-0.8	-3.1	-1.2	-1.0	-1.0	-1.0	-2.2
EE	0.3	-1.9	-0.9	0.4	0.2	3.4	2.1	1.2	0.0	0.1	0.4	1.3
EL	:	:	:	:	:	:	:	:	:	:	:	:
ES	-0.1	0.1	-1.4	-0.4	-1.1	0.4	0.6	1.9	-0.9	-1.8	-3.0	-2.2
FR	-0.4	-0.5	-0.7	-0.6	-0.7	-0.4	-2.2	-2.0	-2.0	-2.2	-2.4	-2.4
IE	:	:	:	:	:	:	:	:	:	:	:	:
IT	0.6	0.4	-0.5	-0.8	-0.1	0.2	-0.3	0.6	0.2	-0.4	-1.1	-1.2
CY	:	:	:	:	:	:	:	:	:	:	:	:
LV	0.2	0.3	0.4	0.2	0.1	0.3	-0.7	1.7	3.1	3.2	3.3	0.2
LT	:	:	:	:	:	:	:	:	:	:	:	:
LU	-0.3	-0.1	-0.5	-0.2	-0.5	:	-1.7	-1.7	-1.6	-1.3	-1.2	:
HU	-0.8	-0.7	-0.5	-0.9	-0.8	-1.1	-1.6	-3.0	-1.9	-1.4	-1.4	-2.5
MT	:	:	:	:	:	:	:	:	:	:	:	:
NL	-0.6	-1.0	-0.7	-0.7	-0.8	-0.5	-2.2	-2.8	-2.7	-2.8	-3.1	-3.5
AT	-0.3	0.0	-0.1	0.0	0.0	0.1	-2.3	-1.6	-1.2	-0.4	-0.1	0.0
PL	-0.7	0.2	-0.7	-0.4	-0.8	-0.7	-3.8	-2.8	-2.5	-1.9	-2.1	-0.8
PT	-1.0	-1.3	-1.4	-1.2	-0.9	-0.2	-4.6	-4.8	-4.7	-4.8	-4.7	-3.2
SI	-0.3	-0.2	-0.6	-0.4	-0.4	-0.4	1.3	-0.9	-2.1	-2.2	-2.1	-2.0
SK	1.1	-3.7	2.1	1.4	0.2	:	0.8	1.4	-0.3	0.8	-0.2	:
FI	-2.6	-0.1	-1.4	-1.2	-1.2	0.5	-4.6	-5.2	-4.0	-5.0	-3.5	-3.8
SE	:	:	:	:	:	:	:	:	:	:	:	:
UK	-1.2	-0.7	-0.8	-0.8	-0.6	-0.9	-5.0	-4.4	-4.0	-3.4	-2.8	-3.0
BG	0.6	1.0	0.2	0.9	0.6	2.0	-1.7	3.8	3.7	1.5	1.6	0.5
RO	-0.9	4.1	-2.4	-0.9	-0.6	-2.5	-1.8	-1.3	-1.2	-1.4	-1.3	-5.6
TR	:	:	:	:	:	:	:	:	:	:	:	:

Table 3: Employment index for total industry (excluding construction), growth rates (%)

Employment index for services

	Quarter on quarter growth rates, seasonally adj. data						Year on year growth rates, gross data					
	Q4-02	Q1-03	Q2-03	Q3-03	Q4-03	Q1-04	Q4-02	Q1-03	Q2-03	Q3-03	Q4-03	Q1-04
EU-25	0.2	0.1	0.1	0.2	0.1	0.2	1.1	0.4	0.6	1.1	0.6	0.9
EU-15	0.4	0.1	0.2	0.1	0.2	.	0.7	0.8	0.9	1.4	0.8	0.9
Euro-zone	0.3	0.4	0.0	0.4	0.1	0.5	0.7	0.9	0.7	1.2	0.8	0.8
BE
CZ	-2.0	-6.8	-0.1	4.9	-3.1	-3.1	-0.2	-2.0	-1.6	1.7	0.0	-6.2
DK	2.2	-1.2	2.7	-0.8	-2.3	.	5.0	0.3	4.5	2.9	-1.5	.
DE	-0.7	-0.5	-0.7	-0.5	-0.4	-0.2	-2.9	-2.6	-2.5	-2.1	-1.6	-1.3
EE	5.4	-0.5	-0.6	-1.1	-2.4	-1.9
EL
ES
FR	0.3	0.3	0.4	0.2	0.3	0.2	1.1	1.1	1.5	1.2	1.2	1.1
IE	1.1	0.1	-0.1	-0.9	1.6	1.0	2.5	1.6	1.8	1.0	1.6	3.8
IT	1.9	2.0	0.5	2.8	0.1	1.7	6.1	6.6	5.6	7.6	5.5	4.9
CY
LV	1.1	3.5	3.1	3.1	3.7	4.8
LT	15.4	8.5	6.6	9.9	9.5	9.7
LU	0.2	0.7	0.1	0.4	0.7	-0.3	1.1	1.1	0.9	1.3	1.8	1.5
HU	0.6	-0.1	0.8	0.4	0.3	0.2	1.9	1.9	2.4	2.7	3.1	7.2
MT
NL	-0.1	0.0	-0.5	-0.4	-0.3	-0.5	-0.4	0.2	-0.5	-1.0	-1.2	-1.7
AT	0.1	-0.5	0.1	-0.5	-0.1	0.1	-0.1	-0.9	-1.0	-0.7	-1.0	-0.5
PL	0.2	-2.0	0.1	0.0	0.0	1.9	4.4	-1.3	-1.1	-1.1	-1.3	0.5
PT	-0.5	-0.9	-0.9	-1.1	-0.6	-0.3	-0.7	-1.2	-2.3	-3.4	-3.5	-2.8
SI	0.4	0.3	0.0	-0.6	-0.5	-7.0
SK	-7.9	-17.5	-17.6	-16.0	-13.6	-1.5
FI	0.3	1.5	-1.3	3.7	-0.3	1.6	0.8	1.6	1.2	4.2	0.7	0.9
SE	-2.7	-2.1	3.5	4.0	2.8	1.7
UK	0.6	-0.6	0.1	-0.2	0.4	-0.3	1.1	-0.5	-0.3	-0.6	-0.3	0.6
BG	2.8	4.1	2.6	1.1	2.5	4.5	7.8	14.7	17.7	16.7	9.7	12.6
RO	-0.6	1.9	-1.5	-0.7	-0.8	-0.6	-8.2	6.6	4.7	2.4	-0.3	0.4
TR

Table 4: Employment index for distribution (NACE Section G), growth rates (%)

	Quarter on quarter growth rates, seasonally adj. data						Year on year growth rates, gross data					
	Q4-02	Q1-03	Q2-03	Q3-03	Q4-03	Q1-04	Q4-02	Q1-03	Q2-03	Q3-03	Q4-03	Q1-04
EU-25	0.5	0.1	0.6	0.4	0.5	.	2.1	1.3	1.6	1.6	1.6	.
EU-15	0.5	0.3	0.6	0.3	0.5	.	1.8	1.5	1.9	1.8	1.8	.
Euro-zone	0.6	0.7	0.7	0.4	0.2	0.7	1.4	1.8	2.2	2.5	2.0	2.0
BE
CZ	c	c	c	c	c	c	c	c	c	c	c	c
DK	1.9	-0.6	3.3	-1.8	-2.4	.	4.9	0.3	4.4	2.8	-1.5	.
DE	-0.8	-0.3	-0.4	-0.4	0.0	-0.4	-2.4	-2.6	-2.3	-1.8	-1.0	-1.1
EE	2.8	-2.2	0.5	1.0	-1.0	-9.6	4.9	-3.4	-5.8	-5.5	-8.8	-4.8
EL
ES	1.1	0.6	0.8	1.3	0.5	.	3.0	3.2	3.5	3.8	2.9	.
FR	0.5	0.5	0.7	0.5	0.6	0.6	1.4	1.7	2.7	2.1	2.3	2.3
IE	c	c	c	c	c	c	c	c	c	c	c	c
IT	c	c	c	c	c	c	c	c	c	c	c	c
CY
LV	-0.1	0.4	-0.1	-0.4	-0.6	-0.2	3.6	1.8	1.7	2.3	3.3	2.3
LT	1.9	-0.8	1.9	2.4	1.9	2.0	9.1	2.2	2.3	6.8	7.6	10.1
LU	0.5	0.2	0.3	0.4	0.6	-0.4	-0.3	0.1	0.9	1.3	1.4	1.0
HU	0.4	0.8	1.1	0.7	0.7	1.4	3.9	3.0	2.7	2.3	3.9	9.6
MT
NL	0.6	0.2	-0.4	-0.2	-0.4	-0.6	-0.3	1.1	0.2	-0.2	-0.7	-1.8
AT	0.3	0.6	0.1	0.0	0.2	.	0.3	1.4	1.0	1.1	1.0	0.2
PL	0.2	-2.1	0.5	0.1	0.2	3.2	6.1	0.0	0.6	0.5	0.3	0.7
PT	0.4	-0.1	-0.2	0.4	-0.2	-0.2	1.3	1.1	0.8	0.6	-0.1	-0.3
SI	-0.1	-0.2	0.0	-0.2	0.0	0.1	2.1	-0.3	-1.5	-1.8	-1.7	-0.3
SK	-1.2	-1.9	-2.4	-0.3	-1.8	4.7	-2.3	-6.8	-10.3	-8.7	-7.3	-0.6
FI	-0.4	-0.2	0.5	1.0	-2.0	1.2	-2.8	-1.2	-0.5	1.5	-1.4	0.5
SE	-3.0	-2.3	6.8	7.5	2.0	2.0
UK	1.1	-0.8	0.3	-0.2	0.8	-0.6	1.5	-0.1	0.1	-0.2	0.4	1.1
BG	2.4	3.0	2.6	1.2	2.3	2.8	6.7	14.8	19.9	18.6	14.6	17.6
RO	-3.0	1.7	-3.8	-2.9	-2.6	-5.9	-19.9	6.9	2.2	-1.5	-5.3	-6.6
TR

Table 5: Employment index for retail trade (NACE Division 52), growth rates (%)

Employment index for services (continued)

	Quarter on quarter growth rates, seasonally adj. data						Year on year growth rates, gross data					
	Q4-02	Q1-03	Q2-03	Q3-03	Q4-03	Q1-04	Q4-02	Q1-03	Q2-03	Q3-03	Q4-03	Q1-04
EU-25	-0.7	0.0	0.3	0.4	-0.3	:	0.0	0.2	0.2	-0.3	0.7	:
EU-15	-0.7	0.8	0.6	0.6	-0.4	:	-0.1	0.2	0.3	-0.4	0.7	:
Euro-zone	-0.7	0.3	0.6	-0.1	0.3	-0.3	-2.8	-0.9	-0.4	-0.8	0.8	0.6
BE	:	:	:	:	:	:	:	:	:	:	:	:
CZ	c	c	c	c	c	c	c	c	c	c	c	c
DK	2.5	-2.1	2.9	-0.4	-1.6	:	4.7	0.3	4.3	2.8	-1.5	:
DE	-1.6	-1.1	0.1	0.0	0.0	0.5	-5.3	-5.3	-4.0	-2.6	-1.1	0.7
EE	1.6	0.7	1.0	4.3	1.3	4.2	16.4	6.7	3.8	5.1	3.6	10.4
EL	:	:	:	:	:	:	:	:	:	:	:	:
ES	:	:	:	:	:	:	:	1.2	2.0	0.9	2.6	0.6
FR	0.5	0.5	0.7	0.7	0.8	0.8	2.5	2.2	2.6	2.4	2.7	3.0
IE	c	c	c	c	c	c	c	c	c	c	c	c
IT	1.1	0.0	1.5	1.0	-0.2	-0.1	6.9	3.2	3.5	3.7	2.3	3.1
CY	:	:	:	:	:	:	:	:	:	:	:	:
LV	1.1	4.0	-0.8	0.3	1.4	1.9	-6.0	19.6	16.7	16.2	18.9	4.3
LT	:	:	:	:	:	:	18.1	8.2	5.8	17.9	16.0	:
LU	3.0	0.3	-0.1	1.0	2.1	0.4	6.7	3.2	3.7	4.2	3.4	3.4
HU	:	:	:	:	:	:	:	:	:	:	:	:
MT	:	:	:	:	:	:	:	:	:	:	:	:
NL	-0.3	-0.8	-0.8	-0.7	-0.8	-0.5	-0.5	-1.6	-2.2	-3.0	-3.3	-2.5
AT	-0.6	-0.8	-1.0	-1.1	-0.9	-1.1	0.5	-0.2	0.2	-10.8	0.3	0.0
PL	-0.2	-1.5	-0.5	-0.3	-0.5	-0.5	1.8	-3.5	-4.1	-3.3	-3.1	-1.0
PT	-0.4	-0.7	-1.4	-0.3	-0.2	-0.8	-1.1	-1.2	-3.6	-2.8	-2.6	-2.7
SI	-0.4	-0.1	-0.3	-0.2	-0.3	-0.3	-0.7	-0.5	0.3	0.6	0.4	-0.3
SK	-1.8	1.0	-2.8	-2.6	-2.0	-0.5	-13.0	-11.3	-12.5	-10.2	-10.4	-10.1
FI	-7.0	2.0	-3.5	-3.7	-1.3	-0.8	-6.0	-2.8	-7.3	-12.0	-6.8	-9.3
SE	:	:	:	:	:	:	0.5	-0.9	-4.4	-7.4	-3.7	-3.8
UK	0.8	0.7	0.1	0.5	1.1	0.9	3.0	2.8	1.9	0.8	0.9	1.6
BG	6.7	5.6	3.0	-8.2	3.7	4.5	4.5	17.0	25.7	14.8	14.0	8.7
RO	-5.9	9.2	-0.7	1.0	4.1	6.2	-8.2	6.2	5.1	0.8	11.4	5.6
TR	:	:	:	:	:	:	:	:	:	:	:	:

Table 6: Employment index for hotels and restaurants (NACE Section H), growth rates (%)

	Quarter on quarter growth rates, seasonally adj. data						Year on year growth rates, gross data					
	Q4-02	Q1-03	Q2-03	Q3-03	Q4-03	Q1-04	Q4-02	Q1-03	Q2-03	Q3-03	Q4-03	Q1-04
EU-25	-0.2	0.0	-0.3	-0.2	-0.3	-0.1	-0.4	0.1	-0.3	-0.3	-0.7	-0.6
EU-15	0.1	0.1	-0.2	-0.1	-0.2	-0.1	-0.5	0.6	-0.1	0.0	-0.7	-0.5
Euro-zone	:	:	:	:	:	:	:	:	:	:	:	:
BE	:	:	:	:	:	:	:	:	:	:	:	:
CZ	-0.1	0.0	-0.3	0.0	0.2	0.0	-0.7	0.3	-0.3	-0.2	-0.2	-0.5
DK	5.6	-1.2	-0.1	3.2	-3.7	:	3.2	3.6	2.9	8.6	-2.5	:
DE	:	:	:	:	:	:	:	:	:	:	:	:
EE	3.7	-1.1	2.6	-0.4	-0.3	-3.1	-2.2	1.5	2.2	2.7	2.7	-1.0
EL	:	:	:	:	:	:	:	:	:	:	:	:
ES	:	:	:	:	:	:	:	:	:	:	:	:
FR	-0.1	0.1	-0.3	-0.3	-0.1	-0.4	1.0	0.6	-0.1	-0.5	-0.8	-1.0
IE	0.2	0.0	0.1	-0.3	0.1	-0.5	0.3	1.6	0.9	-2.3	1.8	0.9
IT	0.4	0.5	0.0	0.4	0.1	0.4	-1.3	1.6	0.9	1.2	0.3	1.1
CY	:	:	:	:	:	:	:	:	:	:	:	:
LV	0.3	0.9	0.1	0.5	0.6	0.4	-2.9	4.1	4.4	4.8	5.2	-0.2
LT	:	:	:	:	:	:	-9.5	3.7	4.4	5.7	4.2	:
LU	:	:	:	:	:	:	:	:	:	:	:	:
HU	0.0	-0.6	0.1	0.1	-0.3	-0.1	1.3	-1.1	-1.5	-1.3	-1.6	-0.6
MT	:	:	:	:	:	:	:	:	:	:	:	:
NL	-0.5	-0.4	-0.6	-0.4	-0.4	-0.5	-1.6	-1.6	-1.9	-1.9	-1.9	-2.0
AT	:	:	:	:	:	:	-2.0	-0.1	0.4	0.0	0.3	-0.7
PL	-0.8	-1.2	-0.2	-0.8	-0.4	0.2	1.9	-2.9	-2.1	-2.1	-1.6	-0.9
PT	-1.5	-0.1	-0.7	-1.2	-0.5	-1.1	-3.9	-2.3	-2.6	-3.7	-2.4	-3.4
SI	0.3	0.3	0.1	0.1	0.4	-0.1	1.0	0.8	0.7	0.2	1.1	-0.1
SK	:	:	:	:	:	:	-5.3	-6.3	-7.1	-7.9	-8.1	-4.2
FI	-2.3	2.1	-2.8	5.6	0.2	1.4	-2.7	1.2	-1.5	3.3	5.8	3.4
SE	:	:	:	:	:	:	0.7	0.9	0.2	-0.2	-1.4	-1.6
UK	0.0	0.1	-0.2	-0.4	-0.4	0.2	-0.9	0.4	-0.3	-0.7	-1.3	-0.9
BG	0.0	0.2	0.1	0.1	-0.1	0.4	-2.5	0.2	0.6	0.8	0.1	0.7
RO	-0.9	0.5	-0.5	-0.2	-1.0	0.1	-4.9	-4.3	-2.6	-2.1	-5.7	-5.3
TR	:	:	:	:	:	:	:	:	:	:	:	:

Table 7: Employment index for transport and communication (NACE Section I), growth rates (%)

Employment index for services (continued)

The evolution of employment in the EU-25 services sector presents a different picture according to the activity observed. Indeed, during the last quarter of 2003, compared to the quarter before, the distribution sector continued to register a growth in the number of persons employed (0.1 %) while a 0.3 % decrease was recorded for both hotels and restaurants and transport and communication. More recent quarter on quarter rates of change are available for the first quarter of 2004 for the EU-25's distribution sector (0.2 %) and transport and communication (-0.1 %) that confirmed this varied evolution in services employment.

Employment in retail trade did not show a clear pattern among the 14 Member States for which the employment index is available for the first quarter of 2004. Indeed, seven of the countries recorded falls ranging from -0.2 % to -9.6 %. Slovakia and Poland registered the most notable increases 4.7 % and 3.2 %, respectively.

For the majority of countries a fall in the number of persons employed was recorded in the hotels and restaurants sector during the first quarter of 2004 compared to the previous quarter. Nonetheless, the fall was less marked than for the final quarter of 2003 in Italy, the Netherlands, Slovakia and Finland.

Transport and communications employment was also marked by a mixed pattern during the first quarter of 2004, as 7 of the 13 Member States for which the employment index is available showed falls and one Member State no change in employment compared to the previous quarter.

Compared to the previous quarter, employment in business services fell in the first quarter of 2004 by 0.2 % in the EU-25 and by 0.1% in both the EU-15 and the euro-zone; this was the first quarterly fall in the index for the EU-25's business services sector since the end of 2002.

	Quarter on quarter growth rates, seasonally adj. data						Year on year growth rates, gross data					
	Q4-02	Q1-03	Q2-03	Q3-03	Q4-03	Q1-04	Q4-02	Q1-03	Q2-03	Q3-03	Q4-03	Q1-04
EU-25	0.9	0.1	0.5	0.5	0.5	-0.2	3.4	2.9	2.1	2.5	2.6	1.7
EU-15	-0.1	0.7	-0.1	0.0	0.0	-0.1	-3.3	-0.8	-3.7	-2.5	0.8	0.1
Euro-zone	-0.1	0.7	-0.1	0.0	0.0	-0.1	-3.3	-0.8	-3.7	-2.5	0.8	0.1
BE	:	:	:	:	:	:	:	:	:	:	:	:
CZ	0.5	-2.5	0.9	1.1	0.8	-1.8	1.4	1.0	1.1	1.0	1.2	0.2
DK	-0.1	0.5	-2.7	0.9	-0.2	:	-3.5	1.5	-6.6	-3.2	-1.9	:
DE	:	:	:	:	:	:	:	:	:	:	:	:
EE	3.3	-0.9	0.9	3.8	3.0	-1.2	20.5	5.3	2.9	-1.9	0.0	9.6
EL	:	:	:	:	:	:	:	:	:	:	:	:
ES	:	:	:	:	:	:	:	:	:	:	:	:
FR	0.5	-1.9	-0.1	-0.6	1.3	-0.6	1.0	-0.6	-1.2	-0.9	-0.1	0.6
IE	-0.1	0.7	-0.1	0.0	0.0	-0.1	-3.3	-0.8	-3.7	-2.5	0.8	0.1
IT	2.5	2.9	-0.6	3.4	0.9	3.0	7.5	9.0	5.6	8.1	5.8	6.2
CY	:	:	:	:	:	:	:	:	:	:	:	:
LV	2.5	3.8	2.6	2.9	2.5	4.5	3.1	10.8	13.4	16.3	18.8	20.4
LT	:	:	:	:	:	:	5.8	8.8	15.7	17.7	16.9	:
LU	:	:	:	:	:	:	:	:	:	:	:	:
HU	-0.8	-1.6	-5.8	-5.7	-5.9	-11.1	2.4	14.0	7.8	9.5	10.4	-21.4
MT	:	:	:	:	:	:	:	:	:	:	:	:
NL	-0.2	-0.6	-0.8	-0.7	-0.8	-1.2	0.0	-1.3	-2.2	-2.3	-3.1	-3.4
AT	:	:	:	:	:	:	2.3	3.1	3.3	2.3	3.6	3.8
PL	1.1	0.3	0.8	0.4	0.4	-0.2	7.3	2.5	3.1	3.0	2.1	0.8
PT	:	:	:	:	:	:	-0.3	-2.8	-3.0	-2.2	0.8	4.4
SI	1.3	1.4	1.5	1.2	1.6	1.3	6.9	5.0	3.9	3.7	4.3	3.5
SK	0.9	-0.7	-0.4	-0.1	2.0	1.0	4.1	1.9	1.4	-1.5	-1.9	2.2
FI	3.0	3.2	-2.9	0.7	1.2	-1.7	3.0	7.3	1.8	0.9	-1.0	-2.7
SE	:	:	:	:	:	:	-3.9	-4.1	-5.1	-4.2	-6.3	-5.0
UK	-0.5	0.4	-0.4	-1.0	-0.7	0.5	-0.1	-0.4	0.1	0.0	0.2	-0.1
BG	:	:	:	:	:	:	:	:	:	:	:	:
RO	:	:	:	:	:	:	:	:	:	:	:	:
TR	:	:	:	:	:	:	:	:	:	:	:	:

Table 8: Employment index for business services (NACE Divisions 72 and 74), growth rates (%)

Hours worked index for total industry (excluding construction)

Hours worked in the industrial economy continued its long-term decline. The number of hours worked in industry fell by 1.2 % in the EU-25 between the first quarter of 2003 and 2004. The corresponding rates of change for the EU-15 and the euro-zone were similar -1.3 % and -1.1 %, respectively.

Latest quarter on quarter growth rates for the first quarter of 2004 showed that the decrease of the number of hours worked in industry was at a faster pace than the previous quarters: The EU-25 figure fell by 0.4 % during the last quarter of 2003 while it fell by 0.8 % during the first quarter of 2004. The EU-15 and the euro-zone indices showed 0.7 % and a 0.5 % falls, respectively for the first quarter of 2004, after having registered lower decreases the quarter before (-0.4 % and -0.3 % respectively).

The overall decline in hours worked for EU-25 industry was mainly due to consumer durable goods, with this MIG registering a 0.9 % decrease of its hours worked index for the first quarter of 2004, compared to the previous quarter. In the four remaining MIGs, decreases were more modest, ranging from -0.1 % for energy to -0.5 % for consumer non-durable goods. In the EU-15 and the euro zone, the highest declines for the first quarter of 2004 were also registered for consumer durable goods.

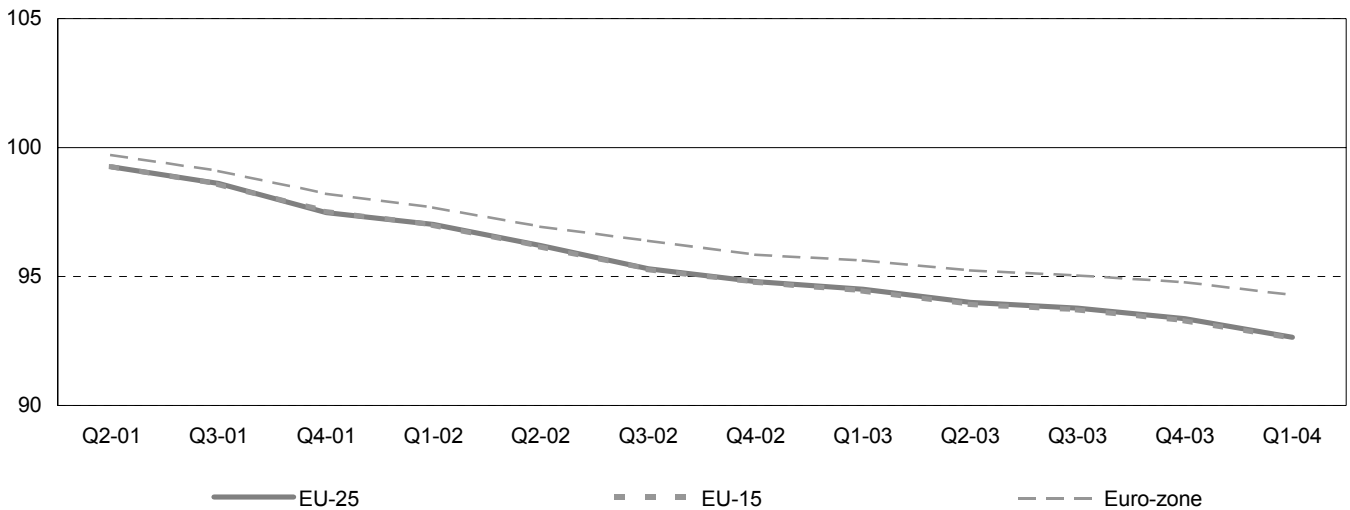


Figure 2: Index of hours worked for total industry (excluding construction), evolution over time, seasonally adjusted data (2000=100)

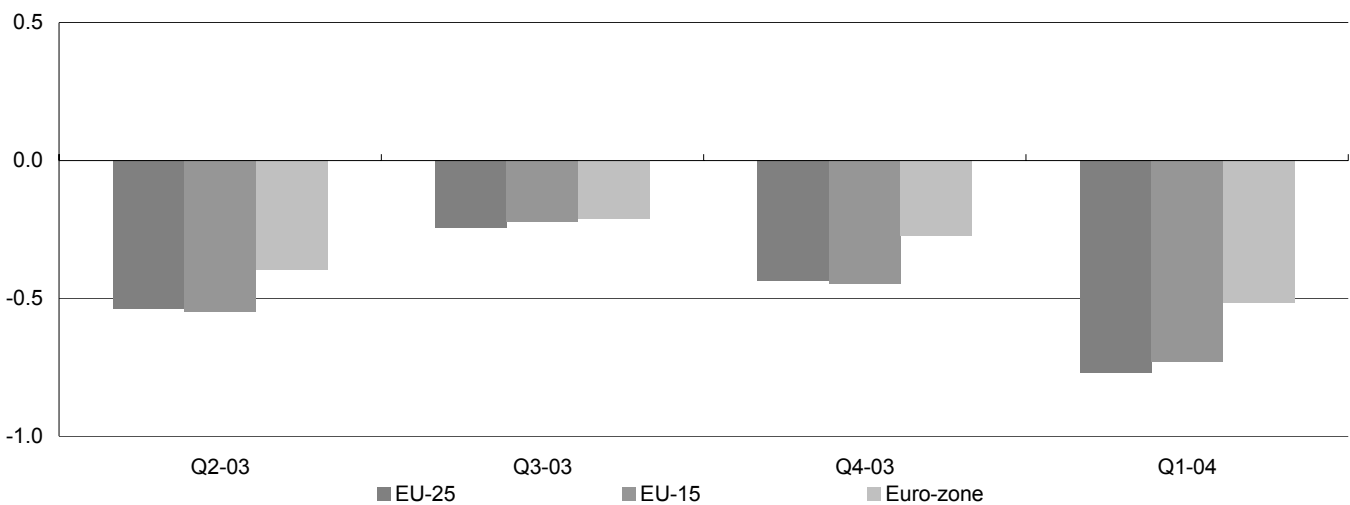


Figure 3: Hours worked index for total industry (excluding construction), growth rates, quarter compared to previous quarter, seasonally adjusted (%)

Hours worked index for total industry (excluding construction) (continued)

On the basis of a quarter on quarter comparison, during the first quarter of 2004, most of the Member States (for which data are available) showed a decrease of their industrial hours worked, reflecting the overall decline registered at the EU-25 level.

		Quarter on quarter growth rates, seasonally adjusted data						Year on year growth rates, gross data					
		Q4-02	Q1-03	Q2-03	Q3-03	Q4-03	Q1-04	Q4-02	Q1-03	Q2-03	Q3-03	Q4-03	Q1-04
Total industry (excluding construction)	EU-25	-0.5	-0.3	-0.5	-0.2	-0.4	-0.8	-2.7	-2.0	-3.0	-1.5	-1.3	-1.2
	EU-15	-0.5	-0.4	-0.6	-0.2	-0.4	-0.7	-2.7	-2.0	-3.1	-1.5	-1.4	-1.3
	Euro-zone	-0.5	-0.2	-0.4	-0.2	-0.3	-0.5	-2.4	-1.3	-2.7	-1.3	-1.0	-1.1
Energy	EU-25	-0.4	-0.1	-0.3	0.2	-0.4	-0.1	-4.7	-3.1	-2.0	-0.2	-0.7	1.3
	EU-15	0.3	-0.3	0.1	0.1	-0.3	1.4	-4.5	-3.1	-2.0	0.1	-0.5	2.0
	Euro-zone	0.0	0.2	0.5	-0.2	0.1	1.3	-5.0	-1.5	-0.8	0.5	0.5	2.6
Intermediate goods	EU-25	-0.2	-0.6	-0.3	-0.1	-0.1	-0.2	-1.6	-1.8	-2.5	-1.3	-1.0	0.0
	EU-15	0.0	-0.7	-0.3	-0.3	0.0	-0.3	-1.6	-1.7	-2.4	-1.4	-1.1	-0.4
	Euro-zone	-0.3	-0.7	-0.1	-0.2	0.1	0.0	-1.1	-1.1	-2.2	-1.3	-0.8	0.1
Capital goods	EU-25	-0.2	-0.1	-0.2	0.3	0.2	-0.3	-1.4	-0.5	-1.9	-0.1	0.4	1.0
	EU-15	-0.2	-0.1	-0.1	0.1	0.1	-0.5	-1.5	-0.6	-2.1	-0.3	0.2	0.7
	Euro-zone	-0.1	0.3	0.0	0.3	0.3	-0.3	-1.1	0.5	-1.2	0.5	1.2	0.9
Consumer durables	EU-25	-1.2	-0.2	-0.7	-0.8	-0.3	-0.9	-5.2	-2.7	-4.4	-3.0	-2.0	-2.1
	EU-15	-0.9	-0.5	-1.1	-0.9	-0.3	-1.3	-5.3	-3.1	-4.9	-3.5	-2.6	-3.0
	Euro-zone	-1.2	-0.3	-0.7	-0.6	-0.5	-0.8	-4.5	-2.4	-3.8	-2.8	-1.9	-2.1
Consumer non-durables	EU-25	-0.4	-0.5	-0.4	-0.4	-0.5	-0.5	-1.6	-1.8	-2.8	-1.0	-1.9	-1.8
	EU-15	0.6	-0.4	-1.0	0.0	-0.5	-0.6	-1.3	-1.5	-2.7	-0.7	-1.7	-1.9
	Euro-zone	0.3	-0.4	-0.6	-0.1	-0.5	-0.4	-0.7	-0.8	-2.2	-0.7	-1.6	-1.5

Table 9: Hours worked index for the MIGs, growth rates (%)

	Quarter on quarter growth rates, seasonally adj. data						Year on year growth rates, gross data					
	Q4-02	Q1-03	Q2-03	Q3-03	Q4-03	Q1-04	Q4-02	Q1-03	Q2-03	Q3-03	Q4-03	Q1-04
EU-25	-0.5	-0.3	-0.5	-0.2	-0.4	-0.8	-2.7	-2.0	-3.0	-1.5	-1.3	-1.2
EU-15	-0.5	-0.4	-0.6	-0.2	-0.4	-0.7	-2.7	-2.0	-3.1	-1.5	-1.4	-1.3
Euro-zone	-0.5	-0.2	-0.4	-0.2	-0.3	-0.5	-2.4	-1.3	-2.7	-1.3	-1.0	-1.1
BE	-1.7	-1.8	-0.3	0.3	-1.5	0.6	-2.9	-4.0	-4.1	-2.4	-4.0	0.4
CZ	:	:	:	:	:	:	:	:	:	:	:	:
DK	-2.9	-0.5	0.1	-2.1	0.4	:	-8.8	-6.1	-6.8	-8.4	3.9	:
DE	-1.0	0.1	-0.5	0.1	-0.3	0.1	-3.9	-0.9	-2.9	-1.2	-0.7	-0.3
EE	:	:	:	:	:	:	:	:	:	:	:	:
EL	:	:	:	:	:	:	:	:	:	:	:	:
ES	:	:	:	:	:	:	0.6	1.9	-4.2	0.0	-0.3	-2.0
FR	-0.5	-0.6	-0.6	-0.6	-0.6	-0.6	-2.7	-2.6	-2.3	-2.2	-2.2	-2.2
IE	:	:	:	:	:	:	:	:	:	:	:	:
IT	-0.3	-0.1	0.3	0.3	0.4	:	3.8	1.1	2.6	4.3	3.7	6.2
CY	:	:	:	:	:	:	:	:	:	:	:	:
LV	-1.6	-0.8	0.5	0.9	-2.3	1.2	-3.2	1.5	0.0	1.9	2.8	2.0
LT	:	:	:	:	:	:	:	:	:	:	:	:
LU	0.3	0.1	-0.3	0.4	-0.1	:	-1.2	-1.6	-1.7	0.9	-0.1	:
HU	-0.8	-0.9	-0.7	-1.0	-0.8	-1.2	-1.6	-2.2	-2.5	-0.9	-0.1	-0.2
MT	:	:	:	:	:	:	:	:	:	:	:	:
NL	-0.8	-0.7	-0.7	-0.9	-0.9	-0.9	-3.3	-3.2	-2.7	-2.9	-3.3	-3.7
AT	-1.0	0.4	-0.3	0.7	-0.2	0.3	-1.7	-2.3	-1.5	0.9	0.7	1.3
PL	:	:	:	:	:	:	:	:	:	:	:	:
PT	-0.5	-1.4	-3.1	0.3	-0.9	-1.0	-3.6	-3.8	-6.4	-4.7	-5.1	-2.9
SI	-0.1	-0.4	0.2	0.1	-0.1	-0.5	0.0	-0.5	-0.2	-0.2	0.4	1.3
SK	-0.5	-4.8	2.9	3.2	0.2	:	-4.3	-4.5	-2.5	0.8	1.2	:
FI	-4.0	-1.4	-1.0	-1.9	0.4	-0.5	-4.1	-5.0	-7.4	-6.9	-3.2	-3.4
SE	c	c	c	c	c	c	c	c	c	c	c	c
UK	1.1	-2.1	-0.9	0.0	-1.2	-0.9	-4.2	-5.7	-5.1	-1.6	-4.1	-3.1
BG	-1.4	1.5	-0.4	2.5	-0.5	2.3	-1.1	2.5	2.9	1.0	1.6	3.5
RO	-0.8	-0.5	0.0	-0.8	-0.7	-0.5	-2.3	-0.9	-1.9	-2.0	-2.0	-1.1
TR	:	:	:	:	:	:	:	:	:	:	:	:

Table 10: Hours worked index for total industry (excluding construction), growth rates (%)

Wages and salaries index for total industry (excluding construction)

The pace at which wages and salaries grew in the EU-25's industrial sector in the first quarter of 2004 was at its highest for the 3 previous years (since the second quarter of 2001), while in the previous quarter (the final quarter of 2003) it had been at its lowest point for the whole of 2003. Wages and salaries rose by 0.7 % in the EU-25 and by 0.6 % in both the EU-15 and the euro-zone during the first quarter of 2004, compared to the quarter before.

Among the MIGs, growths of industrial wages and salaries were recorded in the EU-25, the EU-15 and the euro zone. In the EU-25 the fastest growth in industrial wages and salaries among the five MIGs for the first quarter of 2004 (compared to the quarter before) was recorded in capital goods (1.2 %). This was also the case during the last quarter of 2003. The slowest increase was recorded for consumer durables (0.2 %), contrasting nonetheless with the fall registered for the previous quarter (-0.3 %).

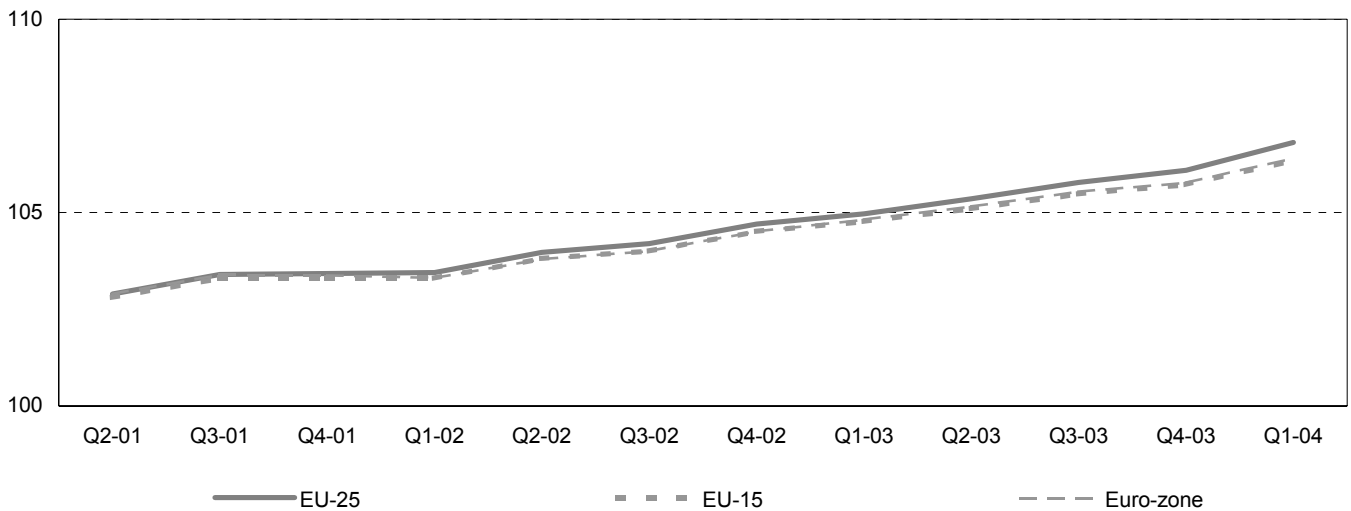


Figure 4: Wages and salaries index for total industry (excluding construction), evolution over time, seasonally adjusted data (2000=100)

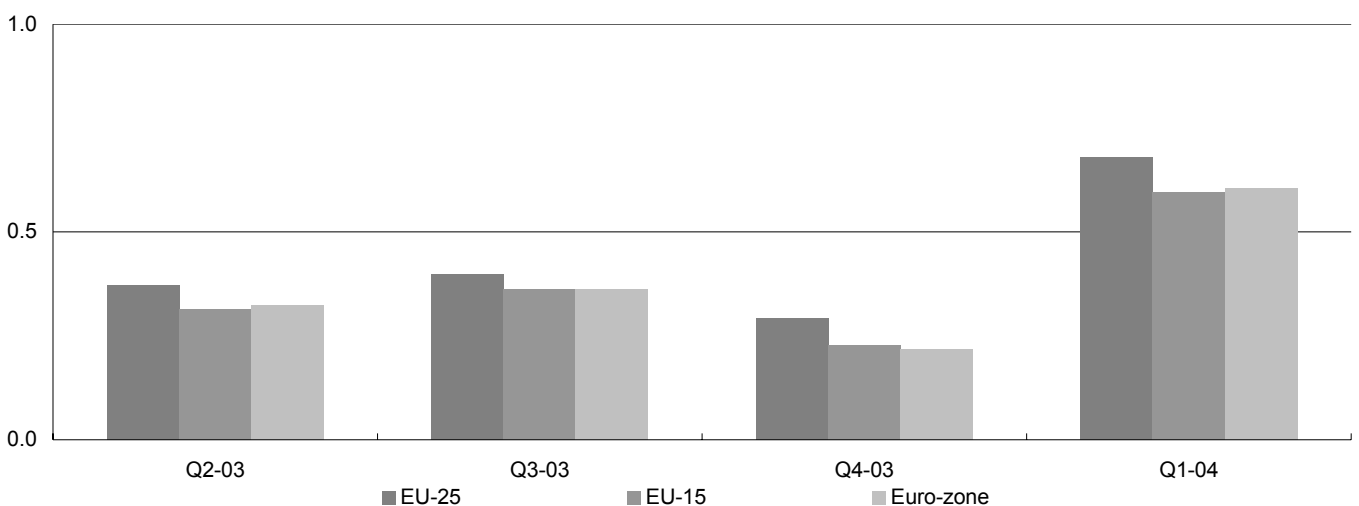


Figure 5: Wages and salaries index for total industry (excluding construction), growth rates, quarter compared to previous quarter, seasonally adjusted (%)

Wages and salaries index for total industry (excluding construction) (continued)

Looking at the Member States indices for wages and salaries, only Belgium recorded a fall (-0.8 %) for the first quarter of 2004, compared to the quarter before. In Germany, the Netherlands and Portugal, fall registered for the last quarter of 2003 turned positive during the first quarter of 2004.

		Quarter on quarter growth rates, seasonally adjusted data						Year on year growth rates, gross data					
		Q4-02	Q1-03	Q2-03	Q3-03	Q4-03	Q1-04	Q4-02	Q1-03	Q2-03	Q3-03	Q4-03	Q1-04
Total industry (excluding construction)	EU-25	0.5	0.3	0.4	0.4	0.3	0.7	1.1	1.6	1.4	1.5	1.1	2.0
	EU-15	0.5	0.2	0.3	0.4	0.2	0.6	1.0	1.6	1.3	1.4	0.9	1.7
	Euro-zone	0.5	0.3	0.3	0.4	0.2	0.6	0.9	1.6	1.4	1.5	0.9	1.7
Energy	EU-25	0.3	0.1	0.6	0.3	0.2	0.3	1.5	0.2	1.6	1.2	0.1	3.0
	EU-15	0.3	0.1	0.5	0.2	0.1	0.3	1.6	0.2	1.5	1.2	-0.4	2.6
	Euro-zone	0.3	0.0	0.5	0.2	0.0	0.2	1.5	0.0	1.3	1.0	-0.5	2.5
Intermediate goods	EU-25	0.3	0.4	0.2	0.5	0.2	0.7	0.4	1.6	1.1	1.5	1.1	1.9
	EU-15	0.3	0.4	0.2	0.5	0.2	0.7	0.3	1.6	1.0	1.5	1.0	1.6
	Euro-zone	0.3	0.4	0.2	0.5	0.1	0.7	0.2	1.5	1.0	1.4	0.9	1.7
Capital goods	EU-25	0.6	0.6	0.6	0.2	0.4	1.2	2.3	3.3	2.8	1.9	1.5	2.5
	EU-15	0.6	0.6	0.5	0.2	0.3	1.1	2.2	3.3	2.7	1.8	1.3	2.2
	Euro-zone	0.6	0.8	0.5	0.2	0.3	1.0	2.1	3.5	3.1	2.1	1.5	2.0
Consumer durables	EU-25	-0.1	-0.2	-0.5	0.2	-0.3	0.2	-1.8	-0.8	-1.7	-0.6	-1.1	-0.2
	EU-15	-0.2	-0.4	-0.7	0.0	-0.5	0.1	-2.0	-1.2	-2.2	-1.3	-1.8	-0.9
	Euro-zone	-0.1	-0.3	-0.8	0.1	-0.5	0.1	-2.0	-1.1	-2.2	-1.1	-1.7	-1.0
Consumer non-durables	EU-25	0.8	0.4	0.3	0.5	0.1	0.5	1.3	1.7	1.4	2.1	1.0	1.4
	EU-15	0.8	0.4	0.2	0.5	0.0	0.5	1.3	1.7	1.3	2.2	0.9	1.2
	Euro-zone	0.8	0.4	0.3	0.6	-0.1	0.5	1.3	1.8	1.5	2.3	0.9	1.3

Table 11: Wages and salaries index for the MIGs, growth rates (%)

	Quarter on quarter growth rates, seasonally adj. data						Year on year growth rates, gross data					
	Q4-02	Q1-03	Q2-03	Q3-03	Q4-03	Q1-04	Q4-02	Q1-03	Q2-03	Q3-03	Q4-03	Q1-04
EU-25	0.5	0.3	0.4	0.4	0.3	0.7	1.1	1.6	1.4	1.5	1.1	2.0
EU-15	0.5	0.2	0.3	0.4	0.2	0.6	1.0	1.6	1.3	1.4	0.9	1.7
Euro-zone	0.5	0.3	0.3	0.4	0.2	0.6	0.9	1.6	1.4	1.5	0.9	1.7
BE	6.5	-1.4	-0.8	0.4	-0.9	-0.8	-1.0	-3.1	-6.4	-1.7	-2.3	-1.6
CZ	0.7	3.7	0.1	1.0	0.7	2.3	3.5	2.6	4.2	3.2	6.3	8.5
DK	0.4	-0.8	0.9	-0.2	0.1	:	1.6	0.4	-1.2	0.1	-0.3	:
DE	-0.1	1.2	-0.3	-0.1	-0.1	0.2	-0.9	1.5	1.0	0.6	0.5	0.8
EE	2.2	0.3	0.3	3.3	0.2	6.4	11.0	13.2	7.7	10.6	8.5	10.3
EL	:	:	:	:	:	:	:	:	:	:	:	:
ES	:	:	:	:	:	:	5.1	5.0	4.7	4.3	2.8	3.1
FR	0.3	0.8	0.2	-0.5	0.2	1.2	0.8	0.8	0.4	0.8	0.2	1.7
IE	:	:	:	:	:	:	:	:	:	:	:	:
IT	0.6	0.4	0.9	0.8	0.9	1.1	3.1	1.3	2.3	3.4	3.4	4.8
CY	:	:	:	:	:	:	:	:	:	:	:	:
LV	2.2	2.3	2.5	2.6	2.7	3.0	6.3	10.4	13.8	9.9	11.3	13.1
LT	:	:	:	:	:	:	:	:	:	:	:	:
LU	0.7	0.0	-0.5	1.2	0.3	:	1.4	0.6	-0.6	1.7	1.6	:
HU	1.9	1.9	1.8	1.6	1.3	1.8	7.8	6.3	7.0	7.2	8.1	10.5
MT	:	:	:	:	:	:	:	:	:	:	:	:
NL	0.6	-0.2	-0.2	-0.3	-1.3	0.7	1.0	1.0	0.5	0.0	-1.4	-0.9
AT	-0.7	1.5	0.3	-0.4	1.1	0.0	-0.7	1.2	0.6	0.2	2.1	1.8
PL	-1.2	1.6	0.0	2.1	1.1	1.8	-2.0	-1.4	0.6	0.3	2.3	5.8
PT	0.0	-1.3	-1.0	-1.3	-0.4	3.3	0.2	-1.3	-1.3	-2.9	-3.1	0.9
SI	2.7	1.2	2.0	1.8	2.0	1.0	11.6	7.7	8.0	7.6	7.0	7.9
SK	:	:	:	:	:	:	:	:	:	:	:	:
FI	0.5	-0.1	1.0	0.8	0.0	1.5	1.1	1.3	1.2	2.2	2.1	4.3
SE	c	c	c	c	c	c	c	c	c	c	c	c
UK	:	:	:	:	:	:	:	:	:	:	:	:
BG	1.7	1.8	1.7	1.9	2.1	2.9	2.4	6.5	6.1	5.6	5.1	6.4
RO	4.0	9.3	3.5	4.5	3.1	4.1	15.4	20.2	16.5	17.1	18.3	17.0
TR	:	:	:	:	:	:	:	:	:	:	:	:

Table 12: Wages and salaries index for total industry (excluding construction), growth rates (%)

Labour input indices for industrial Divisions of NACE

EU-25

NACE Rev. 1 heading (code)	Employment					Hours worked					Wages and salaries				
	Q1-03	Q2-03	Q3-03	Q4-03	Q1-04	Q1-03	Q2-03	Q3-03	Q4-03	Q1-04	Q1-03	Q2-03	Q3-03	Q4-03	Q1-04
Mining of coal and lignite	10	84.0	82.7	81.7	80.4	79.4	77.3	75.8	75.5	:	85.8	84.9	83.1	82.5	86.6
Gas and oil extraction	11	91.8	91.8	90.8	89.5	87.5	:	:	:	:	:	:	:	:	:
Uranium & thorium mining	12	87.5	86.5	86.6	87.2	88.6	89.6	89.9	90.4	91.8	:	:	:	:	:
Mining of metal ores	13	89.6	88.3	:	:	:	90.4	87.5	84.2	:	105.4	113.0	:	:	:
Other non-metallic mining	14	93.7	91.7	91.1	89.5	87.9	94.7	93.3	92.3	:	102.0	102.1	102.1	102.0	103.4
Food and beverages	15	98.4	98.0	97.7	97.3	97.1	97.4	97.1	96.8	96.4	107.7	108.4	108.8	109.0	109.5
Tobacco	16	97.4	101.4	105.8	113.8	111.5	89.4	86.5	83.7	:	106.3	106.2	106.4	105.9	106.2
Textiles	17	87.7	85.5	84.5	83.2	82.6	92.8	91.6	91.1	91.4	99.0	98.4	98.2	97.3	97.2
Clothing	18	85.0	84.3	81.1	79.2	78.8	89.0	86.3	87.1	85.9	96.0	95.6	95.3	95.3	95.3
Leather products	19	91.8	90.1	89.4	86.7	85.0	:	:	:	:	103.8	101.7	103.0	101.1	101.5
Wood products	20	95.0	94.9	94.0	93.4	93.3	91.3	89.9	90.2	90.7	98.5	98.8	98.9	99.1	99.7
Pulp & paper	21	96.4	95.2	95.4	94.9	95.1	97.7	97.8	97.8	98.1	105.9	106.2	106.5	106.6	107.3
Publishing & printing	22	96.6	95.9	96.0	95.7	95.3	96.3	96.1	95.7	95.6	101.4	101.5	101.3	101.0	101.5
Fuel products	23	91.7	91.1	89.5	89.5	86.9	95.1	94.5	93.0	92.6	105.5	104.5	103.7	104.1	104.5
Chemicals	24	99.3	99.0	98.4	98.1	97.1	99.2	99.3	99.6	99.7	107.4	107.8	108.6	108.9	109.5
Rubber & plastic	25	100.6	100.8	100.7	101.3	101.8	100.0	99.8	100.0	99.9	106.6	107.4	107.8	108.8	109.5
Non-metallic minerals	26	94.9	94.4	93.6	93.2	92.5	94.7	94.3	94.4	94.2	100.8	101.0	101.2	101.6	102.0
Basic metals	27	93.3	92.4	91.9	91.2	90.1	93.8	93.4	93.3	93.0	102.4	102.6	102.8	102.1	104.3
Metal products	28	99.5	99.2	98.4	97.5	97.7	97.8	98.0	97.9	98.2	106.4	106.8	107.5	107.6	108.8
Machinery	29	98.0	97.3	96.5	96.1	95.3	98.1	97.9	98.6	99.0	105.8	106.3	106.4	106.8	108.0
Office machinery	30	83.7	83.0	82.7	81.6	79.9	85.9	86.3	86.3	88.9	91.0	90.8	90.3	88.9	85.8
Electrical machinery	31	96.6	95.7	94.9	94.7	95.2	98.9	98.7	98.8	99.2	105.6	105.7	106.2	105.7	108.8
Radio/TV/communication	32	88.5	88.3	86.3	85.9	85.0	91.4	90.5	91.0	91.5	103.8	102.8	102.7	101.8	102.1
Medical and optical	33	102.2	101.6	101.5	101.2	101.9	100.9	99.3	100.7	100.6	108.1	108.6	109.0	110.0	112.8
Motor vehicles	34	100.8	100.8	100.7	100.5	100.6	100.5	100.5	101.2	102.2	111.1	111.8	111.8	112.9	114.8
Other transport	35	96.1	95.0	94.9	94.6	95.3	100.0	99.3	99.7	99.1	109.6	109.7	111.1	111.0	111.7
Furniture & other manf.	36	96.4	96.4	96.1	95.4	95.3	94.4	93.7	93.2	92.8	100.6	100.2	100.2	100.1	100.1
Recycling	37	110.5	108.6	108.1	109.6	109.7	103.3	103.3	103.3	102.7	120.1	113.2	121.6	122.7	122.5
Energy/hot water supply	40	93.5	93.0	92.5	91.8	91.3	121.0	128.6	138.9	137.7	105.7	107.1	107.5	107.1	:
Water	41	102.3	102.5	103.0	102.7	104.4	111.7	114.7	117.3	117.6	109.7	110.1	111.0	111.2	:
Construction	45	98.8	98.6	97.9	97.8	99.2	96.1	96.1	96.7	97.0	103.6	103.9	104.3	104.7	105.3

EURO-ZONE

NACE Rev. 1 heading (code)	Employment					Hours worked					Wages and salaries					
	Q1-03	Q2-03	Q3-03	Q4-03	Q1-04	Q1-03	Q2-03	Q3-03	Q4-03	Q1-04	Q1-03	Q2-03	Q3-03	Q4-03	Q1-04	
Mining of coal and lignite	10	78.1	76.2	75.3	73.8	73.1	77.2	75.8	75.8	75.4	75.6	78.5	77.4	74.3	72.4	76.3
Gas and oil extraction	11	93.3	92.1	90.2	90.5	89.8	99.1	97.3	95.6	95.3	95.6	109.6	110.6	109.7	111.2	110.7
Uranium & thorium mining	12	:	:	:	:	:	:	:	:	:	:	:	:	:	:	:
Mining of metal ores	13	:	:	:	:	:	:	:	:	:	:	:	:	:	:	:
Other non-metallic mining	14	101.7	99.5	98.6	96.5	95.2	94.3	93.1	92.4	92.3	92.1	103.3	103.4	103.4	103.4	104.7
Food and beverages	15	100.4	100.0	100.0	99.6	99.7	97.9	97.6	97.4	97.1	96.9	107.4	107.9	108.9	108.9	109.5
Tobacco	16	103.3	109.8	117.0	129.8	128.2	89.0	87.0	86.5	86.4	87.7	106.7	105.1	106.3	108.3	106.9
Textiles	17	90.3	88.6	87.6	85.8	84.8	94.2	92.9	92.5	93.1	91.1	98.8	98.2	98.0	96.9	96.7
Clothing	18	89.8	89.5	86.4	84.5	84.1	91.0	87.9	89.1	88.0	85.7	96.0	95.5	95.2	95.3	95.4
Leather products	19	96.4	95.0	94.6	91.6	90.3	:	:	:	:	:	104.1	102.2	103.4	101.9	101.9
Wood products	20	96.7	96.0	94.6	93.0	92.9	92.2	90.5	89.8	89.6	88.9	98.3	98.4	98.5	98.5	99.0
Pulp & paper	21	97.5	95.9	95.8	95.1	95.6	98.3	98.0	98.0	98.0	97.6	105.8	106.0	106.4	106.4	107.1
Publishing & printing	22	97.5	96.9	96.5	96.5	96.2	97.5	97.2	96.8	96.5	96.0	101.9	102.1	101.8	101.3	102.0
Fuel products	23	97.0	96.2	94.9	94.2	92.7	99.3	98.9	97.6	97.3	97.1	105.8	104.6	103.7	103.9	104.1
Chemicals	24	100.6	100.5	99.8	99.4	98.6	100.2	100.1	100.3	99.9	99.6	107.0	107.4	108.1	108.4	109.0
Rubber & plastic	25	100.7	100.5	100.2	100.8	100.3	98.2	98.4	98.2	98.2	98.7	105.7	106.3	106.6	107.4	108.0
Non-metallic minerals	26	98.4	97.8	96.3	95.4	95.0	95.1	94.8	94.5	94.3	94.0	100.8	101.0	101.2	101.5	101.7
Basic metals	27	98.9	98.1	97.8	97.1	96.3	94.9	94.6	94.7	94.6	95.0	102.6	103.0	103.2	102.3	104.0
Metal products	28	100.3	100.0	99.1	98.6	98.9	98.7	98.5	98.4	98.5	98.2	106.3	106.8	107.2	107.3	108.3
Machinery	29	100.7	100.3	99.6	98.9	97.9	99.0	99.4	99.7	99.9	99.7	106.6	107.2	106.8	106.5	107.8
Office machinery	30	80.8	79.5	78.1	76.6	75.5	81.1	80.2	79.7	80.4	78.0	89.7	89.6	88.5	86.9	85.0
Electrical machinery	31	95.9	94.3	93.3	92.6	93.9	97.4	96.9	96.5	96.9	96.2	103.4	103.4	103.8	103.6	105.4
Radio/TV/communication	32	94.2	94.1	91.9	91.1	89.3	93.4	92.1	92.2	92.7	91.7	104.6	103.4	103.7	102.9	103.6
Medical and optical	33	103.6	102.2	103.2	103.5	105.5	101.8	100.6	102.0	102.2	103.2	108.8	109.4	109.8	110.6	112.7
Motor vehicles	34	101.1	101.5	101.2	101.0	101.0	99.6	99.6	100.3	101.1	102.0	109.9	111.0	111.8	112.9	114.0
Other transport	35	99.8	99.0	99.1	98.7	100.3	100.6	99.5	99.9	99.3	98.1	110.0	110.3	111.2	111.4	112.0
Furniture & other manf.	36	96.8	96.1	95.5	94.6	93.6	95.5	94.5	93.5	93.3	92.3	100.2	99.4	99.4	99.1	99.1
Recycling	37	112.4	111.3	111.2	111.8	111.2	106.8	106.4	105.6	104.5	105.6	120.3	111.9	121.1	122.0	120.8
Energy/hot water supply	40	93.9	93.7	93.0	92.4	:	140.0	141.8	141.1	142.8	139.8	105.0	107.2	107.2	107.2	108.8
Water	41	105.1	106.2	107.6	107.6	109.7	126.3	129.1	127.4	128.2	126.4	109.6	110.2	109.5	108.9	109.6
Construction	45	99.9	100.2	99.6	99.2	100.0	94.5	94.3	94.6	94.9	95.1	101.3	101.6	101.8	102.0	102.4

Table 13: Indices in the EU, seasonally adjusted, 2000=100 (1)

➤ ESSENTIAL INFORMATION – METHODOLOGICAL NOTES

Labour input indices shown in this publication represent in general the evolution of the labour market in the economy. Business statistics aim at providing information for the analysis of the economic cycle.

The **legal basis** for these labour input indicators is the Council Regulation No 1165/98 of 19th of May 1998 concerning short-term statistics, which is currently in the process of implementation.

The Short Term Business Statistics section of Eurostat (D3/EBT) compiles in particular the following three labour input indicators:

The index of the **number of persons employed** monitors the development of employment in industry and services in terms of total numbers. This indicator may be approximated by the number of employees.

The index of **hours worked** shows the development in the total volume of work done. Lastly, it is the objective of the index of **wages and salaries** to show the evolution of the total amount of wages and salaries paid.

Employment index

The number of persons employed is defined as the total number of persons working in an observation unit (inclusive of working proprietors, partners working regularly in the unit and unpaid family workers), as well as persons who work outside the unit who belong to it and are paid by it (e.g. sales representatives, delivery personnel, repair and maintenance teams). It includes persons absent for a short period (e.g. sick leave, paid leave or special leave), and also those on strike, but not those absent for an indefinite period. It also includes part-time workers who are regarded as such under the laws of the country concerned and who are on the payroll, as well as seasonal workers, apprentices and home workers on the payroll. The number of persons employed excludes manpower supplied to the unit by other enterprises, persons carrying out repair and maintenance work in the observation unit on behalf of other enterprises, as well as those on compulsory military service.

Hours worked index

The total number of hours worked by employees represents the aggregate number of hours actually worked for the observation unit during the reference period. This variable excludes hours paid but not actually worked such as for annual leave, holidays and sickness leave. It also excludes meal breaks and commuting between home and work. Included are hours actually worked during normal working hours; hours worked in addition to those; time which is spent at the place of work on tasks such as preparing the site and time corresponding to short periods of rest at the work place. If the exact number of hours actually worked is not known, it may be estimated on the basis of the theoretical number of working hours and the average rate of absences (sickness, maternity, etc.).

Wages and salaries index

Wages and salaries include all gratuities, bonuses, ex gratia payments, 13th month payments, severance payments, lodging, transport, cost-of-living, and family allowances, tips, commission, attendance fees, etc. received by employees, as well as taxes, social security contributions and other amounts payable by employees and withheld at source by the employer. Payments for agency workers are not included in wages and salaries.

The seasonally adjusted euro-zone, EU-15 and EU-25 series are calculated by aggregating the gross series supplied by each Member States and then performing an adjustment for seasonal effects on the resulting series. Therefore, the seasonally adjusted figures for total industry (excluding construction) are based directly on the gross series for European aggregates and not on an aggregation of the seasonally adjusted indices for individual Member States. Figures may therefore differ from those for the aggregation of the MIGs mainly for the following reasons:

- a) the minimum threshold required for euro-zone, EU-15 and EU-25 totals to be calculated is 60%. Hence, depending on the countries that provide data, there may be different countries used from one aggregate to another and one series to another;
- b) there may be a lack of coherence in Member States data between the MIGs and total industry that affects the overall coherence of the euro-zone, EU-15 and EU-25 data;

- c) the euro-zone, EU-15 and EU-25 indices correspond exactly to the aggregation of the countries' respective indices; however, the data published are growth rates of these indices and as such this may create small discrepancies;
- d) discrepancies may also be introduced by conversions done to create monthly and quarterly data in all presentations.

The **weights** for the index come from the Structural Business Statistics database or directly from Member States. Weights and base year are revised every five years. **The current base year is 2000.**

Member States shall transmit a gross index, although they may also transmit seasonally adjusted and trend-cycle indices. Eurostat publishes nationally adjusted data if available, otherwise, it performs the adjustment itself.

Gross data from Member States are aggregated in order **to compile euro-zone, EU-15 and EU-25 series**. Seasonally adjusted euro-zone, EU-15 and EU-25 series are then produced using the TRAMO & SEATS method. Missing components for euro-zone, EU-15 and EU-25 aggregates are estimated using an ARIMA method. When calculating the data for European aggregates (euro-zone, EU-15 and EU-25) Eurostat makes use of confidential data.

Abbreviations and symbols

- : not available
- c confidential

For more information please contact the short-term statistics section of unit D3, Eurostat:

Romy Becker-Schneider

Tel.: (352) 4301-35062

Fax: (352) 4301-34359

romy.becker-schneider@cec.eu.int

Further information:

➤ Reference publications

Title Quarterly Panorama of European business statistics
 Subscription number VPA000 Price EUR 100

➤ Databases

NewCronos, Theme 4, Domain: ebt

To obtain information or to order publications, databases and special sets of data, please contact the **Data Shop** network:

DANMARK	DEUTSCHLAND	ESPAÑA	FRANCE	ITALIA – Roma
DANMARKS STATISTIK Bibliotek og Information Eurostat Data Shop Sejrogade 11 DK-2100 KØBENHAVN Ø Tlf. (45) 39 17 30 30 Fax (45) 39 17 30 03 E-mail: bib@dst.dk URL: http://www.dst.dk/bibliotek	Statistisches Bundesamt Eurostat Data Shop Berlin Otto-Braun-Straße 70-72 (Eingang: Karl-Marx-Allee) D-10178 Berlin Tel. (49) 1888-644 94 27/28 (49) 611 75 94 27 Fax (49) 1888-644 94 30 E-Mail: datashop@destatis.de URL: http://www.eu-datashop.de/	INE Eurostat Data Shop Paseo de la Castellana, 183 Despacho 011B Entrada por Estébanez Caldeón E-28046 MADRID Tel. (34) 915 839 167/ 915 839 500 Fax (34) 915 830 357 E-mail: datashop.eurostat@ine.es URL: http://www.ine.es/produsen/datashop/index.html <i>Member of the MIDAS Net</i>	INSEE Info Service Eurostat Data Shop 195, rue de Bercy Tour Gamma A F-75582 PARIS CEDEX 12 Tél. (33) 1 53 17 88 44 Fax (33) 1 53 17 88 22 E-mail: datashop@insee.fr <i>Member of the MIDAS Net</i>	ISTAT Centro di informazione statistica Sede di Roma Eurostat Data Shop Via Cesare Balbo, 11a I-00184 Roma Tel. (39) 06 46 73 32 28 Fax (39) 06 46 73 31 01/ 07 E-mail: datashop@istat.it URL: http://www.istat.it/Prodotti-e/Allegati/Eurostatdatashop.html <i>Member of the MIDAS Net</i>
ITALIA – Milano	NEDERLAND	PORTUGAL	SUOMI/FINLAND	SVERIGE
ISTAT Ufficio Regionale per la Lombardia Eurostat Data Shop Via Fieno 3 I-20123 MILANO Tel. (39) 02 80 61 32 460 Fax (39) 02 80 61 32 304 E-mail: mileuro@tin.it URL: http://www.istat.it/Prodotti-e/Allegati/Eurostatdatashop.html <i>Member of the MIDAS Net</i>	Centraal Bureau voor de Statistiek Eurostat Data Shop - Voorburg Postbus 4000 NL-2270 JM VOORBURG Nederland Tel. (31) 70 337 49 00 Fax (31) 70 337 59 84 E-mail: datashop@cbs.nl URL: www.cbs.nl/eurodatashop	Eurostat Data Shop Lisboa INE/Serviço de Difusão Av. António José de Almeida, 2 P-1000-043 LISBOA Tel. (351) 21 842 61 00 Fax (351) 21 842 63 64 E-mail: data.shop@ine.pt	Statistics Finland Eurostat Data Shop Helsinki Tilastokirjasto PL 2B FIN-00022 Tilastokeskus Työpajakatu 13 B, 2.Kerros, Helsinki P. (358) 9 17 34 22 21 F. (358) 9 17 34 22 79 Sähköposti: datashop@stat.fi URL: http://tilastokeskus.fi/tup/datashop/index.html	Statistics Sweden Information service Eurostat Data Shop Karlavägen 100 - Box 24 300 S-104 51 STOCKHOLM Tfn (46) 8 50 69 48 01 Fax (46) 8 50 69 48 99 E-post: infoservice@scb.se URL: http://www.scb.se/templates/Standard_22884.asp
UNITED KINGDOM	NORGE	SCHWEIZ/SUISSE/SVIZZERA	UNITED STATES OF AMERICA	
Eurostat Data Shop Office for National Statistics Room 1.015 Cardiff Road Newport South Wales NP10 8XG United Kingdom Tel. (44) 1633 81 33 69 Fax (44) 1633 81 33 33 E-mail: eurostat.datashop@ons.gov.uk	Statistics Norway Library and Information Centre Eurostat Data Shop Kongens gate 6 Boks 8131 Dep. N-0033 OSLO Tel. (47) 21 09 46 42 / 43 Fax (47) 21 09 45 04 E-mail: Datashop@ssb.no URL: http://www.ssb.no/biblioteket/datashop/	Statistisches Amt des Kantons Zürich Eurostat Data Shop Bleicherweg 5 CH-8090 Zürich Tel. (41) 1 225 12 12 Fax (41) 1 225 12 99 E-mail: datashop@statistik.zh.ch URL: http://www.statistik.zh.ch	Harver Analytics Eurostat Data Shop 60 East 42nd Street Suite 3310 NEW YORK, NY 10165 USA Tel. (1) 212 986 93 00 Fax (1) 212 986 69 81 E-mail: eurodata@haver.com URL: http://www.haver.com/	

Media Support Eurostat (for professional journalists only):

Bech Building Office A4/017 • L-2920 Luxembourg • Tel. (352) 4301 33408 • Fax (352) 4301 35349 • e-mail: eurostat-mediasupport@cec.eu.int

For information on methodology:

Romy Becker-Schneider, Eurostat / D3, L-2920 Luxembourg, Tel. (352) 4301 35062, Fax (352) 4301 34359,
 E-mail: Romy.Becker-Schneider@cec.eu.int

ORIGINAL: English

Please visit our web site at www.europa.eu.int/comm/eurostat/ for further information!

A list of worldwide sales outlets is available at the **Office for Official Publications of the European Communities**.

2 rue Mercier – L-2985 Luxembourg
 Tel. (352) 2929 42118 Fax (352) 2929 42709
 URL: <http://publications.eu.int>
 E-mail: info-info-opoce@cec.eu.int

BELGIQUE/BELGIË – DANMARK – DEUTSCHLAND – GREECE/ELLADA – ESPAÑA – FRANCE – IRELAND – ITALIA – LUXEMBOURG – NEDERLAND – ÖSTERREICH
 PORTUGAL – SUOMI/FINLAND – SVERIGE – UNITED KINGDOM – ÍSLAND – NORGE – SCHWEIZ/SUISSE/SVIZZERA – BALGARIJA – ČESKÁ REPUBLIKA – CYPRUS
 EESTI – HRVATSKA – MAGYARORSZÁG – MALTA – POLSKA – ROMÂNIA – RUSSIA – SLOVAKIA – SLOVENIA – TÜRKIYE – AUSTRALIA – CANADA – EGYPT – INDIA
 ISRAËL – JAPAN – MALAYSIA – PHILIPPINES – SOUTH KOREA – THAILAND – UNITED STATES OF AMERICA