

Statistics in focus

INDUSTRY, TRADE AND SERVICES

25/2004

Author in Eurostat
Carmen Lipp-Lingua

Contents

Production index for the main industrial groupings (MIGs) and total industry (excluding construction) 2

Production index for the main industrial groupings (MIGs) 3

Production index for industrial NACE Divisions in the EU 6

Production index for three largest NACE Divisions within total industry (excluding construction) 7

Manufacturing industries working on orders 9



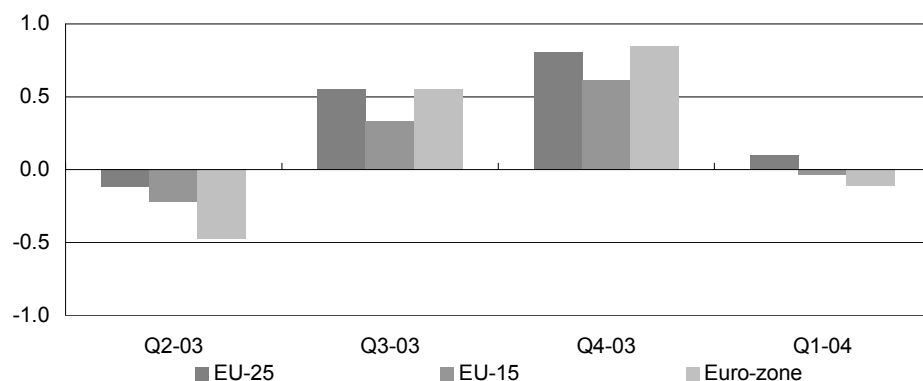
Manuscript completed on: 01.06.2004
ISSN 1561-4840
Catalogue number: KS-NP-04-025-EN-N
© European Communities, 2004

Latest developments for the production and new orders indices for total industry (excluding construction)

during the first quarter of 2004

After having recorded relatively high growth rates in the second half of 2003, the industrial production index for total industry (excluding construction) in the EU-25 showed almost no change in the first quarter of 2004, rising by 0.1 % compared to the quarter before. A similar comparison for the EU-15 showed that there was no change in industrial output in the first quarter of 2004, while in the euro-zone production fell by 0.1 %.

On the basis of a comparison with the same quarter of a year before, industrial output in the EU-25 rose by 1.4 % in the first quarter of 2004, which was considerably higher than the corresponding growth rates recorded in either the EU-15 (0.7 %) or the euro-zone (0.8 %). For all of these European aggregates, the latest growth rates for the first quarter of 2004 were lower than those registered in the final quarter of 2003.



	Quarter on quarter growth rates, seasonally adjusted data			Year on year growth rates, working day adjusted data			
	EU-25	EU-15	Euro-zone	EU-25	EU-15	Euro-zone	
Q2-03	-0.1	-0.2	-0.5	Q2-03	-0.3	-0.6	-0.8
Q3-03	0.6	0.3	0.6	Q3-03	0.4	0.0	-0.1
Q4-03	0.8	0.6	0.8	Q4-03	1.7	1.2	1.4
Q1-04	0.1	0.0	-0.1	Q1-04	1.4	0.7	0.8

Table 1: Production index for total industry (excluding construction), growth rates (%)

Data extracted: 26.05.2004

Production index for the main industrial groupings (MIGs) and total industry (excluding construction)

The slowdown in the pace at which industrial output was expanding in the first quarter of 2004 could be attributed (in the main) to the capital goods sector, where production fell

by 0.5 % in the EU-25, by 0.8 % in the EU-15 and by 1.0 % in the euro-zone (compared to the previous quarter). Most of the remaining MIGs reported little change in their

output, except for energy, where output rose by 0.9 % in the EU-25 and EU-15 and by 1.8 % in the euro-zone.

		Quarter on quarter growth rates, seasonally adjusted data						Year on year growth rates, working day adjusted data					
		Q4-02	Q1-03	Q2-03	Q3-03	Q4-03	Q1-04	Q4-02	Q1-03	Q2-03	Q3-03	Q4-03	Q1-04
Total industry (excluding construction)	EU-25	-0.3	0.3	-0.1	0.6	0.8	0.1	1.0	0.8	-0.3	0.4	1.7	1.4
	EU-15	-0.2	0.2	-0.2	0.3	0.6	0.0	0.8	0.6	-0.6	0.0	1.2	0.7
	Euro-zone	-0.5	0.3	-0.5	0.6	0.8	-0.1	1.3	0.9	-0.8	-0.1	1.4	0.8
Total industry without energy (excluding construction)	EU-25	-0.5	0.1	-0.1	0.6	1.1	0.0	1.2	0.5	-0.4	0.1	1.9	1.7
	EU-15	-0.6	0.1	-0.2	0.5	1.0	-0.2	0.9	0.2	-0.8	-0.3	1.4	1.1
	Euro-zone	-0.7	0.1	-0.5	0.6	1.1	-0.2	1.4	0.5	-1.4	-0.6	1.4	0.9
Energy	EU-25	-0.7	1.6	-0.3	0.7	-1.2	0.9	-0.7	3.0	-0.2	1.3	0.6	0.1
	EU-15	-0.8	1.6	-0.1	0.4	-1.2	0.9	-0.5	2.9	-0.3	1.2	0.6	0.0
	Euro-zone	-0.7	2.9	-0.8	0.9	-0.3	1.8	-0.4	4.5	2.1	2.3	2.7	1.7
Intermediate goods	EU-25	-0.7	0.2	-0.1	0.6	1.1	0.2	2.4	1.1	-0.2	-0.2	1.8	1.8
	EU-15	-0.8	0.2	-0.3	0.5	1.0	-0.1	2.2	0.9	-0.5	-0.6	1.4	1.1
	Euro-zone	-0.7	0.2	-0.4	0.5	1.3	-0.2	2.8	1.1	-0.7	-0.6	1.7	1.2
Capital goods	EU-25	-0.7	0.4	0.1	0.4	1.7	-0.5	0.8	0.9	-0.2	0.1	2.9	1.6
	EU-15	-0.8	0.3	-0.1	0.2	1.6	-0.8	0.6	0.6	-0.7	-0.4	2.3	0.9
	Euro-zone	-1.0	0.3	-0.8	0.4	1.7	-1.0	1.2	0.9	-1.8	-1.1	2.0	0.1
Consumer durables	EU-25	-1.3	-1.1	-0.5	1.8	0.7	0.1	-3.1	-4.3	-4.0	-1.0	1.1	2.3
	EU-15	-1.5	-1.8	-0.7	1.4	0.2	-0.2	-3.6	-5.6	-5.2	-2.5	-0.8	0.8
	Euro-zone	-1.8	-1.8	-1.3	1.4	0.3	0.1	-4.3	-5.8	-6.1	-3.3	-1.3	0.7
Consumer non-durables	EU-25	0.1	-0.2	0.2	0.6	0.2	0.2	0.9	-0.4	-0.3	0.7	0.8	1.1
	EU-15	0.0	-0.2	0.0	0.6	0.1	0.1	0.7	-0.6	-0.7	0.5	0.5	0.7
	Euro-zone	0.3	-0.4	-0.1	0.7	-0.1	0.2	1.4	-0.3	-0.9	0.6	0.1	0.8

Table 2: Production index for the MIGs, growth rates (%)

	Quarter on quarter growth rates, seasonally adjusted data						Year on year growth rates, working day adjusted data					
	Q4-02	Q1-03	Q2-03	Q3-03	Q4-03	Q1-04	Q4-02	Q1-03	Q2-03	Q3-03	Q4-03	Q1-04
EU-25	-0.3	0.3	-0.1	0.6	0.8	0.1	1.0	0.8	-0.3	0.4	1.7	1.4
EU-15	-0.2	0.2	-0.2	0.3	0.6	0.0	0.8	0.6	-0.6	0.0	1.2	0.7
Euro-zone	-0.5	0.3	-0.5	0.6	0.8	-0.1	1.3	0.9	-0.8	-0.1	1.4	0.8
BE	0.8	-1.0	-0.3	2.4	-0.5	0.5	3.7	-0.1	-1.2	2.5	-1.0	1.9
CZ	2.7	1.5	1.1	1.4	2.1	2.1	4.9	6.3	5.0	5.9	6.3	7.4
DK	-0.7	1.3	0.2	0.4	-1.8	1.8	1.0	1.6	-1.2	1.1	-0.4	0.5
DE	-0.8	0.7	-1.1	0.0	2.1	0.3	1.7	1.5	-0.2	-1.0	1.5	1.2
EE	1.2	1.3	3.3	3.9	0.6	-0.7	9.3	12.7	9.2	10.1	9.5	7.2
EL	1.6	-1.7	2.8	-0.7	0.2	0.0	3.1	0.7	2.1	2.2	0.8	2.3
ES	0.5	0.1	0.1	0.3	0.6	0.5	2.6	1.6	1.7	1.0	1.1	1.6
FR	-1.0	0.9	-1.1	0.7	0.7	0.3	-0.9	0.1	-1.7	-0.5	1.6	0.5
IE	-1.6	4.5	0.1	3.2	7.0	-5.7	6.5	2.1	2.2	5.5	15.2	4.5
IT	-0.6	-0.2	-1.0	1.5	-0.1	-0.5	0.6	-0.1	-1.8	-0.1	0.3	-0.1
CY	0.7	6.1	-1.5	0.4	2.2	:	-1.0	10.8	4.6	5.5	7.3	:
LV	2.7	-0.2	2.2	2.8	1.6	3.2	9.7	7.4	6.0	7.8	6.5	10.1
LT	5.5	10.5	-7.4	11.2	4.8	1.5	1.7	20.5	4.3	20.0	19.2	9.6
LU	0.8	2.6	-1.6	2.5	-0.4	:	1.6	4.5	-1.2	4.7	2.8	:
HU	1.8	-0.2	1.9	3.5	3.9	1.9	4.9	3.3	4.4	7.1	9.3	11.5
MT	:	:	:	:	:	:	:	:	:	:	:	:
NL	-0.8	0.6	-3.7	0.8	1.7	1.2	0.1	0.4	-4.8	-3.6	-0.9	0.0
AT	0.2	1.4	-0.3	0.7	-0.2	:	1.5	3.6	0.6	1.9	1.4	:
PL	1.2	0.2	3.8	3.6	2.9	6.4	4.6	4.4	8.5	9.0	10.9	18.0
PT	-0.3	-0.1	0.1	1.0	0.3	-4.1	-2.4	0.5	-2.8	1.1	1.0	-3.0
SI	-1.6	-1.5	-0.5	1.0	1.9	-1.0	1.5	-2.8	-3.1	-2.6	1.1	1.4
SK	0.6	0.5	0.9	0.7	2.2	2.1	10.0	10.8	4.9	2.5	4.3	6.1
FI	0.1	-0.9	0.1	2.2	-1.1	-2.1	5.2	2.0	-1.5	1.8	0.4	-1.5
SE	1.4	-0.9	1.8	0.3	0.9	1.7	-0.9	-0.5	2.4	3.5	3.0	5.0
UK	-0.6	-0.1	0.3	0.0	-0.1	-0.6	-1.2	-1.0	-0.3	-0.3	0.2	-0.5
BG	0.3	5.8	3.4	3.1	4.3	4.8	6.3	18.3	11.9	12.8	17.2	16.9
RO	1.2	-2.0	2.7	0.4	0.0	2.3	6.6	3.6	5.6	2.6	0.9	5.4
TR	:	:	:	:	:	:	:	:	:	:	:	:

Table 3: Production index for total industry (excluding construction), growth rates (%)

Production index for the main industrial groupings (MIGs)

	Quarter on quarter growth rates, seasonally adjusted data						Year on year growth rates, working day adjusted data					
	Q4-02	Q1-03	Q2-03	Q3-03	Q4-03	Q1-04	Q4-02	Q1-03	Q2-03	Q3-03	Q4-03	Q1-04
EU-25	-0.5	0.1	-0.1	0.6	1.1	0.0	1.2	0.5	-0.4	0.1	1.9	1.7
EU-15	-0.6	0.1	-0.2	0.5	1.0	-0.2	0.9	0.2	-0.8	-0.3	1.4	1.1
Euro-zone	-0.7	0.1	-0.5	0.6	1.1	-0.2	1.4	0.5	-1.4	-0.6	1.4	0.9
BE	-0.1	-1.0	0.1	2.2	1.0	0.3	4.1	-0.3	-2.0	1.6	2.7	4.1
CZ	2.9	1.3	1.3	1.6	2.0	2.3	6.3	5.3	4.8	6.2	6.2	7.7
DK	-0.5	-0.3	-0.4	1.0	-1.3	2.1	2.4	0.8	-2.1	-0.3	-1.1	1.4
DE	-0.7	0.2	-0.8	0.1	1.7	0.2	1.7	1.1	-0.7	-1.2	1.6	1.3
EE	1.6	2.0	2.5	3.3	3.6	-0.4	9.7	10.5	8.4	9.8	11.9	9.1
EL	0.5	-1.8	2.1	-2.0	2.4	-2.4	3.7	-1.7	0.3	-0.9	0.8	0.1
ES	-0.2	0.3	-1.2	0.6	1.7	0.0	4.3	4.3	-0.5	0.0	1.4	1.2
FR	-1.3	0.7	-0.8	0.6	0.5	-0.1	-0.6	-0.7	-1.9	-0.6	1.1	0.2
IE	-2.9	3.9	1.5	0.9	5.6	:	4.2	0.3	0.2	3.1	12.9	:
IT	-0.1	-1.0	-0.9	1.3	-0.1	-0.7	0.9	-0.9	-2.3	-0.8	-0.5	0.1
CY	1.0	6.6	-3.0	0.6	4.0	:	-1.4	12.1	3.7	5.1	8.2	:
LV	1.5	1.0	1.8	2.9	1.4	3.9	10.2	8.2	7.4	7.5	7.2	10.4
LT	0.0	13.5	-0.4	3.0	4.0	3.1	2.5	17.3	14.7	16.5	21.1	10.2
LU	1.4	1.8	-1.2	2.0	-1.0	:	1.0	3.3	-2.5	3.7	1.8	:
HU	1.3	1.1	1.9	3.8	5.6	0.9	6.1	4.0	5.1	8.2	12.9	12.4
MT	:	:	:	:	:	:	:	:	:	:	:	:
NL	-1.5	0.0	-1.4	-0.2	0.2	0.2	-1.1	-1.8	-3.1	-3.2	-1.3	-0.9
AT	0.2	1.5	-0.1	1.0	0.1	:	1.7	3.3	0.3	2.6	2.5	:
PL	1.1	0.2	4.3	3.7	4.0	6.9	6.2	4.7	9.4	9.5	12.5	20.5
PT	-0.1	-1.2	0.2	1.6	-0.2	-2.8	-1.7	-0.9	-3.6	0.9	-0.1	-1.4
SI	-1.5	4.1	-1.0	1.0	3.8	-1.9	-3.4	3.5	3.2	2.5	8.2	1.8
SK	1.8	1.3	0.3	2.0	4.8	1.9	13.1	13.1	8.2	5.5	8.8	9.3
FI	0.3	-0.5	-0.4	0.9	0.1	-0.6	4.1	0.9	-1.9	0.9	0.7	-0.4
SE	0.5	0.6	1.6	1.2	0.3	1.4	0.2	0.4	3.5	4.2	3.3	4.7
UK	-0.7	0.0	1.0	-0.1	0.8	-1.0	-1.6	-1.0	1.1	0.2	1.7	0.9
BG	:	:	:	:	:	:	:	:	:	:	:	:
RO	2.7	-3.3	3.0	1.1	0.8	1.5	9.8	5.4	7.6	3.5	1.6	6.6
TR	:	:	:	:	:	:	:	:	:	:	:	:

Table 4: Production index for total industry (excluding energy & construction), growth rates (%)

	Quarter on quarter growth rates, seasonally adjusted data						Year on year growth rates, working day adjusted data					
	Q4-02	Q1-03	Q2-03	Q3-03	Q4-03	Q1-04	Q4-02	Q1-03	Q2-03	Q3-03	Q4-03	Q1-04
EU-25	-0.7	1.6	-0.3	0.7	-1.2	0.9	-0.7	3.0	-0.2	1.3	0.6	0.1
EU-15	-0.8	1.6	-0.1	0.4	-1.2	0.9	-0.5	2.9	-0.3	1.2	0.6	0.0
Euro-zone	-0.7	2.9	-0.8	0.9	-0.3	1.8	-0.4	4.5	2.1	2.3	2.7	1.7
BE	-2.2	-3.4	10.7	-1.5	-9.7	5.8	0.9	0.2	11.9	3.2	-5.7	5.1
CZ	-1.7	3.8	-0.1	3.2	-0.9	-1.3	0.7	6.3	5.3	5.5	6.1	0.6
DK	-3.0	5.3	4.8	1.3	-8.0	-0.5	-4.0	5.7	3.0	8.5	3.1	-3.2
DE	-0.1	2.6	0.9	-2.6	0.0	3.4	0.0	4.7	3.6	0.7	0.7	1.6
EE	6.7	0.5	-0.6	2.9	-6.4	3.5	9.7	20.9	10.6	12.3	-3.8	-0.8
EL	3.0	-1.8	7.8	0.1	-3.7	2.8	2.4	4.3	5.9	8.7	1.9	7.0
ES	0.5	3.2	0.0	2.9	-0.7	2.6	-3.3	0.5	2.1	6.7	5.4	6.0
FR	-0.3	3.5	-2.1	1.1	2.4	1.7	-3.1	5.0	0.7	2.3	4.6	3.1
IE	2.8	2.5	-6.6	8.3	2.4	:	5.5	-0.1	3.8	6.4	6.2	:
IT	-2.6	5.0	0.0	1.8	-0.7	0.0	-0.8	3.9	3.0	4.1	6.1	1.2
CY	1.3	1.4	5.6	0.1	-3.0	:	0.9	7.2	8.7	8.6	4.1	:
LV	2.8	-1.5	-0.3	1.7	1.7	5.2	11.9	7.5	3.6	4.6	-2.7	9.9
LT	19.7	6.0	-21.6	33.5	8.9	-1.4	-0.8	25.0	-15.3	32.9	20.2	12.4
LU	3.8	8.3	0.3	3.1	1.6	:	10.4	21.4	17.3	15.9	13.9	:
HU	-0.5	3.2	-4.1	0.4	-2.0	4.0	-1.7	6.0	-1.0	-1.1	-3.5	-1.5
MT	:	:	:	:	:	:	:	:	:	:	:	:
NL	-4.1	2.3	-9.4	5.4	5.3	-0.5	4.1	6.7	-9.7	-8.0	1.4	0.6
AT	-1.1	2.7	-0.6	-3.3	-3.3	:	0.7	5.6	2.6	-2.4	-4.9	:
PL	0.3	1.3	-1.4	0.6	0.1	1.3	-4.8	0.7	0.2	0.7	0.3	1.0
PT	-1.5	7.1	-0.5	-2.4	2.8	-17.0	-6.1	8.4	2.1	2.1	7.1	-17.1
SI	-0.3	3.4	-0.9	-0.2	-1.8	0.8	-9.1	3.5	0.3	2.8	-0.9	-1.8
SK	1.8	-2.5	-5.8	-1.1	-0.4	3.4	2.1	4.7	-7.0	-8.6	-8.9	-3.6
FI	7.5	1.2	-3.3	7.3	-7.0	2.7	16.2	14.7	8.6	13.3	-2.6	-0.8
SE	-0.8	-2.2	0.6	-2.5	2.6	6.5	-11.5	-8.7	-11.2	-6.5	-1.9	6.2
UK	1.3	-0.8	-1.2	-1.5	-1.2	-0.5	0.6	-0.4	-5.4	-2.0	-4.6	-4.6
BG	-4.0	5.0	-0.4	5.3	-5.9	2.5	-8.5	8.6	-0.9	5.8	3.3	1.2
RO	-3.5	-1.8	3.4	0.2	-3.7	0.8	-5.7	-3.0	-3.1	-1.8	-2.0	0.6
TR	:	:	:	:	:	:	:	:	:	:	:	:

Table 5: Production index for energy, growth rates (%)

Production index for the main industrial groupings (MIGs) (continued)

	Quarter on quarter growth rates, seasonally adjusted data						Year on year growth rates, working day adjusted data					
	Q4-02	Q1-03	Q2-03	Q3-03	Q4-03	Q1-04	Q4-02	Q1-03	Q2-03	Q3-03	Q4-03	Q1-04
EU-25	-0.7	0.2	-0.1	0.6	1.1	0.2	2.4	1.1	-0.2	-0.2	1.8	1.8
EU-15	-0.8	0.2	-0.3	0.5	1.0	-0.1	2.2	0.9	-0.5	-0.6	1.4	1.1
Euro-zone	-0.7	0.2	-0.4	0.5	1.3	-0.2	2.8	1.1	-0.7	-0.6	1.7	1.2
BE	3.1	-1.5	-8.1	13.6	-1.0	-5.1	14.9	5.1	-4.1	6.4	1.9	-2.0
CZ	2.9	-0.6	1.2	3.0	3.3	6.1	7.4	5.9	5.6	6.4	6.5	14.6
DK	-0.5	5.9	-2.4	-0.7	0.8	2.0	1.8	8.4	-0.4	2.5	3.2	0.3
DE	-1.1	0.4	-0.4	-0.1	2.3	1.0	2.9	1.6	0.4	-1.3	1.9	2.5
EE	-1.6	8.4	2.1	4.6	2.4	2.9	6.5	13.9	13.3	13.9	18.5	12.5
EL	-1.2	-14.4	6.4	-7.2	5.6	14.7	2.0	-12.1	-9.0	-15.8	-10.5	19.7
ES	0.8	0.8	-0.8	-0.4	1.4	0.8	5.1	3.6	2.2	0.8	0.9	1.5
FR	-1.4	-0.3	-1.6	0.1	1.0	0.1	-0.2	-1.0	-3.5	-3.3	-0.7	-0.5
IE	-5.6	6.1	1.4	5.1	9.3	:	5.0	-0.7	1.3	5.7	23.1	:
IT	-1.0	0.2	-1.5	0.6	-0.7	-1.0	0.6	0.7	-1.6	-1.7	-1.2	-2.5
CY	2.6	-5.1	0.4	-1.1	1.7	:	9.5	4.1	-0.2	-3.5	-4.2	:
LV	1.3	-0.1	1.6	2.8	4.6	4.6	11.4	8.2	6.4	5.6	9.1	14.3
LT	3.7	12.6	-0.8	7.1	3.3	1.4	10.2	24.2	21.9	24.1	23.7	11.3
LU	1.5	0.1	1.0	3.1	-1.7	:	1.3	2.1	-2.0	5.4	2.6	:
HU	-1.0	-6.3	1.7	2.0	2.3	5.0	2.8	-7.9	-3.4	-3.7	-0.6	11.2
MT	:	:	:	:	:	:	:	:	:	:	:	:
NL	-1.1	-0.6	0.4	-0.4	1.2	0.7	0.3	0.0	-1.8	-2.0	0.4	1.9
AT	-0.3	2.3	0.7	0.5	1.0	:	3.0	4.1	1.8	3.1	4.3	:
PL	0.2	0.4	6.2	2.6	4.1	7.9	7.6	7.1	10.2	9.8	13.5	22.9
PT	-0.6	2.3	1.4	1.5	0.1	-1.6	-0.9	1.0	-0.9	5.5	5.0	1.5
SI	-3.9	1.2	1.1	0.3	3.4	-1.3	0.0	0.4	2.2	-1.6	6.2	3.4
SK	1.9	-0.1	-0.4	2.4	4.3	1.4	12.6	13.6	4.1	3.7	6.9	7.8
FI	-0.1	-1.3	2.1	0.7	0.5	-1.4	7.8	2.7	2.3	1.6	2.0	1.5
SE	-1.1	0.3	0.0	0.9	-0.7	1.6	-1.7	0.9	0.8	0.8	0.6	1.9
UK	-0.5	-0.6	-0.2	0.4	-0.2	0.1	-0.3	-1.0	0.4	-0.8	-0.3	0.2
BG	2.2	6.7	2.8	1.3	10.1	12.2	21.6	28.7	19.9	13.5	22.3	28.2
RO	0.8	-4.7	3.9	0.9	0.5	7.3	16.2	8.7	5.8	0.8	0.3	13.3
TR	:	:	:	:	:	:	:	:	:	:	:	:

Table 6: Production index for intermediate goods, growth rates (%)

	Quarter on quarter growth rates, seasonally adjusted data						Year on year growth rates, working day adjusted data					
	Q4-02	Q1-03	Q2-03	Q3-03	Q4-03	Q1-04	Q4-02	Q1-03	Q2-03	Q3-03	Q4-03	Q1-04
EU-25	-0.7	0.4	0.1	0.4	1.7	-0.5	0.8	0.9	-0.2	0.1	2.9	1.6
EU-15	-0.8	0.3	-0.1	0.2	1.6	-0.8	0.6	0.6	-0.7	-0.4	2.3	0.9
Euro-zone	-1.0	0.3	-0.8	0.4	1.7	-1.0	1.2	0.9	-1.8	-1.1	2.0	0.1
BE	-6.5	3.2	2.9	-9.5	2.9	4.5	-6.8	-4.7	-4.9	-11.2	-1.2	0.2
CZ	1.2	2.4	1.5	1.4	0.5	0.0	7.8	11.0	6.1	6.9	6.8	4.9
DK	1.1	-2.3	-0.1	-1.3	-2.1	7.7	6.3	0.1	0.2	-2.8	-6.4	4.0
DE	-0.7	1.4	-2.6	0.6	3.4	-1.0	2.1	2.9	-1.2	-1.1	2.7	0.5
EE	3.0	-4.4	8.4	1.2	12.3	-9.1	18.9	12.1	11.7	8.1	17.7	10.9
EL	6.0	-13.7	13.5	-1.2	-1.7	-6.0	0.2	-7.2	3.1	2.2	-4.6	1.9
ES	-1.8	-0.8	0.1	0.1	2.6	-1.3	5.0	0.3	0.4	-2.3	3.2	1.3
FR	-1.8	2.0	-0.4	0.9	1.2	-1.0	-1.7	0.0	-1.4	0.8	4.7	-0.2
IE	0.8	1.2	5.6	2.6	4.6	:	9.2	6.4	14.1	10.3	14.5	:
IT	-0.2	-1.9	-1.2	1.5	0.2	-1.8	2.2	-1.8	-3.4	-1.7	-0.6	-1.1
CY	14.2	-24.5	-5.5	1.9	-3.7	:	21.0	0.8	-17.9	-18.8	-30.2	:
LV	7.8	6.9	5.1	3.5	0.4	-6.2	19.6	15.0	23.2	27.5	18.1	1.2
LT	2.9	8.3	2.4	9.7	3.6	4.8	2.3	17.1	17.3	25.3	25.6	22.1
LU	-1.1	2.9	-7.3	-7.3	9.6	:	-3.8	5.4	-6.3	-13.1	-3.7	:
HU	0.9	2.3	2.2	3.8	5.9	-1.8	12.0	10.0	6.7	9.4	14.9	9.7
MT	:	:	:	:	:	:	:	:	:	:	:	:
NL	1.2	-2.3	-0.5	-2.9	1.4	-1.0	-1.5	-2.4	-3.9	-4.3	-4.1	-2.9
AT	2.3	0.9	-1.8	1.7	1.1	:	2.0	4.9	-2.3	3.4	1.7	:
PL	1.1	3.1	8.8	7.2	9.0	19.1	0.0	5.4	16.6	21.4	31.2	48.4
PT	1.3	-5.8	-2.6	-0.3	0.2	-0.4	-4.8	-5.8	-11.3	-7.7	-8.0	-2.8
SI	1.1	10.2	-1.7	6.8	-1.7	-2.0	-7.1	11.9	8.6	18.5	13.0	0.9
SK	2.6	3.0	7.1	5.7	7.9	-2.2	16.4	10.4	14.8	20.1	26.7	20.0
FI	-0.4	-1.3	-2.1	0.9	-1.9	-1.6	3.8	0.5	-6.2	-2.4	-4.0	-5.0
SE	4.5	-3.2	4.1	0.9	2.5	2.3	2.0	-1.2	3.5	7.5	4.7	10.8
UK	-1.2	1.1	2.4	-0.2	0.5	-1.3	-3.9	-0.4	4.7	1.9	4.2	1.7
BG	-4.3	11.3	-5.0	-3.1	17.8	6.3	16.1	27.2	10.8	-1.0	23.2	16.7
RO	2.2	0.0	3.5	-1.8	-0.7	2.8	6.1	4.7	4.4	3.8	1.0	3.9
TR	:	:	:	:	:	:	:	:	:	:	:	:

Table 7: Production index for capital goods, growth rates (%)

Production index for the main industrial groupings (MIGs) (continued)

	Quarter on quarter growth rates, seasonally adjusted data						Year on year growth rates, working day adjusted data					
	Q4-02	Q1-03	Q2-03	Q3-03	Q4-03	Q1-04	Q4-02	Q1-03	Q2-03	Q3-03	Q4-03	Q1-04
EU-25	-1.3	-1.1	-0.5	1.8	0.7	0.1	-3.1	-4.3	-4.0	-1.0	1.1	2.3
EU-15	-1.5	-1.8	-0.7	1.4	0.2	-0.2	-3.6	-5.6	-5.2	-2.5	-0.8	0.8
Euro-zone	-1.8	-1.8	-1.3	1.4	0.3	0.1	-4.3	-5.8	-6.1	-3.3	-1.3	0.7
BE	-3.5	-1.0	-4.1	0.6	-2.5	-3.7	-6.3	-6.7	-12.1	-8.1	-5.7	-9.6
CZ	-5.6	0.9	2.0	2.8	3.5	14.7	-18.6	-7.0	-3.4	-0.3	7.5	26.5
DK	-4.1	-2.2	0.9	1.6	-2.5	2.2	-4.1	-8.6	-5.8	-3.5	-3.3	2.2
DE	-2.2	-2.6	-3.0	3.3	0.2	-2.5	-5.7	-7.0	-7.2	-4.5	-2.2	-2.2
EE	1.5	1.2	-2.3	-6.3	1.5	8.2	8.4	8.8	5.2	-6.5	-5.6	0.6
EL	-4.8	4.4	-4.6	6.6	-2.9	0.2	-16.2	-4.1	-5.4	1.9	2.9	1.3
ES	-1.5	1.2	1.5	-2.1	-2.1	1.3	-5.0	-1.9	0.8	-1.7	-2.2	-1.5
FR	-3.0	-1.7	0.2	-1.2	-3.5	1.2	-2.5	-3.8	-5.1	-4.9	-5.5	-1.0
IE	-3.1	4.9	1.4	-5.1	9.4	:	-10.5	-4.9	4.1	-2.0	10.8	:
IT	-0.4	-5.2	-0.6	4.5	1.5	2.6	-0.8	-6.6	-7.7	-2.0	0.3	8.5
CY	1.1	4.8	-2.8	8.6	-2.0	:	-3.5	14.1	-4.1	9.4	8.3	:
LV	0.4	3.9	0.7	-3.9	-1.0	2.1	6.0	10.0	11.7	1.0	-0.7	-2.0
LT	2.5	2.6	6.2	5.5	6.0	15.7	24.5	19.7	19.4	17.8	21.2	38.6
LU	c	c	c	c	c	:	c	c	c	c	c	:
HU	9.3	22.4	7.7	10.9	15.9	-0.8	19.3	42.0	49.4	58.8	68.8	37.6
MT	:	:	:	:	:	:	:	:	:	:	:	:
NL	-6.0	0.8	-4.0	-1.1	0.0	0.7	-5.3	-5.2	-9.4	-10.3	-5.0	-4.3
AT	-3.8	0.8	2.4	-3.0	-1.4	:	-10.7	-7.5	-0.6	-4.4	-1.8	:
PL	3.8	8.3	6.3	11.4	5.0	6.2	13.3	22.3	22.8	31.9	35.4	31.9
PT	-1.1	-10.3	11.1	2.6	-3.4	-7.4	-1.2	1.9	0.4	1.6	-1.2	1.9
SI	1.2	15.7	-9.9	6.5	-0.3	-14.4	-11.9	11.9	-1.8	12.0	11.4	-17.3
SK	-5.9	3.4	-7.6	-2.8	4.0	21.7	19.5	52.0	26.8	-10.7	-5.8	15.1
FI	-9.9	-1.7	8.2	56.3	2.4	-30.2	-11.5	-13.8	-8.3	58.5	70.6	21.4
SE	-2.2	2.7	0.7	2.0	-3.4	-0.5	-6.6	-0.3	0.8	4.6	1.8	-1.4
UK	1.1	-3.5	1.6	2.2	0.2	-1.7	0.5	-5.1	-1.6	0.4	1.6	1.3
BG	5.0	20.8	7.1	8.7	10.2	12.2	36.1	64.1	52.6	48.0	55.2	43.8
RO	0.0	1.7	1.0	2.1	4.8	-5.3	21.8	23.8	9.6	4.6	10.0	2.2
TR	:	:	:	:	:	:	:	:	:	:	:	:

Table 8: Production index for consumer durables, growth rates (%)

	Quarter on quarter growth rates, seasonally adjusted data						Year on year growth rates, working day adjusted data					
	Q4-02	Q1-03	Q2-03	Q3-03	Q4-03	Q1-04	Q4-02	Q1-03	Q2-03	Q3-03	Q4-03	Q1-04
EU-25	0.1	-0.2	0.2	0.6	0.2	0.2	0.9	-0.4	-0.3	0.7	0.8	1.1
EU-15	0.0	-0.2	0.0	0.6	0.1	0.1	0.7	-0.6	-0.7	0.5	0.5	0.7
Euro-zone	0.3	-0.4	-0.1	0.7	-0.1	0.2	1.4	-0.3	-0.9	0.6	0.1	0.8
BE	-0.9	-0.1	1.7	4.5	6.0	-5.8	1.8	-0.3	0.3	5.6	12.5	6.8
CZ	1.2	0.8	1.5	1.0	0.4	-0.4	3.4	1.6	3.0	5.0	4.7	2.4
DK	-0.4	-1.7	-0.4	1.9	0.4	-1.7	0.5	-3.5	-4.7	-0.6	0.1	0.1
DE	-0.3	-0.6	0.3	-0.4	0.4	0.2	0.8	-1.6	-0.4	-0.8	-0.4	0.6
EE	2.2	-0.2	2.4	4.0	-0.1	-0.8	4.7	6.7	3.0	8.7	5.8	5.6
EL	3.0	-4.1	3.2	-4.7	3.8	-1.2	9.0	-0.6	2.4	-2.8	-1.8	1.0
ES	0.0	-0.7	0.6	0.1	-1.2	0.6	3.1	1.0	1.9	0.6	-1.7	0.2
FR	0.2	0.1	-0.6	1.3	-0.9	1.3	0.8	-0.6	-0.2	1.4	-0.1	1.1
IE	3.8	-0.9	-4.8	1.8	0.8	:	9.5	7.8	-8.2	-0.3	-3.1	:
IT	0.3	-0.1	0.2	1.4	-0.7	0.9	0.3	-0.7	-0.9	2.0	0.7	1.7
CY	-4.0	24.9	-5.0	1.0	7.1	:	-12.7	18.7	11.4	15.0	28.1	:
LV	0.3	-1.1	2.8	1.2	0.6	1.5	5.3	1.7	3.1	3.6	3.3	6.0
LT	-4.9	14.8	-2.1	-2.7	1.2	-2.8	-6.4	12.7	6.6	3.9	10.6	-6.2
LU	2.8	3.8	-2.7	5.0	-3.3	:	4.3	5.8	-1.5	9.0	2.7	:
HU	0.1	0.0	-0.3	3.7	-2.5	-0.3	-1.1	-2.2	-2.1	3.5	0.9	0.5
MT	:	:	:	:	:	:	:	:	:	:	:	:
NL	-1.4	0.6	-1.8	0.4	0.0	-0.7	-1.1	-2.2	-3.4	-2.2	-0.9	-2.1
AT	0.0	1.5	-0.6	1.2	-1.5	:	2.4	2.7	0.8	2.1	1.1	:
PL	2.2	0.1	1.9	1.8	2.1	3.1	6.0	2.8	10.9	5.9	6.0	10.5
PT	0.1	-2.5	-2.2	2.4	-0.4	-1.8	-1.7	-1.8	-4.4	-1.9	-3.1	-2.2
SI	-2.1	0.0	1.1	-1.8	5.9	1.6	-2.5	-0.9	1.2	-3.3	5.4	7.0
SK	-0.4	-1.0	0.9	-4.3	-3.8	2.8	5.4	5.0	4.1	-4.8	-8.3	-4.6
FI	-0.2	0.1	-0.6	1.0	0.3	-3.3	-1.1	-1.9	-2.9	0.1	0.9	-2.7
SE	0.1	2.8	1.7	-1.3	0.7	-0.8	0.8	0.4	6.8	3.7	3.8	0.2
UK	-1.9	0.5	0.2	0.6	0.4	-0.5	-1.5	-1.3	-0.7	-0.2	1.5	0.7
BG	4.2	6.5	5.9	6.3	4.5	4.8	9.0	16.5	17.6	25.4	25.3	23.1
RO	0.5	-0.5	4.2	0.3	-1.9	-1.1	4.2	0.2	10.5	5.8	1.9	0.5
TR	:	:	:	:	:	:	:	:	:	:	:	:

Table 9: Production index for consumer non-durables, growth rates (%)

Production index for industrial NACE Divisions in the EU

EU-25 NACE Rev. 1 heading (code)		Weight in total industry (%)	Quarter on quarter growth rates, seasonally adjusted data						Year on year growth rates, working day adjusted data					
			Q4-02	Q1-03	Q2-03	Q3-03	Q4-03	Q1-04	Q4-02	Q1-03	Q2-03	Q3-03	Q4-03	Q1-04
Total industry	C-E	100.0	-0.3	0.3	-0.1	0.6	0.8	0.1	1.0	0.8	-0.3	0.4	1.7	1.4
Mining of coal and lignite	10	0.6	-2.2	-0.1	-1.4	-2.2	4.9	-1.9	-3.5	-2.4	-4.6	-5.8	1.1	-0.8
Extr. petroleum / natural gas	11	2.7	1.5	-1.1	-4.1	0.5	-2.0	-2.1	1.9	1.7	-8.5	-3.2	-6.5	-7.3
Mining of metal ores	13	0.1	7.3	-5.4	-3.8	2.8	0.7	1.1	13.7	0.3	0.7	0.8	-6.7	1.4
Other non-metallic mining	14	0.7	0.5	0.7	0.6	-2.4	1.6	0.5	2.5	-2.5	2.0	-0.6	0.5	0.0
Food and beverages	15	9.5	1.0	-0.5	0.2	0.8	-0.3	0.8	2.5	0.6	0.6	1.6	0.1	1.6
Tobacco	16	0.6	-0.5	-1.7	-1.2	-3.6	-0.4	-0.6	0.4	-4.5	-5.0	-7.2	-6.8	-5.4
Textiles	17	2.2	-1.8	-0.1	-2.2	-0.4	-0.3	-2.2	-1.6	-1.9	-4.8	-4.2	-3.0	-5.1
Clothing	18	1.5	-2.3	-1.9	-0.2	0.4	-1.9	-0.5	-11.2	-10.7	-6.7	-2.5	-4.0	-2.4
Leather products	19	0.7	-3.1	-1.3	-3.7	-1.6	-2.5	-2.6	-7.3	-7.3	-9.9	-8.9	-8.9	-9.9
Wood products	20	1.8	-0.4	-0.7	0.5	1.2	0.8	1.7	2.5	1.6	0.0	0.6	1.6	4.3
Pulp & paper	21	2.7	0.1	0.3	0.4	0.5	1.4	0.9	4.0	2.3	1.3	1.4	2.7	3.3
Publishing & printing	22	5.4	-0.4	-1.0	0.5	0.5	1.0	1.0	0.9	-1.0	-0.7	-0.5	0.9	3.3
Refined petroleum prod.	23	1.9	-0.9	2.4	-0.7	1.8	0.0	1.9	-3.3	0.8	0.3	2.6	3.5	2.9
Chemicals	24	9.2	-1.5	1.9	0.0	0.7	2.1	-1.0	3.9	2.3	0.5	0.9	5.3	2.0
Rubber & plastics	25	4.0	-0.3	0.2	0.3	1.4	1.1	1.0	2.3	1.4	0.3	1.7	3.1	3.8
Non-metallic minerals	26	4.0	-0.2	0.0	1.0	1.1	0.4	0.2	-1.2	-0.7	0.1	1.9	2.4	2.6
Basic metals	27	3.5	-0.8	0.0	-1.4	0.4	1.5	0.8	3.8	1.9	-1.1	-1.8	0.5	1.3
Metal products	28	7.9	-0.4	-0.5	-0.3	1.1	1.0	-0.3	1.6	0.2	-1.0	0.0	1.4	2.0
Machinery	29	9.3	0.2	-1.1	-0.8	0.7	1.1	0.3	1.3	-0.4	-2.4	-1.1	0.1	1.4
Office machinery	30	0.9	-2.9	3.8	0.2	1.0	0.3	-3.5	-13.3	-4.8	-2.2	3.1	7.0	-3.1
Electrical machinery	31	4.4	-1.3	-1.1	0.1	-0.4	1.4	0.3	0.3	-0.9	-1.4	-2.9	0.2	1.6
Radio/TV/communication	32	3.6	-1.4	1.7	-0.7	2.2	1.2	1.3	-3.8	0.5	-1.5	1.7	5.0	4.3
Medical and optical	33	2.7	-0.2	1.9	-0.3	0.3	1.4	-0.6	0.8	3.1	1.6	1.4	3.7	0.6
Motor vehicles	34	6.5	-0.8	0.7	0.1	0.2	2.9	0.1	5.4	4.3	1.9	0.2	4.4	3.4
Other transport	35	2.5	1.0	2.7	1.4	-0.4	2.7	-2.9	-2.1	1.5	4.3	4.6	7.3	0.2
Furniture & other manf.	36	2.9	-1.4	0.3	-0.3	0.4	-0.3	1.0	-5.5	-3.5	-3.4	-1.0	-0.1	0.9
Elec./gas/hot water	40	7.0	-1.1	2.6	0.2	1.1	-1.2	1.5	-1.0	4.2	2.3	2.7	2.5	1.5
Water	41	0.8	-0.7	0.6	1.4	4.4	1.7	-0.3	-0.7	0.5	1.4	4.4	1.7	-0.3

EURO-ZONE		Weight in total industry (%)	Quarter on quarter growth rates, seasonally adjusted data						Year on year growth rates, working day adjusted data					
			Q4-02	Q1-03	Q2-03	Q3-03	Q4-03	Q1-04	Q4-02	Q1-03	Q2-03	Q3-03	Q4-03	Q1-04
Total industry	C-E	100.0	-0.5	0.3	-0.5	0.6	0.8	-0.1	1.3	0.9	-0.8	-0.1	1.4	0.8
Mining of coal and lignite	10	0.5	-4.1	-2.6	3.2	-3.0	4.8	-0.5	-2.1	-2.5	-4.4	-6.6	2.2	4.7
Extr. petroleum / natural gas	11	0.9	-5.3	1.1	-8.6	6.3	3.8	-2.3	7.3	5.3	-8.4	-7.0	1.5	-1.4
Mining of metal ores	13	0.0	-3.9	-15.0	-4.7	0.8	3.5	-2.9	10.4	-12.1	-19.3	-21.8	-15.7	-2.8
Other non-metallic mining	14	0.6	0.2	3.8	-0.2	-3.7	3.6	1.3	-1.8	0.7	3.4	-0.1	3.5	0.4
Food and beverages	15	9.1	1.2	-0.9	0.4	0.9	-0.7	1.2	3.1	0.4	0.5	1.7	-0.4	1.8
Tobacco	16	0.4	-1.2	-1.9	-4.1	-4.8	-2.1	-2.2	0.5	-1.0	-5.6	-11.2	-11.7	-12.3
Textiles	17	2.4	-2.1	-0.8	-2.7	-0.8	-0.5	-2.6	-1.0	-1.9	-5.8	-5.7	-4.6	-6.4
Clothing	18	1.5	-2.3	-2.0	-0.4	0.4	-1.6	-0.4	-11.6	-10.9	-6.8	-2.9	-3.9	-2.2
Leather products	19	0.9	-2.7	-1.2	-3.2	-1.0	-2.4	-2.3	-7.0	-6.5	-9.3	-7.6	-7.6	-8.5
Wood products	20	1.8	-0.1	-0.6	0.0	1.0	0.9	1.9	1.9	1.8	-0.7	0.3	1.1	3.9
Pulp & paper	21	2.6	0.5	0.7	0.2	0.8	1.2	0.7	4.7	3.1	0.7	2.1	2.9	2.9
Publishing & printing	22	4.9	-0.8	-0.6	0.8	0.6	1.0	2.8	1.0	-1.0	-0.3	0.0	1.7	5.5
Refined petroleum prod.	23	1.9	-1.5	4.1	0.0	1.6	-0.2	1.7	-2.9	2.8	1.5	4.2	5.6	2.9
Chemicals	24	9.8	-1.7	2.2	-0.6	0.7	2.4	-1.6	4.8	2.4	-0.2	0.4	4.9	1.0
Rubber & plastics	25	4.1	0.0	-0.3	-0.1	1.5	1.1	1.1	3.5	1.4	-0.7	1.2	2.3	3.8
Non-metallic minerals	26	4.3	-0.1	-0.4	0.3	0.6	0.0	0.5	-1.3	-1.2	-1.2	0.5	0.4	1.3
Basic metals	27	3.7	-1.1	-0.2	-1.5	0.0	2.0	0.2	4.9	1.6	-2.0	-2.8	0.3	0.6
Metal products	28	8.4	-0.9	-0.4	-0.9	1.5	1.2	0.1	1.5	0.6	-1.7	-0.5	1.6	1.9
Machinery	29	10.0	0.3	-1.5	-1.7	0.6	1.0	0.1	1.6	-0.5	-3.7	-2.5	-1.4	0.2
Office machinery	30	0.9	-4.3	2.3	0.7	1.5	1.9	-1.8	-13.4	-6.8	-4.0	0.0	7.6	1.9
Electrical machinery	31	4.7	-2.0	-0.3	0.1	-0.6	1.3	-0.5	0.8	0.1	-1.1	-2.9	0.7	0.3
Radio/TV/communication	32	3.6	-0.3	1.2	-0.9	2.8	0.8	0.8	-1.4	1.1	-1.0	3.2	4.3	2.8
Medical and optical	33	2.8	-1.4	2.6	-1.3	0.2	2.1	-1.0	1.0	3.1	0.2	-0.1	4.1	-0.1
Motor vehicles	34	7.1	-1.8	1.1	-1.6	-0.5	3.1	-1.0	5.0	4.4	-0.7	-2.3	2.7	0.7
Other transport	35	2.1	-1.0	3.8	1.3	1.2	1.5	-5.8	-3.3	-0.8	2.8	5.7	8.3	-2.5
Furniture & other manf.	36	2.9	-2.0	0.2	-1.0	-0.2	0.3	1.5	-7.8	-5.0	-5.8	-3.1	-0.9	0.7
Elec./gas/hot water	40	7.0	-0.8	3.3	-0.2	0.9	-1.5	2.2	-0.8	5.0	3.0	3.3	2.5	1.4
Water	41	0.7	:	:	:	:	:	:	:	:	:	:	:	:

Table 10: Production index for selected NACE Divisions in the EU, growth rates (%)

Production index for industrial NACE Divisions in the EU (continued)

A more detailed study of the evolution of the production index shows that there was a mixed picture among some of the largest industrial activities in the EU. While the production of chemicals fell by 1.0 % between the final quarter of 2003 and the first quarter of 2004 in the EU-25, production of machinery rose by 0.3 % and that of food and beverages by 0.8 %. These were not the highest growth rates that were recorded: wood products, refined petroleum products, and electricity, gas and hot water supply all reported growth rates of 1.5 % or more.

On the downside, there were reductions in output of 2 % or more in several activities. Some of these were industries that are usually in decline (such as textiles or leather),

whereas there were also relatively large reductions in production recorded for the extraction of crude petroleum and natural gas (-2.1 %), the manufacture of other transport equipment (-2.9 %), and the manufacture of office machinery, which includes computers (-3.5 %).

On the basis of a comparison between the first quarter of 2003 and the first quarter of 2004, the production index for the EU-25 fell by 5 % or more for the manufacture of textiles (-5.1 %), tobacco processing (-5.4 %), the extraction of crude petroleum and natural gas (-7.3 %), and the manufacture of leather products (-9.9 %).

The three fastest growing activities in the EU-25 between the first quarters of 2003 and 2004 were the

manufacture of pulp and paper and the manufacture of radio / TV and communication equipment (both +4.3 %) and the processing of rubber and plastics (+3.8 %).

Looking at the same information for the euro-zone, the same three activities recorded the largest declines in output between the first quarters of 2003 and 2004, namely, the textiles (-6.4 %), leather products (-8.5 %) and tobacco processing industries (-12.3 %). On the other hand, the most rapid expansion in production was registered for publishing and printing (+5.5 %), followed by the mining of coal and lignite (+4.7 %) and the manufacture of wood products (+3.9 %) - none of these industries had appeared among the fastest growing activities within the EU-25.

Production index for three largest NACE Divisions within total industry (excluding construction)

	Quarter on quarter growth rates, seasonally adjusted data						Year on year growth rates, working day adjusted data					
	Q4-02	Q1-03	Q2-03	Q3-03	Q4-03	Q1-04	Q4-02	Q1-03	Q2-03	Q3-03	Q4-03	Q1-04
EU-25	1.0	-0.5	0.2	0.8	-0.3	0.8	2.5	0.6	0.6	1.6	0.1	1.6
EU-15	1.0	-0.5	0.0	0.8	-0.4	0.7	2.5	0.6	0.3	1.3	-0.1	1.2
Euro-zone	1.2	-0.9	0.4	0.9	-0.7	1.2	3.1	0.4	0.5	1.7	-0.4	1.8
BE	1.0	-1.5	0.7	3.0	-0.6	7.1	6.8	0.5	0.2	3.5	1.6	10.9
CZ	0.5	0.5	1.3	1.1	-0.5	0.5	2.8	0.8	3.7	3.9	2.2	1.8
DK	4.2	8.5	-7.1	-0.2	4.2	-2.9	10.5	16.1	0.6	5.7	4.8	-5.2
DE	-0.5	-1.2	2.1	-0.6	-0.6	0.3	1.5	-0.4	2.4	0.2	0.0	1.1
EE	0.2	-0.8	-0.9	5.6	-1.5	3.2	3.9	2.8	-2.2	3.3	2.2	7.2
EL	4.7	-5.5	1.3	-5.6	5.5	-1.7	7.8	-3.4	-0.3	-5.8	-4.3	-0.8
ES	2.1	-2.2	2.0	1.6	0.0	-0.1	7.3	4.9	0.9	3.8	1.4	3.2
FR	1.1	-0.7	-0.3	0.8	-2.3	2.1	4.4	-0.2	-0.5	2.0	-3.4	0.3
IE	1.1	2.7	1.2	3.7	2.0	:	-4.0	-3.4	-0.1	8.9	10.4	:
IT	2.9	-1.0	-0.6	1.5	0.7	-0.2	3.1	2.1	0.8	2.9	0.6	1.2
CY	:	:	:	:	:	:	:	:	:	:	:	:
LV	3.9	-2.2	5.5	1.5	-0.7	5.5	6.5	3.8	8.0	8.8	3.7	12.2
LT	1.9	10.9	-1.6	-0.7	3.1	0.6	-1.8	11.1	7.3	10.3	11.7	1.5
LU	5.8	-2.4	-3.6	4.8	-4.4	:	6.3	-2.2	-8.0	4.6	-5.7	:
HU	1.0	-1.6	1.5	2.1	-3.0	2.0	-0.9	-1.5	-1.4	2.7	-1.0	2.9
MT	:	:	:	:	:	:	:	:	:	:	:	:
NL	-2.2	0.8	-1.1	-0.5	0.1	c	0.0	-1.6	-2.3	-3.1	-0.9	c
AT	1.3	-2.1	1.0	0.9	-3.4	:	2.9	0.4	0.4	1.4	-4.1	:
PL	1.7	-0.4	2.8	1.2	1.5	3.7	3.9	0.9	8.3	5.2	5.1	10.7
PT	1.1	-2.8	-0.9	5.9	-1.7	0.7	-2.3	0.1	-4.1	3.1	-1.2	3.5
SI	1.4	-0.2	2.1	5.3	-3.8	1.8	-7.5	-2.7	2.1	8.6	3.1	5.2
SK	-1.9	0.4	1.1	-0.6	-6.0	4.1	0.3	1.2	3.4	-1.0	-4.6	-1.7
FI	1.3	-0.7	0.5	1.2	0.6	-3.1	1.7	-2.1	-0.7	2.3	1.8	-0.8
SE	-3.5	-1.7	1.5	-2.3	0.9	0.0	-5.6	-8.2	-0.8	-5.8	-0.9	0.1
UK	-1.2	0.8	-0.8	0.8	0.1	0.5	0.4	0.4	-0.6	-0.1	0.2	0.2
BG	2.7	5.6	10.1	3.2	7.2	5.7	3.2	7.0	23.8	21.8	28.2	28.8
RO	6.6	-3.8	5.1	1.5	-3.7	-3.6	12.6	-1.3	11.3	10.7	-0.8	-1.8
TR	:	:	:	:	:	:	:	:	:	:	:	:

Table 11: Production index for food products and beverages, growth rates (%)

**Production index for the three largest NACE Divisions within total industry
(excluding construction) (continued)**

	Quarter on quarter growth rates, seasonally adjusted data						Year on year growth rates, working day adjusted data					
	Q4-02	Q1-03	Q2-03	Q3-03	Q4-03	Q1-04	Q4-02	Q1-03	Q2-03	Q3-03	Q4-03	Q1-04
EU-25	0.2	-1.1	-0.8	0.7	1.1	0.3	1.3	-0.4	-2.4	-1.1	0.1	1.4
EU-15	0.1	-1.3	-0.9	0.5	1.1	0.2	1.1	-0.6	-2.7	-1.7	-0.5	1.0
Euro-zone	0.3	-1.5	-1.7	0.6	1.0	0.1	1.6	-0.5	-3.7	-2.5	-1.4	0.2
BE	-4.4	-0.4	-1.5	-0.8	1.6	0.8	2.7	1.8	-3.3	-7.1	-0.1	0.6
CZ	4.5	3.5	0.6	2.3	-2.7	-1.7	3.5	5.1	5.7	12.3	3.3	-2.6
DK	1.9	-3.7	-0.1	1.1	0.7	9.6	0.5	-5.6	-4.2	-1.7	-2.6	10.6
DE	-0.2	-0.3	-2.7	1.5	1.1	0.2	-0.3	-1.0	-3.8	-1.8	-0.5	0.2
EE	-10.1	-7.1	9.8	5.8	17.8	-10.0	15.1	-7.1	-8.5	-2.6	27.1	22.0
EL	4.6	-5.4	0.7	-5.1	-7.5	6.1	6.4	1.3	4.8	-5.0	-17.0	-4.8
ES	1.8	-3.0	0.0	0.4	4.0	1.8	-3.1	-0.9	-2.4	-1.7	1.5	6.5
FR	-0.5	-1.3	-1.5	-0.5	1.0	3.0	4.8	1.1	-3.3	-3.3	-1.1	-0.8
IE	1.1	0.6	0.8	-8.3	0.1	:	11.3	3.5	1.9	-6.4	-6.6	:
IT	1.6	-3.6	-2.0	0.4	-0.2	0.6	6.5	-0.1	-3.7	-4.3	-4.8	-0.9
CY	-7.6	16.8	3.4	0.4	3.9	:	-6.9	11.5	6.1	7.9	26.0	:
LV	2.3	3.0	9.1	0.5	14.1	-10.4	30.8	10.4	22.7	14.9	35.3	7.9
LT	5.5	-5.9	-2.2	1.9	3.1	14.5	25.9	11.5	6.7	0.0	-3.1	18.8
LU	-4.8	11.1	-11.0	-11.0	4.9	:	-8.7	15.4	-4.7	-17.9	-7.2	:
HU	4.4	-1.3	-3.7	5.0	5.3	2.7	35.8	3.8	-2.0	4.1	4.9	9.6
MT	:	:	:	:	:	:	:	:	:	:	:	:
NL	0.9	-4.6	0.3	0.1	0.4	c	-1.6	-4.0	-6.3	-4.3	-4.4	c
AT	2.2	1.1	0.1	2.1	-0.1	:	5.4	2.0	-4.9	5.7	3.2	:
PL	-0.7	2.9	5.8	10.5	4.8	4.5	5.5	6.2	8.3	19.5	26.2	28.1
PT	0.6	-3.1	-2.7	0.7	-2.3	1.8	0.7	-2.1	-5.3	-3.9	-7.0	-2.5
SI	-0.5	14.1	-8.3	4.6	3.3	-6.9	-15.9	10.5	0.0	8.6	13.3	-7.7
SK	6.5	0.9	0.9	2.5	3.1	8.4	14.8	18.2	11.5	10.0	5.3	17.7
FI	-2.3	0.4	-0.8	1.4	3.7	-6.0	-8.6	-4.2	-4.3	-1.2	5.4	-2.6
SE	2.9	3.9	0.6	1.6	-3.2	2.3	8.1	8.7	8.5	8.6	2.3	1.0
UK	-3.3	0.1	3.7	0.4	1.2	-1.7	-4.7	-3.1	1.2	0.7	6.3	4.5
BG	0.4	19.8	-15.3	2.1	4.5	16.4	15.5	37.5	3.2	3.9	9.3	7.9
RO	6.6	-5.1	-9.4	3.9	5.4	-4.4	5.5	-5.6	-14.7	-5.3	-4.8	-4.8
TR	:	:	:	:	:	:	:	:	:	:	:	:

Table 12: Production index for machinery and equipment, growth rates (%)

	Quarter on quarter growth rates, seasonally adjusted data						Year on year growth rates, working day adjusted data					
	Q4-02	Q1-03	Q2-03	Q3-03	Q4-03	Q1-04	Q4-02	Q1-03	Q2-03	Q3-03	Q4-03	Q1-04
EU-25	-1.6	2.0	0.0	0.7	2.1	-1.0	3.9	2.3	0.5	0.9	5.3	2.0
EU-15	-1.6	1.9	-0.2	0.6	2.2	-1.0	3.8	2.0	0.2	0.7	5.1	1.8
Euro-zone	-1.6	2.0	-0.5	0.7	2.1	-1.5	4.8	2.4	-0.2	0.4	4.9	1.0
BE	-4.6	4.9	-2.7	5.7	6.9	-5.4	9.1	2.3	-3.7	2.9	16.4	3.5
CZ	-0.9	3.8	1.3	1.1	2.0	4.4	-1.4	7.3	8.4	5.0	7.2	9.8
DK	-5.1	-0.3	-1.5	4.6	-0.5	-4.6	3.7	-1.9	-6.9	-1.8	2.2	-2.6
DE	-1.9	2.4	-1.0	-1.9	1.9	0.5	6.2	1.5	0.9	-2.2	1.2	-0.7
EE	-9.8	5.9	9.9	7.3	7.0	5.6	-9.9	-4.3	10.8	14.9	34.3	32.4
EL	4.2	-0.2	1.4	3.5	0.5	-0.2	7.7	8.1	5.8	10.5	5.5	4.9
ES	0.9	2.8	-2.1	1.8	-2.6	0.1	6.7	10.7	3.7	3.7	-0.5	-2.9
FR	-0.8	2.7	-1.5	1.0	1.3	0.2	-0.7	1.4	1.3	1.4	5.0	1.7
IE	-3.6	4.8	-2.6	4.4	11.9	:	8.6	1.3	-3.8	1.8	18.0	:
IT	-0.4	-1.5	-0.8	1.0	-1.0	2.9	4.1	0.1	-3.0	-1.8	-2.5	2.1
CY	-4.3	2.1	2.7	-0.7	2.7	:	-6.7	0.8	4.2	0.1	6.8	:
LV	-9.3	-12.4	-10.1	26.7	-5.1	11.0	11.4	-5.7	-25.4	-9.8	-5.0	20.0
LT	-2.4	-3.4	-3.9	4.7	-4.3	-10.9	25.2	10.2	13.3	-5.2	-7.1	-14.8
LU	2.3	2.7	-5.0	0.2	-2.9	:	-8.0	15.1	-12.9	-1.6	-4.3	:
HU	1.3	2.1	-0.2	6.7	1.0	1.5	5.2	6.3	2.7	10.0	10.0	8.7
MT	:	:	:	:	:	:	:	:	:	:	:	:
NL	2.5	0.8	0.5	-0.2	1.7	0.8	5.0	6.6	1.7	3.4	2.9	2.7
AT	-5.1	6.9	0.9	-2.5	5.2	:	2.5	3.7	1.8	-0.3	10.6	:
PL	0.9	2.7	4.1	1.1	2.1	2.6	13.2	13.2	16.9	9.0	9.9	10.1
PT	0.4	1.8	-1.5	3.0	1.1	-2.1	5.6	5.7	2.1	4.5	4.2	0.3
SI	-13.5	22.2	3.3	-10.8	22.4	-6.1	-13.6	20.7	27.0	-5.8	39.1	5.5
SK	1.2	0.1	-9.7	-0.7	-1.3	2.5	10.2	12.8	-12.8	-9.2	-10.7	-9.7
FI	-2.1	2.9	-2.9	1.5	-1.2	-4.6	0.1	1.2	0.4	-0.4	0.1	-7.2
SE	2.5	3.8	2.5	1.0	1.3	-0.1	6.9	6.8	12.1	11.6	10.4	2.5
UK	-2.3	-0.2	1.2	1.6	1.9	1.8	-2.0	-1.0	0.8	0.6	5.1	6.5
BG	5.5	1.8	7.2	1.7	-4.5	0.4	1.8	9.9	11.7	17.0	6.0	4.7
RO	4.6	-9.0	2.6	-1.5	8.0	20.3	31.4	13.7	16.2	-3.8	-1.5	32.1
TR	:	:	:	:	:	:	:	:	:	:	:	:

Table 13: Production index for chemicals and chemical products, growth rates (%)

Manufacturing industries working on orders

In the first quarter of 2004 there was no change in the level of new orders in the EU-25, on the basis of a comparison with the final quarter of 2003. Nevertheless, compared to the first quarter of 2003, new orders for manufacturing industries working on orders rose by 5.2% in the EU-25, by 4.6% in the EU-15 and

by 4.4% in the euro-zone. There is evidence (see *Figure 2*) that the new orders index accelerated more rapidly than that of industrial output in the last two quarters for which data are available for the EU-25.

The only activities (see *Table 15* overleaf) to record a decline in their

respective total new orders indices in the EU-25 between the first quarters of 2003 and 2004 were textiles, and pulp, paper and paper products. The most rapid growth of new orders (over the same period) was recorded for radio, TV and communication equipment, basic metals, and electrical machinery.

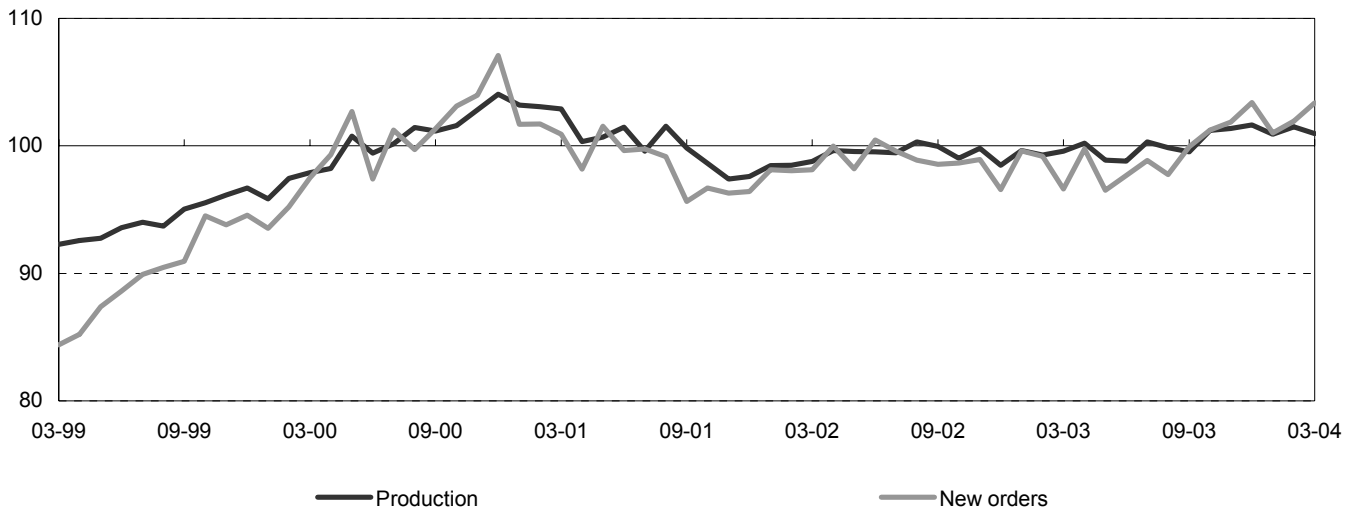


Figure 2: New orders and production indices for manufacturing industries working on orders, seasonally adjusted, EU-25 (2000=100)

	Quarter on quarter growth rates, seasonally adjusted data						Year on year growth rates, gross data					
	Q4-02	Q1-03	Q2-03	Q3-03	Q4-03	Q1-04	Q4-02	Q1-03	Q2-03	Q3-03	Q4-03	Q1-04
EU-25	-1.0	0.4	-0.5	0.9	3.3	0.0	1.7	1.0	-2.2	0.1	4.3	5.2
EU-15	-1.2	0.6	-0.8	0.7	3.4	-0.1	1.2	0.8	-2.6	-0.4	3.9	4.6
Euro-zone	-1.2	0.4	-0.8	0.5	3.8	-0.5	1.3	0.9	-2.6	-0.8	4.1	4.4
BE	-1.6	-0.4	-1.6	0.0	2.1	1.0	-3.1	-1.4	-4.4	-3.9	-0.1	1.9
CZ	2.5	-1.2	4.7	3.8	0.4	4.5	7.2	5.2	9.8	11.6	5.8	15.5
DK	-1.0	-2.6	-0.5	6.5	-3.3	-2.0	2.8	2.0	-6.8	3.8	-1.5	1.7
DE	-0.6	0.7	-1.5	0.9	3.3	0.5	3.2	3.0	-3.5	-0.1	4.0	5.1
EE	:	:	:	:	:	:	:	:	:	:	:	:
EL	:	:	:	:	:	:	:	:	:	:	:	:
ES	c	c	c	c	c	c	c	c	c	c	c	c
FR	-1.7	1.9	-0.8	-0.4	3.7	0.1	-2.8	0.4	-1.7	-2.5	5.1	3.0
IE	:	:	:	:	:	:	:	:	:	:	:	:
IT	-2.5	-3.7	0.1	0.4	3.7	0.2	3.2	-5.0	-4.4	-4.8	0.5	5.2
CY	:	:	:	:	:	:	:	:	:	:	:	:
LV	10.4	4.1	6.9	11.0	-0.5	5.7	28.4	13.6	22.3	43.9	21.1	20.9
LT	3.1	-15.1	7.0	16.2	11.1	34.9	9.7	-12.0	-2.2	9.8	17.4	87.9
LU	-3.9	5.1	-4.7	-2.0	6.2	:	3.3	11.6	-2.5	-4.9	4.2	:
HU	5.3	-4.2	7.3	5.3	6.4	5.5	17.9	4.1	9.1	15.2	16.7	25.1
MT	:	:	:	:	:	:	:	:	:	:	:	:
NL	-2.3	c	c	c	c	c	-2.2	c	c	c	c	c
AT	1.3	-2.7	0.3	3.8	2.8	:	-6.1	-3.0	-6.0	2.3	4.3	:
PL	:	:	:	:	:	:	:	:	:	:	:	:
PT	1.9	0.6	-4.9	3.7	-0.7	-3.1	15.5	8.8	-2.0	2.3	-1.9	-5.3
SI	:	:	:	:	:	:	:	:	:	:	:	:
SK	7.1	1.7	8.9	10.5	2.9	-4.2	44.5	10.4	24.0	32.2	27.1	17.2
FI	c	c	c	c	c	c	c	c	c	c	c	c
SE	2.2	1.1	1.8	1.1	-1.0	7.4	-1.4	-1.7	-1.1	7.1	2.8	10.2
UK	:	:	:	:	:	:	:	:	:	:	:	:
BG	7.0	3.8	-3.5	6.5	12.6	1.0	15.0	17.8	3.4	14.1	20.0	16.4
RO	-0.6	7.7	2.4	3.3	19.9	:	39.6	27.8	26.8	12.2	40.0	:
TR	:	:	:	:	:	:	:	:	:	:	:	:

Table 14: Total new orders index for manufacturing industries working on orders, growth rates (%)

Manufacturing industries working on orders (continued)

EU-25

	Quarter on quarter growth rates, seasonally adjusted data						Year on year growth rates, gross data					
	Q4-02	Q1-03	Q2-03	Q3-03	Q4-03	Q1-04	Q4-02	Q1-03	Q2-03	Q3-03	Q4-03	Q1-04
Manufacturing industries working on orders	-1.0	0.4	-0.5	0.9	3.3	0.0	1.7	1.0	-2.2	0.1	4.3	5.2
Textile and textile products (17)	0.2	-2.3	-1.6	-0.9	-1.6	-0.6	-3.7	-4.7	-6.1	-3.9	-6.5	-3.1
Wearing apparel (18)	-3.7	0.4	-3.2	2.5	-0.4	7.7	-8.4	1.0	-8.6	-4.9	-2.9	8.6
Pulp, paper and paper products (21)	-0.2	-0.5	-1.9	-0.9	0.4	-1.2	1.9	-0.2	-5.0	-3.4	-2.7	-2.2
Chemicals and chemical products (24)	-0.9	1.2	-1.7	1.0	1.6	-1.0	5.9	5.0	-1.4	-0.4	2.0	0.2
Basics metals (27)	-0.3	2.3	-3.4	2.3	5.8	3.9	5.1	4.4	-2.4	0.7	6.6	10.0
Fabricated metal products (28)	0.3	-1.3	-0.9	2.0	1.6	2.7	0.8	-0.2	-1.8	0.3	1.4	7.4
Machinery and equipment (29)	-0.1	-0.4	-1.8	2.1	5.0	-1.2	3.2	-0.4	-3.9	-0.1	5.0	6.0
Office machinery and computers (30)	:	:	:	:	:	:	:	:	:	:	:	:
Electrical machinery and apparatus (31)	1.2	-1.4	3.7	0.3	7.9	-1.6	5.3	1.5	4.2	4.2	11.5	11.2
Radio, TV & communication equipment (32)	3.4	2.2	-3.2	7.6	4.0	0.5	-3.2	2.7	-1.0	10.4	10.7	9.0
Medical, precision, optical inst., watches, clocks (33)	1.0	-2.1	2.6	4.0	2.3	-4.3	3.1	-3.8	-5.4	5.8	8.7	4.2
Motor vehicles, trailers and semi-trailers (34)	-2.6	1.3	-0.2	1.1	3.0	3.3	5.2	4.4	0.8	0.1	5.1	7.9
Other transport equipment (35)	-7.3	2.1	6.0	-4.5	8.0	-4.6	-12.7	-7.9	-2.0	-6.9	12.9	4.7

EU-15

	Quarter on quarter growth rates, seasonally adjusted data						Year on year growth rates, gross data					
	Q4-02	Q1-03	Q2-03	Q3-03	Q4-03	Q1-04	Q4-02	Q1-03	Q2-03	Q3-03	Q4-03	Q1-04
Manufacturing industries working on orders	-1.2	0.6	-0.8	0.7	3.4	-0.1	1.2	0.8	-2.6	-0.4	3.9	4.6
Textile and textile products (17)	0.1	-2.5	-1.9	-1.1	-2.0	-1.6	-3.9	-5.5	-6.9	-4.6	-7.5	-5.0
Wearing apparel (18)	-3.9	0.6	-4.3	2.6	-0.4	7.7	-8.7	0.9	-9.7	-5.8	-4.1	7.8
Pulp, paper and paper products (21)	0.0	-0.2	-1.9	-0.9	0.6	-1.0	2.2	0.3	-4.7	-3.0	-2.3	-1.9
Chemicals and chemical products (24)	-0.9	1.2	-1.8	1.0	1.7	-1.0	6.0	5.1	-1.4	-0.5	2.1	0.1
Basics metals (27)	-0.6	2.0	-3.5	1.7	6.7	4.2	2.8	4.0	-3.6	-0.6	6.4	10.5
Fabricated metal products (28)	0.2	-1.2	-1.0	1.7	1.7	2.6	0.7	-0.2	-2.0	-0.1	1.2	7.1
Machinery and equipment (29)	0.0	-0.6	-2.1	1.9	5.4	-1.3	3.1	-0.8	-4.4	-0.5	4.7	5.8
Office machinery and computers (30)	:	:	:	:	:	:	:	:	:	:	:	:
Electrical machinery and apparatus (31)	0.4	-0.1	2.6	-1.2	6.1	-3.6	3.4	0.8	3.3	2.1	8.3	4.4
Radio, TV & communication equipment (32)	3.0	0.9	-3.2	6.9	2.9	-1.4	-3.7	0.9	-3.7	7.7	7.4	5.3
Medical, precision, optical inst., watches, clocks (33)	1.0	-2.0	2.4	4.2	2.3	-4.5	3.4	-3.9	-5.7	5.8	8.7	4.0
Motor vehicles, trailers and semi-trailers (34)	-2.7	0.9	-0.6	0.9	3.2	3.1	4.6	3.5	-0.2	-0.9	4.3	7.4
Other transport equipment (35)	-7.5	2.2	6.0	-4.6	7.8	-4.8	-13.3	-8.3	-2.4	-7.1	12.8	4.3

Euro-zone

	Quarter on quarter growth rates, seasonally adjusted data						Year on year growth rates, gross data					
	Q4-02	Q1-03	Q2-03	Q3-03	Q4-03	Q1-04	Q4-02	Q1-03	Q2-03	Q3-03	Q4-03	Q1-04
Manufacturing industries working on orders	-1.2	0.4	-0.8	0.5	3.8	-0.5	1.3	0.9	-2.6	-0.8	4.1	4.4
Textile and textile products (17)	0.1	-2.7	-1.7	-1.1	-2.0	-1.1	-3.9	-5.5	-6.9	-4.6	-7.5	-5.1
Wearing apparel (18)	-3.8	0.7	-4.4	2.6	-0.5	7.9	-8.8	1.0	-9.8	-5.8	-4.2	7.9
Pulp, paper and paper products (21)	-0.2	-0.4	-1.5	-1.1	0.8	-0.7	2.9	0.4	-4.1	-3.5	-2.2	-2.2
Chemicals and chemical products (24)	-1.0	1.2	-1.9	1.0	1.7	-0.8	6.1	5.2	-1.6	-0.7	2.0	0.3
Basics metals (27)	-0.4	1.9	-3.7	1.7	6.9	3.9	3.0	4.1	-3.3	-0.7	6.3	10.0
Fabricated metal products (28)	0.3	-1.0	-1.2	1.7	2.0	2.6	0.4	-0.2	-1.7	0.1	1.5	7.2
Machinery and equipment (29)	0.0	-1.8	-0.7	2.3	4.8	-0.4	3.1	-1.3	-4.5	-0.4	4.6	6.0
Office machinery and computers (30)	-7.1	-0.9	-0.6	3.4	0.9	-1.9	-20.7	-19.5	-15.3	-4.7	2.8	2.3
Electrical machinery and apparatus (31)	0.3	0.5	2.4	-1.0	5.9	-3.6	3.5	1.0	3.6	2.7	8.9	4.1
Radio, TV & communication equipment (32)	2.9	2.5	-4.9	8.0	2.9	-2.9	-1.5	5.5	-1.9	8.4	8.2	2.8
Medical, precision, optical inst., watches, clocks (33)	0.4	0.1	0.1	5.0	2.1	-2.9	2.1	-2.4	-5.8	6.2	10.2	4.2
Motor vehicles, trailers and semi-trailers (34)	-3.0	0.8	-0.8	0.2	4.2	2.5	4.6	3.0	-0.8	-2.3	4.3	6.8
Other transport equipment (35)	-8.8	2.6	5.2	-5.6	8.9	-1.7	-12.7	-9.6	-3.0	-10.4	12.4	6.1

Table 15: Total new orders indices for selected manufacturing industries working on orders, growth rates (%)

➤ ESSENTIAL INFORMATION – METHODOLOGICAL NOTES

The **legal basis** for the production index is the **Council Regulation No 1165/98** of 19 May 1998 concerning short-term statistics¹ (STS-R), which is currently in the process of implementation.

The **production index** is an important business cycle indicator which shows the monthly activity of the industrial sector, which is the one of the most volatile components of the economy.

The coverage of the production index according to the STS-R includes all activities listed in Sections C to E (mining and quarrying, manufacturing, and electricity, gas and water supply) of the NACE Rev. 1² classification, except Division 41 (collection, purification and distribution of water) and Group 40.3 (steam and hot water supply).

The coverage of the new orders index includes NACE Divisions 17, 18, 21, 24, and Divisions 27 to 35.

Definition

As specified in the STS-R, and in line with traditional practice in business statistics, **the production index should show the evolution of value added at factor cost**, at constant prices. Value added at factor cost can be calculated from turnover (excluding VAT), plus capitalised production, plus other operating income, plus or minus the changes in stocks, minus the purchases of goods and services, minus other taxes on products and taxes linked to production.

¹ Official Journal No L 162, of 5 June 1998. Also available via the "Business Methods" Internet site: <http://forum.europa.eu.int/Public/irc/dsis/bmethods/home>. The deadline for the full implementation of the Regulation regarding the indices is mid-2003.

² NACE Rev. 1 - Statistical classification of economic activities in the European Community, Eurostat, 1996 (ISBN 92-826-8767-8).

This index of production should take account of:

- variations in type and quality of the commodities and of the input materials;
- changes in stocks of finished goods and work in progress;
- changes in technical input-output relations (processing techniques) and;
- services such as the assembling of production units, mounting, installations, repairs, planning, engineering, creation of software.

The observation unit for this index is the kind-of-activity unit, though, for enterprises with few persons employed in secondary activities, the local unit or the enterprise may be used as a proxy.

The new orders index is defined as the value of the contract linking a producer and a third party with respect to future deliveries by the producer of the goods and services. The order is accepted if, in the producer's judgement, there is sufficient evidence for a valid agreement. New orders include all duties and taxes on the goods or services that will be invoiced by the unit with the exception of the VAT and other similar deductible taxes directly linked to turnover. All other charges (transport, packaging, etc.) that are passed on to the customer are also included. Orders that are passed on to sub-contractors are included.

Data transmission and calculation method

Data should be transmitted to Eurostat for the Main Industrial Groupings (MIGs) and at the 2-digit level of NACE Rev. 1 by all Member States. For Section D (manufacturing), data should be transmitted at the 3-digit and 4-digit levels by those Member States whose total value added for this Section represents more than 5% of the European Community total. The data are used to produce aggregated indicators for the Community as a whole, and for the group of Member States participating in the euro-zone.

The **weights** used for the production index are based on information from the Structural Business Statistics database or information coming directly from the Member States. **Eurostat uses gross value added at factor cost to calculate the weights for the production index and turnover to calculate the weights for new orders.** Weights and the base year are revised every five years. **The current base year is 2000.**

For the production index, Member States should transmit a working day adjusted index. They may also transmit seasonally adjusted and trend-cycle indices. If data are not transmitted in these forms, Eurostat produces the adjusted figures. For the index of new orders the Member States should transmit a gross index, Eurostat performs the seasonal adjustment.

For **the calculation of** the euro-zone, EU-15 and EU-25 **seasonally adjusted aggregates**, Eurostat aggregates working day adjusted or gross data from Member States. Seasonally adjusted euro-zone, EU-15 and EU-25 series are **produced using the TRAMO & SEATS method**. For these reasons, the euro-zone, EU-15 and EU-25 seasonally adjusted growth rates might differ from the weighted growth rates of the individual Member States.

Dissemination

Eurostat publishes detailed data and time series in Theme 4/EBT-domain of NewCronos.

Further information

Carmen Lipp-Lingua
Tel: +352-4301-35253,
Fax +352-4301-34359,
Carmen.Lipp-Lingua@cec.eu.int

Abbreviations and symbols

: not available.
c confidential

Further information:

➤ Reference publications

Title Quarterly Panorama of European Business statistics
 Subscription number VPA000 Price EUR 100

➤ Databases

NewCronos, Theme 4, Domain: ebt

To obtain information or to order publications, databases and special sets of data, please contact the **Data Shop** network:

DANMARK	DEUTSCHLAND	ESPAÑA	FRANCE	ITALIA – Roma
DANMARKS STATISTIK Bibliotek og Information Eurostat Data Shop Sejrogade 11 DK-2100 KØBENHAVN Ø Tlf. (45) 39 17 30 30 Fax (45) 39 17 30 03 E-mail: bib@dst.dk URL: http://www.dst.dk/bibliotek	Statistisches Bundesamt Eurostat Data Shop Berlin Otto-Braun-Straße 70-72 (Eingang: Karl-Marx-Allee) D-10178 Berlin Tel. (49) 1888-644 94 27/28 (49) 611 75 94 27 Fax (49) 1888-644 94 30 E-Mail: datashop@destatis.de URL: http://www.eu-datashop.de/	INE Eurostat Data Shop Paseo de la Castellana, 183 Despacho 011B Entrada por Estébanez Calderón E-28046 MADRID Tel. (34) 915 839 167/ 915 839 500 Fax (34) 915 830 357 E-mail: datashop.eurostat@ine.es URL: http://www.ine.es/produser/datashop/index.html <i>Member of the MIDAS Net</i>	INSEE Info Service Eurostat Data Shop 195, rue de Bercy Tour Gamma A F-75582 PARIS CEDEX 12 Tél. (33) 1 53 17 88 44 Fax (33) 1 53 17 88 22 E-mail: datashop@insee.fr <i>Member of the MIDAS Net</i>	ISTAT Centro di informazione statistica Sede di Roma Eurostat Data Shop Via Cesare Balbo, 11a I-00184 Roma Tel. (39) 06 46 73 32 28 Fax (39) 06 46 73 31 01/ 07 E-mail: datashop@istat.it URL: http://www.istat.it/Prodotti-e/Allegati/Eurostatdatashop.html <i>Member of the MIDAS Net</i>
ITALIA – Milano	NEDERLAND	PORTUGAL	SUOMI/FINLAND	SVERIGE
ISTAT Ufficio Regionale per la Lombardia Eurostat Data Shop Via Fieno 3 I-20123 MILANO Tel. (39) 02 80 61 32 460 Fax (39) 02 80 61 32 304 E-mail: mileuro@tin.it URL: http://www.istat.it/Prodotti-e/Allegati/Eurostatdatashop.html <i>Member of the MIDAS Net</i>	Centraal Bureau voor de Statistiek Eurostat Data Shop - Voorburg Postbus 4000 NL-2270 JM VOORBURG Nederland Tel. (31) 70 337 49 00 Fax (31) 70 337 59 84 E-mail: datashop@cbs.nl URL: www.cbs.nl/eurodatashop	Eurostat Data Shop Lisboa INE/Serviço de Difusão Av. António José de Almeida, 2 P-1000-043 LISBOA Tel. (351) 21 842 61 00 Fax (351) 21 842 63 64 E-mail: data.shop@ine.pt	Statistics Finland Eurostat Data Shop Helsinki Tilastokirjasto PL 2B FIN-00022 Tilastokeskus Työpajakatu 13 B, 2.Kerros, Helsinki P. (358) 9 17 34 22 21 F. (358) 9 17 34 22 79 Sähköposti: datashop@stat.fi URL: http://www.tilastokeskus.fi/tk/kk/datashop/	Statistics Sweden Information service Eurostat Data Shop Karlavägen 100 - Box 24 300 S-104 51 STOCKHOLM Tfn (46) 8 50 69 48 01 Fax (46) 8 50 69 48 99 E-post: infoservice@scb.se URL: http://www.scb.se/templates/Standard_22884.asp
UNITED KINGDOM	NORGE	SCHWEIZ/SUISSE/SVIZZERA	UNITED STATES OF AMERICA	
Eurostat Data Shop Office for National Statistics Room 1.015 Cardiff Road Newport South Wales NP10 8XG United Kingdom Tel. (44) 1633 81 33 69 Fax (44) 1633 81 33 33 E-mail: eurostat.datashop@ons.gov.uk	Statistics Norway Library and Information Centre Eurostat Data Shop Kongens gate 6 Boks 8131 Dep. N-0033 OSLO Tel. (47) 21 09 46 42 / 43 Fax (47) 21 09 45 04 E-mail: Datashop@ssb.no URL: http://www.ssb.no/biblioteket/datashop/	Statistisches Amt des Kantons Zürich Eurostat Data Shop Bleicherweg 5 CH-8090 Zürich Tel. (41) 1 225 12 12 Fax (41) 1 225 12 99 E-mail: datashop@statistik.zh.ch URL: http://www.statistik.zh.ch	Harver Analytics Eurostat Data Shop 60 East 42nd Street Suite 3310 NEW YORK, NY 10165 USA Tel. (1) 212 986 93 00 Fax (1) 212 986 69 81 E-mail: eurodata@haver.com URL: http://www.haver.com/	

Media Support Eurostat (for professional journalists only):

Bech Building Office A4/017 • L-2920 Luxembourg • Tel. (352) 4301 33408 • Fax (352) 4301 35349 • e-mail: eurostat-mediasupport@cec.eu.int

For information on methodology

Carmen Lipp-Lingua, Eurostat / D3, L-2920 Luxembourg, Tel. (352) 4301 35253, Fax (352) 4301 34359,
 E-mail: Carmen.Lipp-Lingua@cec.eu.int

ORIGINAL: English

Please visit our web site at www.europa.eu.int/comm/eurostat/ for further information!

A list of worldwide sales outlets is available at the **Office for Official Publications of the European Communities**.

2 rue Mercier – L-2985 Luxembourg
 Tel. (352) 2929 42118 Fax (352) 2929 42709
 URL: <http://publications.eu.int>
 E-mail: info-info-opoce@cec.eu.int

BELGIQUE/BELGIË – DANMARK – DEUTSCHLAND – GREECE/ELLADA – ESPAÑA – FRANCE – IRELAND – ITALIA – LUXEMBOURG – NEDERLAND – ÖSTERREICH
 PORTUGAL – SUOMI/FINLAND – SVERIGE – UNITED KINGDOM – ÍSLAND – NORGE – SCHWEIZ/SUISSE/SVIZZERA – BALGARUJA – CESKÁ REPUBLIKA – CYPRUS
 EESTI – HRVATSKA – MAGYARORSZÁG – MALTA – POLSKA – ROMÂNIA – RUSSIA – SLOVAKIA – SLOVENIA – TÜRKIYE – AUSTRALIA – CANADA – EGYPT – INDIA
 ISRAËL – JAPAN – MALAYSIA – PHILIPPINES – SOUTH KOREA – THAILAND – UNITED STATES OF AMERICA