

# Cows' milk collection slightly increased (0.8%) in November 2003 compared to November 2002 in EU 15

*Agostino Angelini, Alain Bisval*

*Warning : These figures concern cows' milk "collection" by dairies from farms and not cows' milk "production" from farms.*

## Monthly comparison

Compared to October 2003, the cows' milk collection decreased in the EU 15 by 4.9% in raw data. If one takes account of the calendar effect (November is composed of 30 days), this is only 1.8%. In raw data, Ireland emphasize the drop of its collection with -36.9%, as for Greece, it remains as -11.4%, compared to the previous month. If one takes account of the correction due to the calendar effect, France, Italy, Luxembourg, Finland and Sweden show a progression.

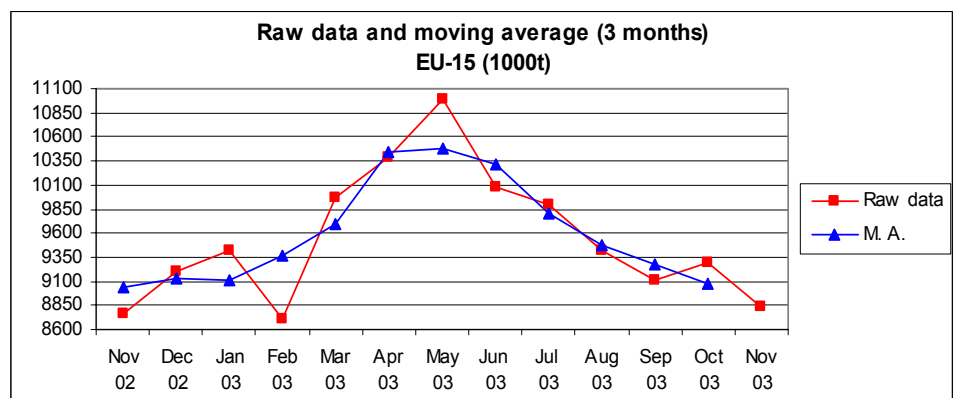
## The trend in cows' milk collection by dairies excluding the calendar effect, November 2002 – November 2003

	Collection 1000 t		Comparison with the previous month (in %)												Rate of change (%)
	Nov 2002	Nov 2003	Dec 2002	Jan 2003	Feb 2003	Mar 2003	Apr 2003	May 2003	Jun 2003	Jul 2003	Aug 2003	Sep 2003	Oct 2003	Nov 2003	Nov 2003/Nov 2002
BE	219.9	215.5	5.5	3.6	-7.4	9.4	6.4	12.3	-15.3	-3.7	-8.5	0.5	2.2	-3.3	-2.0
DK	351.9	355.1	6.6	2.6	-9.4	11.1	-0.3	5.4	-4.7	0.0	-0.8	-4.3	0.5	-3.9	0.9
DE	2068.4	2107.5	7.1	3.1	-7.8	13.4	-2.3	6.2	-6.1	1.1	-3.6	-3.6	1.4	-5.0	1.9
EL	40.3	44.4	1.1	9.2	-3.6	17.4	4.3	1.2	-4.9	1.3	-0.3	-1.2	-0.7	-11.4	10.1
ES	458.3	454.9	2.9	-1.6	-7.8	13.8	4.0	3.8	-4.6	0.0	-2.8	-3.8	0.5	-3.4	-0.7
FR	1881.0	1854.0	6.9	1.3	-9.9	9.6	9.9	2.9	-14.3	-8.3	-7.0	1.3	10.7	-0.5	-1.4
IE	237.0	269.7	-40.1	-8.5	49.2	116.6	46.0	18.8	-7.2	-3.3	-9.8	-15.5	-14.3	-36.9	13.8
IT	806.0	801.5	2.8	5.4	-5.8	10.9	0.4	-0.1	-6.9	1.2	-5.1	-1.3	0.8	-1.7	-0.6
LU	19.6	19.7	9.4	3.3	-10.0	9.1	4.3	6.7	-6.7	-2.6	-7.9	-2.4	1.1	-1.6	0.3
NL	849.8	838.2	6.4	2.1	-10.0	10.0	-1.3	6.2	-7.4	2.5	-2.9	-0.5	1.6	-6.0	-1.4
AT	199.0	199.0	7.0	2.8	-7.8	12.9	1.8	8.2	-9.2	1.3	-4.8	-5.0	1.4	-6.1	0.0
PT	140.1	133.8	3.3	0.9	-5.3	15.3	4.1	6.7	-5.8	-2.5	-9.7	-5.3	-0.3	-3.5	-4.5
FI	191.3	189.0	5.9	2.1	-8.4	10.6	-2.1	4.2	-4.9	0.0	-3.5	-4.2	1.0	-0.6	-1.2
SE	247.0	251.5	6.8	2.9	-7.6	13.2	-1.4	2.7	-6.0	-1.5	-0.1	-4.2	0.7	-1.9	1.8
UK	1055.2	1102.7	7.8	3.2	-8.0	15.6	4.7	7.5	-7.3	-2.7	-4.2	-6.7	1.3	-4.0	4.5
EU-15	8764.8	8836.5	5.0	2.4	-7.5	14.4	4.3	5.7	-8.4	-1.7	-4.7	-3.4	2.1	-4.9	0.8

Data for Belgium are estimated from August 2003 to November 2003.

## Annual Comparison

Compared to November 2002, the cows' milk collection for November 2003 increased by 0.8% in EU 15. This progression enables some countries to catch up with the losses due to the drought effect and the heat-wave. For the countries which did not particularly suffer from these climatic effects, this tendency of rising collection will force them to exercise good "control" in the final months of the milk season.



Source: Eurostat New Cronos 20/01/2004.

## Statistics in focus

### AGRICULTURE AND FISHERIES

THEME 5 – 6/2004

### AGRICULTURE

## Contents

### Cows' milk collection by dairies in EU 15 November 2003



# Further information:

## ➤ Databases

NewCronos, Theme 5, Domain: zpa1

To obtain information or to order publications, databases and special sets of data, please contact the **Data Shop** network:

DANMARK	DEUTSCHLAND	ESPAÑA	FRANCE	ITALIA – Roma
<b>DANMARKS STATISTIK</b> <b>Bibliotek og Information</b> <b>Eurostat Data Shop</b> Sejrogade 11 DK-2100 KØBENHAVN Ø Tlf. (45) 39 17 30 30 Fax (45) 39 17 30 03 E-mail: bib@dst.dk URL: <a href="http://www.dst.dk/bibliotek">http://www.dst.dk/bibliotek</a>	<b>Statistisches Bundesamt</b> <b>Eurostat Data Shop Berlin</b> Otto-Braun-Straße 70-72 (Eingang: Karl-Marx-Allee) D-10178 Berlin Tel. (49) 1888-644 94 27/28 (49) 611 75 94 27 Fax (49) 1888-644 94 30 E-Mail: <a href="mailto:datashop@destatis.de">datashop@destatis.de</a> URL: <a href="http://www.eu-datashop.de/">http://www.eu-datashop.de/</a>	<b>INE</b> <b>Eurostat Data Shop</b> Paseo de la Castellana, 183 Despacho 011B Entrada por Estébanez Caldeón E-28046 MADRID Tel. (34) 915 839 167/ 915 839 500 Fax (34) 915 830 357 E-mail: <a href="mailto:datashop@ine.es">datashop@ine.es</a> URL: <a href="http://www.ine.es/produser/datashop/index.html">http://www.ine.es/produser/datashop/index.html</a> <i>Member of the MIDAS Net</i>	<b>INSEE Info Service</b> <b>Eurostat Data Shop</b> 195, rue de Bercy Tour Gamma A F-75582 PARIS CEDEX 12 Tél. (33) 1 53 17 88 44 Fax (33) 1 53 17 88 22 E-mail: <a href="mailto:datashop@insee.fr">datashop@insee.fr</a> <i>Member of the MIDAS Net</i>	<b>ISTAT</b> <b>Centro di informazione statistica</b> <b>Sede di Roma</b> <b>Eurostat Data Shop</b> Via Cesare Balbo, 11a I-00184 Roma Tel. (39) 06 46 73 32 28 Fax (39) 06 46 73 31 01/ 07 E-mail: <a href="mailto:datashop@istat.it">datashop@istat.it</a> URL: <a href="http://www.istat.it/Prodotti-e/Allegati/Eurostatdatashop.html">http://www.istat.it/Prodotti-e/Allegati/Eurostatdatashop.html</a> <i>Member of the MIDAS Net</i>
ITALIA – Milano	NEDERLAND	PORTUGAL	SUOMI/FINLAND	SVERIGE
<b>ISTAT</b> <b>Ufficio Regionale per la Lombardia</b> <b>Eurostat Data Shop</b> Via Fieno 3 I-20123 MILANO Tel. (39) 02 80 61 32 460 Fax (39) 02 80 61 32 304 E-mail: <a href="mailto:mileuro@tin.it">mileuro@tin.it</a> URL: <a href="http://www.istat.it/Prodotti-e/Allegati/Eurostatdatashop.html">http://www.istat.it/Prodotti-e/Allegati/Eurostatdatashop.html</a> <i>Member of the MIDAS Net</i>	<b>Centraal Bureau voor de Statistiek</b> <b>Eurostat Data Shop - Voorburg</b> Postbus 4000 NL-2270 JM VOORBURG Nederland Tel. (31) 70 337 49 00 Fax (31) 70 337 59 84 E-mail: <a href="mailto:datashop@cbs.nl">datashop@cbs.nl</a> URL: <a href="http://www.cbs.nl/eurodatashop">www.cbs.nl/eurodatashop</a>	<b>Eurostat Data Shop Lisboa</b> <b>INE/Serviço de Difusão</b> Av. António José de Almeida, 2 P-1000-043 LISBOA Tel. (351) 21 842 61 00 Fax (351) 21 842 63 64 E-mail: <a href="mailto:data.shop@ine.pt">data.shop@ine.pt</a>	<b>Statistics Finland</b> <b>Eurostat Data Shop Helsinki</b> <b>Tilastokirjasto</b> PL 2B FIN-00022 Tilastokeskus Työpajakatu 13 B, 2.Kerros, Helsinki P. (358) 9 17 34 22 21 F. (358) 9 17 34 22 79 Sähköposti: <a href="mailto:datashop@stat.fi">datashop@stat.fi</a> URL: <a href="http://www.tilastokeskus.fi/tk/kk/datashop/">http://www.tilastokeskus.fi/tk/kk/datashop/</a>	<b>Statistics Sweden</b> <b>Information service</b> <b>Eurostat Data Shop</b> Karlavägen 100 - Box 24 300 S-104 51 STOCKHOLM Tfn (46) 8 50 69 48 01 Fax (46) 8 50 69 48 99 E-post: <a href="mailto:infoservice@scb.se">infoservice@scb.se</a> URL: <a href="http://www.scb.se/templates/Standard_22884.asp">http://www.scb.se/templates/Standard_22884.asp</a>
UNITED KINGDOM	NORGE	SCHWEIZ/SUISSE/SVIZZERA	UNITED STATES OF AMERICA	
<b>Eurostat Data Shop</b> <b>Office for National Statistics</b> Room 1.015 Cardiff Road Newport South Wales NP10 8XG United Kingdom Tel. (44) 1633 81 33 69 Fax (44) 1633 81 33 33 E-mail: <a href="mailto:eurostat.datashop@ons.gov.uk">eurostat.datashop@ons.gov.uk</a>	<b>Statistics Norway</b> <b>Library and Information Centre</b> <b>Eurostat Data Shop</b> Kongens gate 6 Boks 8131 Dep. N-0033 OSLO Tel. (47) 21 09 46 42 / 43 Fax (47) 21 09 45 04 E-mail: <a href="mailto:Datashop@ssb.no">Datashop@ssb.no</a> URL: <a href="http://www.ssb.no/biblioteket/datashop/">http://www.ssb.no/biblioteket/datashop/</a>	<b>Statistisches Amt des Kantons Zürich</b> <b>Eurostat Data Shop</b> Bleichenweg 5 CH-8090 Zürich Tel. (41) 1 225 12 12 Fax (41) 1 225 12 99 E-mail: <a href="mailto:datashop@statistik.zh.ch">datashop@statistik.zh.ch</a> URL: <a href="http://www.statistik.zh.ch">http://www.statistik.zh.ch</a>	<b>Harver Analytics</b> <b>Eurostat Data Shop</b> 60 East 42nd Street Suite 3310 NEW YORK, NY 10165 USA Tel. (1) 212 986 93 00 Fax (1) 212 986 69 81 E-mail: <a href="mailto:eurodata@haver.com">eurodata@haver.com</a> URL: <a href="http://www.haver.com/">http://www.haver.com/</a>	

**Media Support Eurostat (for professional journalists only):**  
 Bech Building Office A4/017 • L-2920 Luxembourg • Tel. (352) 4301 33408 • Fax (352) 4301 35349 • e-mail: [eurostat-mediasupport@cec.eu.int](mailto:eurostat-mediasupport@cec.eu.int)

## For information on methodology :

Agostino Angelini and Alain Bisval, Eurostat / E2, L-2920 Luxembourg, Tel. (352) 4301 37207, 37023, Fax (352) 4301 37318, E-mail: [Agostino.Angelini@cec.eu.int](mailto:Agostino.Angelini@cec.eu.int), [Alain.Bisval@cec.eu.int](mailto:Alain.Bisval@cec.eu.int)

ORIGINAL: English

Please visit our web site at [www.europa.eu.int/comm/eurostat/](http://www.europa.eu.int/comm/eurostat/) for further information!

A list of worldwide sales outlets is available at the **Office for Official Publications of the European Communities**.

2 rue Mercier – L-2985 Luxembourg  
 Tel. (352) 2929 42118 Fax (352) 2929 42709  
 URL: <http://publications.eu.int>  
 E-mail: [info-info-opoce@cec.eu.int](mailto:info-info-opoce@cec.eu.int)

BELGIQUE/BELGIË – DANMARK – DEUTSCHLAND – GREECE/ELLADA – ESPAÑA – FRANCE – IRELAND – ITALIA – LUXEMBOURG – NEDERLAND – ÖSTERREICH  
 PORTUGAL – SUOMI/FINLAND – SVERIGE – UNITED KINGDOM – ISLAND – NORGE – SCHWEIZ/SUISSE/SVIZZERA – BALGARIJA – ČESKÁ REPUBLIKA – CYPRUS  
 EESTI – HRVATSKA – MAGYARORSZÁG – MALTA – POLSKA – ROMÂNIA – RUSSIA – SLOVAKIA – SLOVENIA – TÜRKIYE – AUSTRALIA – CANADA – EGYPT – INDIA  
 ISRAËL – JAPAN – MALAYSIA – PHILIPPINES – SOUTH KOREA – THAILAND – UNITED STATES OF AMERICA

# Order form

I would like to subscribe to Statistics in focus (from 1.1.2004 to 31.12.2004):

(for the Data Shop and sales office addresses see above)

All 9 themes (approximately 200 issues)

Paper: EUR 240

Language required:  DE  EN  FR

Statistics in focus can be downloaded (pdf file) free of charge from the Eurostat web site. You only need to register. For other solutions, contact your Data Shop.

Please send me a free copy of 'Eurostat mini-guide' (catalogue containing a selection of Eurostat products and services)

Language required:  DE  EN  FR

I would like a free subscription to 'Statistical References', the information letter on Eurostat products and services

Language required:  DE  EN  FR

Mr  Mrs  Ms

(Please use block capitals)

Surname: \_\_\_\_\_ Forename: \_\_\_\_\_

Company: \_\_\_\_\_ Department: \_\_\_\_\_

Function: \_\_\_\_\_

Address: \_\_\_\_\_

Post code: \_\_\_\_\_ Town: \_\_\_\_\_

Country: \_\_\_\_\_

Tel.: \_\_\_\_\_ Fax: \_\_\_\_\_

E-mail: \_\_\_\_\_

**Payment on receipt of invoice, preferably by:**

Bank transfer

Visa  Eurocard

Card No: \_\_\_\_\_ Expires on: \_\_\_\_/\_\_\_\_/\_\_\_\_

**Please confirm your intra-Community VAT number:**

If no number is entered, VAT will be automatically applied. Subsequent reimbursement will not be possible.