

# Statistics in focus

## POPULATION AND SOCIAL CONDITIONS

17/2004

### Population and living conditions

Author  
**Ómar S. Harðarson**

## Contents

Activity rates.....	3
Employment rates .....	4
Part-time employment as share of total employment .....	5
Average actual hours worked .....	6
Share of employees with temporary contracts.....	7
Share of persons whose job started within past 3 months.....	8
Unemployment rates .....	9
Long term unemployment rates...	10
Methodological notes .....	11



Manuscript completed on: 29.10.2004  
ISSN 1024-4352  
Catalogue number: KS-NK-04-017-EN-N  
© European Communities, 2004

## Main results from the EU Labour Force Survey

# The labour market in the 1st quarter 2004

The European Union Labour Force Survey (EU-LFS) now provides quarterly results for all Member States except for Germany<sup>1</sup>, Cyprus and Luxembourg. This Statistics in Focus is the first Eurostat publication presenting the main results based on the quarterly data. The data in this publication have not been adjusted for seasonal variation.

### Employment rate of women increases

In the first quarter 2004 the employment rate of the resident population in the EU-25 (15-64 years of age) was 62.6%, compared to 62.4% in the first quarter 2003 and 63.1% in the fourth quarter 2003. Between the first quarters of 2003 and 2004 the male employment rate did not change significantly, while the female employment rate in the EU-25 increased slightly from 54.6% to 55.2%<sup>2</sup>.

The increase in female employment is mostly due to an increase in part-time employment. The share of this type of employment for women increased between the first quarter of 2003 and 2004 from 27.8% to 29.0%. While the employment rates of men did not go up in this period, those men who were at work worked 0.6 hours longer per week on the average in the first quarter 2004 compared to the same quarter 2003.

Other main indicators of the labour market did not show significant changes. Between the first quarter 2003 and the first quarter 2004 there was no significant change in the number of persons having a "new job" nor was there a significant change in the (unadjusted) unemployment rates of persons 15-64 years of age, or in the share of long-term unemployed persons in that age group.

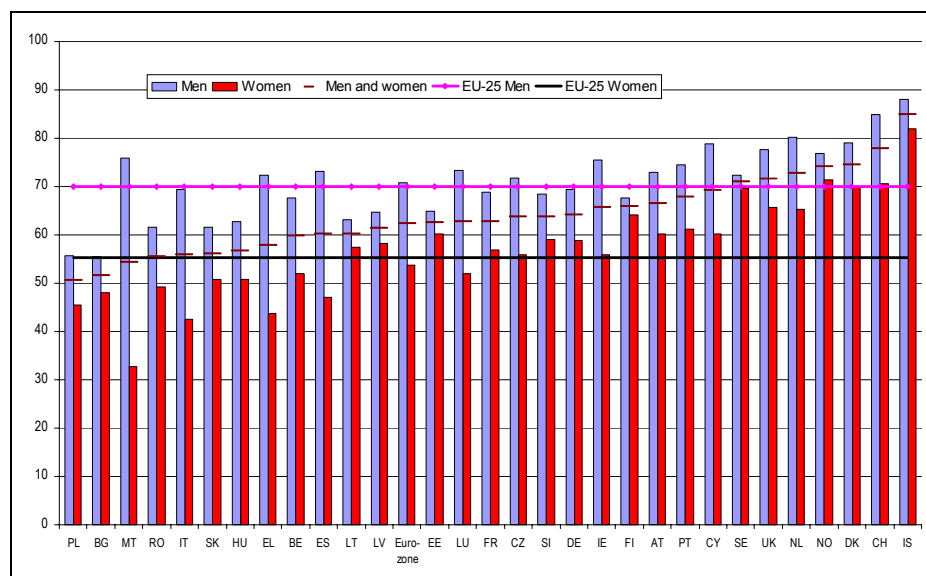


Figure 1. Employment rates by sex of persons aged 15-64, 1st quarter 2004.  
Source: EU-LFS.

<sup>1</sup> The Federal Statistical Office of Germany provides quarterly estimates for the main characteristics until the German LFS becomes quarterly from 2005 onwards.

<sup>2</sup> As data from Greece are missing for the 1<sup>st</sup> quarter 2004, the increase for the EU-25 aggregate without Greece is 54.9% in the 1<sup>st</sup> quarter 2003 to 55.2% in the 1<sup>st</sup> quarter 2004.

## Activity rates of women increase but unemployment rates remain unchanged

The activity rate of women, aged 15-64, in the EU-25, i.e. the percentage of women who were either employed or unemployed was 61.5% in the first quarter 2004, or up by 0.7 percentage points from the first quarter 2003. The activity rate of men in the first quarter 2004 was 77.0% compared to 77.1% one year before. The

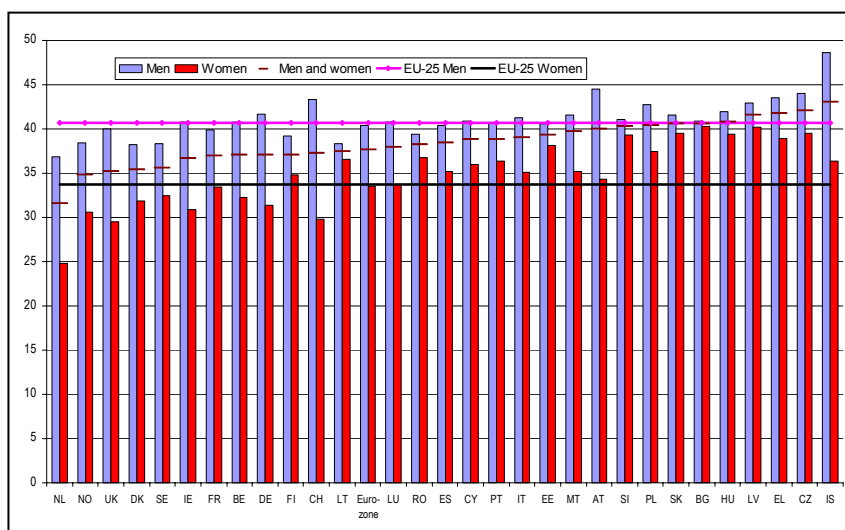
unemployment rate of persons aged 15-64 years in the EU-25 was 9.6% in the first quarter of 2004 compared to 9.5% in the first quarter of 2003. The unemployment rate of men in this age group was 9.1% in the first quarter 2004, while the unemployment rate of women was 10.3%.

## Men in full-time jobs worked 42 hours per week

The average number of hours actually worked per week in the EU-25 was 37.7 hours in all jobs in the first quarter 2004, up from 37.3 hours in the first quarter 2003 but slightly down from 38.0 hours in the fourth quarter 2003. In the EU-25, persons working full-time in

their main job worked on the average 40.8 hours per week in the first quarter 2004. Men in full-time jobs worked 42.0 hours on the average, while women in full-time jobs worked 38.8 hours on the average per week during the first quarter 2004.

Figure 2. Average actual hours worked per week, 1st quarter 2004.



Source: EU-LFS.

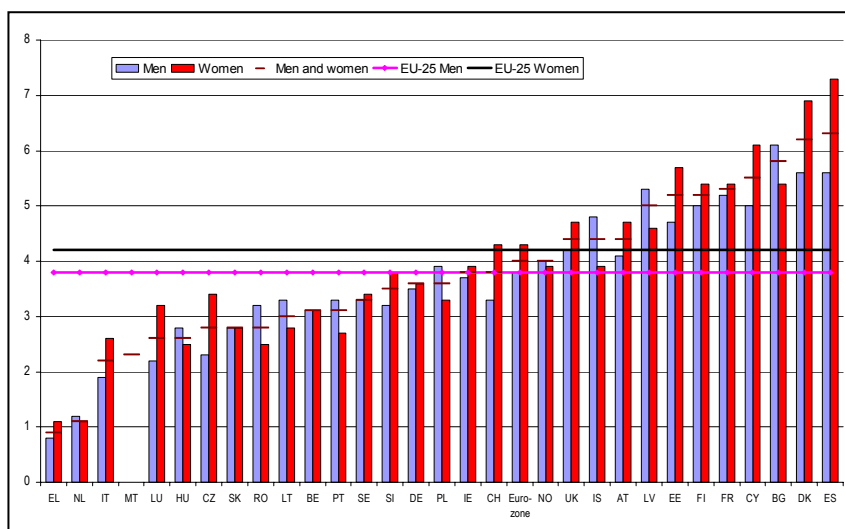
Note: Only persons who worked at least one hour during the reference week are included in the average.

## Share of persons having a "new job" remains the same

The percentage of persons who had acquired new jobs in the past three months was 4.0% of all employed within the EU-25 in the first quarter 2004 compared to 3.9% in the same quarter 2003. Between the fourth

quarter 2003 and the first quarter 2004 this percentage fell from 4.7% to 4.0%. The share of employed men with a "new job" was 3.8% compared to women where this share was 4.2%.

Figure 3. Persons having a "new job" in the last three months, as a percentage of the employed population, 1st quarter 2004.



Source: EU-LFS.

Note: Maltese data by sex are not presented since they lack reliability (small sample size)

**Table 1. Activity rates by levels of educational attainment, age group and sex 2004q1**

	Euro-zone <sup>2</sup>				EU-25 <sup>2</sup>			
	15-64	15-24	25-54	55-64	15-64	15-24	25-54	55-64
<b>Men and women</b>	<b>68.7</b>	<b>43.4</b>	<b>83.0</b>	<b>40.7</b>	<b>69.2</b>	<b>44.5</b>	<b>83.3</b>	<b>43.1</b>
Less than upper secondary	55.5	34.4	73.7	33.1	52.9	30.1	72.3	33.8
Upper secondary level	74.4	54.2	85.7	43.0	75.2	58.6	85.2	47.3
Third level	86.0	63.9	91.9	61.6	86.8	69.8	92.1	64.6
<b>Men</b>	<b>77.3</b>	<b>46.9</b>	<b>92.5</b>	<b>51.1</b>	<b>77.0</b>	<b>47.8</b>	<b>91.6</b>	<b>53.5</b>
Less than upper secondary	68.4	39.7	89.8	45.8	64.5	35.1	87.7	45.5
Upper secondary level	80.8	57.6	92.8	49.5	81.3	62.5	91.9	53.7
Third level	89.5	62.0	95.9	67.3	90.0	69.1	95.8	69.2
<b>Women</b>	<b>60.1</b>	<b>39.8</b>	<b>73.5</b>	<b>30.7</b>	<b>61.5</b>	<b>41.1</b>	<b>75.0</b>	<b>33.3</b>
Less than upper secondary	43.2	28.5	58.0	23.5	41.9	24.6	57.8	24.9
Upper secondary level	67.9	50.9	78.5	36.0	68.9	54.7	78.4	40.1
Third level	82.3	65.1	87.8	52.1	83.6	70.3	88.5	57.6

**Table 2. Activity rates by country, quarter and sex**

15-64 years	2004q1 (1000) <sup>1</sup>	Men and women			Men			Women		
		2004q1	2003q4	2003q1	2004q1	2003q4	2003q1	2004q1	2003q4	2003q1
<b>EU-25<sup>2</sup></b>	.	<b>69.2</b>	<b>69.4</b>	<b>69.0</b>	<b>77.0</b>	<b>77.5</b>	<b>77.1</b>	<b>61.5</b>	<b>61.3</b>	<b>60.8</b>
<b>EU-15<sup>2</sup></b>	.	<b>70.0</b>	<b>70.2</b>	<b>69.8</b>	<b>78.1</b>	<b>78.6</b>	<b>78.3</b>	<b>62.0</b>	<b>61.7</b>	<b>61.2</b>
<b>Euro-zone<sup>2</sup></b>	.	<b>68.7</b>	<b>68.8</b>	<b>68.3</b>	<b>77.3</b>	<b>77.8</b>	<b>77.3</b>	<b>60.1</b>	<b>59.8</b>	<b>59.3</b>
BE	4,472	65.6	66.0	64.3	73.5	73.8	71.9	57.6	58.1	56.6
CZ	5,039	69.8	70.1	70.3	77.5	77.9	78.1	62.2	62.4	62.7
DK	2,829	79.4	79.4	78.7	83.7	83.1	83.4	75.0	75.5	73.8
DE	39,199	71.7	72.3	71.7	78.3	79.1	78.7	65.0	65.5	64.7
EE	634	69.7	70.5	68.7	73.5	75.0	72.9	66.3	66.5	64.9
EL	.	.	64.0	63.6	.	77.1	77.3	.	51.4	50.6
ES	18,911	67.9	67.8	66.7	79.8	80.0	79.2	55.9	55.6	54.0
FR	26,458	69.5	69.4	69.4	75.3	75.7	75.4	63.7	63.3	63.6
IE	1,886	68.8	68.9	68.0	79.3	79.2	78.5	58.2	58.5	57.4
IT	23,718	61.3	61.6	61.1	74.6	74.9	74.6	48.1	48.3	47.8
CY	.	.	72.2	.	.	82.1	.	.	63.1	.
LV	1,103	69.5	68.5	68.5	73.7	73.0	74.0	65.7	64.4	63.3
LT	1,590	69.3	68.8	68.4	72.5	72.3	72.3	66.2	65.6	64.9
LU	.	.	65.1	.	.	75.5	.	.	54.5	.
HU	4,117	60.3	60.8	59.9	67.1	67.7	66.9	53.8	54.3	53.4
MT	159	58.7	58.3	58.6	81.5	79.5	80.1	35.7	36.7	36.8
NL	8,371	76.5	76.1	76.4	83.9	83.7	83.9	68.9	68.3	68.8
AT	3,830	70.2	72.1	71.6	77.1	80.1	79.4	63.5	64.1	63.9
PL	16,696	64.0	63.9	63.6	70.1	70.1	69.5	58.0	57.9	57.8
PT	5,133	72.7	72.9	73.0	79.1	79.6	79.5	66.4	66.4	66.6
SI	965	68.6	67.9	66.8	73.4	73.0	71.5	63.7	62.6	61.9
SK	2,631	69.7	70.1	69.8	76.4	76.7	76.6	63.1	63.7	63.2
FI	2,519	72.7	72.5	73.4	75.0	74.9	75.0	70.5	70.2	71.9
SE	4,463	76.4	76.6	76.5	78.5	78.6	77.9	74.3	74.5	74.9
UK	28,770	75.2	75.7	75.3	82.0	82.7	82.5	68.5	68.6	68.0
IS	.	.	87.6	.	.	91.1	.	.	84.1	.
NO	2,288	76.9	78.5	78.0	80.2	81.6	81.4	73.5	75.3	74.6
<b>EEA-28<sup>2</sup></b>	.	<b>69.3</b>	<b>69.5</b>	<b>69.1</b>	<b>77.1</b>	<b>77.6</b>	<b>77.2</b>	<b>61.6</b>	<b>61.4</b>	<b>61.0</b>
CH	.	.	81.2	.	.	88.4	.	.	73.9	.
BG	3,169	59.7	60.2	59.5	64.5	64.8	63.9	55.1	55.8	55.3
RO	9,135	61.1	61.0	60.4	68.5	68.1	68.0	53.8	54.0	53.0

Note: Cyprus, Luxembourg and Switzerland provide for 2003 annual data only, data from Iceland are from the spring 2002. These are not included in the quarterly totals. The quarterly data for Germany are not from the LFS.

<sup>1</sup> Number of persons aged 15-64 in the labour force.

<sup>2</sup> Based on available data.

**Table 3. Employment rates by levels of educational attainment, age group and sex 2004q1**

	Euro-zone <sup>2</sup>				EU-25 <sup>2</sup>			
	15-64	15-24	25-54	55-64	15-64	15-24	25-54	55-64
<b>Men and women</b>	<b>62.3</b>	<b>35.8</b>	<b>76.0</b>	<b>37.7</b>	<b>62.6</b>	<b>36.1</b>	<b>76.1</b>	<b>40.2</b>
Less than upper secondary	48.8	27.5	65.4	30.6	46.0	23.6	63.5	31.3
Upper secondary level	67.7	45.6	78.8	39.3	67.8	47.8	77.7	43.9
Third level	80.8	54.6	86.6	58.7	82.2	60.9	87.5	61.9
<b>Men</b>	<b>70.7</b>	<b>38.6</b>	<b>85.5</b>	<b>47.5</b>	<b>70.0</b>	<b>38.6</b>	<b>84.4</b>	<b>49.9</b>
Less than upper secondary	61.1	32.1	81.3	42.4	56.9	27.6	78.4	42.1
Upper secondary level	74.0	48.2	86.0	45.4	73.6	50.8	84.4	49.8
Third level	84.8	52.7	91.1	64.2	85.6	59.9	91.4	66.3
<b>Women</b>	<b>53.8</b>	<b>32.9</b>	<b>66.5</b>	<b>28.3</b>	<b>55.2</b>	<b>33.6</b>	<b>67.9</b>	<b>31.1</b>
Less than upper secondary	37.1	22.4	50.0	21.7	35.8	19.1	49.4	23.1
Upper secondary level	61.3	43.2	71.4	32.7	61.7	45.0	70.9	37.3
Third level	76.6	55.8	82.0	49.4	78.7	61.5	83.6	55.3

**Table 4. Employment rates by country, quarter and sex**

15-64 years	2004q1 (1000) <sup>1</sup>	Men and women			Men			Women		
		2004q1	2003q4	2003q1	2004q1	2003q4	2003q1	2004q1	2003q4	2003q1
<b>EU-25<sup>2</sup></b>	.	<b>62.6</b>	<b>63.1</b>	<b>62.4</b>	<b>70.0</b>	<b>71.0</b>	<b>70.2</b>	<b>55.2</b>	<b>55.2</b>	<b>54.6</b>
<b>EU-15<sup>2</sup></b>	.	<b>64.1</b>	<b>64.5</b>	<b>63.9</b>	<b>71.9</b>	<b>72.9</b>	<b>72.1</b>	<b>56.3</b>	<b>56.2</b>	<b>55.7</b>
<b>Euro-zone<sup>2</sup></b>	.	<b>62.3</b>	<b>62.7</b>	<b>62.0</b>	<b>70.7</b>	<b>71.7</b>	<b>70.9</b>	<b>53.8</b>	<b>53.7</b>	<b>53.2</b>
BE	4,083	59.9	60.4	59.0	67.6	67.9	66.3	52.0	52.8	51.6
CZ	4,596	63.7	64.4	65.0	71.7	72.8	73.3	55.8	56.0	56.7
DK	2,654	74.5	75.0	74.4	79.0	79.1	79.5	69.9	70.9	69.2
DE	35,084	64.1	65.6	64.3	69.4	71.5	70.0	58.8	59.5	58.5
EE	568	62.5	63.7	61.2	64.9	67.8	64.5	60.2	60.1	58.2
EL	.	.	57.8	57.2	.	72.3	72.1	.	43.8	42.9
ES	16,748	60.1	60.2	58.8	73.1	73.4	72.5	47.0	46.9	45.0
FR	23,910	62.8	62.9	63.2	68.8	69.2	69.2	56.9	56.7	57.3
IE	1,801	65.7	65.6	64.8	75.4	75.2	74.4	55.9	56.0	55.0
IT	21,630	55.9	56.3	55.5	69.4	69.9	69.0	42.5	42.7	42.0
CY	.	.	69.2	.	.	78.8	.	.	60.2	.
LV	975	61.4	61.4	61.1	64.8	65.9	66.0	58.3	57.3	56.7
LT	1,381	60.2	60.7	59.0	63.2	63.8	61.4	57.4	57.8	56.7
LU	.	.	62.7	.	.	73.3	.	.	52.0	.
HU	3,866	56.6	57.5	56.1	62.8	63.9	62.3	50.7	51.3	50.2
MT	148	54.4	53.7	54.7	75.9	73.3	74.8	32.8	33.7	34.3
NL	7,968	72.8	73.0	73.6	80.1	80.5	80.8	65.3	65.4	66.1
AT	3,626	66.5	69.0	68.2	73.0	76.7	75.3	60.1	61.5	61.2
PL	13,193	50.5	51.4	50.4	55.7	57.0	55.2	45.5	45.9	45.6
PT	4,787	67.8	67.9	68.1	74.5	74.8	74.9	61.2	61.2	61.5
SI	898	63.8	63.3	62.0	68.5	68.4	66.6	59.0	58.0	57.4
SK	2,118	56.1	57.8	56.9	61.6	63.6	61.9	50.7	52.2	51.9
FI	2,282	65.9	66.5	66.4	67.6	68.7	67.5	64.2	64.3	65.3
SE	4,151	71.0	72.0	72.0	72.4	73.5	73.0	69.7	70.5	70.9
UK	27,420	71.6	72.0	71.6	77.7	78.2	77.8	65.7	65.6	65.2
IS	.	.	85.0	.	.	88.0	.	.	81.9	.
NO	2,206	74.2	75.5	75.0	76.9	78.2	78.0	71.3	72.7	71.8
<b>EEA-28<sup>2</sup></b>	.	<b>62.7</b>	<b>63.2</b>	<b>62.6</b>	<b>70.1</b>	<b>71.1</b>	<b>70.3</b>	<b>55.3</b>	<b>55.3</b>	<b>54.8</b>
CH	.	.	77.8	.	.	84.9	.	.	70.6	.
BG	2,741	51.6	52.5	50.2	55.4	56.2	53.3	48.0	48.8	47.1
RO	8,286	55.4	56.7	55.2	61.6	62.9	61.6	49.3	50.5	49.0

Note: Cyprus, Luxembourg and Switzerland provide for 2003 annual data only, data from Iceland are from the spring 2002. These are not included in the quarterly totals. The quarterly data for Germany are not from the LFS.

<sup>1</sup> The number of employed persons aged 15-64.

<sup>2</sup> Based on available data.

**Table 5. Part-time employment as share of total employment by broad groups of economic activity in the main job, age group and sex 2004q1**

	Euro-zone <sup>2</sup>				EU-25 <sup>2</sup>			
	15+	15-24	25-54	55+	15+	15-24	25-54	55+
<b>Men and women</b>	<b>15.7</b>	<b>23.7</b>	<b>14.3</b>	<b>19.4</b>	<b>16.6</b>	<b>26.3</b>	<b>14.0</b>	<b>24.7</b>
NACE A, B	17.2	25.0	11.3	30.1	19.8	36.2	13.4	33.4
NACE C, D, E	6.5	8.3	6.0	9.3	6.2	8.0	5.3	11.3
NACE F	3.9	5.0	3.5	5.7	4.6	5.1	3.8	9.5
NACE G, H, I	15.7	31.6	13.1	15.1	18.2	37.2	13.7	22.6
NACE J, K	16.5	23.0	15.4	20.6	16.7	21.0	14.8	27.6
NACE L-Q	23.5	32.1	22.7	24.9	23.8	31.3	21.9	31.5
<b>Men</b>	<b>5.8</b>	<b>16.4</b>	<b>3.7</b>	<b>11.3</b>	<b>6.9</b>	<b>19.3</b>	<b>3.9</b>	<b>14.9</b>
NACE A, B	10.5	22.5	4.2	23.4	13.8	33.5	7.2	26.2
NACE C, D, E	2.6	6.0	1.8	5.9	2.8	6.3	1.7	7.5
NACE F	1.9	4.4	1.2	3.9	2.4	4.5	1.5	6.3
NACE G, H, I	6.4	24.4	3.5	9.0	8.3	29.5	3.8	13.0
NACE J, K	6.0	20.5	3.8	12.9	7.3	18.8	4.1	19.9
NACE L-Q	9.3	24.2	7.5	13.7	10.1	26.3	7.1	18.8
<b>Women</b>	<b>29.4</b>	<b>33.2</b>	<b>28.4</b>	<b>33.4</b>	<b>29.0</b>	<b>34.8</b>	<b>26.7</b>	<b>40.1</b>
NACE A, B	31.2	(34.1)	26.2	42.3	31.0	44.4	24.7	46.1
NACE C, D, E	16.3	13.3	16.2	22.8	14.2	12.1	13.5	25.4
NACE F	30.7	.	32.0	(36.5)	30.2	(13.4)	30.1	46.5
NACE G, H, I	29.0	38.8	27.3	26.4	31.6	44.7	27.4	38.8
NACE J, K	29.2	25.3	29.0	37.8	28.2	23.0	27.4	42.8
NACE L-Q	32.3	35.9	31.7	34.0	31.4	33.8	29.9	40.6

**Table 6. Part-time employment as share of total employment by country, quarter and sex**

15+ years	2004q1 (1000) <sup>1</sup>	Men and women			Men			Women		
		2004q1	2003q4	2003q1	2004q1	2003q4	2003q1	2004q1	2003q4	2003q1
<b>EU-25<sup>2</sup></b>	.	<b>16.6</b>	<b>15.9</b>	<b>15.9</b>	<b>6.9</b>	<b>6.7</b>	<b>6.8</b>	<b>29.0</b>	<b>28.0</b>	<b>27.8</b>
<b>EU-15<sup>2</sup></b>	.	<b>18.6</b>	<b>17.7</b>	<b>17.7</b>	<b>7.1</b>	<b>6.9</b>	<b>7.0</b>	<b>33.5</b>	<b>32.0</b>	<b>32.0</b>
<b>Euro-zone<sup>2</sup></b>	.	<b>15.7</b>	<b>15.0</b>	<b>15.0</b>	<b>5.8</b>	<b>5.7</b>	<b>5.8</b>	<b>29.4</b>	<b>27.8</b>	<b>27.9</b>
BE	875	21.3	20.5	20.8	6.5	6.5	6.5	40.8	38.8	39.5
CZ	234	5.0	5.1	4.9	2.4	2.3	2.1	8.4	8.7	8.4
DK	604	22.4	22.0	20.4	11.4	11.8	11.7	35.2	33.8	30.8
DE	.	.	21.7	.	.	6.1	.	.	40.8	.
EE	51	8.6	9.0	8.5	4.7	5.6	4.7	12.4	12.5	12.3
EL	.	.	4.4	4.5	.	2.3	2.3	.	7.8	8.0
ES	1,413	8.4	8.2	8.1	2.6	2.6	2.6	17.5	16.9	17.0
FR	3,982	16.6	16.5	16.7	5.2	5.3	5.5	30.0	29.9	29.9
IE	309	16.8	16.6	16.8	6.4	6.2	6.8	31.1	30.9	30.7
IT	1,854	8.4	8.5	8.4	3.0	3.1	3.1	17.3	17.5	17.1
CY	.	.	8.9	.	.	5.5	.	.	13.2	.
LV	107	10.7	10.4	11.4	7.8	8.2	9.2	13.6	12.6	13.8
LT	138	9.9	9.6	10.9	7.9	6.8	9.5	11.9	12.5	12.4
LU	.	.	13.3	.	.	1.5	.	.	30.3	.
HU	178	4.6	4.1	3.9	3.2	2.4	2.5	6.2	6.0	5.7
MT	13	8.9	9.0	9.1	4.8	3.9	3.4	18.5	20.3	21.7
NL	3,673	45.6	45.2	44.6	22.4	22.3	21.6	74.8	74.3	73.6
AT	782	21.4	19.2	18.6	5.6	4.9	4.8	40.4	36.6	35.3
PL	1,427	10.6	10.8	10.5	8.2	8.3	8.6	13.4	13.7	12.8
PT	581	11.4	11.4	12.0	7.2	7.2	7.5	16.4	16.6	17.2
SI	79	8.6	7.6	5.5	7.7	6.7	4.6	9.8	8.7	6.7
SK	56	2.6	2.6	2.2	1.5	1.3	1.0	4.0	4.1	3.6
FI	313	13.6	13.4	13.9	9.2	9.2	9.0	18.3	18.0	18.9
SE	1,001	23.7	23.1	23.1	12.0	11.3	11.3	36.4	35.8	35.8
UK	7,285	26.1	25.0	25.1	10.2	9.6	9.9	44.5	43.9	43.8
IS	.	.	27.8	.	.	12.7	.	.	44.8	.
NO	671	29.9	29.0	29.4	15.0	13.9	14.3	46.5	45.8	46.1
<b>EEA-28<sup>2</sup></b>	.	<b>16.8</b>	<b>16.1</b>	<b>16.1</b>	<b>7.0</b>	<b>6.8</b>	<b>6.9</b>	<b>29.3</b>	<b>28.2</b>	<b>28.1</b>
CH	.	.	32.8	.	.	11.7	.	.	58.5	.
BG	54	1.9	1.8	2.4	1.7	1.5	2.2	2.2	2.1	2.7
RO	1,231	14.1	11.2	10.8	13.3	10.6	10.9	15.0	11.9	10.6

Note: Germany, Cyprus, Luxembourg and Switzerland provide for 2003 annual data only, data from Iceland are from the spring 2002. These are not included in the quarterly totals. Data between brackets lack reliability due to small sample size.

<sup>1</sup> Number of persons aged 15 years or more in part-time employment.

<sup>2</sup> Based on available data.

**Table 7. Average actual hours worked in all jobs per week by broad groups of economic activity in the main job, full-time/ part-time distinction and sex 2004q1**

	Euro-zone <sup>2</sup>			EU-25 <sup>2</sup>		
	Total	Full-time	Part-time	Total	Full-time	Part-time
<b>Men and women</b>	<b>37.6</b>	<b>40.4</b>	<b>21.8</b>	<b>37.7</b>	<b>40.8</b>	<b>20.9</b>
NACE A, B	42.2	46.5	20.8	39.6	44.2	19.9
NACE C, D, E	38.9	39.9	23.3	39.5	40.5	22.6
NACE F	40.1	40.7	23.4	40.7	41.6	21.6
NACE G, H, I	39.3	42.5	21.5	38.8	42.8	20.2
NACE J, K	37.5	40.5	21.8	37.6	40.8	20.9
NACE L-Q	33.9	37.4	22.0	34.4	38.3	21.4
<b>Men</b>	<b>40.4</b>	<b>41.5</b>	<b>22.7</b>	<b>40.7</b>	<b>42.0</b>	<b>21.3</b>
NACE A, B	45.3	47.8	22.1	42.7	46.0	20.7
NACE C, D, E	39.9	40.3	24.0	40.5	41.0	22.9
NACE F	40.6	40.8	27.8	41.4	41.7	24.6
NACE G, H, I	42.0	43.4	21.1	41.9	43.8	19.9
NACE J, K	40.6	41.7	22.7	40.7	42.1	21.2
NACE L-Q	37.4	38.7	23.9	38.1	39.8	22.2
<b>Women</b>	<b>33.5</b>	<b>38.3</b>	<b>21.5</b>	<b>33.7</b>	<b>38.8</b>	<b>20.8</b>
NACE A, B	35.7	42.7	19.9	33.8	40.0	19.2
NACE C, D, E	36.1	38.7	23.0	37.0	39.3	22.5
NACE F	32.9	38.6	20.0	32.9	38.7	18.9
NACE G, H, I	35.3	40.8	21.6	34.5	40.9	20.3
NACE J, K	33.6	38.5	21.6	33.7	38.7	20.8
NACE L-Q	31.6	36.3	21.7	32.4	37.3	21.2

**Table 8. Average actual hours worked in all jobs per week by country, quarter and sex**

15+ years	2004q1 (1000) <sup>1</sup>	Men and women			Men			Women		
		2004q1	2003q4	2003q1	2004q1	2003q4	2003q1	2004q1	2003q4	2003q1
<b>EU-25<sup>2</sup></b>	.	<b>37.7</b>	<b>38.0</b>	<b>37.3</b>	<b>40.7</b>	<b>41.0</b>	<b>40.1</b>	<b>33.7</b>	<b>33.9</b>	<b>33.5</b>
<b>EU-15<sup>2</sup></b>	.	<b>36.9</b>	<b>37.4</b>	<b>36.5</b>	<b>40.2</b>	<b>40.6</b>	<b>39.6</b>	<b>32.5</b>	<b>32.9</b>	<b>32.2</b>
<b>Euro-zone<sup>2</sup></b>	.	<b>37.6</b>	<b>37.7</b>	<b>36.9</b>	<b>40.4</b>	<b>40.5</b>	<b>39.5</b>	<b>33.5</b>	<b>33.6</b>	<b>33.0</b>
BE	3,535	37.1	36.8	36.9	40.8	40.3	40.5	32.3	32.1	32.3
CZ	4,251	42.1	41.4	42.2	44.0	43.5	44.3	39.5	38.6	39.4
DK	2,348	35.4	35.7	35.7	38.2	38.7	38.1	31.9	32.1	32.6
DE	.	.	37.1	.	.	41.7	.	.	31.4	.
EE	567	39.3	39.9	39.6	40.6	41.6	41.4	38.1	38.2	37.9
EL	.	.	41.8	41.8	.	43.5	43.6	.	38.9	38.7
ES	16,111	38.4	38.4	38.5	40.4	40.3	40.4	35.2	35.3	35.3
FR	21,167	37.0	36.4	37.0	39.9	39.4	39.9	33.4	32.9	33.5
IE	1,693	36.7	38.2	37.0	40.8	42.5	41.0	30.9	32.1	31.3
IT	20,721	39.0	39.3	35.4	41.3	41.6	37.6	35.1	35.3	31.8
CY	.	.	38.8	.	.	40.9	.	.	36.0	.
LV	966	41.6	42.3	42.3	42.9	43.8	43.3	40.2	40.7	41.1
LT	1,358	37.5	37.7	37.3	38.3	38.9	38.2	36.6	36.5	36.4
LU	.	.	37.9	.	.	40.8	.	.	33.7	.
HU	3,752	40.8	41.2	41.1	42.0	42.6	42.5	39.4	39.4	39.6
MT	144	39.7	39.6	34.9	41.6	41.7	37.1	35.2	35.1	30.1
NL	7,114	31.6	32.3	31.5	36.9	37.8	36.8	24.8	25.0	24.7
AT	3,296	40.0	38.5	39.2	44.5	41.8	42.6	34.3	34.3	34.9
PL	12,835	40.4	40.3	40.4	42.7	42.7	42.7	37.5	37.2	37.6
PT	4,881	38.8	38.3	38.9	40.7	40.3	41.0	36.4	35.9	36.4
SI	835	40.3	41.0	41.2	41.1	42.0	42.2	39.3	39.6	40.0
SK	1,992	40.6	40.6	40.6	41.6	41.6	41.3	39.5	39.4	39.8
FI	2,021	37.1	37.6	37.1	39.2	39.9	39.5	34.8	34.9	34.5
SE	3,653	35.6	36.4	35.9	38.3	39.1	38.5	32.5	33.2	33.0
UK	24,090	35.2	36.8	35.3	40.0	41.6	40.0	29.5	30.6	29.6
IS	.	.	43.0	.	.	48.6	.	.	36.4	.
NO	1,951	34.8	34.8	34.8	38.4	38.2	38.4	30.6	30.7	30.5
<b>EEA-28<sup>2</sup></b>	.	<b>37.6</b>	<b>37.9</b>	<b>37.2</b>	<b>40.6</b>	<b>41.0</b>	<b>40.1</b>	<b>33.6</b>	<b>33.9</b>	<b>33.4</b>
CH	.	.	37.3	.	.	43.3	.	.	29.8	.
BG	2,502	40.6	40.8	40.4	40.9	41.3	40.9	40.3	40.3	40.0
RO	8,613	38.2	39.8	39.0	39.4	41.0	40.0	36.8	38.4	37.7

Note: Tables 7 and 8 refer only to persons at work (working 1 hour or more) during the reference week in either the main or second job. Germany, Cyprus, Luxembourg and Switzerland provide for 2003 annual data only, data from Iceland are from the spring 2002. These are not included in the quarterly totals.

<sup>1</sup> Number of persons aged 15 years or more at work during the reference week.

<sup>2</sup> Based on available data.

**Table 9. Share of employees with temporary contracts by broad groups of economic activity in the main job, age group and sex 2004q1**

	Euro-zone <sup>2</sup>				EU-25 <sup>2</sup>			
	15+	15-24	25-54	55+	15+	15-24	25-54	55+
<b>Men and women</b>	<b>15.1</b>	<b>42.0</b>	<b>12.3</b>	<b>7.1</b>	<b>12.8</b>	<b>32.6</b>	<b>10.5</b>	<b>7.8</b>
NACE A, B	36.1	54.0	34.0	29.3	27.1	45.4	25.1	21.3
NACE C, D, E	10.7	37.6	7.8	3.7	10.1	32.2	7.8	4.6
NACE F	25.3	46.1	21.9	16.2	20.0	36.4	17.8	11.5
NACE G, H, I	14.3	38.9	10.0	4.6	12.1	28.7	8.7	5.5
NACE J, K	12.3	40.0	9.8	5.6	10.7	29.9	8.5	8.5
NACE L-Q	15.7	49.0	14.2	6.7	13.3	37.8	11.8	8.7
<b>Men</b>	<b>13.8</b>	<b>41.9</b>	<b>10.8</b>	<b>6.7</b>	<b>12.0</b>	<b>32.9</b>	<b>9.5</b>	<b>7.2</b>
NACE A, B	32.0	51.2	29.3	26.2	24.6	43.3	22.3	18.9
NACE C, D, E	9.8	38.6	6.8	3.4	9.3	33.2	6.8	4.1
NACE F	26.0	46.3	22.7	16.6	20.9	37.0	18.6	11.9
NACE G, H, I	11.8	38.0	8.0	3.9	10.4	27.7	7.3	4.8
NACE J, K	11.1	41.7	8.5	(5.9)	10.2	32.7	7.6	9.3
NACE L-Q	12.4	49.0	11.0	5.2	11.7	38.2	10.1	7.8
<b>Women</b>	<b>16.8</b>	<b>42.3</b>	<b>14.3</b>	<b>7.8</b>	<b>13.7</b>	<b>32.2</b>	<b>11.6</b>	<b>8.6</b>
NACE A, B	46.2	63.4	45.2	(37.5)	33.6	52.5	32.1	27.8
NACE C, D, E	12.9	35.5	10.3	(5.0)	11.9	30.1	10.1	6.3
NACE F	16.3	(41.5)	13.2	.	11.3	28.2	9.4	.
NACE G, H, I	17.6	39.8	12.8	6.1	14.2	29.5	10.4	6.6
NACE J, K	13.5	38.5	11.1	(5.2)	11.3	27.5	9.4	7.3
NACE L-Q	17.6	49.0	16.1	7.9	14.2	37.6	12.7	9.3

**Table 10. Share of employees with temporary contracts by country, quarter and sex**

15+ years	2004q1 (1000) <sup>1</sup>	Men and women			Men			Women		
		2004q1	2003q4	2003q1	2004q1	2003q4	2003q1	2004q1	2003q4	2003q1
<b>EU-25<sup>2</sup></b>	.	<b>12.8</b>	<b>13.1</b>	<b>12.4</b>	<b>12.0</b>	<b>12.3</b>	<b>11.5</b>	<b>13.7</b>	<b>14.1</b>	<b>13.6</b>
<b>EU-15<sup>2</sup></b>	.	<b>12.7</b>	<b>13.0</b>	<b>12.6</b>	<b>11.7</b>	<b>11.9</b>	<b>11.3</b>	<b>14.0</b>	<b>14.3</b>	<b>14.1</b>
<b>Euro-zone<sup>2</sup></b>	.	<b>15.1</b>	<b>15.4</b>	<b>14.9</b>	<b>13.8</b>	<b>14.0</b>	<b>13.4</b>	<b>16.8</b>	<b>17.0</b>	<b>16.7</b>
BE	295	8.5	8.6	7.8	6.0	6.7	5.2	11.6	11.1	11.0
CZ	345	9.0	9.8	8.2	7.2	8.3	6.8	11.0	11.5	9.7
DK	219	8.9	8.7	8.9	8.3	7.5	8.4	9.5	10.1	9.4
DE	.	.	12.1	.	.	12.1	.	.	12.2	.
EE	12	2.2	(1.7)	2.2	(2.7)	(2.2)	(2.9)	(1.8)	.	.
EL	.	.	11.2	9.7	.	9.9	8.3	.	13.1	11.8
ES	4,125	30.1	30.7	30.3	28.0	28.6	28.4	33.1	33.7	33.1
FR	2,620	12.3	12.4	12.4	10.8	11.3	11.0	13.9	13.7	14.1
IE	65	4.3	4.8	4.8	3.6	3.9	4.3	5.1	5.9	5.5
IT	1,466	9.2	10.3	9.1	7.6	8.6	7.7	11.4	12.8	11.2
CY	.	.	12.5	.	.	8.1	.	.	17.1	.
LV	93	10.6	9.7	12.2	12.6	11.3	14.7	8.6	8.1	9.6
LT	69	6.2	6.3	6.0	8.4	8.6	7.7	4.0	4.1	4.4
LU	.	.	3.2	.	.	2.5	.	.	4.1	.
HU	202	6.0	8.0	6.6	6.4	8.8	7.3	5.6	7.1	5.9
MT	3	2.4	2.6	3.7	.	.	(3.1)	(4.1)	(4.6)	(4.8)
NL	996	14.0	14.5	14.0	12.8	13.4	12.0	15.5	15.8	16.5
AT	276	8.7	6.7	7.2	9.2	6.9	7.5	8.0	6.4	6.8
PL	2,028	20.3	20.9	17.2	21.2	22.2	18.1	19.3	19.5	16.1
PT	760	20.3	20.2	20.9	18.8	18.7	19.2	22.0	21.9	22.8
SI	125	16.0	14.4	13.0	14.6	13.5	11.4	17.6	15.6	14.8
SK	87	4.6	5.3	3.6	4.7	5.6	3.5	4.5	4.9	3.8
FI	275	13.7	14.5	14.5	10.2	10.6	10.2	17.2	18.4	18.7
SE	522	13.8	14.2	14.1	11.5	11.7	11.3	16.1	16.7	16.7
UK	1,442	6.0	6.2	6.0	5.3	5.5	5.1	6.6	6.9	7.0
IS	.	.	5.4	.	.	5.3	.	.	5.5	.
NO	.	.	4.8	.	.	3.9	.	.	5.6	.
<b>EEA-28</b>	.	.	.	.	.	.	.	.	.	.
CH	.	.	12.1	.	.	11.8	.	.	12.4	.
BG	116	4.8	6.1	4.2	5.2	6.7	4.3	4.4	5.5	4.0
RO	167	2.9	1.8	1.8	3.3	2.0	2.0	2.4	1.6	1.6

Note: Germany, Cyprus, Luxembourg, Norway and Switzerland provide for 2003 annual data only, data from Iceland are from the spring 2002. These are not included in the quarterly totals. Data between brackets lack reliability due to small sample size.

<sup>1</sup> The number of persons in employment having temporary job contracts.

<sup>2</sup> Based on available data.

**Table 11. Share of persons whose job started within past 3 months by broad groups of economic activity in the main job, age groups and sex 2004q1**

	Euro-zone <sup>2</sup>				EU-25 <sup>2</sup>			
	15+	15-24	25-54	55+	15+	15-24	25-54	55+
<b>Men and women</b>	<b>4.0</b>	<b>12.3</b>	<b>3.3</b>	<b>1.5</b>	<b>4.0</b>	<b>12.0</b>	<b>3.2</b>	<b>1.6</b>
NACE A, B	7.2	18.3	7.3	4.1	4.7	12.5	4.6	2.5
NACE C, D, E	3.5	12.1	2.7	(1.0)	3.4	10.9	2.8	1.2
NACE F	5.4	11.4	4.8	(2.2)	5.0	11.0	4.4	2.0
NACE G, H, I	4.3	12.1	3.4	1.1	4.7	12.5	3.5	1.6
NACE J, K	4.1	14.7	3.4	(1.4)	4.3	14.4	3.5	1.9
NACE L-Q	3.2	12.3	2.7	1.1	3.2	11.8	2.7	1.4
<b>Men</b>	<b>3.8</b>	<b>12.2</b>	<b>3.1</b>	<b>1.6</b>	<b>3.8</b>	<b>11.7</b>	<b>3.1</b>	<b>1.6</b>
NACE A, B	6.7	18.0	6.3	4.4	4.7	12.7	4.3	2.7
NACE C, D, E	3.3	12.3	2.4	(1.0)	3.3	11.0	2.6	1.3
NACE F	5.4	11.6	4.8	(2.1)	5.0	11.1	4.5	2.0
NACE G, H, I	3.7	11.3	3.0	(0.8)	4.1	11.8	3.2	1.4
NACE J, K	3.8	16.3	3.1	.	4.0	15.0	3.3	1.8
NACE L-Q	2.5	11.8	2.1	(1.1)	2.8	11.7	2.3	1.4
<b>Women</b>	<b>4.3</b>	<b>12.5</b>	<b>3.6</b>	<b>1.5</b>	<b>4.2</b>	<b>12.4</b>	<b>3.4</b>	<b>1.6</b>
NACE A, B	8.2	(19.5)	9.4	(3.6)	4.8	(12.0)	5.2	(2.2)
NACE C, D, E	4.2	11.5	3.5	.	3.9	10.6	3.3	.
NACE F	4.8	.	(4.6)	.	4.3	.	3.9	.
NACE G, H, I	5.2	13.0	3.9	(1.5)	5.5	13.3	4.0	1.9
NACE J, K	4.5	13.2	3.8	.	4.7	13.9	3.8	(2.2)
NACE L-Q	3.5	12.5	3.1	(1.0)	3.4	11.8	3.0	1.3

**Table 12. Share of persons whose job started within past 3 months by country, quarter and sex**

15+ years	2004q1 (1000) <sup>1</sup>	Men and women			Men			Women		
		2004q1	2003q4	2003q1	2004q1	2003q4	2003q1	2004q1	2003q4	2003q1
<b>EU-25<sup>2</sup></b>	.	<b>4.0</b>	<b>4.7</b>	<b>3.9</b>	<b>3.8</b>	<b>4.3</b>	<b>3.7</b>	<b>4.2</b>	<b>5.2</b>	<b>4.3</b>
<b>EU-15<sup>2</sup></b>	.	<b>4.1</b>	<b>4.9</b>	<b>4.1</b>	<b>3.9</b>	<b>4.4</b>	<b>3.8</b>	<b>4.4</b>	<b>5.6</b>	<b>4.6</b>
<b>Euro-zone<sup>2</sup></b>	.	<b>4.0</b>	<b>4.6</b>	<b>4.0</b>	<b>3.8</b>	<b>4.2</b>	<b>3.6</b>	<b>4.3</b>	<b>5.3</b>	<b>4.4</b>
BE	127	3.1	4.2	3.0	3.1	3.8	3.1	3.1	4.7	2.8
CZ	129	2.8	2.9	2.7	2.3	2.3	2.3	3.4	3.7	3.1
DK	167	6.2	6.4	6.0	5.6	5.4	5.8	6.9	7.6	6.3
DE	.	.	3.6	.	.	3.5	.	.	3.6	.
EE	31	5.2	3.9	4.6	4.7	4.0	5.8	5.7	3.8	(3.4)
EL	.	.	0.9	2.9	.	0.8	2.8	.	1.1	2.9
ES	1,057	6.3	7.1	6.4	5.6	6.1	5.8	7.3	8.7	7.5
FR	1,275	5.3	6.3	5.3	5.2	6.3	4.9	5.4	6.5	5.9
IE	70	3.8	5.2	3.8	3.7	4.3	3.4	3.9	6.4	4.4
IT	478	2.2	3.0	2.3	1.9	2.5	2.1	2.6	3.9	2.7
CY	.	.	5.5	.	.	5.0	.	.	6.1	.
LV	50	5.0	4.4	5.6	5.3	4.4	6.2	4.6	4.3	5.0
LT	43	3.0	3.8	3.0	3.3	4.6	3.1	2.8	2.9	2.9
LU	.	.	2.6	.	.	2.2	.	.	3.2	.
HU	103	2.6	3.0	3.1	2.8	2.9	3.2	2.5	3.1	3.0
MT	3	2.3	2.1	3.0	(2.7)	(1.9)	(2.6)	.	.	(3.8)
NL	92	1.1	1.2	1.2	1.2	1.1	1.1	1.1	1.2	1.3
AT	160	4.4	.	2.7	4.1	.	2.6	4.7	.	2.8
PL	491	3.6	3.8	3.0	3.9	3.8	3.3	3.3	3.8	2.7
PT	157	3.1	3.4	3.0	3.3	3.3	3.1	2.7	3.6	2.9
SI	32	3.5	3.9	3.3	3.2	3.7	3.3	3.8	4.0	3.2
SK	60	2.8	3.2	2.9	2.8	2.9	2.7	2.8	3.5	3.0
FI	119	5.2	5.9	5.2	5.0	5.1	4.5	5.4	6.8	5.9
SE	141	3.3	4.0	3.9	3.3	4.0	3.8	3.4	4.0	4.0
UK	1,230	4.4	5.8	4.5	4.2	5.4	4.2	4.7	6.4	4.9
IS	.	.	4.4	.	.	4.8	.	.	3.9	.
NO	.	.	4.0	.	.	4.0	.	.	3.9	.
<b>EEA-28</b>	.	.	.	.	.	.	.	.	.	.
CH	.	.	3.8	.	.	3.3	.	.	4.3	.
BG	161	5.8	3.9	4.6	6.1	3.8	4.7	5.4	4.0	4.4
RO	249	2.8	1.8	2.0	3.2	1.9	2.5	2.5	1.6	1.4

Note: Germany, Cyprus, Luxembourg, Norway and Switzerland provide for 2003 annual data only, data from Iceland are from the spring 2002. These are not included in the quarterly totals. Data between brackets lack reliability due to small sample size.

<sup>1</sup> The number of persons whose job started within the past 3 months.

<sup>2</sup> Based on available data.



**Table 13. Unemployment rates<sup>1</sup> by levels of educational attainment, age groups and sex 2004q1**

	Euro-zone <sup>2</sup>				EU-25 <sup>2</sup>			
	15-64	15-24	25-54	55-64	15-64	15-24	25-54	55-64
<b>Men and women</b>	<b>9,4</b>	<b>17,5</b>	<b>8,5</b>	<b>7,4</b>	<b>9,6</b>	<b>18,9</b>	<b>8,6</b>	<b>6,6</b>
Less than upper secondary	12,1	20,1	11,2	7,5	12,9	21,8	12,2	7,4
Upper secondary level	9,1	15,8	8,1	8,6	9,9	18,3	8,8	7,2
Third level	6,1	14,6	5,8	4,8	5,3	12,8	5,1	4,1
<b>Men</b>	<b>8,6</b>	<b>17,6</b>	<b>7,5</b>	<b>7,0</b>	<b>9,1</b>	<b>19,3</b>	<b>7,9</b>	<b>6,7</b>
Less than upper secondary	10,7	19,2	9,5	7,2	11,8	21,3	10,6	7,5
Upper secondary level	8,4	16,4	7,3	8,2	9,5	18,8	8,1	7,4
Third level	5,3	15,1	5,0	4,6	4,9	13,3	4,6	4,2
<b>Women</b>	<b>10,4</b>	<b>17,4</b>	<b>9,6</b>	<b>7,9</b>	<b>10,3</b>	<b>18,3</b>	<b>9,5</b>	<b>6,5</b>
Less than upper secondary	14,2	21,6	13,8	7,9	14,5	22,7	14,4	7,2
Upper secondary level	9,8	15,2	9,0	9,1	10,5	17,8	9,6	7,0
Third level	7,0	14,2	6,6	5,2	5,8	12,5	5,5	3,9

**Table 14. Unemployment rates<sup>1</sup> by country, quarter and sex**

15-64 years	2004q1 (1000) <sup>2</sup>	Men and women			Men			Women		
		2004q1	2003q4	2003q1	2004q1	2003q4	2003q1	2004q1	2003q4	2003q1
<b>EU-25<sup>3</sup></b>	.	<b>9,6</b>	<b>9,1</b>	<b>9,5</b>	<b>9,1</b>	<b>8,3</b>	<b>8,9</b>	<b>10,3</b>	<b>10,0</b>	<b>10,2</b>
<b>EU-15<sup>3</sup></b>	.	<b>8,5</b>	<b>8,1</b>	<b>8,4</b>	<b>7,9</b>	<b>7,4</b>	<b>7,8</b>	<b>9,1</b>	<b>9,0</b>	<b>9,1</b>
<b>Euro-zone<sup>3</sup></b>	.	<b>9,4</b>	<b>8,8</b>	<b>9,2</b>	<b>8,6</b>	<b>7,8</b>	<b>8,4</b>	<b>10,4</b>	<b>10,1</b>	<b>10,4</b>
BE	389	8,7	8,5	8,2	7,9	8,0	7,7	9,7	9,2	9,0
CZ	443	8,8	8,2	7,6	7,5	6,6	6,0	10,3	10,2	9,6
DK	175	6,2	5,4	5,4	5,6	4,8	4,7	6,8	6,1	6,2
DE	4.116	10,5	9,4	10,3	11,3	9,6	11,0	9,6	9,1	9,5
EE	66	10,4	9,6	10,9	11,6	9,6	11,5	9,1	9,6	10,3
EL	.	.	9,7	10,1	.	6,2	6,7	.	14,8	15,1
ES	2.163	11,4	11,3	11,8	8,4	8,2	8,4	15,8	15,6	16,7
FR	2.547	9,6	9,5	9,0	8,7	8,7	8,2	10,7	10,4	9,9
IE	85	4,5	4,7	4,7	4,9	5,0	5,2	4,0	4,3	4,1
IT	2.088	8,8	8,6	9,2	7,0	6,7	7,4	11,6	11,5	12,0
CY	.	.	4,2	.	.	3,9	.	.	4,6	.
LV	129	11,7	10,4	10,7	12,1	9,7	10,9	11,3	11,1	10,4
LT	209	13,1	11,8	13,8	12,9	11,8	15,1	13,4	11,8	12,5
LU	.	.	3,7	.	.	3,0	.	.	4,6	.
HU	251	6,1	5,6	6,4	6,4	5,6	6,9	5,8	5,5	5,9
MT	12	7,2	8,0	6,7	6,9	7,8	6,6	8,0	8,3	6,9
NL	404	4,8	4,0	3,7	4,6	3,8	3,6	5,1	4,2	3,8
AT	203	5,3	4,3	4,7	5,3	4,3	5,1	5,3	4,2	4,3
PL	3.502	21,0	19,6	20,8	20,5	18,7	20,6	21,6	20,7	21,1
PT	346	6,7	6,9	6,7	5,8	6,0	5,9	7,8	7,9	7,7
SI	67	7,0	6,8	7,1	6,7	6,4	7,0	7,4	7,4	7,3
SK	513	19,5	17,5	18,5	19,3	17,1	19,2	19,7	18,1	17,8
FI	237	9,4	8,3	9,6	9,9	8,3	10,0	8,9	8,3	9,1
SE	312	7,0	5,9	5,9	7,7	6,5	6,4	6,2	5,3	5,3
UK	1.350	4,7	4,9	5,0	5,2	5,3	5,7	4,1	4,5	4,2
IS	.	.	3,0	.	.	3,4	.	.	2,6	.
NO	82	3,6	3,8	3,9	4,1	4,2	4,1	3,0	3,4	3,7
<b>EEA-28<sup>3</sup></b>	.	<b>9,6</b>	<b>9,0</b>	<b>9,4</b>	<b>9,1</b>	<b>8,3</b>	<b>8,9</b>	<b>10,2</b>	<b>10,0</b>	<b>10,1</b>
CH	.	.	4,2	.	.	3,9	.	.	4,5	.
BG	428	13,5	12,9	15,7	14,1	13,2	16,6	12,9	12,5	14,8
RO	850	9,3	7,1	8,6	10,1	7,7	9,5	8,3	6,4	7,6

Note: Cyprus, Luxembourg and Switzerland provide for 2003 annual data only, data from Iceland are from the spring 2002. These are not included in the quarterly totals. The quarterly data for Germany are not from the LFS.

<sup>1</sup> Harmonised unemployment series as published on a monthly basis by Eurostat differ from these results due to the estimation methods applied (including seasonal adjustments).

<sup>2</sup> The number of unemployed persons, aged 15-64.

<sup>3</sup> Based on available data.

**Table 15. Long term unemployment rates by levels of educational attainment, age groups and sex 2004q1**

	Euro-zone <sup>2</sup>				EU-25 <sup>2</sup>			
	15-64	15-24	25-54	55-64	15-64	15-24	25-54	55-64
<b>Men and women</b>	<b>3.7</b>	<b>6.0</b>	<b>3.4</b>	<b>3.0</b>	<b>4.0</b>	<b>6.2</b>	<b>3.8</b>	<b>2.8</b>
Less than upper secondary	5.0	8.0	4.7	3.6	5.7	8.7	5.6	3.8
Upper secondary level	3.3	5.2	3.0	2.8	4.1	5.8	3.9	2.7
Third level	2.1	2.6	2.1	1.8	1.7	2.1	1.7	1.4
<b>Men</b>	<b>3.0</b>	<b>5.5</b>	<b>2.7</b>	<b>2.8</b>	<b>3.5</b>	<b>6.1</b>	<b>3.2</b>	<b>2.9</b>
Less than upper secondary	4.0	7.0	3.7	3.4	4.9	8.1	4.5	3.8
Upper secondary level	2.4	4.4	2.2	2.4	3.6	5.5	3.3	2.9
Third level	1.8	(2.8)	1.8	1.9	1.5	(2.0)	1.5	1.5
<b>Women</b>	<b>4.5</b>	<b>6.7</b>	<b>4.3</b>	<b>3.4</b>	<b>4.5</b>	<b>6.3</b>	<b>4.5</b>	<b>2.7</b>
Less than upper secondary	6.4	9.6	6.4	4.0	6.9	9.7	7.1	3.7
Upper secondary level	4.3	6.1	4.0	3.3	4.8	6.1	4.7	2.4
Third level	2.4	(2.5)	2.4	(1.7)	1.9	2.1	1.9	(1.3)

**Table 16. Long term unemployment rates by country, quarter and sex**

15-64 years	2004q1 (1000) <sup>1</sup>	Men and women			Men			Women		
		2004q1	2003q4	2003q1	2004q1	2003q4	2003q1	2004q1	2003q4	2003q1
<b>EU-25<sup>2</sup></b>	.	<b>4.0</b>	<b>3.9</b>	<b>4.0</b>	<b>3.5</b>	<b>3.5</b>	<b>3.5</b>	<b>4.5</b>	<b>4.5</b>	<b>4.6</b>
<b>EU-15<sup>2</sup></b>	.	<b>2.9</b>	<b>2.9</b>	<b>2.9</b>	<b>2.6</b>	<b>2.5</b>	<b>2.5</b>	<b>3.4</b>	<b>3.5</b>	<b>3.5</b>
<b>Euro-zone<sup>2</sup></b>	.	<b>3.7</b>	<b>3.6</b>	<b>3.6</b>	<b>3.0</b>	<b>2.9</b>	<b>2.9</b>	<b>4.5</b>	<b>4.5</b>	<b>4.6</b>
BE	189	4.2	3.9	3.8	3.7	3.6	3.4	5.0	4.3	4.4
CZ	222	4.4	4.0	3.7	3.4	3.0	2.9	5.6	5.2	4.8
DK	37	1.3	1.2	0.8	1.2	1.3	0.8	1.5	1.1	0.8
DE	.	.	4.9	.	.	4.9	.	.	4.8	.
EE	31	4.9	4.9	4.8	6.0	4.5	5.3	3.7	5.3	4.2
EL	.	.	5.4	5.2	.	3.1	2.9	.	8.7	8.6
ES	716	3.8	3.9	4.0	2.4	2.4	2.4	5.7	6.0	6.3
FR	968	3.7	3.5	3.3	3.3	3.2	3.0	4.1	3.8	3.7
IE	32	1.7	1.5	1.6	2.2	1.9	2.0	1.0	0.9	1.0
IT	1,187	5.0	4.9	5.3	4.0	3.9	4.3	6.6	6.5	6.9
CY	.	.	1.0	.	.	0.8	.	.	1.3	.
LV	54	4.9	4.8	4.2	5.0	4.6	4.2	4.7	5.1	4.3
LT	97	6.1	5.9	6.8	6.2	6.0	6.9	6.0	5.9	6.7
LU	.	.	0.9	.	.	1.0	.	.	0.8	.
HU	110	2.7	2.6	2.3	2.9	2.7	2.4	2.5	2.5	2.1
MT	6	3.9	3.9	3.1	4.2	4.2	3.6	(3.3)	(3.2)	.
NL	128	1.5	1.1	0.9	1.5	1.1	0.9	1.6	1.2	0.9
AT	56	1.5	1.4	1.1	1.4	1.5	1.2	1.5	1.3	1.0
PL	1,793	10.7	11.0	11.7	10.0	10.4	11.1	11.6	11.8	12.5
PT	149	2.9	2.6	2.2	2.3	2.3	1.7	3.6	3.1	2.8
SI	34	3.5	3.5	3.5	3.8	3.2	3.7	3.2	3.8	3.3
SK	317	12.1	11.4	11.8	11.9	11.3	12.0	12.2	11.6	11.7
FI	57	2.3	2.3	2.4	2.5	2.5	2.8	2.0	2.0	2.1
SE	56	1.3	1.2	0.9	1.5	1.4	1.2	1.0	0.9	0.7
UK	293	1.0	1.1	1.1	1.3	1.4	1.4	0.7	0.7	0.6
IS	.	.	0.4	.	.	0.3	.	.	0.4	.
NO	13	0.6	0.7	0.5	0.8	0.8	0.7	.	0.5	.
<b>EEA-28<sup>2</sup></b>	.	<b>3.9</b>	<b>3.9</b>	<b>3.9</b>	<b>3.5</b>	<b>3.4</b>	<b>3.5</b>	<b>4.5</b>	<b>4.5</b>	<b>4.5</b>
CH	.	.	1.1	.	.	0.8	.	.	1.4	.
BG	256	8.1	8.5	9.8	8.2	8.8	10.6	7.9	8.2	8.9
RO	522	5.7	4.7	5.0	6.6	4.8	5.5	4.6	4.6	4.3

Note: Germany, Cyprus, Luxembourg and Switzerland provide for 2003 annual data only, data from Iceland are from the spring 2002. These are not included in the quarterly totals. Data between brackets lack reliability due to small sample size.

<sup>1</sup> The number of persons in long-term unemployment, aged 15-64 years.

<sup>2</sup> Based on available data.

## ➤ ESSENTIAL INFORMATION – METHODOLOGICAL NOTES

### Definitions and sources

**Source:** the European Union Labour Force Survey is a quarterly (except in Germany, Cyprus, Luxembourg and Switzerland where it is annual), large sample survey providing results for the population in private households in the EU, EFTA and the Candidate countries. **Conscripts** in military or community service are not included in the results. The sampling rates vary between 0.2% and 3.3%. The survey provides quarterly results on labour participation of people aged 15 and over as well as on persons outside the labour force. The figures in this publication are **not seasonally adjusted**.

**PRELIMINARY DATA.** The estimates for the United Kingdom (in 2003) and Ireland are based on population estimates that predate the most recent Censuses of the Population in these countries. These estimates may therefore differ from that of the most recently published national data. Data for Italy are provisional. Revised figures will be made available to Eurostat in the near future. As all aggregates are based on available data in the respective quarters, these will change if and when new data arrive.

**BREAKS.** As of 1<sup>st</sup> quarter 2004, the sample for the Austrian LFS is spread over all weeks of the quarter. This makes the results not comparable with previous years.

**The economically active population** comprises employed and unemployed persons. **Employed persons** are persons aged 15 and over (ES, UK: 16 and over, DK, EE, HU, LV, SE, FI, NO: 15-74, IS: 16-74) who during the reference week performed work, even for just one hour per week, for pay, profit or family gain or were not at work but had a job or business from which they were temporarily absent because of, e.g., illness, holidays, industrial dispute and education or training. **Unemployed persons** are persons aged 15-74 (in ES, UK and IS: 16-74) who were without work during the reference week, were currently available for work and were either actively seeking work in the past four weeks or had already found a job to start within the next three months.

**Employment rates and activity rates** are measured relative to the total population of the same sex and age. **(Long-term) unemployment rates** are measured relative to the active population of the same sex and age.

**Employees** are defined as persons who work for a public or private employer and who receive compensation in the form of wages, salaries, payment by results or payment in kind; non-conscript members of the armed forces are also included. **Employees with temporary contracts** are those who declare themselves as having a fixed term employment contract or a job which will terminate if certain objective criteria are met, such as completion of an assignment or return of the employee who was temporarily replaced.

**Average actual hours worked** in all jobs are the sum of hours in the main and second jobs in the reference week divided by the number of persons who were actually working at least one hour in either main or second job during the reference week. These hours include all hours including extra hours, whether paid or not. Travel time between home and work as well as the main meal breaks are excluded. Persons who indicated that they also worked at home are asked to include those hours. Apprentices, trainees and other persons in vocational training are asked to exclude the time spent in school or other special training centres.

**The full-time/part-time distinction in the main job** is declared by the respondent except in the Netherlands, Iceland and Norway where part-time is determined if the usual hours are fewer than 35 hours and full-time if the usual hours are 35 hours or more, and in Sweden where this criterion is applied to the self-employed.

**Persons having a "new" job** are persons who have been in their present employment (main job) for less than three months. This should not be confused with the concept of "job creation" as the jobs are only "new" from the perspective of the respondents.

**Duration of unemployment** is the duration of the search for employment or the length of the period since leaving least job, whichever period is shorter.

**Long-term unemployed persons** are persons who have been unemployed for one year or more.

**The reference week** starts on Monday and ends on Sunday. In all of the countries providing quarterly data the quarterly sample is spread uniformly over all weeks of the quarter, except in Italy where one fixed week is observed. The **reference quarter** is the calendar quarter except in Ireland and the United Kingdom, which use the seasonal quarter (Dec-Feb, Mar-May, Jun-Aug, Sep-Nov).

**Classification by economic activity:** six economic activities are distinguished on the basis of an aggregation of the sections of the Standard Classification of Economic Activities (NACE rev.1): A,B (agriculture and fishing) C-E (mining and quarrying, manufacturing, electricity, gas and water supply) F (construction) G-I (wholesale, retail trade and repair, hotels and restaurants, transport, storage and communication) J,K (financial intermediation, real estate, renting and business activities) L-Q (public administration, social security, education, health and social work, other community, social and personal service activities, private households, extra-territorial organisations and bodies).

The Netherlands did not provide data on the economic activity for this publication. For the Netherlands the last known distribution is applied (2002q4) in order to produce figures for the EU aggregates by broad groups of economic activity.

**Level of educational attainment** is defined according to the International Classification of Education 1997 (ISCED 1997). Three levels are distinguished: Less than upper secondary (ISCED 1 or 2), upper secondary (ISCED 3-4), and third level (ISCED 5-6). In this publication Germany, the Netherlands and Finland do not provide data on the level of educational attainment. For these countries the last known distribution is applied (Germany 2003q2, the Netherlands 2002q4, Finland 2003q4) in order to produce figures with aggregate distribution by level of educational attainment.

**Country codes** applied in this publication: BE (Belgium), CZ (Czech Republic), DK (Denmark), DE (Germany), EE (Estonia), EL (Greece), ES (Spain), FR (France, excluding the 'Département d'Outre-Mer', i.e. Guadeloupe, Martinique, Guyane and Réunion), IE (Ireland), IT (Italy), CY (Cyprus), LV (Latvia), LT (Lithuania), LU (Luxembourg), HU (Hungary), MT (Malta), NL (Netherlands), AT (Austria), PL (Poland), PT (Portugal), SI (Slovenia), SK (Slovakia), FI (Finland), SE (Sweden), UK (United Kingdom), EU-25 (European Union), EU-15 (former European Union of 15 Member States), Euro-zone (Belgium, Germany, Greece, Spain, France, Ireland, Italy, Luxembourg, the Netherlands, Austria, Portugal and Finland), IS (Iceland), NO (Norway), EEA-28 (European Economic Area, including all EU-25 countries, Iceland and Norway, excluding Liechtenstein), CH (Switzerland), BG (Bulgaria), RO (Romania).

**Symbols:** () data between brackets lack reliability due to small sample size; "." dots are used for unavailable or extremely unreliable data. Quarter 1 of the year 2004 is written as 2004q1.

## *Further information:*

### ➤ **Databases**

[EUROSTAT website/Population and social conditions/Labour market](#)

---

### **Journalists can contact the media support service:**

Bech Building Office A4/017 • L-2920 Luxembourg • Tel. (352) 4301 33408 • Fax (352) 4301 35349 •

E-mail: [eurostat-mediasupport@cec.eu.int](mailto:eurostat-mediasupport@cec.eu.int)

---

### **European Statistical Data Support:**

Eurostat set up with the members of the 'European statistical system' a network of support centres, which will exist in nearly all Member States as well as in some EFTA countries.

Their mission is to provide help and guidance to Internet users of European statistical data.

The complete details concerning this support network can be found on our Internet site: [www.europa.eu.int/comm/eurostat/](http://www.europa.eu.int/comm/eurostat/)

---

A list of worldwide sales outlets is available at the:

**Office for Official Publications of the European Communities.**

2, rue Mercier – L-2985 Luxembourg

URL: <http://publications.eu.int>

E-mail: [info-info-opoce@cec.eu.int](mailto:info-info-opoce@cec.eu.int)

BELGIEN/BELGIQUE/BELGIË - DANMARK - DEUTSCHLAND - EESTI – ELLÁDA - ESPAÑA - FRANCE - IRELAND - ITALIA - KYPROS/KIBRIS – LUXEMBOURG - MAGYARORSZÁG – MALTA - NEDERLAND - ÖSTERREICH - POLSKA - PORTUGAL - SLOVENIJA - SLOVENSKO - SUOMI/FINLAND - SVERIGE - UNITED KINGDOM - BALGARIJA - HRVATSKA - ÍSLAND – NORGE - SCHWEIZ/SUISSE/SVIZZERA - AUSTRALIA - BRASIL - CANADA - EGYPT - MALAYSIA - MÉXICO - SOUTH KOREA - SRI LANKA - T'AI-WAN -UNITED STATES OF AMERICA

---

ORIGINAL TEXT: English