

Inhalt

| | |
|-----------------------------|---|
| Indezahlen..... | 2 |
| Veränderungsraten..... | 4 |
| COICOP/HVPI Hauptgruppen... | 6 |
| Methodik..... | 7 |



Harmonisierte Verbraucherpreisindizes Juni 2004

Die jährliche Inflationsrate der **Eurozone***, gemessen anhand des Verbraucherpreisindex der Europäischen Währungsunion (VPI-EWU), fiel von 2,5% im Mai auf 2,4% im Juni 2004. Ein Jahr zuvor lag die entsprechende Rate bei 1,9%.

Die Inflationsrate der **EU**, gemessen anhand des Europäischen Verbraucherpreisindex (EVPI)**, blieb zwischen Mai und Juni 2004 unverändert bei 2,3%. Ein Jahr zuvor lag die entsprechende Rate bei 1,8%.

Die jährliche Inflationsrate für den Europäischen Wirtschaftsraum (**EWR**), gemessen anhand des Verbraucherpreisindex des Europäischen Wirtschaftsraums (EWRVPI), lag bei 2,3% im Juni 2004.

Die EU-Mitgliedstaaten mit den stärksten Preissteigerungen waren im Juni 2004 **Slowakei** (8,1%), **Ungarn** (7,5%), **Lettland** (6,1%) und **Estland** (4,4%), hingegen gab es die niedrigsten Inflationsraten in **Finnland** (-0,1%), **Dänemark** (0,9%), **Litauen** (1,0%) und **Schweden** (1,2%).

Für den **USA***** und **Japan***** lagen zum Zeitpunkt der Veröffentlichung keine Juni Daten vor.

Die folgende Graphik zeigt die jährlichen Inflationsraten für die **Eurozone**, die **EU** sowie für die **USA***** und für **Japan*****.

Methodologische Anmerkungen sind über die Eurostat-Internetadresse http://europa.eu.int/comm/eurostat/Public/datashop/print-catalogue/DE?catalogue=Eurostat&product=KS-BE-04-001-__-N-DE verfügbar.

* Die Eurozone besteht aus: Belgien, Deutschland, Griechenland, Spanien, Frankreich, Irland, Italien, Luxemburg, den Niederlanden, Österreich, Portugal und Finnland.

** Der EVPI (EVPI = Europäischer Verbraucherpreisindex nach der Verordnung des Rates (EG) Nr. 2494/95 vom 23. Oktober 1995) ist das offizielle Aggregat der EU. Er erfasst 15 Mitgliedstaaten bis April 2004 und 25 Mitgliedstaaten ab Mai 2004. Die neuen Mitgliedstaaten werden ab Mai 2004 anhand einer Kettenindexformel in den EVPI integriert. So wird beispielsweise mit der jährlichen Veränderungsrate im Juni 2004 die Veränderung für den Zeitraum Juni 2003 bis April 2004 für die 15 alten Mitgliedstaaten verknüpft mit der Veränderung für den Zeitraum April 2004 bis Juni 2004 für die 25 Mitgliedstaaten angegeben.

*** Für die USA und Japan werden die nationalen VPIs ausgewiesen, die nicht direkt mit den HVPIs vergleichbar sind.

Jährliche Veränderungsrate (%)

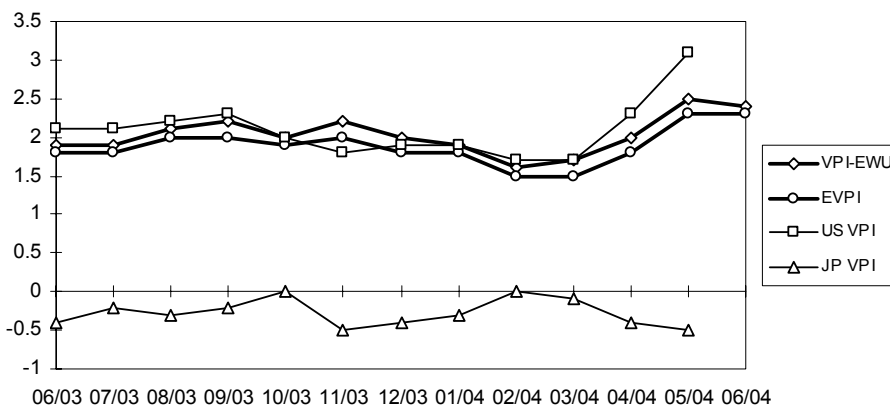


TABELLE I
HARMONISierter VERBRAUCHERPREISINDEX
INDEXZAHLEN 1996 = 100

| | Euro- zone | EU15/EU25 (EVPI) | BE | CZ | DK | DE | EE | EL | ES | FR | IE | IT | CY |
|---------------------------------|---------------|---------------------|-------|-------|-------|-------|-------|-------|-------|---------|-------|-------|-------|
| Jahresdurchschnittsindex | | | | | | | | | | | | | |
| 2001 | 108.5 | 108.6 | 109.0 | 131.1 | 110.7 | 106.2 | 134.6 | 120.1 | 112.8 | 106.3 | 116.0 | 110.9 | 114.3 |
| 2002 | 110.9 | 110.8 | 110.7 | 133.0 | 113.4 | 107.6 | 139.4 | 124.8 | 116.8 | 108.3 | 121.5 | 113.8 | 117.5 |
| 2003 | 113.2 | 113.0 | 112.3 | 132.9 | 115.6 | 108.8 | 141.4 | 129.0 | 120.5 | 110.7 | 126.3 | 117.0 | 122.2 |
| Monatlicher Index - 2002 | | | | | | | | | | | | | |
| Jan | 109.6 | 109.5 | 108.7 | 133.5 | 111.6 | 107.2 | 137.6 | 122.4 | 114.2 | 107.3 | 118.3 | 112.0 | 114.4 |
| Feb | 109.8 | 109.7 | 110.5 | 133.6 | 112.1 | 107.5 | 138.4 | 121.0 | 114.3 | 107.4 | 119.0 | 111.8 | 114.2 |
| Mär | 110.4 | 110.3 | 110.7 | 133.6 | 113.0 | 107.7 | 138.8 | 124.5 | 115.3 | 107.8 | 120.1 | 112.8 | 115.1 |
| Apr | 110.9 | 110.8 | 110.8 | 133.6 | 113.4 | 107.6 | 140.0 | 125.5 | 116.9 | 108.3 | 121.0 | 113.6 | 116.8 |
| Mai | 111.1 | 111.0 | 111.0 | 133.4 | 113.5 | 107.7 | 140.3 | 125.8 | 117.3 | 108.4 | 121.7 | 113.9 | 117.2 |
| Jun | 111.1 | 111.0 | 110.7 | 133.1 | 113.6 | 107.6 | 140.2 | 125.5 | 117.3 | 108.4 | 121.9 | 114.0 | 118.0 |
| Jul | 111.0 | 110.8 | 109.6 | 133.4 | 113.2 | 108.0 | 139.7 | 123.0 | 116.5 | 108.3 | 121.3 | 113.9 | 117.2 |
| Aug | 111.0 | 110.9 | 111.2 | 133.1 | 113.4 | 107.8 | 139.1 | 123.2 | 116.9 | 108.5 | 122.0 | 113.7 | 118.1 |
| Sep | 111.3 | 111.2 | 111.3 | 132.4 | 114.1 | 107.6 | 139.3 | 125.8 | 117.3 | 108.7 | 122.4 | 114.3 | 119.5 |
| Okt | 111.6 | 111.5 | 111.2 | 132.0 | 114.4 | 107.5 | 140.0 | 126.4 | 118.4 | 108.9 | 122.9 | 114.9 | 120.0 |
| Nov | 111.5 | 111.4 | 111.0 | 131.8 | 114.3 | 107.1 | 139.9 | 126.5 | 118.6 | 108.8 | 123.0 | 115.2 | 119.7 |
| Dez | 112.0 | 111.9 | 111.1 | 131.9 | 114.3 | 108.3 | 139.7 | 127.4 | 119.0 | 109.0 | 123.9 | 115.5 | 120.2 |
| Monatlicher Index - 2003 | | | | | | | | | | | | | |
| Jan | 111.9 | 111.7 | 110.0 | 132.6 | 114.5 | 108.2 | 141.1 | 126.4 | 118.5 | 109.3 | 123.9 | 115.2 | 119.5 |
| Feb | 112.4 | 112.2 | 112.3 | 132.8 | 115.3 | 108.8 | 141.5 | 126.1 | 118.7 | 110.1 | 125.1 | 114.7 | 119.7 |
| Mär | 113.1 | 112.8 | 112.6 | 132.8 | 116.2 | 109.0 | 141.8 | 129.3 | 119.6 | 110.6 | 126.0 | 116.1 | 122.4 |
| Apr | 113.2 | 113.0 | 112.4 | 133.0 | 116.2 | 108.7 | 141.6 | 129.6 | 120.6 | 110.4 | 126.6 | 117.0 | 123.3 |
| Mai | 113.1 | 112.9 | 112.0 | 133.0 | 115.9 | 108.4 | 141.3 | 130.2 | 120.5 | 110.3 | 126.4 | 117.2 | 123.0 |
| Jun | 113.2 | 112.9 | 112.4 | 133.1 | 115.9 | 108.6 | 140.8 | 130.0 | 120.6 | 110.5 | 126.5 | 117.3 | 122.4 |
| Jul | 113.1 | 112.8 | 111.1 | 133.0 | 115.2 | 108.9 | 141.0 | 127.3 | 119.9 | 110.4 | 126.0 | 117.2 | 120.2 |
| Aug | 113.3 | 113.1 | 113.0 | 132.9 | 115.1 | 109.0 | 141.0 | 127.3 | 120.5 | 110.7 | 126.8 | 116.8 | 120.9 |
| Sep | 113.7 | 113.5 | 113.2 | 132.4 | 116.0 | 108.8 | 141.4 | 129.9 | 120.8 | 111.2 | 127.0 | 117.7 | 123.4 |
| Okt | 113.8 | 113.6 | 112.8 | 132.6 | 115.7 | 108.7 | 141.7 | 130.4 | 121.6 | 111.4 | 127.0 | 118.1 | 124.4 |
| Nov | 113.9 | 113.6 | 113.0 | 133.0 | 115.9 | 108.5 | 141.6 | 130.6 | 122.0 | 111.5 | 127.0 | 118.4 | 124.2 |
| Dez | 114.2 | 113.9 | 113.0 | 133.2 | 115.7 | 109.5 | 141.4 | 131.4 | 122.2 | 111.6 | 127.5 | 118.4 | 122.9 |
| Monatlicher Index - 2004 | | | | | | | | | | | | | |
| Jan | 114.0 | 113.7 | 111.5 | 135.3 | 115.6 | 109.5 | 142.0 | 130.3 | 121.2 | 111.7 | 126.7 | 117.7 | 121.4 |
| Feb | 114.2 | 113.9 | 113.6 | 135.4 | 116.1 | 109.7 | 142.3 | 129.4 | 121.3 | 112.2 | 127.8 | 117.5 | 121.4 |
| Mär | 115.0 | 114.6 | 113.7 | 135.6 | 116.7 | 110.2 | 142.8 | 133.1 | 122.2 | 112.7 | 128.3 | 118.8 | 122.5 |
| Apr | 115.5 | 115.0 | 114.3 | 135.7 | 116.8 | 110.5 | 143.7 | 133.6 | 123.9 | 113.0 | 128.7 | 119.7 | 123.4 |
| Mai | 115.9 | 115.5 | 114.7 | 136.5 | 117.2 | 110.7 | 146.5 | 134.2 | 124.6 | 113.4 | 129.0 | 119.9 | 124.5 |
| Jun | 115.9\$ | 115.5\$ | 114.6 | 136.7 | 116.9 | 110.7 | 147.0 | 133.9 | 124.8 | 113.5\$ | 129.7 | 120.1 | 125.3 |
| Jul | | | | | | | | | | | | | |
| Aug | | | | | | | | | | | | | |
| Sep | | | | | | | | | | | | | |
| Okt | | | | | | | | | | | | | |
| Nov | | | | | | | | | | | | | |
| Dez | | | | | | | | | | | | | |

* geschätzt \$ vorläufig # revidiert : nicht verfügbar

TABELLE I
HARMONISIERTER VERBRAUCHERPREISINDEX
1996 = 100
INDEXZAHLEN

| LV | LT | LU | HU | MT | NL | AT | PL | PT | SI | SK | FI | SE | UK | |
|---------------------------------|-------|-------|-------|---------|---------|---------|-------|-------|-------|-------|-------|-------|-------|-------------|
| Jahresdurchschnittsindex | | | | | | | | | | | | | | |
| 121.1 | 117.6 | 109.9 | 178.5 | 116.4 | 113.8 | 106.9 | 159.7 | 114.2 | 146.8 | 150.2 | 109.8 | 107.6 | 106.9 | 2001 |
| 123.5 | 118.1 | 112.1 | 187.8 | 120.1\$ | 118.2 | 108.8 | 162.8 | 118.4 | 157.7 | 155.5 | 112.0 | 109.7 | 108.3 | 2002 |
| 127.1 | 116.9 | 115.0 | 196.6 | 123.3\$ | 120.8 | 110.2 | 164.0 | 122.3 | 166.7 | 168.6 | 113.5 | 112.3 | 109.8 | 2003 |
| Monatlicher Index - 2002 | | | | | | | | | | | | | | |
| 123.6 | 119.8 | 109.6 | 183.5 | 116.7 | 116.1 | 107.9 | 162.7 | 116.1 | 152.5 | 154.3 | 110.9 | 108.2 | 107.1 | Jan |
| 123.2 | 119.6 | 110.9 | 185.2 | 115.7 | 116.7 | 108.0 | 162.9 | 115.9 | 153.7 | 154.8 | 111.2 | 108.5 | 107.3 | Feb |
| 123.8 | 118.9 | 111.0 | 186.6 | 116.2 | 117.9 | 108.2 | 163.3 | 116.4 | 154.9 | 154.8 | 111.8 | 109.6 | 107.7 | Mär |
| 123.9 | 118.8 | 111.6 | 188.2 | 119.9 | 118.7 | 108.7 | 164.2 | 117.4 | 157.2 | 155.4 | 112.3 | 109.9 | 108.1 | Apr |
| 124.1 | 118.5 | 112.1 | 189.1 | 120.7 | 118.5 | 108.9 | 163.8 | 118.3 | 157.8 | 155.5 | 112.5 | 110.1 | 108.4 | Mai |
| 123.4 | 118.1 | 112.4 | 188.2 | 120.7 | 118.1 | 108.8 | 163.1 | 118.7 | 157.6 | 154.9 | 112.3 | 109.9 | 108.4 | Jun |
| 123.0 | 117.7 | 111.7 | 188.0 | 121.9 | 118.0 | 108.7 | 162.2 | 119.0 | 158.8 | 154.6 | 111.9 | 109.3 | 108.1 | Jul |
| 122.0 | 117.1 | 112.6 | 187.4 | 121.9 | 118.2 | 109.0 | 161.6 | 119.2 | 159.1 | 155.6 | 111.9 | 109.4 | 108.4 | Aug |
| 122.9 | 116.5 | 113.0 | 188.7 | 121.7 | 119.4 | 108.9 | 162.2 | 119.1 | 159.8 | 156.2 | 112.4 | 110.2 | 108.7 | Sep |
| 123.8 | 117.2 | 113.5 | 189.7 | 121.9\$ | 119.3 | 109.2 | 162.7 | 119.8 | 160.2 | 156.3 | 112.7 | 110.6 | 108.9 | Okt |
| 124.0 | 117.3 | 113.7 | 189.6 | 122.0\$ | 118.7 | 109.2 | 162.5 | 120.5 | 160.0 | 156.4 | 112.3 | 110.3 | 108.9 | Nov |
| 124.3 | 117.7 | 113.5 | 189.8 | 122.0\$ | 118.5 | 109.5 | 162.7 | 120.6 | 160.8 | 156.9 | 112.3 | 110.7 | 109.3 | Dez |
| Monatlicher Index - 2003 | | | | | | | | | | | | | | |
| 125.4 | 117.6 | 113.2 | 192.3 | 120.7\$ | 119.2 | 109.7 | 163.3 | 120.7 | 162.7 | 165.3 | 112.5 | 111.0 | 108.6 | Jan |
| 125.8 | 117.4 | 114.5 | 193.8 | 121.1\$ | 120.1 | 109.9 | 163.5 | 120.7 | 163.6 | 166.2 | 113.5 | 112.1 | 109.0 | Feb |
| 126.5 | 117.7 | 115.1 | 195.5 | 122.2\$ | 121.2 | 110.2 | 164.0 | 120.8 | 164.7 | 167.3 | 113.9 | 112.8 | 109.4 | Mär |
| 126.9 | 117.8 | 114.9 | 195.5 | 123.1\$ | 121.3 | 110.1 | 164.3 | 121.8 | 165.7 | 167.4 | 113.8 | 112.4 | 109.7 | Apr |
| 127.2 | 117.6 | 114.7 | 195.7 | 123.9\$ | 121.2 | 109.9 | 164.3 | 122.7 | 166.6 | 167.4 | 113.7 | 112.3 | 109.7 | Mai |
| 128.0 | 117.7 | 114.7 | 196.4 | 124.1\$ | 120.6 | 109.9 | 164.1 | 122.7 | 167.4 | 167.9 | 113.6 | 112.1 | 109.6 | Jun |
| 127.6 | 116.8 | 113.8 | 196.9 | 124.7\$ | 120.5 | 109.8 | 163.3 | 122.5 | 168.5 | 167.8 | 113.0 | 111.9 | 109.5 | Jul |
| 126.2 | 116.0 | 115.2 | 196.3 | 124.8\$ | 120.8 | 110.1 | 162.6 | 122.6 | 168.1 | 169.6 | 113.2 | 111.8 | 109.9 | Aug |
| 126.8 | 115.6 | 116.0 | 197.4 | 124.6\$ | 121.8 | 110.4 | 163.4 | 122.9 | 167.9 | 170.7 | 113.8 | 112.7 | 110.2 | Sep |
| 127.9 | 115.7 | 115.5 | 198.9 | 125.4\$ | 121.6 | 110.4 | 164.4 | 123.2 | 168.1 | 171.1 | 113.7 | 112.8 | 110.4 | Okt |
| 128.6 | 116.2 | 116.0 | 200.2 | 121.6\$ | 121.1 | 110.6 | 165.0 | 123.3 | 168.4 | 171.3 | 113.6 | 112.5 | 110.3 | Nov |
| 128.7 | 116.2 | 116.2 | 200.5 | 122.8\$ | 120.4 | 110.9 | 165.3 | 123.4 | 168.4 | 171.5 | 113.7 | 112.7 | 110.7 | Dez |
| Monatlicher Index - 2004 | | | | | | | | | | | | | | |
| 130.4 | 116.2 | 115.8 | 205.1 | 122.2\$ | 121.0 | 111.0 | 166.2 | 123.4 | 169.2 | 178.9 | 113.4 | 112.4 | 110.1 | Jan |
| 131.2 | 116.0 | 117.3 | 207.4 | 122.2\$ | 121.7 | 111.5 | 166.4 | 123.2 | 169.5 | 180.1 | 113.9 | 112.3 | 110.4 | Feb |
| 132.5 | 116.6 | 117.4 | 208.5 | 122.8\$ | 122.7 | 111.9 | 167.0 | 123.5 | 170.5 | 180.5 | 113.4 | 113.3 | 110.6 | Mär |
| 133.3 | 117.0 | 118.0 | 209.1 | 127.5\$ | 123.1 | 111.8 | 168.1 | 124.7 | 171.6 | 180.5 | 113.4 | 113.6 | 111.0 | Apr |
| 135.0 | 118.8 | 118.6 | 211.0 | 127.6\$ | 123.3 | 112.2 | 170.0 | 125.7 | 173.1 | 181.1 | 113.6 | 114.0 | 111.4 | Mai |
| 135.8 | 118.9 | 119.1 | 211.1 | 128.2\$ | 122.4\$ | 112.4\$ | 171.2 | 127.2 | 173.9 | 181.5 | 113.5 | 113.4 | 111.3 | Jun |
| | | | | | | | | | | | | | | Jul |
| | | | | | | | | | | | | | | Aug |
| | | | | | | | | | | | | | | Sep |
| | | | | | | | | | | | | | | Okt |
| | | | | | | | | | | | | | | Nov |
| | | | | | | | | | | | | | | Dez |

* geschätzt \$ vorläufig # revidiert : nicht verfügbar

TABELLE II
HARMONISIERTER VERBRAUCHERPREISINDEX
 VERÄNDERUNGSRATEN (%)

| | Euro- zone | EU15/EU25 (EVPI) | BE | CZ | DK | DE | EE | EL | ES | FR | IE | IT | CY |
|---|---------------|---------------------|-----|------|-----|-----|-----|-----|-----|-------|-----|-----|-----|
| Jährliche Veränderungsrate des Jahresdurchschnitts | | | | | | | | | | | | | |
| 2001/12 | 2.3 | 2.2 | 2.4 | 4.5 | 2.3 | 1.9 | 5.6 | 3.7 | 2.8 | 1.8 | 4.0 | 2.3 | 2.0 |
| 2002/12 | 2.3 | 2.1 | 1.6 | 1.4 | 2.4 | 1.3 | 3.6 | 3.9 | 3.6 | 1.9 | 4.7 | 2.6 | 2.8 |
| 2003/12 | 2.1 | 2.0 | 1.5 | -0.1 | 2.0 | 1.0 | 1.4 | 3.4 | 3.1 | 2.2 | 4.0 | 2.8 | 4.0 |
| 2004/6 | 2.0\$ | 1.9\$ | 1.6 | 1.3 | 1.1 | 1.3 | 1.6 | 3.1 | 2.8 | 2.3\$ | 2.8 | 2.5 | 2.0 |
| Jährliche Veränderungsrate - 2002 | | | | | | | | | | | | | |
| Jan | 2.6 | 2.5 | 2.6 | 3.4 | 2.5 | 2.2 | 4.2 | 4.8 | 3.1 | 2.5 | 5.2 | 2.3 | 2.2 |
| Feb | 2.5 | 2.4 | 2.5 | 3.4 | 2.4 | 1.8 | 4.5 | 3.8 | 3.2 | 2.3 | 4.9 | 2.7 | 2.3 |
| Mär | 2.5 | 2.3 | 2.5 | 3.3 | 2.5 | 2.0 | 4.4 | 4.4 | 3.2 | 2.2 | 5.1 | 2.5 | 2.0 |
| Apr | 2.3 | 2.1 | 1.7 | 2.9 | 2.3 | 1.5 | 4.6 | 4.1 | 3.7 | 2.1 | 5.0 | 2.5 | 2.4 |
| Mai | 2.0 | 1.8 | 1.4 | 2.1 | 1.9 | 1.1 | 4.2 | 3.8 | 3.7 | 1.5 | 5.0 | 2.4 | 2.3 |
| Jun | 1.9 | 1.7 | 0.8 | 0.9 | 2.2 | 0.8 | 3.9 | 3.6 | 3.4 | 1.5 | 4.5 | 2.2 | 2.1 |
| Jul | 2.0 | 1.9 | 1.1 | 0.2 | 2.2 | 1.0 | 3.3 | 3.6 | 3.5 | 1.6 | 4.2 | 2.4 | 3.8 |
| Aug | 2.1 | 1.9 | 1.3 | 0.2 | 2.4 | 1.1 | 2.7 | 3.8 | 3.7 | 1.8 | 4.5 | 2.6 | 4.1 |
| Sep | 2.1 | 1.9 | 1.2 | 0.4 | 2.5 | 1.0 | 2.7 | 3.8 | 3.5 | 1.8 | 4.5 | 2.8 | 3.5 |
| Okt | 2.3 | 2.1 | 1.3 | 0.2 | 2.7 | 1.3 | 3.1 | 3.9 | 4.0 | 1.9 | 4.4 | 2.8 | 2.7 |
| Nov | 2.3 | 2.2 | 1.1 | 0.2 | 2.8 | 1.1 | 3.0 | 3.9 | 3.9 | 2.1 | 4.7 | 2.9 | 3.0 |
| Dez | 2.3 | 2.2 | 1.3 | 0.1 | 2.6 | 1.1 | 2.7 | 3.5 | 4.0 | 2.2 | 4.6 | 3.0 | 3.1 |
| Jährliche Veränderungsrate - 2003 | | | | | | | | | | | | | |
| Jan | 2.1 | 2.0 | 1.2 | -0.7 | 2.6 | 0.9 | 2.5 | 3.3 | 3.8 | 1.9 | 4.7 | 2.9 | 4.5 |
| Feb | 2.4 | 2.3 | 1.6 | -0.6 | 2.9 | 1.2 | 2.2 | 4.2 | 3.8 | 2.5 | 5.1 | 2.6 | 4.8 |
| Mär | 2.4 | 2.3 | 1.7 | -0.6 | 2.8 | 1.2 | 2.2 | 3.9 | 3.7 | 2.6 | 4.9 | 2.9 | 6.3 |
| Apr | 2.1 | 2.0 | 1.4 | -0.4 | 2.5 | 1.0 | 1.1 | 3.3 | 3.2 | 1.9 | 4.6 | 3.0 | 5.6 |
| Mai | 1.8 | 1.7 | 0.9 | -0.3 | 2.1 | 0.6 | 0.7 | 3.5 | 2.7 | 1.8 | 3.9 | 2.9 | 4.9 |
| Jun | 1.9 | 1.8 | 1.5 | 0.0 | 2.0 | 0.9 | 0.4 | 3.6 | 2.8 | 1.9 | 3.8 | 2.9 | 3.7 |
| Jul | 1.9 | 1.8 | 1.4 | -0.3 | 1.8 | 0.8 | 0.9 | 3.5 | 2.9 | 1.9 | 3.9 | 2.9 | 2.6 |
| Aug | 2.1 | 2.0 | 1.6 | -0.2 | 1.5 | 1.1 | 1.4 | 3.3 | 3.1 | 2.0 | 3.9 | 2.7 | 2.4 |
| Sep | 2.2 | 2.0 | 1.7 | 0.0 | 1.7 | 1.1 | 1.5 | 3.3 | 3.0 | 2.3 | 3.8 | 3.0 | 3.3 |
| Okt | 2.0 | 1.9 | 1.4 | 0.5 | 1.1 | 1.1 | 1.2 | 3.2 | 2.7 | 2.3 | 3.3 | 2.8 | 3.7 |
| Nov | 2.2 | 2.0 | 1.8 | 0.9 | 1.4 | 1.3 | 1.2 | 3.2 | 2.9 | 2.5 | 3.3 | 2.8 | 3.8 |
| Dez | 2.0 | 1.8 | 1.7 | 1.0 | 1.2 | 1.1 | 1.2 | 3.1 | 2.7 | 2.4 | 2.9 | 2.5 | 2.2 |
| Jährliche Veränderungsrate - 2004 | | | | | | | | | | | | | |
| Jan | 1.9 | 1.8 | 1.4 | 2.0 | 1.0 | 1.2 | 0.6 | 3.1 | 2.3 | 2.2 | 2.3 | 2.2 | 1.6 |
| Feb | 1.6 | 1.5 | 1.2 | 2.0 | 0.7 | 0.8 | 0.6 | 2.6 | 2.2 | 1.9 | 2.2 | 2.4 | 1.4 |
| Mär | 1.7 | 1.5 | 1.0 | 2.1 | 0.4 | 1.1 | 0.7 | 2.9 | 2.2 | 1.9 | 1.8 | 2.3 | 0.1 |
| Apr | 2.0 | 1.8 | 1.7 | 2.0 | 0.5 | 1.7 | 1.5 | 3.1 | 2.7 | 2.4 | 1.7 | 2.3 | 0.1 |
| Mai | 2.5 | 2.3 | 2.4 | 2.6 | 1.1 | 2.1 | 3.7 | 3.1 | 3.4 | 2.8 | 2.1 | 2.3 | 1.2 |
| Jun | 2.4\$ | 2.3\$ | 2.0 | 2.7 | 0.9 | 1.9 | 4.4 | 3.0 | 3.5 | 2.7\$ | 2.5 | 2.4 | 2.4 |
| Jul | | | | | | | | | | | | | |
| Aug | | | | | | | | | | | | | |
| Sep | | | | | | | | | | | | | |
| Okt | | | | | | | | | | | | | |
| Nov | | | | | | | | | | | | | |
| Dez | | | | | | | | | | | | | |

* geschätzt \$ vorläufig # revidiert : nicht verfügbar

TABELLE II
HARMONISIERTER VERBRAUCHERPREISINDEX
VERÄNDERUNGSRATEN (%)

| LV | LT | LU | HU | MT | NL | AT | PL | PT | SI | SK | FI | SE | UK | |
|---|------|-----|-----|--------|-------|-------|-----|-----|-----|-----|------|-----|-----|---------|
| Jährliche Veränderungsrate des Jahresdurchschnitts | | | | | | | | | | | | | | |
| 2.5 | 1.3 | 2.4 | 9.1 | 2.5 | 5.1 | 2.3 | 5.3 | 4.4 | 8.6 | 7.2 | 2.7 | 2.7 | 1.2 | 2001/12 |
| 2.0 | 0.4 | 2.1 | 5.2 | 3.1\$ | 3.9 | 1.7 | 1.9 | 3.7 | 7.5 | 3.5 | 2.0 | 2.0 | 1.3 | 2002/12 |
| 2.9 | -1.1 | 2.5 | 4.7 | 2.6\$ | 2.2 | 1.3 | 0.7 | 3.3 | 5.7 | 8.5 | 1.3 | 2.3 | 1.4 | 2003/12 |
| 4.3 | -0.7 | 2.5 | 6.1 | 1.9\$ | 1.7\$ | 1.4\$ | 1.8 | 2.6 | 4.5 | 8.6 | 0.6 | 1.5 | 1.3 | 2004/6 |
| Jährliche Veränderungsrate - 2002 | | | | | | | | | | | | | | |
| 3.4 | 3.3 | 2.1 | 6.6 | 4.3 | 4.9 | 2.0 | 3.6 | 3.7 | 8.4 | 6.5 | 2.9 | 2.9 | 1.6 | Jan |
| 3.3 | 2.9 | 2.2 | 6.1 | 3.2 | 4.5 | 1.7 | 3.6 | 3.3 | 7.9 | 4.5 | 2.5 | 2.7 | 1.5 | Feb |
| 3.3 | 1.8 | 1.7 | 6.0 | 3.1 | 4.3 | 1.7 | 3.3 | 3.3 | 7.5 | 3.8 | 2.6 | 3.0 | 1.5 | Mär |
| 2.9 | 1.5 | 1.9 | 6.0 | 2.7 | 4.2 | 1.7 | 3.0 | 3.5 | 8.4 | 3.7 | 2.6 | 2.2 | 1.3 | Apr |
| 2.1 | 0.7 | 1.3 | 5.5 | 2.4 | 3.8 | 1.7 | 1.5 | 3.4 | 7.6 | 3.3 | 1.8 | 1.7 | 0.8 | Mai |
| 0.9 | -0.3 | 1.3 | 4.8 | 2.2 | 3.8 | 1.5 | 1.2 | 3.5 | 6.9 | 2.8 | 1.5 | 1.7 | 0.6 | Jun |
| 1.1 | 0.3 | 1.9 | 4.5 | 2.3 | 3.8 | 1.5 | 1.3 | 3.6 | 7.5 | 2.2 | 2.0 | 1.8 | 1.1 | Jul |
| 0.9 | -0.9 | 2.0 | 4.4 | 2.3 | 3.7 | 2.1 | 1.4 | 3.9 | 7.6 | 3.0 | 1.8 | 1.7 | 1.0 | Aug |
| 1.0 | -1.3 | 2.2 | 4.6 | 2.2 | 3.6 | 1.6 | 1.4 | 3.8 | 7.2 | 3.2 | 1.4 | 1.2 | 1.0 | Sep |
| 1.6 | -0.9 | 2.5 | 4.9 | 3.0\$ | 3.5 | 1.7 | 1.2 | 4.1 | 7.0 | 3.2 | 1.7 | 1.7 | 1.4 | Okt |
| 1.6 | -0.8 | 2.7 | 4.8 | 5.4\$ | 3.2 | 1.7 | 1.0 | 4.1 | 6.5 | 3.0 | 1.7 | 1.4 | 1.6 | Nov |
| 1.5 | -0.9 | 2.8 | 4.9 | 4.9\$ | 3.2 | 1.7 | 0.8 | 4.0 | 7.1 | 3.2 | 1.7 | 1.7 | 1.7 | Dez |
| Jährliche Veränderungsrate - 2003 | | | | | | | | | | | | | | |
| 1.5 | -1.8 | 3.3 | 4.8 | 3.4\$ | 2.7 | 1.7 | 0.4 | 4.0 | 6.7 | 7.1 | 1.4 | 2.6 | 1.4 | Jan |
| 2.1 | -1.8 | 3.2 | 4.6 | 4.7\$ | 2.9 | 1.8 | 0.4 | 4.1 | 6.4 | 7.4 | 2.1 | 3.3 | 1.6 | Feb |
| 2.2 | -1.0 | 3.7 | 4.8 | 5.2\$ | 2.8 | 1.8 | 0.4 | 3.8 | 6.3 | 8.1 | 1.9 | 2.9 | 1.6 | Mär |
| 2.4 | -0.8 | 3.0 | 3.9 | 2.7\$ | 2.2 | 1.3 | 0.1 | 3.7 | 5.4 | 7.7 | 1.3 | 2.3 | 1.5 | Apr |
| 2.5 | -0.8 | 2.3 | 3.5 | 2.7\$ | 2.3 | 0.9 | 0.3 | 3.7 | 5.6 | 7.7 | 1.1 | 2.0 | 1.2 | Mai |
| 3.7 | -0.3 | 2.0 | 4.4 | 2.8\$ | 2.1 | 1.0 | 0.6 | 3.4 | 6.2 | 8.4 | 1.2 | 2.0 | 1.1 | Jun |
| 3.7 | -0.8 | 1.9 | 4.7 | 2.3\$ | 2.1 | 1.0 | 0.7 | 2.9 | 6.1 | 8.5 | 1.0 | 2.4 | 1.3 | Jul |
| 3.4 | -0.9 | 2.3 | 4.7 | 2.4\$ | 2.2 | 1.0 | 0.6 | 2.9 | 5.7 | 9.0 | 1.2 | 2.2 | 1.4 | Aug |
| 3.2 | -0.8 | 2.7 | 4.6 | 2.4\$ | 2.0 | 1.4 | 0.7 | 3.2 | 5.1 | 9.3 | 1.2 | 2.3 | 1.4 | Sep |
| 3.3 | -1.3 | 1.8 | 4.8 | 2.9\$ | 1.9 | 1.1 | 1.0 | 2.8 | 4.9 | 9.5 | 0.9 | 2.0 | 1.4 | Okt |
| 3.7 | -0.9 | 2.0 | 5.6 | -0.3\$ | 2.0 | 1.3 | 1.5 | 2.3 | 5.3 | 9.5 | 1.2 | 2.0 | 1.3 | Nov |
| 3.5 | -1.3 | 2.4 | 5.6 | 0.7\$ | 1.6 | 1.3 | 1.6 | 2.3 | 4.7 | 9.3 | 1.2 | 1.8 | 1.3 | Dez |
| Jährliche Veränderungsrate - 2004 | | | | | | | | | | | | | | |
| 4.0 | -1.2 | 2.3 | 6.7 | 1.2\$ | 1.5 | 1.2 | 1.8 | 2.2 | 4.0 | 8.2 | 0.8 | 1.3 | 1.4 | Jan |
| 4.3 | -1.2 | 2.4 | 7.0 | 0.9\$ | 1.3 | 1.5 | 1.8 | 2.1 | 3.6 | 8.4 | 0.4 | 0.2 | 1.3 | Feb |
| 4.7 | -0.9 | 2.0 | 6.6 | 0.5\$ | 1.2 | 1.5 | 1.8 | 2.2 | 3.5 | 7.9 | -0.4 | 0.4 | 1.1 | Mär |
| 5.0 | -0.7 | 2.7 | 7.0 | 3.6\$ | 1.5 | 1.5 | 2.3 | 2.4 | 3.6 | 7.8 | -0.4 | 1.1 | 1.2 | Apr |
| 6.1 | 1.0 | 3.4 | 7.8 | 3.0\$ | 1.7 | 2.1 | 3.5 | 2.4 | 3.9 | 8.2 | -0.1 | 1.5 | 1.5 | Mai |
| 6.1 | 1.0 | 3.8 | 7.5 | 3.3\$ | 1.5\$ | 2.3\$ | 4.3 | 3.7 | 3.9 | 8.1 | -0.1 | 1.2 | 1.6 | Jun |
| | | | | | | | | | | | | | | Jul |
| | | | | | | | | | | | | | | Aug |
| | | | | | | | | | | | | | | Sep |
| | | | | | | | | | | | | | | Okt |
| | | | | | | | | | | | | | | Nov |
| | | | | | | | | | | | | | | Dez |

* geschätzt \$ vorläufig # revidiert : nicht verfügbar

TABELLE III
HARMONISIERTER
VERBRAUCHERPREISINDEX
INDEXZAHLEN

| | EWR | IS | NO | CH** |
|---------------------------------|---------|-------|-------|-------|
| Jahresdurchschnittsindex | | | | |
| 2001 | 108.6 | 117.3 | 113.0 | 103.8 |
| 2002 | 110.9 | 123.5 | 113.9 | 104.5 |
| 2003 | 113.0 | 125.2 | 116.2 | 105.2 |
| Monatlicher Index - 2002 | | | | |
| Jan | 109.5 | 122.9 | 112.9 | 104.1 |
| Feb | 109.8 | 122.6 | 113.3 | 104.1 |
| Mär | 110.3 | 123.1 | 113.6 | 104.1 |
| Apr | 110.8 | 123.0 | 113.6 | 105.0 |
| Mai | 111.0 | 123.0 | 113.8 | 105.1 |
| Jun | 111.0 | 123.7 | 113.8 | 104.9 |
| Jul | 110.9 | 123.9 | 113.7 | 104.2 |
| Aug | 110.9 | 123.3 | 113.3 | 104.4 |
| Sep | 111.2 | 123.9 | 114.1 | 104.5 |
| Okt | 111.5 | 124.4 | 114.3 | 105.1 |
| Nov | 111.4 | 124.1 | 114.7 | 104.9 |
| Dez | 111.9 | 124.1 | 115.7 | 104.9 |
| Monatlicher Index - 2003 | | | | |
| Jan | 111.8 | 124.3 | 117.6 | 104.9 |
| Feb | 112.3 | 124.0 | 117.9 | 105.1 |
| Mär | 112.9 | 125.4 | 117.2 | 105.5 |
| Apr | 113.0 | 125.3 | 116.4 | 105.7 |
| Mai | 112.9 | 125.2 | 115.8 | 105.5 |
| Jun | 113.0 | 125.3 | 115.5 | 105.5 |
| Jul | 112.9 | 125.0 | 115.1 | 104.7 |
| Aug | 113.1 | 124.5 | 115.3 | 104.9 |
| Sep | 113.5 | 125.4 | 115.8 | 105.1 |
| Okt | 113.6 | 125.8 | 115.8 | 105.6 |
| Nov | 113.7 | 126.0 | 115.8 | 105.5 |
| Dez | 114.0 | 126.3 | 115.8 | 105.5 |
| Monatlicher Index - 2004 | | | | |
| Jan | 113.7 | 126.1 | 115.9 | 105.1 |
| Feb | 113.9 | 125.7 | 116.1 | 105.1 |
| Mär | 114.6 | 126.6 | 116.7 | 105.4 |
| Apr | 115.1 | 127.2 | 116.9 | 106.3 |
| Mai | 115.5 | 128.2 | 117.0 | 106.5 |
| Jun | 115.5\$ | 128.9 | 117.0 | 106.7 |
| Jul | | | | |
| Aug | | | | |
| Sep | | | | |
| Okt | | | | |
| Nov | | | | |
| Dez | | | | |

TABELLE IV
HARMONISIERTER
VERBRAUCHERPREISINDEX
VERÄNDERUNGSRATEN (%)

| | EWR | IS | NO | CH** | |
|---|-------|-----|------|------|---------|
| Jährliche Veränderungsrate des Jahresdurchschnitts | | | | | |
| | 2.2 | 6.6 | 2.7 | 0.9 | 2001/12 |
| | 2.1 | 5.3 | 0.8 | 0.6 | 2002/12 |
| | 2.0 | 1.4 | 2.0 | 0.6 | 2003/12 |
| | 1.9\$ | 1.5 | 0.5 | 0.5 | 2004/6 |
| Jährliche Veränderungsrate - 2002 | | | | | |
| | 2.4 | 9.8 | 0.9 | 0.5 | Jan |
| | 2.3 | 9.5 | 0.4 | 0.7 | Feb |
| | 2.3 | 9.1 | 0.4 | 0.5 | Mär |
| | 2.1 | 7.7 | -0.1 | 1.1 | Apr |
| | 1.8 | 6.0 | -0.4 | 0.6 | Mai |
| | 1.7 | 4.7 | -0.4 | 0.3 | Jun |
| | 1.9 | 4.0 | 1.2 | -0.1 | Jul |
| | 1.9 | 3.5 | 1.1 | 0.5 | Aug |
| | 1.9 | 3.2 | 1.2 | 0.5 | Sep |
| | 2.1 | 3.0 | 1.3 | 1.2 | Okt |
| | 2.2 | 2.3 | 1.8 | 0.9 | Nov |
| | 2.2 | 1.9 | 2.6 | 0.9 | Dez |
| Jährliche Veränderungsrate - 2003 | | | | | |
| | 2.0 | 1.1 | 4.2 | 0.8 | Jan |
| | 2.3 | 1.1 | 4.1 | 0.9 | Feb |
| | 2.3 | 1.9 | 3.2 | 1.3 | Mär |
| | 2.0 | 1.9 | 2.5 | 0.7 | Apr |
| | 1.7 | 1.8 | 1.8 | 0.4 | Mai |
| | 1.8 | 1.3 | 1.5 | 0.5 | Jun |
| | 1.8 | 0.9 | 1.2 | 0.3 | Jul |
| | 1.9 | 1.0 | 1.8 | 0.5 | Aug |
| | 2.0 | 1.2 | 1.5 | 0.5 | Sep |
| | 1.9 | 1.1 | 1.3 | 0.5 | Okt |
| | 2.0 | 1.5 | 1.0 | 0.5 | Nov |
| | 1.8 | 1.8 | 0.1 | 0.6 | Dez |
| Jährliche Veränderungsrate - 2004 | | | | | |
| | 1.7 | 1.4 | -1.4 | 0.2 | Jan |
| | 1.5 | 1.4 | -1.5 | 0.1 | Feb |
| | 1.5 | 1.0 | -0.4 | -0.1 | Mär |
| | 1.8 | 1.5 | 0.4 | 0.5 | Apr |
| | 2.3 | 2.4 | 1.0 | 0.9 | Mai |
| | 2.3\$ | 2.9 | 1.3 | 1.1 | Jun |
| | | | | | Jul |
| | | | | | Aug |
| | | | | | Sep |
| | | | | | Okt |
| | | | | | Nov |
| | | | | | Dez |

* geschätzt \$ vorläufig # revidiert : nicht verfügbar ** nationale VPI

HAUPTGRUPPEN DER HARMONISIERTEN VERBRAUCHERPREISINDIZES

Juni 2003 / Juni 2004

JÄHRLICHE VERÄNDERUNGSRATEN (%)

| | 00. | 01. | 02. | 03. | 04. | 05. | 06. | 07. | 08. | 09. | 10. | 11. | 12. |
|-------------------------|-------|--------|--------|--------|-------|--------|-------|-------|--------|--------|-------|-------|-------|
| Eurozone | 2.4\$ | 1.4\$ | 8.4\$ | 0.9\$ | 2.4\$ | 0.9\$ | 7.7\$ | 4.0\$ | -1.9\$ | -0.1\$ | 3.1\$ | 2.9\$ | 2.2\$ |
| EU15/EU25 (EVPI) | 2.3\$ | 1.5\$ | 6.8\$ | 0.0\$ | 2.7\$ | 0.8\$ | 7.1\$ | 4.1\$ | -1.5\$ | -0.3\$ | 3.6\$ | 3.0\$ | 2.6\$ |
| BE | 2.0 | 1.1 | 5.1 | 0.8 | 3.1 | 0.9 | 1.7 | 4.5 | 1.6 | -0.3 | 0.5 | 2.4 | 2.4 |
| CZ | 2.7 | 2.5 | 4.1 | -4.0 | 1.1 | -2.2 | 2.7 | 4.4 | 10.9 | 2.0 | 2.4 | 5.8 | 5.4 |
| DK | 0.9 | -1.1 | -6.9 | 0.9 | 2.1 | 2.8 | 2.0 | 3.9 | -3.1 | -1.3 | 2.8 | 2.6 | 2.6 |
| DE | 1.9 | -0.4 | 7.5 | -0.4 | 1.9 | -0.1 | 19.4 | 2.9 | -0.8 | -1.2 | 2.6 | 0.9 | 1.6 |
| EE | 4.4 | 5.5 | 2.0 | 0.2 | 4.3 | -0.9 | 8.1 | 11.9 | 0.9 | 0.5 | 2.0 | 3.4 | 3.6 |
| EL | 3.0 | -1.2 | 7.1 | 3.6 | 5.3 | 1.6 | 5.5 | 5.0 | -3.4 | 3.1 | 4.4 | 4.2 | 1.9 |
| ES | 3.5 | 4.6 | 6.1 | 2.1 | 3.5 | 1.5 | 0.2 | 6.0 | -0.8 | 0.4 | 3.9 | 4.0 | 2.7 |
| FR | 2.7\$ | 1.4\$ | 16.6\$ | 0.2\$ | 2.9\$ | 0.9\$ | 2.5\$ | 4.1\$ | 0.5\$ | -0.6\$ | 3.0\$ | 2.7\$ | 2.2\$ |
| IE | 2.5 | 0.0 | 3.6 | -2.7 | 3.8 | -1.4 | 5.8 | 5.4 | 2.0 | 1.2 | 6.0 | 3.6 | 2.1 |
| IT | 2.4 | 2.7 | 7.1 | 2.3 | 1.9 | 2.2 | 2.9 | 3.9 | -7.2 | 1.9 | 1.9 | 2.8 | 3.1 |
| CY | 2.4 | 5.4 | 9.2 | -1.4 | 4.3 | -1.4 | 4.8 | -0.8 | -12.9 | 1.6 | 3.7 | 4.7 | 4.4 |
| LV | 6.1 | 5.7 | 6.4 | 2.9 | 8.8 | 1.9 | 16.8 | 8.9 | -0.5 | 3.4 | 3.9 | 6.5 | 9.8 |
| LT | 1.0 | 1.1 | 2.9 | -1.2 | 1.3 | -3.1 | 9.2 | 7.8 | -14.0 | -2.7 | 1.0 | 0.9 | 6.1 |
| LU | 3.8 | 2.0 | 6.8 | 0.4 | 3.8 | 1.8 | 3.2 | 8.7 | -2.1 | 0.6 | 1.3 | 3.2 | 1.9 |
| HU | 7.5 | 7.2 | 11.1 | 4.4 | 14.4 | 1.2 | 4.8 | 6.9 | -0.2 | 5.0 | 14.7 | 10.0 | 5.6 |
| MT | 3.3\$ | -1.3\$ | 14.0\$ | 0.3\$ | 0.9\$ | 2.3\$ | 4.8\$ | 3.3\$ | 17.4\$ | 0.2\$ | 3.6\$ | 5.9\$ | 6.7\$ |
| NL | 1.5\$ | -3.8\$ | 8.5\$ | -2.2\$ | 3.4\$ | -1.3\$ | 9.0\$ | 4.1\$ | -0.2\$ | -0.8\$ | 3.1\$ | 2.2\$ | 2.7\$ |
| AT | 2.3\$ | 2.8\$ | 2.3\$ | -0.6\$ | 2.8\$ | 0.1\$ | 1.9\$ | 6.5\$ | -0.6\$ | -0.4\$ | 1.8\$ | 2.2\$ | 2.4\$ |
| PL | 4.3 | 7.7 | 2.8 | -3.2 | 5.0 | 2.0 | 2.1 | 10.6 | -0.2 | 1.3 | 2.3 | 1.9 | 0.9 |
| PT | 3.7 | 1.4 | 3.0 | 0.7 | 2.4 | 1.6 | 1.6 | 3.9 | -0.8 | 1.7 | 11.0 | 11.1 | 2.6 |
| SI | 3.9 | 1.5 | 5.8 | 1.5 | 5.0 | 2.3 | 0.6 | 6.3 | -1.6 | 4.2 | 7.6 | 6.5 | 4.6 |
| SK | 8.1 | 4.7 | 11.0 | 0.4 | 15.7 | -2.0 | 8.2 | 12.5 | 4.8 | 6.5 | 9.2 | 10.1 | 3.8 |
| FI | -0.1 | 0.4 | -12.9 | 0.1 | 1.5 | 0.4 | 1.8 | 1.2 | -7.9 | 1.4 | 6.2 | 1.1 | 2.6 |
| SE | 1.2 | 0.4 | 0.5 | -3.4 | 2.6 | -0.6 | 4.2 | 4.1 | -4.2 | -0.8 | 3.9 | 1.9 | 2.8 |
| UK | 1.6 | 0.8 | 1.9 | -4.7 | 3.8 | 0.3 | 2.0 | 3.9 | 1.0 | -1.1 | 4.7 | 2.9 | 3.6 |
| EEA | 2.3\$ | 1.5\$ | 6.8\$ | 0.0\$ | 2.7\$ | 0.8\$ | 7.0\$ | 4.1\$ | -1.6\$ | -0.3\$ | 3.7\$ | 3.0\$ | 2.5\$ |
| IS | 2.9 | 1.0 | 0.8 | 1.4 | 5.8 | 0.6 | 4.9 | 6.9 | 1.0 | 0.7 | 5.8 | 3.4 | 2.3 |
| NO | 1.3 | 1.9 | 7.2 | -7.0 | 5.6 | -1.7 | 5.4 | 2.4 | -5.6 | 0.2 | 6.9 | 2.0 | -1.1 |

* geschätzt \$ vorläufig # revidiert : nicht verfügbar

COICOP/HVPI Abteilungen

- | | |
|--|--|
| 00. HVPI (Gesamtindex) | 06. Gesundheitspflege |
| 01. Nahrungsmittel und alkoholfreie Getränke | 07. Verkehr |
| 02. Alkoholische Getränke und Tabak | 08. Nachrichtenübermittlung |
| 03. Bekleidung und Schuhe | 09. Freizeit und Kultur |
| 04. Wohnung, Wasser, Elektrizität, Gas und andere Brennstoffe | 10. Erziehung und Unterricht |
| 05. Hausrat und laufende Instandhaltung des Hauses | 11. Restaurants und Hotels |
| | 12. Verschiedene Waren und Dienstleistungen |

Weitere Informationsquellen:

➤ Datenbanken

NewCronos,Thema 2, Domain: price

Wenn Sie weitere Auskünfte wünschen oder an unseren Veröffentlichungen, Datenbanken oder Auszügen daraus interessiert sind, wenden Sie sich bitte an einen unserer **Data Shops**:

| DANMARK | DEUTSCHLAND | ESPAÑA | FRANCE | ITALIA – Roma |
|---|--|--|--|--|
| DANMARKS STATISTIK Bibliotek og Information Eurostat Data Shop Sejrgade 11 DK-2100 KØBENHAVN Ø Tlf. (45) 39 17 30 30 Fax (45) 39 17 30 03 E-mail: bib@dst.dk URL: http://www.dst.dk/bibliotek | Statistisches Bundesamt Eurostat Data Shop Berlin Otto-Braun-Straße 70-72 (Eingang: Karl-Marx-Allee) D-10178 Berlin Tel. (49) 1888-644 94 27/28 (49) 611 75 94 27 Fax (49) 1888-644 94 30 E-Mail: datashop@destatis.de URL: http://www.eu-datashop.de/ | INE Eurostat Data Shop Paseo de la Castellana, 183 Despacho 011B Entrada por Estébanez Caldeón E-28046 MADRID Tel. (34) 915 839 167/ 915 839 500 Fax (34) 915 830 357 E-mail: datashop.eurostat@ine.es URL: http://www.ine.es/produser/datashop/index.html <i>Member of the MIDAS Net</i> | INSEE Info Service Eurostat Data Shop 195, rue de Bercy Tour Gamma A F-75582 PARIS CEDEX 12 Tél. (33) 1 53 17 88 44 Fax (33) 1 53 17 88 22 E-mail: datashop@insee.fr <i>Member of the MIDAS Net</i> | ISTAT Centro di informazione statistica Sede di Roma Eurostat Data Shop Via Cesare Balbo, 11a I-00184 Roma Tel. (39) 06 46 73 32 28 Fax (39) 06 46 73 31 01/ 07 E-mail: datashop@istat.it URL: http://www.istat.it/Prodotti-e/Allegati/Eurostatdatashop.html <i>Member of the MIDAS Net</i> |
| ITALIA – Milano | NEDERLAND | PORTUGAL | SUOMI/FINLAND | SVERIGE |
| ISTAT Ufficio Regionale per la Lombardia Eurostat Data Shop Via Fieno 3 I-20123 MILANO Tel. (39) 02 80 61 32 460 Fax (39) 02 80 61 32 304 E-mail: mileuro@tin.it URL: http://www.istat.it/Prodotti-e/Allegati/Eurostatdatashop.html <i>Member of the MIDAS Net</i> | Centraal Bureau voor de Statistiek Eurostat Data Shop - Voorburg Postbus 4000 NL-2270 JM VOORBURG Nederland Tel. (31) 70 337 49 00 Fax (31) 70 337 59 84 E-mail: datashop@cbs.nl URL: www.cbs.nl/eurodatashop | Eurostat Data Shop Lisboa INE/Serviço de Difusão Av. António José de Almeida, 2 P-1000-043 LISBOA Tel. (351) 21 842 61 00 Fax (351) 21 842 63 64 E-mail: data.shop@ine.pt | Statistics Finland Eurostat Data Shop Helsinki Tilastokirjasto PL 2B FIN-00022 Tilastokeskus Työpajakuu 13 B, 2.Kerros, Helsinki P. (358) 9 17 34 22 21 F. (358) 9 17 34 22 79 Sähköposti: datashop@stat.fi URL: http://tilastokeskus.fi/tup/datashop/index.html | Statistics Sweden Information service Eurostat Data Shop Karlavägen 100 - Box 24 300 S-104 51 STOCKHOLM Tfn (46) 8 50 69 48 01 Fax (46) 8 50 69 48 99 E-post: infoservice@scb.se URL: http://www.scb.se/templates/Eurostatdatashop.aspx Standard 22884.asp |
| UNITED KINGDOM | NORGE | SCHWEIZ/SUISSE/SVIZZERA | UNITED STATES OF AMERICA | |
| Eurostat Data Shop Office for National Statistics Room 1.015 Cardiff Road Newport South Wales NP10 8XG United Kingdom Tel. (44) 1633 81 33 69 Fax (44) 1633 81 33 33 E-mail: eurostat.datashop@ons.gov.uk | Statistics Norway Library and Information Centre Eurostat Data Shop Kongens gate 6 Boks 8131 Dep. N-0033 OSLO Tel. (47) 21 09 46 42 / 43 Fax (47) 21 09 45 04 E-mail: Datashop@ssb.no URL: http://www.ssb.no/biblioteket/datashop/ | Statistisches Amt des Kantons Zürich Eurostat Data Shop Bleicherweg 5 CH-8090 Zürich Tel. (41) 1 225 12 12 Fax (41) 1 225 12 99 E-mail: datashop@statistik.zh.ch URL: http://www.statistik.zh.ch | Harver Analytics Eurostat Data Shop 60 East 42nd Street Suite 3310 NEW YORK, NY 10165 USA Tel. (1) 212 986 93 00 Fax (1) 212 986 69 81 E-mail: euromdata@haver.com URL: http://www.haver.com/ | |

Media Support Eurostat (nur für Journalisten):

Bech Gebäude Büro A4/017 • L-2920 Luxembourg • Tel. (352) 4301 33408 • Fax (352) 4301 35349 • e-mail: eurostat-mediasupport@cec.eu.int

Auskünfte zur Methodik:

Carsten OLSSON, Eurostat / C5, L-2920 Luxembourg, Tel. (352) 4301 33375, Fax (352) 4301 33989,

E-mail: estat-hicp-methods@cec.eu.int

ORIGINAL: Englisch

Unsere Internet-Adresse: www.europa.eu.int/comm/eurostat/ Dort finden Sie weitere Informationen.

Ein Verzeichnis unserer Verkaufsstellen in der ganzen Welt erhalten Sie beim **Amt für amtliche Veröffentlichungen der Europäischen Gemeinschaften**

2 rue Mercier – L-2985 Luxembourg
Tel. (352) 2929 42118 Fax (352) 2929 42709

URL: <http://publications.eu.int>

E-mail: info-info-opoce@cec.eu.int

BELGIQUE/BELGIË – DANMARK – DEUTSCHLAND – GREECE/ELLADA – ESPAÑA – FRANCE – IRELAND – ITALIA – LUXEMBOURG – NEDERLAND – ÖSTERREICH
PORTUGAL – SUOMI/FINLAND – SVERIGE – UNITED KINGDOM – ÍSLAND – NORGE – SCHWEIZ/SUISSE/SVIZZERA – BALGARUA – CESHÁ REPUBLIKA – CYPRUS
EESTI – HRVATSKA – MAGYARORSZÁG – MALTA – POLSKA – ROMÂNIA – RUSSIA – SLOVAKIA – SLOVENIA – TÜRKIYE – AUSTRALIA – CANADA – EGYPT – INDIA
ISRAËL – JAPAN – MALAYSIA – PHILIPPINES – SOUTH KOREA – THAILAND – UNITED STATES OF AMERICA