

Harmonized Indices of Consumer Prices April 2002

Statistics in focus

ECONOMY AND FINANCE

THEME 2 – 16/2002

PRICES AND PURCHASING POWER PARITIES

Contents

| | |
|-----------------------------|---|
| Price Indices | 2 |
| Rates of Change | 4 |
| COICOP/HICP Main categories | 6 |
| Methodological Notes | 7 |

The rate of inflation for the euro-zone*, as measured by the Monetary Union Index of Consumer Prices (MUICP), was 2.4% comparing April 2002 with April 2001. The MUICP is the average of the HICPs for the euro-zone Member States. The euro-zone is treated as an entity regardless of its composition.

The annual rate of change for the euro-zone fell from 2.5% to 2.4% between March and April 2002. A year ago, in April 2001, the corresponding rate was 2.9%.

The rate of inflation in the EU, as measured by the European Index of Consumer Prices (EICP=EU-15), fell from 2.3% to 2.2% between March and April 2002**. A year ago, in April 2001, the corresponding rate was 2.6%.

EU Member States with the lowest inflation rates in April 2002 were Germany and Austria (1.6% each), and Belgium (1.7%). Highest inflation rates were reported for Ireland (5.0%), the Netherlands (4.2%) and Greece (4.1%).

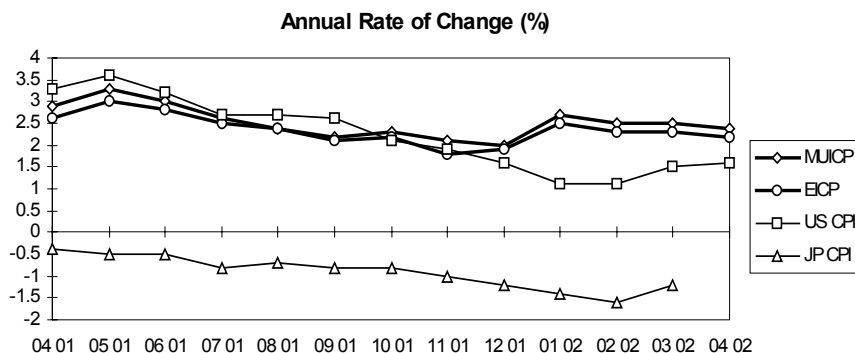
The annual rate of inflation for the European Economic Area (EEA) fell from 2.3% to 2.2% between March and April 2002**. A year ago, in April 2001, the corresponding rate was 2.6%. The annual rate of change rose from 0.5% in March to 1.1% in April 2002 in Switzerland*** and from 1.5% in March to 1.6% in April 2002 in the USA***. (No April data available for Japan*** in time for publication).

The inflation rates for the euro-zone, the EU and the USA*** from April 2001 to April 2002 and for Japan*** from April 2001 to March 2002 are shown in the graph below:

* The euro-zone comprises: Belgium, Germany, Greece (from January 2001), Spain, France, Ireland, Italy, Luxembourg, the Netherlands, Austria, Portugal and Finland.

** Data for the United Kingdom for April 2002 were not available when going to press. Due to this fact, EU-15 (EICP) and EEA (EEAICP) were calculated using Eurostat estimates.

*** For the USA, Japan and Switzerland the national CPIs are given, which are not strictly comparable with the HICPs.



| TABLE I HARMONIZED INDICES OF CONSUMER PRICES INDEX NUMBERS | | | | | | | | | | | | |
|---|---|-----------------|-------|-------|-------|-------|--------|---------|-------|---------|-------|---------|
| | Euro-zone (MUICP) | EU-15 (EICP) | B | DK | D | EL | E | F | IRL | I | L | NL |
| | Annual Average Index | | | | | | | | | | | |
| | 1996 = 100 | | | | | | | | | | | |
| 1998 | 102.7 | 103.0 | 102.4 | 103.3 | 102.1 | 110.2 | 103.7 | 102.0 | 103.4 | 103.9 | 102.4 | 103.7 |
| 1999 | 103.8 | 104.3 | 103.6 | 105.4 | 102.8 | 112.6 | 106.0 | 102.5 | 106.0 | 105.7 | 103.4 | 105.8 |
| 2000 | 106.3 | 106.4 | 106.4 | 108.3 | 104.9 | 115.8 | 109.7 | 104.4 | 111.5 | 108.4 | 107.3 | 108.2 |
| 2001 | 108.9 | 108.9 | 109.0 | 110.7 | 107.4 | 120.1 | 112.8# | 106.3 | 116.0 | 110.9 | 109.9 | 113.8 |
| 2000 | Monthly Index | | | | | | | | | | | |
| January | 104.8 | 105.0 | 103.1 | 106.5 | 103.8 | 113.2 | 107.7 | 103.3 | 108.2 | 106.9 | 104.3 | 105.8 |
| February | 105.2 | 105.4 | 105.2 | 107.0 | 104.2 | 112.7 | 107.9 | 103.5 | 109.1 | 107.3 | 105.4 | 106.4 |
| March | 105.6 | 105.8 | 105.7 | 107.8 | 104.4 | 115.6 | 108.4 | 104.0 | 109.8 | 107.7 | 105.9 | 107.6 |
| April | 105.7 | 106.0 | 105.9 | 108.0 | 104.3 | 116.3 | 108.8 | 104.0 | 110.5 | 107.7 | 106.6 | 108.0 |
| May | 105.8 | 106.1 | 106.2 | 108.4 | 104.2 | 116.6 | 109.0 | 104.2 | 111.3 | 108.1 | 106.6 | 108.3 |
| June | 106.3 | 106.5 | 106.6 | 108.8 | 104.9 | 115.9 | 109.3 | 104.5 | 111.9 | 108.4 | 108.1 | 108.3 |
| July | 106.4 | 106.5 | 105.5 | 108.3 | 105.4 | 113.9 | 110.0 | 104.3 | 111.9 | 108.6 | 107.0 | 108.0 |
| August | 106.5 | 106.5 | 107.1 | 108.0 | 105.2 | 114.1 | 110.4 | 104.5 | 112.5 | 108.6 | 107.7 | 108.4 |
| September | 107.0 | 107.1 | 107.9 | 109.0 | 105.7 | 116.5 | 110.8 | 105.1 | 112.8 | 108.9 | 108.5 | 109.4 |
| October | 107.0 | 107.2 | 107.7 | 109.2 | 105.4 | 117.8 | 111.0 | 105.0 | 113.4 | 109.2 | 108.9 | 109.8 |
| November | 107.3 | 107.5 | 107.9 | 109.3 | 105.7 | 118.3 | 111.3 | 105.2 | 113.6 | 109.6 | 109.2 | 109.7 |
| December | 107.4 | 107.5 | 107.6 | 109.1 | 105.8 | 118.9 | 111.6 | 105.2 | 113.5 | 109.7 | 109.4 | 109.2 |
| 2001 | Monthly Index | | | | | | | | | | | |
| January | 107.2 | 107.2 | 105.9 | 108.9 | 106.1 | 116.8 | 110.8# | 104.7 | 112.4 | 109.5 | 107.3 | 110.7 |
| February | 107.5# | 107.5# | 107.8 | 109.5 | 106.8 | 116.6 | 110.8# | 105.0 | 113.4 | 108.9 | 108.5 | 111.7 |
| March | 108.1# | 108.1# | 108.0 | 110.2 | 107.0 | 119.3 | 111.7# | 105.5 | 114.3 | 110.0 | 109.1 | 113.0 |
| April | 108.8 | 108.8 | 109.0 | 110.8 | 107.3 | 120.6 | 112.7# | 106.1 | 115.2 | 110.8 | 109.5 | 113.9 |
| May | 109.3# | 109.3# | 109.5 | 111.4 | 107.9 | 121.2 | 113.1# | 106.8 | 115.9 | 111.2 | 110.7 | 114.2 |
| June | 109.5 | 109.5 | 109.8 | 111.2 | 108.1 | 121.1 | 113.4# | 106.8 | 116.7 | 111.5 | 111.0 | 113.8 |
| July | 109.2 | 109.1 | 108.4 | 110.8 | 108.1 | 118.7 | 112.6# | 106.6 | 116.4 | 111.2 | 109.6 | 113.7 |
| August | 109.1 | 109.1 | 109.8 | 110.7 | 107.9 | 118.7 | 112.7# | 106.6 | 116.7 | 110.8 | 110.4 | 114.0 |
| September | 109.4# | 109.4# | 110.0 | 111.3 | 107.9 | 121.2 | 113.3# | 106.8 | 117.1 | 111.2 | 110.6 | 115.2 |
| October | 109.5# | 109.5# | 109.8 | 111.4 | 107.5 | 121.6 | 113.8# | 106.9 | 117.7 | 111.8 | 110.7 | 115.3 |
| November | 109.5 | 109.4 | 109.8 | 111.2 | 107.3 | 121.7 | 114.1# | 106.6 | 117.5 | 112.0 | 110.7 | 115.0 |
| December | 109.6 | 109.6 | 109.7 | 111.4 | 107.4 | 123.1 | 114.4# | 106.7 | 118.5 | 112.1 | 110.4 | 114.8 |
| 2002 | Monthly Index | | | | | | | | | | | |
| January | 110.1 | 109.9 | 108.7 | 111.6 | 108.5 | 122.4 | 114.2# | 107.2 | 118.3 | 112.1 | 109.6 | 116.1 |
| February | 110.2 | 110.0 | 110.5 | 112.1 | 108.7 | 121.0 | 114.3# | 107.3 | 119.0 | 111.8 | 110.9 | 116.7 |
| March | 110.8# | 110.6# | 110.7 | 113.0 | 109.0 | 124.5 | 115.3# | 107.8 | 120.1 | 112.8 | 111.0 | 117.9 |
| April | 111.4\$ | 111.2* | 110.8 | 113.4 | 109.0 | 125.5 | 116.9 | 108.3\$ | 121.0 | 113.6\$ | 111.6 | 118.7\$ |
| May | | | | | | | | | | | | |
| June | | | | | | | | | | | | |
| July | | | | | | | | | | | | |
| August | | | | | | | | | | | | |
| September | | | | | | | | | | | | |
| October | | | | | | | | | | | | |
| November | | | | | | | | | | | | |
| December | | | | | | | | | | | | |
| | * estimated \$ provisional # revised ! definition differs : Not available | | | | | | | | | | | |

TABLE II
NATIONAL CPIs
INDEX NUMBERS

| A | P | FIN | S | UK | EEAICP | IS | N | CH | US | JP | |
|---------|-------|-------|-------|-------|--------|-------|-------|------------|-------|-------|-------------|
| | | | | | | | | 1996 = 100 | | | |
| 102.0 | 104.2 | 102.6 | 102.9 | 103.4 | 103.1 | 103.2 | 104.6 | 100.5 | 103.9 | 102.4 | 1998 |
| 102.5 | 106.4 | 103.9 | 103.4 | 104.8 | 104.3 | 105.4 | 106.8 | 101.4 | 106.2 | 102.1 | 1999 |
| 104.5 | 109.4 | 107.0 | 104.8 | 105.6 | 106.5 | 110.0 | 110.0 | 102.9 | 109.8 | 101.4 | 2000 |
| 106.9 | 114.2 | 109.8 | 107.6 | 106.9 | 108.9# | 117.3 | 113.0 | 103.8 | 112.9 | 100.8 | 2001 |
| | | | | | | | | | | | 2000 |
| 103.5 | 107.3 | 104.8 | 103.5 | 104.5 | 105.0 | 108.2 | 108.5 | 102.2 | 107.6 | 101.3 | January |
| 104.3 | 107.0 | 105.6 | 104.0 | 104.9 | 105.4 | 107.8 | 109.0 | 102.6 | 108.3 | 101.2 | February |
| 104.4 | 107.2 | 106.3 | 104.6 | 105.1 | 105.9 | 108.4 | 109.3 | 102.6 | 109.1 | 101.4 | March |
| 104.2 | 108.4 | 106.5 | 104.4 | 105.5 | 106.0 | 109.4 | 109.7 | 102.6 | 109.2 | 101.6 | April |
| 104.1 | 109.1 | 107.0 | 105.0 | 105.7 | 106.1 | 109.8 | 109.8 | 102.6 | 109.3 | 101.7 | May |
| 104.5 | 109.7 | 107.4 | 105.0 | 105.9 | 106.6 | 110.2 | 110.5 | 103.0 | 109.9 | 101.4 | June |
| 104.2 | 110.2 | 106.9 | 104.4 | 105.4 | 106.5 | 110.9 | 110.0 | 103.0 | 110.2 | 101.2 | July |
| 104.3 | 110.3 | 107.0 | 104.5 | 105.4 | 106.6 | 110.2 | 109.7 | 102.8 | 110.2 | 101.2 | August |
| 104.7 | 110.2 | 108.1 | 105.4 | 106.2 | 107.2 | 110.4 | 110.7 | 103.3 | 110.7 | 101.5 | September |
| 105.0 | 110.5 | 108.2 | 105.6 | 106.1 | 107.2 | 111.5 | 110.8 | 103.2 | 110.9 | 101.6 | October |
| 105.4 | 111.2 | 108.1 | 105.7 | 106.4 | 107.5 | 111.7 | 111.2 | 103.7 | 111.0 | 101.4 | November |
| 105.8 | 111.6 | 107.9 | 105.5 | 106.4 | 107.6 | 111.6 | 111.0 | 103.6 | 110.9 | 101.4 | December |
| | | | | | | | | | | | 2001 |
| 105.8 | 112.0 | 107.8 | 105.2 | 105.4 | 107.3 | 111.9 | 111.9 | 103.5 | 111.6 | 101.4 | January |
| 106.2 | 112.2 | 108.5 | 105.6 | 105.7 | 107.6 | 112.0 | 112.8 | 103.4 | 112.1 | 101.1 | February |
| 106.4 | 112.7 | 109.0 | 106.4 | 106.1 | 108.1# | 112.8 | 113.1 | 103.6 | 112.3 | 101.0 | March |
| 106.9 | 113.4 | 109.5 | 107.5 | 106.7 | 108.8 | 114.2 | 113.7 | 103.8 | 112.8 | 101.2 | April |
| 107.1 | 114.4 | 110.5 | 108.3 | 107.5 | 109.4# | 116.0 | 114.2 | 104.4 | 113.2 | 101.2 | May |
| 107.2 | 114.7 | 110.6 | 108.1 | 107.7 | 109.6 | 118.1 | 114.2 | 104.6 | 113.4 | 100.9 | June |
| 107.1 | 114.9 | 109.7 | 107.4 | 106.9 | 109.2 | 119.1 | 112.4 | 104.4 | 113.2 | 100.4 | July |
| 106.8 | 114.7 | 109.9 | 107.6 | 107.3 | 109.2 | 119.1 | 112.1 | 103.9 | 113.2 | 100.5 | August |
| 107.2 | 114.7 | 110.9 | 108.9 | 107.6 | 109.5# | 120.1 | 112.8 | 104.0 | 113.6 | 100.7 | September |
| 107.4 | 115.1 | 110.8 | 108.7 | 107.4 | 109.5# | 120.8 | 112.8 | 103.8 | 113.2 | 100.7 | October |
| 107.4 | 115.8 | 110.4 | 108.8 | 107.2 | 109.5 | 121.3 | 112.7 | 104.0 | 113.1 | 100.4 | November |
| 107.7 | 116.0 | 110.4 | 108.9 | 107.5 | 109.6 | 121.8 | 112.8 | 103.9 | 112.7 | 100.2 | December |
| | | | | | | | | | | | 2002 |
| 107.9 | 116.1 | 110.9 | 108.2 | 107.1 | 109.9 | 122.9 | 112.9 | 104.1 | 112.8 | 100.0 | January |
| 108.0 | 115.9 | 111.2 | 108.5 | 107.3 | 110.1 | 122.6 | 113.3 | 104.1 | 113.3 | 99.5 | February |
| 108.2 | 116.4 | 111.8 | 109.6 | 107.7 | 110.7 | 123.1 | 113.6 | 104.1 | 113.9 | 99.8 | March |
| 108.6\$ | 117.4 | 112.3 | 109.9 | : | 111.2* | 123.0 | 113.6 | 105.0 | 114.6 | : | April |
| | | | | | | | | | | | May |
| | | | | | | | | | | | June |
| | | | | | | | | | | | July |
| | | | | | | | | | | | August |
| | | | | | | | | | | | September |
| | | | | | | | | | | | October |
| | | | | | | | | | | | November |
| | | | | | | | | | | | December |

* estimated \$ provisional # revised ! definition differs : Not available

TABLE III
HARMONIZED INDICES OF CONSUMER PRICES
RATES OF CHANGE (%)

| | Euro-zone (MUICP) | EU-15 (EICP) | B | DK | D | EL | E | F | IRL | I | L | NL |
|---|----------------------|-----------------|-----|-----|-----|-----|------|-------|-----|-------|-----|-------|
| Annual Average Rate of Change | | | | | | | | | | | | |
| 1999 | 1.1 | 1.2 | 1.1 | 2.1 | 0.6 | 2.1 | 2.2 | 0.6 | 2.5 | 1.7 | 1.0 | 2.0 |
| 2000 | 2.3 | 2.1 | 2.7 | 2.7 | 2.1 | 2.9 | 3.5 | 1.8 | 5.3 | 2.6 | 3.8 | 2.3 |
| 2001 | 2.5 | 2.3 | 2.4 | 2.3 | 2.4 | 3.7 | 2.8# | 1.8 | 4.0 | 2.3 | 2.4 | 5.1 |
| 2002 (Apr) | 2.5\$ | 2.3* | 2.4 | 2.3 | 2.2 | 3.9 | 2.9 | 2.0\$ | 4.3 | 2.4\$ | 2.1 | 4.9\$ |
| Annual Rate of Change (t/t-12) | | | | | | | | | | | | |
| 2000 | | | | | | | | | | | | |
| January | 1.9 | 1.8 | 0.3 | 2.8 | 1.9 | 2.4 | 2.9 | 1.7 | 4.4 | 2.2 | 3.5 | 1.6 |
| February | 2.0 | 1.9 | 2.1 | 2.8 | 2.1 | 2.6 | 3.0 | 1.5 | 4.6 | 2.4 | 2.6 | 1.5 |
| March | 2.1 | 1.9 | 2.5 | 3.0 | 2.1 | 2.8 | 3.0 | 1.7 | 5.0 | 2.6 | 3.0 | 1.6 |
| April | 1.9 | 1.7 | 2.3 | 2.9 | 1.6 | 2.1 | 3.0 | 1.4 | 5.0 | 2.4 | 3.2 | 1.7 |
| May | 1.9 | 1.7 | 2.4 | 2.8 | 1.5 | 2.6 | 3.2 | 1.6 | 5.1 | 2.5 | 2.9 | 2.0 |
| June | 2.4 | 2.1 | 3.0 | 2.9 | 2.0 | 2.2 | 3.5 | 1.9 | 5.4 | 2.7 | 4.4 | 2.5 |
| July | 2.3 | 2.1 | 1.7 | 2.8 | 2.0 | 2.6 | 3.7 | 2.0 | 5.9 | 2.6 | 4.7 | 2.8 |
| August | 2.3 | 2.0 | 3.5 | 2.2 | 1.8 | 2.9 | 3.6 | 2.0 | 5.7 | 2.6 | 3.7 | 2.5 |
| September | 2.8 | 2.5 | 3.9 | 2.7 | 2.6 | 3.0 | 3.7 | 2.3 | 5.5 | 2.6 | 4.2 | 2.9 |
| October | 2.7 | 2.4 | 3.7 | 2.8 | 2.4 | 3.8 | 4.0 | 2.1 | 6.0 | 2.7 | 4.3 | 3.2 |
| November | 2.9 | 2.6 | 3.7 | 2.7 | 2.6 | 4.0 | 4.1 | 2.2 | 6.0 | 2.9 | 4.5 | 2.9 |
| December | 2.6 | 2.3 | 3.0 | 2.3 | 2.3 | 3.7 | 4.0 | 1.7 | 4.6 | 2.8 | 4.3 | 2.9 |
| Annual Rate of Change (t/t-12) | | | | | | | | | | | | |
| 2001 | | | | | | | | | | | | |
| January | 2.3 | 2.1 | 2.7 | 2.3 | 2.2 | 3.2 | 2.9# | 1.4 | 3.9 | 2.4 | 2.9 | 4.6 |
| February | 2.2# | 2.0# | 2.5 | 2.3 | 2.5 | 3.5 | 2.7# | 1.4 | 3.9 | 1.5 | 2.9 | 5.0 |
| March | 2.4# | 2.1# | 2.2 | 2.2 | 2.5 | 3.2 | 3.0# | 1.4 | 4.1 | 2.1 | 3.0 | 5.0 |
| April | 2.9 | 2.6 | 2.9 | 2.6 | 2.9 | 3.7 | 3.6# | 2.0 | 4.3 | 2.9 | 2.7 | 5.5 |
| May | 3.3# | 3.0# | 3.1 | 2.8 | 3.6 | 3.9 | 3.8# | 2.5 | 4.1 | 2.9 | 3.8 | 5.4 |
| June | 3.0 | 2.8 | 3.0 | 2.2 | 3.1 | 4.5 | 3.8# | 2.2 | 4.3 | 2.9 | 2.7 | 5.1 |
| July | 2.6 | 2.5 | 2.7 | 2.3 | 2.6 | 4.2 | 2.4# | 2.2 | 4.0 | 2.4 | 2.4 | 5.3 |
| August | 2.4 | 2.4 | 2.5 | 2.5 | 2.6 | 4.0 | 2.1# | 2.0 | 3.7 | 2.0 | 2.5 | 5.2 |
| September | 2.2# | 2.1# | 1.9 | 2.1 | 2.1 | 4.0 | 2.3# | 1.6 | 3.8 | 2.1 | 1.9 | 5.3 |
| October | 2.3# | 2.2 | 1.9 | 2.0 | 2.0 | 3.2 | 2.5# | 1.8 | 3.8 | 2.4 | 1.7 | 5.0 |
| November | 2.1 | 1.8 | 1.8 | 1.7 | 1.5 | 2.9 | 2.5# | 1.3 | 3.4 | 2.2 | 1.4 | 4.8 |
| December | 2.0 | 1.9 | 2.0 | 2.1 | 1.5 | 3.5 | 2.5# | 1.4 | 4.4 | 2.2 | 0.9 | 5.1 |
| Annual Rate of Change (t/t-12) | | | | | | | | | | | | |
| 2002 | | | | | | | | | | | | |
| January | 2.7 | 2.5 | 2.6 | 2.5 | 2.3 | 4.8 | 3.1 | 2.4 | 5.2 | 2.4 | 2.1 | 4.9 |
| February | 2.5# | 2.3 | 2.5 | 2.4 | 1.8 | 3.8 | 3.2 | 2.2 | 4.9 | 2.7 | 2.2 | 4.5 |
| March | 2.5 | 2.3 | 2.5 | 2.5 | 1.9 | 4.4 | 3.2# | 2.2 | 5.1 | 2.5 | 1.7 | 4.3 |
| April | 2.4\$ | 2.2* | 1.7 | 2.3 | 1.6 | 4.1 | 3.7 | 2.1\$ | 5.0 | 2.5\$ | 1.9 | 4.2\$ |
| May | | | | | | | | | | | | |
| June | | | | | | | | | | | | |
| July | | | | | | | | | | | | |
| August | | | | | | | | | | | | |
| September | | | | | | | | | | | | |
| October | | | | | | | | | | | | |
| November | | | | | | | | | | | | |
| December | | | | | | | | | | | | |
| * estimated \$ provisional # revised ! definition differs : Not available | | | | | | | | | | | | |

TABLE IV
NATIONAL CPIs
RATES OF CHANGE (%)

| A | P | FIN | S | UK | EEAICP | IS | N | CH | US | JP | |
|-------|-----|-----|-----|-----|--------|-----|------|-----|-----|------|-------------------|
| 0.5 | 2.2 | 1.3 | 0.6 | 1.3 | 1.2 | 2.1 | 2.1 | 0.8 | 2.2 | -0.3 | 1999 |
| 2.0 | 2.8 | 3.0 | 1.3 | 0.8 | 2.1 | 4.4 | 3.0 | 1.6 | 3.4 | -0.7 | 2000 |
| 2.3 | 4.4 | 2.7 | 2.7 | 1.2 | 2.3 | 6.6 | 2.7 | 1.0 | 2.8 | -0.6 | 2001 |
| 2.2\$ | 4.0 | 2.6 | 2.9 | : | 2.3* | 8.3 | 1.7 | 0.9 | 2.1 | : | 2002 (Apr) |
| | | | | | | | | | | | 2000 |
| 1.4 | 1.9 | 2.3 | 1.0 | 0.8 | 1.8 | 4.6 | 2.6 | 1.6 | 2.7 | -0.9 | January |
| 2.0 | 1.6 | 2.7 | 1.4 | 1.0 | 1.9 | 4.4 | 2.9 | 1.6 | 3.2 | -0.6 | February |
| 2.0 | 1.4 | 3.2 | 1.4 | 0.7 | 1.9 | 4.6 | 2.6 | 1.5 | 3.8 | -0.5 | March |
| 1.8 | 1.9 | 2.5 | 1.0 | 0.6 | 1.7 | 5.1 | 2.7 | 1.4 | 3.1 | -0.8 | April |
| 1.6 | 2.4 | 2.7 | 1.3 | 0.5 | 1.7 | 5.0 | 2.9 | 1.6 | 3.2 | -0.7 | May |
| 2.4 | 2.8 | 3.1 | 1.4 | 0.8 | 2.1 | 4.8 | 3.5 | 1.8 | 3.7 | -0.7 | June |
| 2.0 | 3.3 | 2.9 | 1.3 | 1.0 | 2.1 | 5.2 | 3.3 | 1.9 | 3.7 | -0.5 | July |
| 1.9 | 3.6 | 2.9 | 1.4 | 0.6 | 2.0 | 4.1 | 3.5 | 1.1 | 3.4 | -0.8 | August |
| 2.3 | 3.6 | 3.4 | 1.3 | 1.0 | 2.5 | 3.6 | 3.6 | 1.4 | 3.5 | -0.8 | September |
| 2.2 | 3.7 | 3.4 | 1.3 | 1.0 | 2.4 | 3.8 | 3.1 | 1.3 | 3.4 | -0.9 | October |
| 2.3 | 3.6 | 3.3 | 1.8 | 1.0 | 2.6 | 4.1 | 3.1 | 1.9 | 3.4 | -0.5 | November |
| 1.8 | 3.8 | 2.9 | 1.3 | 0.9 | 2.3 | 3.7 | 2.7 | 1.5 | 3.4 | -0.2 | December |
| | | | | | | | | | | | 2001 |
| 2.2 | 4.4 | 2.9 | 1.6 | 0.9 | 2.1 | 3.4 | 3.1 | 1.3 | 3.7 | 0.1 | January |
| 1.8 | 4.9 | 2.7 | 1.5 | 0.8 | 2.0# | 3.9 | 3.5 | 0.8 | 3.5 | -0.1 | February |
| 1.9 | 5.1 | 2.5 | 1.7 | 1.0 | 2.2 | 4.1 | 3.5 | 1.0 | 2.9 | -0.4 | March |
| 2.6 | 4.6 | 2.8 | 3.0 | 1.1 | 2.6 | 4.4 | 3.6 | 1.2 | 3.3 | -0.4 | April |
| 2.9 | 4.9 | 3.3 | 3.1 | 1.7 | 3.1 | 5.6 | 4.0 | 1.8 | 3.6 | -0.5 | May |
| 2.6 | 4.6 | 3.0 | 3.0 | 1.7 | 2.8 | 7.2 | 3.3 | 1.6 | 3.2 | -0.5 | June |
| 2.8 | 4.3 | 2.6 | 2.9 | 1.4 | 2.5 | 7.4 | 2.2 | 1.4 | 2.7 | -0.8 | July |
| 2.4 | 4.0 | 2.7 | 3.0 | 1.8 | 2.4 | 8.1 | 2.2 | 1.1 | 2.7 | -0.7 | August |
| 2.4 | 4.1 | 2.6 | 3.3 | 1.3 | 2.1# | 8.8 | 1.9 | 0.7 | 2.6 | -0.8 | September |
| 2.3 | 4.2 | 2.4 | 2.9 | 1.2 | 2.2 | 8.3 | 1.8 | 0.6 | 2.1 | -0.8 | October |
| 1.9 | 4.1 | 2.1 | 2.9 | 0.8 | 1.8 | 8.6 | 1.3 | 0.3 | 1.9 | -1.0 | November |
| 1.8 | 3.9 | 2.3 | 3.2 | 1.0 | 1.9 | 9.1 | 1.6 | 0.3 | 1.6 | -1.2 | December |
| | | | | | | | | | | | 2002 |
| 2.0 | 3.7 | 2.9 | 2.9 | 1.6 | 2.5 | 9.8 | 0.9 | 0.5 | 1.1 | -1.4 | January |
| 1.7 | 3.3 | 2.5 | 2.7 | 1.5 | 2.3 | 9.5 | 0.4 | 0.7 | 1.1 | -1.6 | February |
| 1.7 | 3.3 | 2.6 | 3.0 | 1.5 | 2.3 | 9.1 | 0.4 | 0.5 | 1.5 | -1.2 | March |
| 1.6\$ | 3.5 | 2.6 | 2.2 | : | 2.2* | 7.7 | -0.1 | 1.1 | 1.6 | : | April |
| | | | | | | | | | | | May |
| | | | | | | | | | | | June |
| | | | | | | | | | | | July |
| | | | | | | | | | | | August |
| | | | | | | | | | | | September |
| | | | | | | | | | | | October |
| | | | | | | | | | | | November |
| | | | | | | | | | | | December |

* estimated \$ provisional # revised ! definition differs : Not available

TABLE V
MAIN CATEGORIES OF HARMONIZED INDICES OF CONSUMER PRICES

ANNUAL RATES OF CHANGE (%)

| COICOP /HICP Code | COICOP/HICP Divisions | Euro-zone (MUICP) | EU-15 (EICP) | B | DK | D | EL | E | F | IRL | I | L | NL | A | P | FIN | S | UK | EEAICP | IS | N |
|-------------------|---|------------------------------|--------------|-----|------|-----|------|------|-------|------|--------|------|--------|--------|------|-----|-------|----|--------|------|------|
| | | Annual Rate of Change | | | | | | | | | | | | | | | | | | | |
| | | April 2002 / April 2001 | | | | | | | | | | | | | | | | | | | |
| 00. | HICP (all-items index) | 2.4\$ | 2.2* | 1.7 | 2.3 | 1.6 | 4.1 | 3.7 | 2.1\$ | 5.0 | 2.5\$ | 1.9 | 4.2\$ | 1.6\$ | 3.5 | 2.6 | 2.2 | : | 2.2* | 7.7 | -0.1 |
| 01. | FOOD AND NON-ALCOHOLIC BEVERAGES | 3.4\$ | 3.4\$ | 2.7 | 1.8 | 2.1 | 7.5 | 4.7 | 3.6\$ | 3.2 | 4.2\$ | 4.2 | 3.5\$ | 1.8\$ | 2.2 | 4.6 | 4.6 | : | 3.3\$ | 6.8 | -5.7 |
| 02. | ALCOHOLIC BEVERAGES AND TOBACCO | 3.9\$ | 3.5\$ | 0.9 | -0.5 | 3.4 | 11.3 | 7.9 | 4.8\$ | 5.4 | 0.3\$ | 4.2 | 4.8\$ | 3.0\$ | 6.5 | 1.8 | 0.9 | : | 3.5\$ | 10.4 | -0.8 |
| 03. | CLOTHING AND FOOTWEAR | 2.4\$ | 1.8\$ | 1.3 | 1.6 | 1.3 | 3.8 | 5.6 | 1.2\$ | -2.8 | 2.8\$ | 1.8 | 4.2\$ | -0.1\$ | 3.4 | 0.5 | 1.6 | : | 1.7\$ | -1.1 | -3.9 |
| 04. | HOUSING, WATER, ELECTRICITY, GAS AND OTHER FUELS | 1.3\$ | 1.4\$ | 0.3 | 3.7 | 0.7 | 4.1 | 1.8 | 2.2\$ | 5.3 | -0.2\$ | 0.4 | 4.6\$ | 0.5\$ | 2.4 | 3.4 | 3.6 | : | 1.4\$ | 7.5 | 0.3 |
| 05. | FURNISHINGS, HOUSEHOLD EQUIPMENT AND ROUTINE MAINTENANCE OF THE HOUSE | 1.8\$ | 2.1\$ | 2.0 | 2.0 | 1.4 | 1.8 | 2.0 | 1.4\$ | 1.7 | 1.6\$ | 2.1 | 4.3\$ | 1.5\$ | 3.0 | 1.8 | 2.8 | : | 2.0\$ | 12.4 | 0.1 |
| 06. | HEALTH | 2.6\$ | 2.8\$ | 1.6 | 1.9 | 0.4 | 4.9 | 3.2 | 0.3\$ | 10.1 | 5.0\$ | -6.3 | 10.4\$ | 3.6\$ | 5.0 | 5.4 | 3.8 | : | 2.8\$ | 10.0 | 3.6 |
| 07. | TRANSPORT | 1.6\$ | 1.5\$ | 1.1 | 2.7 | 2.1 | -1.2 | 2.2 | 0.7\$ | 3.3 | 2.0\$ | -0.6 | 1.2\$ | 0.5\$ | 3.8 | 0.9 | 0.9 | : | 1.5\$ | 7.7 | 1.1 |
| 08. | COMMUNICATIONS | -0.8\$ | -0.2\$ | 0.0 | 0.3 | 0.1 | -4.1 | -3.0 | 0.1\$ | 2.5 | -1.7\$ | -5.5 | -1.7\$ | -0.7\$ | -0.1 | 2.2 | 0.7 | : | -0.1\$ | 4.1 | 1.3 |
| 09. | RECREATION AND CULTURE | 1.4\$ | 1.4\$ | 1.0 | 1.4 | 0.7 | 2.4 | 1.8 | 0.4\$ | 7.1 | 2.7\$ | 3.6 | 4.2\$ | 1.2\$ | 2.7 | 1.6 | 0.1 | : | 1.4\$ | 8.6 | 0.9 |
| 10. | EDUCATION | 4.0\$ | 4.1\$ | 3.5 | 3.8 | 2.6 | 3.6 | 3.7 | 2.6\$ | 9.4 | 2.8\$ | 8.0 | 3.8\$ | 30.0\$ | 6.1 | 2.6 | -27.6 | : | 4.2\$ | 8.8 | 10.1 |
| 11. | RESTAURANTS AND HOTELS | 4.4\$ | 4.5\$ | 3.9 | 2.1 | 3.2 | 5.6 | 5.8 | 3.9\$ | 7.4 | 4.2\$ | 4.1 | 7.4\$ | 2.2\$ | 5.2 | 2.1 | 4.8 | : | 4.5\$ | 8.7 | 4.3 |
| 12. | MISCELLANEOUS GOODS AND SERVICES | 3.1\$ | 3.1\$ | 3.0 | 5.3 | 2.8 | 2.2 | 3.5 | 2.6\$ | 8.3 | 3.6\$ | 2.1 | 5.0\$ | 3.0\$ | 5.5 | 2.0 | 1.2 | : | 3.1\$ | 11.2 | 1.6 |

* estimated \$ provisional # revised ! definition differs : Not available

➤ METHODOLOGICAL NOTES

Harmonized Indices of Consumer Prices (HICPs) are produced and published monthly. They are central indicators for ESCBs/ECBs single monetary policy for the euro-zone as they form the basis of the Monetary Union Index of Consumer Prices (MUICP). HICPs provide the best statistical basis for international comparisons of consumer price inflation in the European perspective. HICPs cover virtually all areas of household final monetary consumption expenditure (HFMCE).

The relative distribution of consumers' expenditure on individual products varies from country to country. Hence, there is no *uniform basket* applying to all Member States. Owner occupiers' shelter costs, where expressed as imputed rents or mortgage interest payments, are not regarded as part of the inflationary process and hence excluded.

The weights used in the compilation of HICPs may relate to a reference period up to seven years prior to the current year. However, adjustments must be made each year for especially large changes in the expenditure pattern. This minimises disparities arising from different up-date frequencies.

In order to keep HICPs broadly in step with each other and up-to-date in terms of market developments, new products must be included when they achieve a significant relative importance. HICPs must be shown to be based on appropriate sampling procedures, taking into account the national diversity of products and prices. The samples must be kept well up-to-date, in particular by banning the practice whereby *missing* prices are simply assumed to be equal to the last observed prices. In order to measure *pure* price changes, the prices included in HICPs need to be adjusted for changes in the quality of products. Certain inappropriate practices, such as *automatic linking*, have been ruled out in this context. Furthermore, HICPs have to be compiled using specified formulae.

The analysis of sources of inflationary pressure requires a sub-division of HICPs into component parts relating to different product groups. About 100 sub-indices and weights published by Eurostat are based on COICOP/HICP, a version of the international *Classification Of Individual CONsumption by Purpose* adapted for HICPs.

The MUICP is calculated as a weighted average of the euro-zone regardless of its composition. The index is computed as an annual chain index allowing for country weights to change each year as well as allowing for inclusion of additional countries into the euro-zone. The country weight of a Member State is its share of HFMCE in the euro-zone total. Expenditure expressed in the former national currencies is converted into euro using the irrevocably locked conversion rates. The country weights used are based on national accounts data referring to the year ending two calendar years prior to the current year. They are updated to December prices of the latest calendar year prior to the current one.

The European Index of Consumer Prices (EICP) is calculated as an annual chain index for the 15 EU Member States up to 1998. Starting in 1999, the MUICP is treated as a single entity within the EICP. The European Economic Area Index of Consumer Prices (EEAICP) further includes Iceland and Norway. Country weights for the EICP and EEAICP are derived from the value of HFMCE in national currencies (including the euro for the euro-zone) converted into purchasing power standards (PPS). The euro-zone "country weight" reflects its share in the EU and EEA totals.

Greece is included in the MUICP starting with the January 2001 index. The annual rate of change for the MUICP of each current month in 2001 is the change from the corresponding month in 2000 to December 2000 for the eleven euro-zone countries combined with the change from December 2000 to the current month of 2001 for the twelve euro-zone countries. In other words, the euro-zone is treated as an entity regardless of its composition. For analytical purposes Eurostat has made available in NewCronos historic series covering the current twelve Member States of the euro-zone.

Although MUICP weights are updated every year, the inflation rate can be decomposed in an additive way into the sum of the effects of the expenditure groups covered by the index. Hence, it is possible to say how much the various item-groups contribute to the total inflation rate. Eurostat has made these time series available in the NewCronos database.

Technical notes on the HICP and MUICP were given in Eurostat news release 21/97 of 5.3.1997, memo 8/98 of 4.5.1998, and memo 2/00 of 18.2.2000. Further details can be obtained from the 'Compendium of HICP reference documents', Catalogue number 2/2001/B/5.

Further information:

➤ Databases

NewCronos, Theme 2 - Economy and Finance
Prices and purchasing power parities

To obtain information or to order publications, databases and special sets of data, please contact the **Data Shop** network:

| BELGIQUE/BELGIË | DANMARK | DEUTSCHLAND | ESPAÑA | FRANCE | ITALIA – Roma |
|---|---|--|--|--|---|
| Eurostat Data Shop Bruxelles/Brussel Planistat Belgique Rue du Commerce 124 Handelsstraat 124 B-1000 BRUXELLES / BRUSSEL Tel. (32-2) 234 67 50 Fax (32-2) 234 67 51 E-mail: datashop@planistat.be URL: http://www.datashop.org/ | DANMARKS STATISTIK Bibliotek og Information Eurostat Data Shop Sejrogade 11 DK-2100 KØBENHAVN Ø Tlf. (45) 39 17 30 30 Fax (45) 39 17 30 03 E-mail: bjb@dst.dk Internet: http://www.dst.dk/bibliotek | STATISTISCHES BUNDESAMT Eurostat Data Shop Berlin Otto-Braun-Straße 70-72 (Eingang: Karl-Marx-Allee) D-10178 BERLIN Tel. (49) 1888 644 94 27/28 Fax (49) 1888-644 94 30 E-Mail: datashop@destatis.de URL: http://www.eu-datashop.de/ | INE Eurostat Data Shop Paseo de la Castellana, 183 Oficina 011 Entrada por Estébanez Calderón E-28046 MADRID Tel. (34) 91 583 91 67 Fax (34) 91 579 71 20 E-mail: datashop.eurostat@ine.es URL: http://www.datashop.org/ | INSEE Info Service Eurostat Data Shop 195, rue de Bercy Tour Gamma A F-75582 PARIS CEDEX 12 Tél. (33) 1 53 17 88 44 Fax (33) 1 53 17 88 22 E-mail: datashop@insee.fr | ISTAT Centro di Informazione Statistica Sede di Roma, Eurostat Data Shop Via Cesare Balbo, 11a I-00184 ROMA Tel. (39) 06 46 73 31 02/06 Fax (39) 06 46 73 31 01/07 E-mail: dipdiff@istat.it |
| ITALIA – Milano | LUXEMBOURG | NEDERLAND | NORGE | PORTUGAL | SCHWEIZ/SUISSE/SVIZZERA |
| ISTAT Ufficio Regionale per la Lombardia Eurostat Data Shop Via Fieno 3 I-20123 MILANO Tel. (39) 02 80 61 32 460 Fax (39) 02 80 61 32 304 E-mail: mileuro@tin.it | Eurostat Data Shop Luxembourg BP 453 L-2014 LUXEMBOURG 4, rue Alphonse Weicker L-2721 LUXEMBOURG Tél. (352) 43 35-2251 Fax (352) 43 35-22221 E-mail: dslux@eurostat.datashop.lu URL: http://www.datashop.org/ | STATISTICS NETHERLANDS Eurostat Data Shop-Voorburg Postbus 4000 2270 JM VOORBURG Nederland Tel. (31-70) 337 49 00 Fax (31-70) 337 59 84 E-mail: datashop@cbs.nl | Statistics Norway Library and Information Centre Eurostat Data Shop Kongens gate 6 Boks 8131 Dep. N-0033 OSLO Tel. (47) 21 09 46 42/43 Fax (47) 21 09 45 04 E-mail: Datashop@ssb.no | Eurostat Data Shop Lisboa INE/Serviço de Difusão Av. António José de Almeida, 2 P-1000-043 LISBOA Tel. (351) 21 842 61 00 Fax (351) 21 842 63 64 E-mail: data.shop@ine.pt | Statistisches Amt des Kantons Zürich, Eurostat Data Shop Bleicherweg 5 CH-8090 Zürich Tel. (41-1) 225 12 12 Fax (41-1) 225 12 99 E-mail: datashop@statistik.zh.ch Internet: http://www.statistik.zh.ch |
| SUOMI/FINLAND | SVERIGE | UNITED KINGDOM | UNITED STATES OF AMERICA | | |
| STATISTICS FINLAND Eurostat Data Shop Helsinki Tilastokirjasto PL 2B FIN-00022 Tilastokeskus Työpajakatu 13 B, 2.Kerros, Helsinki P. (358-9) 17 34 22 21 F. (358-9) 17 34 22 79 Sähköposti: datashop@stat.fi URL: http://www.tilastokeskus.fi/til/kk/datashop/ | STATISTICS SWEDEN Information service Eurostat Data Shop Karlavägen 100 - Box 24 300 S-104 51 STOCKHOLM Tfn (46-8) 50 69 48 01 Fax (46-8) 50 69 48 99 E-post: infoservice@scb.se Internet: http://www.scb.se/info/datashop/ eudatashop.asp | Eurostat Data Shop Office for National Statistics Room 1.015 Cardiff Road Newport South Wales NP10 8XG United Kingdom Tel. (44-1633) 81 33 69 Fax (44-1633) 81 33 33 E-mail: eurostat.datashop@ons.gov.uk | HAVER ANALYTICS Eurostat Data Shop 60 East 42nd Street Suite 3310 NEW YORK, NY 10165 USA Tel. (1-212) 986 93 00 Fax (1-212) 986 69 81 E-mail: eurodata@haver.com | | |

Media Support Eurostat (for professional journalists only):

Bech Building Office A3/48 • L-2920 Luxembourg • Tel. (352) 4301 33408 • Fax (352) 4301 32649 • e-mail: eurostat-mediasupport@cec.eu.int

For information on methodology

Carsten OLSSON, Eurostat/B3, L-2920 Luxembourg, Tel. (352) 4301 34208, Fax (352) 4301 33989, E-mail: carsten.olsson@cec.eu.int
ORIGINAL: English

Please visit our web site at www.europa.eu.int/comm/eurostat/ for further information!

A list of worldwide sales outlets is available at the **Office for Official Publications of the European Communities**.

2 rue Mercier – L-2985 Luxembourg
Tel. (352) 2929 42118 Fax (352) 2929 42709
Internet Address <http://eur-op.eu.int/tfr/generals-ad.htm>
e-mail: info-info-opo@cec.eu.int

BELGIQUE/BELGIË – DANMARK – DEUTSCHLAND – GREECE/ELLADA – ESPAÑA – FRANCE – IRELAND – ITALIA – LUXEMBOURG – NEDERLAND – ÖSTERREICH
PORTUGAL – SUOMI/FINLAND – SVERIGE – UNITED KINGDOM – ISLAND – NORGE – SCHWEIZ/SUISSE/SVIZZERA – BALGARUA – CESHÁ REPUBLIKA – CYPRUS
EESTI – HRVATSKA – MAGYARORSZÁG – MALTA – POLSKA – ROMÂNIA – RUSSIA – SLOVAKIA – SLOVENIA – TÜRKIYE – AUSTRALIA – CANADA – EGYPT – INDIA
ISRAËL – JAPAN – MALAYSIA – PHILIPPINES – SOUTH KOREA – THAILAND – UNITED STATES OF AMERICA

Order form

I would like to subscribe to Statistics in focus (from 1.1.2002 to 31.12.2002):
(for the Data Shop and sales office addresses see above)

Formula 1: All 9 themes (approximately 180 issues)

Paper: EUR 360

Language required: DE EN FR

Formula 2: One or more of the following nine themes:

Theme 1 'General statistics'

Theme 6 'External trade'

Theme 7 'Transport'

Theme 9 'Science and technology'

Paper: EUR 42

Theme 2 'Economy and finance'

Theme 3 'Population and social conditions'

Theme 4 'Industry, trade and services'

Theme 5 'Agriculture and fisheries'

Theme 8 'Environment and energy'

Paper: EUR 84

Language required: DE EN FR

Statistics in focus can be downloaded (pdf file) free of charge from the Eurostat web site. You only need to register. For other solutions, contact your Data Shop.

Please send me a free copy of 'Eurostat mini-guide' (catalogue containing a selection of Eurostat products and services)

Language required: DE EN FR

I would like a free subscription to 'Statistical References', the information letter on Eurostat products and services

Language required: DE EN FR

Mr Mrs Ms

(Please use block capitals)

Surname: _____ Forename: _____

Company: _____ Department: _____

Function: _____

Address: _____

Post code: _____ Town: _____

Country: _____

Tel.: _____ Fax: _____

E-mail: _____

Payment on receipt of invoice, preferably by:

Bank transfer

Visa Eurocard

Card No: _____ Expires on: _____/_____/_____

Please confirm your intra-Community VAT number:

If no number is entered, VAT will be automatically applied. Subsequent reimbursement will not be possible.