

Harmonized Indices of Consumer Prices August 2001

Statistics in focus

ECONOMY AND FINANCE

THEME 2 – 34/2001

PRICES AND PURCHASING POWER PARITIES

Contents

Price Indices	2
Rates of Change	4
COICOP/HICP Main categories	6
Methodological Notes	7

The rate of inflation for the euro-zone*, as measured by the Monetary Union Index of Consumer Prices (MUICP), was 2.7% comparing August 2001 with August 2000.

Euro-zone data up to end 2000 cover the eleven Member States; with Greece's entry into the euro-zone from the beginning of 2001, they cover the twelve Member States. The euro-zone is treated as an entity regardless of its composition.

The annual rate of change for the euro-zone fell from 2.8% in July to 2.7% in August 2001. A year ago, in August 2000, the corresponding rate was 2.3%.

The rate of inflation in the EU, as measured by the European Index of Consumer Prices (EICP=EU-15), remained stable at 2.6% between July and August 2001**. A year ago, in August 2000, the corresponding rate was 2.0%.

EU Member States with the lowest inflation rates in August 2001 were France (2.0%), Belgium, Denmark and Luxembourg (2.5% each). Highest inflation rates were reported for the Netherlands (5.2%), Greece and Portugal (4.0% each).

The annual rate of inflation for the European Economic Area (EEA) as a whole remained stable at 2.6% in August 2001. A year ago, in August 2000, the corresponding rate was 2.0%. The August annual rate of change decreased from 1.4% to 1.1% in Switzerland***. (No August data available for the USA*** and Japan*** in time for publication).

The inflation rates for the euro-zone, the EU and from August 2000 to August 2001 and for the USA*** and Japan*** from August 2000 to July 2001 are shown in the graph below:

* The euro-zone comprises: Belgium, Germany, Greece (from January 2001), Spain, France, Ireland, Italy, Luxembourg, the Netherlands, Austria, Portugal and Finland.

** Data for the United Kingdom for August 2001 were not available when going to press. Due to this fact, EU-15 (EICP) and EEA (EEAICP) were calculated using Eurostat estimates.

*** For the USA, Japan and Switzerland the national CPIs are given, which are not strictly comparable with the HICPs.

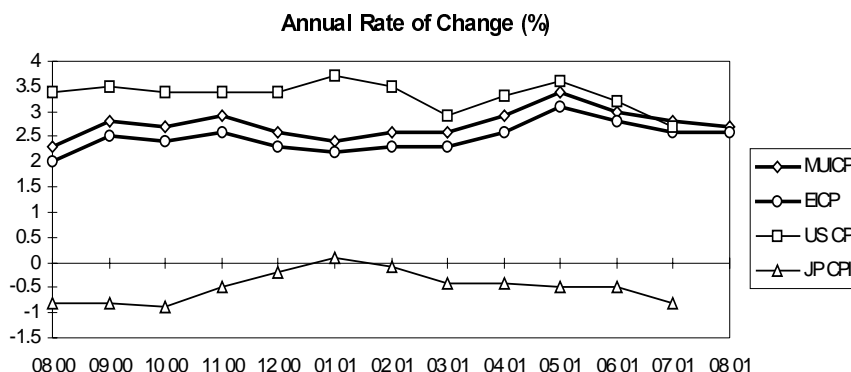


TABLE I HARMONIZED INDICES OF CONSUMER PRICES INDEX NUMBERS												
	Euro-zone (MUICP)	EU-15 (EICP)	B	DK	D	EL	E	F	IRL	I	L	NL
	Annual Average Index											1996 = 100
1997	101.6	101.7	101.5	101.9	101.5	105.4	101.9	101.3	101.2	101.9	101.4	101.9
1998	102.7	103.0	102.4	103.3	102.1	110.2	103.7	102.0	103.4	103.9	102.4	103.7
1999	103.8	104.3	103.6	105.4	102.8	112.6	106.0	102.5	106.0	105.7	103.4	105.8
2000	106.3	106.4	106.4	108.3	104.9	115.8	109.7	104.4	111.5	108.4	107.3	108.2
1999	Monthly Index											
January	102.8	103.2	102.8	103.6	101.9	110.6	104.7	101.6	103.6	104.6	100.8	104.1
February	103.1	103.4	103.0	104.1	102.1	109.8	104.8	102.0	104.3	104.8	102.7	104.8
March	103.4	103.8	103.1	104.7	102.3	112.5	105.2	102.3	104.6	105.0	102.8	105.9
April	103.7	104.2	103.5	105.0	102.7	113.9	105.6	102.6	105.2	105.2	103.3	106.2
May	103.8	104.3	103.7	105.4	102.7	113.6	105.6	102.6	105.9	105.5	103.6	106.2
June	103.8	104.3	103.5	105.7	102.8	113.4	105.6	102.6	106.2	105.5	103.5	105.7
July	104.0	104.3	103.7	105.4	103.3	111.0	106.1	102.3	105.7	105.8	102.2	105.1
August	104.1	104.4	103.5	105.7	103.3	110.9	106.6	102.5	106.4	105.8	103.9	105.8
September	104.1	104.6	103.8	106.1	103.0	113.1	106.8	102.7	106.9	106.1	104.1	106.3
October	104.2	104.6	103.9	106.2	102.9	113.5	106.7	102.8	107.0	106.3	104.4	106.4
November	104.3	104.8	104.1	106.4	103.0	113.7	106.9	102.9	107.2	106.5	104.5	106.6
December	104.7	105.1	104.5	106.6	103.4	114.7	107.3	103.4	108.5	106.7	104.9	106.1
2000	Monthly Index											
January	104.8	105.0	103.1	106.5	103.8	113.2	107.7	103.3	108.2	106.9	104.3	105.8
February	105.2	105.4	105.2	107.0	104.2	112.7	107.9	103.5	109.1	107.3	105.4	106.4
March	105.6	105.8	105.7	107.8	104.4	115.6	108.4	104.0	109.8	107.7	105.9	107.6
April	105.7	106.0	105.9	108.0	104.3	116.3	108.8	104.0	110.5	107.7	106.6	108.0
May	105.8	106.1	106.2	108.4	104.2	116.6	109.0	104.2	111.3	108.1	106.6	108.3
June	106.3	106.5	106.6	108.8	104.9	115.9	109.3	104.5	111.9	108.4	108.1	108.3
July	106.4	106.5	105.5	108.3	105.4	113.9	110.0	104.3	111.9	108.6	107.0	108.0
August	106.5	106.5	107.1	108.0	105.2	114.1	110.4	104.5	112.5	108.6	107.7	108.4
September	107.0	107.1	107.9	109.0	105.7	116.5	110.8	105.1	112.8	108.9	108.5	109.4
October	107.0	107.2	107.7	109.2	105.4	117.8	111.0	105.0	113.4	109.2	108.9	109.8
November	107.3	107.5	107.9	109.3	105.7	118.3	111.3	105.2	113.6	109.6	109.2	109.7
December	107.4	107.5	107.6	109.1	105.8	118.9	111.6	105.2	113.5	109.7	109.4	109.2
2001	Monthly Index											
January	107.3	107.3	105.9	108.9	106.1	116.8	111.8	104.7	112.4	109.8	107.3	110.7#
February	107.9	107.8	107.8	109.5	106.8	116.6	112.2	105.0	113.4	110.2	108.5	111.7#
March	108.3	108.2	108.0	110.2	107.0	119.3	112.7	105.5	114.3	110.5	109.1	113.0#
April	108.8	108.8	109.0	110.8	107.3	120.6	113.2	106.1	115.2	110.9	109.5	113.9#
May	109.4	109.4	109.5	111.4	107.9	121.2	113.6	106.8	115.9	111.2	110.7	114.2#
June	109.5	109.5	109.8	111.2	108.1	121.1	113.9	106.8	116.7	111.5	111.0	113.8#
July	109.4	109.3	108.4	110.8	108.1	118.7	114.1	106.6	116.4	111.6	109.6	113.7#
August	109.4\$	109.4\$	109.8	110.7	107.9	118.7	114.4	106.6\$	116.7	111.6	110.4	114.0\$
September												
October												
November												
December												
	* estimated \$ provisional # revised ! definition differs : Not available											

TABLE II
NATIONAL CPIs
INDEX NUMBERS

A	P	FIN	S	UK	EEAICP	IS	N	CH	US	JP	
								1996 = 100			
101.2	101.9	101.2	101.9	101.8	101.7	101.8	102.6	100.6	102.3	101.7	1997
102.0	104.2	102.6	102.9	103.4	103.1	103.2	104.6	100.5	103.9	102.4	1998
102.5	106.4	103.9	103.4	104.8	104.3	105.4	106.8	101.4	106.2	102.1	1999
104.5	109.4	107.0	104.8	105.6	106.5	110.0	110.0	102.9	109.8	101.4	2000
											1999
102.1	105.3	102.4	102.5	103.7	103.2	103.4	105.7	100.6	104.7	102.2	January
102.3	105.3	102.8	102.6	103.9	103.5	103.3	105.9	100.9	104.9	101.8	February
102.4	105.7	103.0	103.2	104.4	103.9	103.6	106.5	101.1	105.2	101.9	March
102.4	106.4	103.9	103.4	104.9	104.2	104.1	106.8	101.2	106.0	102.4	April
102.5	106.5	104.2	103.7	105.2	104.4	104.6	106.7	101.0	106.0	102.4	May
102.1	106.7	104.2	103.6	105.1	104.3	105.2	106.8	101.1	106.0	102.1	June
102.2	106.7	103.9	103.1	104.4	104.3	105.4	106.5	101.1	106.3	101.7	July
102.4	106.5	104.0	103.1	104.8	104.5	105.9	106.0	101.6	106.5	102.0	August
102.3	106.4	104.5	104.0	105.2	104.6	106.6	106.9	101.8	107.0	102.3	September
102.7	106.6	104.6	104.2	105.1	104.7	107.4	107.5	101.8	107.2	102.5	October
103.0	107.3	104.6	103.8	105.3	104.8	107.3	107.9	101.7	107.3	101.9	November
103.9	107.5	104.9	104.1	105.5	105.2	107.6	108.1	102.1	107.3	101.6	December
											2000
103.5	107.3	104.8	103.5	104.5	105.0	108.2	108.5	102.2	107.6	101.3	January
104.3	107.0	105.6	104.0	104.9	105.4	107.8	109.0	102.6	108.3	101.2	February
104.4	107.2	106.3	104.6	105.1	105.9	108.4	109.3	102.6	109.1	101.4	March
104.2	108.4	106.5	104.4	105.5	106.0	109.4	109.7	102.6	109.2	101.6	April
104.1	109.1	107.0	105.0	105.7	106.1	109.8	109.8	102.6	109.3	101.7	May
104.5	109.7	107.4	105.0	105.9	106.6	110.2	110.5	103.0	109.9	101.4	June
104.2	110.2	106.9	104.4	105.4	106.5	110.9	110.0	103.0	110.2	101.2	July
104.3	110.3	107.0	104.5	105.4	106.6	110.2	109.7	102.8	110.2	101.2	August
104.7	110.2	108.1	105.4	106.2	107.2	110.4	110.7	103.3	110.7	101.5	September
105.0	110.5	108.2	105.6	106.1	107.2	111.5	110.8	103.2	110.9	101.6	October
105.4	111.2	108.1	105.7	106.4	107.5	111.7	111.2	103.7	111.0	101.4	November
105.8	111.6	107.9	105.5	106.4	107.6	111.6	111.0	103.6	110.9	101.4	December
											2001
105.8	112.0	107.8	105.2	105.4	107.3	111.9	111.9	103.5	111.6	101.4	January
106.2	112.2	108.5	105.6	105.7	107.9	112.0	112.8	103.4	112.1	101.1	February
106.4	112.7	109.0	106.4	106.1	108.3	112.8	113.1	103.6	112.3	101.0	March
106.9	113.4	109.5	107.5	106.7	108.8	114.2	113.7	103.8	112.8	101.2	April
107.1	114.4	110.5	108.3	107.5	109.5	116.0	114.2	104.4	113.2	101.2	May
107.2	114.7	110.6	108.1	107.7	109.6	118.1	114.2	104.6	113.4	100.9	June
107.2#	114.9	109.7	107.4	106.9	109.3	119.1	112.4	104.4	113.2	100.4	July
107.0\$	114.7	109.9	107.6	:	109.4\$	119.1	112.1	103.9	:	:	August
											September
											October
											November
											December

* estimated \$ provisional # revised ! definition differs : Not available

TABLE III
HARMONIZED INDICES OF CONSUMER PRICES
RATES OF CHANGE (%)

	Euro-zone (MUICP)	EU-15 (EICP)	B	DK	D	EL	E	F	IRL	I	L	NL
	Annual Average Rate of Change											
	1996 = 100											
1998	1.1	1.3	0.9	1.3	0.6	4.5	1.8	0.7	2.1	2.0	1.0	1.8
1999	1.1	1.2	1.1	2.1	0.6	2.1	2.2	0.6	2.5	1.7	1.0	2.0
2000	2.3	2.1	2.7	2.7	2.1	2.9	3.5	1.8	5.3	2.6	3.8	2.3
2001 (Aug)	2.8\$	2.5\$	3.0	2.5	2.7	3.7	4.0	2.0\$	4.5	2.8	3.4	4.4\$
	Annual Rate of Change											
	(t/t-12)											
1999												
January	0.8	0.9	1.0	1.2	0.2	3.3	1.5	0.3	2.1	1.5	-1.4	2.1
February	0.8	1.0	1.0	1.3	0.1	3.1	1.8	0.3	2.3	1.4	0.6	2.0
March	1.0	1.2	1.3	1.7	0.5	3.0	2.1	0.4	2.0	1.4	0.6	2.0
April	1.1	1.2	1.1	1.7	0.8	2.6	2.3	0.5	2.0	1.3	1.3	1.9
May	1.0	1.1	0.8	1.6	0.4	2.0	2.1	0.4	2.3	1.5	1.3	2.1
June	0.9	1.0	0.7	1.9	0.4	1.5	2.1	0.3	2.1	1.4	1.2	2.1
July	1.1	1.1	0.7	2.0	0.6	1.6	2.1	0.4	1.9	1.7	-0.3	1.8
August	1.2	1.2	0.9	2.4	0.7	1.4	2.3	0.5	2.4	1.6	1.4	2.5
September	1.2	1.2	1.3	2.4	0.8	1.3	2.5	0.6	2.6	1.9	1.6	2.0
October	1.4	1.3	1.4	2.6	0.9	1.7	2.4	0.8	2.8	1.9	1.9	1.8
November	1.5	1.4	1.6	2.7	1.0	2.0	2.7	1.0	3.0	2.0	1.9	2.0
December	1.7	1.7	2.1	3.1	1.4	2.3	2.8	1.4	3.9	2.1	2.3	1.9
	Annual Rate of Change											
	(t/t-12)											
2000												
January	1.9	1.8	0.3	2.8	1.9	2.4	2.9	1.7	4.4	2.2	3.5	1.6
February	2.0	1.9	2.1	2.8	2.1	2.6	3.0	1.5	4.6	2.4	2.6	1.5
March	2.1	1.9	2.5	3.0	2.1	2.8	3.0	1.7	5.0	2.6	3.0	1.6
April	1.9	1.7	2.3	2.9	1.6	2.1	3.0	1.4	5.0	2.4	3.2	1.7
May	1.9	1.7	2.4	2.8	1.5	2.6	3.2	1.6	5.1	2.5	2.9	2.0
June	2.4	2.1	3.0	2.9	2.0	2.2	3.5	1.9	5.4	2.7	4.4	2.5
July	2.3	2.1	1.7	2.8	2.0	2.6	3.7	2.0	5.9	2.6	4.7	2.8
August	2.3	2.0	3.5	2.2	1.8	2.9	3.6	2.0	5.7	2.6	3.7	2.5
September	2.8	2.5	3.9	2.7	2.6	3.0	3.7	2.3	5.5	2.6	4.2	2.9
October	2.7	2.4	3.7	2.8	2.4	3.8	4.0	2.1	6.0	2.7	4.3	3.2
November	2.9	2.6	3.7	2.7	2.6	4.0	4.1	2.2	6.0	2.9	4.5	2.9
December	2.6	2.3	3.0	2.3	2.3	3.7	4.0	1.7	4.6	2.8	4.3	2.9
	Annual Rate of Change											
	(t/t-12)											
2001												
January	2.4	2.2	2.7	2.3	2.2	3.2	3.8	1.4	3.9	2.7	2.9	4.6#
February	2.6	2.3	2.5	2.3	2.5	3.5	4.0	1.4	3.9	2.7	2.9	5.0#
March	2.6	2.3	2.2	2.2	2.5	3.2	4.0	1.4	4.1	2.6	3.0	5.0#
April	2.9	2.6	2.9	2.6	2.9	3.7	4.0	2.0	4.3	3.0	2.7	5.5#
May	3.4	3.1	3.1	2.8	3.6	3.9	4.2	2.5	4.1	2.9	3.8	5.4#
June	3.0	2.8	3.0	2.2	3.1	4.5	4.2	2.2	4.3	2.9	2.7	5.1#
July	2.8	2.6	2.7	2.3	2.6	4.2	3.7	2.2	4.0	2.8	2.4	5.3#
August	2.7\$	2.6\$	2.5	2.5	2.6	4.0	3.6	2.0\$	3.7	2.8	2.5	5.2\$
September												
October												
November												
December												
	* estimated \$ provisional # revised ! definition differs : Not available											

TABLE IV
NATIONAL CPIs
RATES OF CHANGE (%)

A	P	FIN	S	UK	EEAICP	IS	N	CH	US	JP	
								1996 = 100			
0.8	2.2	1.4	1.0	1.6	1.3	1.3	2.0	0.0	1.6	0.6	1998
0.5	2.2	1.3	0.6	1.3	1.2	2.1	2.1	0.8	2.2	-0.3	1999
2.0	2.8	3.0	1.3	0.8	2.1	4.4	3.0	1.6	3.4	-0.7	2000
2.4\$	4.3	3.0	2.1	:	2.5\$	5.0	3.2	1.4	:	:	2001 (Aug)
											1999
0.3	2.5	0.5	0.0	1.6	1.0	0.4	2.0	0.1	1.7	0.2	January
0.2	2.7	0.9	0.2	1.5	1.0	0.5	2.0	0.3	1.6	-0.1	February
0.2	2.8	0.9	0.5	1.7	1.2	0.5	2.0	0.5	1.7	-0.4	March
0.1	2.7	1.3	0.3	1.5	1.2	0.8	2.2	0.6	2.3	-0.1	April
0.4	2.1	1.4	0.3	1.3	1.1	1.0	2.2	0.6	2.1	-0.4	May
0.2	2.1	1.2	0.4	1.4	1.0	1.3	2.1	0.6	2.0	-0.3	June
0.3	1.9	1.4	0.2	1.3	1.1	2.0	1.7	0.7	2.1	-0.1	July
0.5	1.8	1.3	0.8	1.3	1.2	3.1	1.7	0.9	2.3	0.3	August
0.6	1.9	1.4	1.1	1.2	1.2	3.8	1.8	1.2	2.6	-0.2	September
0.8	1.8	1.6	1.0	1.2	1.3	4.2	2.4	1.2	2.6	-0.7	October
1.0	1.9	1.9	0.8	1.3	1.4	3.8	2.6	1.3	2.6	-1.2	November
1.7	1.7	2.2	1.2	1.2	1.7	4.4	2.7	1.7	2.7	-1.1	December
											2000
1.4	1.9	2.3	1.0	0.8	1.8	4.6	2.6	1.6	2.7	-0.9	January
2.0	1.6	2.7	1.4	1.0	1.9	4.4	2.9	1.6	3.2	-0.6	February
2.0	1.4	3.2	1.4	0.7	1.9	4.6	2.6	1.5	3.8	-0.5	March
1.8	1.9	2.5	1.0	0.6	1.7	5.1	2.7	1.4	3.1	-0.8	April
1.6	2.4	2.7	1.3	0.5	1.7	5.0	2.9	1.6	3.2	-0.7	May
2.4	2.8	3.1	1.4	0.8	2.1	4.8	3.5	1.8	3.7	-0.7	June
2.0	3.3	2.9	1.3	1.0	2.1	5.2	3.3	1.9	3.7	-0.5	July
1.9	3.6	2.9	1.4	0.6	2.0	4.1	3.5	1.1	3.4	-0.8	August
2.3	3.6	3.4	1.3	1.0	2.5	3.6	3.6	1.4	3.5	-0.8	September
2.2	3.7	3.4	1.3	1.0	2.4	3.8	3.1	1.3	3.4	-0.9	October
2.3	3.6	3.3	1.8	1.0	2.6	4.1	3.1	1.9	3.4	-0.5	November
1.8	3.8	2.9	1.3	0.9	2.3	3.7	2.7	1.5	3.4	-0.2	December
											2001
2.2	4.4	2.9	1.6	0.9	2.2	3.4	3.1	1.3	3.7	0.1	January
1.8	4.9	2.7	1.5	0.8	2.3	3.9	3.5	0.8	3.5	-0.1	February
1.9	5.1	2.5	1.7	1.0	2.3	4.1	3.5	1.0	2.9	-0.4	March
2.6	4.6	2.8	3.0	1.1	2.6	4.4	3.6	1.2	3.3	-0.4	April
2.9	4.9	3.3	3.1	1.7	3.1	5.6	4.0	1.8	3.6	-0.5	May
2.6	4.6	3.0	3.0	1.7	2.8	7.2	3.3	1.6	3.2	-0.5	June
2.9#	4.3	2.6	2.9	1.4	2.6	7.4	2.2	1.4	2.7	-0.8	July
2.6\$	4.0	2.7	3.0	:	2.6\$	8.1	2.2	1.1	:	:	August
											September
											October
											November
											December

* estimated \$ provisional # revised ! definition differs : Not available

TABLE V
MAIN CATEGORIES OF HARMONIZED INDICES OF CONSUMER PRICES

ANNUAL RATES OF CHANGE (%)

COICOP /HICP Code	COICOP/HICP Divisions	Euro-zone (MUICP)	EU-15 (EICP)	B	DK	D	EL	E	F	IRL	I	L	NL	A	P	FIN	S	UK	EEAICP	IS	N
		Annual Rate of Change																			
		August 2001 / August 2000																			
00.	HICP (all-items index)	2.7\$	2.6\$	2.5	2.5	2.6	4.0	3.6	2.0\$	3.7	2.8	2.5	5.2\$	2.6\$	4.0	2.7	3.0	:	2.6\$	8.1	2.2
01.	FOOD AND NON-ALCOHOLIC BEVERAGES	5.7\$	5.7\$	5.1	4.7	5.4	6.0	6.9	6.1\$	6.7	4.7	5.1	7.4\$	3.4\$	5.8	5.1	3.8	:	5.5\$	9.4	-6.1
02.	ALCOHOLIC BEVERAGES AND TOBACCO	3.0\$	2.9\$	1.6	1.5	2.0	11.2	2.7	3.3\$	2.2	3.4	3.5	7.1\$	4.2\$	4.0	1.6	1.3	:	2.9\$	8.6	3.1
03.	CLOTHING AND FOOTWEAR	1.1\$	1.6\$	0.9	-0.6	0.9	2.4	2.7	0.4\$	-1.9	2.9	2.3	1.4\$	-0.9\$	0.7	0.7	0.2	:	1.5\$	2.9	-2.8
04.	HOUSING, WATER, ELECTRICITY, GAS AND OTHER FUELS	3.5\$	3.5\$	4.4	3.3	4.2	4.7	3.5	1.2\$	6.4	2.2	2.0	6.6\$	3.1\$	3.6	3.1	6.3	:	3.6\$	4.5	12.5
05.	FURNISHINGS, HOUSEHOLD EQUIPMENT AND ROUTINE MAINTENANCE OF THE HOUSE	2.1\$	2.6\$	3.2	1.7	1.1	2.6	2.9	2.1\$	3.1	2.1	2.5	5.5\$	1.2\$	3.4	2.3	2.8	:	2.6\$	8.0	0.7
06.	HEALTH	1.2\$	1.4\$	1.3	7.5	1.1	2.8	1.9	-0.4\$	6.6	-1.5	1.6	8.0\$	10.2\$	3.7	2.3	4.7	:	1.4\$	4.9	2.8
07.	TRANSPORT	1.0\$	0.8\$	0.9	1.0	1.4	0.6	0.7	0.4\$	-3.5	1.0	0.5	1.8\$	1.2\$	4.3	0.4	-0.2	:	0.8\$	9.3	2.1
08.	COMMUNICATIONS	-2.6\$	-2.3\$	-8.6	-2.0	-2.0	-1.3	-1.5	-3.8\$	-9.3	-2.6	-16.3	-0.9\$	1.9\$	-2.3	3.0	6.2	:	-2.3\$	7.6	-2.1
09.	RECREATION AND CULTURE	1.4\$	1.7\$	2.5	0.7	1.3	4.2	-1.2	0.6\$	5.0	1.9	2.7	4.9\$	2.1\$	2.6	3.5	2.2	:	1.6\$	8.5	0.7
10.	EDUCATION	3.0\$:	1.6	2.8	1.6	3.8	4.9	2.2\$	7.0	3.3	0.0	3.2\$	2.5\$	5.0	3.6	3.4	:	:	7.2	4.9
11.	RESTAURANTS AND HOTELS	3.7\$	4.2\$	2.2	2.6	1.6	5.4	6.9	2.7\$	5.7	4.4	3.0	5.9\$	3.0\$	3.9	2.9	3.5	:	4.2\$	8.1	4.3
12.	MISCELLANEOUS GOODS AND SERVICES	3.2\$	3.3\$	2.6	5.1	2.8	3.3	3.9	2.7\$	5.6	4.4	4.5	4.9\$	2.5\$	5.5	3.5	3.6	:	3.3\$	11.9	3.3

* estimated \$ provisional # revised ! definition differs : Not available

➤ METHODOLOGICAL NOTES

Harmonized Indices of Consumer Prices (HICPs) are produced and published monthly. They are central indicators for ESCBs/ECBs single monetary policy for the euro-zone as they form the basis of the Monetary Union Index of Consumer Prices (MUICP). HICPs provide the best statistical basis for international comparisons of consumer price inflation in the European perspective. HICPs cover virtually all areas of household final monetary consumption expenditure (HFMCE).

The relative distribution of consumers' expenditure on individual products varies from country to country. Hence, there is no *uniform basket* applying to all Member States. Owner occupiers' shelter costs, where expressed as imputed rents or mortgage interest payments, are not regarded as part of the inflationary process and hence excluded.

The weights used in the compilation of HICPs may relate to a reference period up to seven years prior to the current year. However, adjustments must be made each year for especially large changes in the expenditure pattern. This minimises disparities arising from different up-date frequencies.

In order to keep HICPs broadly in step with each other and up-to-date in terms of market developments, new products must be included when they achieve a significant relative importance. HICPs must be shown to be based on appropriate sampling procedures, taking into account the national diversity of products and prices. The samples must be kept well up-to-date, in particular by banning the practice whereby *missing* prices are simply assumed to be equal to the last observed prices. In order to measure *pure* price changes, the prices included in HICPs need to be adjusted for changes in the quality of products. Certain inappropriate practices, such as *automatic linking*, have been ruled out in this context. Furthermore, HICPs have to be compiled using specified formulae.

The analysis of sources of inflationary pressure requires a sub-division of HICPs into component parts relating to different product groups. About 100 sub-indices and weights published by Eurostat are based on COICOP/HICP, a version of the international *Classification Of Individual CONsumption by Purpose* adapted for HICPs.

The MUICP is calculated as a weighted average of the euro-zone regardless of its composition. The index is computed as an annual chain index allowing for country weights to change each year as well as allowing for inclusion of additional countries into the euro-zone. The country weight of a Member State is its share of HFMCE in the euro-zone total. Expenditure expressed in the former national currencies is converted into euro using the irrevocably locked conversion rates. The country weights used are based on national accounts data referring to the year ending two calendar years prior to the current year. They are updated to December prices of the latest calendar year prior to the current one.

The European Index of Consumer Prices (EICP) is calculated as an annual chain index for the 15 EU Member States up to 1998. Starting in 1999, the MUICP is treated as a single entity within the EICP. The European Economic Area Index of Consumer Prices (EEAICP) further includes Iceland and Norway. Country weights for the EICP and EEAICP are derived from the value of HFMCE in national currencies (including the euro for the euro-zone) converted into purchasing power standards (PPS). The euro-zone "country weight" reflects its share in the EU and EEA totals.

Greece is included in the MUICP starting with the January 2001 index. The annual rate of change for the MUICP of each current month in 2001 will be the change from the corresponding month in 2000 to December 2000 for the eleven euro-zone countries combined with the change from December 2000 to the current month of 2001 for the twelve euro-zone countries. In other words, the euro-zone is treated as an entity regardless of its composition. For analytical purposes Eurostat has made available in NewCronos historic series covering the current twelve Member States of the euro-zone.

Although MUICP weights are updated every year, the inflation rate can be decomposed in an additive way into the sum of the effects of the expenditure groups covered by the index. Hence, it is possible to say how much the various item-groups contribute to the total inflation rate. Eurostat will start making these time series available in the NewCronos database.

Technical notes on the HICP and MUICP were given in Eurostat news release 21/97 of 5.3.1997, memo 8/98 of 4.5.1998, and memo 2/00 of 18.2.2000. Further details can be obtained from the Commission report to the Council on the harmonization of consumer price indices, COM(2000)742, Catalogue number KT-CO-00-176-EN-C.

Further information:

➤ Databases

New Cronos
Theme 2 - Economy and Finance
Prices and Purchasing Power Parities

To obtain information or to order publications, databases and special sets of data, please contact the **Data Shop** network:

BELGIQUE/BELGIË	DANMARK	DEUTSCHLAND	ESPAÑA	FRANCE	ITALIA – Roma
Eurostat Data Shop Bruxelles/Brussel Planistat Belgique Rue du Commerce 124 Handelsstraat 124 B-1000 BRUXELLES / BRUSSEL Tel. (32-2) 234 67 50 Fax (32-2) 234 67 51 E-mail: datashop@planistat.be	DANMARKS STATISTIK Bibliotek og Information Eurostat Data Shop Sejrøgade 11 DK-2100 KØBENHAVN Ø Tlf. (45) 39 17 30 30 Fax (45) 39 17 30 03 E-mail: bib@dst.dk	STATISTISCHES BUNDESAMT Eurostat Data Shop Berlin Otto-Braun-Straße 70-72 (Eingang: Karl-Marx-Allee) D-1 0178 BERLIN Tel. (49) 1888 644 94 27/28 Fax (49) 1888-644 94 30 E-Mail: datashop@statistik-bund.de	INE Eurostat Data Shop Paseo de la Castellana, 183 Oficina 009 Entrada por Estébanez Calderón E-28046 MADRID Tel. (34) 91 583 91 67 Fax (34) 91 579 71 20 E-mail: datashop.eurostat@ine.es	INSEE Info Service Eurostat Data Shop 195, rue de Bercy Tour Gamma A F-75582 PARIS CEDEX 12 Tél. (33) 1 53 17 88 44 Fax (33) 1 53 17 88 22 E-mail: datashop@insee.fr	ISTAT Centro di Informazione Statistica Sede di Roma, Eurostat Data Shop Via Cesare Balbo, 11a I-00184 ROMA Tel. (39) 06 46 73 31 02/06 Fax (39) 06 46 73 31 01/07 E-mail: dipdiff@istat.it
ITALIA – Milano	LUXEMBOURG	NEDERLAND	NORGE	PORTUGAL	SCHWEIZ/SUISSE/SVIZZERA
ISTAT Ufficio Regionale per la Lombardia Eurostat Data Shop Via Fieno 3 I-20123 MILANO Tel. (39) 02 80 61 32 46/00 Fax (39) 02 80 61 32 30/4 E-mail: mileuro@tin.it	Eurostat Data Shop Luxembourg BP 453 L-2014 LUXEMBOURG 4, rue Alphonse Weicker L-2721 LUXEMBOURG Tel. (352) 43 35-2251 Fax (352) 43 35-22221 E-mail: dslux@urostat.datashop.lu	STATISTICS NETHERLANDS Eurostat Data Shop-Voorburg Postbus 4000 2270 JM VOORBURG Nederland Tel. (31-70) 337 49 00 Fax (31-70) 337 59 84 E-mail: datashop@csb.nl	Statistics Norway Library and Information Centre Eurostat Data Shop Kongens gate 6 Boks 8131 Dep. N-0033 OSLO Tel. (47) 21 09 46 42/43 Fax (47) 21 09 45 04 E-mail: Datashop@ssb.no	Eurostat Data Shop Lisboa INE/Serviço de Difusão Av. António José de Almeida, 2 P-1000-043 LISBOA Tel. (351) 21 842 61 00 Fax (351) 21 842 63 64 E-mail: data.shop@ine.pt	Statistisches Amt des Kantons Zürich, Eurostat Data Shop Bleicherweg 5 CH-8090 Zürich Tel. (41-1) 225 12 12 Fax (41-1) 225 12 99 E-mail: datashop@statistik.zh.ch Internet: http://www.zh.ch/statistik
SUOMI/FINLAND	SVERIGE	UNITED KINGDOM	UNITED KINGDOM	UNITED STATES OF AMERICA	
STATISTICS FINLAND Eurostat Data Shop Helsinki Tilastokijasto PL 2B FIN-00022 Tilastokeskus Työpajakatu 13 B, 2.Kerros, Helsinki P. (358-9) 17 34 22 21 F. (358-9) 17 34 22 79 Sähköposti: datashop.tilastokeskus.fi@tilastokeskus.fi Internet: http://www.tilastokeskus.fi/tilkk/tilkk/datashop.html	STATISTICS SWEDEN Information service Eurostat Data Shop Karlavägen 100 · Box 24 300 S-104 51 STOCKHOLM Tfn (46-8) 50 69 48 01 Fax (46-8) 50 69 48 99 E-post: infoservice@scb.se Internet: http://www.scb.se/finfo/datascho p/eudatashop.asp	Eurostat Data Shop Enquiries & advice and publications Office for National Statistics Customers & Electronic Services Unit 1 Drummond Gate · B1/05 LONDON SW1V 2QQ United Kingdom Tel. (44-20) 75 33 56 76 Fax (44-1633) 81 27 62 E-mail: eurostat.datasshop@ons.gov.uk	Eurostat Data Shop Electronic Data Extractions, Enquiries & advice - R.CADE 1L Mountjoy Research Centre University of Durham DURHAM DH1 3SW United Kingdom Tel: (44-191) 374 73 50 Fax: (44-191) 384 49 71 E-mail: rcade@dur.ac.uk Internet: http://www.rcade.dur.ac.uk	HAVER ANALYTICS Eurostat Data Shop 60 East 42nd Street Suite 3310 NEW YORK, NY 10165 USA Tel. (1-212) 986 93 00 Fax (1-212) 986 69 81 E-mail: eurodata@haver.com	

Media Support Eurostat (for professional journalists only):

Bech Building Office A3/48 · L-2920 Luxembourg · Tel. (352) 4301 33408 · Fax (352) 4301 32649 · e-mail: eurostat-mediasupport@cec.eu.int

For information on methodology:

Carsten OLSSON, Eurostat/B3, L-2920 Luxembourg, Tel. (352) 4301 34208, Fax (352) 4301 33989, E-mail: carsten.olsson@cec.eu.int
ORIGINAL: English

Please visit our web site at www.europa.eu.int/comm/eurostat/ for further information!

A list of worldwide sales outlets is available at the **Office for Official Publications of the European Communities**.

2 rue Mercier - L-2985 Luxembourg
Tel. (352) 2929 42118 Fax (352) 2929 42709
Internet Address <http://eur-op.eu.int/ffr/general/s-ad.htm>
e-mail: info-info-opoce@cec.eu.int

BELGIQUE/BELGIË - DANMARK - DEUTSCHLAND - GREECE/ELLADA - ESPAÑA - FRANCE - IRELAND - ITALIA - LUXEMBOURG - NEDERLAND - ÖSTERREICH
PORTUGAL - SUOMI/FINLAND - SVERIGE - UNITED KINGDOM - ISLAND - NORGE - SCHWEIZ/SUISSE/SVIZZERA - BALGARJA - CĚSKÁ REPUBLIKA - CYPRUS
EESTI - HRVATSKA - MAGYARORSZÁG - MALTA - POLSKA - ROMÂNIA - RUSSIA - SLOVAKIA - SLOVENIA - TÜRKIYE - AUSTRALIA - CANADA - EGYPT - INDIA
ISRAEL - JAPAN - MALAYSIA - PHILIPPINES - SOUTH KOREA - THAILAND - UNITED STATES OF AMERICA

Order form

I would like to subscribe to Statistics in focus (from 1.1.2001 to 31.12.2001):
(for the Data Shop and sales office addresses see above)

Formula 1: All 9 themes (approximately 140 issues)

Paper: EUR 360
Language required: DE EN FR

Formula 2: One or more of the following seven themes:

- Theme 1 'General statistics'
 - Paper: EUR 42
- Theme 2 'Economy and finance'
- Theme 3 'Population and social conditions'
- Theme 4 'Industry, trade and services'
- Theme 5 'Agriculture and fisheries'
- Theme 6 'External trade'
- Theme 8 'Environment and energy'
 - Paper: EUR 84

Language required: DE EN FR

Statistics in focus can be downloaded (pdf file) free of charge from the Eurostat web site. You only need to register. For other solutions, contact your Data Shop.

Please send me a free copy of 'Eurostat mini-guide' (catalogue containing a selection of Eurostat products and services)
Language required: DE EN FR

I would like a free subscription to 'Statistical References', the information letter on Eurostat products and services
Language required: DE EN FR

Mr Mrs Ms

(Please use block capitals)

Surname: _____ Forename: _____

Company: _____ Department: _____

Function: _____

Address: _____

Post code: _____ Town: _____

Country: _____

Tel.: _____ Fax: _____

E-mail: _____

Payment on receipt of invoice, preferably by:

- Bank transfer
 Visa Eurocard

Card No: _____ Expires on: ____/____/____

Please confirm your intra-Community VAT number:

If no number is entered, VAT will be automatically applied. Subsequent reimbursement will not be possible.