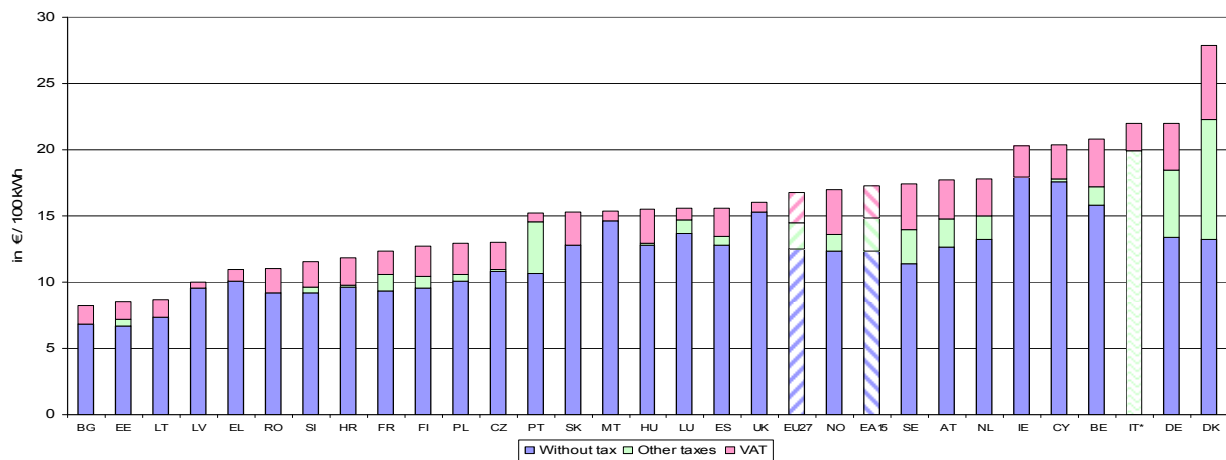


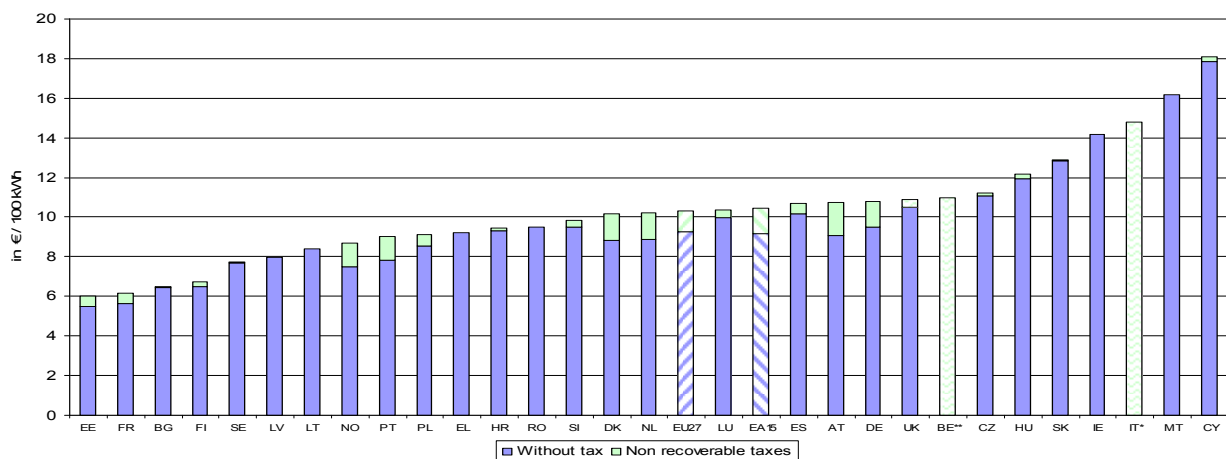
## Electricity prices for second semester 2008

### Electricity prices for household consumers<sup>(1)</sup>



Source: Eurostat ([nrg\\_pc\\_204](#))

### Electricity prices for industrial consumers<sup>(2)</sup>



Source: Eurostat ([nrg\\_pc\\_205](#))

<sup>(1)</sup> 'Household consumers' refer to consumer band Dc (annual consumption between 2500 and 5000 kWh)

<sup>(2)</sup> 'Industrial consumers' refer to consumer band Ic (annual consumption between 500 and 2000 MWh)

\* Level 1 price data (all taxes excluded) for household and industrial consumers is missing for Italy

\*\* Level 1 price data (all taxes excluded) for industrial consumers is missing for Belgium

## Electricity prices for household<sup>(1)</sup> and industrial<sup>(2)</sup> consumers (in € per 100 kWh)

	EU27	EA15	BE	BG	CZ	DK	DE	EE	IE	EL	ES	FR	IT	CY	LV	LT
Households	16.73	17.26	20.81	8.23	12.99	27.85	21.95	8.50	20.33	10.99	15.57	12.32	21.95	20.40	10.03	8.65
Industry	10.29	10.45	10.96	6.49	11.21	10.19	10.78	6.01	14.19	9.20	10.68	6.15	14.81	18.07	7.96	8.38

	LU	HU	MT	NL	AT	PL	PT	RO	SI	SK	FI	SE	UK	HR	NO
Households	15.56	15.53	15.36	17.80	17.72	12.95	15.25	11.03	11.56	15.27	12.73	17.46	16.03	11.84	17.00
Industry	10.34	12.18	16.19	10.20	10.72	9.10	9.01	9.50	9.85	12.90	6.74	7.73	10.88	9.47	8.71

Source: Eurostat ([nrg\\_pc\\_204](#), [nrg\\_pc\\_205](#))

## Electricity prices for household<sup>(1)</sup> and industrial<sup>(2)</sup> consumers (in national currency per 100 kWh for non-Euro Area countries)

	BG	CZ	DK	EE	LV	LT	HU	PL	RO	SK	SE	UK	HR	NO
Households	16.10	321.00	207.63	133.00	7.09	29.85	3878.00	45.81	40.76	463.00	172.00	13.10	85.00	144.46
Industry	12.70	277.00	76.00	94.00	5.63	28.95	3041.00	32.18	35.12	391.00	76.20	8.89	68.00	74.04

Source: Eurostat ([nrg\\_pc\\_204](#), [nrg\\_pc\\_205](#))

## Share of taxes paid by end-users

### Share of taxes for household consumers<sup>(1)</sup>:

	Basic price	Other taxes (excl. VAT)	VAT	All Taxes
	in € per 100 kWh			in %
UK	15.30	0.00	0.73	4.6
LV	9.56	0.00	0.47	4.7
MT	14.63	0.00	0.73	4.8
EL	10.05	0.00	0.94	8.6
IE	17.91	0.00	2.42	11.9
LU	13.70	0.98	0.88	12.0
CY	17.54	0.22	2.64	14.0
LT	7.32	0.00	1.33	15.4
SK	12.83	0.00	2.44	16.0
RO	9.20	0.00	1.83	16.6
BG	6.85	0.00	1.38	16.8
CZ	10.80	0.12	2.07	16.9
HU	12.81	0.13	2.59	17.5
ES	12.77	0.65	2.15	18.0
HR	9.61	0.14	2.09	18.8
SI	9.19	0.45	1.92	20.5
EE	6.70	0.51	1.29	21.2
PL	10.05	0.57	2.33	22.4
BE	15.78	1.42	3.61	24.2
FR	9.31	1.26	1.75	24.4
FI	9.55	0.88	2.30	25.0
NL	13.20	1.80	2.80	25.8
NO	12.37	1.23	3.40	27.2
AT	12.68	2.08	2.96	28.4
PT	10.66	3.87	0.72	30.1
SE	11.37	2.63	3.46	34.9
DE	13.41	5.02	3.52	38.9
DK	13.23	9.05	5.57	52.5
IT*	:	:	:	:

### Share of taxes for industrial consumers<sup>(2)</sup>:

	Basic price	Non recoverable taxes	Non recoverable taxes
	in € per 100 kWh		in %
LV	7.96	0.00	0.0
LT	8.38	0.00	0.0
EL	9.20	0.00	0.0
RO	9.50	0.00	0.0
MT	16.19	0.00	0.0
IE	14.19	0.00	0.0
SK	12.83	0.07	0.5
SE	7.68	0.05	0.6
BG	6.44	0.05	0.8
CZ	11.08	0.13	1.2
CY	17.85	0.22	1.2
HR	9.33	0.14	1.5
HU	11.95	0.23	1.9
LU	9.99	0.35	3.4
SI	9.51	0.34	3.5
UK	10.50	0.38	3.5
FI	6.47	0.27	4.0
ES	10.16	0.52	4.9
PL	8.53	0.57	6.3
EE	5.50	0.51	8.5
FR	5.61	0.54	8.8
DE	9.51	1.27	11.8
NL	8.90	1.30	12.7
DK	8.85	1.34	13.2
PT	7.81	1.20	13.3
NO	7.48	1.23	14.1
AT	9.05	1.67	15.6
IT*	:	:	:
BE**	:	:	:

Source: Eurostat ([nrg\\_pc\\_204](#))

Source: Eurostat ([nrg\\_pc\\_205](#))

<sup>(1)</sup> 'Household consumers' refer to consumer band Dc (annual consumption between 2500 and 5000 kWh) - prices include all taxes

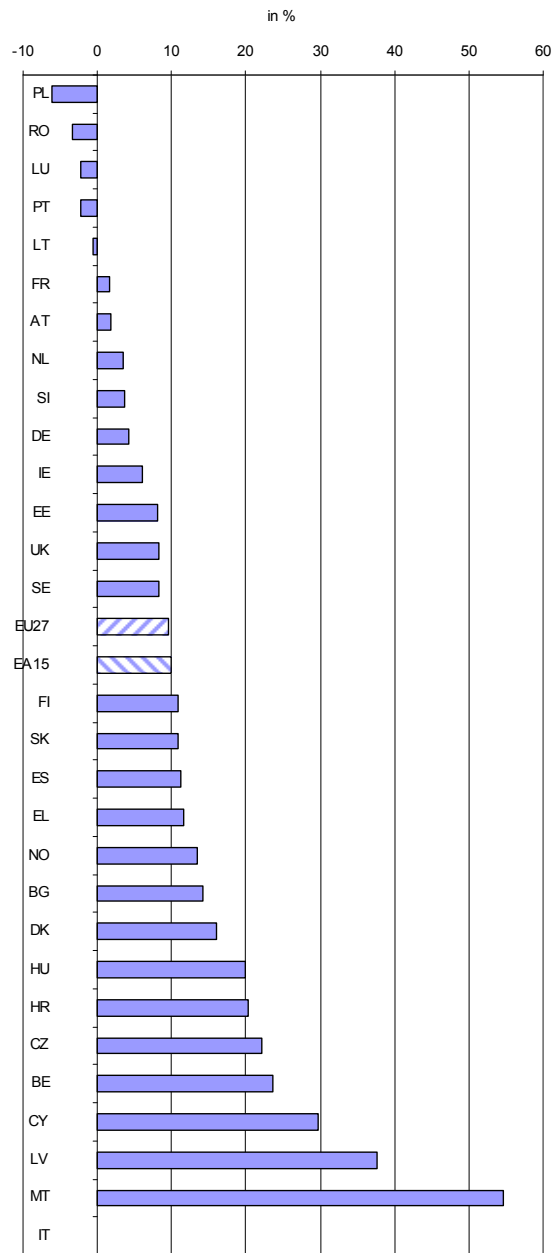
<sup>(2)</sup> 'Industrial consumers' refer to consumer band Ic (annual consumption between 500 and 2000 MWh) - prices exclude recoverable taxes and VAT

\* Level 1 price data (all taxes excluded) for household and industrial consumers is missing for Italy

\*\* Level 1 (all taxes excluded) and level 3 price data (all taxes included) for industrial consumers is missing for Belgium

**Electricity prices for household consumers<sup>(1)</sup> (all taxes included) – comparison between second semester 2007 and second semester 2008 (in %)**

	2007s2	2008s1	2008s2	$\frac{2008s2}{2007s2}$
	in € per 100 kWh			in %
PL	13.80	12.59	12.95	-6.16
RO	11.41	10.61	11.03	-3.33
LU	15.91	15.91	15.56	-2.20
PT	15.59	14.80	15.25	-2.18
LT	8.70	8.60	8.65	-0.57
FR	12.13	12.13	12.32	1.57
AT	17.40	17.79	17.72	1.84
NL	17.20	17.30	17.80	3.49
SI	11.16	11.47	11.56	3.58
DE	21.05	21.48	21.95	4.28
IE	19.18	17.69	20.33	6.00
EE	7.86	8.14	8.50	8.14
UK	14.81	14.58	16.03	8.24
SE	16.13	16.98	17.46	8.25
EU27	15.26	15.93	16.73	9.63
EA15	15.71	16.54	17.26	9.87
FI	11.49	12.23	12.73	10.79
SK	13.77	13.65	15.27	10.89
ES	14.00	13.66	15.57	11.21
EL	9.84	10.47	10.99	11.69
NO	14.98	16.39	17.00	13.48
BG	7.21	7.11	8.23	14.15
DK	24.01	26.35	27.85	15.99
HU	12.96	15.48	15.53	19.83
HR	9.84	9.90	11.84	20.33
CZ	10.63	12.74	12.99	22.20
BE	16.83	19.72	20.81	23.65
CY	15.73	17.80	20.40	29.69
LV	7.29	8.42	10.03	37.59
MT	9.93	9.93	15.36	54.68
IT	:	20.79	21.95	:



Percentage change in electricity prices for household consumers, 2007s2 and 2008s2

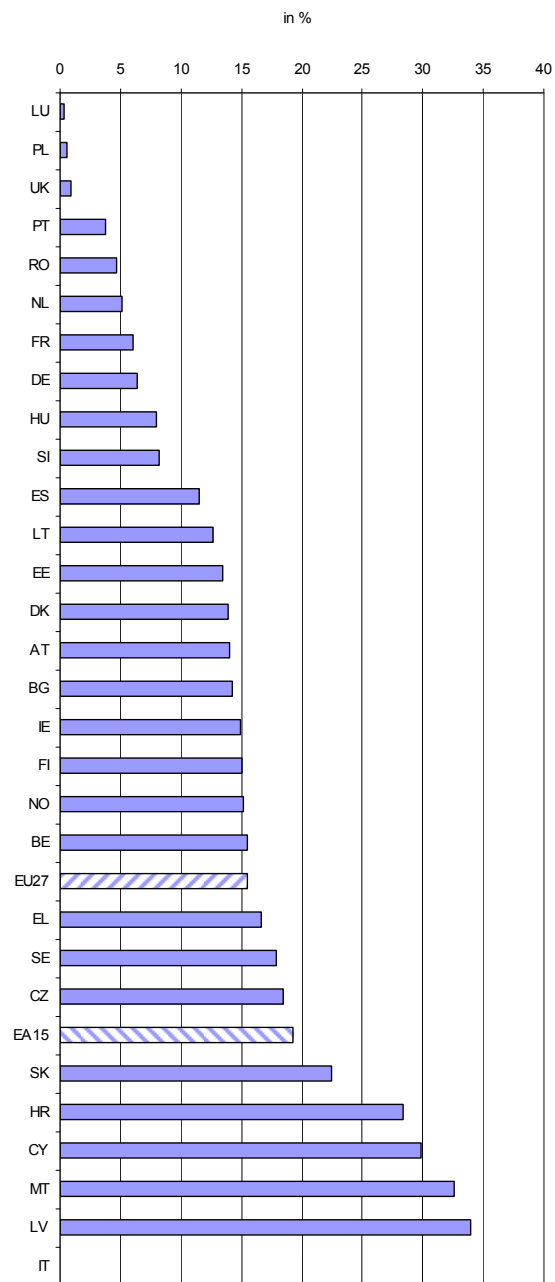
Source: Eurostat ([nrg\\_pc\\_204](#))

Source: Eurostat ([nrg\\_pc\\_204](#))

<sup>(1)</sup> 'Household consumers' refer to consumer band Dc (annual consumption between 2500 and 5000 kWh)

**Electricity prices for industrial consumers<sup>(1)</sup> (VAT and all other recoverable taxes and levies excluded) – comparison between second semester 2007 and second semester 2008 (in %)**

	2007s2	2008s1	2008s2	$\frac{2008s2}{2007s2}$
	in € per 100 kWh			in %
LU	10.31	10.31	10.34	0.29
PL	9.05	8.81	9.10	0.55
UK	10.78	9.77	10.88	0.93
PT	8.68	8.95	9.01	3.80
RO	9.08	8.86	9.50	4.63
NL	9.70	9.90	10.20	5.15
FR	5.80	6.41	6.15	6.03
DE	10.13	10.53	10.78	6.42
HU	11.28	11.42	12.18	7.98
SI	9.10	9.32	9.85	8.24
ES	9.58	9.61	10.68	11.48
LT	7.44	8.29	8.38	12.63
EE	5.30	5.67	6.01	13.40
DK	8.95	9.13	10.19	13.85
AT	9.40	10.64	10.72	14.04
BG	5.68	5.62	6.49	14.26
IE	12.35	13.02	14.19	14.90
FI	5.86	6.40	6.74	15.02
NO	7.56	7.84	8.71	15.21
BE	9.49	10.69	10.96	15.49
EU27	8.91	9.78	10.29	15.49
EL	7.89	8.61	9.20	16.60
SE	6.56	6.93	7.73	17.84
CZ	9.46	11.07	11.21	18.50
EA15	8.76	10.07	10.45	19.29
SK	10.53	11.51	12.90	22.51
HR	7.38	7.56	9.47	28.32
CY	13.91	14.27	18.07	29.91
MT	12.21	12.21	16.19	32.60
LV	5.94	6.60	7.96	34.01
IT	:	13.99	14.81	:



Source: Eurostat ([nrg\\_pc\\_205](#))

Source: Eurostat ([nrg\\_pc\\_205](#))

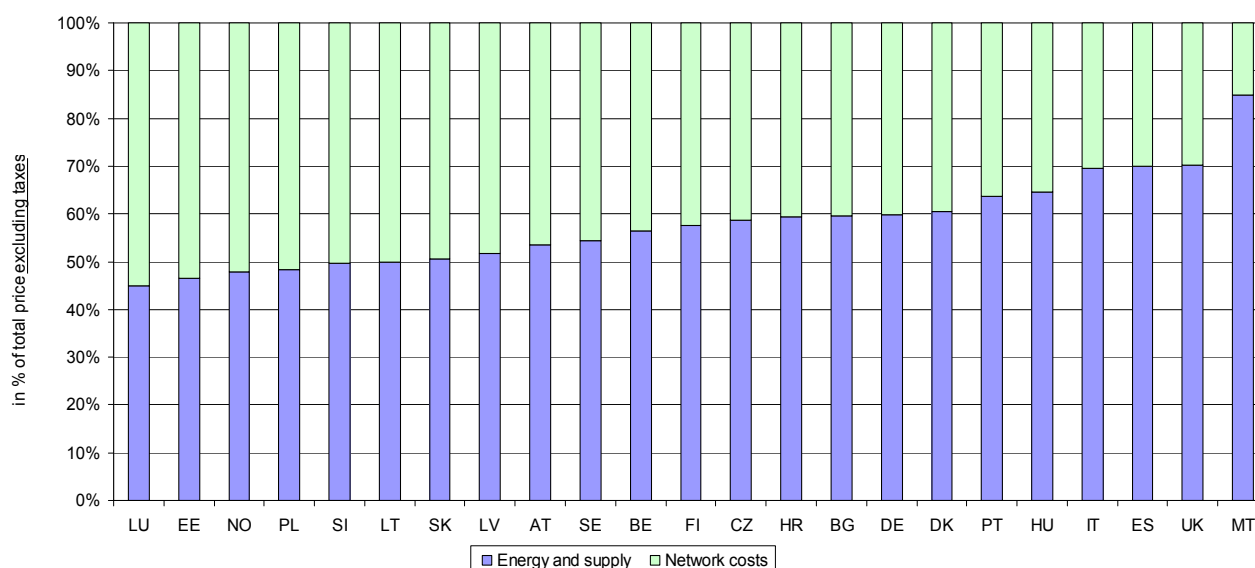
<sup>(1)</sup> 'Industrial consumers' refer to consumer band Ic (annual consumption between 500 and 2000 MWh)

## Disaggregated prices for household consumers<sup>(1)</sup>

	Composition of the household prices in € per 100 kWh				Share in price without tax (%)	
	TOTAL PRICE	Energy and supply	Network costs	Taxes and levies	Energy and supply	Network costs
DE	21.95	8.01	5.40	8.54	59.7	40.3
UK	16.03	10.65	4.53	0.73	70.2	29.8
FR	12.32	.	.	.	.	.
IT	21.95	11.13e	4.86e	5.37e	69.6	30.4
NL	17.80	.	.	.	.	.
BE	20.81	8.95e	6.88e	3.62e	56.5	43.5
DK	27.85	8.05	5.23	14.62	60.6	39.4
EL	10.99	.	.	.	.	.
IE	20.33	.	.	.	.	.
LU	15.56	6.16	7.54	1.86	45.0	55.0
PT	15.25	6.99e	3.98e	4.28e	63.7	36.3
ES	15.57	8.94	3.83	2.80	70.0	30.0
AT	17.72	6.78	5.91	5.03	53.4	46.6
SE	17.46	6.20	5.18	6.11	54.5	45.5
FI	12.73	5.50	4.05	3.18	57.6	42.4
CY	20.40	.	.	.	.	.
CZ	12.99	6.35e	4.45e	2.18e	58.8	41.2
HU	15.53	8.28	4.53	2.72	64.7	35.3
LV	10.03	4.93	4.63	0.48	51.6	48.4
LT	8.65	3.65	3.68	1.32	49.8	50.2
SK	15.27	6.50	6.33	2.44	50.6	49.4
MT	15.36	12.39e	2.20e	0.77e	84.9	15.1
BG	8.23	4.09	2.76	1.38	59.7	40.3
RO	11.03	3.57	5.63	1.82	38.8	61.2
EE	8.50	3.11	3.59	1.81	46.5	53.5
SI	11.56	4.57	4.62	2.37	49.7	50.3
PL	12.95	4.86	5.19	2.90	48.4	51.6
HR	11.84	5.71	3.90	2.23	59.4	40.6
NO	17.00	5.91	6.46	4.63	47.8	52.2

Source: Eurostat

## Share in price (in %)



Source: Eurostat

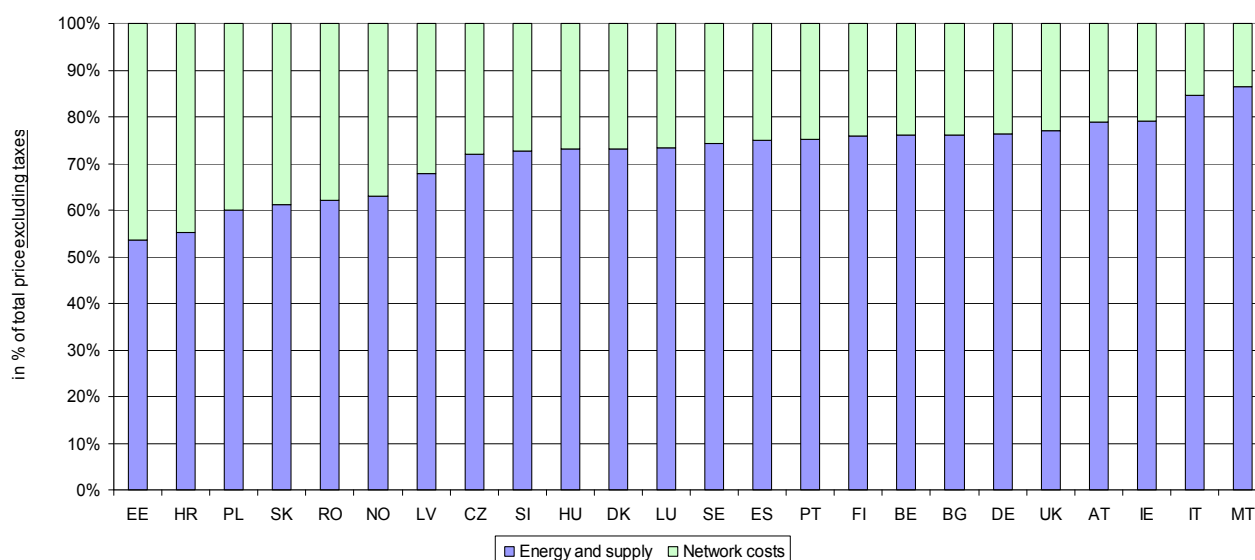
<sup>(1)</sup> 'Household consumers' refer to consumer band Dc (annual consumption between 2500 and 5000 kWh)

## Disaggregated prices for industrial consumers<sup>(1)</sup>

	Composition of the industrial prices in € per 100 kWh				Share in price without tax (%)	
	TOTAL PRICE	Energy and supply	Network costs	Non-recoverable taxes and levies	Energy and supply	Network costs
DE	10.78	7.25	2.26	1.27	76.2	23.8
UK	10.88	8.08	2.41	0.39	77.0	23.0
FR	6.15	.	.	.	.	.
IT	14.81	10.28e	1.87e	2.26e	84.6	15.4
NL	10.20	.	.	.	.	.
BE	10.96	7.73e	2.43e	0.00e	76.1	23.9
DK	10.19	6.57	2.41	1.34	73.1	26.9
EL	9.20	.	.	.	.	.
IE	14.19	10.72e	2.83e	0.00e	79.1	20.9
LU	10.34	7.33	2.66	0.35	73.4	26.6
PT	9.01	5.88	1.94	1.19	75.2	24.8
ES	10.68	7.62	2.54	0.52	75.0	25.0
AT	10.72	7.13	1.92	1.67	78.8	21.2
SE	7.73	5.70	1.98	0.05	74.2	25.8
FI	6.74	4.91	1.56	0.26	75.9	24.1
CY	18.07	.	.	.	.	.
CZ	11.21	7.97e	3.12e	2.27e	71.9	28.1
HU	12.18	8.72	3.22	0.24	73.0	27.0
LV	7.96	5.40	2.56	0.00	67.8	32.2
LT	8.38	3.72	4.67	0.00	44.3	55.7
SK	12.90	7.85	4.98	0.07	61.2	38.8
MT	16.19	13.99e	2.20e	0.81e	86.4	13.6
BG	6.49	4.91	1.53	0.05	76.2	23.8
RO	9.50	5.89	3.61	0.00	62.0	38.0
EE	6.01	2.94	2.56	0.51	53.5	46.5
SI	9.85	6.90	2.61	0.34	72.6	27.4
PL	9.10	5.11	3.42	0.57	59.9	40.1
HR	9.47	5.15	4.18	0.14	55.2	44.8
NO	8.71	4.71	2.77	1.24	63.0	37.0

Source: Eurostat

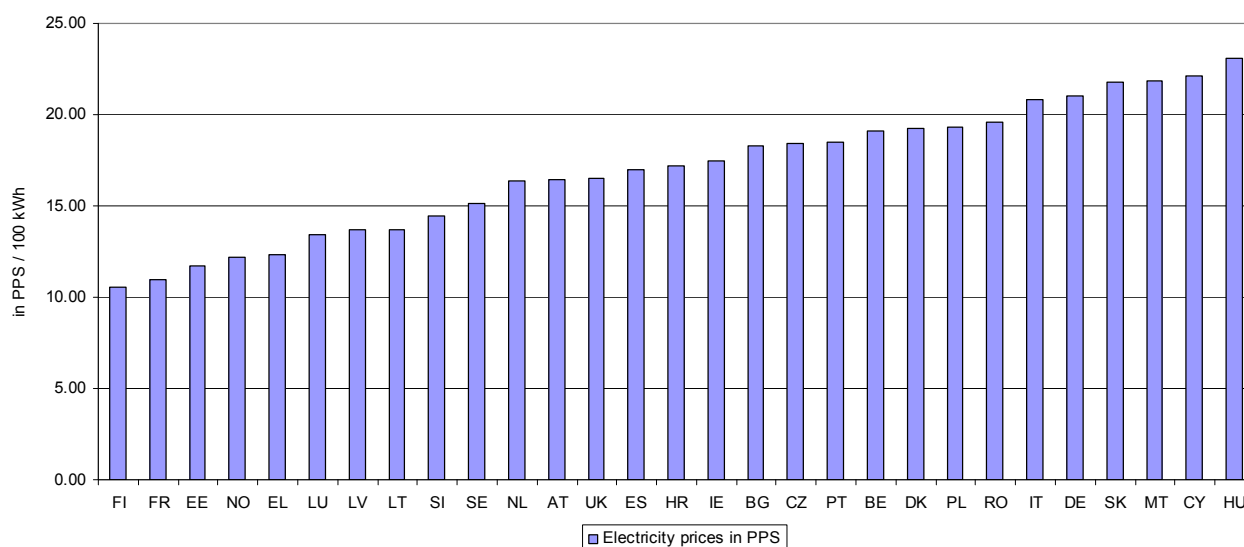
## Share in price (in %)



Source: Eurostat

<sup>(1)</sup> 'Industrial consumers' refer to consumer band Ic (annual consumption between 500 and 2000 MWh)

## Electricity prices in purchasing power standards (PPS) for household consumers<sup>(1)</sup> (all taxes included)



Source: Eurostat ([nrg\\_pc\\_204](#))

## Electricity prices in purchasing power standards (PPS) for household consumers<sup>(1)</sup> (all taxes included)

	BE	BG	CZ	DK	DE	EE	IE	EL	ES	FR	IT	CY	LV	LT	LU
Households	19.10	18.29	18.45	19.27	21.00	11.74	17.46	12.32	16.96	10.99	20.84	22.14	13.68	13.69	13.45

	HU	MT	NL	AT	PL	PT	RO	SI	SK	FI	SE	UK	HR	NO
Households	23.10	21.82	16.34	16.41	19.33	18.48	19.58	14.48	21.75	10.54	15.15	16.48	17.18	12.16

Source: Eurostat ([nrg\\_pc\\_204](#))

<sup>(1)</sup> 'Household consumers' refer to consumer band Dc (annual consumption between 2500 and 5000 kWh)

## Comments

All price data for Italy is provisional.

Level 1 price data (all taxes excluded) for household and industrial consumers are missing for Italy.

Level 1 (all taxes excluded) and level 3 price data (all taxes included) for industrial consumers are missing for Belgium.

Price data for Malta is an average of two quarters (July 2008 - September 2008, October 2008 - December 2008) since the price system was changed from 1 October 2008.

Disaggregated price data is missing for Ireland (for household consumers), France, Netherlands, Greece and Cyprus.

### EU aggregates:

**EU-27** = aggregated prices for 27 EU Member States weighted by consumption.

**EA-15** = aggregated prices for 15 Euro Area Member States weighted by consumption (Euro Area countries: Belgium, Germany, Ireland, Greece, Spain, France, Italy, Cyprus, Luxembourg, Malta, Netherlands, Austria, Portugal, Slovenia and Finland).

## Comments

---

### Exchange rates:

Prices for the standard consumers are given in national currencies, PPS (Purchasing Power Standard, annual estimated value) and in euro (average exchange rate second semester 2008).

"e" = estimated value

":" = not available

kWh = kilowatt-hour

MWh = megawatt-hour

## Methodology

---

### Methodology for the collection of electricity prices

The legal basis for the collection of industrial gas and electricity prices is defined by Council Directive 90/377/EEC. The collection of prices for household consumers is done on a voluntary agreement with the Member States.

The collection of price information includes:

- National average prices;
- Average for the last 6 months;
- Prices are reported for different consumption bands.

Annual consumption (MWh)		
Industrial end-users	Lowest	Highest
Band Ia		< 20
Band Ib	20	< 500
Band Ic	500	< 2 000
Band Id	2 000	< 20 000
Band Ie	20 000	< 70 000
Band If	70 000	≤ 150 000

Annual consumption (kWh)		
Household end-users	Lowest	Highest
Band Da		< 1 000
Band Db	1 000	< 2 500
Band Dc	2 500	< 5 000
Band Dd	5 000	< 15 000
Band De	≥ 15 000	

## Further information

---

### European Statistical Data Support:

Contact details for this support network can be found on our Internet site:

<http://ec.europa.eu/eurostat/>

### Data

Data on "Energy":

<http://epp.eurostat.ec.europa.eu/portal/page/portal/energy/data/database>

More information about "Energy":

<http://epp.eurostat.ec.europa.eu/portal/page/portal/energy/introduction>

---

Manuscript completed on: 14.07.2009

Data extracted on: 15.06.2009

ISSN 1977-0316

Catalogue number: KS-QA-09-025-EN-N

© European Communities, 2009