

International Migration Statistics in the Mediterranean Countries: Current data sources and statistics available from international organisations

(3/1998/E/n° 12)



EUROPEAN
COMMISSION



THEME 3
Population
and social
conditions

3

TABLE OF CONTENTS

	Page
1. Introduction	3
2. Summary	3
2.1 Project countries	3
2.2 Stocks	3
2.3 Flows	4
3. Individual project countries – main trends, 1986-1995	4
Algeria	6
Morocco	8
Tunisia	10
Turkey	12
Lebanon	14
Egypt	15
Other mediterranean countries	16

List of Graphs

Immigration of Mediterranean Citizens 1986-1995	19
Emigration of Mediterranean Citizens 1986-1995	20
Mediterranean Citizens (1) 1986-1995	21
Mediterranean Citizens (2) 1986-1995	22

List of Tables

Population by citizenship 1 January 1995	18
Immigration of Algerian Citizens into EU, by EU country : 1986-1995	23
Immigration of Moroccan Citizens into EU, by EU country : 1986-1995	24
Immigration of Tunisian Citizens into EU, by EU country : 1986-1995	25
Immigration of Turkish Citizens into EU, by EU country : 1986-1995	26
Immigration of Lebanese Citizens into EU, by EU country : 1986-1995	27
Immigration of Egyptian Citizens into EU, by EU country : 1986-1995	28
Immigration of other mediterranean countries into EU, by EU country : 1986-1995	29
Emigration of Algerian Citizens from EU, by EU country : 1986-1995	30
Emigration of Moroccan Citizens from EU, by EU country : 1986-1995	31

Emigration of Tunisian Citizens from EU, by EU country : 1986-1995	32
Emigration of Turkish Citizens from EU, by EU country : 1986-1995	33
Emigration of Lebanese Citizens from EU, by EU country : 1986-1995	34
Emigration of Egyptian Citizens from EU, by EU country : 1986-1995	35
Emigration of Other mediterranean countries from EU, by EU country : 1986-1995	36
Algerian citizens in EU, by EU country: 1986-1995	37
Moroccan citizens in EU, by EU country: 1986-1995	38
Tunisian citizens in EU, by EU country: 1986-1995	39
Turkish citizens in EU, by EU country: 1986-1995	40
Lebanese citizens in EU, by EU country: 1986-1995	41
Egyptian citizens in EU, by EU country: 1986-1995	42
Citizens of other mediterranean countries in EU, by EU country: 1986-1995	43

CURRENT DATA SOURCES AND STATISTICS AVAILABLE FROM INTERNATIONAL ORGANISATIONS, INCLUDING A DESCRIPTION OF FLOWS AND STOCKS

Migration between the Mediterranean basin and European Union countries, 1986-1995

1. Introduction

The three main sources of information which have been used for the analysis of flows and stocks are:

1. The UN 1989 Demographic Year Book
2. "Migration from African and Eastern Mediterranean Countries to Western European" by Jeannette J Schoorl, Bart J de Bruijn, Erwin J Kuiper and Liesbeth Heering (paper presented at the 1996 Mediterranean Conference on Population, Migration and Development in Palma de Mallorca, 15-17 October 1996).
3. Statistics in Focus (Eurostat) article by Ann Singleton, Karine Sahli and June Bowman (paper issued at First Steering Committee meeting of MED-MIGR in Nicosia, 19-20 January 1998, and since published).

(There are insufficient data in the responses received to the MED-MIGR questionnaires to provide more up-to-date information).

The inventory of statistics at the end of the report demonstrates that there are large gaps in the information available for individual countries, and major differences in information between countries.

2. Summary

2.1 Project countries

- The twelve Mediterranean basic project countries included are: Algeria, Cyprus, Egypt, Israel, Jordan, Lebanon, Malta, Morocco, Palestine, Syria, Tunisia and Turkey.

2.2 Stocks

- On 1 January 1995, the European Union (EU) had a population of 370 million, 5 million (1.3 per cent) of which were citizens of a Mediterranean

project country. These represent 28 per cent of all non-nationals residing in the fifteen EU member states.

- The majority (80 per cent) of the 5 million project country citizens are concentrated in two EU countries: Germany (46 per cent) and France (34 per cent). In Germany, nearly all (90 per cent) are Turks.
- The proportion of all non-nationals in a country who are project country citizens is highest in the Netherlands (47 per cent) and in France (45 per cent). In Germany, the figure is only 32 per cent because of the large number of citizens of Central European countries.

2.3 Flows

- 1995 Immigrants

During 1995, Germany, France, Netherlands, Belgium, the UK and Italy received more than 90 per cent of the 152,000 project country citizens immigrating to the EU. Over half of them (nearly 60 per cent) went to Germany (91,000).

- 1986-1995 Immigrants

During the period 1986-1995, nearly 50 per cent of all project country immigrants went to Germany. If France, Netherlands and Italy are included the percentage is nearly 90 per cent.

During the ten year period, nearly 1 million Turks immigrated to the EU, the vast majority (77 per cent) went to Germany, followed by Netherlands (10 per cent) and France (6 per cent). The next largest group were Moroccans with 350,000 immigrating mainly to France (116,000), but also to Netherlands (73,000) Italy (59,000) and Germany (48,000).

- Emigrants

Most citizens of project countries who emigrate from the EU, either back to their country of origin or to another country, emigrate from Germany.

3. **Individual project countries - main trends, 1986-1995**

Main trends, by individual year, in flows and stocks between the Mediterranean project countries and the EU receiving countries are shown in the attached individual project country reports. There is a separate report and statistical tables for each of Algeria, Morocco, Tunisia, Turkey, Lebanon and Egypt. There is a

combined report and statistical tables for the other countries (i.e. Cyprus, Malta, Israel, Jordan, Palestine and Syria).

N.B. All the figures in the reports and tables relate to citizens, not to country of last/next residence.

There are three table types:-

- immigration of project country citizens into the EU
- emigration of project country citizens from the EU
- project country citizens in the EU.

For each table type there is also a summary diagram.

The individual receiving countries are shown in the tables and reports as one of two main groups:

- EU Mediterranean Countries, comprising Portugal, Spain, France, Italy and Greece;
- Other EU Countries, comprising Germany, the Benelux countries (Belgium, Luxembourg, Netherlands), the United Kingdom, Ireland, Austria and the Nordic countries, (Denmark, Finland and Sweden).

(The Benelux countries, and the Nordic countries, are grouped together because this is how they have been treated in the base document 'Migration from African and Eastern Mediterranean Countries to Western Europe').

There is an additional table which gives, as at 1 January 1995, the percentage of the project country citizens in the total population, and in the non-national population, for each of the EU receiving countries.

ALGERIA: MAIN TRENDS 1986-1995

FLOWS

The main migratory trends are:

EU Mediterranean Countries

Immigration into EU Mediterranean Countries

- France is the most important receiving country. Migration from Algeria increased from 5,300 in 1986 to 12,300 in 1993 but has since rapidly declined, to 7,100 in 1995.

Emigration from EU Mediterranean Countries

- No emigration data are available for the EU Mediterranean countries.

Other EU Countries

Immigration into Other EU Countries

- Germany is the only country apart from France that counts as a major destination for migrants from Algeria, especially since 1992. There were 10,700 Algerian immigrants in 1993, but this has declined to 3,000 in 1995.

Emigration from Other EU Countries

- Emigration of Algerian nationals from Germany has increased from 600 in 1990 to 3,300 in 1995, peaking at 4,700 in 1993.

STOCKS

The main trends are:

EU Mediterranean Countries

- In 1975, France had more than 1.1 million residents with Maghreb nationality of which 711,000 (64%) were from Algeria. By 1985 the Algerian population was 821,000 but since then (alongwith the Moroccan population) the figures have declined. Since 1989, with the exception of 1992, the Algerian population has been between 610 and 620 thousand.
- Between 1986 and 1995, the Algerian population in Portugal, Spain, Italy and Greece has been relatively small, peaking at just over 7,000 in 1994.

Other EU Countries

- Sizeable populations from Algeria are found in Belgium and Germany (10,000 and 19,000 respectively in 1995).

MOROCCO: MAIN TRENDS 1986-1995

FLOWS

The main migratory trends are:

- During the period 1986-1995, 350,000 Moroccans citizens immigrated to the EU, mainly to France (116,000), but also to the Netherlands (73,000), Italy (59,000) and Germany (48,000). Moroccans formed the second largest group of immigrants, after Turks, to the EU during the ten year period.

EU Mediterranean Countries

Immigration into EU Mediterranean Countries

- Moroccans dominate immigration of Maghrebian citizens to the 5 EU Mediterranean countries (Portugal, Spain, France, Italy and Greece).
- France is the most important receiving country. Moroccan immigration to France grew from 8,200 in 1986 to 17,800 in 1991, and then declined, in 1994 especially, to 6,300 in 1995.
- There has been an influx to Italy. Moroccans (and Tunisians) formed 20% of all non-nationals immigrating into Italy during 1986-1995. Work-related admissions were the major category. The figures, though distorted by the effect of regularisations in 1987 and 1990, show that Italy experienced an increase in immigration from Morocco from 300 in 1986 to 9,600 in 1991. Figures for subsequent years indicate a decrease, at least in legal migration.
- Migrants to Spain are less than one might expect on the basis of distance and ease of communication. The sudden increase of Moroccan immigrants, from 1,900 in 1991 to 4,500 in 1992, was mainly due to regularisations. In 1995 there were 3,800 officially registered Moroccan immigrants.

Emigration from EU Mediterranean Countries

- No emigration data are available for the EU Mediterranean countries, other than for Italy for 1995 when 200 Moroccans emigrated.

Other EU Countries

Immigration into Other EU Countries

- The Benelux countries (in particular, Netherlands and Belgium) are the major countries of destination for Moroccans in the Other EU Countries. There were 6,700 immigrants in 1995, down from 12,400 in 1990.
- There is a steady flow to Germany. There were 3,800 immigrants in 1995, down from 6,500 in 1992.

Emigration from Other EU Countries

- Emigration of Moroccan nationals from Germany has increased from 1,300 in 1986 to 2,800 in 1995. Emigration from the Benelux countries has declined from 3,500 in 1986 to 1,500 in 1995.

STOCKS

The main trends are:

EU Mediterranean Countries

- France has had a large Moroccan population for a long period of time: 260,000 Moroccan nationals in 1975, rising to 606,000 in 1988. These figures exceed the natural increase rate, and result from the reunification of families. The figure for 1995 is 573,000.
- The Moroccan population in Portugal, Spain, Italy and Greece combined, rose from 9,000 to 157,000 in the years 1986 to 1995, particularly in Spain (64,000) and Italy (93,000). There were two regularisation programmes in Spain, in 1986 and 1991.

Other EU Countries

- Moroccan citizens form (after the Turks) the second largest group of nationalities of project countries in the Other EU Countries. They are concentrated in Belgium and the Netherlands (144,000 and 159,000 respectively in 1995) and to a lesser extent Germany (82,000 in 1995). Originally, migration was primary related to the needs of the labour market. In the last decade, growth may be attributed to both natural increase and immigration as a result of family reunification, and family formation.

TUNISIA: MAIN TRENDS 1986-1995

FLOWS

The main migratory trends are:

EU Mediterranean Countries

Immigration into EU Mediterranean Countries

- In the total of Maghrebian migration to EU Mediterranean countries, Tunisians takes the smallest share.
- Most Tunisians (between 70 and 80% of them) go to France, but there has been a decline in numbers, from 4,300 in 1989 to 1,900 in 1995.
- Italy became an important host country for Tunisians during the late 1980s. The figures, though distorted by the effect of regularisations in 1987 and 1990, show that Italy experienced an increase in immigration from Tunisia, from 500 in 1986 to 5,100 in 1991. Figures for subsequent years indicate a decrease at least in legal migration. Most Tunisian immigrants to Italy are young, single men with an average age of a little over 26.

Emigration from EU Mediterranean Countries

- No emigration data are available for the EU Mediterranean countries, other than for Italy for 1995 when 100 Tunisians emigrated.

Other EU Countries

Immigration/Emigration into/from Other EU Countries

- There has been a small steady flow of Tunisians to Germany (2,100 in 1995), offset by emigration (1,900 in 1995).

STOCKS

The main trends are

EU Mediterranean Countries

- The population of Tunisians in France has stabilised since the mid-80s at just over 200,000.
- The number of Tunisians in Italy increased from 4,000 in 1986 to 50,000 in 1993 and 35,000 in 1994. The cause of the decline is probably the strict application of measures governing the renewal of residence permits. This is likely to have been offset by Tunisians immigrating illegally into Italy.

Other EU Countries

- There is a sizeable population of Tunisians in Germany (27,000 in 1995), where women and children account for nearly 50% of all Tunisians living there.

TURKEY: MAIN TRENDS 1986 - 1995

FLOWS

The main migratory trends are:

- During the period 1986-1995, nearly 1 million Turkish citizens, the largest number from a project country, immigrated to the EU, the vast majority to Germany (77%), followed by the Netherlands (10%) and France (6%). Despite a relatively steady decline since 1991, some 91,000 Turks immigrated to the EU in 1995.
- The majority of migration were spouses or future spouses, arriving through family formation migration. There were also migration under the conventional family reunification schemes.
- In addition to family-oriented migration, Turkish immigration to the EU accelerated in the late 1980s and early 1990s mainly because a large number of Turks began to apply for asylum in the EU. Despite a decline, the annual figure is 24,000 currently: over three quarters seeking asylum in Germany.

EU Mediterranean Countries

Immigration into EU Mediterranean Countries

- Turkish migration to EU Mediterranean countries is almost exclusively restricted to France. Migration of Turks to France increased from 5,400 in 1986 to 9,300 in 1992, then fell to 3,000 by 1995.

Emigration from EU Mediterranean Countries

- No emigration data are available for EU Mediterranean countries.

Other EU Countries

Immigration into Other EU Countries

- Germany receives by far the largest number of Turkish migrants to the EU. Although there has been a decline since 1989 (74,500 in 1995 against 86,400 in 1989), Turks are the largest group of project country immigrants to Germany.
- For the Benelux countries, Turks are the largest group of immigrants (7,300 in 1995 but this is fewer than the 15,600 in 1991). The Netherlands has, after Germany, the second largest flow of Turkish migration to the EU.
- Immigration to the UK has been steady, between an estimated 900 and 1600 since 1985 (based on a small sample), increasing to about 2,000 in 1994 and 3,800 in 1995.
- Immigration by Turks to Austria has been approximately 8,000 per year since 1989.

Emigration from Other EU Countries

- During 1986-1995, most of the emigrants from the Other EU Countries were Turks (494,000 or 76% of all the project country emigrants). In the main they went from Germany to Turkey.

STOCKS

The main trends are:

EU Mediterranean Countries

- In France, the number of Turks has increased from 51,000 in 1975 to 155,000 in 1986, to 197,000 in 1995 (after peaking at 240,000 in 1992 and 1993).
- The Turkish population in Portugal, Spain, Italy and Greece is relatively small, just over 4,000 in 1995.

Other EU Countries

- The Turkish population in the Other EU countries constitutes the largest immigrant group from the project countries (except in Belgium where Moroccans are in the majority). Germany accounts for around 75 per cent (1,966,000 in 1995) of all Turks in the Other EU countries.
- The Turkish population has grown by over half a million in Germany between 1986 and 1995 (1,402,000 to 1,966,000). This growth may be attributed to both natural increase and immigration as a result of family reunification and family formation.
- In the Benelux countries, the number of Turks has increased from 136,000 in 1975 to 231,000 in 1986, to 268,000 in 1995 (after peaking at 303,000 in 1992 and 1993). Two thirds are in the Netherlands.
- A sizeable population is found in the United Kingdom (29,000).
- The number of Turkish nationals in Austria in 1995 was 143,000. In 1986 there were approximately 80,000.
- Sizeable populations are also found in Denmark and Sweden (35,000 and 32,000 respectively in 1995).

LEBANON: MAIN TRENDS 1986-1995

FLOWS

- After Turkey, Morocco and Algeria, the highest number of immigrants to the EU between 1986 and 1995 were Lebanese nationals (117,000). Two-thirds went to Germany, the rest mainly to France and Sweden.

EU Mediterranean Countries

Immigration into EU Mediterranean Countries

- France and Greece are the most important destinations in the EU Mediterranean countries for Lebanese.
- Total migration from Lebanon to France increased suddenly to 3,000 persons in 1989 and 4,500 in 1990, but declined again to 1,300 in 1993 and 600 in 1995.
- Greece counted around 1,000 Lebanese migrants in 1985, but the number dwindled to a mere 200 by 1993.

Emigration from EU Mediterranean Countries

- No emigration data are available for the EU Mediterranean countries.

Other EU Countries

Immigration into Other EU Countries

- In 1990 a high point was reached when 20,000 Lebanese immigrated to Germany. There has been a steady decline since then, with 2,300 in 1995.

Emigration from Other EU Countries

- In 1995, 2,500 Lebanese emigrated from Germany.

STOCKS

EU Mediterranean Countries

- In 1995 the Lebanese population in France and Greece was 21,000 and 3,000 respectively.

Other EU Countries

- There is a sizeable population of Lebanese in Germany (54,000 in 1995). There are 7,000 in Sweden.

EGYPT: MAIN TRENDS 1986-1995

FLOWS

The main migratory trends are:

EU Mediterranean Countries

Immigration into EU Mediterranean Countries

- Of all project countries, Egypt was the major source of immigration to Greece in 1995 (1,800).

Emigration from EU Mediterranean Countries

- No emigration data are available for the EU Mediterranean countries.

Other EU Countries

Immigration into Other EU Countries

- Germany is the major receiving country in the Other EU countries for immigrants from Egypt (1,600 in 1995).

Emigration from Other EU Countries

- In 1995 most of the Egyptian emigrants from the Other EU countries were from Germany (1,900).

STOCKS

The main trends are:

EU Mediterranean Countries

- Egypt has developed into a substantial source of migrants with a destination in the EU Mediterranean countries, particularly Italy (with a population of 19,000 in 1994, up from 7,000 in 1986).
- Egyptians form the largest group from the project countries in Greece (7,000 in 1995).

Other EU Countries

- There are sizeable populations of Egyptians in the Other EU countries (13,000, 8,000 and 5,000 in Germany, the United Kingdom and the Netherlands respectively, in 1995).

OTHER MEDITERRANEAN COUNTRIES (CYPRUS, MALTA, ISRAEL, JORDAN, PALESTINE, SYRIA) : MAIN TRENDS 1986-1995

FLOWS

- In 1995, just over 6% of immigrants to the EU from a project country were citizens from one of the other Mediterranean countries: Cyprus, Malta, Israel, Jordan, Palestine or Syria.
- Between 1986 and 1995, country of citizenship and country of previous residence did not coincide for immigrants to the EU from Israel and Syria: 40% of these immigrants were citizens of countries other than Israel and Syria. Only 14% of persons leaving Cyprus and 33% from Malta coming to the EU were Cypriots or Maltese respectively.

EU Mediterranean Countries

Immigration into EU Mediterranean Countries

- Greece is currently the most important receiving country in the EU Mediterranean countries. There were 600 immigrants in 1995, a slight decrease since 1989. (Full data for Italy are not available for 1994 and 1995).

Emigration from EU Mediterranean Countries

- No emigration data are available for the EU Mediterranean countries.

Other EU Countries

Immigration into Other EU Countries

- The United Kingdom is the major receiving country in the Other EU countries for immigrants from the other Mediterranean countries (4,000 in 1995).
- Syrians form the major source of immigrants to Germany from the other Mediterranean countries (1,900 in 1995).
- The United Kingdom was the major receiving country in the EU in 1995 for Israelis (1,500), Jordanians (1,400), Cypriots (700) and Maltese (400).

Emigration from Other EU Countries

During the period 1986-1995 most emigrants of nationals of the other Mediterranean countries were from Germany, followed by the United Kingdom (2,300 and 1,300 respectively in 1995).

STOCKS

The main trends are:

EU Mediterranean Countries

- Italy and France have the largest populations from the other Mediterranean countries in the EU Mediterranean countries, approximately 9,000 each in 1994 and 1995.
- The largest group is that of Syrians (6,000 in France in 1994).

Other EU Countries

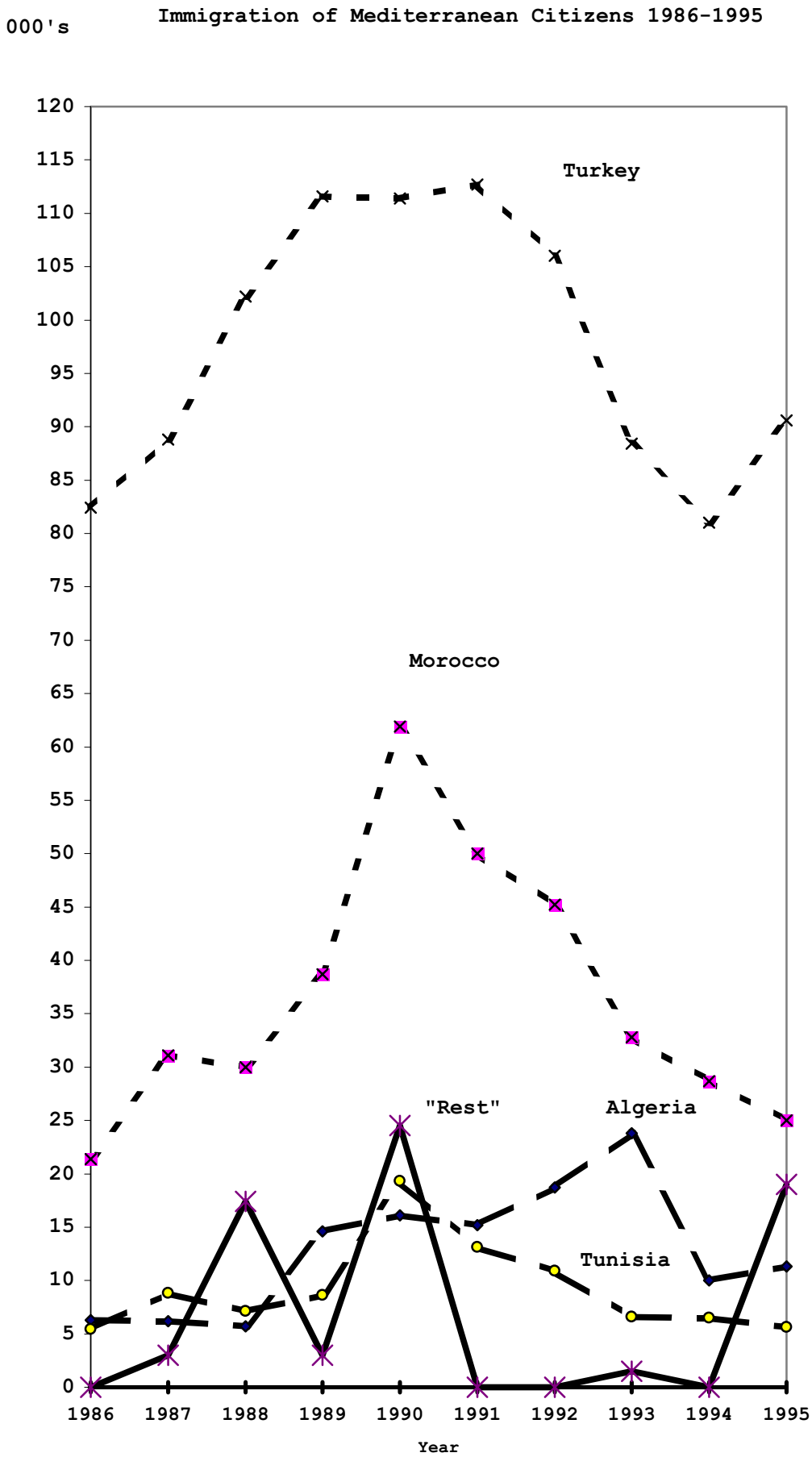
- The largest population from the other Mediterranean countries in the Other EU countries is that of Syrians (18,000 in Germany in 1995).
- Germany has the major population of nationals from the other Mediterranean countries (42,000 in 1995): the largest groups being Syrians (18,000), Jordanians (13,000), and Israelis (10,000).
- There are sizeable populations of Cypriots and Maltese in the United Kingdom (20,000 and 9,000 respectively).

POPULATION BY CITIZENSHIP 1 JANUARY 1995 (numbers (thousands) and percentages) Source: Eurostat (Statistics in Focus 1998)

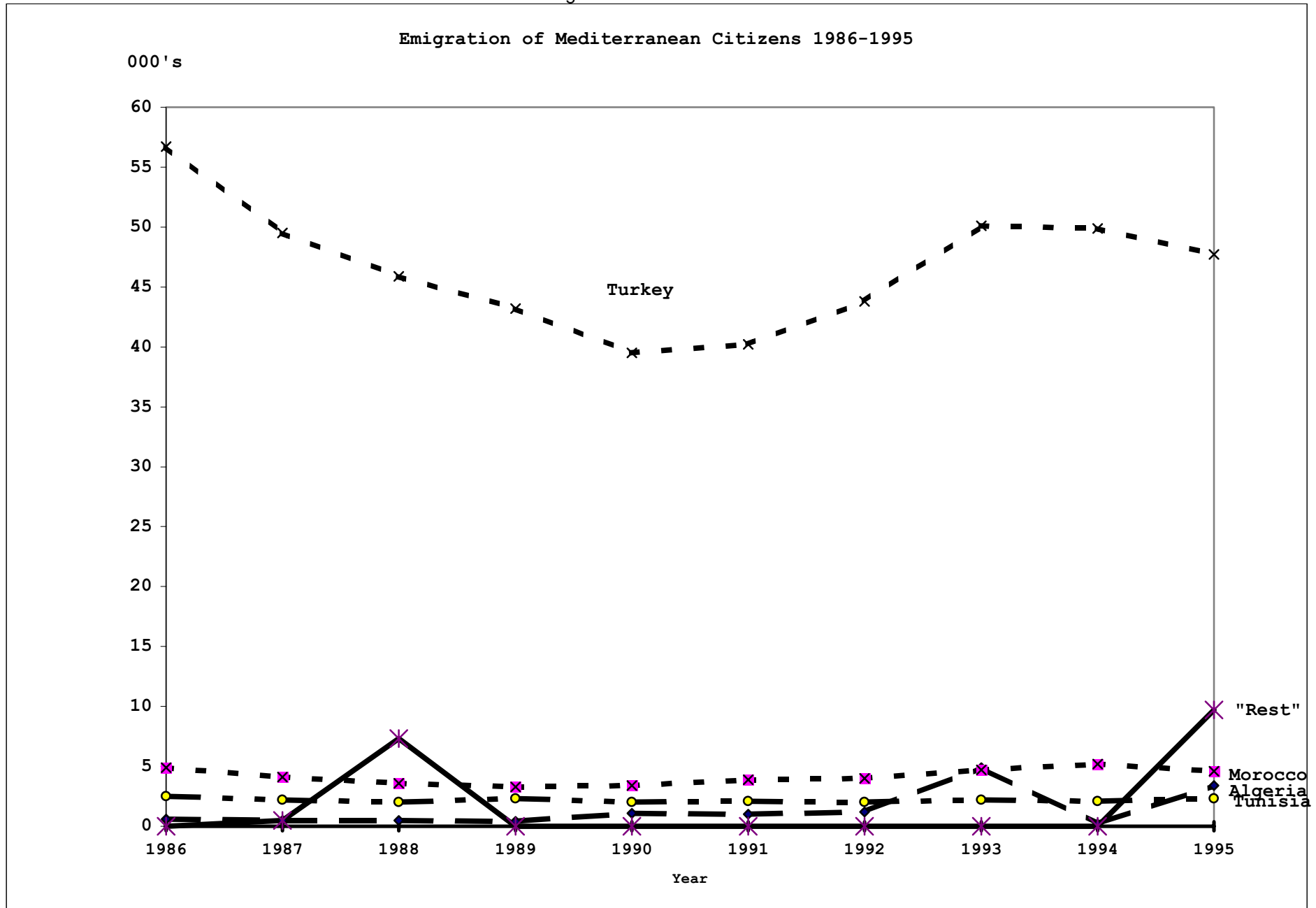
REPORT 1 Agenda Item 4.1

	EU Total	Portugal	Spain	Southern Europe France	Italy	Greece	Germany	NW Europe Benelux	UK	Ireland	Austria	Other Nordic
	369394	9912	39170	56652	57269	10443	81539	25961	57680	3598	8040	19131
TOTAL POPULATION	369394	9912	39170	56652	57269	10443	81539	25961	57680	3598	8040	19131
Citizens of Mediterranean countries as %:												
TOTAL	1.32	0.00	0.18	2.87	0.01	0.18	2.70	2.32	0.14	:	1.78	0.47
Algeria	0.18	:	0.01	1.08	:	0.00	0.02	0.04	0.01	:	:	0.01
Morocco	0.28	:	0.16	1.01	:	0.00	0.10	1.17	0.01	:	:	0.03
Tunisia	0.07	:	0.00	0.36	:	0.00	0.03	0.03	0.00	:	:	0.01
Turkey	0.72	0.00	0.00	0.35	0.01	0.03	2.41	1.03	0.05	:	1.78	0.30
Lebanon	0.03	:	0.00	0.04	:	0.03	0.07	0.01	0.00	:	:	0.06
Egypt	0.01	:	0.00	0.01	:	0.07	0.02	0.02	0.01	:	:	0.01
Other	0.03	:	0.00	0.02	0.00	0.04	0.05	0.02	0.06	:	:	0.05
Cyprus	0.01	:	:	:	0.00	0.00	0.00	0.00	0.03	:	:	0.00
Malta	0.00	:	0.00	:	0.00	0.00	0.00	0.00	0.02	:	:	0.00
Israel	0.01	:	0.00	0.01	:	0.01	0.01	0.01	0.01	:	:	0.01
Jordan	0.00	:	0.00	:	:	0.01	0.02	0.00	:	:	:	0.01
Palestine	0.00	:	0.00	:	:	0.00	:	:	:	:	:	:
Syria	0.01	:	0.00	0.01	:	0.02	0.02	0.01	:	:	:	0.03
NON-NATIONAL POPULATION	17563	157	461	3597	684	153	6991	1812	2096	96	721	796
Citizens of Mediterranean countries as %:												
TOTAL	27.57	0.09	15.54	45.24	0.69	12.1	31.53	33.29	3.95	:	19.84	10.94
Algeria	3.72	:	0.69	17.08	:	0.12	0.27	0.61	0.19	:	:	0.15
Morocco	5.89	:	13.88	15.92	:	0.24	1.18	16.70	0.33	:	:	0.67
Tunisia	1.39	:	0.09	5.74	:	0.21	0.39	0.43	0.05	:	:	0.22
Turkey	15.20	0.04	0.07	5.50	0.55	2.03	28.12	14.79	1.38	:	19.84	7.30
Lebanon	0.54	:	0.24	0.58	:	1.89	0.78	0.16	0.10	:	:	1.40
Egypt	0.24	:	0.14	0.18	:	4.62	0.19	0.25	0.38	:	:	0.19
Other	0.59	0.05	0.43	0.25	0.14	2.99	0.60	0.35	1.52	:	:	1.01
Cyprus	0.12	0.00	:	:	0.04	0.09	0.02	0.00	0.95	:	:	0.01
Malta	0.06	0.00	0.00	:	0.10	0.03	0.00	0.01	0.43	:	:	0.01
Israel	0.12	0.05	0.07	0.08	:	0.41	0.14	0.19	0.14	:	:	0.19
Jordan	0.09	:	0.13	:	:	0.91	0.18	0.03	:	:	:	0.18
Palestine	:	:	0.03	:	:	0.02	:	:	:	:	:	:
Syria	0.20	:	0.20	0.17	:	1.53	0.26	0.12	:	:	:	0.62
MED. COUNTRIES POPULATION	4843	0	72	1627	5	19	2204	603	83	:	143	87

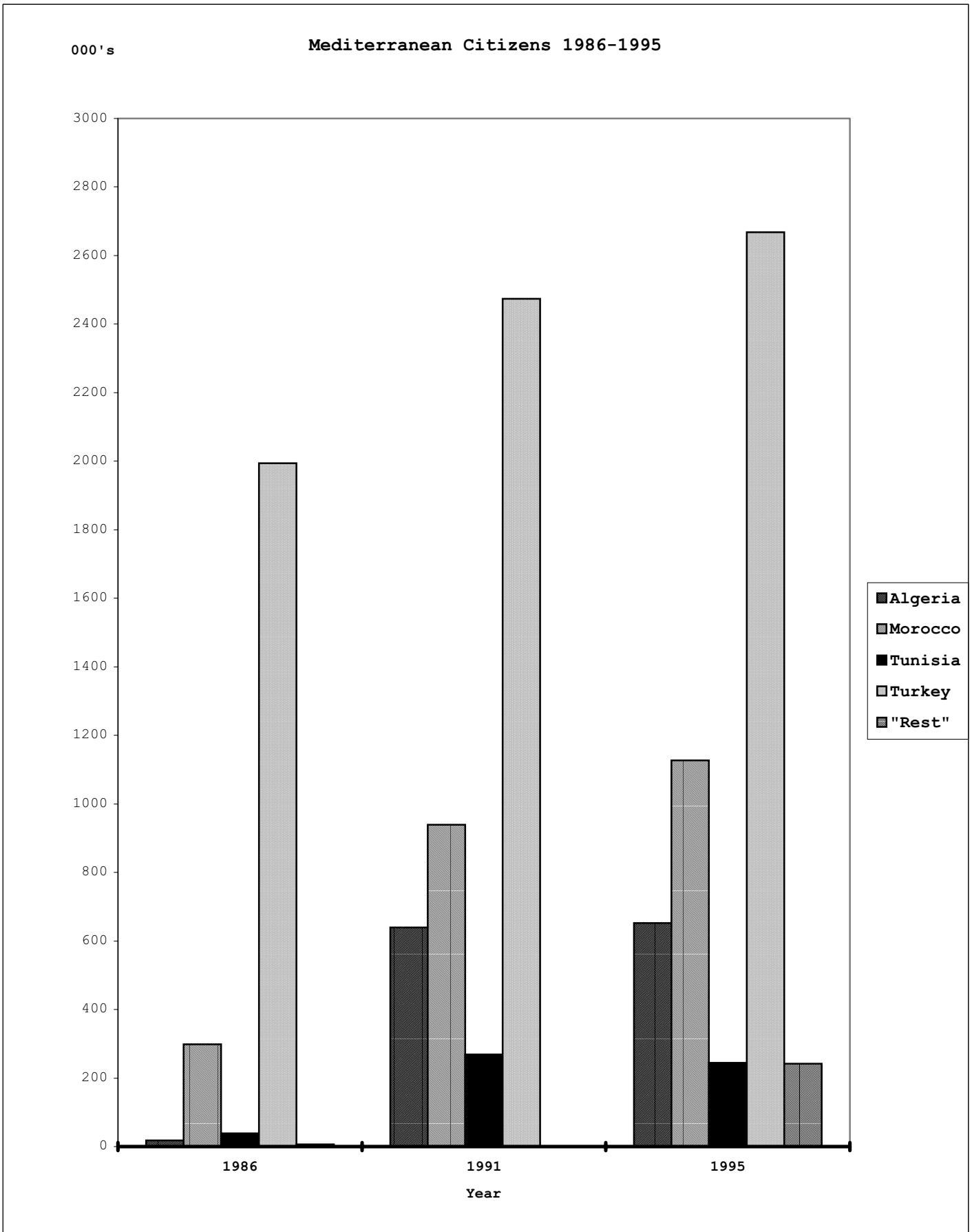
Immigration 1986-1995 Chart 1



Emigration 1986-1995 Chart 1



Citizens 1986-1995 Chart 3



Citizens 1986-1995 (2) Chart 3

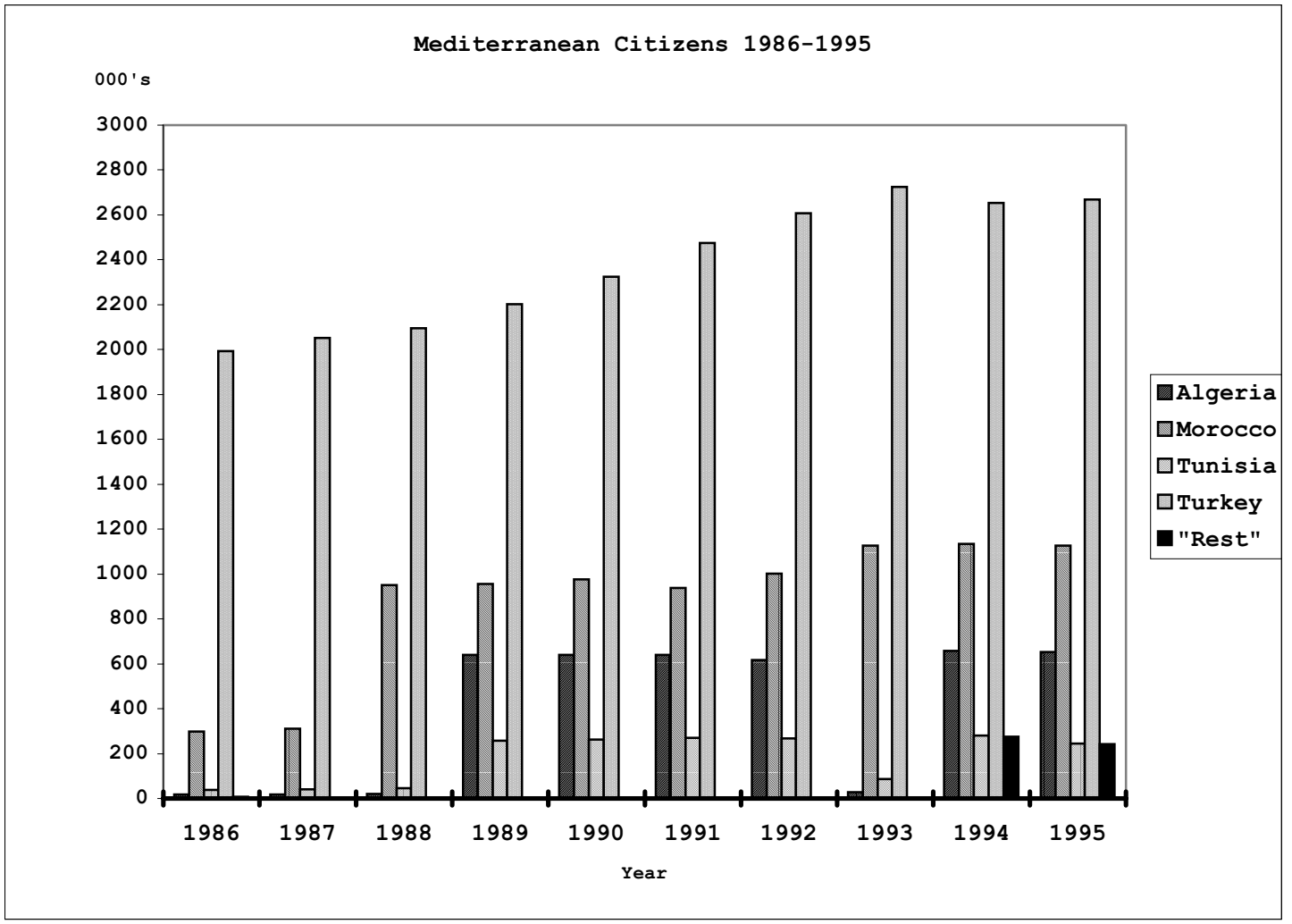


Table 1

TABLE OF IMMIGRATION OF ALGERIAN CITIZENS INTO EU, BY EU COUNTRY: 1986-1995 (thousands)										
Region/Country	1986	1987	1988	1989	1990	1991	1992	1993	1994	1995
<u>EU Mediterranean countries</u>										
-										
Portugal	:	:	:	:	:	:	0	0	0	0
Spain	:	:	0	0,1	0,1	0,2	0,2	0,2	0,2	0,3
France	5,3	5,3	4,9	13,7	12,7	11,8	11,4	12,3	8,7	7,1
Italy	0,1	0,2	0,1	0,1	0,7	0,3	0,3	:	0,2	0,2
Greece	0	0	0	0	0	0	0	0	0	0
<u>Other EU countries</u>										
Germany	:	:	:	:	1,7	1,8	5,9	10,7	:	3,0
Benelux	0,4	0,4	0,4	0,4	0,6	0,7	0,6	0,5	0,8	0,6
United Kingdom	0,4	0,1	0,1	0,1	0,1	0,1	0,1	0	:	:
Ireland	:	:	:	:	:	:	:	:	:	:
Austria	:	:	:	:	:	:	:	:	:	:
Nordic Countries	0,1	0,2	0,2	0,2	0,2	0,3	0,2	0,1	0,1	0,1
TOTAL	6,3	6,2	5,7	14,6	16,1	15,2	18,7	23,8	10,0	11,3

Source: Eurostat (via for 1986-1993: Paper CONFMED(96)4, migration from African and Eastern

Mediterranean countries to Western Europe by Jeannette J Schoorl)

Data: Data concern legal migration only

Data are rounded to the nearest hundred

'O': result is less than half the entity of measurement

':': denotes not available or unknown

Bold figures are estimates

Nordic Countries:

include Iceland and Norway for 1986-1993

Table 2

TABLE OF IMMIGRATION OF MOROCCAN CITIZENS INTO EU, BY EU COUNTRY: 1986-1995 (thousands)										
Region/Country	1986	1987	1988	1989	1990	1991	1992	1993	1994	1995
<u>EU Mediterranean countries</u>										
-										
Portugal	:	:	:	:	:	:	0	0	0	0
Spain	:	:	0,7	1,4	1,2	1,9	4,5	3,3	3,7	3,8
France	8,2	8,5	10,7	17,6	17,7	17,8	16,1	14,2	7,9	6,3
Italy	0,3	8,9	2,8	2,3	23,1	9,6	6,7	:	4,6	4,1
Greece	0	0	0	0	0,1	0	0	0	0	0
<u>Other EU countries</u>										
Germany	3,9	3,8	4,6	4,8	5,6	6,1	6,5	5,3	4,0	3,8
Benelux	8,5	9,3	10,5	11,0	12,4	12,7	10,6	9,4	8,0	6,7
United Kingdom	0	0	0	0,8	0,8	0,8	0	0	0	:
Ireland	:	:	:	:	:	:	:	:	:	:
Austria	:	:	:	:	:	:	:	:	:	:
Nordic Countries	0,5	0,6	0,7	0,8	1,0	1,1	0,8	0,6	0,5	0,3
TOTAL	21,4	31,1	30,0	38,7	61,9	50,0	45,2	32,8	28,7	25,0

Source: Eurostat (via for 1986-1993: Paper CONFMED(96)4, migration from African and Eastern

Mediterranean countries to Western Europe by Jeannette J School)

Data:

Data concern legal migration only

Data are rounded to the nearest hundred

'O': result is less than half the entity of measurement

':' denotes not available or unknown

Bold figures are estimates

Nordic Countries:

include Iceland and Norway for 1986-1993

Table 3

TABLE OF IMMIGRATION OF TUNISIAN CITIZENS INTO EU, BY EU COUNTRY: 1986-1995 (thousands)

Region/Country	1986	1987	1988	1989	1990	1991	1992	1993	1994	1995
<u>EU Mediterranean countries</u>										
-										
Portugal	:	:	:	:	:	:	0	0	0	0
Spain	:	:	:	:	0	0	0	0	0	0
France	2,4	2,6	2,9	4,3	3,8	4,1	3,8	3,4	2,3	1,9
Italy	0,5	3,3	1,2	1,0	11,5	5,1	3,2	:	1,1	1,0
Greece	0	0	0	0,1	0,1	0	0	0	0,1	0
<u>Other EU countries</u>										
Germany	1,9	2,1	2,2	2,3	2,7	2,8	3,1	2,5	2,3	2,1
Benelux	0,4	0,5	0,5	0,6	0,7	0,7	0,5	0,5	0,5	0,5
United Kingdom	0	0	0	0	0,1	0,1	0,1	0	:	:
Ireland	:	:	:	:	:	:	:	:	:	:
Austria	:	:	:	:	:	:	:	:	:	:
Nordic Countries	0,2	0,3	0,3	0,3	0,4	0,3	0,2	0,2	0,2	0,1
TOTAL	5,4	8,8	7,1	8,6	19,3	13,1	10,9	6,6	6,5	5,6

Source: Eurostat (via for 1986-1993: Paper CONFMED(96)4, migration from African and Eastern

Mediterranean countries to Western Europe by Jeannette J Schoorl)

Data: Data concern legal migration only

Data are rounded to the nearest hundred

'O': result is less than half the entity of measurement

'.' denotes not available or unknown

Bold figures are estimates

Nordic Countries:

include Iceland and Norway for 1986-1993

Table 4

TABLE OF IMMIGRATION OF TURKISH CITIZENS INTO EU, BY EU COUNTRY: 1986-1995 (thousands)										
Region/Country	1986	1987	1988	1989	1990	1991	1992	1993	1994	1995
<u>EU Mediterranean countries</u>										
-										
Portugal	:	:	:	:	:	:	0	0	0	0
Spain	:	:	:	:	:	:	0	0	0	0
France	5,4	5,7	6,2	6,9	7,1	9,3	9,3	6,8	4,7	3,1
Italy	:	:	:	:	:	:	:	:	:	:
Greece	0,4	0,2	0,3	0,3	0,2	0,1	0,1	0,1	0,2	0,2
<u>Other EU countries</u>										
Germany	62,2	66,2	79,1	86,4	84,3	82,5	81,3	68,5	64,7	74,5
Benelux	10,3	11,7	11,9	12,9	15,3	15,6	11,5	9,9	7,7	7,3
United Kingdom	1,0	1,3	1,2	1,6	1,3	1,0	0,9	1,0	2,0	3,8
Ireland	:	:	:	:	:	:	:	:	:	:
Austria	:	:	:	:	:	:	:	:	:	:
Nordic Countries	3,1	3,7	3,5	3,5	3,2	4,2	2,9	2,1	1,7	1,7
TOTAL	82,4	88,8	102,2	111,6	111,4	112,7	106,0	88,4	81,0	90,6

Source: Eurostat (via for 1986-1993: Paper CONFMED(96)4, migration from African and Eastern Mediterranean countries to Western Europe by Jeannette J Schoorl)

Data: Data concern legal migration only
Data are rounded to the nearest hundred
'O': result is less than half the entity of measurement
'!': denotes not available or unknown

Bold figures are estimates
Nordic Countries: include Iceland and Norway for 1986-1993

Table 5

TABLE OF IMMIGRATION OF LEBANESE CITIZENS INTO EU, BY EU COUNTRY: 1986-1995 (thousands)										
Region/Country	1986	1987	1988	1989	1990	1991	1992	1993	1994	1995
<u>EU Mediterranean countries</u>										
-										
Portugal										0
Spain										0
France			1,1	3,0	4,5			1,3		0,6
Italy										:
Greece								0,2		0,2
<u>Other EU countries</u>										
Germany			6,0		20,0					2,3
Benelux			0,2							0,2
United Kingdom										0,1
Ireland										:
Austria										:
Nordic Countries		1,7								0,3
TOTAL	0	1,7	7,3	3,0	24,5	0	0	1,5	0	3,7

Source: Eurostat (via for 1986-1993: Paper CONFMED(96)4, migration from African and Eastern

Mediterranean countries to Western Europe by Jeannette J Schoorl)

Data: Data concern legal migration only

Data are rounded to the nearest hundred

'O': result is less than half the entity of measurement

':' denotes not available or unknown

Bold figures are estimates

Nordic Countries:

include Iceland and Norway for 1986-1993

Table 6

TABLE OF IMMIGRATION OF EGYPTIAN CITIZENS INTO EU, BY EU COUNTRY: 1986-1995 (thousands)										
Region/Country	1986	1987	1988	1989	1990	1991	1992	1993	1994	1995
<u>EU Mediterranean countries</u>										
-										
Portugal										:
Spain			0							0
France			0,2							0,2
Italy		0,2								0,7
Greece										1,8
<u>Other EU countries</u>										
Germany			2,4							1,6
Benelux			1,2							0,5
United Kingdom										0,5
Ireland										:
Austria										:
Nordic Countries		0,2								0,2
<u>TOTAL</u>	0	0,4	3,8	0	0	0	0	0	0	5,5

Source: Eurostat (via for 1986-1993: Paper CONFMED(96)4, migration from African and Eastern

Mediterranean countries to Western Europe by Jeannette J Schoorl

Data: Data concern legal migration only

Data are rounded to the nearest hundred

'O': result is less than half the entity of measurement

':' denotes not available or unknown

Bold figures are estimates

Nordic Countries:

include Iceland and Norway for 1986-1993

Table 7

TABLE OF IMMIGRATION OF CITIZENS OF OTHER MEDITERRANEAN COUNTRIES (CYPRUS, MALTA, ISRAEL, JORDAN, PALESTINE, SYRIA) INTO EU, BY EU COUNTRY: 1986-1995 (thousands)										
Region/Country	1986	1987	1988	1989	1990	1991	1992	1993	1994	1995
<u>EU Mediterranean countries</u>										
-										
Portugal										0
Spain			0							0,1
France			0,3							0,3
Italy										:
Greece										0,6
<u>Other EU countries</u>										
Germany			5,2							3,6
Benelux			0,8							0,6
United Kingdom										4,0
Ireland										:
Austria										:
Nordic Countries		0,9								0,6
TOTAL	0	0,9	6,3	0	0	0	0	0	0	9,8

Source: Eurostat (via for 1986-1993: Paper CONFMED(96)4, migration from African and Eastern

Mediterranean countries to Western Europe by Jeannette J Schoorl)

Data: Data concern legal migration only

Data are rounded to the nearest hundred

'O': result is less than half the entity of measurement

'-' denotes not available or unknown

Bold figures are estimates

Nordic Countries:

include Iceland and Norway for 1986-1993

Table 8

TABLE OF EMIGRATION OF ALGERIAN CITIZENS FROM EU, BY EU COUNTRY: 1986-1995 (thousands)										
Region/Country	1986	1987	1988	1989	1990	1991	1992	1993	1994	1995
<u>EU Mediterranean countries</u>										
-										
Portugal	:	:	:	:	:	:	:	:	:	:
Spain	:	:	:	:	:	:	:	:	:	:
France	:	:	:	:	:	:	:	:	:	:
Italy	:	:	:	:	:	:	:	:	:	:
Greece	:	:	:	:	:	:	:	:	:	:
<u>Other EU countries</u>										
Germany	:	:	:	:	0,6	0,8	1,0	4,7	:	3,3
Benelux	0,4	0,3	0,2	0,2	0,2	0,1	0,1	0,2	0,1	0,1
United Kingdom	0,2	0,2	0,3	0,2	0,3	0,1	0,1	0	0	:
Ireland	:	:	:	:	:	:	:	:	:	:
Austria	:	:	:	:	:	:	:	:	:	:
Nordic Countries	0	0	0	0	0	0	0	0	0	0
TOTAL	0,6	0,5	0,5	0,4	1,1	1,0	1,2	4,9	0,2	3,4

Source: Eurostat (via for 1986-1993: Paper CONFMED(96)4, migration from African and Eastern

Mediterranean countries to Western Europe by Jeannette J Schoorl)

Data:

Data concern legal migration only

Data are rounded to the nearest hundred

'O': result is less than half the entity of measurement

'.' denotes not available or unknown

Bold figures are estimates

Nordic Countries:

include Iceland and Norway for 1986-1993

Table 9

TABLE OF EMIGRATION OF MOROCCAN CITIZENS FROM EU, BY EU COUNTRY: 1986-1995 (thousands)										
Region/Country	1986	1987	1988	1989	1990	1991	1992	1993	1994	1995
<u>EU Mediterranean countries</u>										
-										
Portugal	:	:	:	:	:	:	:	:	:	:
Spain	:	:	:	:	:	:	:	:	:	:
France	:	:	:	:	:	:	:	:	:	:
Italy	:	:	:	0,2	0,2	0,2	0,2	:	0,3	0,2
Greece	:	:	:	:	:	:	:	:	:	:
<u>Other EU countries</u>										
Germany	1,3	1,1	1,4	1,3	1,5	2,0	2,3	2,9	3,4	2,8
Benelux	3,5	2,9	2,1	1,7	1,5	1,5	1,2	1,6	1,4	1,5
United Kingdom	0	0	0	0	0,1	0,1	0,2	0,1	0	:
Ireland	:	:	:	:	:	:	:	:	:	:
Austria	:	:	:	:	:	:	:	:	:	:
Nordic Countries	0,1	0,1	0,1	0,1	0,1	0,1	0,1	0,1	0,1	0,1
TOTAL	4,9	4,1	3,6	3,3	3,4	3,9	4,0	4,7	5,2	4,6

Source: Eurostat (via for 1986-1993: Paper CONFMED(96)4, Migration from African and Eastern

Mediterranean countries to Western Europe by Jeannette J Schoorl

Data: Data concern legal migration only

Data are rounded to the nearest hundred

'O': result is less than half the entity of measurement

':' denotes not available or unknown

Bold figures are estimates

Nordic Countries:

include Iceland and Norway for 1986-1993

Table 10

TABLE OF EMIGRATION OF TUNISIAN CITIZENS FROM EU, BY EU COUNTRY: 1986-1995 (thousands)										
Region/Country	1986	1987	1988	1989	1990	1991	1992	1993	1994	1995
<u>EU Mediterranean countries</u>										
-										
Portugal	:	:	:	:	:	:	:	:	:	:
Spain	0	0	0	0	:	:	:	:	:	:
France	:	:	:	:	:	:	:	:	:	:
Italy	:	:	:	0,1	0,1	0,1	0,1	:	:	:
Greece	:	:	:	:	:	:	:	:	:	:
<u>Other EU countries</u>										
Germany	2,1	1,8	1,8	1,9	1,8	1,8	1,8	1,9	2,0	1,9
Benelux	0,3	0,4	0,2	0,2	0,1	0,2	0,1	0,2	0,1	0,2
United Kingdom	0	0	0	0	0	0	0	0	0	0,1
Ireland	:	:	:	:	:	:	:	:	:	:
Austria	:	:	:	:	:	:	:	:	:	:
Nordic Countries	0,1	0	0	0,1	0	0	0	0,1	0	0,1
TOTAL	2,5	2,2	2,0	2,3	2,0	2,1	2,0	2,2	2,1	2,3

Source: Eurostat (via for 1986-1993: Paper CONFMED(96)4, migration from African and Eastern

Mediterranean countries to Western Europe by Jeannette J Schoorl

Data: Data concern legal migration only

Data are rounded to the nearest hundred

'O': result is less than half the entity of measurement

'!' denotes not available or unknown

Bold figures are estimates

Nordic Countries:

include Iceland and Norway for 1986-1993

Table 11

TABLE OF EMIGRATION OF TURKISH CITIZENS FROM EU, BY EU COUNTRY: 1986-1995 (thousands)										
Region/Country	1986	1987	1988	1989	1990	1991	1992	1993	1994	1995
<u>EU Mediterranean countries</u>										
-										
Portugal	:	:	:	:	:	:	:	:	:	:
Spain	:	:	:	:	:	:	:	:	:	:
France	:	:	:	:	:	:	:	:	:	:
Italy	:	:	:	:	:	:	:	:	:	:
Greece	:	:	:	:	:	:	:	:	:	:
<u>Other EU countries</u>										
Germany	49,3	43,4	40,5	38,1	35,6	36,6	40,7	46,6	47,4	44,4
Benelux	6,7	5,3	4,3	3,7	2,7	2,1	1,9	2,1	1,9	2,0
United Kingdom	0,4	0,5	0,7	1,0	0,8	1,0	0,7	0,7	0	0,8
Ireland	:	:	:	:	:	:	:	:	:	:
Austria	:	:	:	:	:	:	:	:	:	:
Nordic Countries	0,3	0,3	0,4	0,4	0,4	0,5	0,5	0,7	0,6	0,5
<u>TOTAL</u>	56,7	49,5	45,9	43,2	39,5	40,2	43,8	50,1	49,9	47,7

Source: Eurostat (via for 1986-1993: Paper CONFMED(96)4, migration from African and Eastern

Mediterranean countries to Western Europe by Jeannette J Schoorl)

Data: Data concern legal migration only

Data are rounded to the nearest hundred

'O': result is less than half the entity of measurement

'-' denotes not available or unknown

Bold figures are estimates

Nordic Countries: include Iceland and Norway for 1986-1993

Table 12

TABLE OF EMIGRATION OF LEBANESE CITIZENS FROM EU, BY EU COUNTRY: 1986-1995 (thousands)										
Region/Country	1986	1987	1988	1989	1990	1991	1992	1993	1994	1995
<u>EU Mediterranean countries</u>										
-										
Portugal										:
Spain										:
France										:
Italy										:
Greece										:
<u>Other EU countries</u>										
Germany			1,5							2,5
Benelux										0,1
United Kingdom										:
Ireland										:
Austria										:
Nordic Countries		0								0,2
<u>TOTAL</u>	0	0	1,5	0	0	0	0	0	0	2,8

Source: Eurostat (via for 1986-1993: Paper CONFMED(96)4, migration from African and Eastern

Mediterranean countries to Western Europe by Jeannette J School)

Data:

Data concern legal migration only

Data are rounded to the nearest hundred

'O': result is less than half the entity of measurement

':' denotes not available or unknown

Bold figures are estimates

Nordic Countries:

include Iceland and Norway for 1986-1993

Table 13

TABLE OF EMIGRATION OF EGYPTIAN CITIZENS FROM EU, BY EU COUNTRY: 1986-1995 (thousands)										
Region/Country	1986	1987	1988	1989	1990	1991	1992	1993	1994	1995
<u>EU Mediterranean countries</u>										
-										
Portugal										:
Spain			0							:
France										:
Italy		0,2								0
Greece										:
<u>Other EU countries</u>										
Germany			1,7							1,9
Benelux			0,1							0,1
United Kingdom										0,8
Ireland										:
Austria										:
Nordic Countries		0								0,1
TOTAL	0	0,2	1,8	0	0	0	0	0	0	2,9

Source: Eurostat (via for 1986-1993: Paper CONFMED(96)4, migration from African and Eastern

Mediterranean countries to Western Europe by Jeannette J Schoorl)

Data: Data concern legal migration only

Data are rounded to the nearest hundred

'O': result is less than half the entity of measurement

'!' denotes not available or unknown

Bold figures are estimates

Nordic Countries:

include Iceland and Norway for 1986-1993

Table 14

TABLE OF EMIGRATION OF CITIZENS OF OTHER MEDITERRANEAN COUNTRIES (CYPRUS, MALTA, ISRAEL, JORDAN, PALESTINE, SYRIA) FROM EU, BY EU COUNTRY: 1986-1995 (thousands)										
Region/Country	1986	1987	1988	1989	1990	1991	1992	1993	1994	1995
<u>EU Mediterranean countries</u>										
-										
Portugal										:
Spain			0							:
France										:
Italy										0
Greece										:
<u>Other EU countries</u>										
Germany			3,4							2,3
Benelux			0,6							0,2
United Kingdom										1,3
Ireland										:
Austria										:
Nordic Countries		0,3								0,2
TOTAL	0	0,3	4,0	0	0	0	0	0	0	4,0

Source: Eurostat (via for 1986-1993: Paper CONFMED(96)4, migration from African and Eastern

Mediterranean countries to Western Europe by Jeannette J School)

Data:

Data concern legal migration only

Data are rounded to the nearest hundred

'O': result is less than half the entity of measurement

'!' denotes not available or unknown

Bold figures are estimates

Nordic Countries:

include Iceland and Norway for 1986-1993

Table 15

TABLE OF ALGERIAN CITIZENS IN EU, BY EU COUNTRY: 1986-1995 (thousands)										
Region/Country	1986	1987	1988	1989	1990	1991	1992	1993	1994	1995
<u>EU Mediterranean countries</u>										
-										
Portugal	:	:	:	0	0	0	0	:	0	:
Spain	0	0	1	1	1	1	2	3	3	3
France	:	:	:	620	614	610	586	:	614	614
Italy	1	1	2	2	2	4	3	:	3	:
Greece	:	:	0	0	0	0	0	:	0	0
<u>Other EU countries</u>										
Germany	5	5	5	5	6	7	9	14	23	19
Benelux	11	11	11	11	11	11	12	11	11	11
United Kingdom	:	:	:	:	3	2	:	:	2	4
Ireland	:	:	:	:	:	:	:	:	:	:
Austria	:	:	:	:	3	3	3	0	:	:
Nordic Countries	1	1	1	1	1	1	2	:	1	1
TOTAL	18	18	20	640	641	639	617	28	657	652

Source: Eurostat and OECD's SOPEMI system (via for 1986-1993: Paper CONFMED(96)4, migration from

African and Eastern Mediterranean countries to Western Europe by Jeannette J. Schoorl)

Data: Data concern legal migration only

'O': result is less than half the entity of measurement

'!' denotes that data source were not available or unknown

Bold figures indicate other sources

Data refer to the population on 1 January of year indicated

Austria: includes Liechtenstein, Slovenia and Switzerland for 1986-1993

Nordic Countries: include Iceland and Norway for 1986-1993

Table 16

TABLE OF MOROCCAN CITIZENS IN EU, BY EU COUNTRY: 1986-1995 (thousands)										
Region/Country	1986	1987	1988	1989	1990	1991	1992	1993	1994	1995
<u>EU Mediterranean countries</u>										
-										
Portugal	:	:	:	0	0	0	0	0	0	:
Spain	6	9	11	12	14	17	50	54	61	64
France	:	:	606	585	573	458	457	573	573	573
Italy	3	3	16	24	27	78	91	96	98	93
Greece	:	:	0	0	0	0	0	0	0	0
<u>Other EU countries</u>										
Germany	48	52	47	52	62	70	75	80	83	82
Benelux	240	249	263	275	287	299	309	310	310	303
United Kingdom	:	:	:	:	4	7	10	7	3	7
Ireland	:	:	:	:	:	:	:	:	:	:
Austria	2	2	2	2	2	3	3	0	:	:
Nordic Countries	5	5	5	5	6	7	7	6	5	5
TOTAL	298	311	950	955	975	939	1002	1126	1133	1127

Source: Eurostat and OECD's SOPEMI system (via for 1986-1993: Paper CONFMED(96)4, migration from African and Eastern Mediterranean countries to Western Europe by Jeannette J. Schoorl)

Data: Data concern legal migration only
 'O': result is less than half the entity of measurement
 ':' denotes that data source were not available or unknown
 Bold figures indicate other sources

Data refer to the population on 1 January of year indicated
 Austria: includes Liechtenstein, Slovenia and Switzerland for 1986-1993

Nordic Countries: include Iceland and Norway for 1986-1993

Table 17

TABLE OF TUNISIAN CITIZENS IN EU, BY EU COUNTRY: 1986-1995 (thousands)										
Region/Country	1986	1987	1988	1989	1990	1991	1992	1993	1994	1995
<u>EU Mediterranean countries</u>										
-										
Portugal	:	:	:	0	0	0	0	:	0	:
Spain	0	0	0	0	0	0	0	0	0	0
France	:	:	:	208	206	186	176	:	206	206
Italy	4	5	12	15	14	41	48	50	35	:
Greece	:	:	0	0	0	0	0	:	0	:
<u>Other EU countries</u>										
Germany	23	24	21	22	24	26	27	28	28	27
Benelux	9	9	9	9	9	9	9	9	8	8
United Kingdom	:	:	:	:	5	1	2	:	2	1
Ireland	:	:	:	:	:	:	:	:	:	:
Austria	2	2	2	3	3	4	4	:	:	:
Nordic Countries	1	1	1	1	2	2	2	:	2	2
TOTAL	39	41	45	258	263	269	268	87	281	244

Source: Eurostat and OECD's SOPEMI system (via for 1986-1993: Paper CONFMED(96)4, migration from African and Eastern Mediterranean countries to Western Europe by Jeannette J Schoorl)

Data: Data concern legal migration only
 'O': result is less than half the entity of measurement
 ':': denotes not available or unknown

Bold figures are estimates

Data refer to the population on 1 January of year indicated

Austria: includes Liechtenstein, Slovenia and Switzerland for 1986-1993

Nordic Countries: include Iceland and Norway for 1986-1993

Table 18

TABLE OF TURKISH CITIZENS IN EU, BY EU COUNTRY: 1986-1995 (thousands)										
Region/Country	1986	1987	1988	1989	1990	1991	1992	1993	1994	1995
<u>EU Mediterranean countries</u>										
-										
Portugal	:	:	:	0	0	0	0	:	0	0
Spain	0	0	0	0	:	0	0	0	0	0
France	155	180	185	202	198	214	239	240	197	197
Italy	:	:	:	:	2	5	3	3	4	4
Greece	2	:	2	3	3	3	2	4	3	3
<u>Other EU countries</u>										
Germany	1402	1434	1454	1524	1613	1695	1780	1855	1918	1966
Benelux	231	237	245	256	273	289	303	301	291	268
United Kingdom	28	19	19	15	19	24	29	31	41	29
Ireland	:	:	:	:	:	:	:	:	:	:
Austria	131	133	140	147	160	183	188	223	141	143
Nordic Countries	45	48	51	54	57	61	64	67	59	58
TOTAL	1994	2051	2096	2201	2325	2474	2608	2724	2654	2668

Source: Eurostat and OECD's SOPEMI system (via for 1986-1993: Paper CONFMED(96)4, migration from

African and Eastern Mediterranean countries to Western Europe by Jeannette J Schoorl)

Data: Data concern legal migration only

'O': result is less than half the entity of measurement

':' denotes not available or unknown

Bold figures are estimates

Data refer to the population on 1 January of year indicated

Austria: includes Liechtenstein, Slovenia and Switzerland for 1986-1993

Nordic Countries: include Iceland and Norway for 1986-1993

Table 19

TABLE OF LEBANESE CITIZENS IN EU, BY EU COUNTRY: 1986-1995 (thousands)										
Region/Country	1986	1987	1988	1989	1990	1991	1992	1993	1994	1995
<u>EU Mediterranean countries</u>										
-										
Portugal									0	:
Spain									1	1
France									21	21
Italy									4	:
Greece									3	3
<u>Other EU countries</u>										
Germany									55	54
Benelux									3	3
United Kingdom									2	2
Ireland									:	:
Austria									:	:
Nordic Countries									12	11
TOTAL	0	0	0	0	0	0	0	0	101	95

Source: Eurostat and OECD's SOPEMI system (via for 1986-1993: Paper CONFMED(96)4, migration from African and Eastern Mediterranean countries to Western Europe by Jeannette J School)

Data: Data concern legal migration only
 'O': result is less than half the entity of measurement
 ':' denotes not available or unknown

Bold figures are estimates

Data refer to the population on 1 January of year indicated

Austria: includes Liechtenstein, Slovenia and Switzerland for 1986-1993

Nordic Countries: include Iceland and Norway for 1986-1993

Table 20

TABLE OF EGYPTIAN CITIZENS IN EU, BY EU COUNTRY: 1986-1995 (thousands)										
Region/Country	1986	1987	1988	1989	1990	1991	1992	1993	1994	1995
<u>EU Mediterranean countries</u>										
-										
Portugal									0	:
Spain									1	1
France									6	6
Italy	7								19	:
Greece									7	7
<u>Other EU countries</u>										
Germany									14	13
Benelux									5	5
United Kingdom									10	8
Ireland									:	:
Germany									:	:
Nordic Countries									1	2
TOTAL	7	0	0	0	0	0	0	0	63	42

Source: Eurostat and OECD's SOPEMI system (via for 1986-1993: Paper CONFMED(96)4, migration from

African and Eastern Mediterranean countries to Western Europe by Jeannette J Schoorl)

Data: Data concern legal migration only

'O': result is less than half the entity of measurement

':' denotes not available or unknown

Bold figures are estimates

Data refer to the population on 1 January of year indicated

Austria: includes Liechtenstein, Slovenia and Switzerland for 1986-1993

Nordic Countries: include Iceland and Norway for 1986-1993

Table 21

TABLE OF CITIZENS OF OTHER MEDITERRANEAN COUNTRIES (CYPRUS, MALTA, ISRAEL, JORDAN, PALESTINE, SYRIA) IN EU, BY EU COUNTRY: 1986-1995 (thousands)										
Region/Country	1986	1987	1988	1989	1990	1991	1992	1993	1994	1995
<u>EU Mediterranean countries</u>										
-										
Portugal									0	0
Spain									2	2
France									9	9
Italy									9	1
Greece									5	5
<u>Other EU countries</u>										
Germany									41	42
Benelux									7	6
United Kingdom									30	32
Ireland									:	:
Austria									:	:
Nordic Countries									8	8
<u>TOTAL</u>	0	0	0	0	0	0	0	0	111	105

Source: Eurostat and OECD's SOPEMI system (via for 1986-1993: Paper CONFMED(96)4, migration from African and Eastern Mediterranean countries to Western Europe by Jeannette J Schoorl)

Data: Data concern legal migration only
 'O': result is less than half the entity of measurement
 ':' denotes not available or unknown

Bold figures are estimates

Data refer to the population on 1 January of year indicated

Austria: includes Liechtenstein, Slovenia and Switzerland for 1986-1993

Nordic Countries: include Iceland and Norway for 1986-1993

LIST OF WORKING PAPERS PREVIOUSLY PUBLISHED

- E4/1997-1 Comparing data sources for measuring international migration
in Central and Eastern Europe
Michel Poulain - Université Catholique de Louvain
- E4/1997-2 La mesure des courants de migration internationale entre la
Belgique, d'une part, le Danemark et la Suède, d'autre part
Ingvar Johannesson, Statistics Sweden, Örebro
Anita Lange, Danmarks Statistics, Copenhagen
Michel Poulain, Institut National de Statistique, Bruxelles
- E0/1997-3 Living conditions and inequality in the European Union, 1994
Joachim Vogel, Statistics Sweden
- E4/1997-4 Birth expectations and their use in fertility forecasting
W. Van Hoorn, Statistics Netherlands
N. Keilman, Statistics Norway
- E4/1997-5 Long-term internal migration scenarios for the countries of the
European Union
Nicole Van Der Gaag, Evert Van Imhoff, Leo Van
Wissen, Netherlands Interdisciplinary Demographic Institute
- E4/1997-6 Long-term international migration scenarios for the European
Economic Area
Andries De Jong, Harry Visser, Statistics Netherlands
- E4/1997-7 Now-casts of live births and deaths for 15 countries of the
European Economic Area
J. De Beer, K. Koldijk
- E4/1997-8 Improved migration statistics - An evaluation
Ingrid Melin - Statistics Sweden
- 3/1998/E/n°1 Indicators of migration between the Republic of Ireland and the
United Kingdom
Central Statistics Office, Ireland
Office for National Statistics, United Kingdom
- 3/1998/E/n°2 Swiss-swedish joint study on cohort-based asylum statistics
Torsten Torstensson, Krister Isaksson, Swedish Immigration
Board
Stéphane Cotter, Marcel Heiniger, Swiss Federal
Statistical Office Bern

- 3/1998/E/n°3 Analysis and projection of mortality by gender, age/generation, and main causes of death for France, Italy, the Netherlands, and Norway
E. Tabeau, P. Ekamper, C. Huisman, A. Bosch
NIDI
- 3/1998/E/n°4 Stock de migrants et population d'origine étrangère – Comparaison des concepts dans les pays de l'UE
B. Krekels, M. Poulain
- 3/1998/E/n°5 ESSPROS
- 3/1998/E/n°6 Household Budget Surveys – Methodology 1997
- 3/1998/E/n°7 La mesure de la migration clandestine en Europe
D. Delaunay, G. Tapinos
- 3/1998/E/n°8 Long-term mortality scenarios for the countries of the European Economic Area
W. van Hoorn, J. de Beer
- 3/1998/E/n°9 Méthodes de collecte des statistiques de morbidité
- 3/1998/E/n°10 Couverture des questions de santé publique par les enquêtes menées au sein de l'UE
- 3/1998/E/n°12 International Migration Statistics in the Mediterranean Countries: current data sources and statistics available from international organisations
D. Pearce

CORRIGENDUM
TO
EUROSTAT WORKING PAPER 3/1998/E/N°12

p. 45 – Last item of the list, please read

« 3/1998/E/n°12 International Migration Statistics in the Mediterranean
Countries: current data sources and statistics available from
international organisations
D. Pearce»