



Brussels, 11.10.2021
SWD(2021) 1001 final

PART 5/38

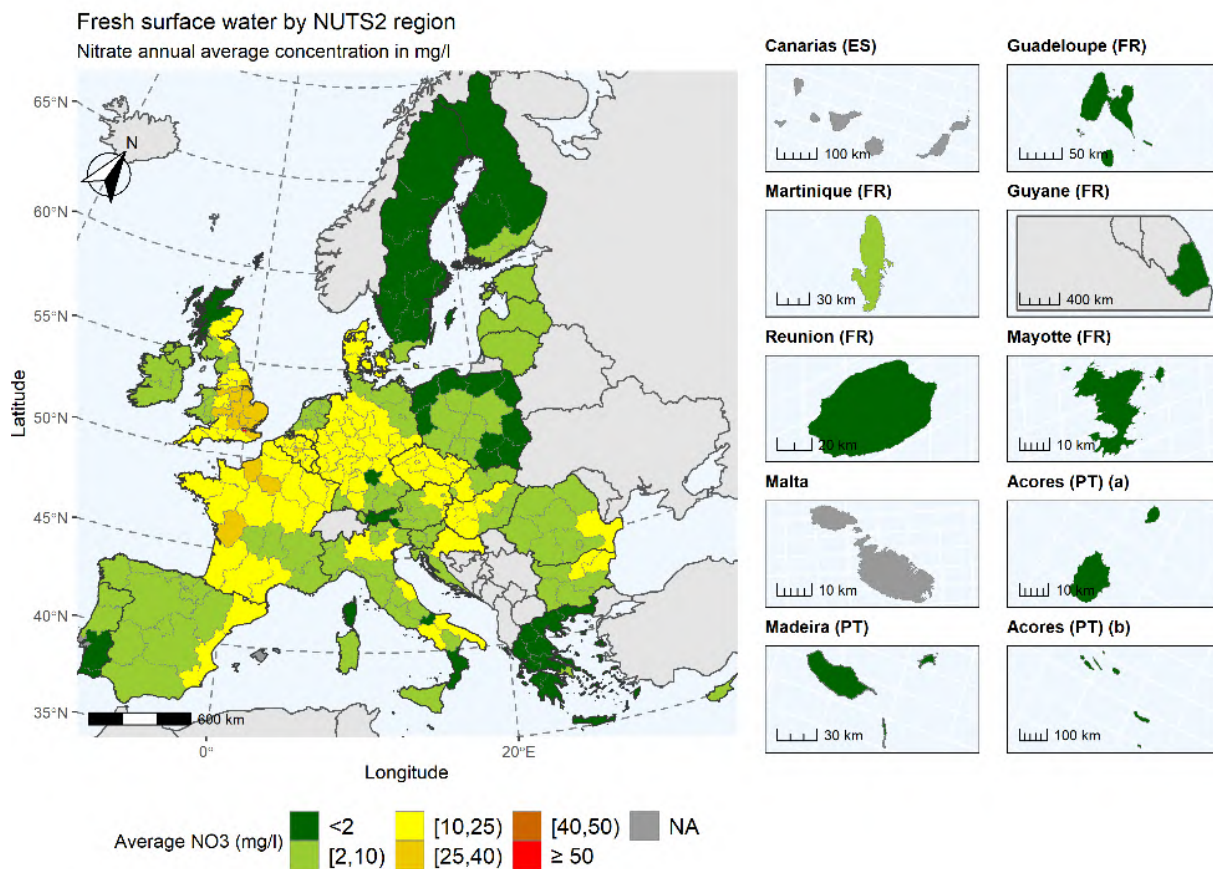
COMMISSION STAFF WORKING DOCUMENT

Accompanying the document

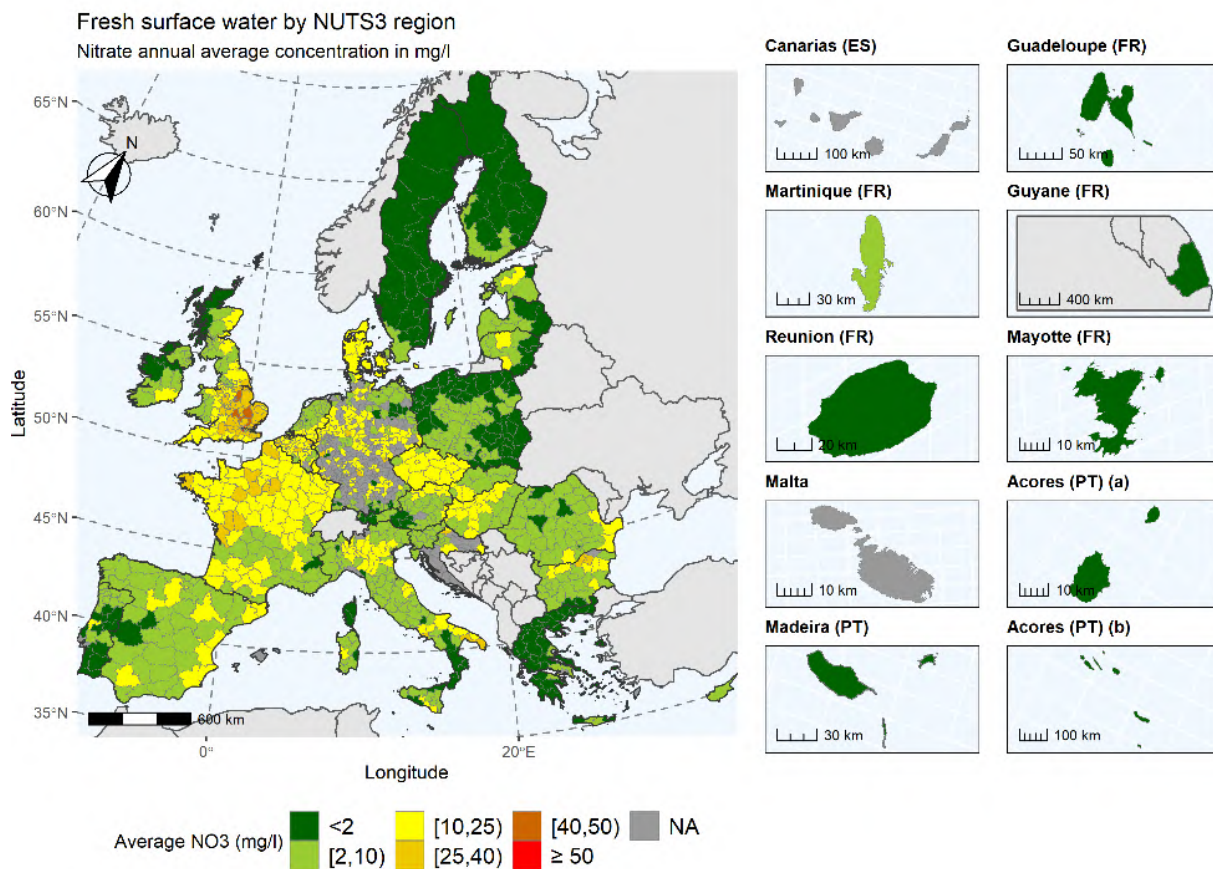
**REPORT FROM THE COMMISSION TO THE COUNCIL AND THE EUROPEAN
PARLIAMENT**

**on the implementation of Council Directive 91/676/EEC concerning the protection of
waters against pollution caused by nitrates from agricultural sources based on Member
State reports for the period 2016–2019**

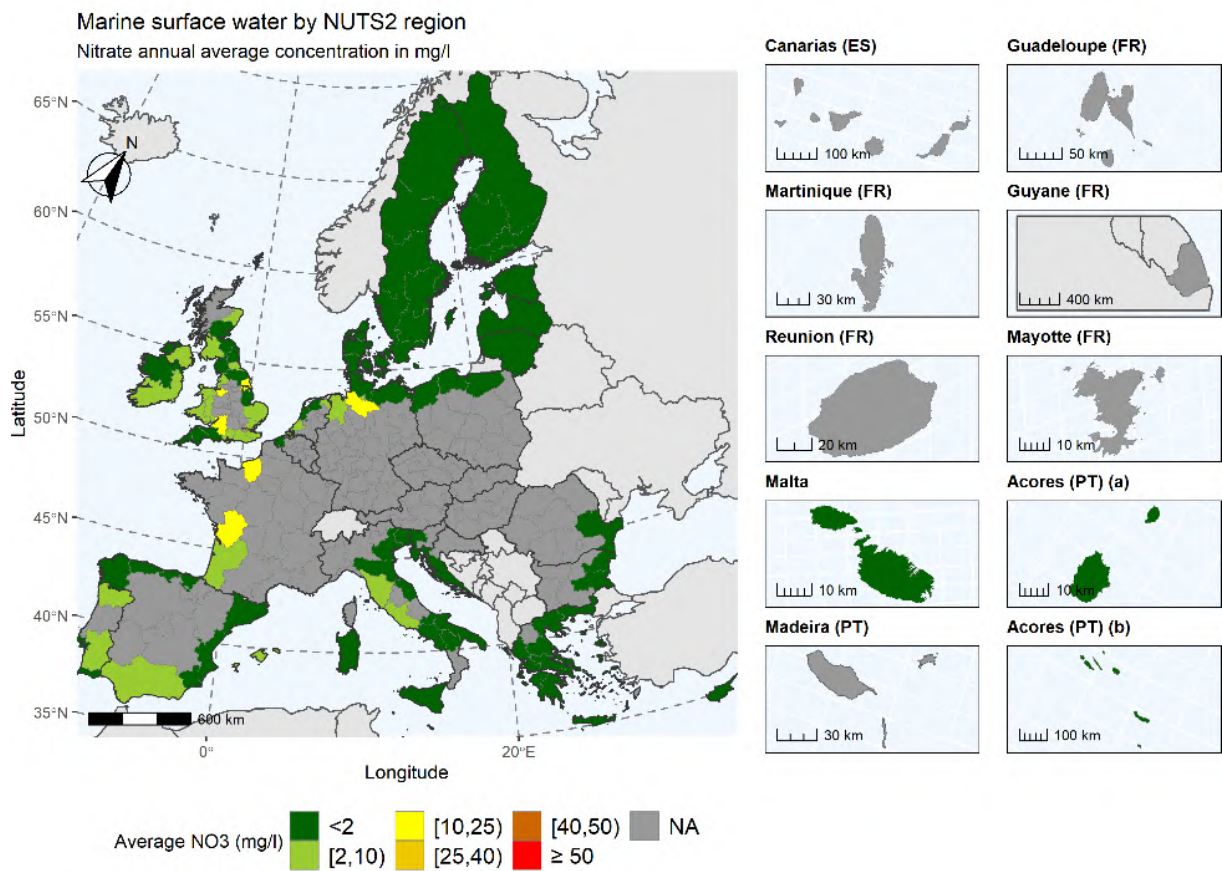
{COM(2021) 1000 final}



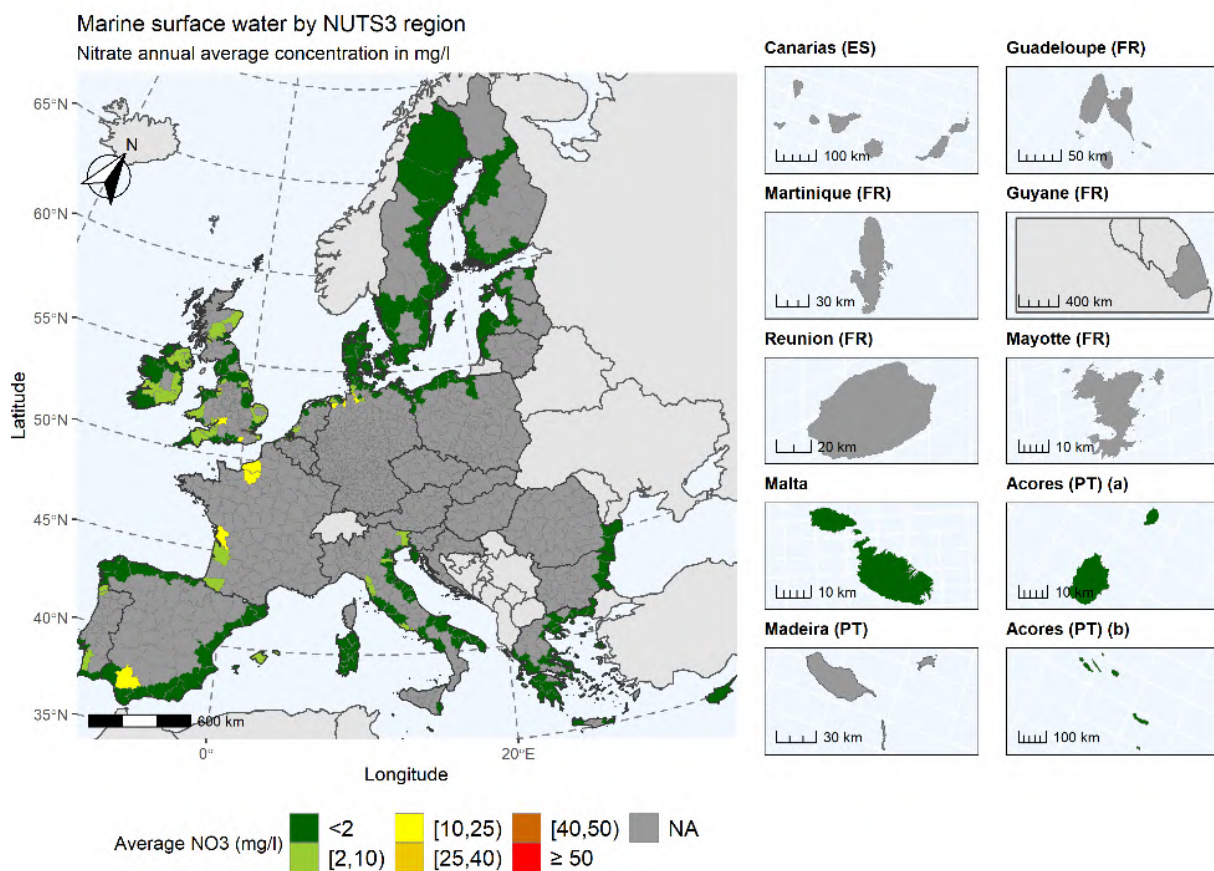
Map 20: Annual average nitrate concentrations in fresh surface water (river, lake/reservoir) at the NUTS2 level, for the reporting period 2016-2019. The label 'NA' stands for not available data.



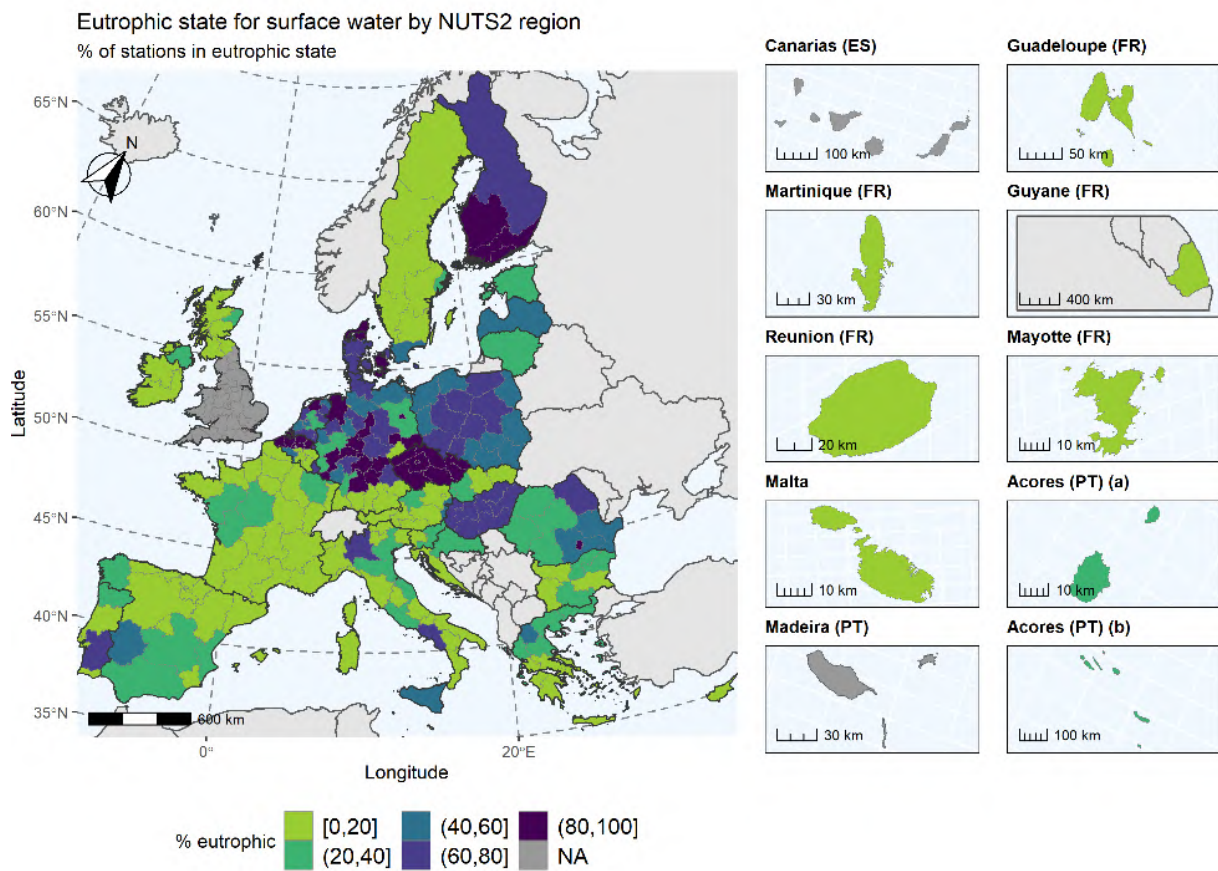
Map 21: Annual average nitrate concentrations in fresh surface water (river, lake/reservoir) at the NUTS3 level, for the reporting period 2016-2019. The label 'NA' stands for not available data.



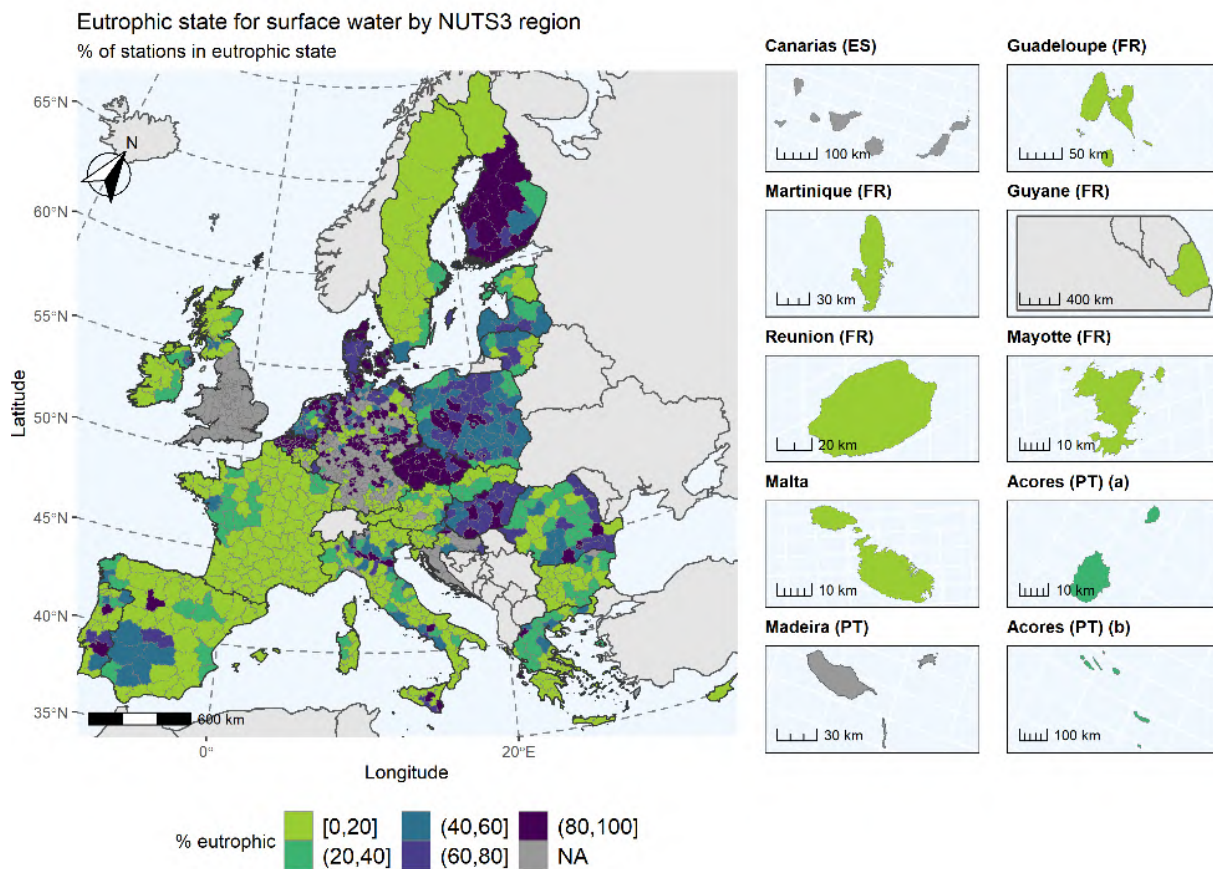
Map 22: Annual average nitrate concentrations in saline surface water (transitional, coastal, and marine waters) at the NUTS2 level, for the reporting period 2016-2019. The label 'NA' stands for not available data.



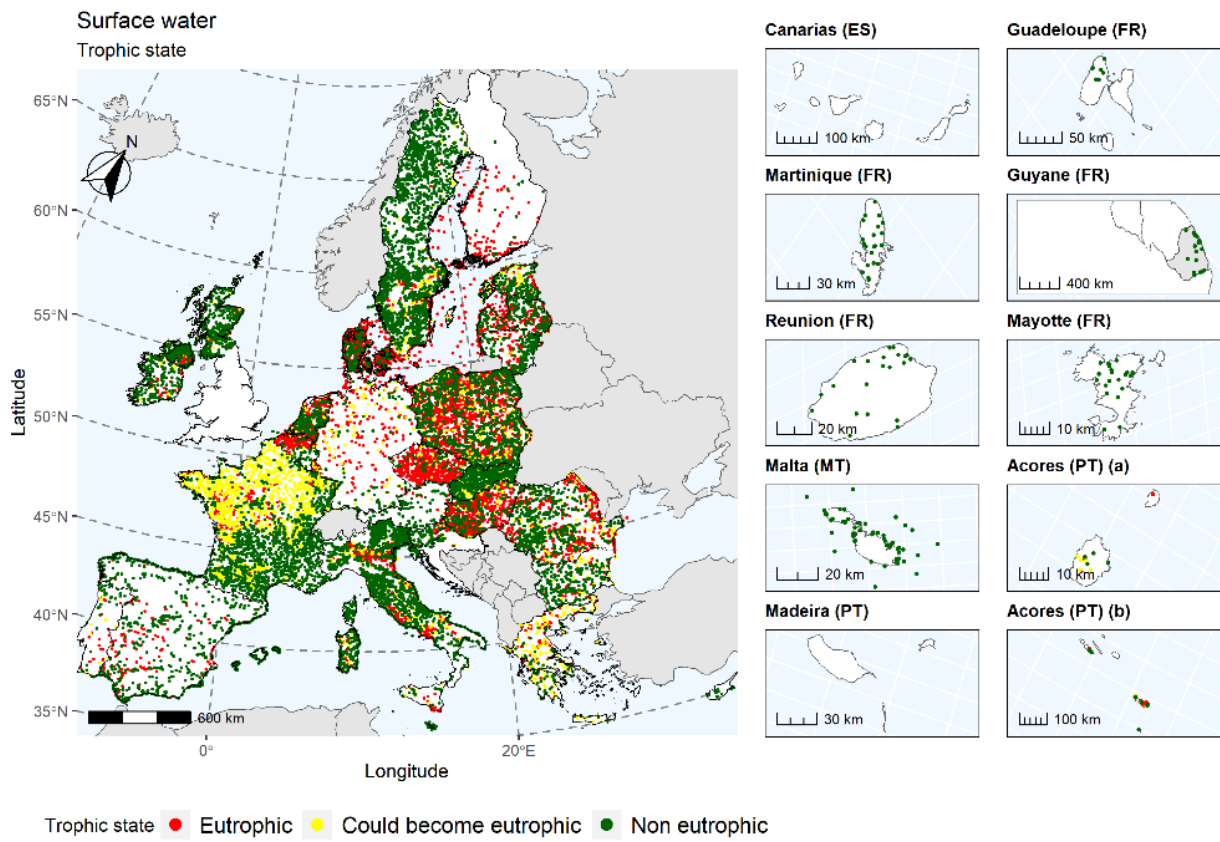
Map 23: Annual average nitrate concentrations in saline surface water (transitional, coastal, and marine waters) at the NUTS3 level, for the reporting period 2016-2019. The label 'NA' stands for not available data.



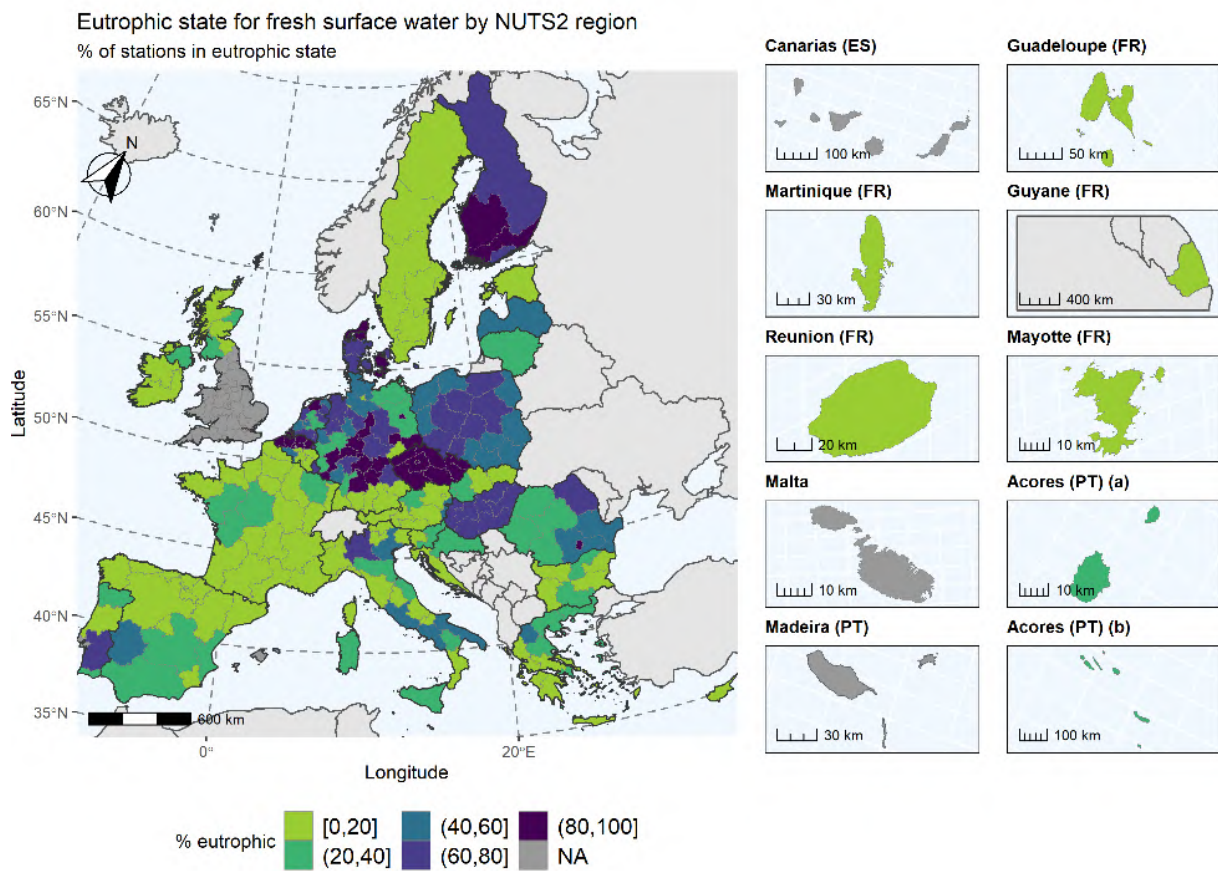
Map 24: Percentage of surface waters stations (all categories) in eutrophic status at the NUTS2 level, for the reporting period 2016-2019. The label 'NA' stands for not available data.



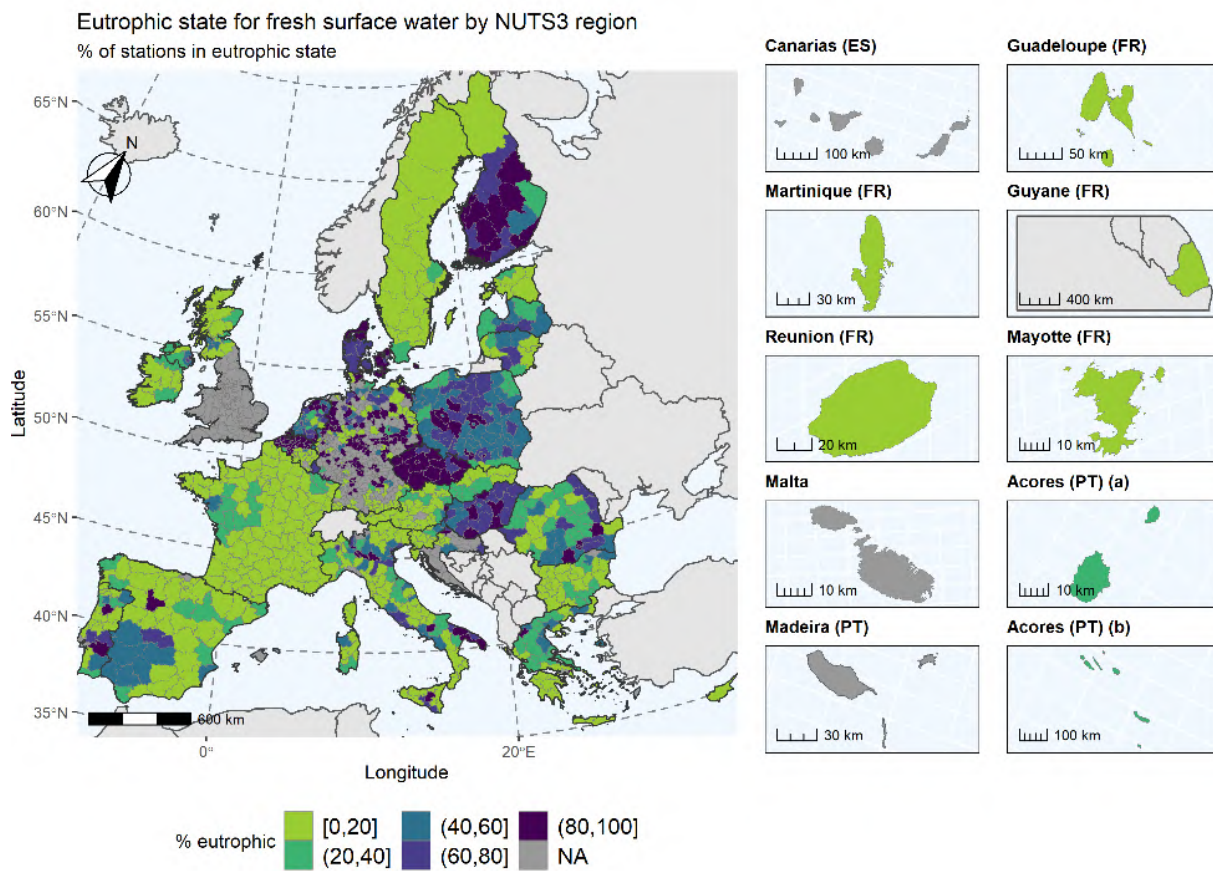
Map 25: Percentage of surface waters stations (all categories) in eutrophic status at the NUTS3 level, for the reporting period 2016-2019. The label 'NA' stands for not available data.



Map 26: Trophic status in surface water (all categories) for the reporting period 2016-2019



Map 27: Percentage of fresh surface water stations (river, lake/reservoir) in eutrophic status at the NUTS2 level, for the reporting period 2016-2019. The label 'NA' stands for not available data.



Map 28: Percentage of fresh surface water stations (river, lake/reservoir) in eutrophic status at the NUTS3 level, for the reporting period 2016-2019. The label 'NA' stands for not available data.