



Brussels, 4.5.2018  
SWD(2018) 246 final

PART 1/9

**COMMISSION STAFF WORKING DOCUMENT**  
*Accompanying the document*

**Report from the Commission to the Council and the European Parliament  
on the implementation of Council Directive 91/676/EEC concerning the protection of  
waters against pollution caused from agricultural sources based on Member State  
reports for the period 2012-2015**

{ COM(2018) 257 final }

*Table 1. Number of stations and station density (stations per 1,000 km<sup>2</sup> of land) of reported groundwater monitoring of annual average nitrate measurements in reporting periods 2008-2011 and 2012-2015, the change (%) between both periods, and the annual average sampling frequency in 2012-2015.*

*Table 2. Number of stations and station density (stations per 1,000 km<sup>2</sup> of land) of reported fresh surface water monitoring of annual average nitrate measurements in reporting periods 2008-2011 and 2012-2015, the change (%) between both periods, and the annual average sampling frequency in 2012-2015.*

*Table 3. Number of stations of reported saline surface water monitoring of annual average nitrate measurements in reporting periods 2008-2011 and 2012-2015, and the change (%) between both periods.*

*Table 4. Percentage of groundwater monitoring points per water quality class (annual average nitrate concentration in mg nitrate per L) for all stations of the EU 28 Member States for the period 2008-2011 and 2011-2015.*

*Table 5. Percentage of fresh surface water monitoring points per water quality class (annual average nitrate concentration in mg nitrate per L) for all stations of the EU 28 Member States for the period 2008-2011 and 2011-2015.*

*Table 6. Annual average nitrogen discharge (kton N) to the aquatic environment and relative contribution of agriculture (%), presented in the article 10 reports of the Member States for reporting periods 2008-2011 and 2012-2015. \* If different from 2008-2001 and 2012-2015.*

*Table 7. Average livestock numbers (1,000,000) presented in the article 10 reports of the Member States for reporting periods 2008-2011 and, 2012-2015, and the change between the two reporting periods.*

*Table 8. Average annual animal manure nitrogen and fertiliser nitrogen use (1,000 kg N) presented in the article 10 reports of the Member States for reporting periods 2008-2011 and 2012-2015, and the change between the two reporting periods.*

*Table 9. Utilized agricultural area (1,000 ha) in the period 2008-2015, and the change between the periods 2008-2011 and 2012-2015 (Source: Eurostat, June 2017).*

*Table 10. Number of farms in 2010 and 2013, and the change between 2010 and 2013 (Source: Eurostat, June 2017).*

*Table 11. Average farm size (ha) in 2010 and 2013, and the change between 2010 and 2013 (Source: Eurostat, June 2017).*

*Table 12. Number of total cattle (1,000) in the period 2008-2015, and the change between the periods 2008-2011 and 2012-2015 (Source: Eurostat, June 2017).*

*Table 13. Number of dairy cattle (1,000) in the period 2008-2015, and the change between the periods 2008-2011 and 2012-2015 (Source: Eurostat, June 2017).*

*Table 14. Number of pigs (1,000) in the period 2008-2015, and the change in number between the periods 2008-2011 and 2012-2015 (Source: Eurostat, June 2017).*

*Table 15. Number of poultry (1,000) in 2010 and 2013, and the change between the years 2010 and 2013 (Source: Eurostat, June 2017).*

*Table 16. Number of sheep (1,000) in the period 2008-2015, and the change in number between the periods 2008-2011 and 2012-2015 (Source: Eurostat, June 2017).*

*Table 17. Number of Livestock Units (1,000) in 2010 and 2013, and the change between the years 2010 and 2013 (Source: Eurostat, June 2017).*

*Table 18. Livestock density (LU per ha UAA) in 2010 and 2013, and the change between the years 2010 and 2013 (Source: Eurostat, June 2017).*

*Table 19. Fertiliser nitrogen use (1,000 kg N) in the period 2008-2015, and the change between the periods 2008-2011 and 2012-2015 (Source: Eurostat, June 2017).*

*Table 20. Fertiliser phosphate use (1,000 kg P) in the period 2008-2015, and the change between the periods 2008-2011 and 2012-2015 (Source: Eurostat, June 2017).*

*Table 21. Animal manure nitrogen use (1,000 kg N) in the period 2008-2015, and the change between the periods 2008-2011 and 2012-2015 (Source: Eurostat, June 2017).*

*Table 22. Animal manure phosphate use (1,000 kg P) in the period 2008-2015, and the change between the periods 2008-2011 and 2012-2015 (Source: Eurostat, June 2017).*

*Table 23. Net nitrogen balance (kg N per ha) in the period 2008-2015, and the change between the periods 2008-2011 and 2012-2015 (Source: Eurostat, June 2017).*

*Table 24. Phosphate balance (kg P per ha) in the period 2008-2015, and the change between the periods 2008-2011 and 2012-2015 (Source: Eurostat, June 2017).*

*Table 25. Nitrate vulnerable zones in Member States and Member States applying an action programme to the whole national territory in line with Art. 3(5) of the Nitrates Directive (source: data provided by Member States to JRC).*

*Table 26. Derogations in force at the end of the year 2015.*

- Figure 1. Groundwater station density (stations per 1,000 km<sup>2</sup> of land) in reporting period 2012-2015. Stations with data of average annual nitrate measurements.
- Figure 2. Average annual groundwater sampling frequency in reporting period 2012-2015. Stations with data of average annual nitrate measurements.
- Figure 3. Surface water station density (stations per 1,000 km<sup>2</sup> of land) in reporting period 2012-2015. Stations with data of average annual nitrate measurements.
- Figure 4. Annual average fresh surface water sampling frequency in reporting period 2012-2015. Stations with data of average annual nitrate measurements.
- Figure 5. Frequency diagram of annual average nitrate concentrations in groundwater, at all depths.
- Figure 6. Frequency diagram of annual average nitrate concentrations in groundwater at different depths, aggregated over all Member States.
- Figure 7. Frequency diagram of trends in annual average nitrate concentrations in groundwater at different depths, aggregated over all Member States.
- Figure 8. Frequency diagram of trends in annual average nitrate concentrations in groundwater.
- Figure 9. Frequency diagram of annual average nitrate concentrations in fresh surface waters (rivers and lakes).
- Figure 10. Frequency diagram of annual average nitrate concentrations in different surface waters, aggregated over all Member States.
- Figure 11. Frequency diagram of trends in annual average nitrate concentrations in fresh surface water (rivers and lakes).
- Figure 12. Frequency diagram of the trophic status of rivers in reporting period 2012-2015.
- Figure 13. Frequency diagram of the trophic status of lakes in reporting period 2012-2015.
- Figure 14. Frequency diagram of trophic status classes of transitional waters in reporting period 2012-2015.
- Figure 15. Frequency diagram of trophic status classes of coastal waters in reporting period 2012-2015.
- Figure 16. Frequency diagram of trophic status classes of marine waters in reporting period 2012-2015.
- Figure 17. Frequency diagram of trophic status classes of different water types in reporting period 2012-2015. Note that the number of underlying Member States is different per water type (Annex 2).
- Figure 18 Utilized agricultural area (1,000 ha) in the reporting periods 2008-2011 and 2012-2015 (Source: Eurostat, June 2017).
- Figure 19 Change in utilized agricultural area (%) between the reporting periods 2008-2011 and 2012-2015 (Source: Eurostat, June 2017).
- Figure 20 Number of farms in 2010 and 2013 (Source: Eurostat, June 2017).
- Figure 21 Change in the number of farms (%) between 2010 and 2013 (Source: Eurostat, June 2017).
- Figure 22 Average farm size (ha) in 2010 and 2013 (Source: Eurostat, June 2017).

Figure 23 *Change in average farm size (%) between 2010 and 2013 (Source: Eurostat, June 2017).*

Figure 24 *Average number of total cattle (1,000) in the reporting periods 2008-2011 and 2012-2015 (Source: Eurostat, June 2017).*

Figure 25 *Change in the number of total cattle (%) between the reporting periods 2008-2011 and 2012-2015 (Source: Eurostat, June 2017).*

Figure 26 *Average number of dairy cattle (1,000) in the reporting periods 2008-2011 and 2012-2015 (Source: Eurostat, June 2017).*

Figure 27 *Change in the number of dairy cattle (%) between the reporting periods 2008-2011 and 2012-2015 (Source: Eurostat, June 2017 ).*

Figure 28 *Average number of pigs (1,000) in the reporting periods 2008-2011 and 2012-2015 (Source: Eurostat, June 2017).*

Figure 29 *Change in the number of pigs (%) between the reporting periods 2008-2011 and 2012-2015 (Source: Eurostat, June 2017).*

Figure 30 *Average number of poultry (1,000) in 2010 and 2013 (Source: Eurostat, June 2017).*

Figure 31 *Change in the number of poultry (%) between 2010 and 2013 (Source: Eurostat, June 2017).*

Figure 32 *Average number of sheep (1,000) in the reporting periods 2008-2011 and 2012-2015 (Source: Eurostat, June 2017).*

Figure 33 *Change in the number of sheep (%) between the reporting periods 2008-2011 and 2012-2015 (Source: Eurostat, June 2017).*

Figure 34 *Average number of Livestock Units (1,000) in 2010 and 2013 (Source: Eurostat, June 2017 ).*

Figure 35 *Change in the number of Livestock Units (%) between 2010 and 2013 (Source: Eurostat, June 2017).*

Figure 36 *Average livestock density (LU per ha UAA) in 2010 and 2013 (Source: Eurostat, June 2017).LU = LiveStock Unit; UAA=Utilised Agricultural Area.*

Figure 37 *Change in livestock density (%) between 2010 and 2013 (Source: Eurostat, June 2017).*

Figure 38 *Fertiliser nitrogen use (1,000 kg N) in the period 2008-2015 (Source: Eurostat, June 2017).*

Figure 39 *Change in fertiliser nitrogen use (%) between the reporting periods 2008-2011 and 2012-2015 (Source: Eurostat, June 2017).*

Figure 40 *Fertiliser phosphate use (1,000 kg P) in the period 2008-2015 (Source: Eurostat, June 2017).*

Figure 41 *Change in fertiliser phosphate use (%) between the reporting periods 2008-2011 and 2012-2015 (Source: Eurostat, June 2017).*

Figure 42 *Animal manure nitrogen use (1,000 kg N) in the period 2008-2015 (Source: Eurostat, June 2017).*

Figure 43 *Change in animal manure nitrogen use (%) between the reporting periods 2008-2011 and 2012-2015 (Source: Eurostat, June 2017).*

Figure 44 *Animal manure phosphate use (1,000 kg P) in the period 2008-2015 (Source: Eurostat, June 2017).*

Figure 45 *Change in animal manure phosphate use (%) between the reporting periods 2008-2011 and 2012-2015 (Source: Eurostat, June 2017).*

Figure 46 *Average net nitrogen balance (kg N/ha) in the reporting periods 2008-2011 and 2012-2015 (Source: Eurostat, June 2017).*

Figure 47 *Change in the net nitrogen balance (%) between the reporting periods 2008-2011 and 2012-2015 (Source: Eurostat, June 2017).*

Figure 48 *Average phosphate balance (kg P/ha) in the reporting periods 2008-2011 and 2012-2015 (Source: Eurostat, June 2017).*

Figure 49 *Change in the phosphate balance (kg P/ha) between the reporting periods 2008-2011 and 2012-2015 (Source: Eurostat, June 2017).*

- Map 1. Annual average nitrate concentrations in groundwater for the reporting period 2012-2015.
- Map 2. Stations with annual average nitrate concentrations equal to or exceeding 50 mg/L in groundwater for the reporting period 2012-2015.
- Map 3. Maximum nitrate concentrations in groundwater for the reporting period 2012-2015
- Map 4. Trends in nitrates concentrations in groundwater between the reporting periods 2008-2011 and 2012-2015 in all stations.
- Map 5. Trends in nitrates concentrations in groundwater between the reporting periods 2008-2011 and 2012-2015, for stations with an average annual nitrate concentration below 25 mg/L in 2012-2015.
- Map 6. Trends in nitrates concentrations in groundwater between the reporting periods 2008-2011 and 2012-2015, for stations with an average annual nitrate concentration between 25 and 40 mg/L in 2012-2015.
- Map 7. Trends in nitrates concentrations in groundwater between the reporting periods 2008-2011 and 2012-2015, for stations with an average annual nitrate concentration between 40 and 50 mg/L in 2012-2015.
- Map 8. Trends in nitrates concentrations in groundwater between the reporting periods 2008-2011 and 2012-2015, for stations with an average annual nitrate concentration equal to or above 50 mg/L in 2012-2015.
- Map 9. Annual average nitrate concentrations in surface water for the reporting period 2012-2015.
- Map 10. Winter average nitrate concentrations in surface water for the reporting period 2012-2015.
- Map 11. Maximum nitrate concentrations in surface water for the reporting period 2012-2015.
- Map 12. Trends in annual average nitrate concentrations in surface water between the reporting periods 2008-2011 and 2012-2015 for all.
- Map 16. Trends in winter average nitrate concentrations in surface water between the reporting periods 2008-2011 and 2012-2015.
- Map 13. Trends in annual average nitrate concentrations in surface water between the reporting periods 2008-2011 and 2012-2015 for stations with an average annual nitrate concentration between 2 and 10 mg/L in 2012-2015.
- Map 14. Trends in annual average nitrate concentrations in surface water between the reporting periods 2008-2011 and 2012-2015 for stations with an average annual nitrate concentration between 10 and 25 mg/L in 2012-2015.
- Map 15. Trends in annual average nitrate concentrations in surface water between the reporting periods 2008-2011 and 2012-2015 for stations with an average annual nitrate concentration between 25 and 40 mg/L in 2012-2015.
- Map 17. Trophic status in surface waters for the reporting period 2012-2015.
- Map 18. Implementation of Article 3 of the Nitrates Directive in 2015 (Source: JRC).

## SECTION I

### WATER QUALITY: STATUS AND TRENDS

#### Monitoring networks

##### *Groundwater*

In the reporting period 2012-2015, the total number of groundwater monitoring stations with annual average nitrate measurements in the EU-28 was 34,091 which is an average of 7.8 stations per 1,000 km<sup>2</sup> of land ((*Table 1, Figure 1*). The station density varies from 0.6 in Finland to 130 stations per 1,000 km<sup>2</sup> of land in Malta. Compared to the previous reporting period 2008-2011 the overall number of monitoring stations remained nearly the same. Relatively large (<-10%) decreases were seen in Spain, Portugal and Romania, while relative large increases (>+10%) were seen in Estonia, Greece, Finland, Latvia, Poland, Sweden and Slovenia.

The average sampling frequency of groundwater is nearly twice a year, and varies from less than once a year in, Denmark, Latvia, Poland and Sweden to around 5 times a year in Belgium and Croatia (*Figure 2*).

##### *Fresh surface water*

In the reporting period 2012-2015, the total number of fresh surface water monitoring stations with annual average nitrate measurements in the EU-28 was 33,042 which is an average of 7.6 stations per 1,000 km<sup>2</sup> of land (*Table 2, Figure 3*). The station density varies from 0.5 per 1,000 km<sup>2</sup> in Finland to 34 stations per 1,000 km<sup>2</sup> of land in the United Kingdom. Compared to the previous reporting period 2008-2011, the overall number of monitoring stations increased by 23% (*Table 2*). Relatively large (<-10%) decreases were seen in Germany, Latvia, Malta, Poland and Slovakia, while relative large increases (>+10%) were seen in Cyprus, Czech Republic, Estonia, Greece, Finland, Italy, Lithuania, the Netherlands, Sweden and the United Kingdom.

The average sampling frequency is around four times a year, and varies from almost once a year in Sweden to just over 20 times a year in Ireland (*Figure 4*).

##### *Saline surface water*

In the reporting period 2012-2015, the total number of saline surface water monitoring stations with annual average nitrate measurements in the EU-28 was 2,205 (*Table 3*). Compared to the previous reporting period 2008-2011 the overall number of monitoring stations decreased by 29% (*Table 2*). Relatively large (<-10%) decreases were seen in Bulgaria, Denmark, Greece, Spain, France, Poland, Portugal, Romania and Sweden, while relative large increases (>+10%) were seen in Estonia, Finland, Ireland and Malta.

#### Water Quality- Nitrates concentrations

##### *Groundwater*

In the reporting period 2012–2015, the average annual nitrate concentration was equal to or exceeded 50 mg/L at 13.2% of the monitoring stations in the EU-28 (**Error! Reference source not found.**, *Figure 5*). This varied from no exceeding stations in Ireland, or less than 5% in Finland, Sweden, Lithuania, Latvia, Croatia and Estonia, to more than 20% in Spain, Germany and Malta. Overall, at EU-28 level, there is a slight improvement compared to the previous reporting period, in which 14.1% of the monitoring stations were equal to or exceeded an average annual nitrate concentration of 50 mg/L. In this reporting period the average annual nitrate concentration was between 40 and 50 mg/L at 5.7 % of the monitoring station in the EU-28.



The lowest nitrate concentrations are observed in captive and karstic<sup>1</sup> groundwater with around 5% of stations equal to or exceeding 50 mg/L (*Figure 6*). In phreatic groundwater the proportion of stations equal to or exceeding 50 mg/L varied from 13% to 19%, with the highest values observed for groundwater depths of 5 to 15 meter. A similar effect was also observed for the trends (*Figure 8*) with a relatively stable situation for karstic and captive groundwater, and a relatively high proportion of decreasing and increasing trends for phreatic groundwater. The lowest proportion of a stable situation was observed for phreatic groundwater at a depth of 5 to 15 meter.

Maximum nitrate concentrations were equal to or exceeded 50 mg/L in 20.3% of the monitoring stations in the EU-28, varying from 1.1% in Sweden to 75.6% in Malta. There is a slight improvement compared to the previous reporting period, in which 20.9% of the monitoring stations had maximum nitrate concentrations equal to or exceeding 50 mg/L.

Compared to the previous reporting period 2008-2011, 26% of all stations in the EU-28 showed an increasing trend and 32% a decreasing trend (*Figure 8*). Member States with a relatively high proportion (>40%) of stations with increasing trends were Malta, Bulgaria, Estonia and Lithuania.

#### *Fresh surface water*

In the reporting period 2012-2015, the average annual nitrate concentration was equal to or exceeded 50 mg/L at 1.8% of the monitoring station in the EU-28 (*Figure 9*). Another 2.0% of the stations had average annual nitrate concentrations between 40 and 50 mg/l and 8.8% between 25 and 40 mg/L. The lowest annual average nitrate concentrations (highest proportion less than 2 mg/L) in fresh surface water were found in Sweden, Ireland and Greece and the highest (highest proportions equal to or exceeding 50 mg/L) in the United Kingdom, Belgium and Malta.

The highest nitrate concentrations are generally observed in rivers (*Figure 10*).

There is a slight improvement compared to the previous reporting period, in which 2.4% of the monitoring stations had annual average nitrate concentrations equal to or exceeding 50 mg/L and 2.4% showed concentrations between 40 and 50 mg/L (**Error! Reference source not found.**).

Compared to the reporting period 2008-2011, in the EU-28, a decreasing trend in annual average nitrates concentrations was observed in 31% of all freshwaters monitoring stations, of which 9% showed a large decreasing trend. 50% of the monitoring stations showed stable concentrations. An increasing trend in annual average nitrates concentrations was observed in 19% of all freshwaters monitoring stations, of which 5% showed a large increasing trend (*Figure 11*).

#### *Saline surface water*

In saline waters, nitrate concentrations are lower than in fresh water concentrations, with 0.7% of the stations equal to or exceeding 25 mg/L and 75.7% of the stations below 2 mg, based on annual average values.

There is a slight improvement compared to the previous reporting period, in which 1.8% of the monitoring stations had annual average nitrate concentrations equal to or exceeding 25 mg/L.

## **Eutrophication**

---

<sup>1</sup> Karsts are formed by the dissolution of soluble rocks, including limestone and dolomite. Natural features of the landscape such as caves and springs are typical of karst regions. Confined groundwater is separated from atmospheric pressure by relatively impermeable material.

The assessment of the trophic status varied widely among Member States, not only regarding the parameters used, but also concerning the methodologies for the definition of trophic status classes. Information on reference conditions<sup>2</sup> is needed to provide a complete picture on eutrophication. The establishment of reference conditions is needed to identify how present day conditions are different from the reference conditions and to set targets for achieving good ecological status of all European waters within the Water Framework Directive. The data delivery on eutrophication varied per Member State and per water type (*Error! Reference source not found.*). Member States are not required to submit data on trends of eutrophication status. The overall comparison between the eutrophication status of the current and previous reporting period is hampered by differences in methods between Member States and also between reporting periods.

Of all reported river monitoring stations in EU-28, 12% and 7% were eutrophic and hypertrophic, respectively, while 31% and 21% were oligotrophic or ultra-oligotrophic respectively (*Figure 12*). The eutrophication state of rivers varied from no eutrophic or hypertrophic stations in Cyprus to 100% hypertrophic rivers in Malta. Of all the Member states that reported on eutrophication the ones with relative low (<10%) proportions of eutrophic or hypertrophic stations were Cyprus, Slovenia, Portugal, Greece, Northern Ireland, Romania, Latvia and Bulgaria. Of all the Member states that reported on eutrophication, the ones with relatively high (>50%) proportions of eutrophic or hypertrophic stations were Austria, Luxemburg, Spain, Lithuania, Czech Republic, Belgium, Croatia and Malta<sup>3</sup>.

In general, the trophic status of rivers is slightly better than the status of lakes (*Figure 17*).

Of all reported lakes monitoring stations in EU-28, 18% and 8% were eutrophic and hypertrophic, respectively, while 45% and 1% were oligotrophic or ultra-oligotrophic, respectively (*Figure 13*). Of all the Member states that reported on eutrophication, the eutrophication state of lakes varied from no eutrophic or hypertrophic stations in Malta to 100% hypertrophic lakes in Croatia. Member states with relative low (<10%) proportions of eutrophic or hypertrophic stations were Malta<sup>4</sup>, Romania and Austria. Member States with relatively high (>50%) proportions of eutrophic or hypertrophic stations were Bulgaria, Croatia and Poland.

Eutrophication data on transitional, coastal and marine waters were only submitted by a limited number of Member States. For transitional waters, six out of the ten Member States that submitted data, showed a 100% proportion of eutrophic or hypertrophic waters (*Figure 14*). For coastal waters, the proportion of stations with eutrophic or hypertrophic conditions varied from 0% in Slovenia to 100% in Latvia (*Figure 15*). Five out of the ten Member States had more than 50% eutrophic or hypertrophic coastal waters. Marine data on eutrophication were submitted by three Member States (*Figure 16*).

## **Forecast on water quality**

---

<sup>2</sup> The Water Framework Directive requires the establishment of type-specific reference conditions for surface water body types: “For each surface water body type...type-specific hydromorphological and physico-chemical conditions shall be established representing the values of the hydro-morphological and physicochemical quality elements specified...for that surface water body type at high ecological status...Type-specific biological reference conditions shall be established, representing the values of the biological quality elements...for that surface water body type at high ecological status...”

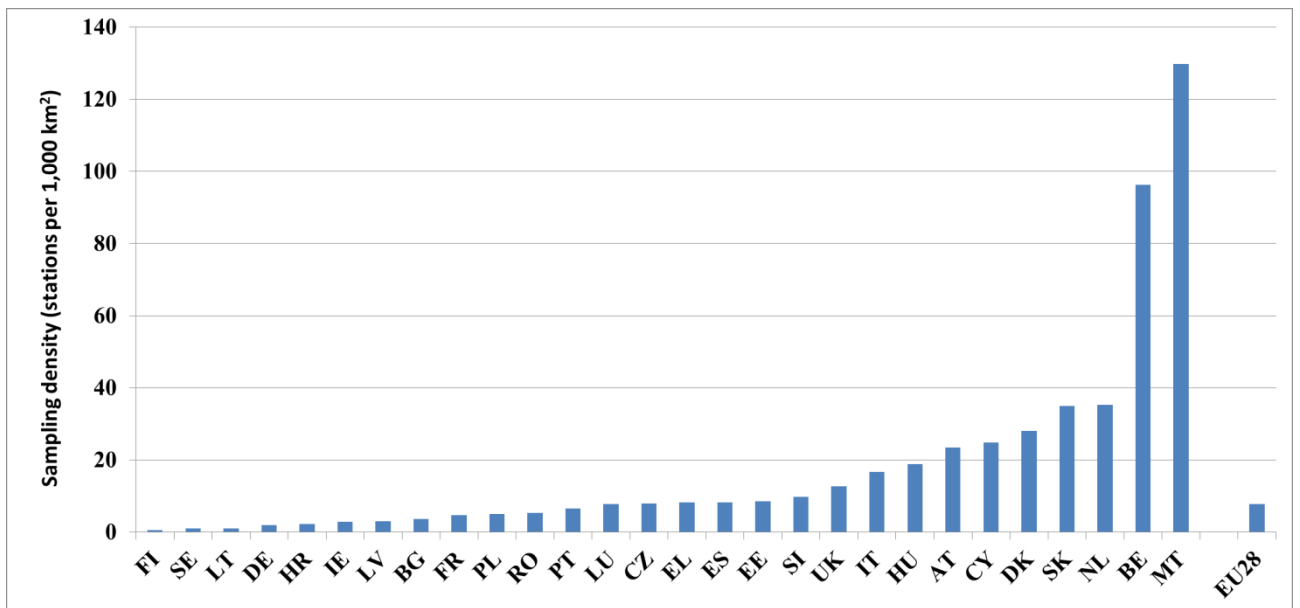
<sup>3</sup> Malta does not have any rivers or lakes but includes valley systems and standing waters as fresh surface water bodies.

<sup>4</sup> Malta does not have any rivers or lakes but includes valley systems and standing waters as fresh surface water bodies.

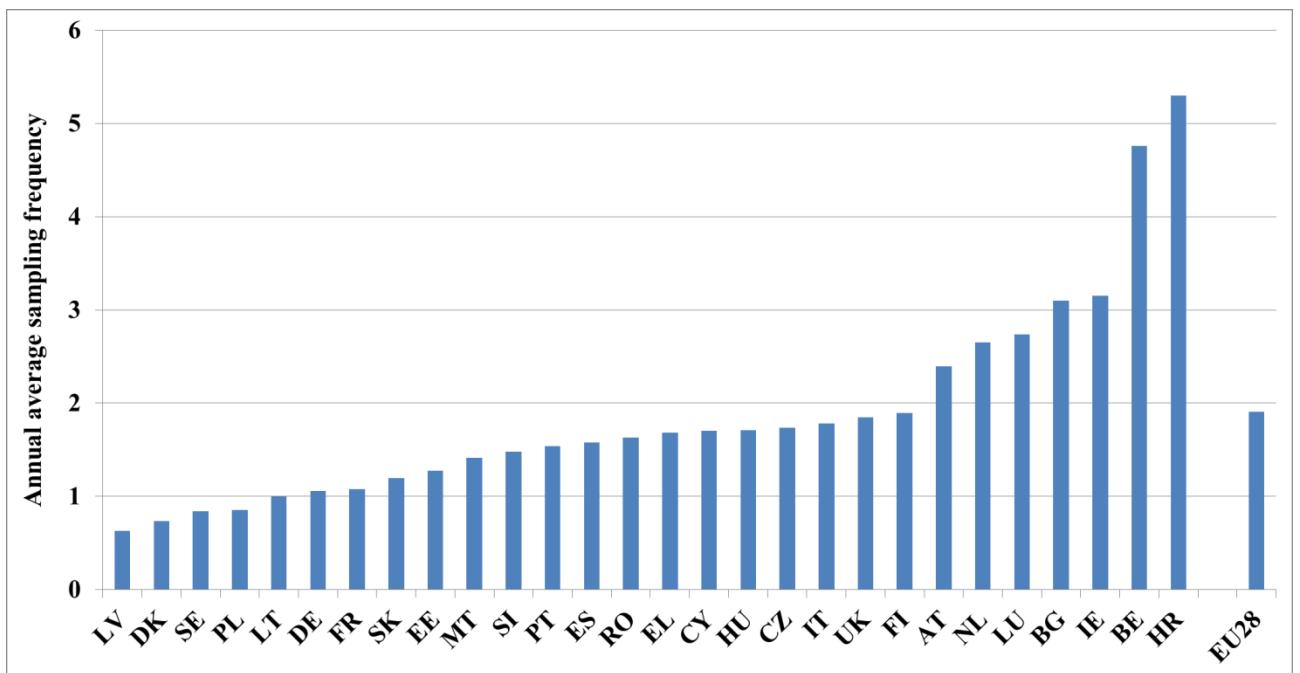
The methods applied by Member States to assess future developments in water quality are mostly based on trend analysis, scenario assessments or model simulations, sometimes combined with analyses of past and expected developments in agricultural practices. These predictions, however, are hampered by large uncertainties, due to the large variations in climate and soil conditions and their effects on water quality.

Four Member States and a region (Croatia, Cyprus, Greece, Portugal and Belgium-Flanders,) did not report on the forecast of water quality. Belgium-Flanders and Cyprus mentioned that reliable forecasts are not possible due to the time lag between measures implementation and effect, or due to complicated climates and hydrology.

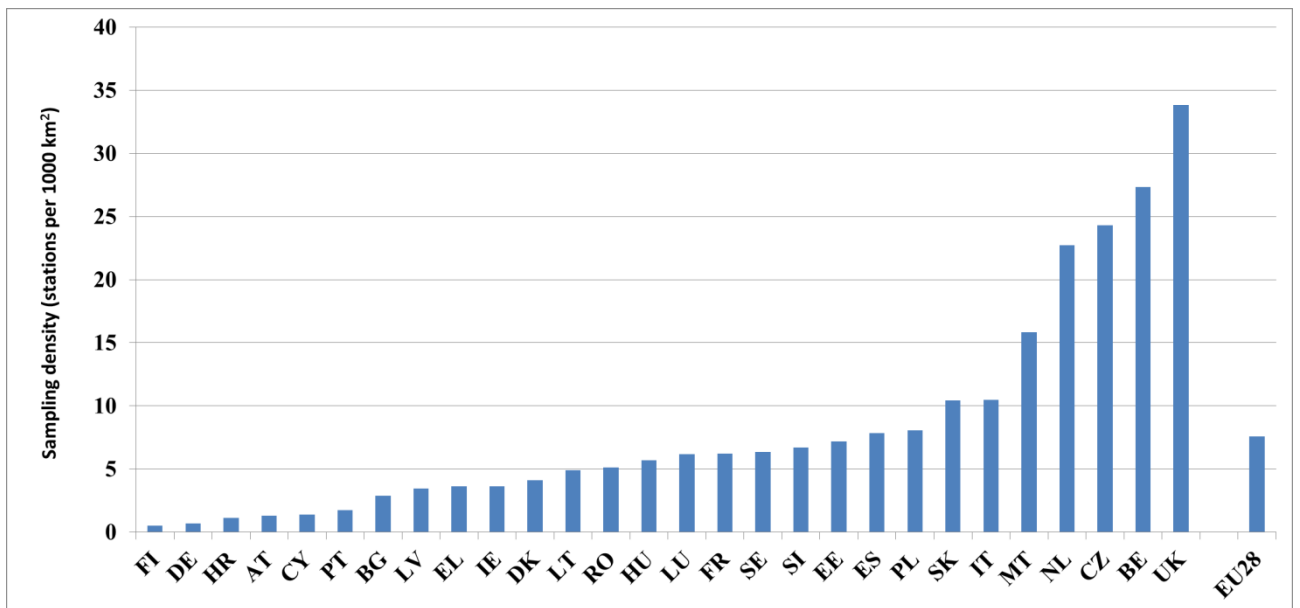
The results of the other available analyses indicate that 14 Member States or regions (Austria, Bulgaria, Czech Republic, Denmark, France, Germany, Hungary, Luxemburg, the Netherlands, Romania, Slovenia, Sweden, UK-Northern Ireland and UK-Scotland) predict a further decrease in nitrate concentrations in groundwater and surface waters, partly due to the expected effect of changes in agricultural practices driven by the Directive implementation and by several agro-environmental measures included in the Rural Development Programmes. Ten Member States or regions (Belgium-Wallonia, Estonia, Finland, Ireland, Italy, Poland, Slovakia, Spain, UK-England and UK-Wales) did not come to a clear direction about future water quality or predicted increasing or decreasing water quality for different water bodies. Lithuania reported that improvements are unlikely given the current set of measures.



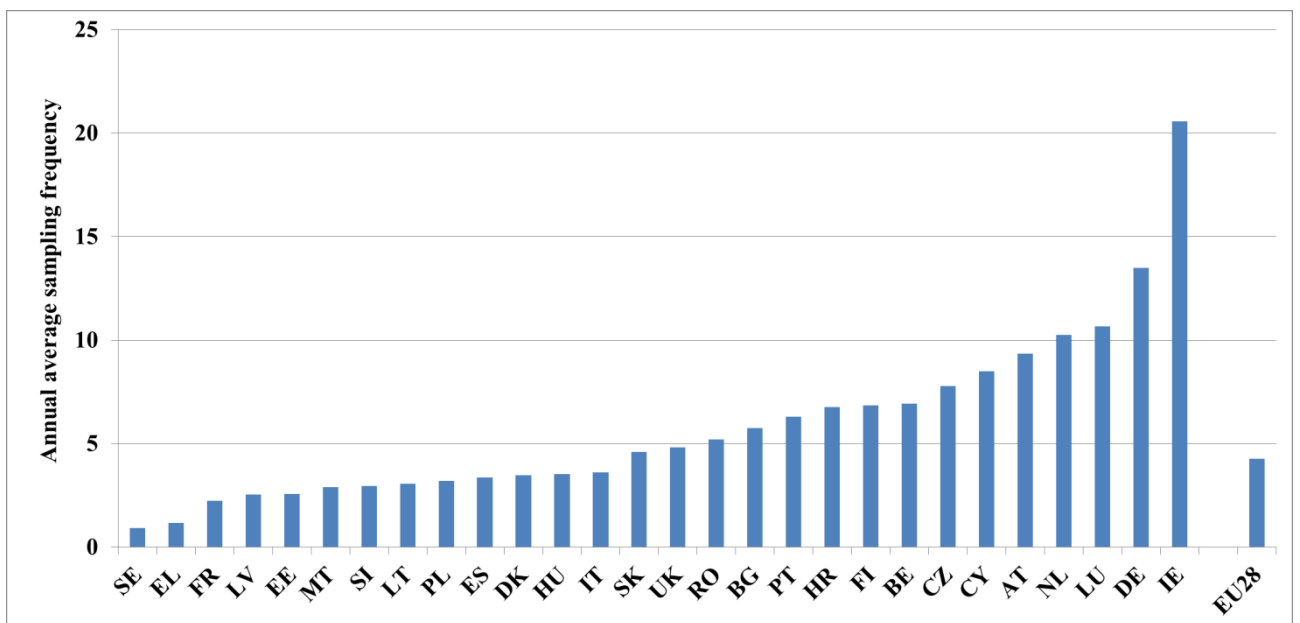
**Figure 1.** Groundwater station density (stations per 1,000 km<sup>2</sup> of land) in reporting period 2012-2015. Stations with data of average annual nitrate measurements.



**Figure 2.** Average annual groundwater sampling frequency in reporting period 2012-2015. Stations with data of average annual nitrate measurements.



**Figure 3.** Surface water station density (stations per 1,000 km<sup>2</sup> of land) in reporting period 2012-2015. Stations with data of average annual nitrate measurements.



**Figure 4.** Annual average fresh surface water sampling frequency in reporting period 2012-2015. Stations with data of average annual nitrate measurements.

MS	Number of stations		Stations per 1000 km <sup>2</sup>		Change	Samplings per year
	2008-2011	2012-2015	2008-2011	2012-2015	(%)	2012-2015
AT	1,965	1,965	23.4	23.4	0.0	2.4
BE	2,974	2,937	97.4	96.2	-1.2	4.8
BG	426	406	3.8	3.7	-4.7	3.1
CY	244	230	26.4	24.9	-5.7	1.7
CZ	611	621	7.7	7.9	1.6	1.7
DE	693	697	1.9	2.0	0.6	1.1
DK	1,254	1,201	29.2	28.0	-4.2	0.7
EE	297	385	6.6	8.5	29.6	1.3
EL	370	1,078	2.8	8.2	191.4	1.7
ES	4,780	4,132	9.6	8.3	-13.6	1.6
FI	79	187	0.2	0.6	136.7	1.9
FR	2,509	2,598	4.6	4.8	3.5	1.1
HR	N.A.	126	N.A.	2.2	N.A.	5.3
HU	1,763	1,756	19.0	18.9	-0.4	1.7
IE	211	205	3.0	2.9	-2.8	3.2
IT	5,296	5,035	17.6	16.7	-4.9	1.8
LT	62	65	0.9	1.0	4.8	1.0
LU	20	20	7.7	7.7	0.0	2.7
LV	173	199	2.7	3.1	15.0	0.6
MT	41	41	129.7	129.7	0.0	1.4
NL	1,321	1,318	35.4	35.3	-0.2	2.7
PL	1,258	1,563	4.0	5.0	24.2	0.9
PT	657	580	7.4	6.5	-11.7	1.5
RO	1,805	1,256	7.6	5.3	-30.4	1.6
SE	326	436	0.7	1.0	33.7	0.8
SI	104	198	5.1	9.8	90.4	1.5
SK	1,717	1,717	35.0	35.0	0.0	1.2
UK	3,087	3,139	12.4	12.6	1.7	1.8
EU	34,043	34,091	7.8	7.8	0.1	1.9

**Table 1.** Number of stations and station density (stations per 1,000 km<sup>2</sup> of land) of reported groundwater monitoring of annual average nitrate measurements in reporting periods 2008-2011 and 2012-2015, the change (%) between both periods, and the annual average sampling frequency in 2012-2015.

MS	Number of stations		Stations per 1000 km <sup>2</sup>		Change (%)	Samplings per year 2012-2015
	2008-2011	2012-2015	2008-2011	2012-2015		
AT	109	108	1.3	1.3	-1	9.3
BE	858	835	28.1	27.4	-3	6.9
BG	305	318	2.8	2.9	4	5.8
CY	10	13	1.1	1.4	30	8.5
CZ	571	1,917	7.2	24.3	236	7.8
DE	303	241	0.8	0.7	-20	13.5
DK	161	177	3.8	4.1	10	3.5
EE	145	324	3.2	7.2	123	2.6
EL	105	479	0.8	3.6	356	1.2
ES	3,730	3,903	7.5	7.8	5	3.4
FI	141	167	0.4	0.5	18	6.9
FR	3,331	3,390	6.1	6.2	2	2.2
HR	N.A.	64	N.A.	1.1	N.A	6.8
HU	525	530	5.6	5.7	1	3.5
IE	252	254	3.6	3.6	1	20.6
IT	2,513	3,154	8.3	10.5	26	3.6
LT	291	320	4.5	4.9	10	3.1
LU	16	16	6.2	6.2	0	10.7
LV	339	222	5.3	3.4	-35	2.5
MT	7	5	22.2	15.8	-29	2.9
NL	457	850	12.2	22.7	86	10.3
PL	2,807	2,526	9.0	8.1	-10	3.2
PT	146	154	1.6	1.7	5	6.3
RO	1,114	1,224	4.7	5.1	10	5.2
SE	187	2,792	0.4	6.4	1393	0.9
SI	139	136	6.9	6.7	-2	3.0
SK	852	512	17.4	10.4	-40	4.6
UK	7,777	8,411	29.7	33.8	14	4.8
EU	26,791	33,042	6.1	7.6	23	4.3

**Table 2.** Number of stations and station density (stations per 1,000 km<sup>2</sup> of land) of reported fresh surface water monitoring of annual average nitrate measurements in reporting periods 2008-2011 and 2012-2015, the change (%) between both periods, and the annual average sampling frequency in 2012-2015.

MS	2008-2011	2012-2015	Change (%)
AT	N.A.	N.A.	N.A.
BE	10	10	0.0
BG	7	6	-14.3
CY	0	16	N.A.
CZ	N.A.	N.A.	N.A.
DE	5	5	0
DK	70	44	-37
EE	23	26	13
EL	11	0	-100
ES	631	250	-60
FI	44	75	70
FR	21	8	-62
HR	N.A.	0	N.A.
HU	N.A.	N.A.	N.A.
IE	104	117	13
IT	584	577	-1
LT	17	16	-6
LU	N.A.	N.A.	N.A.
LV	45	43	-4
MT	31	49	58
NL	43	39	-9
PL	46	19	-59
PT	55	6	-89
RO	54	35	-35
SE	233	184	-21
SI	5	5	0
SK	N.A.	N.A.	N.A.
UK	1065	675	-37
EU	3104	2205	-29

*Table 3. Number of stations of reported saline surface water monitoring of annual average nitrate measurements in reporting periods 2008-2011 and 2012-2015, and the change (%) between both periods.*



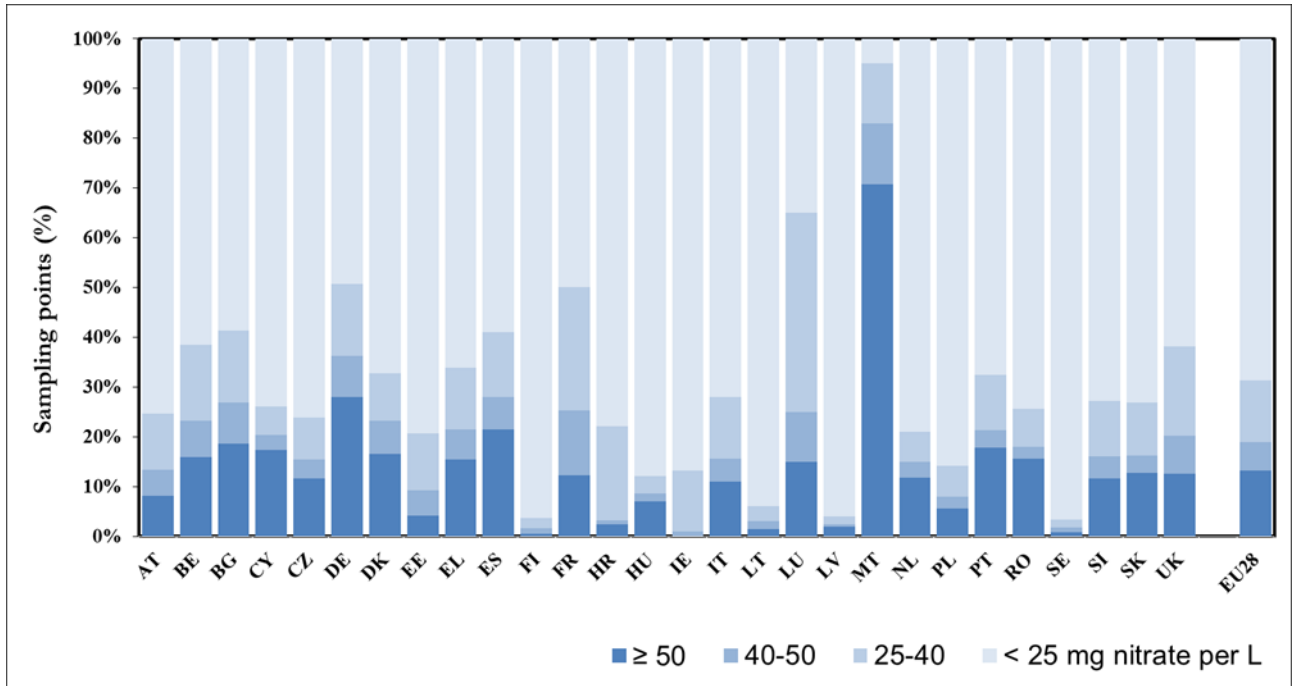


Figure 5. Frequency diagram of annual average nitrate concentrations in groundwater, at all depths.

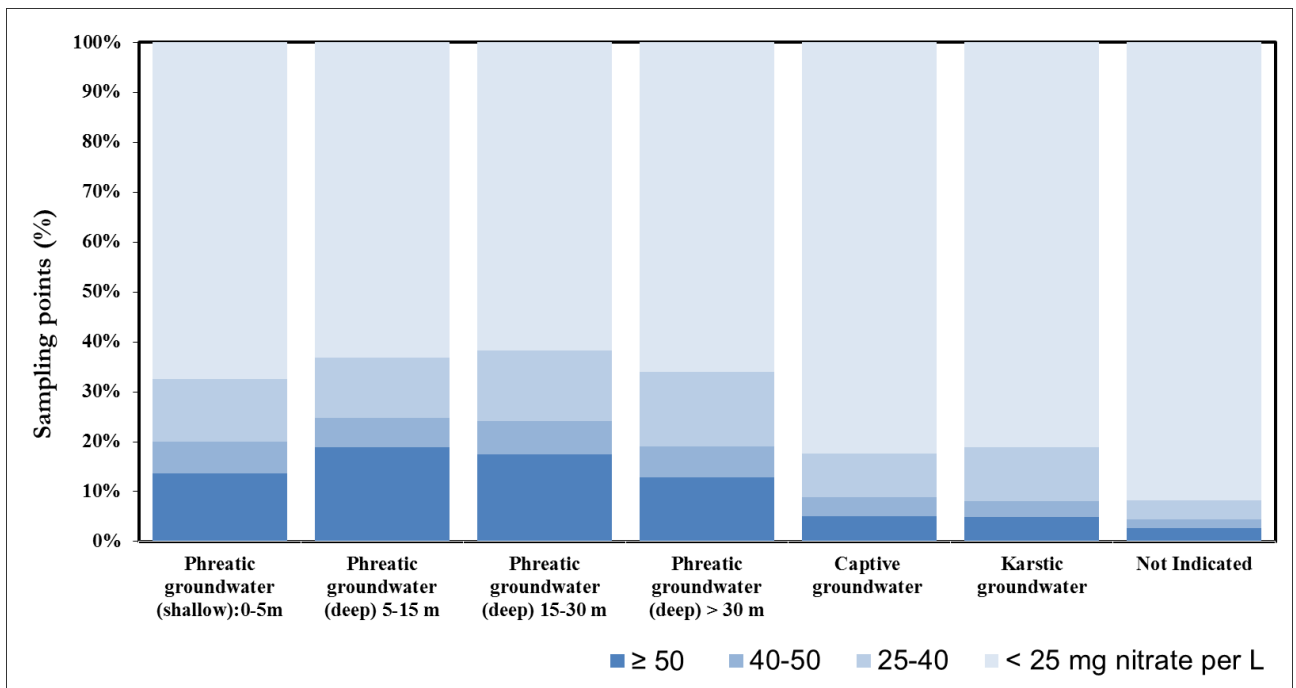


Figure 6. Frequency diagram of annual average nitrate concentrations in groundwater at different depths, aggregated over all Member States.

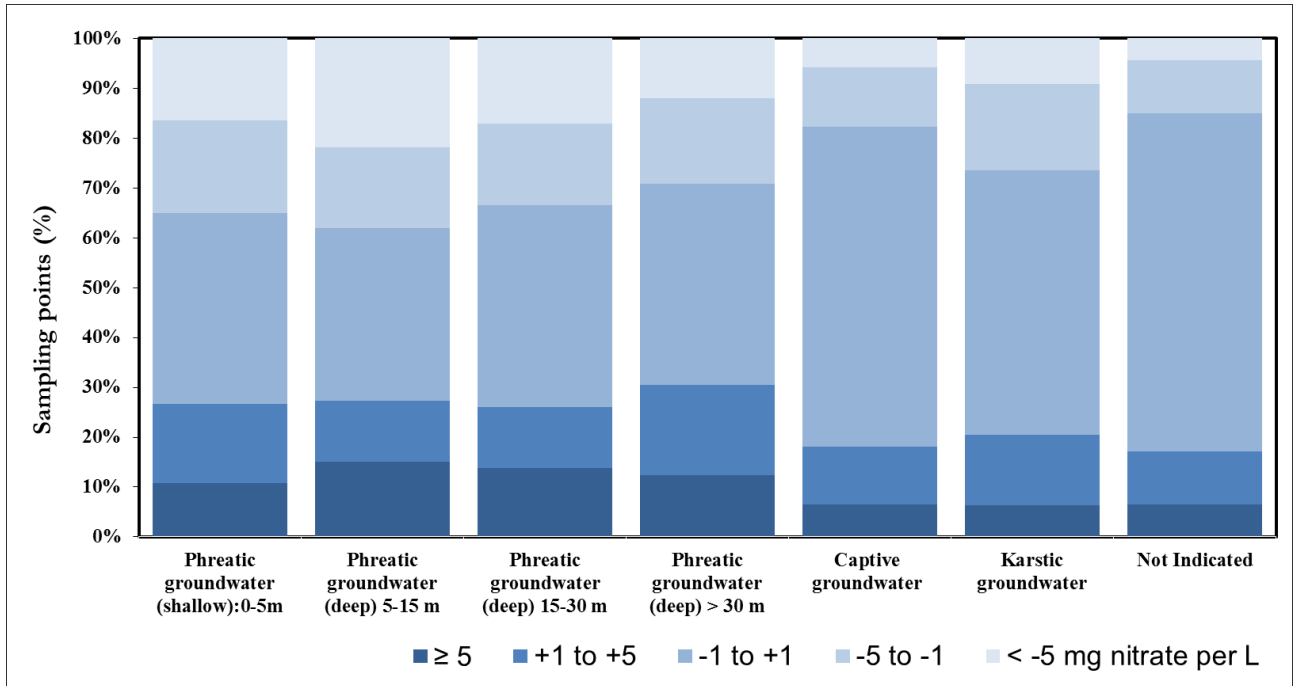


Figure 7. Frequency diagram of trends in annual average nitrate concentrations in groundwater at different depths, aggregated over all Member States.

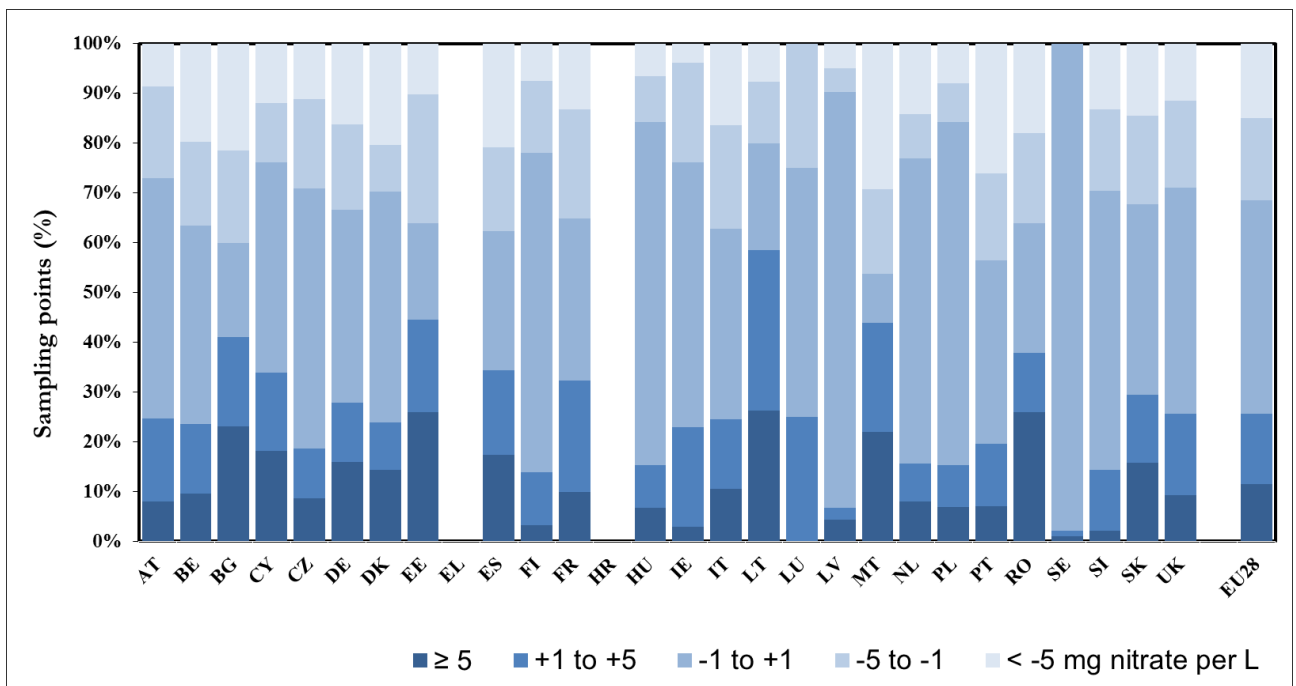
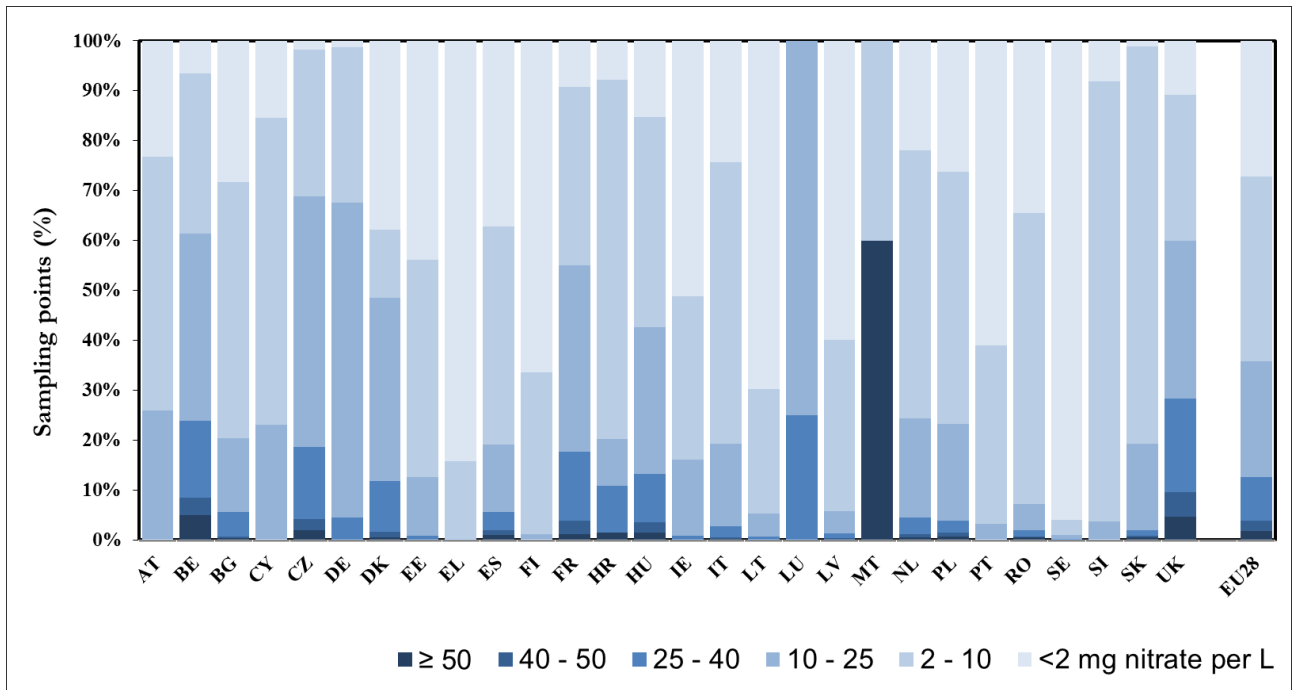
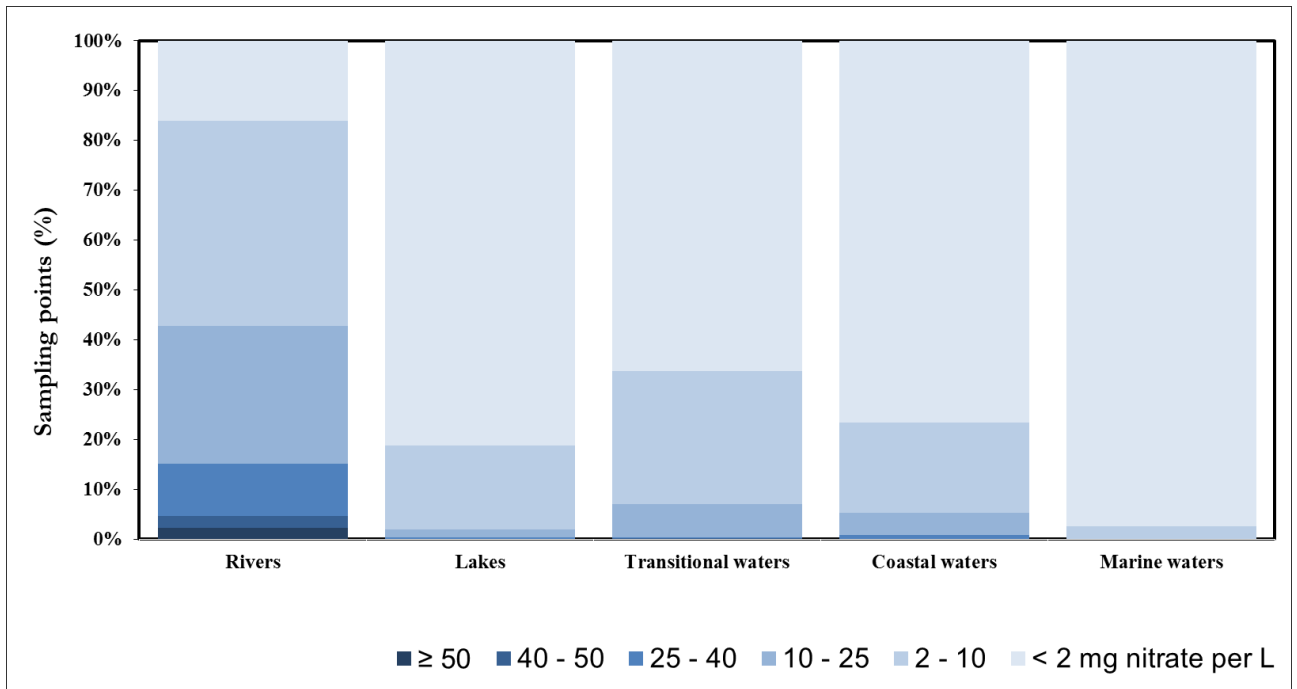


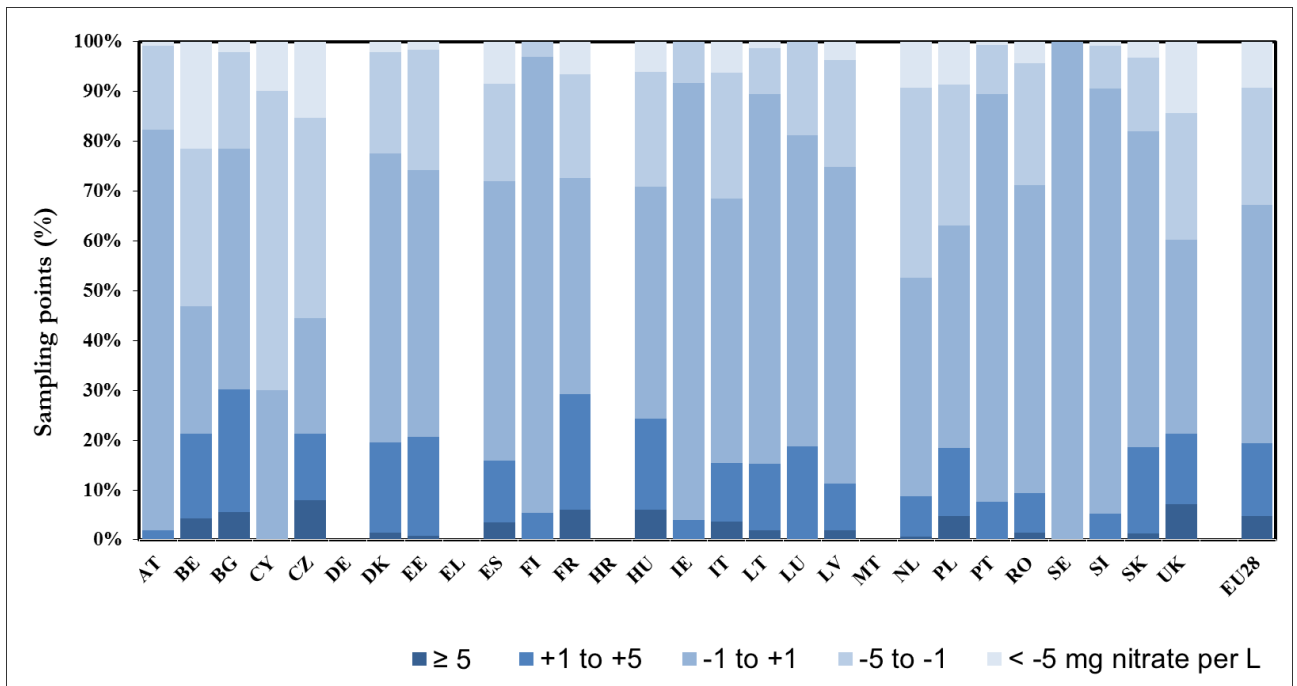
Figure 8. Frequency diagram of trends in annual average nitrate concentrations in groundwater.



**Figure 9.** Frequency diagram of annual average nitrate concentrations in fresh surface waters (rivers and lakes).



**Figure 10.** Frequency diagram of annual average nitrate concentrations in different surface waters, aggregated over all Member States.



**Figure 11.** Frequency diagram of trends in annual average nitrate concentrations in fresh surface water (rivers and lakes).

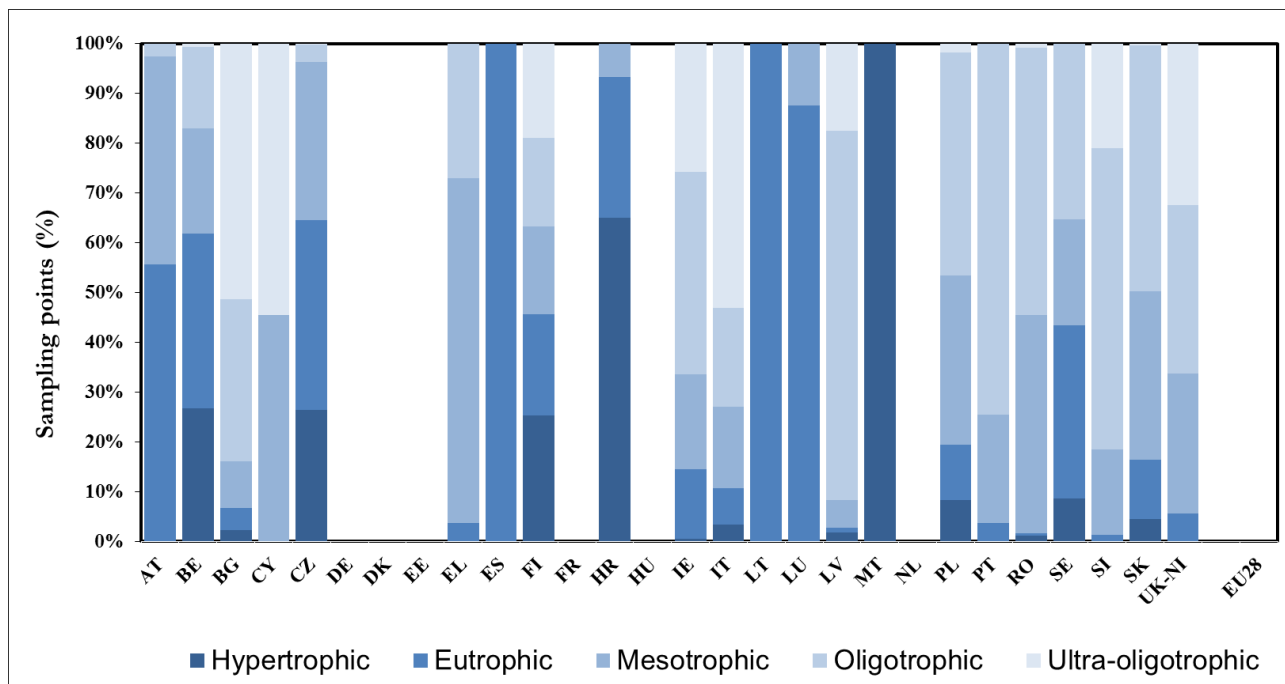


Figure 12. Frequency diagram of the trophic status of rivers in reporting period 2012-2015.

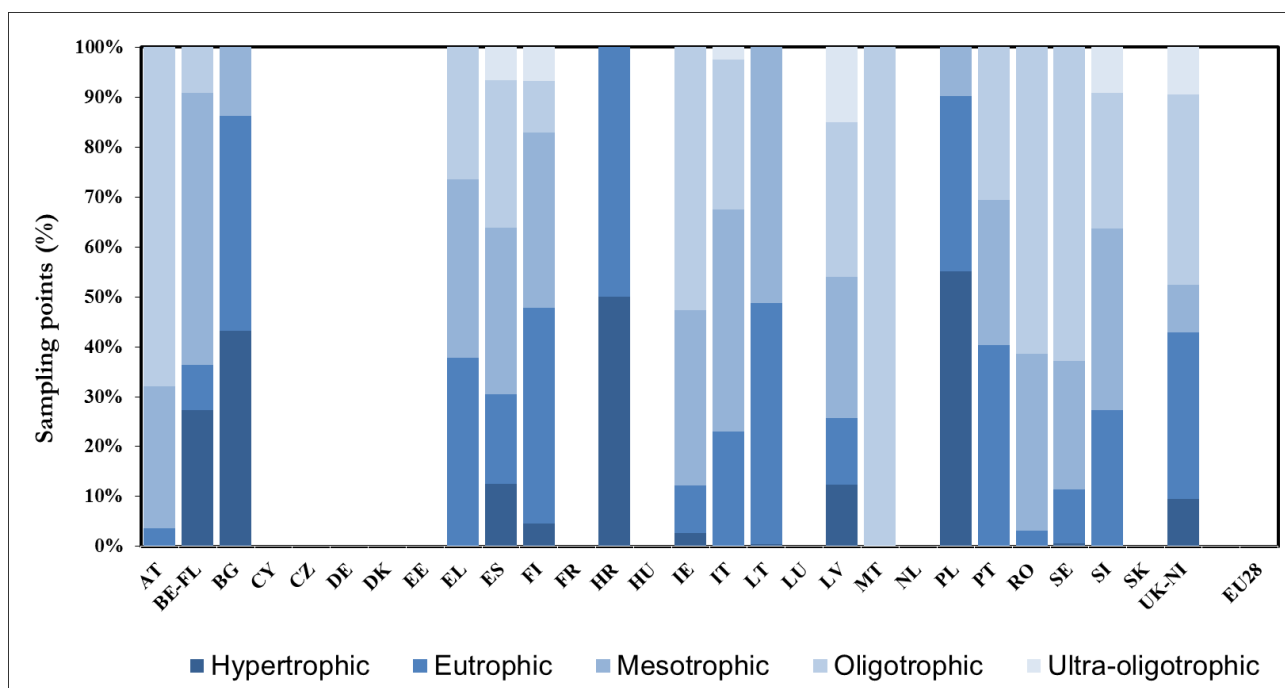
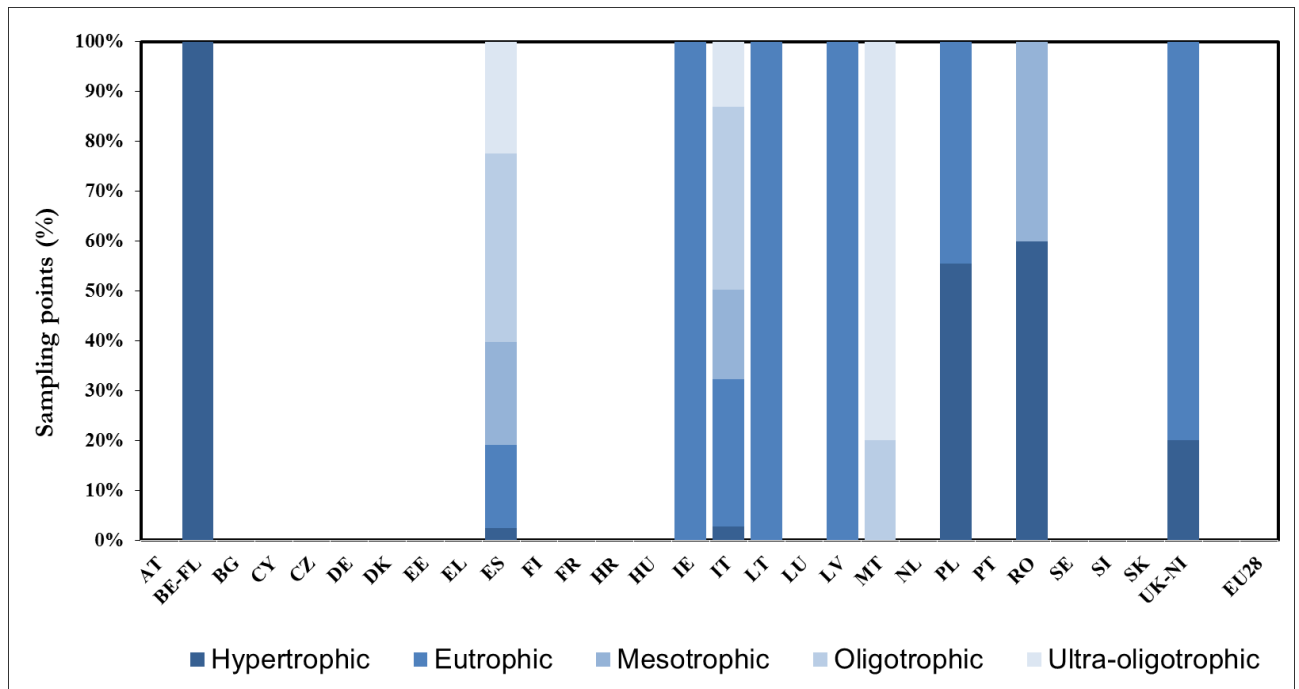


Figure 13. Frequency diagram of the trophic status of lakes in reporting period 2012-2015.



**Figure 14.** Frequency diagram of trophic status classes of transitional waters in reporting period 2012-2015.

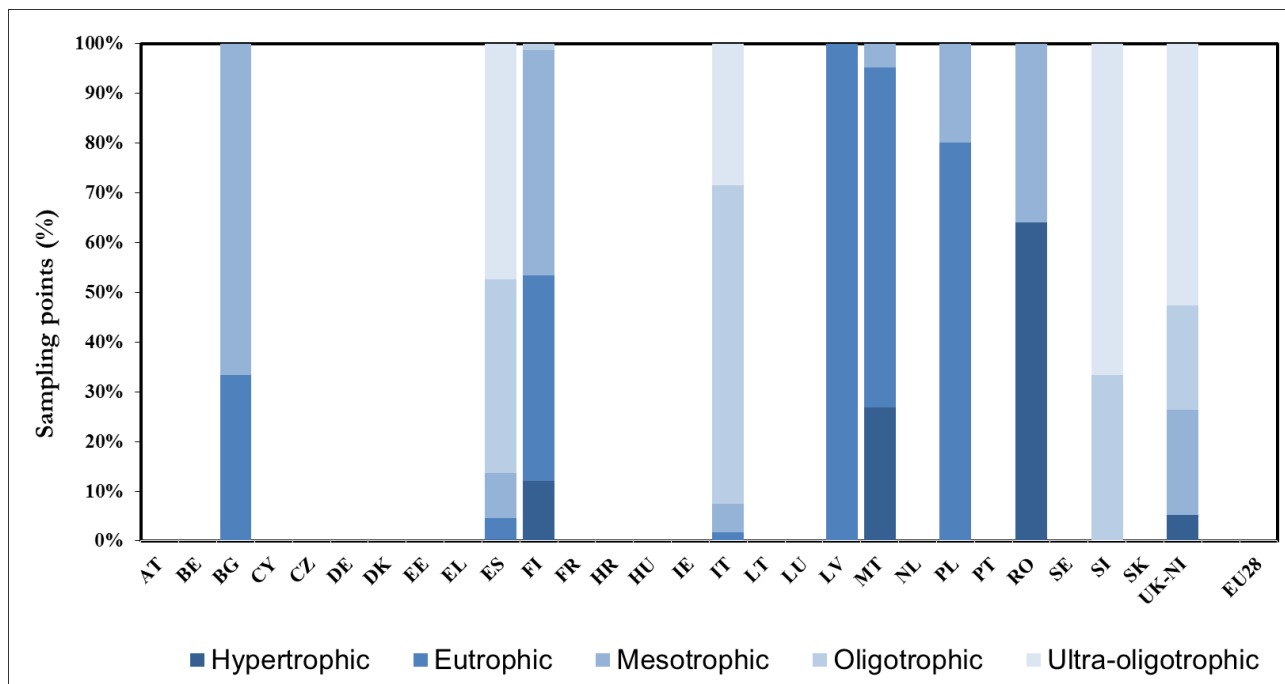


Figure 15. Frequency diagram of trophic status classes of coastal waters in reporting period 2012-2015.

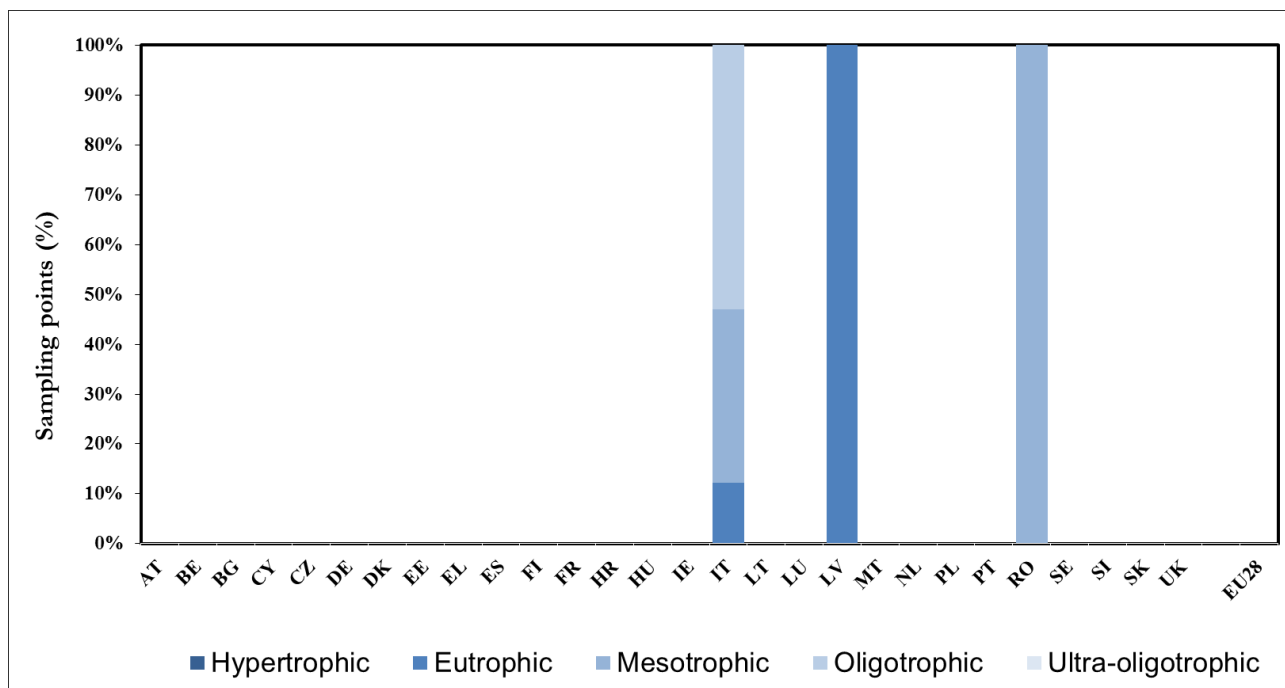
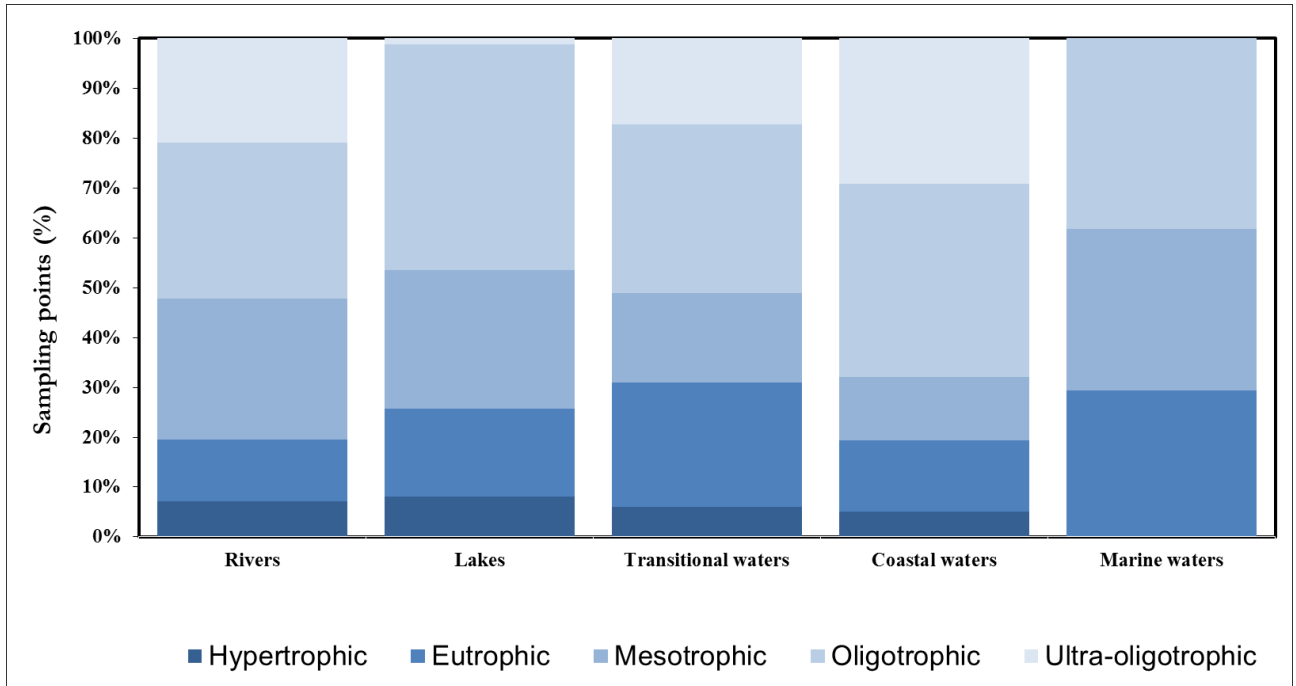


Figure 16. Frequency diagram of trophic status classes of marine waters in reporting period 2012-2015.



**Figure 17.** Frequency diagram of trophic status classes of different water types in reporting period 2012-2015. Note that the number of underlying Member States is different per water type (Annex 2).