



Brussels, 8.3.2018  
SWD(2018) 60 final

PART 6/6

**COMMISSION STAFF WORKING DOCUMENT**

**IMPACT ASSESSMENT**

*Accompanying the document*

**PROPOSAL FOR A REGULATION OF THE EUROPEAN PARLIAMENT AND OF  
THE COUNCIL**

**Establishing a multiannual plan for the fisheries exploiting demersal stocks in the  
western Mediterranean Sea**

{COM(2018) 115 final} - {SWD(2018) 59 final}

**ANNEX 9:**  
**IMPACTS OF THE DIFFERENT OPTIONS**

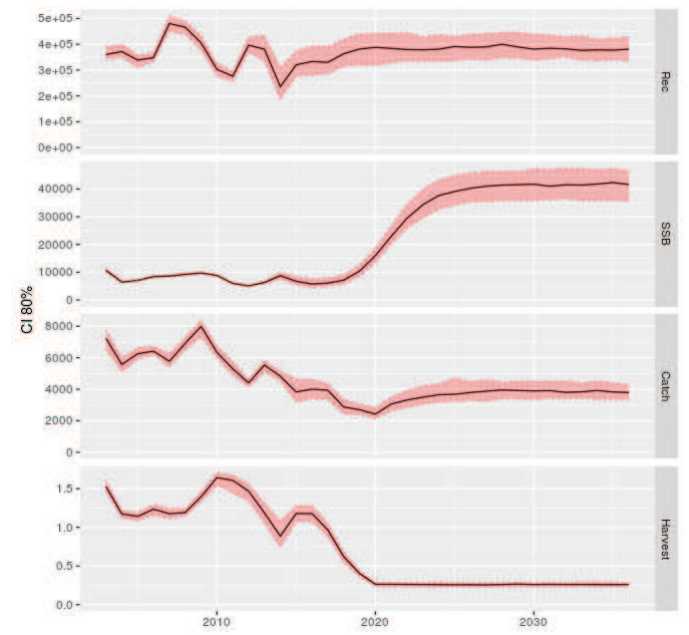
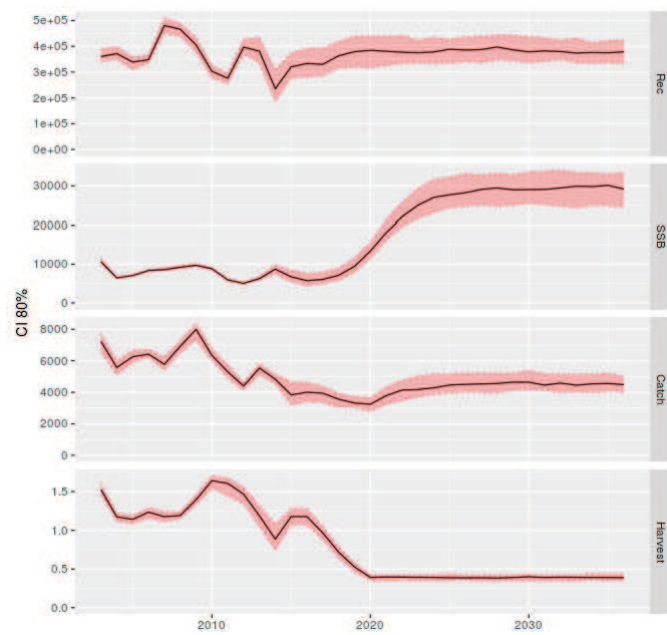
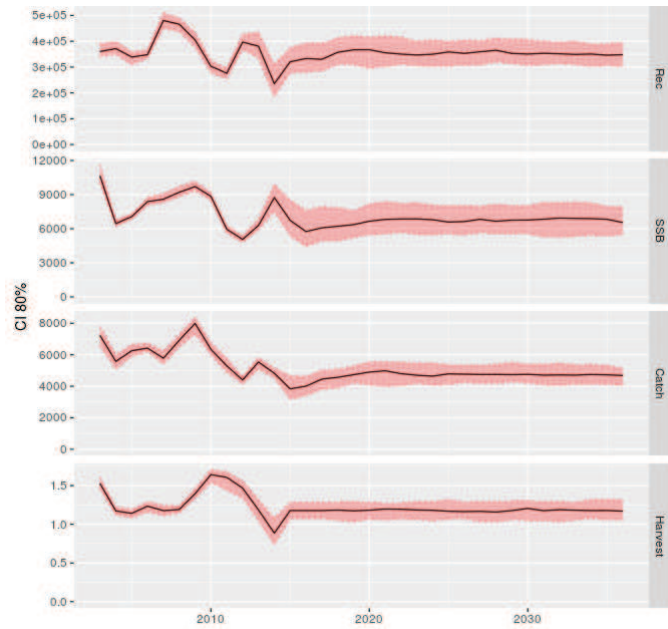
*This work was carried out by the Scientific, Technical and Economic Committee for Fisheries (STECF) in 2016. Ref: [STECF\(2016\)](#). Multiannual plan for demersal fisheries in the western Mediterranean (STECF 16-21). Publications Office of the European Union, Luxembourg; EUR 27758 EN, 128 pp.*

Hake in GSAs 1-5-6-7  
*Merluccius merluccius*

OPTION 1 (baseline)

OPTION 2 (amended framework)

OPTION 3 (multi-annual plan)

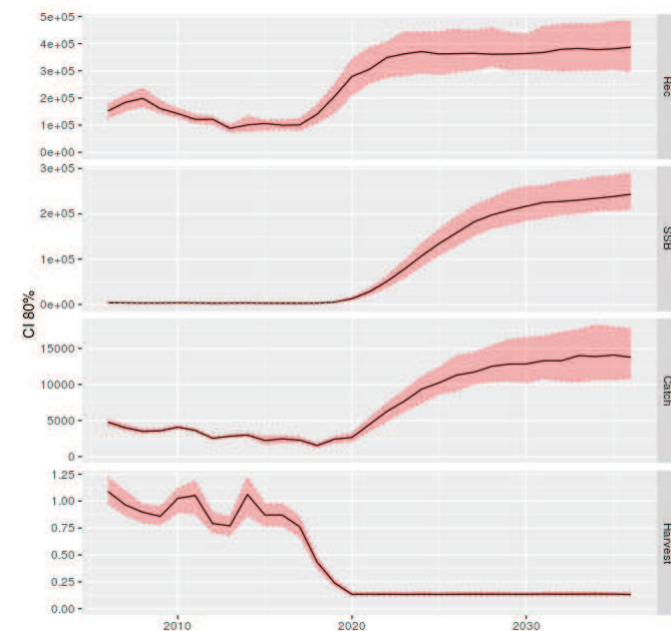
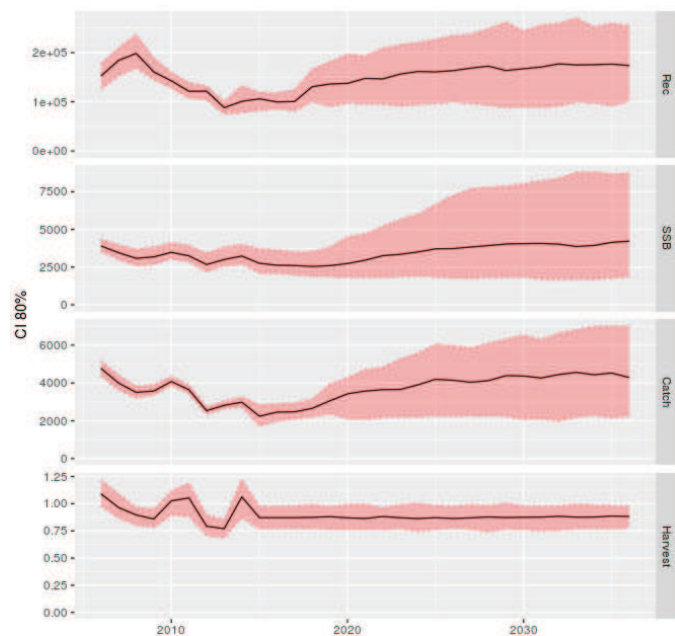


Hake in GSAs 9-10-11  
*Merluccius merluccius*

OPTION 1 (baseline)

OPTION 2 (amended framework)

OPTION 3 (multi-annual plan)

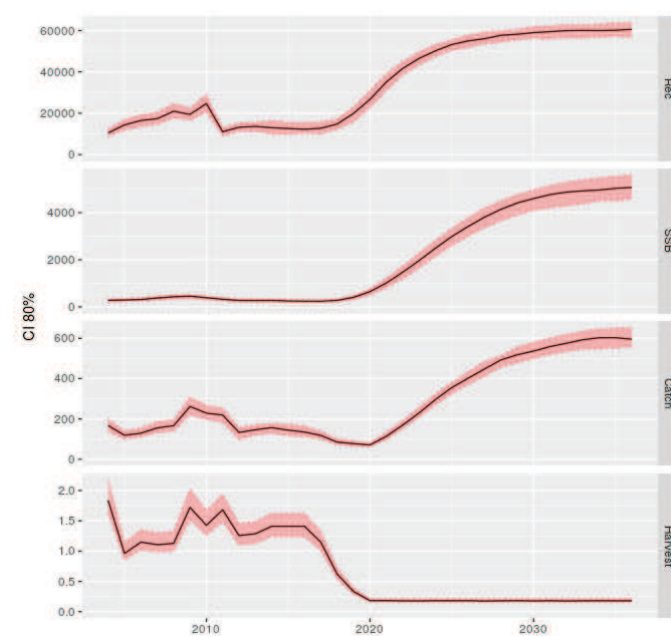
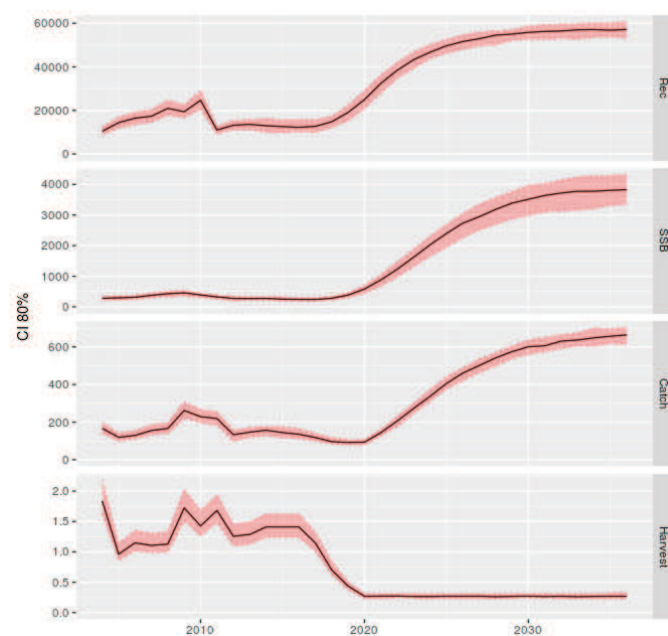
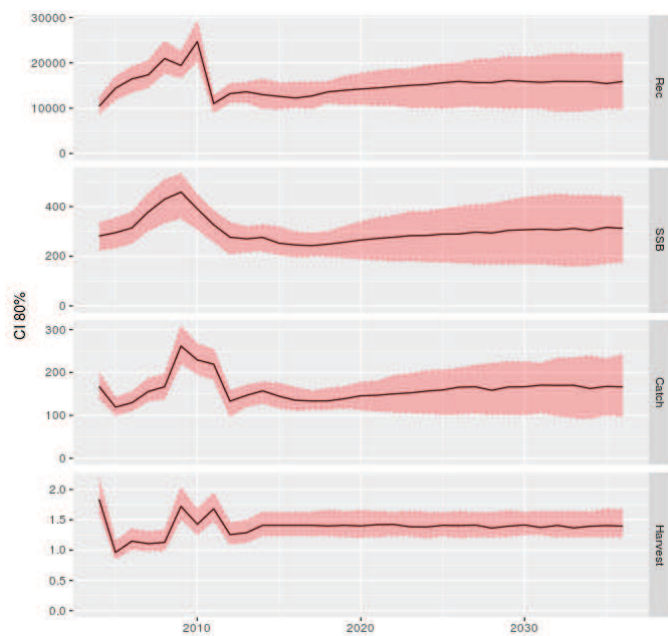


**Red mullets in GSA 1**  
*Mullus spp.*

**OPTION 1 (baseline)**

**OPTION 2 (amended framework)**

**OPTION 3 (multi-annual plan)**

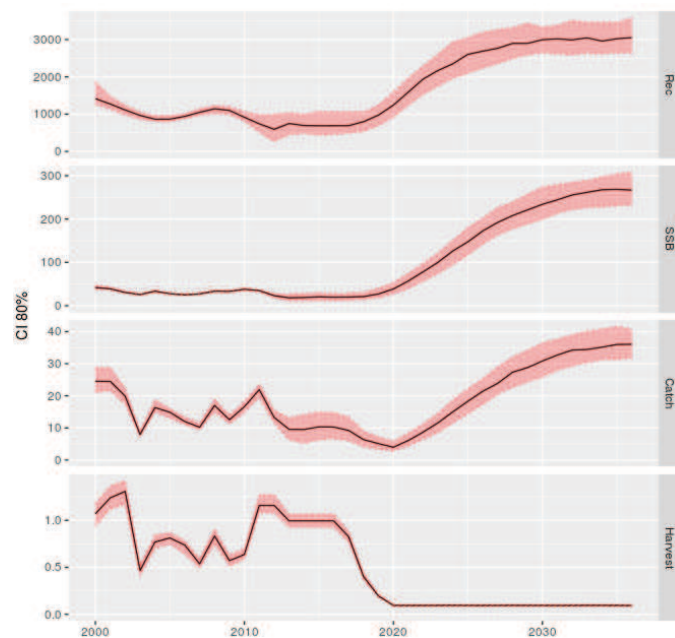
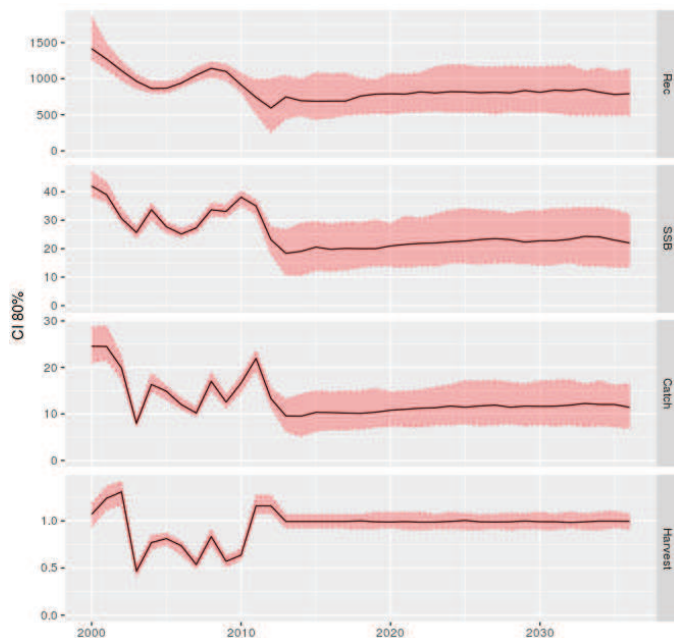
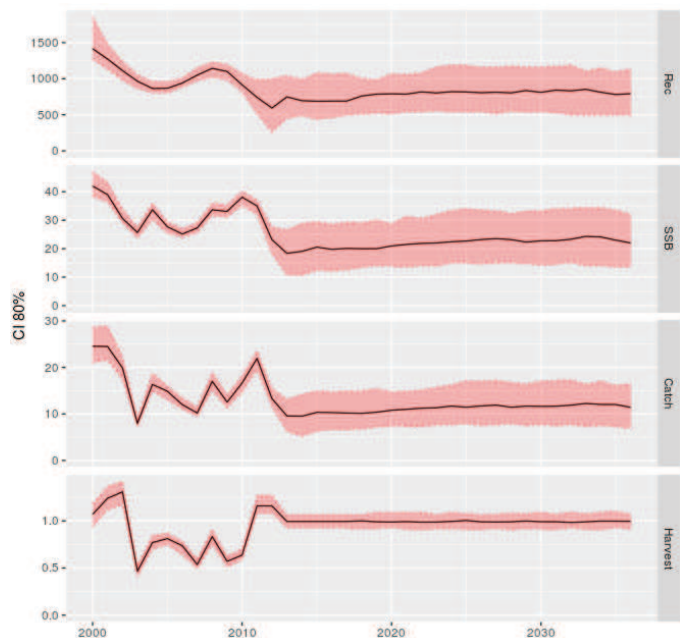


**Red mullets in GSA 5**  
*Mullus spp.*

**OPTION 1 (baseline)**

**OPTION 2 (amended framework)**

**OPTION 3 (multi-annual plan)**

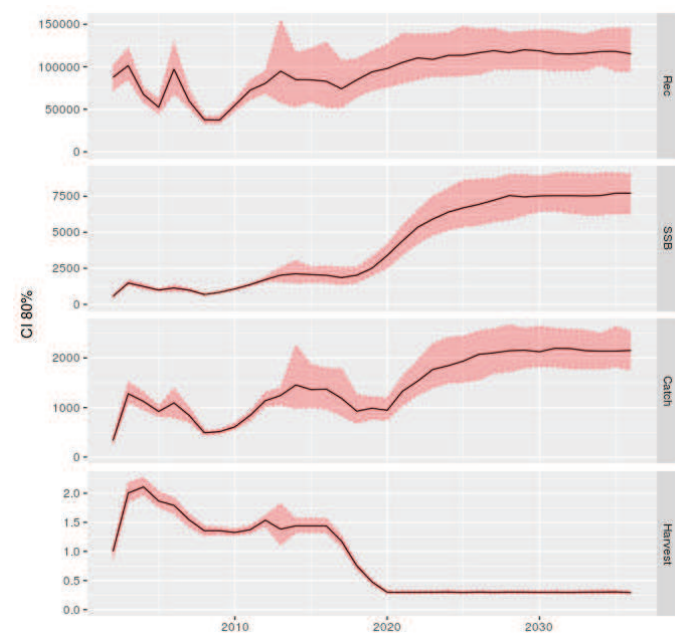
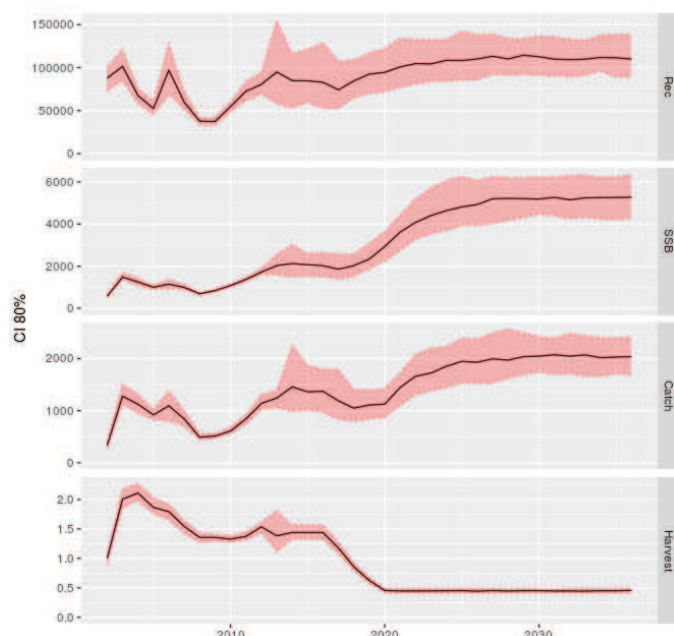
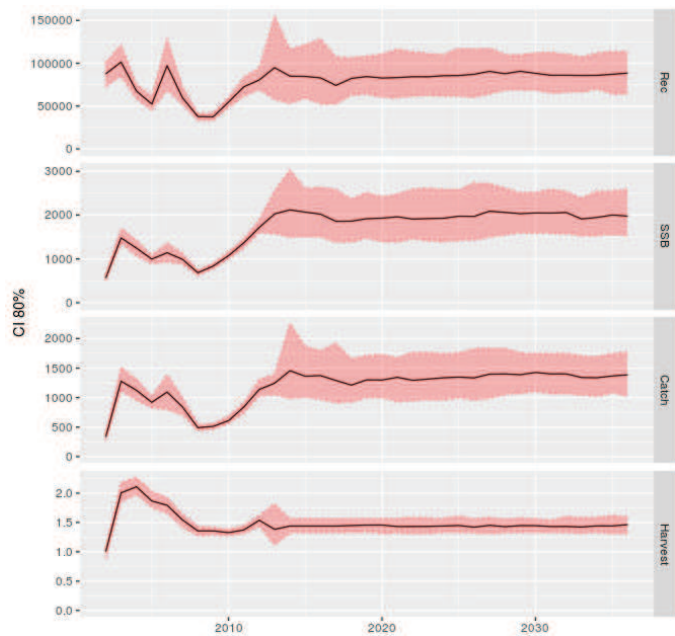


**Red mullets in GSA 6**  
*Mullus spp.*

**OPTION 2 (amended framework)**

**OPTION 2 (amended framework)**

**OPTION 2 (amended framework)**

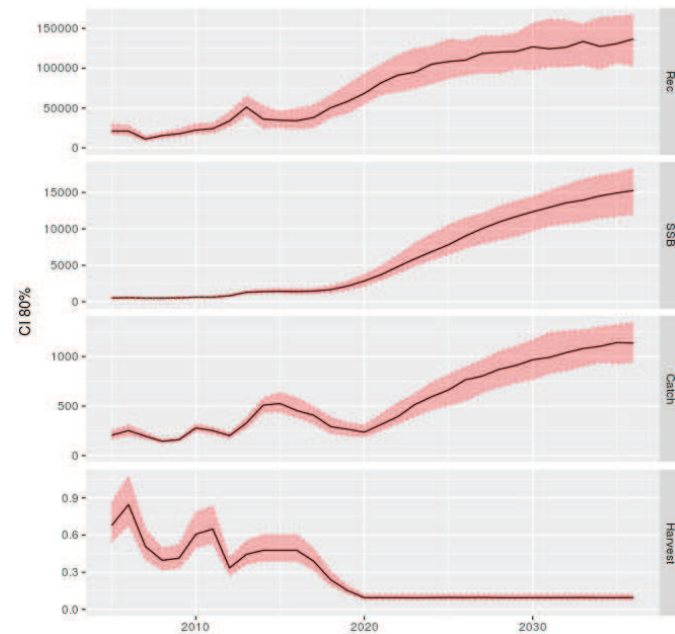
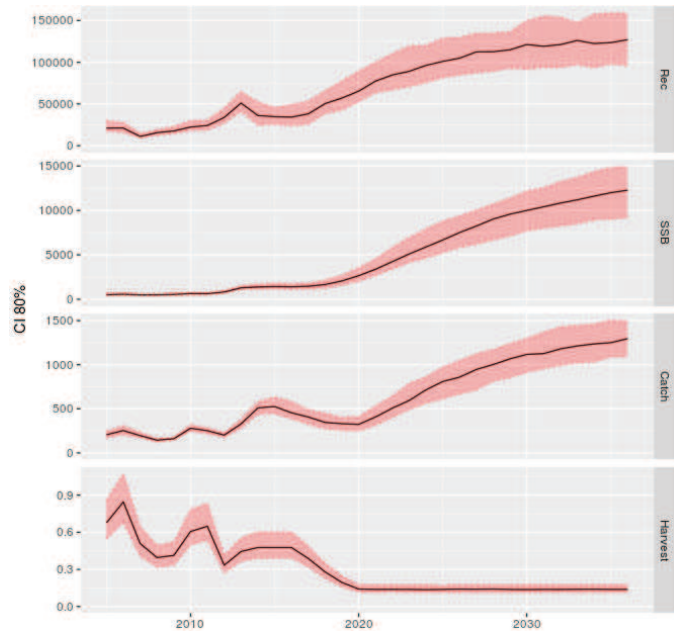
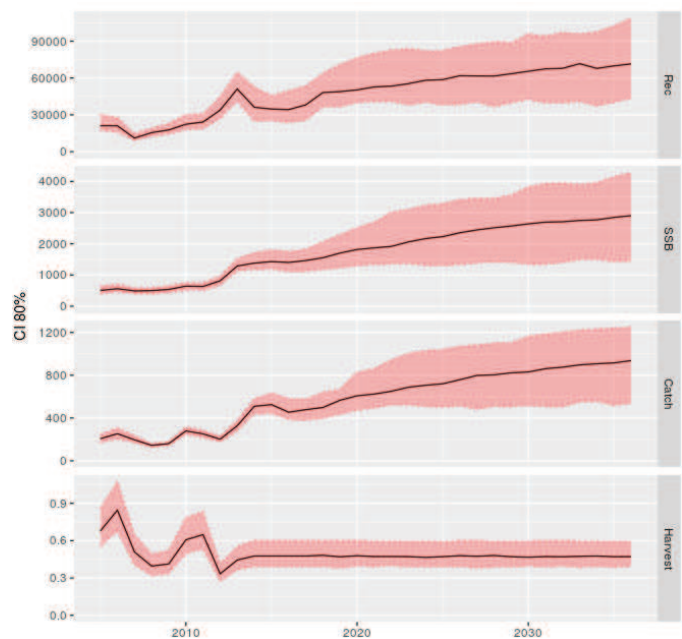


**Red mullets in GSA 7**  
*Mullus spp.*

**OPTION 1 (baseline)**

**OPTION 2 (amended framework)**

**OPTION 3 (multi-annual plan)**



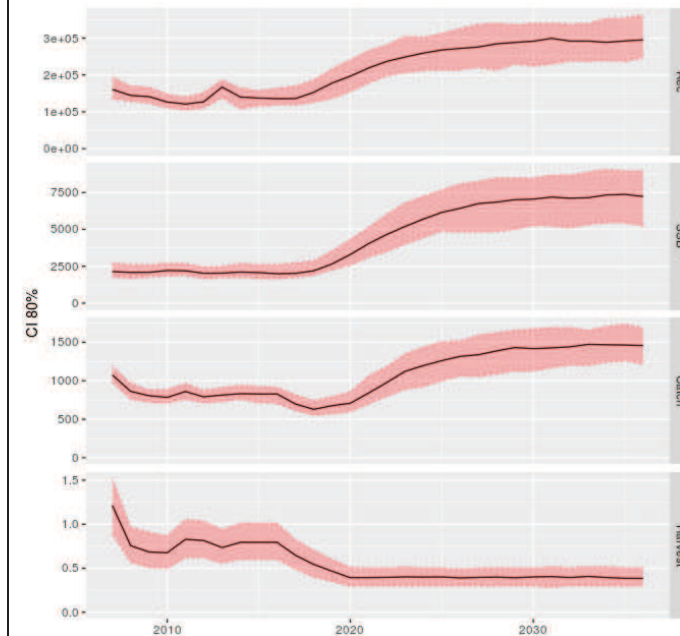
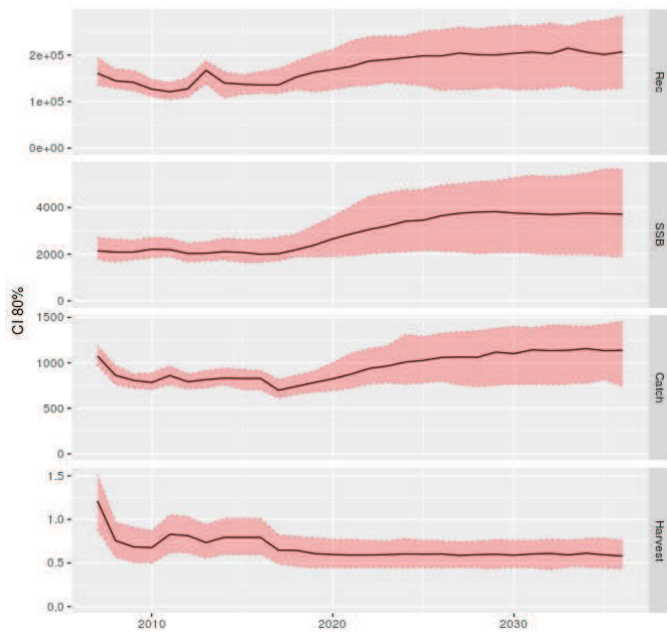
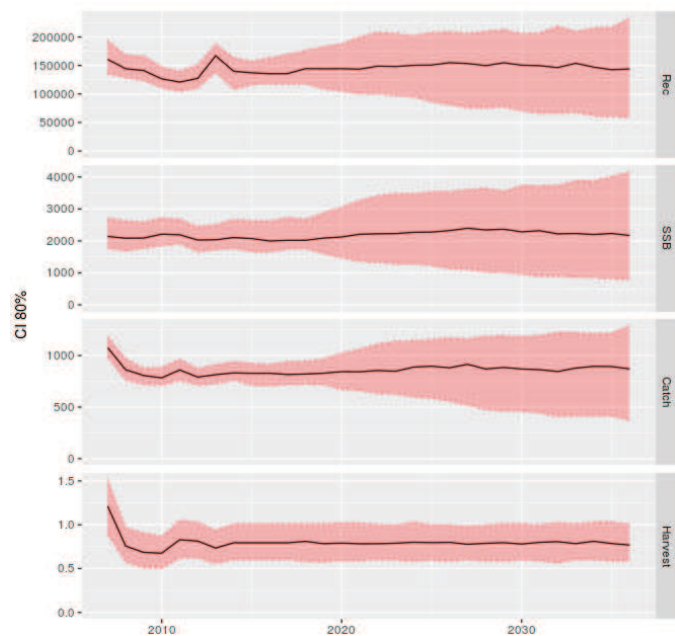


**Red mullets in GSA 9**  
*Mullus spp.*

**OPTION 1 (baseline)**

**OPTION 2 (amended framework)**

**OPTION 3 (multi-annual plan)**



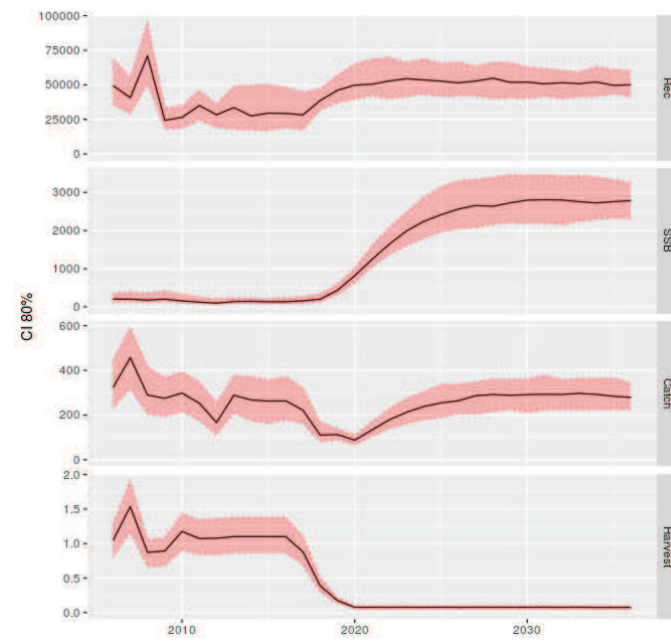
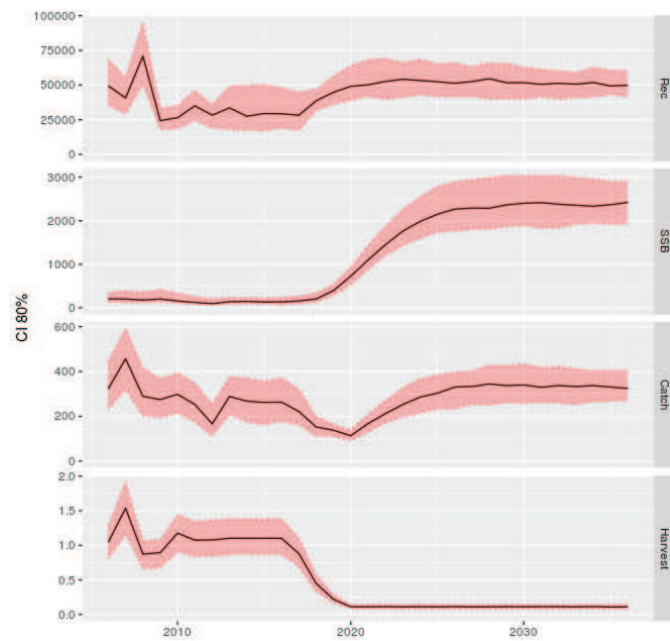
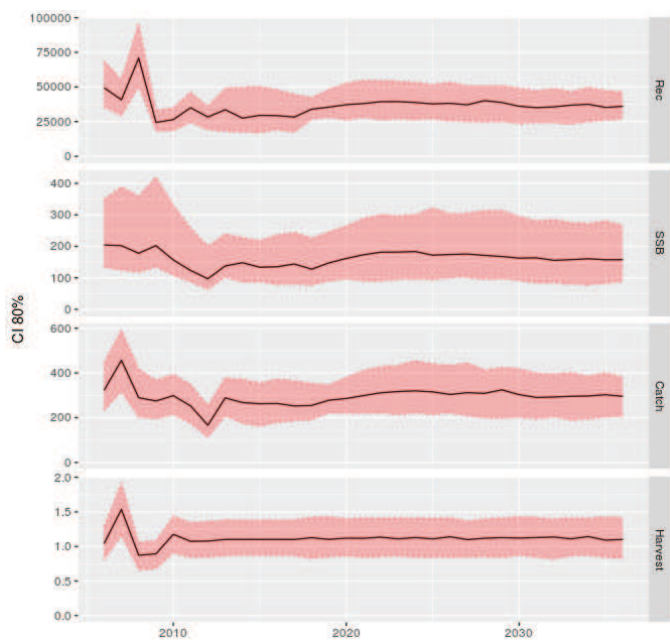
## Red mullets in GSA 11

*Mullus spp.*

### OPTION 1 (baseline)

### OPTION 2 (amended framework)

### OPTION 3 (multi-annual plan)

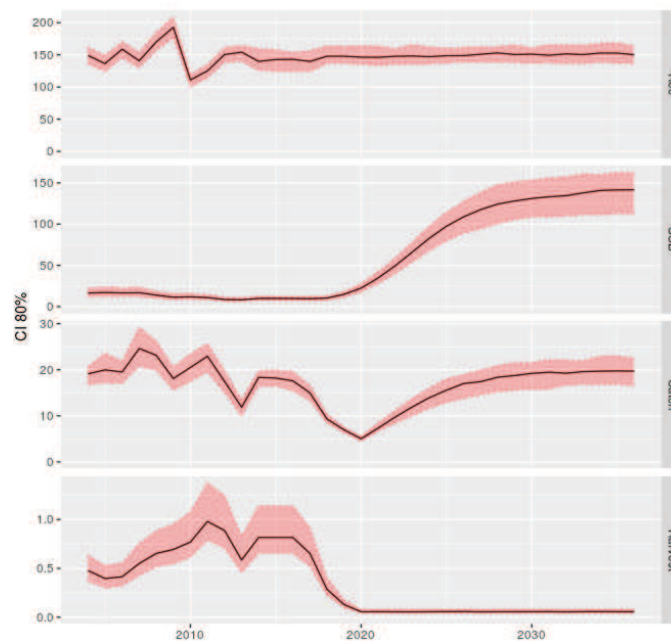
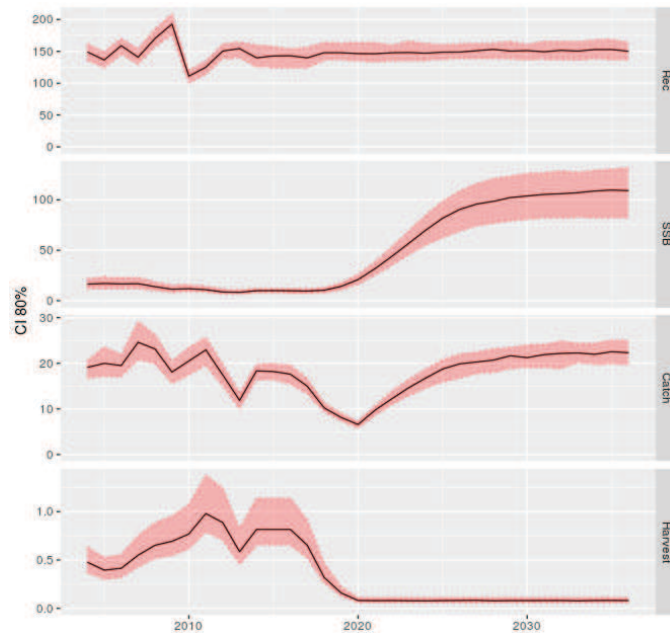
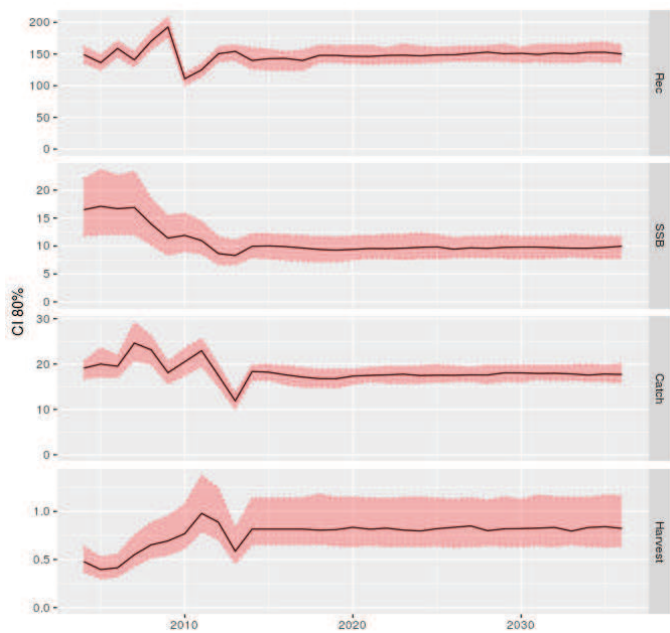


**Anglerfish in GSA 5**  
*Lophius spp.*

**OPTION 1 (baseline)**

**OPTION 2 (amended framework)**

**OPTION 3 (multi-annual plan)**

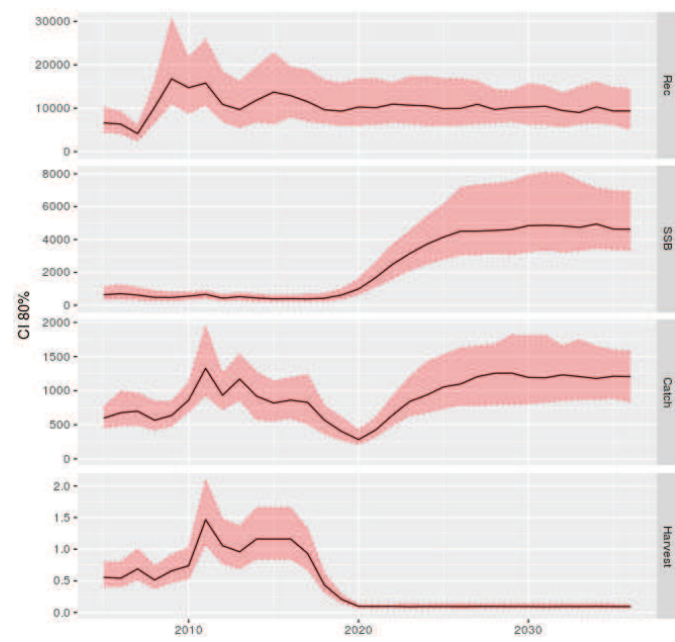
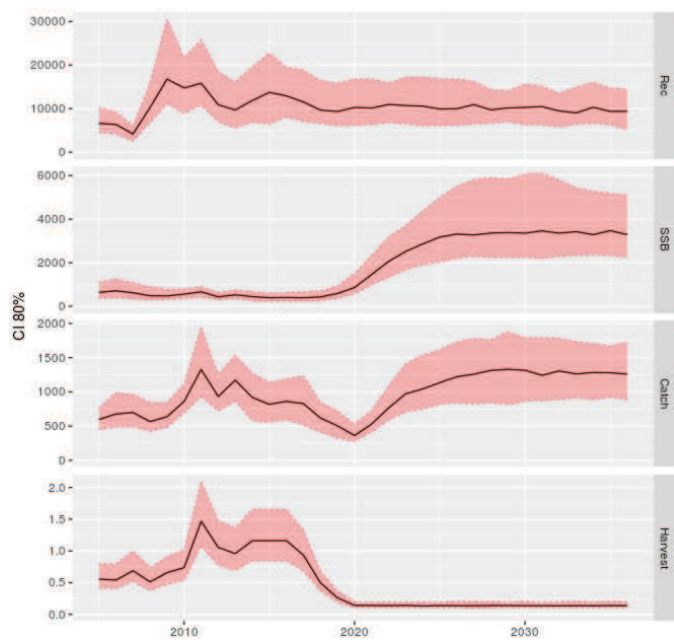
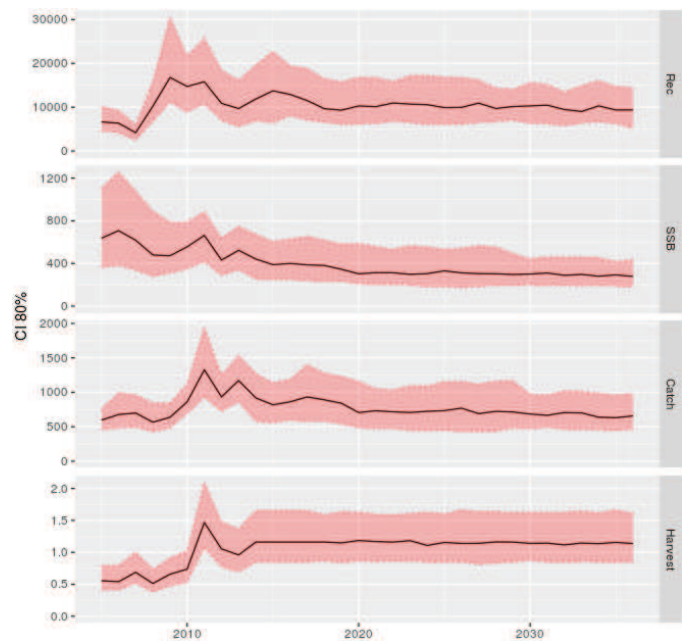


**Anglerfish in GSA 6**  
*Lophius spp.*

**OPTION 1 (baseline)**

**OPTION 2 (amended framework)**

**OPTION 3 (multi-annual plan)**

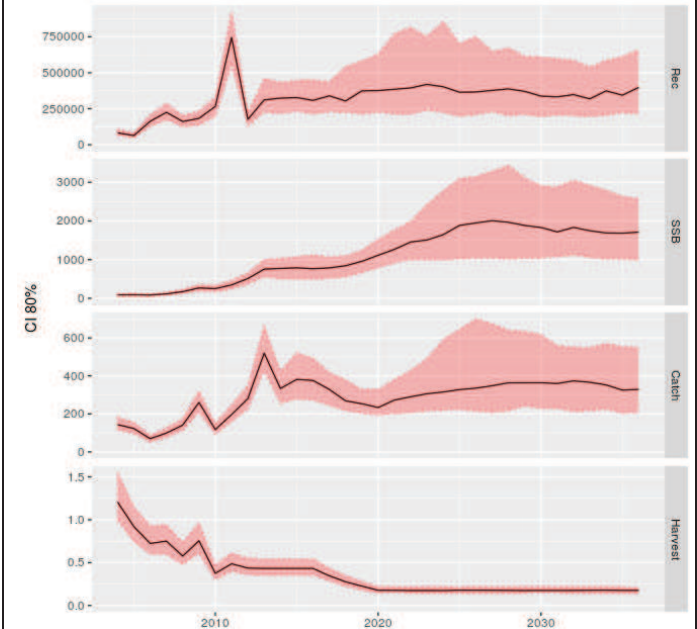


**Deep-water rose shrimp in GSA 1**  
*Parapenaeus longirostris*

**OPTION 1 (baseline)**

**OPTION 2 (amended framework)**

**OPTION 3 (multi-annual plan)**

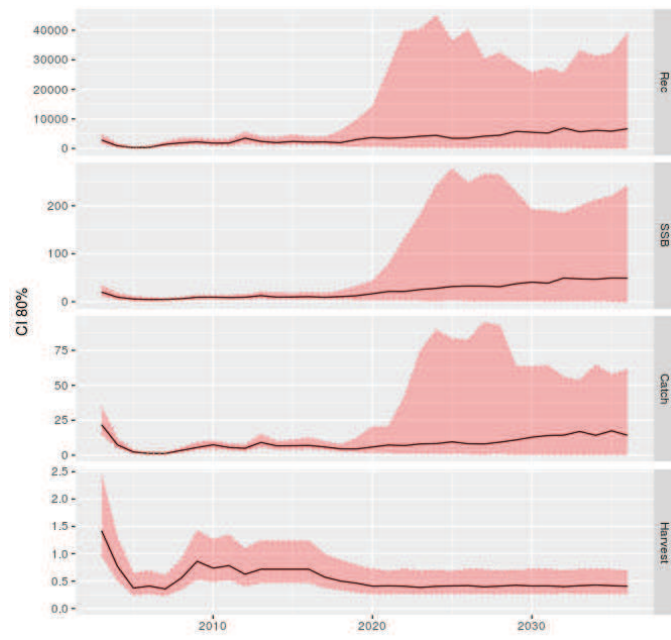
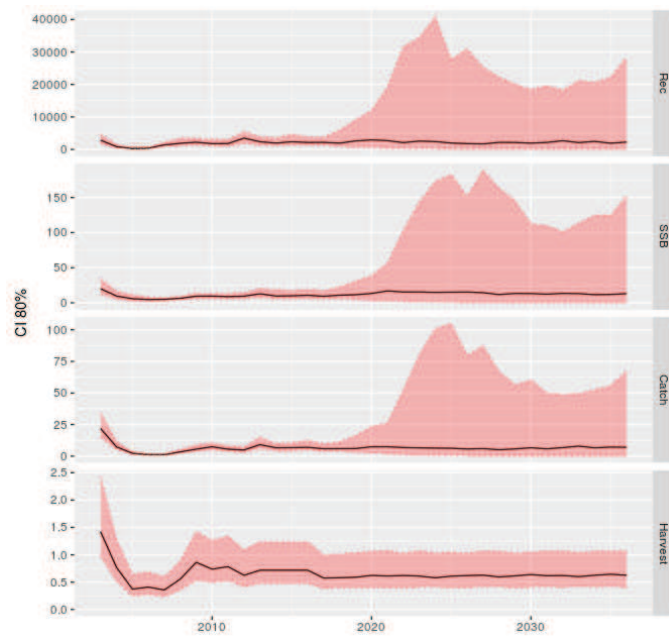
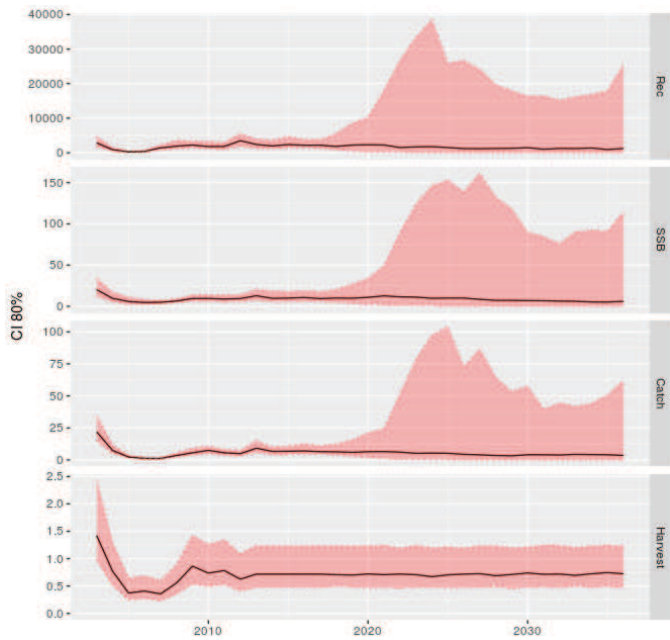


**Deep-water rose shrimp in GSA 5**  
*Parapenaeus longirostris*

**OPTION 1 (baseline)**

**OPTION 2 (amended framework)**

**OPTION 3 (multi-annual plan)**

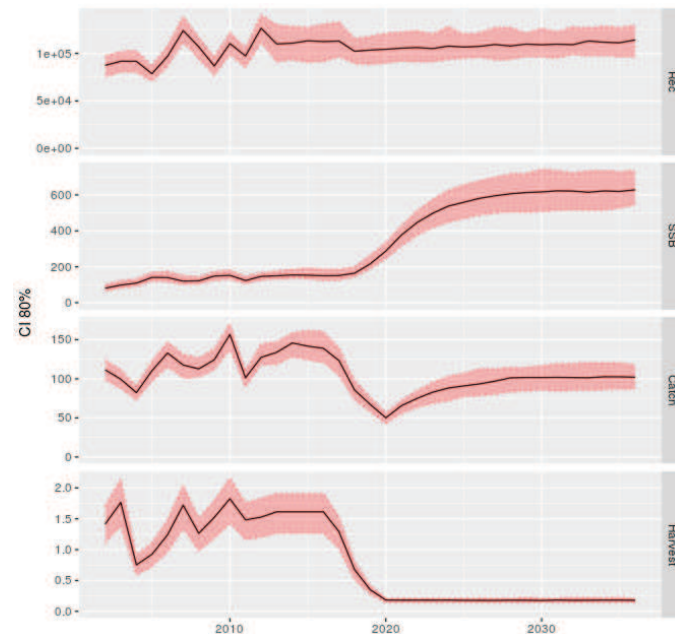
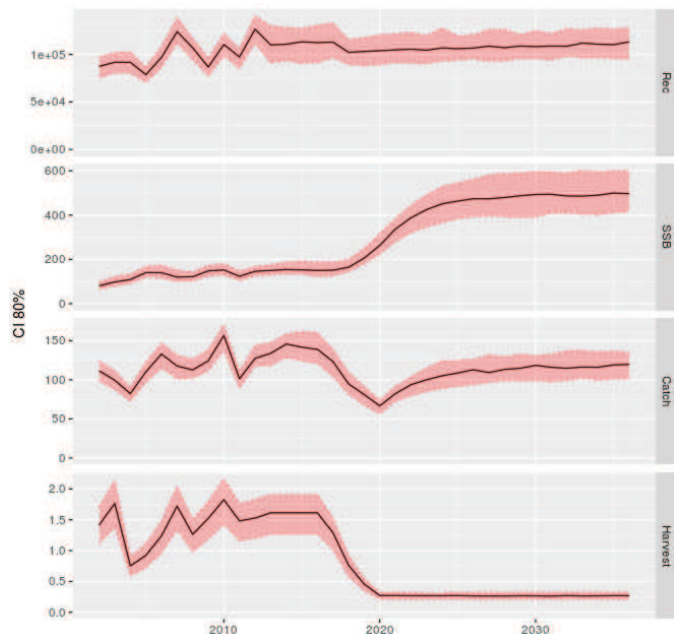
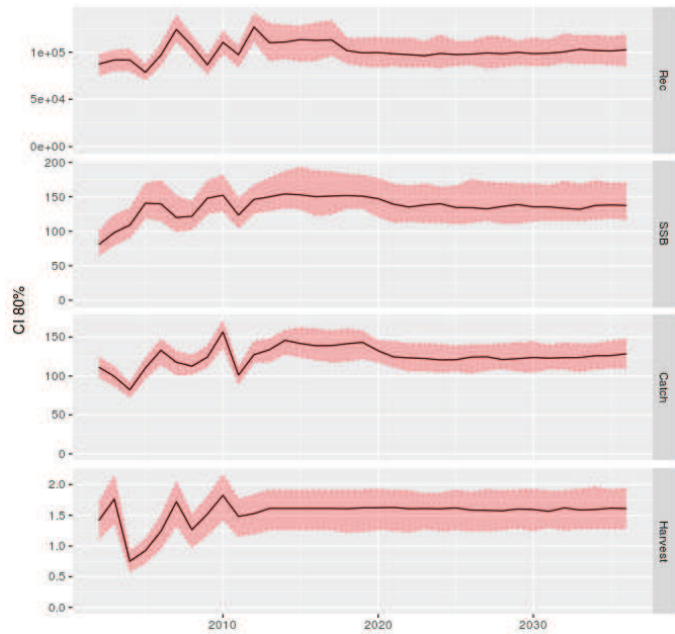


**Deep-water rose shrimp in GSA 6**  
*Parapenaeus longirostris*

**OPTION 1 (baseline)**

**OPTION 2 (amended framework)**

**OPTION 3 (multi-annual plan)**

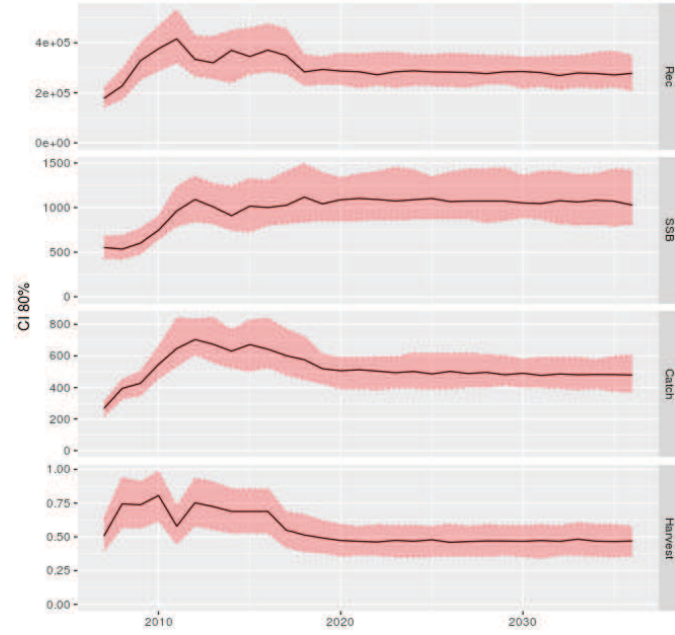
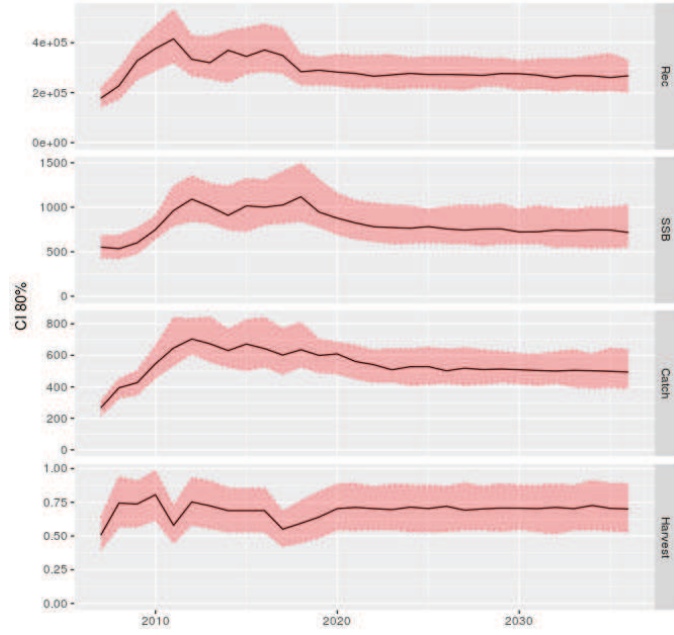
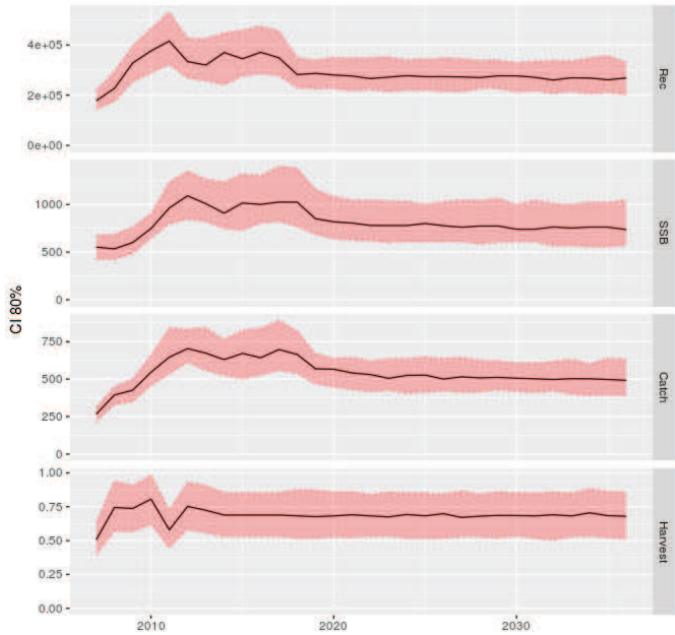


**Deep-water rose shrimp in GSA 9**  
*Parapenaeus longirostris*

**OPTION 1 (baseline)**

**OPTION 2 (amended framework)**

**OPTION 3 (multi-annual plan)**



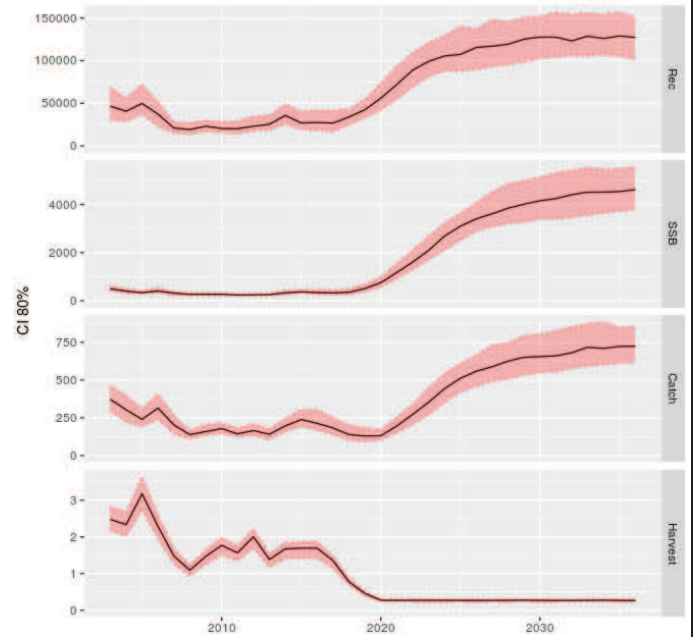
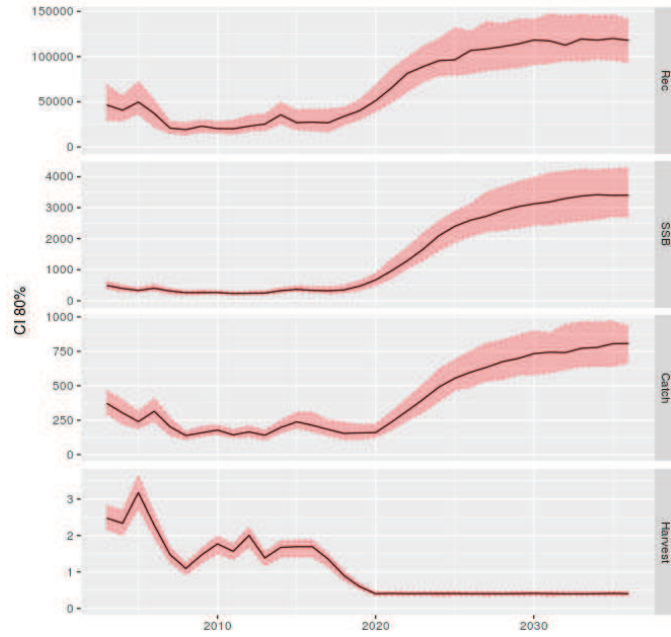
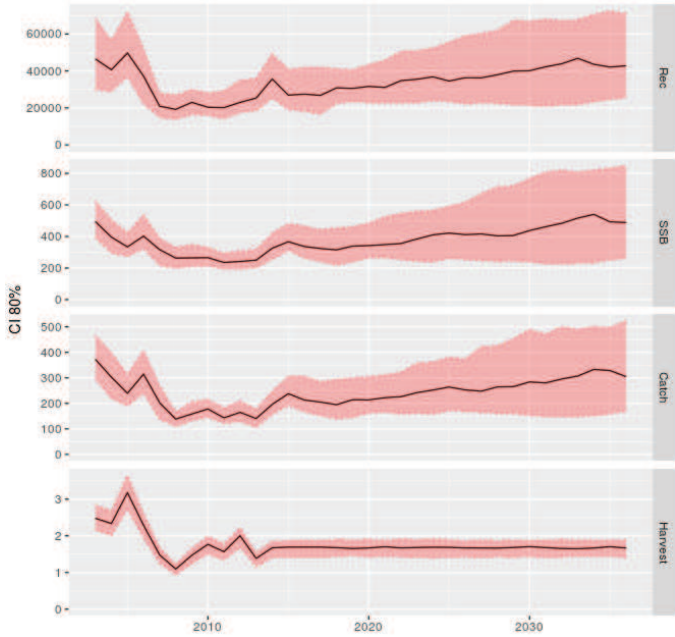


**Blue and red shrimp GSA 1**  
*Aristeus antennatus*

**OPTION 1 (baseline)**

**OPTION 2 (amended framework)**

**OPTION 3 (multi-annual plan)**

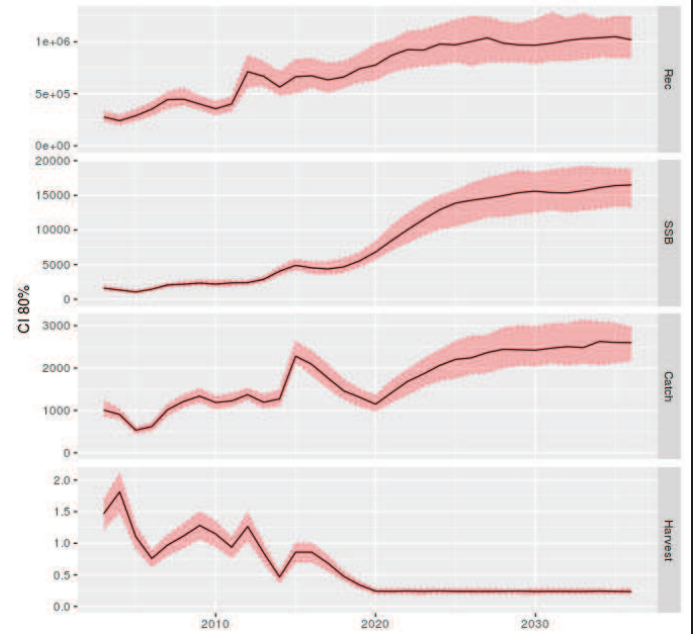
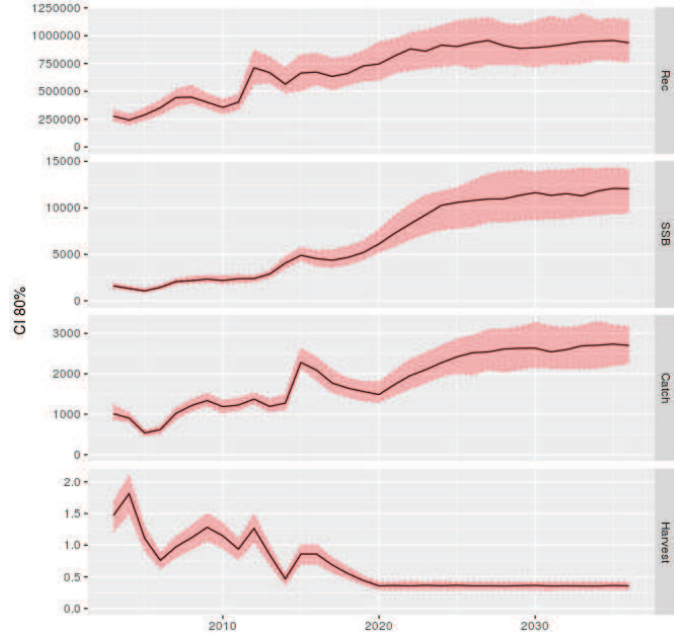
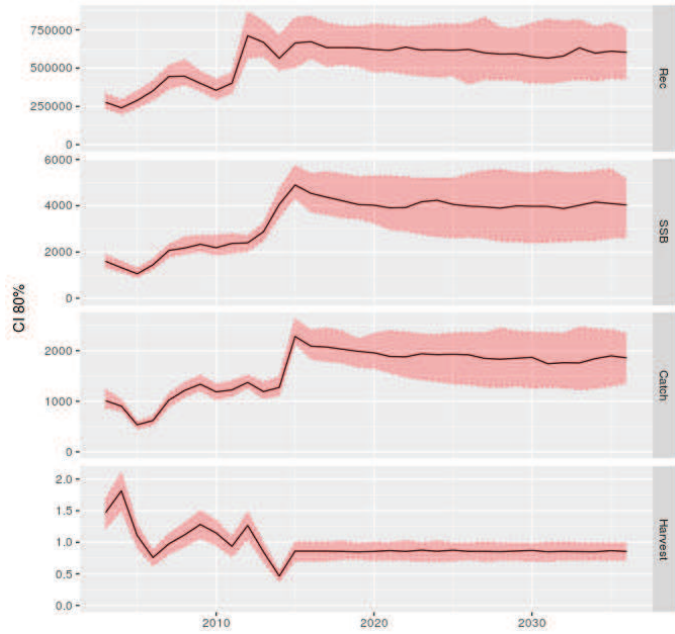


**Blue and red shrimp GSA 6**  
*Aristeus antennatus*

**OPTION 1 (baseline)**

**OPTION 2 (amended framework)**

**OPTION 3 (multi-annual plan)**

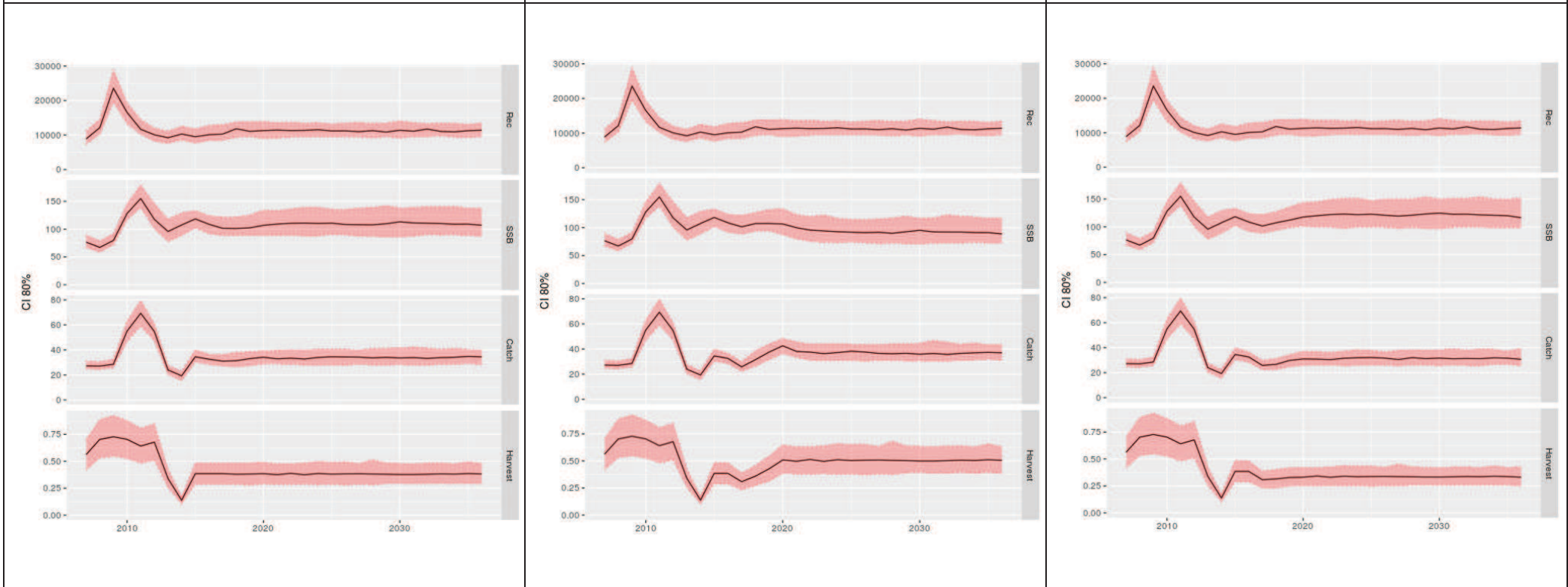


**Giant red shrimp GSA 9**  
*Aristaeomorpha foliacea*

**OPTION 1 (baseline)**

**OPTION 2 (amended framework)**

**OPTION 3 (multi-annual plan)**

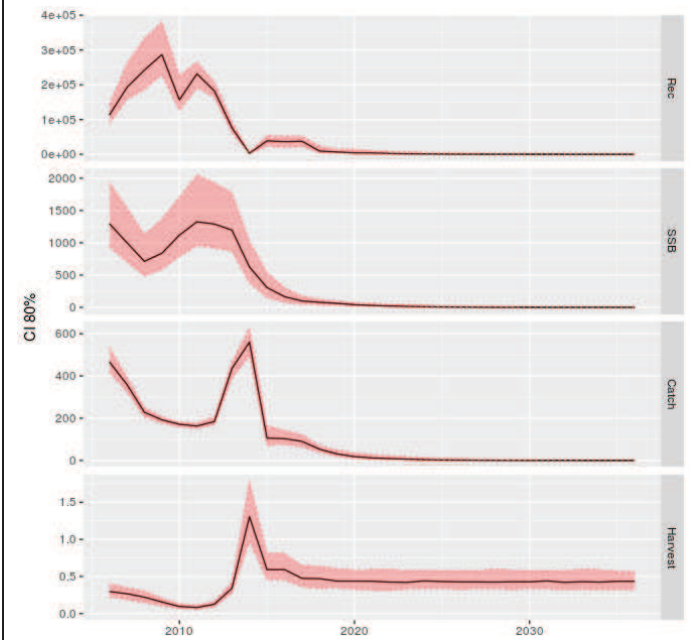
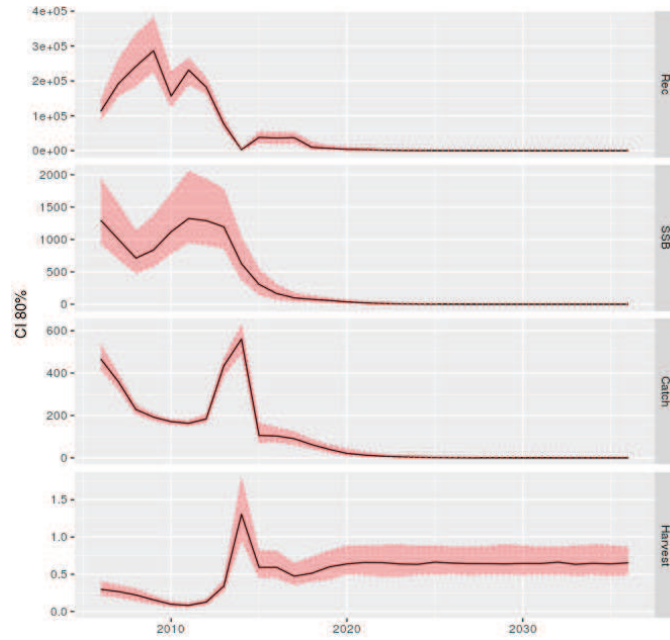
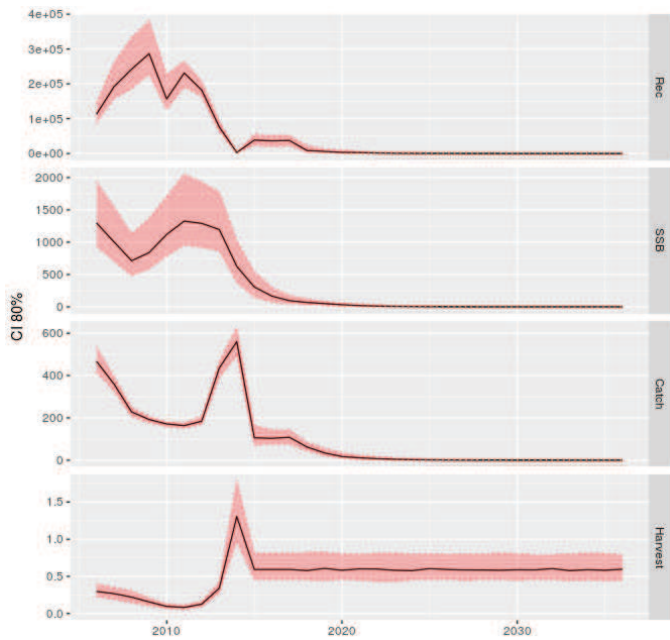


**Giant red shrimp GSA 10**  
*Aristaeomorpha foliacea*

**OPTION 1 (baseline)**

**OPTION 2 (amended framework)**

**OPTION 3 (multi-annual plan)**



**Giant red shrimp GSA 11**  
*Aristaeomorpha foliacea*

**OPTION 1 (baseline)**

**OPTION 2 (amended framework)**

**OPTION 3 (multi-annual plan)**

