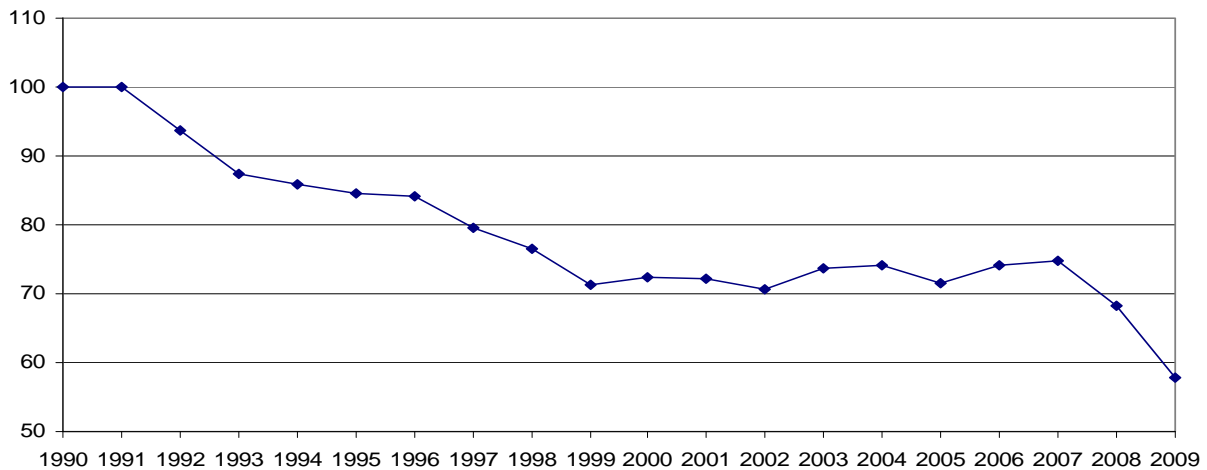


COAL 2008-2009

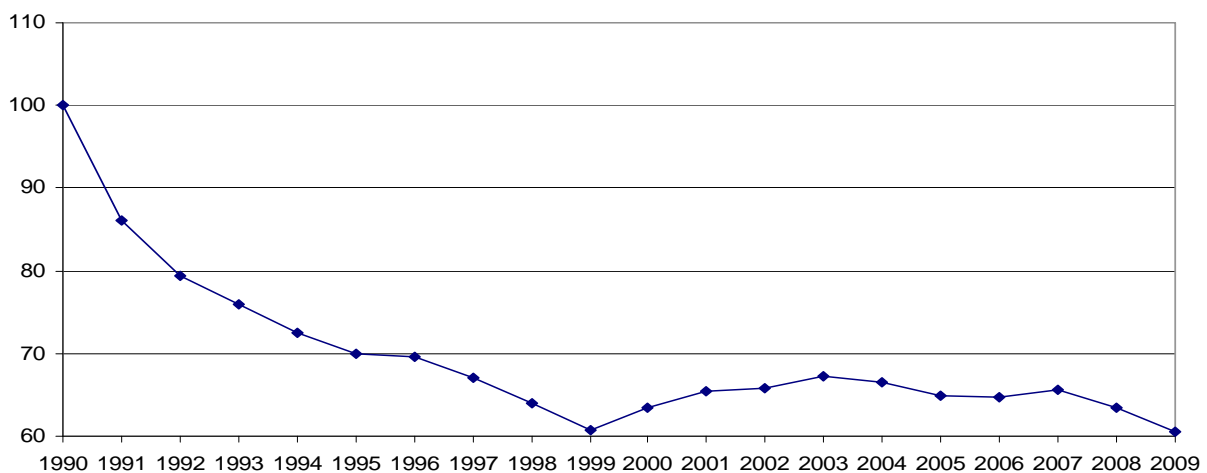
Consumption of hard coal falls

EU-27: Gross inland consumption of hard coal 1990-2009 (1990 = 100)



Source: Eurostat ([nrg_101a](#), [nrg_101m](#))

EU-27: Gross inland consumption of lignite 1990-2009 (1990 = 100)



Source: Eurostat ([nrg_101a](#), [nrg_101m](#))

Hard coal (1000 tonnes)

	Primary production*			Total imports			Total exports			Gross inland consumption		
	2008	2009	09/08	2008	2009	09/08	2008	2009	09/08	2008	2009	09/08
EU-27	144602	131745p	-8.9%	234680	197525p,s	-15.8%	24136	21661p	-10.3%	345747	291576p,s	-15.7%
EU-25	144569	131706p	-8.9%	226324	193694p,s	-14.4%	24136	21661p	-10.3%	338092	287478p,s	-15.0%
BE	1	-		7436	4266p	-42.6%	1216	728p	-40.1%	5717	3390p	-40.7%
BG	33	39	18.2%	5309	2838	-46.5%	-	-		4664	3069	-34.2%
CZ	12829	11143	-13.1%	2191	1730	-21.0%	5941	5971	0.5%	8702	7091	-18.5%
DK	-	-		7619	6714	-11.9%	158	64	-59.5%	6829	6838	0.1%
DE	19143	14972	-21.8%	42455	36507	-14.0%	143	296	107.0%	62404	51572	-17.4%
EE	-	-		75	29	-61.3%	-	-		75	29	-61.3%
IE	-	-		2502	2252s	-10.0%	-	-		2236	2012s	-10.0%
EL	-	-		605	81	-86.6%	16	-		711	206s	-71.0%
ES	10035	9525	-5.1%	20966	16734	-20.2%	1843	1370	-25.7%	26041	21490	-17.5%
FR	188	147	-21.8%	21286	15836	-25.6%	185	92	-50.3%	19023	16756	-11.9%
IT	-	-		25118	19313	-23.1%	-	-		25800	18997	-26.4%
CY	-	-		41	26	-36.6%	-	-		42	21	-50.0%
LV	-	-		166	127	-23.5%	-	-		160	134	-16.3%
LT	-	-		383	216	-43.6%	-	-		334	240	-28.1%
LU	-	-		108	99	-8.3%	-	-		108	99	-8.3%
HU	-	-		1946	1304	-33.0%	-	-		1893	1265	-33.2%
MT	-	-		-	-		-	-		-	-	
NL	-	-		19078	19905	4.3%	6487	4730	-27.1%	12791	11867	-7.2%
AT	-	-		3092	3003p	-2.9%	-	-		3324	2995p	-9.9%
PL	84320	78043	-7.4%	10320	10082	-2.3%	7542	7902	4.8%	87276	77296	-11.4%
PT	-	-		3834	5061	32.0%	-	-		4200	4746	13.0%
RO	-	-		3047	993	-67.4%	-	-		2991	1029	-65.6%
SI	-	-		-	-		-	-		-	-	
SK	-	-		4855	4359	-10.2%	-	-		4799	4327	-9.8%
FI	-	-		5517	5978	8.4%	-	-		4857	5442	12.0%
SE	-	-		2855	1849	-35.2%	5	-		2837	1843	-35.0%
UK	18053	17876	-1.0%	43876	38223	-12.9%	600	508	-15.3%	57933	48822	-15.7%
HR	-	-		1194	713	-40.3%	-	-		1126	803	-28.7%
NO	3281	2639	-19.6%	663	413	-37.7%	3327	2359	-29.1%	718	714s	0.6%

Source: Eurostat ([nrg_101m](#))

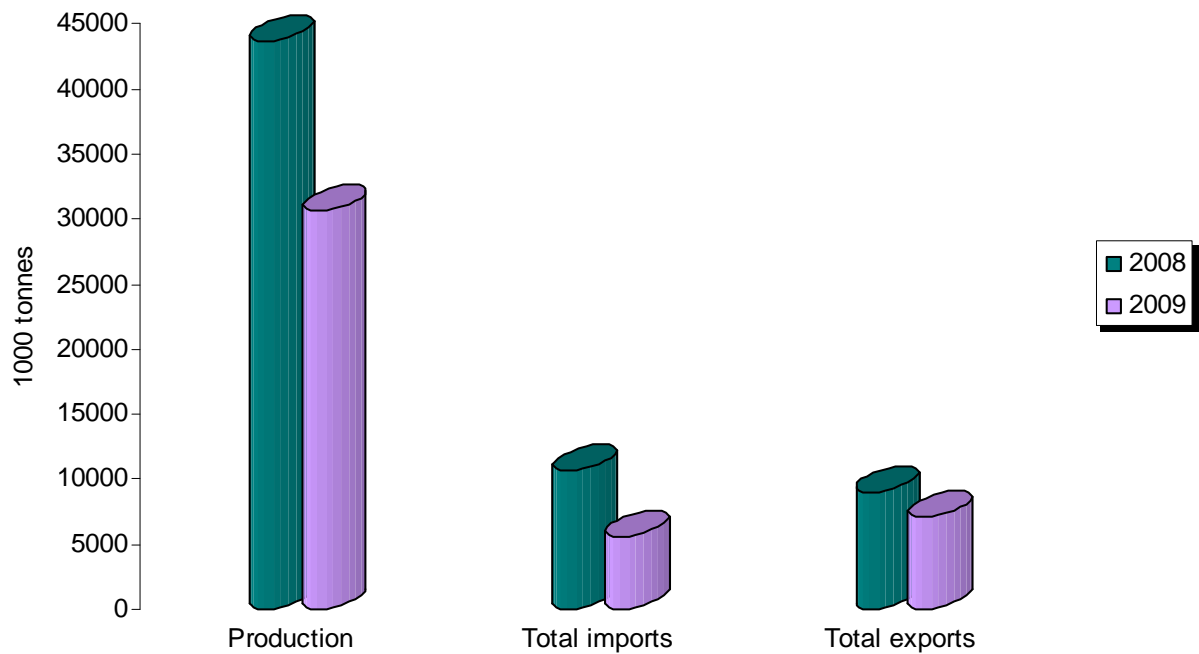
*Including hard coal recovered

Coke-oven coke (1000 tonnes)

	Production			Total imports			Total exports		
	2008	2009	09/08	2008	2009	09/08	2008	2009	09/08
EU-27	43653	30604p	-29.9%	10648	5593p	-47.5%	8987	7101p	-21.0%
EU-25	42236	30284p	-28.3%	9659	5086p	-47.3%	8987	7101p	-21.0%
BE	2309	1457p	-36.9%	862	460p	-46.6%	105	54p	-48.6%
BG	337	-		90	40	-55.6%	-	-	
CZ	3399	2269	-33.2%	491	506	3.1%	769	528	-31.3%
DK	-	-		38	20	-47.4%	-	-	
DE	2045	1524	-25.5%	3155	1636	-48.1%	-	-	
EE	-	-		-	-		-	-	
IE	-	-		-	-		-	-	
EL	-	-		-	-		-	-	
ES	2658	1471	-44.7%	201	118	-41.3%	621	199	-68.0%
FR	4857	3198	-34.2%	1310	646	-50.7%	993	618	-37.8%
IT	4515	2752	-39.0%	46	-		239	275	15.1%
CY	-	-		-	-		-	-	
LV	-	-		3	5	66.7%	-	-	
LT	-	-		14	11	-21.4%	-	-	
LU	-	-		-	-		-	-	
HU	999	746	-25.3%	16	3	-81.3%	251	154	-38.6%
MT	-	-		-	-		-	-	
NL	2108	1683	-20.2%	222	67	-69.8%	367	76	-79.3%
AT	1385	1245p	-10.1%	1240	735p	-40.7%	-	-	
PL	9829	6947	-29.3%	84	44	-47.6%	5213	4658	-10.6%
PT	-	-		-	-		-	-	
RO	1080	320	-70.4%	899	467	-48.1%	-	-	
SI	-	-		-	-		-	-	
SK	1737	1573	-9.4%	416	269	-35.3%	227	169	-25.6%
FI	860	740	-14.0%	519	245	-52.8%	-	-	
SE	1177	986	-16.2%	319	144	-54.9%	16	224	
UK	4358	3693	-15.3%	723	177	-75.5%	186	146	-21.5%
HR	-	-		23	23	0.0%	-	-	
NO	-	-		432	279	-35.4%	-	-	

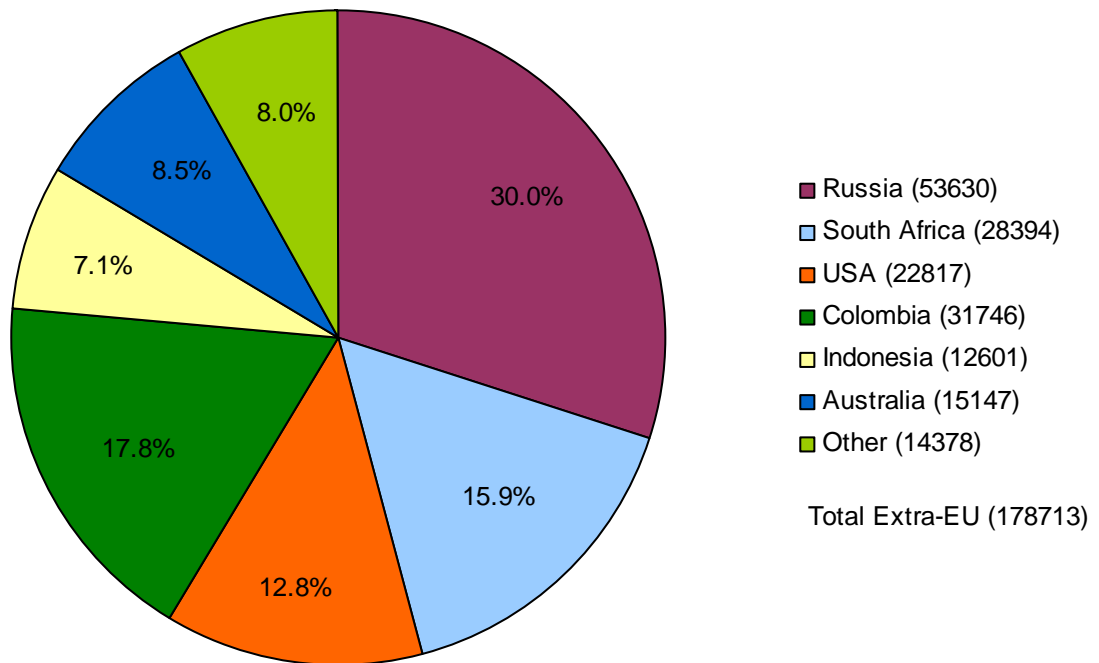
Source: Eurostat ([nrg_101m](#))

EU-27 Coke-oven coke supply



Source: Eurostat ([nrg_101m](#))

Extra-EU hard coal imports by origin, 2009 EU-27 (1000 tonnes)



Source: Eurostat ([nrg_122m](#))

Comments

"p" = provisional

"s" = Eurostat estimate

"-" = zero or not applicable

Further information

Eurostat Website: <http://ec.europa.eu/eurostat>

Data on "Energy statistics"

<http://epp.eurostat.ec.europa.eu/portal/page/portal/energy/data/database>

Select "Energy statistics – quantities"

More information about "Energy statistics"

<http://epp.eurostat.ec.europa.eu/portal/page/portal/energy/introduction>

European Statistical Data Support:

Contact details for this support network can be found on our Internet site:

<http://ec.europa.eu/eurostat/>

Manuscript completed on: 30.04.2010

Data extracted on: 21.04.2010

ISSN 1977-0340

Catalogue number: KS-QA-10-019-EN-N

© European Union, 2010